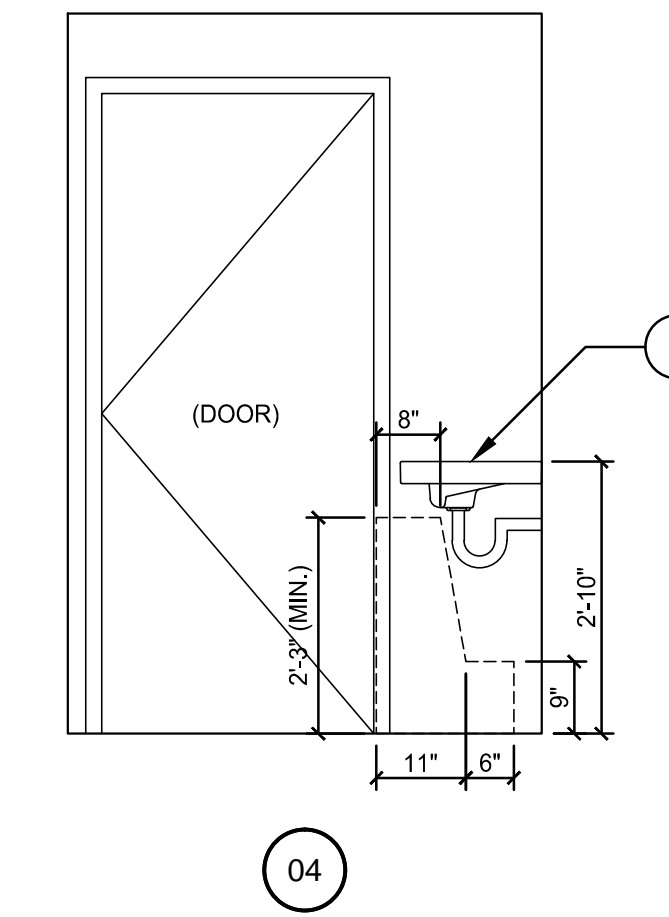
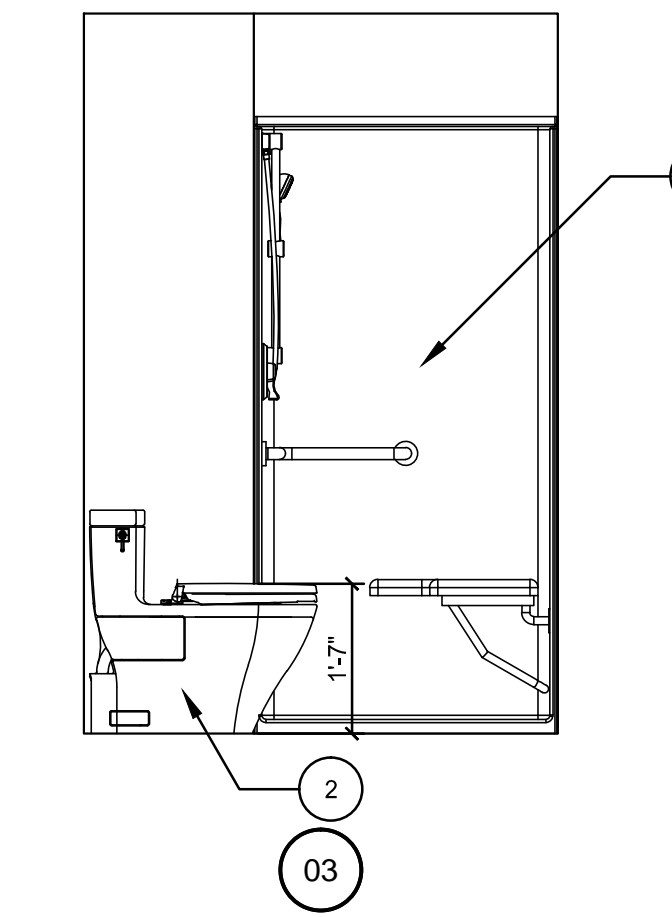
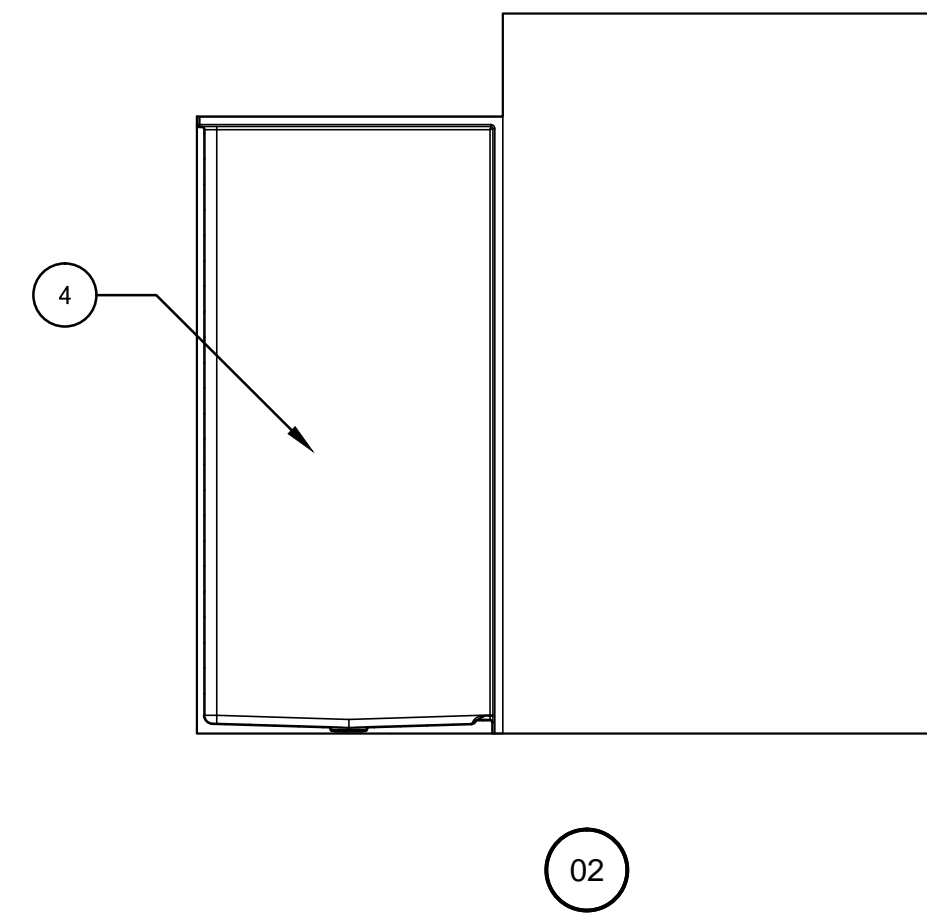
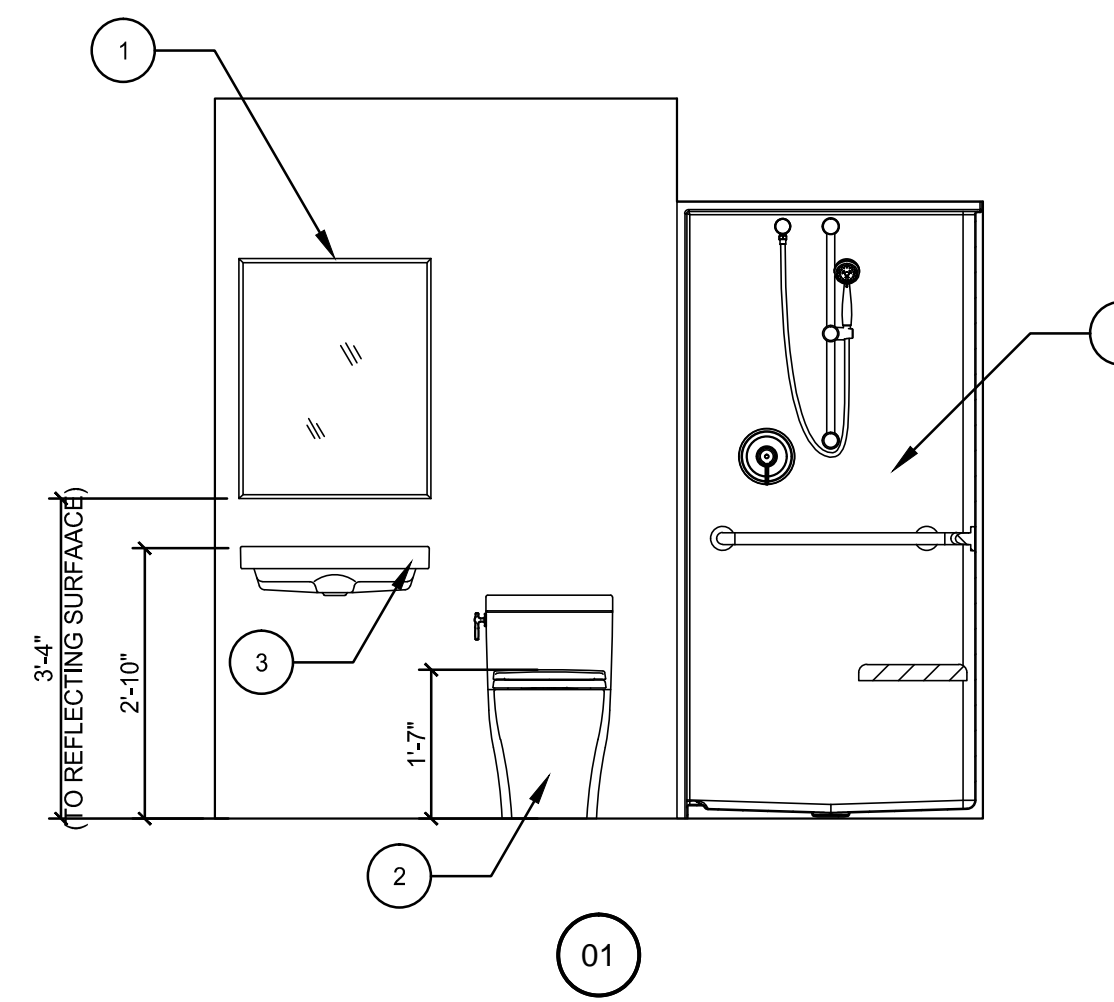


05 BATH PLAN
1/2"=1'-0"



1-4 INTERIOR ELEVATIONS
1/2"=1'-0"

1363BFS – ACCESSIBLE SHOWERS

Interior: 36 x 36 x 74 1/4 (915 x 915 x 1885)
Exterior: 38 x 38 1/4 x 77 1/4 (965 x 970 x 1960)
Fax on Demand #6003



FEATURES

- Gelcoat surface
- 1 3/4" (45mm) skirt
- 1/2" (15mm) interior threshold
- Barrier free when properly installed
- Smooth wall
- Center drain
- 5-year limited warranty

OPTIONS

- RH or LH fixture wall
- Grab bars
- Fold-up seat
- Hand-held shower assembly with slide bar
- Pressure balancing mixing valve
- Soap dish
- Curtain rod and/ or shower curtain

CODE COMPLIANCE

- ADA
- FHA
- ICC/ANSI A117.1
- ANSI Z124.1-2
- HUD LM73a
- CAN/CSA-B651.04
- CAN/CSA-B45-02

** Code compliant when fully equipped and installed according to guidelines.

AQUATIC ADVANTAGE

- National distribution
- 3 manufacturing facilities
- Private fleet
- Centralized customer service
- Field support
- 24-hour fax-on-demand

COLOR & TRIM OPTIONS

| Stock | Premium |
|-----------------|--------------|
| Almond | Black |
| Biscuit | Mexican Sand |
| Bone | Sandbar |
| Ultraclear | |
| Swelling Silver | |
| White | |

** Additional custom colors available. (Contact Customer Service)



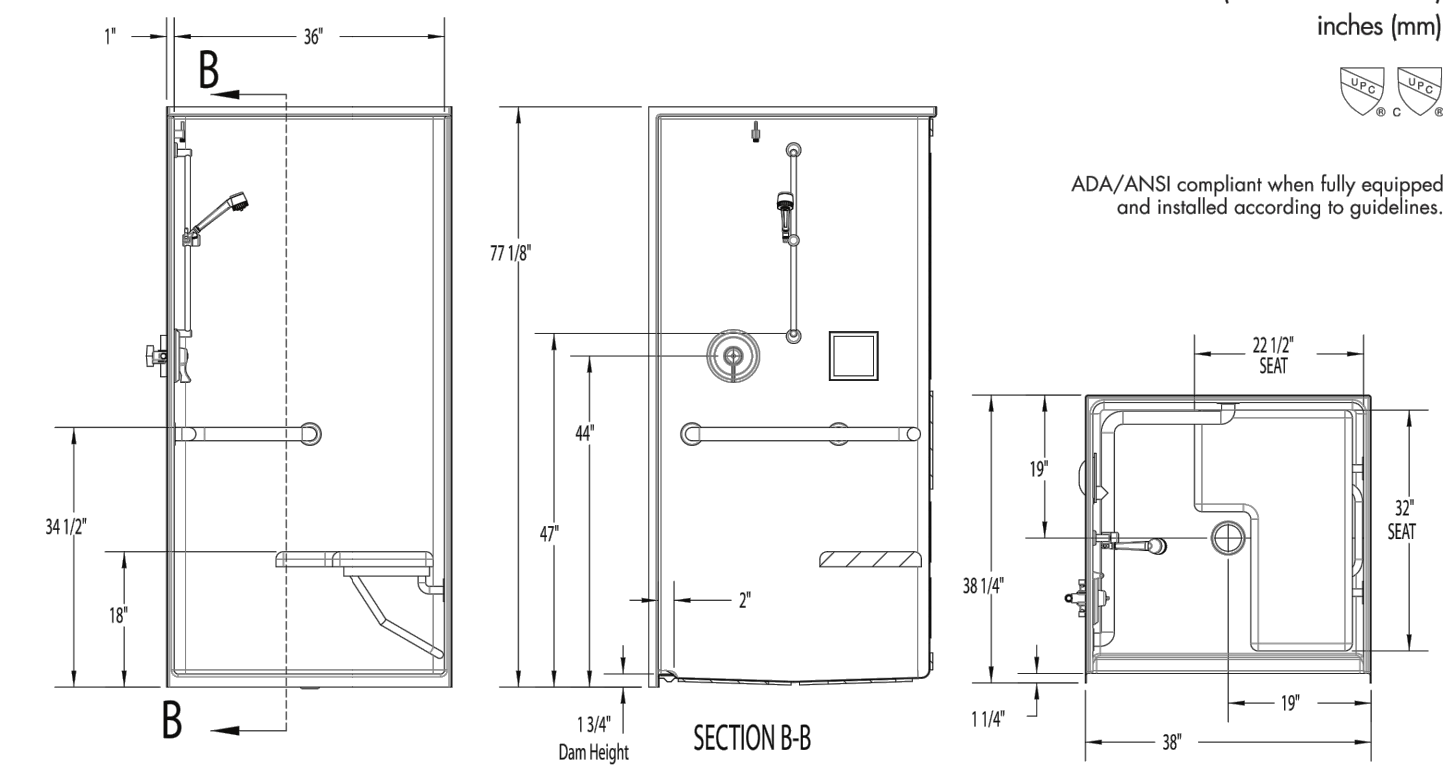
Aquatic products may be specified as Lasco Bathware.

TECHNICAL SPECIFICATIONS

Fax on Demand #6003

1363BFS

Interior: 36 x 36 x 74 1/4 (915 x 915 x 1885)
Exterior: 38 x 38 1/4 x 77 1/4 (965 x 970 x 1960)



| Type and Model # | Material | Wall Finish | Pieces | Drain | Drain/Skirt Height | Net Wt. | Fig. Wt. |
|------------------|----------|-------------|--------|--------|---|----------|----------|
| Shower #1363BFS | Gelcoat | Smooth | 1 | Center | 1 1/2" (45mm) skirt, 1/2" (15mm) interior threshold | 142 (65) | 152 (70) |

DIMENSIONS

| Specifications | inches (mm) |
|---------------------------------|-------------------------------|
| Width: Overall / Net | 38 (965) / 36 (915) |
| Depth: Overall / Net | 38 1/4 (970) / 36 (915) |
| Height: Overall / Net | 77 1/4 (1960) / 74 1/4 (1885) |
| Enclosure Opening: | 36 (915) |
| Skirt Height: | 1 1/4 (45) |
| Drain Rough-In (from Back Wall) | 19 (485) |
| Drain Rough-In (from Side Wall) | 19 (485) |

FRAMING DIMENSIONS

| Type | D (Depth) | W (Width) | H (Height) | A | B | C |
|--------|--------------|--------------|------------|---------|----------|----------|
| Alcove | 38 1/4 (970) | 38 1/4 (970) | - | Box Out | 19 (485) | 19 (485) |

For technical/installation literature, call (800) 877-2005 or visit www.aquaticbath.com Rev. 03.05.12

| TOILET ACCESSORIES SCHEDULE | | | | |
|-----------------------------|--|--------------|----------------|--|
| MARK | DESCRIPTION | MANUFACTURER | MODEL # | NOTES |
| 1 | 18"X36" MIRROR W/ STAINLESS STEEL CHANNEL FRAME | BOBRICK | B-165 SERIES | INSTALL AS SPECIFIED BY MANUFACTURER |
| 2 | ADA COMPLIANT TOILET | TOTO | AIMES | INSTALL AS SPECIFIED BY MANUFACTURER |
| 3 | ADA COMPLIANT LAVATORY | TOTO | MIYAMI RENESSE | INSTALL AS SPECIFIED BY MANUFACTURER |
| 4 | STANDARD TRANSFER TYPE SHOWER COMPARTMENT WITH SHOWER SEAT | AQUATIC | TBD | INSTALL AS SPECIFIED BY MANUFACTURER, SEE SPECIFICATIONS, THIS SHEET |

NOTE:
CONTRACTOR MAY SUBMIT EQUAL ALTERNATE FOR ARCHITECT / OWNER APPROVAL.



Aquatic products may be specified as Lasco Bathware.

24-HOUR FAX-ON-DEMAND 1-800-877-2005 aquaticbath.com

AMILCAR R. MELENDEZ
FLORIDA REGISTRATION AR93063



1001 SW 67 AVE, STE 102, Miami, FL 33144
TEL.: +1 305 894 6605 FAX.: +1 786 347 7692
INFO@ARM-ARCHITECT.COM
FLORIDA LICENSE NO. 6628001833

336 COLLINS

project name.

336 COLLINS AVENUE
MIAMI BEACH, FL 33139-6903
FOLIO: 02-4203-003-0870

project address.

PROPOSED
INTERIOR ELEVATIONS

| | | |
|----------------|----------|--------|
| drawing title. | PA/ARM | A-4.05 |
| drawn by. | 15006 | |
| project no. | 5.6.2015 | |
| date. | | |

© 2015 ARM ARCHITECT, P.A.