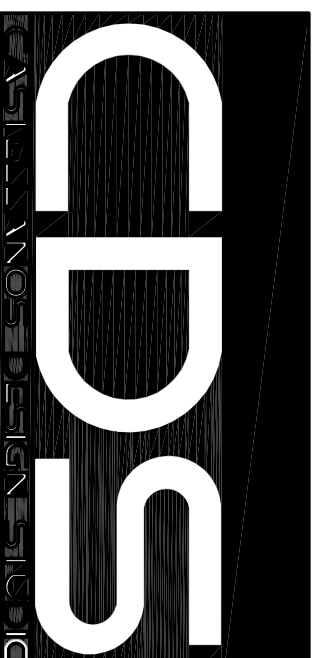


CLIENT:

701 4th Street  
Interior Renovations  
701 4th Street  
Miami Beach, FL 33139  
Folio: 02-4203-009-3040



333 SE 2ND AVENUE, SUITE 2066  
MIAMI, FL 33131  
Tel: 786.218.5335  
License #AA 260002467  
WWW.CASTELLANOSDESIGN.COM

Table with columns: No., DATE, ISSUED/REVISED

4\_06-13-17 RTC

Table with columns: Luminaire Schedule, Label, Description, Qty, Unit, Notes

Table with columns: Calculation Summary, Avg, Max, Min, Avg/Min, Max/Min

Project: 701 4th Street - EM WOOD - REV2 --- JUN - 9 - 2017

WESLEY ART CASTELLANOS  
FLORIDA ARCHITECT LICENSE #196133  
PROJECT NO: 2016-17

CHECKED BY: A.R. SHEETNO: 4  
DRAWN BY: A.R.  
SCALE: AS SHOWN  
© 2016 BY CDS

Table with columns: Luminaire Schedule, Label, Description, Qty, Unit, Notes

Table with columns: Calculation Summary, Avg, Max, Min, Avg/Min, Max/Min

Project: 701 4th Street - NORMAL - REV2 --- JUN - 9 - 2017

Table with columns: Luminaire Schedule, Label, Description, Qty, Unit, Notes

Project: 701 4th Street - EM WOOD - REV2 --- JUN - 9 - 2017

Table with columns: Calculation Summary, Avg, Max, Min, Avg/Min, Max/Min

Project: 701 4th Street - EM WOOD - REV2 --- JUN - 9 - 2017

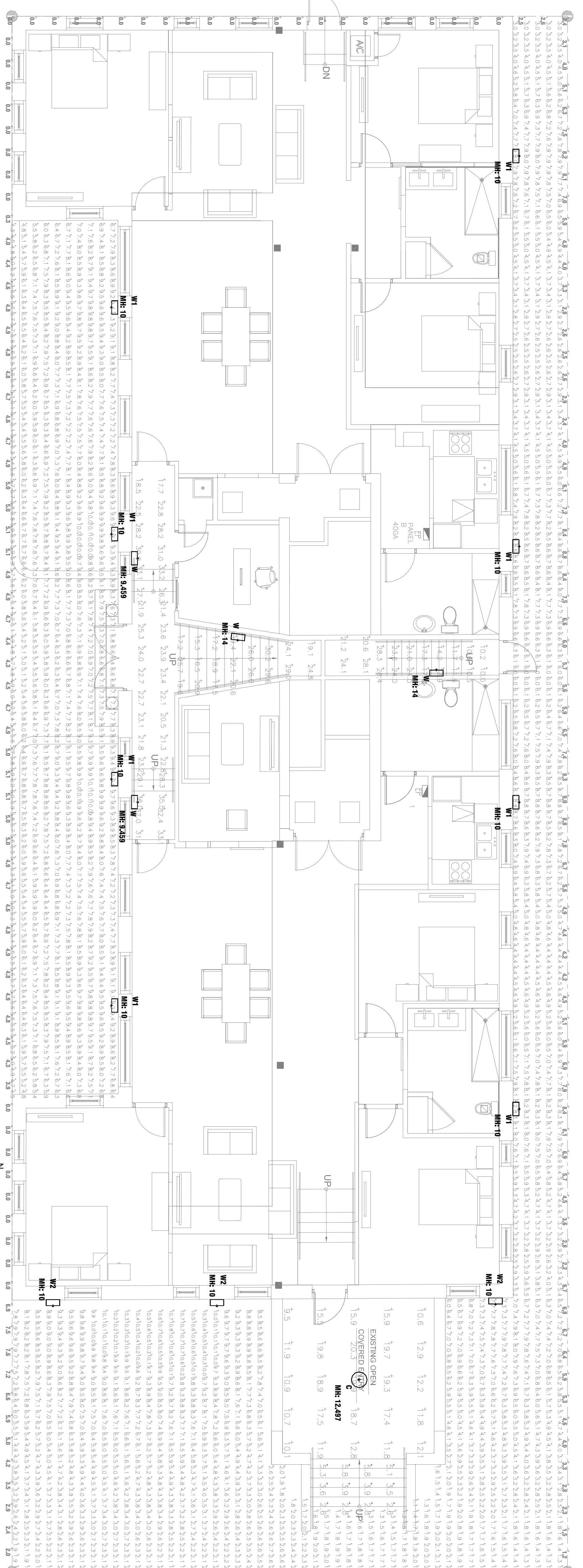
Table with columns: Calculation Summary, Avg, Max, Min, Avg/Min, Max/Min

NEW SHEET  
4

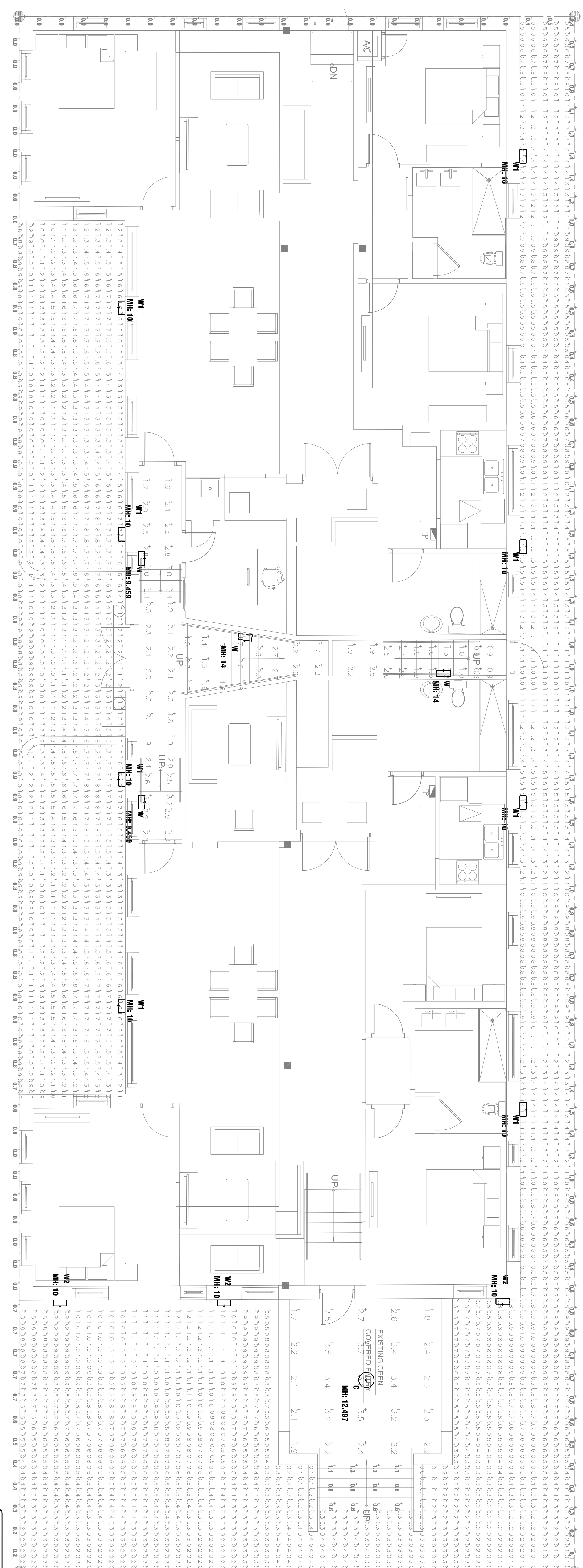
JOB # 16-0908

Amalita Rodriguez, P.E.  
License Number 60286  
C.A. 26300

engineering inc  
Gabriel International Plaza 1109  
Crestle at Sunrise Plaza, Suite 1109  
Phone > 305.444.8809  
Fax > 305.444.9827  
www.dspres.com



1 NORMAL LIGHTING PHOTOMETRIC  
E-2.1 SCALE:3/16"=1'-0"



2 EMERGENCY LIGHTING PHOTOMETRIC  
E-2.1 SCALE:3/16"=1'-0"

AMALITA RODRIGUEZ, VIRTUAL CONSULTANT ARCHITECT  
PROPERTY OF CASTELLANOS DESIGN STUDIO, LLC. ANY AND ALL BE  
HEREIN, INCLUDING BUT NOT LIMITED TO, THE ARCHITECT'S SEALS, EXPRESS  
THEIR RESPECTIVE PROFESSIONAL RESPONSIBILITIES AND THE ARCHITECT'S  
REQUIRED FOR THE FULL PERFORMANCE AND COMPLETION OF THE GENERAL  
CONTRACTOR SHALL BE THE ARCHITECT'S RESPONSIBILITY. THE ARCHITECT'S  
CLIENTS FROM THE PROCEEDING CONTRACTS OF INSURANCE, WITHOUT  
LIMITATION, SHALL BE THE ARCHITECT'S RESPONSIBILITY. THE ARCHITECT'S  
CONTRACTOR SHALL BE THE ARCHITECT'S RESPONSIBILITY. THE ARCHITECT'S  
BARBER, INCONSISTENT WITH THE ARCHITECT'S PROFESSIONAL  
RESPONSIBILITIES AND THE ARCHITECT'S PROFESSIONAL RESPONSIBILITIES.