

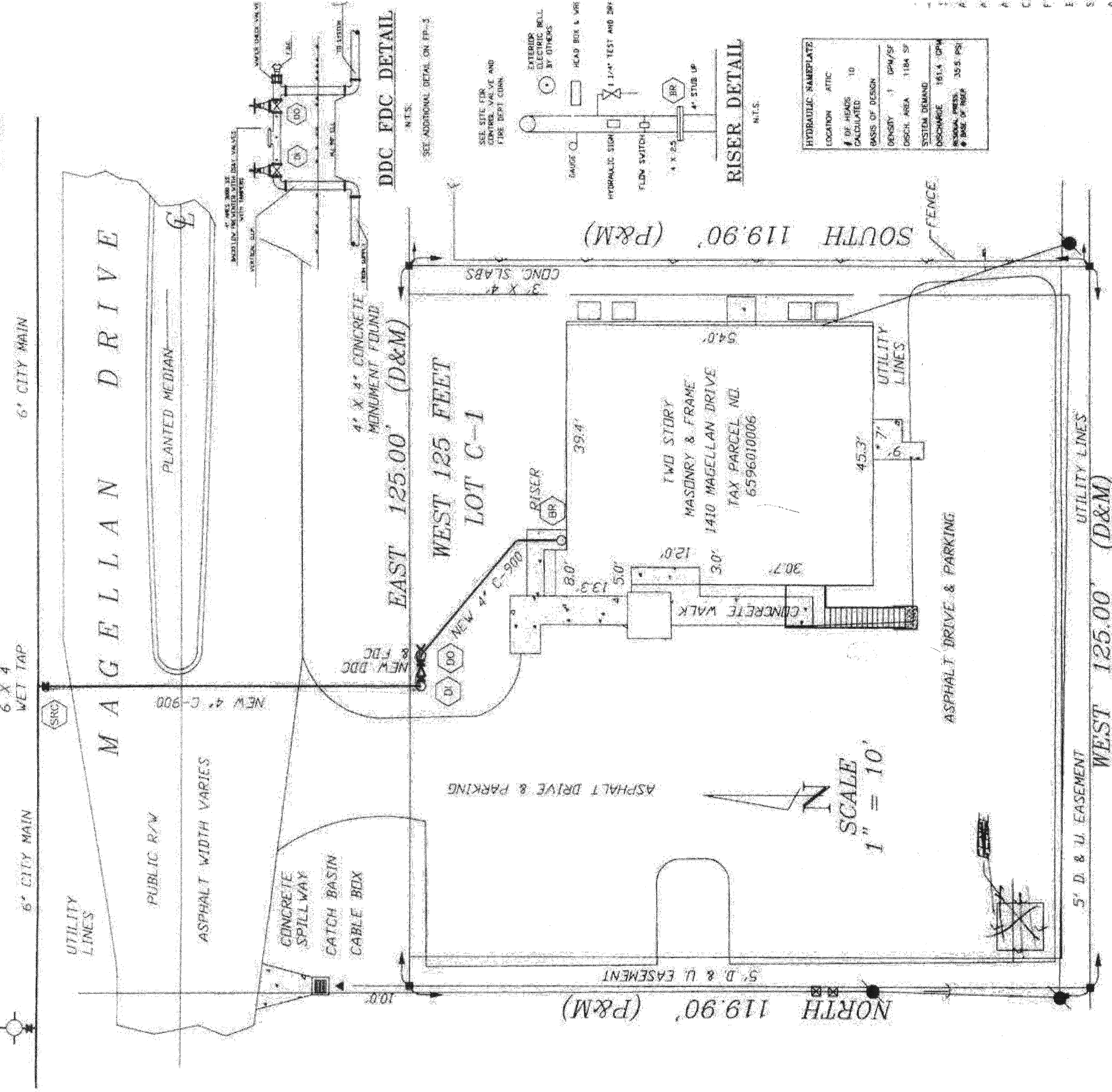
SPRINKLER TAP-IN

Hydant # 202V-062
 1236 Gpm
 Static 72
 Residual 42
 Flow 30

EXISTING FLOW HYDRANT

NOTE: WET TAP SHALL NOT BE LOCATED WITHIN 30" OF ANY JOINT OR FITTING

READ HYDRANT (EN 301)



SPRINKLER TAP-IN

HYDRANT NAMEPLATE

LOCATION	ATTC
# OF HEADS CALCULATED	10
BASES OF DESIGN	
DENSITY	1.0 GPM/SF
DISCH. AREA	1184 SF
SYSTEM DEMAND	161.4 GPM
DESIGN PRESS.	30.5 PSI
# FEET OF HOSE	

RISER DETAIL
N.T.S.

DDC FDC DETAIL
N.T.S.

SITE PLAN
SCALE: 1" = 10'-0"

SEE SHEET FP3 FOR FURTHER SITE DETAILS