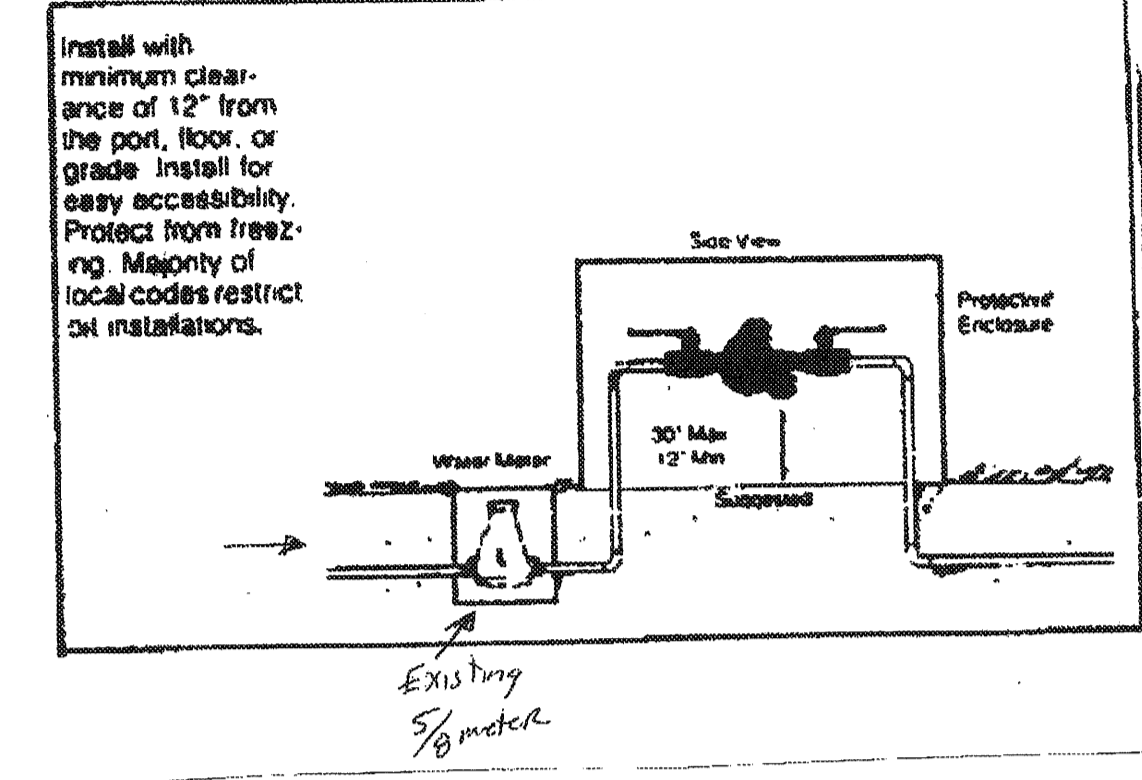
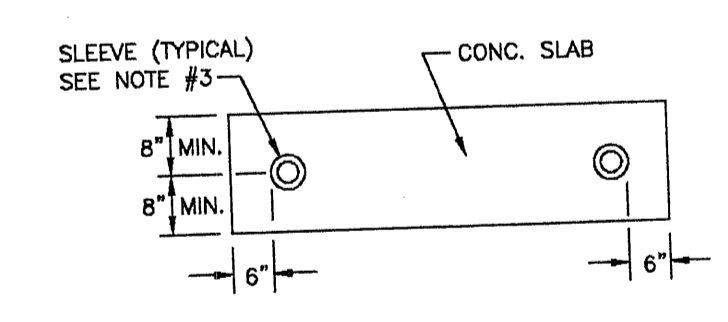
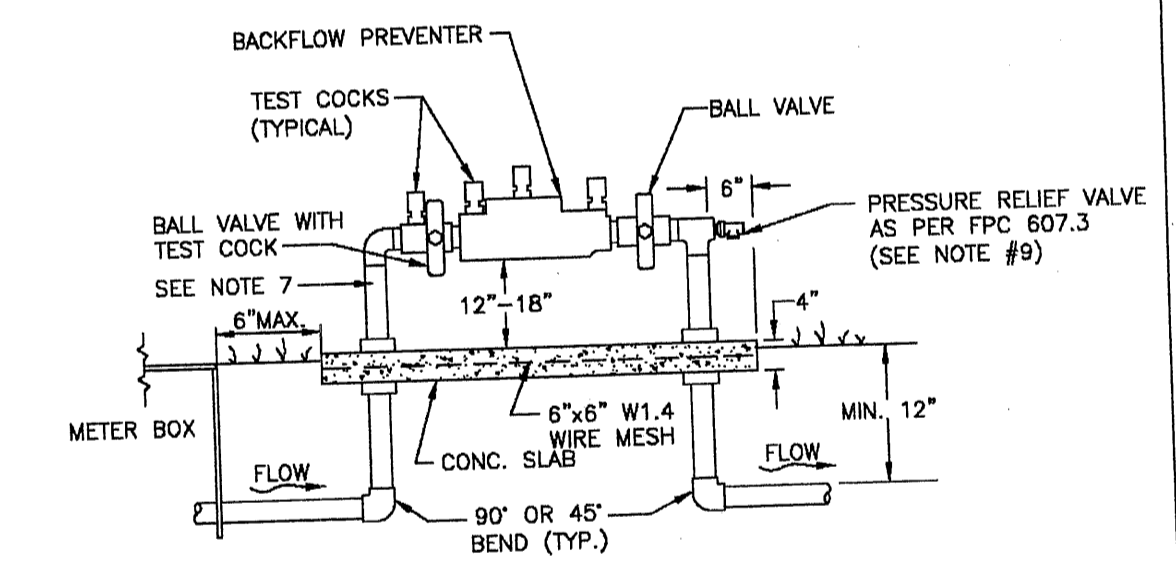


REDUCED PRESSURE BACKFLOW PREVENTER
3/4" through 2"



Existing 3/4"

NEW 6" PVC SEWER LINE



- NOTES:**
1. BACKFLOW DEVICE MUST BE INSTALLED IMMEDIATELY DOWNSTREAM OF METER, AS SHOWN ABOVE
 2. COPPER PIPE TYPE "K" OR BRASS PIPE MINIMUM SCHEDULE 40 SHALL BE USED TO A MINIMUM DEPTH OF 12" BELOW GRADE.
 3. PIPES PASSING THROUGH OR ENCASED IN CONCRETE MUST BE PROPERLY PROTECTED AND SLEEVED.
 4. THE SYSTEM MUST MEET ALL REQUIREMENTS OF THE FLORIDA PLUMBING CODE (LATEST EDITION) AND THE MANATEE COUNTY BACKFLOW PREVENTION ORDINANCE (LATEST EDITION).
 5. ALL EXPOSED EDGES OF CONCRETE SHALL BE CHAMFERED 1/2".
 6. BACKFLOW PREVENTER SHALL BE TESTED AT THE TIME OF INSTALLATION.
 7. PRESSURE REDUCING VALVE REQUIRED UPSTREAM OF BACKFLOW IF SYSTEM PRESSURE EXCEEDS 80 PSI.
 8. 3' MINIMUM CLEARANCE FROM LANDSCAPING PLANTS TO EDGE OF CONCRETE SLAB AND CLEAR OPENING FOR ACCESS FROM STREET.
 9. IN ADDITION TO THE PRV, THE BUILDING DEPT. MAY REQUIRE AN APPROVED DEVICE FOR THERMAL EXPANSION CONTROL.
 10. REFER TO DETAIL WATER METER & BACKFLOW PREVENTER FOR LIFT STATIONS FOR WATER SERVICE AT SEWAGE PUMPING STATION.

MANATEE COUNTY PUBLIC WORKS DEPARTMENT		3/4" & 1" BACKFLOW PREVENTER	UW-12 PAGE 130
REV. BY GLB/GR	DATE 11/10		
MAY 10, 2011 DATE OF APPROVAL			