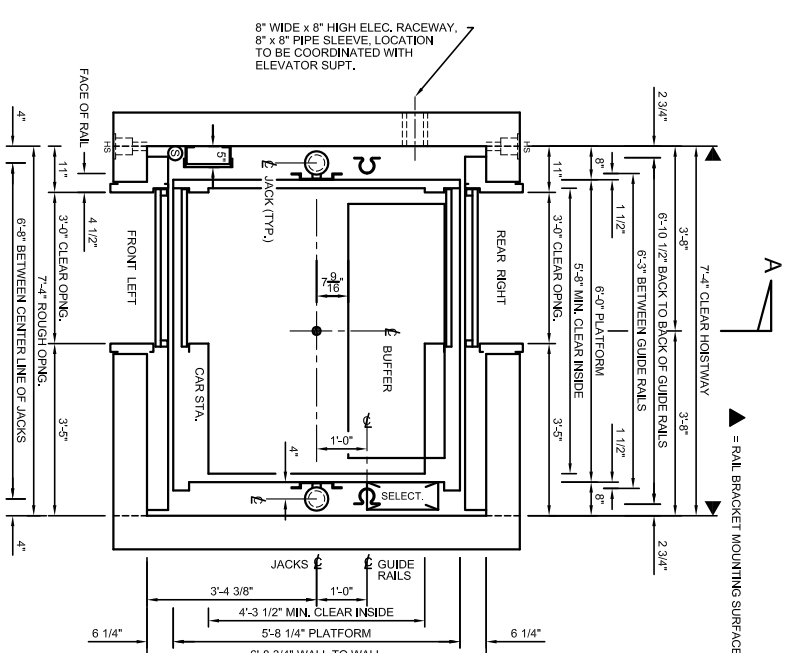


SECTION VIEW A-A
NOT TO SCALE

| POWER UNIT INFORMATION | | | |
|------------------------|--------------|-------------|--------|
| LENGTH | WIDTH | HEIGHT | WEIGHT |
| 5'-0 1/2" | 1'-10 15/16" | 2'-9 11/16" | 1875 |



HOISTWAY PLAN

NOTE A: OIL PIPE LINES AND FITTINGS SHALL BE PROPERLY SUPPORTED TO RELIEVE STRAIN.
NOTE B: RAIL REACTIONS INCLUDE ALLOWANCE FOR IMPACT.
NOTE C: THYSSENKRUPP ELEVATOR TO BE NOTIFIED OF ANY CHANGE TO ELEVATOR HOISTWAY OR MACHINE ROOM DESIGN.

LEAVE OFF ENTIRE WALL AT ALL ENTRANCES

HYDRAULIC ELEVATOR CONTRACT DATA

| | |
|--|----------------|
| TYPE: endura HMRL | CAPACITY: 2100 |
| SPEED: FPM UP MAX 150 FPM DOWN MAX | |
| OPERATION | |
| DOOR TYPE: ONE SPEED - LEFT HAND, RIGHT HAND | |
| PLATFORM THK: 3.38 | |
| BOTTOM CAR RUMBS: 6" | |
| BETWEEN PIT FLR & CAR BOLTER ON COMPRESSED BUFFER: 2'-4 1/8" | |

- THE FOLLOWING CONDITIONS MUST BE MET BEFORE INSTALLATION IS COMPLETED AND ARE NOT INCLUDED IN THE ELEVATOR CONTRACT:
- A PLUMB, PROPERLY VENTILATED HOISTWAY (ACCORDING TO CODE AND SIZES SHOWN).
 - ADEQUATE SUPPORT FOR JACK, GUIDE RAIL BRACKETS, AND BUFFERS (FOR REACTIONS SHOWN).
 - HOISTWAY BARRICADES AND ALL CUTTING AND PATCHING TO INSTALL HOISTWAY ENTRANCES, SILLS, HALL FITTURES, OIL AND ELECTRIC LINES.
 - PIT LIGHTS AND SWITCH, CONVENIENCE OUTLETS WITH GFCI PROTECTION PER NEC, PIT LADDER PER CAR (ACCORDING TO CODE). NOTE: MUST BE CLEAR OF ALL ELEVATOR EQUIPMENT.
 - DEDICATED 120 VOLT, 15 AMP, SERVICE ALONG WITH TELEPHONE CIRCUIT WHEN REQUIRED TO TERMINALS AND REQUIRED CONTROLER (AS SHOWN ON PLAN VIEW) FOR THE FOLLOWING:
 - GROUP CONTROL WHEN REQUIRED
 - GROUP CONTROL WHEN REQUIRED
 - NOTE: IF STANDBY POWER IS SUPPLIED TO ELEVATOR, CAR LIGHT AND ALARM CIRCUIT AND GROUP CONTROL SERVICE MUST BE STANDBY POWER BACKED.
 - BRANCH-CIRCUIT CONDUCTOR SPRING, MATERIALS, AND INSULATION INCLUDING BRANCH-CIRCUIT OVERCURRENT PROTECTIVE DEVICES TO COMPLY WITH ALL LOCAL ELECTRICAL CODES (SEE NOTE: ALSO, A FOURTH WIRE TO BE SIZED IN ACCORDANCE WITH THE NATIONAL ELECTRIC CODE IS REQUIRED FOR GROUNDING PURPOSES TO MINIMIZE ELECTRICAL NOISE INTERFERENCE. NOTE: IF STANDBY POWER IS REQUIRED, SEE ELEVATOR STANDBY POWER OPERATION).
 - GEN. CONTRACTOR MUST FORWARD POWER REQUIREMENTS TO ELEC. CONTRACTOR.
 - ENTRANCE WALL WITH LINTELS MUST BE PROVIDED AFTER FRAME AND RAILS ARE SET AND THE FRAME OPENINGS SEE INSTALLATION PROCEDURES FOR FRAME-TO-WALL INTERFACE DETAILS TO ENSURE CONFORMANCE WITH THE LABELED ENTRANCE INTERFACE CONSTRUCTION.
 - POCKETS IN CORRIDOR WALL (PER FIXTURE DRAWINGS) FOR HALL FIXTURES.
 - NOTE: MUST BE LOCATED AS DIRECTED BY ELEVATOR CONTRACTOR.
 - SMOKE SENSORS (AS REQUIRED).
 - CONDUIT AND WIRING FROM HOISTWAY TO ELEVATOR MONITORING PANELS FOR SECURITY, LIFE, SAFETY, OR FIRE REQUIREMENTS.

RAIL FORCES

| | | | |
|-------------|----------|----------|--|
| OMEGA RAILS | F1 | F2 | |
| | 289 LBS. | 217 LBS. | |

DESIGNED PER ASME A17.1 2010 CODE. DO NOT SCALE THIS DRAWING

FOR: _____ ELEV.# _____

ADDRESS: _____

DATE: _____

ARCHITECT: _____

GENERAL CONTRACTOR: THYSSENKRUPP ELEVATOR

ELEVATOR CONTRACTOR: THYSSENKRUPP ELEVATOR

This drawing and all information thereon is the proprietary property of ThyssenKrupp Elevator and must not be made public or copied. This drawing is loaned subject to return on demand and is not to be used directly or indirectly in any manner detrimental to the interest of ThyssenKrupp Elevator.

