



BUILDING CODE COMPLIANCE OFFICE (BCCO)
PRODUCT CONTROL DIVISION

MIAMI-DADE COUNTY, FLORIDA
METRO-DADE FLAGLER BUILDING
140 WEST FLAGLER STREET, SUITE 1603
MIAMI, FLORIDA 33130-1563
(305) 375-2901 FAX (305) 375-2908
www.miamidade.gov/buildingcode

NOTICE OF ACCEPTANCE (NOA)

Ingersoll-Rand
6810 Hillsdale Court
Indianapolis, IN 46250

SCOPE:

This NOA is being issued under the applicable rules and regulations governing the use of construction materials. The documentation submitted has been reviewed by Miami-Dade County Product Control Division and accepted by the Board of Rules and Appeals (BORA) to be used in Miami Dade County and other areas where allowed by the Authority Having Jurisdiction (AHJ).

This NOA shall not be valid after the expiration date stated below. The Miami-Dade County Product Control Division (In Miami Dade County) and/or the AHJ (in areas other than Miami Dade County) reserve the right to have this product or material tested for quality assurance purposes. If this product or material fails to perform in the accepted manner, the manufacturer will incur the expense of such testing and the AHJ may immediately revoke, modify, or suspend the use of such product or material within their jurisdiction. BORA reserves the right to revoke this acceptance, if it is determined by Miami-Dade County Product Control Division that this product or material fails to meet the requirements of the applicable building code.

This product is approved as described herein, and has been designed to comply with the Florida Building Code, including the High Velocity Hurricane Zone.

DESCRIPTION: IR Series Single glazed Outswing Commercial Steel Doors w / wo Panic Exit Devices

APPROVAL DOCUMENT: Drawing No "IRGS07", titled "IR Glass Outswing Doors", sheets 1 through 13 of 13, prepared by the manufacturer, dated 05-27-07 and last revised on 04/14/10, signed and sealed by Thomas Gordon, P.E., bearing the Miami-Dade County Product Control Renewal stamp with the Notice of Acceptance number and expiration date by the Miami-Dade County Product Control Division.

MISSILE IMPACT RATING: Large Missile Impact Resistant

Limitations:

- 1. See Design Pressures, Sizes, DLO, Hardware and Water infiltration limitation sheet 1 & 2 of the drawings.
- 2. Expanded foam core options (F) in sheet 4 is limited to EPS by Falcon Corp and Polyisocyanurate -H200 (polyurethane) by Elliott Co.
- 3. Electrical/Electronic function is not part of this approval, such functions to be reviewed and approved by AHJ.

RENEWAL of this NOA shall be considered after a renewal application has been filed and there has been no change in the applicable building code negatively affecting the performance of this product.

TERMINATION of this NOA will occur after the expiration date or if there has been a revision or change in the materials, use, and/or manufacture of the product or process. Misuse of this NOA as an endorsement of any product, for sales, advertising or any other purposes shall automatically terminate this NOA. Failure to comply with any section of this NOA shall be cause for termination and removal of NOA.

ADVERTISEMENT: The NOA number preceded by the words Miami-Dade County, Florida, and followed by the expiration date may be displayed in advertising literature. If any portion of the NOA is displayed, then it shall be done in its entirety.

INSPECTION: A copy of this entire NOA shall be provided to the user by the manufacturer or its distributors and shall be available for inspection at the job site at the request of the Building Official.

This NOA **revises & renews** NOA # **07-0829.06** consists of this page 1 and evidence pages E1, E-2, as well as approval document mentioned above.

The submitted documentation was reviewed by **Ishaq I. Chanda, P.E.**



NOA No 10-0209.09
Expiration Date: May 05, 2015
Approval Date: May 12, 2010
Page 1

4/22/10

NOTICE OF ACCEPTANCE: EVIDENCE SUBMITTED

A. DRAWINGS (transferred from file # **07-0829.06**)

1. Manufacturer's parts and sections drawings.
2. Drawing No "IRGS07", titled "IR Glass Outswing Doors", sheets 1 through 13 of 13, prepared by the manufacturer, dated 05-27-07 and last revised on 04/14/10, signed and sealed by Thomas Gordon, P.E.

B. TESTS

1. Test report on

- 1) Uniform Static Air Pressure Test, Loading per TAS 202-94
- 2) Large Missile Impact Test per FBC, TAS 201-94
- 3) Cyclic Wind Pressure Loading per FBC, TAS 203-94
- 4) Forced Entry Test, per PA 202-94

Along with manufacturer's parts and section drawings of double flush outswing steel doors, marked by National Certified Testing Lab, Test Reports No. **NCTL-210- 3580-2**, dated March 25, 2009, signed and sealed by Gerry Ferrara, P. E.

2. Test report on (transferred from file # **07-0829.06**)

- 1) Air Infiltration Test, per TAS 202-94
- 2) Uniform Static Air Pressure Test, Loading per TAS 202-94
- 3) Large Missile Impact Test per FBC, TAS 201-94
- 4) Cyclic Wind Pressure Loading per FBC, TAS 203-94
- 5) Forced Entry Test, per PA 202-94

Along with manufacturer's parts and section drawings of double glazed outswing steel doors, marked by Certified Testing Lab, Test Reports No(s). **CTLA-776W** dated February 20, 2002, **CTLA-975W** dated Jan 23, 2003, **CTLA-882W** dated Aug 29, 2002, **CTLA-1035W** dated May 28, 2003 and , **CTLA-1086-W** dated Nov. 17, 2003 and **CTLA-1107W-3** dated June 30, 2004, all signed and sealed by Ramesh Patel, P.E.

Note: Test report CTLA-1035W has been revised by an addendum letter dated Feb 20, 2009, signed and sealed by Ramesh Patel, P.E.

Also the manufacturer's parts and section drawings of glazed outswing double steel doors, marked by Certified Testing Lab, Test Reports No(s). **NCTL-210-3232-1** dated 02/24/06 and **NCTL-210-3357-1** dated Dec 28, 2006, signed and sealed by Gerard J. Ferrara, P.E.

3. Additional test reports

- 1) Uniform Static Air Pressure Test, Loading per FBC TAS 202-94.
- 2) Water Resistance Test per FBC TAS 202-94

Along with marked-up drawings and installation diagram of double steel commercial doors, prepared by National Certified Testing Laboratories Inc., Test Report No. **NCTL-210-03-0514-11**, dated August 31, 2004 , **NCTL 210- 03-3511-1** dated 04/09/08 and **NCTL 210- 03-3549-1** dated 08/26/08, all signed and sealed by Gerry Ferrara, P. E.

4. Reference test report No. CTLA-1107W for strap anchor qualification.

C. CALCULATIONS: (transferred from file # **07-0829.06**)

1. Statement of compliance & anchor verification evaluation report dated 12/18/2007 and last revised on 06/18/2008, prepared, signed & sealed by Thomas Gordon., P.E.
2. Evaluation report for Hinges dated 09/01/04, prepared, signed & sealed by Thomas Gordon., P.E.

Ishaq I. Chanda

Ishaq I Chanda, P.E.
Product Control Examiner
NOA No 10-0209.09
Expiration Date: May 05, 2015
Approval Date: May 12, 2010

NOTICE OF ACCEPTANCE: EVIDENCE SUBMITTED

D. QUALITY ASSURANCE BY:

1. Miami-Dade County Building Code Compliance Office (BCCO).

E. MATERIAL CERTIFICATIONS (transferred from file # 07-0829.06)

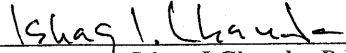
1. Test Report No. **03NK2370/R145081**, January 21, 2003, issued by Underwriters laboratories Inc for "Surface Burning Characteristics of Building material" per ASTM E84-00a and self Ignition per ASTM 1929D for "Elfoam H200", issued to Elliott Co. of Indianapolis Inc.
2. Notice of Acceptance No. **08-0305.02** issued to Sabic innovative Plastic (Former G.E. Plastic) for "Lexan sheet", expiring on 07/17/2013.
3. 2. Notice of Acceptance No. **07-1116.04** issued to E.I. DuPont DeNemours, for "SentryGlasPlus", expiring on 01/14/2012.
4. Tensile Test report No. A103W1-Test 1, 2 & 3 dated 23 APR 03 per ASTM E-8 for steel face sheet, prepared by Certified Testing laboratory, signed and sealed by Ramesh Patel, P.E.
5. Test Report No. **NER-384**, reissued dated May 01, 1994, issued by National Evaluation Service Inc to Huntsman Chemical Corporation for "Expanded Polystyrene EPS" for grade 86 & grade 54 for "Surface Burning Characteristics of Building material" per ASTM E 84.
6. Test Report No. **9691**, dated August 28, 1987, 1994, issued by United Testing Company Inc. to Huntsman Chemical Corporation for "Expanded Polystyrene EPS" for grade 86 & 54 for "Self Ignition Temperature Test" per ASTM D-1929.
7. Test Report No. **R16529**, July 29, 2005, issued by Underwriters laboratories Inc for foamed plastic for "Surface Burning Characteristics of Building material" per ASTM E84 and self Ignition per ASTM 1929D for "BRYX-R16529", issued to Falcon Foam, Division of Atlas Roofing Corp.

F. STATEMENTS

1. Letter of conformance & "No financial interest" dated Feb 03, 2010, signed and sealed by Gordon Thomas, P.E.
2. Letter of conformance & "No financial interest" dated June 08, 2008, signed and sealed by Gordon Thomas, P.E. (transferred from file # **07-0829.06**)
3. Laboratory Statement of compliance, part of the above referenced test reports.
4. Letter of certification dated 04/20/10, issued by Ingersoll-Rand for electronic CO lock series mechanical /functional parts same as AD, ND and AD-M series.
5. Letter of commitment dated 04/21/10 issued by Ingersoll-Rand for additional tests for butt & continuous Hinges in near future, signed by Yuri Farber.

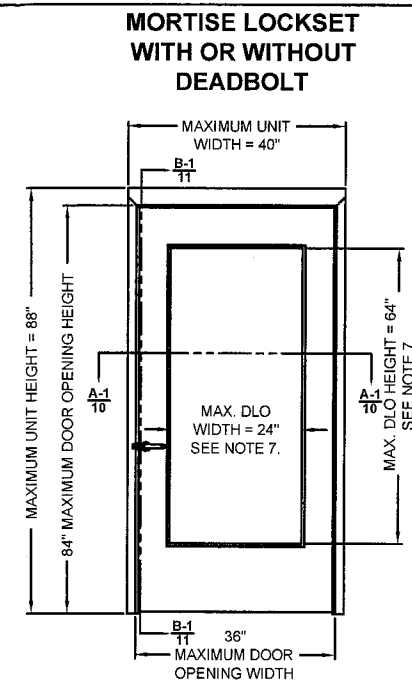
G. OTHER

1. This NOA **revises & renews** NOA # **07-0829.06**, expiring May 05, 2015.
2. Previously consolidates NOA #(s) associated with this files are **07-0829.06, 04-0303.03, 05- 0103.01, 05-0325.02, 08-0508.07** and **08-0715.03**
3. Consolidation Test proposal # **06-2468**, dated 04/27/07 approved by BCCO.
4. IR Locks & Panic devices brochures / catalogs supplied by manufacturer.

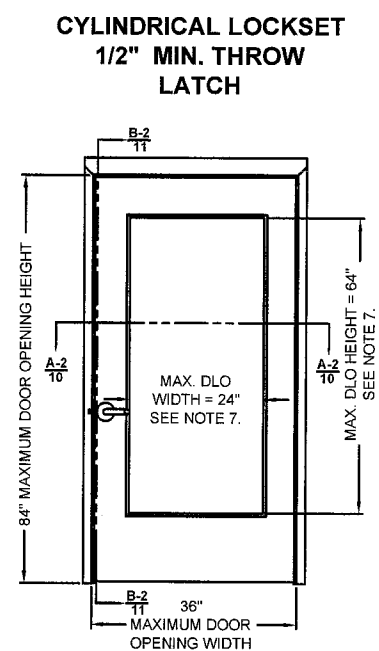

Ishaq I Chanda, P.E.
Product Control Examiner
NOA No 10-0209.09
Expiration Date: May 05, 2015
Approval Date: May 12, 2010

REVISIONS				
LTR	DESCRIPTION	DATE	APPROVED	
A	APPROVAL DWG	YMF	05/20/07	
B	REVISED DWG	RAP	11/26/07	
C	REVISED DWG	RAP	12/12/07	
D	REVISED DWG	YMF	07/29/08	
E	REVISED PER_MDBCCD	YMF	01/30/09	
F	REVISED PER_MDBCCD	YMF	02/04/09	
G	REVISED DWG	YMF	01/04/10	
H	REVISED DWG	YMF	04/09/10	

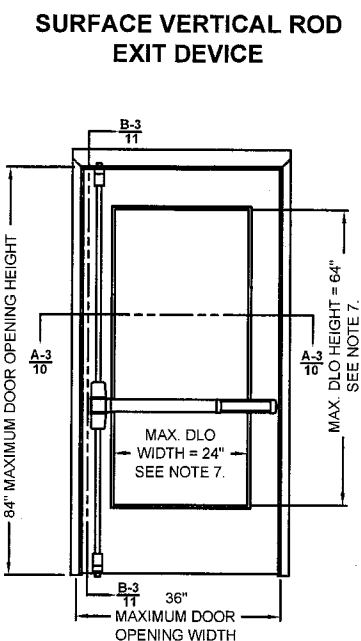
Gordon Thomas 4/14/10
 Gordon Thomas, P.E. Date
 3759 Blossom Court
 Mason, OH 45040
 Florida # 46718



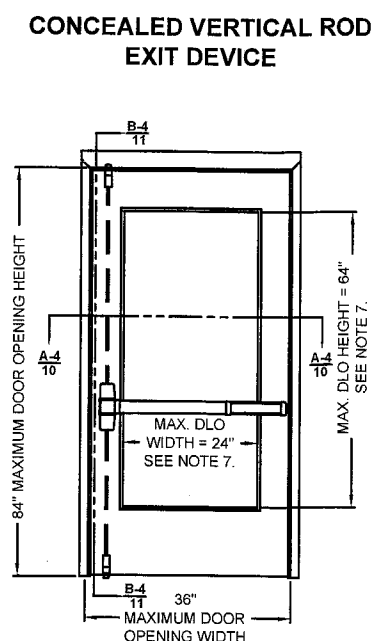
DESIGN PRESSURE RATING, PSF	
WHERE WATER INFILTRATION REQUIREMENT IS NEEDED	WHERE WATER INFILTRATION REQUIREMENT IS NOT NEEDED
±75	±75



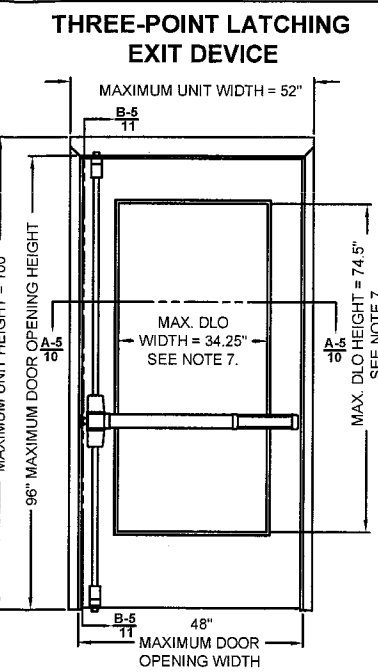
DESIGN PRESSURE RATING, PSF	
WHERE WATER INFILTRATION REQUIREMENT IS NEEDED	WHERE WATER INFILTRATION REQUIREMENT IS NOT NEEDED
±75	±75



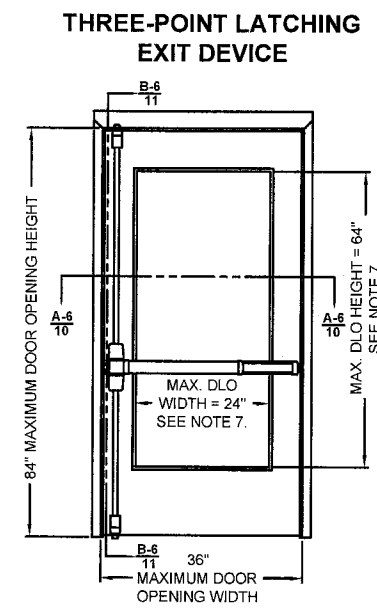
DESIGN PRESSURE RATING, PSF	
WHERE WATER INFILTRATION REQUIREMENT IS NEEDED	WHERE WATER INFILTRATION REQUIREMENT IS NOT NEEDED
±60	±60



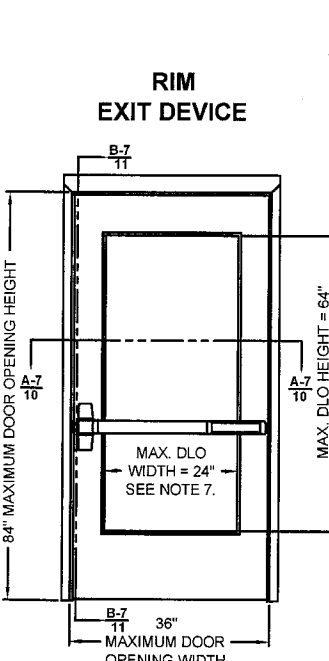
DESIGN PRESSURE RATING, PSF	
WHERE WATER INFILTRATION REQUIREMENT IS NEEDED	WHERE WATER INFILTRATION REQUIREMENT IS NOT NEEDED
±60	±60



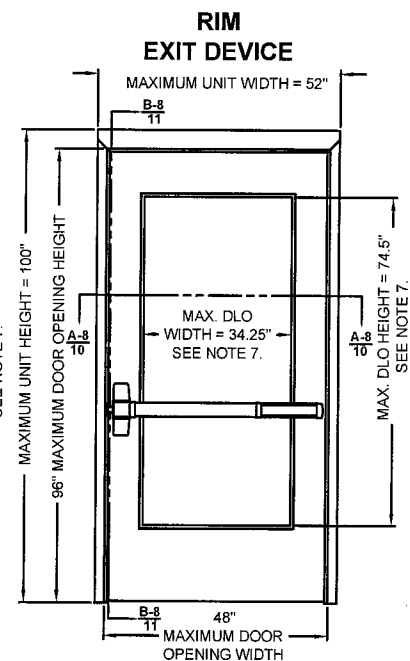
DESIGN PRESSURE RATING, PSF	
WHERE WATER INFILTRATION REQUIREMENT IS NEEDED	WHERE WATER INFILTRATION REQUIREMENT IS NOT NEEDED
±50	±50



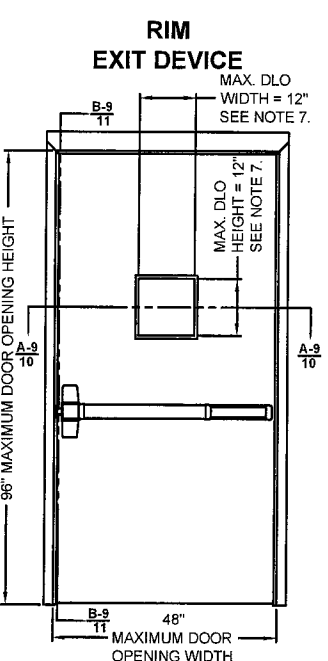
DESIGN PRESSURE RATING, PSF	
WHERE WATER INFILTRATION REQUIREMENT IS NEEDED	WHERE WATER INFILTRATION REQUIREMENT IS NOT NEEDED
±60	±60



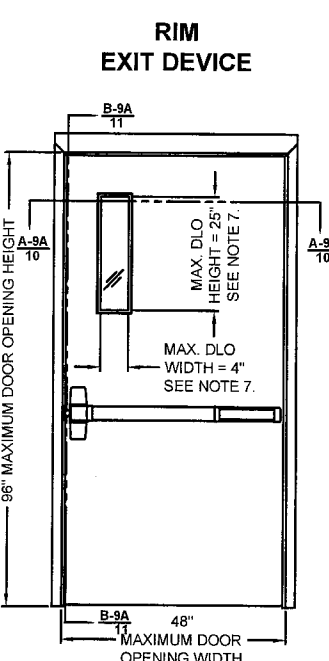
DESIGN PRESSURE RATING, PSF	
WHERE WATER INFILTRATION REQUIREMENT IS NEEDED	WHERE WATER INFILTRATION REQUIREMENT IS NOT NEEDED
±60	±60



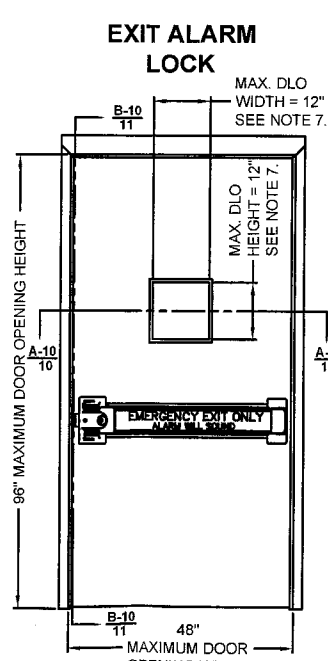
DESIGN PRESSURE RATING, PSF	
WHERE WATER INFILTRATION REQUIREMENT IS NEEDED	WHERE WATER INFILTRATION REQUIREMENT IS NOT NEEDED
±50	±50



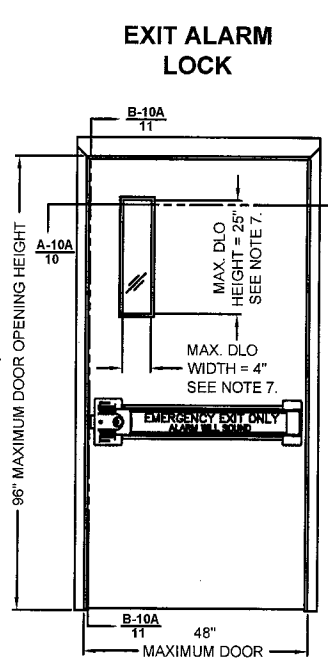
DESIGN PRESSURE RATING, PSF	
WHERE WATER INFILTRATION REQUIREMENT IS NEEDED	WHERE WATER INFILTRATION REQUIREMENT IS NOT NEEDED
±75	±100



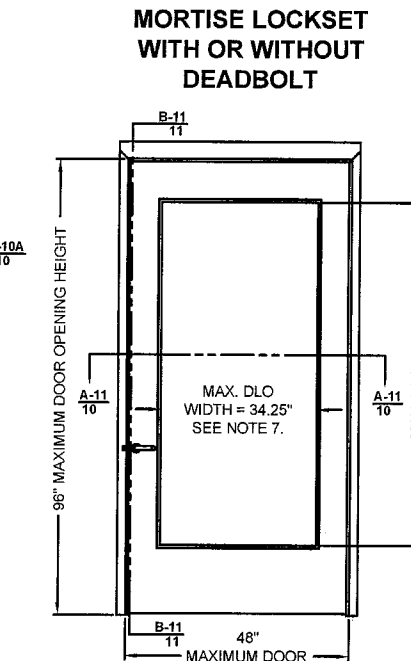
DESIGN PRESSURE RATING, PSF	
WHERE WATER INFILTRATION REQUIREMENT IS NEEDED	WHERE WATER INFILTRATION REQUIREMENT IS NOT NEEDED
±75	±100



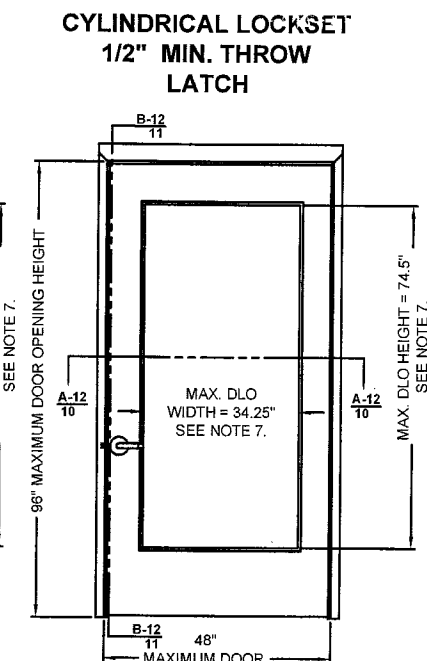
DESIGN PRESSURE RATING, PSF	
WHERE WATER INFILTRATION REQUIREMENT IS NEEDED	WHERE WATER INFILTRATION REQUIREMENT IS NOT NEEDED
±55	±55



DESIGN PRESSURE RATING, PSF	
WHERE WATER INFILTRATION REQUIREMENT IS NEEDED	WHERE WATER INFILTRATION REQUIREMENT IS NOT NEEDED
±55	±55



DESIGN PRESSURE RATING, PSF	
WHERE WATER INFILTRATION REQUIREMENT IS NEEDED	WHERE WATER INFILTRATION REQUIREMENT IS NOT NEEDED
±50	±50



DESIGN PRESSURE RATING, PSF	
WHERE WATER INFILTRATION REQUIREMENT IS NEEDED	WHERE WATER INFILTRATION REQUIREMENT IS NOT NEEDED
±50	±50

- NOTES:
- INTERIOR VIEWS ARE SHOWN FOR ALL ELEVATIONS
 - SEE TABLE 1 ON SHEET 2 FOR HARDWARE APPLICATIONS AND LIMITATIONS
 - SEE SHEET 3 FOR HINGE REQUIREMENTS
 - SEE SHEET 4 FOR ANCHORING TYPES AND LIMITATIONS
 - SEE SHEET 5 FOR WEATHERSTRIPPING INSTALLATION DETAILS AND LIMITATIONS
 - SEE SHEET 8 FOR GLAZING OPTIONS AND DETAILS
 - DLO - DAYLIGHT OPENING SIZE, SAME AS EXPOSED GLASS

PRODUCT RENEWED
 as complying with the Florida
 Building Code
 Acceptance No. 10-0209-09
 Expiration Date MAY 5 2015
 By *Ishag J. Chande*
 Miami Dade Product Control
 Division

BEND RADIUS

THIRD ANGLE PROJECTION

DRAWN: YMF DATE: 05/20/07

CHECKED:

APPROVED:

ENG. APPVL: JPD DATE: 11/15/07

INGERSOLL RAND
 Security Technologies

TITLE MIAMI-DADE PRODUCT APPROVAL

GLASS OUTSWING DOORS AND HARDWARE CONFIGURATIONS
 IR COMMERCIAL DOOR OPENING SINGLE GLASS DOORS.

SIZE: FLAT DWG NO.: IRGS07 REV: H

SCALE: NTS AUTOCAD SHEET: 1 of 13

Door Configuration	Maximum Design Pressure, PSF		Maximum Door Opening Size, in.		Maximum DLO Size, in. (NOTE 3)		Locking Hardware Description				Comments
	Positive	Negative	Width	Height	Width	Height	Hardware Family	Model/Series	Strike Models	IR Brand	
1	75	75	36	84	24	64	Mortise Lock	L/LV9400/AD MS	10-072	Schlage	Function with deadbolt, 3/4" min. throw latch & 1" min. throw bolt
								L/LV9000/AD MS			Function w/o deadbolt, 3/4" min. throw latch
								M	ANSI	Falcon	Function with or w/o deadbolt, 3/4" min. throw latch & 1" min. throw bolt (if applicable)
								5500	ANSI	Schlage/Locknetics	Function with autobolt
2	75	75	36	84	24	64	Cylindrical Lock	D/ND/AD CYL	10-025	Schlage	1/2" min throw latch
								T	ANSI	Falcon	1/2" min throw latch
								5100	ANSI	Schlage/Locknetics	1/2" min throw latch
3	60	60	36	84	24	64	Surface Vertical Rod Exit Device	98/9927(F)	299-F,499-F Top, 304L,248L4 Bottom	Von Duprin	
								(F)18-V	3788 Top, 2130 Bottom	Monarch	
								(F)25-V	3788 Top, 2130 Bottom	Falcon	
4	60	60	36	84	24	64	Concealed Vertical Rod Exit Device	98/9947-F	338 Top, 385A Bottom	Von Duprin	
								33/3547A -F	338 Top, 385A Bottom	Von Duprin	
								F-25-C	4188 Top, 2130 Bottom	Falcon	
								F-18-C	4188 Top, 2130 Bottom	Monarch	
5	50	50	48	96	34.25	74.5	Three-Point Latching Device	98/9957(F)	299-F,499-F Top/Middle, 304L,248L4 Bottom	Von Duprin	
6	60	60	36	84	24	64	Three-Point Latching Device	98/9957(F)	299-F,499-F Top/Middle, 304L,248L4 Bottom	Von Duprin	
7	60	60	36	84	24	64	Rim Exit Device	98/99(F)	299-F,499-F	Von Duprin	
								88-F	268	Von Duprin	
								(F)DL-18-R	F570	Monarch	
8	50	50	48	96	34.25	74.5	Rim Exit Device	98/99(F)	299-F,499-F	Von Duprin	
								88-F	268	Von Duprin	
								(F)DL-18-R	F570	Monarch	
9	75/100 SEE NOTE 2.	75/100 SEE NOTE 2.	48	96	12	12	Rim Exit Device	XP98/99(F)	909/954	Von Duprin	
9A											
10	55	55	48	96	12	12	Exit Alarm Lock	2670 Guard-X	267	Von Duprin	
10A											
11	50	50	48	96	34.25	74.5	Mortise Lock	L/LV9400/AD MS	10-072	Schlage	Function with deadbolt, 3/4" min. throw latch & 1" min. throw bolt
								L/LV9000/AD MS			Function w/o deadbolt, 3/4" min. throw latch
								M	ANSI	Falcon	Function with or w/o deadbolt, 3/4" min. throw latch & 1" min. throw bolt (if applicable)
								5500	ANSI	Schlage/Locknetics	Function with autobolt, min 3/4" throw
12	50	50	48	96	34.25	74.5	Cylindrical Lock	D/ND/AD CYL	10-025	Schlage	1/2" min throw latch
								T	ANSI	Falcon	1/2" min throw latch
								5100	ANSI	Schlage/Locknetics	1/2" min throw latch

REVISIONS			
LTR	DESCRIPTION	DATE	APPROVED
A	APPROVAL DWG	YMF 05/20/07	
B	REVISED DWG	RAP 11/26/07	
C	REVISED DWG	RAP 12/12/07	
D	REVISED DWG	YMF 07/29/08	
E	REVISED PER_MDBCCD	YMF 01/30/09	
F	REVISED PER_MDBCCD	YMF 02/04/09	
G	REVISED PER_MFR	YMF 05/18/09	
H	REVISED PER_MFR	YMF 04/09/10	


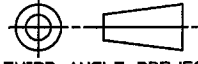
[Signature] 4/14/10
 Gordon Thomas, P.E. Date
 3759 Blossom Court
 Mason, OH 45040
 Florida # 46718

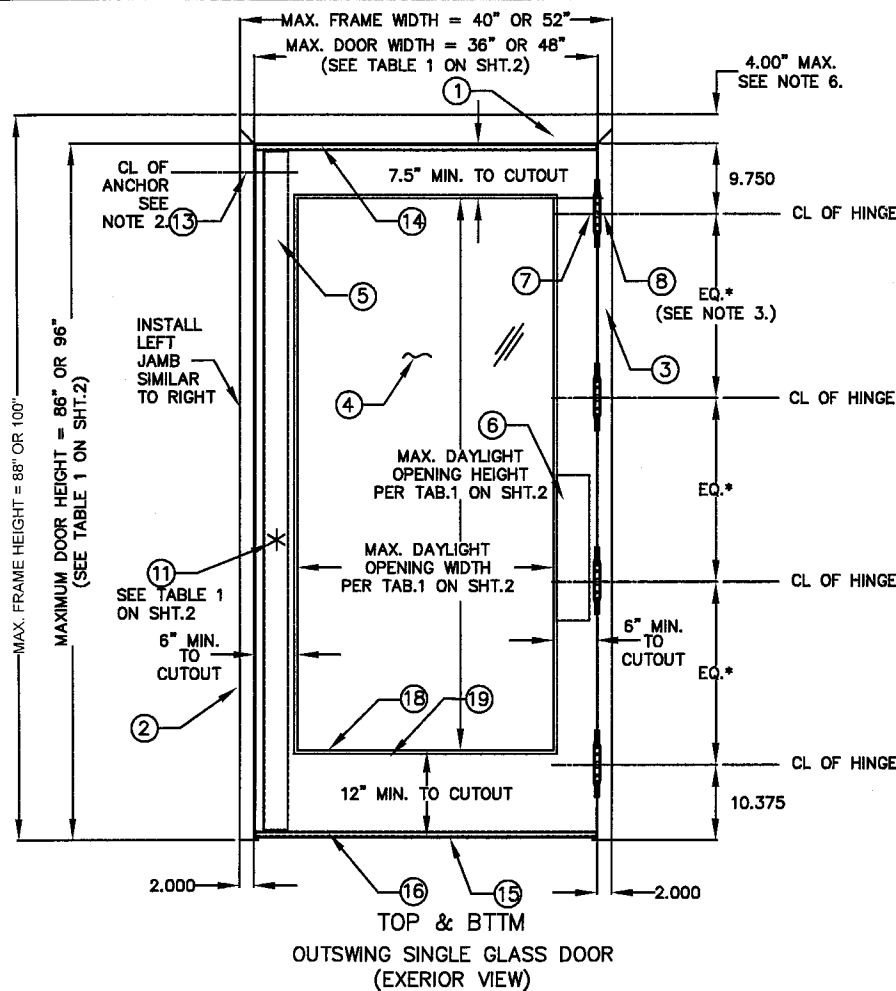
PRODUCT REVIEWED
 as complying with the Florida
 Building Code
 Approval No. 10-0209.09
 Expiration Date **MAY 5 2015**
 By *[Signature]*
 Miami Dade Product Control
 Division

TABLE 1.

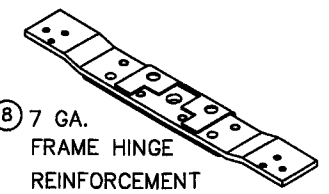
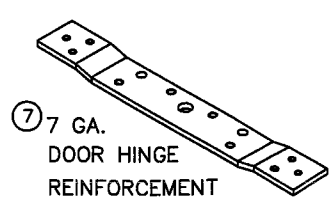
NOTES:

- SEE SHEETS 9, 10 &, 11 FOR LOCKING HARDWARE.
- DOOR CONFIGURATIONS 9 AND 9A ARE RATED FOR MAXIMUM DESIGN PRESSURE UP TO +75 PSF WHEN WATER INFILTRATION REQUIREMENT IS NEEDED, AND ±100 PSF WHEN WATER INFILTRATION REQUIREMENT IS NOT NEEDED.
- DLO - DAYLIGHT OPENING, SAME AS EXPOSED GLASS.

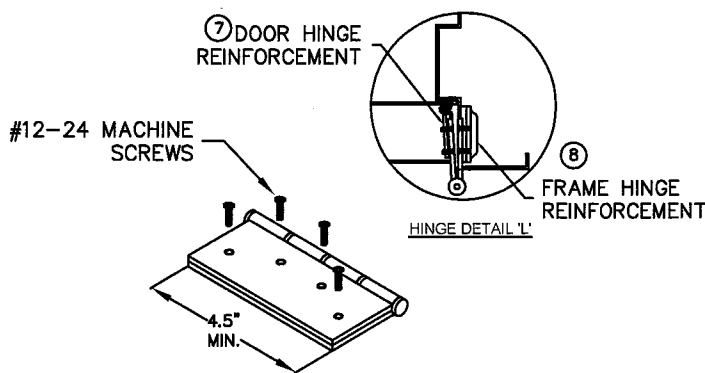
BEND RADIUS		 Ingersoll Rand Security Technologies	
 THIRD ANGLE PROJECTION			
DRAWN	DATE	TITLE MIAMI-DADE PRODUCT APPROVAL	
YMF	05/20/07	GLASS OUTSWING DOORS AND HARDWARE CONFIGURATIONS IR COMMERCIAL DOOR OPENING SINGLE GLASS DOORS.	
CHECKED		SIZE	FLAT
APPROVED		DWG NO.	IRGS07
ENG. APPVL	DATE	SCALE	SHEET
JPD	11/15/07	NTS	AUTOCAD
			2 of 13



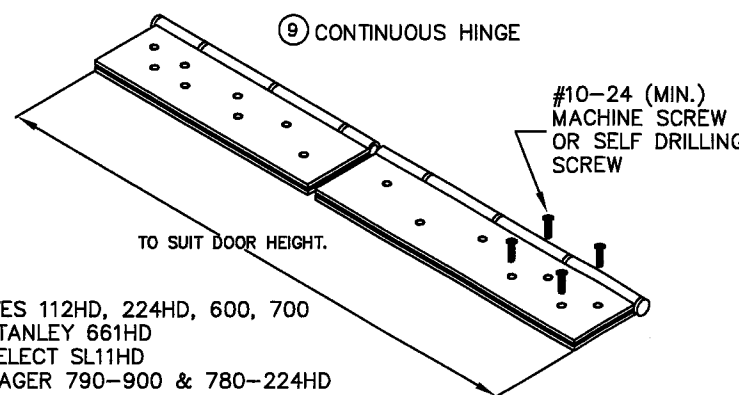
[Signature]
 Gordon Thomas, P.E.
 3759 Blossom Court
 Mason, OH 45040
 Florida # 46718



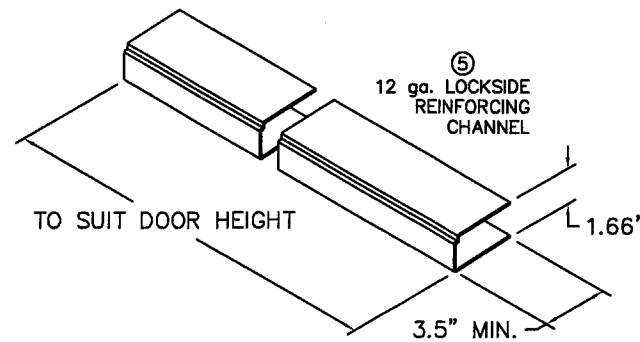
DLO - DAY LIGHT OPENING



9 BUTT HINGE
 MIN SIZE 4.5" X 4.5" STD. WT. (.134" MIN.)
 IVES 5BB1/3CB1
 HAGER 1279
 STANLEY F179/1900



IVES 112HD, 224HD, 600, 700
 STANLEY 661HD
 SELECT SL11HD
 HAGER 790-900 & 780-224HD
 MARKAR FM-300 & HG305
 ABH A500 & A240HD



PRODUCT RENEWED
 as complying with the Florida
 Building Code
 Acceptance No 10-0209-09
 Expiration Date MAY 5, 2015
 By Ishag J. Idris
 Miami Dade Product Control
 Division

REVISIONS				
LTR	DESCRIPTION	DATE	APPROVED	
A	APPROVAL DWG.	YMF	05/20/07	
B	REVISED DWG.	RAP	11/26/07	
C	REVISED DWG.	RAP	12/12/07	
D	REVISED DWG.	YMF	07/29/08	
E	REVISED PER_MDBCCO	YMF	01/30/09	
F	REVISED PER_MDBCCO	YMF	02/04/09	
G	REVISED DWG	YMF	01/04/10	
H	REVISED DWG	YMF	04/09/10	

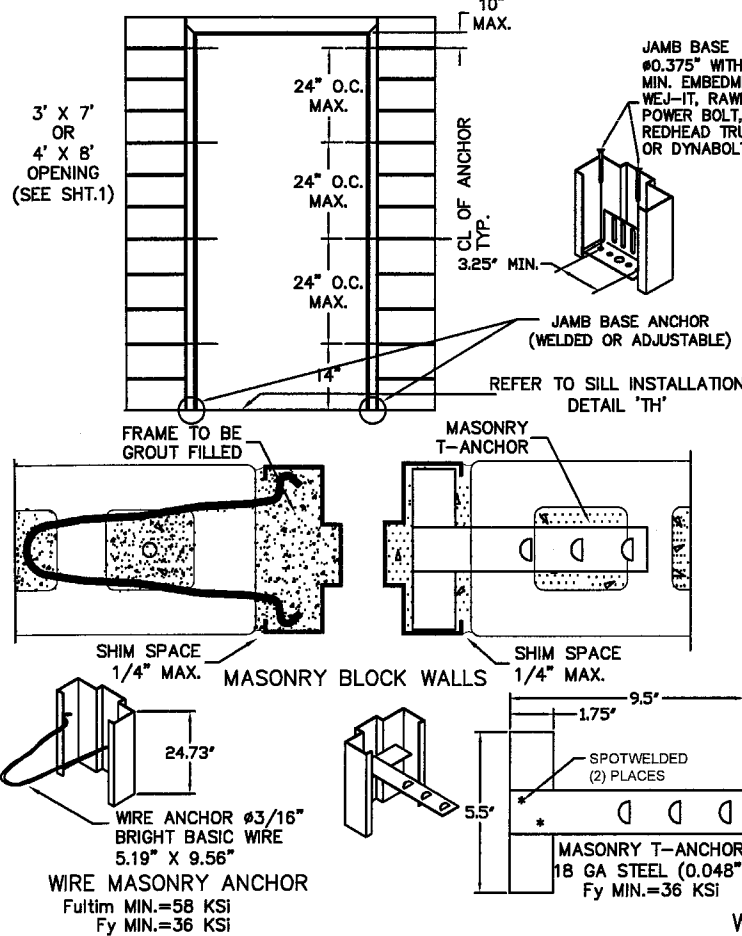
ITEM	QUANTITY	DESCRIPTION	MATERIAL	SIZE, MAX.
1	1	HEAD SEE SHT 6 ASTM A366	.053" MIN. STL	MAX. 52"
2	1	STRIKE JAMB SEE SHT. 6 ASTM A366	.053" MIN. STL	MAX. 100"
3	1	HINGE JAMB SEE SHT 6 ASTM A366	.053" MIN. STL	MAX. 100"
4	1	LEXAN 9034 BY GE.	.25" MIN.	35.406" X 75.656" MAX (SEE ELEV)
5	1	LAMINATED GLASS WITH SENTRYGLAS PLUS (DuPont)	.562" MIN.	
6	1	SUPERLITE II-XL BY SAFTI WITH SENTRYGLAS PLUS (DuPont)	1.0" MIN.	
7	NOTE 3.	LOCK SIDE REINFORCEMENT CHANNEL	.093" MIN. STL	3.5 X 93.44 MAX.(SEE ELEV)
8	NOTE 3.	HINGE SIDE PANIC REINFORCEMENT	.067" MIN. STL	MAX. 20"
9	NOTE 3.	HINGE REINFORCEMENT DOOR ASTM A621	.167" MIN. STL	1.28" X 9.19"
10	NOTE 3.	HINGE REINFORCEMENT FRAME ASTM A621	.167" MIN. STL	1.3" X 9.187" MAX.
11	NOTE 3.	4.5" X 4.5" BUTT HINGES (SEE THIS SHT)	.134 MIN.	(B) #12-24 MS PER HINGE
12	NOTE 3.	OPTIONAL CONTINUOUS HINGE (SEE THIS SHT)	.067" MIN. STL/.12 ALUM	MAX. 95"
13	1	CORE MATERIAL (SHEET 4):	A) HONEYCOMB B) STEEL STIFFENED C & F) POLYSTYRENE D) POLYURETHANE/POLYSOCYANURATE E) MINERAL BOARD TEMPERATURE RISE CORE	
14	1	LOCKING HARDWARE - SEE SHEET 2 TABLE 1.		
15	1	THRESHOLD SILL W/BUMPER GASKET		
16	1	1) ZERO 566A	SEE TAB. 3&4, SHT.5	.100" ALUM. 6063 T5
17	1	2) NAT'L GUARD 950A		5.50"X0.5"X48"MAX.
18	NOTE 2.	JAMB ANCHOR ASTM A924	SEE SHEET 4	
19	3	PS074 WEATHER STRIPPING	TPE	MAX. 24'
20	1	FAS-SEAL DOOR SWEEP	TPE	MAX. 48"
21	2	END CHANNEL ASTM A924 (14 GA - INVERTED)		.69" X 1.66" X 48" MAX.
22	AS NEEDED	BUTYL RUBBER OR 100% SILICONE		
23	1	GLAZING HOLDING TRIM		
24	1	#1) DEZIGNER TRIM	.032" MIN. STL	34.25" X 74.5" EXPOSED GLASS MAX.
25	1	#2) STEEL OVERLAPPING TRIM UP TO 3/4" GLASS		
26	1	#3) STEEL OVERLAPPING TRIM FOR 5/8" GLASS & THICKER		
27	1	#4) HIGH SECURITY VISION FRAME SG-10 BY ANEMOSTAT	.093" MIN. STL	
28	1	VLF-S10 BY AIR LOUVERS	.123" MIN. STL	
29	NOTE 10.	CUTOUT REINFORCEMENT CHANNEL (18 GA)	.047" MIN. STL	0.5" X 1.56" X 75.5" MAX.
30	1	DOOR SLAB (16 OR 14 GA)	SEE SHEET 4	4' X 8' MAX.
31	1	BY ZERO INT'L DOOR SEAL No.8144FS		
32	1	BY STEELCRAFT DOOR SEAL PS074	TPE	MAX. 24'
33	2	BY ZERO INT'L DOOR SWEEP No.539		
34	2	BY NGP DOOR SWEEP No.202N	TPE	MAX. 86" OR 96"
35	1	BY ZERO INT'L DOOR SWEEP No.139		
36	1	BY NGP OMIT	SEE SHEET 5	MAX. 36" OR 48"
37	1	BY ZERO INT'L ADJUSTABLE STOP No.475		
38	1	BY NGP ADJUSTABLE STOP No.170N	TPE	MAX. 36" OR 48"
39	1	BY ZERO INT'L RAIN DRIP No.11		
40	1	BY NGP DRIP CAP No.16A	SEE SHEET 5	MAX. 36" OR 48"
41	1	TOP CAP GALV. A60 ASTM A924	.020" MIN. STL	0.5" X 1.76" X 36" OR 48"

NOTES:

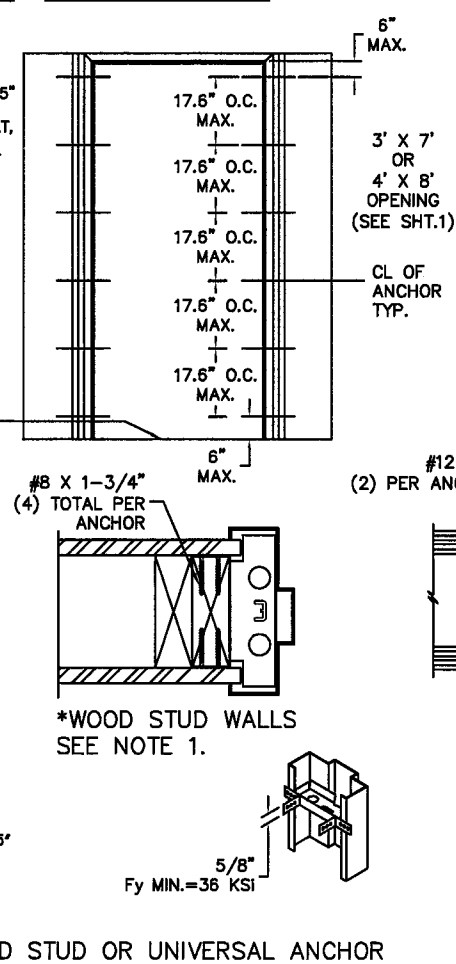
- ONE ROW OF PS074 WEATHERSTRIPPING PER JAMB AND HEAD. INSTALL PER SHT.5
- ANCHOR REQUIREMENTS:
SEE SHEET 4 FOR APPROVED ANCHORS AND INSTALLATION.
- HINGE REQUIREMENTS: 4.5" STD WT. MIN.
FOR DOOR OPENING UP TO 90" HIGH - MIN (3) HINGES
FOR DOOR OPENING OVER 90" - 96" HIGH - MIN (4) HINGES
STD LOCATIONS: 9.75" FROM RABBIT IN HEAD TO CL OF TOP HINGE
10.38" FROM FLOOR TO CL OF BOTTOM HINGE, EQUALLY SPACED
IN BETWEEN. HINGE LOCATIONS MAY VARY, MAX SPACING DO NOT EXCEED 35.5"
APPROVED CONTINUOUS HINGE MODELS: IVES 112 HD, 224HD, 600, 700, MARKAR FM-300, HG-305, STANLEY 661HD, HAGER 780-224HD, 790-900, SELECT SL11HD, ABH A500, A240HD.
- SEE SHEET 2 & 3 FOR AVAILABLE STANDARD OPENING SIZES AND SPECIFICATIONS.
- HARDWARE INSTALLATION AS PER MANUFACTURER'S INSTRUCTIONS.
- 4" FACE IS AVAILABLE FOR FRAMES.
- APPLY CAULK AS NEEDED.
- WEATHERSTRIPPING, SEE SHEET #5.
- SEE SHEET 12 FOR HORIZONTAL CROSS-SECTIONS, SEE SHEET 13 FOR VERTICAL CROSS-SECTIONS.
- INSTALL REINFORCEMENT CHANNELS AROUND EACH LITE-CUTOUT.
- ELECTRICAL INSTALLATION IS UNDER SEPARATE APPROVAL AND MUST BE REVIEWED BY CORRESPONDING AUTHORITY.
- OPTIONAL POWER TRANSFERS, AND/OR "SIGNAL SWITCH" MAY BE USED AS ALLOWED BY CODE AND IT DOES NOT AFFECT THE MECHANICAL PROPERTIES OF EXIT DEVICE AND/OR INHIBIT EGRESS.
- ITEMS 21 THROUGH 25 REQUIRED ONLY IF WATER INFILTRATION IS NEEDED.
- SILL SHALL BE ANCHORED PER TOP DOOR VIEW ON THIS SHEET.
- DAYLIGHT OPENING (DLO) IS THE SAME AS EXPOSED GLASS.

BEND RADIUS		 Ingersoll Rand Security Technologies	
THIRD ANGLE PROJECTION			
DRAWN	DATE	TITLE MIAMI-DADE PRODUCT APPROVAL	
YMF	05/20/07	H-SERIES SINGLE GLASS DOORS (OUTSWING) IR HARDWARE.	
CHECKED		SIZE	FLAT
APPROVED		DWG NO.	IRGS07
ENG. APPVL	11/15/07	SCALE:	NTS AUTOCAD
JPD		SHEET	3 of 13

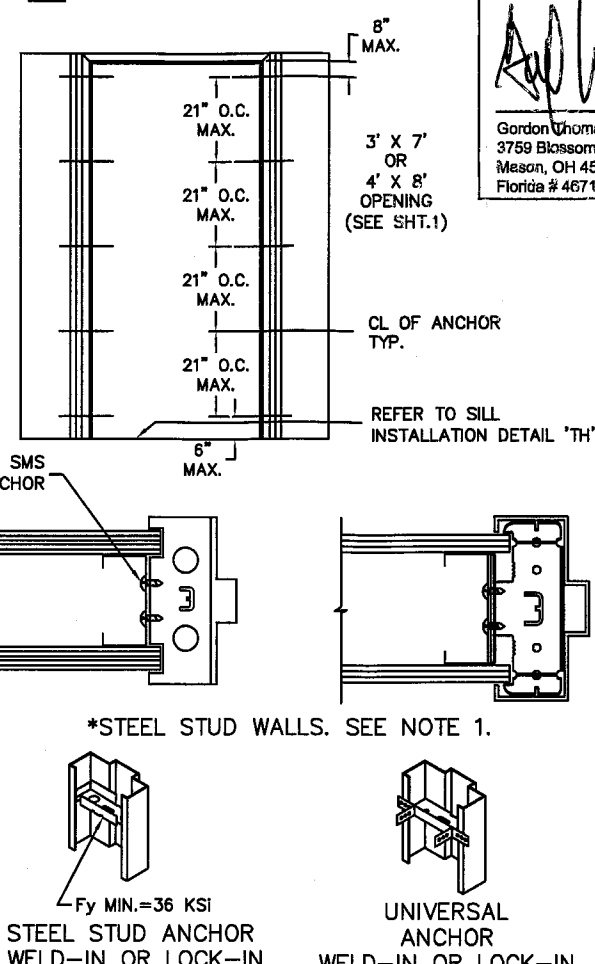
A WIRE MASONRY ANCHOR INTO GROUT FILLED FRAME AND BLOCK WALL



B WOOD STUD ANCHOR



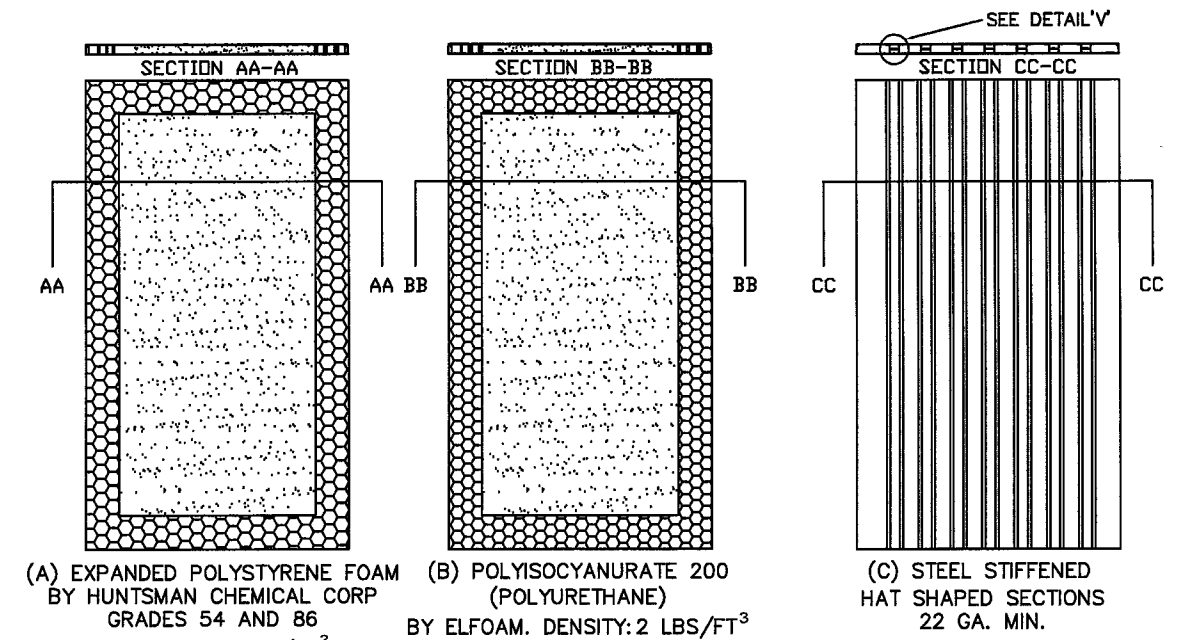
C STEEL STUD ANCHOR



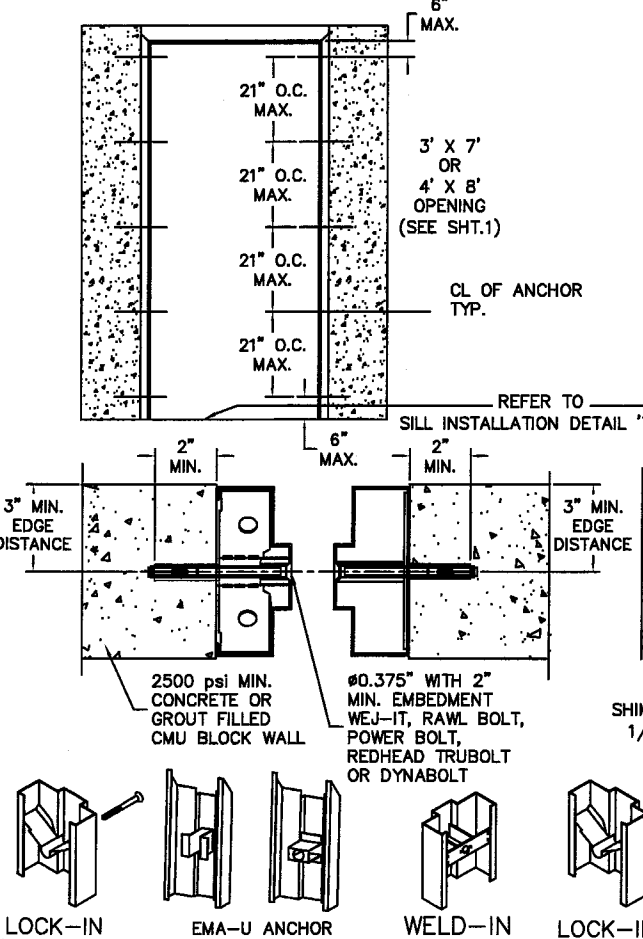
APL 10/10
 Gordon Thomas, P.E.
 3759 Blossom Court
 Mason, OH 45040
 Florida # 46718

PRODUCT RENEWED
 as complying with the Florida Building Code
 Acceptance No. 10-0209-09
 Expiration Date MAY 5, 2015
 By Ishay I. Chande
 Miami Dade Product Control Division

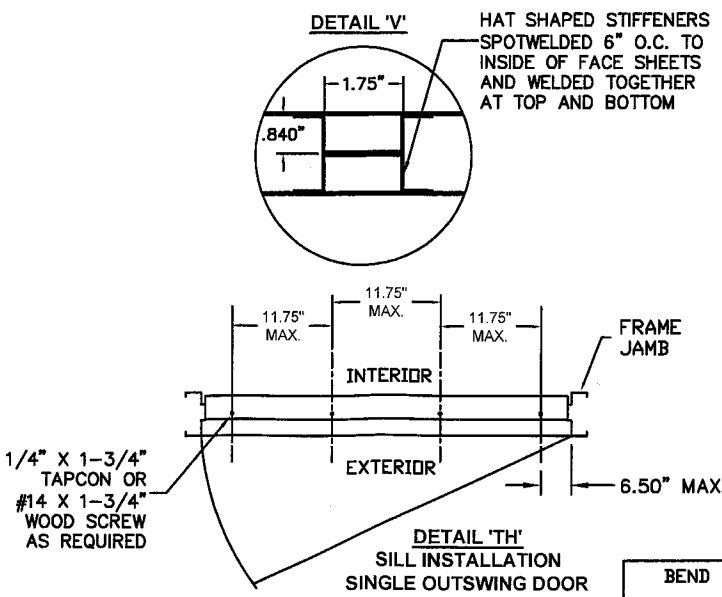
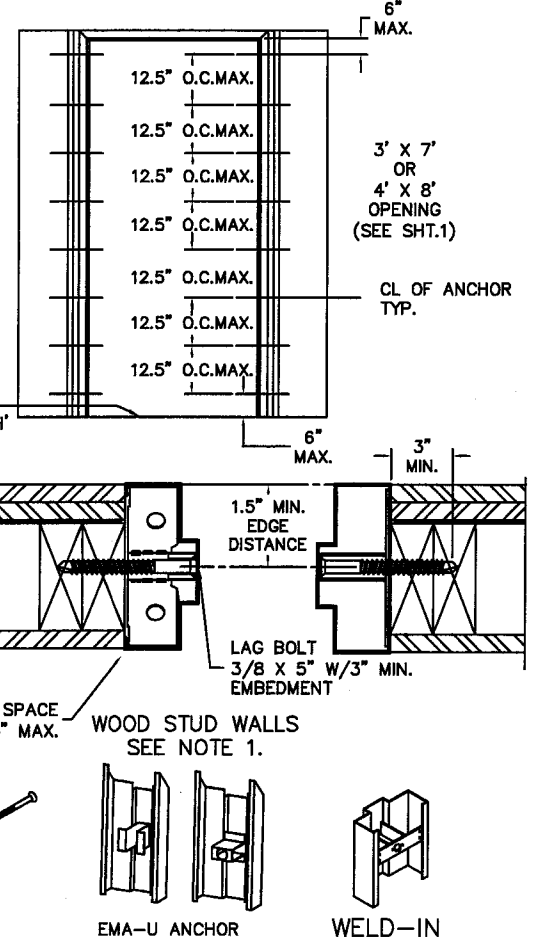
REVISIONS				
LTR	DESCRIPTION	DATE	APPROVED	
B	REVISED DWG	RAP	11/26/07	
C	REVISED DWG	RAP	12/12/07	
D	REVISED DWG	YMF	08/01/08	
E	REVISED PER_MDBCCO	YMF	01/30/09	
F	REVISED PER_MDBCCO	YMF	01/30/09	
G	REVISED DWG	YMF	01/04/10	
H	REVISED PER_MDBCCO	YMF	04/09/10	



D EXISTING MASONRY ANCHOR (EMA) INTO CONCRETE WALL OR CMU



E EXISTING MASONRY ANCHOR (EMA) WITH LAG BOLT INTO WOOD STUD WALL



NOTES:
 1. (*WOOD OR (*STEEL STRUCTURAL MEMBERS OF WOOD AND STEEL-STUD WALLS MUST BE DESIGNED TO CARRY AT LEAST 210 #/FT. LOAD FOR ASSEMBLIES RATED 50 PSF, 312 #/FT. FOR 75 PSF, AND 416 #/FT. FOR 100 PSF, WHICH SHOULD BE VERIFIED BY THE APPROPRIATE OFFICIAL.
 2. NUMBER OF ANCHORS FOR VARIOUS OPENING HEIGHTS IS LIMITED BY MAXIMUM DISTANCE BETWEEN ANCHORS, SHOWN ON THIS SHEET.
 3. CORE MATERIAL SHOWN WITHOUT DOOR CUTOUTS AND REINFORCEMENTS.
 4. APPLY CAULK AS NEEDED.
 5. FOR SILL INSTALLATION AND ANCHORING SEE SHT 3 & 4.

BEND RADIUS		Ingersoll Rand Security Technologies	
THIRD ANGLE PROJECTION			
DRAWN	DATE	TITLE MIAMI-DADE PRODUCT APPROVAL	
YMF	05/20/07	FRAME ANCHOR DETAILS & INSTALLATION DOOR CORE OPTIONS.	
CHECKED		SIZE	FLAT
APPROVED		DWG NO.	IRGS07
ENG. APPVL	11/15/07	SCALE	NTS
JPD		AUTOCAD	SHEET 4 of 13

TABLE 3.

PERIMETER SEAL HARDWARE WHEN WATER INFILTRATION REQUIREMENT DOES APPLY					
ITEM NUMBER SHT 3. TABLE 2	DESCRIPTION	ALLOWABLE DESIGN PRESSURE, PSF (*UP TO)	MODEL No./ MANUFACTURER	PART DETAIL	INSTALLATION DETAIL
12	THRESHOLD	+75	566/ZERO INT'L	'T1'	'P1'
			950/NGP	'T2'	'P2'
15	FAS-SEAL SWEEP	+75	STEELCRAFT	'S'	'P1' & 'P2'
21 or 14	SELF ADHESIVE DOOR SEAL	+75	8144F/ZERO INT'L	'U'	'M' & 'N'
			PS074/STEELCRAFT	'Q'	
22	DOOR SWEEP	+75	539/ZERO INT'L	'W1'	'N'
			202N/NGP	'W2'	
23	DOOR SWEEP	+75	139/ZERO INT'L	'X'	'P1'
24	ADJUSTABLE STOP	+75	475/ZERO INT'L	'Y1'	'M'
			170N/NGP	'Y2'	
25	RAIN DRIP CAP	+75	11/ZERO INT'L	'Z1'	'P1'
			16A/NGP	'Z2'	
26	DOOR TOP CAP	+75	STEELCRAFT	'R'	'M'

* - SEE ELEVATIONS AND DESIGN PRESSURES ON SHEET 1

TABLE 4.

PERIMETER SEAL HARDWARE WHEN WATER INFILTRATION REQUIREMENT DOES NOT APPLY					
ITEM NUMBER SHT 3. TABLE 2	DESCRIPTION	MODEL No. MANUFACTURER	PART DETAIL	INSTALLATION DETAIL	
12	THRESHOLD	566 BY ZERO INT'L	'T1'	'K'	
		950 BY NATIONAL GUARD	'T2'		
15	FAS-SEAL DOOR SWEEP	STEELCRAFT	'S'	'K'	
14	PS-074 SELF ADHESIVE WEATHERSTRIPPING	STEELCRAFT	'Q'	'J' & 'L'	
-	-	-	-	-	
-	-	-	-	-	
-	-	-	-	-	
26	DOOR TOP CAP	STEELCRAFT	'R'	OPTIONAL	

REVISIONS

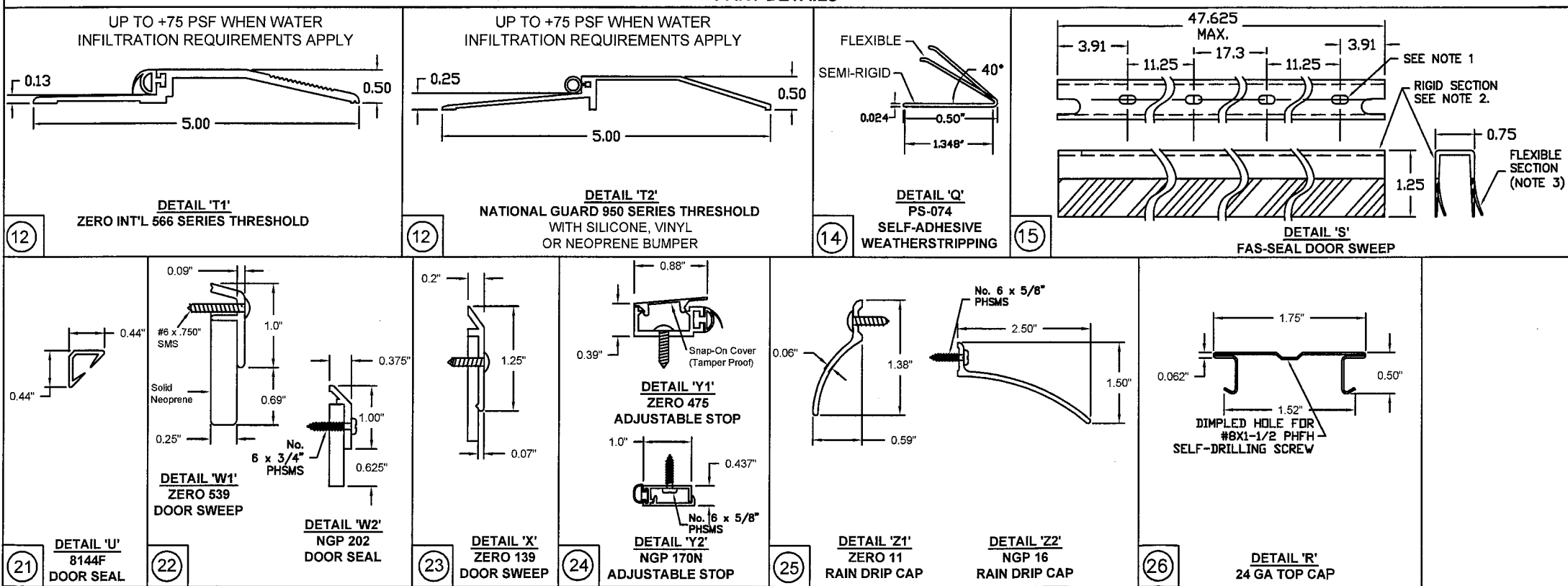
LTR	DESCRIPTION	DATE	APPROVED
A	APPROVAL DWG	YMF 05/20/07	
B	REVISED DWG	RAP 10/11/07	
C	REVISED DWG	RAP 12/10/07	
D	REVISED DWG	YMF 08/01/08	
E	REVISED PER_MDBCCO	YMF 01/30/09	
F	REVISED PER_MDBCCO	YMF 02/04/09	
G	REVISED DWG	YMF 01/04/10	
H	REVISED DWG	YMF 04/09/10	

NOTES:

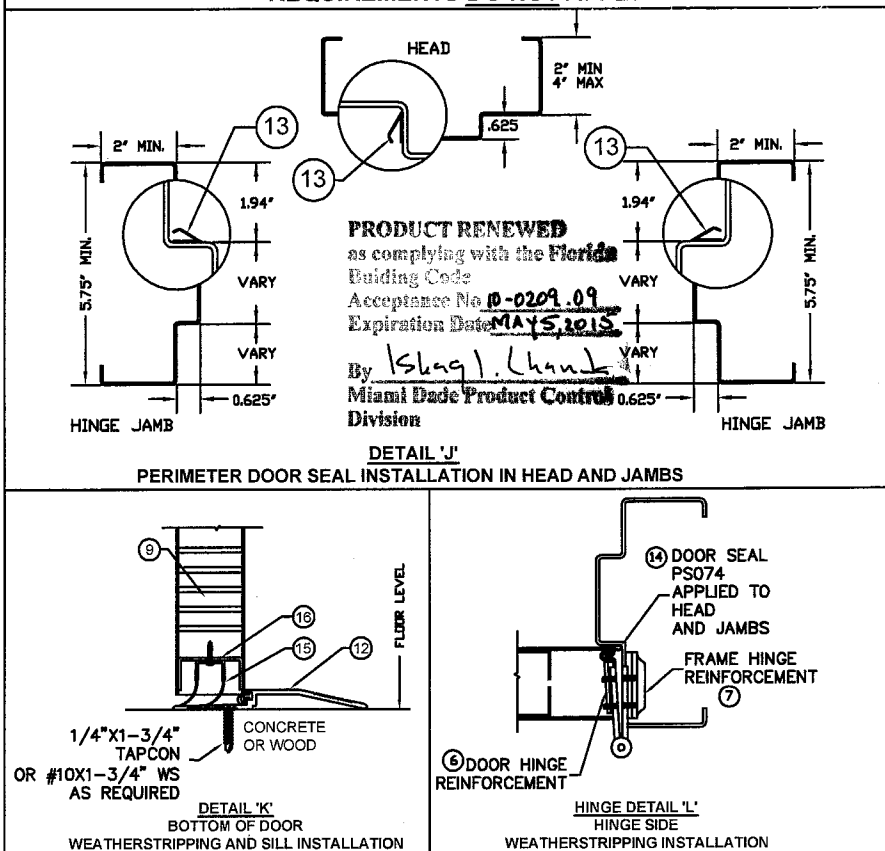
1. SLOT LOCATIONS MAY VARY WITH DIFFERENT DOOR WIDTH.
2. DOOR SWEEP RIGID SECTION IS MADE OF PRO-FAX #PD-199 POLYPROPYLENE HOMOPOLYMER.
3. DOOR SWEEP FLEXIBLE SECTION IS MADE OF SANTOPRENE #101-73
4. FAS-SEAL DOOR SWEEP (14), AND THRESHOLD (11) ARE REQUIRED FOR ALL INSTALLATIONS.

[Signature] 4/14/10
 Gordon Thomas, P.E. Date
 3759 Blossom Court
 Mason, OH 45040
 Florida # 46718

PART DETAILS



PERIMETER SEAL INSTALLATION DETAILS WHEN WATER INFILTRATION REQUIREMENTS DO NOT APPLY



BEND RADIUS

THIRD ANGLE PROJECTION

DRAWN YMF

CHECKED

APPROVED

ENG. APPVL JPD

DATE 05/20/07

10/11/07

IR Ingersoll Rand
 Security Technologies

TITLE MIAMI-DADE PRODUCT APPROVAL

SINGLE GLASS DOOR PERIMETER SEAL HARDWARE.

SIZE FLAT DWG NO. IRGS07 REV H

SCALE: NTS AUTOCAD SHEET 5 of 13

REVISIONS

LTR	DESCRIPTION	DATE	APPROVED
A	APPROVAL DWG	YMF 05/20/07	
B	REVISED DWG	RAP 11/26/07	
C	REVISED DWG	RAP 12/12/07	
D	REVISED DWG	YMF 08/06/08	
E	REVISED PER_MDBCCO	YMF 01/30/09	
F	REVISED PER_MDBCCO	YMF 02/04/09	
G	REVISED DWG	YMF 01/04/10	
H	REVISED DWG	YMF 04/09/10	

AVAILABLE DOOR CONFIGURATIONS

TABLE 5.

CORE MATERIAL PER SHT.4	MAXIMUM OPENING SIZE		SKIN MATERIAL	
	WIDTH	HEIGHT	DESCR.	GA./MIN. THK
HONEYCOMB POLYSTYRENE POLYURETHANE (POLYISOCYANURATE) TEMPERATURE RISE STEEL STIFFENED	VARIES SEE SHT 2 TABLE 1		CRS GALV	16/.053" 14/.067"
HONEYCOMB POLYSTYRENE POLYURETHANE	VARIES SEE SHT 2 TABLE 1		STAINLESS STEEL	16/.053"

AVAILABLE FRAME CONFIGURATIONS

TABLE 6.

FRAME SERIES	JAMB DEPTH	MAXIMUM OPENING SIZE		MATERIAL	
		WIDTH	HEIGHT	DESCR.	GA./MIN. THK
F	5.75" MIN.	VARIES SEE SHT 2 TABLE 1		CRS/HRS GALV	16/.053" 14/.067" 12/.099"
				STAINLESS STEEL	16/.053"
MU	5.75" MIN.	VARIES SEE SHT 2 TABLE 1		CRS/HRS GALV	16/.053" 14/.067"

NOTES:

- DOOR CONSTRUCTION
 - MINIMUM DOOR THICKNESS - 1 3/4"
 - DOOR SIZE MAY VARY, SUBJECTED TO COMPLIANCE WITH FLORIDA BUILDING CODE AND PRODUCT AVAILABILITY FROM MANUFACTURER (SEE SHEET 2 FOR AVAILABLE HARDWARE)
- FRAME CONSTRUCTION
 - MINIMUM JAMB DEPTH - 5 3/4", STOP HEIGHT - 5/8"
 - FRAMES AVAILABLE AS FLUSH (F-SERIES) AND MULT-USE (MU-SERIES) (SEE TABLE 6)
- FOR DOOR AND FRAME MATERIAL SPECIFICATIONS REFERENCE SEE TABLE 7.

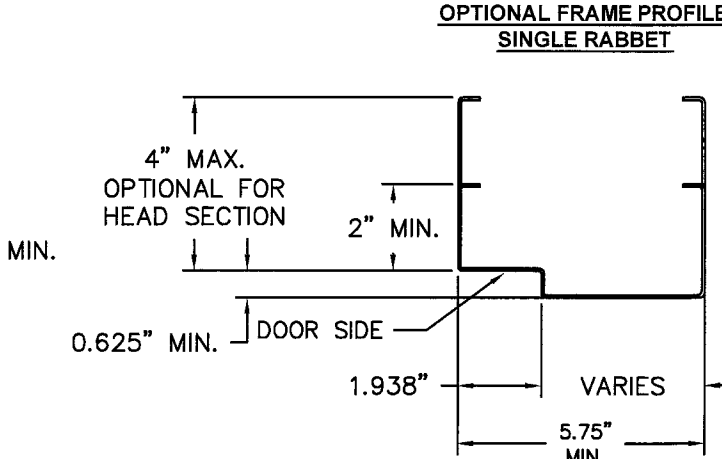
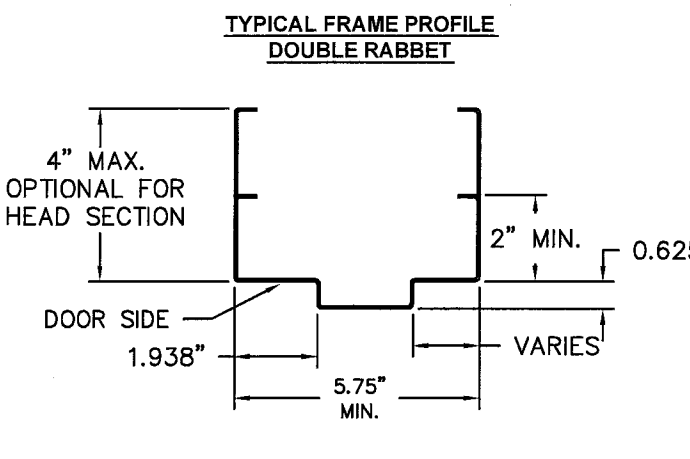
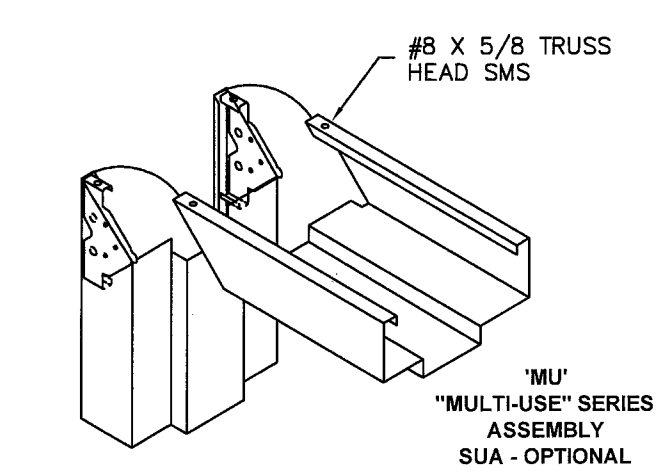
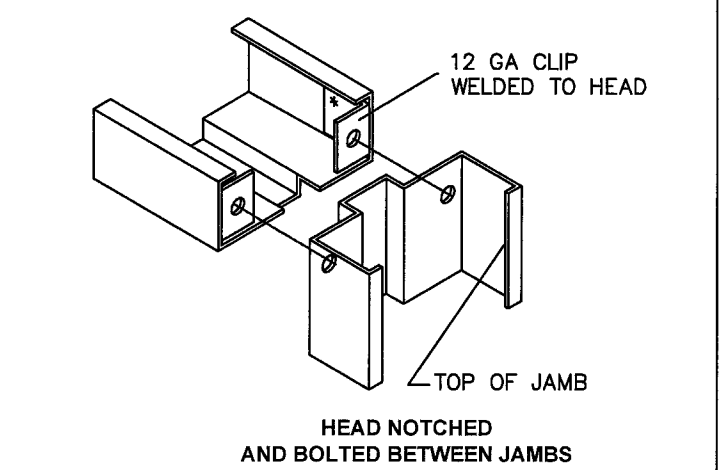
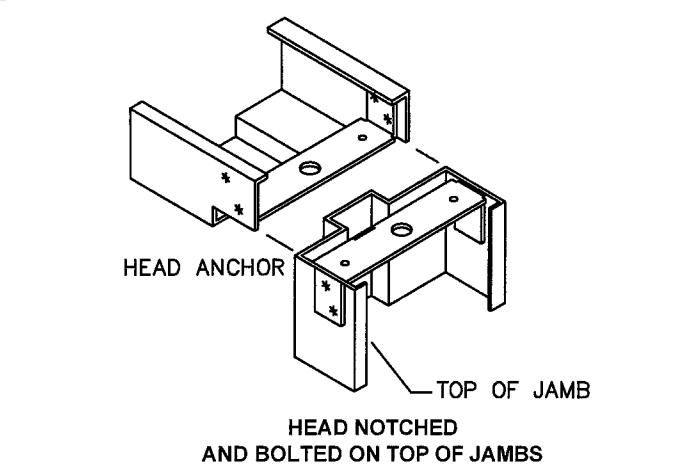
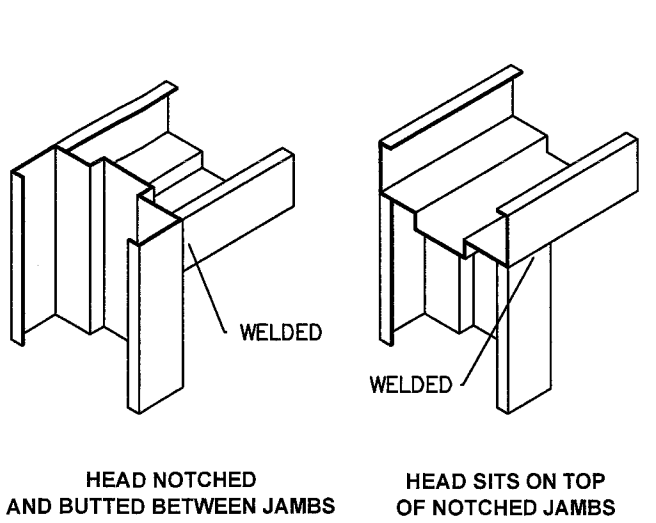
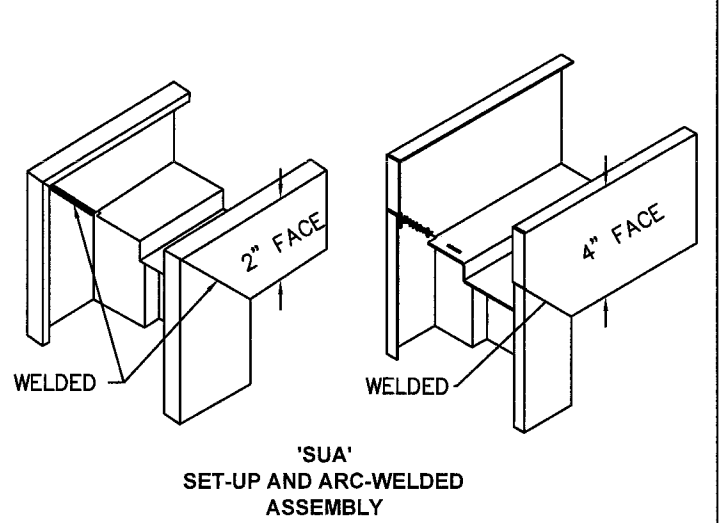
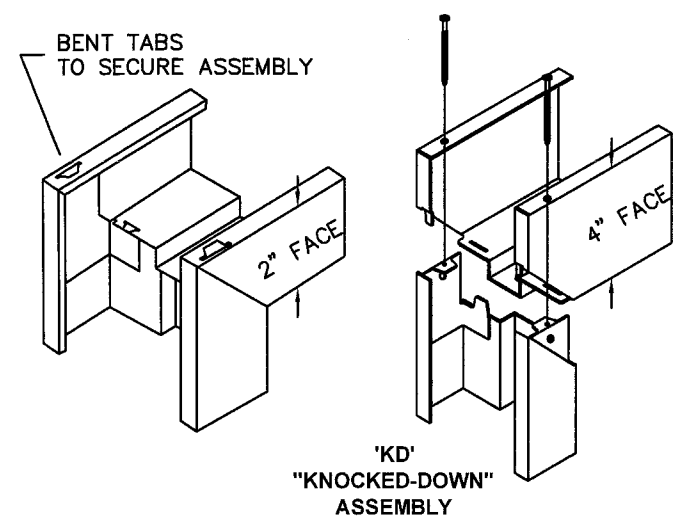


TABLE 7. STEEL MECHANICAL PROPERTIES

MATERIAL	ASTM REF.	YIELD KSI	TENSILE KSI
CRS	A1008	MIN. 26.5	MIN. 46
HRS	A1011		
GALV: A60	A924	MIN. 31.2	MIN. 73.2
SS: 304,306	A240		

Gordon Thomas 4/14/10
 Gordon Thomas, P.E. Date
 3759 Blossom Court
 Mason, OH 45040
 Florida # 46718

PRODUCT RENEWED
 as complying with the Florida Building Code
 Acceptance No 10-0209-09
 Expiration Date MAY 5, 2015
 By *Shay L. Chaudhary*
 Miami Dade Product Control Division

BEND RADIUS

THIRD ANGLE PROJECTION

DRAWN YMF DATE 05/20/07

CHECKED

APPROVED

ENG. APPVL JPD 11/15/07

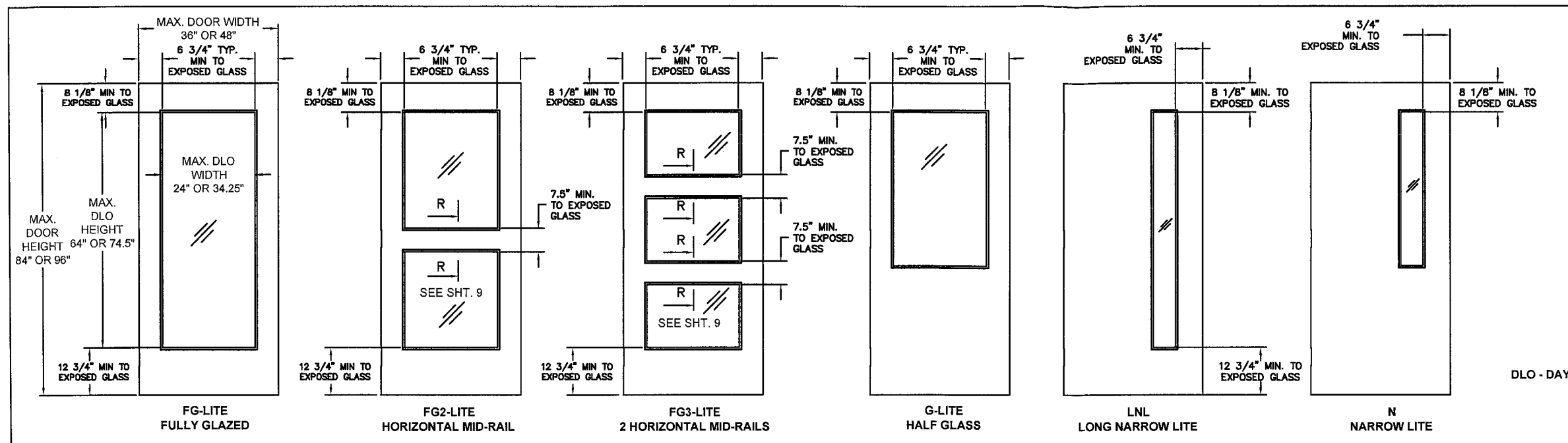
IR Ingersoll Rand Security Technologies

TITLE MIAMI-DADE PRODUCT APPROVAL

FRAME PROFILE, CORNER DETAILS AND DOOR FRAME MATERIAL, AND SIZE OPTIONS.

SIZE FLAT DWG NO. IGRS07 REV H

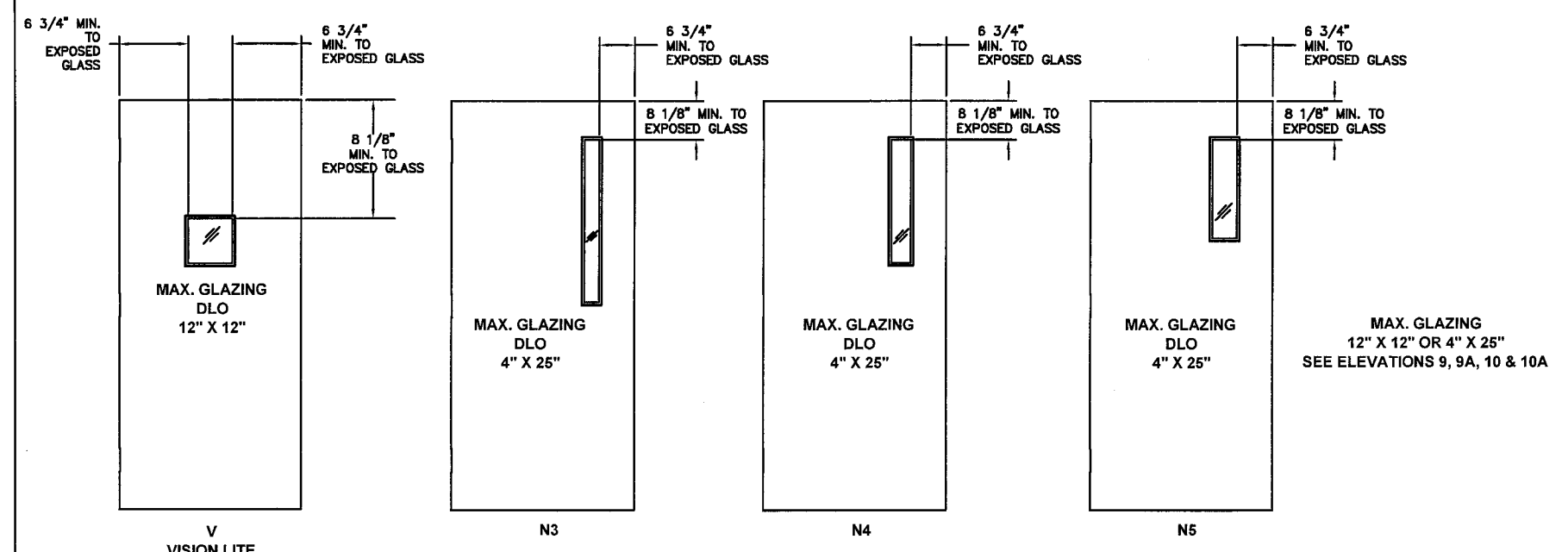
SCALE: NTS AUTOCAD SHEET 6 of 13



REVISIONS				
LTR	DESCRIPTION	DATE	APPROVED	
A	APPROVAL DWG	YMF	05/20/07	
B	REVISED DWG	RAP	11/26/07	
C	REVISED DWG	RAP	12/12/07	
D	REVISED DWG	YMF	07/29/08	
E	REVISED PER_MDBCCO	YMF	01/30/09	
F	REVISED PER_MDBCCO	YMF	02/04/09	
G	REVISED DWG	YMF	01/04/10	
H	REVISED DWG	YMF	04/09/10	

DLO - DAY LIGHT OPENING

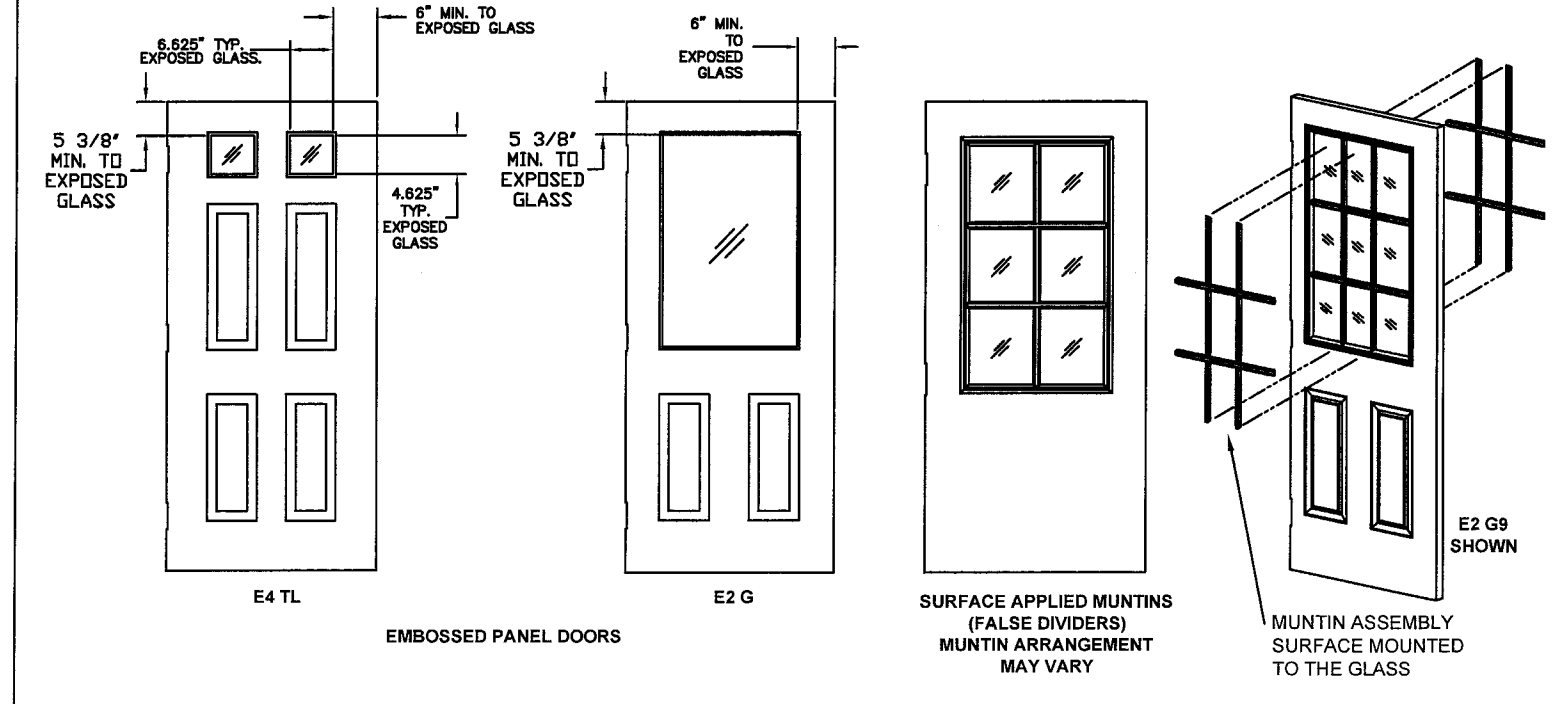
APR 17 9/14/10
 Gordon Thomas, P.E. Date
 3759 Blossom Court
 Mason, OH 45040
 Florida # 46718



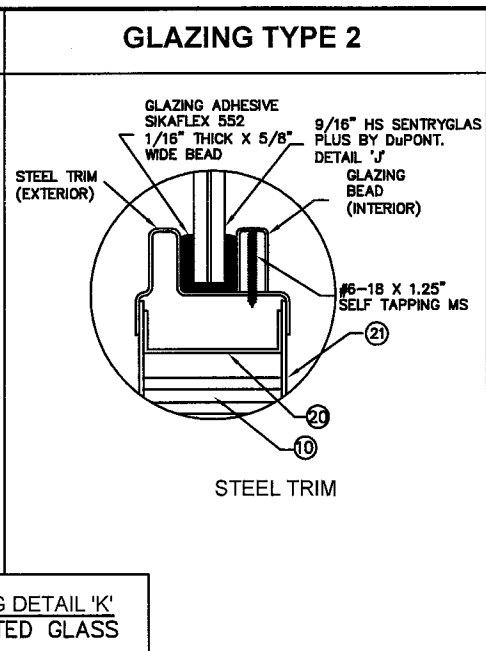
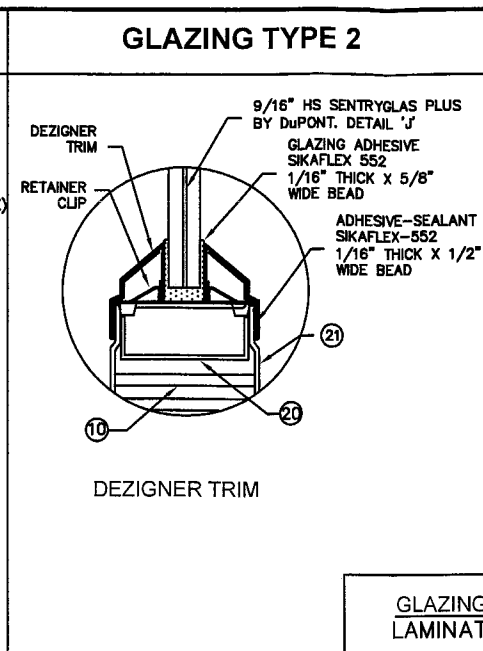
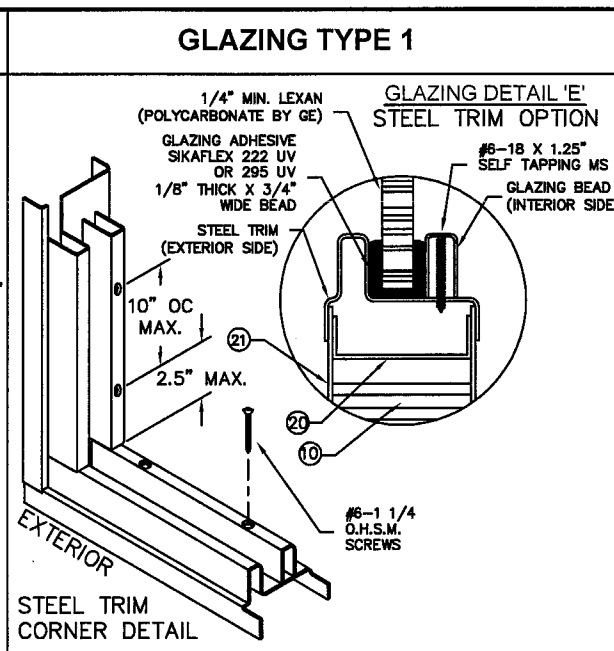
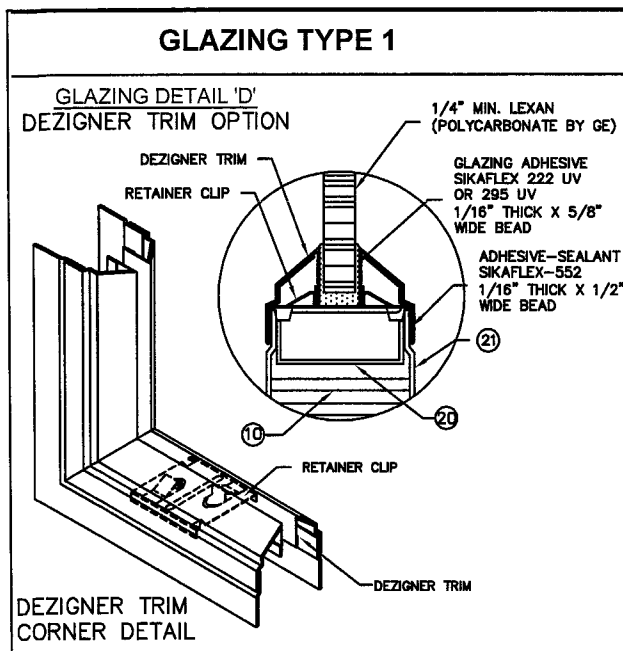
PRODUCT RENEWED
 as complying with the Florida
 Building Code
 Acceptance No 10-0209-09
 Expiration Date MAY 5 2015
 By *Ishag J. Ghann*
 Miami Dade Product Control
 Division

NOTES:

- DOOR CONSTRUCTION
 - MINIMUM DOOR THICKNESS - 1 3/4"
 - MAXIMUM GLAZING DLO HEIGHT AND WIDTH AS PER SHEET 2.
 - GLAZING OPENING DLO SIZE WILL CHANGE IN PROPORTION WITH DOOR SIZE.
 - DOOR SIZE MAY VARY, SUBJECTED TO COMPLIANCE WITH FLORIDA BUILDING CODE AND PRODUCT AVAILABILITY FROM MANUFACTURER.
- FRAME CONSTRUCTION
 - MINIMUM JAMB DEPTH - 5 3/4", STOP HEIGHT - 5/8"
 - FRAMES AVAILABLE AS FLUSH (F-SERIES) AND MULT-USE (MU-SERIES) (SEE TABLE.6 SHT 6.)
- FOR DOOR & FRAME MATERIAL SPECIFICATIONS REFERENCE SEE TABLE. 7 SHT 6.
- GLASS LIGHTS NOT LIMITED TO THOSE SHOWN PROVIDED DIMENSIONS SHOWN ARE MAINTAINED, NOT TO EXCEED DLO PER THIS SHEET



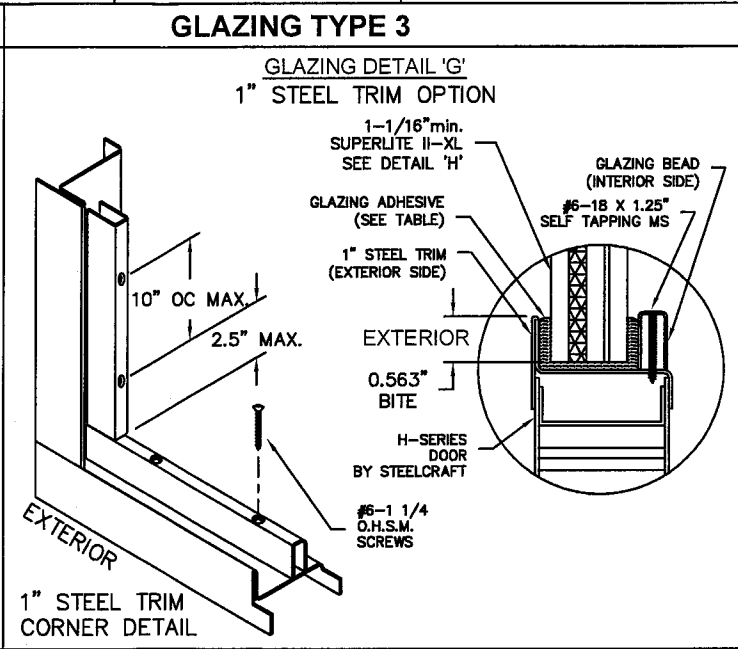
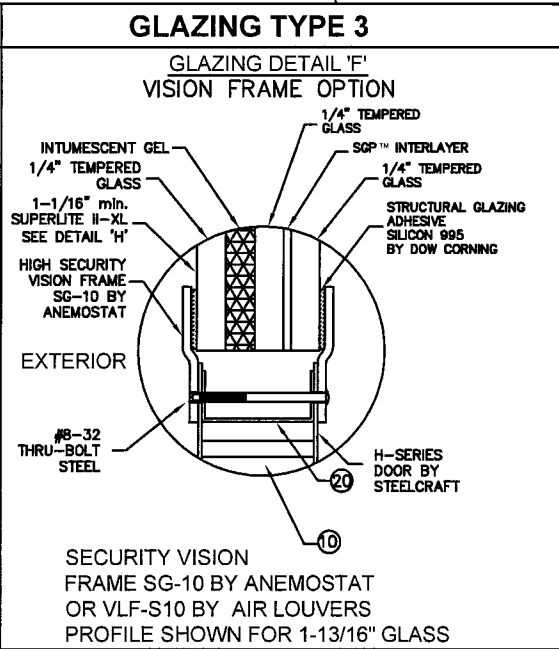
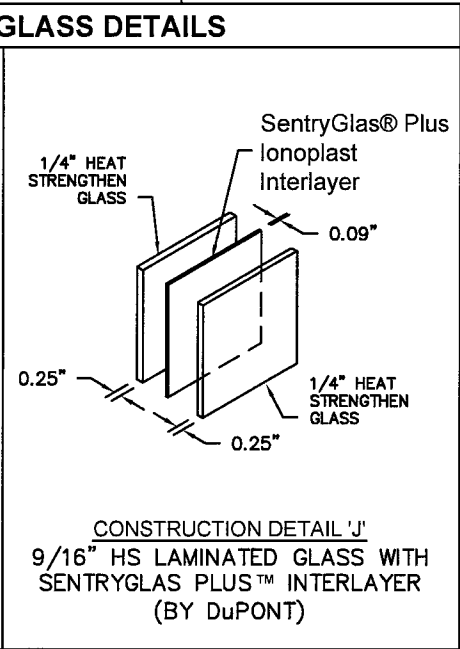
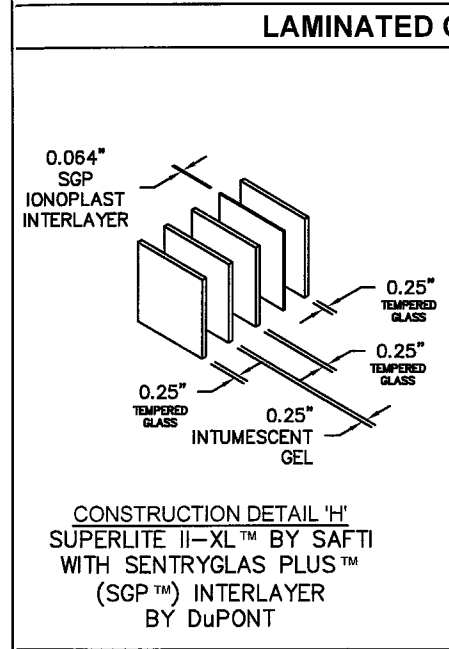
BEND RADIUS		 Ingersoll Rand Security Technologies	
THIRD ANGLE PROJECTION			
DRAWN	DATE	TITLE MIAMI-DADE PRODUCT APPROVAL	
YMF	05/20/07	GLASS DOOR CONFIGURATIONS.	
CHECKED		SIZE	FLAT
APPROVED		DWG. NO.	IRGS07
ENG. APPVL	DATE	SCALE	REV
JPD	11/15/07	NTS	H
		AUTOCAD	SHEET 7 of 13



REVISIONS				
LTR	DESCRIPTION	DATE	APPROVED	
A	APPROVAL DWG.	YMF	05/20/07	
B	REVISED DWG.	RAP	11/26/07	
C	REVISED DWG.	RAP	12/12/07	
D	REVISED DWG.	YMF	08/06/08	
E	REVISED PER_MDBCCO	YMF	01/30/09	
F	REVISED PER_MDBCCO	YMF	02/05/09	
G	REVISED DWG	YMF	01/04/10	
H	REVISED DWG	YMF	04/09/10	

NOTES:

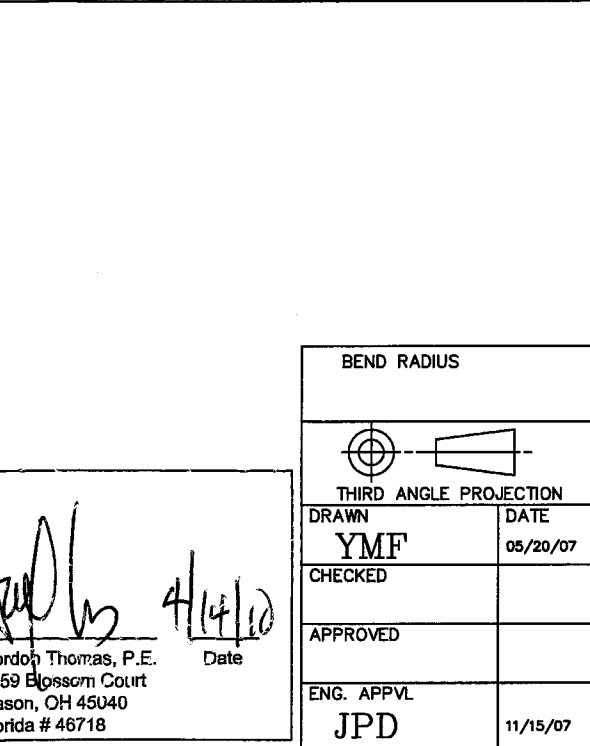
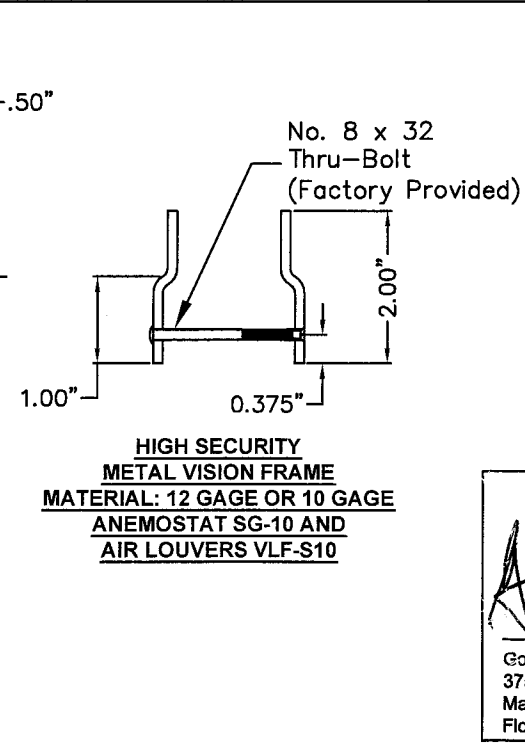
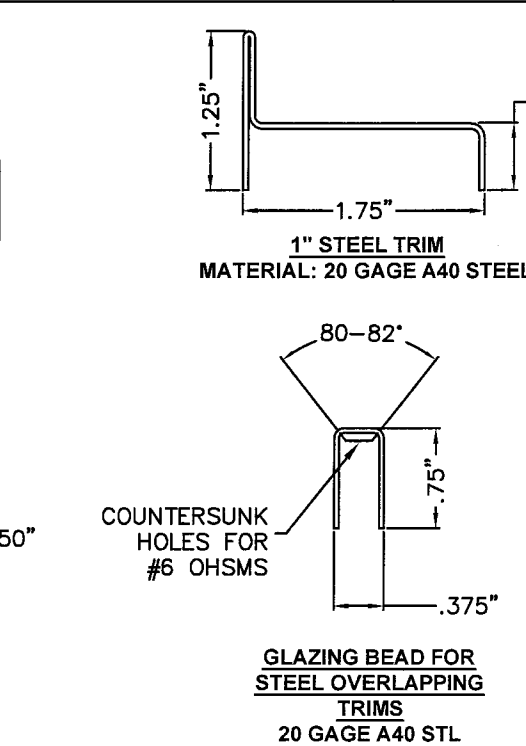
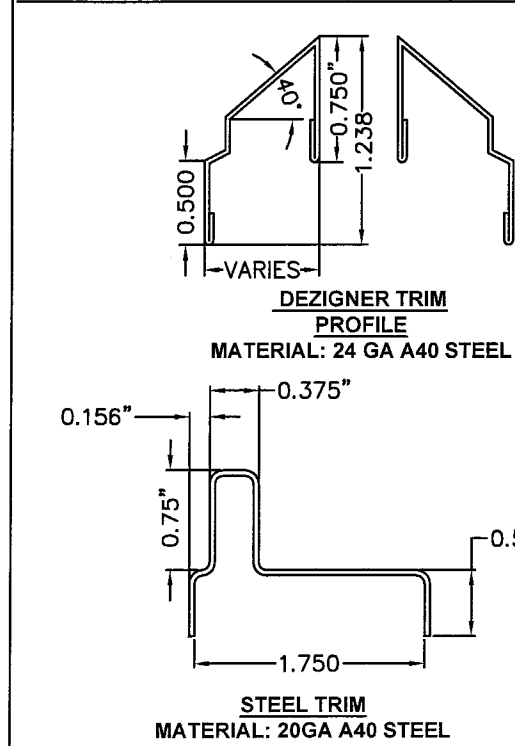
- SEE SHT.1 FOR ELEVATIONS, SHT.2 FOR SIZES AND SHT.6 FOR DOOR & FRAME MATERIAL SPECIFICATIONS.
- SEE SHT.3 NOTE 2. FOR ANCHOR REQUIREMENTS
- SEE SHT. 4 FOR WALL CONSTRUCTION AND ANCHORING SYSTEM
- SEE SHT. 6 FOR AVAILABLE OPENING SIZES, JAMB DEPTHS AND SPECIFICATIONS
- APPROVED HARDWARE INSTALLATION IS PER MANUFACTURER'S INSTRUCTIONS



PRODUCT RENEWED
as complying with the Florida Building Code
Acceptance No. 10-0209-09
Expiration Date MAY 5, 2015
By [Signature]
Miami Dade Product Control Division

TABLE 8.

GLAZING TYPES AND METHODS				
TYPE	GLAZING MATERIAL	TRIM TYPE	SEALANT -ADHESIVE	GLAZING ADHESIVE
	1			
2	9/16" HS LAMINATED GLASS WITH SENTRYGLAS PLUS™ INTERLAYER (BY DUPONT) DETAIL 'K'	DEZIGNER 1/2" STEEL TRIM 1" STEEL TRIM	SIKAFLEX 552	SIKAFLEX 552 OR DOW CORNING 995/975 1/16" X 5/8" BEAD
3	SUPERLITE II-XL™ BY SAFTI WITH SENTRYGLAS PLUS™ INTERLAYER (BY DUPONT) DETAILS 'F' & 'G'	1" STEEL TRIM (DETAIL 'G') SECURITY VISION FRAME SG-10 BY ANEMOSTAT OR VLF-S10 BY AIR LOUVERS (DETAIL 'F')	NONE NONE	SIKAFLEX 552 OR DOW CORNING 995/975 1/16" X 5/8" BEAD



Gordon Thomas, P.E.
3759 Blossom Court
Mason, OH 45040
Florida # 46718

Date 4/14/10

BEND RADIUS

THIRD ANGLE PROJECTION

DRAWN YMF

CHECKED

APPROVED

ENG. APPVL JPD

DATE 05/20/07

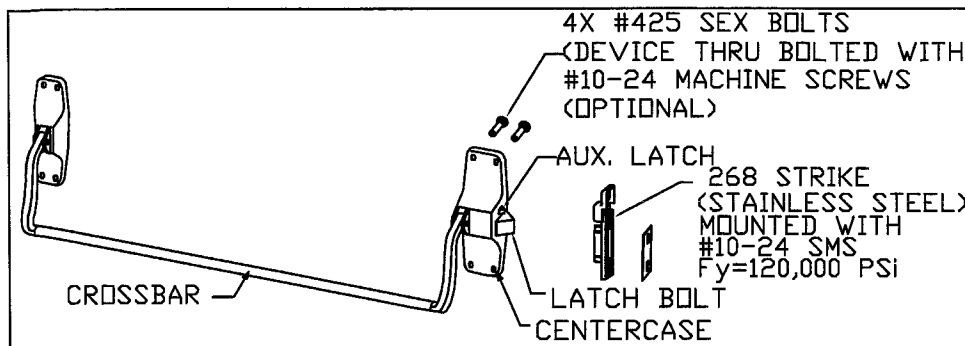
11/15/07

IR Ingersoll Rand
Security Technologies

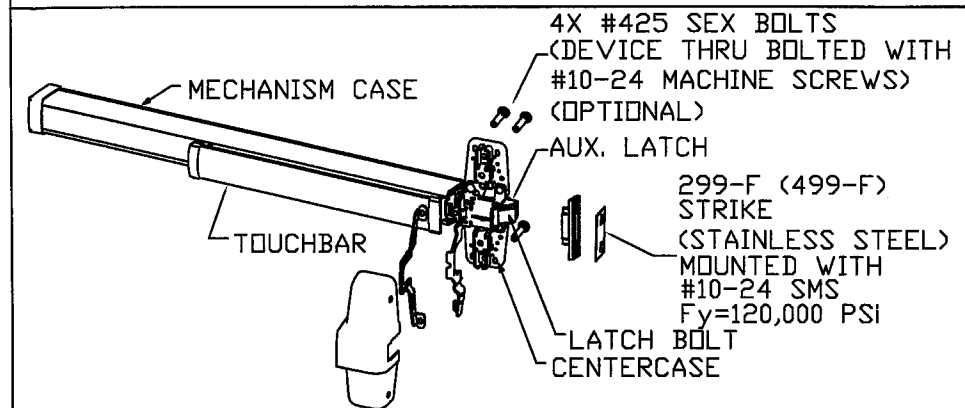
TITLE MIAMI-DADE PRODUCT APPROVAL
GLASS TRIM OPTIONS.

SIZE FLAT DWG NO. IRGS07 REV H

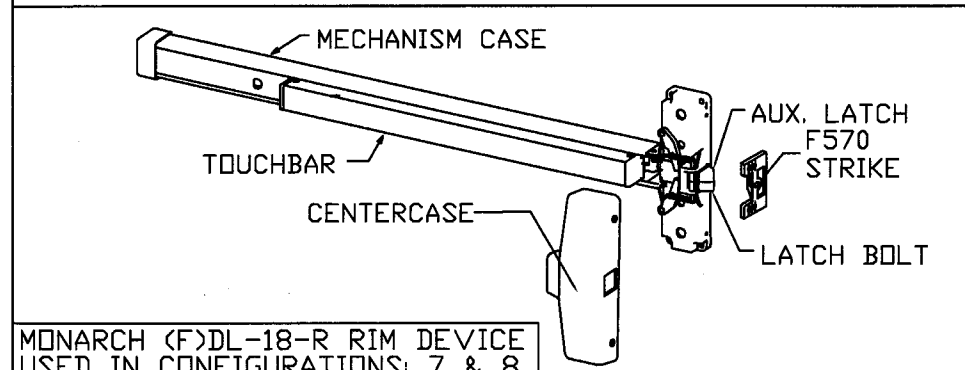
SCALE: NTS AUTOCAD SHEET 8 of 13



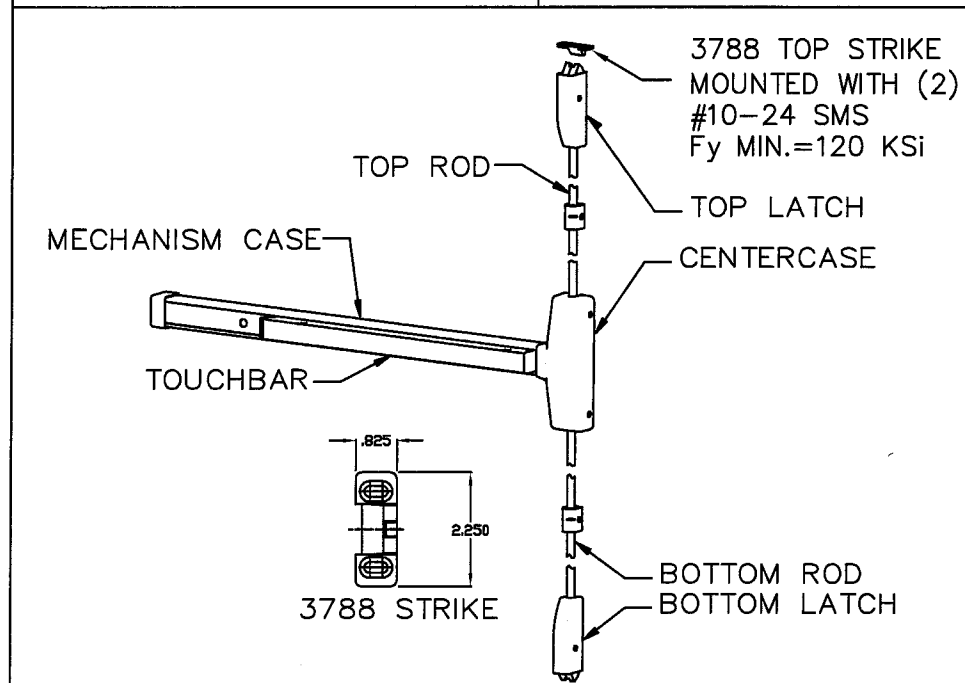
VON DUPRIN 88-F RIM DEVICE, USED IN CONFIGURATIONS: 7 & 8



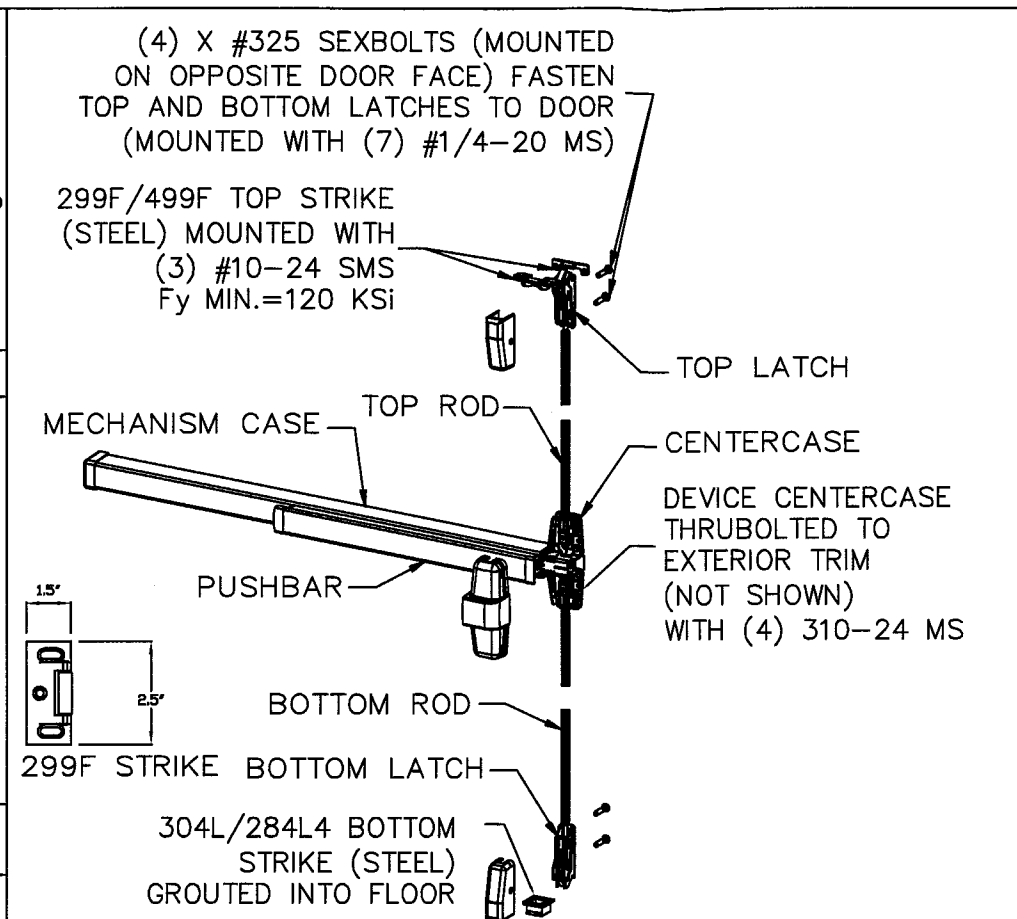
VON DUPRIN 98/99(F) RIM DEVICE USED IN CONFIGURATIONS: 7 & 8



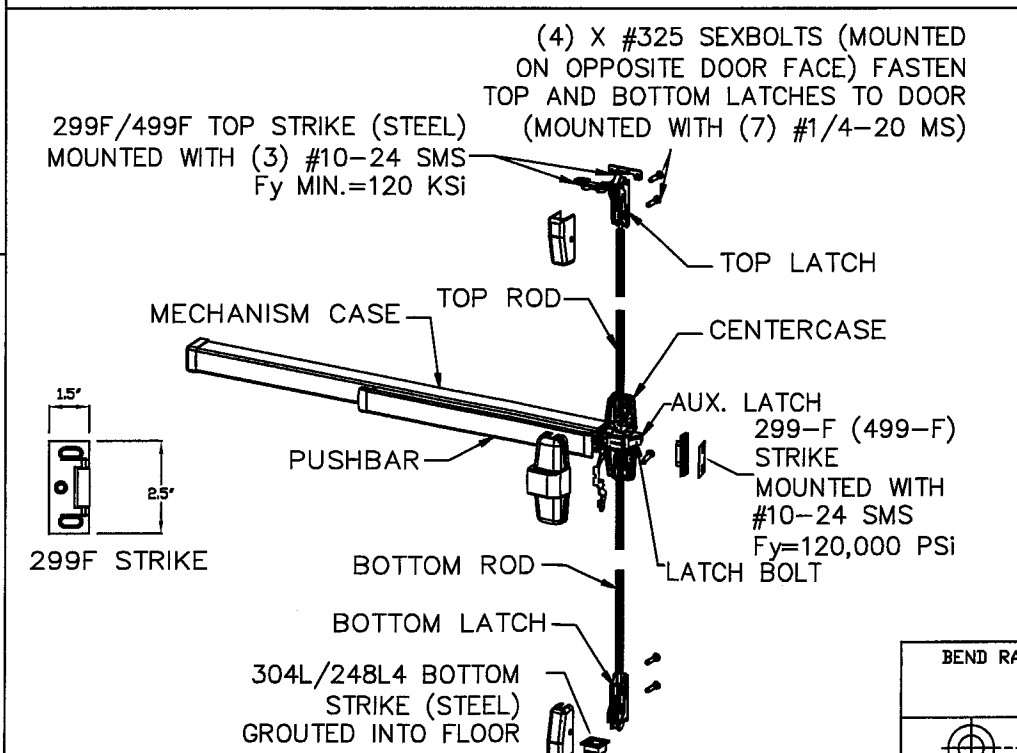
MONARCH (F)DL-18-R RIM DEVICE USED IN CONFIGURATIONS: 7 & 8



MONARCH (F)18-V SURFACE VERTICAL ROD EXIT DEVICE USED IN CONFIGURATIONS: 3



VON DUPRIN 98/927(F) SURFACE VERTICAL ROD EXIT DEVICE USED IN CONFIGURATIONS: 3



VON DUPRIN 98/9957(F) THREE-POINT EXIT DEVICE USED IN CONFIGURATIONS: 5 & 6

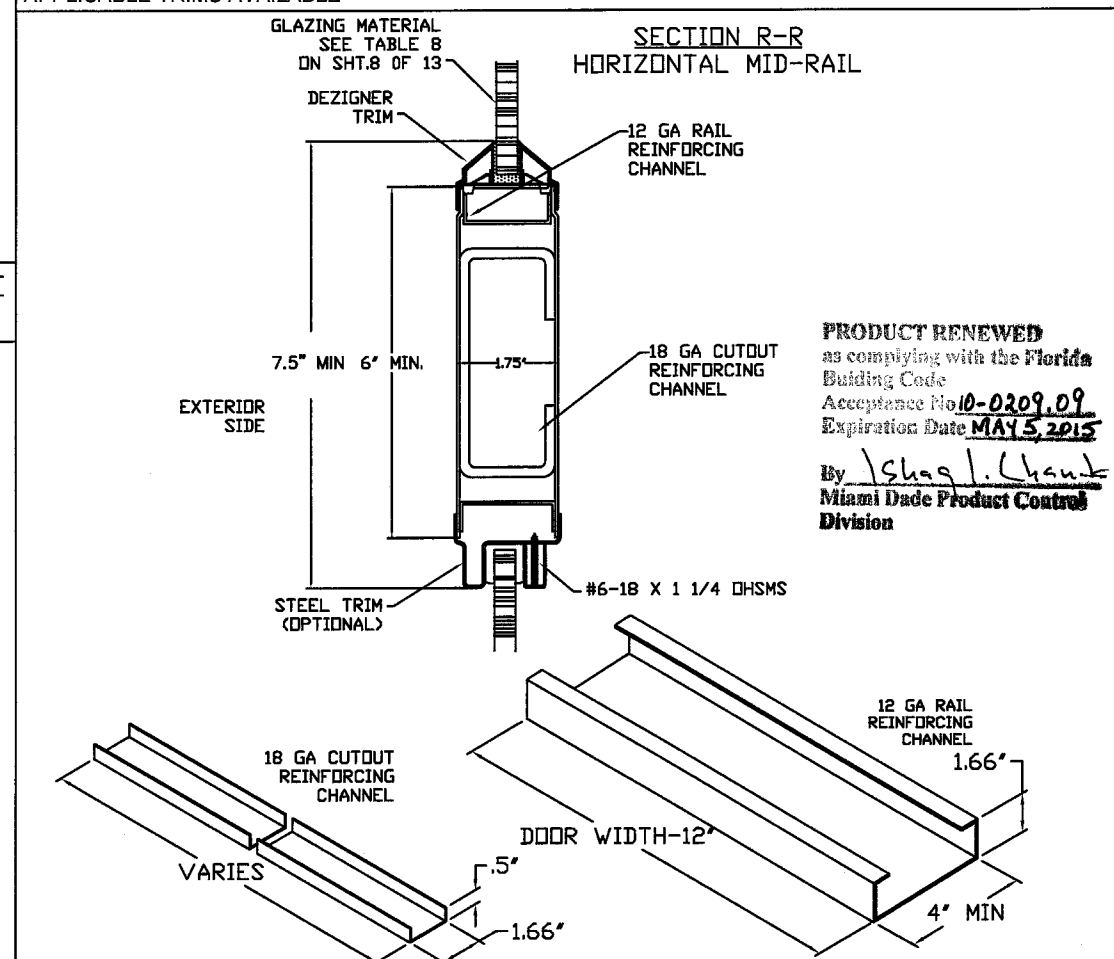
Gordon Thomas 4/14/10
 Gordon Thomas, P.E. Date
 3759 Blossom Court
 Mason, OH 45040
 Florida #46718

REVISIONS

LTR	DESCRIPTION	DATE	APPROVED
A	APPROVAL DWG	YMF 05/20/07	
B	REVISED DWG	RAP 11/26/07	
C	REVISED DWG	RAP 12/12/07	
D	REVISED DWG	YMF 07/28/08	
E	REVISED PER_MDBCCD	YMF 01/30/09	
F	REVISED PER_MDBCCD	YMF 02/05/09	
G	REVISED DWG	YMF 01/04/10	
H	REVISED DWG	YMF 04/09/10	

NOTES:

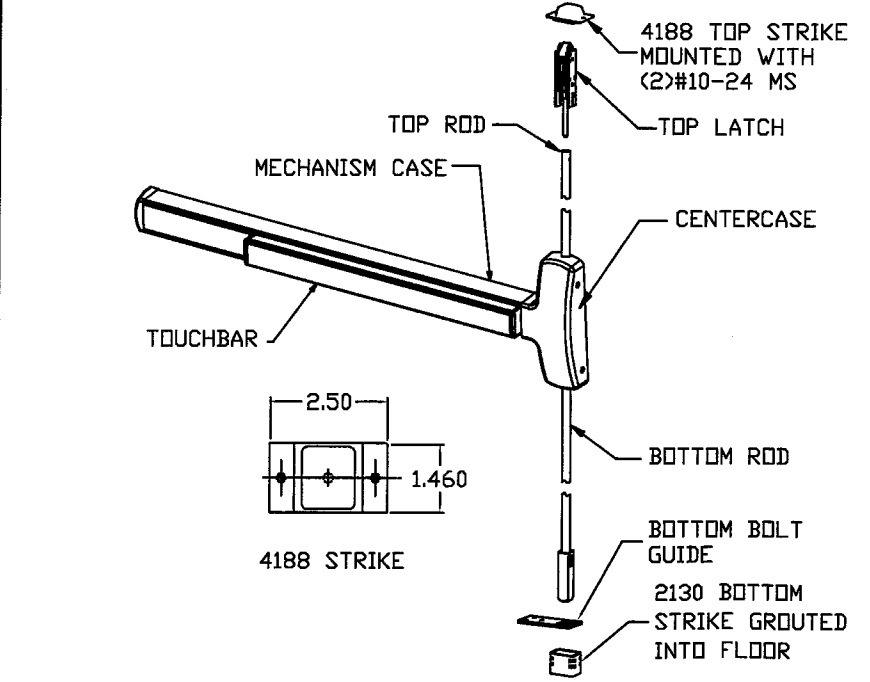
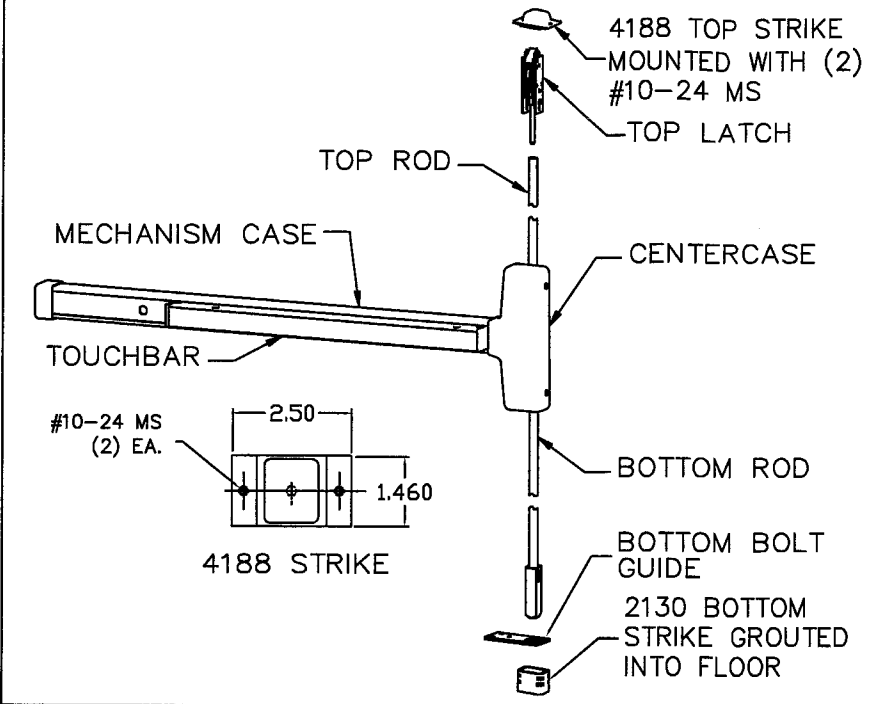
- ELECTRICAL FUNCTIONS/INSTALLATION IS NOT PART OF THIS APPROVAL, TO BE REVIEWED AND APPROVED BY BUILDING OFFICIAL
- EXIT HARDWARE OPTIONS:
 FOR 98/99 & XP98/99 SERIES - FUNCTIONS E, RX, LX, SS, EL, QEL, CX, F; TRIM: ALL APPLICABLE TRIMS AVAILABLE.
 FOR 88-F SERIES - FUNCTION E; TRIM: ALL APPLICABLE TRIMS AVAILABLE. PN MODEL OFFERED.
 FOR 33/35-F SERIES - FUNCTIONS RX, LX, EL, QEL, SS; TRIM: ALL APPLICABLE TRIMS AVAILABLE.
 FOR 2670 GUARD-X; TRIM: ALL APPLICABLE TRIMS AVAILABLE.
 FOR 18-R, F-18-C & 18-V SERIES - FUNCTIONS DL, EA, HWEA, DE, ELR, F, DM, LM, AE, LK, SM; TRIM: ALL APPLICABLE TRIMS AVAILABLE



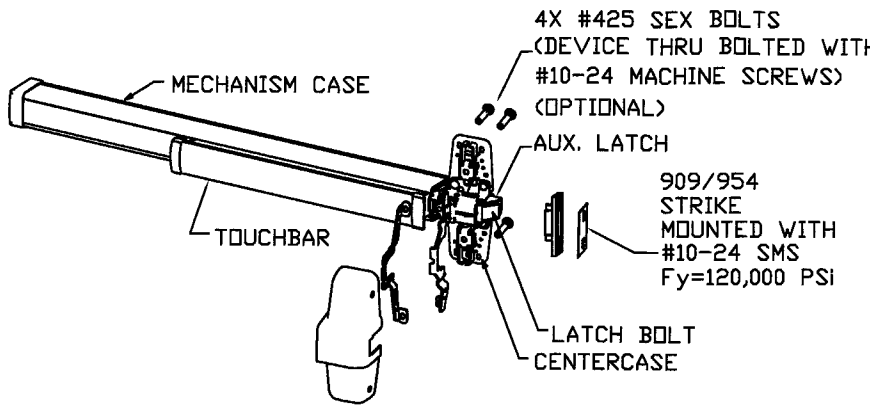
PRODUCT RENEWED
 as complying with the Florida Building Code
 Acceptance No. 10-0209.09
 Expiration Date **MAY 5, 2015**
 By *Shag L. Chant*
 Miami Dade Product Control Division

BEND RADIUS		Ingersoll Rand Security Technologies	
THIRD ANGLE PROJECTION			
DRAWN	DATE	TITLE MIAMI-DADE PRODUCT APPROVAL	
YMF	05/20/07	IR EXIT HARDWARE FOR GLASS SINGLE DOORS.	
CHECKED	CDATE	SIZE	FLAT
APPROVED	ADATE	DWG NO.	IRGS07
ENG. APPVL	EDATE	SCALE	REV H
JPD	11/15/07	NTS	9 of 13

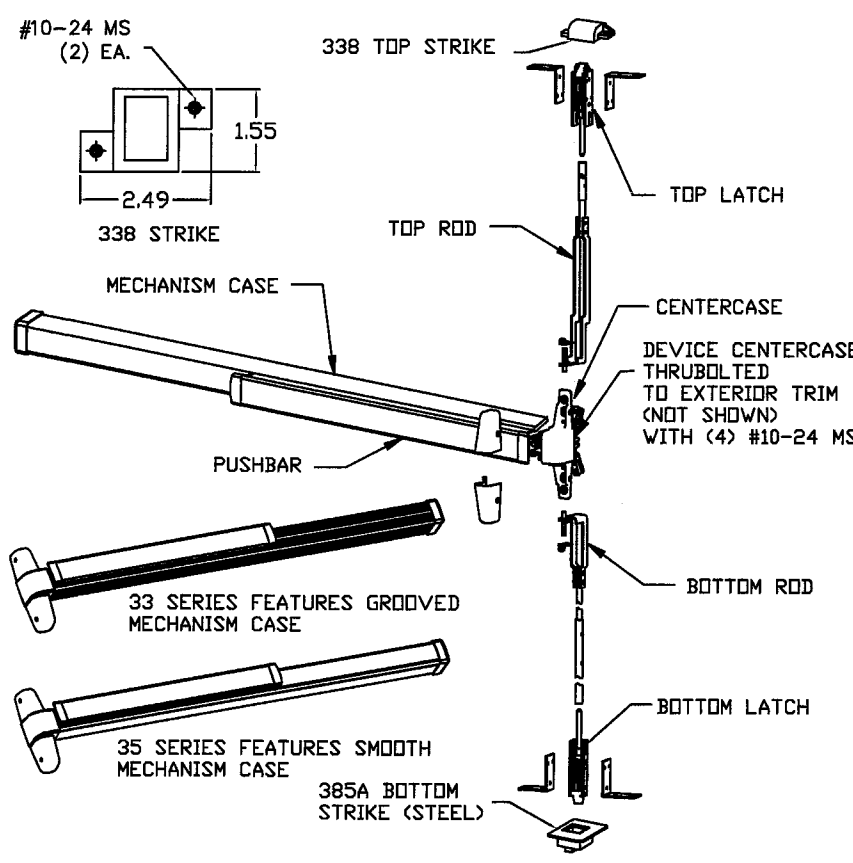
MONARCH F-18-C CONCEALED VERTICAL ROD EXIT DEVICE
USED IN CONFIGURATIONS: 4



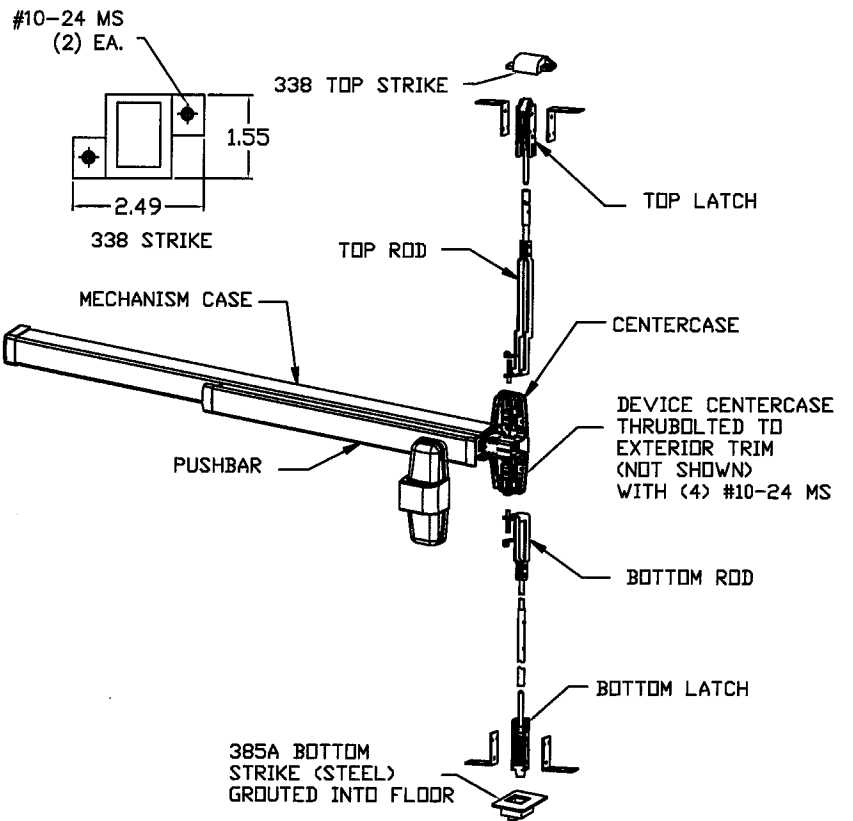
CONCEALED VERTICAL ROD EXIT DEVICE FALCON F-25-C
USED IN DOOR CONFIGURATION 4 (SEE SHT.1)



VON DUPRIN XP98/99(F)
USED IN CONFIGURATIONS: 9 & 9A



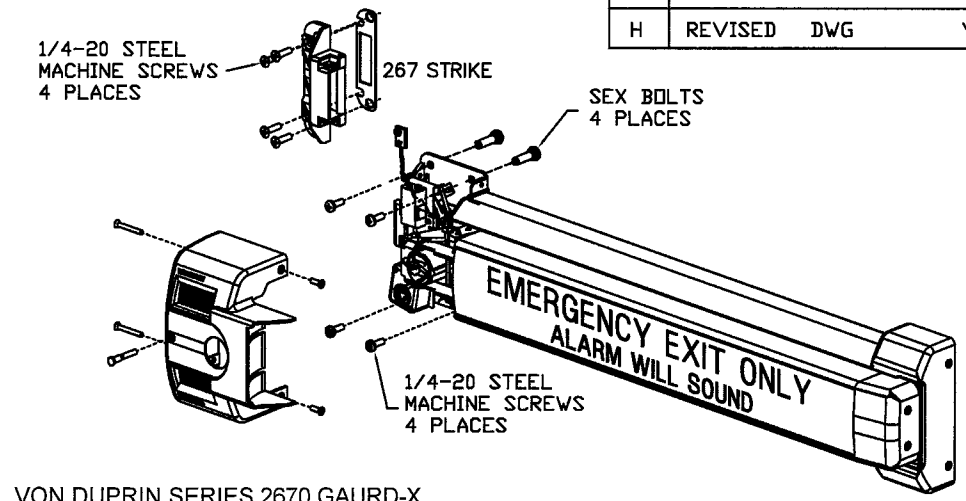
VON DUPRIN SERIES 33/3547A-F
USED IN CONFIGURATIONS: 4



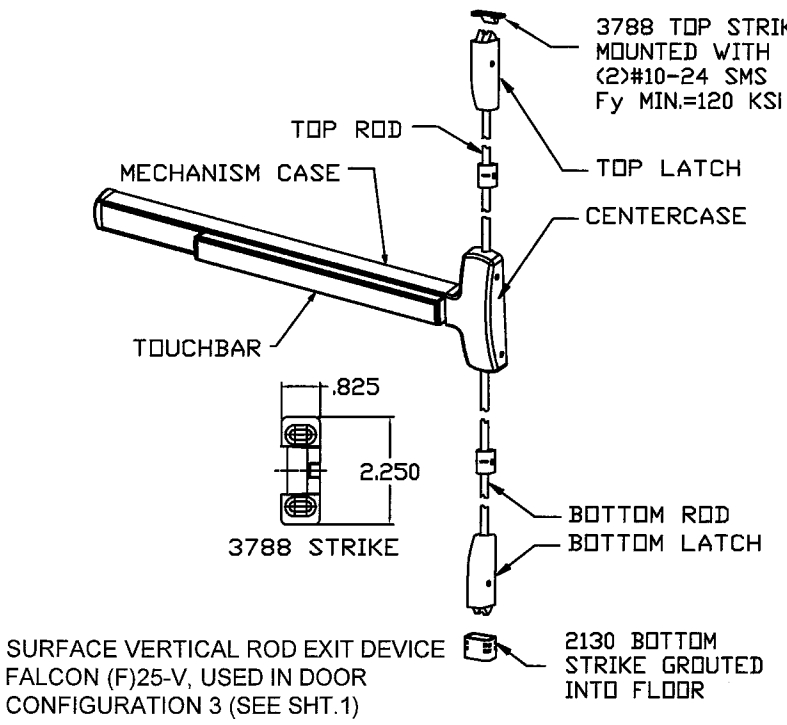
VON DUPRIN 98/9947-F (CONCEALED) VERTICAL ROD
USED IN CONFIGURATIONS: 4

PRODUCT RENEWED
as complying with the Florida
Building Code
Acceptance No. 10-0209-09
Expiration Date MAY 5, 2015
By Ishag L. Chand
Miami Dade Product Control
Division

REVISIONS				
LTR	DESCRIPTION	DATE	APPROVED	
A	APPROVAL DWG	YMF	05/20/07	
B	REVISED DWG	RAP	11/26/07	
C	REVISED DWG	RAP	12/12/07	
D	REVISED DWG	YMF	07/28/08	
E	REVISED PER_MDBCCD	YMF	01/30/09	
F	REVISED PER_MDBCCD	YMF	02/05/09	
G	REVISED DWG	YMF	01/13/10	
H	REVISED DWG	YMF	04/09/10	



VON DUPRIN SERIES 2670 GAURD-X
USED IN CONFIGURATIONS: 10 & 10A

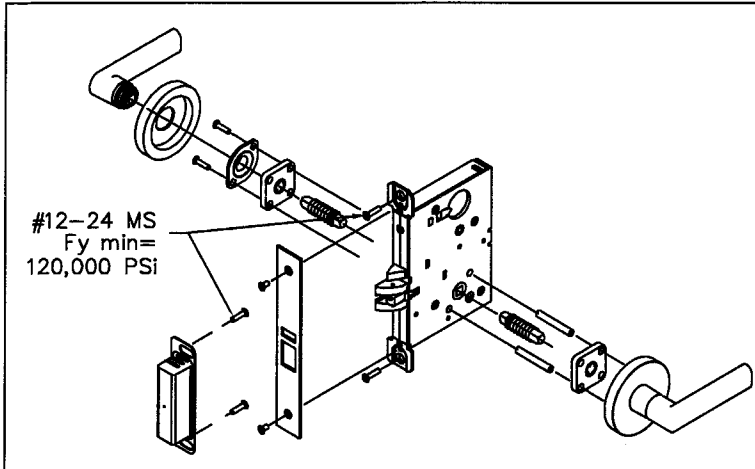


SURFACE VERTICAL ROD EXIT DEVICE
FALCON (F)25-V, USED IN DOOR
CONFIGURATION 3 (SEE SHT.1)

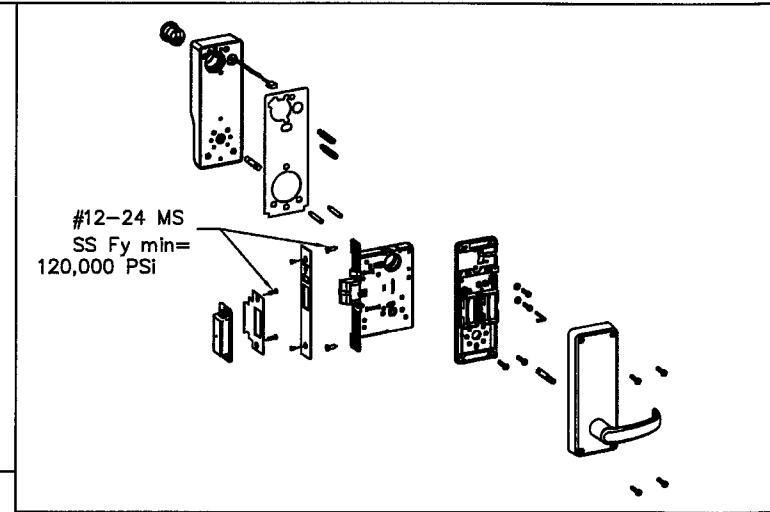
NOTES:
1. ELECTRICAL FUNCTIONS/INSTALLATION IS NOT PART OF THIS APPROVAL, TO BE REVIEWED AND APPROVED BY BUILDING OFFICIAL
2. EXIT HARDWARE OPTIONS:
FOR 98/99 & XP98/99 SERIES - FUNCTIONS E, RX, LX, SS, EL, QEL, CX, F
TRIMS: ALL APPLICABLE TRIMS AVAILABLE.
FOR 88-F SERIES - FUNCTION E
TRIMS: ALL APPLICABLE TRIMS AVAILABLE.
PN MODEL OFFERED.
FOR 33/35-F SERIES - FUNCTIONS RX, LX, EL, QEL, SS
TRIM: ALL APPLICABLE TRIMS AVAILABLE.
FOR 2670 GUARD-X
TRIM: ALL APPLICABLE TRIMS AVAILABLE.
FOR 18-R, F-18-C & 18-V SERIES - FUNCTIONS DL, EA, HWEA, DE, ELR, F, DM, LM, AE, LK, SM
TRIM: ALL APPLICABLE TRIMS AVAILABLE.
F-25-C & (F)25-V SERIES - FUNCTIONS AE, DM, LM, LK, KOR, ED, EL, EA, FSA, FSE, HWEA
TRIMS: ALL APPLICABLE TRIMS AVAILABLE.

APD 14/14/10
Date
Gordon Thomas, P.E.
3759 Blossom Court
Mason, OH 45040
Florida # 46718

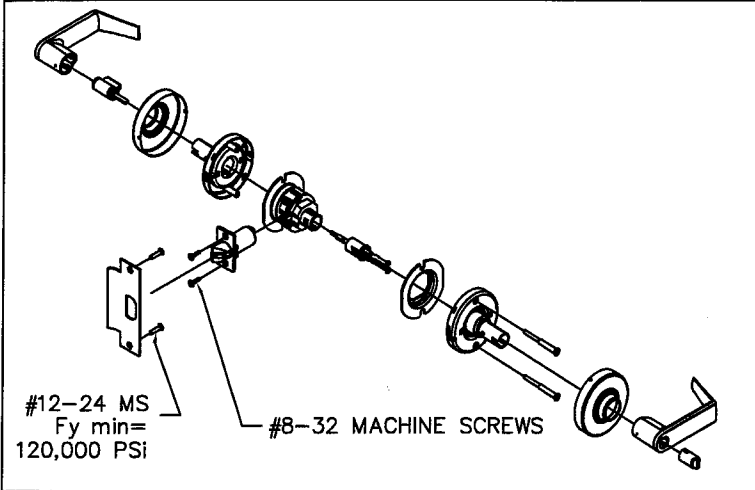
BEND RADIUS		 Ingersoll Rand Security Technologies		TITLE MIAMI-DADE PRODUCT APPROVAL	
THIRD ANGLE PROJECTION				IR HARDWARE OPTIONS FOR GLASS SINGLE DOORS.	
DRAWN	DATE	SIZE	FLAT	DWG NO.	REV
YMF	05/20/07			IRGS07	H
CHECKED		SCALE	NTS	AUTOCAD	SHEET
APPROVED					10 of 13
ENG. APPVL	11/15/07				
JPD					



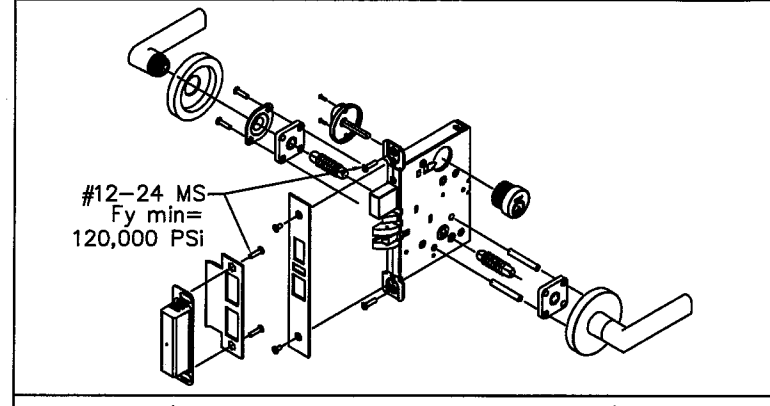
SCHLAGE L/LV 9000 SERIES MORTISE LOCKSET W/O DEADBOLT
3/4" MIN LATCH THROW. USED IN CONFIGURATIONS: 1 & 11



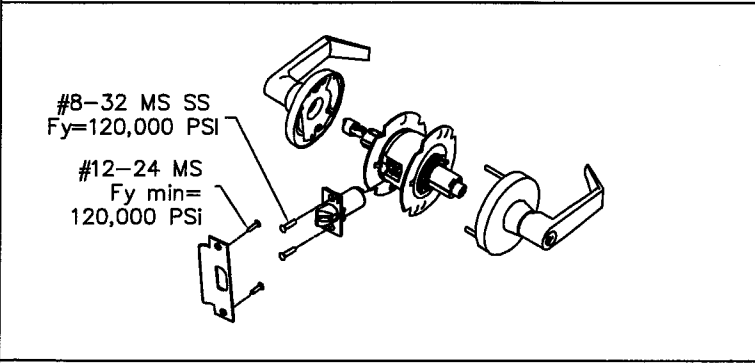
LOCKNETICS/SCHLAGE 5500 SERIES
MORTISE LOCKSET W/ AUTOBOLT (MIN THROW - 3/4")
USED IN CONFIGURATIONS: 1 & 11



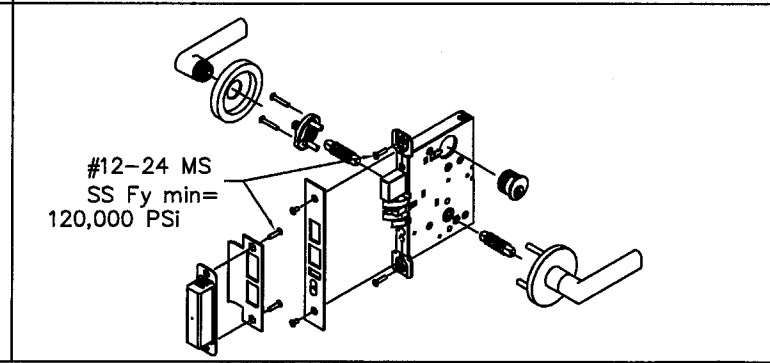
SCHLAGE D/ND-SERIES CYLINDRICAL LEVER LOCKSET
1/2" MIN LATCH THROW. USED IN CONFIGURATIONS: 2 & 12



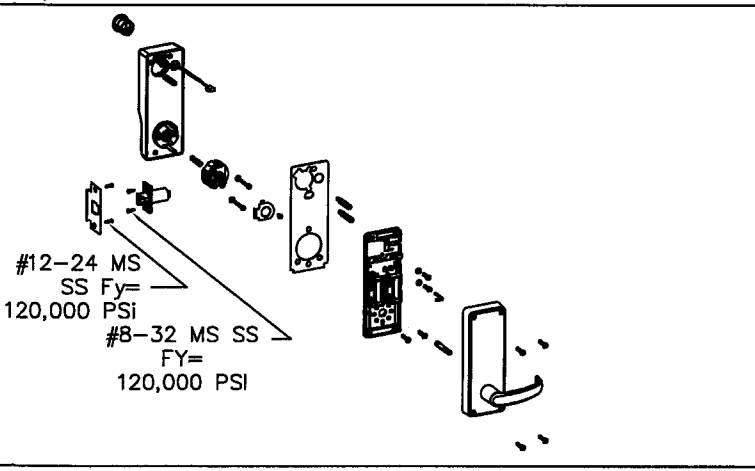
SCHLAGE L/LV 9400 SERIES MORTISE LOCKSET W/ DEADBOLT
LATCH THROW MIN 3/4", BOLT THROW MIN 1"
USED IN CONFIGURATIONS: 1 & 11



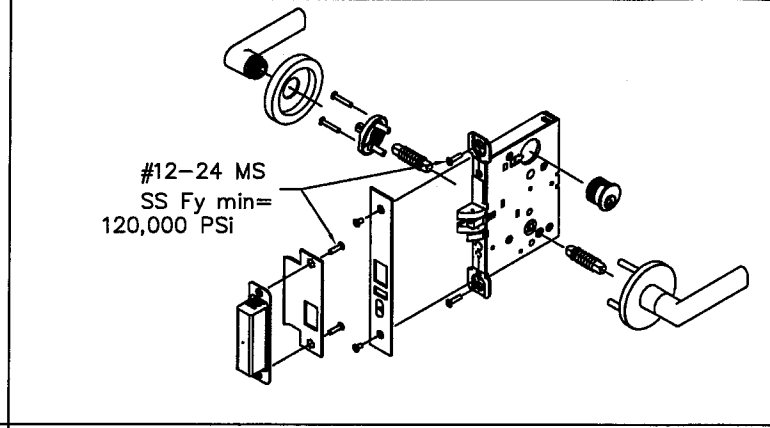
FALCON, T-SERIES CYLINDRICAL LEVER LOCKSET
1/2" MIN LATCH THROW. USED IN CONFIGURATIONS: 2 & 12



FALCON M-SERIES MORTISE LOCKSET W/ DEADBOLT SHOWN
LATCH THROW MIN 3/4", BOLT THROW MIN 1"
USED IN CONFIGURATIONS: 1 & 11



CYLINDRICAL LEVER LOCKSET LOCKNETICS/SCHLAGE 5100 SERIES
1/2" MIN LATCH THROW. USED IN CONFIGURATIONS: 2 & 12



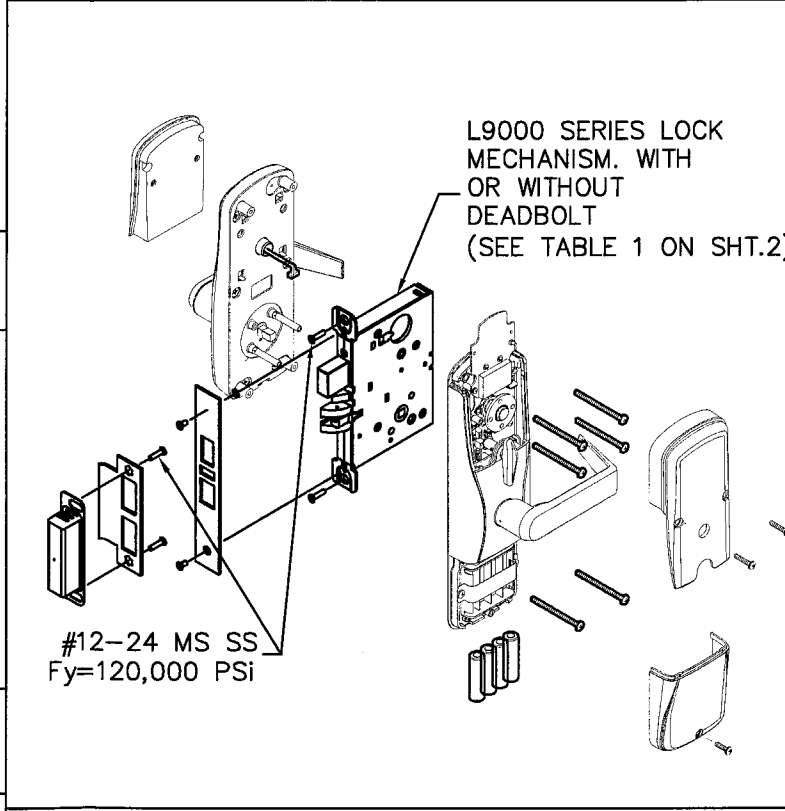
FALCON M-SERIES MORTISE LOCKSET W/O DEADBOLT SHOWN
(MIN THROW - 3/4") USED IN CONFIGURATIONS: 1 & 11

[Signature] 4/14/10
Date
Gordon Thomas, P.E.
3759 Blossom Court
Mason, OH 45040
Florida # 46718

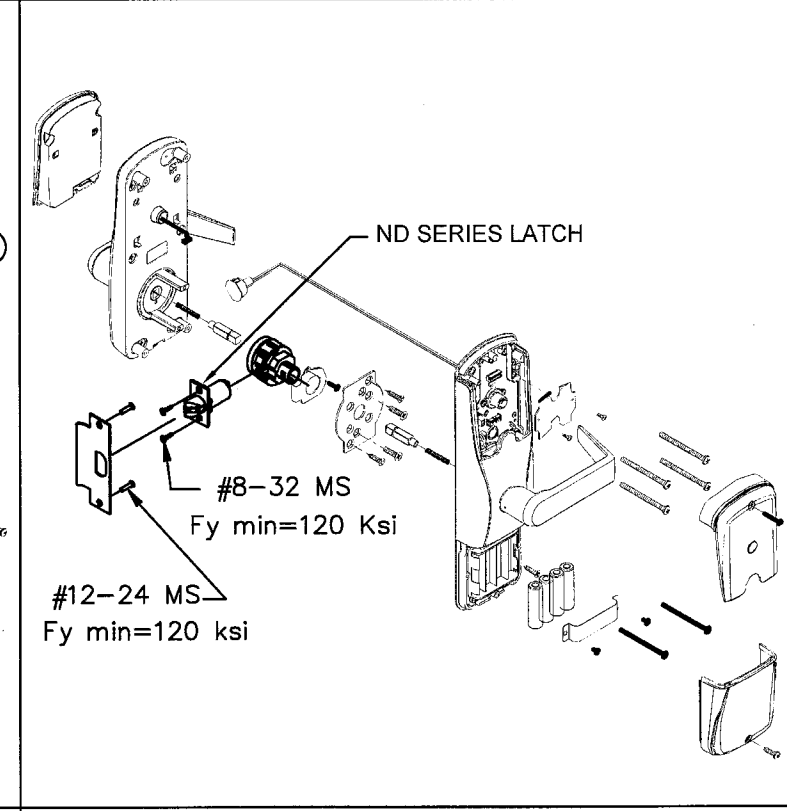
REVISIONS				
LTR	DESCRIPTION	DATE	APPROVED	
A	APPROVAL DWG	YMF 05/20/07		
B	REVISED DWG	RAP 11/26/07		
C	REVISED DWG	RAP 12/12/07		
D	REVISED DWG	YMF 07/28/08		
E	REVISED PER_MDBCCO	YMF 01/30/09		
F	REVISED PER_MDBCCO	YMF 02/05/09		
G	REVISED PER_MFR	YMF 05/18/09		
H	REVISED PER_MDBCCO	YMF 05/18/09		

PRODUCT RENEWED
as complying with the Florida
Building Code
Acceptance No 10-0209-09
Expiration Date MAY 5, 2015
By Ishaq I. Lhanda
Miami Dade Product Control
Division

ELECTRICAL FUNCTIONS/INSTALLATION IS NOT
PART OF THIS APPROVAL, TO BE REVIEWED
AND APPROVED BY BUILDING OFFICIAL



SCHLAGE CO/AD MS SERIES MORTISE LOCKSET
USED IN CONFIGURATIONS: 1 & 11 (SEE SHT. 1)



SCHLAGE CO/AD CY SERIES CYLINDRICAL LOCKSET
USED IN CONFIGURATIONS: 2 & 12 (SEE SHT.1)

BEND RADIUS	
THIRD ANGLE PROJECTION	
DRAWN	DATE
YMF	05/20/07
CHECKED	
APPROVED	
ENG. APPVL	DATE
JPD	11/15/07

IR Ingersoll Rand
Security Technologies

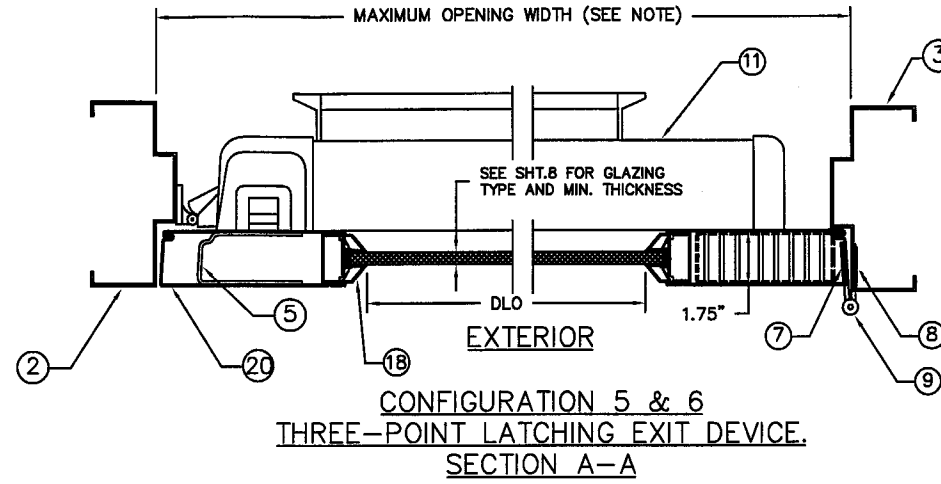
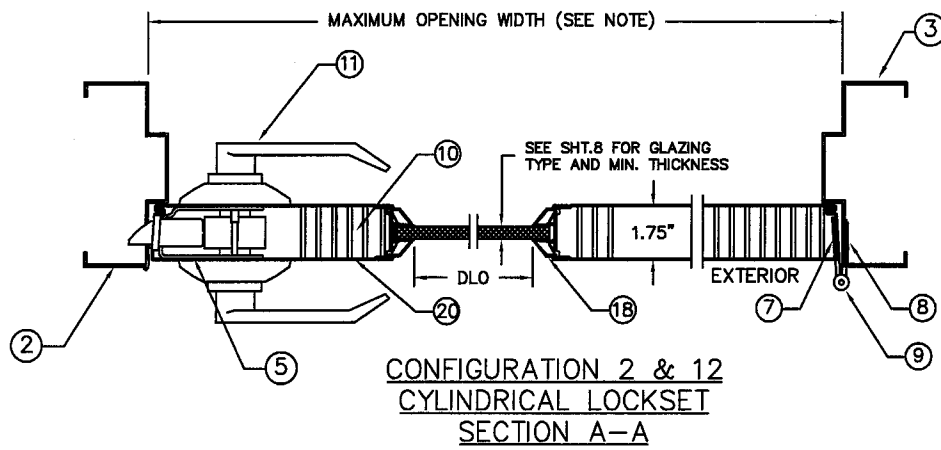
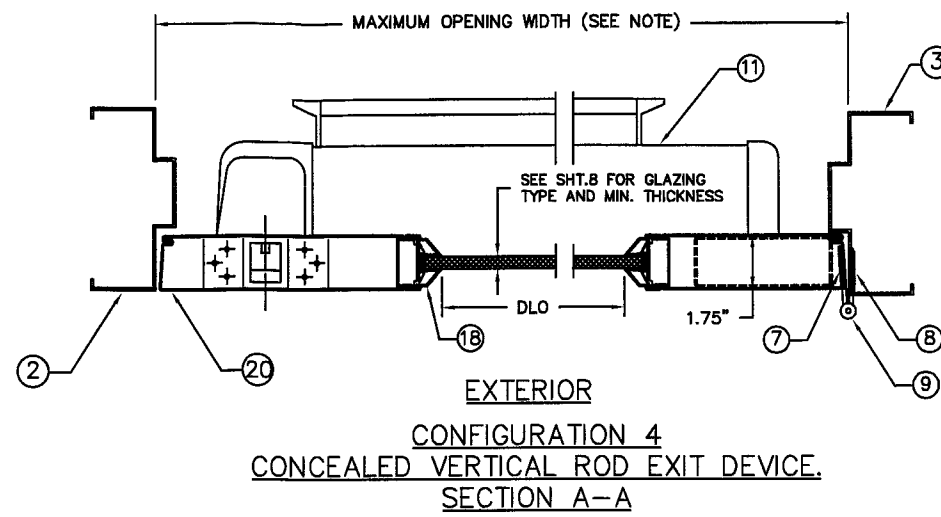
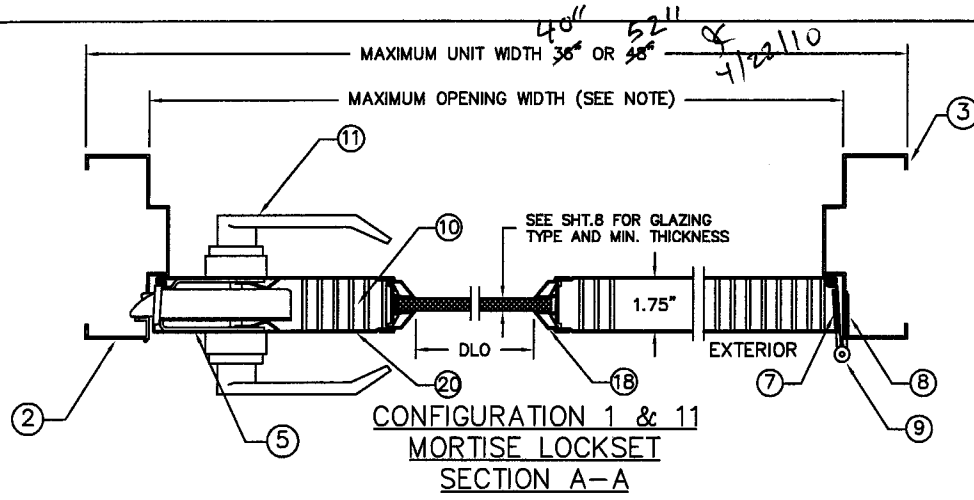
TITLE MIAMI-DADE PRODUCT APPROVAL

IR LOCKSET HARDWARE FOR GLASS SINGLE DOORS

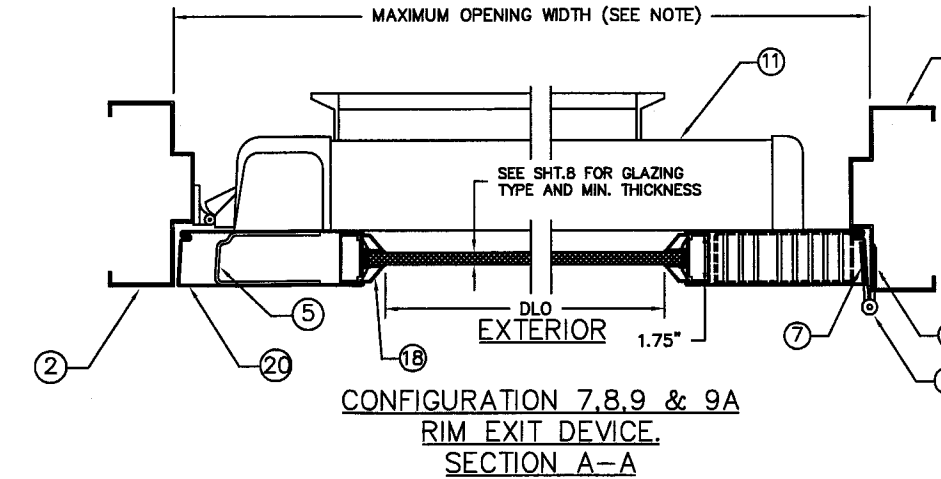
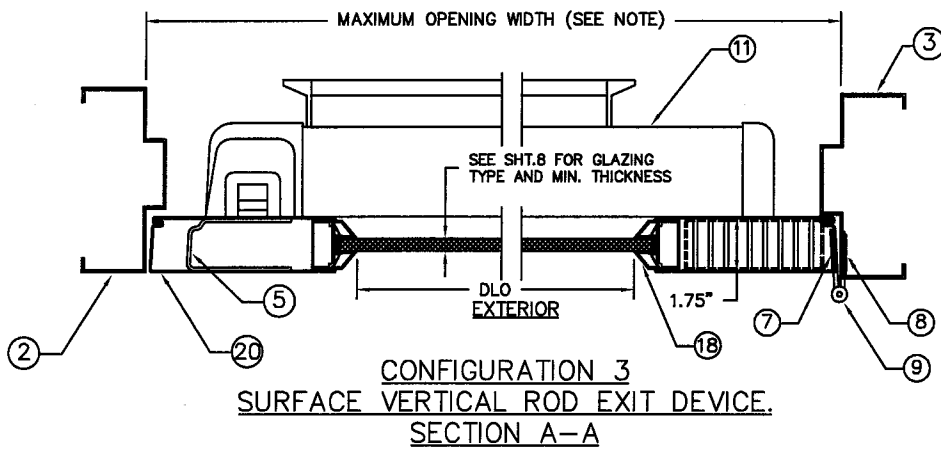
SIZE	FLAT	DWG NO.	REV
		IRGS07	H
SCALE:	NTS	AUTOCAD	SHEET 11 of 13

REVISIONS

LTR	DESCRIPTION	DATE	APPROVED
A	APPROVAL DWG	YMF 05/20/07	
B	REVISED DWG	RAP 11/26/07	
C	REVISED DWG	RAP 12/12/07	
D	REVISED DWG	YMF 07/28/08	
E	REVISED PER_MDBCCO	YMF 01/30/09	
F	REVISED PER_MDBCCO	YMF 02/05/09	
G	REVISED DWG	YMF 01/05/10	
H	REVISED DWG	YMF 04/09/10	



SEE SHEET 4 FOR ANCHOR INSTALLATION DETAILS

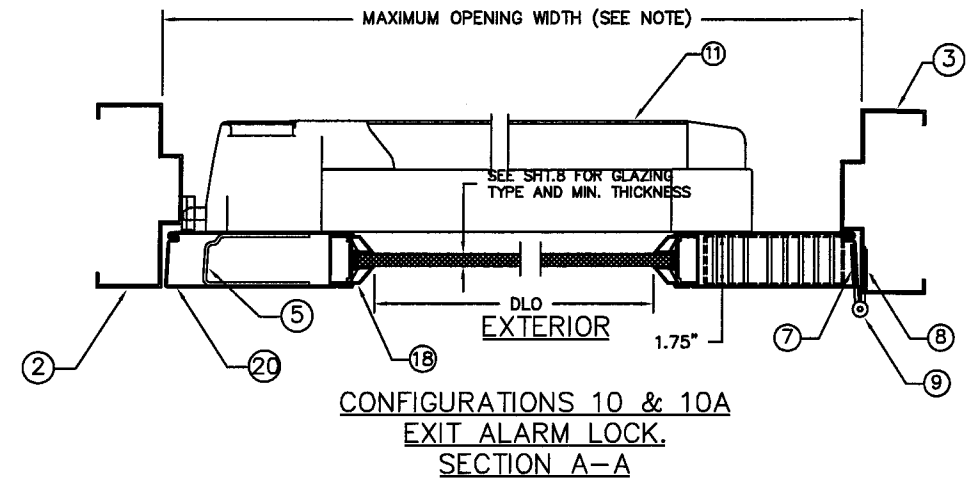



PRODUCT RENEWED
 as complying with the Florida Building Code
 Acceptance No 10-0209.09
 Expiration Date MAY 5, 2015
 By J. Chong L. Chaudhary
 Miami Dade Product Control Division

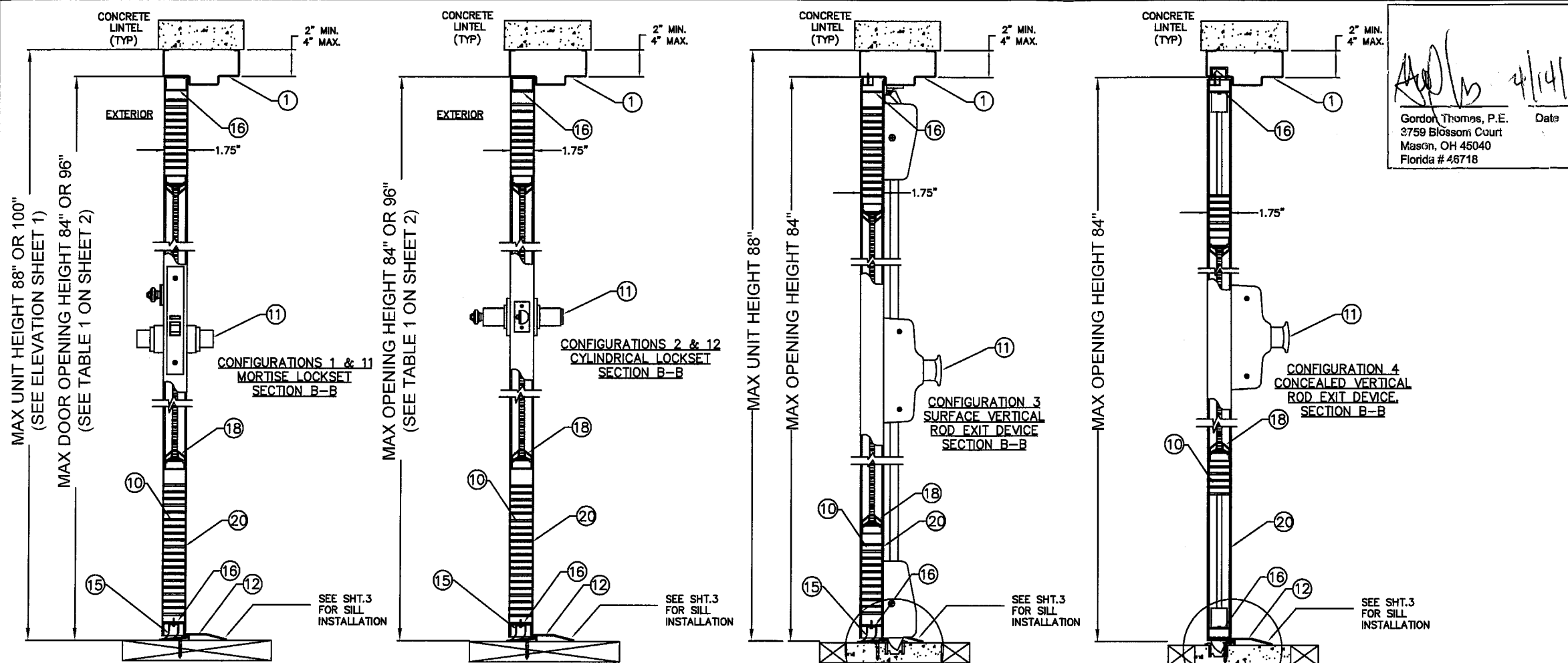
NOTES:

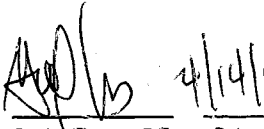
1. FOR MAXIMUM DOOR OPENING AND GLASS OPENING (DLO) SIZE SEE TABLE 1 ON SHEET 2 OF 13.
2. GLAZING DETAIL K SHOWN, SEE TABLE 8 SHEET 8 OF 13 FOR ADDITIONAL OPTIONS.

[Signature]
 Gordon Thomas, P.E. Date
 3759 Blossom Court
 Mason, OH 45040
 Florida # 46718

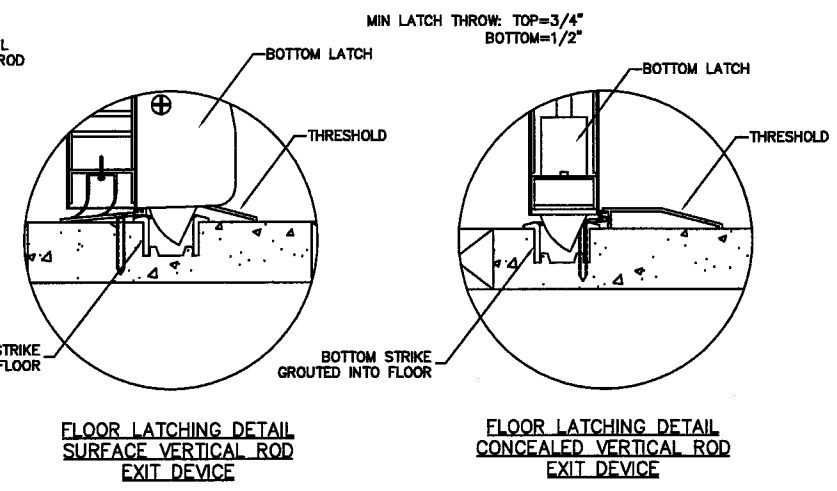
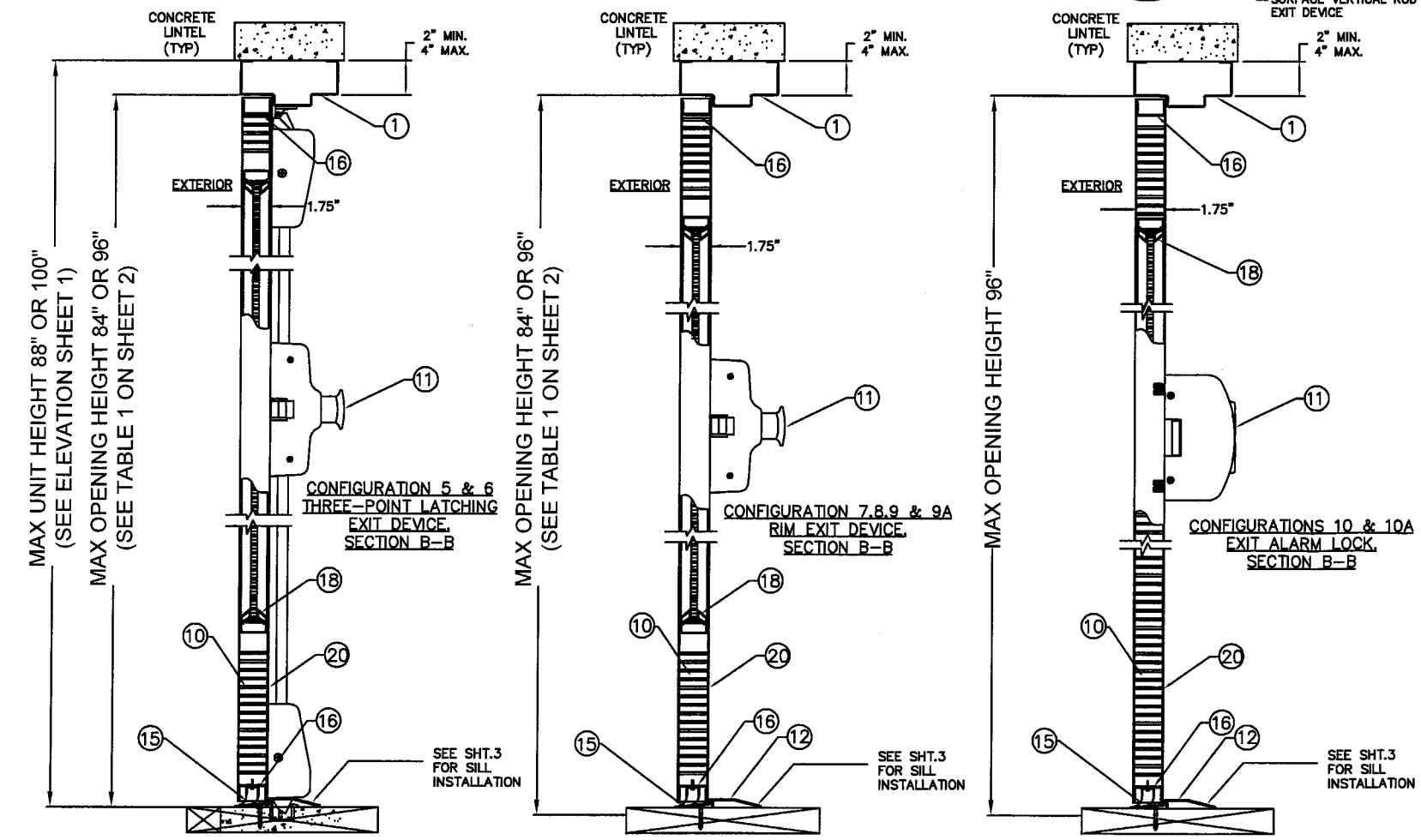


BEND RADIUS		 Ingersoll Rand Security Technologies	
THIRD ANGLE PROJECTION			
DRAWN	DATE	TITLE MIAMI-DADE PRODUCT APPROVAL	
YMF	05/20/07	HORIZONTAL CROSS SECTIONS FOR GLASS SINGLE DOORS.	
CHECKED		SIZE	FLAT
APPROVED		DWG NO.	IRGS07
ENG. APPVL	11/15/07	SCALE:	NTS AUTOCAD
JPD		SHEET	12 of 13




 4/14/10
 Date
 Gordon Thomas, P.E.
 3759 Blossom Court
 Mason, OH 45040
 Florida # 48718

REVISIONS				
LTR	DESCRIPTION	DATE	APPROVED	
A	APPROVAL DWG	YMF	05/20/07	
B	REVISED DWG	RAP	11/26/07	
C	REVISED DWG	RAP	12/12/07	
D	REVISED DWG	YMF	07/28/08	
E	REVISED PER_MDBCCO	YMF	01/30/09	
F	REVISED PER_MDBCCO	YMF	02/05/09	
G	REVISED DWG	YMF	01/05/10	
H	REVISED DWG	YMF	04/09/10	



- NOTES:
1. FOR MAXIMUM OPENING SIZE SEE ELEVATION SHEET 1 AND TABLE 1 ON SHEET 2 OF 13.
 2. GLAZING DETAIL K SHOWN, SEE TABLE 8 SHEET 8 OF 13 FOR ADDITIONAL OPTIONS.
 3. SEE SHEET 4 FOR ANCHORS INSTALLATION DETAILS.

BEND RADIUS		 Ingersoll Rand Security Technologies		
THIRD ANGLE PROJECTION				
DRAWN	DATE	VERTICAL CROSS SECTIONS FOR GLASS SINGLE DOORS.		
YMF	05/20/07	SIZE	FLAT	DWG NO.
CHECKED				IRGS07
APPROVED		SCALE:	AUTOCAD	REV H
ENG. APPVL	11/15/07	NTS		SHEET 13 of 13
JPD				

PRODUCT RENEWED
 as complying with the Florida
 Building Code
 Acceptance No. 10-0209.09
 Expiration Date MAY 5, 2015
 By Ishaal Chande
 Miami Dade Product Control
 Division