



MIAMI-DADE COUNTY
BUILDING CODE COMPLIANCE OFFICE (BCCO)
PRODUCT CONTROL DIVISION

MIAMI-DADE COUNTY, FLORIDA
METRO-DADE FLAGLER BUILDING
140 WEST FLAGLER STREET, SUITE 1603
MIAMI, FLORIDA 33130-1563
 (305) 375-2901 FAX (305) 372-6339

NOTICE OF ACCEPTANCE (NOA)

www.maimidade.gov/buildingcode

Ingersoll-Rand
6810 Hillsdale Court
Indianapolis, IN 46250

SCOPE:

This NOA is being issued under the applicable rules and regulations governing the use of construction materials. The documentation submitted has been reviewed by Miami-Dade County Product Control Division and accepted by the Board of Rules and Appeals (BORA) to be used in Miami Dade County and other areas where allowed by the Authority Having Jurisdiction (AHJ).

This NOA shall not be valid after the expiration date stated below. The Miami-Dade County Product Control Division (In Miami Dade County) and/or the AHJ (in areas other than Miami Dade County) reserve the right to have this product or material tested for quality assurance purposes. If this product or material fails to perform in the accepted manner, the manufacturer will incur the expense of such testing and the AHJ may immediately revoke, modify, or suspend the use of such product or material within their jurisdiction. BORA reserves the right to revoke this acceptance, if it is determined by Miami-Dade County Product Control Division that this product or material fails to meet the requirements of the applicable building code. This product is approved as described herein, and has been designed to comply with the Florida Building Code, including the High Velocity Hurricane Zone.

DESCRIPTION: Series Steelcraft "H16 – 4 FL 8080" Outswing Full Louvered Commercial Steel Doors (Thermal efficiency of this product is not part of this approval) – L.M.I.

APPROVAL DOCUMENT: Drawing No. **882W-2**, dated 08/12/02, with revision E dated 10/13/03, titled "Dade County H16 – 4 FL 8080 Double Doors (Outswing) with Full Louver IR Commercial Lock Hardware", Sheets 1 through 7 of 7, prepared by manufacturer, signed and sealed by Gordon Thomas, P.E., bearing the Miami-Dade County Product Control Revision stamp with the Notice of Acceptance number and expiration date by the Miami-Dade County Product Control Division.

MISSILE IMPACT RATING: Large and Small Missile Impact Resistant

LABELING: Each unit shall bear a permanent label with the manufacturer's name or logo, city, state and following statement: "Miami-Dade County Product Control Approved", unless otherwise noted herein.

RENEWAL of this NOA shall be considered after a renewal application has been filed and there has been no change in the applicable building code negatively affecting the performance of this product.

TERMINATION of this NOA will occur after the expiration date or if there has been a revision or change in the materials, use, and/or manufacture of the product or process. Misuse of this NOA as an endorsement of any product, for sales, advertising or any other purposes shall automatically terminate this NOA. Failure to comply with any section of this NOA shall be cause for termination and removal of NOA.

ADVERTISEMENT: The NOA number preceded by the words Miami-Dade County, Florida, and followed by the expiration date may be displayed in advertising literature. If any portion of the NOA is displayed, then it shall be done in its entirety.

INSPECTION: A copy of this entire NOA shall be provided to the user by the manufacturer or its distributors and shall be available for inspection at the job site at the request of the Building Official.

This NOA **renews NOA # 03-0327.02** and consists of this page 1 and evidence pages E-1 and E-2, as well as approval document mentioned above.

The submitted documentation was reviewed by **Manuel Perez, P.E.**



NOA No. 08-0908.20
Expiration Date: November 13, 2013
Approval Date: January 1, 2009
 Page 1

Ingersoll-Rand

NOTICE OF ACCEPTANCE: EVIDENCE SUBMITTED

A. DRAWINGS

1. Manufacturer's die drawings and sections.
2. Drawing No **882W-2**, titled "Dade County H16 – 4 FL 8080 Double Doors (Outswing) with Full Louver IR Commercial Lock Hardware", sheets 1 through 7 of 7, dated 08/12/02, with revision E dated 10/13/03, prepared by manufacturer, signed and sealed by Gordon Thomas, P.E.

B. TESTS

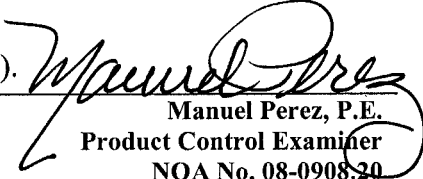
1. Test reports on:
 - 1) Air Infiltration Test, per FBC, TAS 202-94
 - 2) Uniform Static Air Pressure Test, Loading per FBC TAS 202-94
 - 3) Large Missile Impact Test per FBC, TAS 201-94
 - 4) Cyclic Wind Pressure Loading per FBC, TAS 203-94
 - 5) Forced Entry Test, per FBC 3603.2 (b) and TAS 202-94along with marked-up drawings and installation diagram of a louvered commercial steel door system w/*Air Louver, Inc.-1500A* steel louver, *National Guard Products L-VRS-2 Air Louver* steel louver blades, and *Anemostat PLSL* fixed blades louver insert, all prepared by Certified Testing Laboratories, Test Report No. **CTLA-882W-2**, dated August 29, 2002, signed and sealed by Ramesh Patel, P.E. *(Submitted under previous NOA #03-0327.02)*
2. Test reports on:
 - 1) Air Infiltration Test, per FBC, TAS 202-94
 - 2) Uniform Static Air Pressure Test, Loading per FBC TAS 202-94
 - 3) Large Missile Impact Test per FBC, TAS 201-94
 - 4) Cyclic Wind Pressure Loading per FBC, TAS 203-94
 - 5) Forced Entry Test, per FBC 3603.2 (b) and TAS 202-94along with marked-up drawings and installation diagram of a louvered commercial steel door system w/*Anemostat FLDL-UL-SGI* fusible link louver insert and *Anemostat PLSL* fixed blades louver insert, prepared by Certified Testing Laboratories, Test Report No. **CTLA-1107W-2**, dated September 5, 2003, signed and sealed by Ramesh Patel, P.E. *(Submitted under previous NOA #03-0327.02)*

C. CALCULATIONS

1. Anchor verification calculations and structural analysis, complying with FBC-2004, Project #02-0524, Report # 058, dated June 19, 2002 and revised on November 21, 2002, prepared by Product Technology Corporation, signed and sealed by Rene J. Quiroga, P.E.,
2. Evaluation Report #S05-014R2, dated June 7, 2006, signed and sealed by Gordon Thomas, P.E.

D. QUALITY ASSURANCE

1. Miami Dade Building Code Compliance Office (BCCO).


Manuel Perez, P.E.
Product Control Examiner
NOA No. 08-0908-20
Expiration Date: November 13, 2013
Approval Date: January 1, 2009

Ingersoll-Rand

NOTICE OF ACCEPTANCE: EVIDENCE SUBMITTED

E. MATERIAL CERTIFICATIONS

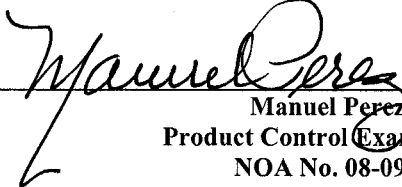
1. None.

F. STATEMENTS

1. Statement letter of conformance and no financial interest, dated August 23, 2008, signed and sealed by Gordon Thomas, P.E.

G. OTHER

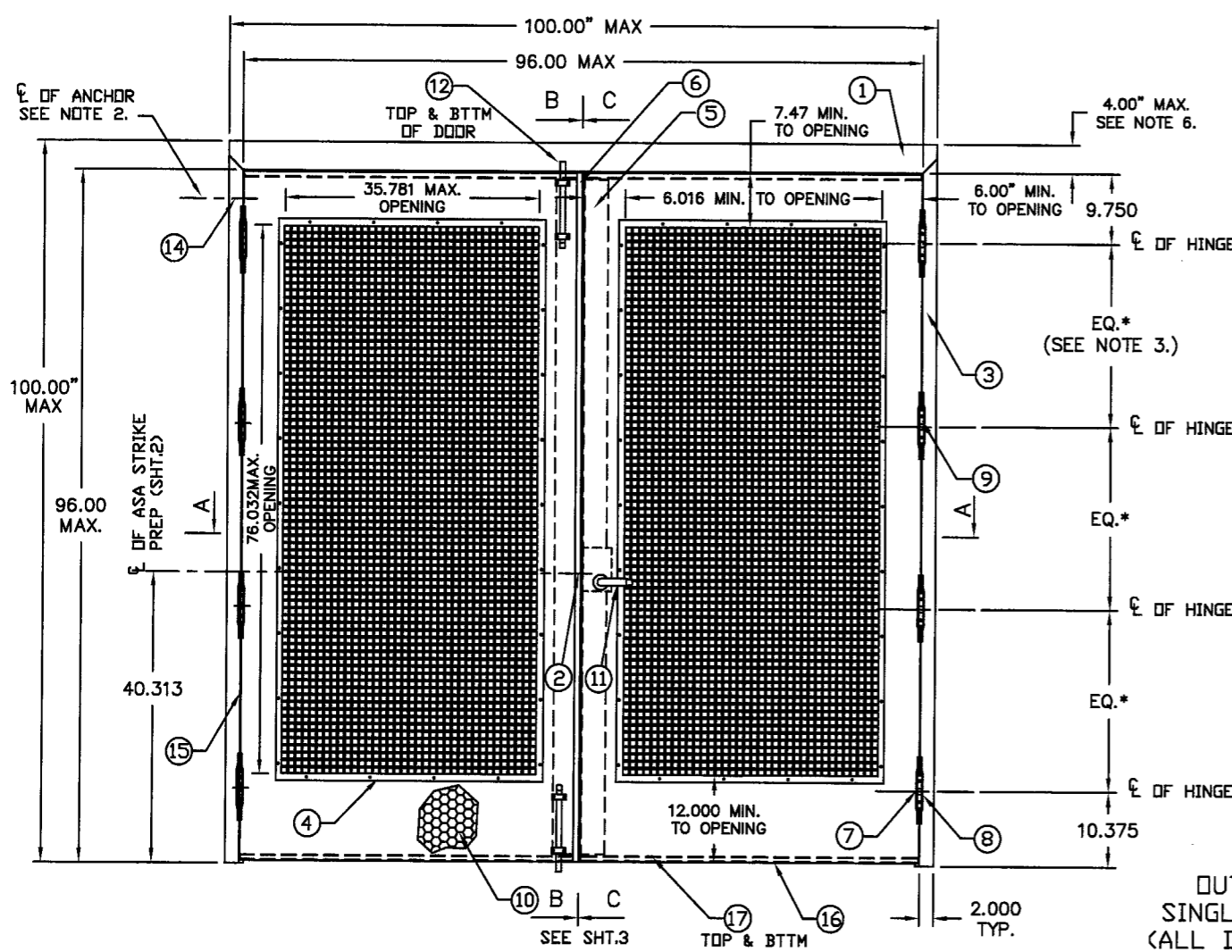
1. Notice of Acceptance No. **03-0327.02**, issued to **Ingersoll-Rand** for their **Series "Steelcraft H16-4FL 8080" Commercial Steel Door**, approved on 11/13/03 and expiring on 11/13/08.



Manuel Perez, P.E.
Product Control Examiner
NOA No. 08-0908.20

Expiration Date: November 13, 2013

Approval Date: January 1, 2009



DESIGN PRESSURE RATING		
	WHERE WATER INFILTRATION REQUIREMENT IS NEEDED	WHERE WATER INFILTRATION REQUIREMENT IS NOT NEEDED
POSITIVE	NOT APPROVED	+ 60 PSF
NEGATIVE	NOT APPROVED	- 60 PSF

REVISIONS			
LTR	DESCRIPTION	DATE	APPROVED
A	APPROVAL DWG	02/26/03	
B	ADDED UL-RATED LOUVER	05/16/03	
C	MODIFIED PER DC BCCO	09/23/03	
D	MODIFIED PER DC BCCO	10/07/03	
E	MODIFIED PER DC BCCO	10/13/03	

NOTES:

- TWO ROWS OF PS074 WEATHERSTRIPPING PER JAMB AND HEAD. INSTALL PER SHT.6
- ANCHOR REQUIREMENTS: SEE SHT 5 FOR APPROVED ANCHORS AND INSTALLATION.
- HINGE REQUIREMENTS: FOR DOOR OPENING UP TO 7'6" HIGH - MIN (3) HINGES FOR DOOR OPENING 7'7" - 8'0" HIGH - MIN (4) HINGES LOCATIONS: 9.75" FROM RABBIT IN HEAD TO CL OF TOP HINGE- 10.38" FROM FLOOR TO CL OF BOTTOM HINGE, EQUALLY SPACED BETWEEN.
- SEE SHEET 4 FOR AVAILABLE STANDARD OPENING SIZES AND SPECIFICATIONS.
- APPROVED HARDWARE AND LOUVERS INSTALLATION AS PER MANUFACTURER'S INSTRUCTIONS.
- 4" FACE HEAD IS AVAILABLE WHEN FRAME IS GROUTED WITH CONCRETE.
- APPLY CAULK AS NEEDED.

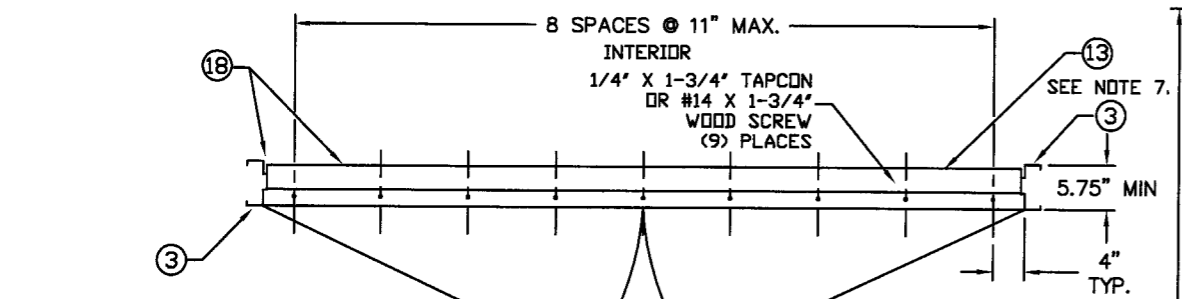
PRODUCT RENEWED as complying with the Florida Building Code Acceptance No. 08-0508-20 Expiration Date: Nov. 13, 2013 By: *Marcus* Miami Made Product Control Division

Handwritten signature and date: 12/11/08 FL 46718

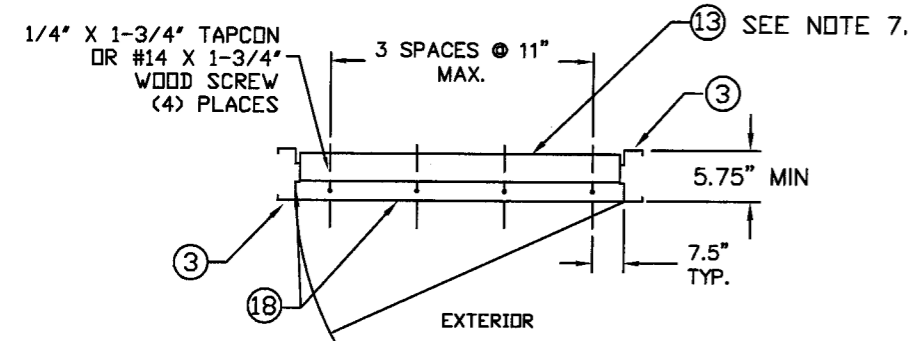
ITEM	QUANTITY	DESCRIPTION	MATERIAL	SIZE
1	1	HEAD SEE SHT 6 ASTM A366	.053" MIN. STL	MAX. 100"
2	1	ASA STRIKE		
3	2	HINGE OR LOCK JAMB SEE SHT 6 ASTM A366	.053" MIN. STL	MAX. 100"
4	1	FIXED DOOR LOUVER:	SEE SHT 7	3'1-5/8" X 6'5-7/8" MAX.
		1) NATIONAL GUARD PRODUCTS - L-VRSG-2		
		2) AIR LOUVERS, INC. - 1500-A		
		3) ANEMOSTAT - PLSL		
4	1	FUSIBLE LINK (FIRE RATED) DOOR LOUVER:	SEE SHT 7	24" X 24" MAX.
		4) ANEMOSTAT - FLDL-UL-SG1 OR SG2		
5	2	LOCK SIDE REINFORCEMENT CHANNEL	.099" MIN. STL	3.5" X 93.44" MAX.
6	1	Z-ASTRAGAL	.067" MIN. STL	MAX. 95.5"
7	NOTE 3.	HINGE REINFORCEMENT DOOR ASTM A621	.171" MIN. STL	1.28" X 9.19"
8	NOTE 3.	HINGE REINFORCEMENT FRAME ASTM A621	.171" MIN. STL	1.5" X 9.187" MAX.
9	NOTE 3.	STANLEY FBB179/1900 OR HAGER BB1279 HINGES	X .134	4.50" X 4.50 (12-24 MS 4 SCREWS PER HINGE LEAF)
10	1	CORE MATERIAL - KRAFT PAPER HONEYCOMB	SEE SHEET 4	1" CELL SIZE
11	1	LOCKING HARDWARE - LOCKSET		
		1) SCHLAGE 9000 SERIES MORTISE LOCK		
		2) FALCON LM-SERIES MORTISE LOCK (W/O D/BOLT)		
		3) SCHLAGE D-SERIES CYLINDRICAL LOCK		
12	2	IVES 360 12" SURFACE BOLT		
		THRESHOLD SILL W/BUMPER GASKET		
13	1	1) NATL GUARD 950A	.100" ALUM. 6063 T5	5.5" X 0.5" X 96" MAX.
		2) PEMCO 2005AS		
		3) ZERO 566A		
		4) DURABLE LT206HV		
14	NOTE 2.	JAMB ANCHOR ASTM A924	SEE SHT 5	
15	6	PS074 WEATHER STRIPPING	TPE	MAX. 24'
16	2	FAS-SEAL DOOR SWEEP	TPE	MAX. 47.66"
17	4	END CHANNEL ASTM A924	.070" MIN. STL	.69" X 1.66" X 47.66" MAX.
18	AS NEEDED	1) BUTYL RUBBER OR 100% SILICONE		
		2) SCHLAGE B600/700/800 Series Deadlock		
19	1	1) SCHLAGE B600/700/800 Series Deadlock		
		2) FALCON D400/800 Series Deadlock		SINGLE DOOR APPLICATION ONLY

OUTSWING DOORS (INTERIOR VIEW)

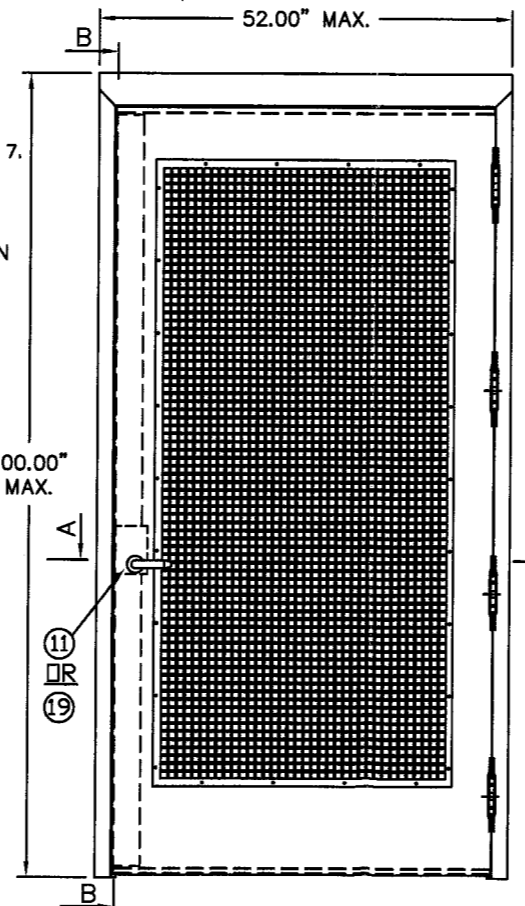
OUTSWING DOOR SINGLE DOOR OPTION (ALL DIMENSIONS TYP.)



DOUBLE DOOR SILL INSTALLATION (TYPICAL)



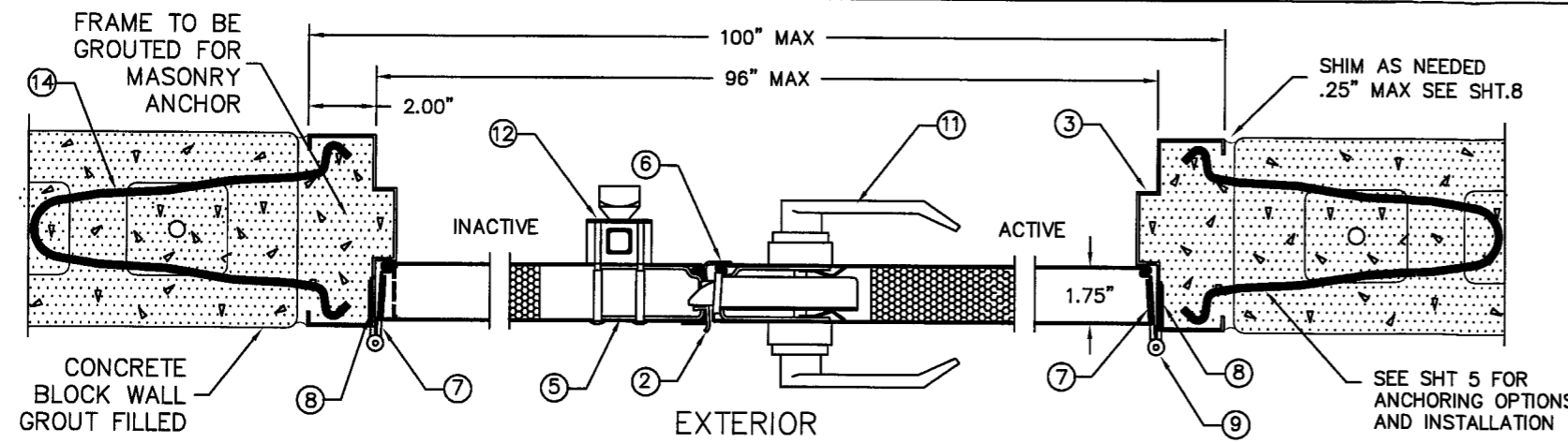
SINGLE DOOR SILL INSTALLATION (TYPICAL)



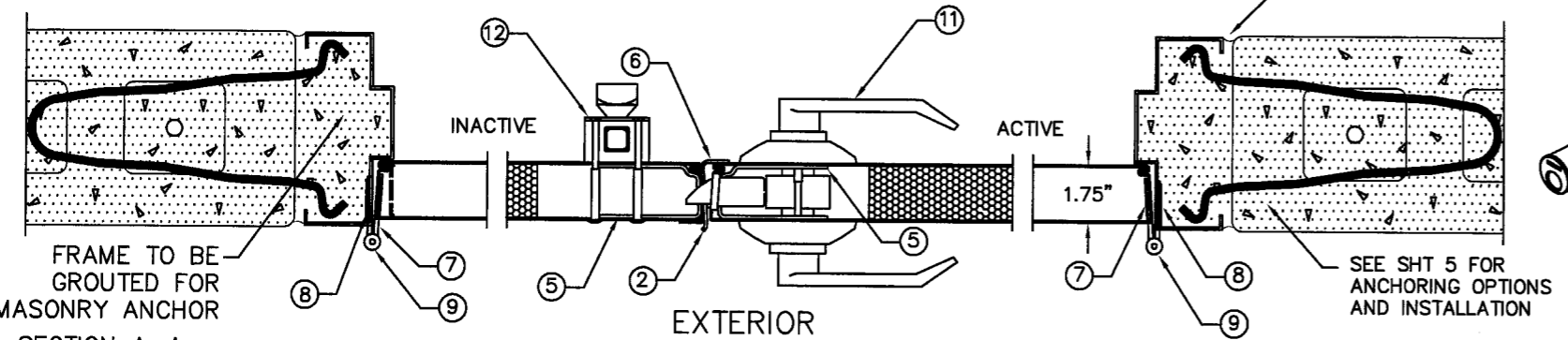
BEND RADIUS				INGERSOLL-RAND COMPANY STEELCRAFT MFG. 9017 BlueAsh Rd. Cincinnati Ohio 45242	
THIRD ANGLE PROJECTION				TITLE DADE COUNTY	
DRAWN YMF	DATE 08/12/02	DADE COUNTY		H16 - 4 FL 8080 DOUBLE DOORS (OUTSWING)	
CHECKED		WITH FULL LOUVER		IR COMMERCIAL LOCK HARDWARE	
APPROVED		SIZE FLAT	DWG NO.	882W-2	
ENG. APPVL		SCALE: NTS	AUTOCAD	REV E	
			SHEET 1 OF 7		

REVISIONS

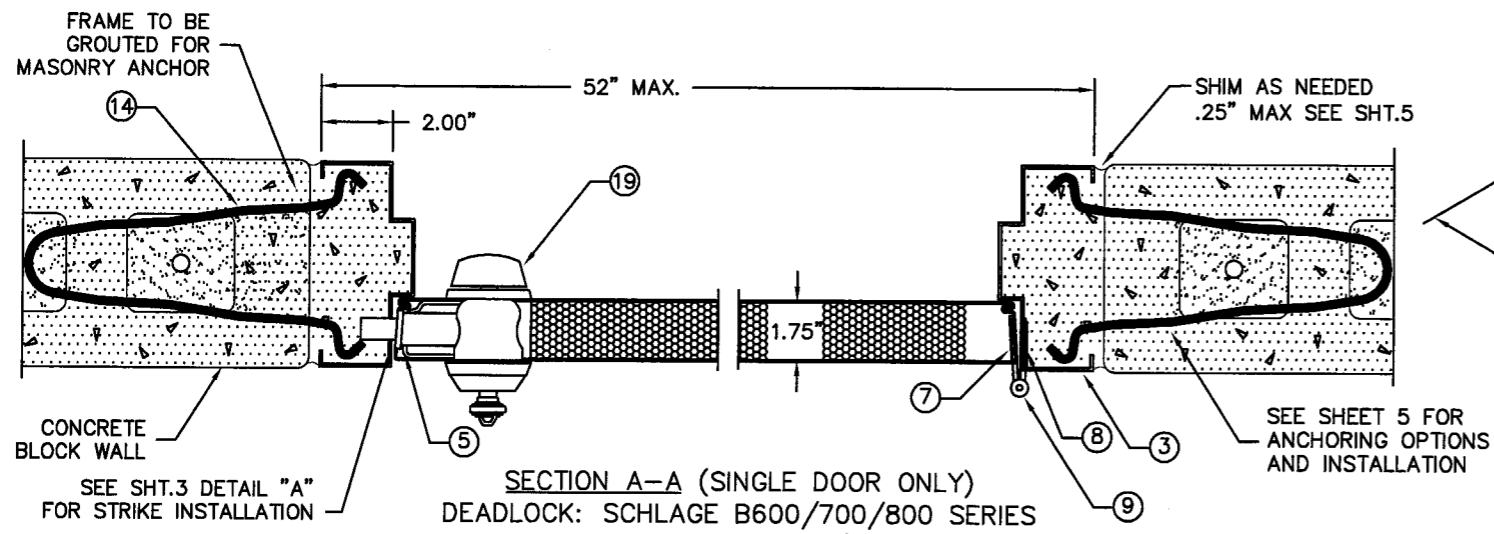
LTR	DESCRIPTION	DATE	APPROVED
A	APPROVAL DWG	02/26/03	
B	MODIFIED PER DC BCCO	09/23/03	
C	MODIFIED PER DC BCCO	10/08/03	
D	MODIFIED PER DC BCCO	10/13/03	



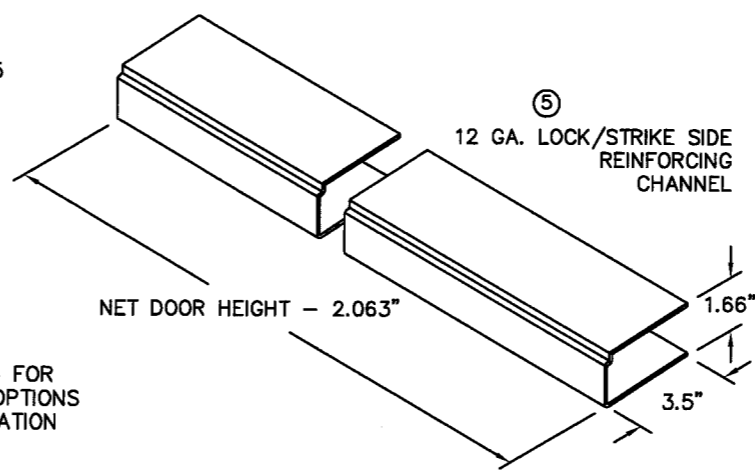
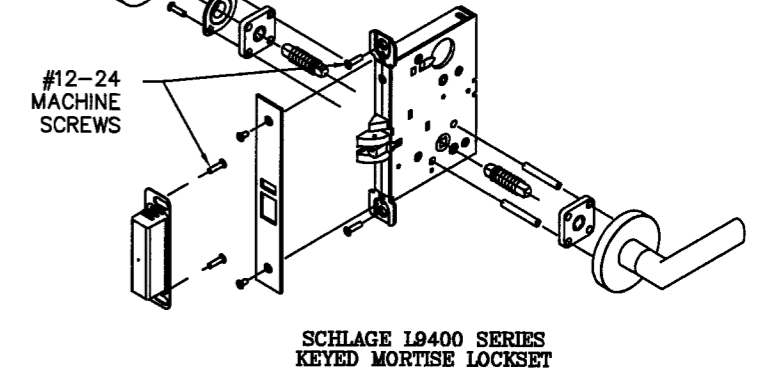
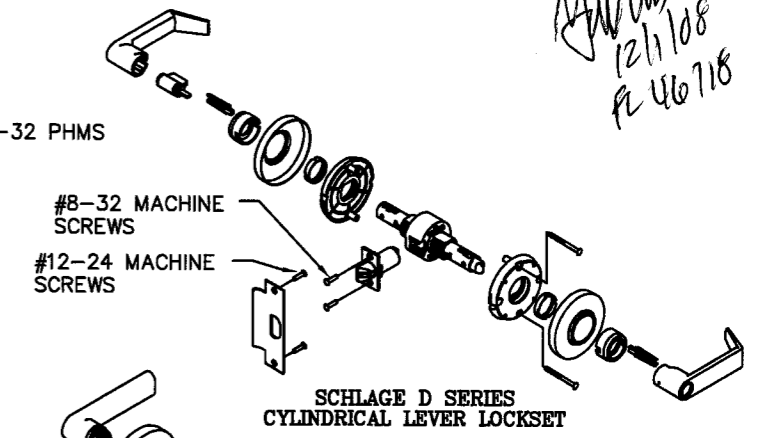
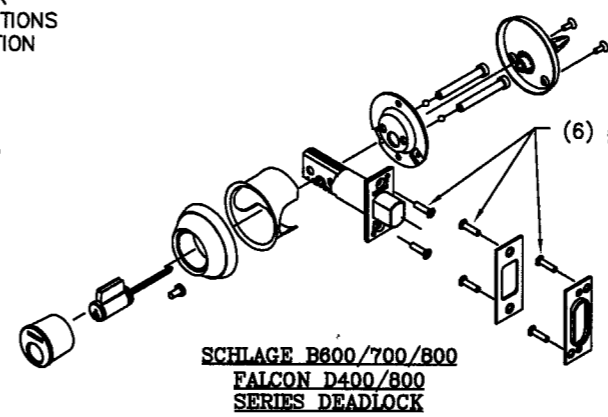
SECTION A-A
MORTISE LOCKSET: SCHLAGE L9000 SERIES
FALCON LM-SERIES WITHOUT DEADBOLT



SECTION A-A
CYLINDRICAL LOCKSET:
SCHLAGE D - SERIES
FALCON T - SERIES
ALL CYL. LOCKS WITH 3/4" THROW LATCH

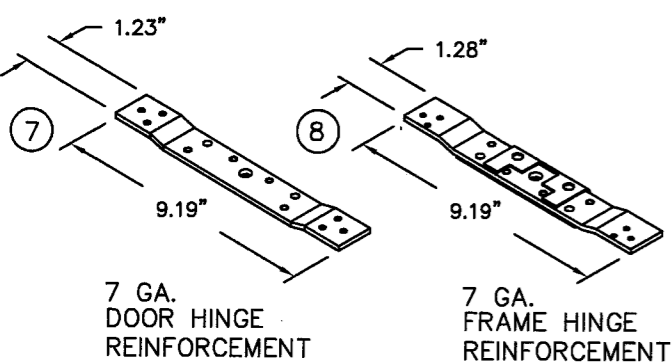


SECTION A-A (SINGLE DOOR ONLY)
DEADLOCK: SCHLAGE B600/700/800 SERIES
FALCON D400/800 SERIES



NOTES:

1. SEE SHT.1 FOR ELEVATION, MATERIAL AND SIZE
2. SEE SHT.1 NOTE 2. AND SHT.5 FOR ANCHOR REQUIREMENTS
3. SEE SHT.5 FOR WALL CONSTRUCTION AND ANCHORING SYSTEM OPTIONS AND INSTALLATION
4. SEE SHT.4 FOR AVAILABLE OPENING SIZES, JAMB DEPTHS AND SPECIFICATIONS
5. APPROVED HARDWARE AND LOUVER INSTALLATION AS PER MANUFACTURER'S INSTRUCTIONS

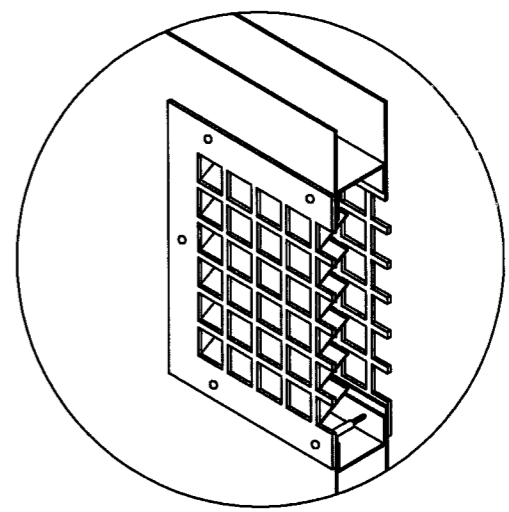
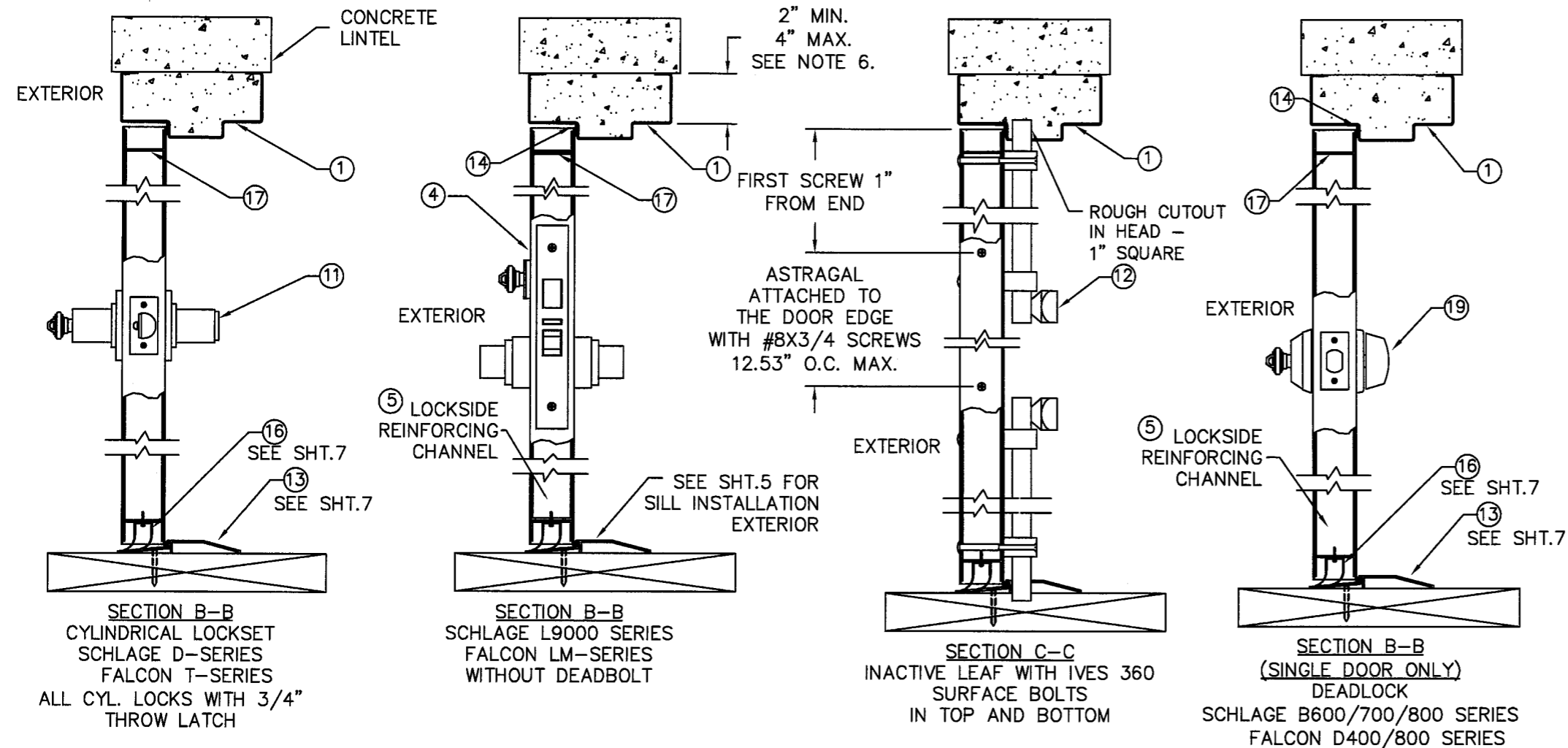


PRODUCT RENEWED
as complying with the Florida
Building Code
Acceptance No. 08-0908/20
Expiration Date Nov. 13, 2013
By Manuel Perez
Miami-Dade Product Control
Division

BEND RADIUS				INGERSOLL-RAND COMPANY STEELCRAFT MFG. 9017 BlueAsh Rd. Cincinnati Ohio 45242	
THIRD ANGLE PROJECTION				TITLE DADE COUNTY	
DRAWN YMF	DATE 08/12/02	CROSS SECTION OF DOOR AND FRAME IR COMMERCIAL LOCK HARDWARE H16 4 FL 8080 FULL LOUVER DOUBLE DOORS			
CHECKED		SIZE	FLAT	DWG NO.	REV
APPROVED				882W-2	D
ENG. APPVL		SCALE:	NTS	AUTOCAD	SHEET 2 OF 7

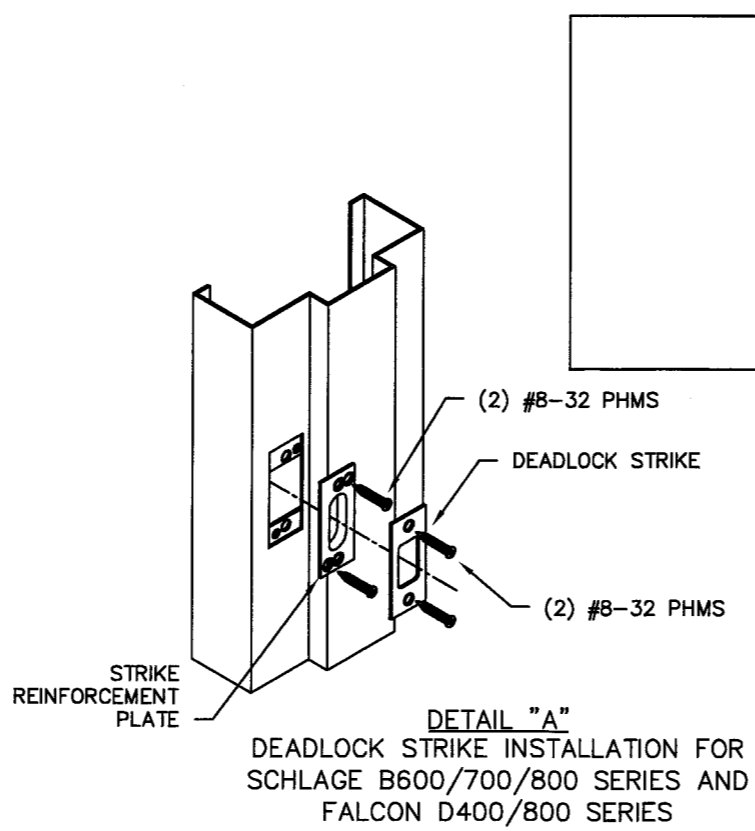
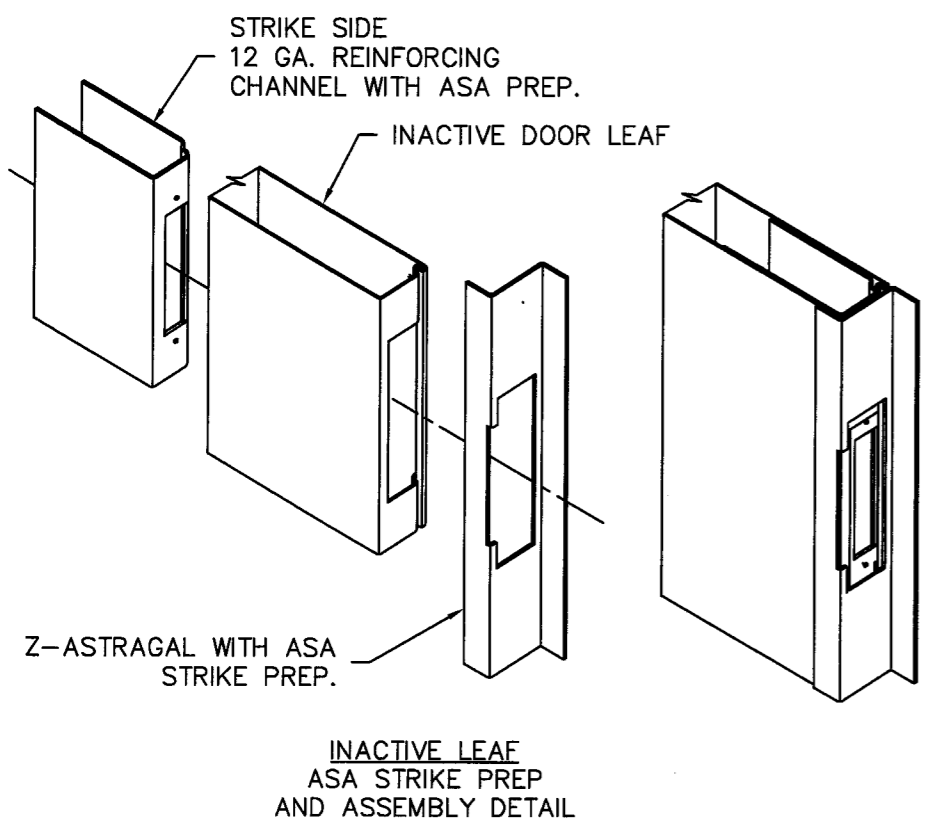
REVISIONS

LTR	DESCRIPTION	DATE	APPROVED
A	APPROVAL DWG	02/26/03	
B	MODIFIED PER DC BCCO	09/23/03	
C	MODIFIED PER DC BCCO	10/08/03	



Handwritten signature and date:
12/1/08
FL 46710

SECURITY LOUVER DETAIL
LOUVERS: NATIONAL GUARD L-VRSG-2
AIR LOUVERS 1500-A
ANEMOSTAT PLSL OR FLDL-UL-SG1 OR SG2



PRODUCT RENEWED
as complying with the Florida
Building Code
Acceptance By *DB-0908-20*
Expiration Date *NOV. 13, 2013*
By *Manuel Perez*
Miami Code Product Control
Division

NOTES:

1. SEE SHT.1 FOR ELEVATION, MATERIAL AND SIZE
2. SEE SHT.1 NOTE 2. FOR ANCHOR REQUIREMENTS
3. SEE SHT. 5 FOR WALL CONSTRUCTION AND ANCHORING SYSTEM
4. SEE SHT. 4 FOR AVAILABLE OPENING SIZES, JAMB DEPTHS AND SPECIFICATIONS
5. HARDWARE INSTALLATION IS PER MANUFACTURER'S INSTRUCTIONS
6. HEAD SECTION CAN HAVE 4" FACE DIMENSION WHEN IT'S GROUTED WITH CONCRETE
7. WALL CONSTRUCTION STRUCTURAL MEMBERS MUST BE DESIGNED TO COMPLY WITH APPROVED DESIGN PRESSURE RATING.

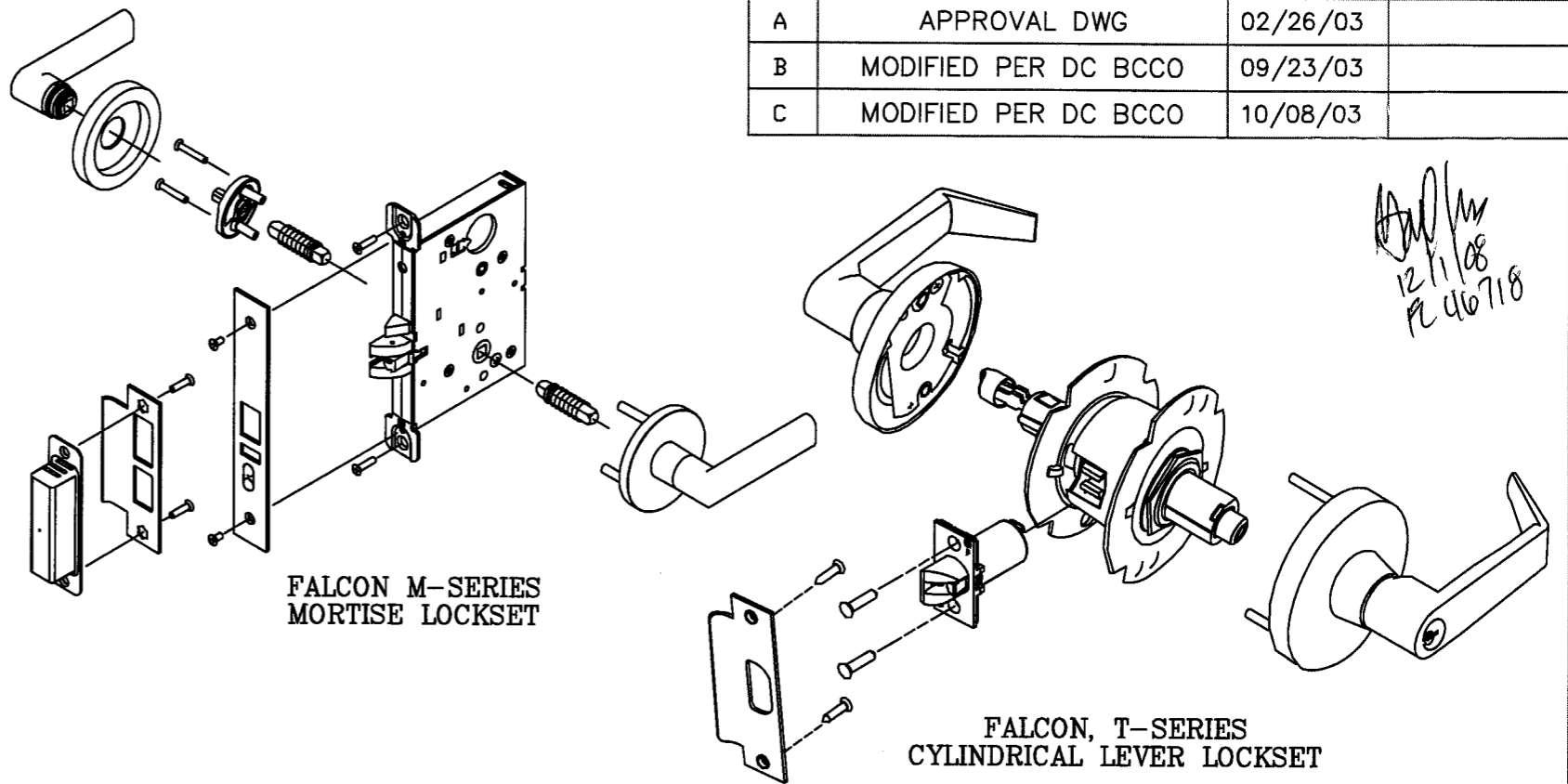
BEND RADIUS				INGERSOLL-RAND COMPANY STEELCRAFT MFG. 9017 BlueAsh Rd. Cincinnati Ohio 45242	
THIRD ANGLE PROJECTION					
DRAWN YMF	DATE 08/12/02	TITLE DADE COUNTY CROSS SECTION OF DOOR AND FRAME IR COMMERCIAL LOCK HARDWARE H16 4 FL 8080 FULL LOUVER DOUBLE DOORS		SIZE FLAT	DWG NO. 882W-2
CHECKED				SCALE: NTS	AUTOCAD
APPROVED					REV C
ENG. APPVL					SHT 3 OF 7

AVAILABLE DOOR CONFIGURATIONS
(SEE NOTE 1.)

TABLE 1.

CORE MATERIAL PER SHT.7	MAXIMUM OPENING SIZE		SKIN MATERIAL	
	WIDTH	HEIGHT	DESCR.	GA./MIN. THK
HONEYCOMB POLYSTYRENE POLYURETHANE	8'0"	8'0"	CRS GALV	16/.053" 14/.067"
HONEYCOMB POLYSTYRENE POLYURETHANE	8'0"	8'0"	STAINLESS STEEL	16/.053"

MINIMUM YIELD STRENGTH = 27,000 PSI



AVAILABLE FRAME CONFIGURATIONS
(SEE NOTE 2.)

TABLE 2.

FRAME SERIES	JAMB DEPTH	MAXIMUM OPENING SIZE		MATERIAL	
		WIDTH	HEIGHT	DESCR.	GA./MIN. THK
F	5.75" MIN.	8'0"	8'0"	CRS/HRS GALV	16/.053" 14/.067" 12/.099"
				STAINLESS STEEL	16/.053"
MU	5.75" MIN.	8'0"	8'0"	CRS/HRS GALV	16/.053" 14/.067"

MINIMUM YIELD STRENGTH = 27,000 PSI

TABLE 3.

CRS ASTM A1008
HRS ASTM A1011
GALV: A60 ASTM A924
STL: 304,306 ASTM A240

NOTES:

- DOOR CONSTRUCTION
 - MINIMUM DOOR THICKNESS - 1 3/4"
 - LOUVER OPENING SIZE TESTED (SEE SHEET 1) IS MAX SIZE AVAILABLE FOR 8'0" X 8'0" OPENING. ALL SMALLER SIZES ARE ACCEPTABLE.
 - MAXIMUM LOUVER OPENING SIZE WILL CHANGE IN PROPORTION WITH DOOR SIZE, KEEPING THE SAME STILE AND RAIL MINIMUM DIMENSIONS SPECIFIED IN ELEVATION ON SHEET 1 OF 7.
- FRAME CONSTRUCTION
 - MINIMUM JAMB DEPTH - 5 3/4", STOP HEIGHT - 5/8"
 - FRAMES AVAILABLE AS FLUSH (F-SERIES) AND MULT-USE (MU-SERIES) (SEE TABLE.2)
- FOR MATERIAL SPECIFICATIONS REFERENCE SEE TABLE 3.

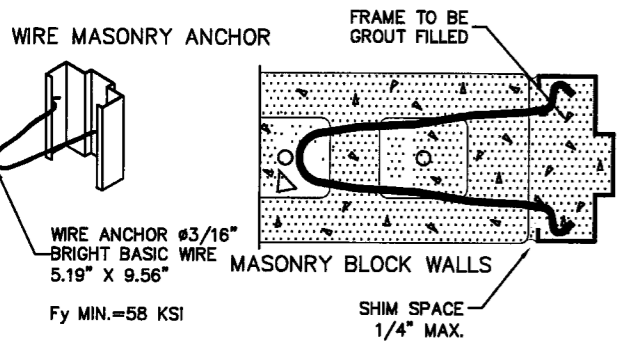
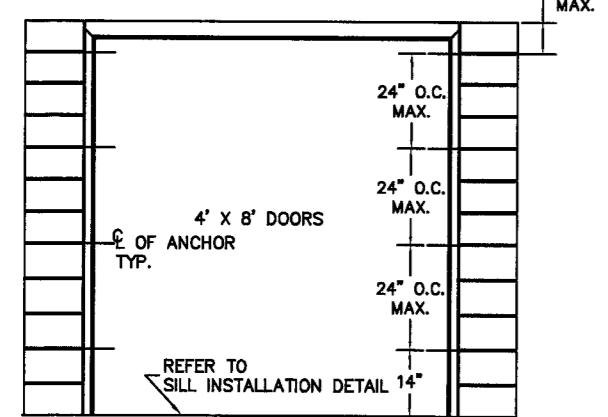
PRODUCT REVIEWED
as complying with the Florida
Building Code
Approved by
Manuel Perez
08-0908-20
Nov. 13, 2013

BEND RADIUS				INGERSOLL-RAND COMPANY STEELCRAFT MFG 9017 BlueAsh Rd. Cincinnati Ohio 45242	
THIRD ANGLE PROJECTION					
DRAWN YMF	DATE 08/08/02	TITLE DADE COUNTY DOOR AND FRAME CONFIGURATIONS AND MATERIAL SPECS.			
CHECKED		SIZE	FLAT	DWG NO. 882W-2	REV C
APPROVED		SCALE: NTS		AUTOCAD	SHT 4 OF 7
ENG. APPVL					

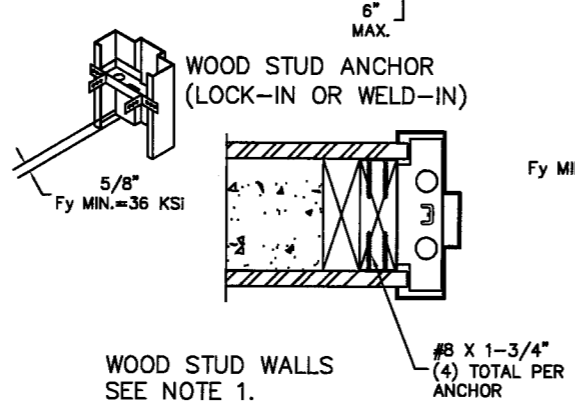
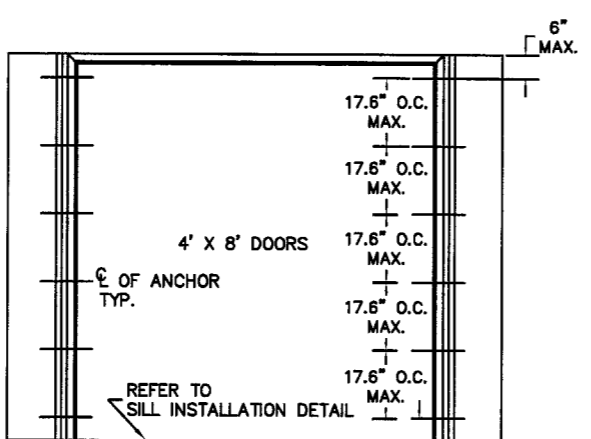
REVISIONS

LTR	DESCRIPTION	DATE	APPROVED
A	APPROVAL DWG	02/26/03	

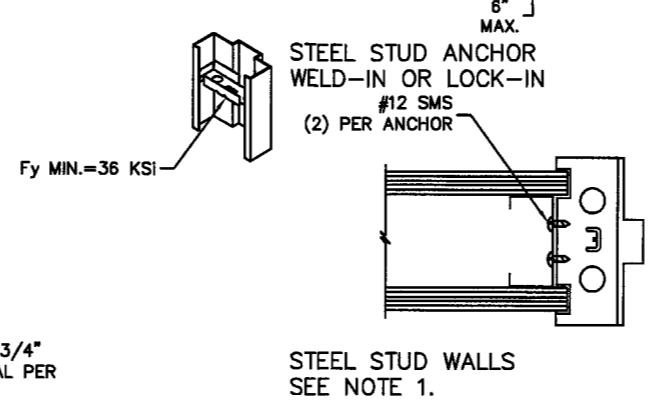
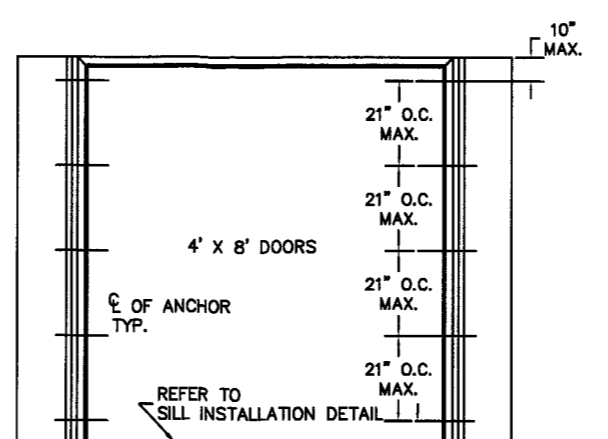
A WIRE MASONRY ANCHOR INTO GROUT FILLED FRAME AND BLOCK WALL



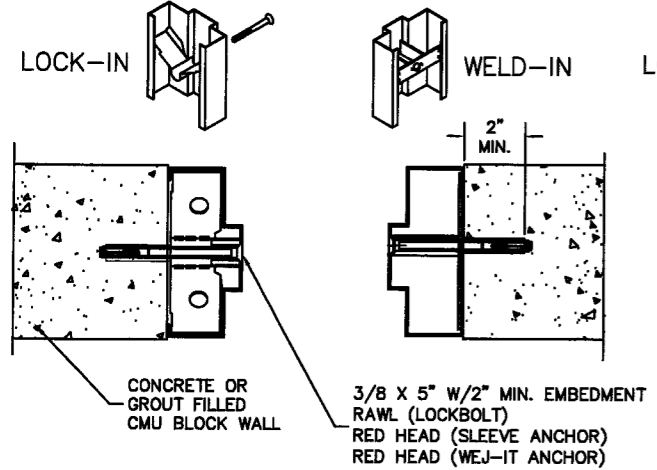
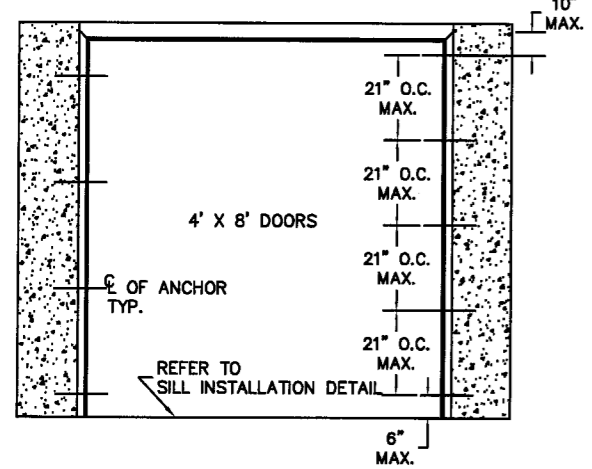
B WOOD STUD ANCHOR



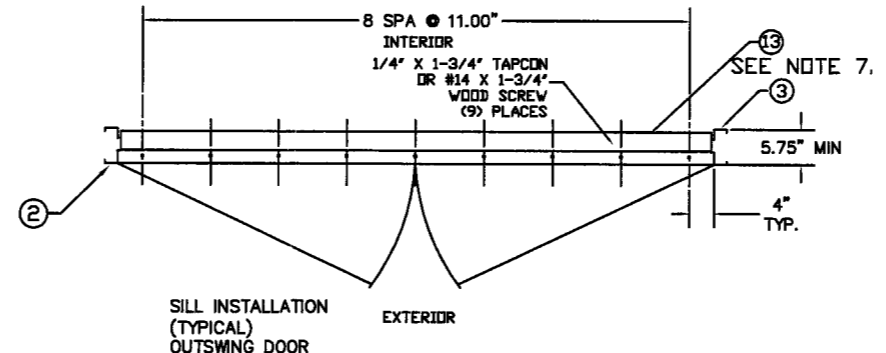
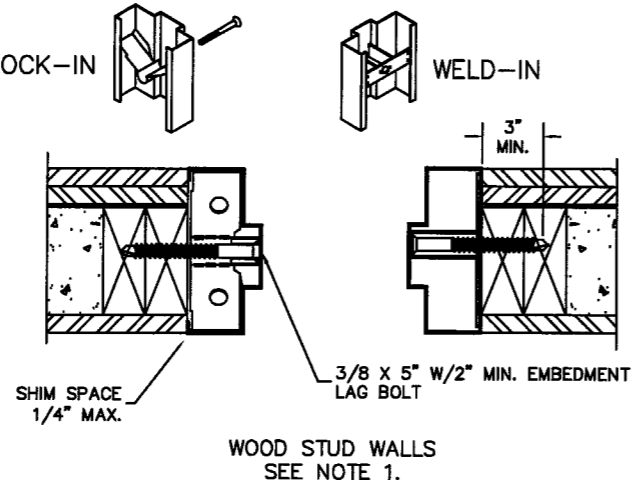
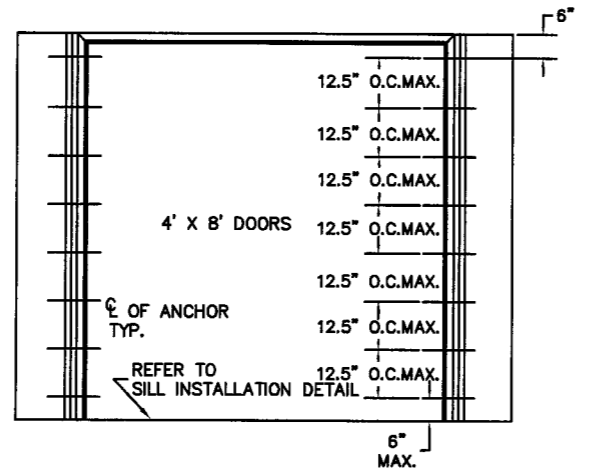
C STEEL STUD ANCHOR



D EXISTING MASONRY ANCHOR (EMA) INTO CONCRETE WALL OR CMU



E EXISTING MASONRY ANCHOR (EMA) WITH LAG BOLT INTO WOOD STUD WALL



- NOTES:
- WOOD OR STEEL STRUCTURAL MEMBERS OF WOOD AND STEEL-STUD WALLS MUST BE DESIGNED TO CARRY AT LEAST 320 #/ft. LOAD, AND SHOULD BE VERIFIED BY THE APPROPRIATE OFFICIAL.
 - NUMBER OF ANCHORS FOR VARIOUS OPENING HEIGHTS IS LIMITED BY MAXIMUM DISTANCE BETWEEN ANCHORS, SHOWN ON THIS SHEET.
 - APPLY CAULK AS NEEDED

PRODUCT RENEWED
 at *concrete* with the Florida
 Building Code
 Approved by
 08-0908-20
 NOV 13, 2013
Manuel Perry

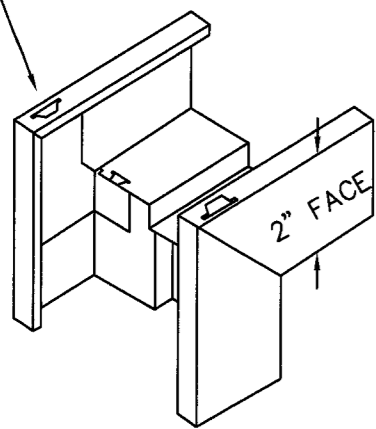
BEND RADIUS			
THIRD ANGLE PROJECTION			
DRAWN YMF	DATE 08/12/02	TITLE DADE COUNTY ANCHOR DETAILS/MOUNTING CONDITIONS	
CHECKED		SIZE FLAT	DWG NO. 882W-2
APPROVED		SCALE NTS	REV A
ENG. APPVL		SHT 5 OF 7	

Handwritten signature and date:
 12/1/08
 PC 46718

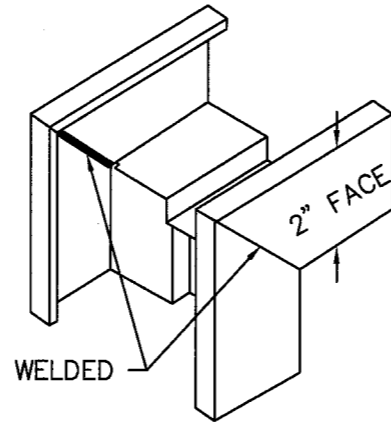
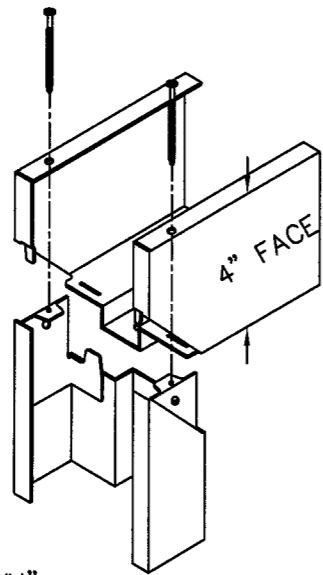
REVISIONS

LTR	DESCRIPTION	DATE	APPROVED
A	APPROVAL DWG	02/26/03	
B	MODIFIED PER DC BCCO	09/23/03	

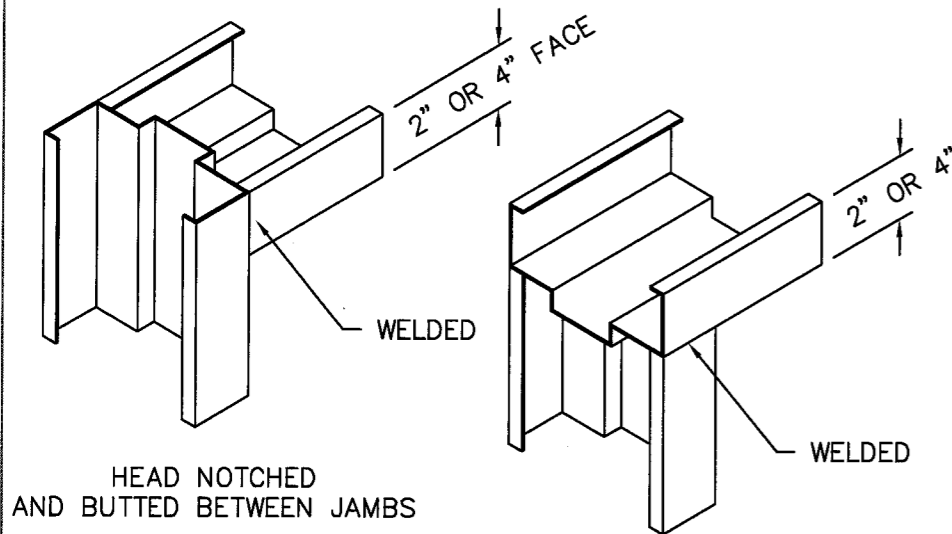
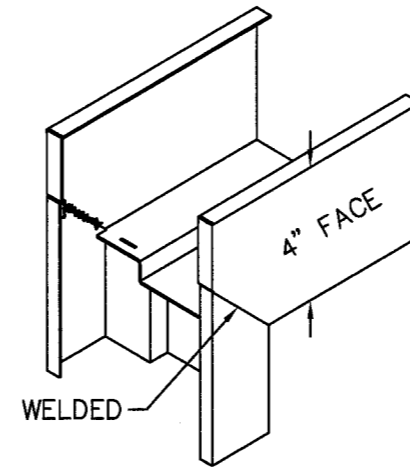
BENT TABS TO SECURE ASSEMBLY



'KD'
"KNOCKED-DOWN"
ASSEMBLY

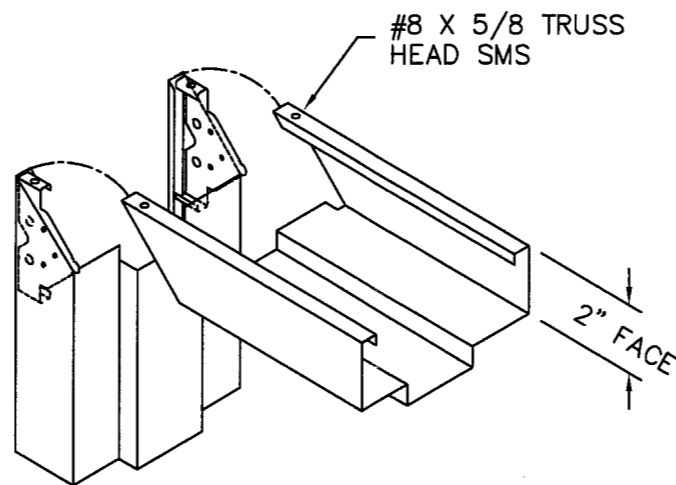


'SUA'
SET-UP AND ARC-WELDED
ASSEMBLY



HEAD NOTCHED
AND BUTTED BETWEEN JAMBS

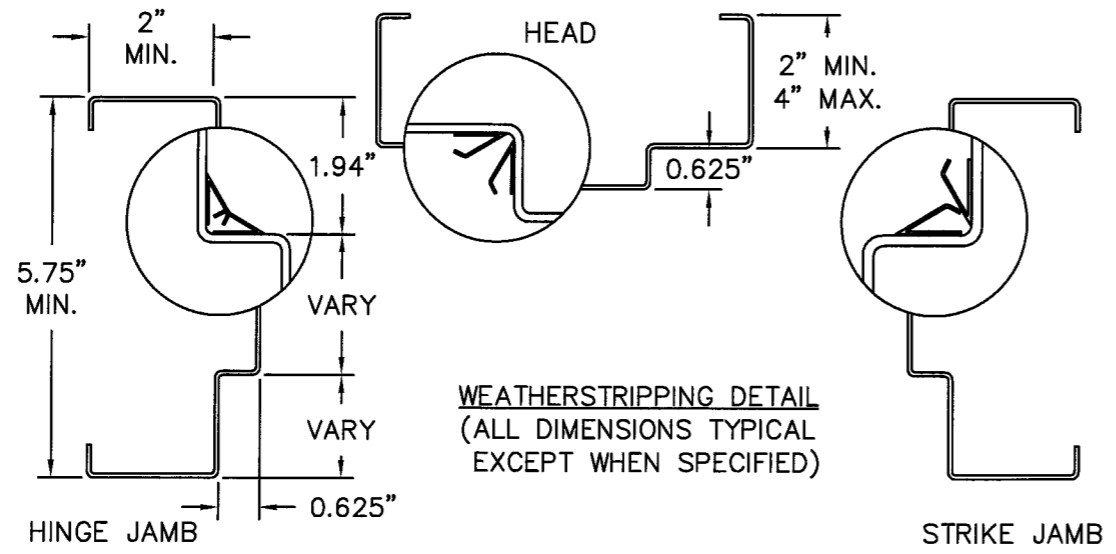
HEAD SITS ON TOP
OF NOTCHED JAMBS



'MU'
"MULTI-USE" SERIES
ASSEMBLY

Handwritten signature
12/1/08
PC 46718

PRODUCT REVIEWED
as complying with the Florida
Building Code
Acceptance No. **08-0908.20**
Expiration Date **NOV. 13, 2013**
By *Manuel Perez*
Miami Code Product Control
Division

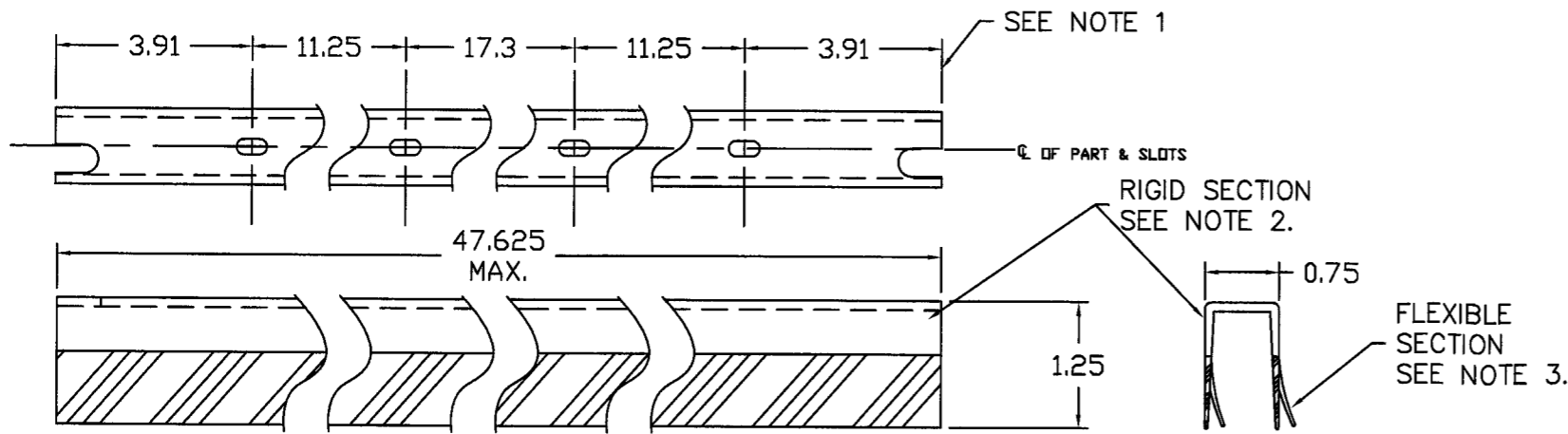


WEATHERSTRIPPING DETAIL
(ALL DIMENSIONS TYPICAL
EXCEPT WHEN SPECIFIED)

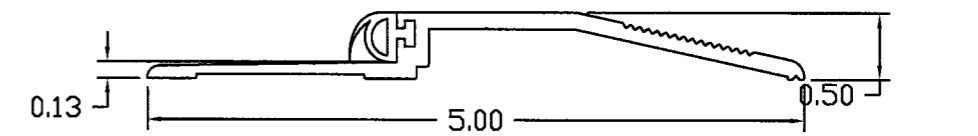
BEND RADIUS				INGERSOLL-RAND COMPANY STEELCRAFT MFG. 9017 BlueAsh Rd. Cincinnati Ohio 45242	
THIRD ANGLE PROJECTION					
DRAWN	DATE	TITLE		DADE COUNTY	
YMF	08/08/02	CORNER DETAILS AND WEATHERSTRIPPING ATTACHMENT FOR FLUSH FRAME AND MU FRAMES			
CHECKED		SIZE	FLAT	DWG NO.	REV
APPROVED				882W-2	B
ENG. APPVL		SCALE:	NTS	AUTOCAD	SHT 6 OF 7

REVISIONS

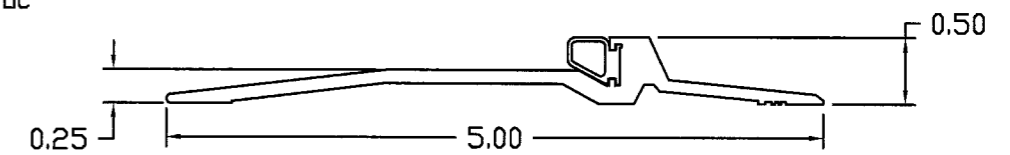
LTR	DESCRIPTION	DATE	APPROVED
A	APPROVAL DWG	02/26/03	
B	ADDED UL LOUVER	05/16/03	
C	MODIFIED PER DC BCCO	10/08/03	



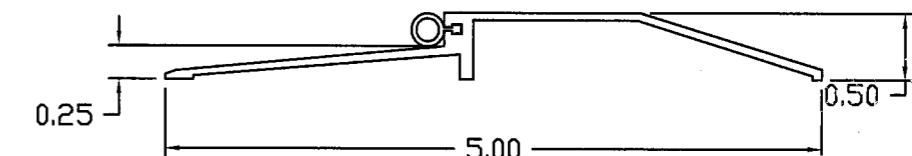
⑬ THRESHOLD OPTIONS



ZERO INT'L 566 SERIES THRESHOLD WITH NEOPRENE BUMPER



PEMCO 2005 SERIES THRESHOLD WITH SILICONE, VINYL OR PILE SEAL



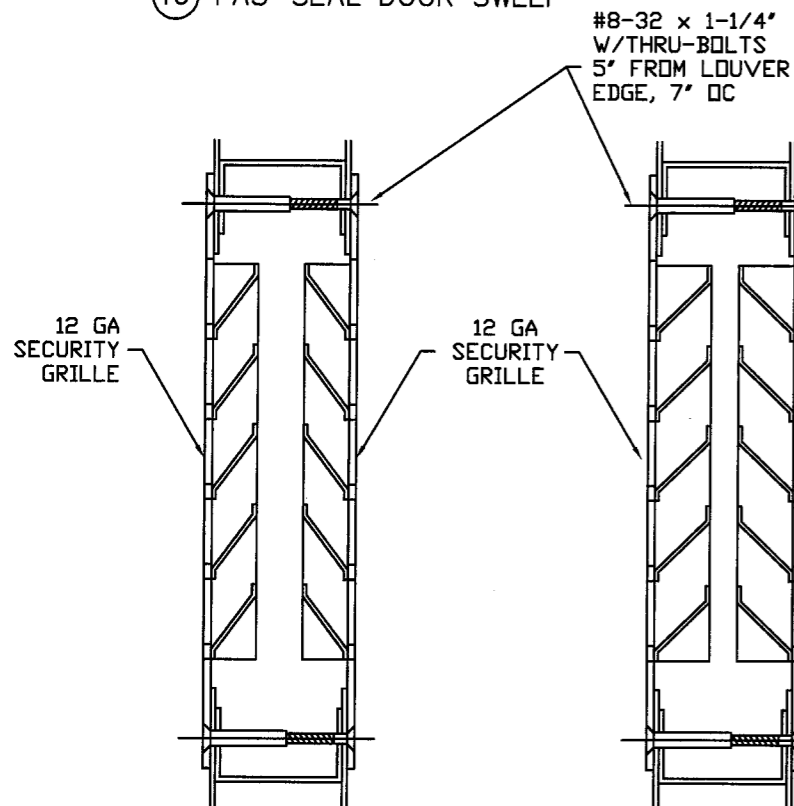
NATIONAL GUARD 950 SERIES THRESHOLD WITH SILICONE, VINYL OR NEOPRENE BUMPER

Handwritten signature and date: 12/1/08, PL46718

NOTES:

1. SLOT LOCATIONS MAY VARY WITH DIFFERENT DOOR WIDTH.
2. DOOR SWEEP RIGID SECTION IS MADE OF PRO-FAX #PD-199 POLYPROPYLENE HOMOPOLYMER
3. DOOR SWEEP FLEXIBLE SECTION IS MADE OF SANTOPRENE #101-73 73 DUROMETER - SHORE A SCALE

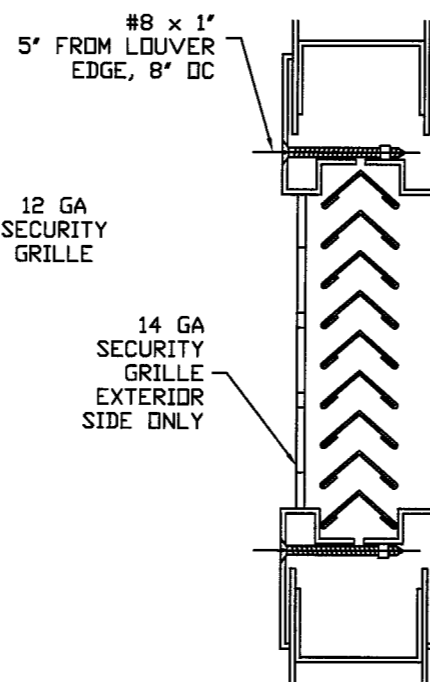
⑯ FAS-SEAL DOOR SWEEP



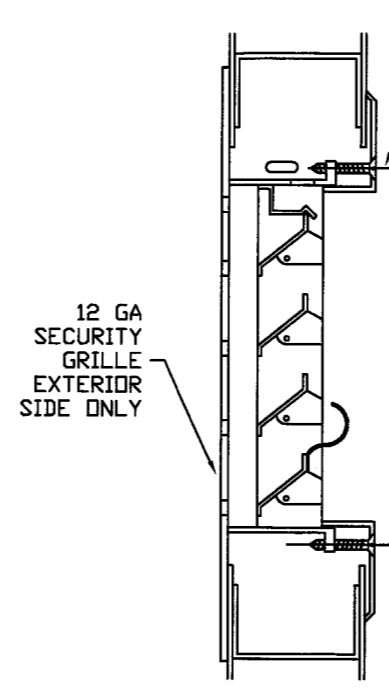
ANEMOSTAT SECURITY LOUVER PLSL

AIR LOUVERS SECURITY LOUVER 1500-A

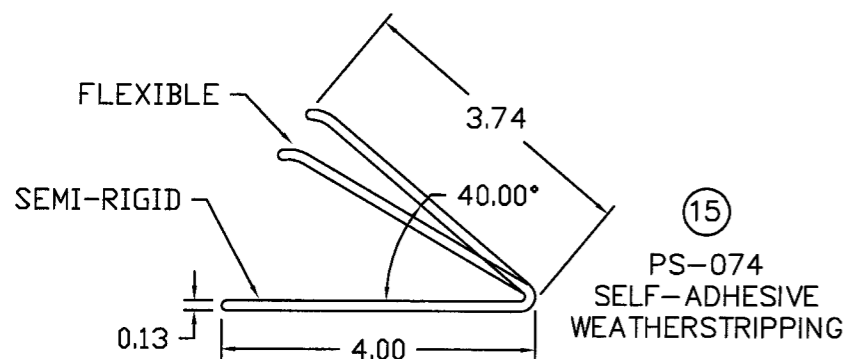
④ LOUVER OPTIONS



NATIONAL GUARD SECURITY LOUVER L-VRSG-2



ANEMOSTAT FUSIBLE LINK SECURITY LOUVER FLDL-UL-SG1 OR FLDL-UL-SG2



⑮

PS-074 SELF-ADHESIVE WEATHERSTRIPPING

PRODUCT REVIEWED as compliant with the Florida Building Code Approved: 08-0908, 20 Nov. 13, 2013
Handwritten signature: Manuel Perez

BEND RADIUS		<p>INGERSOLL-RAND COMPANY STEELCRAFT MFG. 9017 BlueAsh Rd. Cincinnati Ohio 45242</p>	
THIRD ANGLE PROJECTION			
DRAWN YMF	DATE 08/02/02	TITLE DADE COUNTY DOUBLE DOORS ACCESSORIES BOTTOM SEEP THRESHOLDS, SECURITY LOUVERS AND WEATHERSTRIPPING	
CHECKED		SIZE FLAT	DWG NO. 882W-2
APPROVED		SCALE NTS	REV C
ENG. APPVL		AUTOCAD	SHT 7 OF 7