

FIBERGLASS FIRE IN/OUTSWING ENTRANCE DOOR FBC PRODUCT APPROVAL DRAWINGS

ANCHORAGE SCHEDULE AND DESCRIPTION				
SUBSTRATE	ANCHOR	EMBEDMENT	ANCHOR SPACING	EDGE DISTANCE
WOOD FRAMING	#14 WOOD SCREW	MINIMUM 1-1/2"	MINIMUM 1-1/2"	MINIMUM 2"
CONCRETE	1/4" TAPPER	MINIMUM 1-3/8"	MINIMUM 2-1/2"	MINIMUM 2-1/2"
CONCRETE	1/4" TAPCON	MINIMUM 1-1/4"	MINIMUM 2-1/2"	MINIMUM 2-1/2"
CONCRETE	1/4" CRETE-FLEX	MINIMUM 1-1/4"	MINIMUM 2-1/2"	MINIMUM 2-1/2"
STEEL STUD	#14-20 GR 2 SMS	MINIMUM 1"	MINIMUM 1-1/2"	MINIMUM 2"

DESIGN PRESSURE RATING	IMPACT RATING
+/-75.0	LARGE AND SMALL MISSILE

DRAWINGS TABLE OF CONTENTS

- SHEET 1: INDEX TO DRAWINGS AND NOTES
- SHEET 2: ELEVATIONS
- SHEET 3: ANCHORAGE DETAILS
- SHEET 4: BOM AND HARDWARE OPTIONS
- SHEET 5: HARDWARE OPTIONS

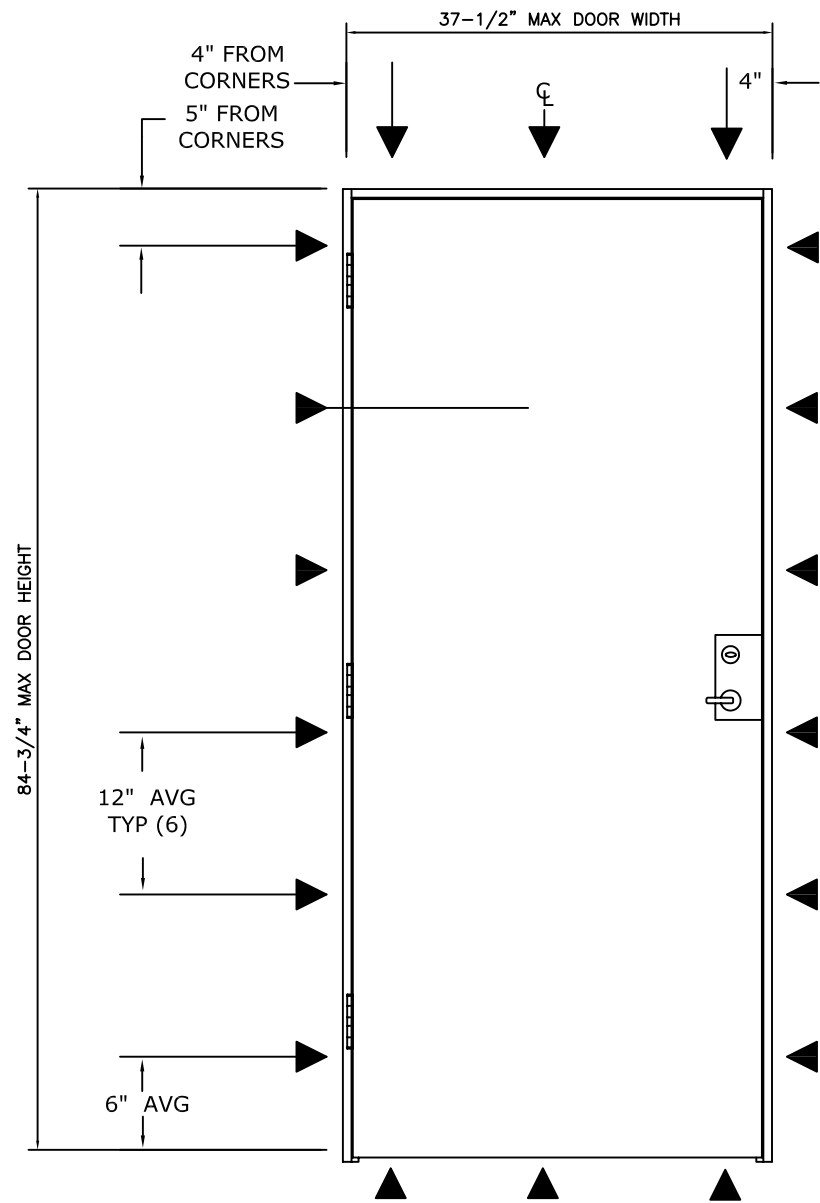
OVERALL SIZE:
37-1/2" x 84-3/4"
(SINGLE DOOR)

PANEL D.L.O.:
35-3/4" X 83"

NOTES:

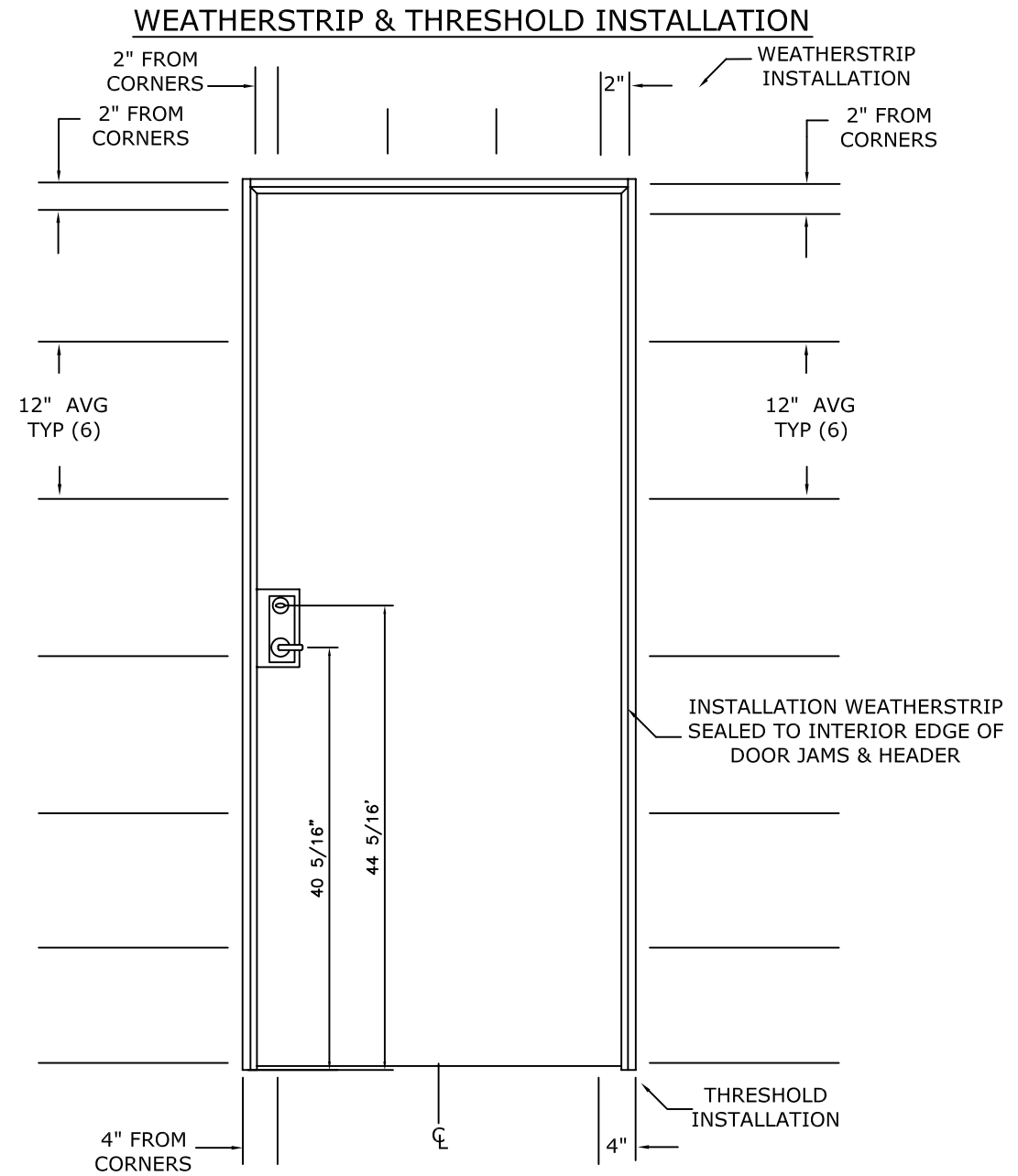
1. THE PRODUCT ILLUSTRATED SATISFIES THE REQUIREMENTS FOR THE FLORIDA BUILDING CODE INCLUDING HVHZ.
2. THE INSTALLATION DRAWINGS DEPICTED WITHIN ARE NECESSARY TO MEET THE STRUCTURAL LOAD REQUIREMENTS. PLEASE SEE THE MANUFACTURER'S INSTALLATION INSTRUCTIONS FOR SEALING, FLASHING AND DRAINAGE REQUIREMENTS.
3. THIS PRODUCT IS IMPACT RESISTANT AND THEREFORE AN APPROVED IMPACT PROTECTION SYSTEM IS NOT REQUIRED FOR THIS PRODUCT IF IT IS INSTALLED IN A WIND BORNE DEBRIS AREA.
4. THIS PRODUCT IS NOT APPROVED FOR USE WHERE WATER INFILTRATION RESISTANCE IS REQUIRED BY THE DOOR, UNLESS UNITS ARE INSTALLED IN A NON-HABITABLE AREA WHERE THE UNIT AND THE AREA ARE DESIGNED TO ACCEPT WATER INFILTRATION. UNITS SHALL BE INSTALLED ONLY AT LOCATIONS PROTECTED BY A CANOPY OR OVERHANG SUCH THAT THE ANGLE BETWEEN THE EDGE OF THE CANOPY OR OVERHANG TO THE SILL IS LESS THAN 45 DEGREES.
5. MAXIMUM ALLOWABLE SHIM STACK TO BE 1/4". SHIM ALL SPACES IN EXCESS OF 1/16".
6. WOOD FRAMING INSTALLATIONS ARE ASSUMED TO BE 2X S-P-F (G=0.42) OR DENSER. WOOD FRAMING SHALL BE GREATER THAN THE WINDOW FRAME WIDTH. TAPERED OR PARTIAL WOOD BUCKS ARE NOT ALLOWED. FOR INSTALLATION INTO WOOD FRAMING USE #14 WOOD SCREWS WITH SUFFICIENT LENGTH TO OBTAIN A 1-1/2" PENETRATION. ANCHORS SHALL BE LOCATED AS DESCRIBED IN THE ELEVATION DETAIL.
7. CONCRETE INSTALLATIONS ASSUME A MINIMUM COMPRESSIVE STRENGTH FOR CONCRETE OF 3,200 PSI . USE A 1/4" ITW TAPCON, A 1/4" POWERS TAPPER OR A 1/4" CRETE-FLEX SS4 ANCHOR FOR INSTALLATION INTO CONCRETE. THE ANCHOR SHALL HAVE A MINIMUM OF 1-1/4" EMBEDMENT. PLEASE SEE TABLE FOR EMBEDMENT REQUIREMENTS FOR EACH ANCHOR. ANCHORS SHALL BE LOCATED AS DESCRIBED IN THE ELEVATION DETAIL.
8. METAL FRAMING INSTALLATION SHALL BE A MINIMUM OF 16 GAUGE 33 KSI STRENGTH METAL. USE A #14 GRADE 2 SMS WITH SUFFICIENT LENGTH TO ACHIEVE FULL PENETRATION OF THE METAL FRAMING AND EMBED 1/4" BEYOND THE DRILL POINT.
9. CORROSIVE RESISTANT FASTENERS SHALL BE USED.
10. WINDOW FRAME MATERIAL SHALL BE FRP MATERIAL.
11. ALLOWABLE STRESS INCREASE OF 1/3 WAS NOT USED IN THE DESIGN OF THE PRODUCT SHOWN, WIND LOAD DURATION FACTOR Cd=1.6 WAS USED FOR WOOD ANCHOR CALCULATIONS.
12. UNITS SHALL BE INSTALLED AS DESCRIBED IN THESE INSTALLATION INSTRUCTIONS AND ALSO IN CONFORMANCE TO THE MANUFACTURER'S PUBLISHED INSTALLATION INSTRUCTIONS.

REVISIONS	MATERIAL	CHEM-PRUF DOOR CO. LTD P.O. BOX 4560, 5224 FM 802 BROWNSVILLE, TX 78521	SCALE NTS
	EST. AREA		DWG NO. 100044D
	EST. WT.		SHEET NO. 1 OF 5
	EST. PERIM.	FIBERGLASS FIRE SINGLE IS/OS DOOR FBC INSTALLATION DRAWINGS GENERAL NOTES	EXTRUSION NO. REV.
	DRAWN BY JMR	DATE 03/21/12	



EXTERIOR VIEW
FIBERGLASS SINGLE FLUSH
INSWING/OUTSWING FIRE DOOR 3' X 7'
ELEVATION

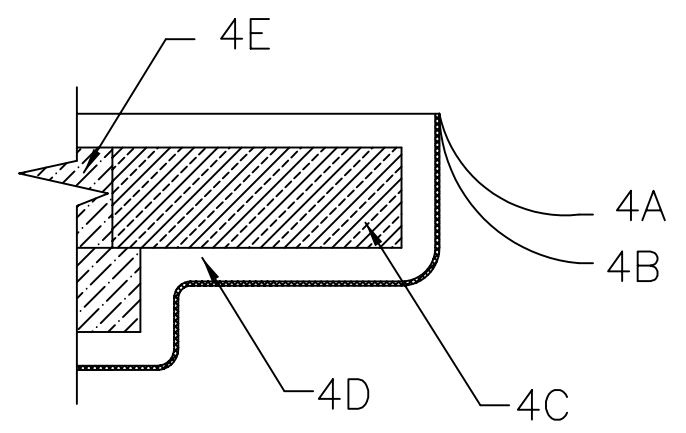
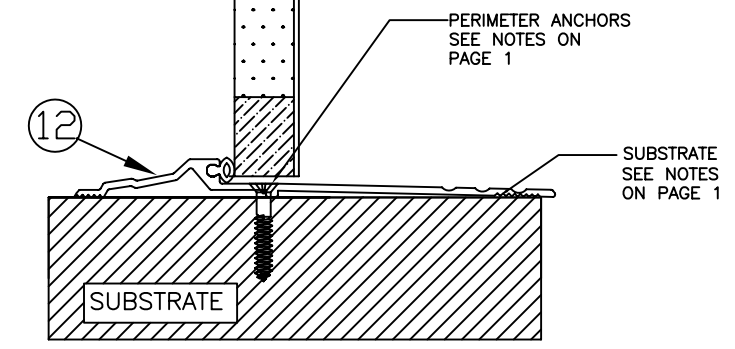
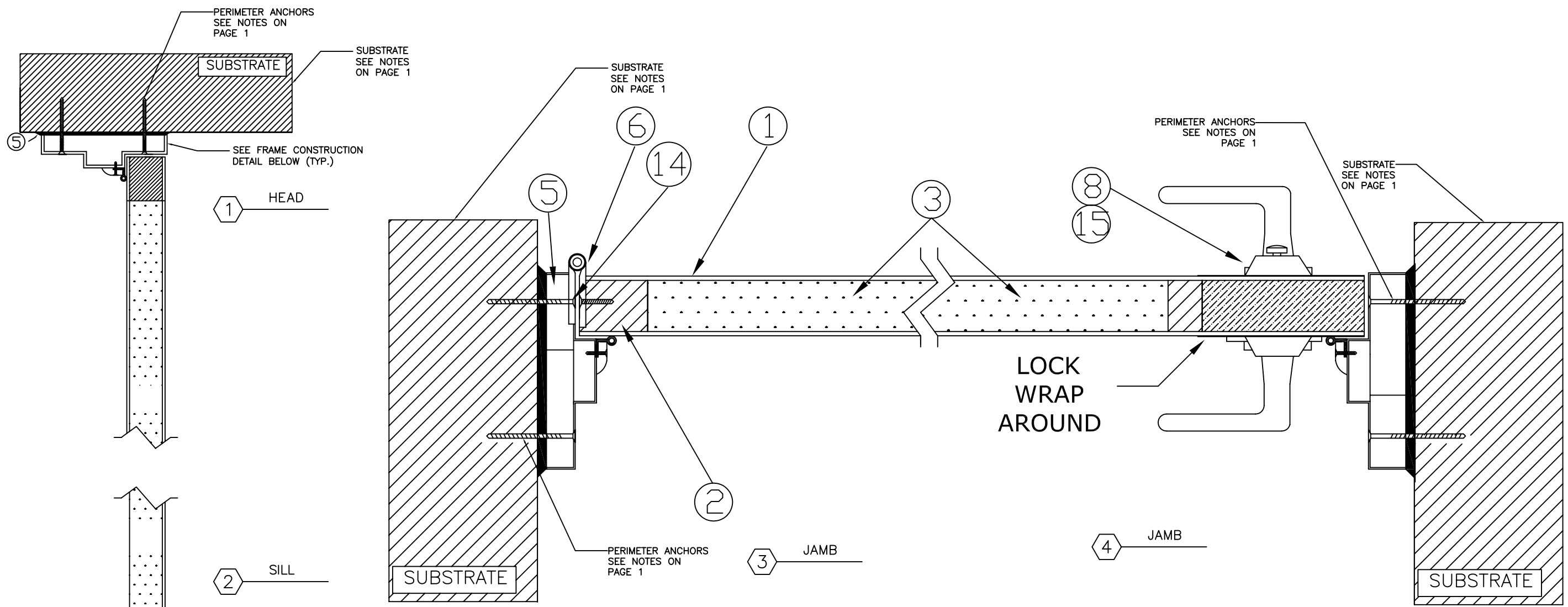
ELEVATION AND ANCHOR LOCATIONS



INTERIOR VIEW
FIBERGLASS SINGLE FLUSH
INSWING/OUTSWING FIRE DOOR 3' X 7'
ELEVATION

WEATHERSTRIP & THRESHOLD
INSTALLATION

REVISIONS		MATERIAL		CHEM-PRUF DOOR CO. LTD P.O. BOX 4560, 5224 FM 802 BROWNSVILLE, TX 78521		SCALE NTS	
		EST. AREA				DWG NO. 100345D	
		EST. WT.		FIBERGLASS FIRE SINGLE IS/OS DOOR FBC INSTALLATION DRAWINGS ELEVATIONS AND ANCHOR DETAILS		SHEET NO. 2 OF 5	
		EST. PERIM.				EXTRUSION NO.	
		DRAWN BY JMR	DATE 03/21/12			REV.	

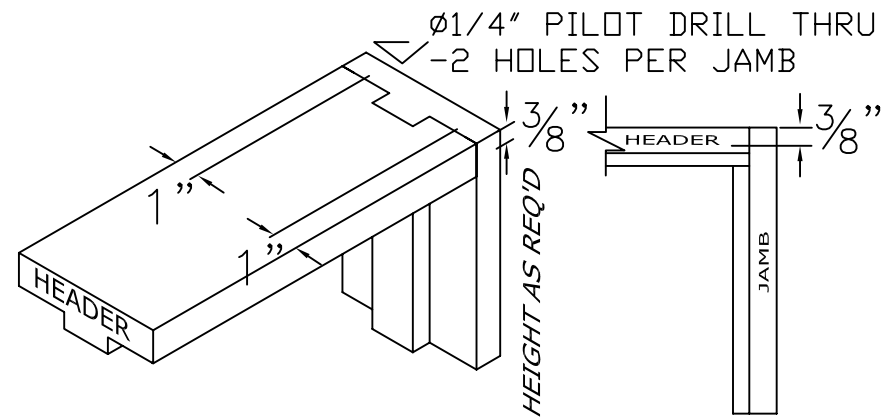


FRAME CONSTRUCTION

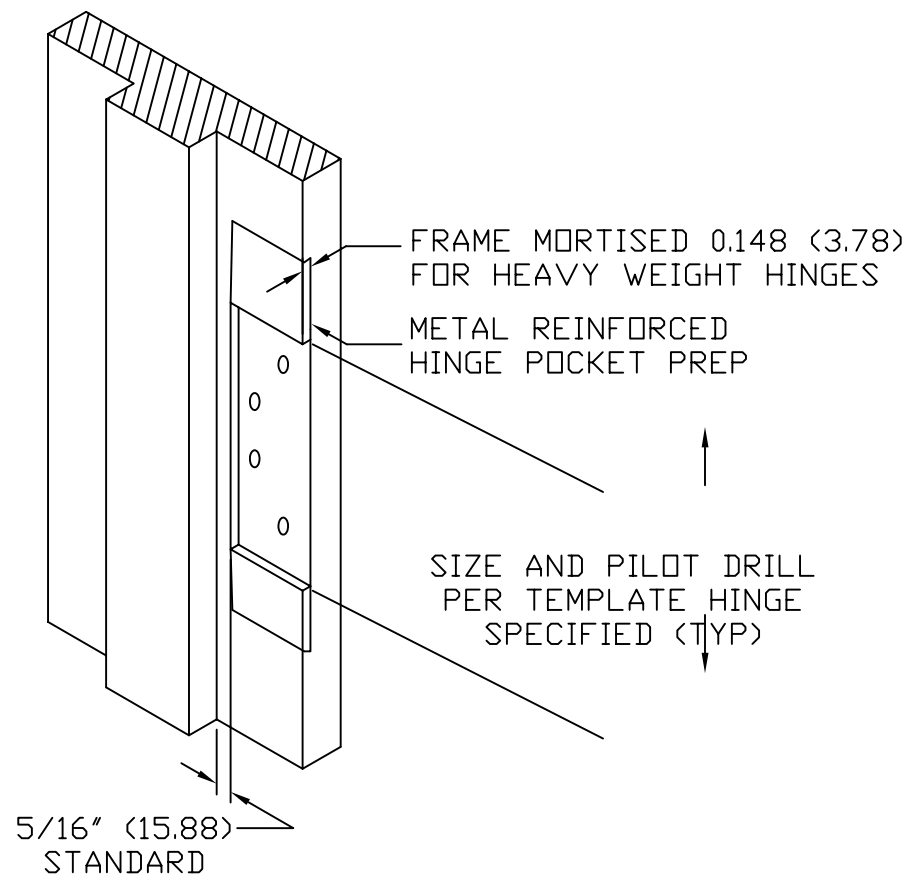
REVISIONS		MATERIAL		CHEM-PRUF DOOR CO. LTD P.O. BOX 4560, 5224 FM 802 BROWNSVILLE, TX 78521		SCALE NTS	
		EST. AREA				DWG NO. 100044D	
		EST. WT.		FIBERGLASS FIRE SINGLE IS/OS DOOR FBC INSTALLATION DRAWINGS INSTALLATION DETAILS		SHEET NO. 3 OF 5	
		EST. PERIM.				EXTRUSION NO. REV.	
		DRAWN BY JMR	DATE 03/21/12				

FRAME CORNER ASSEMBLY

HEADER AND JAMBS ARE ATTACHED USING #10 x 2 1/2" FLAT HEAD PHILIPS SCREWS



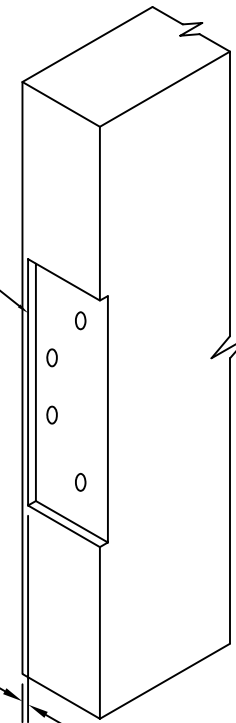
FRAME HINGE RABBET



DOOR HINGE RABBET

DOOR MORTISED 0.148 (3.78) FOR HEAVY WEIGHT HINGES

1/4" STANDARD



BILL OF MATERIAL

ITEM	DESCRIPTION	MATERIAL
1	FIRE RATED PLATE	
2	FIRE STOP	
3	MINERAL CORE	
4	STYLE 1 FRAME JAMB	
	4A	FIRE RETARDANT GELCOAT
	4B	COMBIFLOW MAT
	4C	FIRE STOP CORE
	4D	FIRE RETARDANT RESIN
	4E	MINERAL CORE
5	CAULK MATERIAL (RTD Seal -Silicone-)	
6	HINGE,FM STAN FBB 191 4.5 X 4.5 NRP	
7	1/4"-20 SELF DRILLING SCREW	
8	SARGENT 7500 INTERCONNECTED LOCK	
9	CMU WALL CONSTRUCTION	
10	STYLE 1 HEADER	
	10A	FIRE RETARDANT GELCOAT
	10B	COMBIFLOW MAT
	10C	FIRE STOP CORE
	10D	FIRE RETARDANT RESIN
11	CHEM-PRUF FIRE RATED WEATHERSTRIP	
	11A	STANDARD GELCOAT
	11B	PULTRUDED WEATHERSTRIP
12	NGP 896V PANIC TYPE THRESHOLD	
13	WRAP-AROUND 943-S-CW SS	
14	1/4"-20 SELF DRILLING SCREW	

REVISIONS

NO.	DESCRIPTION	MATERIAL	DATE
		EST. AREA	
		EST. WT.	
		EST. PERIM.	
		DRAWN BY	DATE
		JMR	03/21/12

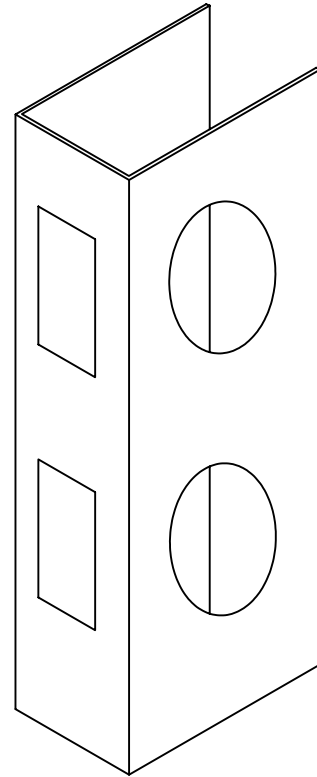
CHEM-PRUF DOOR CO. LTD
P.O. BOX 4560, 5224 FM 802
BROWNSVILLE, TX 78521

FIBERGLASS FIRE SINGLE IS/OS DOOR
FBC INSTALLATION DRAWINGS
HARDWARE DETAILS AND BOM

SCALE	NTS
DWG NO.	100345D
SHEET NO.	4 OF 5
EXTRUSION NO.	REV.

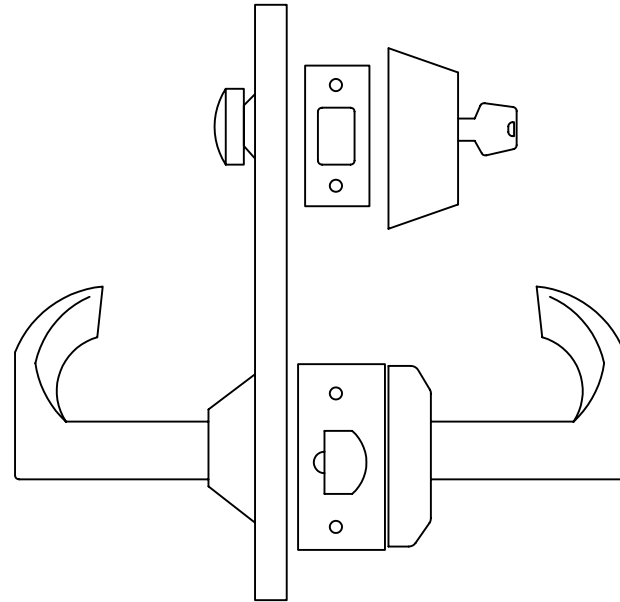
**WRAP-AROUND
943-S-CW DON-JO
STAINLESS STEEL**

- . HELPS PREVENT FORCED ENTRY
- . ADDS STRENGTH TO MOST DOORS



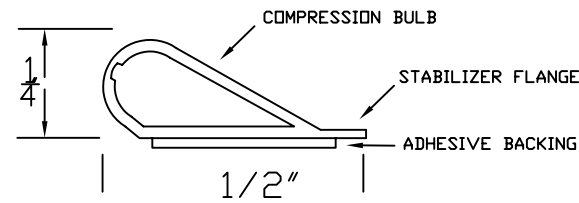
**SARGENT
7500 INTERCONNECTED
LOCK**

- . KEY IN DEADBOLT CYLINDER OUTSIDE RETRACTS AND PROJECTS DEADBOLT
- . LEVER FROM EITHER SIDE RETRACTS LATCHBOLT
- . THUMB TURN INSIDE RETRACTS AND PROJECTS DEADBOLT
- . LEVER INSIDE RETRACTS BOTH LATCHBOLT AND DEADBOLT SIMULTANEOUSLY
- . AUXILIARY DEADLATCH



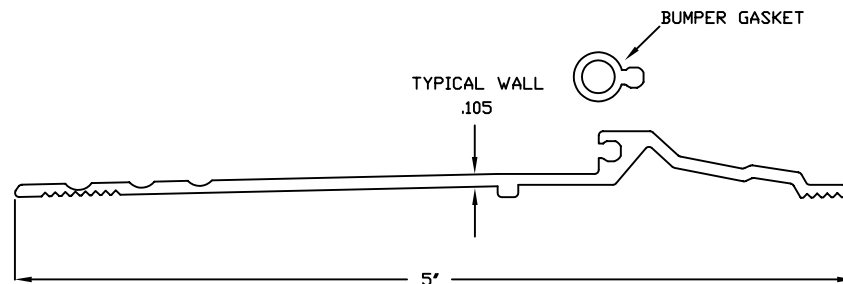
ADHESIVE SILICONE SEAL

- FEATURES AND CERTIFICATIONS
- . ADHESIVE BACKED DOOR GASKET WEATHERSTRIPPING.
 - . BEGINS COMPRESSING AT 1/4" AND CAN BE COMPRESSED SUFFICIENTLY TO SEAL OPENING WITH 1/16" GAPS- WILL NOT LOSE ITS FORM.
 - . STAYS FLEXIBLE WELL BELOW -100 DEGREES FARENHEIT AND RELILENT ABOUT 400 DEGREES FARENHEIT.
 - . IMPERVIUOUS TO FUNGUS AND MILDEW.



NGP 896V PANIC TYPE THRESHOLD

- FEATURES AND CERTIFICATIONS
- . ALUMINUM FINISH
 - . MMEETS THE REQUIREMENTS OF ANSI A156.21
 - . UL LISTED
 - . THE BUMPER GASKET IS MADE OF VINYL AND IS USED TO PROVIDE A SEAL AGAINST THE DOOR AND INCREASE THE WEATHER RESISTANCE OF THE THRESHOLD.

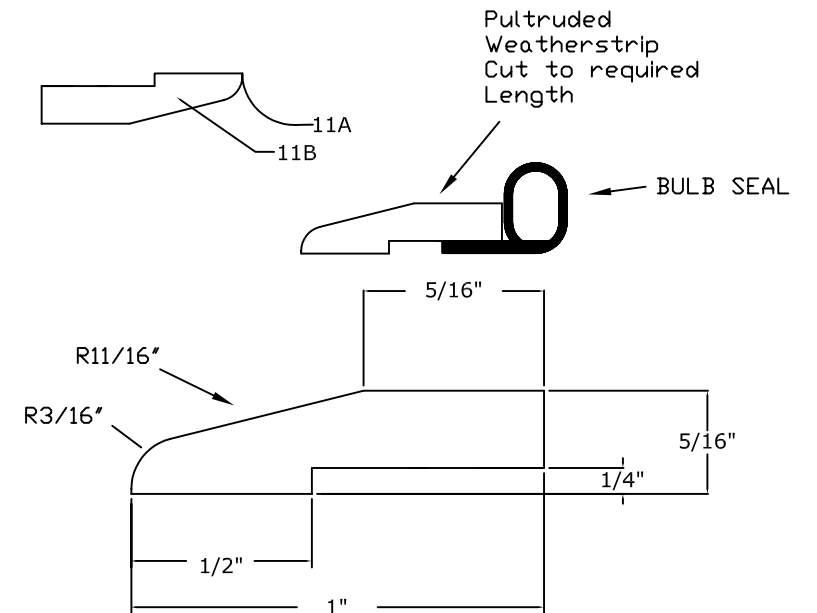


**FRP
WEATHERSTRIP**

- FEATURES AND CERTIFICATIONS
- . PULTRUDED WEATHERSTRIP.
 - . CORROSION RESISTANT.
 - . POST PAINTED TO MATCH DOOR COLOR.
 - . BULB SEAL
 - . SUPPLIED WITH STAINLESS STEEL FASTENERS.
 - . # 6 x 1 1/4 (12) PHP

#	DESCRIPTION
11A	STANDARD GELCOAT
11B	PULTRUDED WEATHERSTRIP

COMPRESSION BULB



REVISIONS		MATERIAL	CHEM-PRUF DOOR CO. LTD P.O. BOX 4560, 5224 FM 802 BROWNSVILLE, TX 78521	SCALE NTS	
		EST. AREA		FIBERGLASS FIRE SINGLE IS/OS DOOR FBC INSTALLATION DRAWINGS HARDWARE DETAILS	DWG NO.
		EST. WT.	100345D		
		EST. PERIM.	SHEET NO.		5 OF 5
		DRAWN BY JMR	DATE 03/21/12		EXTRUSION NO.