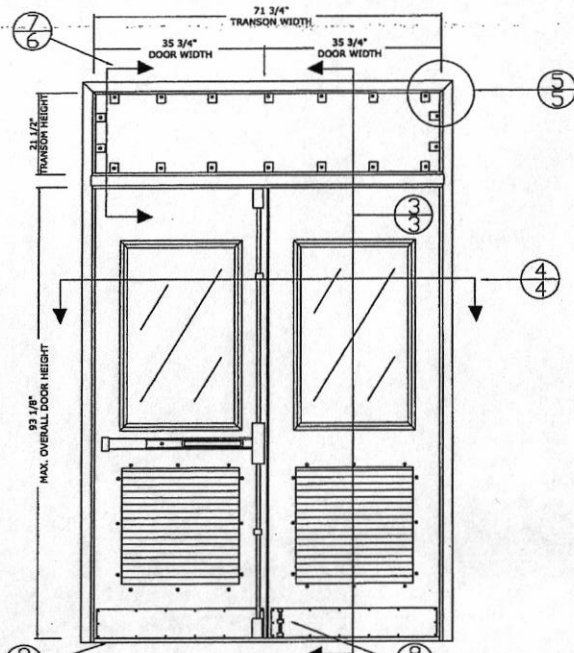


EXTERIOR VIEW  
FIBERGLASS HALF GLASS LOUVERED OUTSWING DOUBLE DOOR



INTERIOR VIEW  
FIBERGLASS HALF GLASS LOUVERED OUTSWING DOUBLE DOOR

TABLE OF CONTENTS	
DETAIL #	DESCRIPTION
1	ELEVATIONS AND GENERAL NOTES
2	ANCHORING INSTALLATION & BILL OF MATERIALS
3	VERTICAL CROSS SECTIONS
4	HORIZONTAL CROSS SECTIONS
5	FRAME CORNER ASSEMBLY
6	HINGE PREP
7	TRANSOM & DOOR CONSTRUCTION
8	HARDWARE

WINDOW - 22" X 36" MAX  
LOUVER - 24" X 24" MAX

DESIGN PRESSURE CAPACITY  
+ 55 PSF / - 55 PSF  
MAXIMUM  
LARGE MISSILE IMPACT

- NOTE:
1. THE PRODUCT SHOWN HEREIN IS DESIGNATED AND MANUFACTURED TO COMPLY WITH THE 2004 & 2007 FLORIDA BUILDING CODE (FBC) INCLUDING THE HIGH VELOCITY HURRICANE ZONE (HVHZ).
  2. BUCK AND MASONRY OPENING TO BE DESIGNED AND ANCHORED TO PROPERLY TRANSFER ALL LOADS TO STRUCTURE. BUCK AND MASONRY OPENING IS THE RESPONSIBILITY OF THE ARCHITECT OR ENGINEER OF RECORD.
  3. SHIM AS REQUIRED AT EACH INSTALLATION ANCHOR WITH LOAD BEARING SHIM. SHIM WHERE SPACE OF 1/16" OR GREATER OCCURS, MAXIMUM TOTAL ALLOWANCE SHIM STACK 1/4".
  4. USE LATEX CAULK FOR PERIMETER SEAL AROUND EXTERIOR OF DOORS.
  5. DOOR FRAME AND DOOR PANEL MATERIAL: FRP
  6. SEAL HEAD, SILL AND JAMB CORNERS WITH SMALL JOINT SEAM SEALER.

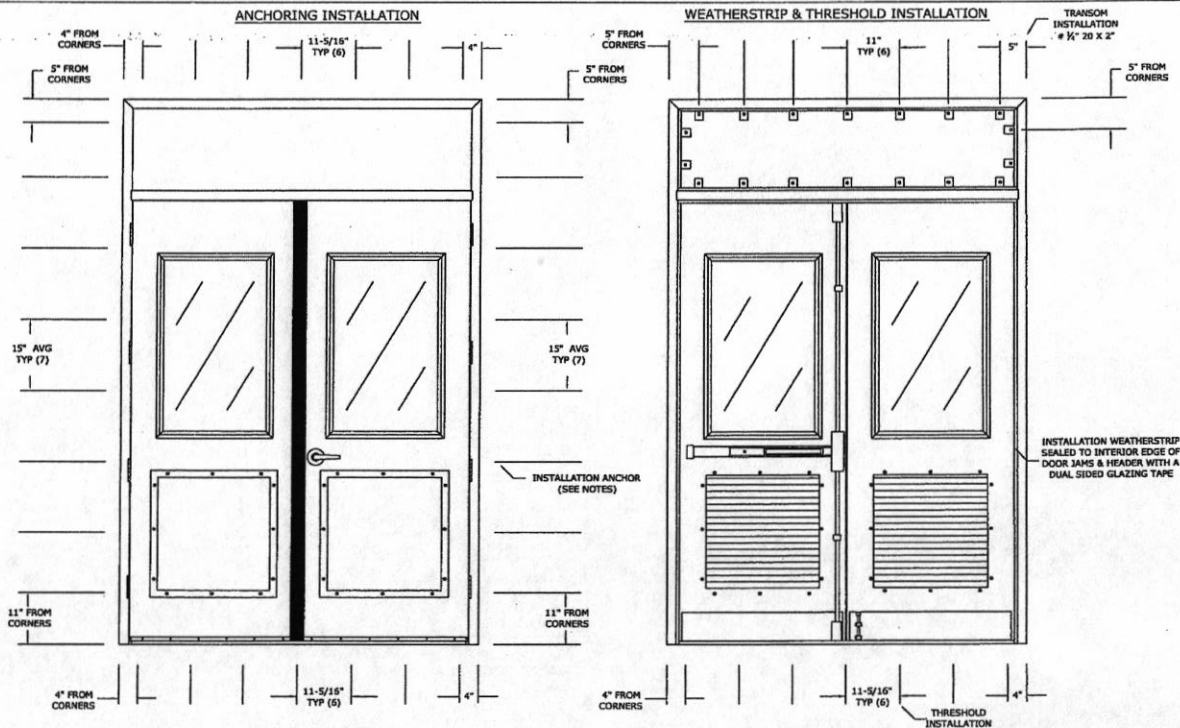
ETC Laboratories Report #: ETC-08-1042-21576.0  
Verified By: MS Date: 04/14/2009

FOR FBC USE:

**CHEM PRUF**  
P.O. BOX 4560 BROWNSVILLE, TX 78523  
1-800-444-6924 / FAX: (956) 544-7943  
www.chem-pruf.com

3' x 8' FIBERGLASS DOUBLE DOOR WITH WINDOW, LOUVER & TRANSOM INSWING / OUTSWING Q#70910  
ELEVATIONS AND GENERAL NOTES

DWG. NO.: FBC TEST # 2	PAGE: 1 OF 7		
SCALE	DWN BY	REV. #	DATE
N.T.S.	E.G	-	10/13/08



EXTERIOR VIEW  
FIBERGLASS HALF GLASS LOUVERED OUTSWING DOUBLE DOOR

INTERIOR VIEW  
FIBERGLASS HALF GLASS LOUVERED OUTSWING DOUBLE DOOR

**ANCHORING NOTES:**  
**ANCHORING INSTALLATION**

1. **Concrete:** 1/4" DIAMETER ELCO TAPCON OR EQUIVALENT MUST BE OF SUFFICIENT LENGTH TO ACHIEVE 1 1/4" MINIMUM EMBEDMENT INTO MASONRY OR CONCRETE W/2 1/2" MINIMUM EDGE DISTANCE.

**Wood:** #14 WOOD SCREW OR EQUIVALENT MUST BE OF SUFFICIENT LENGTH TO ACHIEVE 1 1/2" MINIMUM EMBEDMENT INTO WOOD-FRAMING.  
4" MAXIMUM FROM ALL CORNERS. ONE AT THE MID-SPAN OF PANEL.  
ALL OTHER ANCHORS ARE LOCATED 22" AN CENTER MAXIMUM THEREAFTER.

2. ALL INSTALLATION ANCHORS MUST BE MADE OF CORROSION RESISTANT MATERIAL.

**FASTENER SCHEDULE**

FASTENER TYPE	WOOD	CONCRETE	STEEL
	FLAT HEAD PHILLIPS SS WOOD SCREW	FLAT HEAD PHILLIPS (CHF 770 CRETE-FLEX) ZE370 DRILL	FLAT HEAD PHILLIPS SS MACHINE SCREW
FASTENER SIZE	#14 X 4"	14-10 X 3 1/4"	1/4-20 X 2 3/4"
MINIMUM EMBEDMENT	1 3/4"	1 3/4"	3/4"
MINIMUM EDGE DIST	1 1/4"	2 1/2"	3/4"

BILL OF MATERIAL	
ITEM	DESCRIPTION
1	STANDARD GELCOAT
2	COMBIFLOW MAT
3	FOAM FILLER
4	TRIVERA
5	PANIC DEVICE SGT 8713 ETL
6	FRP ANGLE
7	FLUSH BOLT MANUAL TRIMCO 3917
8	SURFACE BOLT TRIMCO 3922
9	WINDOW FRP RETAINER WXL 22" X 36"
10	FRP LOUVER COVER 24" X 24"
11	CAULK MATERIAL
12	HINGE, FM STAN FBB 191 4.4 X 4.5 NRP
13	FRP PLATE
14	CARDBOARD HONEYCOMB
15	IMPACT RESISTANT LAMINATED 9/16" GLAZING
16	2" FRAME JAMB 5-3/4" THICK
	A) 5 1/4" x 3/8" TRIVERA.
	B) 5 1/4" x 1" FOAM FILLER.
	C) 1 1/2" x 5/8" FOAM FILLER.
16	AUTO DOOR BOTTOM 0360A
17	LOUVER STD INVERTED "V" 24" X 24"
18	KICKPLATE TRIMCO 634 304SS
19	THRESHOLD SADDLE ZERO 655 A
20	WEATHERSTRIP CHEM-PRUF
21	SWEEP CHEM-PRUF
22	FRP MULLION 2-1/4" STYLE IV
23	TRANSOM CP FRP REMOVABLE
	A) RESIN TREATED WOOD
	B) POLYURETHANE FOAM
	C) CHOPPED STRAND FIBERGLASS MAT
	D) WOVEN ROVING
26	ASTRAGAL, FIBERGLASS CPH-A WITH SEAL
	A) STANDARD GELCOAT
	B) NEOPRENE SEAL

ETC Laboratories Report #: ETC-08-1042-21576.0  
Verified By: *mm* Date: 04/14/2009

FOR FBC USE:



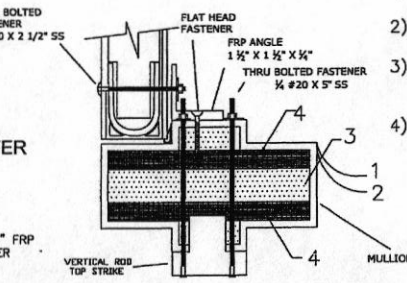
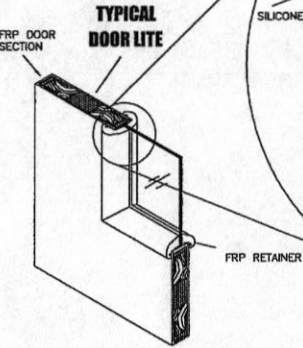
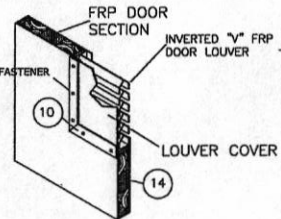
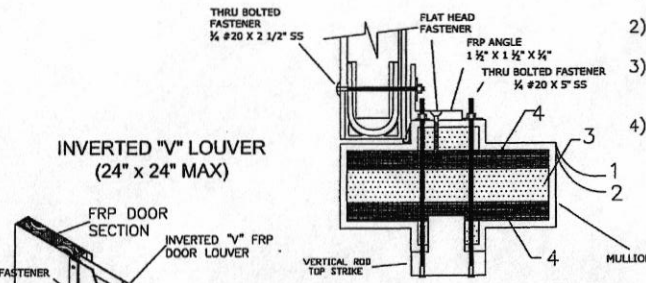
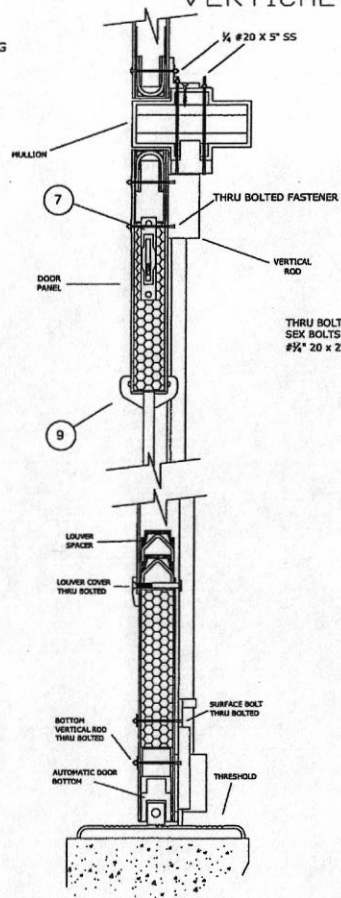
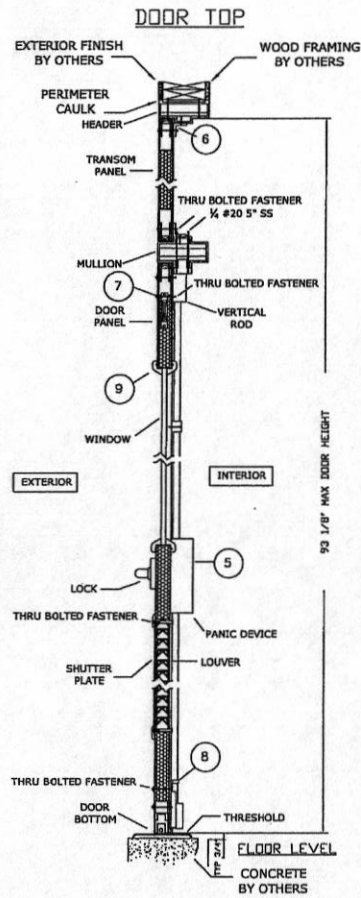
P.O. BOX 4560 BROWNSVILLE, TX 78523  
1-800-444-6924 / FAX: (956) 544-7943  
www.chem-pruf.com

3'x 8' FIBERGLASS DOUBLE DOOR WITH WINDOW, LOUVER & TRANSOM INSWING / OUTSWING Q#70910 ANCHORING INSTALLATION & BILL OF MATERIAL

DWG. NO.: FBC TEST # 2	PAGE: 2 OF 7		
SCALE	DWN BY	REV. #	DATE
N.T.S.	E.G.	-	10/13/08

3

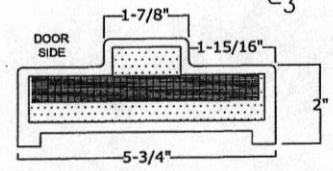
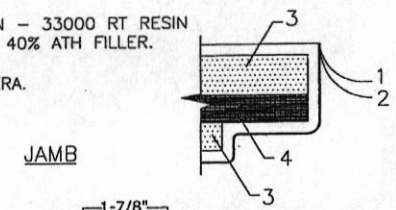
VERTICAL CROSS-SECTION



FRAME CONSTRUCTION

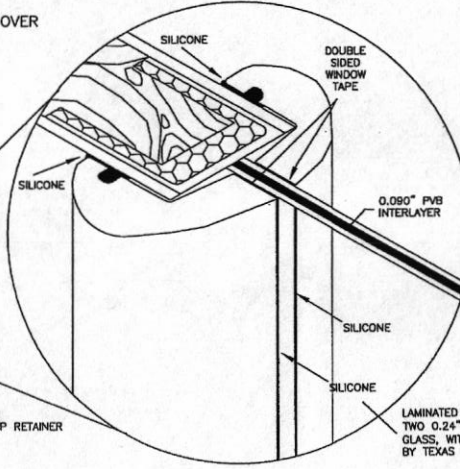
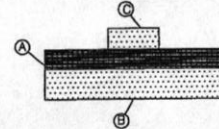
- 1). GELCOAT 25 MILLS.
- 2). LAYER COMBIFLO MAT
- 3). RESIN - 33000 RT RESIN WITH 40% ATH FILLER.
- 4). TRIVERA.

#	DESCRIPTION
1	GELCOAT
2	COMBIFLOW MAT
3	FOAM FILLER
4	TRIVERA



CORE DIMENSIONS

- A) 5 1/4" x 3/8" TRIVERA.
- B) 5 1/4" x 1" FOAM FILLER.
- C) 1 1/2" x 5/8" FOAM FILLER.



LAMINATED GLASS CONSISTING OF TWO 0.24\"/>

ETC Laboratories Report #: ETC-08-1042-21576.0  
 Verified By: MS Date: 04/14/2009

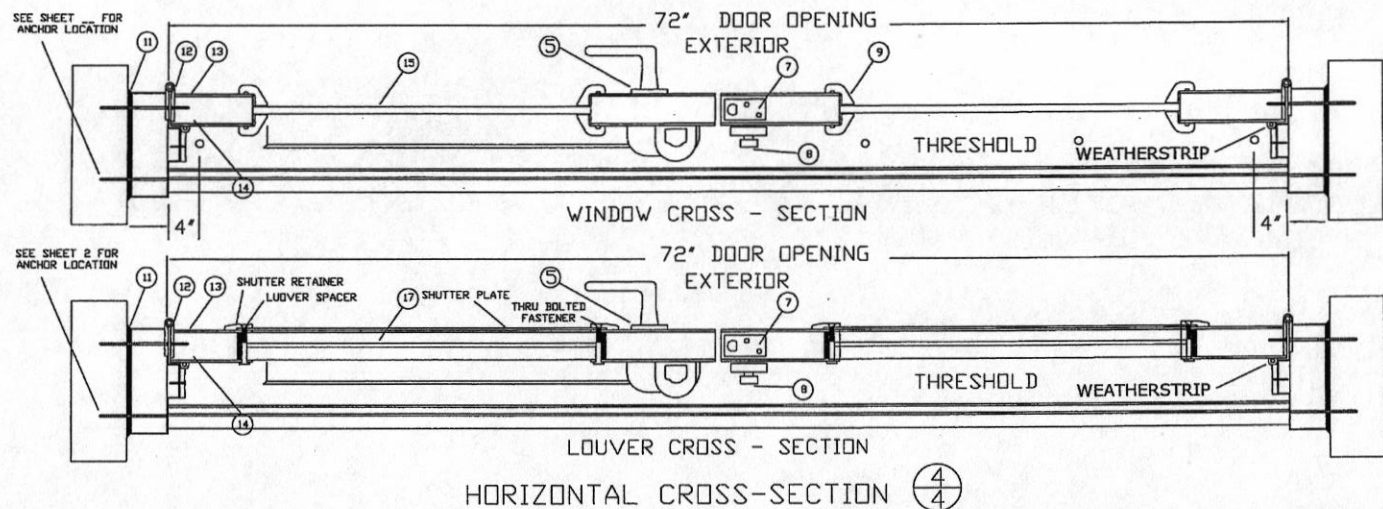
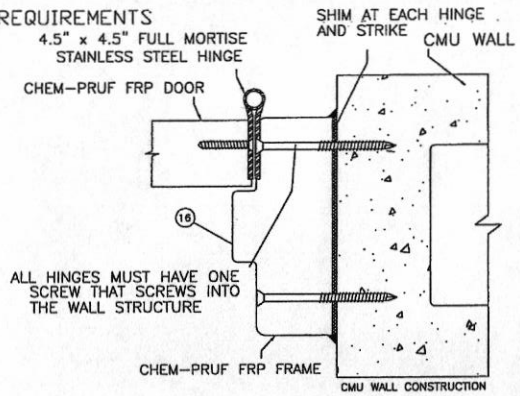
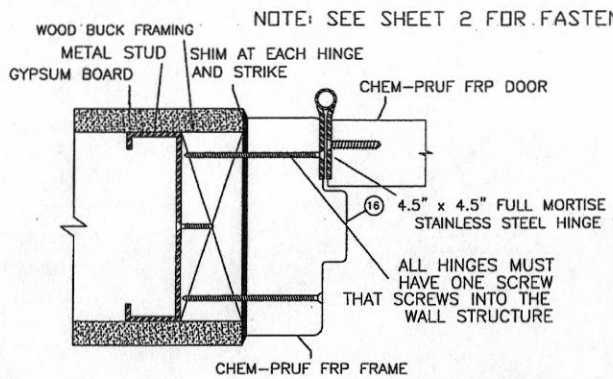
FOR FBC USE:



P.O. BOX 4560 BROWNSVILLE, TX 78523  
 1-800-444-6924 / FAX: (956) 544-7943  
 www.chem-pruf.com

3' x 8' FIBERGLASS DOUBLE DOOR WITH WINDOW, LOUVER & TRANSOM INSWING / OUTSWING Q#70910 VERTICAL CROSS-SECTION

DWG. NO.:	FBC TEST # 2	PAGE:	3 OF 7
SCALE	DWN BY	REV. #	DATE
N.T.S.	E.G.	-	10/13/08



ETC Laboratories Report #: ETC-08-1042-21575.0  
Verified By: *MVJ* Date: 04/14/2009

FOR FBC USE:



P.O. BOX 4560 BROWNSVILLE, TX 78523  
1-800-444-6924 / FAX: (956) 544-7943  
www.chem-pruf.com

3' x 8' FIBERGLASS DOUBLE DOOR WITH WINDOW, LOUVER & TRANSOM INSWING / OUTSWING Q#70910 HORIZONTAL CROSS-SECTION

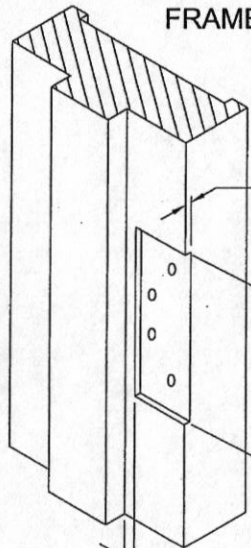
DWG. NO.: FBC TEST # 2		PAGE: 4 OF 7	
SCALE	DWN BY	REV. #	DATE
N.T.S.	E.G.	-	10/13/08

**HINGE POCKET PREPARATION**

CHEM-PRUF® STANDARD

6/5

**FRAME HINGE RABBET**



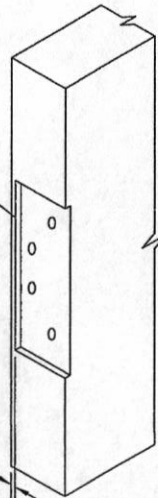
FRAME MORTISED 0.148 (3.78) FOR HEAVY WEIGHT HINGES

SIZE AND PILOT DRILL PER TEMPLATE HINGE SPECIFIED (TYP)

5/16" (15.88) STANDARD

**DOOR HINGE RABBET**

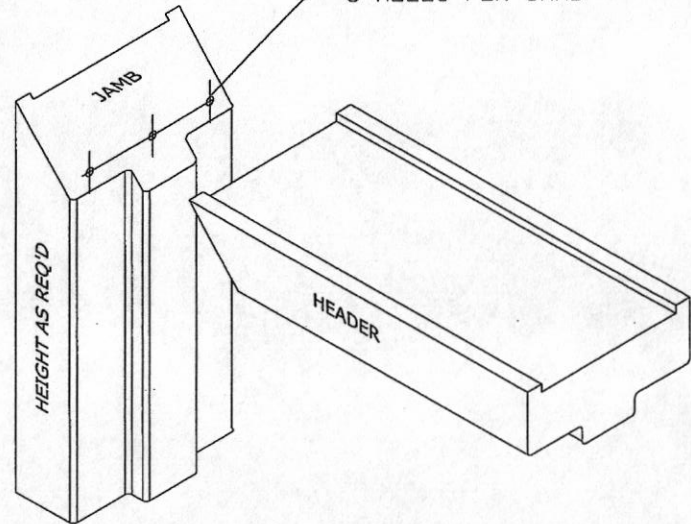
DOOR MORTISED 0.148 (3.78) FOR HEAVY WEIGHT HINGES



1/4" STANDARD

HEADER AND JAMBS ARE ATTACHED USING #10 x 2 1/2" FLAT HEAD PHILIPS SCREWS

Ø1/4" PILOT DRILL THRU -3 HOLES PER JAMB



5/5

**FRAME CORNER ASSEMBLY**

ETC Laboratories Report #: ETC-08-1042-21576.0  
Verified By: *MS* Date: 04/14/2009

FOR FBC USE:



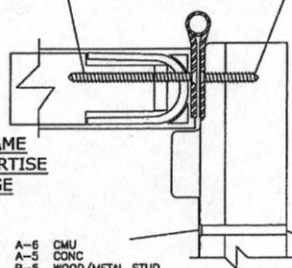
P.O. BOX 4560 BROWNSVILLE, TX 78523  
1-800-444-6924 / FAX: (956) 544-7943  
www.chem-pruf.com

3' x 8' FIBERGLASS DOUBLE DOOR WITH WINDOW, LOUVER & TRANSOM INSWING / OUTSWING Q#70910  
FRAME CORNER ASSEMBLY & HINGE PREP

DWG. NO.:	FBC TEST # 2	PAGE:	5 OF 7
SCALE	DWN BY	REV. #	DATE
N.T.S.	E.G.	-	10/13/08

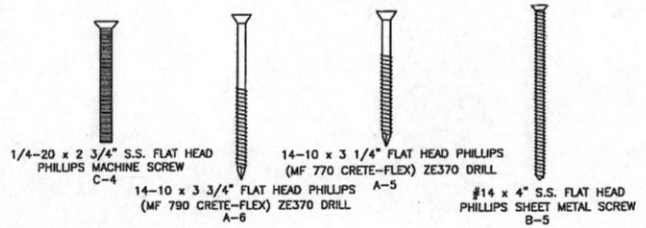
#12 X 3" S.S. FLAT HEAD PHILLIPS SHEET METAL SCREW  
 #12 X 1 1/4" S.S. FLAT HEAD PHILLIPS SHEET METAL SCREW

2" FRAME FULL MORTISE HINGE



A-6 CHU  
 A-5 CONC  
 B-5 WOOD/METAL STUD  
 C-4 STEEL

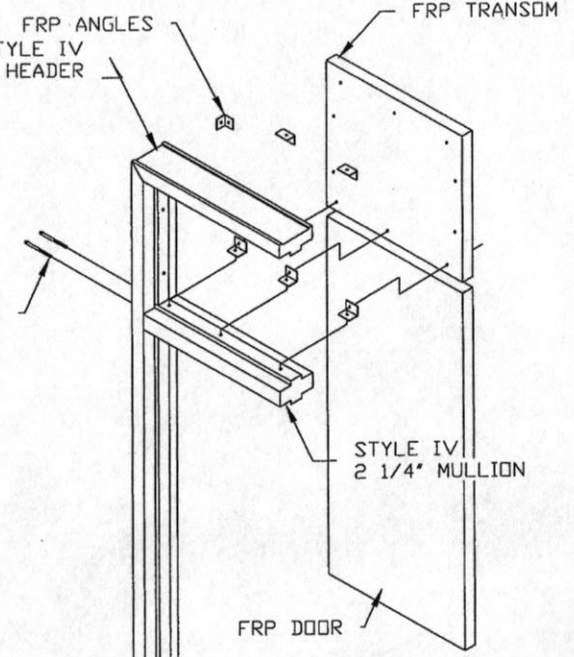
FRAME SCREW SUPPLIED, FIELD DRILL & COUNTERSINK



FRP ANGLES  
 STYLE IV HEADER

FRP TRANSOM

1/4 x 4" HEX LAG SCREW

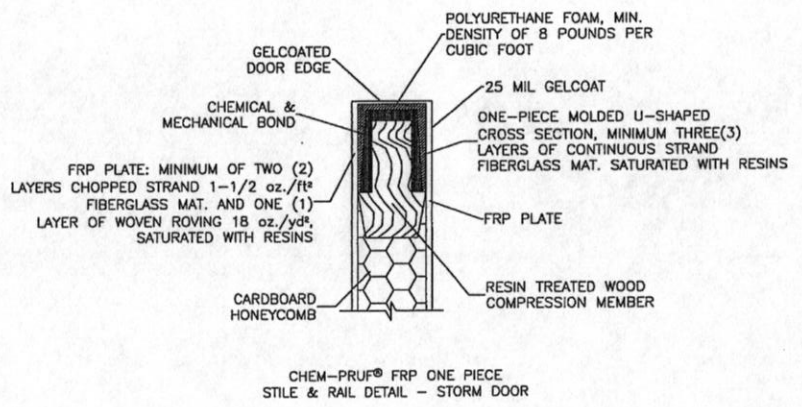
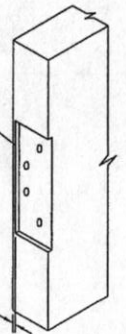


NOTE: SAME CONSTRUCTION FOR SINGLE AND DOUBLE DOORS

DOOR HINGE RABBET

DOOR MORTISED 0.148 (3.78) FOR HEAVY WEIGHT HINGES

1/4" STANDARD



CHEM-PRUF® FRP ONE PIECE STILE & RAIL DETAIL - STORM DOOR

7/6 FRAME CORNER ASSEMBLY

ETC Laboratories Report #: ETC-08-1042-21576.0  
 Verified By: MS Date: 04/14/2009

FOR FBC USE:



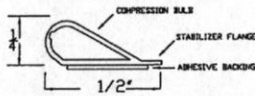
P.O. BOX 4560 BROWNSVILLE, TX 78523  
 1-800-444-6924 / FAX: (956) 544-7943  
 www.chem-pruf.com

3' x 8' FIBERGLASS DOUBLE DOOR WITH WINDOW, LOUVER & TRANSOM INSWING / OUTSWING Q#70910 TRANSOM & DOOR CONSTRUCTION

DWG. NO.:	FBC TEST # 2	PAGE:	6 OF 7
SCALE	DWN BY	REV. #	DATE
N.T.S.	E.G.	-	10/13/08

### ADHESIVE SILICONE SEAL

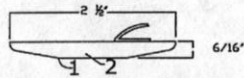
- FEATURES AND CERTIFICATIONS**
- ADHESIVE BACKED DOOR GASKET WEATHERSTRIPPING
  - BEGINS COMPRESSING AT 1/2" AND CAN BE COMPRESSED SUFFICIENTLY TO SEAL OPENINGS WITH 1/4" GAPS- WILL NOT LOSE ITS FORM.
  - STAYS FLEXIBLE WELL BELOW -100 DEGREES FARENHEIT AND RELIABLE ABOUT 400 DEGREES FARENHEIT.
  - IMPERVIOUS TO FUNGUS AND MILDEW.



### FRP ASTRAGAL

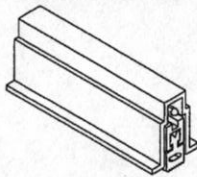
- FEATURES AND CERTIFICATIONS**
- MOLDED FIBERGLASS DOOR SWEEP
  - MANUFACTURED BY CHEM-PRUF.
  - CORROSION RESISTANT.
  - COLOR MOLDED IN TO MATCH DOOR
  - NEOPRENE VIPER
  - SUPPLIED WITH STAINLESS STEEL FASTENERS.

#	DESCRIPTION
1	STANDARD GELCOAT
2	FRP ASTRAGAL



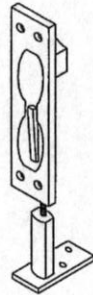
### AUTO DOOR BOTTOM (MDR) ZERO 360A

All zero automatic door bottom function the same way. The recession causes the door to be attracted to the side of the door frame. It prevents the door from dropping along the floor or threshold side the door is being closed.



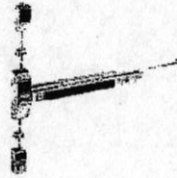
### FLUSH BOLT, MANUAL IVES FB 458

- OVERALL SIZE 1" x 6-3/4" THRU 1 1/16" (3917 & V3917) THRU 1-1/4" (3922) ROD LENGTH 12" STANDARD**
- MATERIAL EXTRUDED (3917 & 3917ET) MATERIAL WROUGHT (V3917)**
- 1-1/2" BOLT HEAD STANDARD (3917-1E)  
3" BOLT HEAD (3917-3B) IS ALSO AVAILABLE.  
LONGER ROD LENGTHS ARE AVAILABLE ON REQUEST.  
THE 3917 & V3917 ARE UL LISTED.



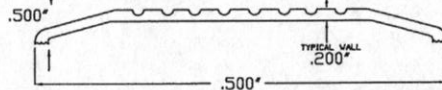
### PANIC DEVICE SGT 8713 ETL

- Run U.L. fire label exit device with 700 series ET lever handle control.
- High impact resistant Lexan touchpad on roll assembly. Maximum 3" (77mm) projection, minimum 2 1/8" (51mm) push side.
- High security Keelo, V20 and Signature Series available roll assemblies and end caps are Brass, Bronze or Stainless Steel.
- Stainless steel springs.
- Roll travels in direction of door swing.
- Trim is Urova coated.
- All exit devices meet ANSI standard 156.3, Grade 1.
- All exit devices are UL Listed.



### THRESHOLD SADDLE ZERO 655 A

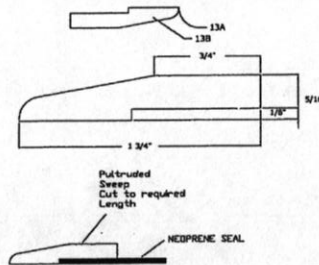
- FEATURES AND CERTIFICATIONS**
- ALUMINUM FINISH
  - MEETS THE REQUIREMENTS OF ANSI A156.21
  - UL LISTED



### FRP DOOR SWEEP

- FEATURES AND CERTIFICATIONS**
- MOLDED FIBERGLASS DOOR SWEEP
  - MANUFACTURED BY CHEM-PRUF.
  - CORROSION RESISTANT.
  - COLOR MOLDED IN TO MATCH DOOR.
  - NEOPRENE VIPER
  - SUPPLIED WITH STAINLESS STEEL FASTENERS.
  - 88 1 1/4 (6) PHP

#	DESCRIPTION
13A	STANDARD GELCOAT
13B	FRP SWEEP



### SURFACE BOLT TRIMCO 3922

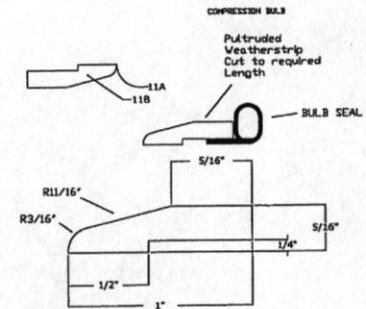
- Overall Size 2" x 32"**
- Thru 1-5/8"
- Projection 1-5/16"
- Material: Steel 3/4" x 1/4"
- Also available in Stainless Steel.
- Furnished with both Surface and Horizontal Strikes.
- UL Listed
- BMA = L84161
- SS, Steel (Plated)



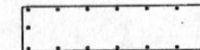
### FRP WEATHERSTRIP

- FEATURES AND CERTIFICATIONS**
- PULTRUDED WEATHERSTRIP.
  - CORROSION RESISTANT.
  - POST PAINTED TO MATCH DOOR COLOR.
  - BULB SEAL
  - SUPPLIED WITH STAINLESS STEEL FASTENERS.
  - 88 x 1 1/4 (6) PHP

#	DESCRIPTION
11A	STANDARD GELCOAT
11B	PULTRUDED WEATHERSTRIP



### KICKPLATE TRIMCO 634 304SS



FOR FBC USE:



P.O. BOX 4560 BROWNSVILLE, TX 78523  
1-800-444-6924 / FAX: (956) 544-7943  
www.chem-pruf.com

3' x 8' FIBERGLASS DOUBLE DOOR WITH WINDOW, LOUVER & TRANSOM INSWING / OUTSWING Q#70910  
HARDWARE

DWG. NO.:	FBC TEST # 2	PAGE:	7 OF 7
SCALE	DWN BY	REV. #	DATE
N.T.S.	E.G.	-	10/13/08

ETC Laboratories Report #: ETC-08-1042-21576.0  
Verified By: MS Date: 04/14/2009

8  
7