

GENERAL NOTES  
(VALID FOR REGULAR, LIFE SAFETY & E-Z HANG STORM PANELS):

1. STORM PANEL SHOWN ON THIS PRODUCT EVALUATION DOCUMENT (P.E.D.) HAS BEEN VERIFIED FOR COMPLIANCE IN ACCORDANCE WITH THE 2010 EDITION OF THE FLORIDA BUILDING CODE.  
THIS STORM PANEL SHALL NOT BE INSTALLED AT HIGH VELOCITY HURRICANE ZONES (MIAMI-DADE / BROWARD COUNTIES).
- DESIGN WIND LOADS SHALL BE DETERMINED AS PER SECTION 1609 OF THE ABOVE MENTIONED CODE, FOR A WIND SPEED AS REQUIRED BY THE JURISDICTION WHERE THESE SHUTTERS WILL BE INSTALLED AND FOR A DIRECTIONALITY FACTOR  $K_d=0.85$ . USING ASCE 7-10 FOR INSTALLATIONS UNDER 2010 FBC AND SHALL NOT EXCEED THE MAXIMUM (A.S.D.) DESIGN PRESSURE RATINGS INDICATED ON SHEETS 3, 9 THRU 12, 15, 16 & 18.
- IN ORDER TO VERIFY THE ABOVE CONDITION, ULTIMATE DESIGN WIND LOADS DETERMINED PER ASCE 7-10 SHALL BE FIRST REDUCED TO A.S.D. DESIGN WIND LOADS BY MULTIPLYING THEM BY 0.6 IN ORDER TO TO COMPARE THESE W/ MAX. (A.S.D) DESIGN PRESSURE RATINGS INDICATED ON SHEETS 3, 9 THRU 12, 15, 16 & 18.
- IN ORDER TO VERIFY THAT ANCHORS ON THIS P.E.D. AS TESTED WERE NOT OVER STRESSED, A 33% INCREASE IN ALLOWABLE STRESS FOR WIND LOADS WAS NOT USED IN THEIR ANALYSIS. FASTENERS SPACING TO WOOD HAS BEEN DETERMINED IN ACCORDANCE WITH N.D.S. 2005.
- STORM PANEL'S ADEQUACY FOR IMPACT AND WIND RESISTANCE HAS BEEN VERIFIED IN ACCORDANCE WITH SECTION 1609.1.2 OF THE ABOVE MENTIONED CODE AS PER AMERICAN TEST LAB OF SOUTH FLORIDA REPORTS #0814.01-01 AND #0219.02-09, AS PER SSTD 12-99 & ASTM E 330-02 STANDARDS.
2. ALL ALUMINUM EXTRUSIONS TO BE 6063-T6 ALLOY AND TEMPER. (UNLESS OTHERWISE NOTED). SEE SHEET 2
3. ALL ALUMINUM SHEET METAL USED AT CLOSURES SHALL HAVE 3105-H14 ALLOY.
4. ALL STEEL SHEET METAL PANELS SHALL HAVE STRUCTURAL QUALITY STEEL, ASTM A-653 GRADE 80 MINIMUM, G-60 GALVANIZED STEEL DESIGNATION W/FY= 92.2 ksi (AFTER ROLLED).
5. ALL SCREWS TO BE STAINLESS STEEL 304 OR 316 AISI SERIES OR CORROSION RESISTANT COATED CARBON STEEL AS PER DIN 50018 W/ 50 ksi YIELD STRENGTH AND 90 ksi TENSILE STRENGTH & SHALL COMPLY W/ FLORIDA BUILDING CODE SECTION 2411.3.3.4.
6. BOLTS TO BE ASTM A-307 GALVANIZED STEEL, OR AISI 304 SERIES STAINLESS STEEL, WITH 36 ksi MINIMUM YIELD STRENGTH.
7. ANCHORS TO WALL SHALL BE AS FOLLOWS:

(A) TO EXISTING POURED CONCRETE:

- 1/4"Ø TAPCON ANCHORS AS MANUFACTURED BY I.T.W. BUILDEX, INC. (Min.  $f'c=3192$  p.s.i.)
- 1/4" Ø x 7/8" CALK-IN ANCHORS, AS MANUFACTURED BY POWERS FASTENERS INC.
- 1/4"Ø x 3/4" SOLID-SET ANCHORS, AS DISTRIBUTED BY ALL POINT SCREW, BOLT & SPECIALTY CO. (Min.  $f'c=3000$  p.s.i.)
- #14-10 PANELMATE FEMALE ID & PANELMATE PLUS ANCHORS, AS MANUFACTURED BY ELCO CONSTRUCTION PRODUCTS.
- 1/4"Ø ZAMAC NAILIN ANCHORS, AS MANUFACTURED BY POWERS FASTENERS, INC.

- A.1) MINIMUM EMBEDMENT OF TAPCON ANCHORS INTO POURED CONCRETE SHALL BE 1 3/4"; 2" FOR ELCO PANELMATE AND 1 3/4" FOR ZAMAC NAILIN ANCHORS.
- A.2) CALK-IN & SOLID-SET ANCHORS SHALL BE EMBEDDED 7/8" INTO THE POURED CONCRETE. NO EMBEDMENT INTO STUCCO SHALL BE PERMITTED. 1/4" Ø-20 SCREWS USED SHALL BE 1 1/2" LONG MINIMUM SHOULD STUCCO EXIST, AND 1" MINIMUM FOR WALLS WITH NO STUCCO, AND MAY BE HEADED SCREWS OR ALL THREADED SCREWS W/O HEAD, BUT WITH WING NUTS.
- A.3) IN CASE THAT PRECAST STONE, PRECAST CONCRETE PANELS, PAVERS, STUCCO OR WOOD BOARDS BE FOUND ON THE EXISTING WALL OR FLOOR, ANCHORS SHALL BE LONG ENOUGH TO REACH THE MAIN STRUCTURE BEHIND SUCH PANELS. ANCHORAGE SHALL BE AS MENTIONED IN A.1) AND IN A.2).

(B) TO EXISTING CONCRETE BLOCK WALL ASTM C-90:

- 1/4" Ø TAPCON ANCHORS AS MANUFACTURED BY I. T. W. BUILDEX, INC.
  - 1/4" Ø x 7/8" CALK-IN ANCHORS, AS MANUFACTURED BY POWERS FASTENERS INC.
  - 1/4"Ø X 3/4" SOLID-SET ANCHORS, AS DISTRIBUTED BY ALL POINT SCREW, BOLT & SPECIALTY CO.
  - #14-10 PANELMATE FEMALE ID AND PANELMATE PLUS ANCHORS, AS MANUFACTURED BY ELCO CONSTRUCTION PRODUCTS.
  - 1/4" Ø ZAMAC NAILIN ANCHORS, AS MANUFACTURED BY POWERS FASTENERS, INC.
- B.1) MINIMUM EMBEDMENT OF TAPCON ANCHORS, ELCO PANELMATES AND ZAMAC NAILIN ANCHOR, INTO THE CONCRETE BLOCK UNIT SHALL BE 1 1/4".
- B.2) CALK-IN & SOLID-SET ANCHORS SHALL BE EMBEDDED 7/8" INTO THE CONCRETE BLOCK UNIT. NO EMBEDMENT INTO STUCCO SHALL BE PERMITTED. 1/4" Ø-20 SCREWS USED SHALL BE 1 1/2" LONG MINIMUM SHOULD STUCCO EXIST, AND 1" MINIMUM FOR WALLS WITH NO STUCCO.
- B.3) IN CASE THAT PRECAST STONE, OR PRECAST CONCRETE PANELS, STUCCO OR WOOD BOARDS BE FOUND ON THE EXISTING WALL, ANCHORS SHALL BE LONG ENOUGH TO REACH THE MAIN STRUCTURE BEHIND SUCH PANELS. ANCHORAGE SHALL BE AS MENTIONED IN B.1) AND IN B.2).

- (C) TO EXISTING WOOD (MIN. SPECIFIC GRAVITY,  $G = 0.55$  MIN.):
- 1/4"Ø TAPCON ANCHORS, AS MANUFACTURED BY I.T.W. BUILDEX, INC.
  - #14-10 PANELMATE FEMALE ID AND PANELMATE PLUS ANCHORS, AS MANUFACTURED BY ELCO CONSTRUCTION PRODUCTS.
  - 1/4"Ø LAG SCREWS PER N.D.S.
  - 7/16"Ø x 5/8" WOOD BUSHING, AS DISTRIBUTED BY ALL POINT SCREW, BOLT & SPECIALTY CO.
- C.1) MINIMUM THREADED PENETRATION INTO WOOD OF TAPCON ANCHORS SHALL BE 1 1/2" AND 2" FOR ELCO PANELMATE PLUS AND PANELMALE FEMALE ID.
- C.2) MINIMUM THREADED PENETRATION OF LAG SCREW, INTO THE WOOD FRAME UNIT SHALL BE 1 1/2". NO THREADED PENETRATION INTO STUCCO SHALL BE CONSIDERED AS PART OF THE REQUIRED THREADED PENETRATION.
- C.3) MINIMUM EDGE DISTANCE OF LAG SCREWS, INTO WOOD SHALL BE AS INDICATED IN THIS DRAWING
- C.4) MINIMUM PENETRATION OF WOOD BUSHING SHALL BE 5/8". 1/4" Ø-20 SCREWS USED SHALL BE 1 1/2" LONG MINIMUM SHOULD STUCCO EXIST, AND 1" MINIMUM FOR WALLS WITH NO STUCCO.
- C.5) IN CASE THAT PRECAST STONE, OR PRECAST CONCRETE PANELS, STUCCO OR WOOD BOARDS BE FOUND ON THE EXISTING WALL, ANCHORS SHALL BE LONG ENOUGH TO REACH THE MAIN STRUCTURE BEHIND SUCH PANELS. ANCHORAGE SHALL BE AS MENTIONED IN C.1), C.2) & C.4)
- (D) ANCHORS SHALL BE INSTALLED FOLLOWING ALL OF THE RECOMMENDATIONS AND SPECIFICATIONS OF THE ANCHOR'S MANUFACTURER.
8. PANELS MAY ALSO BE INSTALLED HORIZONTALLY FOLLOWING INSTALLATION DETAILS SHOWN ON SECTION 1 THROUGH 6 (SHEETS 4 THROUGH 5) EXCEPT THAT HEADERS ② & ③ SHALL NOT BE USED.
9. IT SHALL BE THE RESPONSIBILITY OF THE CONTRACTOR TO VERIFY THE SOUNDNESS OF THE STRUCTURE WHERE SHUTTER IS TO BE ATTACHED TO INSURE PROPER ANCHORAGE. THIS SHUTTER SHALL ONLY BE ATTACHED TO CONCRETE, BLOCK OR WOOD FRAME BUILDINGS.
10. EACH REGULAR STORM PANEL WITH LENGTHS OVER 90", AS PER SECTIONS 1, 2, 4, 5, 6 AND ALTERNATIVES 1W, 3W & 4W ON SHEETS 4, 5, 6 & 7 RESPECTIVELY; SHALL HAVE A LEGIBLE AND READILY VISIBLE MARKING INSTRUCTING OWNER OR TENANT TO SECURE PANELS WITH APPLICABLE REINFORCEMENT DURING PERIODS OF HURRICANE WARNING.
11. THE INSTALLATION CONTRACTOR IS TO SEAL/CAULK ALL SHUTTER COMPONENT EDGES WHICH REMAIN IN CONTINUOUS CONTACT WITH THE BUILDING TO PREVENT WIND/RAIN INTRUSION.
12. STORM PANEL INSTALLATION SHALL COMPLY WITH SPECS INDICATED IN THIS DRAWING PLUS ANY BUILDING AND ZONING REGULATIONS PROVIDED BY THE JURISDICTION WHERE PERMIT IS APPLIED TO.
13. (a) THIS PRODUCT EVALUATION DOCUMENT (P.E.D.) PREPARED BY THIS ENGINEER IS GENERIC AND DOES NOT PROVIDE INFORMATION FOR A SITE SPECIFIC PROJECT; i.e. WHERE THE SITE CONDITIONS DEVIATE FROM THE P.A.D.
- (b) CONTRACTOR TO BE RESPONSIBLE FOR THE SELECTION, PURCHASE AND INSTALLATION INCLUDING LIFE SAFETY OF THIS PRODUCT BASED ON THIS P.E.D. PROVIDED HE/SHE DOES NOT DEVIATE FROM THE CONDITIONS DETAILED ON THIS DOCUMENT. CONSTRUCTION SAFETY AT SITE IS THE CONTRACTOR'S RESPONSIBILITY.
- (c) THIS PRODUCT EVALUATION DOCUMENT WILL BE CONSIDERED INVALID IF MODIFIED.
- (d) SITE SPECIFIC PROJECTS SHALL BE PREPARED BY A FLORIDA REGISTERED ENGINEER OR ARCHITECT WHICH WILL BECOME THE ENGINEER OF RECORD (E.O.R.) FOR THE PROJECT AND WHO WILL BE RESPONSIBLE FOR THE PROPER USE OF THE P.E.D. ENGINEER OF RECORD, ACTING AS A DELEGATED ENGINEER TO THE P.E.D. ENGINEER, SHALL SUBMIT TO THIS LATTER THE SITE SPECIFIC DRAWINGS FOR REVIEW.
- (e) THIS P.E.D. SHALL BEAR THE DATE AND ORIGINAL SEAL AND SIGNATURE OF THE PROFESSIONAL ENGINEER OF RECORD THAT PREPARED IT.
14. SHUTTER MANUFACTURER'S LABEL SHALL BE LOCATED ON A READILY VISIBLE LOCATION AT STORM PANEL SHUTTER IN ACCORDANCE WITH SECTION 1715.8.3 OF FLORIDA BUILDING CODE. ONE LABEL SHALL BE PLACED FOR EVERY OPENING. LABELING TO COMPLY WITH SECTION 1715.8.2 OF THE FLORIDA BUILDING CODE.

WALTER A. TILLIT JR.

LICENSE

No. 44167

12/05/11

STATE OF FLORIDA

PROFESSIONAL ENGINEER

SEAL AND SIGNATURE/DATE

© 2011 TILTECO, INC.

TILTECO INC.

TILLIT TESTING & ENGINEERING COMPANY  
6355 N.W. 36th. St., Ste. 305, VIRGINIA GARDENS, FL 33166  
Phone : (305) 871-1530 . Fax : (305) 871-1531  
EB-0006719  
WALTER A. TILLIT Jr., P.E.  
FLORIDA Lic. # 44167

FLORIDA BUILDING CODE (Non High Velocity Hurricane Zone)

24 GAGE GALVANIZED STEEL STORM PANEL

GLOBAL PROTECTION PRODUCTS, LLC.  
4800 S.W. 51 STREET  
DAVIE, FL. 33314  
PHONE: (954)689-7545, FAX: (954)689-8797

REV. No	DESCRIPTION	DATE	REV. No	DESCRIPTION	DATE
1	OLD 08-238	12/05/11	3	-	-
2	-	-	4	-	-

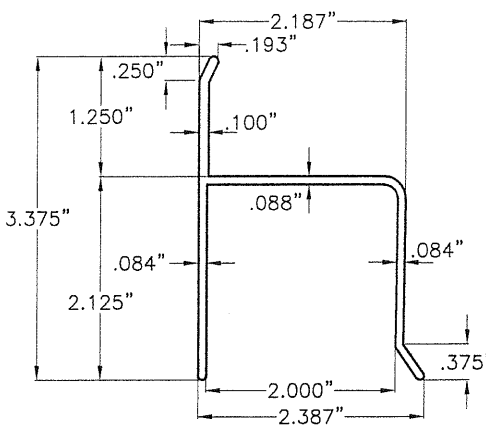
I.A./M.C.V.  
R.E./A.G.  
DRAWN BY:

12/05/11  
DATE:

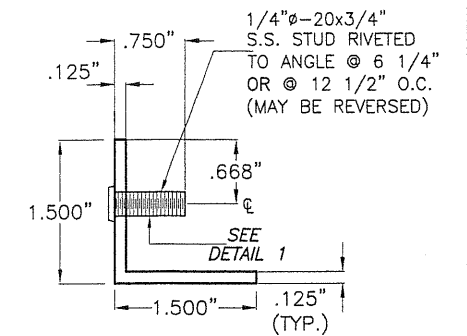
11-214  
DRAWING No:

SHEET 1 OF 18

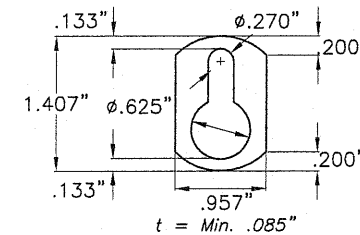
(SCALE 1/2"=1')



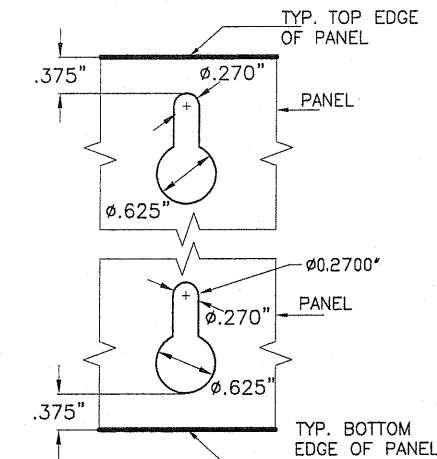
③ "F" TRACK



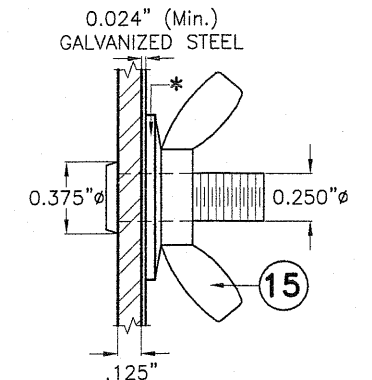
#### ④ ANGLE WITH STUD



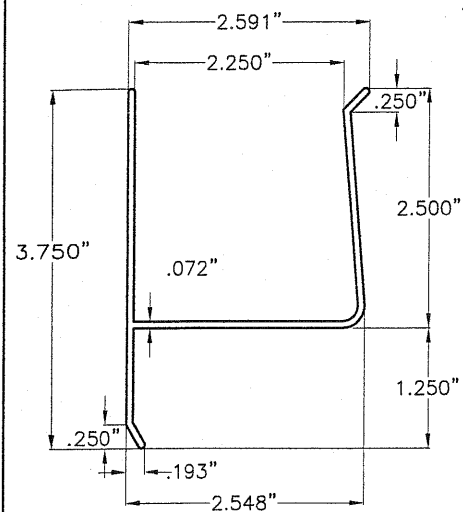
5 KEY HOLE WASHER  
3105-H154 ALUM. ALLOY



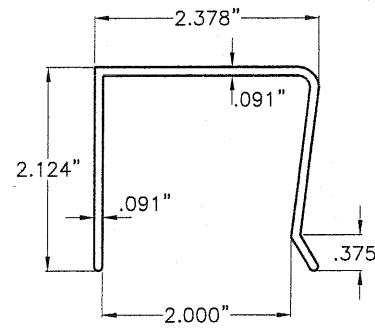
⑥ KEY HOLE AT PANEL  
3105-H154 ALUM. ALLOY



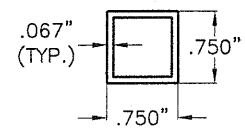
DETAIL 1



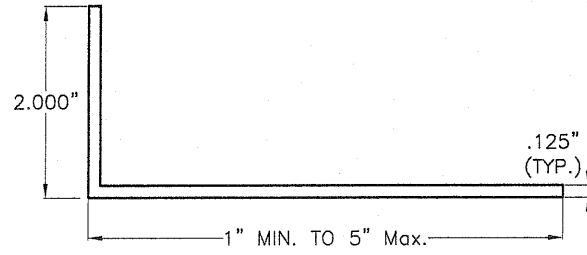
⑦ REV. "H" HEADER



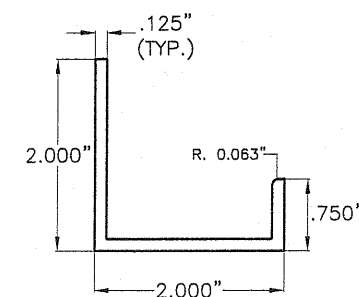
⑧ "U" HEADER



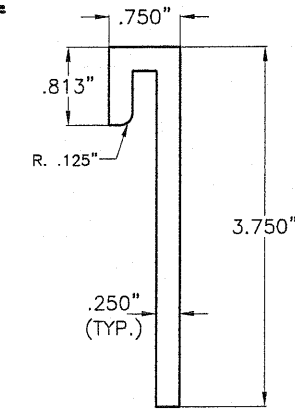
⑨ SLEEVE 2 1/8"  
MAX. LENGTH



10 ANGLE



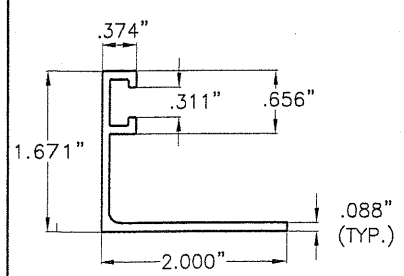
11 "J" TRACK



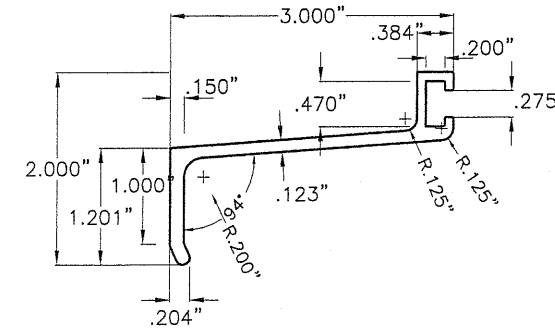
12 PANEL HANGER  
(1 1/4" WIDE)

(USE ONLY FOR E-Z HANG STORM PANEL  
SYSTEM) 6063-T6 ALUM. ALLOY

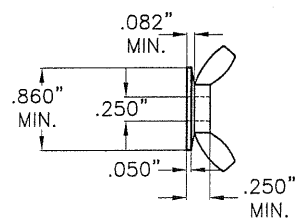
FLORIDA BUILDING CODE (Non High Velocity Hurricane Zone)



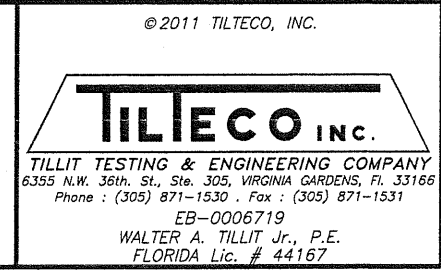
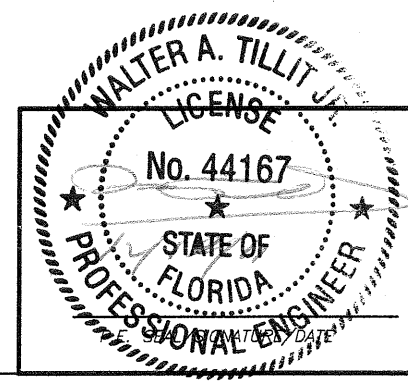
### 13 BUILD-OUT "F" TRACK ANGLE



14 BUILD-OUT "F" TRACK



15 WASHERED WINGNUT  
(ZAMAC 3 ALLOY)



24 GAGE GALVANIZED STEEL STORM PANEL						I.A./M.C.V. R.E./A.G. DRAWN BY:	
GLOBAL PROTECTION PRODUCTS, LLC.  4800 S.W. 51 STREET DAVIE, FL. 33314  PHONE: (954)689-7545, FAX: (954)689-8797						12/05/11 DATE:	
						11-214 DRAWING No:	
REV. No	DESCRIPTION	DATE	REV. No	DESCRIPTION	DATE	SHEET 2 OF 18	
1	OLD 08-23B	12/05/11	3	-	-		
2	-	-	4	-	-		

MAXIMUM A.S.D. DESIGN PRESSURE RATING (p.s.f.) AND CORRESPONDING  
MAXIMUM SINGLE PANEL ① LENGTH "L" SCHEDULE ONLY FOR REGULAR STORM  
PANELS INSTALLATION INTO POURED CONCRETE, CONCRETE BLOCK & WOOD (†)

SINGLE PANELS ① UNRESTRAINED  
AT TOP OR BOTTOM  
WITH TRACKS ② OR ⑧ \*

MAXIMUM A.S.D. DESIGN PRESSURE RATING (p.s.f.) (+ or -)	CONCRETE & WOOD INSTALLATIONS †	
	L+	L-
20.0	12'-0"	12'-0"
25.0	12'-0"	11'-8"
30.0	11'-8"	10'-9"
35.0	10'-10"	10'-0"
40.0	10'-1"	9'-4"
45.0	9'-6"	8'-9"
50.0	9'-1"	8'-4"
55.0	8'-7"	8'-0"
60.0	8'-3"	7'-7"
65.0	8'-0"	7'-4"
70.0	7'-8"	7'-0"
75.0	7'-5"	6'-10"
80.0	7'-2"	6'-7"
85.0	7'-0"	6'-5"
90.0	6'-9"	6'-2"
95.0	6'-9"	6'-0"
100.0	6'-5"	5'-11"
105.0	6'-3"	5'-9"
110.0	-	5'-7"
115.0	-	5'-6"
119.6	-	5'-5"

SINGLE PANELS ① RESTRAINED AT EACH  
END WITH TRACKS ③, ④, ⑬ & ⑭  
OR DIRECT MOUNTED AT EACH END

MAXIMUM A.S.D. DESIGN PRESSURE RATING (p.s.f.) (+ or -)	CONCRETE & WOOD INSTALLATIONS †	
	L+	L-
20.0	14'-4"	13'-0"
25.0	12'-10"	11'-7"
30.0	11'-8"	10'-7"
35.0	10'-10"	9'-9"
40.0	9'-6"	9'-2"
45.0	9'-1"	8'-7"
50.0	8'-7"	8'-2"
55.0	8'-3"	7'-9"
60.0	8'-0"	7'-5"
65.0	7'-8"	7'-2"
70.0	7'-5"	6'-11"
75.0	7'-2"	6'-8"
80.0	7'-0"	6'-5"
85.0	7'-0"	6'-3"
90.0	6'-9"	6'-1"
95.0	6'-7"	5'-10"
100.0	6'-3"	5'-7"
105.0	6'-3"	5'-4"
110.0	-	5'-1"
115.0	-	4'-10"
119.6	-	4'-8"

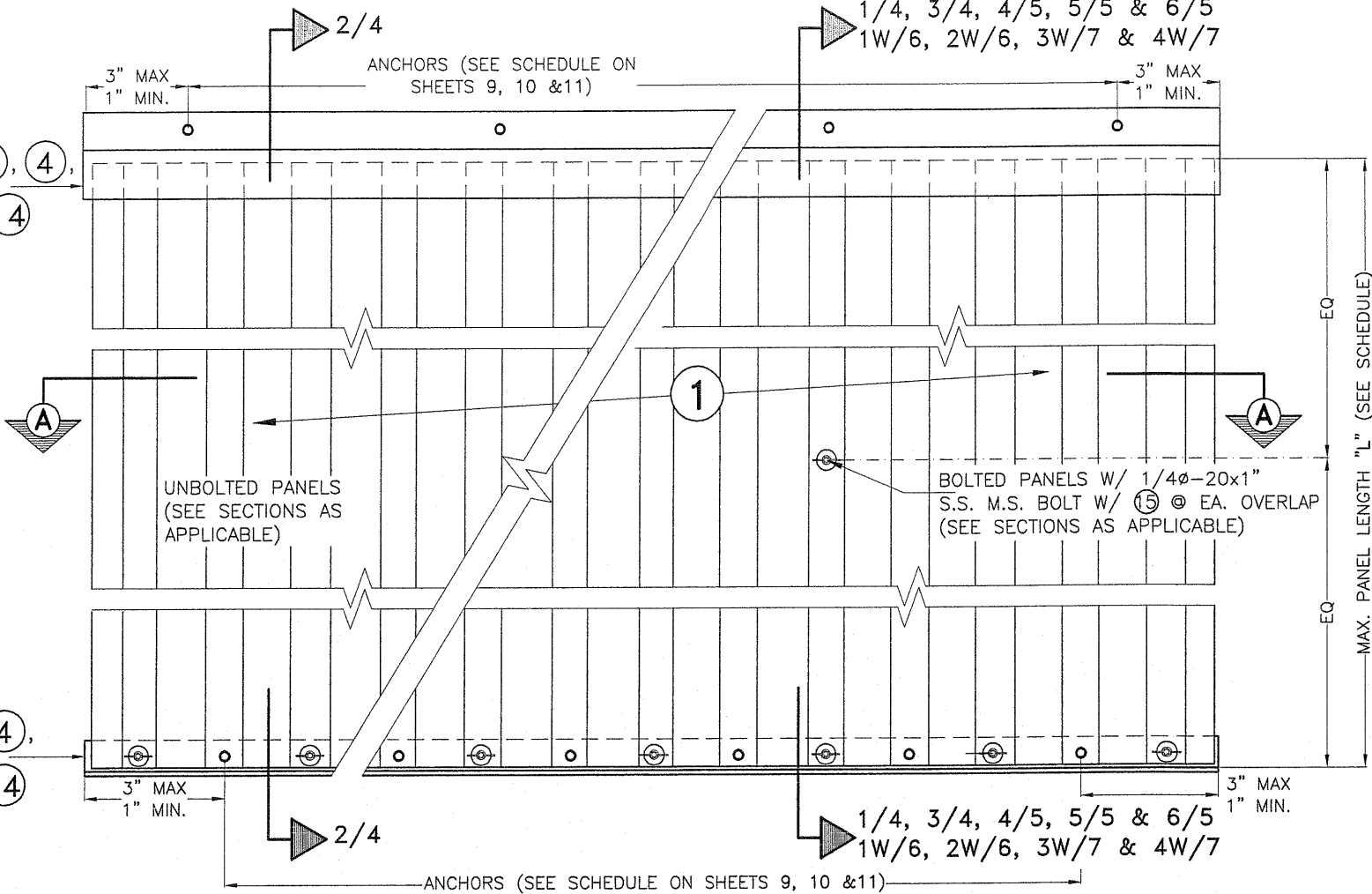
MAXIMUM PANEL LENGTH (in)	MINIMUM SEPARATION TO GLASS SCHEDULE			
	ULTIMATE WIND SPEED < 175 m.p.h		ULTIMATE WIND SPEED > 175 m.p.h	
	UNRESTRAINED	RESTRAINED	UNRESTRAINED	RESTRAINED
30 OR LESS	1"	1"	6"	6 1/4"
>33 TO 90	1"	1"	7 1/2"	7 1/2"
>90 TO 145	1"	1"	7 1/2"	7 1/2"
>145 TO 168.35	1"	1"	-	7 1/2"

MINIMUM PANEL LENGTH (in) FOR A GIVEN MOUNTING CONDITION

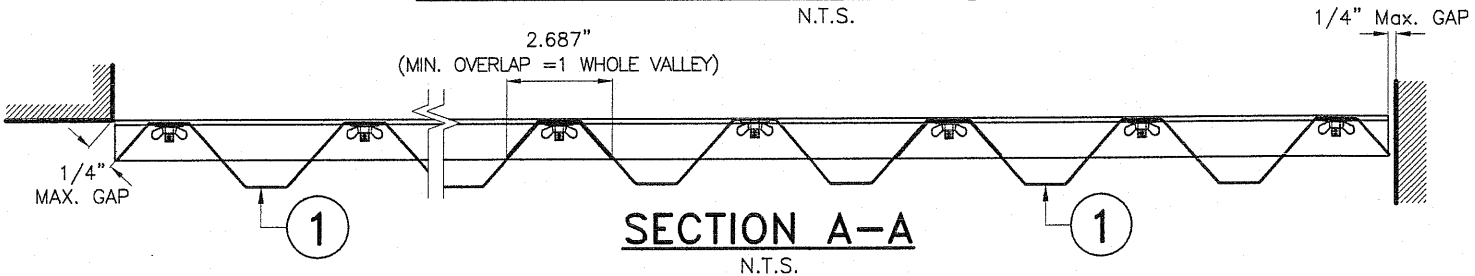
BOTTOM	TOP	DIRECT MOUNT	"h" HEADER	"u" HEADER	1.5"x1.5" STUD ANGLE	"F" TRACK	BUILD-OUT "F" TRACK ANGLE W/SIDE CLOSURES	BUILD-OUT "F" TRACK W/SIDE CLOSURES
-	DIRECT MOUNT	46"	32"	32"	35"	55"	50"	50"
④	1.5"x1.5" STUD ANGLE	35"	32"	32"	32"	42"	38"	38"
③	"F" TRACK	55"	32"	32"	42"	67"	60"	60"
⑬	BUILD-OUT "F" TRACK ANGLE W/ SIDE CLOSURES	50"	32"	32"	38"	60"	56"	56"
⑭	BUILD-OUT "F" TRACK W/ SIDE CLOSURES	50"	32"	32"	38"	60"	56"	56"

D.M., ②, ③, ④,  
⑧, ⑬ or ⑭

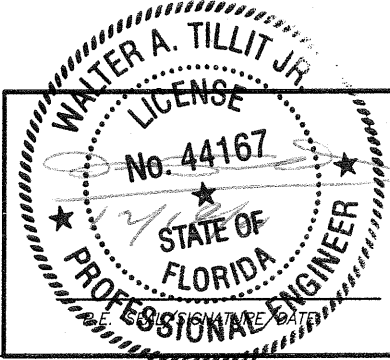
D.M., ③, ④,  
⑬ or ⑭



REGULAR STORM PANEL ① ELEVATION



- NOTES:
- ① L+: MAXIMUM ALLOWABLE PANEL LENGTH FOR A GIVEN POSITIVE A.S.D. DESIGN LOAD.  
L-: MAX. ALLOWABLE PANEL LENGTH FOR A GIVEN NEGATIVE A.S.D. DESIGN LOAD.
  - ② PROCEDURE TO DETERMINE MAXIMUM PANEL LENGTH:  
GIVEN A POSITIVE A.S.D. DESIGN LOAD, DETERMINE MAXIMUM PANEL LENGTH "L+" FROM SCHEDULE.  
GIVEN A NEGATIVE A.S.D. DESIGN LOAD, DETERMINE MAXIMUM PANEL LENGTH "L-" FROM SCHEDULE.  
FINAL MAXIMUM ALLOWABLE PANEL LENGTH IS EQUAL TO THE MINIMUM DETERMINED PANEL LENGTH BETWEEN "L+" AND "L-".
  - ③ SEE SCHEDULE BELOW FOR MIN. PANEL LENGTH FOR POROSITY QUALIFICATION.
- † INSTALLATIONS INTO WOOD ARE LIMITED TO ± 95 p.s.f. MAX. A.S.D. DESIGN PRESSURE RATING



FLORIDA BUILDING CODE (Non High Velocity Hurricane Zone)

24 GAGE GALVANIZED STEEL STORM PANEL

GLOBAL PROTECTION PRODUCTS, LLC.

4800 S.W. 51 STREET  
DAVIE, FL. 33314  
PHONE: (954)689-7545, FAX: (954)689-8797

REV. No. 1 DESCRIPTION OLD 08-238 DATE 12/05/11  
REV. No. 2 DESCRIPTION - DATE -

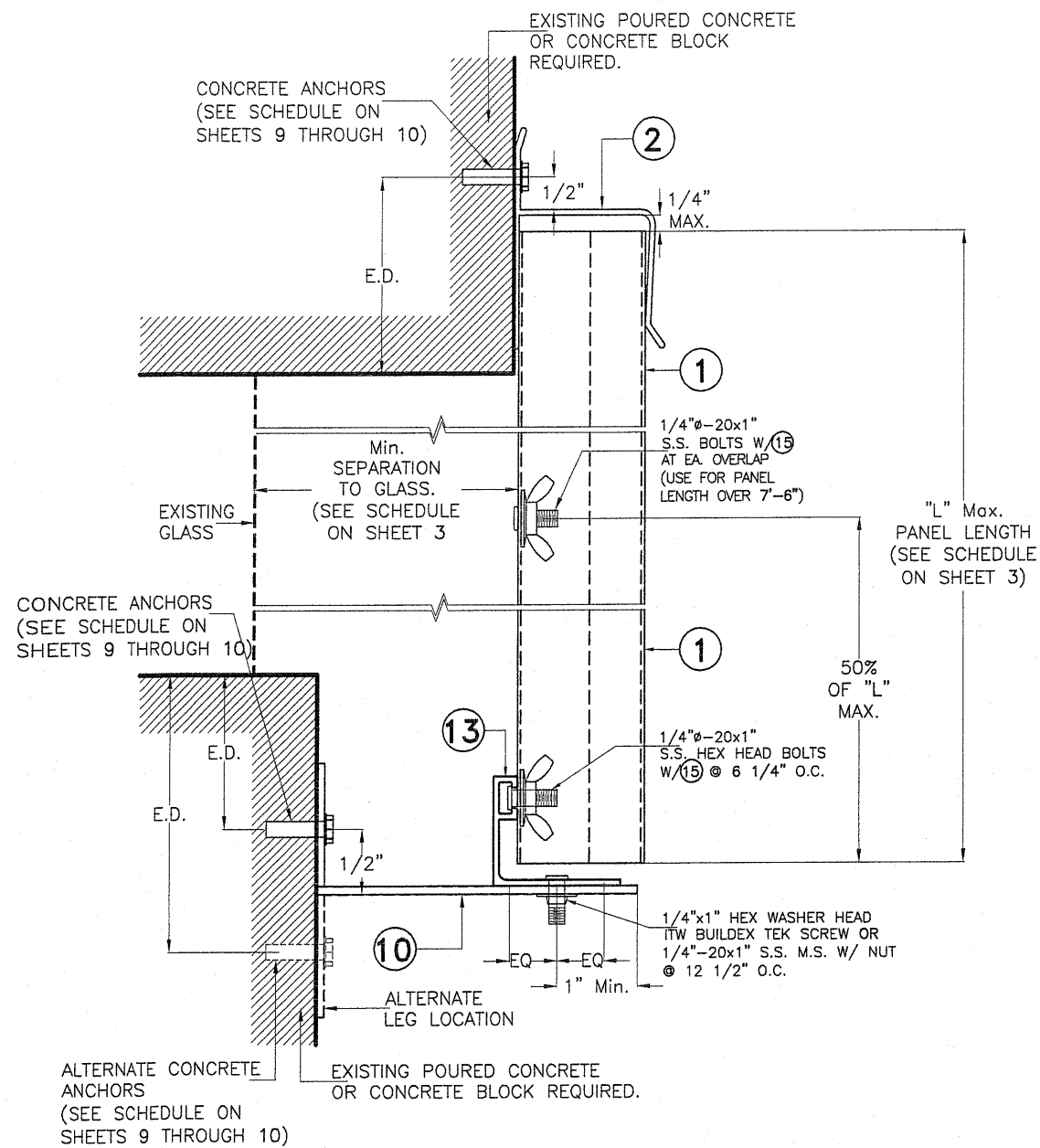
12/05/11  
DATE:  
11-214  
DRAWING No:  
SHEET 3 OF 18

© 2011 TILTECO, INC.

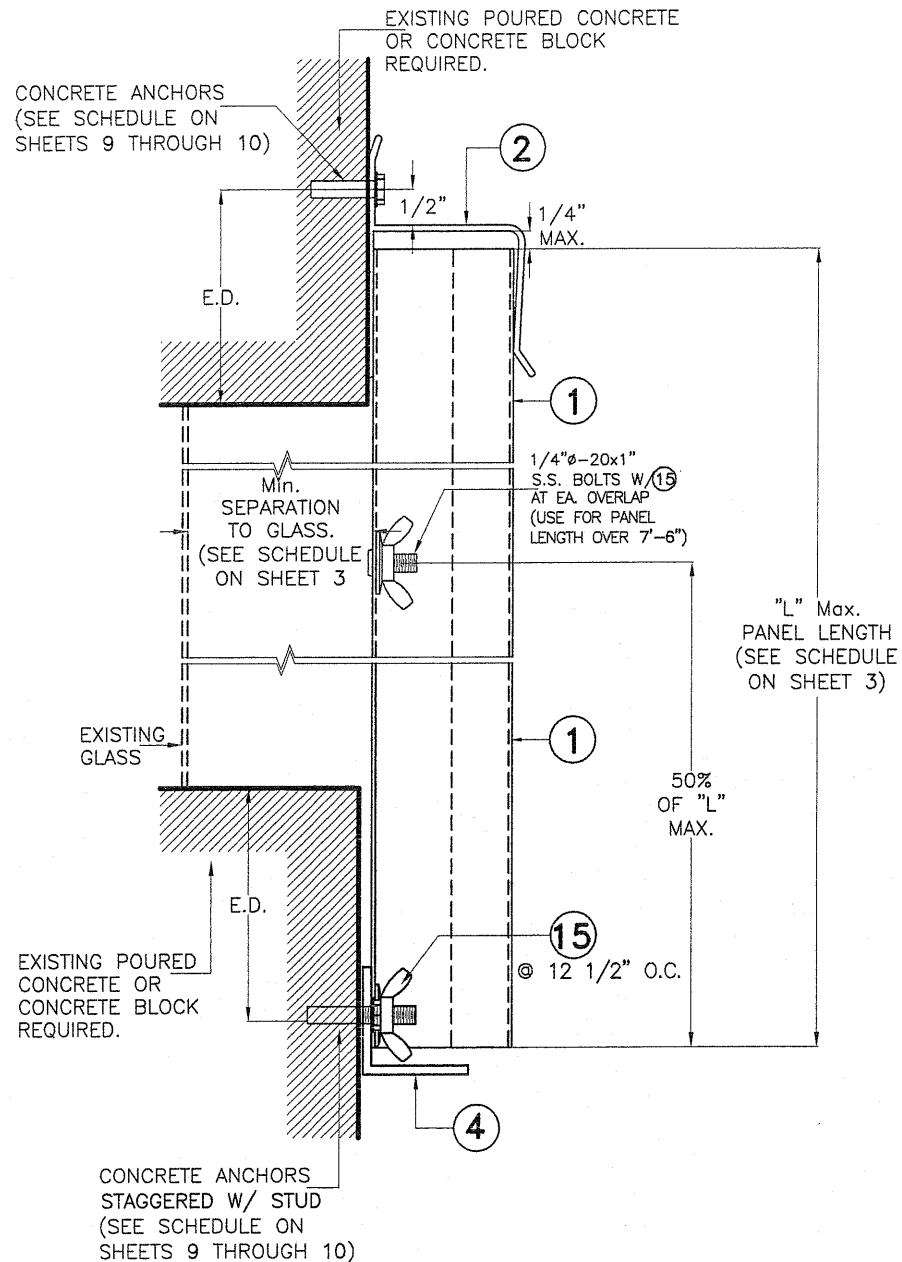
TILTECO INC.

TILLIT TESTING & ENGINEERING COMPANY  
6355 N.W. 36th. St., Ste. 305, VIRGINIA GARDENS, FL 33166  
Phone : (305) 871-1530 . Fax : (305) 871-1531  
EB-0006719  
WALTER A. TILLIT Jr., P.E.  
FLORIDA Lic. # 44167

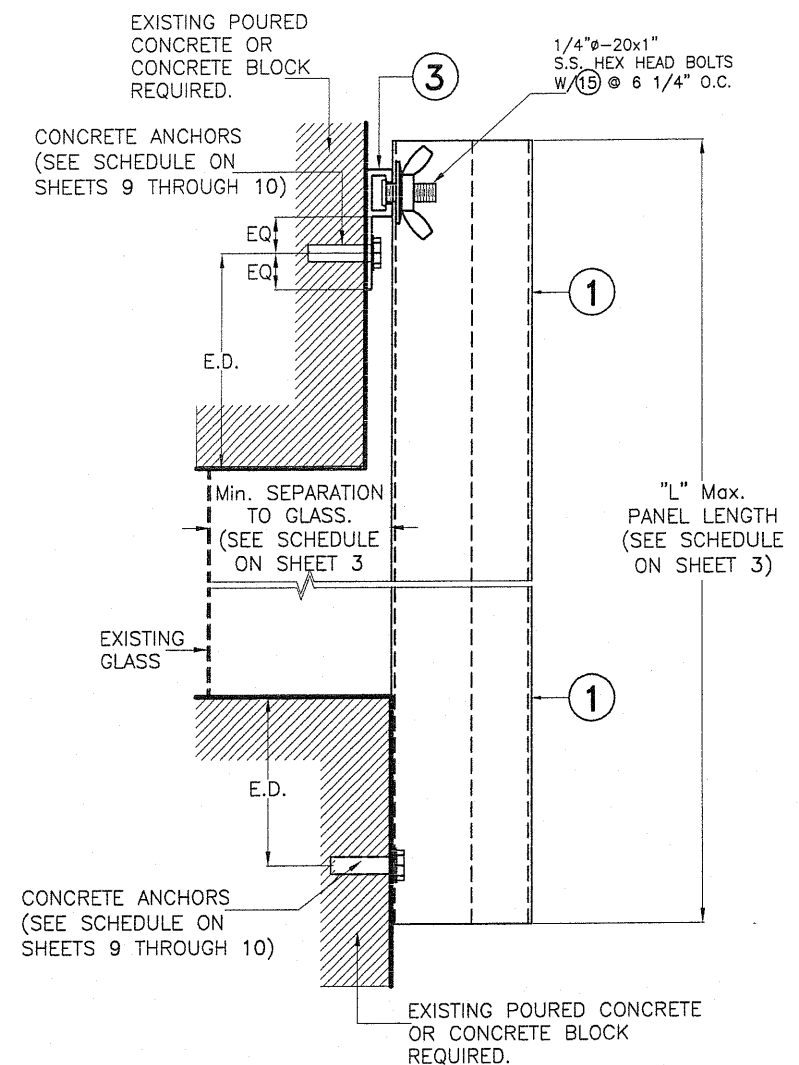
# INSTALLATION DETAILS FOR REGULAR PANEL ① INTO POURED CONCRETE OR CONCRETE BLOCK STRUCTURES



**BUILD-OUT MOUNTING  
SECTION 1**  
SCALE 3/8=1"



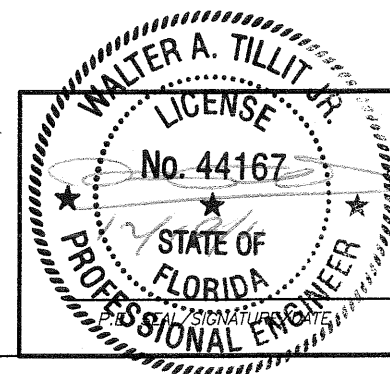
**WALL MOUNTING  
SECTION 2**  
SCALE 3/8=1"



**WALL MOUNTING / DIRECT MOUNT  
SECTION 3**  
SCALE 3/8=1"

E.D. = EDGE DISTANCE  
(SEE SCHEDULE ON  
SHEETS 9 & 10)

NOTE FOR COMBINATION OF SECTIONS:  
TOP & BOTTOM MOUNTINGS CAN BE  
COMBINED IN ANY WAY TO SUIT ANY  
INSTALLATION.



© 2011 TILTECO, INC.

**TILTECO INC.**

TILLIT TESTING & ENGINEERING COMPANY  
6355 N.W. 36th. St., Ste. 305, VIRGINIA GARDENS, FL 33166  
Phone : (305) 871-1530 . Fax : (305) 871-1531

EB-0006719  
WALTER A. TILLIT Jr., P.E.  
FLORIDA Lic. # 44167

FLORIDA BUILDING CODE (Non High Velocity Hurricane Zone)

24 GAGE GALVANIZED STEEL STORM PANEL

GLOBAL PROTECTION PRODUCTS, LLC.

4800 S.W. 51 STREET  
DAVIE, FL. 33314  
PHONE: (954)689-7545, FAX: (954)689-8797

I.A./M.C.V.  
R.E./A.G.  
DRAWN BY:

12/05/11  
DATE:

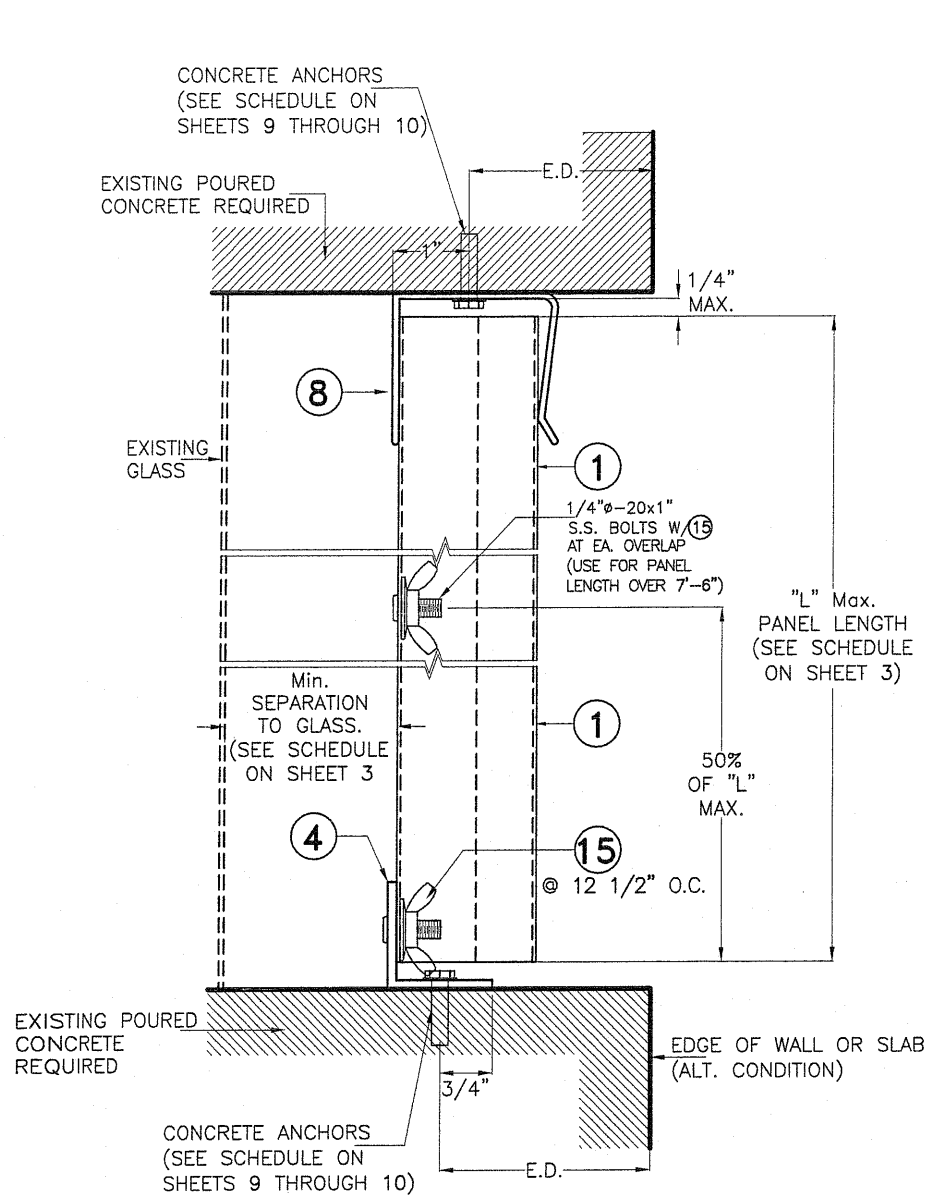
11-214

DRAWING No:

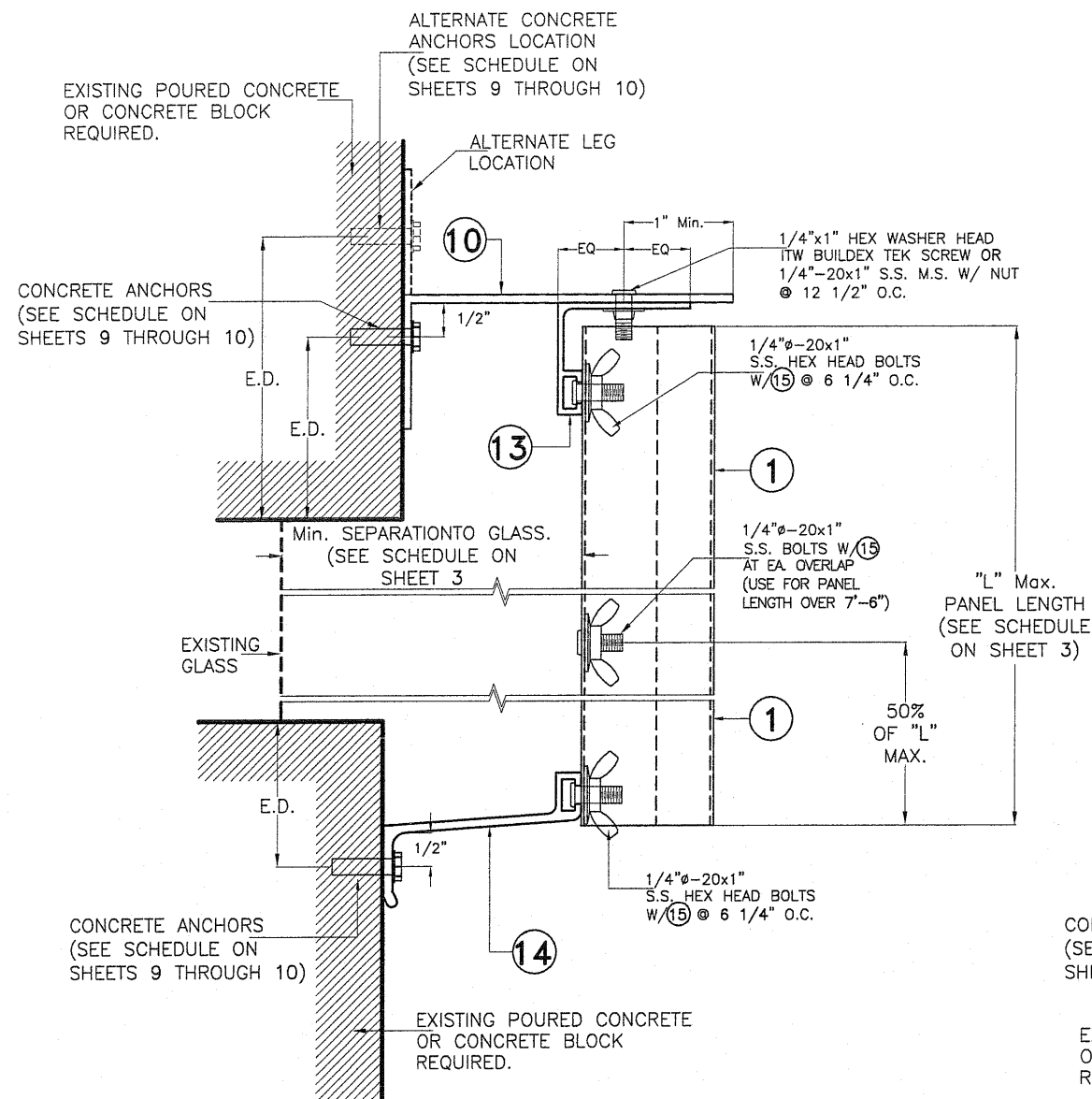
REV. No	DESCRIPTION	DATE	REV. No	DESCRIPTION	DATE
1	OLD 08-238	12/05/11	3	-	-
2	-	-	4	-	-

SHEET 4 OF 18

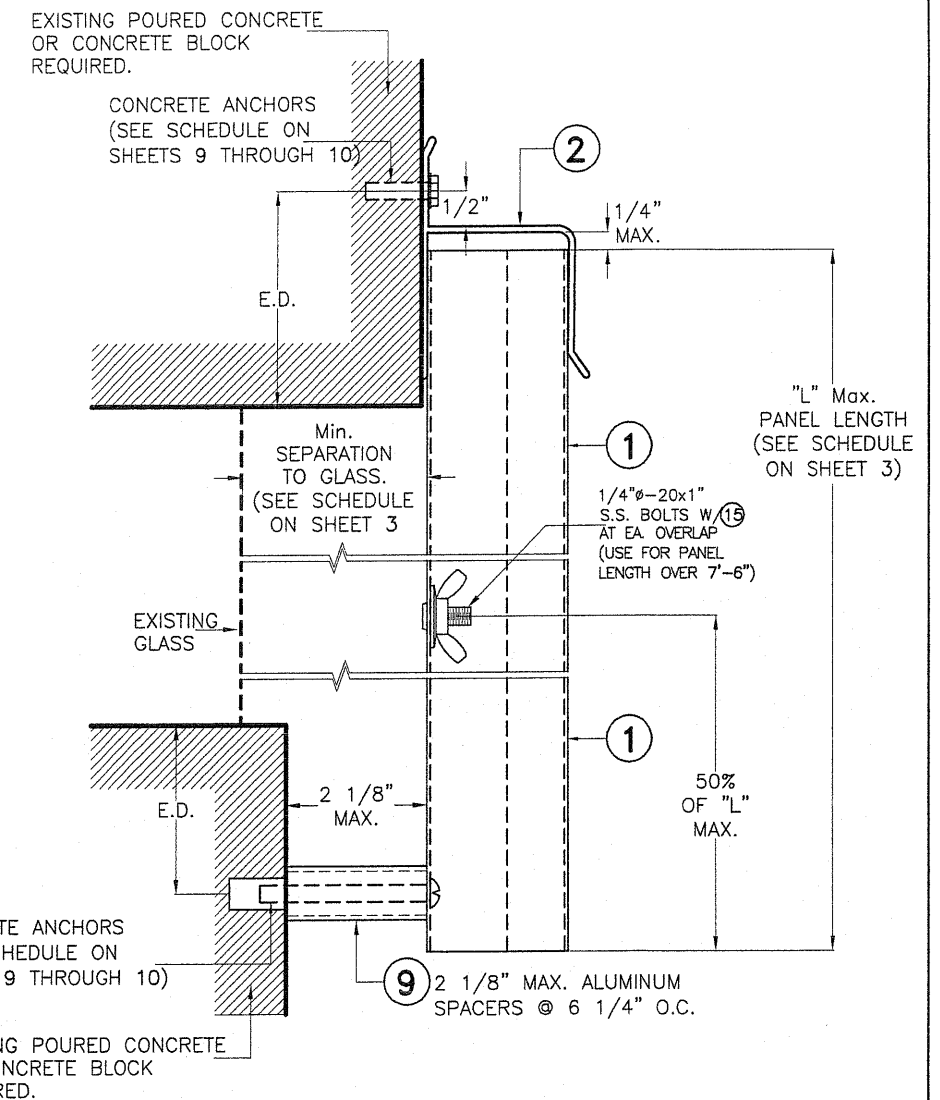
# **INSTALLATION DETAILS FOR REGULAR PANEL ① INTO POURED CONCRETE OR CONCRETE BLOCK STRUCTURES**



**CEILING AND FLOOR MOUNTING  
SECTION 4**  
SCALE 3/8=1"



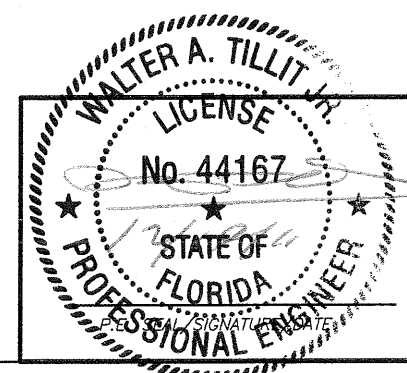
**BUILD-OUT MOUNTING  
SECTION 5**  
SCALE 3/8=1"



**WALL MOUNTING /DIRECT MOUNT W/SPACER  
SECTION 6**  
SCALE 3/8=1"

E.D. = EDGE DISTANCE  
(SEE SCHEDULE ON  
SHEETS 9 & 10)

**NOTE FOR COMBINATION OF SECTIONS:**  
TOP & BOTTOM MOUNTINGS CAN BE  
COMBINED IN ANY WAY TO SUIT ANY  
INSTALLATION.



©2011 TILTECO, INC.  
**TILTECO INC.**  
TILLIT TESTING & ENGINEERING COMPANY  
6355 N.W. 36th. St., Ste. 305, VIRGINIA GARDENS, FL 33166  
Phone : (305) 871-1530 . Fax : (305) 871-1531  
EB-0006719  
WALTER A. TILLIT Jr., P.E.  
FLORIDA Lic. # 44167

FLORIDA BUILDING CODE (Non High Velocity Hurricane Zone)

24 GAGE GALVANIZED STEEL STORM PANEL

**GLOBAL PROTECTION PRODUCTS, LLC.**

4800 S.W. 51 STREET  
DAVIE, FL. 33314  
PHONE: (954)689-7545, FAX: (954)689-8797

I.A./M.C.V.  
R.E./A.G.  
DRAWN BY:

12/05/11  
DATE:

11-214

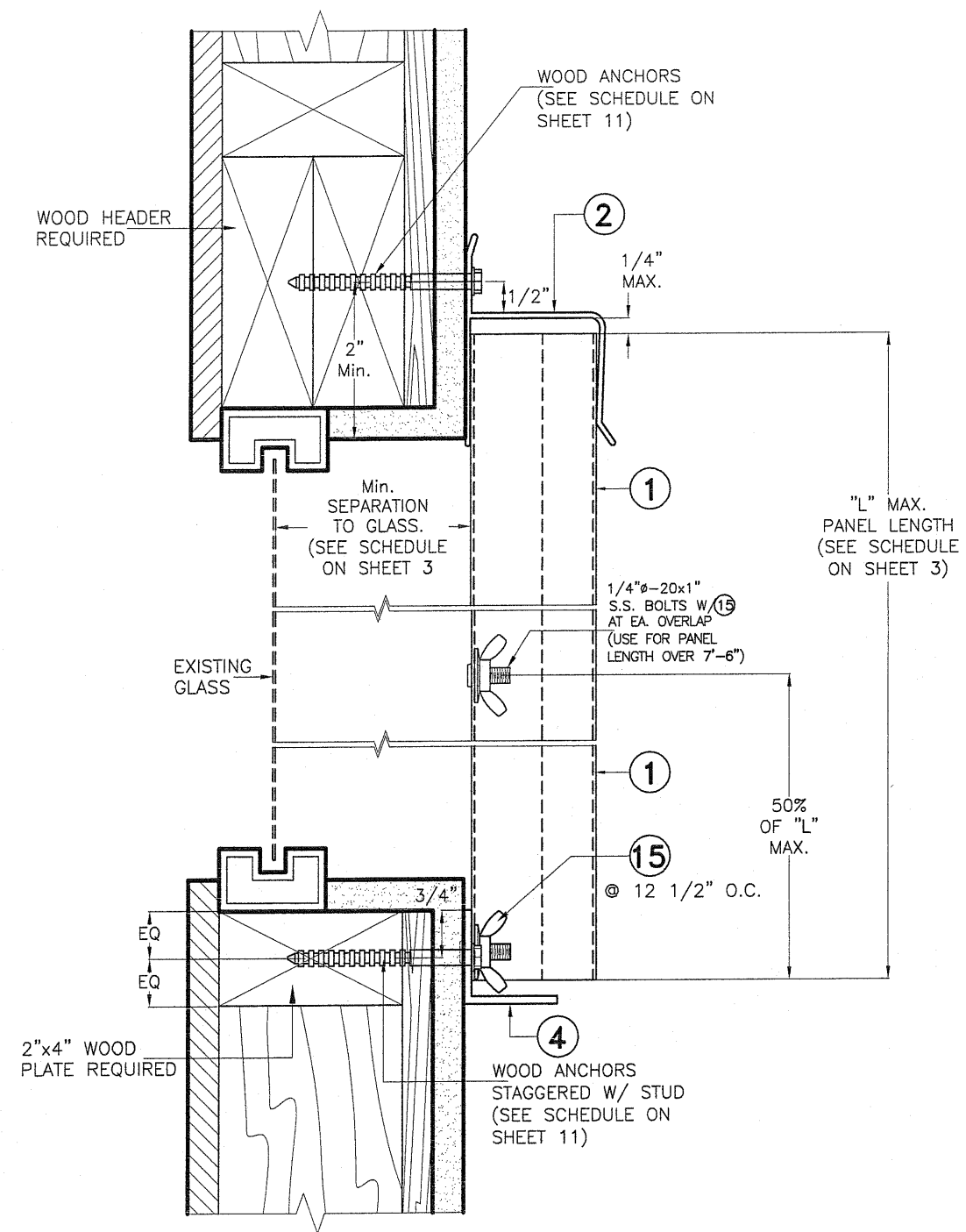
DRAWING No:

REV. No	DESCRIPTION	DATE	REV. No	DESCRIPTION	DATE
1	OLD 08-238	12/05/11	3	-	-
2	-	-	4	-	-

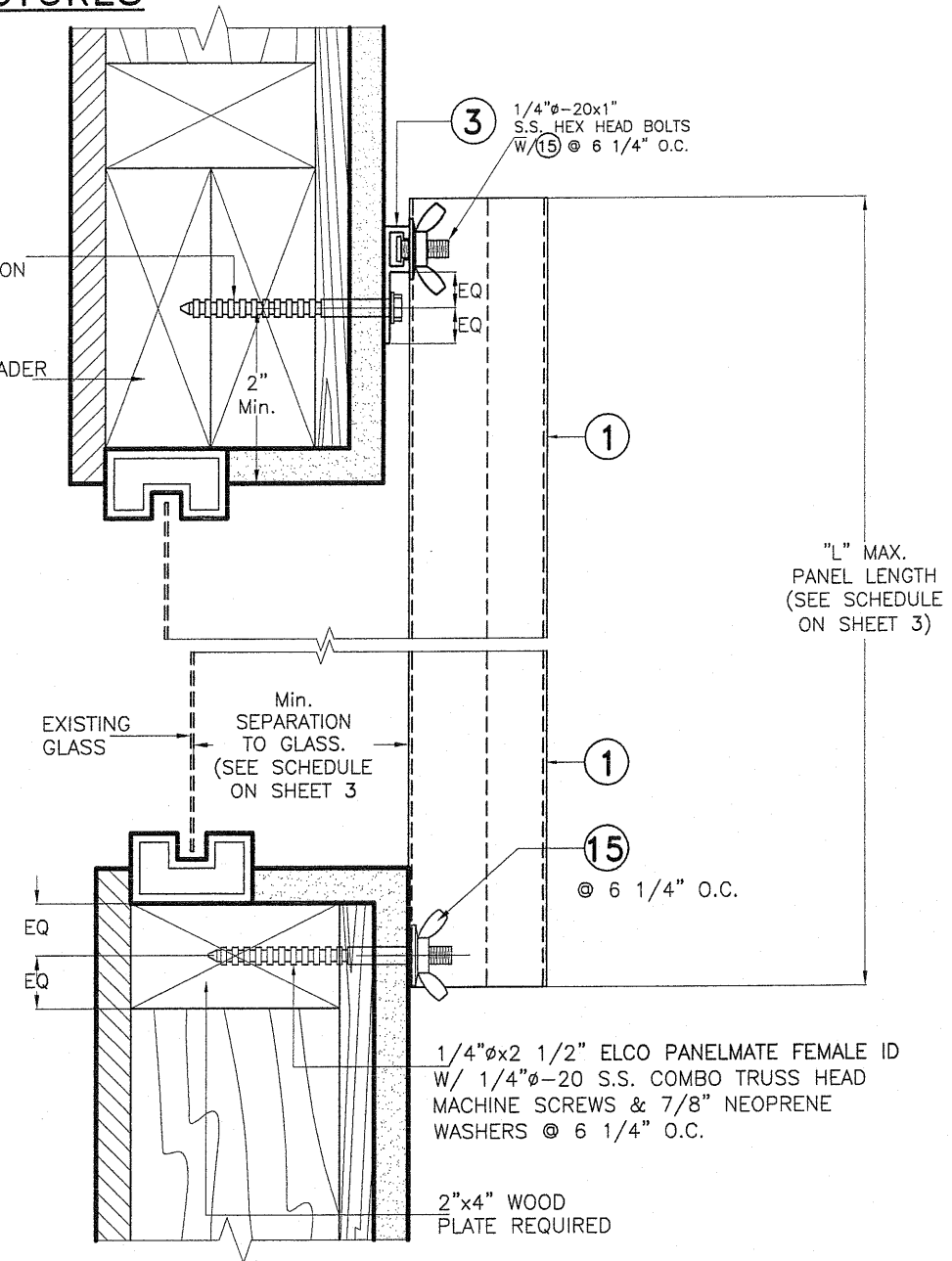
SHEET 5 OF 18



INSTALLATION DETAILS FOR REGULAR PANEL ①  
INTO WOOD STRUCTURES



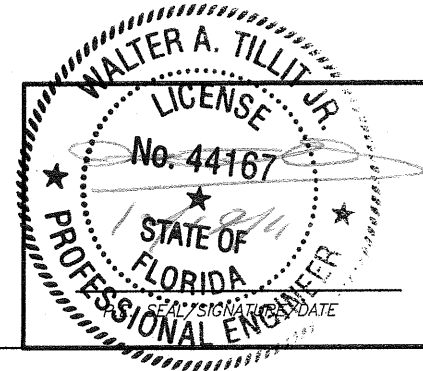
**WALL MOUNTING  
ALTERNATIVE 1W**  
SCALE 3/8=1"



**WALL MOUNTING / DIRECT MOUNT  
ALTERNATIVE 2W**  
SCALE 3/8=1"

NOTE FOR COMBINATION OF SECTIONS:  
TOP & BOTTOM MOUNTINGS CAN BE  
COMBINED IN ANY WAY TO SUIT ANY  
INSTALLATION.

- NOTES:**
1. INSTALLATION ARE ONLY VALID FOR A.S.D. DESIGN WIND LOADS (p.s.f) AND PANEL LENGTHS AS PER SCHEDULES ON SHEET 3
  2. FOR NEW WOOD FRAME CONSTRUCTION: WOOD MEMBERS TO BE SOUTHERN PINE No 2, W/ SPECIFIC DENSITY OF 0.55 OR EQUAL.



© 2011 TILTECO, INC.

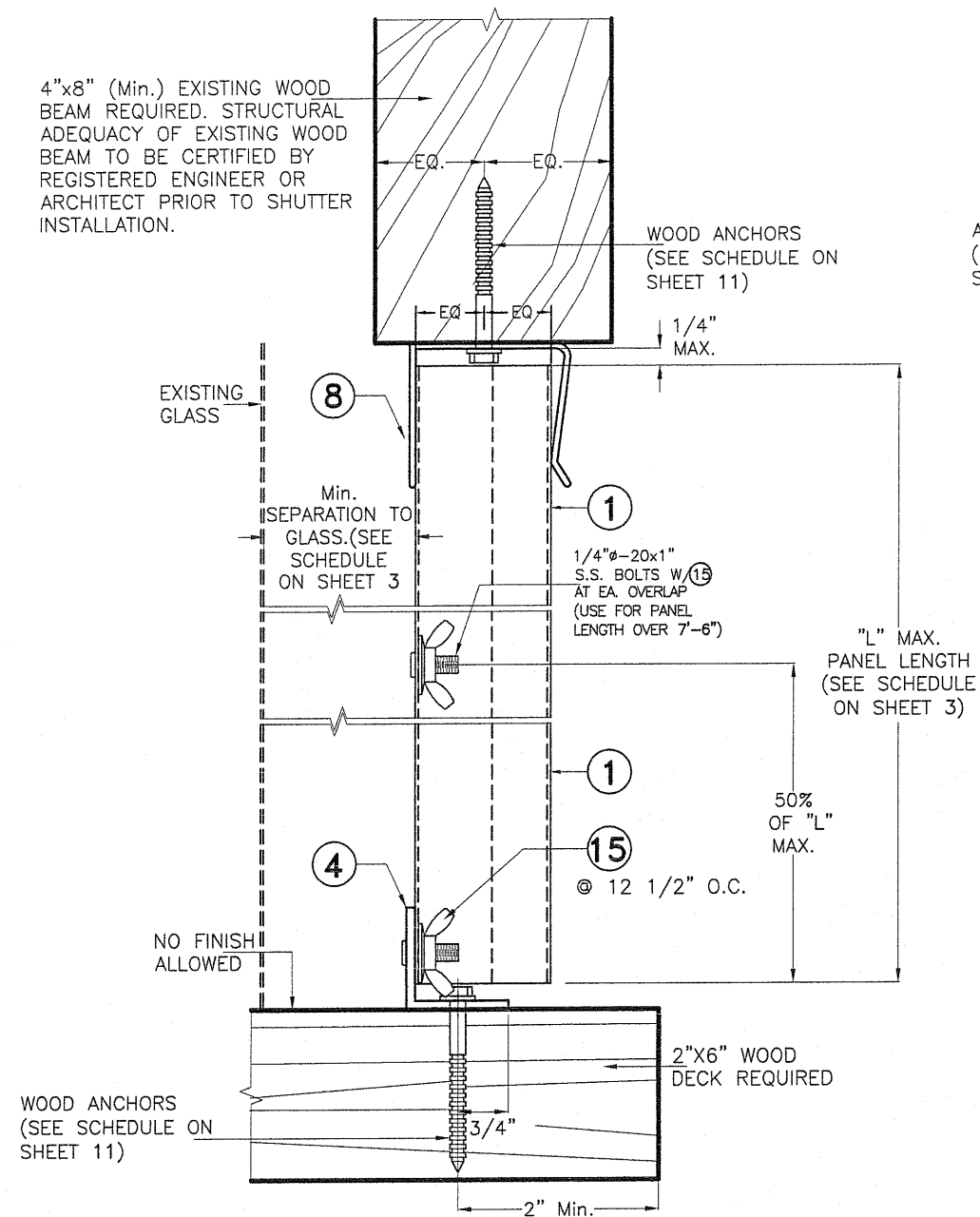
**TILTECO INC.**

TILLIT TESTING & ENGINEERING COMPANY  
6355 N.W. 36th. St., Ste. 305, VIRGINIA GARDENS, FL 33166  
Phone : (305) 871-1530 . Fax : (305) 871-1531  
EB-0006719  
WALTER A. TILLIT Jr., P.E.  
FLORIDA Lic. # 44167

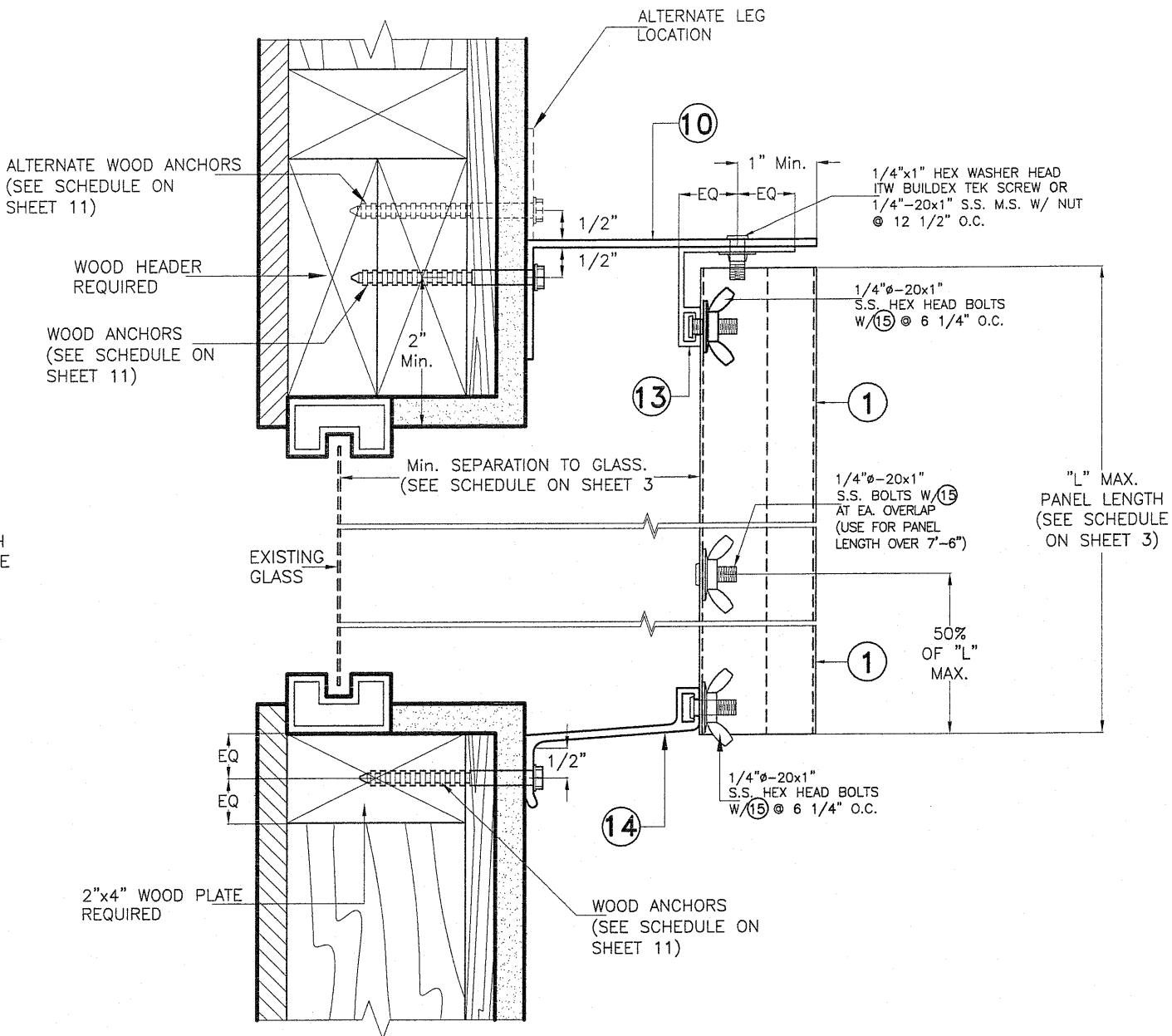
FLORIDA BUILDING CODE (Non High Velocity Hurricane Zone)

24 GAGE GALVANIZED STEEL STORM PANEL						I.A./M.C.V. R.E./A.G. DRAWN BY:
GLOBAL PROTECTION PRODUCTS, LLC.						12/05/11 DATE:
4800 S.W. 51 STREET DAVIE, FL. 33314 PHONE: (954)689-7545, FAX: (954)689-8797						11-214 DRAWING No:
REV. No	DESCRIPTION	DATE	REV. No	DESCRIPTION	DATE	SHEET 6 OF 18
1	OLD 08-238	12/05/11	3	-	-	
2	-	-	4	-	-	

INSTALLATION DETAILS FOR REGULAR PANEL ① INTO WOOD



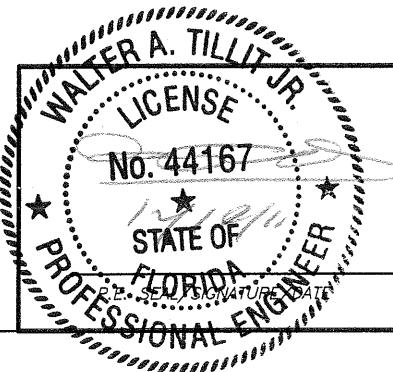
CEILING AND FLOOR MOUNTING  
ALTERNATIVE 3W  
SCALE 3/8=1"



BUILD-OUT MOUNTING  
ALTERNATIVE 4W  
SCALE 3/8=1"

NOTE FOR COMBINATION OF SECTIONS:  
TOP & BOTTOM MOUNTINGS CAN BE COMBINED IN ANY WAY TO SUIT ANY INSTALLATION.

- NOTES:
1. INSTALLATION ARE ONLY VALID FOR A.S.D. DESIGN WIND LOADS (p.s.f) AND PANEL LENGTHS AS PER SCHEDULES ON SHEET 3
  2. FOR NEW WOOD FRAME CONSTRUCTION: WOOD MEMBERS TO BE SOUTHERN PINE No 2, W/ SPECIFIC DENSITY OF 0.55 OR EQUAL.



© 2011 TILTECO, INC.

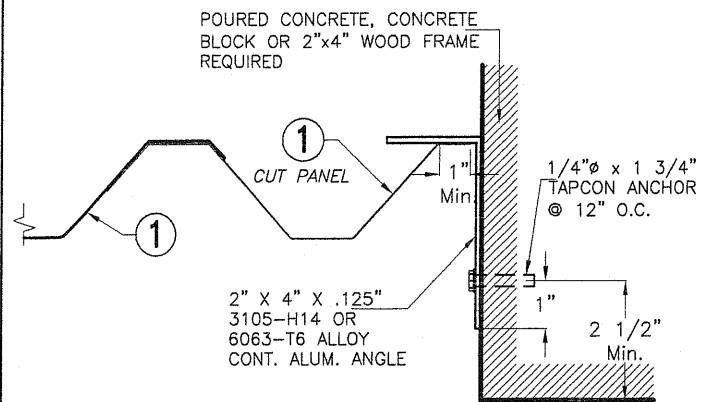
**TILTECO INC.**

TILLIT TESTING & ENGINEERING COMPANY  
6355 N.W. 36th. St., Ste. 305, VIRGINIA GARDENS, FL 33166  
Phone : (305) 871-1530 . Fax : (305) 871-1531  
EB-0006719  
WALTER A. TILLIT Jr., P.E.  
FLORIDA Lic. # 44167

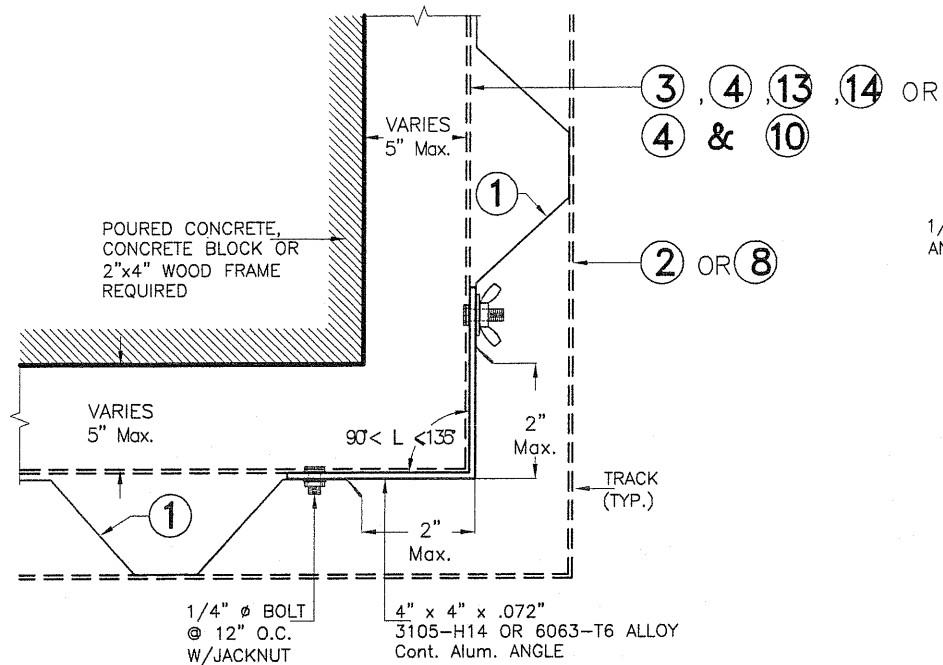
FLORIDA BUILDING CODE (Non High Velocity Hurricane Zone)

24 GAGE GALVANIZED STEEL STORM PANEL						I.A./M.C.V. R.E./A.G. DRAWN BY:
GLOBAL PROTECTION PRODUCTS, LLC.						12/05/11 DATE:
4800 S.W. 51 STREET DAVIE, FL. 33314 PHONE: (954)689-7545, FAX: (954)689-8797						11-214 DRAWING No:
REV. No	DESCRIPTION	DATE	REV. No	DESCRIPTION	DATE	SHEET 7 OF 18
1	OLD 08-238	12/05/11	3	-	-	
2	-	-	4	-	-	

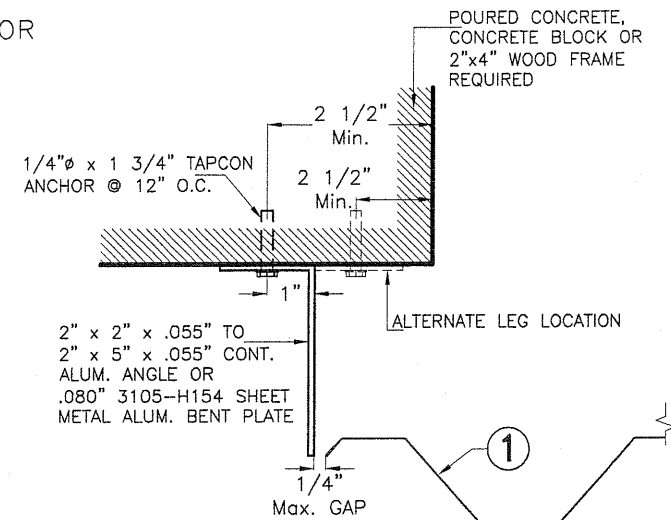
END CLOSURES DETAILS FOR INSTALLATION IN POURED CONCRETE,  
CONCRETE BLOCK OR WOOD STRUCTURES; VALID FOR REGULAR, LIFE  
SAFETY & E-Z HANG STORM PANEL ① SYSTEMS



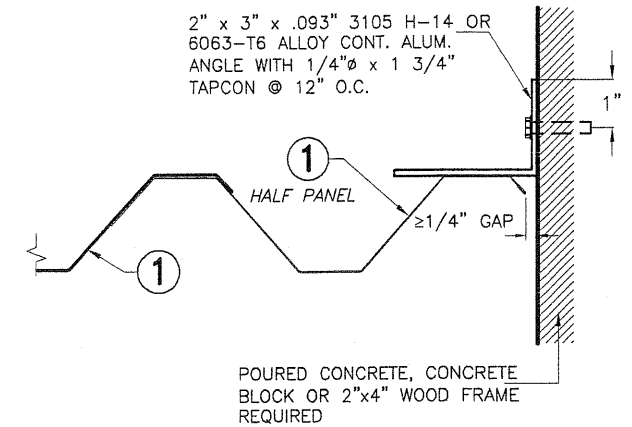
CASE A (PLAN)  
SCALE 1/4"=1"



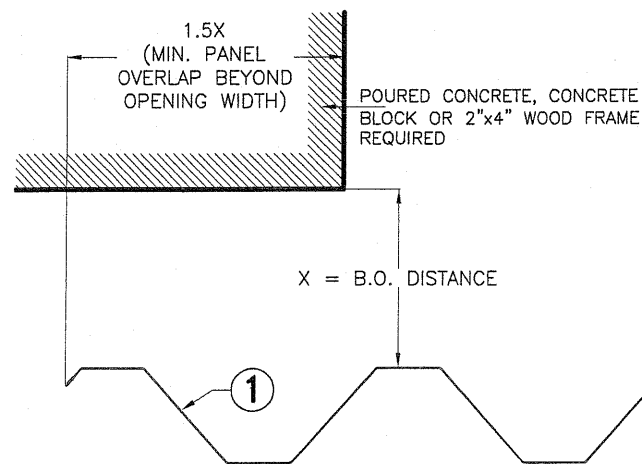
CASE B (PLAN)  
SCALE 1/4"=1"



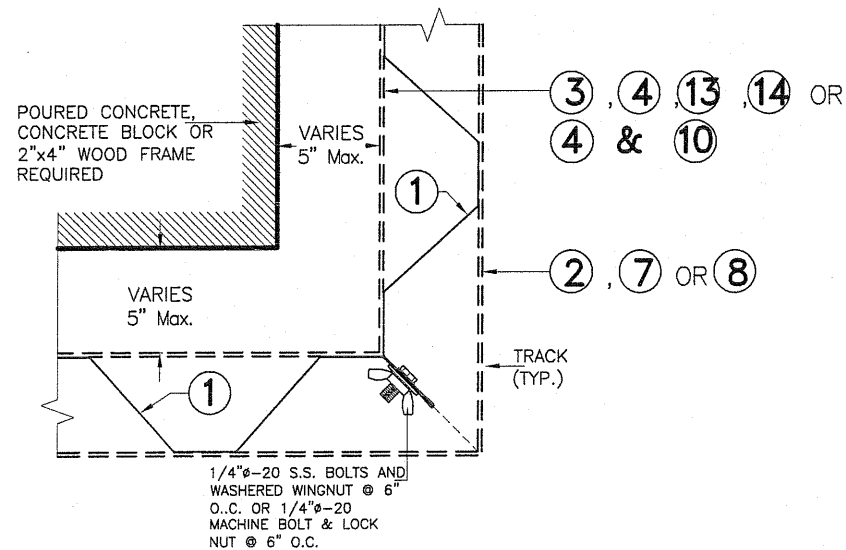
CASE C (PLAN)  
SCALE 1/4"=1"



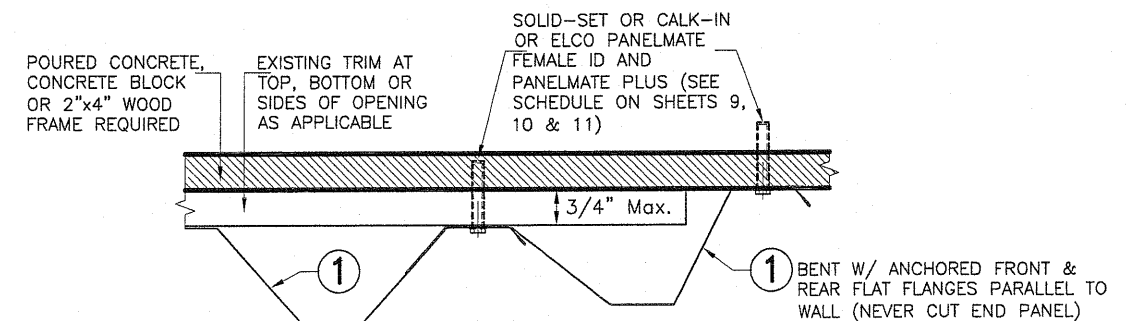
CASE D (PLAN)  
SCALE 1/4"=1"



CASE E (PLAN)  
SCALE 1/4"=1"



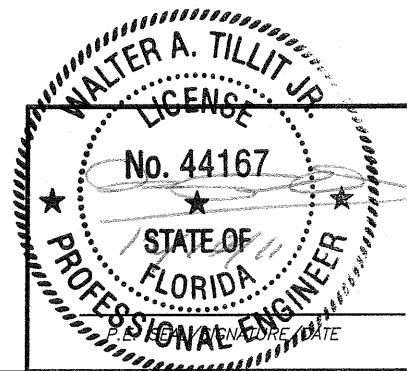
CASE F (PLAN)  
SCALE 1/4"=1"



CASE G (PLAN)  
SCALE 1/4"=1"

VALID FOR DIRECT MOUNT INSTALLATION ONLY &  
CERTIFIED PANEL INSTALLATION AT WALLS W/  
SURFACE LEVEL VARIATIONS WITHIN 3/4"

FLORIDA BUILDING CODE (Non High Velocity Hurricane Zone)



©2011 TILTECO, INC.

**TILTECO INC.**  
TILLIT TESTING & ENGINEERING COMPANY  
6355 N.W. 36th St., Ste. 305, VIRGINIA GARDENS, FL 33153  
Phone : (305) 871-1530 . Fax : (305) 871-1531  
EB-0006719  
WALTER A. TILLIT Jr., P.E.  
FLORIDA Lic. # 44167

24 GAGE GALVANIZED STEEL STORM PANEL

GLOBAL PROTECTION PRODUCTS, LLC.

4800 S.W. 51 STREET  
DAVIE, FL. 33314  
(954)689-7545, FAX: (954)689-8797

I.A./M.C.V.  
R.E./A.G.  
DRAWN BY:

12/05/11  
DATE:

1-214

DRAWING No:

REV. No	DESCRIPTION	DATE	REV. No	DESCRIPTION	DATE	DRAWING No:  SHEET 8 OF 18
1	OLD 08-238	12/05/11	3	--	--	
2	--	--	4	--	--	



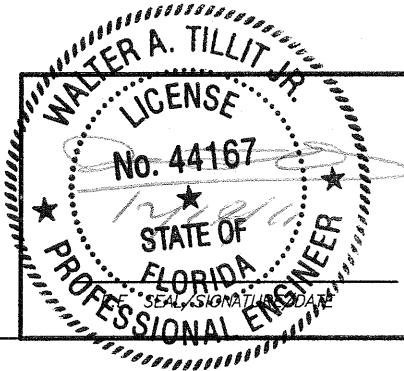
MAXIMUM A.S.D. DESIGN PRESSURE RATING (p.s.f.) AND CORRESPONDING MAXIMUM ANCHOR SPACING  
SCHEDULE FOR REGULAR STORM PANEL (1) INSTALLATIONS INTO CONCRETE & CONCRETE BLOCK STRUCTURES

(VALID ONLY FOR PANEL (1) INSTALLATIONS AS PER SECTIONS 1 THRU 6, ON SHEETS 4 & 5)

MAXIMUM A.S.D. DESIGN PRESSURE RATING (p.s.f.)	MAXIMUM ANCHORS SPACING FOR MIN E.D. PER SCHEDULE BELOW **												APPLICABLE TO SECTIONS # & ANY COMBINATION OF THEM	MAXIMUM PANEL LENGTH "L" (ft.)	
	TAPCON		SOLID-SET		PANELMATE FEMALE ID		PANELMATE PLUS		ZAMAC-NAILIN		CALK-IN				
	TO CONCRETE	TO CONCRETE BLOCK	TO CONCRETE	TO CONCRETE BLOCK	TO CONCRETE	TO CONCRETE BLOCK	TO CONCRETE	TO CONCRETE BLOCK	TO CONCRETE	TO CONCRETE BLOCK	TO CONCRETE	TO CONCRETE BLOCK			
+45, -45 OR LESS	13"	13"	13"	13"	13"	13"	13"	13"	13"	13"	13"	13"	1 (TOP)	5'-6" OR LESS	
	13"	13"	13"	13"	13"	13"	13"	13"	13"	13"	13"	13"	1 (BOTTOM)		
	13"	13"	13"	13"	13"	13"	13"	13"	13"	13"	13"	13"	2 (TOP)		
	13"	13"	13"	13"	13"	13"	13"	13"	13"	13"	13"	13"	2 (BOTTOM)		
	13"	13"	13"	13"	13"	13"	13"	13"	13"	13"	13"	13"	3 (TOP)		
	-	-	6 1/4"	6 1/4"	6 1/4"	6 1/4"	6 1/4"	6 1/4"	-	-	13"	6 1/4"	3 (BOTTOM)		
	8"	8"	8"	8"	8"	8"	8"	8"	8"	8"	8"	7 1/2"	4 (TOP)		
	8"	-	8"	-	8"	-	8"	-	8"	-	8"	-	4 (BOTTOM)		
	13"	13"	13"	13"	13"	13"	13"	13"	13"	13"	13"	13"	5 (TOP)		
	13"	13"	13"	13"	13"	13"	13"	13"	13"	13"	13"	13"	5 (BOTTOM)		
	13"	13"	13"	13"	13"	13"	13"	13"	13"	13"	13"	13"	6 (TOP)		
	-	-	6 1/4"	6 1/4"	6 1/4"	6 1/4"	-	-	-	-	6 1/4"	6 1/4"	6 (BOTTOM)		
	13"	5"	13"	10 1/2"	13"	7"	13"	7"	7 1/2	5 1/2	13"	4 1/2"	1 (TOP)	>5'-6" TO 14'-4"	
	13"	7"	13"	13"	13"	9 1/2	13"	9 1/2	10 1/2	7 1/2	13"	6"	1 (BOTTOM)		
	13"	5"	13"	10 1/2"	13"	7"	13"	7"	7 1/2	5 1/2	13"	4 1/2"	2 (TOP)		
	13"	7"	13"	13"	13"	9 1/2	13"	9 1/2	10 1/2	7 1/2	13"	6 1/2"	2 (BOTTOM)		
	13"	7"	13"	13"	13"	9 1/2	13"	9 1/2	10 1/2	7 1/2	13"	6 1/2"	3 (TOP)		
	-	-	6 1/4"	6 1/4"	6 1/4"	6 1/4"	6 1/4"	6 1/4"	-	-	6 1/4"	6 1/4"	3 (BOTTOM)		
	7"	3"	8"	5 1/2"	7"	3 1/2"	8"	4"	4 1/2"	3"	6 1/2"	3"	4 (TOP)		
	8"	-	8"	-	8"	-	8"	-	5 1/2"	-	7 1/2"	-	4 (BOTTOM)		
	13"	7"	13"	13"	13"	9 1/2"	13"	9 1/2"	10 1/2"	7 1/2"	13"	6"	5 (TOP)		
	13"	7"	13"	13"	13"	9 1/2"	13"	9 1/2"	10 1/2"	7 1/2"	13"	6 1/2"	5 (BOTTOM)		
	13"	5"	13"	10 1/2"	13"	7"	13"	7"	7 1/2"	5 1/2"	13"	4 1/2"	6 (TOP)		
	-	-	6 1/4"	6 1/4"	6 1/4"	6 1/4"	-	-	-	-	6 1/4"	6 1/4"	6 (BOTTOM)		
+45, -45 TO +65, -65	13"	13"	13"	13"	13"	13"	13"	13"	13"	13"	13"	13"	1 (TOP)	5'-6" OR LESS	
	13"	13"	13"	13"	13"	13"	13"	13"	13"	13"	13"	13"	1 (BOTTOM)		
	13"	13"	13"	13"	13"	13"	13"	13"	13"	13"	13"	13"	2 (TOP)		
	13"	13"	13"	13"	13"	13"	13"	13"	13"	13"	13"	13"	2 (BOTTOM)		
	13"	13"	13"	13"	13"	13"	13"	13"	13"	13"	13"	13"	3 (TOP)		
	13"	13"	13"	13"	13"	13"	13"	13"	13"	13"	13"	13"	3 (BOTTOM)		
	8"	5 1/2"	8"	8"	8"	6 1/2"	8"	7 1/2"	8"	6"	8"	5"	4 (TOP)		
	8"	-	8"	-	8"	-	8"	-	8"	-	8"	-	4 (BOTTOM)		
	13"	13"	13"	13"	13"	13"	13"	13"	13"	13"	13"	13"	5 (TOP)		
	13"	13"	13"	13"	13"	13"	13"	13"	13"	13"	13"	13"	5 (BOTTOM)		
	13"	13"	13"	13"	13"	13"	13"	13"	13"	13"	13"	13"	6 (TOP)		
	-	-	6 1/4"	6 1/4"	6 1/4"	6 1/4"	-	-	-	-	6 1/4"	6 1/4"	6 (BOTTOM)		
	13"	6"	13"	13"	13"	8 1/2"	13"	8 1/2"	9 1/2"	6 1/2"	13"	5 1/2"	1 (TOP)		>5'-6" TO 9'-6"
	13"	7 1/2"	13"	13"	13"	10"	13"	10"	11"	8"	13"	6 1/2"	1 (BOTTOM)		
	13"	6"	13"	13"	13"	8 1/2"	13"	8 1/2"	9 1/2"	6 1/2"	13"	5 1/2"	2 (TOP)		
	13"	7 1/2"	13"	13"	13"	10"	13"	10"	11"	8"	13"	6 1/2"	2 (BOTTOM)		
	13"	7 1/2"	13"	13"	13"	10"	13"	10"	11"	8"	13"	6 1/2"	3 (TOP)		
	-	-	6 1/4"	6 1/4"	6 1/4"	6 1/4"	6 1/4"	6 1/4"	-	-	6 1/4"	6 1/4"	3 (BOTTOM)		
7 1/2"	3"	8"	6"	7"	4"	8"	4"	4 1/2"	3 1/2"	6 1/2"	3"	4 (TOP)			
8"	-	8"	-	8"	-	8"	-	5 1/2"	-	7 1/2"	-	4 (BOTTOM)			
13"	8 1/2"	13"	13"	13"	10"	13"	10"	11"	8"	13"	6 1/2"	5 (TOP)			
13"	8 1/2"	13"	13"	13"	10"	13"	10"	11"	8"	13"	6 1/2"	5 (BOTTOM)			
13"	6"	13"	13"	13"	8 1/2"	13"	8 1/2"	9 1/2"	6 1/2"	13"	5 1/2"	6 (TOP)			
-	-	6 1/4"	6 1/4"	6 1/4"	6 1/4"	-	-	-	-	6 1/4"	6 1/4"	6 (BOTTOM)			

SEE SHEET 11 FOR ANCHORS TYPE & SPACING FOR INSTALLATIONS INTO WOOD FRAME BUILDINGS.  
\*\* MINIMUM ANCHOR SPACINGS AND MINIMUM EDGE DISTANCE ARE INDICATED ON THIS SCHEDULE. FOR E.D. LESS THAN INDICATED ON SCHEDULE REDUCE ANCHOR SPACING BY MULTIPLYING SPACING SHOWN ON SCHEDULE BY THE FOLLOWING FACTORS. FOR THIS OPERATION TO BE POSSIBLE, REDUCED SPACING OBTAINED USING FACTOR SHALL NOT BE LESS THAN MINIMUM SPACING INDICATED FOR EACH ANCHOR TYPE ON THIS SCHEDULE.

ANCHOR TYPE	1/4"	1/4"	1/4"	1/4"	1/4"	1/4"
	TAPCON	SOLID-SET	PANELMATE FEMALE ID	PANELMATE PLUS	ZAMAC-NAILIN	CALK-IN
MINIMUM ANCHOR SPACING (in.)	3	3	3	3	2 1/2"	2 1/2"
MINIMUM EDGE DISTANCE (E.D.)	CONCRETE (in.)	3 1/2"	3"	3	3 1/2"	3
	CONCRETE BLOCK (in.)	3 1/2"	3 1/2"	3 1/2	3 1/2"	4
ACTUAL EDGE DISTANCE (E.D.)	FACTOR					
1 1/2"	.35	-	-	-	-	-
2 1/2"	-	0.63	-	-	-	.50
3"	1.00	-	-	1.00	-	.63
3 1/2"	-	1.00	1.00	-	1.00	1.00



© 2011 TILTECO, INC.  
**TILTECO INC.**  
TILLIT TESTING & ENGINEERING COMPANY  
6355 N.W. 36th St., Ste. 305, VIRGINIA GARDENS, FL 33166  
Phone : (305) 871-1530 . Fax : (305) 871-1531  
EB-0006719  
WALTER A. TILLIT Jr., P.E.  
FLORIDA Lic. # 44167

FLORIDA BUILDING CODE (Non High Velocity Hurricane Zone)

24 GAGE GALVANIZED STEEL STORM PANEL

GLOBAL PROTECTION PRODUCTS, LLC.

4800 S.W. 51 STREET  
DAVIE, FL. 33314  
PHONE: (954)689-7545, FAX: (954)689-8797

I.A./M.C.V.  
R.E./A.G.  
DRAWN BY:

12/05/11  
DATE:

11-214

DRAWING No:

REV. No	DESCRIPTION	DATE	REV. No	DESCRIPTION	DATE
1	OLD 08-238	12/05/11	3	-	-
2	-	-	4	-	-

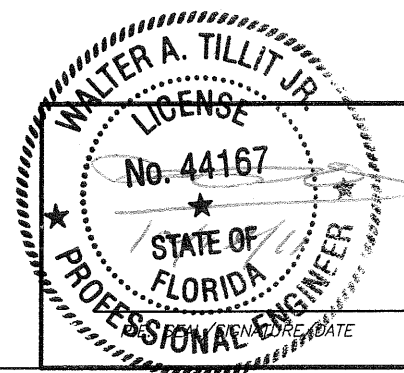
SHEET 9 OF 18

**MAXIMUM A.S.D. DESIGN PRESSURE RATING (p.s.f.) AND CORRESPONDING MAXIMUM ANCHOR SPACING**  
**SCHEDULE FOR REGULAR STORM PANEL ① INSTALLATIONS INTO CONCRETE & CONCRETE BLOCK STRUCTURES**

(VALID ONLY FOR PANEL ① INSTALLATIONS AS PER SECTIONS 1 THRU 6, ON SHEETS 4 & 5)

MAXIMUM A.S.D. DESIGN PRESSURE RATING (p.s.f.)	MAXIMUM ANCHORS SPACING FOR MIN E.D. PER SCHEDULE BELOW **												APPLICABLE TO SECTIONS # & ANY COMBINATION OF THEM	MAXIMUM PANEL LENGTH "L" (ft.)		
	TAPCON		SOLID-SET		PANELMATE FEMALE ID		PANELMATE PLUS		ZAMAC-NAILIN		CALK-IN					
	TO CONCRETE	TO CONCRETE BLOCK	TO CONCRETE	TO CONCRETE BLOCK	TO CONCRETE	TO CONCRETE BLOCK	TO CONCRETE	TO CONCRETE BLOCK	TO CONCRETE	TO CONCRETE BLOCK	TO CONCRETE	TO CONCRETE BLOCK				
>+65, -65 TO +75, -75	13"	11"	13"	13"	13"	13"	13"	13"	12"	13"	10"	1 (TOP)	5'-6" OR LESS			
	13"	11"	13"	13"	13"	13"	13"	13"	12"	13"	10"	1 (BOTTOM)				
	13"	11"	13"	13"	13"	13"	13"	13"	12"	13"	10"	2 (TOP)				
	13"	11"	13"	13"	13"	13"	13"	13"	12"	13"	10"	2 (BOTTOM)				
	13"	11"	13"	13"	13"	13"	13"	13"	12"	13"	10"	3 (TOP)				
	-	-	6 1/4"	6 1/4"	6 1/4"	6 1/4"	6 1/4"	6 1/4"	-	-	6 1/4"	6 1/4"		3 (BOTTOM)		
	8"	5"	8"	8"	8"	6"	8"	6 1/2"	7"	5"	8"	4 1/2"		4 (TOP)		
	8"	-	8"	-	8"	-	8"	8"	8"	-	8"	-		4 (BOTTOM)		
	13"	11"	13"	13"	13"	13"	13"	13"	13"	12"	13"	10"		5 (TOP)		
	13"	11"	13"	13"	13"	13"	13"	13"	13"	12"	13"	10"		5 (BOTTOM)		
	13"	11"	13"	13"	13"	13"	13"	13"	13"	12"	13"	10"		6 (TOP)		
	-	-	6 1/4"	6 1/4"	6 1/4"	6 1/4"	-	-	-	-	6 1/4"	6 1/4"		6 (BOTTOM)		
	13"	7 1/2"	13"	13"	13"	10"	13"	10"	11"	8"	13"	6 1/2"	1 (TOP)	>5'-6" TO 8'-0"		
	13"	7 1/2"	13"	13"	13"	10 1/2"	13"	10 1/2"	11 1/2"	8"	13"	7"	1 (BOTTOM)			
	13"	7 1/2"	13"	13"	13"	10"	13"	10"	11"	8"	13"	6 1/2"	2 (TOP)			
	13"	7 1/2"	13"	13"	13"	10 1/2"	13"	10 1/2"	11 1/2"	8"	13"	7"	2 (BOTTOM)			
	13"	7 1/2"	13"	13"	13"	10 1/2"	13"	10 1/2"	11 1/2"	8"	13"	7"	3 (TOP)			
	-	-	6 1/4"	6 1/4"	6 1/4"	6 1/4"	6 1/4"	6 1/4"	-	-	6 1/4"	6 1/4"	3 (BOTTOM)			
	7 1/2"	3 1/2"	8"	6"	7 1/2"	4"	8"	4 1/2"	5"	3 1/2"	7"	3"	4 (TOP)			
	8"	-	8"	-	8"	-	8"	-	6"	-	8"	-	4 (BOTTOM)			
	13"	7 1/2"	13"	13"	13"	10 1/2"	13"	10 1/2"	11 1/2"	8"	13"	7"	5 (TOP)			
	13"	7 1/2"	13"	13"	13"	10 1/2"	13"	10 1/2"	11 1/2"	8"	13"	7"	5 (BOTTOM)			
	13"	7 1/2"	13"	13"	13"	10 1/2"	13"	10 1/2"	11 1/2"	8"	13"	7"	6 (TOP)			
	-	-	6 1/4"	6 1/4"	6 1/4"	6 1/4"	-	-	-	-	6 1/4"	6 1/4"	6 (BOTTOM)			
>+75, -75 TO +119,-119.6	13"	5"	13"	10 1/2"	13"	6 1/2"	13"	6 1/2"	13"	6 1/2"	13"	6 1/2"	1 (TOP)	5'-6" OR LESS		
	13"	6 1/2"	13"	13"	13"	9"	13"	9"	10"	7 1/2"	13"	6"	1 (BOTTOM)			
	13"	5"	13"	10 1/2"	13"	6 1/2"	13"	6 1/2"	13"	6 1/2"	13"	6 1/2"	2 (TOP)			
	13"	7"	13"	13"	13"	9 1/2"	13"	9 1/2"	10 1/2"	7 1/2"	13"	6 1/2"	2 (BOTTOM)			
	13"	7"	13"	13"	13"	9 1/2"	13"	9 1/2"	10 1/2"	7 1/2"	13"	6"	3 (TOP)			
	-	-	6 1/4"	6 1/4"	6 1/4"	6 1/4"	6 1/4"	6 1/4"	6 1/4"	6 1/4"	-	-	3 (BOTTOM)			
	7"	3"	8"	5 1/2"	7"	3 1/2"	8"	4"	4 1/2"	3"	6 1/2"	2 1/2"	4 (TOP)			
	8"	-	6 1/2"	-	8"	-	8"	-	5 1/2"	-	7"	-	4 (BOTTOM)			
	13"	6 1/2"	13"	13"	13"	9"	13"	9"	10"	7 1/2"	13"	6"	5 (TOP)			
	13"	7"	13"	13"	13"	9 1/2"	13"	9 1/2"	10 1/2"	7 1/2"	13"	6"	5 (BOTTOM)			
	13"	5"	13"	10 1/2"	13"	6 1/2"	13"	6 1/2"	7 1/2"	5 1/2"	13"	4 1/2"	6 (TOP)			
	-	-	6 1/4"	6 1/4"	6 1/4"	6 1/4"	6 1/4"	6 1/4"	6 1/4"	6 1/4"	-	-	6 (BOTTOM)			
	>+75, -75 TO +119,-119.6	13"	5"	13"	10 1/2"	13"	6 1/2"	13"	6 1/2"	13"	6 1/2"	13"	6 1/2"		1 (TOP)	>5'-6" TO 7'-5"
		13"	6 1/2"	13"	13"	13"	9"	13"	9"	10"	7 1/2"	13"	6"		1 (BOTTOM)	
		13"	5"	13"	10 1/2"	13"	6 1/2"	13"	6 1/2"	13"	6 1/2"	13"	6 1/2"		2 (TOP)	
		13"	7"	13"	13"	13"	9 1/2"	13"	9 1/2"	10 1/2"	7 1/2"	13"	6 1/2"		2 (BOTTOM)	
13"		7"	13"	13"	13"	9 1/2"	13"	9 1/2"	10 1/2"	7 1/2"	13"	6"	3 (TOP)			
-		-	6 1/4"	6 1/4"	6 1/4"	6 1/4"	6 1/4"	6 1/4"	6 1/4"	6 1/4"	-	-	3 (BOTTOM)			
7"		3"	8"	5 1/2"	7"	3 1/2"	8"	4"	4 1/2"	3"	6 1/2"	2 1/2"	4 (TOP)			
8"		-	6 1/2"	-	8"	-	8"	-	5 1/2"	-	7"	-	4 (BOTTOM)			
13"		6 1/2"	13"	13"	13"	9"	13"	9"	10"	7 1/2"	13"	6"	5 (TOP)			
13"		7"	13"	13"	13"	9 1/2"	13"	9 1/2"	10 1/2"	7 1/2"	13"	6"	5 (BOTTOM)			
13"		5"	13"	10 1/2"	13"	6 1/2"	13"	6 1/2"	7 1/2"	5 1/2"	13"	4 1/2"	6 (TOP)			
-		-	6 1/4"	6 1/4"	6 1/4"	6 1/4"	6 1/4"	6 1/4"	6 1/4"	6 1/4"	-	-	6 (BOTTOM)			

SEE SHEET 11 FOR ANCHORS TYPE & SPACING FOR INSTALLATIONS INTO WOOD FRAME BUILDINGS.						
** MINIMUM ANCHOR SPACINGS AND MINIMUM EDGE DISTANCE ARE INDICATED ON THIS SCHEDULE. FOR E.D. LESS THAN INDICATED ON SCHEDULE REDUCE ANCHOR SPACING BY MULTIPLYING SPACING SHOWN ON SCHEDULE BY THE FOLLOWING FACTORS. FOR THIS OPERATION TO BE POSSIBLE, REDUCED SPACING OBTAINED USING FACTOR SHALL NOT BE LESS THAN MINIMUM SPACING INDICATED FOR EACH ANCHOR TYPE ON THIS SCHEDULE.						
ANCHOR TYPE		1/4"Ø	1/4"Ø	1/4"Ø	1/4"Ø	1/4"Ø
		TAPCON	SOLID-SET	PANELMATE FEMALE ID	PANELMATE PLUS	ZAMAC-NAILIN
MINIMUM ANCHOR SPACING (in.)		3	3	3	3	2 1/2"
MINIMUM EDGE DISTANCE (E.D.)	CONCRETE (in.)	3	3 1/2"	3"	3	3 1/2"
	CONCRETE BLOCK (in.)	3	3 1/2"	3 1/2"	3 1/2"	4
ACTUAL EDGE DISTANCE (E.D.)		FACTOR				
1 1/2"		.35	-	-	-	-
2 1/2"		-	0.63	-	-	.50
3"		1.00	-	-	1.00	.63
3 1/2"		-	1.00	1.00	-	1.00



© 2011 TILTECO, INC.

**TILTECO INC.**

TILLIT TESTING & ENGINEERING COMPANY  
6355 N.W. 36th St., Ste. 305, VIRGINIA GARDENS, FL 33166  
Phone : (305) 871-1530 . Fax : (305) 871-1531  
EB-0006719  
WALTER A. TILLIT JR., P.E.  
FLORIDA Lic. # 44167

FLORIDA BUILDING CODE (Non High Velocity Hurricane Zone)

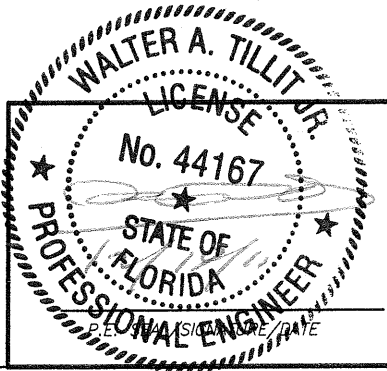
24 GAGE GALVANIZED STEEL STORM PANEL						I.A./M.C.V. R.E./A.G. DRAWN BY:
GLOBAL PROTECTION PRODUCTS, LLC.						12/05/11 DATE:
4800 S.W. 51 STREET DAVE, FL. 33314 PHONE: (954)689-7545, FAX: (954)689-8797						11-214
						DRAWING No:
REV. No	DESCRIPTION	DATE	REV. No	DESCRIPTION	DATE	SHEET 10 OF 18
1	OLD 08-238	12/05/11	3	-	-	
2	-	-	4	-	-	

MAXIMUM A.S.D. DESIGN PRESSURE RATING (p.s.f.) AND CORRESPONDING MAXIMUM ANCHOR SPACING  
SCHEDULE FOR REGULAR STORM PANEL ① INSTALLATIONS INTO WOOD STRUCTURES

(VALID ONLY FOR PANEL ① INSTALLATIONS AS PER ALTERNATIVES 1W THRU 4W, ON SHEETS 6 & 7)

MAXIMUM A.S.D. DESIGN PRESSURE RATING (p.s.f.)	MAXIMUM ANCHORS SPACING FOR E.D. = AS SHOWN ON SHEETS 6 & 7					APPLICABLE TO ALTERNATIVES # & ANY COMBINATION OF THEM	MAXIMUM PANEL LENGTH "L" (ft.)
	TAPCON	LAG SCREW	PANELMATE FEMALE ID	PANELMATE PLUS	WOOD BUSHING		
+45, -45 OR LESS	13"	13"	13"	13"	13"	1W (TOP)	5'-0" OR LESS
	13"	13"	13"	13"	13"	1W (BOTTOM)	
	6 1/2"	6 1/2"	6 1/2"	6 1/2"	6 1/2"	2W (TOP)	
	-	-	6 1/4"	6 1/4"	6 1/4"	2W (BOTTOM)	
	8"	8"	8"	8"	-	3W (TOP)	
	8"	8"	8"	8"	-	3W (BOTTOM)	
	13"	13"	13"	13"	13"	4W (TOP)	
	13"	13"	13"	13"	13"	4W (BOTTOM)	
	13"	13"	13"	13"	8 1/2"	1W (TOP)	>5'-0" TO 14'-4"
	13"	13"	13"	13"	6"	1W (BOTTOM)	
	6 1/2"	6 1/2"	6 1/2"	6 1/2"	6 1/2"	2W (TOP)	
	-	-	6 1/4"	6 1/4"	6 1/4"	2W (BOTTOM)	
	4 1/2"	4"	6 1/2"	6 1/2"	-	3W (TOP)	
	4 1/2"	4 1/2"	7"	7"	-	3W (BOTTOM)	
	10 1/2"	9 1/2"	12"	12"	4"	4W (TOP)	
	13"	13"	13"	13"	8 1/2"	4W (BOTTOM)	

MAXIMUM A.S.D. DESIGN PRESSURE RATING (p.s.f.)	MAXIMUM ANCHORS SPACING FOR E.D. = AS SHOWN ON SHEETS 6 & 7					APPLICABLE TO ALTERNATIVES # & ANY COMBINATION OF THEM	MAXIMUM PANEL LENGTH "L" (ft.)
	TAPCON	LAG SCREW	PANELMATE FEMALE ID	PANELMATE PLUS	WOOD BUSHING		
>+45, -45 TO +75, -75	13"	13"	13"	13"	13"	1W (TOP)	5'-0" OR LESS
	13"	13"	13"	13"	8"	1W (BOTTOM)	
	6 1/2"	6 1/2"	6 1/2"	6 1/2"	6 1/2"	2W (TOP)	
	-	-	6 1/4"	6 1/4"	6 1/4"	2W (BOTTOM)	
	7"	7 1/2"	8"	8"	-	3W (TOP)	
	7 1/2"	8"	8"	8"	-	3W (BOTTOM)	
	13"	13"	13"	13"	13"	4W (TOP)	
	13"	13"	13"	13"	13"	4W (BOTTOM)	
	13"	13"	13"	13"	10"	1W (TOP)	>5'-0" TO 7'-5"
	13"	13"	13"	13"	6 1/4"	1W (BOTTOM)	
	6 1/2"	6 1/2"	6 1/2"	6 1/2"	6 1/2"	2W (TOP)	
	-	-	6 1/4"	6 1/4"	6 1/4"	2W (BOTTOM)	
	4 1/2"	5"	7 1/2"	7 1/2"	-	3W (TOP)	
	5"	5 1/2"	8"	8"	-	3W (BOTTOM)	
	13"	12"	13"	13"	5 1/2"	4W (TOP)	
	13"	13"	13"	13"	10"	4W (BOTTOM)	



© 2011 TILTECO, INC.

**TILTECO INC.**

TILLIT TESTING & ENGINEERING COMPANY  
6355 N.W. 36th. St., Ste. 305, VIRGINIA GARDENS, FL 33166  
Phone : (305) 871-1530 . Fax : (305) 871-1531

EB-0006719  
WALTER A. TILLIT Jr., P.E.  
FLORIDA Lic. # 44167

FLORIDA BUILDING CODE (Non High Velocity Hurricane Zone)

24 GAGE GALVANIZED STEEL STORM PANEL

GLOBAL PROTECTION PRODUCTS, LLC.

4800 S.W. 51 STREET  
DAVIE, FL. 33314

PHONE: (954)689-7545, FAX: (954)689-8797

REV. No	DESCRIPTION	DATE	REV. No	DESCRIPTION	DATE
1	OLD 08-238	12/05/11	3	-	-
2	-	-	4	-	-

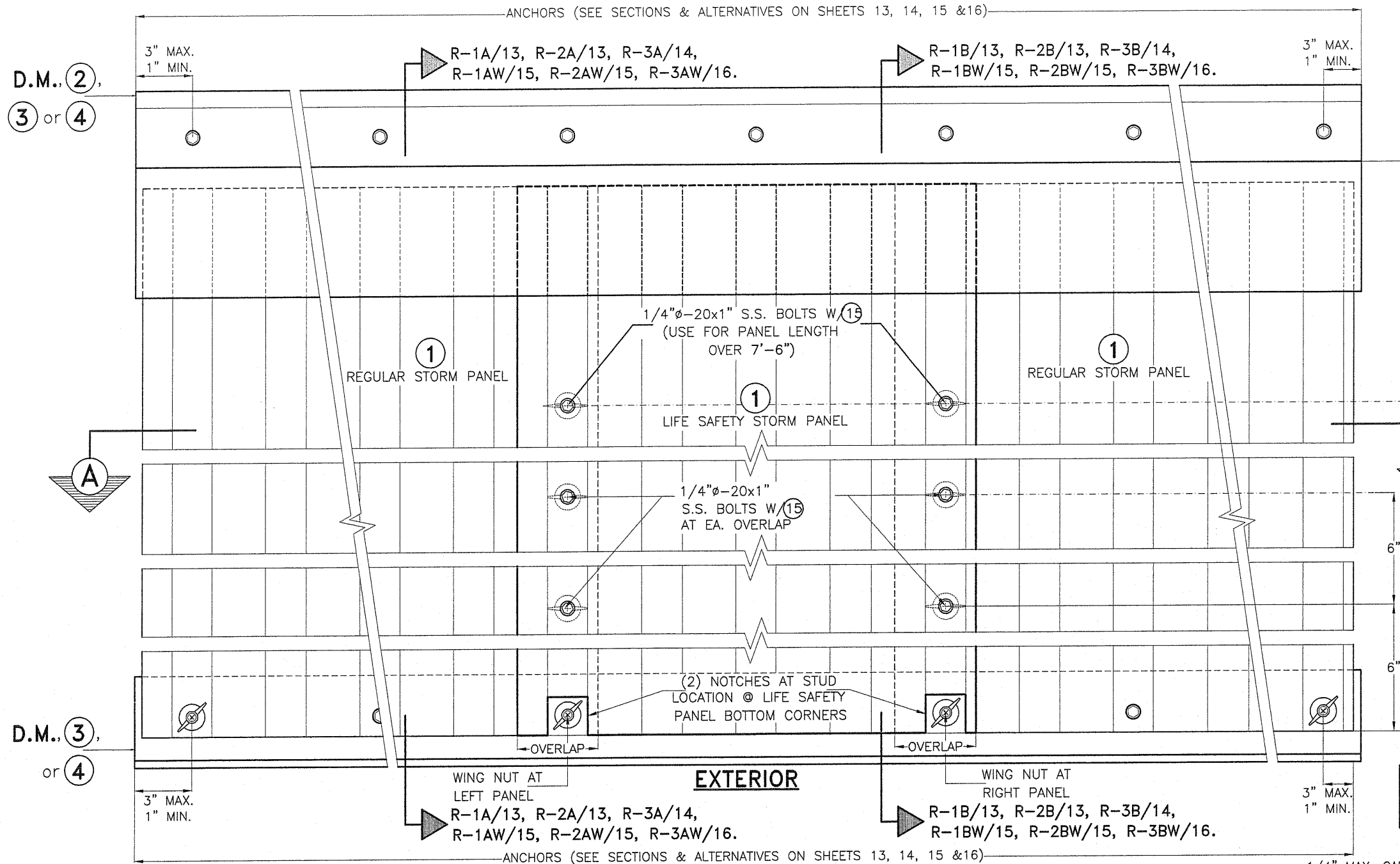
I.A./M.C.V.  
R.E./A.G.  
DRAWN BY:

12/05/11  
DATE:

11-214

DRAWING No:

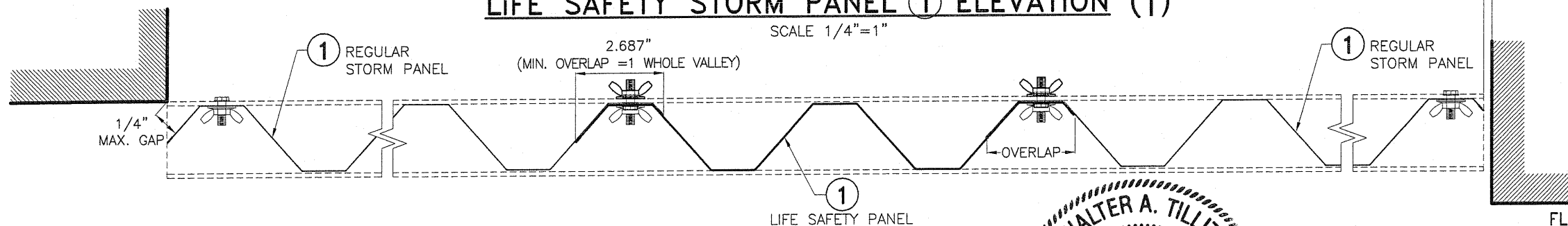
SHEET 11 OF 18



† INSTALLATIONS ONLY VALID FOR BASIC WIND SPEEDS UP TO 175 m.p.h.

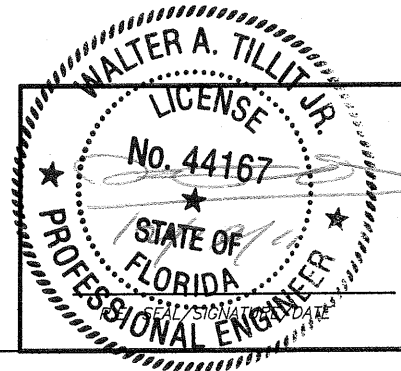
# LIFE SAFETY STORM PANEL ① ELEVATION (†)

SCALE 1/4"=1"



EXTERIOR

SECTION A-A  
SCALE 1/4"=1"



© 2011 TILTECO, INC.  
**TILTECO INC.**  
TILLIT TESTING & ENGINEERING COMPANY  
6355 N.W. 36th St., Ste. 305, VIRGINIA GARDENS, FL 33166  
Phone : (305) 871-1530 • Fax : (305) 871-1531  
EB-0006719  
WALTER A. TILLIT Jr., P.E.  
FLORIDA Lic. # 44167

FLORIDA BUILDING CODE (Non High Velocity Hurricane Zone)

24 GAGE GALVANIZED STEEL STORM PANEL

GLOBAL PROTECTION PRODUCTS, LLC.

4800 S.W. 51 STREET  
DAVIE, FL. 33314  
PHONE: (954)689-7545, FAX: (954)689-8797

REV. No	DESCRIPTION	DATE	REV. No	DESCRIPTION	DATE
1	OLD 08-238	12/05/11	3	-	-
2	-	-	4	-	-

I.A./M.C.V.  
R.E./A.G.  
DRAWN BY:

12/05/11  
DATE:

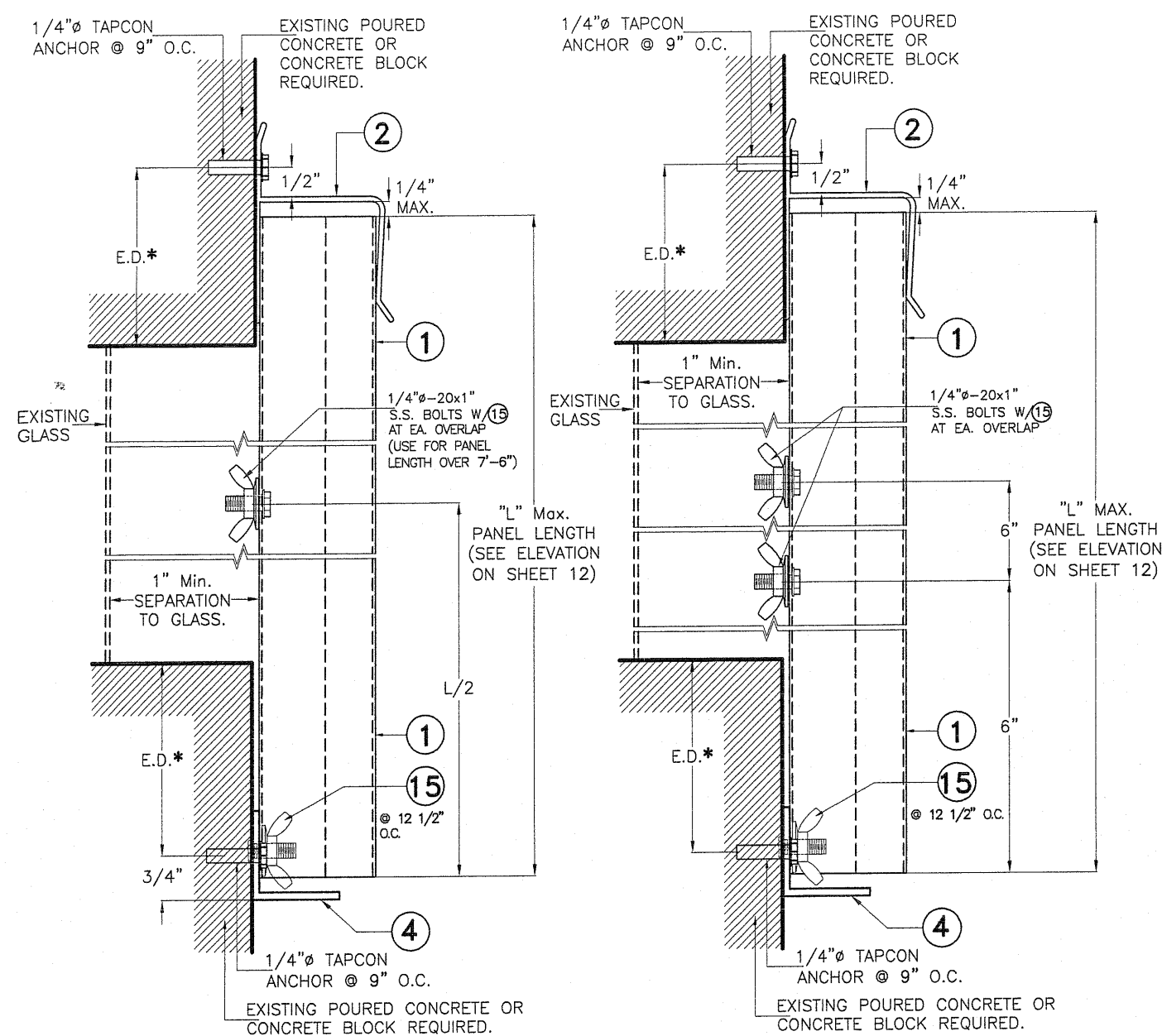
11-214

DRAWING No:

SHEET 12 OF 18



INSTALLATION DETAILS FOR LIFE SAFETY PANEL ①  
INTO POURED CONCRETE OR CONCRETE BLOCK STRUCTURES



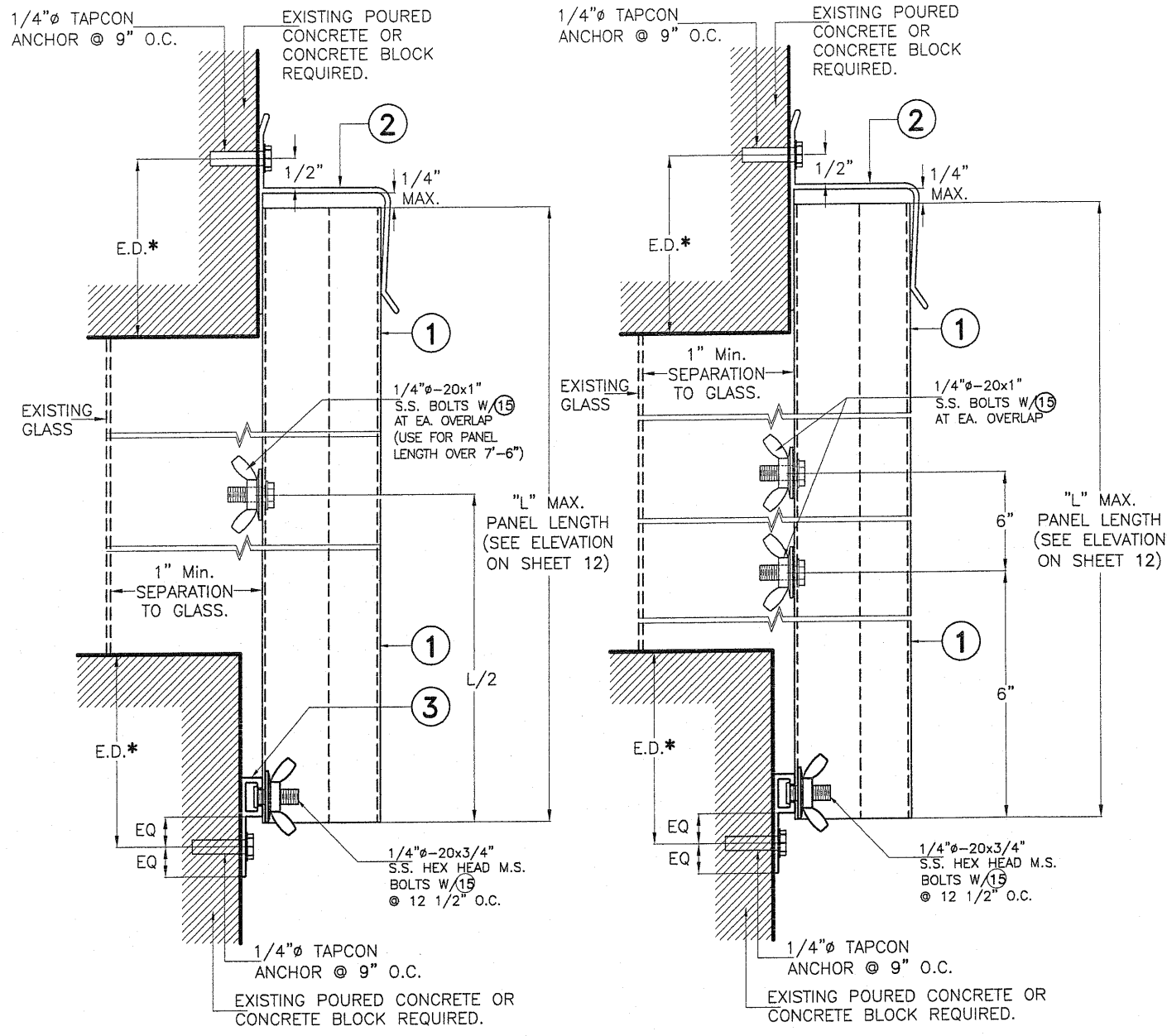
SECTION R-1A  
① REGULAR PANELS

SECTION R-1B  
① LIFE SAFETY PANEL

WALL MOUNTINGS  
SCALE 3/8=1"

ANCHOR TYPE		1/4" TAPCON
MINIMUM ANCHOR SPACING (in.)		3
* MINIMUM EDGE DISTANCE (E.D.)	Concrete (in.)	3
	Concrete Block (in.)	3
ACTUAL EDGE DISTANCE (E.D.)		FACTOR
1 1/2"		.35
2 1/2"		—
3"		1.00
3 1/2"		—

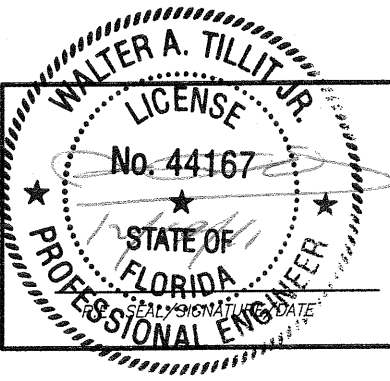
SEE SHEETS 15 & 16 FOR ANCHORS TYPE & SPACING FOR INSTALLATIONS INTO WOOD FRAME BUILDINGS. MINIMUM ANCHOR SPACINGS AND MINIMUM EDGE DISTANCE ARE INDICATED ON THIS SCHEDULE. FOR E.D. LESS THAN INDICATED ON SCHEDULE REDUCE ANCHOR SPACING BY MULTIPLYING SPACING SHOWN ON SCHEDULE BY THE FOLLOWING FACTORS. FOR THIS OPERATION TO BE POSSIBLE, REDUCED SPACING OBTAINED USING FACTOR SHALL NOT BE LESS THAN MINIMUM SPACING INDICATED FOR EACH ANCHOR TYPE ON THIS SCHEDULE.



SECTION R-2A  
① REGULAR PANELS

SECTION R-2B  
① LIFE SAFETY PANEL

WALL MOUNTINGS  
SCALE 3/8=1"



© 2011 TILTECO, INC.

**TILTECO INC.**

TILLIT TESTING & ENGINEERING COMPANY  
6355 N.W. 36th St., Ste. 305, VIRGINIA GARDENS, FL 33166  
Phone : (305) 871-1530 . Fax : (305) 871-1531  
EB-0006719  
WALTER A. TILLIT Jr., P.E.  
FLORIDA Lic. # 44167

FLORIDA BUILDING CODE (Non High Velocity Hurricane Zone)

24 GAGE GALVANIZED STEEL STORM PANEL

**GLOBAL PROTECTION PRODUCTS, LLC.**

4800 S.W. 51 STREET  
DAVIE, FL. 33314  
PHONE: (954)689-7545, FAX: (954)689-8797

I.A./M.C.V.  
R.E./A.G.  
DRAWN BY:

12/05/11  
DATE:

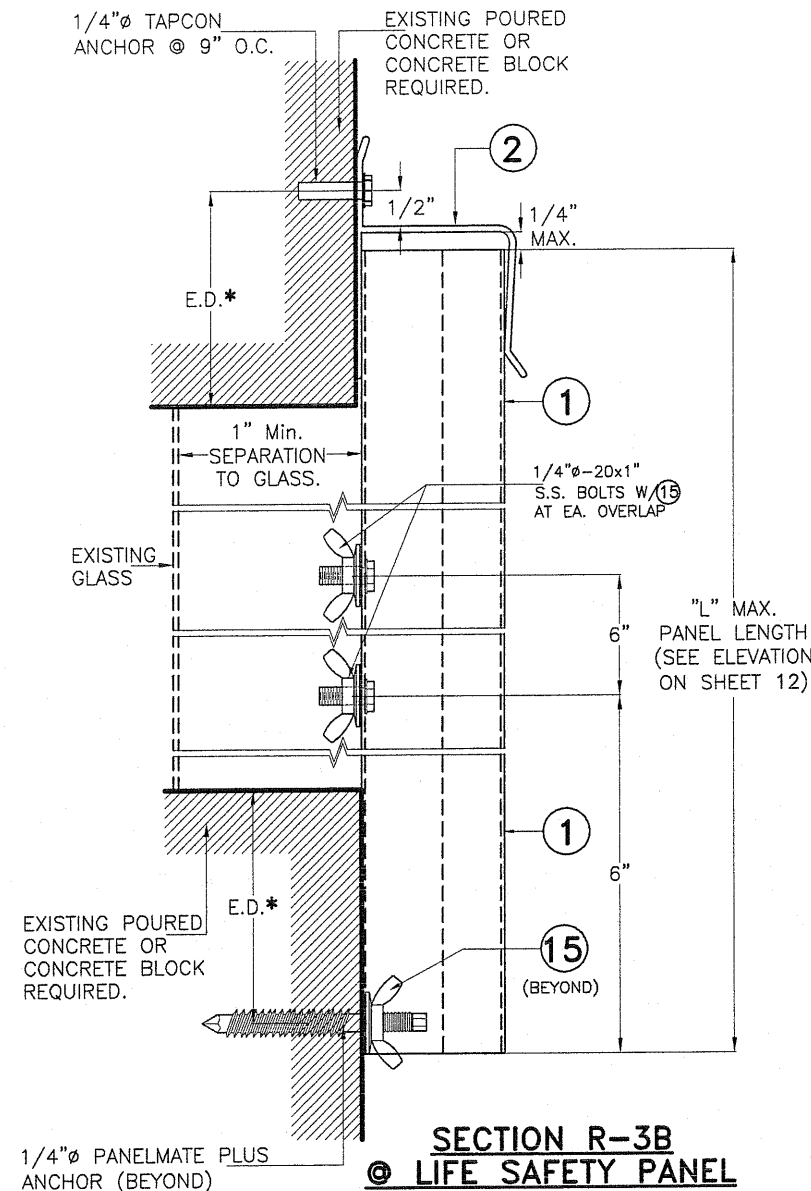
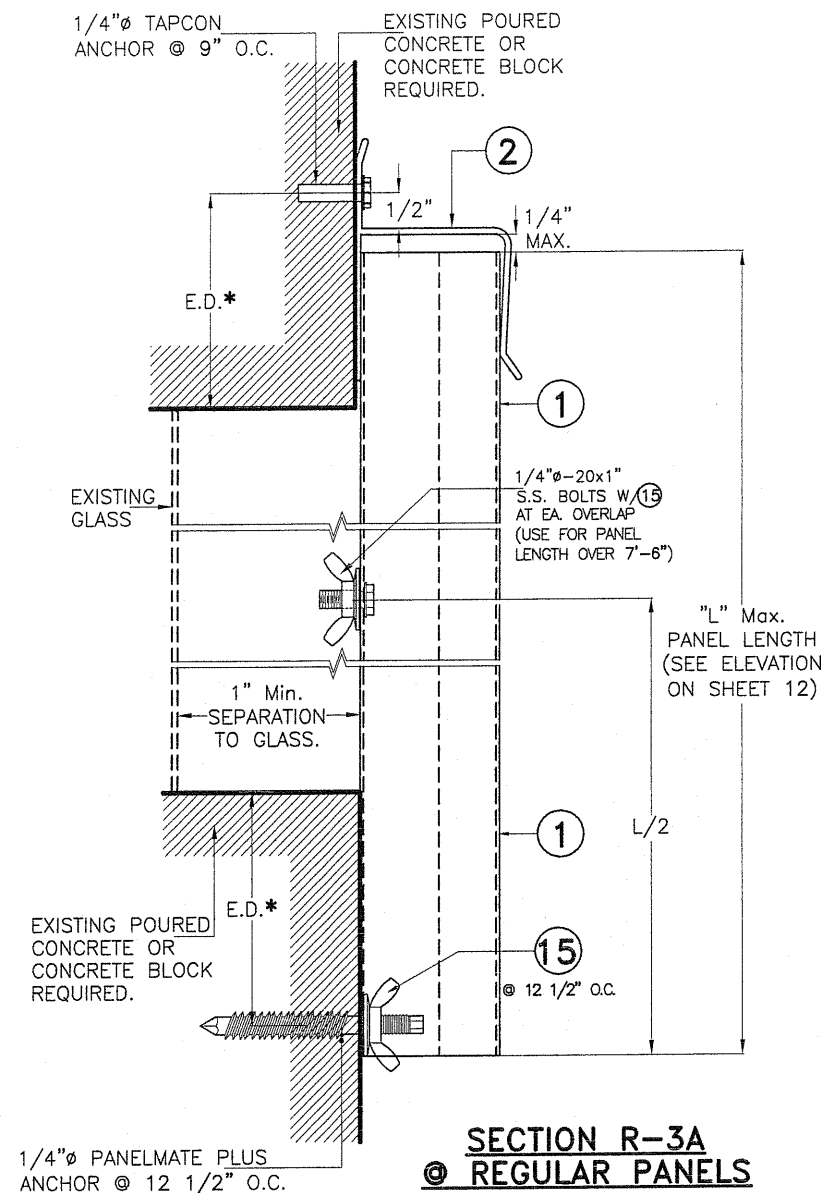
11-214  
DRAWING No:

REV. No	DESCRIPTION	DATE	REV. No	DESCRIPTION	DATE
1	OLD 08-238	12/05/11	3	—	—
2	—	—	4	—	—

SHEET 13 OF 18



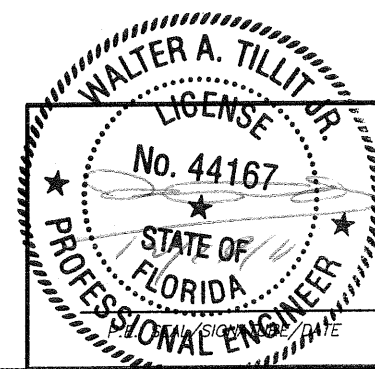
# **INSTALLATION DETAILS FOR LIFE SAFETY PANEL ①** **INTO POURED CONCRETE OR CONCRETE BLOCK STRUCTURES**



## **WALL MOUNTINGS** SCALE 3/8"=1"

SEE SHEETS 15 & 16 FOR ANCHORS TYPE & SPACING FOR INSTALLATIONS INTO WOOD FRAME BUILDINGS. MINIMUM ANCHOR SPACINGS AND MINIMUM EDGE DISTANCE ARE INDICATED ON THIS SCHEDULE. FOR E.D. LESS THAN INDICATED ON SCHEDULE REDUCE ANCHOR SPACING BY MULTIPLYING SPACING SHOWN ON SCHEDULE BY THE FOLLOWING FACTORS. FOR THIS OPERATION TO BE POSSIBLE, REDUCED SPACING OBTAINED USING FACTOR SHALL NOT BE LESS THAN MINIMUM SPACING INDICATED FOR EACH ANCHOR TYPE ON THIS SCHEDULE.

ANCHOR TYPE		1/4"Ø	1/4"Ø
		TAPCON	PANELMATE PLUS
MINIMUM ANCHOR SPACING (in.)		3	3
*MINIMUM EDGE DISTANCE (E.D.)	Concrete (in.)	3	3
	Concrete Block (in.)	3	3 1/2
ACTUAL EDGE DISTANCE (E.D.)		FACTOR	
1 1/2"		.35	-
2 1/2"		-	-
3"		1.00	1.00
3 1/2"		-	-



©2011 TILTECO, INC.

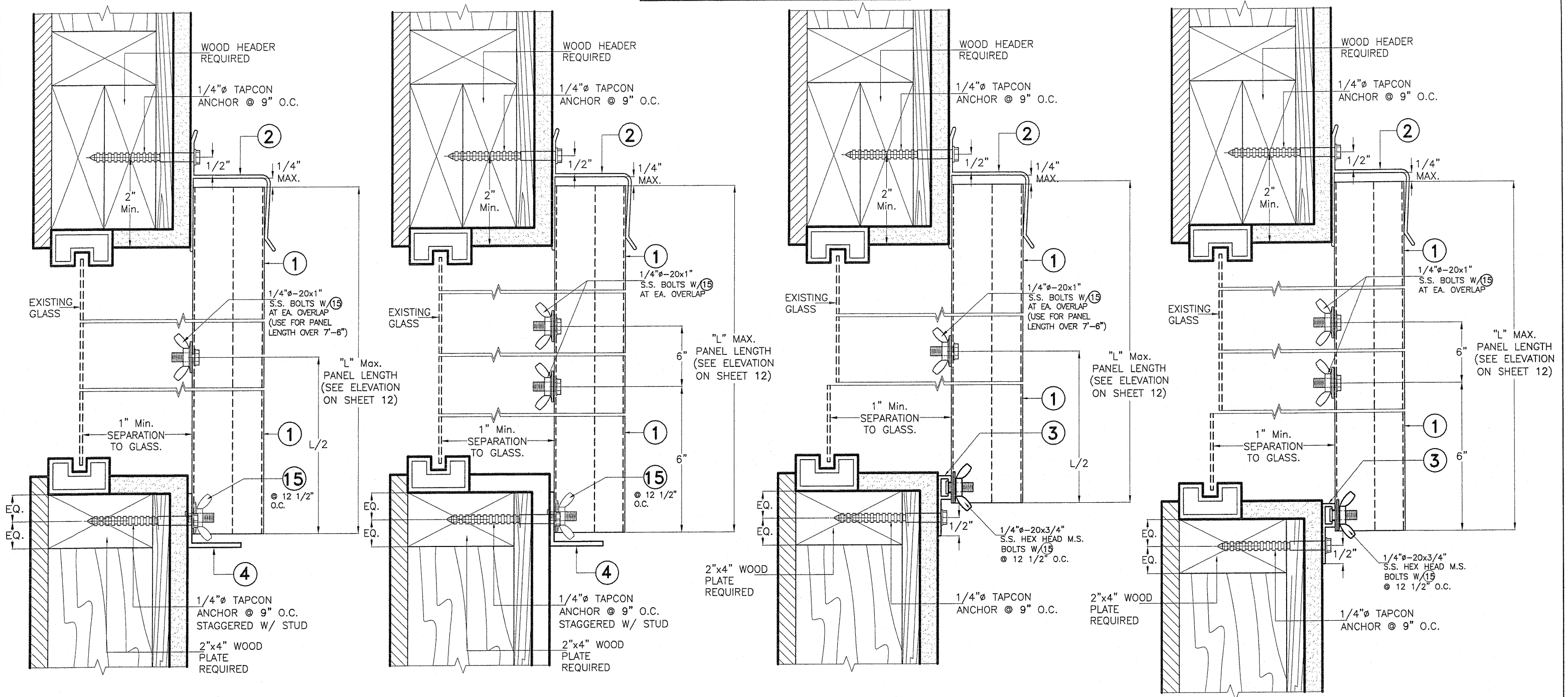
**TILTECO INC.**

TILLIT TESTING & ENGINEERING COMPANY  
 6355 N.W. 36th St., Ste. 305, VIRGINIA GARDENS, FL 33166  
 Phone: (305) 871-1530 Fax: (305) 871-1531  
 EB-0006719  
 WALTER A. TILLIT Jr., P.E.  
 FLORIDA Lic. # 44167

FLORIDA BUILDING CODE (Non High Velocity Hurricane Zone)

24 GAGE GALVANIZED STEEL STORM PANEL						I.A./M.C.V. R.E./A.G. DRAWN BY:
GLOBAL PROTECTION PRODUCTS, LLC.						12/05/11 DATE:
4800 S.W. 51 STREET DAVIE, FL. 33314 PHONE: (954)689-7545, FAX: (954)689-8797						11-214 DRAWING No:
REV. No	DESCRIPTION	DATE	REV. No	DESCRIPTION	DATE	SHEET 14 OF 18
1	OLD 08-238	12/05/11	3	-	-	
2	-	-	4	-	-	

# INSTALLATION DETAILS FOR LIFE SAFETY PANEL ① INTO WOOD STRUCTURES



**ALTERNATIVE R-1AW**  
© REGULAR PANELS

**ALTERNATIVE R-1BW**  
© LIFE SAFETY PANEL

**ALTERNATIVE R-2AW**  
© REGULAR PANELS

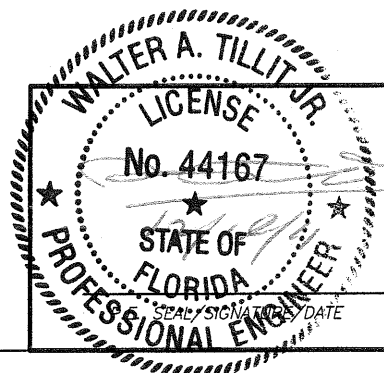
**ALTERNATIVE R-2BW**  
© LIFE SAFETY PANEL

**WALL MOUNTINGS**  
SCALE 3/8=1"

**WALL MOUNTINGS**  
SCALE 3/8=1"

**NOTES:**

1. INSTALLATION ARE ONLY VALID FOR A.S.D. DESIGN WIND LOADS (p.s.f) AND PANEL LENGTHS AS PER ELEVATION ON SHEET 12.
2. FOR NEW WOOD FRAME CONSTRUCTION: WOOD MEMBERS TO BE SOUTHERN PINE No 2, W/ SPECIFIC DENSITY OF 0.55 OR EQUAL.



© 2011 TILTECO, INC.

**TILTECO INC.**

TILLIT TESTING & ENGINEERING COMPANY  
6355 N.W. 36th St., Ste. 305, VIRGINIA GARDENS, FL 33166  
Phone : (305) 871-1530 . Fax : (305) 871-1531  
EB-0006719  
WALTER A. TILLIT Jr., P.E.  
FLORIDA Lic. # 44167

FLORIDA BUILDING CODE (Non High Velocity Hurricane Zone)

24 GAGE GALVANIZED STEEL STORM PANEL

**GLOBAL PROTECTION PRODUCTS, LLC.**

4800 S.W. 51 STREET  
DAVIE, FL 33314

PHONE: (954)689-7545, FAX: (954)689-8797

I.A./M.C.V.  
R.E./A.G.  
DRAWN BY:

12/05/11  
DATE:

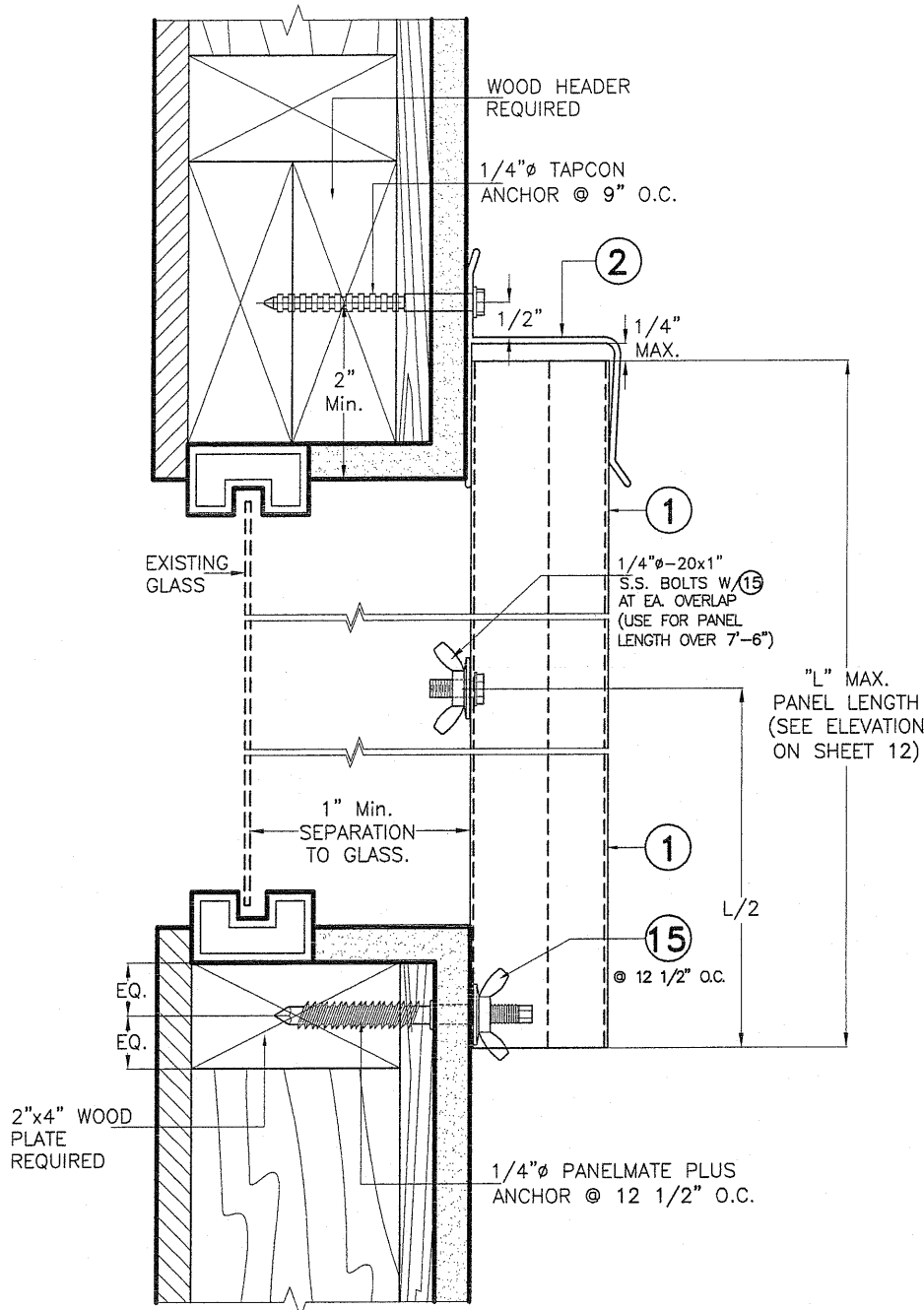
11-214

DRAWING No:

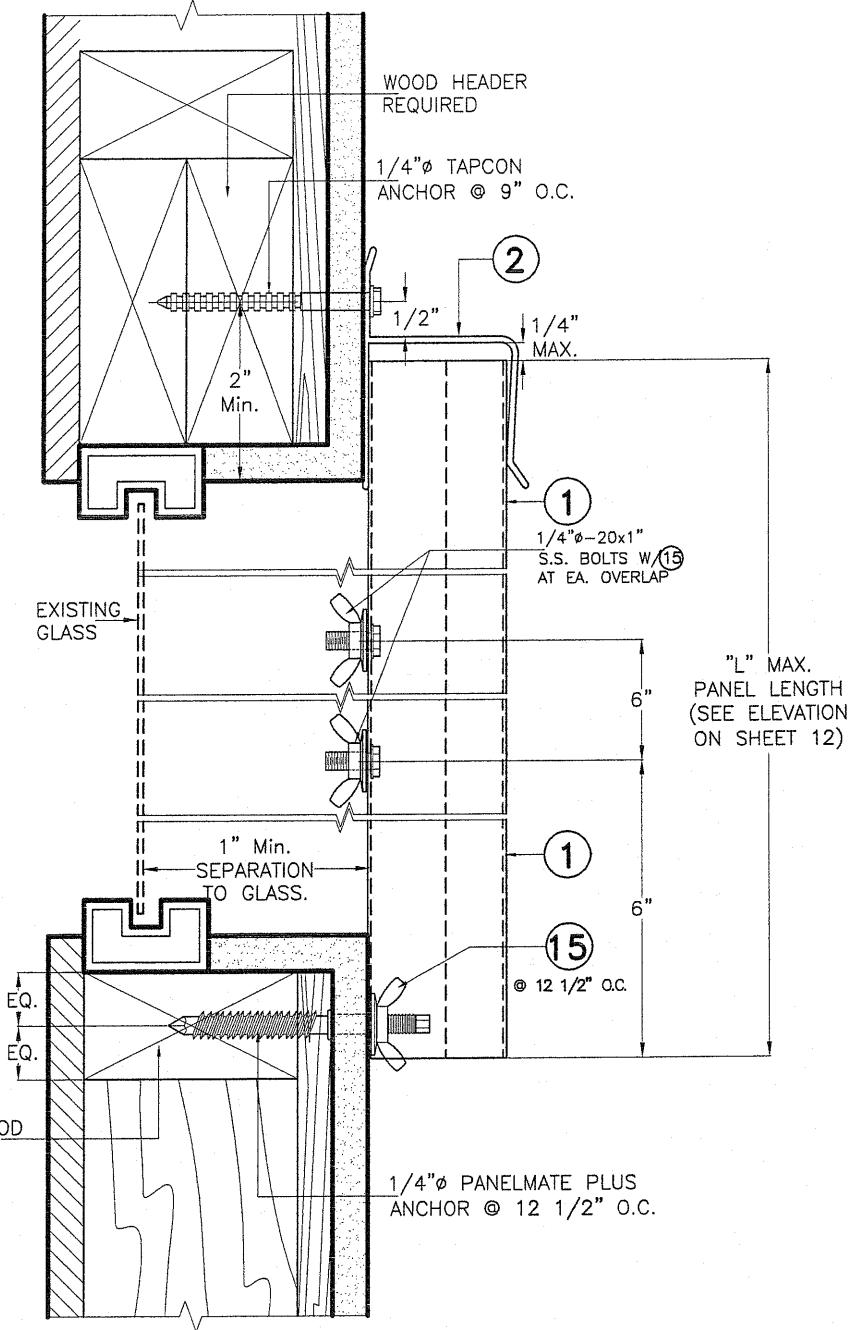
REV. No	DESCRIPTION	DATE	REV. No	DESCRIPTION	DATE
1	OLD 08-238	12/05/11	3	-	-
2	-	-	4	-	-

SHEET 15 OF 18

INSTALLATION DETAILS FOR LIFE SAFETY PANEL ①  
INTO WOOD STRUCTURES



ALTERNATIVE R-3AW  
© REGULAR PANELS

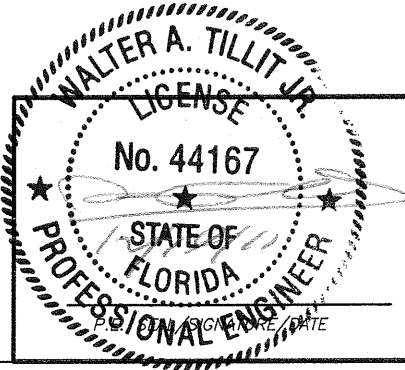


ALTERNATIVE R-3BW  
© LIFE SAFETY PANEL

WALL MOUNTINGS  
SCALE 3/8=1"

NOTES:

1. INSTALLATION ARE ONLY VALID FOR A.S.D. DESIGN WIND LOADS (p.s.f) AND PANEL LENGTHS AS PER ELEVATION ON SHEET 12.
2. FOR NEW WOOD FRAME CONSTRUCTION: WOOD MEMBERS TO BE SOUTHERN PINE No 2, W/ SPECIFIC DENSITY OF 0.55 OR EQUAL.



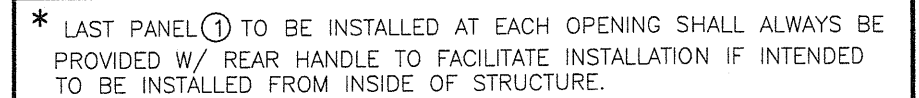
© 2011 TILTECO, INC.

**TILTECO INC.**

TILLIT TESTING & ENGINEERING COMPANY  
6355 N.W. 36th. St., Ste. 305, VIRGINIA GARDENS, FL 33166  
Phone : (305) 871-1530 . Fax : (305) 871-1531  
EB-0006719  
WALTER A. TILLIT Jr., P.E.  
FLORIDA Lic. # 44167

FLORIDA BUILDING CODE (Non High Velocity Hurricane Zone)

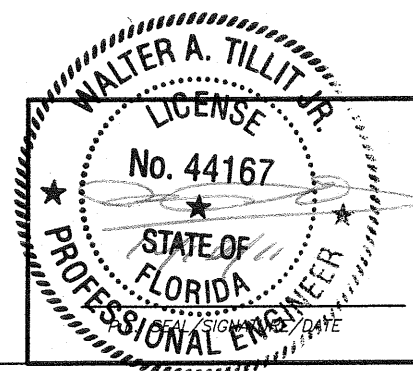
24 GAGE GALVANIZED STEEL STORM PANEL						I.A./M.C.V. R.E./A.G. DRAWN BY:
GLOBAL PROTECTION PRODUCTS, LLC.						12/05/11 DATE:
4800 S.W. 51 STREET DAVIE, FL 33314 PHONE: (954)689-7545, FAX: (954)689-8797						11-214 DRAWING No:
REV. No	DESCRIPTION	DATE	REV. No	DESCRIPTION	DATE	SHEET 16 OF 18
1	OLD 08-238	12/05/11	3	-	-	
2	-	-	4	-	-	



- (1). DEFINITION OF SERIES 2000: E-Z HANG STORM PANEL SYSTEM  
CONSISTING OF PANEL + Cont. TRACKS TOP & BOTTOM.
- (2). END PANELS SHALL ALWAYS BE CONNECTED TO BOTTOM TRACK  
OTHERWISE A STOP BAR ⑨ SHALL BE PROVIDED AT TOP OF SUCH  
PANELS.
- (3). IF END PANELS ARE CONNECTED TO BOTTOM TRACK, CONNECTION  
SHALL CONSIST OF 1/4"Ø-20x3/4" M.S. W/ 7/8"Øx3/32" WING  
NUT OR 1/4"Øx3/4" Min. THUMBSCREW INTO TAPPED BOTTOM  
TRACK. LOCATION OF FASTENERS MAY BE AT EITHER OF TWO  
EXTERIOR FLAT FLANGES OF END PANEL.
- (4). IN CASE THAT END PANELS ARE NOT CONNECTED TO BOTTOM  
TRACK (i.e. A STOP BAR IS ONLY USED AT TOP) AT LEAST TWO  
PANELS SHALL BE CONNECTED TO BOTTOM TRACK USING SPECS  
INDICATED ON NOTE (3) ABOVE. IN SUCH CASE, CONNECTION OF  
PANELS TO BOTTOM TRACK MAY OCCUR AT ANY PANEL LOCATION.

† INSTALLATIONS ONLY VALID FOR  
BASIC WIND SPEEDS UP TO 175  
m.p.h.

SCALE:  $3/32"=1"$



©2011 TILTECO, INC.

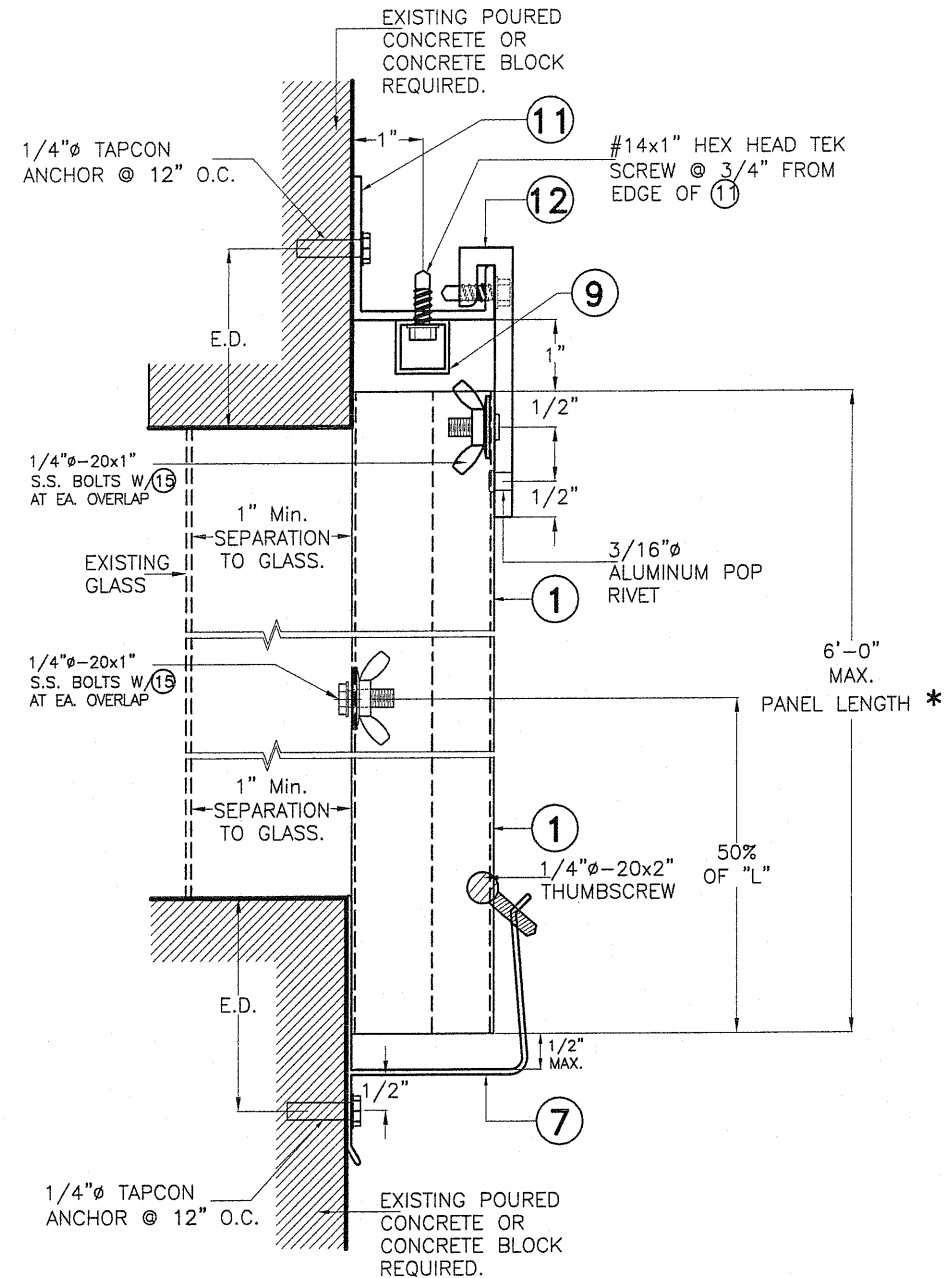
**TILTECO INC.**  
TILLIT TESTING & ENGINEERING COMPANY  
6355 N.W. 36th. St., Ste. 305, VIRGINIA GARDENS, FL 33166  
Phone : (305) 871-1930 Fax : (305) 871-1531  
EB-0006719  
WALTER A. TILLIT Jr., P.E.  
FLORIDA Lic. # 44167

REV. No	DESCRIPTION	DATE	REV. No	DESCRIPTION	DATE
1	OLD 08-238	12/05/11	3	—	—
2	—	—	4	—	—

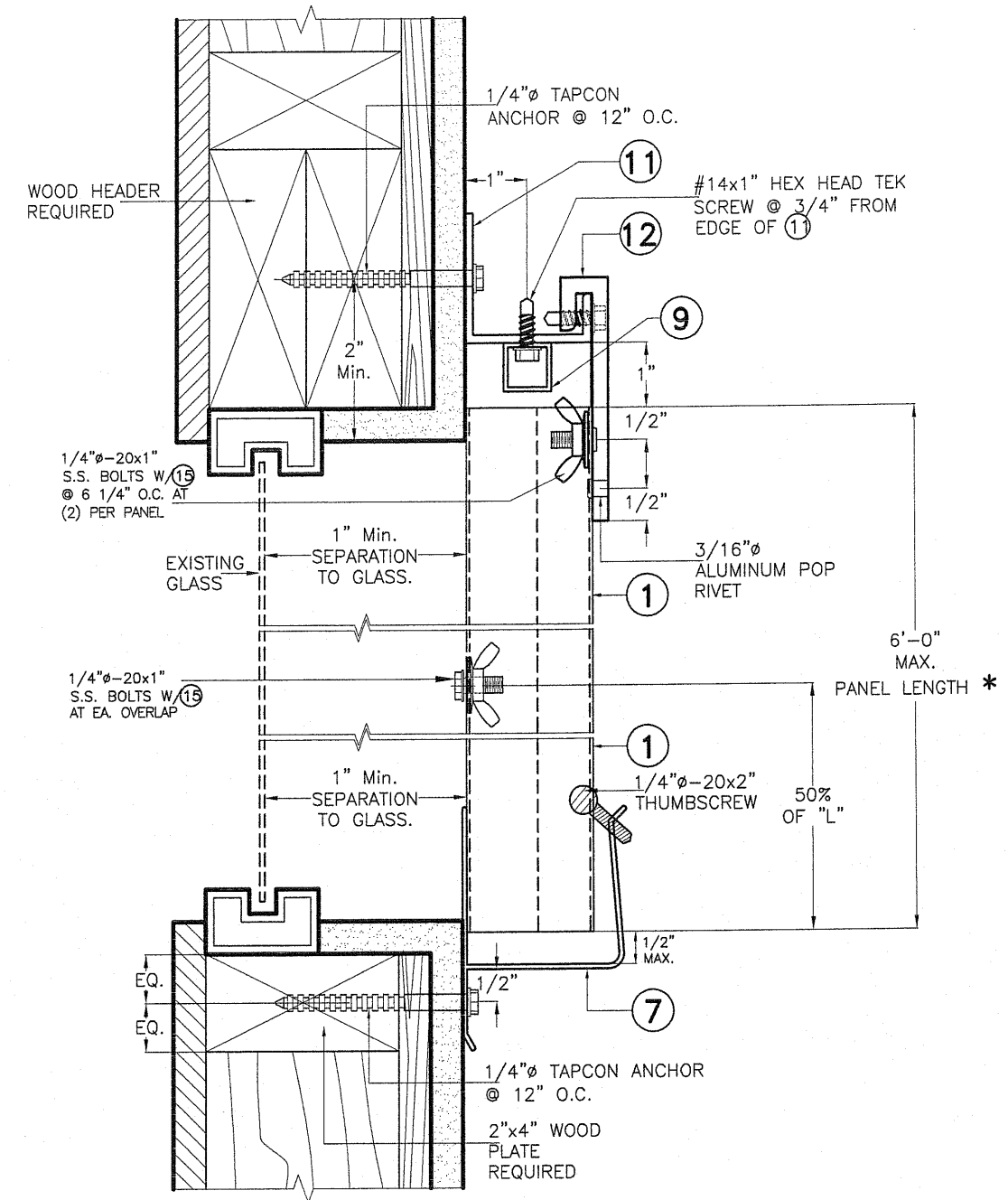
DRAWING No:

PAGE 17 OF 18

# INSTALLATION DETAILS FOR SERIES 2000 E-Z HANG STORM PANEL ① INTO POURED CONCRETE, CONCRETE BLOCK AND WOOD STRUCTURES



**WALL MOUNTING  
 SECTION EZ1**  
 SCALE 3/8=1"

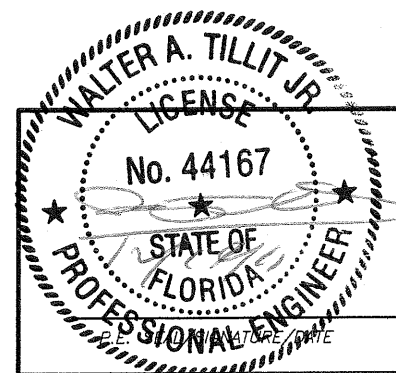


**WALL MOUNTING  
 ALTERNATIVE EZ1W**  
 SCALE 3/8=1"

## NOTES:

1. INSTALLATION ARE ONLY VALID FOR A.S.D. DESIGN WIND LOADS +/- 40.0 p.s.f. AND 6'-0" MAX PANEL LENGTH.
2. FOR NEW WOOD FRAME CONSTRUCTION: WOOD MEMBERS TO BE SOUTHERN PINE No 2, W/ SPECIFIC DENSITY OF 0.55 OR EQUAL.

\* MIN. PANEL LENGTH SHALL BE 2'-6"



© 2011 TILTECO, INC.  
**TILTECO INC.**  
 TILLIT TESTING & ENGINEERING COMPANY  
 6355 N.W. 36th. St., Ste. 305, VIRGINIA GARDENS, FL 33166  
 Phone : (305) 871-1530 . Fax : (305) 871-1531  
 EB-0006719  
 WALTER A. TILLIT Jr., P.E.  
 FLORIDA Lic. # 44167

FLORIDA BUILDING CODE (Non High Velocity Hurricane Zone)

24 GAGE GALVANIZED STEEL STORM PANEL

**GLOBAL PROTECTION PRODUCTS, LLC.**

4800 S.W. 51 STREET  
 DAVIE, FL. 33314

PHONE: (954)689-7545, FAX: (954)689-8797

I.A./M.C.V.  
 R.E./A.G.  
 DRAWN BY:

12/05/11  
 DATE:

11-214

DRAWING No:

REV. No	DESCRIPTION	DATE	REV. No	DESCRIPTION	DATE
1	OLD 08-238	12/05/11	3	-	-
2	-	-	4	-	-

SHEET 18 OF 18