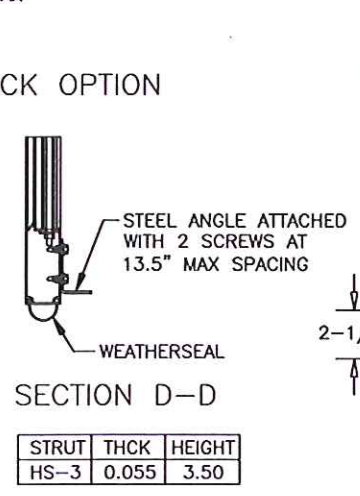
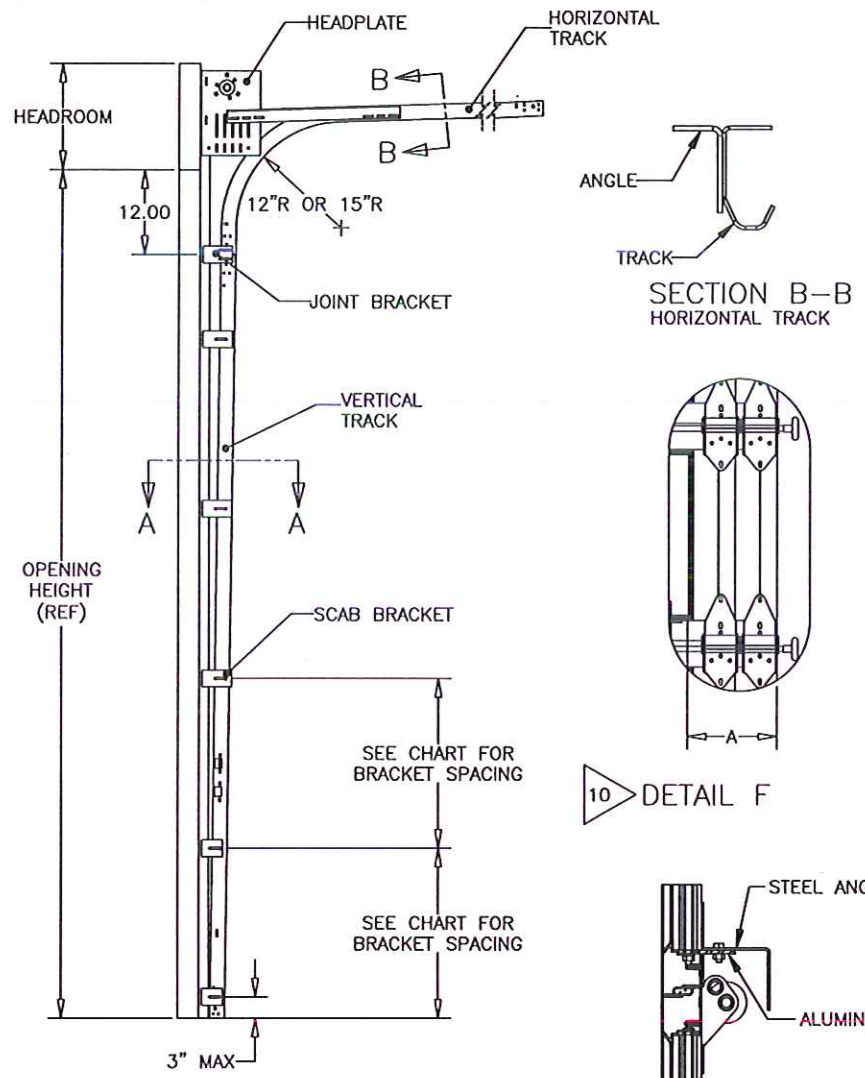
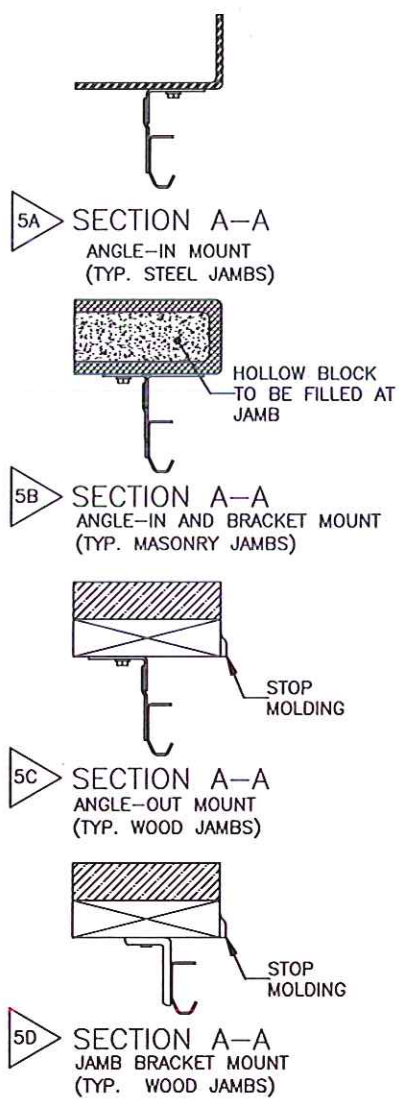
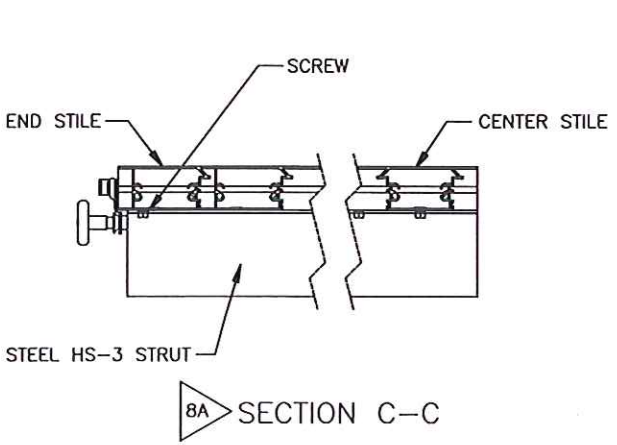


NOTES

- DESIGNED AND TESTED IN ACCORDANCE WITH WIND LOAD PROVISIONS OF THE FLORIDA BUILDING CODE AND INTERNATIONAL BUILDING CODE PER ANSI/DASMA 108 AND ANSI/DASMA 115. PROFESSIONAL ENGINEER'S SEAL PROVIDED ONLY FOR VERIFICATION OF WIND LOAD CONSTRUCTION DETAILS.
- PRESSURES LISTED AS POSITIVE/NEGATIVE (DESIGN).
- SECTION HEIGHTS MAY VARY TO CREATE VARIOUS DOOR HEIGHTS, 30-1/2" MAXIMUM SECTION HEIGHT.
- LIFT CLEARANCE OR FULL VERTICAL TRACK MAY ALSO BE USED. LOW HEADROOM TRACK MAY BE USED WITH EITHER DRAWBAR OPERATOR OR LOCK. LOW HEAD ROOM USES A 7/16" DIAMETER ROLLER SHAFT.
- FASTENING METHODS (TRACK TO WALL), SPACING BASED ON BRACKET SPACING (SEE CHART BELOW):



SIDE ELEVATION OF WALL ANGLE TRACK OPTION

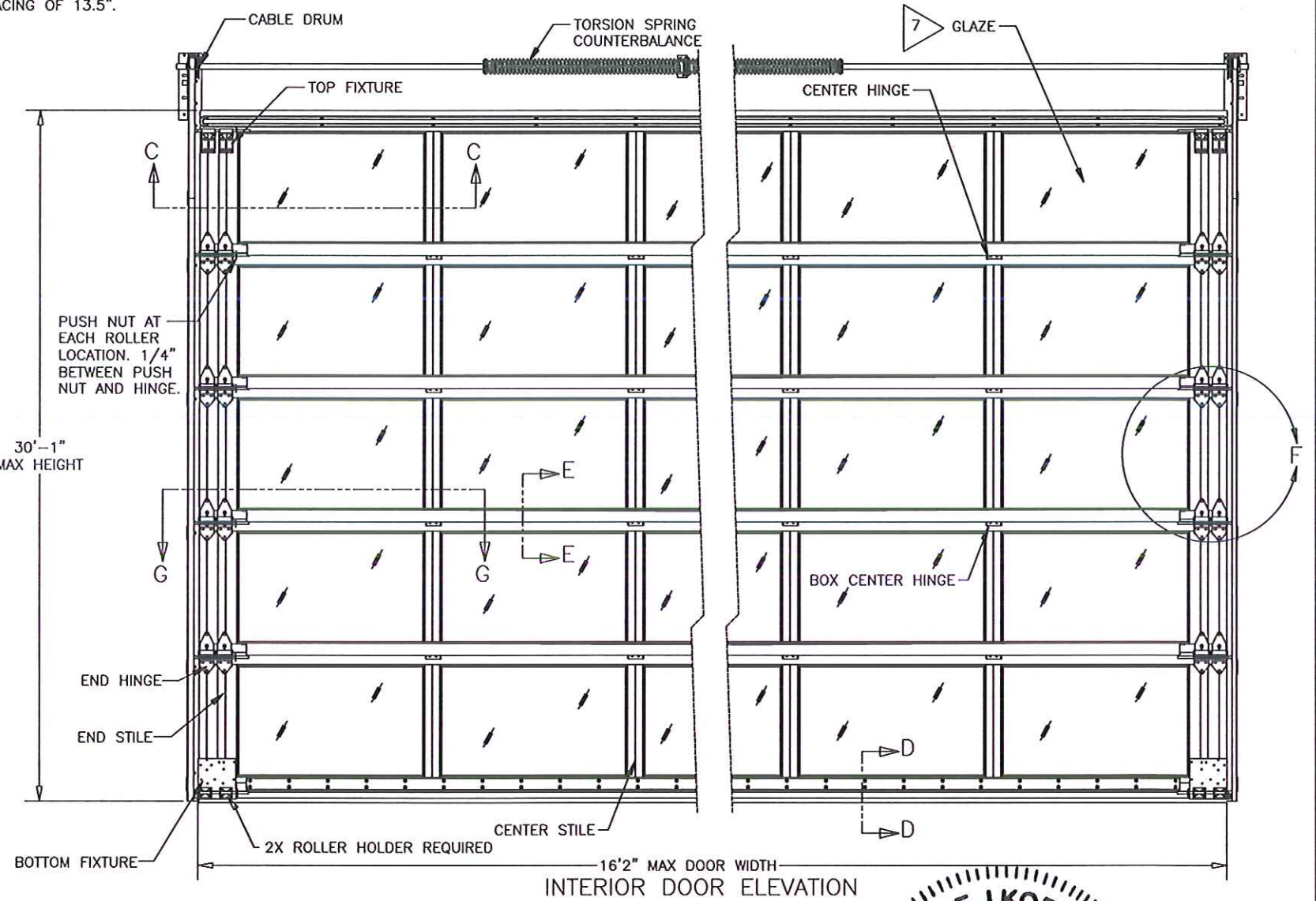


- ANGLE-IN (TYP STEEL JAMBS) STYLE TRACK-- WELD SLOT ON ANGLE, OR WELD HEEL OF THE ANGLE, OR BOLT THRU WITH 5/16" BOLT, OR EQUIVALENT.
- ANGLE-IN AND JAMB BRACKETS (TYP MASONRY JAMBS) STYLE TRACK -- 3/8" SIMPSON TITEN HD WITH MAX 24" SPACING. MINIMUM EMBEDMENT DEPTH OF 2-3/4" AND A MINIMUM EDGE DISTANCE OF 2-3/4".
- ANGLE-OUT (TYP WOOD JAMBS) STYLE TRACK-- 5/16" x 1 3/4" LAG BOLT, OR EQUIVALENT. IF ANGLE IN ON MASONRY JAMBS SEE NOTE 5B.
- JAMB BRACKETS (TYP WOOD JAMBS) STYLE TRACK-- 5/16" x 1 3/4" LAG BOLT, OR EQUIVALENT.

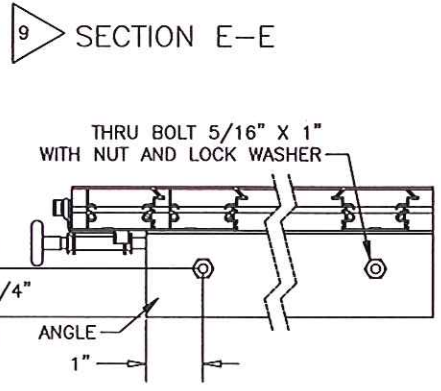
- FOR COMMERCIAL HARDWARE DETAILS SEE DRAWING 408717.
- GLAZING IS 1/4" POLYCARBONATE WITH A MAX GLAZING SIZE OF 23" HEIGHT BY 50" WIDTH. GLAZING RETAINER TO BE ATTACHED TO SECTION WITH #8 X 1" SCREWS WITH A MAX SPACING OF 6"
- STRUT OR ANGLE INSTALLATION:
 - FOR STRUTS ONLY-- USE 2 SCREWS AT BOTH END OF STRUT, 2 ON EACH CENTER HINGE LOCATION, AND 2 BETWEEN EACH HINGE.
 - FOR ANGLES ATTACHED TO FIN ONLY-- 1 - 5/16" BOLT EACH END AND WITH A MAX SPACING OF 13.5".

- ANGLE LEG IS TURNED DOWN.
- 22 GAUGE X 16" LONG REINFORCING C-RAIL INSERTED IN THE ALUMINUM EXTRUSION AT THE BOTTOM OF EACH SECTION EXCEPT BOTTOM SECTION.

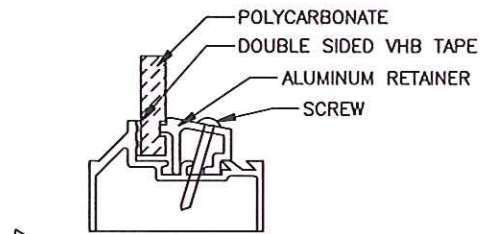
REVISIONS				
EN	REV	DESCRIPTION	DATE	APPROVAL



INTERIOR DOOR ELEVATION



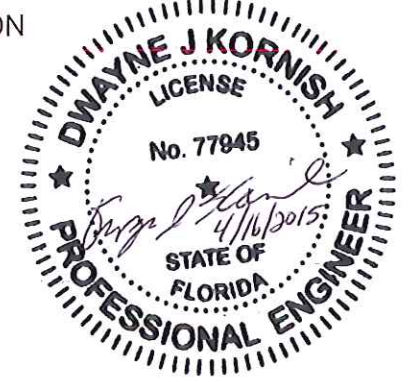
SECTION E-E POLYCARBONATE RETAINER



SECTION E-E POLYCARBONATE RETAINER

DOOR WIDTH	JAMB LOAD LB/FT (HEIGHT)
16'2"	+388/-437
14'2"	+340/-329
12'2"	+292/-329
10'2"	+244/-275
8'2"	+196/-221

DOOR WIDTH UP TO	IMPACT RESISTANT	END STILE QTY	ANGLE/SECT		STRUT AT TOP	ROLLER			TRACK		
			QTY	TYPE		TYPE	TIRE DIA.	STEM DIA.	BRACKET MAX SPACING	VERTICAL GAGE	HARDWARE
16'2"	YES	DOUBLE	1	3 X 2 X 3/16	HS-3	TR-5	2"	5/8"	12"	0.090"	HEAVY



DWAYNE KORNISH
ONE DOOR DRIVE
MT. HOPE, OH 44660
FL PE 77945
TX PE 117868

THE DRAWINGS AND ALL OTHER INFORMATION CONTAINED HEREIN ARE THE CONFIDENTIAL AND PROPRIETARY PROPERTY OF OVERHEAD DOOR CORPORATION AND ITS AFFILIATED COMPANIES. THIS DRAWING AND INFORMATION, IN WHOLE OR IN PART, MAY NOT BE COPIED IN ANY MANNER OR DISCLOSED TO ANYONE WITHOUT THE PRIOR WRITTEN CONSENT OF OVERHEAD DOOR CORPORATION. NO DISCLOSURE OF ANY OF THIS DRAWING OR INFORMATION IS INTENDED TO OPERATE AS A LICENSE OR AUTHORIZATION TO USE IT FOR ANY PURPOSE WITHOUT THE SPECIFIC WRITTEN CONSENT OF OVERHEAD DOOR CORPORATION.

REF DWG	USED ON	TOLERANCES UNLESS OTHERWISE SPECIFIED	FINISH	NAME	DATE	DRAWING TITLE
		WHOLE NUMBERS: ± .25	N/A	DRAWN BY:	10/20/14	WINDLOAD, 521, 48/-54 PSF, 16'-2" MAX
		.X ± .1		CHECKED BY:		D-411368
		.XX ± .03		APPROVED BY:		SCALE: N/A
		.XXX ± .010				SHEET 1 OF 1
		ANGLES: ± .5°				
		HOLES: ±				