

UP TO 12'-2" WIDE X 18'-0" HIGH (MAX. SIZE)

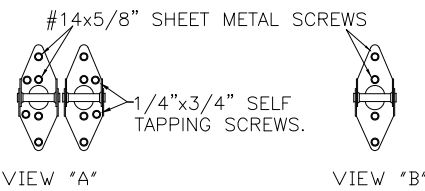
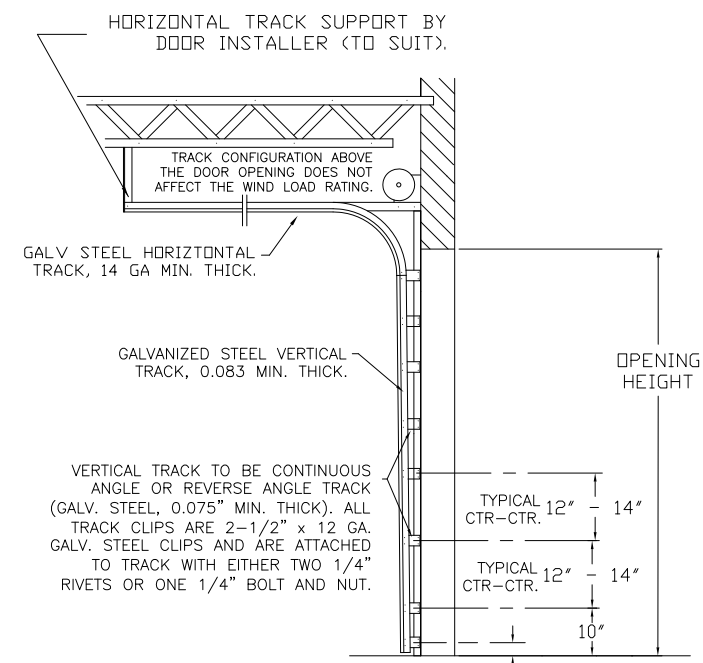
PAGE 1 OF 1

REVISIONS

REV. NO.	ZONE:	DATE:	ECN NO.	APPVD:	DESCRIPTION
07	--	11/2008	--	--	ADDED IMPACT RESISTANT GLAZING.

MODELS AVAILABLE

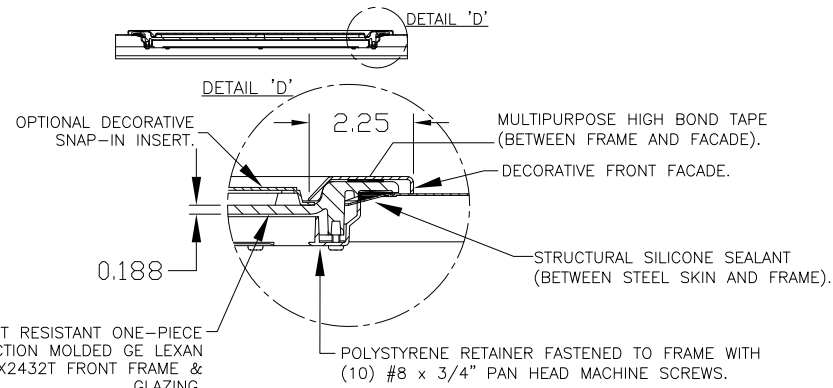
- CLOPAY MODEL 3200 (24 GA MIN EXT SKIN WITH MINOR RIBS).
- CLOPAY MODEL 3205 (24 GA MIN EXT SKIN FLUSH).
- CLOPAY MODEL 3220 (20 GA MIN EXT SKIN WITH MINOR RIBS).
- HOLMES MODEL 240, 240G (24 GA MIN EXT SKIN WITH MINOR RIBS).



14 GA. DOUBLE END HINGES ATTACH ON EACH HINGE AS SHOWN (4) #14 X 5/8" LG. SHT. MTL. SCREWS AND (2) 1/4"x3/4" SELF-TAPPING SCREWS.

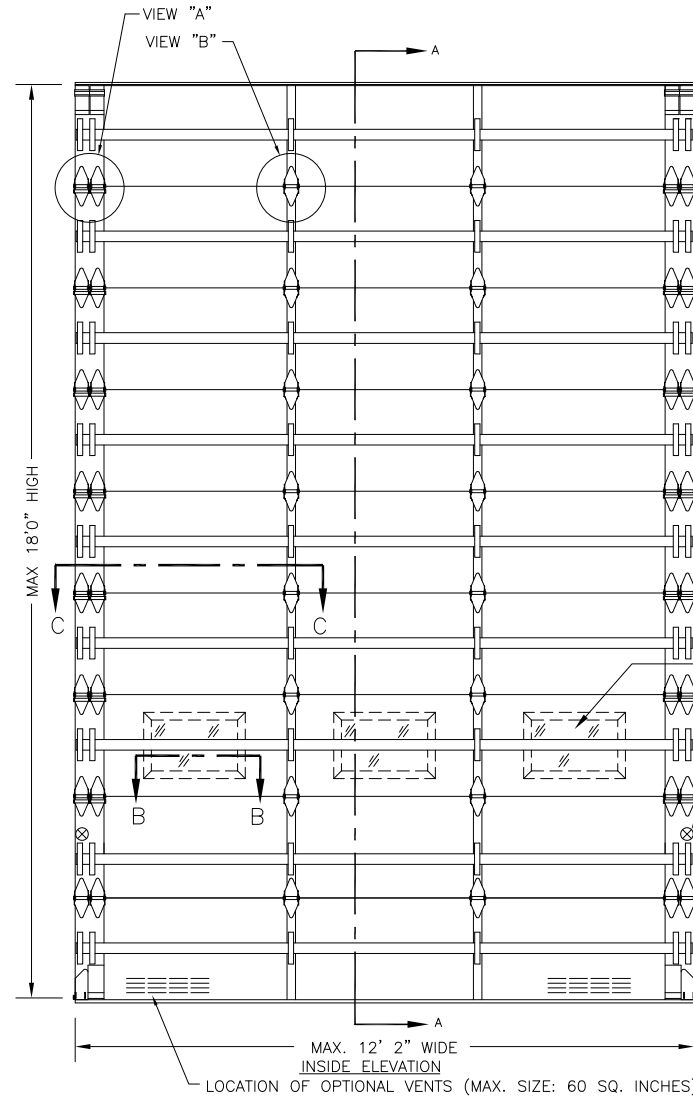
14 GA. INTERMEDIATE HINGE ATTACH ON EACH HINGE AS SHOWN WITH (4) 1/4" X 5/8" SHEET METAL SCREWS.

SECTION B-B (IMPACT-RESISTANT GLAZING OPTION)

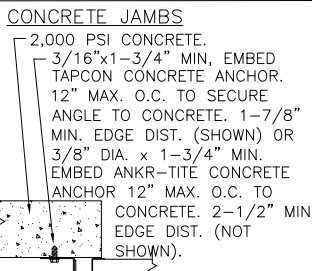
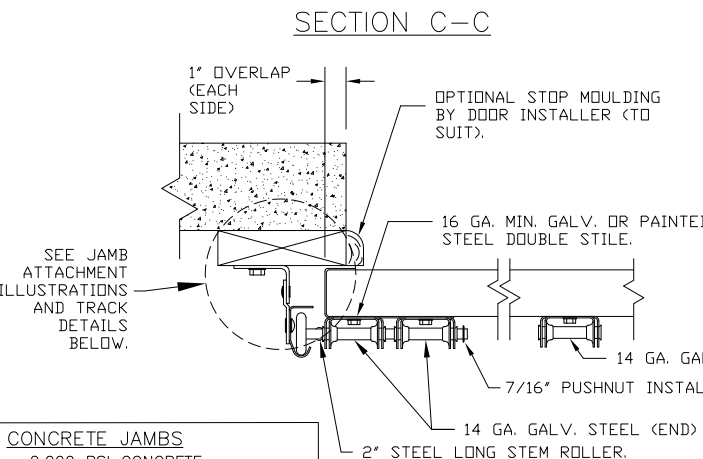
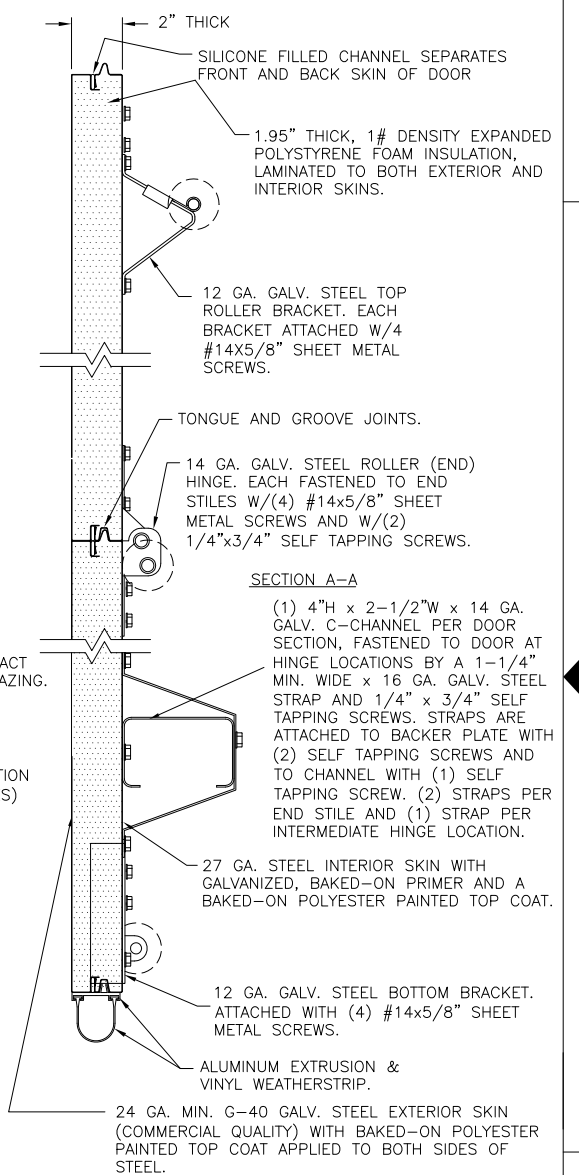


THIS DOOR MEETS THE REQUIREMENTS OF THE LARGE MISSILE IMPACT AND CYCLIC TESTING.

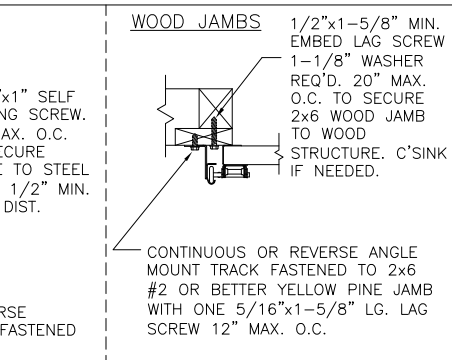
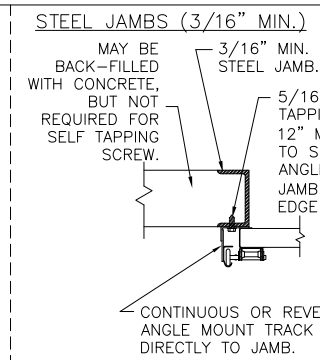
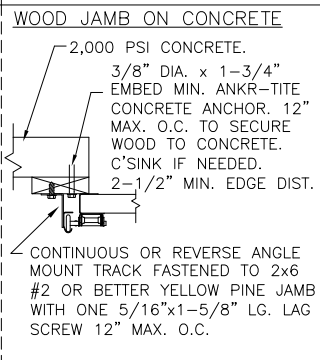
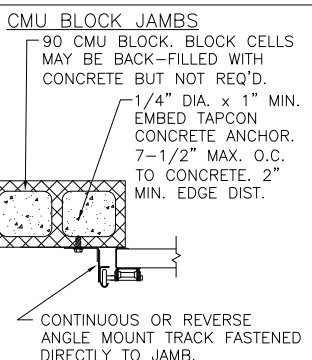
DOOR HEIGHT 'A'	NUMBER OF SECTIONS
8'-0"	4
8'-3" THRU 10'-0"	5
10'-3" THRU 12'-0"	6
12'-3" THRU 14'-0"	7
14'-3" THRU 16'-0"	8
16'-3" THRU 18'-0"	9



SECTION A-A



ANCHOR NOTE: FIRST (BOTTOM) ANCHOR SHALL BE INSTALLED AT NO MORE THAN HALF OF THE MAXIMUM ON-CENTER DISTANCE. HIGHEST ANCHOR SHALL BE INSTALLED AT LEAST AS HIGH AS THE DOOR OPENING. HORIZONTAL JAMBS DO NOT TRANSFER LOAD.



- NOTES:
- A 1/3 STRESS INCREASE FOR WIND LOAD WAS NOT USED IN THE CALCULATION OF ALLOWABLE LOADS FOR ANCHORS AND FASTENERS FOR STEEL, CONCRETE AND MASONRY.
 - THE PRODUCT, INSTALLED IN COMPLIANCE WITH THE CONDITIONS SHOWN ON THIS DRAWING, COMPLIES WITH THE 2007 FLORIDA BUILDING CODE.

ATTENTION: THE DESIGN OF THE SUPPORTING STRUCTURAL ELEMENTS ARE THE RESPONSIBILITY OF THE PROFESSIONAL OF RECORD FOR THE BUILDING OR STRUCTURE AND IN ACCORDANCE WITH CURRENT BUILDING CODES FOR THE LOADS LISTED ON THIS DRAWING.

Unless Stated Otherwise TOLERANCES are

.0 = ±.031
.00 = ±.015
.000 = ±.005
.0000 = ±.001
Degrees = ±1/2"

Unless Stated Otherwise DIMENSIONS ARE IN INCHES.

DESIGN LOADS: +52.0 P.S.F. & -58.0 P.S.F.
TEST LOADS: +78.0 P.S.F. & -87.0 P.S.F.

DESIGN ENGINEER
MARK W. WESTERFIELD, P.E.
FLORIDA P.E. #48495, NC P.E. #23832, TEXAS P.E. #91513

MANUFACTURING PRODUCT CODE:
MPC: C-DSIE-1F447
PART NO.: N/A

8585 Duke Boulevard
Mason, OH 45040 USA
Tel. No. 513-770-4800
Fax No. 513-770-4853

WINDLOAD RATING W8	
DESCRIPTION: COMMERCIAL EPS DOOR, +52/-58 PSF DESIGN LOAD	
DRAWN BY: RJK	DATE: 11/13/02 SCALE: NTS
CHECKED BY: MWW	DATE: 11/02 SHEET 1 OF 1
DWG. NO.: 101705	VER: IBC