

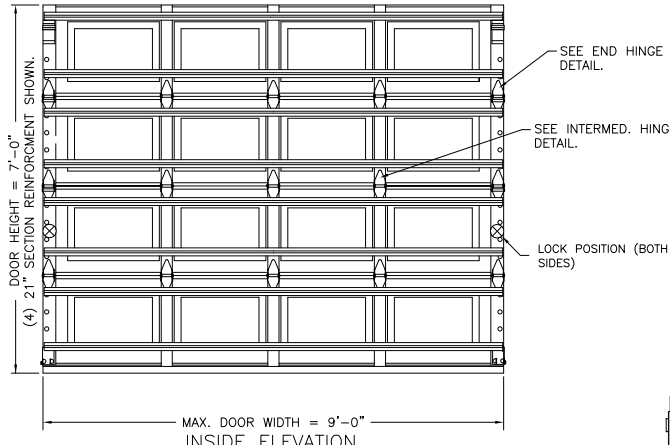
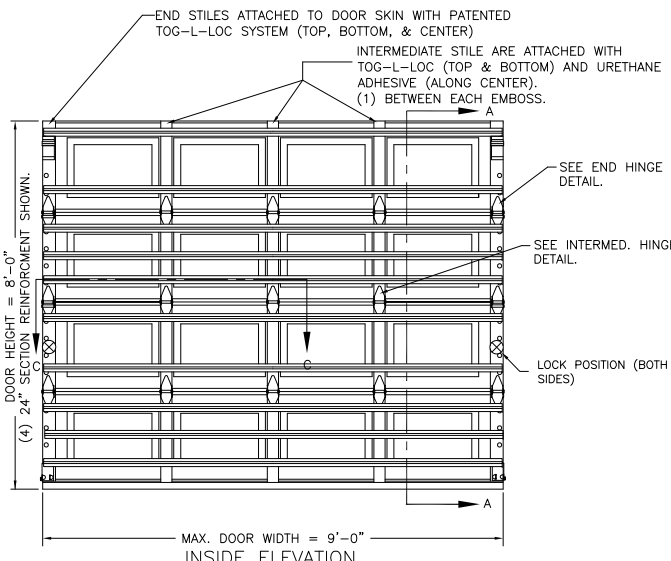
MODELS	STANDARD		INSULATED	
	CLOPAY	G4S, GS4, GD4S, GR4S	G4SV, GS4V, GD4SV, GR4SV	
IDEAL	E4S, ED4S, MR4S	E4SV, ED4SV, MR4SV		
HOLMES	SS4, AR4S	SS4V, AR4SV		

TABLE 1

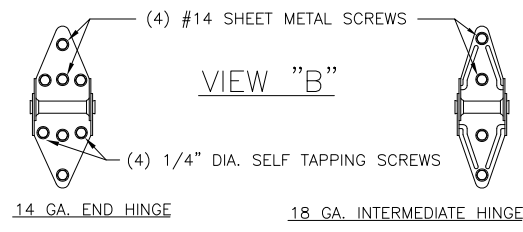
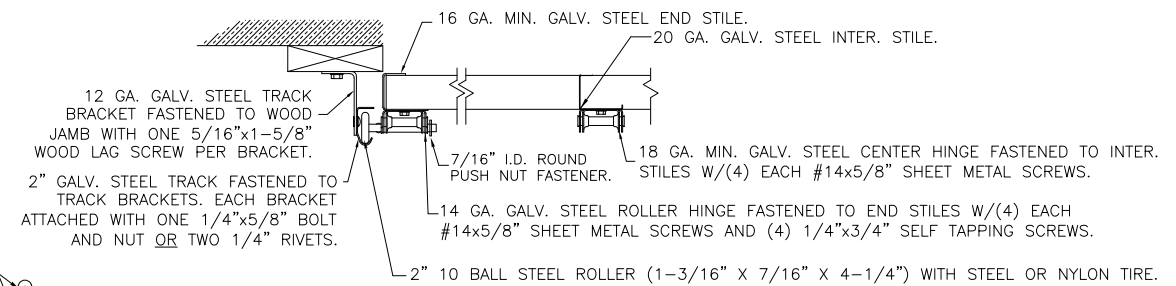
DOOR HEIGHT	NUMBER OF SECTIONS*
6'3" TO 8'0"	4
8'3" TO 10'0"	5
10'3" TO 12'0"	6
12'3" TO 14'0"	7
14'3" TO 16'0"	8

\* SECTION ARE MAX 24" HIGH

REVISIONS					
REV. NO.	ZONE:	DATE:	ECN NO.	APPVD:	DESCRIPTION
00	-	12/1/08	-	-	INITIAL RELEASE.



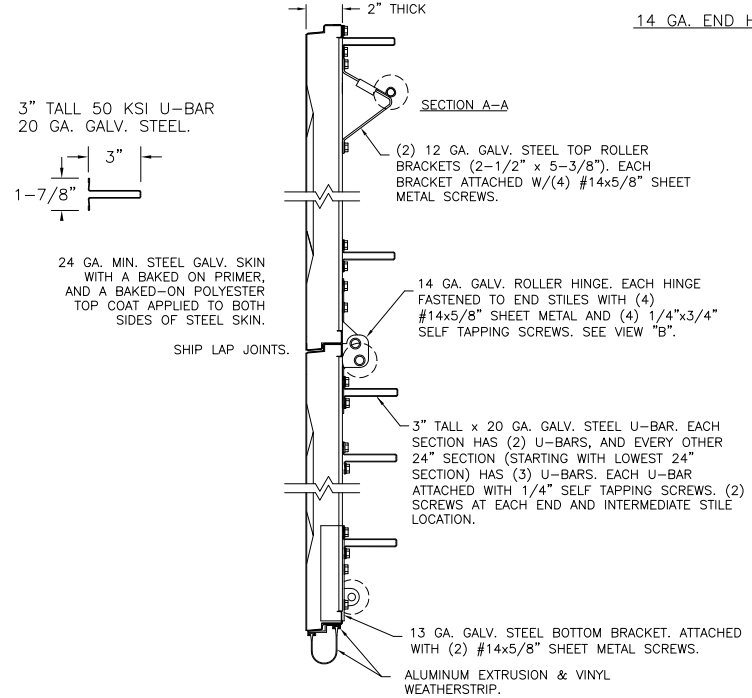
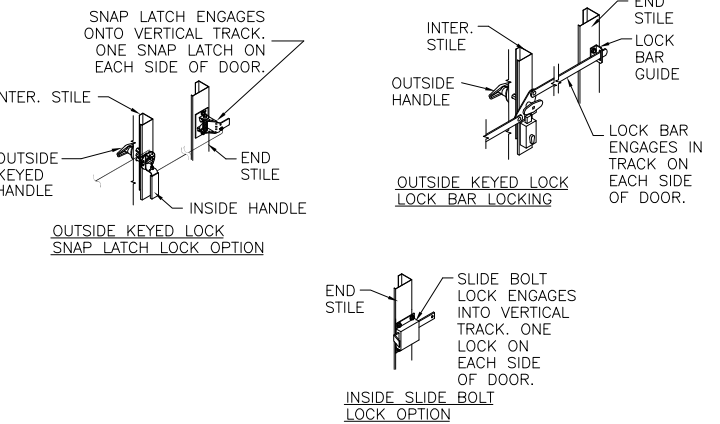
SECT C-C



VIEW "B"

PREPARATION OF JAMBS BY OTHERS

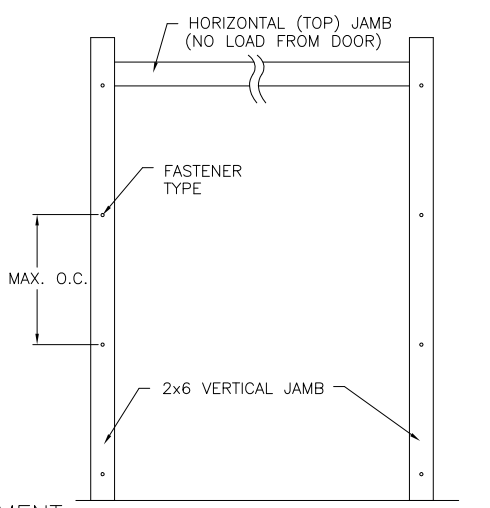
NOTE: THE DESIGN OF THE SUPPORTING STRUCTURAL ELEMENTS SHALL BE THE RESPONSIBILITY OF THE PROFESSIONAL OF RECORD FOR THE BUILDING OR STRUCTURE AND IN ACCORDANCE WITH CURRENT BUILDING CODES FOR THE LOADS LISTED ON THIS DRAWING.



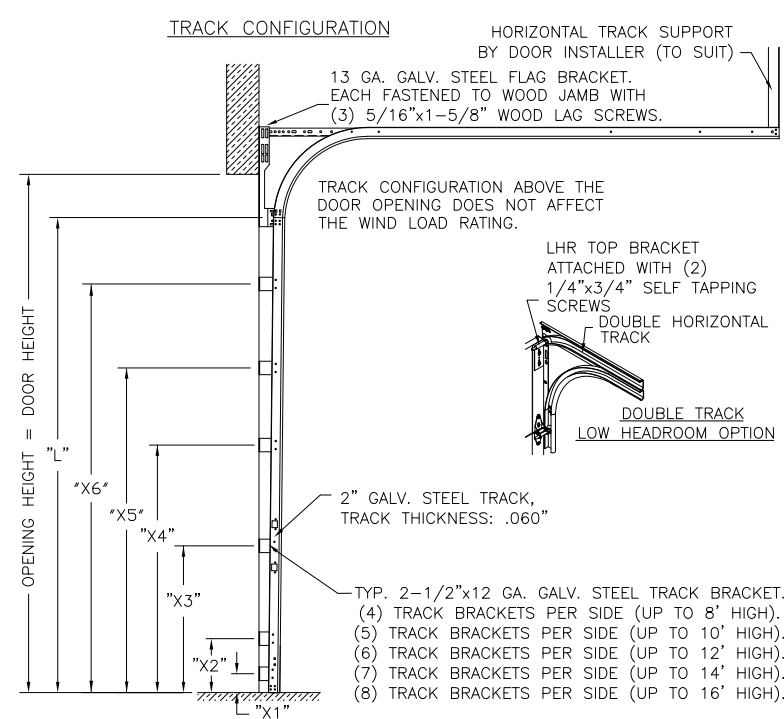
- NOTES:
- ALL THE LOAD FROM THE DOOR IS TRANSFERRED TO THE TRACK AND THEN FROM THE TRACK TO THE 2x6 VERTICAL SYP (GRADE #2 OR BETTER) JAMBS. NO LOAD FROM THE DOOR IS TRANSFERRED TO THE HORIZONTAL (TOP) JAMB.
  - ALL JAMB FASTENERS MAY BE (BUT ARE NOT REQUIRED TO BE) COUNTERSUNK TO PROVIDE A FLUSH MOUNTING SURFACE.
  - A 1/3 STRESS INCREASE FOR WIND LOAD WAS NOT USED IN THE CALCULATION OF ALLOWABLE LOADS FOR ANCHORS AND FASTENERS FOR STEEL, CONCRETE AND MASONRY.

NOTE: SUPPORTING STRUCTURAL ELEMENTS SHALL BE DESIGNED BY A REGISTERED PROFESSIONAL ENGINEER FOR WIND LOADS SHOWN ON THIS DRAWING.

THE 2x6 VERTICAL WOOD JAMBS ARE TO BE GRADE 2 OR BETTER YELLOW PINE. NO LOAD IS TRANSFERRED TO THE HORIZONTAL (TOP) JAMB. ALL JAMB FASTENERS MAY BE (BUT NOT REQUIRED) COUNTERSUNK TO PROVIDE A FLUSH MOUNTING SURFACE.



2x6 JAMB TO SUPPORTING STRUCTURE ATTACHMENT



DOOR HEIGHT	BRACKET PLACEMENTS								
	"L"	"X1"	"X2"	"X3"	"X4"	"X5"	"X6"	"X7"	"X8"
6'-6"	70"	3-1/2"	10"	35"	60"	-	-	-	-
7'-0"	76"	3-1/2"	10"	38"	66"	-	-	-	-
7'-6"	82"	3-1/2"	10"	34"	58"	-	-	-	-
8'-0"	88"	3-1/2"	10"	34"	58"	-	-	-	-
8'-6"	94"	3-1/2"	10"	34"	58"	82"	-	-	-
9'-0"	100"	3-1/2"	10"	34"	58"	82"	-	-	-
9'-6"	106"	3-1/2"	10"	34"	58"	82"	-	-	-
10'-0"	112"	3-1/2"	10"	34"	58"	82"	-	-	-
10'-6"	118"	3-1/2"	10"	34"	58"	82"	106"	-	-
11'-0"	124"	3-1/2"	10"	34"	58"	82"	106"	-	-
11'-6"	130"	3-1/2"	10"	34"	58"	82"	106"	-	-
12'-0"	136"	3-1/2"	10"	34"	58"	82"	106"	-	-
12'-6"	142"	3-1/2"	10"	34"	58"	82"	106"	130"	-
13'-0"	148"	3-1/2"	10"	34"	58"	82"	106"	130"	-
13'-6"	154"	3-1/2"	10"	34"	58"	82"	106"	130"	-
14'-0"	160"	3-1/2"	10"	34"	58"	82"	106"	130"	-
14'-6"	166"	3-1/2"	10"	34"	58"	82"	106"	130"	154"
15'-0"	172"	3-1/2"	10"	34"	58"	82"	106"	130"	154"
15'-6"	178"	3-1/2"	10"	34"	58"	82"	106"	130"	154"
16'-0"	184"	3-1/2"	10"	34"	58"	82"	106"	130"	154"

BUILDING TYPE	FASTENER TYPE	MAXIMUM * ON CENTER DISTANCE BETWEEN FASTENERS	STEEL WASHERS REQUIRED?
C-90 BLOCK (HOLLOW OR GROUTED)	1/4" x 3" (1-1/4" EMBED) ITW TAPCON CONCRETE ANCHOR (2-1/2" MIN. EDGE DISTANCE)	7"	1" O.D.
2,000 PSI MIN. CONCRETE	1/4" x 4" (1-3/4" EMBED) ITW TAPCON CONCRETE ANCHOR (2-1/2" MIN. EDGE DISTANCE)	14-1/4"	1" O.D.
3,000 PSI MIN. CONCRETE	1/2" x 4" (2-1/4" EMBED) SIMPSON STRONG-TIE WEDGE-ALL WEDGE ANCHOR (2" MIN. EDGE DISTANCE)	14-1/2"	INCLUDED
2,000 PSI MIN. CONCRETE	1/2" x 4" (2-1/2" EMBED) WEJ-IT SLEEVE ANCHOR (2-1/2" MIN. EDGE DISTANCE)	16"	INCLUDED
WOOD FRAME	1/2" x 4" (1-5/8" EMBED) LAG SCREW (ASTM A307, GRADE A) (2-1/2" MIN. EDGE DISTANCE)	16-3/4"	1" O.D.

\* - FIRST ANCHOR/SCREW STARTING FROM BOTTOM AT NO MORE THAN HALF OF MAXIMUM ON CENTER DISTANCE. HIGHEST ANCHOR/SCREW INSTALLED AT LEAST AS HIGH AS THE DOOR OPENING HEIGHT. DESIGN LOADS: +50.0 PSF -58.0 PSF. TEST LOADS: +75.0 PSF -87.0 PSF.

THIS DOOR MEETS THE REQUIREMENTS OF THE LARGE MISSILE IMPACT AND CYCLIC TESTING.

THIS DOOR MEETS OR EXCEEDS THE DESIGN LOADS FOR THE WIND SPEEDS LISTED BELOW ACCORDING TO THE FLORIDA BLDG. CODE OR IBC (ASCE7) FOR THE FOLLOWING CONDITIONS: 1) ENCLOSED BUILDING, 2) DOOR HAS 2' OF WIDTH IN BUILDING'S END ZONE, 3) IMPORTANCE FACTOR OF 1.0, 4) ANY ROOF SLOPE, AND 5) 50% SAFETY FACTOR.

WIND SPEED (MPH)	B or C	B	C
≤ 140	150	150	
EXPOSURE LEVEL	B or C	B	C
MEAN ROOF HEIGHT	30'	30'	25'

MANUFACTURING PRODUCT CODE: PAN-2F443

DESIGN ENGINEER: MARK W. WESTERFIELD, P.E. FLORIDA P.E. #48495, NC P.E. #23832, TEXAS P.E. #91513

8585 Duke Boulevard Mason, OH 45040 USA Tel. No. 513-770-4800 Fax No. 513-770-4853

CLOPAY WINDLOAD RATING W8

DESCRIPTION: 2" SINGLE CAR GALLERY 24GA PAN

DRAWN BY: BFA DATE: 7/08/08 SCALE: NONE DWG. B

CHECKED BY: SH DATE: 07/08/08 SHEET 1 OF 1 SIZE B

DWG. NO.: 104121 VER: IBC