

**Southern Extrusion, Inc.**

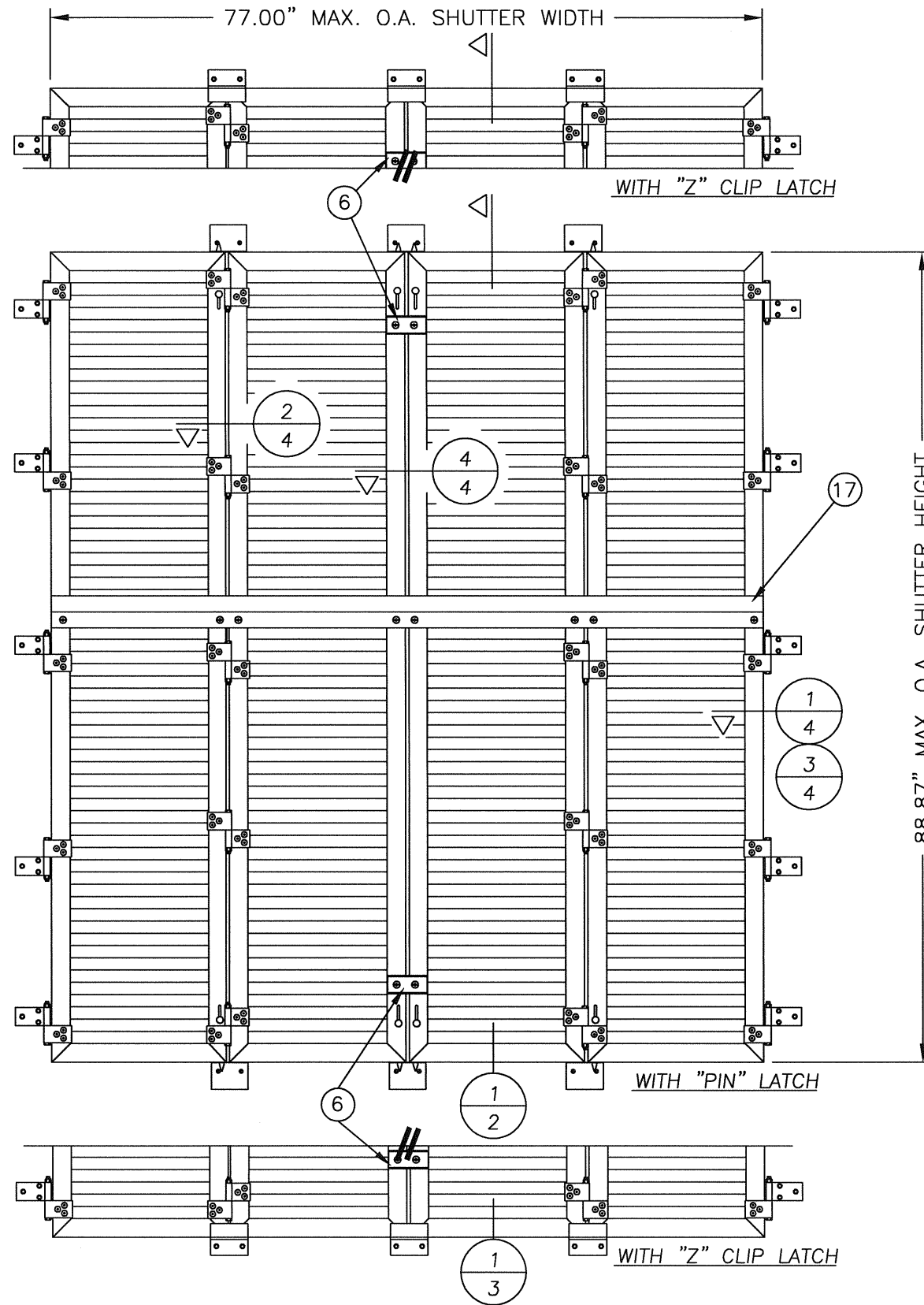
3401 W. NAVY BLVD. PENSACOLA, FL. 32505  
 TEL: 850-432-2485 FAX.: 850-432-2486

# EXTRUDED ALUMINUM COLONIAL HURRICANE SHUTTER "IMPACT"

GENERAL NOTES

1. This product has been evaluated and is in compliance with the 2007 Florida Building Code structural requirements excluding the "High Velocity Hurricane Zone".
2. Product anchors shall be as listed and spaced as shown on details. Anchor embedment to base material shall be beyond wall dressing or stucco.
3. When used in areas outside of the "HVHZ" requiring wind borne debris protection this product complies with section 1609.1.2 of the Florida Building Code and does not require an impact resistant covering. This product meets missile level "D" and includes Wind Zone 4 as defined in ASTM E1996.
4. Site conditions that deviate from the details of this drawing require further engineering analysis by a licensed engineer or registered architect.
5. Aluminum shutter material shall be 6063-T6.
6. The engineer or architect of record is responsible for determining the wind loads for any specific application and to determine that the existing structure is capable of withstanding the loads imposed by the shutter system.

TABLE OF CONTENTS	
SHEET #	DESCRIPTION
1	TYPICAL ELEVATION, DESIGN PRESSURES & GENERAL NOTES
2	VERTICAL CROSS SECTION
3	VERTICAL CROSS SECTION
4	HORIZONTAL CROSS SECTION
5	ANCHORING LOCATIONS
6	ANCHORING LOCATIONS
7	BILL OF MATERIALS & COMPONENTS



LATCH TYPE	OVERALL FRAME DIMENSION	DESIGN PRESSURE	
		POS.	NEG.
"PIN"	77.00" x 88.87"	+65	-65
"Z" CLIP	77.00" x 88.87"	+80	-90

Documents Prepared By:  
**R.W.** BUILDING CONSULTANTS, INC.  
 P.O. Box 230 Vairico FL. 33595  
 Phone No.: 813.659.9197  
 Florida Board of Professional Engineers  
 Certificate Of Authorization No. 9813  
 4-24-08  
 Wendell W. Honey, P.E. No. 54158

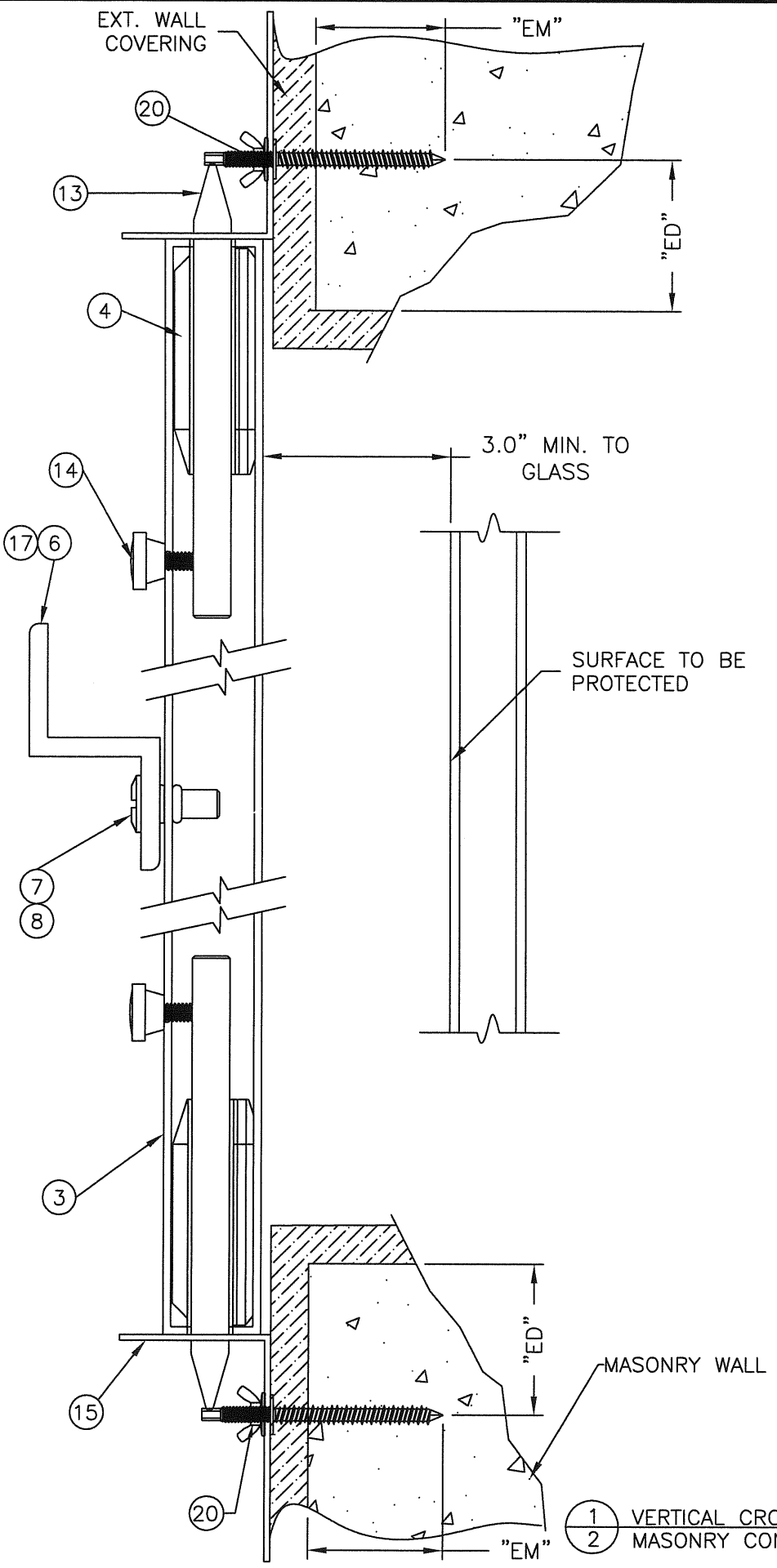
PRODUCT:  
 SOUTHERN EXTRUSIONS  
 EXTRUDED ALUMINUM  
 COLONIAL HURRICANE SHUTTER  
 PART OR ASSEMBLY:  
 TYPICAL ELEVATIONS, DESIGN  
 PRESSURES & GENERAL NOTES

NO.	DATE	BY	REVISIONS

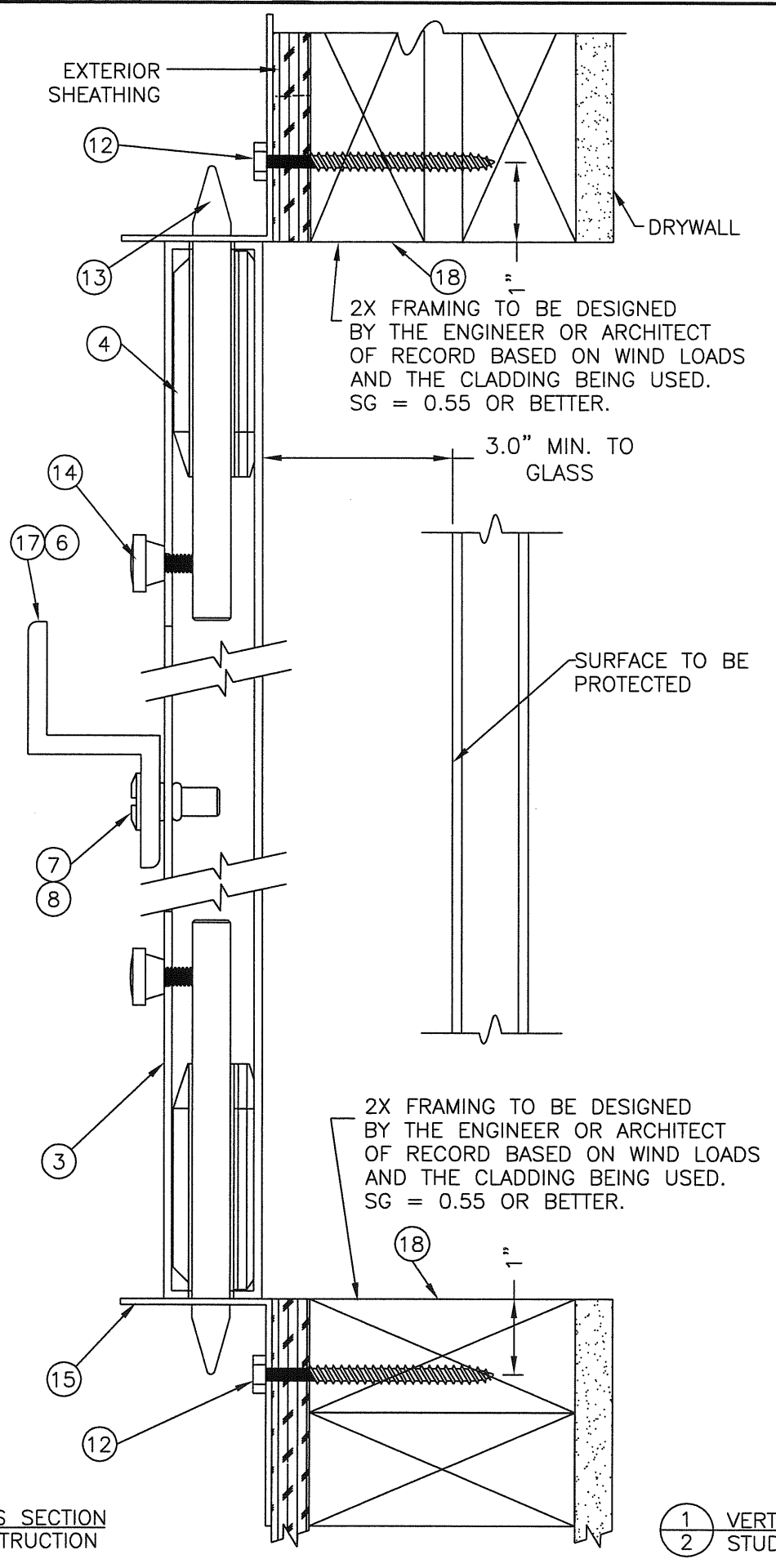
DATE: 4/22/08  
 SCALE: N.T.S.  
 DWG. BY: JK  
 CHK. BY: WWH  
 DRAWING NO.:  
 FL-9102.1  
 SHEET 1 OF 7

K:\A - Projects\Project Folders\PROJ 1201-1300\PT 1240\U.D. RWBC Drawings\FL-9102\FL-9102-2.1.dwg, Model

20 MASONRY ANCHOR SCHEDULE



1 VERTICAL CROSS SECTION MASONRY CONSTRUCTION



1 VERTICAL CROSS SECTION STUD CONSTRUCTION

2X FRAMING TO BE DESIGNED BY THE ENGINEER OR ARCHITECT OF RECORD BASED ON WIND LOADS AND THE CLADDING BEING USED. SG = 0.55 OR BETTER.

2X FRAMING TO BE DESIGNED BY THE ENGINEER OR ARCHITECT OF RECORD BASED ON WIND LOADS AND THE CLADDING BEING USED. SG = 0.55 OR BETTER.

CONCRETE CONFORMING TO ACI 301

ANCHOR
<p>1/4" SAMMY'S SSC TAPCON SG EM = 1.75" CL = 3" ED = 2.5" (3,295 psi MIN. CONC.)</p>
<p>1/4" ITW RED HEAD DYNABOLT SLEEVE ANCHOR EM = 0.875" CL = 3" ED = 1.5" (3000 psi MIN. CONC.)</p>
<p>1/4" ALL POINTS SOLID-SET ANCHOR x 7/8" EMBED EM = 0.875" CL = 3" ED = 2" (3,000 PSI MIN. CONC.)</p>
<p>1/4" POWERS FASTENER TAPPER EM = 1.75" CL = 3.0" ED = 3.0"</p>

HOLLOW BLOCK CONFORMING TO ASTM C90

ANCHOR
<p>1/4" SAMMY'S SSC TAPCON SG EM = 1.25" CL = 3" ED = 2.5"</p>
<p>1/4" ITW RED HEAD DYNABOLT SLEEVE ANCHOR EM = 0.875" CL = 3" ED = 1.5"</p>
<p>1/4" ALL POINTS SOLID-SET ANCHOR x 7/8" EMBED EM = 0.875" CL = 3" ED = 2"</p>

EM = MINIMUM EMBEDMENT (PENETRATION)  
CL = MINIMUM CENTER TO CENTER ANCHOR SPACING  
ED = EDGE DISTANCE

ED = MINIMUM EDGE DISTANCE.  
CL = MINIMUM SPACING OF ANCHOR CENTERLINE TO CENTERLINE.  
EM = MINIMUM EMBEDMENT OF ANCHOR INTO STRUCTURAL SUBSTRATE.

Documents Prepared By: **RW** BUILDING CONSULTANTS, INC.  
P.O. Box 230 Valrico FL 33595  
Phone No.: 813.659.9197  
Florida Board of Professional Engineers  
Certificate Of Authorization No. 9813  
Wendell W. Hatley, P.E. No. 54158  
4-24-08

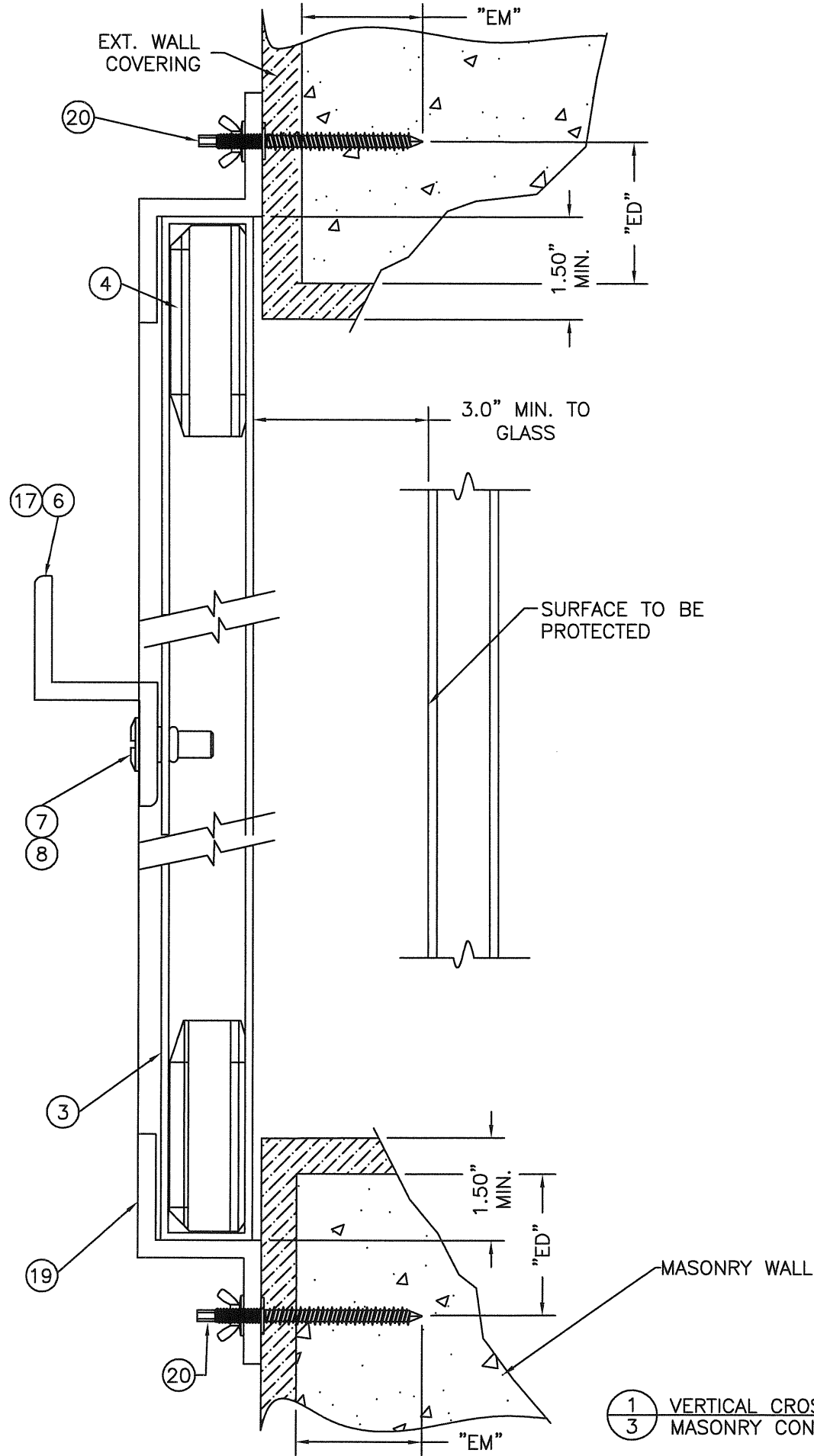
PRODUCT: SOUTHERN EXTRUSIONS  
EXTRUDED ALUMINUM  
COLONIAL HURRICANE SHUTTER  
PART OR ASSEMBLY: VERTICAL CROSS SECTIONS  
MASONRY & STUD CONSTRUCTION

NO.	DATE	BY	REVISIONS

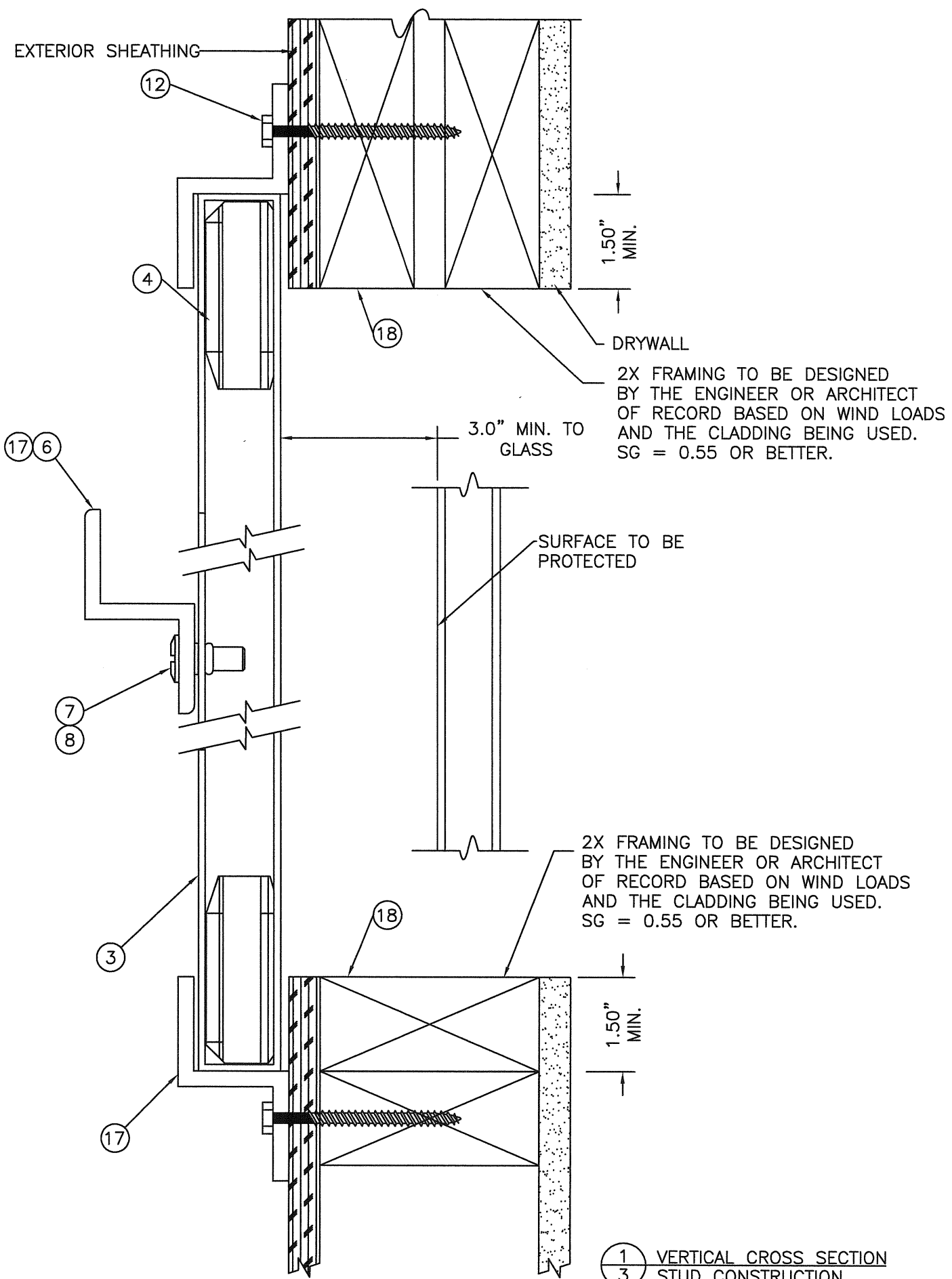
DATE: 4/22/08  
SCALE: N.T.S.  
DWG. BY: JK  
CHK. BY: WWH  
DRAWING NO.: FL-9102.1  
SHEET 2 OF 7

© 2007 R.W. BUILDING CONSULTANTS INC.

K:\A - Project\Project Roiders\Proj 1201-1500\PT 1240\U. RWBC Drawings\1- 9102\FL-9102-3.1.dwg, Model



1 VERTICAL CROSS SECTION  
3 MASONRY CONSTRUCTION



1 VERTICAL CROSS SECTION  
3 STUD CONSTRUCTION

Documents Prepared By:

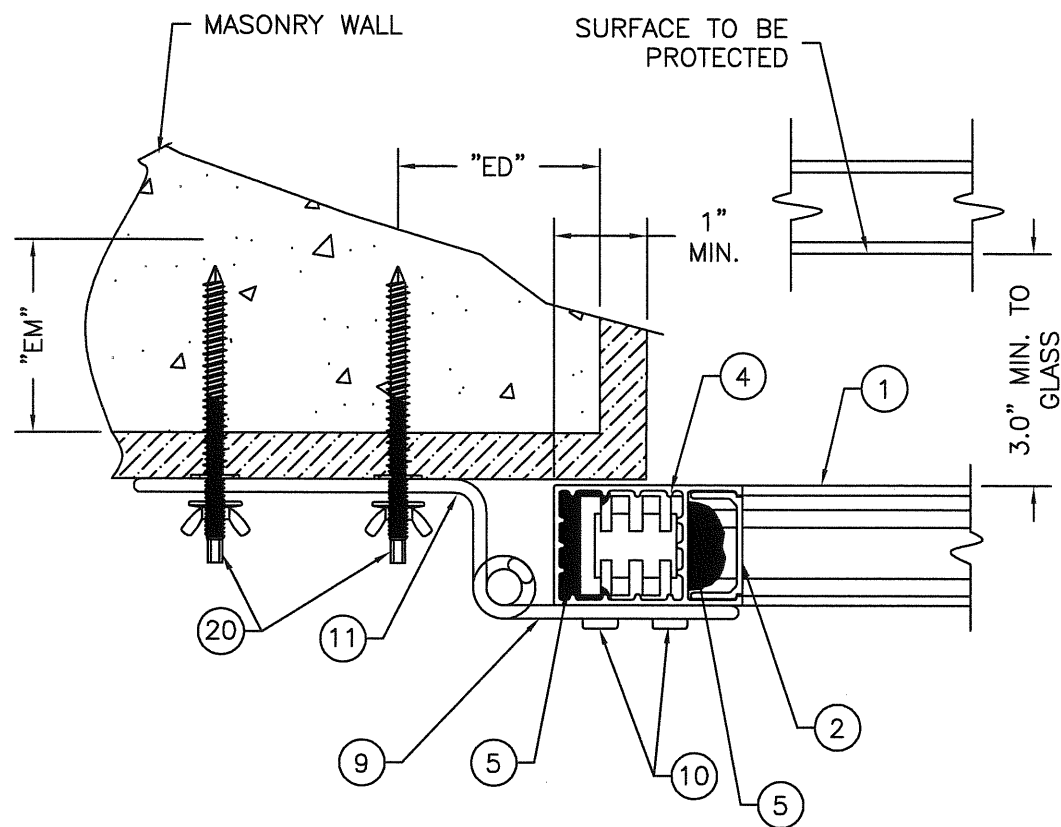
**RW** BUILDING CONSULTANTS, INC.  
P.O. Box 230 Vairico FL 33595  
Phone No.: 813.659.9197  
Florida Board of Professional Engineers  
Certificate Of Authorization No. 9813  
*Wendell W. Haney*  
Wendell W. Haney, P.E. No. 54158

PRODUCT:  
SOUTHERN EXTRUSIONS  
EXTRUDED ALUMINUM  
COLONIAL HURRICANE SHUTTER  
PART OR ASSEMBLY:  
VERTICAL CROSS SECTIONS  
MASONRY & STUD CONSTRUCTION

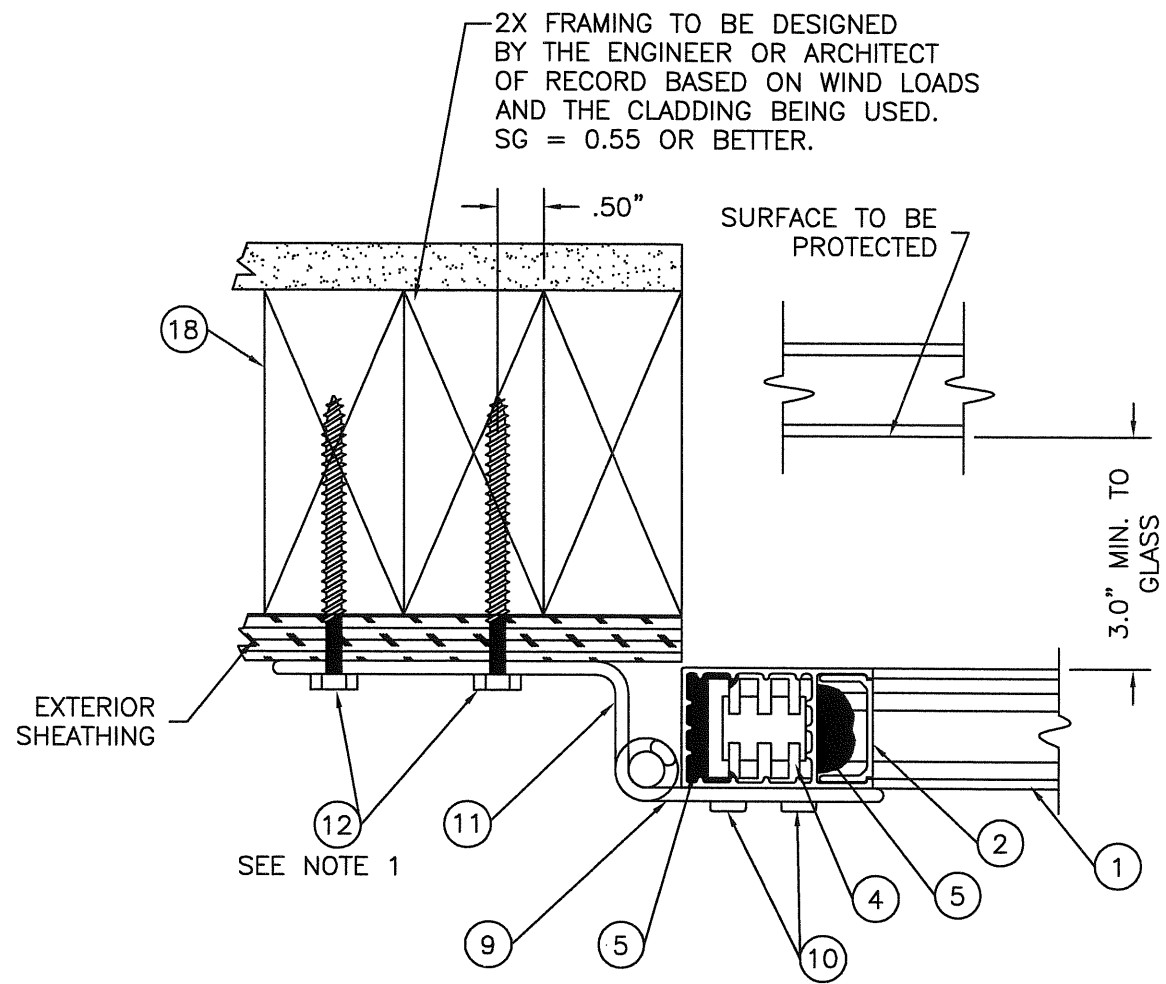
NO.	DATE	BY	REVISIONS

DATE: 4/22/08  
SCALE: N.T.S.  
DWG. BY: JK  
CHK. BY: WWH  
DRAWING NO.: FL-9102.1  
SHEET 3 OF 7

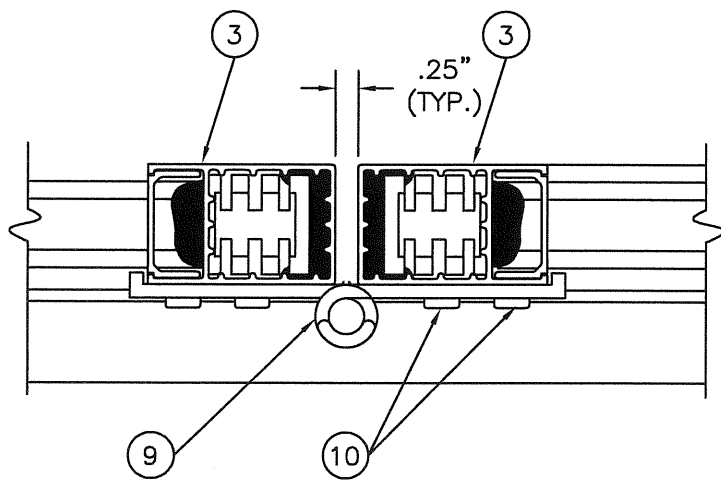
K:\VA - Project\Project folders\PROJ 1201-1300\PT 1240\U. RWBC Drawings\FL- 9102\FL-9102-4-1.dwg, Model



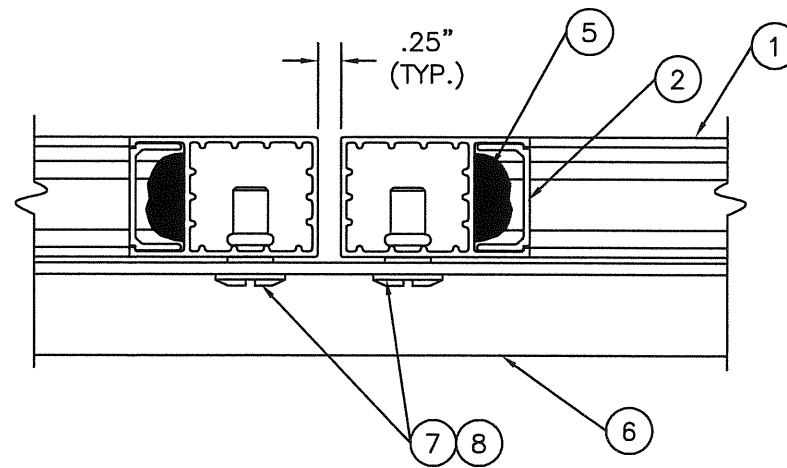
1 HORIZONTAL CROSS SECTION  
4 MASONRY CONSTRUCTION



3 HORIZONTAL CROSS SECTION  
4 STUD CONSTRUCTION



2 HORIZONTAL CROSS SECTION  
4



4 HORIZONTAL CROSS SECTION  
4

NOTE 1:  
INSTALLERS SHALL INSURE THE SCREWS INSTALLED  
INTO STUD WALL CONSTRUCTION DO NOT FALL ON STUD  
INTERFACE JOINTS

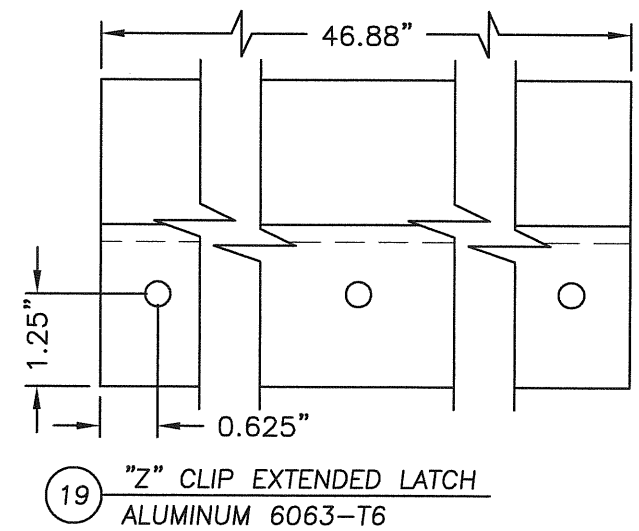
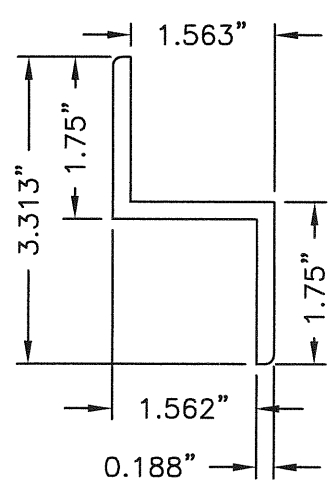
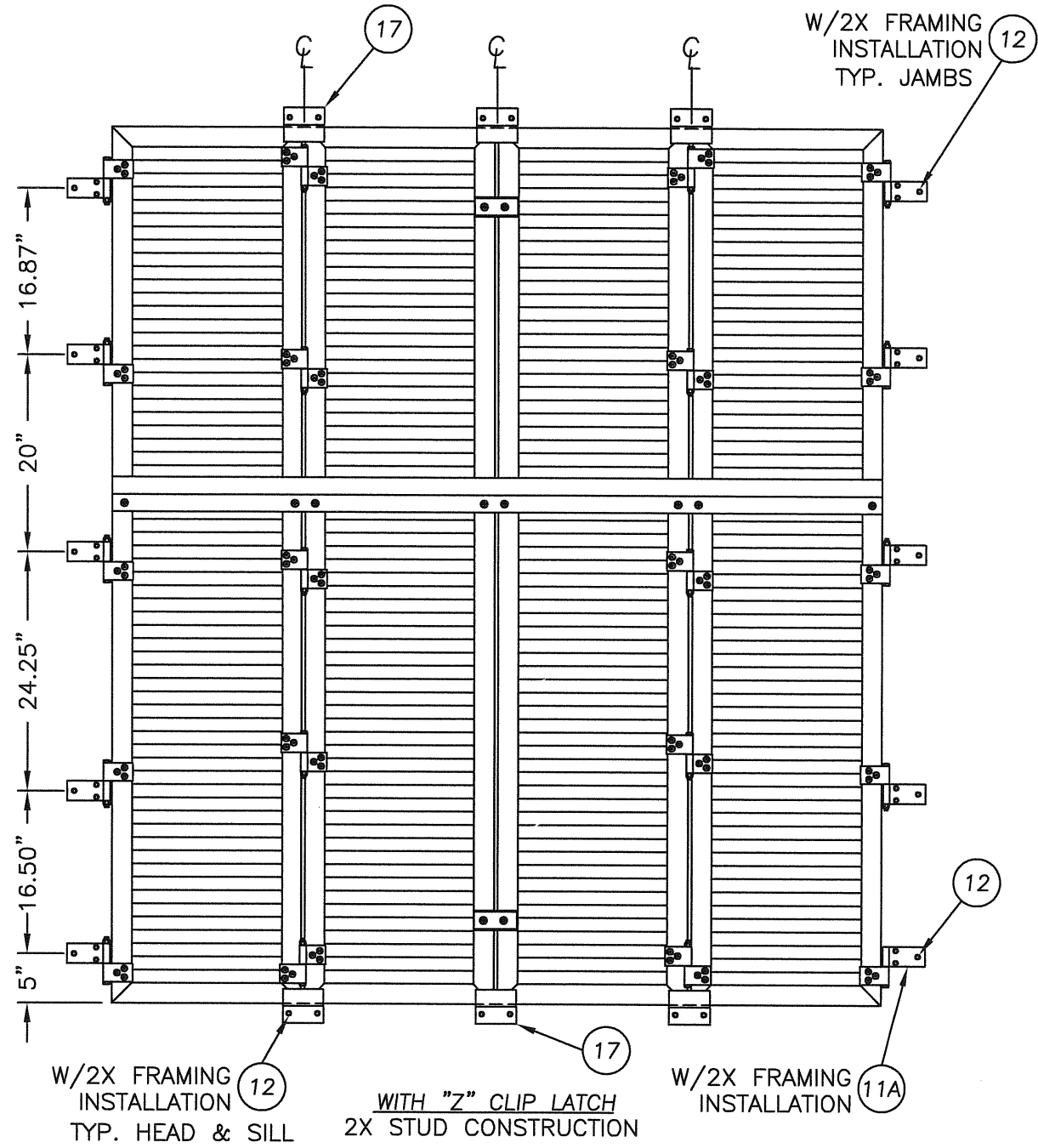
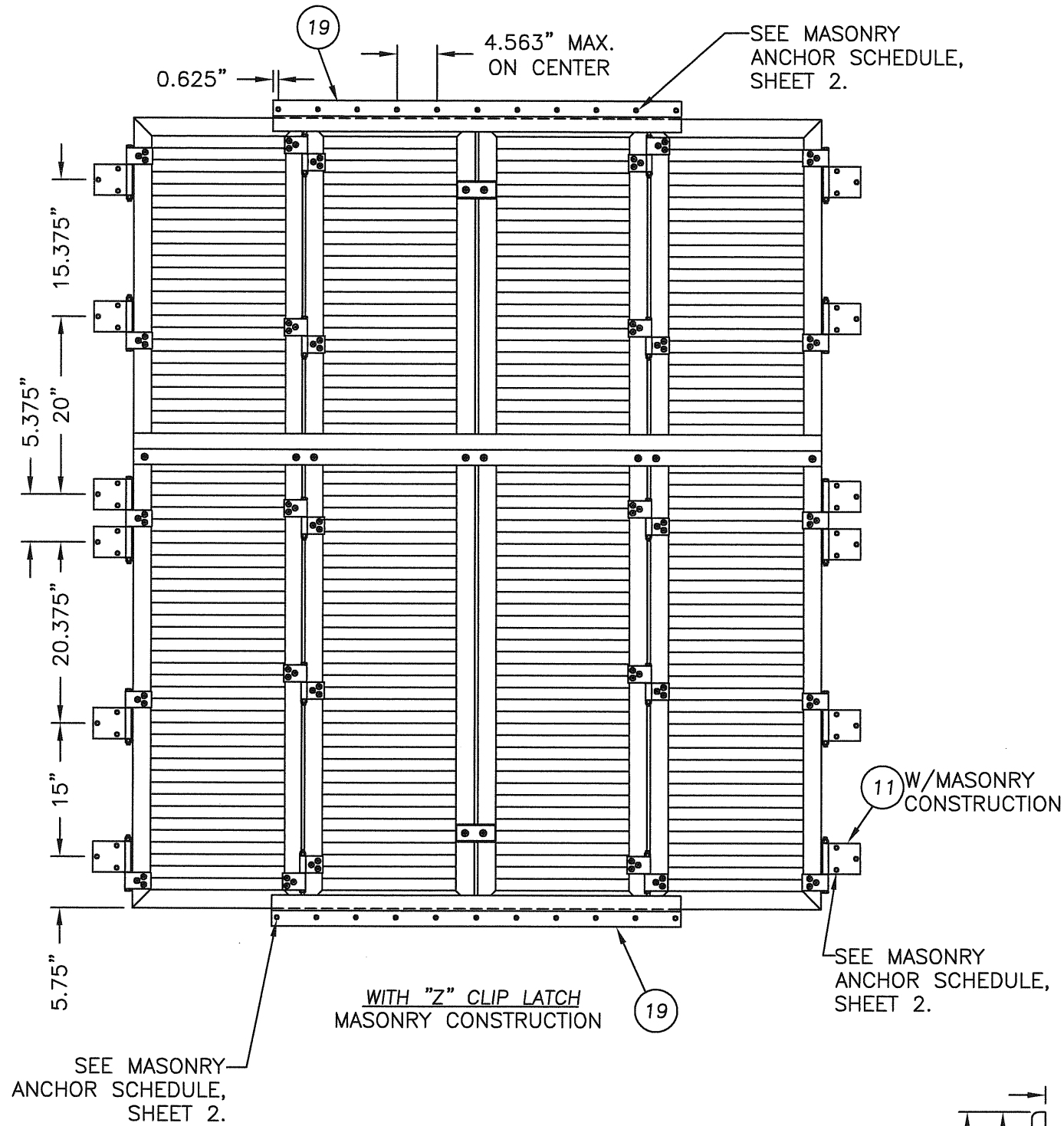
Documents Prepared By:  
**RW** BUILDING CONSULTANTS, INC.  
P.O. Box 230 Valrico FL, 33595  
Phone No.: 813.659.9197  
Florida Board of Professional Engineers  
Certificate Of Authorization No. 9813  
*Wendell W. Flangy* 42405  
Wendell W. Flangy, P.E. No. 54158

PRODUCT:  
SOUTHERN EXTRUSIONS  
EXTRUDED ALUMINUM  
COLONIAL HURRICANE SHUTTER  
PART OR ASSEMBLY:  
HORIZONTAL CROSS SECTIONS  
MASONRY & STUD CONSTRUCTION

NO.	DATE	BY	REVISIONS

DATE: 4/22/08  
SCALE: N.T.S.  
DWG. BY: JK  
CHK. BY: WWH  
DRAWING NO.: FL-9102.1  
SHEET 4 of 7





Documents Prepared By:  
**RW** BUILDING CONSULTANTS, INC.  
 P.O. Box 230 Valrico FL 33585  
 Phone No.: 813.659.9197  
 Florida Board of Professional Engineers  
 Certificate Of Authorization No. 9813  
*Wendell W. Hanes* 4.24.08  
 Wendell W. Hanes, P.E. No. 54158

PRODUCT:  
 SOUTHERN EXTRUSIONS  
 EXTRUDED ALUMINUM  
 COLONIAL HURRICANE SHUTTER  
 PART OR ASSEMBLY:  
 ANCHORING LOCATIONS  
 MASONRY & STUD INSTALLATION

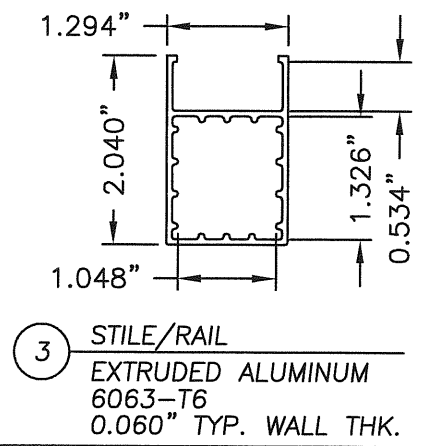
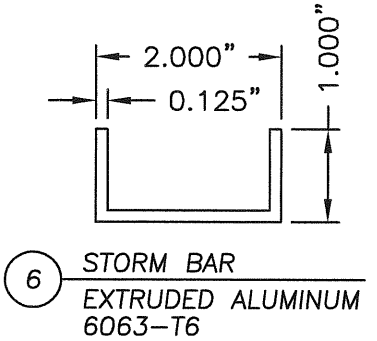
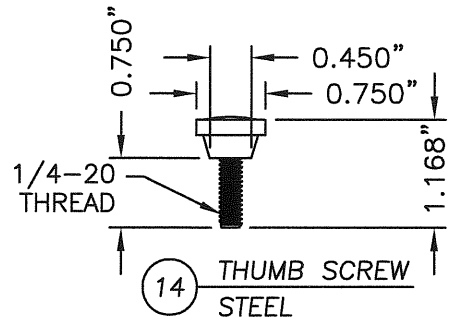
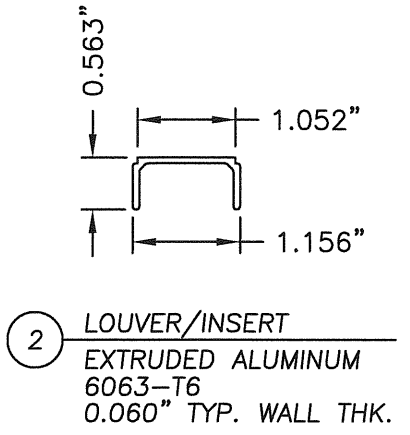
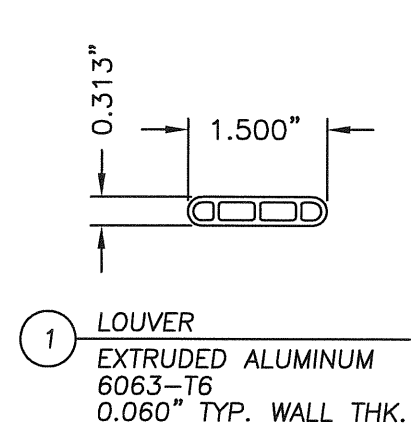
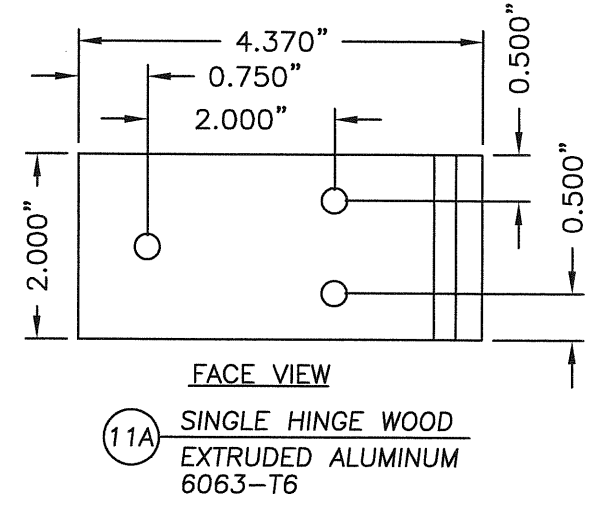
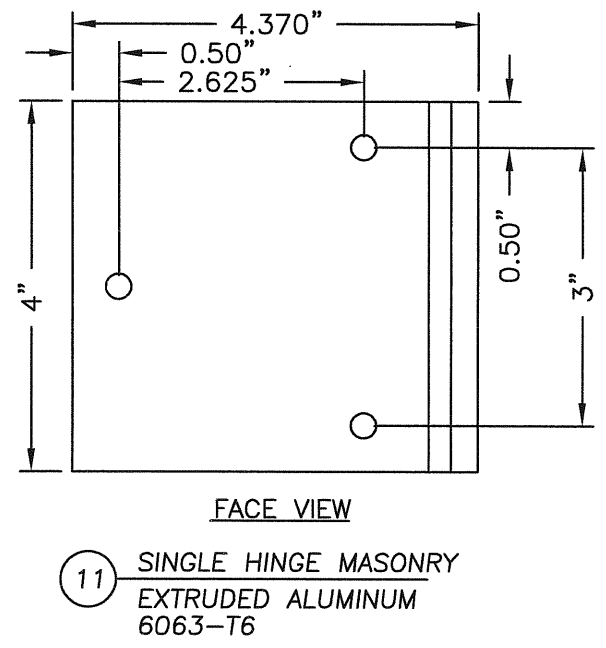
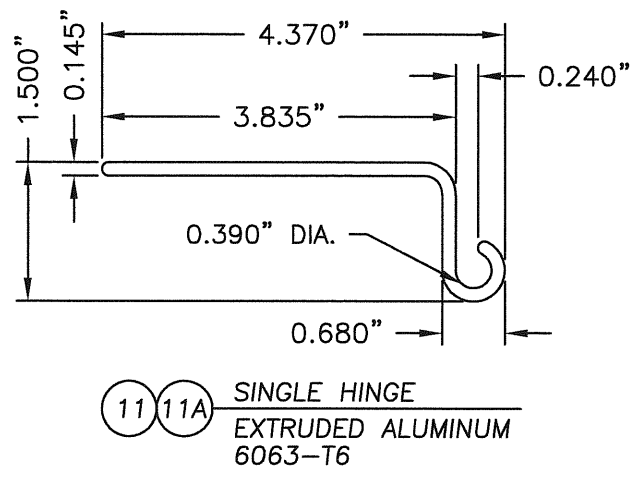
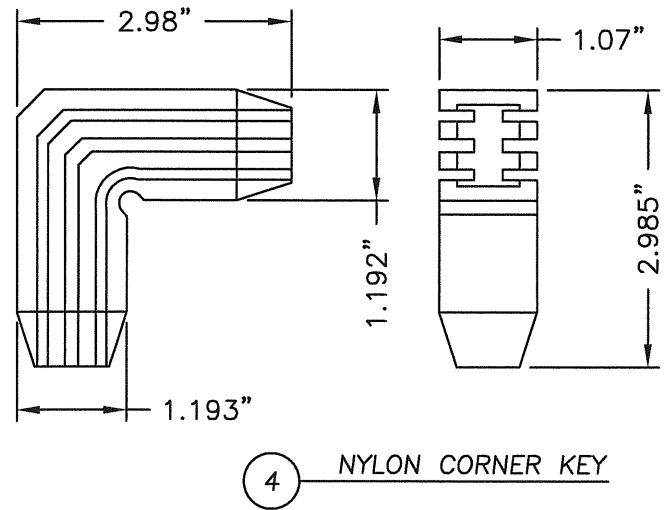
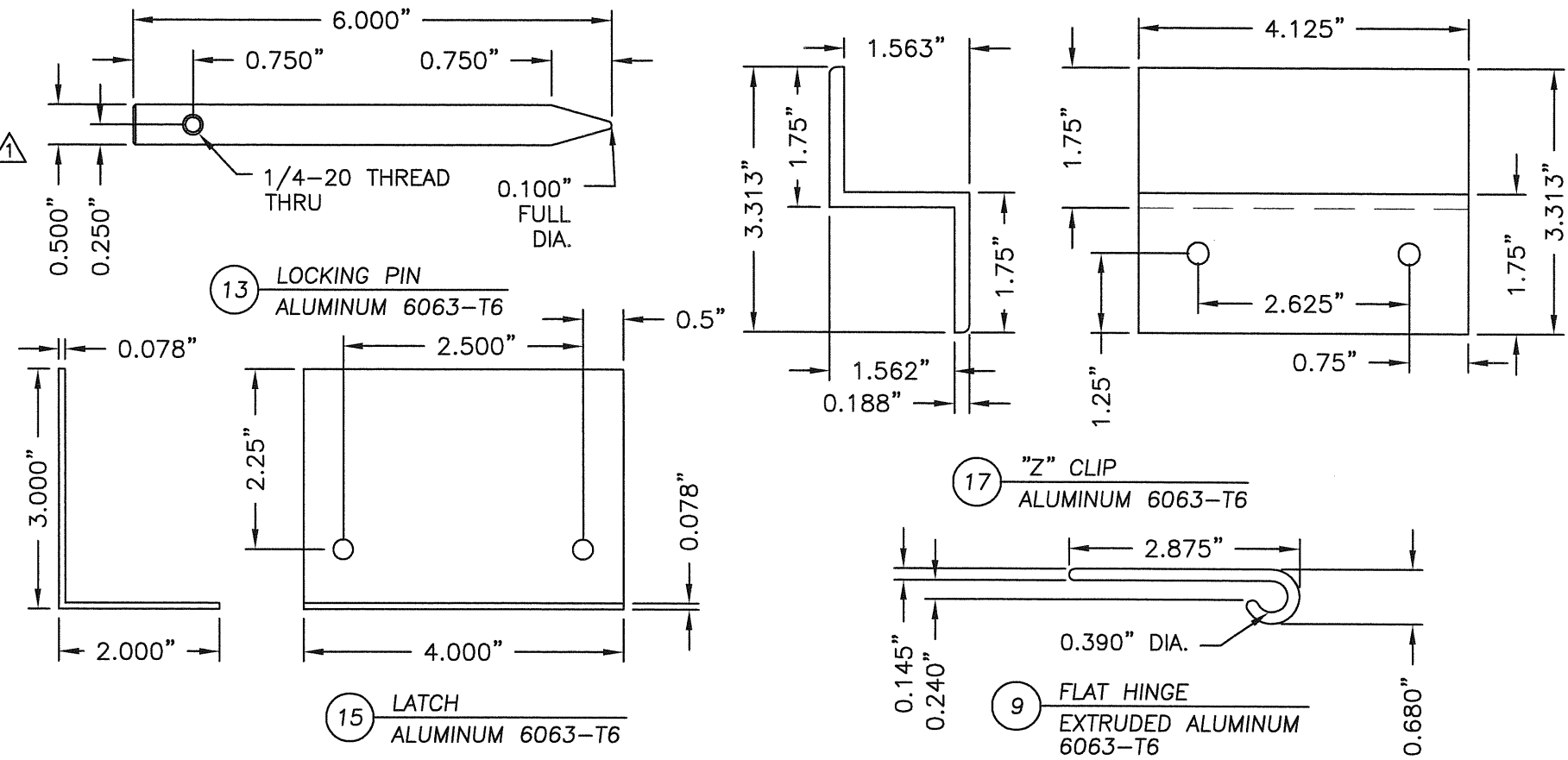
NO.	DATE	BY	REVISIONS

DATE: 4/22/08  
 SCALE: N.T.S.  
 DWG. BY: JK  
 CHK. BY: WWH  
 DRAWING NO.: FL-9102.1  
 SHEET 6 OF 7

© 2007 R.W. BUILDING CONSULTANTS INC.

K:\A - Projects\Project Holders\Proj 1201-1300\pr 1240\D. RWBC Drawings\FL-9102\FL-9102-7.1.dwg, Model

BILL OF MATERIALS		
1	LOUVER 6063-T6 0.060"	ALUM.
2	LOUVER/INSERT 6063-T6 0.060"	ALUM.
3	STILE/RAIL 6063-T6 0.060"	ALUM.
4	NYLON CORNER KEY	NYLON
5	STRUCTURAL ADHESIVE	-
6	STORM BAR 6063-T6	ALUM.
7	1/4-20 x 1" SIDEWALK BOLT	STEEL
8	1/4-20 RIV-NUT	ALUM.
9	FLAT HINGE	ALUM.
10	3/16" DIA. POP RIVET	ALUM.
11	SINGLE HINGE MASONRY	ALUM.
11A	SINGLE HINGE WOOD	ALUM.
12	1/4" x 3" H.H. LAG SCREW	STEEL
13	LOCKING PIN	ALUM.
14	THUMB SCREW	STEEL
15	LATCH	ALUM.
17	"Z" CLIP	ALUM.
18	2x FRAMING (SG = .55 OR BETTER)	WOOD
19	"Z" CLIP EXTENDED LATCH	ALUM.
20	MASONRY ANCHOR SEE MASONRY ANCHOR SCHEDULE	STEEL



Documents Prepared By: **RW** BUILDING CONSULTANTS, INC.  
P.O. Box 250 Valrico FL 33595  
Phone No.: 813.659.9197  
Florida Board of Professional Engineers  
Certificate of Authorization No. 9813  
Wendell W. Hand, P.E. No. 54158

PRODUCT: SOUTHERN EXTRUSIONS  
EXTRUDED ALUMINUM  
COLONIAL HURRICANE SHUTTER  
PART OR ASSEMBLY: BILL OF MATERIALS & COMPONENTS

NO.	DATE	BY	REVISIONS

DATE: 4/22/08  
SCALE: N.T.S.  
DWG. BY: JK  
CHK. BY: WWH  
DRAWING NO.: FL-9102.1  
SHEET 7 OF 7

© 2007 R.W. BUILDING CONSULTANTS INC.