

WALTER A. TILLIT, JR., P.E.

tilteco@aol.com  
FL P.E. License No. 44167  
FL E.B. License No. 0006719

## PRODUCT EVALUATION REPORT

**REPORT NO.:** 11-1208.13  
**DATE:** December 8, 2011  
**PRODUCT CATEGORY:** Hurricane Shutters  
**PRODUCT SUB-CATEGORY:** Storm Panels  
**PRODUCT NAME:** 20 Gage Galvanized Steel Storm Panel  
**MANUFACTURER:** Global Protection Products LLC.  
4800 S.W. 51 Street  
Davie, Florida 33314

### 1. PURPOSE OF EVALUATION:

This is a Product Evaluation Report issued by **Walter A. Tillit, Jr., P.E.** (System ID # 1906) to **Global Protection Products LLC.**, manufacturer, based on Rule Chapter No. 9B-72.070, Method 1d of the State of Florida Product Approval, Department of Community Affairs-Florida Building Commission.

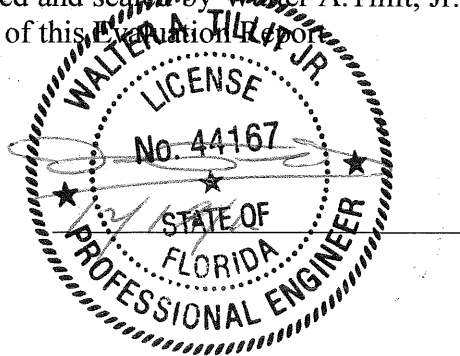
This product is being issued an Evaluation Report as described herein, and has been verified for compliance in accordance with the 2010 edition of the Florida Building Code, and to verify that the product is for the purpose intended at least equivalent to that required by the Code.

This Product Evaluation Report shall be subject to review and revision in case of a Building Code Change that may affect its limitations and conditions.

### 2. EVIDENCE SUBMITTED:

#### 2.1. PRODUCT EVALUATION DOCUMENT (P.E.D.):

Drawing No. 11-213, titled "20 GAGE GALVANIZED STEEL STORM PANEL", sheets 1 thru 26 of 26 prepared by Tilteco, Inc.; signed and sealed by **Walter A. Tillit, Jr., P.E.**; dated 12/08/11. This drawing is an integral part of this Evaluation Report.



**2.2. TEST REPORTS:**

Large missile impact and fatigue load tests were performed under Protocols TAS 201, 203 as per section 1626 of the Florida Building Code. Uniform static loads as per TAS 202 Protocol. Test reports prepared by Hurricane Engineering & Testing, Inc., Reports # 96-569 dated 08/09/1996, #96-570 dated 09/18/1996, #96-T30 dated 09/20/1996, all three signed and sealed by Hector M. Medina, P.E., Fenestration Testing Laboratory, Inc. reports # 2032 dated 04/16/1998 and # 2126 dated 10/05/1998 witnessed by Gilbert Diamond, P.E. and Report No. 0219.01-09, dated March 4, 2009, signed and sealed by Edmundo Largaespada, P.E. and Henry Hattem, P.E.

Tensile test report No. 9CM-197 by QC Metallurgical, Inc., dated March 13, 2009, signed and sealed by Frank Grate, P.E.

**2.3. STRUCTURAL ENGINEERING CALCULATIONS:**

On 20 Gage Galvanized Steel Storm Panel for maximum panel length vs. design wind load, as well as maximum anchor spacing vs. design wind load and panel length based on rational and comparative analysis, and in accordance with section 1612 of the Florida Building Code. Calculations prepared by Tilteco, Inc., dated 11/03/08, signed and sealed by Walter A. Tillit, Jr., P.E.

**3. MISSILE IMPACT RESISTANCE:**

Large missile impact under section 1626 of the Florida Building Code, as per TAS 201 Protocol.

**4. WIND LOADS RESISTANCE:**

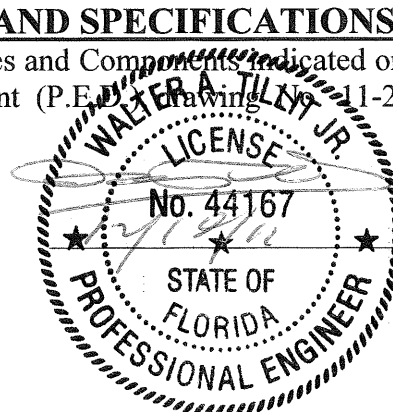
20 Gage Galvanized Steel Storm Panel has been verified to sustain wind pressures. Maximum panel length shall be as indicated on sheets 8, 10, 14, 15, 16, 19, 25 and 26 of 26 of Product Evaluation Document (P.E.D.), drawing No. 11-213. Maximum Anchor Spacing shall be as indicated on sheets 8, 9, 10, 11, 14, 15, 17, 18, 19, 20 25 and 26 of 26, of Product Evaluation Document (P.E.D.), drawing No. 11-213.

**5. INSTALLATION:**

Installation shall be performed strictly in accordance with details indicated on sheets 3 thru 7, 10 thru 20, 23, 24 and 26 of 26, of Product Evaluation Document (P.E.D.), drawing No. 11-213. Minimum separation to glass shall be as indicated on sheets 8, 14, 16, 25 and 26 of 26, of Product Evaluation Document (P.E.D.), drawing No. 11-213.

**6. MATERIAL CHARACTERISTICS AND SPECIFICATIONS:**

Shall be strictly in accordance with General Notes and Components indicated on sheet 1, 2 and 22 of 26, of Product Evaluation Document (P.E.D.), drawing No. 11-213.



Anchor specifications shall be as indicated on sheets 1, 7 and 21 of 26, of Product Evaluation Document (P.E.D.), drawing No. 11-213.

**7. LIMITATIONS AND CONDITIONS OF USE:**

7.1. Shall be strictly in compliance with General Notes No. 1, 8 thru 14, indicated on sheet 1 of 26, as well as General Notes # 1 thru 4 and 11 thru 16, indicated on sheet 21 of 26 of Product Evaluation Document (P.E.D.), drawing No. 11-213 prepared by Tilteco, Inc. and signed and sealed by Walter A. Tillit, Jr., P.E.

7.2. Product **may** be installed within HIGH VELOCITY HURRICANE ZONES as defined on section 1620.2 of the Florida Building Code.

7.3. Product shall only be installed into poured concrete, concrete block, and wood frame structures.

Product Evaluation Report prepared by Walter A. Tillit, Jr., P.E. (Florida License No. 44167), President of Tilteco, Inc. (Florida EB-0006719).

