



BUILDING CODE COMPLIANCE OFFICE (BCCO)
PRODUCT CONTROL DIVISION

MIAMI-DADE COUNTY, FLORIDA
METRO-DADE FLAGLER BUILDING
140 WEST FLAGLER STREET, SUITE 1603
MIAMI, FLORIDA 33130-1563
(305) 375-2901 FAX (305) 375-2908

NOTICE OF ACCEPTANCE (NOA)

Caradco Windows & Doors
201 Evans Road
Rantoul, IL 61866

SCOPE:

This NOA is being issued under the applicable rules and regulations governing the use of construction materials. The documentation submitted has been reviewed by Miami-Dade County Product Control Division and accepted by the Board of Rules and Appeals (BORA) to be used in Miami Dade County and other areas where allowed by the Authority Having Jurisdiction (AHJ).

This NOA shall not be valid after the expiration date stated below. The Miami-Dade County Product Control Division (In Miami Dade County) and/or the AHJ (in areas other than Miami Dade County) reserve the right to have this product or material tested for quality assurance purposes. If this product or material fails to perform in the accepted manner, the manufacturer will incur the expense of such testing and the AHJ may immediately revoke, modify, or suspend the use of such product or material within their jurisdiction. BORA reserves the right to revoke this acceptance, if it is determined by Miami-Dade County Product Control Division that this product or material fails to meet the requirements of the applicable building code.

This product is approved as described herein, and has been designed to comply with the High Velocity Hurricane Zone of the Florida Building Code.

DESCRIPTION: Series "French View" Aluminum Clad Wood Outswing Patio Door

APPROVAL DOCUMENT: Drawing No. **W01-41**, titled " 'French View' Outswing Patio Door", sheets 1 through 5 of 5, prepared by Al Farooq Corporation, dated 8/30/02, signed and sealed by Humayoun Farooq, P.E., bearing the Miami-Dade County Product Control Approval stamp with the Notice of Acceptance number and approval date by the Miami-Dade County Product Control Division.

MISSILE IMPACT RATING: Large and Small Missile Impact

LABELING: Each unit shall bear a permanent label with the manufacturer's name or logo, city, state and following statement: "Miami-Dade County Product Control Approved", unless otherwise noted herein.

RENEWAL of this NOA shall be considered after a renewal application has been filed and there has been no change in the applicable building code negatively affecting the performance of this product.

TERMINATION of this NOA will occur after the expiration date or if there has been a revision or change in the materials, use, and/or manufacture of the product or process. Misuse of this NOA as an endorsement of any product, for sales, advertising or any other purposes shall automatically terminate this NOA. Failure to comply with any section of this NOA shall be cause for termination and removal of NOA.

ADVERTISEMENT: The NOA number preceded by the words Miami-Dade County, Florida, and followed by the expiration date may be displayed in advertising literature. If any portion of the NOA is displayed, then it shall be done in its entirety.

INSPECTION: A copy of this entire NOA shall be provided to the user by the manufacturer or its distributors and shall be available for inspection at the job site at the request of the Building Official.

This NOA consists of this page 1 as well as approval document mentioned above.

The submitted documentation was reviewed by **Theodore Berman, P.E.**



NOA No 02-1003.05
Expiration Date: December 05, 2007
Approval Date: December 05, 2002
Page 1

Caradco Windows & Doors

NOTICE OF ACCEPTANCE: EVIDENCE SUBMITTED

(For File ONLY. Not part of NOA)

A. DRAWINGS

1. Manufacturer's die drawings and sections.
2. Drawing No. **W01-41**, titled " 'French View' Outswing Patio Door", sheets 1 through 5 of 5, prepared by Al Farooq Corporation, dated 8/30/02, signed and sealed by Humayoun Farooq, P.E.

B. TESTS

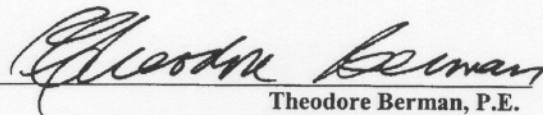
1. Test reports on 1) Large Missile Impact Test per FBC, TAS 201-94
2) Uniform Static Air Pressure Test, Loading per FBC, TAS 202-94
3) Cyclic Wind Pressure Loading per FBC, TAS 203-94
along with marked-up drawings and installation diagram of a French view outswing double door, prepared by Twin City Testing Corporation, Test Report No. **TCTCW102007**, dated 7/24/02, signed and sealed by Derrick Swanson, P.E.
2. Test reports on 1) Air Infiltration Test, per FBC, TAS 202-94
2) Uniform Static Air Pressure Test, Loading per FBC, TAS 202-94
3) Water Resistance Test, per FBC, TAS 202-94
4) Large Missile Impact Test per FBC, TAS 201-94
5) Cyclic Wind Pressure Loading per FBC, TAS 203-94
6) Forced Entry Test, per SFBC 3603.2 (b) and TAS 202-94
along with marked-up drawings and installation diagram of an aluminum single hung window, prepared by National Certified Testing Laboratories, Test Report No. **NCTL-210-2341-1,2,3**, dated 8/7/00, signed and sealed by Barry D. Portnoy, P.E.

C. CALCULATIONS

1. Anchor Calculations and structural analysis, prepared by Al Farooq Corporation, dated 8/22/02, signed and sealed by Humayoun Farooq, P.E.

D. MATERIAL CERTIFICATIONS

1. Notice of Acceptance No. **01-0206.22** issued to Cardinal LG for "Cradinal Sea Storm Type B" dated 4/5/01, expiring on 12/30/02.



Theodore Berman, P.E.

Deputy Director, Product Control Division

NOA No 02-1003.05

Expiration Date: December 05, 2007

Approval Date: December 05, 2002

Caradco Windows & Doors

NOTICE OF ACCEPTANCE: EVIDENCE SUBMITTED

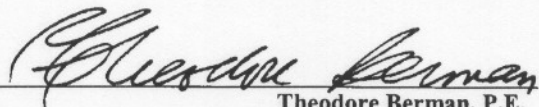
(For File ONLY. Not part of NOA)

E. STATEMENTS

1. Statement letter of conformance, dated 8/14/02, signed and sealed by Humayoun Farooq, P.E.
2. Statement letter of no financial interest, dated 8/30/02, signed and sealed by Humayoun Farooq, P.E.
3. Laboratory compliance letter for Test Report no. **NCTL-210-2341-1,2,3**, issued by National Certified Testing Laboratories, dated 8/8/00, signed and sealed by Barry D. Portnoy, P.E.

F. OTHER

1. Letter from Pistorino & Alam Consulting Engineers, Inc.



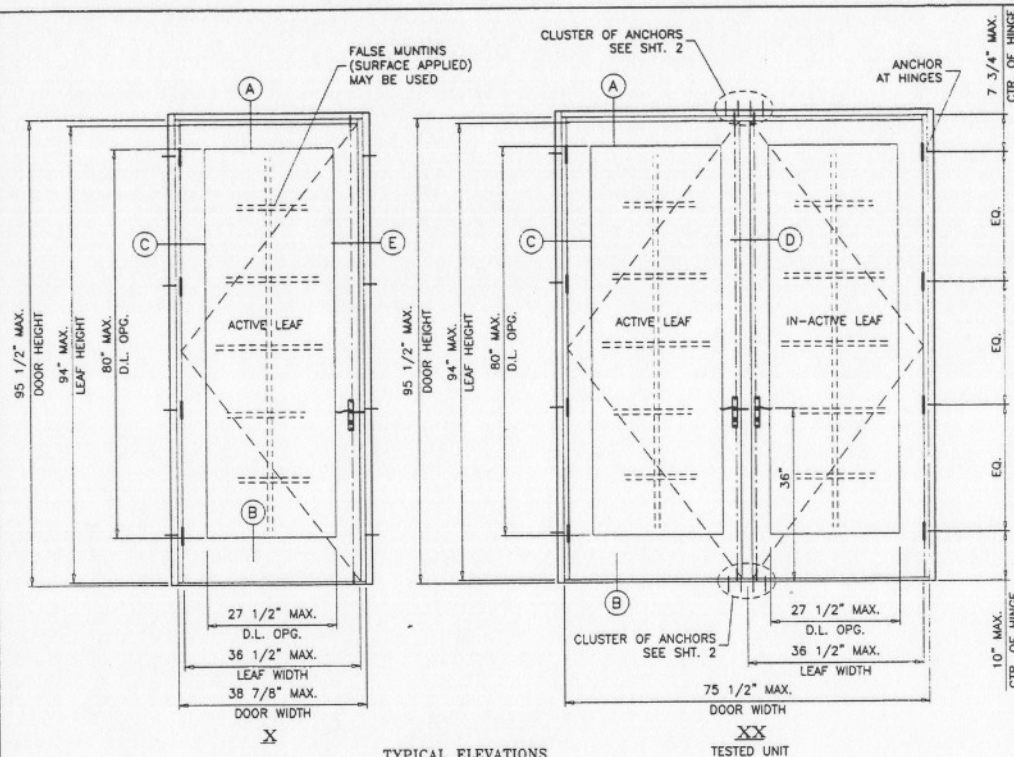
Theodore Berman, P.E.

Deputy Director, Product Control Division

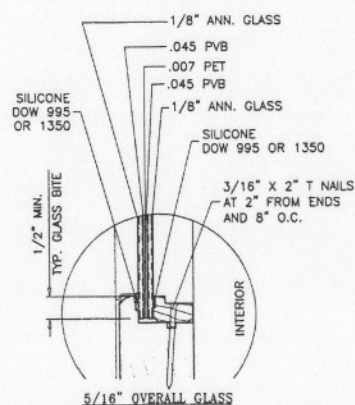
NOA No 02-1003.05

Expiration Date: December 05, 2007

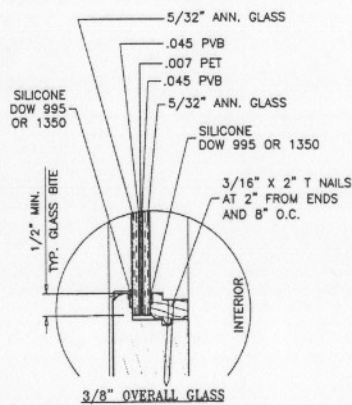
Approval Date: December 05, 2002



TYPICAL ELEVATIONS



'SEA-STORM IMPACT GLASS' BY 'CARDINAL LG'
LARGE MISSILE IMPACT RESISTANT



3/8\"/>

HEIGHTS:

NOMINAL HEIGHT	FRAME HEIGHT
6/8	79-1/2"
6/11	82-1/2"
8/0	95-1/2"

WIDTHS:

NOMINAL WIDTH	FRAME WIDTH
2/0 (X)	24-3/4"
2/6 (X)	30-3/4"
2/8 (X)	32-3/4"
3/0 (X)	36-3/4"
3/2 (X)	38-3/4"
4/0 (XX)	47-1/2"
5/0 (XX)	59-1/2"
5/6 (XX)	63-1/2"
6/0 (XX)	71-1/2"
6/4 (XX)	75-1/2"

DESIGN LOAD CAPACITY - PSF
SINGLE OR DUAL LEAF DOORS

DOOR HEIGHT FT./IN.	DOOR WIDTH FT./IN.		5/16" OVERALL GLASS		3/8" OVERALL GLASS	
	X (DOOR)	XX (DOOR)	EXT. (+)	INT. (-)	EXT. (+)	INT. (-)
6/8	2/0	4/0	65.0	65.0	65.0	65.0
	2/6	5/0	65.0	65.0	65.0	65.0
	2/8	5/4	64.1	64.1	65.0	65.0
	3/0	6/0	50.2	50.2	65.0	65.0
	3/2	6/4	43.7	43.7	65.0	65.0
6/11	2/0	4/0	65.0	65.0	65.0	65.0
	2/6	5/0	65.0	65.0	65.0	65.0
	2/8	5/4	65.0	65.0	65.0	65.0
	3/0	6/0	48.2	48.2	65.0	65.0
	3/2	6/4	42.0	42.0	65.0	65.0
8/0	2/0	4/0	65.0	65.0	65.0	65.0
	2/6	5/0	65.0	65.0	65.0	65.0
	2/8	5/4	60.8	60.8	65.0	65.0
	3/0	6/0	44.2	44.2	65.0	65.0
	3/2	6/4	37.2	37.2	61.9	61.9

'FRENCH VIEW' OUTSWING PATIO DOOR

APPROVAL APPLIES TO SINGLE (X) AND DOUBLE (XX) LEAF DOORS, SEE CHART ABOVE FOR CAPACITY.

DOORS GLAZED WITH LAMINATED GLASS RATED FOR LARGE MISSILE IMPACT AND REQUIRE NO SHUTTERS.

THIS PRODUCT IS DESIGNED TO COMPLY WITH THE HIGH VELOCITY HURRICANE ZONE OF THE 2001 FLORIDA BUILDING CODE. ALSO FOR WIND LOADS AS PER ASCE 7 USING CORRESPONDING LOADS.

WOOD BUCKS BY OTHERS, MUST BE ANCHORED PROPERLY TO TRANSFER LOADS TO THE STRUCTURE.

ANCHORS SHALL BE AS LISTED, SPACED AS SHOWN ON DETAILS. ANCHOR EMBEDMENT TO BASE MATERIAL SHALL BE BEYOND WALL DRESSING OR STUCCO.

ANCHORING OR LOADING CONDITIONS NOT SHOWN IN THESE DETAILS ARE NOT PART OF THIS APPROVAL.

Eng: DR. HUMAYOUN FAROOQ
STRUCTURES
FLA. PE # 16557

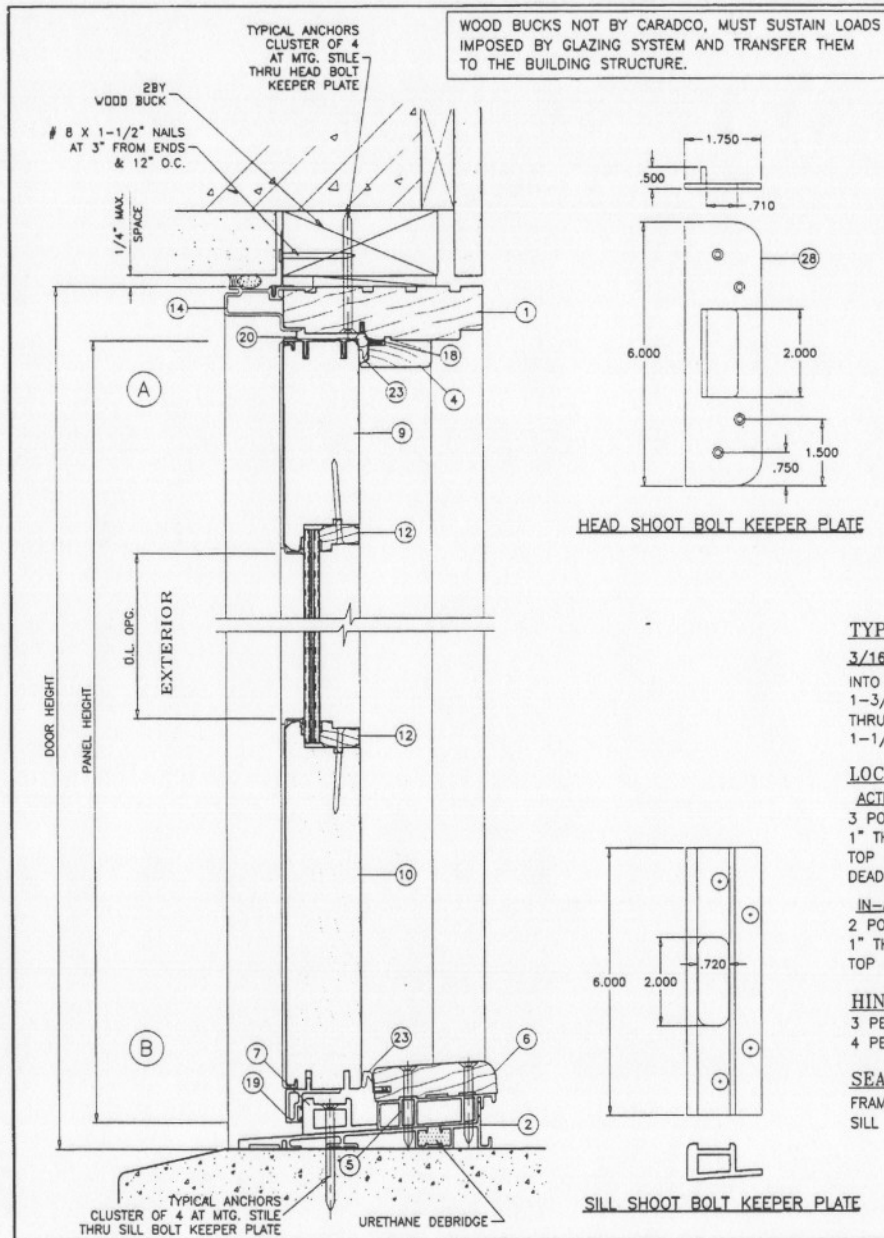
11 OCT 21 2002

Approved as complying with the
Florida Building Code
Date 12/05/02
NOA# 02-1003.05
Miami Dade Product Control
By *Charles Beaman*

AL-FAROOQ CORPORATION
ENGINEERS, PLANNERS & PRODUCT DESIGN
12355 SW 87 AVE
MIAMI, FLORIDA 33174
TEL. (305) 264-8100 FAX. (305) 262-6678
COMP-ANL W01-11CAR

'FRENCH VIEW' OUTSWING PATIO DOOR
CARADCO WOOD WINDOWS & PATIO DOORS
201 EVANS ROAD
RANTOUL, ILLINOIS 61866
TEL. (217) 893-4444 FAX (217) 893-0921

date: 08-30-02	revisions: no date by description
scale: 1/2"=1'-0"	
dr. by: HAMO	
chk. by:	
drawing no. W01-41	
sheet 1 of 5	



ITEM NO.	NUMBER	QTY.	DESCRIPTION	MATERIAL	MANF./SUPPLIER/REMARKS
1	MD-11	1	FRAME HEAD	WOOD	CARADCO
2	MFD004	1	FRAME SILL	6063-T5	-
3	MD-07	2	FRAME JAMB	WOOD	CARADCO
4	MD-05/08	AS REQD.	INTERIOR STOP	WOOD	CARADCO
5	MFD044	1	SILL THRESHOLD	RIGID PVC	-
6	MFD014	1	OAK THRESHOLD	WOOD	CARADCO
7	MFD094	1	SILL KEEPER	6063-T6	-
8	MD-03	1/ LEAF	HINGE STILE	WOOD	CARADCO
9	-	1/ LEAF	TOP RAIL	WOOD	CARADCO
10	MD-02	1/ LEAF	BOTTOM RAIL	WOOD	CARADCO
11	MD-03	1/ LEAF	LOCK STILE	WOOD	CARADCO
12	CA-17	AS REQD.	GLASS STOP (IMPACT)	WOOD	CARADCO
13	-	-	-	-	-
14	MFD017	1	HEAD EXTRUSION	6063-T5	-
15	MFD015A	2	JAMB EXTRUSION	6063-T5	-
16	MFD003	1	ALUMINUM ASTRAGAL	6063-T5	-
17	MFD009	1	ASTRAGAL KEEPER	STEEL	-
18	QEZD320	AS REQD.	FOAM FILLED COMPRESSION W'STRIPPING	VINYL	Q-LON
19	MFD030	1/ LEAF	BOTTOM RAIL WEATHERSTRIP CARRIER	PVC	-
20	Q3599	1/ LEAF	PANEL CAP WITH SEAL	PVC	-
21	PP1144	AS REQD.	DOOR W'STRIPPING, FLEXIBLE LEAF	PVC	AMESBURY
22	Q3596	AS REQD.	ASTRAGAL W'STRIPPING	PVC	FLEXIBLE LEAF
23	12103	AS REQD.	FRAME W'STRIPPING, FOAM TIP	PVC	AMESBURY
24	-	-	-	-	-
25	-	AS REQD.	4" HINGES	BRASS	LAWRENCE BROTHERS
28	-	*	SHOOT BOLT KEEPER	NYLON	AT SILL
29	MFD005	*	SHOOT BOLT STRIKE	BRASS	AT HEAD

TYPICAL ANCHORS: SEE ELEV. FOR SPACING

3/16" TAPCONS

INTO 2BY WOOD BUCKS OR WOOD STRUCTURE
1-3/8" MIN. PENETRATION INTO WOOD
THRU 1BY WOOD BUCKS INTO MASONRY OR DIRECTLY INTO MASONRY
1-1/4" MIN. EMBED INTO MASONRY

LOCKS:

ACTIVE LEAF

3 POINT LOCKING MECHANISM BY 'ASHLAND' WITH
1" THROW HARDENED STEEL SHOOT BOLTS AT
TOP & BOTTOM OF LEAF AND 1" THROW HARDENED
DEAD BOLT AT 36" FROM BOTTOM

ONE LEVER HANDLE AT ACTIVE LOCK STILE
36" FROM BOTTOM.

IN-ACTIVE LEAF

2 POINT LOCKING MECHANISM BY 'ASHLAND' WITH
1" THROW HARDENED STEEL SHOOT BOLTS AT
TOP & BOTTOM OF LEAF.

ONE LEVER HANDLE AT INACTIVE LOCK STILE
36" FROM BOTTOM.

HINGES: 4" X 4" HINGE

3 PER LEAF UPTO 6/11 HIGH DOORS, EQUALLY SPACED
4 PER LEAF OVER 6/11 HIGH DOORS, EQUALLY SPACED

SEALANT:

FRAME AND LEAF CORNERS INSTALLATION SCREWS AT
SILL SEALED WITH SCHNEE-MOREHEAD SMB400 SEALANT.

Engr: DR. HUMAYOUN FAROOQ
STRUCTURES
FLA. PE # 16557

DT 21 2002

Approved as complying with the
Florida Building Code
Date: 12/05/02
NOA# 02-1003.05
Miami Dade Product Control
Div:
By: *[Signature]*

AL-FAROOQ CORPORATION
ENGINEERS, PLANNERS & PRODUCT DESIGN
1235 SW 87 AVE
MIAMI, FLORIDA 33174
TEL (305) 264-8100 FAX (305) 262-6978
COMP-ANL W01-41CAR

'FRENCH VIEW' OUTSWING PATIO DOOR
CARADCO WOOD WINDOWS & PATIO DOORS
201 EVANS ROAD
RANTOUL, ILLINOIS 61866
TEL (217) 893-4444 FAX (217) 893-0921

Revisions:
no. date by description

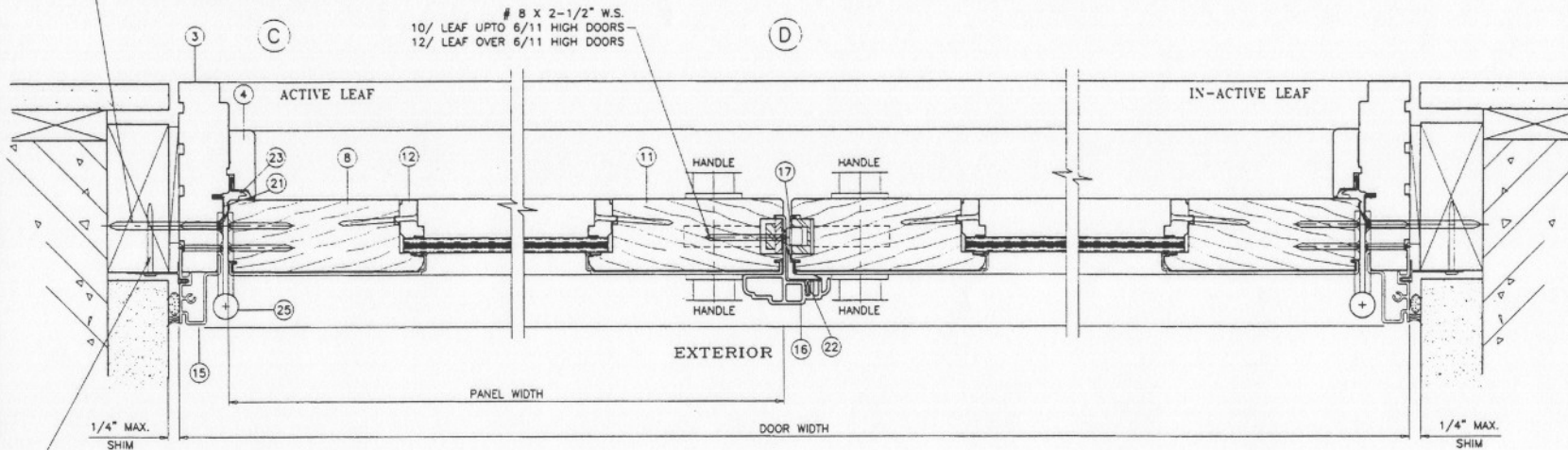
date: 08-30-02
scale: 3/8" = 1"
dr. by: HAMID
chk. by:

drawing no.
W01-41

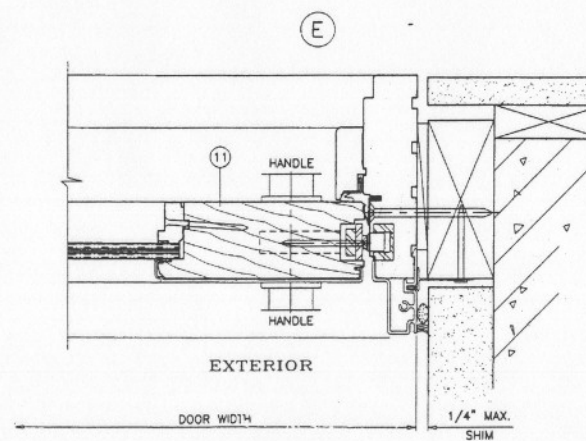
sheet 2 of 5

- (1) TAPCON PER HINGE ENGAGING BLDG. STRUCTURE
SEE NOTE B HINGE DETAIL, SHEET 4
(3) HINGES UP TO 6/11 HIGH DOORS
(4) HINGES OVER 6/11 HIGH DOORS
(USE EQUAL NO. OF ANCHORS ON LOCK SIDE JAMB)

8 X 2-1/2" W.S.
10/ LEAF UP TO 6/11 HIGH DOORS
12/ LEAF OVER 6/11 HIGH DOORS



8 X 1-1/2" NAILS
AT 3" FROM ENDS
& 12" O.C.



Engr. DR. HUMAYOUN FAROOQ
STRUCTURES
FLA. PE # 16557

DATE 12/03/02

Approved as complying with the
Florida Building Code
Date 12/03/02
NOAR 02-1003.05
Miami Dade Product Control
Div. By *Blanca Remy*

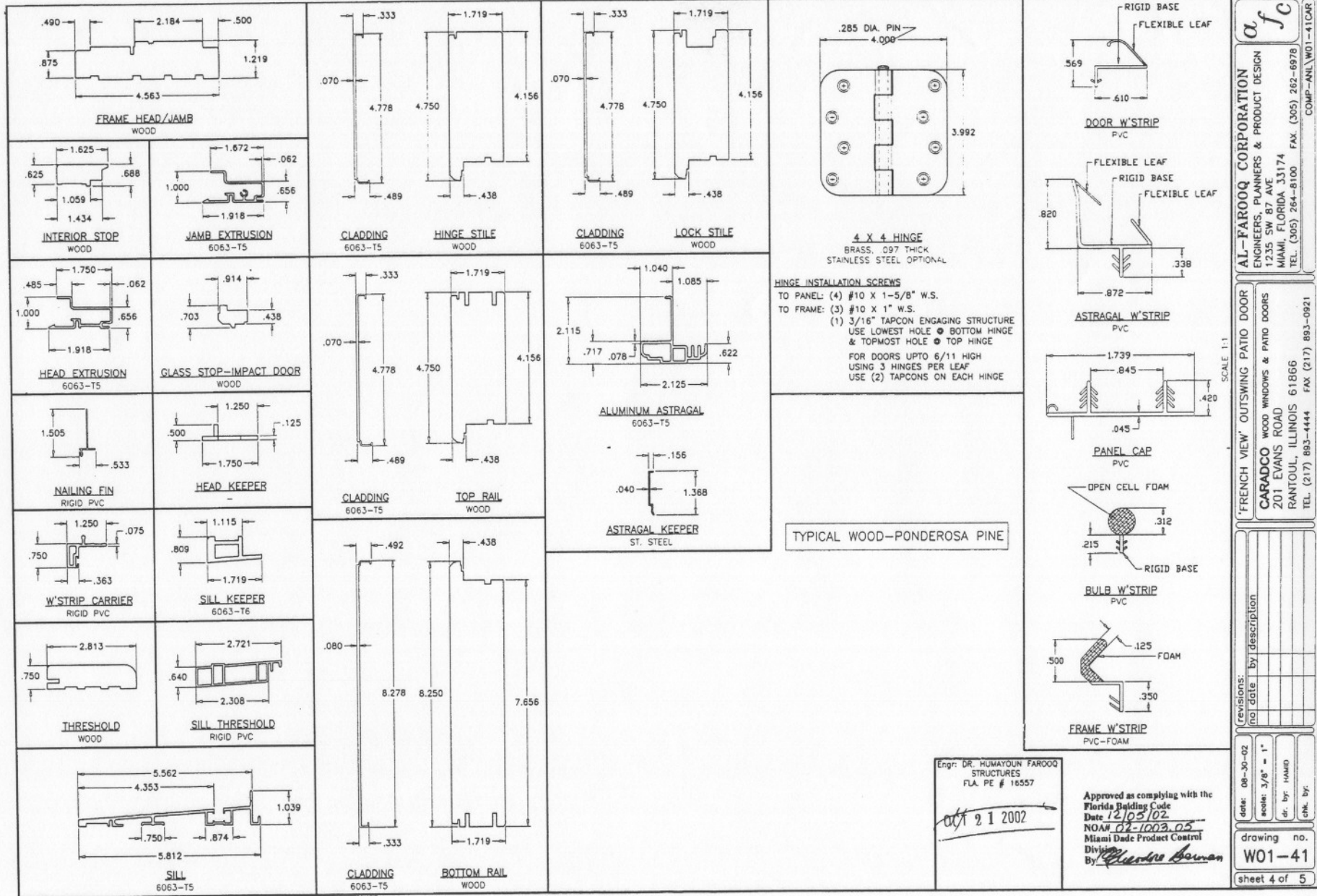
afc
AL-FAROOQ CORPORATION
ENGINEERS, PLANNERS & PRODUCT DESIGN
1235 SW 87 AVE
MIAMI, FLORIDA 33174
TEL. (305) 264-8100 FAX. (305) 262-6978
COMP-AN\W01-41CAR

'FRENCH VIEW' OUTSWING PATIO DOOR
CARADCO WOOD WINDOWS & PATIO DOORS
201 EVANS ROAD
RANTOUL, ILLINOIS 61866
TEL. (217) 893-4444 FAX (217) 893-0921

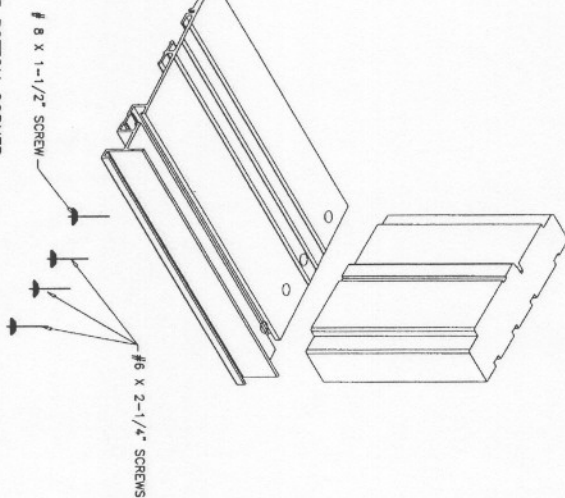
revisions:	no.	date	by	description

date: 08-30-02
scale: 3/8" = 1"
dr. by: HAMD
chk. by:

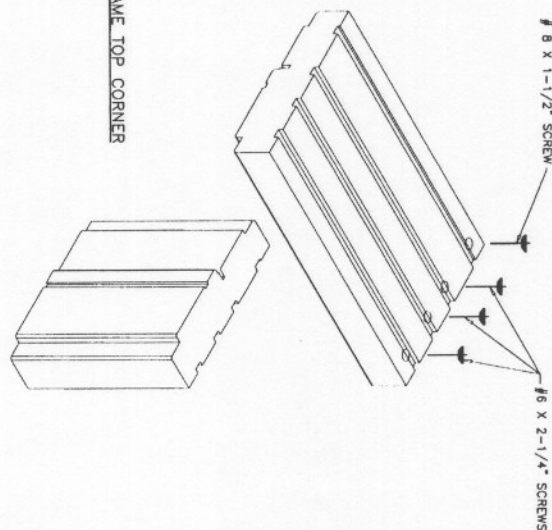
drawing no.
W01-41
sheet 3 of 5



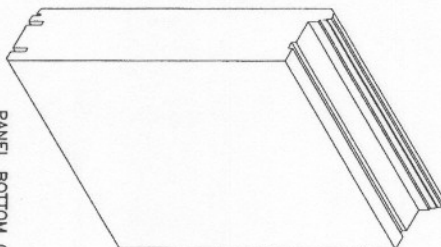
FRAME, BOTTOM CORNER



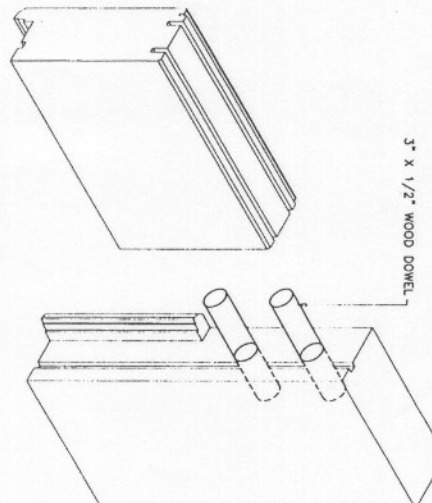
FRAME, TOP CORNER



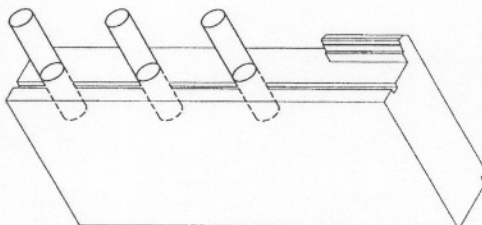
PANEL, BOTTOM CORNER



PANEL, TOP CORNER



USE JET WELD 200 HOT MELT POUR
BY 3M WITH DOWELS



Engr. DR. THAMMONGKOL FAROOQ
STRUCTURALS
P.L.C. # 16557
per J.T. 2002

Approved as complying with the
Florida Building Code
Date 12/05/02
NOAA 02-1003.05
Miami Date Product Control
By *Glenn R. Harrison*

drawing no. W01-41 sheet 5 of 5	date: 06-30-02	revisions:	'FRENCH VIEW' OUTSWING PATIO DOOR CARADCO WOOD WINDOWS & PATIO DOORS 201 EVANS ROAD RANTOUL, ILLINOIS 61866 TEL (217) 893-4444 FAX (217) 893-0921	AL-FAROOQ CORPORATION ENGINEERS, PLANNERS & PRODUCT DESIGN 1235 SW 87 AVE MIAMI, FLORIDA 33174 TEL (305) 264-8100 FAX (305) 262-6978 COMP-ANL\W01-41CAR	
	scale: 3/8" = 1"	no. date by description			
	dr. by: HAMID				
	chk. by:				