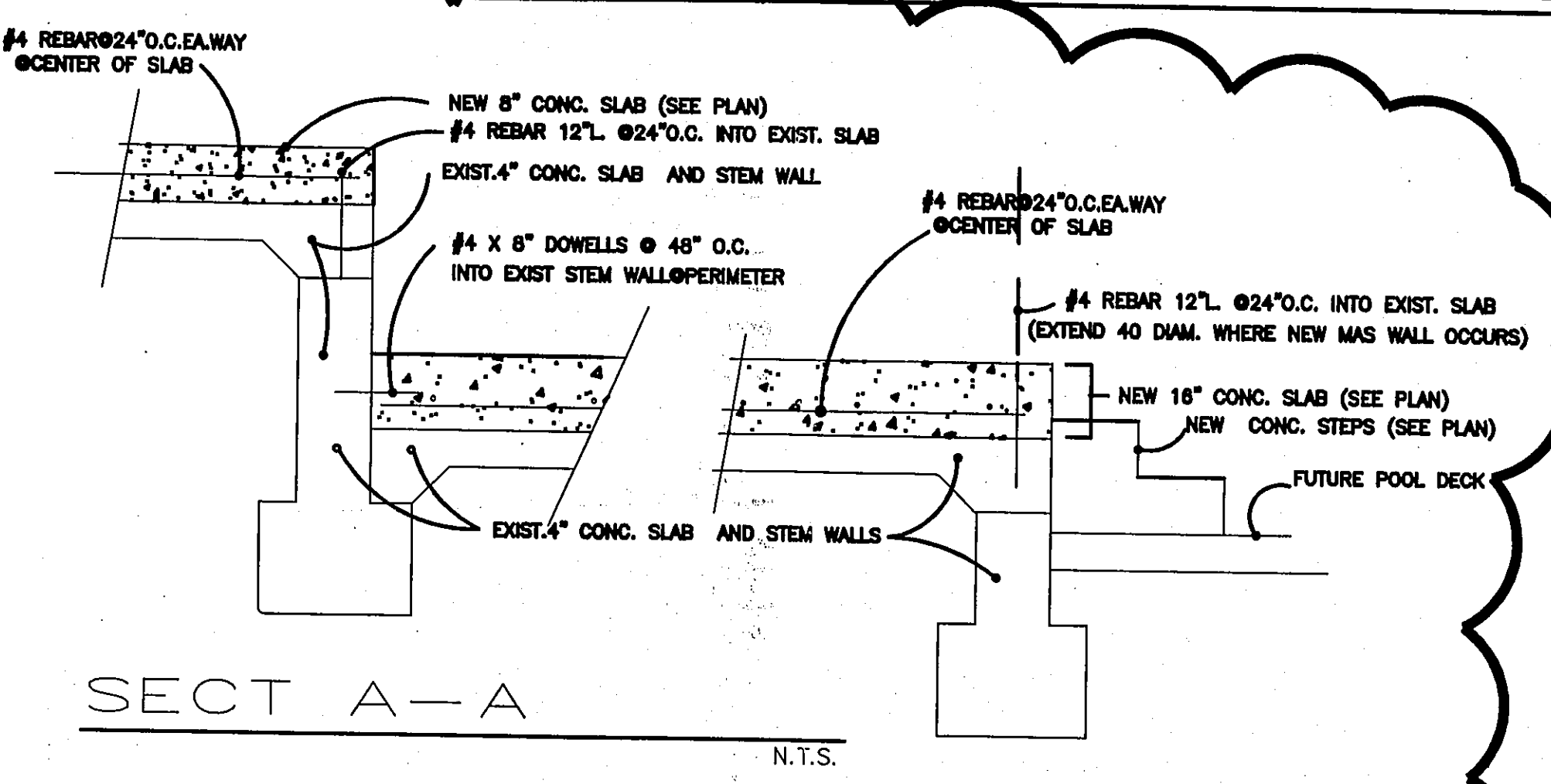


EXISTING FOUNDATION PLAN

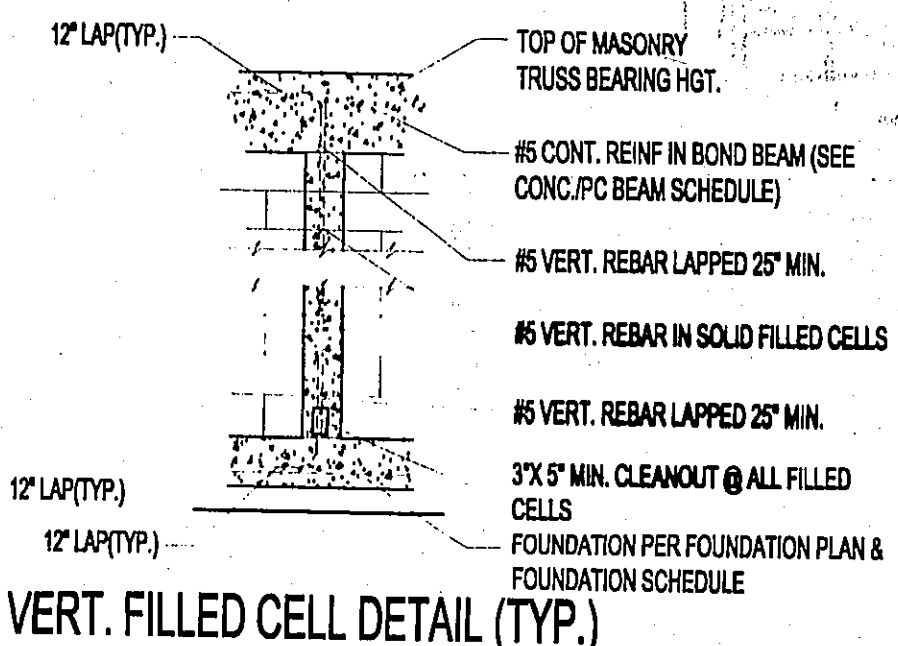
SCALE: 1/4" = 1'-0"

NOTE: ALL WORK IS WITHIN LIMITS OF EXISTING FOUNDATION AREA



SECTION A-A

N.T.S.



VERT. FILLED CELL DETAIL (TYP.)

Design Criteria

FBC 1606 2001
 Occupancy Type R3
 Construction Type UNPROT. VI
 Design Wind Speed 130MPH
 Wind Exposure Category C
 Wind Importance Factor 1.0
 Max. Design Pressure Components - 56.7 (2)
 Cladding - 59.3 (3)
 Internal Press. Coef. +/- .55
 Fire Sprinklered No
 1 Hour Fire Protected No
 Req. Soil Bearing 2000psf

Design Criteria

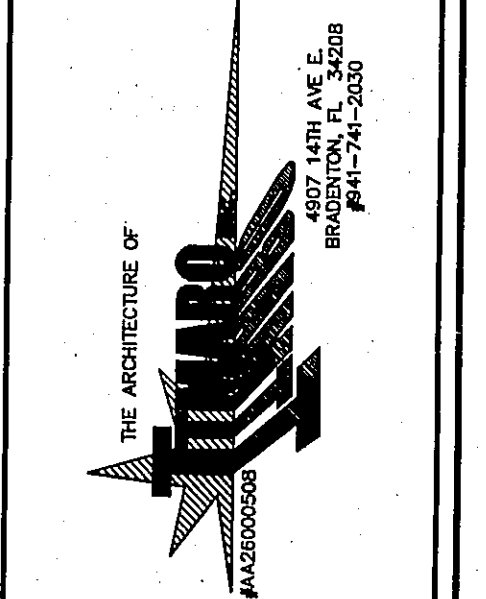
Hinge Ext. Doors-NOA 01-1219.01_Therma-Tru Corporation
 Casement Windows-NOA 03-1110.01_Andersen Corp.
 Awning Windows-NOA 00-0801.01_Andersen Corp.
 Fixed Windows-NOA 01-0709.01_Andersen Corp.
 SGDoors-NOA 01-0803.10_Andersen Corp.
 Roof Felt-ASTM 4869_Type II_Atlas Roofing Company
 Valley metal/drip-FRSA&NTRMA System II
 Mod Bitumen Underlayment-ASTM-3462,SBS Asphalt
 Atlas Roofing Corp.
 "S" Roof Tile-NOA 02-1115.03_Almar(USA)/aka Altusa
 Entry Door_Per Chapter9B-72.040(3)(b)of the DCA,
 data provided(written documentation) on-site that
 the evaluated product is compliant with the Code
 by a Florida RA or PE.

FOUNDATION

Revisions:

Rev. 7-7-2002
Rev. 12-7-2003
Rev. JAN 19 2004
Rev. MAR 13 2004
Rev. JUNE 24 2004
BLDG DEPT. REV.
Rev. JULY 21 2004
BLDG DEPT. REV.
Rev. 10/14/04/STATE

Design By: Gammerler / MCB
 Drawn By: MCB
 Checked By: JW
 Date: JULY 24 2004
 File Name: 06-FND-1.DWG
 Proj. No.: 1087



4807 LATA AVE. E.
 BOYDTON, FL 32009
 (941) 484-7791
 Fax: 484-7792
 DISTINCTION
 BUILDERS OF DISTINCTION 2001
 325 LAUREL ROAD
 NOKONING, IL 60057
 Builder's Of Distinction 2001

Proposed Project For:
Gunter Gammerler
 206 North Casey Key Road
 Casey Key, FL 34229

Print Date:
 JULY 24 2004

Sheet:

2

OF TWELVE

ALL DIMENSIONS ARE SUBJECT TO FIELD CONDITIONS AND SHOULD BE VERIFIED.

Jeta S. Wright #AB 017650
 ARCHITECTURE OF THRU INC
 OCT 15 2004
 BRADENTON, FL 34207
 941-484-7791
FND. PLAN

ST-1599