

LOCATION MAP



**MARRIOTT
RESORT
SAWGRASS**

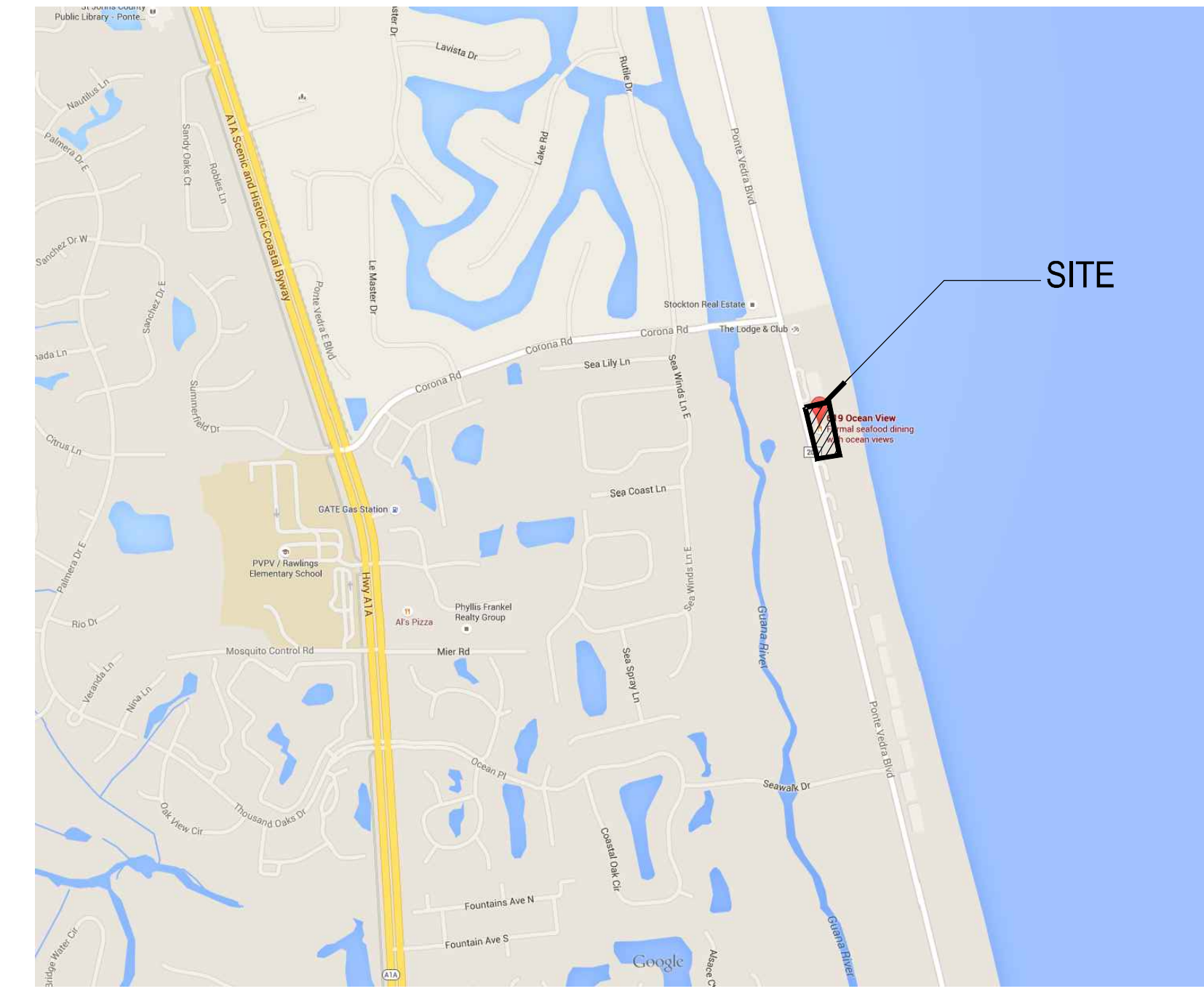
CABANA CLUB

100% CONSTRUCTION DOCUMENTS
2015.11.23

PREPARED FOR:



Watermark Capital Partners, LLC



SITE MAP

Sawgrass Marriott Cabana Club
619 Ponte Vedra Blvd
Ponte Vedra Beach, FL 32082
United States



SHEET INDEX

- L1.01 SITE SURVEY
- L2.01 SITE PREPARATION PLAN
- L3.01 HARDSCAPE PLAN
- L3.11 HARDSCAPE DETAILS
- L4.01 GRADING PLAN

- L5.00 LANDSCAPE NOTES & SCHEDULE
- L5.01 LANDSCAPE PLAN
- L5.11 LANDSCAPE DETAILS
- L6.01 LANDSCAPE LIGHTING PLAN
- L6.11 - L6.12 LIGHTING DETAILS

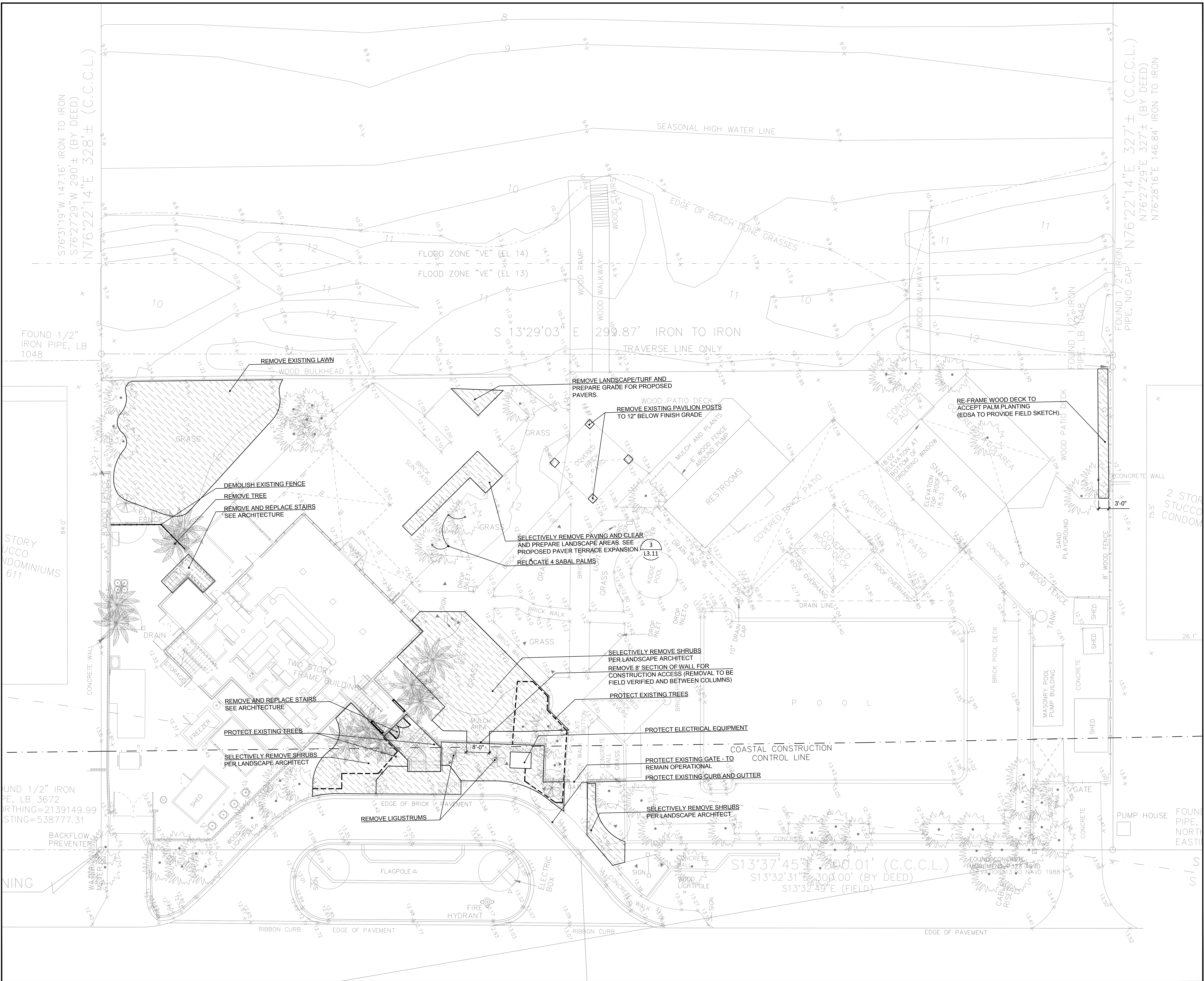
CONSULTANTS



1512 E. BROWARD BOULEVARD, SUITE 110
FORT LAUDERDALE, FLORIDA 33301 USA
TEL: 954.524.3330
www.edsaplan.com
LCC000001

PLANNING • LANDSCAPE ARCHITECTURE • URBAN DESIGN • GRAPHIC DESIGN

Drawing name: G:\Projects\BD114216 Sawgrass Marriott 20182_EDSA\ac02_CONSTRUCTION_DOCUMENTS\CABANA CLUB\114216L2.10-CD-CABANA-SITE PREPARATION PLAN.dwg L2.01 Jan 07, 2018 7:21pm by: afelech



Client:
Watermark Capital Partners, LLC
WATERMARK CAPITAL PARTNERS
272 EAST DEERPATH ROAD, SUITE 230
LAKE FOREST, IL 60045

Consultants:
Project Name:

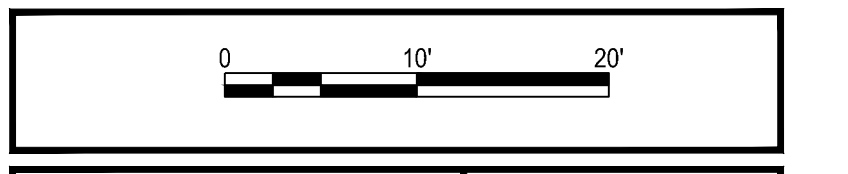
**MARRIOTT
RESORT
SAWGRASS
CABANA CLUB**
619 Ponte Vedra Boulevard
Ponte Vedra Beach, FL 32082

Site Map:

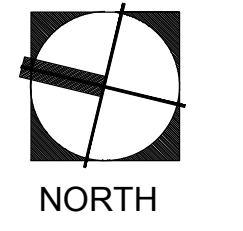
EDSA
1512 E. BROWARD BOULEVARD, SUITE 110
FORT LAUDERDALE, FLORIDA 33301 USA
TEL: 954.524.3330
www.edsaplan.com
LCS000001
PLANNING-LANDSCAPE ARCHITECTURE-URBAN DESIGN

Rev:	Date:	Description:	By:

Sheet Title:
**SITE PREPARATION
PLAN**

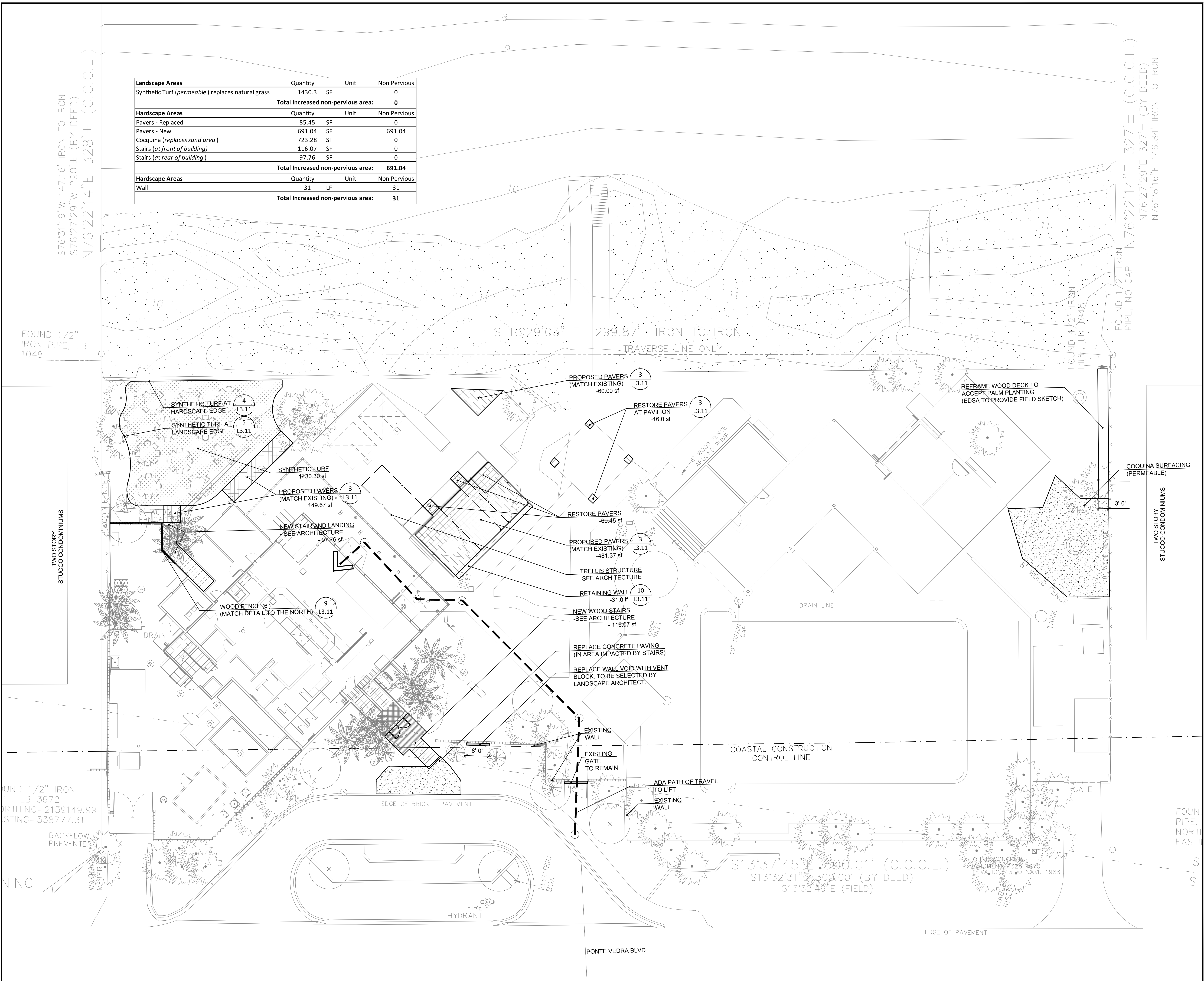


Date: 2015.11.23
Designed By: EDSA
Drawn By: EDSA
Approved By: EDSA
Project No: 114216



Seal: Sheet Number:
L2.01

Landscape Areas	Quantity	Unit	Non Pervious
Synthetic Turf (permeable) replaces natural grass	1430.3	SF	0
Total Increased non-pervious area:			0
Hardscape Areas	Quantity	Unit	Non Pervious
Pavers - Replaced	85.45	SF	0
Pavers - New	691.04	SF	691.04
Cocquina (replaces sand area)	723.28	SF	0
Stairs (at front of building)	116.07	SF	0
Stairs (at rear of building)	97.76	SF	0
Total Increased non-pervious area:			691.04
Hardscape Areas	Quantity	Unit	Non Pervious
Wall	31	LF	31
Total Increased non-pervious area:			31



Drawing name: G:\Projects\BD114216 Sawgrass Marriott 20192_EDSAB02_CONSTRUCTION DOCUMENTS\CABANA CLUB\14216_3.01_CD-CABANA-HSCP PLAN.dwg L3.01 Jan 13, 2016 1:54pm by: a/enech

Client:
 Watermark Capital Partners, LLC
 WATERMARK CAPITAL PARTNERS
 272 EAST DEERPATH ROAD, SUITE 230
 LAKE FOREST, IL 60045

Consultants:

Project Name:



Site Map:

EDSA
 1512 E. BROWARD BOULEVARD, SUITE 110
 FORT LAUDERDALE, FLORIDA 33301 USA
 TEL: 954.524.3330
 www.edsaplan.com
 LCC000001
 PLANNING • LANDSCAPE ARCHITECTURE • URBAN DESIGN

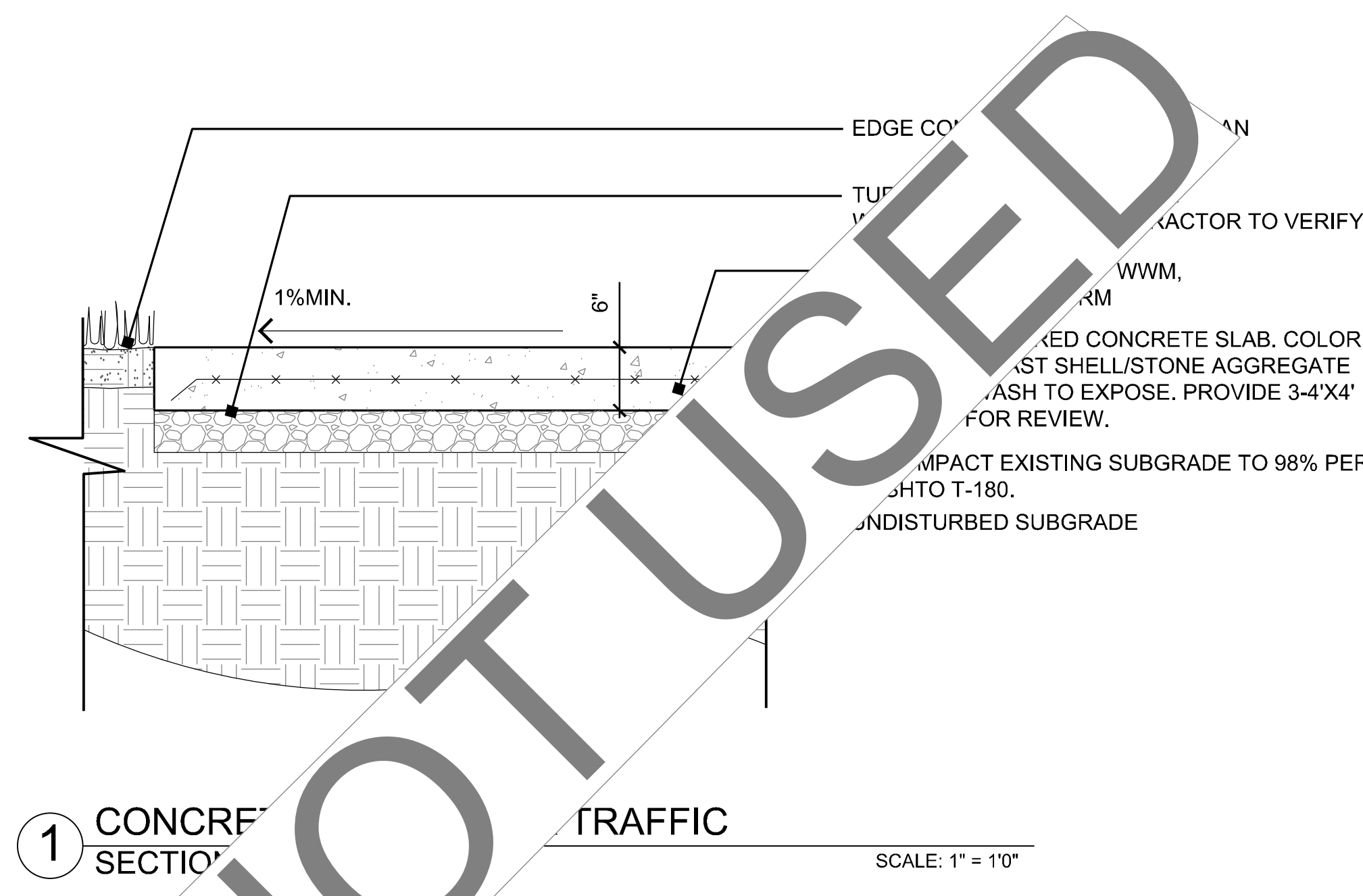
Rev:	Date:	Description:	By:
1			
2			
3			
4			
5			
6			
7			
8			
9			
10			

Sheet Title:
HARDSCAPE PLAN

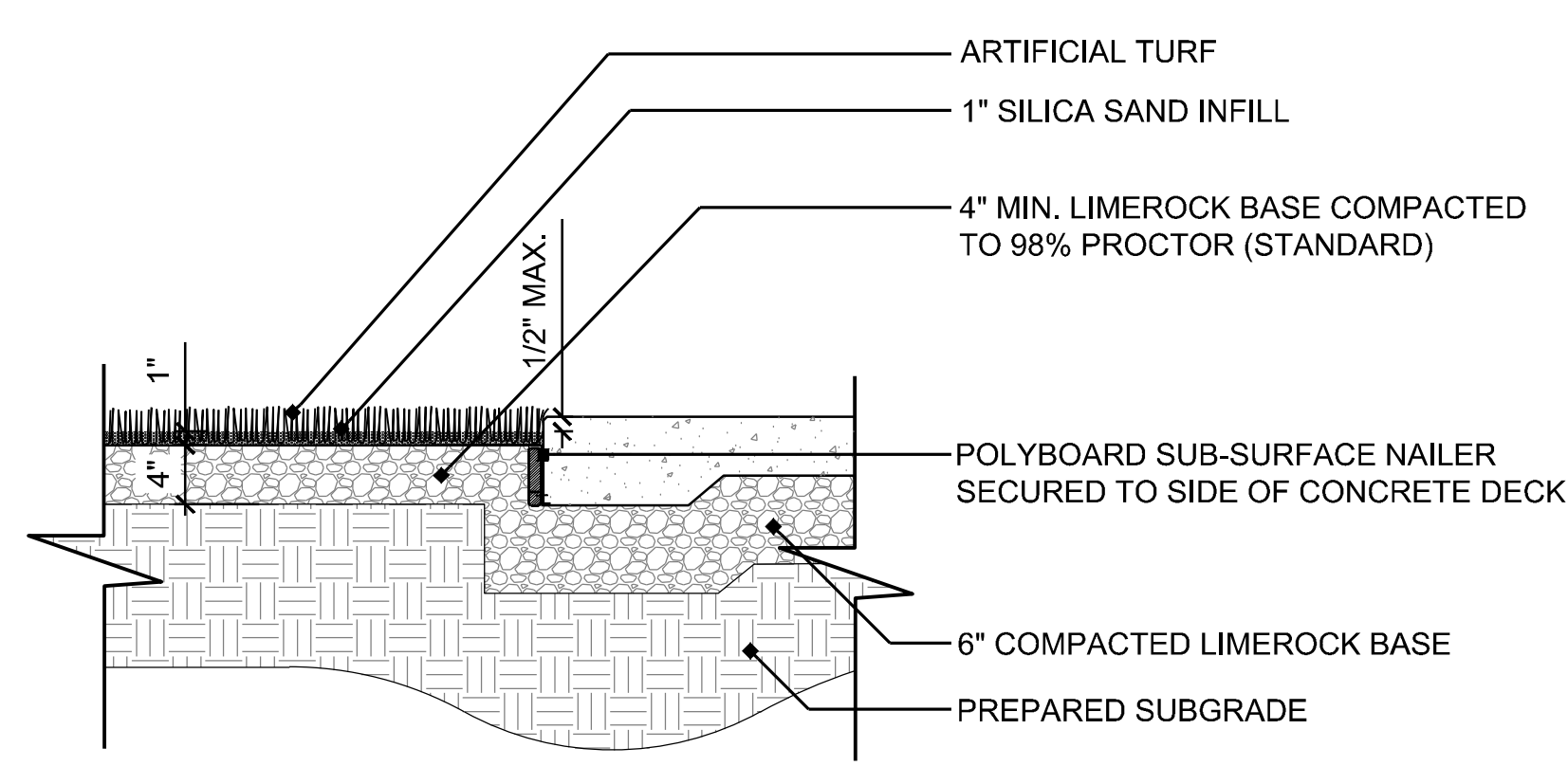
Date: 2015.11.23
 Designed By: EDSA
 Drawn By: EDSA
 Approved By: EDSA
 Project No: 114216

Seal: Sheet Number:
L3.01

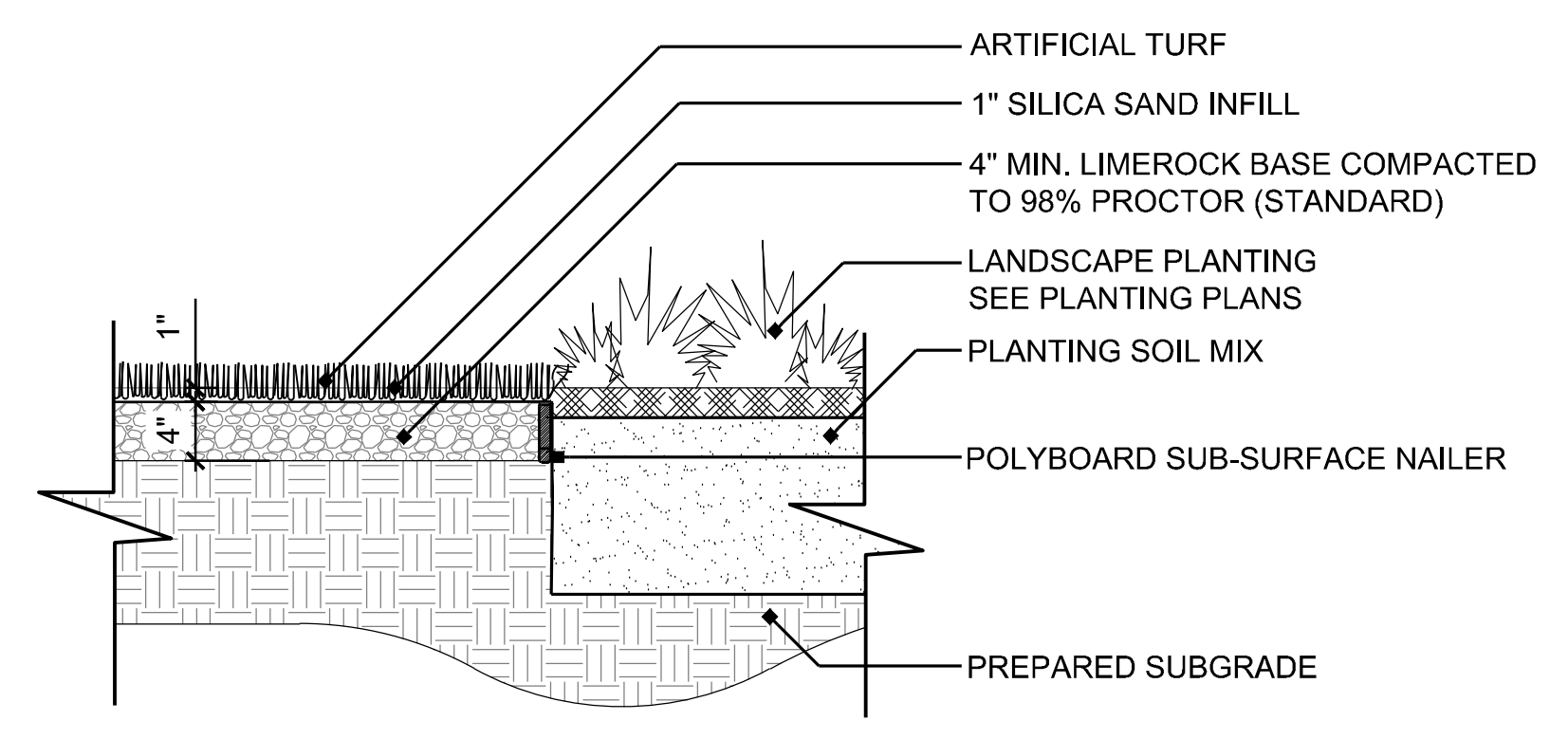
Drawing name: G:\Projects\BD\114216 Sawgrass Marriott\20152_EDSAtoc02_CONSTRUCTION DOCUMENTS\CABANA CLUB\114216\3.11-CD-CABANA-HARDSCAPE\DETAILS.dwg L3.11 Nov 24, 2015 3:49pm by: afelech



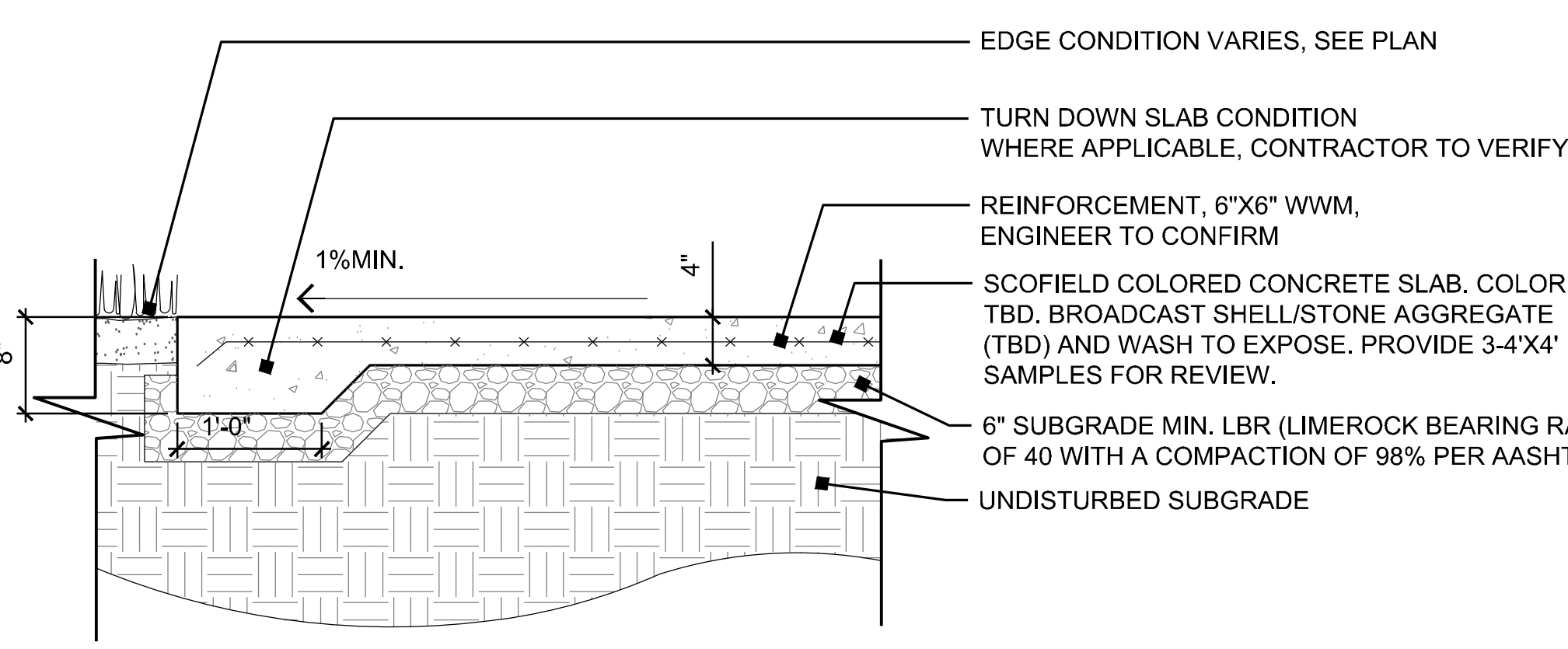
1 CONCRETE - TRAFFIC SECTION SCALE: 1" = 10"



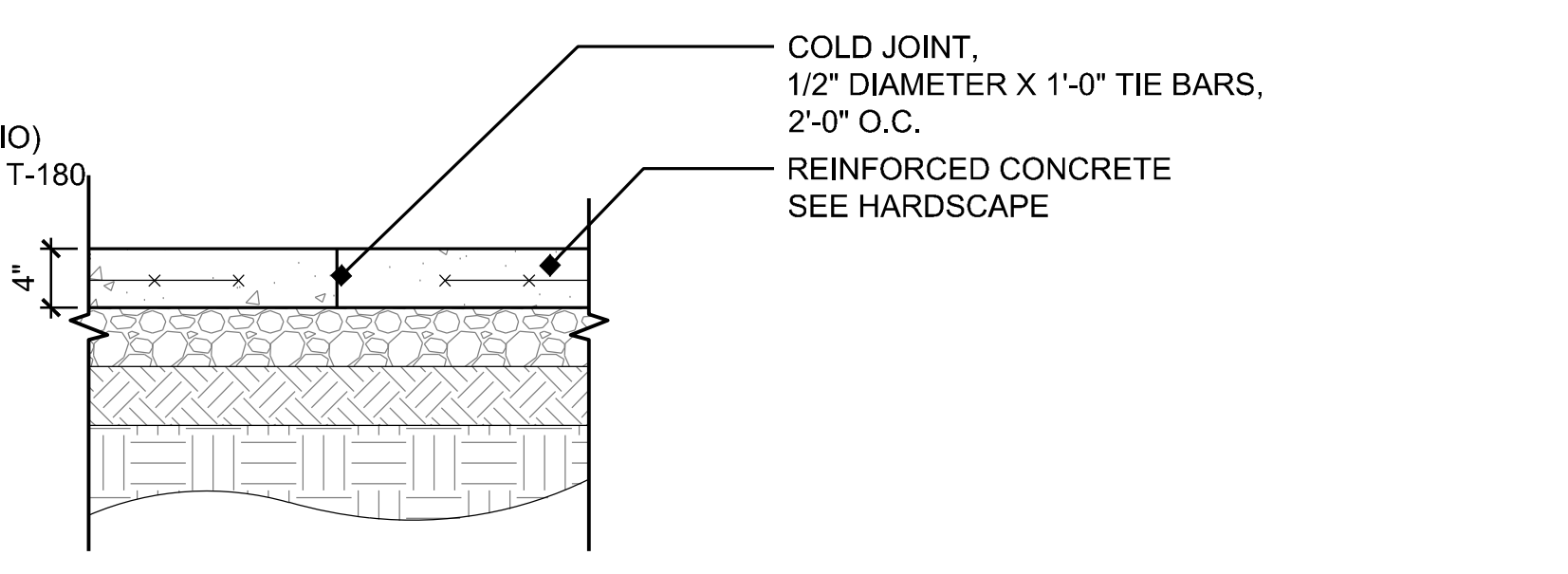
4 SYNTHETIC TURF AT HARDSCAPE EDGE SECTION SCALE: 1" = 1'-0"



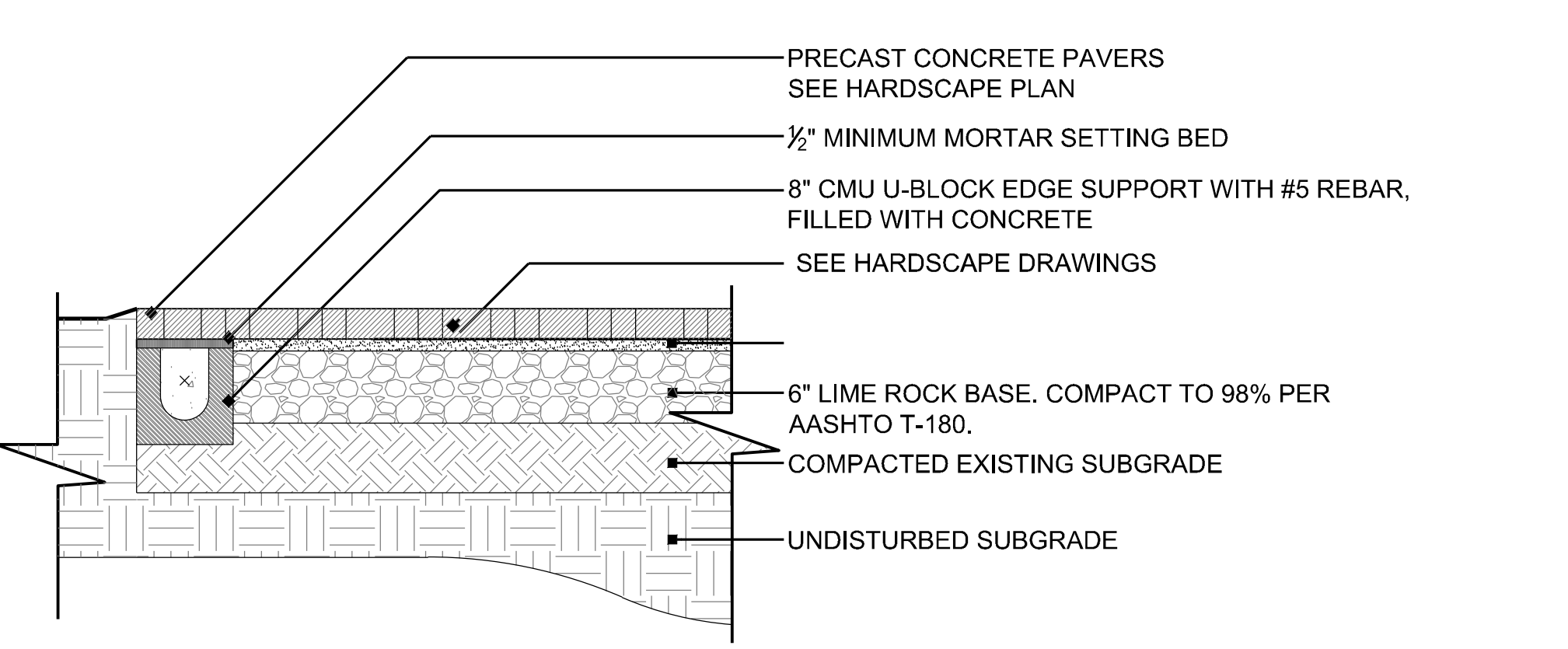
5 SYNTHETIC TURF AT LANDSCAPE EDGE SECTION SCALE: 1" = 1'-0"



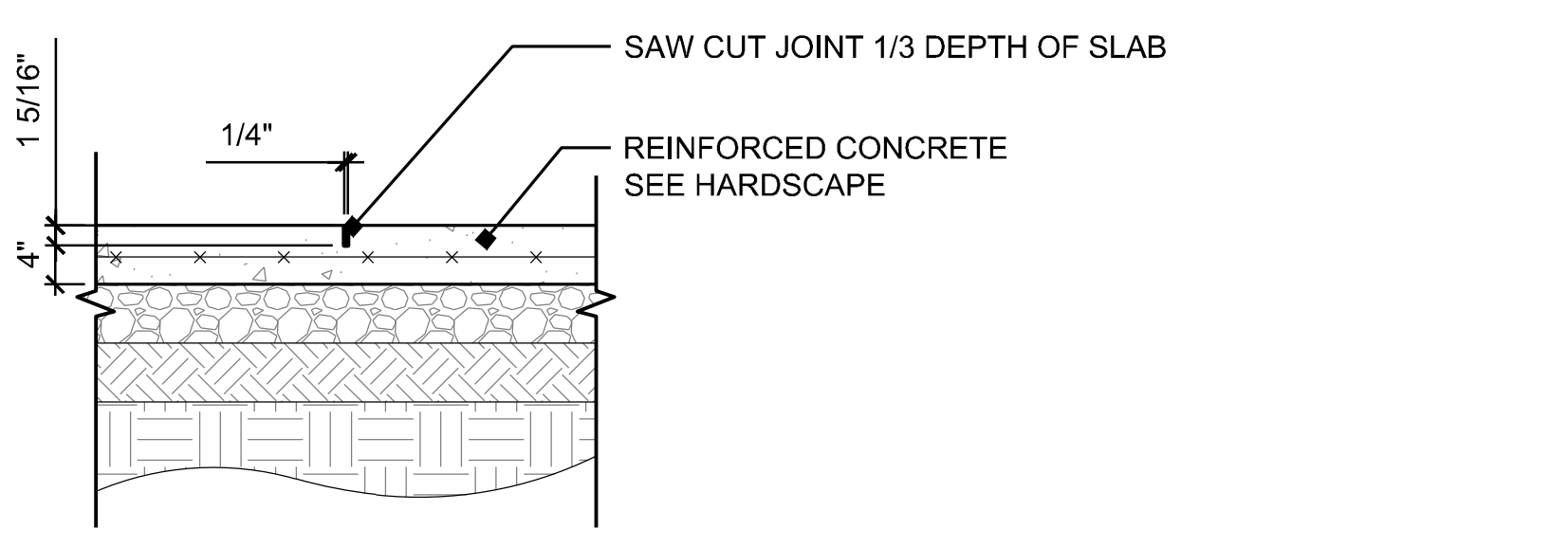
2 CONCRETE - PEDESTRIAN TRAFFIC SECTION SCALE: 1" = 10"



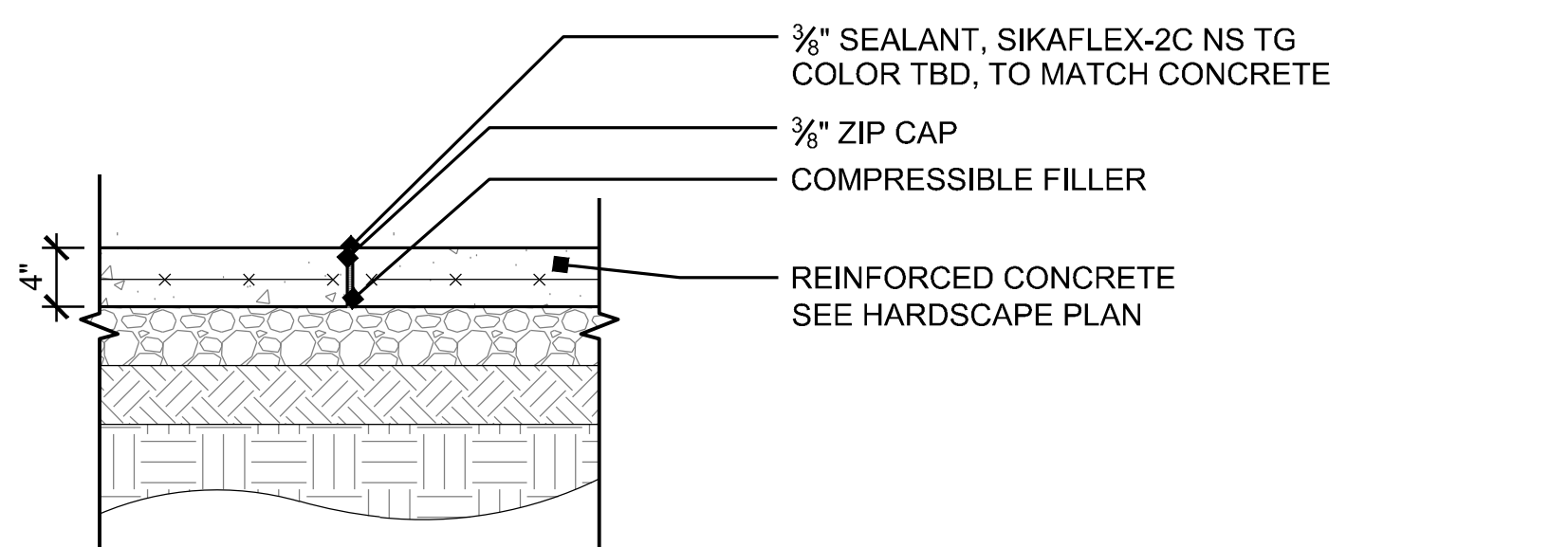
6 COLD JOINT SECTION SCALE: 1" = 10"



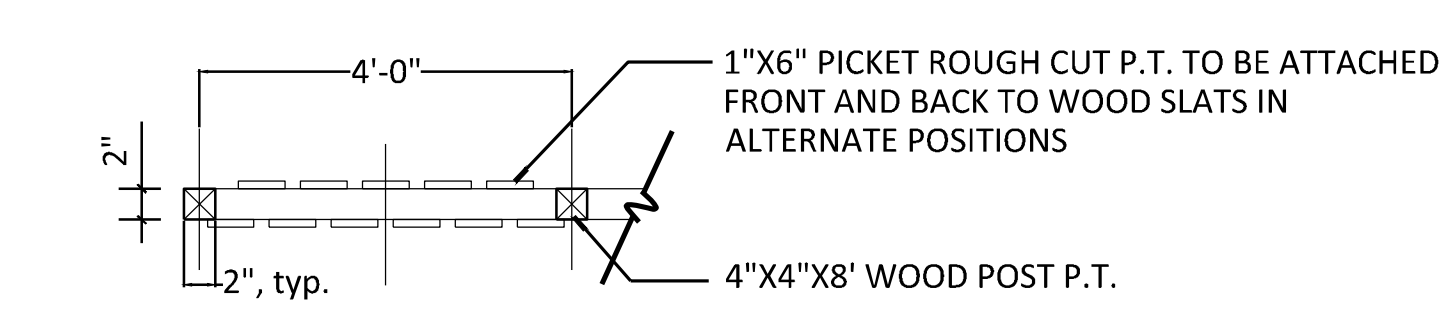
3 PRECAST PAVERS SECTION SCALE: 1" = 1'-0"



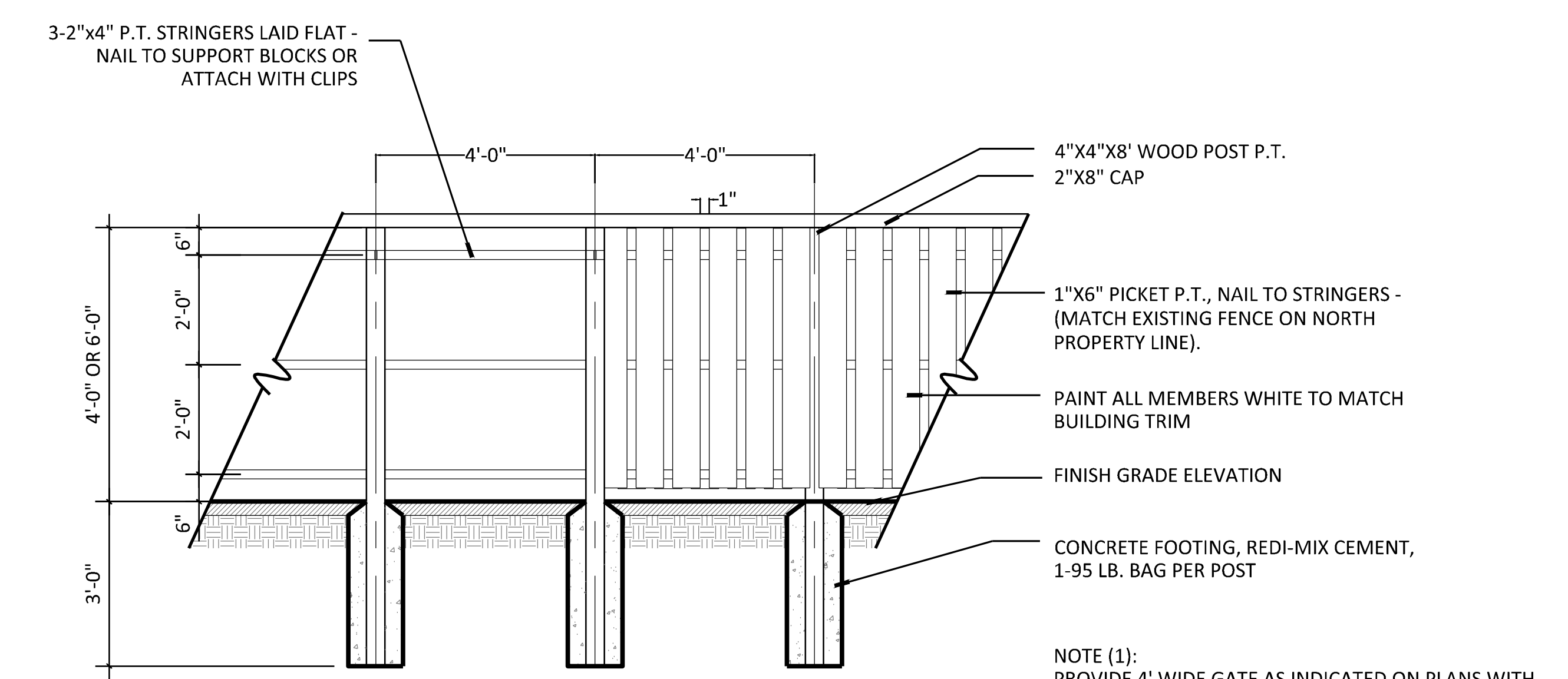
7 CONTROL JOINT SECTION SCALE: 1" = 10"



8 EXPANSION JOINT SECTION SCALE: 1" = 10"



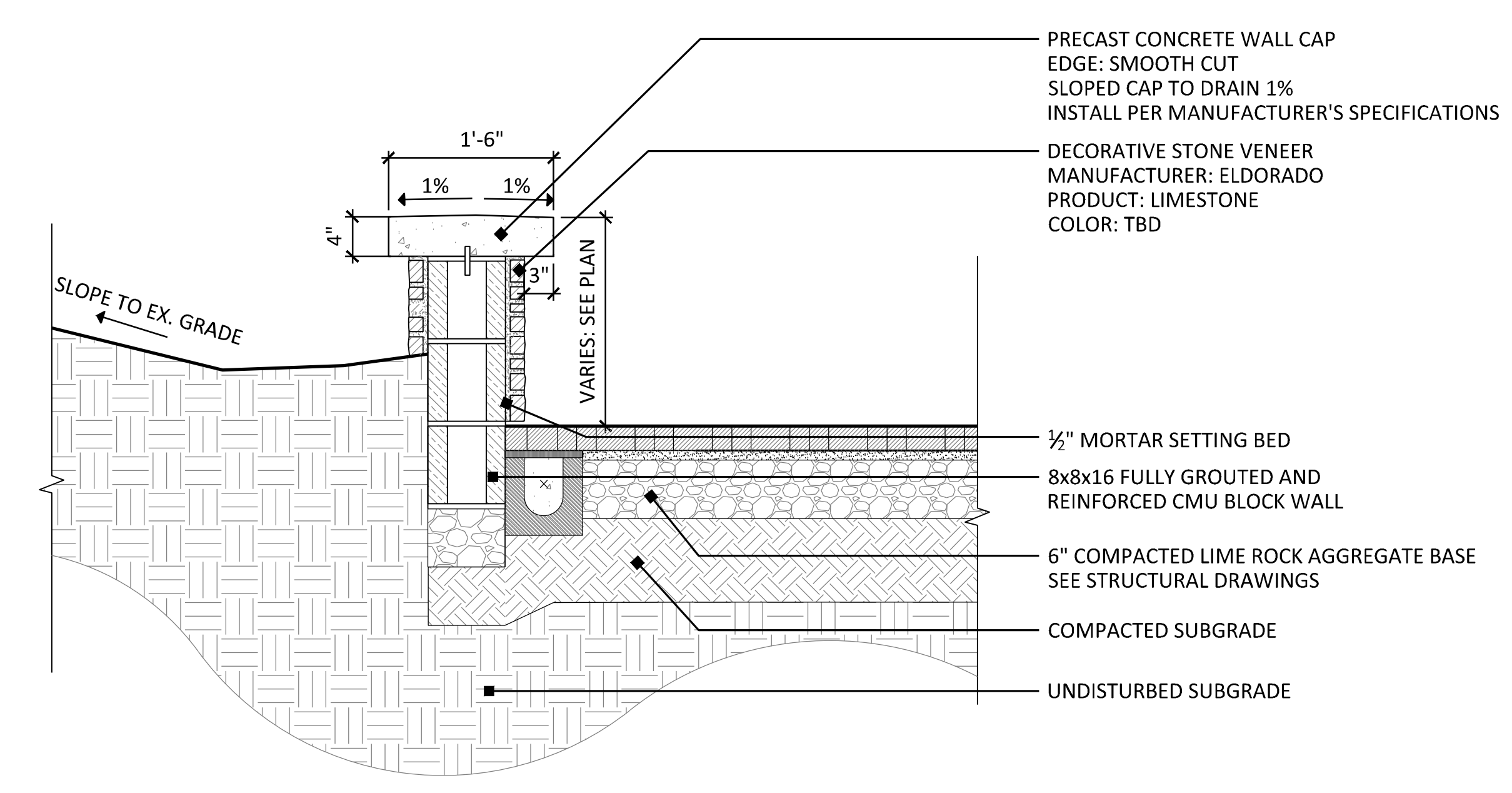
PLAN



SECTION

NOTE (1): PROVIDE 4' WIDE GATE AS INDICATED ON PLANS WITH SELF-CLOSING/ SELF-LATCHING MECHANISM
NOTE (2): CONTRACTOR TO PROVIDE ENGINEERED SHOP DRAWINGS.

9 WOOD FENCE (4' and 6') SECTION SCALE: 1/2" = 1'-0"



10 RETAINING WALL SECTION SCALE: 1" = 1'-0"

Client: Watermark Capital Partners, LLC
WATERMARK CAPITAL PARTNERS
272 EAST DEERPATH ROAD, SUITE 230
LAKE FOREST, IL 60045

Consultants:

Project Name:



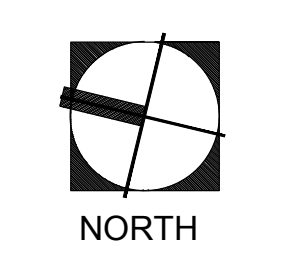
Site Map:

EDSA 1512 E. BROWARD BOULEVARD, SUITE 110
FORT LAUDERDALE, FLORIDA 33301 USA
TEL: 954.524.3330
www.edsaplan.com
LIC#00001

Rev.	Date	Description	By:

Sheet Title: **HARDSCAPE DETAILS**

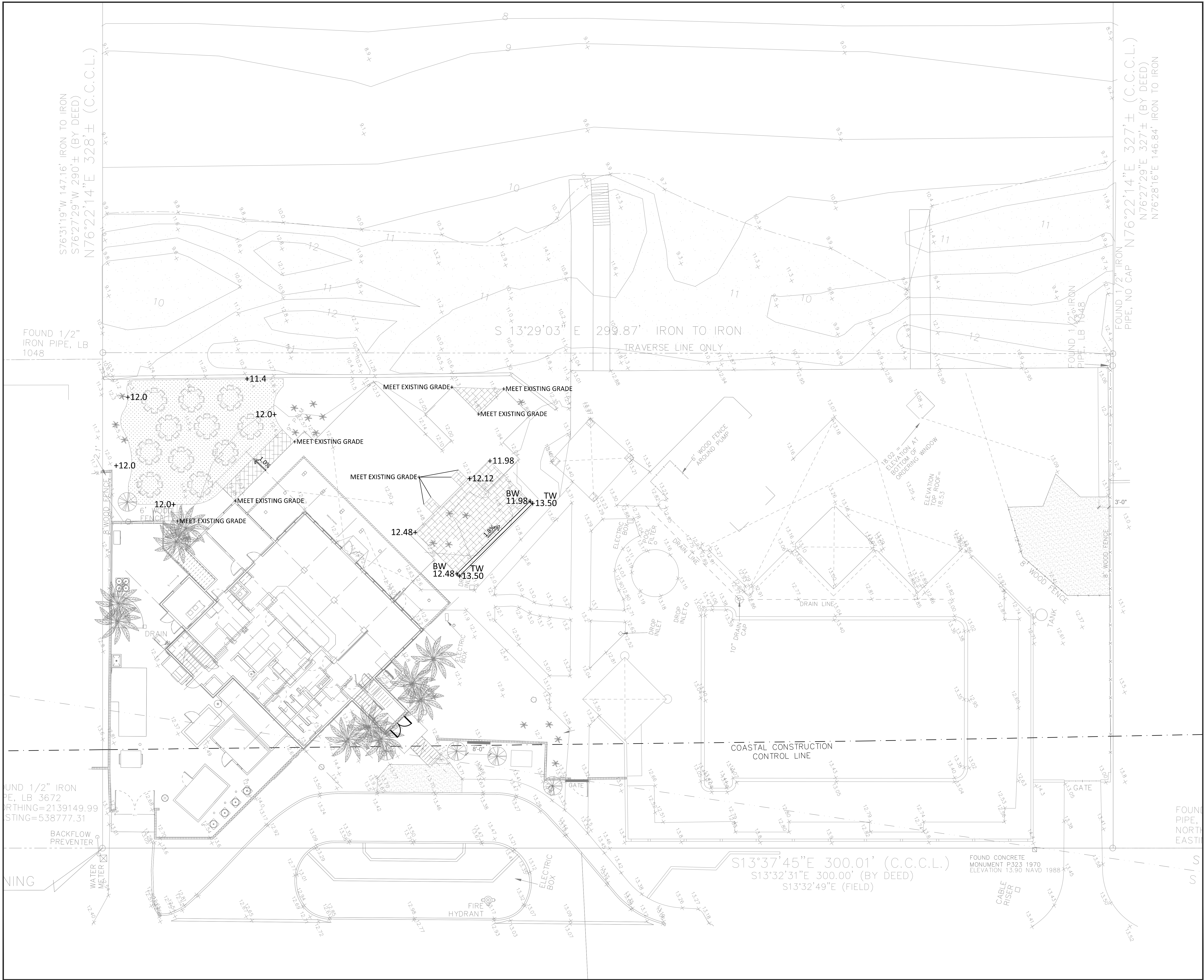
Date: 2015.11.23
Designed By: EDSA
Drawn By: EDSA
Approved By: EDSA
Project No: 114216



Seal: Sheet Number:

L3.11

Drawing name: G:\Projects\BD114216 Sawgrass Marriott 20192_EDSA\ac02_CONSTRUCTION DOCUMENTS\CABANA CLUB\114216_L4.01-CD-CABANA-GRADING-PLAN.dwg L1.01 Jan 07, 2016 7:15pm by: afelech



S76°31'19"W 147.16' IRON TO IRON
S76°27'29"W 290'± (BY DEED)
N76°22'14"E 328'± (C.C.C.L.)

FOUND 1/2" IRON PIPE, LB 1048

S 13°29'03" E 290.87' IRON TO IRON
TRAVERSE LINE ONLY

FOUND 1/2" IRON PIPE, NO CAP N76°22'14"E 327'± (C.C.C.L.)
N76°27'29"E 327'± (BY DEED)
N76°28'16"E 146.84' IRON TO IRON

FOUND 1/2" IRON PIPE, LB 3672
BIRTHING=2139149.99
STING=538777.31

BACKFLOW PREVENTER

S13°37'45"E 300.01' (C.C.C.L.)
S13°32'31"E 300.00' (BY DEED)
S13°32'49"E (FIELD)

FOUND CONCRETE MONUMENT P323 1970
ELEVATION 13.90 NAVD 1988

Client:
Watermark Capital Partners, LLC

WATERMARK CAPITAL PARTNERS
272 EAST DEERPATH ROAD, SUITE 230
LAKE FOREST, IL 60045

Consultants:

Project Name:



Site Map:

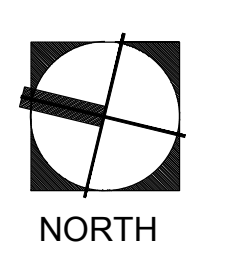
EDSA
1512 E. BROWARD BOULEVARD, SUITE 110
FORT LAUDERDALE, FLORIDA 33301 USA
TEL: 954.524.3330
www.edsaplan.com
LIC#098991
PLANNING-LANDSCAPE ARCHITECTURE-URBAN DESIGN

Rev:	Date:	Description:	By:
1			
2			
3			
4			
5			

Sheet Title:
GRADING PLAN



Date: 2015.11.23
Designed By: EDSA
Drawn By: EDSA
Approved By: EDSA
Project No: 114216



Sheet Number:

L4.01

Drawing name: G:\Projects\BD1142\16 Sawgrass Marriott 2015\2_EDSA\doc02_CONSTRUCTION DOCUMENTS\CABANA CLUB\L5 NOTES AND SCHEDULE.dwg L5.00 Nov 24, 2015 3:23pm by: afenech

PLANTING NOTES:

- LANDSCAPE CONTRACTOR SHALL COORDINATE ALL WORK WITH RELATED CONTRACTORS AND WITH THE GENERAL CONSTRUCTION OF THE PROJECT IN ORDER NOT TO IMPED THE PROGRESS OF THE WORK OF OTHERS OR THE CONTRACTOR'S OWN WORK. LANDSCAPE CONTRACTOR SHALL PROVIDE SCHEDULE OF HIS/HER WORKS AT A MINIMUM OF TWO WEEKS IN ADVANCE, BEGINNING TWO WEEKS PRIOR TO COMMENCING LANDSCAPE TRADE CONSTRUCTION.
- CONTRACTOR SHALL BE RESPONSIBLE TO REMOVE EXISTING GROUND COVER FOR ALL PLANTING BEDS AS SPECIFIED PRIOR TO PLANTING MATERIAL. CONTRACTOR SHALL BE RESPONSIBLE TO REPLACE ALL PORTIONS OF EXISTING LANDSCAPE AND HARDSCAPE AREAS DAMAGED TO THE SATISFACTION OF THE OWNER, ITS REPRESENTATIVE, OR LANDSCAPE ARCHITECT.
- THE LOCATIONS OF PLANTS, AS SHOWN IN THESE PLANS, ARE APPROXIMATE. THE FINAL LOCATIONS MAY BE ADJUSTED TO ACCOMMODATE UNFORESSEEN FIELD CONDITIONS TO COMPLY WITH SAFETY CRITERIA, TO AVOID CREATING UNSAFE SIGHT CONDITIONS, OR AS OTHERWISE DIRECTED BY OR APPROVED BY THE LANDSCAPE ARCHITECT.
- CONTRACTOR IS RESPONSIBLE FOR THE MAINTENANCE OF ALL PLANT MATERIALS, INCLUDING TEMPORARY IRRIGATION AND FERTILIZATION IF NECESSARY DURING CONSTRUCTION AND/OR WHILE BEING HELD IN LANDSCAPE HOLDING AREAS.
- THE CONTRACTOR SHALL BEAR ALL COSTS OF TESTING OF SOILS, AMENDMENTS, ETC. ASSOCIATED WITH THE WORK AND INCLUDED IN THE SPECIFICATIONS. PRIOR TO COMMENCEMENT OF THE LANDSCAPE PLANTING WORK THE CONTRACTOR SHALL PROVIDE COMPLETE SOIL TESTS INCLUDING CONTENT ANALYSIS WITH RECOMMENDATIONS FOR THE INSTALLATION AREA.
- ALL PLANT MATERIAL THAT MAY NEED TO BE REPLACED SHALL BE IN FULL AND STRICT ACCORDANCE TO FLORIDA NO. 1 GRADE, ACCORDING TO THE "GRADES AND STANDARDS FOR NURSERY PLANTS", PUBLISHED BY THE FLORIDA DEPARTMENT OF AGRICULTURE AND CONSUMER SERVICES. ALL REPLACEMENT MATERIAL SHALL MATCH THE SIZE AND QUALITY OF THE MATERIAL BEING REPLACED.
- LANDSCAPE CONTRACTOR SHALL FIELD STAKE THE LOCATION OF TREES AND ALL SHRUB BEDS PRIOR TO INITIATING INSTALLATION FOR THE REVIEW AND APPROVAL BY THE LANDSCAPE ARCHITECT. LANDSCAPE CONTRACTOR TO NOTIFY THE LANDSCAPE ARCHITECT AT LEAST 5 DAYS PRIOR TO REQUESTED REVIEW OF STAKED MATERIALS. EXCAVATION SHALL NOT BEGIN UNTIL LOCATIONS OF INDIVIDUAL PLANT AND PLANT BEDS ARE ACCEPTABLE TO THE LANDSCAPE ARCHITECT.
- LANDSCAPE CONTRACTOR SHALL FIELD ADJUST LOCATION OF PLANT MATERIAL AS NECESSARY DUE TO EXISTING SITE CONDITIONS. ALL CHANGES REQUIRED SHALL BE COMPLETED AT THE CONTRACTOR'S EXPENSE AND SHALL BE COORDINATED WITH THE LANDSCAPE ARCHITECT.
- ANY SUBSTITUTIONS IN SIZE AND/OR PLANT MATERIAL MUST BE APPROVED BY THE LANDSCAPE ARCHITECT PRIOR TO MODIFICATION OF THE CONTRACT. PURCHASING AND DELIVERY OF PLANTS: ALL PLANTS WILL BE SUBJECT TO APPROVAL BY LANDSCAPE ARCHITECT BEFORE PLANTING CAN BEGIN. ALL PLANT MATERIALS WILL NOT INCLUDE ANY PLANTS CONSIDERED TO BE INVASIVE. CONTRACTOR PROVIDE SOURCE LIST OF PLANT MATERIAL.
- CONTRACTOR SHALL REFER TO THE LANDSCAPE PLANTING DETAILS, GENERAL NOTES AND /OR SPECIFICATIONS FOR FURTHER AND COMPLETE LANDSCAPE PLANTING INSTRUCTIONS.
- LANDSCAPE CONTRACTOR SHALL COORDINATE ALL PLANTING WORK WITH PERMANENT OR TEMPORARY IRRIGATION WORK. LANDSCAPE CONTRACTOR SHALL BE RESPONSIBLE FOR ALL HAND WATERING AS REQUIRED TO SUPPLEMENT IRRIGATION WATERING AND RAINFALL. LANDSCAPE CONTRACTOR SHALL BE RESPONSIBLE FOR HAND WATERING IN ALL PLANTING AREAS, REGARDLESS OF THE STATUS OF EXISTING OR PROPOSED IRRIGATION UNTIL FINAL ACCEPTANCE OF THE PROJECT.
- LANDSCAPE CONTRACTOR SHALL CLEAN THE WORK AREAS AT THE END OF EACH WORKING DAY. RUBBISH AND DEBRIS SHALL BE COLLECTED AND DEPOSITED OFF-SITE DAILY. ALL MATERIALS, PRODUCTS AND EQUIPMENT SHALL BE STORED IN AN ORGANIZED FASHION AS DIRECTED BY THE OWNER, ITS REPRESENTATIVE, OR LANDSCAPE ARCHITECT.
- GUYING / STAKING PRACTICES SHALL NOT PERMIT NAILS, SCREWS, WIRES ETC. TO PENETRATE OUTER SURFACE OF TREE OR PALM. TREES OR PALMS REJECTED DUE TO THIS PRACTICE SHALL BE REPLACED AT THE CONTRACTOR'S EXPENSE.
- BURLAP MATERIAL, WIRE CAGES, PLASTIC STRAPS, ETC. MUST BE CUT AND REMOVED FROM TOP ONE - THIRD (1/3) OF ROOT BALL.
- TREES GROWN IN GROW BAGS OR GROW BAG TYPE MATERIAL ARE NOT ALLOWED.
- THE CONTRACTOR SHALL BE RESPONSIBLE FOR THE GUARANTEE OF ALL PLANT MATERIAL FOR A PERIOD OF TWELVE (12) MONTHS FROM THE DATE SUBSTANTIAL COMPLETION. SUBSTANTIAL COMPLETION CONSTITUTES THE BEGINNING OF GUARANTEE PERIOD.
- ALL EXISTING TREES TO REMAIN SHALL BE PROTECTED BY INSTALLING PROTECTIVE BARRIERS AROUND THE DRIP LINE OF TREES. THE PROTECTIVE BARRIERS SHALL BE SEEN EASILY BY OPERATORS OF TRUCKS AND OTHER EQUIPMENT. PROTECTIVE BARRIERS SHALL BE CONSTRUCTED OF STURDY MATERIALS (NOT FLAGGING OR RIBBONS) AND SHALL BE INSTALLED PRIOR TO AND MAINTENANCE THROUGHOUT CONSTRUCTION AND/OR LAND DEVELOPMENT:
 - DO NOT STORE OR USE MATERIALS OR EQUIPMENT WITHIN THE DRIP LINE OF ANY TREE TO BE RELOCATED ON SITE UNLESS THE ACTIVITY IS BEING DONE TO PROTECT TREES. DO NOT DISCHARGE OR CONTAMINATE THE SOIL WITHIN THE DRIP LINE OF ANY TREE TO BE RELOCATED ON SITE WITH ANY CONSTRUCTION MATERIALS SUCH AS PAINT, OIL, SOLVENTS, PET-ROLEUM PRODUCTS, ASPHALT, CONCRETE, MORTAR, OR OTHER MATERIALS THAT MAY CAUSE ADVERSE IMPACTS.
 - CLEARING OF VEGETATION WITHIN THE DRIP LINE OF TREES DESIGNATED FOR PRESERVATION SHALL ONLY BE BY HAND OR LIGHT RUBBER WHEELED EQUIPMENT THAT WILL NOT DAMAGE TREE ROOTS.

PLANTING NOTES CONTINUED:

- MAKE NO ATTACHMENTS, OTHER THAN THOSE OF A PROTECTIVE AND NON-DAMAGING NATURE, TO ANY TREE TO BE RETAINED ON THE SITE.
 - DO NOT CHANGE THE NATURAL GRADE ABOVE THE ROOT SYSTEM WITHIN THE DRIP LINE OF ANY TREE TO BE RETAINED ON SITE UNLESS IT CAN BE DEMONSTRATED TO THE CITY THAT IT WILL NOT DAMAGE THE TREE.
 - AVOID ANY ENCROACHMENTS, EXCAVATIONS OR SEVERE GRADE CHANGES WITHIN THE DRIPLINE OF PRESERVED TREES THAT WILL IMPACT ANY TREE SCHEDULE TO REMAIN.
- PLANT SIZE SPECIFICATIONS TAKE PRECEDENCE OVER CONTAINER SIZE.
 - CONTRACTOR TO VERIFY QUANTITIES AND REPORT ANY DISCREPANCIES TO THE OWNER, ITS REPRESENTATIVE, OR LANDSCAPE ARCHITECT.
 - ALL GROUND COVER SHALL HAVE A MINIMUM 50% COVERAGE AT INSTALLATION AND 100% COVERAGE IN 6 MONTHS.
 - EXCAVATE ALL PLANTING ISLANDS TO A MINIMUM OF 12" AND BACKFILL WITH SPECIFIED PLANTING MIX.
 - ALL ROOT BALLS SHALL CONFORM TO THE SIZE STANDARDS SET FORTH IN "AMERICAN STANDARDS FOR NURSERY STOCK".
 - ALL PLANT MATERIAL SHALL BE PROTECTED DURING TRANSPORT AND DELIVERY TO FINAL LOCATION WITH SHADE CLOTH OR OTHER ACCEPTABLE MEANS OF WINDBURN PREVENTION. ALL PLANT MATERIAL TO BE PLANTED ON THE SAME DAY IT ARRIVES ON SITE.
 - ALL PLANT MATERIAL SHALL BE INSTALLED IN A SOUND, WORKMAN-LIKE MANNER AND ACCORDING TO ACCEPTED GOOD PLANTING AND TREE RELOCATION PROCEDURES WITH THE QUALITY OF PLANT MATERIALS AS HEREINAFTER DESCRIBED. ALL ELEMENTS OF LANDSCAPING SHALL BE INSTALLED SO AS TO MEET ALL APPLICABLE ORDINANCES AND CODE REQUIREMENTS.
 - THERE SHALL BE NO CHAINS OR CABLES USED ON TREES OR PALMS. HANDLE WITH TWO INCH (2") MINIMUM WIDTH NYLON STRAPS OR EQUAL.
 - CONTRACTOR TO REPLACE REJECTED PLANT MATERIAL WITHIN TWO (2) WEEKS OF WRITTEN NOTICE AND GUARANTEE FOR TWELVE (12) MONTHS FROM DATE OF INSTALLATION.
 - CONTRACTOR SHALL MULCH ALL PLANT MATERIAL THROUGHOUT AND COMPLETELY TO A THREE INCH (3") DEPTH OF LOOSE, WEED FREE STERILIZED SHREDDED MULCH.
 - CONTRACTOR TO REQUEST INSPECTION OF PROJECT IN WRITING. IF ALL WORK IS SATISFACTORY AND COMPLETE IN ACCORDANCE WITH CONDITIONS OF CONTRACT DOCUMENTS, THEN THE OWNER, ITS REPRESENTATIVE, AND LANDSCAPE ARCHITECT SHALL DECLARE THE PROJECT SUBSTANTIALLY COMPLETE.
 - ALL PLANT MATERIAL IS TO BE TAGGED AT THE NURSERY BY CONTRACTOR. THE LANDSCAPE ARCHITECT MAY BE PRESENT DURING SELECTION AND TAGGING ACTIVITIES WITH NOTIFICATION AT LEAST 2 WEEKS IN ADVANCE.
 - PROTECT PLANTS DURING DELIVERY TO PREVENT DAMAGE TO ROOT BALL OR DESICCATION OF LEAVES AND FRONDS.
 - NOTIFY THE LANDSCAPE ARCHITECT OF DELIVERY SCHEDULE IN ADVANCE SO PLANT MATERIAL MAY BE INSPECTED UPON ARRIVAL AT JOB SITE.
 - REMOVE UNACCEPTABLE PLANT MATERIAL IMMEDIATELY FROM JOB SITE.
 - DELIVER FERTILIZER TO SITE IN ORIGINAL UNOPENED CONTAINERS BEARING MANUFACTURER'S GUARANTEED CHEMICAL ANALYSIS, NAME, TRADE NAME, TRADEMARK, AND CONFORMANCE TO FLORIDA STATE LAW.
 - PROTECT ROOTS OF PLANT MATERIAL FROM DRYING OR OTHER POSSIBLE INJURY. KEEP PLANT BALL MOIST AT ALL TIMES.
 - REPAIR DAMAGE TO OTHER PLANTS OR CONSTRUCTION WORK DURING PLANT PLACEMENT AND/OR REPLACEMENT INCLUDING, BUT NOT LIMITED TO, DAMAGE TO EXISTING TREES, WALKS, STRUCTURES, SITE FURNISHINGS, ETC.
 - NURSERY GROWN STOCK SHALL BE GROWN UNDER CLIMATIC CONDITIONS SIMILAR TO THOSE IN THE LOCALITY OF THE PROJECT.
 - TEST FILL TREE PITS WITH WATER BEFORE PLANTING TO ASSURE PROPER DRAINAGE AND PERCOLATION IS AVAILABLE. PITS THAT ARE FOUND TO NOT BE ADEQUATELY DRAINING SHALL BE EXCAVATED TO A DEPTH SUFFICIENT FOR DRAINAGE AND BACKFILLING WITH COARSE SAND, AND 6 INCHES OF PLANTING SOIL ADDED BELOW THE ROOT BALL AND COMPACTED BY FLOODING PRIOR TO PLANTING. NO ALLOWANCE WILL BE MADE FOR LOST PLANTS DUE TO IMPROPER DRAINAGE. REPLACE WITH SAME SPECIES SIZE AND SPECIFICATION.

- PLANTING
 - GENERAL
 - IRRIGATION SHALL BE 100% OPERATIONAL PRIOR TO PLANT MATERIAL INSTALLATION, IF APPLICABLE.
 - THE LANDSCAPE ARCHITECT SHALL RESERVE THE RIGHT TO REJECT ANY AND ALL PLANT MATERIAL NOT MEETING SPECIFICATIONS AT THE JOB SITE.
 - REMOVE BURLAP FROM TOP 1/2 OF ROOT BALL.
 - CENTER PLANT IN PIT OR TRENCH.
 - FACE FOR BEST EFFECT, OR AS DIRECTED BY THE LANDSCAPE ARCHITECT.
 - SET PLANT PLUMB AND HOLD RIGIDLY IN POSITION UNTIL SOIL HAS BEEN TAMPED FIRMLY AROUND PLANTING BALL.
 - USE ONLY PLANTING SOIL BACKFILL AS SPECIFIED ON THIS SHEET - SOIL PREPARATION AND MIXES.
 - PLACE SUFFICIENT PLANTING SOIL UNDER PLANT TO BRING TOP OF PLANTING BALL TO FINISH GRADE.
 - BACKFILL PIT OR TRENCH WITH PLANTING SOIL IN 9 -INCH LAYERS AND WATER EACH LAYER THOROUGHLY TO SETTLE SOIL AND WORK SOIL COMPLETELY AROUND ROOTS AND PLANTING BALL.
 - AFTER SOIL SETTLES FILL PIT WITH PLANTING SOIL, WATER, AND LEAVE PIT SURFACE EVEN WITH FINISH GRADE.

PLANTING NOTES CONTINUED:

- TOPSOIL BERM:
 - CONSTRUCT A TOPSOIL BERM 6-INCHES ABOVE FINISH GRADE FORMING A WATERING BASIN WITH A LEVEL BOTTOM AROUND EACH PALM OR TREE.
 - THE TOPSOIL BERM SHALL FORM A WATERING BASIN 1 FOOT GREATER THAN DIAMETER OF PLANTING BALL.
 - COMPLETELY MULCH WATERING BASIN AND BERM TO AVOID ANY EXPOSED DIRT.
 - BRACES SHALL BE INSTALLED, AS SPECIFIED HEREIN, WHILE THE TREE IS SUPPORTED BY MACHINERY.
- BALLED AND BURLAPPED PLANTS (B & B):
 - PLACE IN PIT ON PLANTING SOIL BACKFILL MATERIAL THAT HAS BEEN HAND-TAMPED PRIOR TO PLACING PLANT.
 - PLACE WITH BURLAP INTACT SO LOCATION OF GROUND LINE AT TOP OF BALL IS SAME AS AT NURSERY WHERE GROWN.
 - REMOVE BINDING AT TOP HALF OF THE PLANTING BALL AND CUT OFF EXPOSED BURLAP.
 - DO NOT PULL WRAPPING FROM UNDER PLANTING BALL.
 - DO NOT PLANT IF PLANTING BALL IS CRACKED, BROKEN, OR SHOWING EVIDENCE OF VOIDS BEFORE OR DURING PLANTING PROCESS. REPLACE WITH PLANT OF SAME SPECIES, SIZE, AND SPECIFICATION.

SOIL PREPARATION AND SOIL MIX :

- ALL PLANTS NOTED FOR REMOVAL SHALL BE REMOVED AND PROPERLY DISPOSED OF OFF-SITE AT CONTRACTOR'S EXPENSE UNLESS OTHERWISE NOTED.
- APPLY ROUNDUP (MANUFACTURED BY MONSANTO CORP.) ACCORDING TO MANUFACTURER'S RATE AND SPECIFICATION WITHIN LIMITS OF ALL AREAS TO BE PLANTED. PROTECT EXISTING PLANTS TO REMAIN FROM OVER SPRAY OR SPRAY WITHIN ROOT ZONE. CONTRACTOR TO ENSURE TOTAL WEED ERADICATION. CONTRACTOR TO PROVIDE MANUFACTURER'S SPECIFICATIONS FOR APPROVAL.
 - BEFORE REPLACING TOPSOIL, RAKE SUBSOIL SURFACE CLEAR OF STONES (1" DIAMETER AND LARGER), RUBBISH, AND REMAINING ROOTS FROM REMOVED PLANT MATERIAL.
 - SCARIFY SUBSOIL TO A DEPTH OF THREE INCHES (3").
 - CONTRACTOR TO APPLY "SURFLAN" OR APPROVED PRE-EMERGENT HERBICIDE IN ACCORDANCE WITH MANUFACTURER'S RATE AND SPECIFICATIONS. CONTRACTOR TO PROVIDE MANUFACTURER'S SPECIFICATIONS FOR APPROVAL.
 - PLANTING SOIL MIX FOR TREES, SHRUBS, AND GROUND COVER SHALL CONSIST OF A THOROUGHLY BLENDED MIXTURE OF:
 - PALMS
 - 90% CLEAN D.O.T. SAND
 - 10% APPROVED TOPSOIL/FLORIDA PEAT MIXTURE
 - TREES, SHRUBS, GROUND COVER
 - 70% CLEAN DOT SAND
 - 30% APPROVED TOPSOIL/FLORIDA PEAT MIXTURE
 - FLORIDA PEAT SHALL BE FREE OF DELETERIOUS MATERIALS THAT WOULD BE HARMFUL TO PLANT GROWTH, SHALL BE FREE OF NEMATODES, SHALL BE OF UNIFORM QUALITY, AND SHALL BE STERILIZED TO MAKE FREE OF ALL VIABLE NUT GRASS AND OTHER UNDESIRABLE WEEDS. FLORIDA PEAT SHALL HAVE A PH VALUE BETWEEN 6.5 AND 7.5 (AS DETERMINED IN ACCORDANCE WITH ASTM E70). 6.5. IF NECESSARY, THE CONTRACTOR SHALL APPLY THE APPROPRIATE SOIL AMENDMENTS ADJUSTING SOIL PH TO ASSURE A PH RANGE OF 5.5 TO 6.5.
 - TOPSOIL SHALL BE NATURAL, FERTILE, AGRICULTURAL SOIL CAPABLE OF SUSTAINING VIGOROUS PLANT GROWTH. IT SHALL BE OF UNIFORM COMPOSITION THROUGHOUT, WITH ADMIXTURE OF SUBSOIL. IT SHALL BE FREE OF STONES, LUMPS, LIVE PLANTS AND THEIR ROOTS, STICKS, AND OTHER EXTRANEIOUS MATTER. SPREAD TOPSOIL MIXTURE TO MINIMUM DEPTH OF 12" IN ALL LANDSCAPE AREAS AND 4" THROUGH-OUT ALL LAWN AREAS. REMOVE ALL ROCKS AND OTHER OBJECTS OVER 1" IN DIAMETER.
 - SMOOTH ALL SOIL MIXTURE TO FIVE INCHES (5") BELOW TOP OF SURROUNDING PAVEMENT EDGES.
 - CONTRACTOR TO PROVIDE MINIMUM DRESSING OF THREE INCHES (3") OF MULCH TO ALL LANDSCAPE AREAS, TYP.
 - FINISH GRADE ALL TOPSOIL AREAS TO A SMOOTH, EVEN SURFACE, ASSURING POSITIVE DRAINAGE AWAY FROM THE STRUCTURES AND ELIMINATE ANY LOW AREAS WHICH MAY COLLECT WATER.
 - CONTRACTOR TO REMOVE DEBRIS AND EXCESS MATERIAL IMMEDIATELY FROM JOB SITE.
 - TEST FILL TREE PITS WITH WATER BEFORE PLANTING TO ASSURE PROPER DRAINAGE AND PERCOLATION IS AVAILABLE. THE RELATIVE PERMEABILITY OF THE SOIL SHALL BE 20IN/HR. MIN. PITS THAT ARE FOUND TO NOT BE ADEQUATELY DRAINING SHALL BE EXCAVATED TO A DEPTH SUFFICIENT FOR DRAINAGE AND BACKFILLING WITH COARSE SAND, AND 6 INCHES OF PLANTING SOIL ADDED BELOW THE ROOT BALL AND COMPACTED BY FLOODING PRIOR TO PLANTING. NO ALLOWANCE WILL BE MADE FOR LOST PLANTS DUE TO IMPROPER DRAINAGE. REPLACE WITH SAME SPECIES SIZE AND SPECIFICATION.

SOIL PREPARATION AND SOIL MIX CONTINUED:

- SUBMITTALS:
 - TEST REPORTS
 - RESULTS OF TOPSOIL ANALYSIS
 - RESULTS OF WATER ANALYSIS
 - RESULTS OF PLANTING SOIL MIX ANALYSIS, INCLUDING CONTENT ANALYSIS
 - CERTIFICATES
 - MANUFACTURERS CERTIFICATION AND/OR TESTING LABORATORY CERTIFICATION THAT CONTENT OF SOIL CONDITIONERS MEET SPECIFIED REQUIREMENTS
 - LITERATURE AND PROPOSED APPLICATION RATES OF SOIL AMENDMENTS
 - LITERATURE AND PROPOSED APPLICATION RATES FOR ALL HERBICIDES AND STERILIZERS
- MECHANICAL ANALYSIS FOR WELL-GRADED TOPSOIL SHALL BE AS FOLLOWS:

SIEVE SIZE	PERCENTAGE PASSING BY DRY WEIGHT
1/4 IN.	90-92%
NO. 10	50-55%
NO. 40	20-25%
NO. 100	4-6%
NO. 200	0-1%
- CONTRACTOR SHALL REMOVE ALL STAKING OF TREES AND PALMS AFTER TWELVE (12) MONTHS OF SUBSTANTIAL COMPLETION.
- SOIL AMENDMENTS:
 - FERTILIZER
 - ALL FERTILIZERS SHALL BE MANUFACTURED FROM QUALITY MATERIALS, BE FREE FROM IMPURITIES, UNIFORM IN COMPOSITION, MEET RECOGNIZED STANDARDS FOR EFFECTIVENESS, AND BE FREE FLOWING AND SUITABLE FOR APPLICATION WITH APPROVED EQUIPMENT.
 - ALL FERTILIZER SHALL BE DELIVERED TO THE SITE IN BAGS OR OTHER CONVENIENT CONTAINERS, EACH FULLY LABELED, CONFORMING TO THE APPLICABLE STATE FERTILIZER LAWS, AND BEARING THE GRADE AND THE TRADE NAME OF THE PRODUCER.
 - DIE HARD ROOT REVIVER - ENDO AND ECTOMYCORRIZAL INOCULANT, AS MANUFACTURED BY DIE HARD, 1-(800)628.6373 OR APPROVED EQUAL.
 - DIE HARD TRANSPLANT - ONE STEP - ENDO AND ECTOMYCORRIZAL INOCULANT, AS MANUFACTURED BY DIE HARD, 1-(800)628.6373 OR APPROVED EQUAL.
 - DIE HARD PALM TRANSPLANT - ENDOMYCORRIZAL INOCULANT, AS MANUFACTURED BY DIE HARD, 1-(800)628.6373 OR APPROVED EQUAL.
 - TIME RELEASE, PALM MIX FERTILIZER WITH MINOR ELEMENTS OR APPROVED EQUAL.
 - TIME RELEASE, TREE AND SHRUB MIX FERTILIZER, 6-6-6, WITH MINOR ELEMENTS OR APPROVED EQUAL.
 - AGRIFORM PLANTING TABLETS, 8-8-8 PLUS MINORS, AS MANUFACTURED BY GRACE SIERRA, 1-(408) 263.8080 OR APPROVED EQUAL.
 - WETTING AGENT TO BE TERRA SORB OR APPROVED EQUAL.
 - SOIL CONDITIONER TO BE "SUPER LESCO WET", AS MANUFACTURED BY LESCO, INC. OR APPROVED EQUAL.
 - WATER: IT SHALL BE THE RESPONSIBILITY OF THE CONTRACTOR TO PROVIDE THE NECESSARY CLEAN AND POTABLE WATER TO THE SITE FOR USE IN WATERING.
 - SAND: CLEAN, SHARP, BUILDERS SAND, FREE DRAINING AND FREE OF SUBSTANCES HARMFUL TO GROWTH OF PLANTS.
 - PEAT: FLORIDA PEAT FROM APPROVED SOURCE.
 - COMPOST: FROM APPROVED SOURCE.

IRRIGATION NOTES:

- ALL SHRUB AREAS INDICATED ON PLANS WILL REQUIRE IRRIGATION ZONES TO BE RECONSTRUCTED AS EXTENSIONS OF THE EXISTING SYSTEM.
- ALL IRRIGATION TO PROVIDE 100% COVERAGE AND 50% OVERLAP.
- CONTRACTOR TO PROVIDE SHOP DRAWINGS INDICATING PIPE LAYOUT AND SIZING, HEAD LAYOUT AND TYPE.

NOTE: ALL AREAS WITHOUT PLANTING OR SOD SHOULD HAVE 2" OF MULCH.

Client:



WATERMARK CAPITAL PARTNERS
272 EAST DEERPATH ROAD, SUITE 230
LAKE FOREST, IL 60045

Consultants:


Project Name:



MARIOTT
RESORT
SAWGRASS
CABANA CLUB

619 Ponte Vedra Boulevard
Ponte Vedra Beach, FL 32082

Site Map:

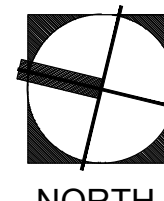


1512 E. BROWARD BOULEVARD, SUITE 110
FORT LAUDERDALE, FLORIDA 33301 USA
TEL: 954.524.3330
www.edsaplan.com
LIC0000091
PLANNING - LANDSCAPE ARCHITECTURE - URBAN DESIGN

Rev.	Date	Description	By:
1			
2			
3			
4			
5			
6			
7			
8			
9			
10			

Sheet Title:
LANDSCAPE NOTES AND SCHEDULE

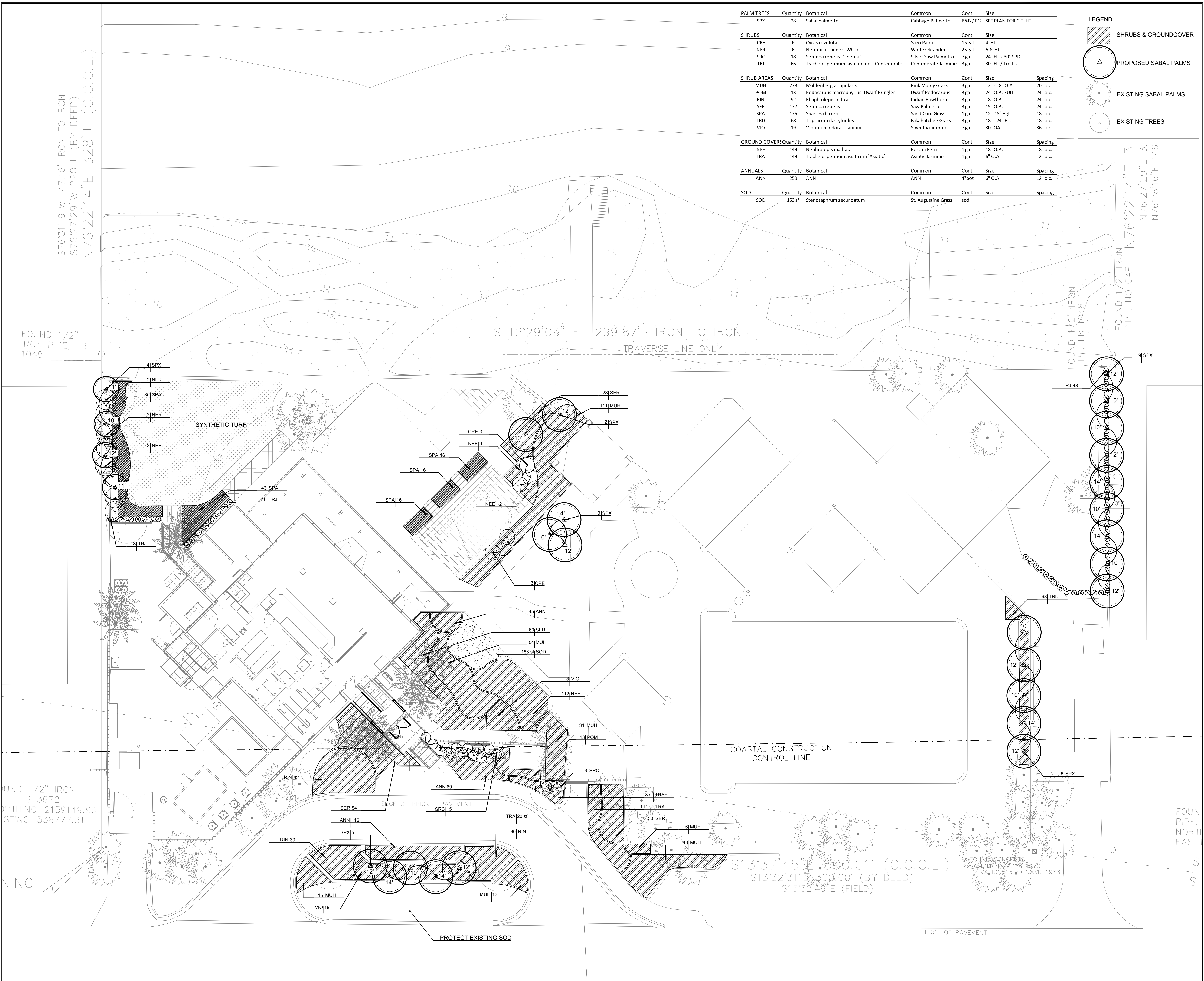
Date:	2015.11.23
Designed By:	EDSA
Drawn By:	EDSA
Approved By:	EDSA
Project No:	114216



NORTH

Seal: Sheet Number:
L5.00

Drawing name: G:\Projects\BD\14216 Sawgrass Marriott 20192_EDSAB02_CONSTRUCTION DOCUMENTS\CABANA CLUB\14216.L5.01-CD-CABANA-PLANTING PLAN.dwg L5.01 Jan 07, 2018 7:16pm by afenech



PALM TREES	Quantity	Botanical	Common	Cont	Size
SPX	28	Sabal palmetto	Cabbage Palmetto	B&B / FG	SEE PLAN FOR C.T. HT

SHRUBS	Quantity	Botanical	Common	Cont	Size
CRE	6	Cycas revoluta	Sago Palm	15 gal.	4' Ht.
NER	6	Nerium oleander "White"	White Oleander	25 gal.	6-8' HT.
SRC	18	Serenoa repens "Cinerea"	Silver Saw Palmetto	7 gal	24" HT x 30" SPD
TRJ	66	Trachelospermum jasminoides 'Confederate'	Confederate Jasmine	3 gal	30" HT / Trellis

SHRUB AREAS	Quantity	Botanical	Common	Cont.	Size	Spacing
MUH	278	Muhlenbergia capillaris	Pink Muhly Grass	3 gal	12" - 18" O.A.	20" o.c.
POM	13	Podocarpus macrophyllus 'Dwarf Pringles'	Dwarf Podocarpus	3 gal	24" O.A. FULL	24" o.c.
RIN	92	Rhaplolepis indica	Indian Hawthorn	3 gal	18" O.A.	24" o.c.
SER	172	Serenoa repens	Saw Palmetto	3 gal	15" O.A.	24" o.c.
SPA	176	Spartina bakeri	Sand Cord Grass	1 gal	12"-18" Hgt.	18" o.c.
TRD	68	Tripsacum dactyloides	Fakahatchee Grass	3 gal	18" - 24" HT.	18" o.c.
VIO	19	Viburnum odoratissimum	Sweet Viburnum	7 gal	30" OA	36" o.c.

GROUND COVER	Quantity	Botanical	Common	Cont	Size	Spacing
NEE	149	Nephrolepis exaltata	Boston Fern	1 gal	18" O.A.	18" o.c.
TRA	149	Trachelospermum asiaticum 'Asiatic'	Asiatic Jasmine	1 gal	6" O.A.	12" o.c.

ANNUALS	Quantity	Botanical	Common	Cont	Size	Spacing
ANN	250	ANN	ANN	4" pot	6" O.A.	12" o.c.

SOD	Quantity	Botanical	Common	Cont	Size	Spacing
SOD	153 sf	Stenotaphrum secundatum	St. Augustine Grass	sod		

LEGEND

- SHRUBS & GROUND COVER
- PROPOSED SABAL PALMS
- EXISTING SABAL PALMS
- EXISTING TREES

Client:
 Watermark Capital Partners, LLC
 WATERMARK CAPITAL PARTNERS
 272 EAST DEERPATH ROAD, SUITE 230
 LAKE FOREST, IL 60045

Consultants:

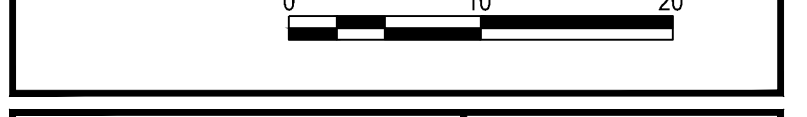
Project Name:
MARRIOTT RESORT SAWGRASS CABANA CLUB
 619 Ponte Vedra Boulevard
 Ponte Vedra Beach, FL 32082

Site Map:

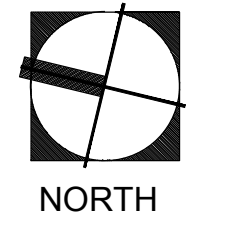
1512 E. BROWARD BOULEVARD, SUITE 110
 FORT LAUDERDALE, FLORIDA 33301 USA
 TEL: 954.524.3330
 www.edsaplan.com
 LCC000001
 PLANNING-LANDSCAPE ARCHITECTURE-URBAN DESIGN

Rev:	Date:	Description:	By:
1			
2			
3			
4			
5			

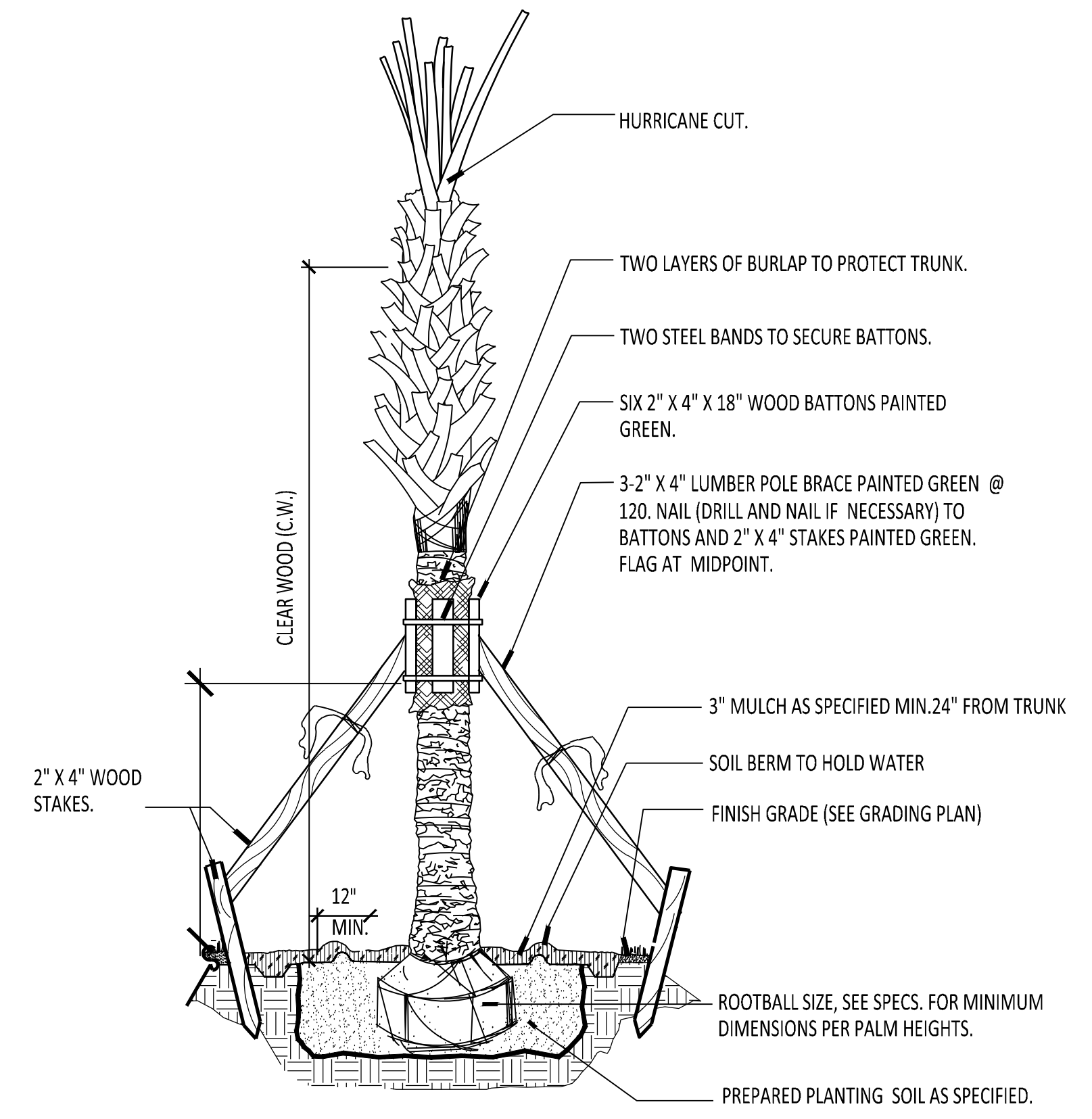
Sheet Title:
PLANTING PLAN



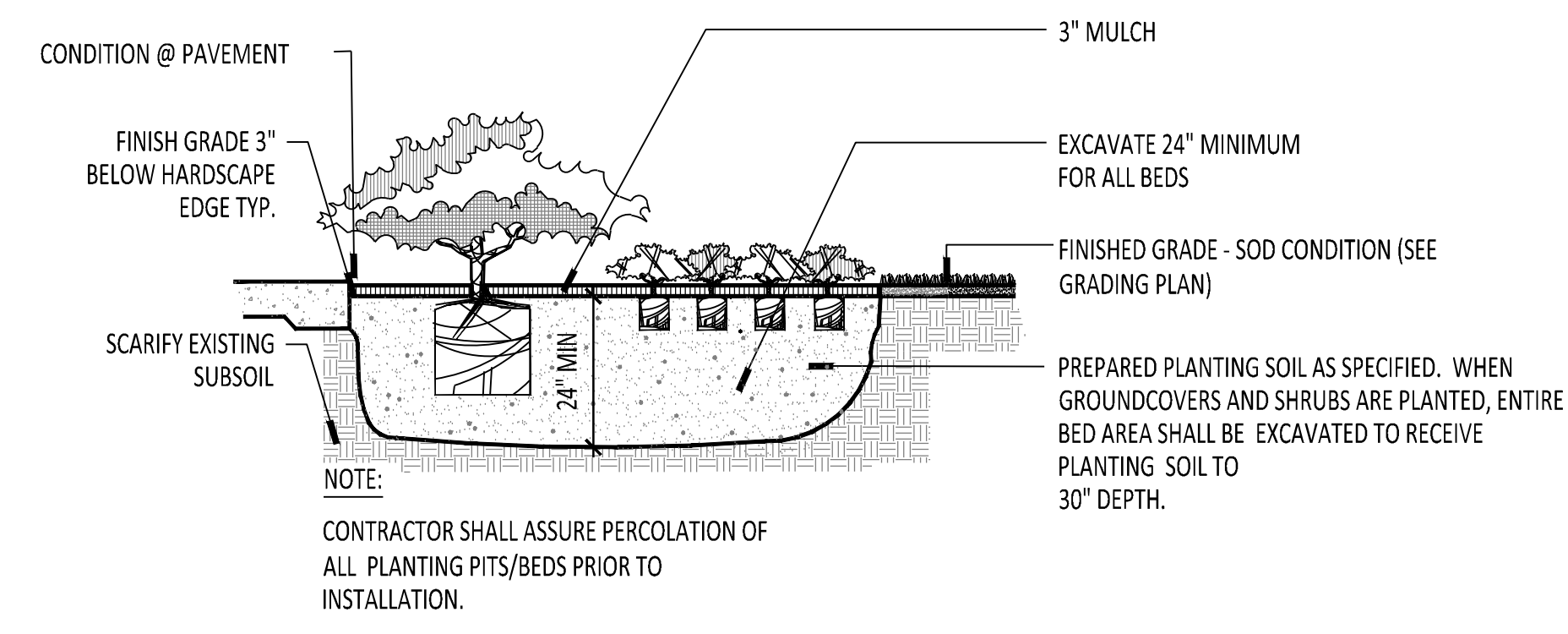
Date: 2015.11.23
 Designed By: EDSA
 Drawn By: EDSA
 Approved By: EDSA
 Project No: 114216



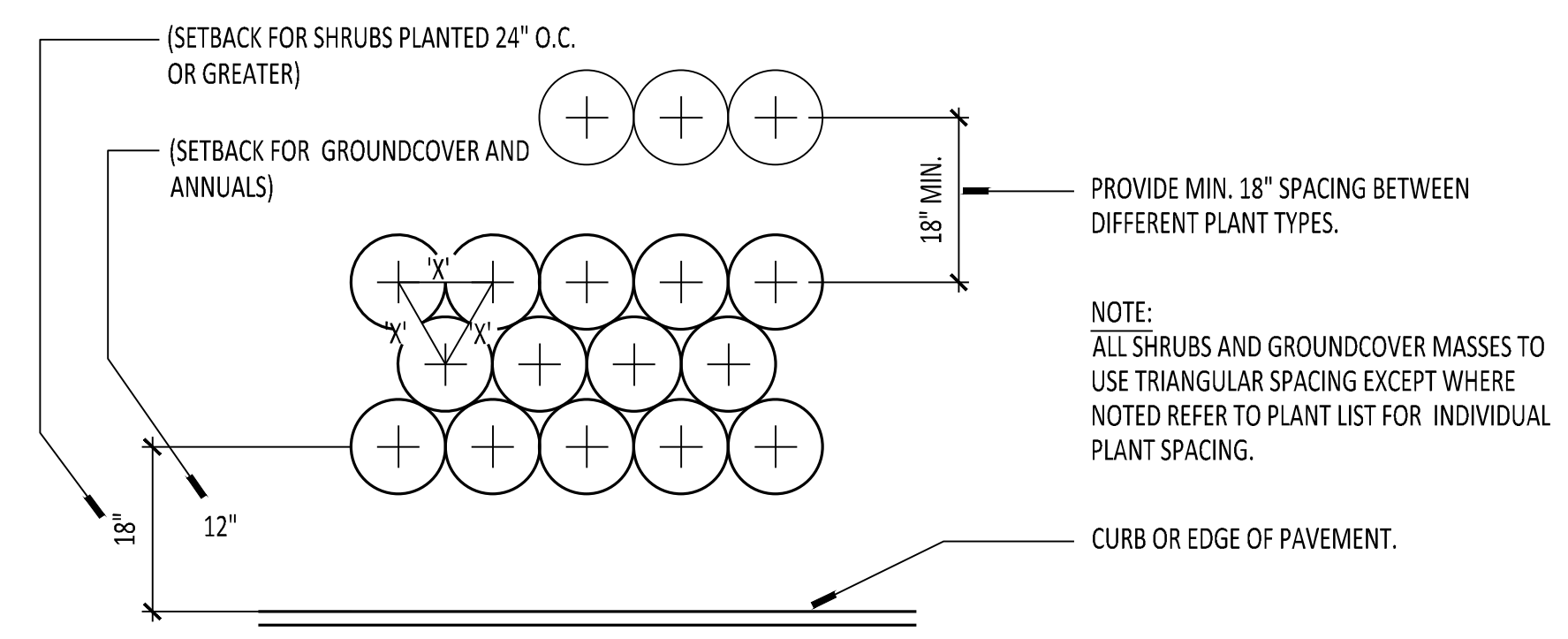
Seal: _____ Sheet Number:
L5.01



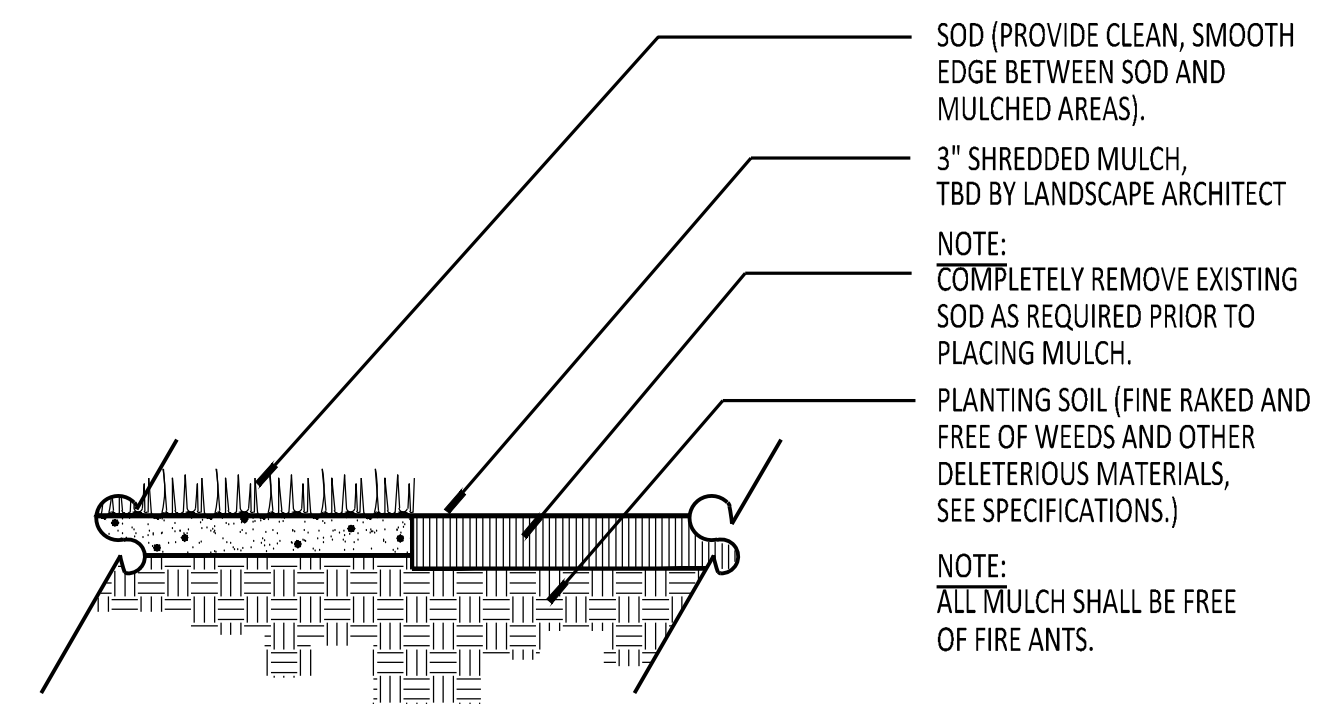
1 SABAL PALM SECTION SCALE: 1/2"= 1'-0"



2 SHRUB AND GROUNDCOVER SECTION SCALE: 1"=1'-0"



3 TYPICAL PLANT SPACING PLAN SCALE: 1"=1'-0"



4 MULCH SECTION SCALE: 1"=1'-0"

Drawing name: G:\Projects\BD\14216 Sawgrass Marriott\2015\EDSA\acc02_CONSTRUCTION DOCUMENTS\CABANA CLUB\14216\5.11-CD-CABANA-PLANTING DETAILS.dwg L5.11 Nov 24, 2015 3:22pm by: afelech

Client:
 Watermark Capital Partners, LLC
 WATERMARK CAPITAL PARTNERS
 272 EAST DEERPATH ROAD, SUITE 230
 LAKE FOREST, IL 60045

Consultants:

Project Name:

**MARRIOTT
RESORT
SAWGRASS
CABANA CLUB**
 619 Ponte Vedra Boulevard
 Ponte Vedra Beach, FL 32082

Site Map:

1512 E. BROWARD BOULEVARD, SUITE 110
 FORT LAUDERDALE, FLORIDA 33301 USA
 TEL: 954.524.3330
 www.edsaplan.com
 LCC000001
 PLANNING • LANDSCAPE ARCHITECTURE • URBAN DESIGN

Rev.	Date	Description	By:

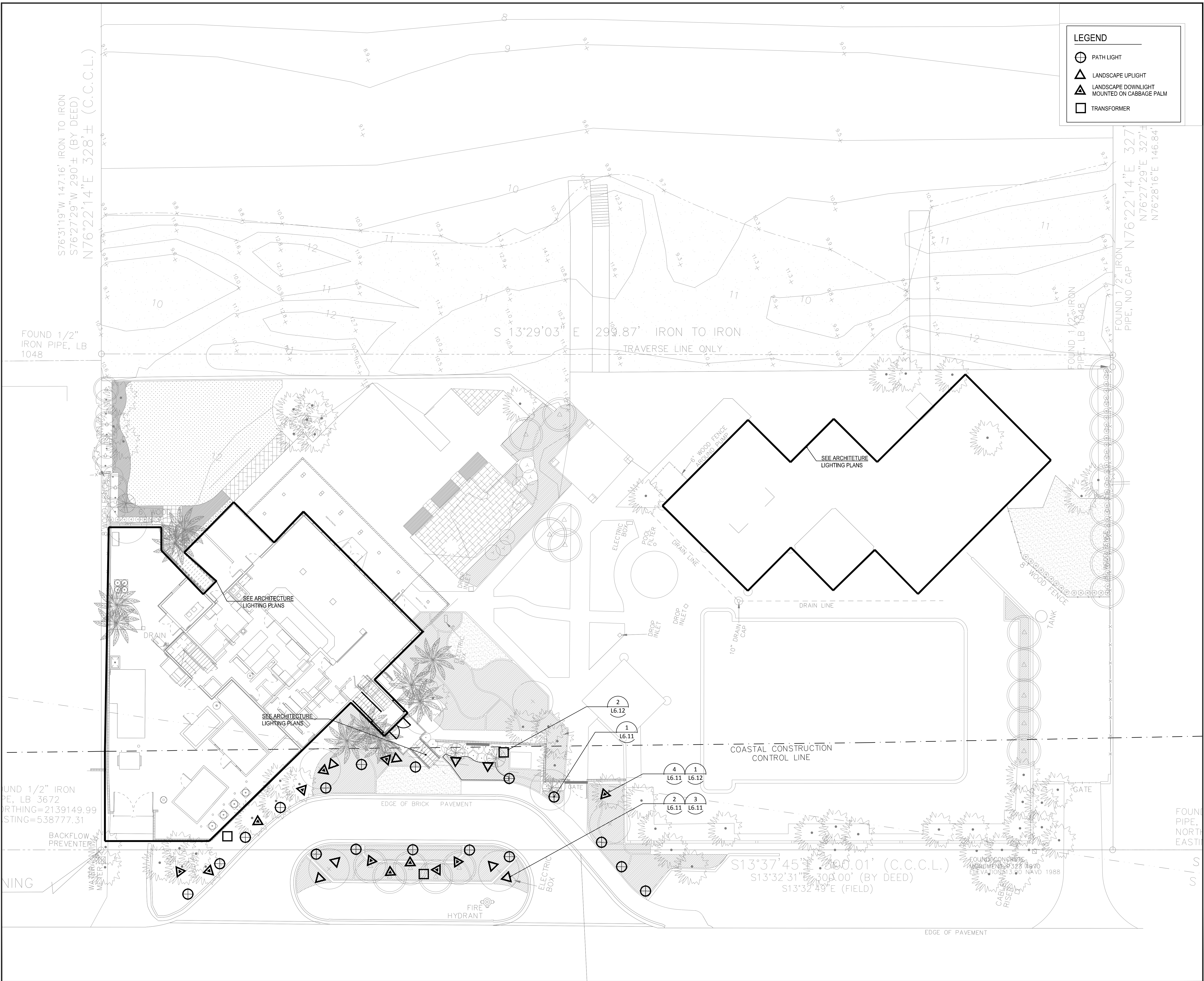
Sheet Title:
LANDSCAPE DETAILS

Date: 2015.11.06
 Designed By: EDSA
 Drawn By: EDSA
 Approved By: EDSA
 Project No: 114216

NORTH

Seal: _____ Sheet Number:
L5.11

Drawing name: G:\Projects\BD\114216 Sawgrass Marriott 20152_EDSA\ac02_CONSTRUCTION DOCUMENTS\CABANA CLUB\114216.L6.01-CD-CABANA-LIGHTING PLAN.dwg L6.01 Jan 07, 2016 7:17pm by: afelech



LEGEND

- PATH LIGHT
- LANDSCAPE UPLIGHT
- LANDSCAPE DOWNLIGHT MOUNTED ON CABBAGE PALM
- TRANSFORMER

Client:
 Watermark Capital Partners, LLC
 WATERMARK CAPITAL PARTNERS
 272 EAST DEERPATH ROAD, SUITE 230
 LAKE FOREST, IL 60045

Consultants:

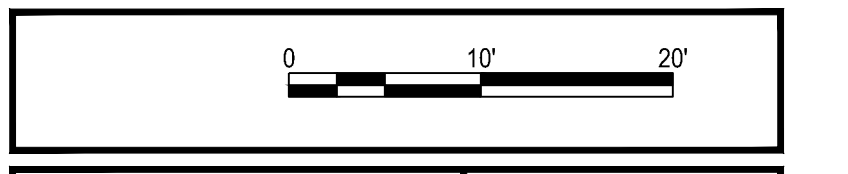
Project Name:
MARRIOTT RESORT SAWGRASS CABANA CLUB
 619 Ponte Vedra Boulevard
 Ponte Vedra Beach, FL 32082

Site Map:

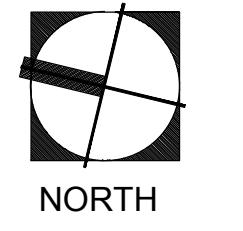
1512 E. BROWARD BOULEVARD, SUITE 110
 FORT LAUDERDALE, FLORIDA 33301 USA
 TEL: 954.524.3330
 www.edsaplan.com
 LCC000001
 PLANNING-LANDSCAPE ARCHITECTURE-URBAN DESIGN

Rev:	Date:	Description:	By:
1			
2			
3			
4			

Sheet Title:
LANDSCAPE LIGHTING PLAN



Date: 2015.11.23
 Designed By: EDSA
 Drawn By: EDSA
 Approved By: EDSA
 Project No: 114216



Seal: _____ Sheet Number:
L6.01

Drawing name: G:\Projects\BDI\14216_Sawgrass_Memorial_201502_EDS\doc02_CONSTRUCTION_DOCUMENTS\CABANA CLUB\14216-L6.11-CD-CABANA-LIGHTING-DETAILS.dwg L6.11 Nov 24, 2015 4:33pm by: almech

PRODUCT SPECIFICATIONS Project Name _____ Date _____
 Type or Model _____ Qty _____
 Model # _____ Prepared By _____

AMP® Low Voltage Landscape Lighting MagnumPro™ LED Area/Path Light

Product Description

The AMP® MagnumPro™ Area/Path Light has a sleek and organic design. It features our widest hat and reflects the LED light to produce a generous region of illumination. This is our most popular style.

The solid cast brass construction features an Antique Bronze finish that becomes more beautiful as it ages. This fixture will never bend or break.

As with all AMP® path lights, the light source is an integrated LED module that projects onto the underside of the solid cast brass hat. This produces a wide beam of glare-free light with even distribution and soft edges.

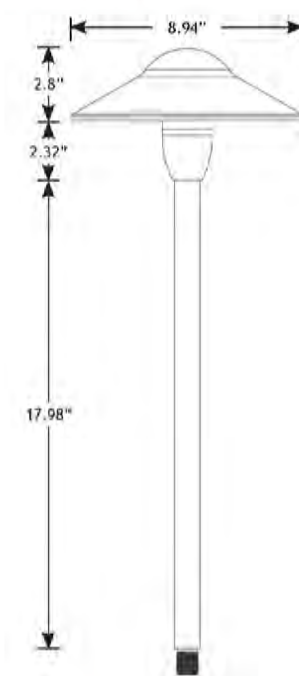
An ideal fixture to illuminate pathways, driveways, steps, stairs, and landscape regions such as gardens, patios, and docks.



Features & Benefits

- Solid cast brass construction
- Pre-aged finish; no powder coating, paint or finish to wear off or peel - just natural patina that does not corrode
- Stem is 1/2 inch thick and includes extra-long (1-inch) strip resistant threading for greater stability
- Ceramic white paint under shade for maximum light reflection
- Integrated light source
 - made with USA-made Cree® LED's
- Silicone plug at lead wire exit prevents ground moisture and insects from entering luminaire through stem

Product Dimensions



Specifications subject to change without notice.
 ©Copyright 2015, AMP® Lighting, Lutz FL 33549 - All rights reserved.

AMP® Low Voltage Landscape Lighting MagnumPro™ LED Area/Path Light

Specifications

- Construction: Cast Brass Stem & Shade
- Finish: Antique Bronze
- Lead Wire: 25' 16AWG, SP12 premium tinned wire
- Mounting: 10 inch hammer stake with cutout for wire exit
- Light Source: Integrated LED
- Lens: clear, flat glass
- Color Temperature: 2700K
- Color Rendering Index: 80+
- Life: 60,000 hours L70
- Operating Voltage Range: 8-15V
- Watts (W): 3.7
- Lumens (lm): 88
- Amps (A): 0.4
- Power Factor (PF): 0.69
- Volt Amps (VA): 5.4
- Powered by: AMP® Low Voltage Transformers

Dimming

Non-Dimmable

Warranty

Unconditional Lifetime Warranty

Certifications



Light Spread

Overall Height	Light Spread (diameter)
No Riser	12 Feet
6" Riser	14 Feet
12" Riser	20 Feet
24" Riser	24 Feet

Ordering Information

Example: Order # AAR-3309-L-BZ

AAR	-3309	-L	-BZ
Family	Shape	Wire Length	Finish
AAR = AMP® Path and Area Light	3309 = MagnumPro™ LED Area/Path Light	L = 25'	BZ = Antique Bronze

Specifications subject to change without notice.
 ©Copyright 2015, AMP® Lighting, Lutz FL 33549 - All rights reserved. 33-008-3309-ver1.pdf

AAR - 3309 - L - BZ

1 PATHWAY LIGHT

SCALE - NTS



SPECIFICATION SHEET

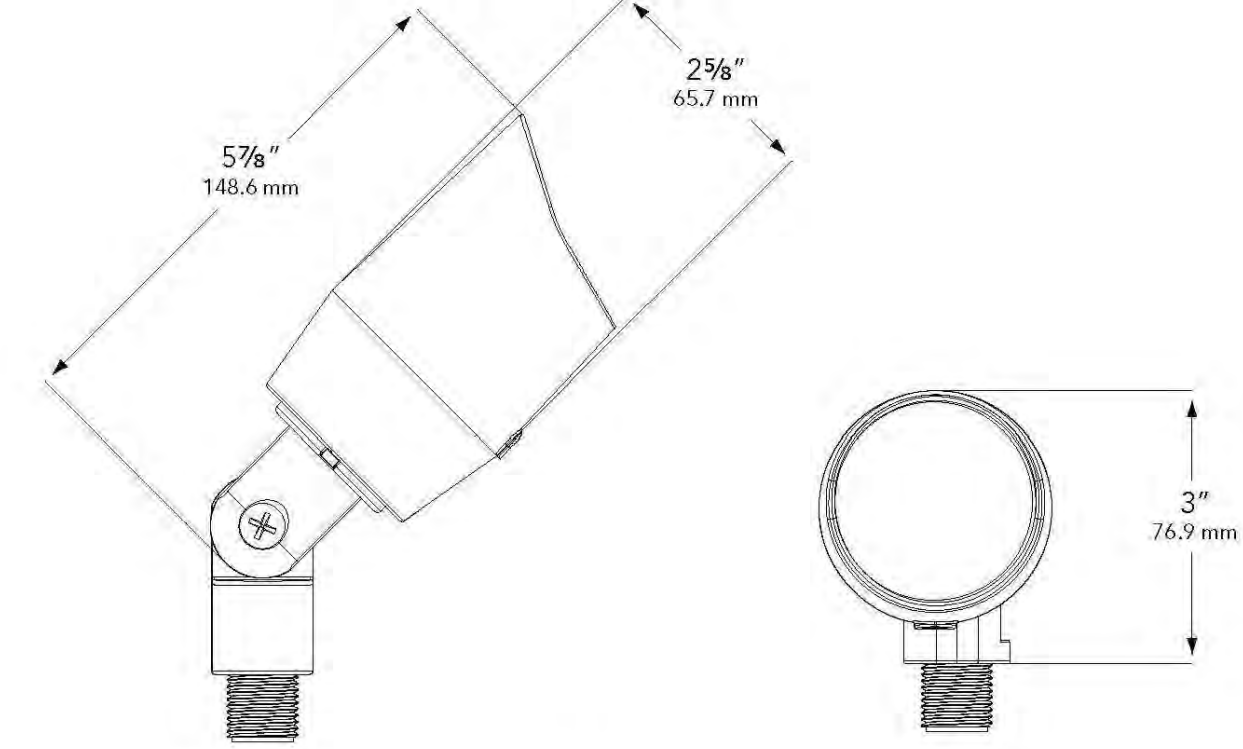
MODEL 5006 Landscape Series • Up & Accent Lights

FIXTURE SPECIFICATIONS:

HOUSING: Die-cast, copper-free aluminum fitted to housing with a silicone O-ring gasket - providing a superior weather-tight seal.
SHROUD: Die-cast, copper-free aluminum fitted to housing with a silicone O-ring gasket - providing a superior weather-tight seal. Does not disengage to shed water from the lens surface.
FINISH: Polyester powder-coat finish available in Black, Verde, Architectural Brick, Architectural Bronze, Light Bronze, Dark Bronze, Granite, Pewter, Terracotta, Rust, Hunter Green, Mocha, Weathered Bronze, Weathered Iron, and White.
LENS: Clear tempered, shock and heat-resistant, soda-lime glass lens.
LAMP TYPE: MR-16 LED Lamp Only - 30° Flood, 4.5W is standard.
OPTICS: Available in 25° Spot, 36° Flood, or 60° Wide Flood distributions.
MOUNTING: Injection-molded composite adjustable knuckle with 1/2" NPS stem. Fixture may be mounted into threaded hubs in junction boxes, ground stakes (GS), tree mount boxes (TB), or mounting canopies (WC).

FASTENERS: All fasteners are stainless steel.
WIRING: Provided with a 36" pigtail of 18-2 direct-burial cable and underground connectors for a secure connection to supply cable.
 All Vista luminaires are MADE IN U.S.A.

DIMENSIONS:



Vista Professional Outdoor Lighting reserves the right to modify the design and/or construction of the fixture shown without further notification.
 1625 Suringer Avenue • San Valley, CA 95042 • (925) 527-0997 • (800) 766-9374 (8478)
 FAX: (925) 570-9374 (8476) • email@vistalighting.com • www.vistalighting.com



SPECIFICATION SHEET

MODEL 5006 Landscape Series • Up & Accent Lights

FIXTURE ORDERING INFORMATION

TO ORDER FIXTURE: Select appropriate choice from each column as in the following example.

EXAMPLE: GR-5006-B-4.5-W-25-SL

MOUNTING	MODEL	FINISH	WATTAGE	COLOR TEMP	DISTRIBUTION	ACCESSORIES
GR- ABS ground stake	5006	B- Black	4.5	W- Warm	25- 25° Spot	FR- Frosted Lens
WB- Wall-mount canopy		G- Verde	5.5		36- 36° Flood	BL- Flat Cool Blue Lens
TR- Tree-mount junction box		BR- Architectural Brick			60- 60° Wide Flood	SL- Flat Spread Lens
		Z- Architectural Bronze				DBL- Flat Dark Blue Lens
		LZ- Light Bronze				GL- Flat Dark Green Lens
		DZ- Dark Bronze				RL- Flat Red Lens
		GT- Granite				WL- Flat Amber Lens
		P- Pewter				HL- Honeycomb Louver
		TC- Terracotta				
		R- Rust				
		HG- Hunter Green				
		M- Mocha				
		WB- Weathered Bronze				
		WI- Weathered Iron				
		W- White				

Fixtures shipped with standard lamp, unless otherwise specified.
 Fixtures shipped with specified mounting hardware.

Vista Professional Outdoor Lighting reserves the right to modify the design and/or construction of the fixture shown without further notification.
 1625 Suringer Avenue • San Valley, CA 95042 • (925) 527-0997 • (800) 766-9374 (8478)
 FAX: (925) 570-9374 (8476) • email@vistalighting.com • www.vistalighting.com

GR - 5006 - B - 5.5 - W - 60

2 LANDSCAPE UPLIGHT

SCALE - NTS



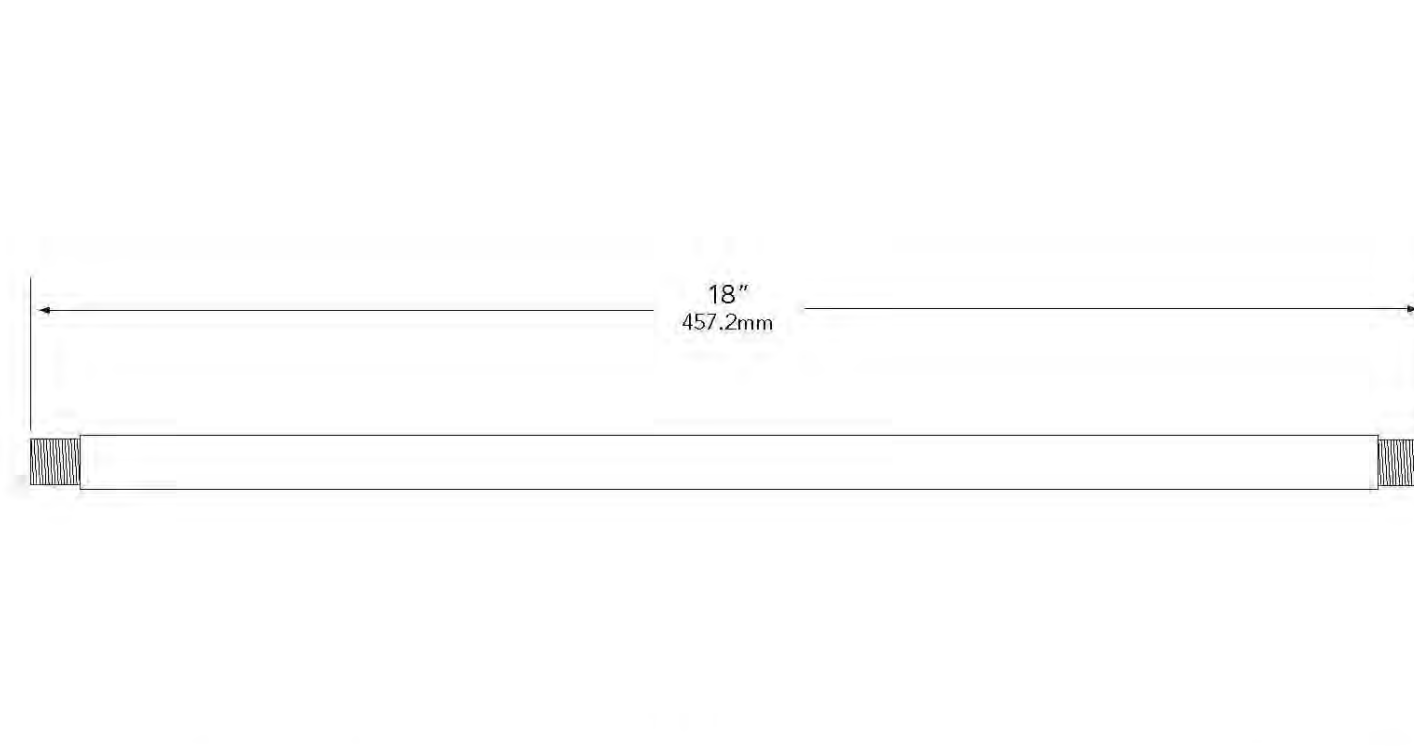
SPECIFICATION SHEET

MODEL AS-118 Landscape Series • Accessories • Mounting Stem

SPECIFICATIONS:

CONSTRUCTION: 1/2" schedule 40 aluminum pipe with 1/2" NPT on both ends.
FINISH: Polyester powder-coat finish available in Black, Verde, Architectural Brick, Architectural Bronze, Light Bronze, Dark Bronze, Granite, Pewter, Terracotta, Rust, Hunter Green, Mocha, Weathered Bronze, Weathered Iron, and White.
 All Vista accessories are MADE IN U.S.A.

DIMENSIONS:



Vista Professional Outdoor Lighting reserves the right to modify the design and/or construction of the fixture shown without further notification.
 1625 Suringer Avenue • San Valley, CA 95042 • (925) 527-0997 • (800) 766-9374 (8478)
 FAX: (925) 570-9374 (8476) • email@vistalighting.com • www.vistalighting.com



SPECIFICATION SHEET

MODEL AS-118 Landscape Series • Accessories • Mounting Stem

ORDERING INFORMATION

TO ORDER FIXTURE: Select appropriate choice from each column as in the following example.

EXAMPLE: AS-118-B

MODEL	FINISH
AS-118	B- Black
	G- Verde
	BR- Architectural Brick
	Z- Architectural Bronze
	LZ- Light Bronze
	DZ- Dark Bronze
	GT- Granite
	P- Pewter
	TC- Terracotta
	R- Rust
	HG- Hunter Green
	M- Mocha
	WB- Weathered Bronze
	WI- Weathered Iron
	W- White

Vista Professional Outdoor Lighting reserves the right to modify the design and/or construction of the fixture shown without further notification.
 1625 Suringer Avenue • San Valley, CA 95042 • (925) 527-0997 • (800) 766-9374 (8478)
 FAX: (925) 570-9374 (8476) • email@vistalighting.com • www.vistalighting.com

AS-118 - B

3 LANDSCAPE UPLIGHT MOUNTING STEM

SCALE - NTS



SPECIFICATION SHEET

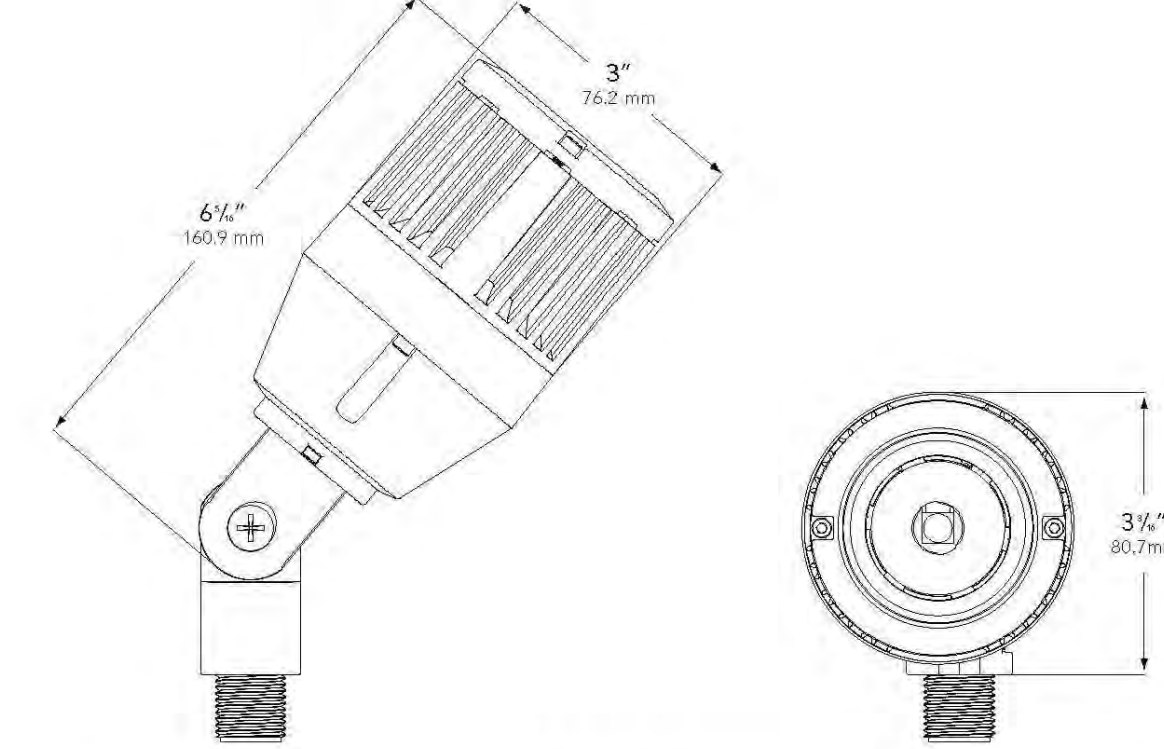
MODEL 3105 Landscape Series • Up & Accent Lights

FIXTURE SPECIFICATIONS:

HOUSING: Die-cast, copper-free aluminum.
SHROUD: Die-cast, copper-free aluminum fitted to housing with a silicon O-ring gasket - providing a superior weather-tight seal. Does not disengage to shed water from the lens surface.
FINISH: Polyester powder-coat finish available in Black, Verde, Architectural Brick, Architectural Bronze, Light Bronze, Dark Bronze, Granite, Pewter, Terracotta, Rust, Hunter Green, Mocha, Weathered Bronze, Weathered Iron, and White.
LENS: Clear, tempered, shock and heat-resistant, soda-lime glass lens.
LAMP TYPE: LED Lamp Only - Cree® MT-G2 High Density Array (HDA) driven at 4.5-watts, 9.5-watts, or 13-watts. Color temperature available in W- Warm (2700K), N- Neutral (4000K), C- Cool (5000K).
OPTICS: Available in WFS - Very Narrow Spot, SP - Spot, MF - Medium Flood, or WF - Wide Flood.

MOUNTING: Injection-molded composite adjustable knuckle with 1/2" NPS thread. Fixture may be mounted into threaded hubs in junction boxes, ground stakes (GS), tree mount boxes (TB), or mounting canopies (WC).
FASTENERS: All fasteners are stainless steel.
WIRING: Provided with a 36" pigtail of 18-2 direct-burial cable and underground connectors for a secure connection to supply cable.
 All Vista luminaires are MADE IN U.S.A.

DIMENSIONS:



Vista Professional Outdoor Lighting reserves the right to modify the design and/or construction of the fixture shown without further notification.
 1625 Suringer Avenue • San Valley, CA 95042 • (925) 527-0997 • (800) 766-9374 (8478)
 FAX: (925) 570-9374 (8476) • email@vistalighting.com • www.vistalighting.com



SPECIFICATION SHEET

MODEL 3105 Landscape Series • Up & Accent Lights

FIXTURE ORDERING INFORMATION

TO ORDER FIXTURE: Select appropriate choice from each column as in the following example.

EXAMPLE: GR-3105-B-4.5-W-SP

MOUNTING	MODEL	FINISH	WATTAGE	COLOR TEMP	DISTRIBUTION	ACCESSORIES
GR- ABS ground stake	3105	B- Black	4.5	W- Warm	WFS - Very Narrow Spot	BD - Barn Doors
WB- Wall-mount canopy		G- Verde	9.5	N- Neutral	SP - Spot	FS - Full Shield
TR- Tree-mount J-box		BR- Architectural Brick	13	C- Cool	MF - Medium Flood	HS - Half Shield
		Z- Architectural Bronze			WF - Wide Flood	HL - Honeycomb Louver
		LZ- Light Bronze				
		DZ- Dark Bronze				
		GT- Granite				
		P- Pewter				
		TC- Terracotta				
		R- Rust				
		HG- Hunter Green				
		M- Mocha				
		WB- Weathered Bronze				
		WI- Weathered Iron				
		W- White				

Fixtures shipped with standard lamp, unless otherwise specified.
 Fixtures shipped with specified mounting hardware.

Vista Professional Outdoor Lighting reserves the right to modify the design and/or construction of the fixture shown without further notification.
 1625 Suringer Avenue • San Valley, CA 95042 • (925) 527-0997 • (800) 766-9374 (8478)
 FAX: (925) 570-9374 (8476) • email@vistalighting.com • www.vistalighting.com

TR - 3105 - B - 9.5 - W - WF - HS

4 TREE / PALM MOUNTED DOWNLIGHT

SCALE - NTS

Client:
 Watermark Capital Partners, LLC

WATERMARK CAPITAL PARTNERS
 272 EAST DEERPATH ROAD, SUITE 230
 LAKE FOREST, IL 60045

Consultants:

Project Name:



Site Map:

EDSA
 1512 E. BROWARD BOULEVARD, SUITE 110
 FORT LAUDERDALE, FLORIDA 33301 USA
 TEL: 954.524.3330
 www.edsaplan.com
 LCC000001
 PLANNING • LANDSCAPE ARCHITECTURE • URBAN DESIGN

Rev.	Date	Description	By
1			
2			
3			
4			
5			
6			
7			
8			
9			
10			

Sheet Title:
LIGHTING DETAILS

Date: 2015.11.23
 Designed By: EDSA
 Drawn By: EDSA
 Approved By: EDSA
 Project No: 114216



Scale: Sheet Number:
L6.11

Drawing name: G:\Projects\BDI\114216_Sawgrass_Memorial_201502_EDS\doc02_CONSTRUCTION_DOCUMENTS\CABANA CLUB\114216-L6.12-CD-CABANA-LIGHTING-DETAILS.dwg L6.12 Nov 24, 2015 4:23 pm by: alfmeech

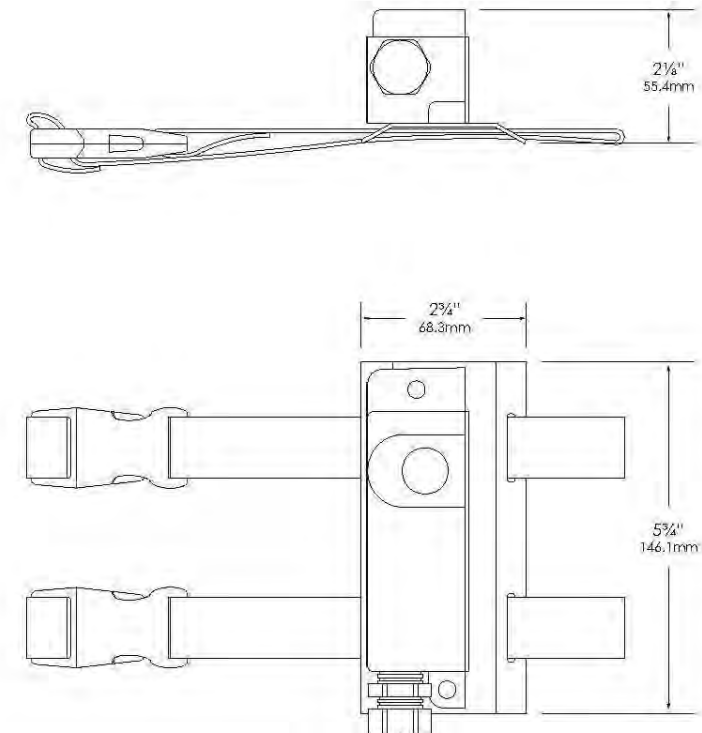


Type: _____
Model: _____
Project: _____

MODEL: TMS-150 - 12-Volt Tree Mount Junction Box with Adjustable Straps
SPECIFICATIONS:

HOUSING: Die-cast, copper-free aluminum with 1/2" FPT for future mounting.
STRAPS: UV-stable quick-latching adjustable straps. Available in 12", 24", 36", and 48" lengths.
FINISH: Powder-coat finish available in Black, Verde, Architectural Brick, Architectural Bronze, Light Bronze, Dark Bronze, Granite, Pewter, Terra-cotta, Rust, Hunter Green, Mocho, Weathered Bronze, Weathered Iron, and White.
All Vista accessories are **MADE IN THE U.S.A.**

DIMENSIONS:



Vista Professional Outdoor Lighting reserves the right to modify the design and/or construction of the fixture shown without further notification.
1625 Surveyor Avenue • Sire Valley, CA 92043 • (805) 527-0987 • (800) 766-VISTA (8478)
FAX: (888) 470-VISTA (8478) • email@vistapro.com • www.vistapro.com



SPECIFICATION SHEET

MODEL: TMS-150 - 12-Volt Tree Mount Junction Box with Adjustable Straps
ORDERING INFORMATION

TO ORDER: Select appropriate choice from each column as in the following example.
EXAMPLE: TMS-150-B

MODEL	FINISH
TMS-150	B - Black
	G - Verde
	BR - Architectural Brick
	Z - Architectural Bronze
	LZ - Light Bronze
	DB - Dark Bronze
	GT - Granite
	P - Pewter
	TC - Terra-cotta
	R - Rust
	HG - Hunter Green
	M - Mocho
WB - Weathered Bronze	
WI - Weathered Iron	
W - White	

Vista Professional Outdoor Lighting reserves the right to modify the design and/or construction of the fixture shown without further notification.
1625 Surveyor Avenue • Sire Valley, CA 92043 • (805) 527-0987 • (800) 766-VISTA (8478)
FAX: (888) 470-VISTA (8478) • email@vistapro.com • www.vistapro.com

TMS - 150 - B

1 DOWNLIGHT PALM STRAP MOUNT J BOX
SCALE - NTS

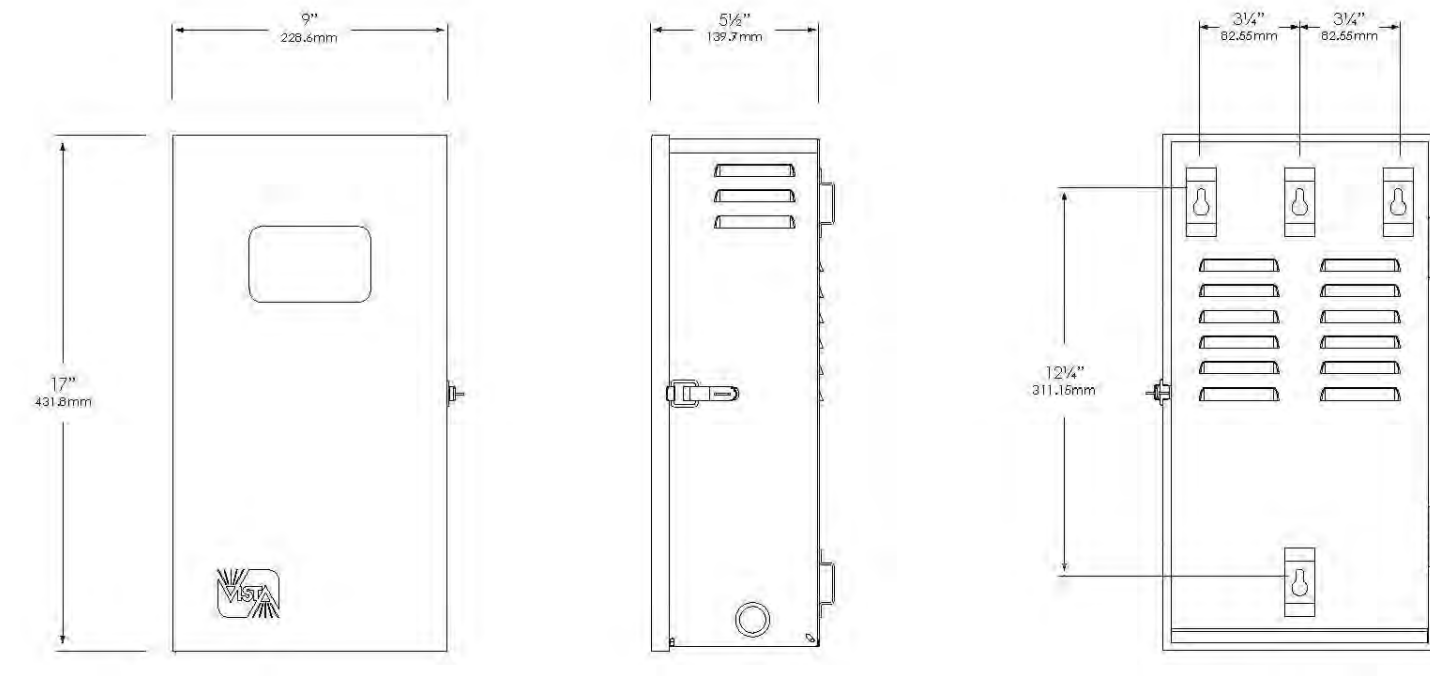


Type: _____
Model: _____
Project: _____

HP SERIES - Stainless Steel Transformer
SPECIFICATIONS:

EXTERIOR CONSTRUCTION: 20-gauge polished, top-grade domestic, 304 stainless steel.
FINISH: Polished stainless steel with bromine-free clear powder-coat.
TRANSFORMER CHARACTERISTICS: Available Power Ratings: 300, 400, 900, and 1200 Watts.
Primary Voltage: 120 Volts (Also available in 240V, 30 or 60 cycle-Special order only.)
Secondary Voltage: 12, 13, 14, 15, 16, 17, 19, and 22 Volts.
Fully grounded and isolated with encapsulated core coil.
PRIMARY PROTECTION: Auto thermal shutoff.
SECONDARY PROTECTION: Resettable high performance magnetic circuit breaker.
TERMINALS: Extra-large terminal strip for multiple low voltage cable connections as well as extended wire leads for alternative wiring techniques. Extended wire leads are color coated for easy identification of voltage taps. A separate 120-volt terminal strip for easy hand-wiring and an accessory terminal strip for easy installation of external switching devices also included.

DIMENSIONS:



Vista Professional Outdoor Lighting reserves the right to modify the design and/or construction of the fixture shown without further notification.
1625 Surveyor Avenue • Sire Valley, CA 92043 • (805) 527-0987 • (800) 766-VISTA (8478)
FAX: (888) 470-VISTA (8478) • email@vistapro.com • www.vistapro.com



SPECIFICATION SHEET

HP SERIES - Stainless Steel Transformer
TRANSFORMER ORDERING INFORMATION

TO ORDER Transformer: Select appropriate choice from each column as in the following example.
EXAMPLE: HP-300-RP-C

TRANSFORMER SERIES	TRANSFORMER MODEL	ACCESSORY OPTIONS	FINISH
HP - High Power, Stainless Steel 12V Transformer	300- 300 VA 400- 400 VA (300 W x 2) 900- 900 VA (300 W x 3) 1200- 1200 VA (300 W x 4)	T- Removable multi-setting mechanical 24-hour timer DT- Removable multi-setting digital 7-day timer RP- Remote wired photocell with electronic timer (Accessories not required for operation of transformer)	C- Bromine-free clear powder-coat B- Black G- Verde BR- Architectural Brick Z- Architectural Bronze GT- Granite P- Pewter TC- Terra-cotta R- Rust HG- Hunter Green M- Mocho WB- Weathered Bronze WI- Weathered Iron W- White

- Notes:** When a finish is not specified, HP transformers will be shipped with a clear, polyester, powder-coated finish.
- FEATURES:**
- Stainless steel, custom-designed, weather-tight casing seals components from moisture and debris. Vista's Strudge-Free clear powder-coat ensures a like-brand-new look for years to come.
 - Take-apart stainless steel hinges for easy door removal allowing greater access during installation.
 - Water-resistant weather-stripping around door seal.
 - Easy to read instructions mounted inside door.
 - Magnetic overload circuit breaker for reliable automatic circuit protection under all conditions. The circuit breaker rocker switch may also be used for manual on/off switching of the unit.
 - Over-sized wiring compartment makes cable installation easy.
 - 1/2" knockouts on each side of enclosure for conduit and accessory mounting as well as a removable, swing-down enclosure bottom with Adjustable Cable Raceway feeder and multiple 3/8" and 1/2" knockouts.
 - Extra-large terminal strip for multiple low voltage cable connections as well as extended wire leads for alternative wiring techniques. Extended wire leads are color coated for easy identification of voltage taps.
 - Separate accessory terminal strip for easy installation of optional photo-cell, motion sensor, or other external switching devices.
 - 6-foot, heavy-gauge, grounded, water-resistant power cord with integrally molded plug.
 - 120-volt accessory receptacle for use with optional, removable, multi-setting mechanical 24-hour timer or electronic/digital 7-day timer (with battery back-up).
 - Lockable, stainless-steel latch can be secured to prevent tampering.
 - Discrete forward vents in the rear and sides of the cabinet maintain a cool operating temperature.
 - 120-volt terminal strip for easy hand-wiring.
 - Optional photocell is available for use with timers or stand-alone.
 - Electronic timer and remote photocell combination standard in RP models.
 - Mounting templates included.
 - Also available in 240V, 30 or 60 cycle- Special order only.

Vista Professional Outdoor Lighting reserves the right to modify the design and/or construction of the fixture shown without further notification.
1625 Surveyor Avenue • Sire Valley, CA 92043 • (805) 527-0987 • (800) 766-VISTA (8478)
FAX: (888) 470-VISTA (8478) • email@vistapro.com • www.vistapro.com

HP - 300 - RP - B

2 TRANSFORMER
SCALE - NTS

Client:



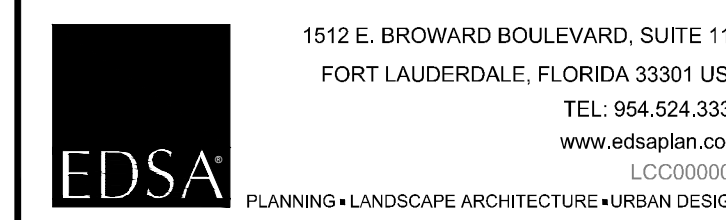
WATERMARK CAPITAL PARTNERS
272 EAST DEERPATH ROAD, SUITE 230
LAKE FOREST, IL 60045

Consultants:

Project Name:



Site Map:



Rev.	Date	Description	By:
1			
2			
3			
4			
5			
6			
7			
8			
9			
10			

Sheet Title:
LIGHTING DETAILS

Date: 2015.11.23
Designed By: EDSA
Drawn By: EDSA
Approved By: EDSA
Project No: 114216



NORTH

Seal: _____ Sheet Number: _____

L6.12