

ESPASIO DESIGN CORP.

6303 Blue Lagoon Drive
 Suite 400
 Miami, Florida 33126
 Tel. 305.537.4234
 www.espaziodesign.com
 AA26002938

**GARDEN SUITES HOTEL
 (BOUTIQUE HOTEL CONVERSION)**

3900 & 3920 GARDEN AVENUE
 MIAMI BEACH, FL 33140
 Project No. 214.02

PREPARED FOR:
 VERTICAL ACCESSIBILITY WAIVER

OWNERS:
 AFRICUS LLC
 P.O. BOX 191862
 MIAMI BEACH, FL 33119

No. DATE REVISION

DRAWN APPROVED
 AC AC
 DATE SCALE:
 02-29-16 AS SHOWN

CONSULTANTS:

SEAL/SIGNATURE

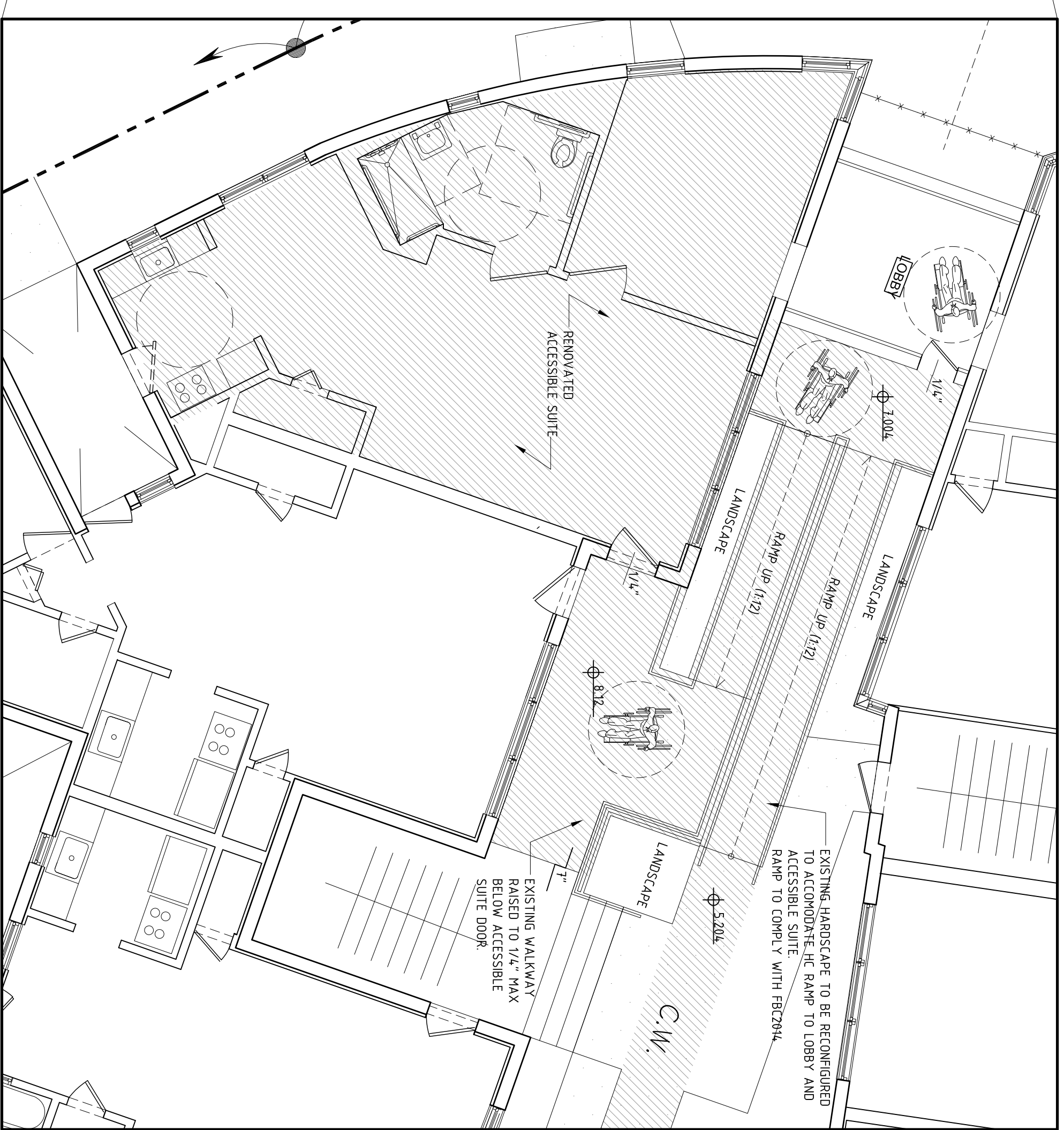
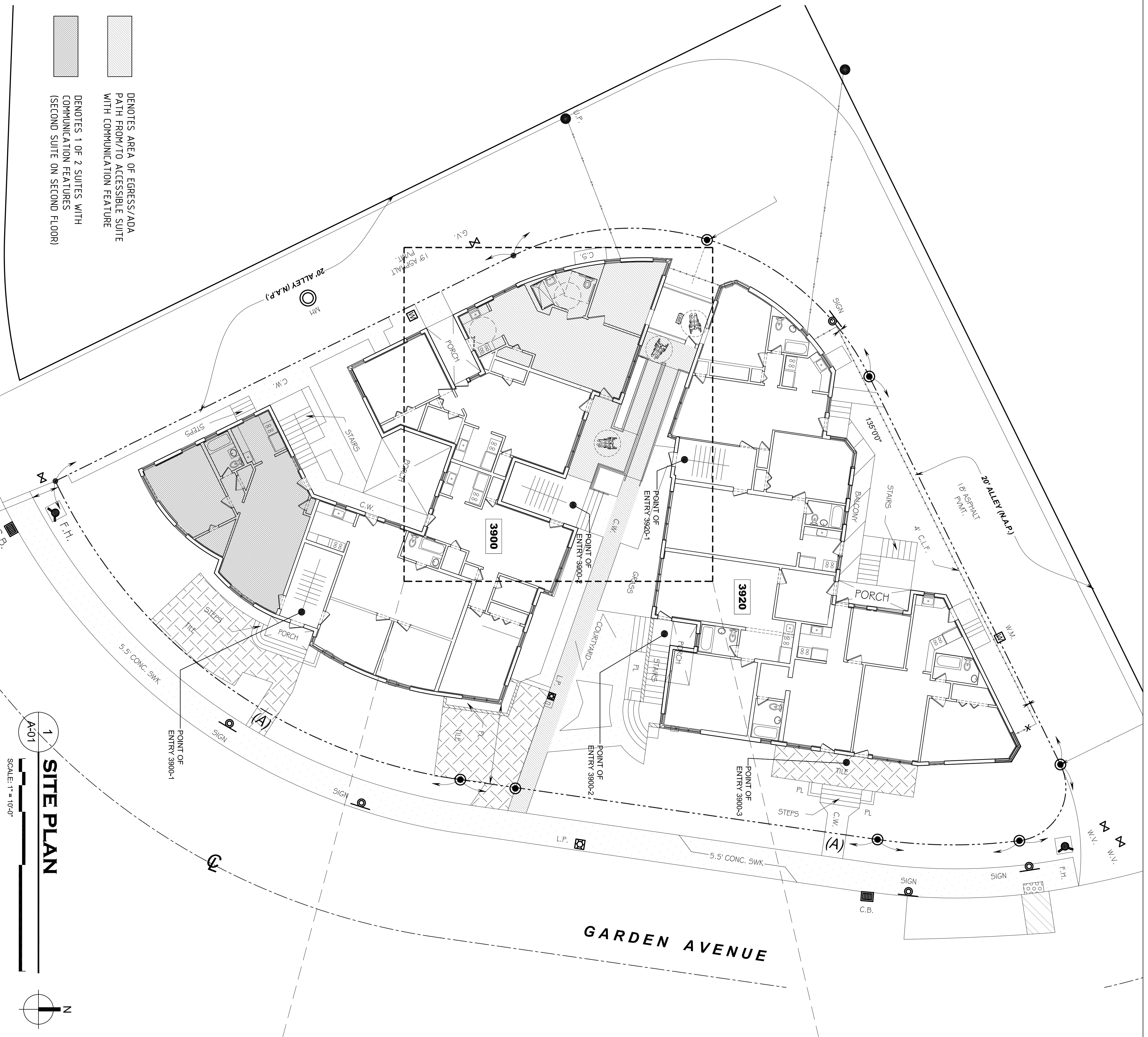
N. ALEXANDRA CARDENAS-BARRERO,
 R.A. LEED AP
 AR 0094540

The drawings are the property of
 ESPASIO Design Corp. and is
 not to be reproduced or
 copied in whole or in part
 without the written consent of
 project and to be returned
 on request.
 COPYRIGHT © 2016

SHEET TITLE
 SITE PLAN

SHEET NUMBER

A-01



MOBILITY/COMMUNICATION FEATURE ANALYSIS			
	REQUIRED	EXISTING CONDITION	PROPOSED
GUEST ROOMS WITH MOBILITY FEATURES PER FB2014 ACCESSIBILITY TABLE 224.2	1-25 ROOMS = 1 REQUIRED	0 EXISTING	1 PROPOSED
GUEST ROOMS WITH MOBILITY & COMMUNICATION FEATURES PER FB2014 ACCESSIBILITY TABLE 224.5	AT LEAST ONE GUESTROOM REQUIRED TO PROVIDE MOBILITY FEATURES SHALL ALSO PROVIDE COMMUNICATION FEATURES	0 EXISTING	0 EXISTING
GUEST ROOMS WITH COMMUNICATION FEATURES PER FB2014 ACCESSIBILITY TABLE 224.4	2-25 ROOMS = 2 REQUIRED	0 EXISTING	2 PROPOSED

NOTE: 1 MOBILITY & COMMUNICATION ACCESSIBLE SUITE AND 2 SUITES WITH COMMUNICATION FEATURES TO BE DISPERSED AMONG THE VARIOUS CLASSES OF GUESTROOMS PER FB2014 ACCESSIBILITY TABLE 224.5