

WALL TYPES	
MARK	WALL INFORMATION
P	10" CMU WALL, 3/4" THK IKO ENORFOIL INSULATION (R5.1), 7/8" FURRING CHANNEL, 5/8" DRYWALL.
Q	5/8" DRYWALL, 3 5/8" METAL STUD AT 16" O.C., 1 1/2" PIPE CHASE, 3 5/8" METAL STUD AT 16" O.C., 5/8" DRYWALL
R	5/8" DRYWALL, 3 5/8" METAL STUD AT 16" O.C., 1 1/2" PIPE CHASE, 3 5/8" METAL STUD AT 16" O.C., 5/8" DRYWALL
S	5/8" DRYWALL, 3 5/8" METAL STUD AT 16" O.C., 5/8" DRYWALL
S1	IL LINER PANEL, 6" METAL STUD (600-S-125-43MIL) AT 16" O.C., IL LINER PANEL
P1	5/8" DRYWALL, 7/8" FURRING CHANNEL, 10" CMU WALL, 7/8" FURRING CHANNEL, 5/8" DRYWALL.
P2	10" CMU WALL
W	8" STEM WALL
BA	FOR WALL INFORMATION REFER TO DRAWING 1285-1020.
R1	10" CMU WALL, 3/4" THK IKO INSULATION (R5.1), 1 1/2" PIPE CHASE 3 5/8" METAL STUD AT 16" O.C. 5/8" DRYWALL
S2	5/8" TYPE "X" DRYWALL, 3 5/8" METAL STUD AT 16" O.C., BATT INSULATION R13, 3/4" THK IKO ENORFOIL INSULATION (R5.1), 5/8" TYPE "X" DRYWALL.

FIRST FLOOR

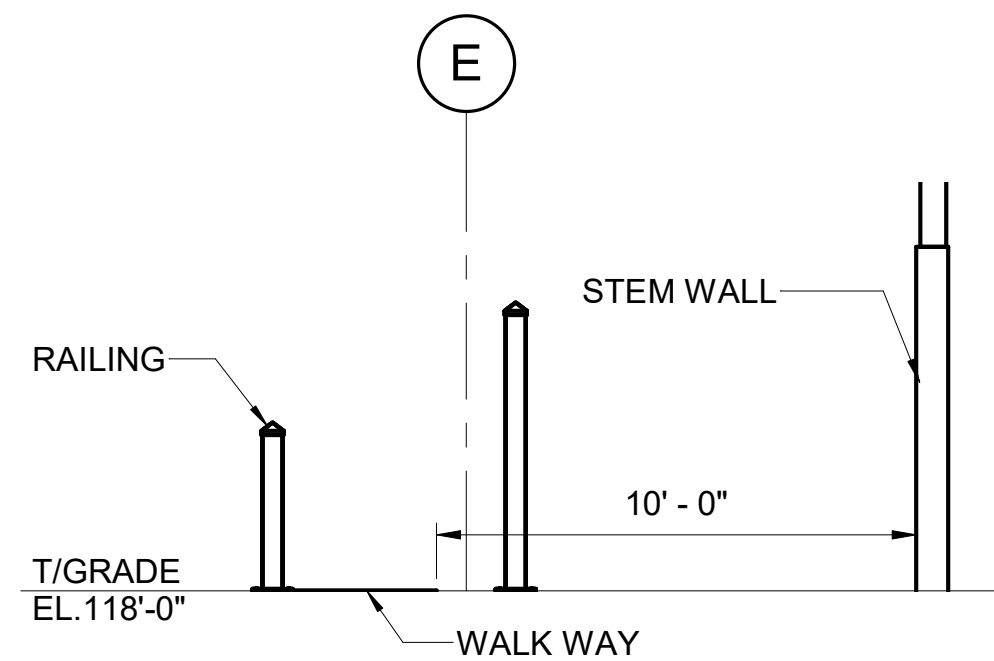
SCALE : 3/32" = 1'-0"
FINISHED FLOOR EL. 118'-0"

LEGENDS

XXX	DOOR NUMBER
XX	WALL CALLOUT
XX	WINDOW CALLOUT

WINDOW SCHEDULE

WINDOW CALLOUT	WINDOW SIZE(W X H)	FIRE RATING
W1	3' - 0" X 3' - 6"	-
W2	5' - 0" X 3' - 6"	-
W3	6' - 0" X 3' - 6"	1 HR.
W4	9' - 0" X 3' - 6"	1 HR.
W5	13' - 0" X 4' - 0"	-
W6	4' - 0" X 3' - 6"	1 HR.
W16	4' - 0" X 6' - 0"	-



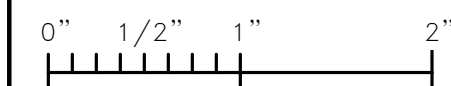
SECTION

SCALE : 1/4" = 1'-0"

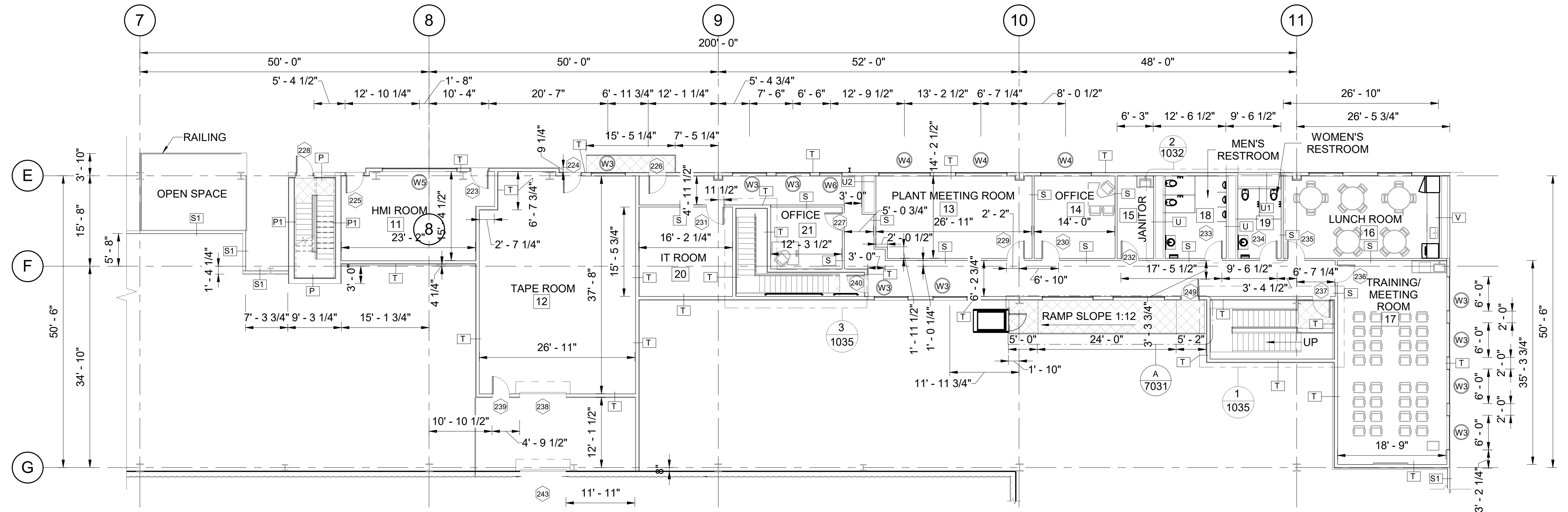
NOTES:

- FOR STRUCTURAL GENERAL NOTES SEE DRAWING 1285-6000, 1285-6002, 1285-6003 AND 1285-6004.
- FOR DOOR SCHEDULE SEE DRAWING 1285-1033.
- SEE DRAWING 1285-1002 FOR PLAN LOCATION.
- CLOUDS WHICH ARE SHOWN IN ORANGE AND NOT MARKED WITH REVISION NUMBERS HIGHLIGHT THE CHANGES IN ASI 2 SET WHICH WERE REVERTED BACK TO PREVIOUS IFC ISSUE.
- ASCENSION CLARITY 16D MODEL SERIES VERTICAL ENCLOSED "CLOSED AT TOP" WHEELCHAIR LIFT OR APPROVED EQUAL. THE LIFT SHALL INCLUDE ALL APPLICABLE OPERATING AND SAFETY DEVICES FOR COMPLIANCE WITH ADA AND FLORIDA BUILDING CODE REQUIREMENTS.

ISSUED FOR CONSTRUCTION



PROFESSIONAL SEAL: DISCLAIMER: THIS DRAWING IS THE SOLE PROPERTY OF IKO INDUSTRIES LTD. (IKO) AND MAY NOT BE COPIED, PUBLISHED OR DISCLOSED BY ANY RECIPIENT THEREOF OR USED FOR ANY PURPOSE OTHER THAN THE SPECIFIC PURPOSE FOR WHICH IT HAS BEEN PROVIDED TO THE RECIPIENT, WITHOUT THE PRIOR WRITTEN CONSENT OF IKO. USE OF THIS DRAWING MAY BE SUBJECT TO OTHER TERMS AND CONDITIONS AS SET OUT IN ANY CONTRACT BETWEEN IKO AND THE RECIPIENT						3	ASI #2	2024/24/05	NVS	DV	SBG	SHEET SIZE: ANSI D	 IKO INDUSTRIES LTD. IKO CLAY HILL PROJECT TITLE: CLAY HILL SHINGLE PLANT TITLE: BUILDING: PLANT OFFICE FLOOR PLAN CONSULTANT: COOPER & ASSOCIATES, LLC Engineers - Project Managers 2200 Ellis Road, New Lenox, Illinois, 60451 Phone: 815-740-0860 www.cooper-engr.com	PROJECT TITLE: CLAY HILL SHINGLE PLANT TITLE: BUILDING: PLANT OFFICE FLOOR PLAN			
						2	ISSUED FOR CONSTRUCTION	2024/12/04	NVS	DV	SBG	DRAWN BY: NNN		CONSULTANT DRAWING#: 1285-1030	PROJECT#: 22027	REV: 5	
						1	ISSUED FOR CONSTRUCTION	2024/13/03	NVS	JCV	SBG	CHECKED BY: DV		OWNER DRAWING#: 22027-CH01-S-DWG-1030	DWG#: 1030		
	5	ASI #12	2024/28/08	NVS	DV	SBG	0	ISSUED FOR CONSTRUCTION	2024/18/01	NNN	JCV	SBG		APPROVED BY: SBG			
	4	ASI-08 PERMIT REISSUE	2024/25/07	SG	DV	SBG	A	ISSUED FOR REVIEW	2024/05/01	NNN	JCV	SBG		APPROVED BY:			
REV.	DESCRIPTION	DATE	DRN.	CHK.	APPR.	REV.	DESCRIPTION	DATE	DRN.	CHK.	APPR.	DATE: 01/03/2024					



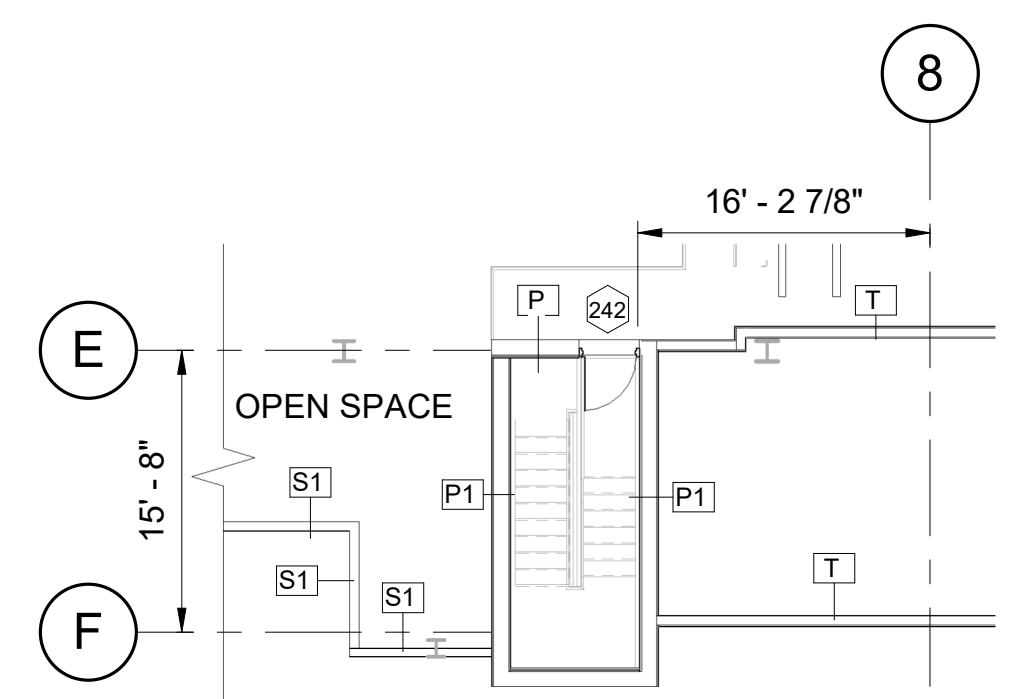
SECOND FLOOR

SCALE : 3/32" = 1'-0"
FINISHED FLOOR EL.134'-0"

WALL TYPES	
MARK	WALL INFORMATION
P	10" CMU WALL, 3/4" THK IKO ENORFOIL INSULATION (R5.1), 7/8" FURRING CHANNEL, 5/8" DRYWALL.
S	5/8" DRYWALL, 3 5/8" METAL STUD AT 16" O.C., 5/8" DRYWALL
T	5/8" TYPE 'X' DRYWALL, 6" METAL STUD (600-S-125-43MIL) AT 12" O.C.,BAT INSULATION R13, 3/4" THK ENORFOIL INSULATION (R5.1), 5/8" TYPE 'X' DRYWALL.
U	5/8" DRYWALL, 3 5/8" METAL STUD AT 16" O.C., 1'-4" PIPE CHASE, 3 5/8" METAL STUD AT 16" O.C., 5/8" DRYWALL
U1	5/8" DRYWALL, 3 5/8" METAL STUD AT 16" O.C., 2'-2" PIPE CHASE, 3 5/8" METAL STUD AT 16" O.C., 5/8" DRYWALL
U2	5/8" DRYWALL, 3 5/8" METAL STUD AT 21" O.C., 2'-2" PIPE CHASE, 3 5/8" METAL STUD AT 16" O.C., 5/8" DRYWALL
V	5/8" TYPE 'X' DRYWALL, 6" METAL STUD (600-S-125-43MIL) AT 12" O.C., 8" PIPE CHASE, 3-5/8" METAL STUD AT 16" O.C., BAT INSULATION (R13), 3/4" THK. IKO ENERFOIL INSULATION (R5.1), 5/8" TYPE 'X' DRYWALL.
P1	5/8" DRYWALL, 7/8" FURRING CHANNEL, 10" CMU WALL, 7/8" FURRING CHANNEL, 5/8" DRYWALL.
S1	IL LINER PANEL, 6" METAL STUD (600-S-125-43MIL) AT 16" O.C., IL LINER PANEL

WINDOW SCHEDULE		
WINDOW CALLOUT	WINDOW SIZE(W X H)	FIRE RATING
W1	3' - 0"X3' - 6"	-
W2	5' - 0"X3' - 6"	-
W3	6' - 0"X3' - 6"	1 HR
W4	9' - 0"X3' - 6"	1 HR
W5	13' - 0"X4' - 0"	-
W6	4' - 0"X3' - 6"	1 HR
W16	4' - 0"X6' - 0"	-

LEGENDS	
XXX	DOOR NUMBER
XX	WALL CALLOUT
XX	WINDOW CALLOUT



PART PLAN

SCALE : 3/32" = 1'-0"
FINISHED FLOOR EL.144'-5"

NOTES:

- FOR STRUCTURAL GENERAL NOTES SEE DRAWING 1285-6000, 1285-6002, 1285-6003 AND 1285-6004.
- FOR DOOR SCHEDULE SEE DRAWING 1285-1033.
- SEE DRAWING 1285-1003 FOR PLAN LOCATION.
- PROVIDE SPRAY FOAM INSULATION HAVING MINIMUM R VALUE OF 6.3 FOR FLOOR OF HMI AND TAPE ROOM. PROVIDE AN APPROVED THERMAL BARRIER OF 1/2" (12.7MM) GYPSUM WALLBOARD DROPPED CEILING TO PROTECT SPRAY FOAM UNDER HMI AND TAPE ROOM.
- CLOUDS WHICH ARE SHOWN IN ORANGE AND NOT MARKED WITH REVISION NUMBERS HIGHLIGHT THE CHANGES IN ASI 2 SET WHICH WERE REVERTED BACK TO PREVIOUS IFC ISSUE .

ISSUED FOR CONSTRUCTION



PROFESSIONAL SEAL:

DISCLAIMER:
THIS DRAWING IS THE SOLE PROPERTY OF IKO INDUSTRIES LTD. (IKO) AND MAY NOT BE COPIED, PUBLISHED OR DISCLOSED BY ANY RECIPIENT THEREOF OR USED FOR ANY PURPOSE OTHER THAN THE SPECIFIC PURPOSE FOR WHICH IT HAS BEEN PROVIDED TO THE RECIPIENT, WITHOUT THE PRIOR WRITTEN CONSENT OF IKO. USE OF THIS DRAWING MAY BE SUBJECT TO OTHER TERMS AND CONDITIONS AS SET OUT IN ANY CONTRACT BETWEEN IKO AND THE RECIPIENT

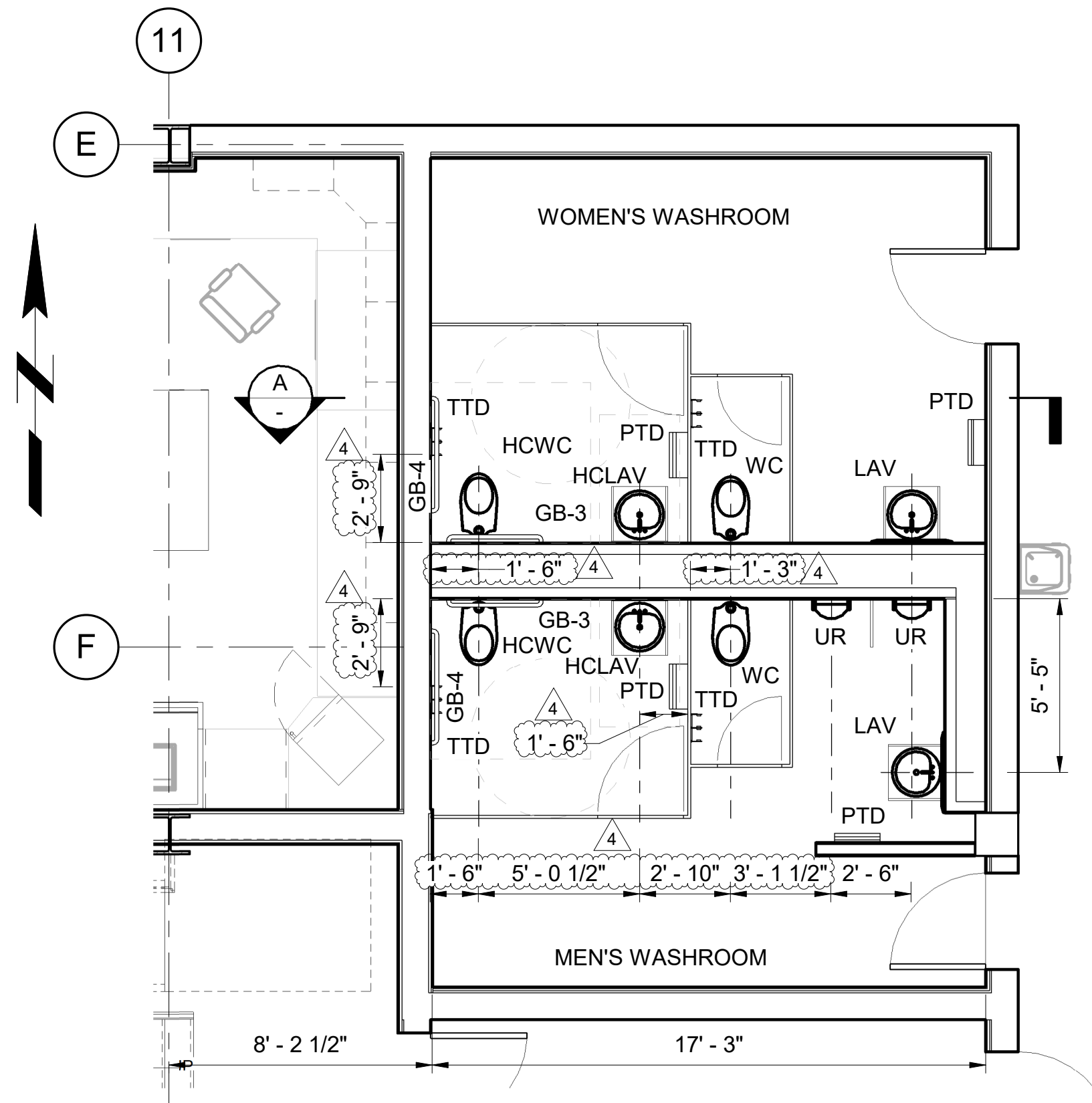
REV.	DESCRIPTION	DATE	DRN.	CHK.	APPR.	REV.	DESCRIPTION	DATE	DRN.	CHK.	APPR.
						3	ASI #2	2024/24/05	PJD	DV	SBG
						2	ISSUED FOR CONSTRUCTION	2024/12/04	NVS	DV	SBG
						1	ISSUED FOR CONSTRUCTION	2024/13/03	NVS	JCV	SBG
5	ASI #12	2024/28/08	NVS	DV	SBG	0	ISSUED FOR CONSTRUCTION	2024/18/01	NNN	JCV	SBG
4	ASI-08 PERMIT REISSUE	2024/25/07	SG	DV	SBG	A	ISSUED FOR REVIEW	2024/05/01	NNN	JCV	SBG

CONSULTANT:
COOPER & ASSOCIATES LLC
Engineers - Project Managers
2200 Ellis Road, New Lenox, Illinois, 60451
Phone: 815-740-0860 www.cooper-engr.com

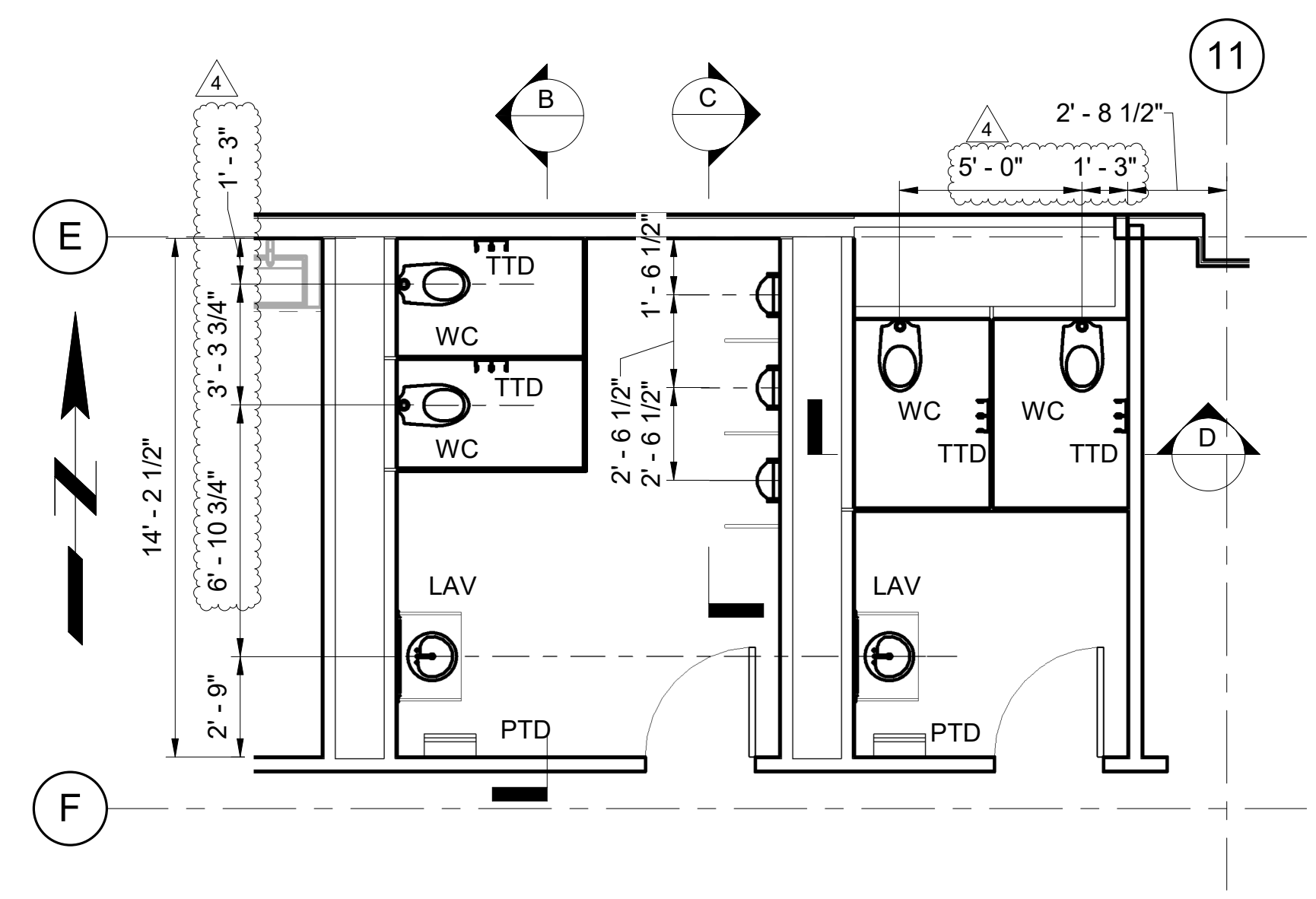


IKO INDUSTRIES LTD.
IKO CLAY HILL
PROJECT TITLE:
CLAY HILL SHINGLE PLANT
TITLE:
BUILDING: PLANT OFFICE
FLOOR PLAN
CONSULTANT DRAWING#:
1285-1031
PROJECT#:
22027
OWNER DRAWING#:
22027-CH01-S-DWG-1031
DWG#:
1031
REV:
5

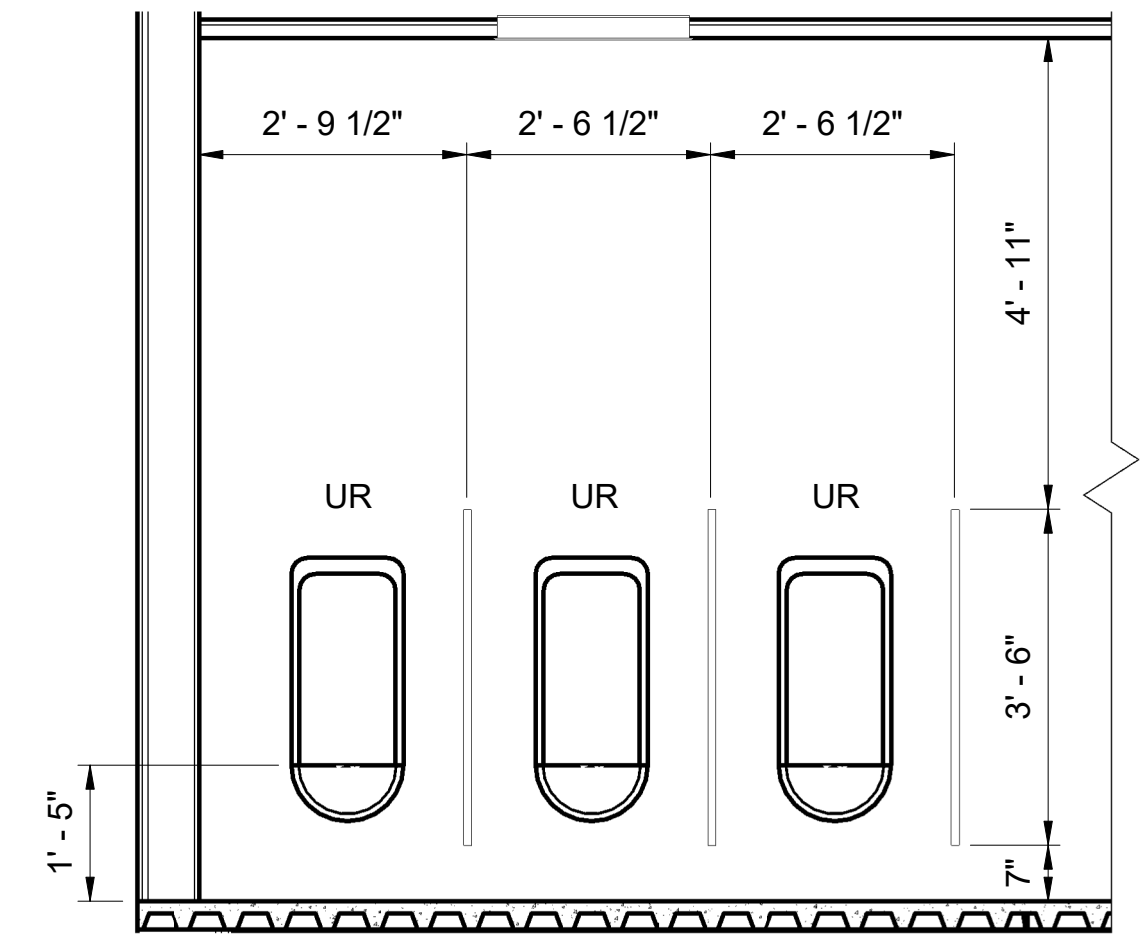
DATE:
01/03/2024



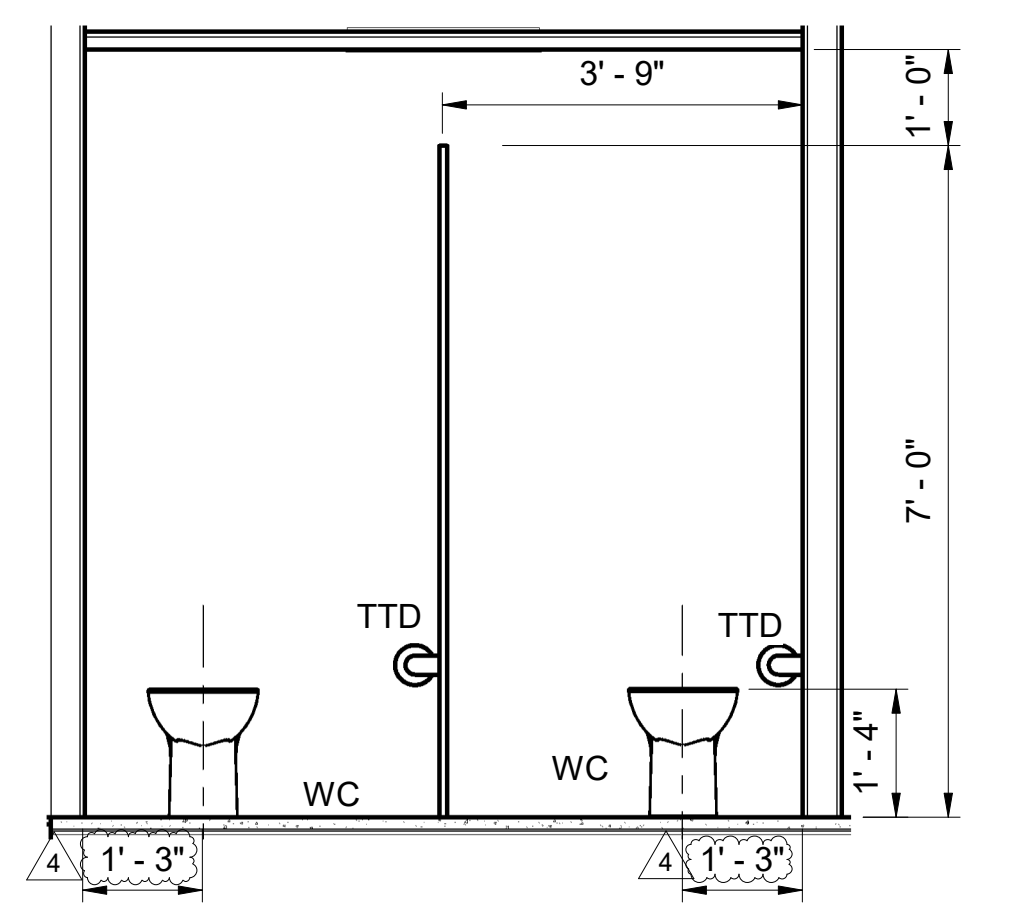
ENLARGED DETAIL 4
SCALE: 1/4" = 1'-0" 1030



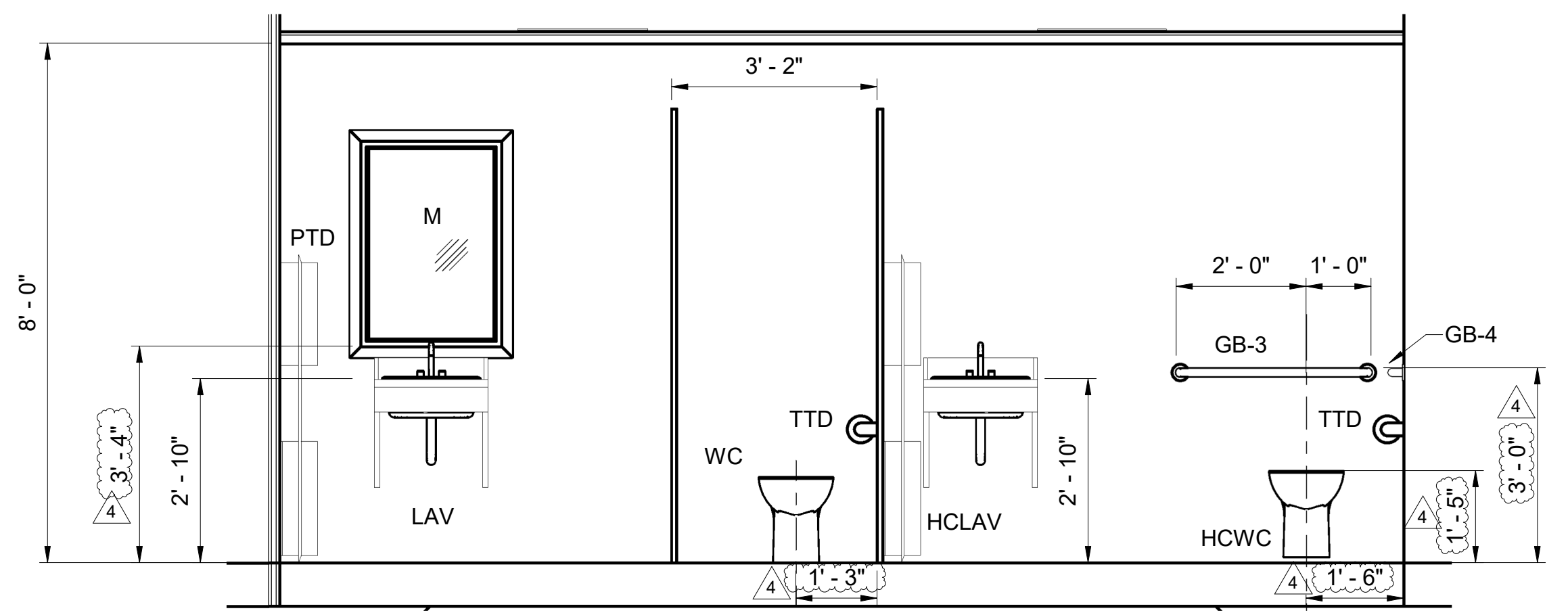
ENLARGED DETAILS 2
SCALE: 1/4" = 1'-0" 1031



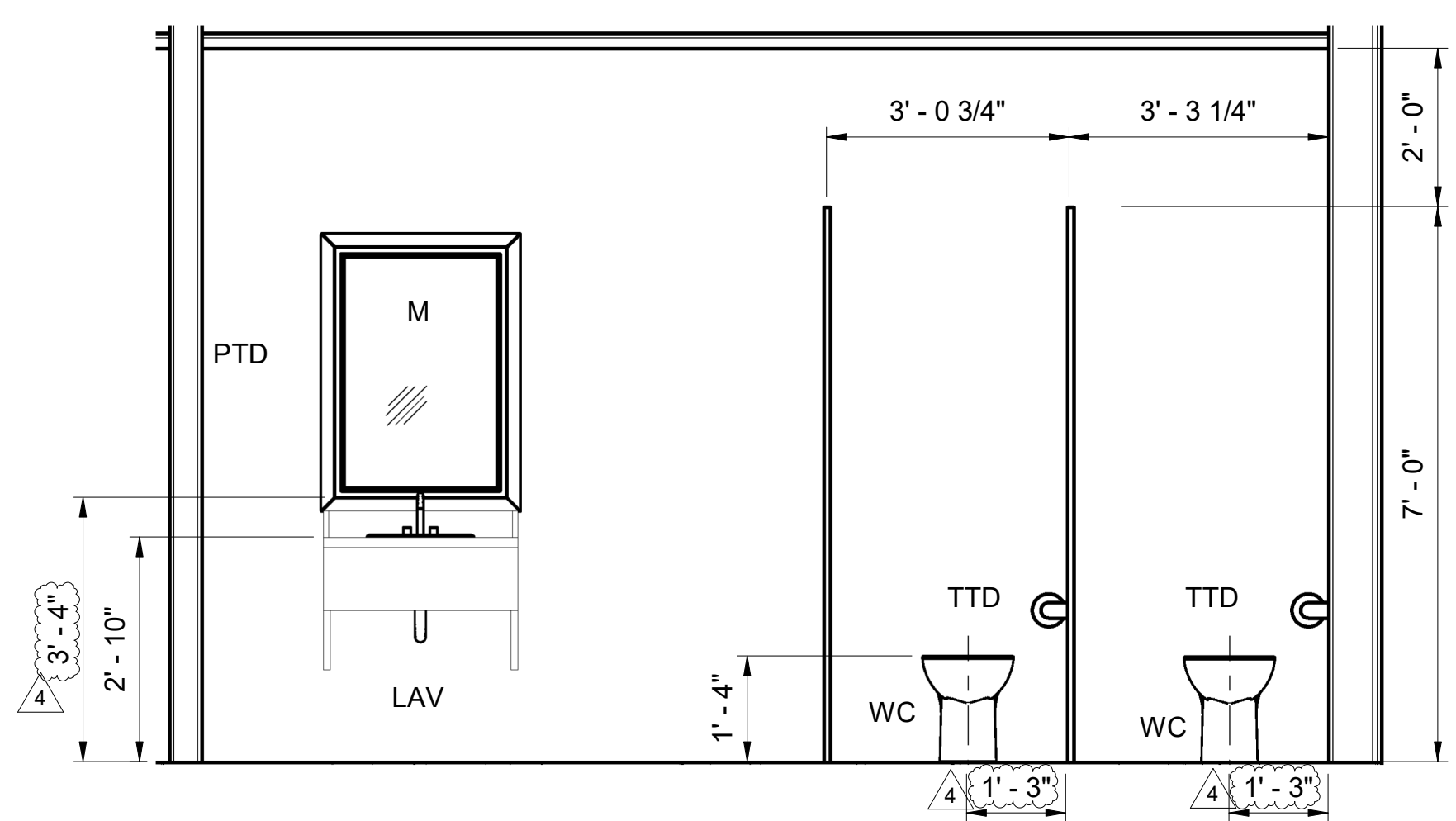
SECTION C
SCALE: 1/2" = 1'-0" 1031



SECTION D
SCALE: 1/2" = 1'-0" 1031



SECTION A
SCALE: 1/2" = 1'-0" 1031



SECTION B
SCALE: 1/2" = 1'-0" 1031

LEGENDS	
M	MIRROR
WC	WATER CLOSET
LAV	LAVATORY
GB-3	36" GRAB BAR
GB-4	42" GRAB BAR
UR	URINALS
PTD	PAPER TOWEL DISPENSER
TTD	TOILET TISSUE DISPENSER
HCLAV	HANDICAP ACCESSIBLE LAVATORY
HCWC	HANDICAP ACCESSIBLE WATER CLOSET

NOTES:

1. FOR STRUCTURAL GENERAL NOTES SEE DRAWING 1285-6000, 1285-6002, 1285-6003 AND 1285-6004.

ISSUED FOR CONSTRUCTION



PROFESSIONAL SEAL:

DISCLAIMER:
THIS DRAWING IS THE SOLE PROPERTY OF IKO INDUSTRIES LTD. (IKO) AND MAY NOT BE COPIED, PUBLISHED OR DISCLOSED BY ANY RECIPIENT THEREOF OR USED FOR ANY PURPOSE OTHER THAN THE SPECIFIC PURPOSE FOR WHICH IT HAS BEEN PROVIDED TO THE RECIPIENT, WITHOUT THE PRIOR WRITTEN CONSENT OF IKO. USE OF THIS DRAWING MAY BE SUBJECT TO OTHER TERMS AND CONDITIONS AS SET OUT IN ANY CONTRACT BETWEEN IKO AND THE RECIPIENT

REV.	DESCRIPTION	DATE	DRN.	CHK.	APPR.	REV.	DESCRIPTION	DATE	DRN.	CHK.	APPR.
						3	ASI-08 PERMIT REISSUE	2024/25/07	SG	DV	SBG
						2	ASI #2	2024/24/05	PJD	DV	SBG
						1	ISSUED FOR CONSTRUCTION	2024/12/04	NVS	DV	SBG
						0	ISSUED FOR CONSTRUCTION	2024/18/01	NNN	JCV	SBG
4	ASI #12	2024/28/08	NVS	DV	SBG	A	ISSUED FOR REVIEW	2024/05/01	NNN	JCV	SBG

IKO
CONSULTANT:
COOPER & ASSOCIATES, LLC
Engineers - Project Managers
2200 Ellis Road, New Lenox, Illinois, 60451
Phone: 815-740-0860 www.cooper-engr.com

IKO INDUSTRIES LTD.
IKO CLAY HILL
PROJECT TITLE:
CLAY HILL SHINGLE PLANT
TITLE:
BUILDING: PLANT OFFICE
RESTROOM ENLARGED DETAILS
CONSULTANT DRAWING#: 1285-1032
PROJECT#: 22027
OWNER DRAWING#: 22027-CH01-S-DWG-1032
DWG#: 1032
REV: 4