

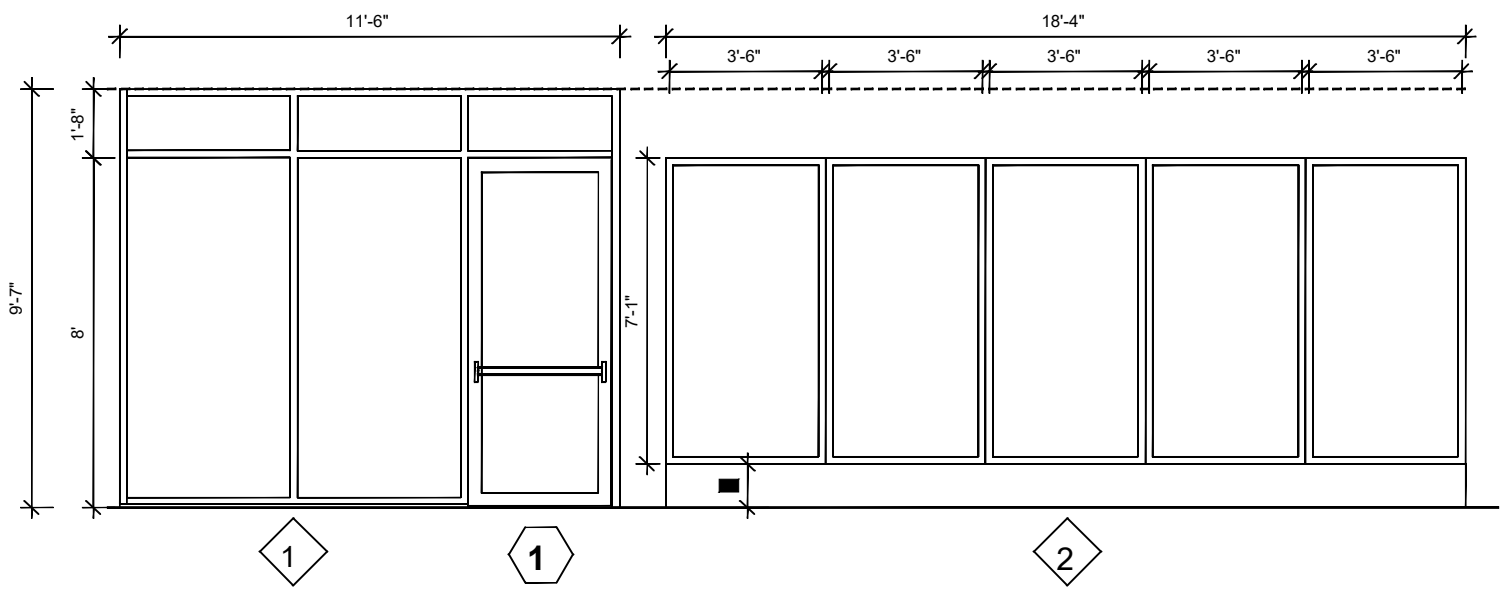
WIND DESIGN CRITERIA	
ASCE 7-20 / FLORIDA BUILDING CODE 2020	
DESIGN VELOCITY	180 M.P.H.
EXPOSURE	C
CATEGORY	II

NEW EXTERIOR DOOR SCHEDULE - (GROUND FLOOR)

MARK	ROOM NAME	WIDTH	HEIGHT	Qty	MATERIAL	TYPE	REMARKS	(psf) WIND PRESSURES	
								-	+
1	SHELL	38'-1/2"	96"	1	ALUMINUM/GLASS	FRENCH/SWING HIGH IMPACT	SERIE 650 Aluminum Outswing Doors NOA No. 17-1102.19 Exp: March 23, 2022 / App: March 28, 2018	-41.1	+37.7

NEW EXTERIOR WINDOWS SCHEDULE - (GROUND FLOOR)

MARK	ROOM NAME	WIDTH	HEIGHT	Qty	MATERIAL	TYPE	REMARKS	(psf) WIND PRESSURES	
								-	+
1	SHELL	11'-6" x 115" (see elevation A-7)		1	ALUMINUM/GLASS	FIXED HIGH IMPACT	SERIE MG-500 Mr. Glass Door & Windows, Inc. NOA No. 18-0314.07 Exp: Dec 24, 2023 / App: Aug 09, 2018	-37.3	+33.9
2	SHELL	8'-4"	8'-0"	5	ALUMINUM/GLASS	FIXED HIGH IMPACT	FIXED IMPACT WINDOWS Lawson Industries, Inc. NOA No. 22-0613.03 Exp: Aug 22, 2022 / App: July 14, 2022	-38.5	+35.1



DOOR (3'-4" x 7'-0")
SERIE MG-500
ECO Window Systems, LLC.
NOA No. 18-0314.07
Exp Date: Dec 24, 2023
App Date: Aug 09, 2018

DOOR (3'-4" x 7'-0")
SERIE MG-500
Mr. Glass Door & Windows, Inc.
NOA No. 18-0314.07
Exp Date: Dec 24, 2023
App Date: Aug 09, 2018

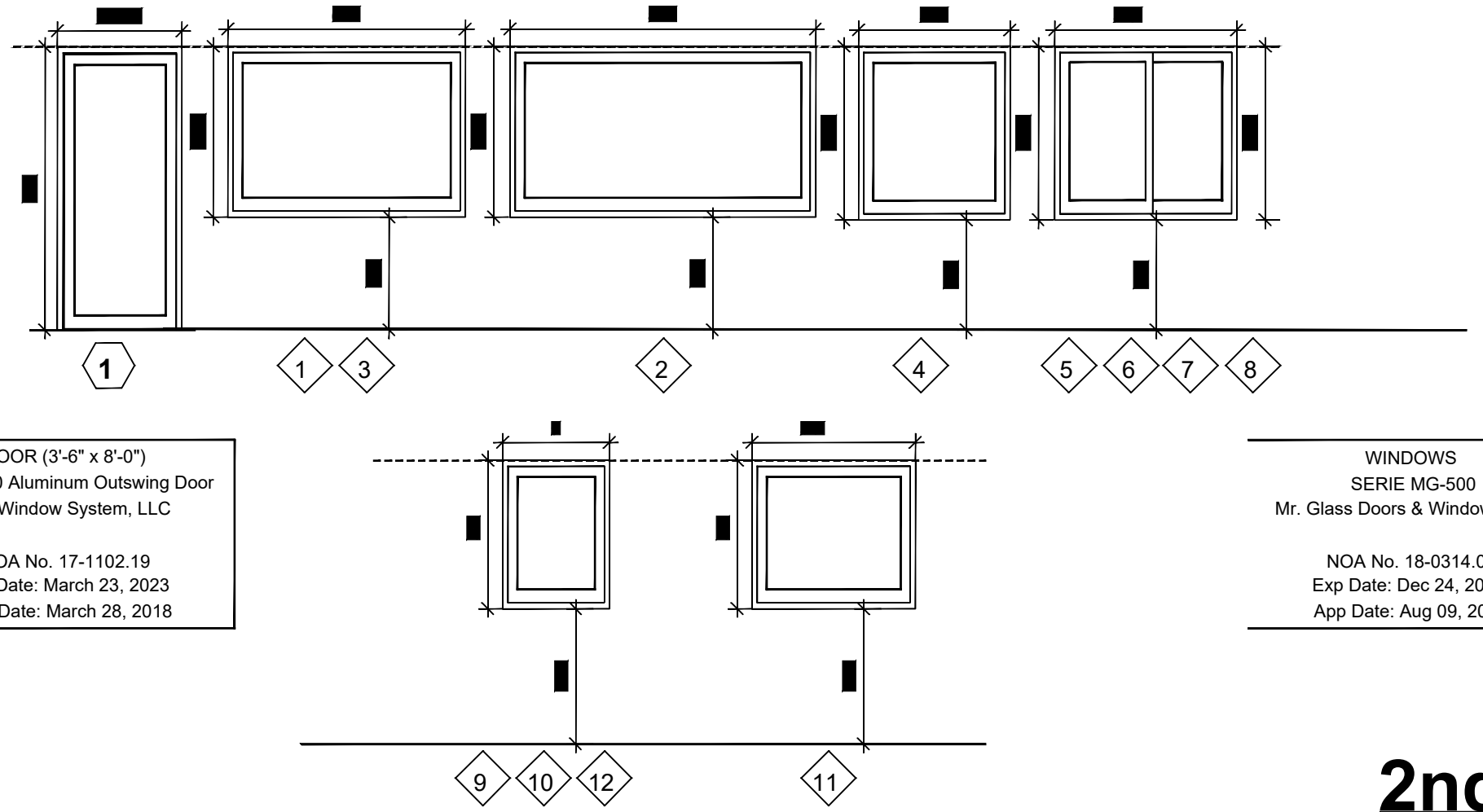
GROUND FLOOR

NEW EXTERIOR DOORS SCHEDULE - (2ND. FLOOR)

MARK	ROOM NAME	WIDTH	HEIGHT	Qty	MATERIAL	TYPE	REMARKS	(psf) WIND PRESSURES	
								-	+
1	OFFICE	38'-1/2"	96"	1	ALUMINUM/GLASS	FRENCH/SWING HIGH IMPACT	SERIE 650 Aluminum Outswing Doors NOA No. 17-1102.19 Exp: March 23, 2022 / App: March 28, 2018	-41.1	+37.7
2	APARTMENT 1	38'-1/2"	96"	1	ALUMINUM/GLASS	FRENCH/SWING HIGH IMPACT	SERIE MG-500 Mr. Glass Door & Windows, Inc. NOA No. 18-0314.07 Exp: Dec 24, 2023 / App: Aug 09, 2018	-41.1	+37.7
3	APARTMENT 2	38'-1/2"	96"	1	ALUMINUM/GLASS	FRENCH/SWING HIGH IMPACT	SERIE MG-500 Mr. Glass Door & Windows, Inc. NOA No. 18-0314.07 Exp: Dec 24, 2023 / App: Aug 09, 2018	-41.1	+37.7

NEW EXTERIOR WINDOWS SCHEDULE - (2ND. FLOOR)

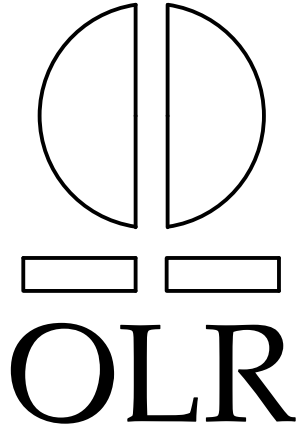
MARK	ROOM NAME	WIDTH	HEIGHT	Qty	MATERIAL	TYPE	REMARKS	(psf) WIND PRESSURES	
								-	+
1	OFFICE	80"	57'-1/2"	2	ALUMINUM/GLASS	FIXED HIGH IMPACT	SERIE MG-500 Mr. Glass Door & Windows, Inc. NOA No. 18-0314.07 Exp: Dec 24, 2023 / App: Aug 09, 2018	-39.5	+36.1
2	OFFICE	103"	57'-1/2"	1	ALUMINUM/GLASS	FIXED HIGH IMPACT	SERIE MG-500 Mr. Glass Door & Windows, Inc. NOA No. 18-0314.07 Exp: Dec 24, 2023 / App: Aug 09, 2018	-39.6	+36.2
3	OFFICE	80"	57'-1/2"	2	ALUMINUM/GLASS	FIXED HIGH IMPACT	SERIE MG-500 Mr. Glass Door & Windows, Inc. NOA No. 18-0314.07 Exp: Dec 24, 2023 / App: Aug 09, 2018	-39.5	+36.1
4	OFFICE	56"	58'-1/2"	2	ALUMINUM/GLASS	FIXED HIGH IMPACT	SERIE MG-500 Mr. Glass Door & Windows, Inc. NOA No. 18-0314.07 Exp: Dec 24, 2023 / App: Aug 09, 2018	-40.3	+36.9
5	APARTMENT 1	54"	55'-1/2"	1	ALUMINUM/GLASS	HORIZONTAL ROLLER	SERIE 350 Mr. Glass Door & Windows, Inc. FL#1890-R1 Exp: Aug 27, 2025	-41.7	+38.7
6	APARTMENT 1	54"	55'-1/2"	1	ALUMINUM/GLASS	HORIZONTAL ROLLER	SERIE 350 Mr. Glass Door & Windows, Inc. FL#1890-R1 Exp: Aug 27, 2025	-41.7	+38.7
7	APARTMENT 2	54"	55'-1/2"	1	ALUMINUM/GLASS	HORIZONTAL ROLLER	SERIE 350 Mr. Glass Door & Windows, Inc. FL#1890-R1 Exp: Aug 27, 2025	-41.7	+38.7
8	APARTMENT 2	54"	55'-1/2"	1	ALUMINUM/GLASS	HORIZONTAL ROLLER	SERIE 350 Mr. Glass Door & Windows, Inc. FL#1890-R1 Exp: Aug 27, 2025	-41.7	+38.7
9	APARTMENT 2	36"	50"	1	ALUMINUM/GLASS	FIXED HIGH IMPACT	SERIE MG-500 Mr. Glass Door & Windows, Inc. NOA No. 18-0314.07 Exp: Dec 24, 2023 / App: Aug 09, 2018	-42.7	+39.3
10	APARTMENT 2	36"	50"	2	ALUMINUM/GLASS	FIXED HIGH IMPACT	SERIE MG-500 Mr. Glass Door & Windows, Inc. NOA No. 18-0314.07 Exp: Dec 24, 2023 / App: Aug 09, 2018	-42.7	+39.3
11	APARTMENT 1	55"	50"	2	ALUMINUM/GLASS	FIXED HIGH IMPACT	SERIE MG-500 Mr. Glass Door & Windows, Inc. NOA No. 18-0314.07 Exp: Dec 24, 2023 / App: Aug 09, 2018	-42.7	+39.3
12	APARTMENT 1	36"	50"	2	ALUMINUM/GLASS	FIXED HIGH IMPACT	SERIE MG-500 Mr. Glass Door & Windows, Inc. NOA No. 18-0314.07 Exp: Dec 24, 2023 / App: Aug 09, 2018	-42.7	+39.3



DOOR (3'-6" x 8'-0")
Series 650 Aluminum Outswing Door
ECO Window System, LLC
NOA No. 17-1102.19
Exp Date: March 23, 2023
App Date: March 28, 2018

WINDOWS
SERIE MG-500
Mr. Glass Doors & Windows, Inc.
NOA No. 18-0314.07
Exp Date: Dec 24, 2023
App Date: Aug 09, 2018

2nd. FLOOR



ARCHITECT
ORESTES LOPEZ-RECIO
AR0009350

5895 SW 32 ST
MIAMI, FLORIDA
33155
PHONE: (305)360-2836

OWNER:
1820 SW 3 AVE LLC
90 SW 3ST UNIT 7 (IVY LOBBY)
MIAMI FL 33130

PROPOSED INTERIOR
LEGALIZATION FOR:
1820 SW 3 AVE LLC
1820 SW 3RD AVE
MIAMI FLORIDA, 33129

SEAL

REVISIONS

DATE 07-31-24
SCALE AS SHOWN
DRAWN : OLR
JOB NO. : 24-2670

A-06

SHEET NO.: OF