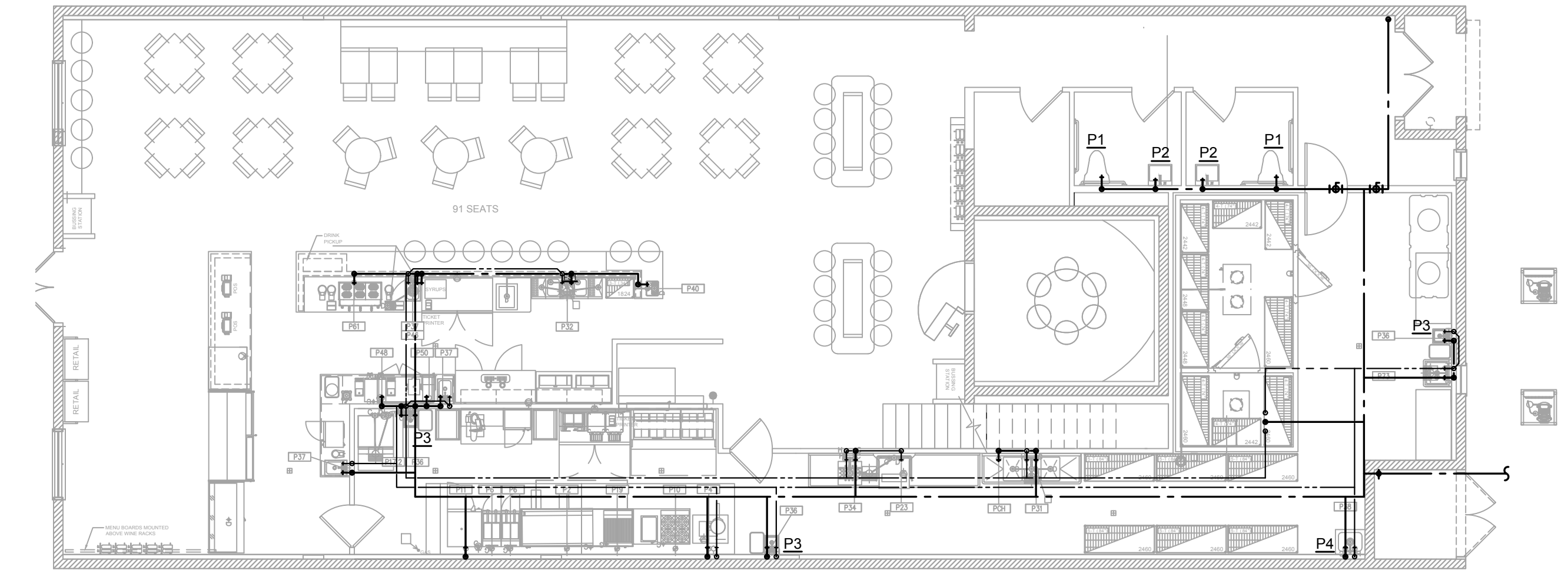
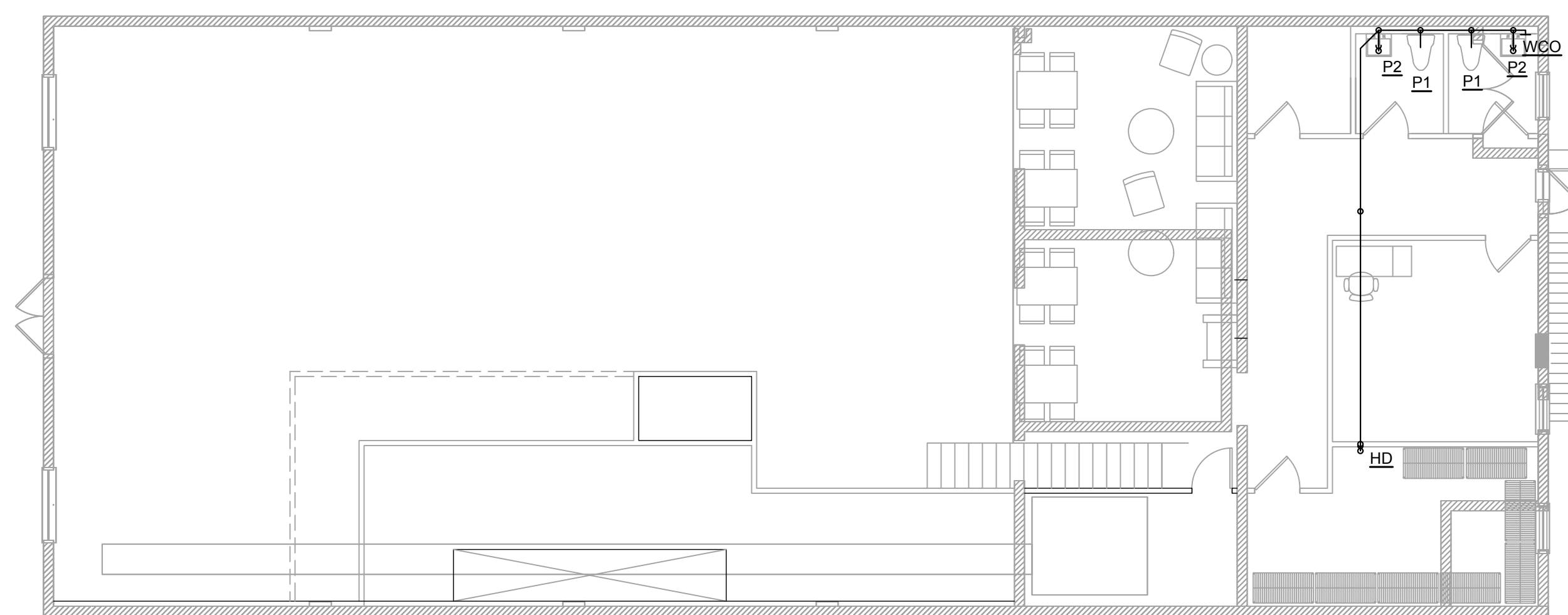


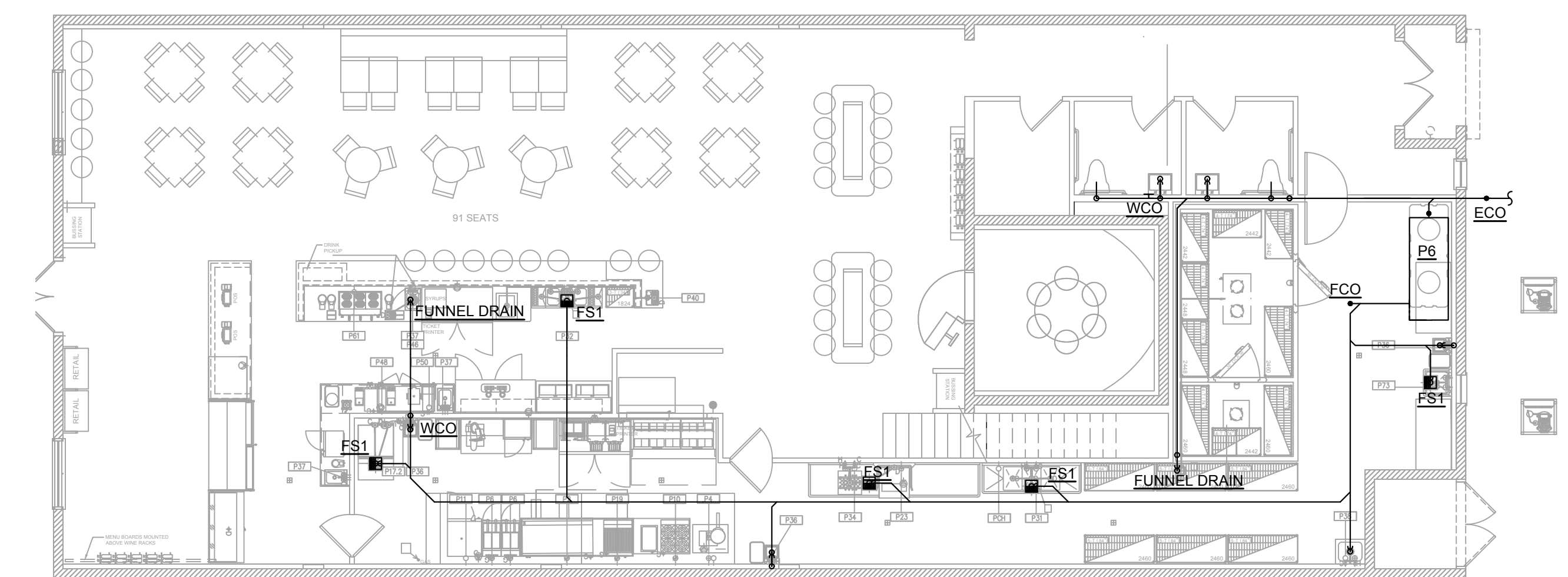
PLUMBING SUPPLY PLAN - MEZZANINE
SCALE: 1/8" = 1'-0"



PLUMBING SUPPLY PLAN - GROUND FLOOR
SCALE: 1/8" = 1'-0"



PLUMBING SANITARY PLAN - MEZZANINE
SCALE: 1/8" = 1'-0"



PLUMBING SANITARY PLAN - GROUND FLOOR
SCALE: 1/8" = 1'-0"

Not Valid for Permitting
Without Complete Signatures,
Seal and Date

No.		Date		Description	
By	Date	By	Date	Description	By
10					
11					
12					
13					
14					
15					
16					

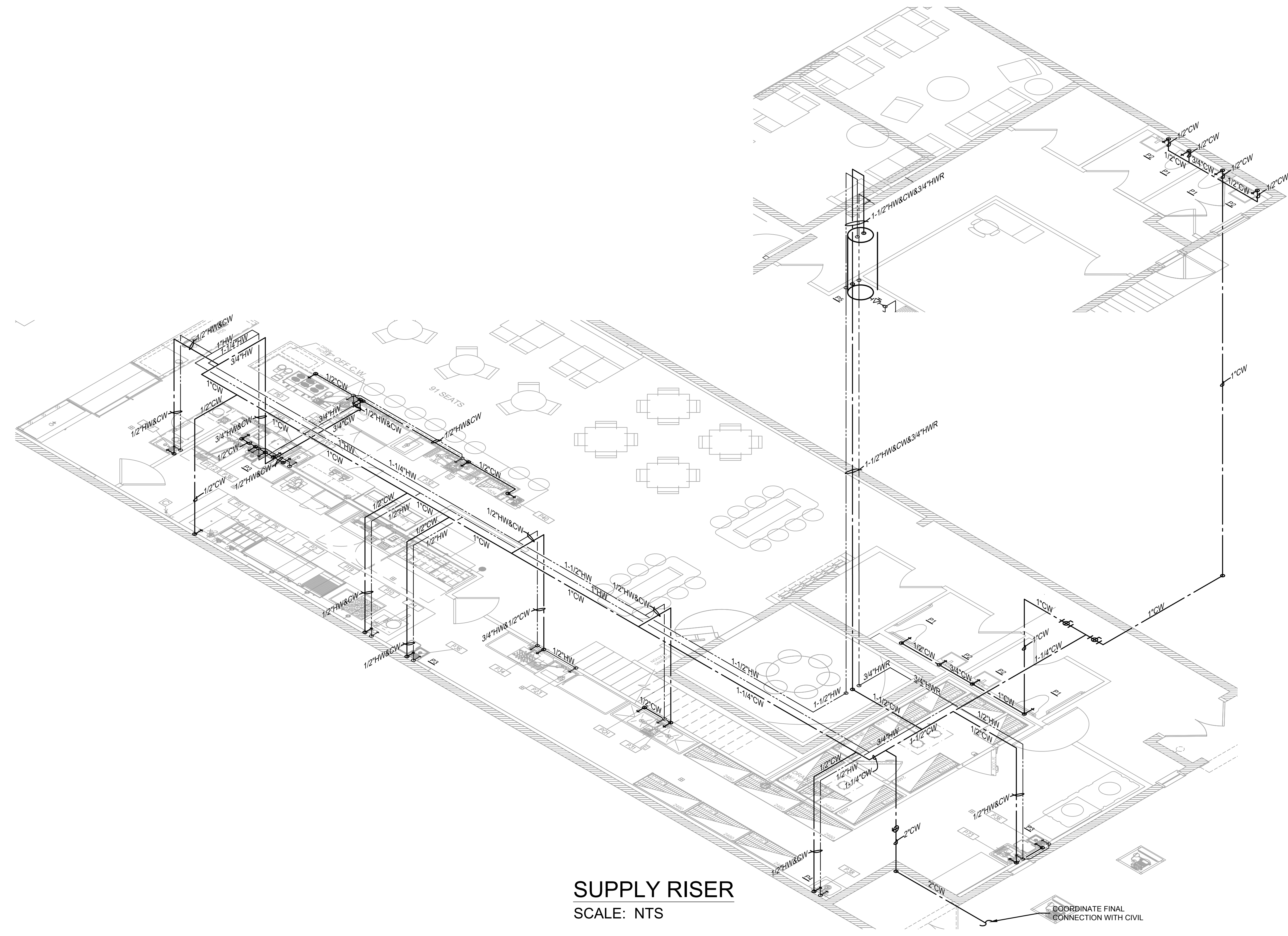


C.O.A. #26758
ILSON ARGENTI
ENGINEERING
504 E. TYLER STREET
TAMPA, FL 33602
WORKWITHWG.COM
813.855.3330

Project Number: 22.3024.00
Drawn By:
Checked By: KJK
Project Name:
SOUTHERN GROUNDS & CO
556 CENTRAL AVE
ST. PETERSBURG, FL
Drawing Name:
PLUMBING
SUPPLY & WASTE
FLOOR PLAN

TP1.0

Not Valid for Permitting
Without Copied Signature,
Seal and Date



SUPPLY RISER
SCALE: NTS

COORDINATE FINAL
CONNECTION WITH CIVIL

No.		Date	By	Description	Revised
01	1/22/22	WG	WG	PRICING SET	10
02					11
03					12
04					13
05					14
06					15
07					16



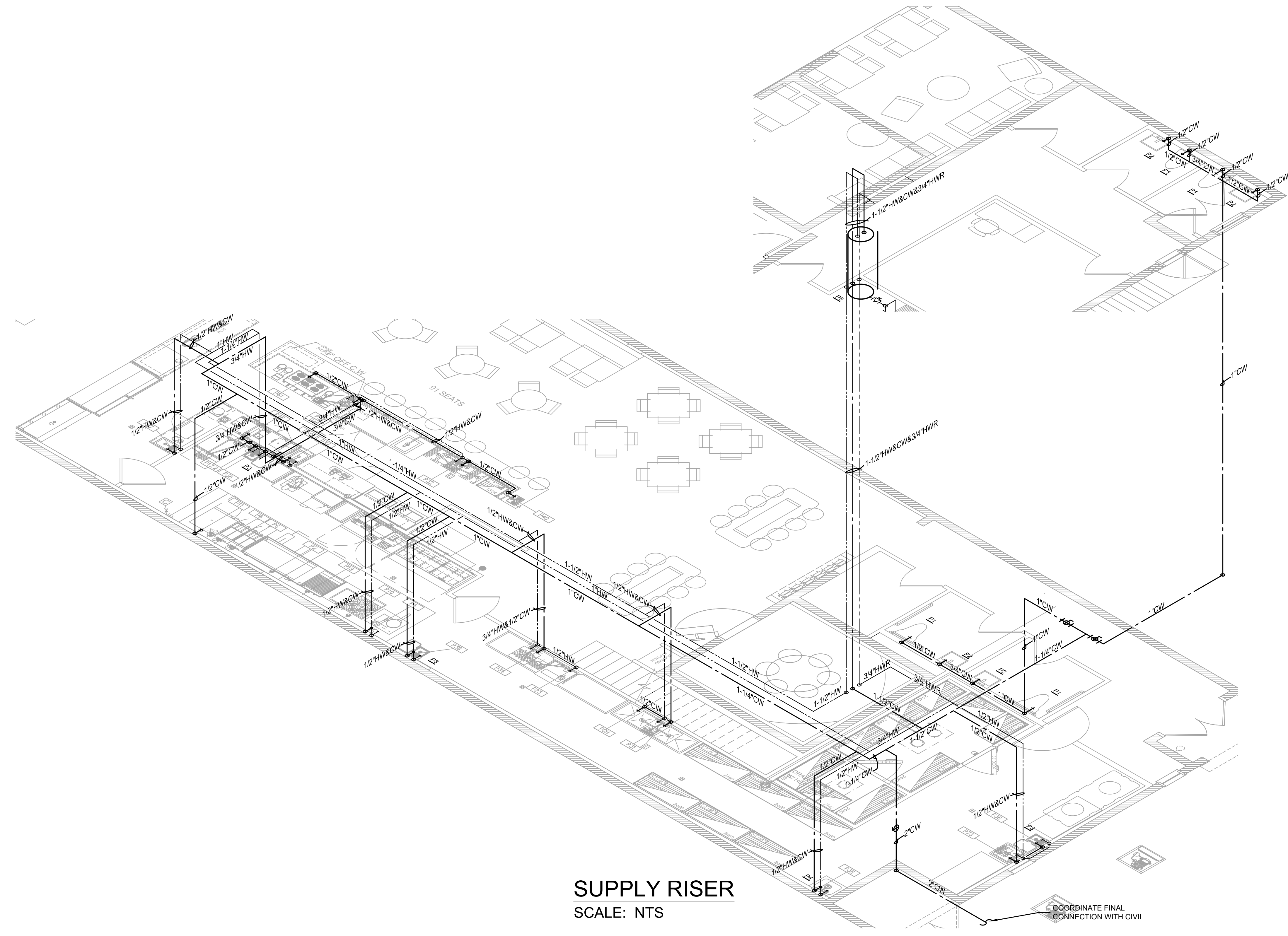
C.O.A. #26759

GILSON ARGENTI
ENGINEERING
504 E. TYLER STREET
TAMPA, FL 33602
WORKWITHWG.COM
813.855.3330

Project Number: 22.3024.00
Drawn By:
Checked By: KJK
Project Name:
SOUTHERN GROUNDS & CO
556 CENTRAL AVE
ST. PETERSBURG, FL
Drawing Name:
PLUMBING
SUPPLY RISER

TP1.1

Not Valid for Permitting Without Complete Signatures and Date



SUPPLY RISER
SCALE: NTS

COORDINATE FINAL CONNECTION WITH CIVIL

Issues and Revisions		Revision	Description	Date	By	Checked
01		1/22/22	WG PRICING SET			
02						
03						
04						
05						
06						
07						



C.O.A. #26758

504 E. TYLER STREET
TAMPA, FL 33602
WORKWITHWG.COM
813.895.3330

Project Number: 22.3024.00
Drawn By:
Checked By: KJK
Project Name:
SOUTHERN GROUNDS & CO
556 CENTRAL AVE
ST. PETERSBURG, FL
Drawing Name:
PLUMBING
WASTE RISER

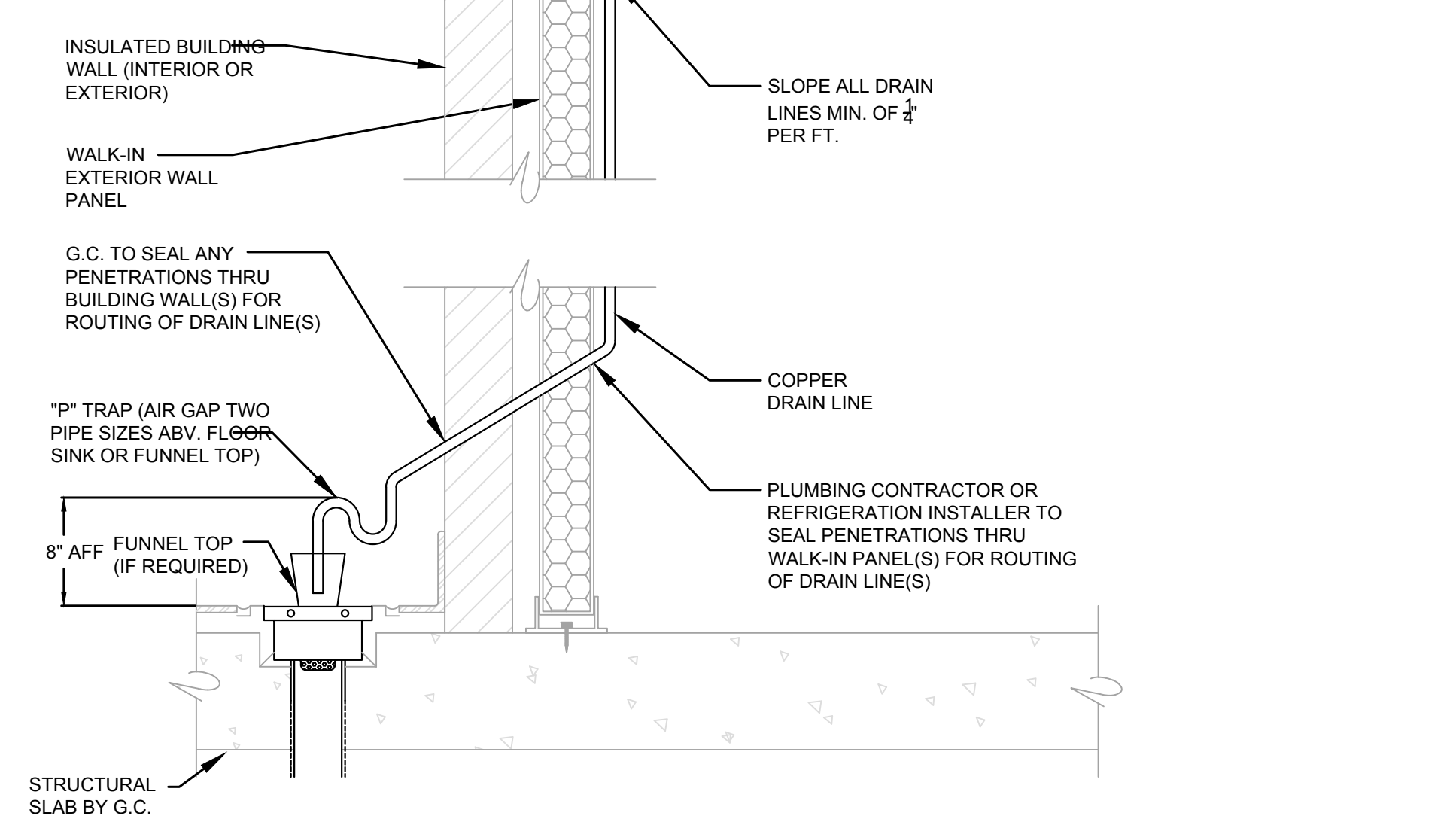
TP1.2

Not Valid for Permitting
Without Code Signatures,
Seal and Date

PNO	FIXTURE DESCRIPTION	MOUNTING HEIGHT	MIN. CONNECTIONS			SPECIFICATION						NOTES	
			WASTE	CW	HW	MANUFACTURER	FIXTURE	TRIM	WASTE	MCGUIRE TRAP	SUPPLY		
P1	ADA WATER CLOSET FLOOR MOUNTED FLUSH TANK 1.1 GAL/FLUSH	FLOOR TO RIM 16-12"	4"	1/2"	---	AMERICAN STANDARD 2487.100	---	---	---	---	---	MCGUIRE 2189	SEAT - OLSONITE 65 OR EQUIVALENT BY BENEKE OR BEMIS PROVIDE FLUSH HANDLE ON LAV SIDE OF TANK AND ANGLE STOP
P2	LAVATORY WALL HUNG 21"X18" 4" CENTER HOLES	FLOOR TO BOTTOM OF APRON MIN. 29"	1 1/4"	1/2"	---	AMERICAN STANDARD 0355.012	---	2411015.002	MCGUIRE 8872C	MCGUIRE LFST07	---	---	PROVIDE FLOOR MOUNTED CARRIER BY JOSAM, WADE, OR ZURN PROVIDE PRE-MOLDED PRE-INSULATED COVER FOR TRAP & SUPPLIES PROVIDE DRAIN OFFSET TO PROVIDE HANDICAP CLEARANCE PROVIDE P-TRAP AND ANGLE STOPS
P3	THERMOSTATIC MIXING VALVE	---	---	3/8"	3/8"	---	---	---	---	---	---	---	PROVIDE THERMOMETER IN DISCHARGE PIPE. 3/8" CW/HW INLET 3/8" TW OUTLET SHALL BE ASSE-1070 COMPLAINT
P4	MOP SINK FLOOR MOUNTED 24"X24"X12"	FLOOR MOUNTED	3"	1/2"	1/2"	STERN-WILLIAMS SB-800	---	---	---	---	---	---	MOUNT TRIM 3'-0" ABOVE FINISHED FLOOR AND PROVIDE 4'-0" HOSE AND HOSE HOOK
P5	GAS WATER HEATER	FLOOR MOUNTED	---	1-1/2"	1-1/2"	A.O. SMITH BTH-150	---	---	---	---	---	---	PROVIDE WITH 150 MBH, 120V, 1.48 AMP, 1" GAS CONNECTION, LEAVING WATER TEMPERATURE 140 DEGREE, 100 GALLON NON-ASKER DIRECT VENT 98% EFFICIENCY, 33" DIAMETER, ZERO CLEARANCE 3" VENT WITH LED FUNCTION DISPLAY
P6	GREASE INTERCEPTORS	SEE PLAN	4"	1-1/4"	---	SCHIER MI-FAB	---	---	---	---	---	---	INTERCEPTORS 200 GPM. SEE CALCULATION ON SHEET THIS SHEET. PROVIDE MAN HOLE EXTENSIONS AS NEEDED WITH TRAFFIC RATED CAST IRON TOPS.

NOTES:

- IT SHALL BE THE RESPONSIBILITY OF THE GENERAL CONTRACTOR TO DETERMINE IF ROUTING & INSTALLATION OF CONDENSATE DRAIN LINES SHALL BE IN THE SCOPE OF THE PLUMBING CONTRACTOR OR REFRIGERATION CONTRACTOR. WHOEVER ASSUMES RESPONSIBILITY FOR THIS SCOPE SHALL ALSO ASSUME RESPONSIBILITY FOR SEALING ANY PENETRATIONS REQUIRED IN THE WALK-IN PANELS.
- DRAIN LINES & P-TRAPS SHALL BE SUPPLIED & INSTALLED BY PLUMBING CONTRACTOR (OR REFRIGERATION CONTRACTOR) IN ACCORDANCE WITH ALL LOCAL CODES.
- DRAIN LINES TO BE RIGID COPPER.
- G.C. TO PROVIDE ALL PENETRATIONS IN BUILDING WALLS, FLOORS, CEILING, OR ROOFS REQUIRED FOR ROUTING OF REFRIGERATION LINES, DRAIN LINES, & ELECTRICAL CONDUITS TO & FROM WALK-IN BOX. G.C. TO SEAL ALL PENETRATIONS ONCE INSTALLATIONS ARE COMPLETE.



WALK-IN CONDENSATE DRAIN LINE DETAIL NTS

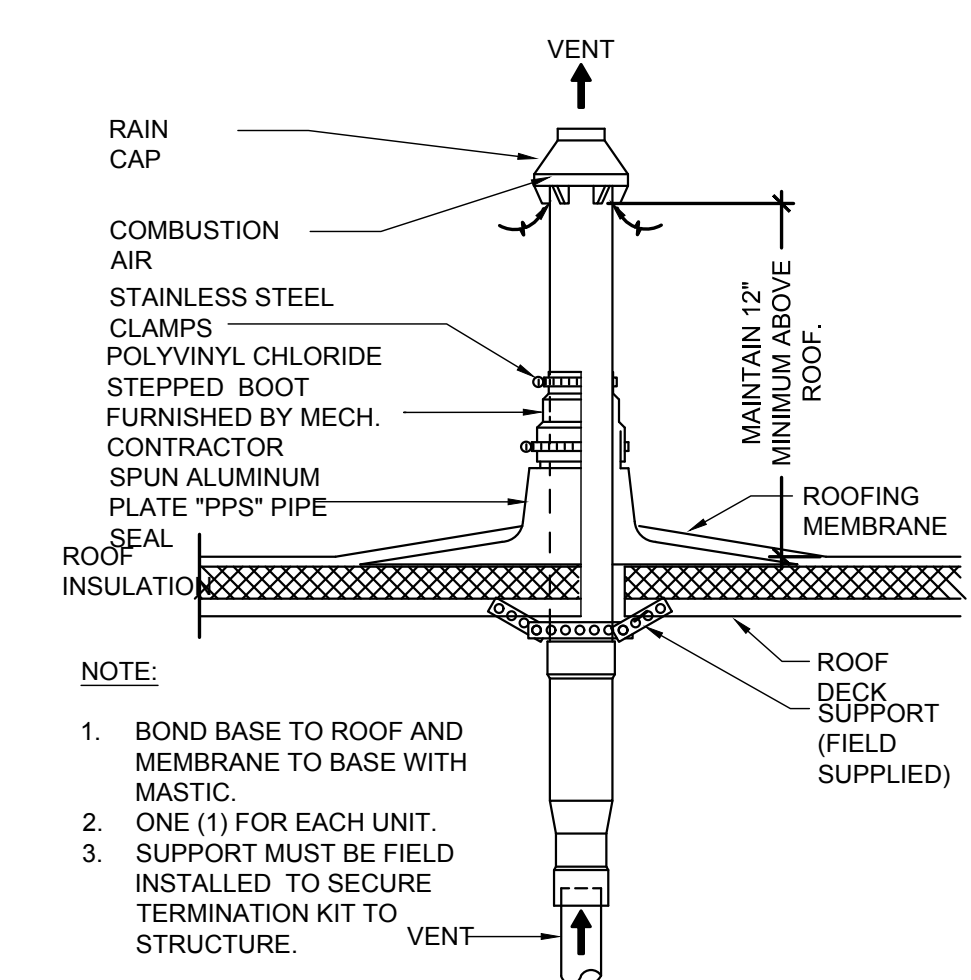
GREASE INTERCEPTOR SIZING				
STEP 1: FLOW RATE				
FLORIDA BUILDING CODE SECTION 1003.3.4				
GREASE INTERCEPTORS AND AUTOMATIC GREASE REMOVAL DEVICES SHALL BE SIZED IN ACCORDANCE WITH PDI G101, ASME A112.14.3.				
STEP 2: GREASE PRODUCTION				
1. ENTER APPROXIMATE NUMBER OF MEALS SERVED DAILY				
2. ENTER NUMBER OF DAYS BETWEEN PUMP OUT CYCLE (CYCLE IS 30 DAYS)				
3. SELECT GREAT BASIN UNIT THAT MOST CLOSELY MATCHES FLOW RATE AND GREASE STORAGE LBS.				
ENTER # MEALS/DAY	RESTAURANT TYPE	GREASE PER MEAL SEE SIZING GUIDELINES AT LINK BELOW	DAYS BETWEEN PUMP OUT	GREASE STORAGE NEEDED
RESTAURANTS WASHING DISHES AND FLATWARE				
0	LOW GREASE WITH FLATWARE	0.0065	0	0
0	MEDIUM GREASE WITH FLATWARE	0.0325	0	0
364	HIGH GREASE WITH FLATWARE	0.0455	60	993.73
RESTAURANTS USING DISPOSAL PLATES AND FLATWARE				
0	LOW GREASE WITH NO FLATWARE	0.005	0	0
0	MEDIUM GREASE WITH NO FLATWARE	0.025	0	0
0	HIGH GREASE WITH NO FLATWARE	0.035	0	0
TOTAL GREASE STORAGE NEEDED IN POUNDS				993.73
RECOMMENDED GREAT BASIN UNIT				(1) GB-250
(1) GB-250 GREASE INTERCEPTOR IS CERTIFIED TO THE ASME 112.14.3 AT 200 GPM TO HOLD 1,196 LBS OF GREASE				
MULTIPLE UNITS SHOULD BE INSTALLED IN SERIES AND COME STANDARD WITH TRAFFIC RATED MANHOLE COVERS.				
GB INSTALLATION: http://www.schierproducts.com/GI/gb_redesign/mst/gb_series_installation_o&m.pdf				
GREASE PRODUCTION SIZING METHOD: http://schierproducts.com/sizing/GB_Sizing.pdf				

PDI G101 SECTION 8.3.1, SIZING METHOD BASED ON PIPE DIAMETER AND SLOPE		
PIPE FULL PIPE FLOW RATE	INTERCEPTOR SIZE	INTERCEPTOR SIZE
2"	19.44 GPM	
3"	58.67 GPM	
4"	125.77 GPM	
6"	375 GPM	

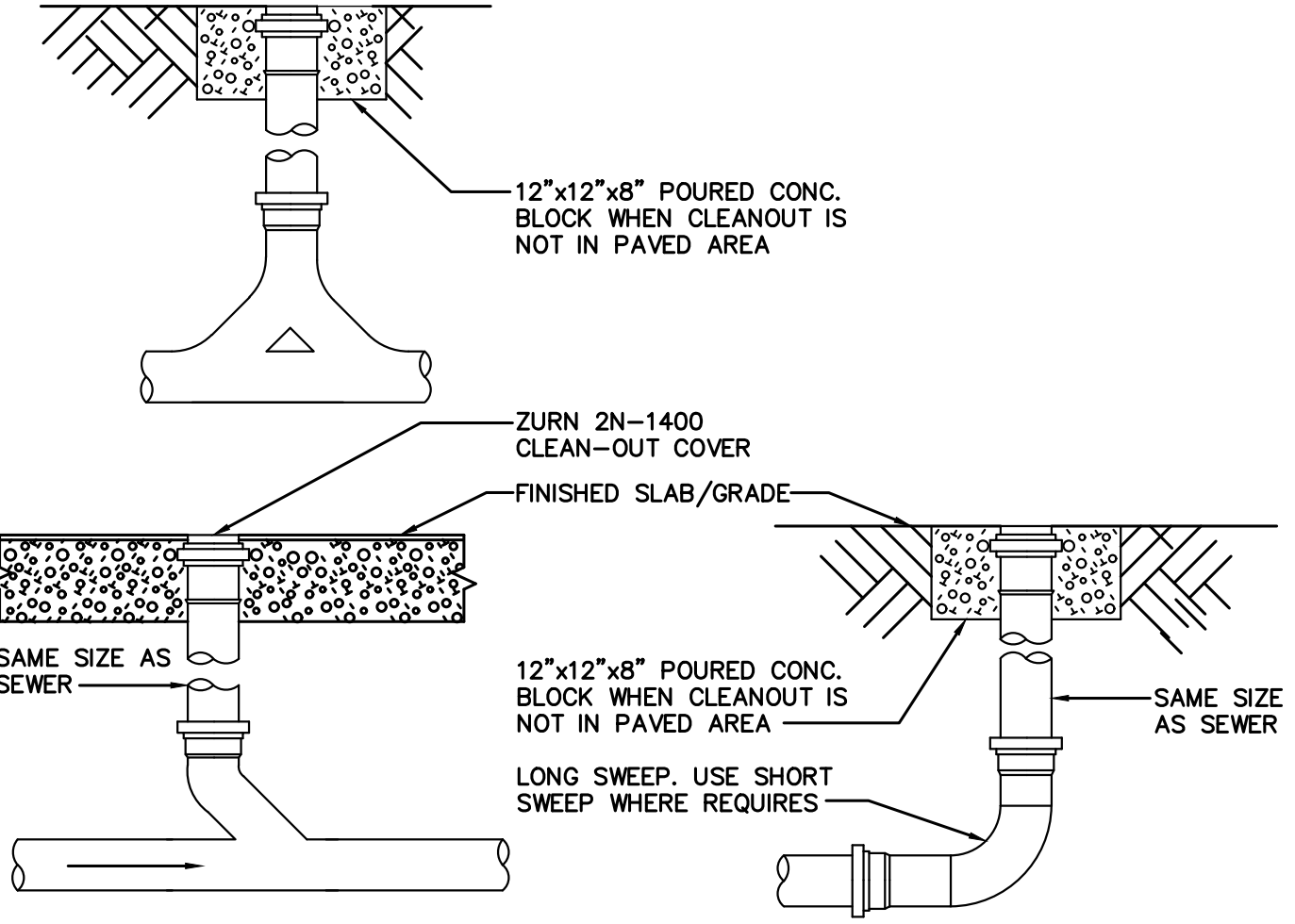
MARK	OUTLET SIZE	STRAINER SIZE	MANUFACTURER'S NUMBERS			NOTES
			JOSAM	WADE	ZURN	
FD1	3"	6" ROUND	A-6A-2-VP	EQUIVALENT	EQUIVALENT	SATIN FINISH BRONZE TOP PROVIDE W/PRECISION PLUMBING *OREGON #1* TRAP PRIMER
FS1	4"	12"X12"	49360-VP	EQUIVALENT	EQUIVALENT	PROVIDE WITH HALF GRATE PROVIDE SEDIMENT BUCKET
ECO	SEE PLANS	---	58660/ 58490-20	EQUIVALENT	EQUIVALENT	MOUNT IN 12"X12"X4" CONC. PAD IF LOCATED IN UNPAVED AREA
FCO	SEE PLANS	---	58363	EQUIVALENT	EQUIVALENT	
WCO	SEE PLANS	---	58912	EQUIVALENT	EQUIVALENT	STAINLESS STEEL WALL ACCESS COVER
TP	PRECISION PLUMBING *OREGON #1* TRAP PRIMER WITH 1/2" CW ROUTED BELOW SLAB TO FLOOR DRAIN/SINK					
HD	HUB DRAIN, PROVIDE 2" PTRAP, AND TRAP PRIMER IF NOT SERVING AN ICE MAKER. INSULATE FIRST FIVE FEET AFTER AND INCLUDING PTRAP WHEN RECEIVING ICE MAKER DRAINS IN MULTI STORY BUILDINGS.					

DRAIN AND CLEANOUT SCHEDULE

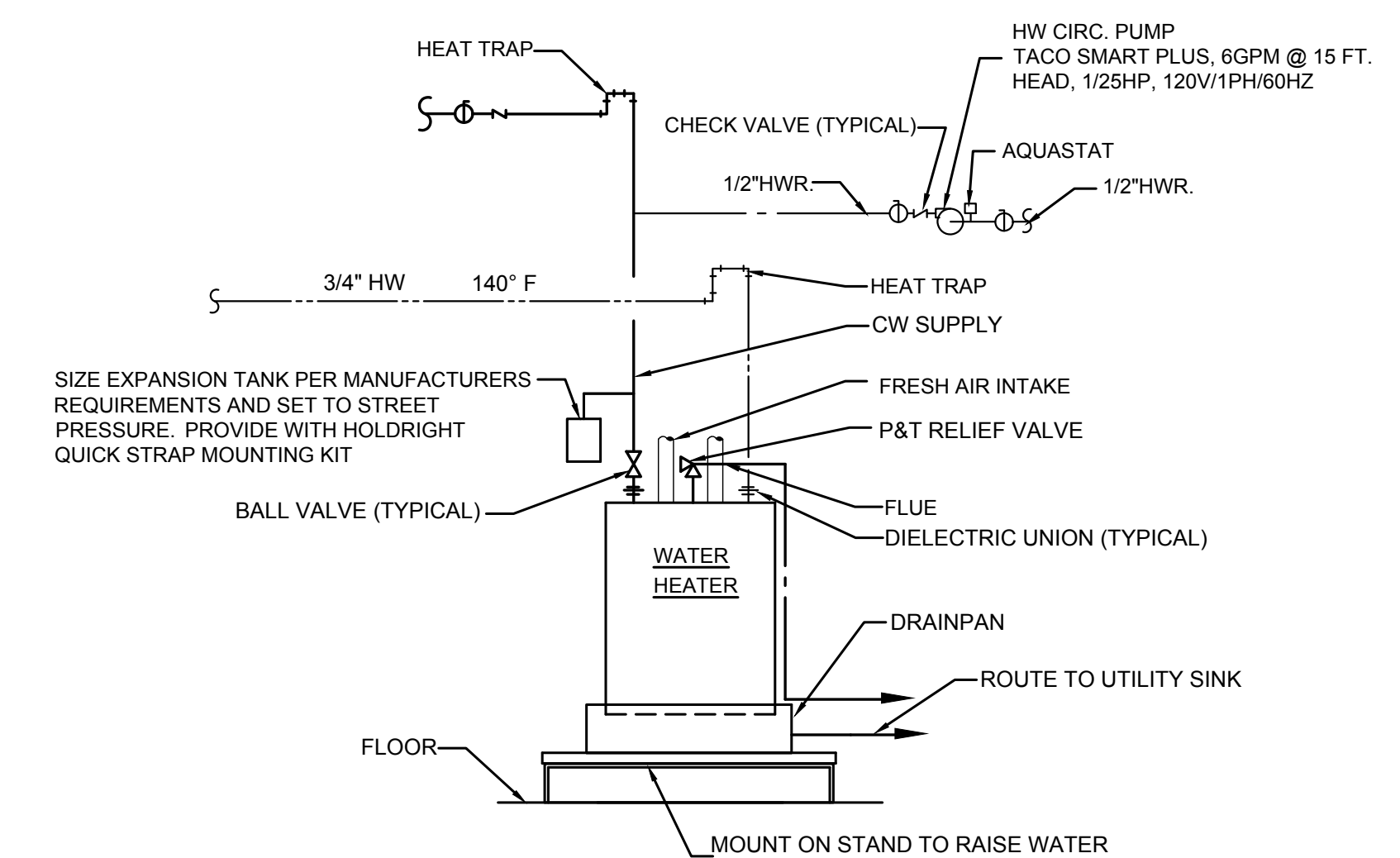
FOODSERVICE PLUMBING SCHEDULE														
PLUMBING TAG	C.W. SIZE	C.W. AFF (in)	H.W. SIZE	H.W. AFF (in)	FILTERED WATER	INDIRECT WASTE SIZE (IN)	INDIRECT WASTE #	DIRECT WASTE	DIRECT WASTE AFF (in)	GAS	MBTUH	GAS AFF (in)	EQUIPMENT CATEGORY	PLUMBING REMARKS
P2	-	-	-	-	-	-	-	-	-	3/4"	150.0	30	GRIDDLE, GAS, COUNTERTOP	BTC THRU GAS HOSE
P4	1/2"	12"	1/2"	12"	-	-	-	-	-	-	-	-	KETTLE, ELECTRIC COUNTERTOP	BTC
P6	-	-	-	-	-	-	-	-	-	3/4"	102.0	30"	GAS FLOOR FRYER	BTC THRU GAS HOSE
P10	-	-	-	-	-	-	-	-	-	3/4"	128.0	30"	HOTPLATE, COUNTERTOP, GAS	BTC THRU GAS HOSE
P11	1/2"	12"X18"	-	-	-	-	-	-	-	-	-	-	CONVECTION OVEN, ELECTRIC	BTC - 2 CONNECTIONS @ 0.75
P17	-	-	-	-	1/2"	3/4"	FS-2	-	-	-	-	-	ICE MAKER	FILTERED WATER FROM # 17.2 / RUN TO FLOOR DRAIN
P17.1	-	-	-	-	-	3/4"	FS-2	-	-	-	-	-	ICE BIN	RUN TO FLOOR DRAIN
P17.2	1/2"	84"	-	-	-	-	-	-	-	-	-	-	WATER FILTER	BTC
P19	-	-	-	-	-	-	-	-	-	3/4"	70.0	30"	CHARBROILER, GAS, COUNTERTOP	BTC THRU GAS HOSE
P23	-	-	1/2"	60"	-	2"	FS-3	-	-	-	-	-	DISHWASHER, SINGLE DOOR	BTC / RUN TO FLOOR DRAIN
P31	1/2"	16"	1/2"	16"	-	2-1/2"	FS-4	-	-	-	-	-	3 COMP. SINK + FAUCET	BTC / RUN TO FLOOR DRAIN
P32	1/2"	12"	1/2"	12"	-	2-1/2"	FS-1	-	-	-	-	-	UNDERBAR SINK	BTC / RUN TO FLOOR DRAIN
P33	-	-	-	-	-	2"	FS-3	-	-	-	-	-	SOILED DISHTABLE	RUN TO FLOOR DRAIN
P34	1/2"	16"	1/2"	16"	-	-	-	-	-	-	-	-	PRE-RINSE FAUCET	BTC
P36	1/2"	16"	1/2"	16"	-	-	-	-	-	-	-	-	HAND SINK	BTC / RUN TO DIRECT DRAIN
P37	1/2"	16"	1/2"	16"	-	1-1/2"	FFD-1	-	-	-	-	-	DROP-IN SINK	BTC / RUN TO FLOOR DRAIN
P38	1/2"	36"	1/2"	36"	-	-	-	-	3-1/2"	0"	-	-	MOP SINK	BTC
P40	1/2"	18"	-	-	-	-	1"	FS-1	-	-	-	-	GLASS FILLER STATION	BTC / RUN TO FLOOR DRAIN
P41	-	-	-	-	-	-	1"	FFD-1	-	-	-	-	DROP-IN ICE BIN	RUN TO FLOOR DRAIN
P46	1/2"	18"	-	-	-	1/2"	FFD-1	-	-	-	-	-	GLASS RINSER	BTC / RUN TO FLOOR DRAIN
P48	1/2"	48"	-	-	-	-	-	-	-	-	-	-	COFFEE BREWER	BTC @ 3/8"
P50	1/2"	48"	-	-	-	-	-	-	-	-	-	-	ICED TEA BREWER	BTC @ 1/4"
P61	1/2"	16"	-	-	-	-	-	-	-	-	-	-	ESPRESSO MACHINE	BTC @ 1/4"
P70.1	-	-	-	-	-	-	1"	FFD-2	-	-	-	-	WALK-IN COOLER EVAPORATOR	RUN TO FLOOR DRAIN
P70.3	-	-	-	-	-	-	1"	FFD-2	-	-	-	-	WALK-IN FREEZER EVAPORATOR	RUN TO FLOOR DRAIN
P73	1/2"	16"	1/2"	16"	-	2-1/2"	FS-5	-	-	-	-	-	ONE COMP. SINK	BTC / RUN TO FLOOR DRAIN
PCH	1/2"	48"	-	-	-	-	-	-	-	-	-	-	WATER FOR CLEANING CHEMICALS	BTC @ 3 COMP. SINK



CONCENTRIC VENT/COMBUSTION AIR INSTALLATION DETAIL NTS



TYPICAL CLEANOUT DETAIL NTS



WATER HEATER PIPING DIAGRAM NTS

ISSUES and Revisions													
No.	Description	By	Date										
01	WG PRELIM SET												
02													
03													
04													
05													
06													
07													



Project Number: 22.3024.00
Drawn By:
Checked By: KJK
Project Name:
SOUTHERN GROUNDS & CO
556 CENTRAL AVE
ST. PETERSBURG, FL

