

Not Valid for Permitting
Without Copy Signatures,
Seal and Date

PLAN SYMBOL	MANUFACTURER	MODEL NUMBER	DESCRIPTION
DS	ACUTY	WSX-PDT-D	WALL MOUNTED, DIMMABLE SINGLE-POLE, LINE-VOLTAGE, STANDARD RANGE DUAL TECHNOLOGY, LIGHTING OCCUPANCY SENSOR WITH BUILT-IN MANUAL OVERRIDE.
DS	ACUTY	WSX-PDT	WALL MOUNTED, ON/OFF SINGLE-POLE, LINE-VOLTAGE, STANDARD RANGE DUAL TECHNOLOGY, LIGHTING OCCUPANCY SENSOR WITH BUILT-IN MANUAL OVERRIDE.
Y	ACUTY	#PODM	ON/OFF OVERRIDE LOW-VOLTAGE PUSH BUTTON SWITCH WITH INDICATOR LIGHT. IN AREAS WITH MULTIPLE SWITCHES ADJACENT TO EACH OTHER, PROVIDE SINGLE PLATE WITH MULTIPLE GANGS.
D	ACUTY	#PODM DX	DIMMABLE OVERRIDE LOW-VOLTAGE PUSH BUTTON SWITCH WITH INDICATOR LIGHT. IN AREAS WITH MULTIPLE SWITCHES ADJACENT TO EACH OTHER, PROVIDE SINGLE PLATE WITH MULTIPLE GANGS.
PP16 SA EFP	ACUTY	#PP16 SA EFP	ON/OFF LOW VOLTAGE POWER PACK, LIGHTS TO TURN OFF AFTER 20 MINUTES UNLESS REQUESTED FOR LESS TIME.
PP16 SA D EFP	ACUTY	#PP16 SA D EFP	0-10V DIMMABLE LOW VOLTAGE POWER PACK, LIGHTS TO TURN OFF AFTER 20 MINUTES UNLESS REQUESTED FOR LESS TIME. CONTACT TENANT FOR DESIRED SET POINT.
PP16 D ER EFP	ACUTY	#PP16 D ER EFP	0-10V DIMMABLE LOW VOLTAGE EMERGENCY POWER PACK. WIRE SUCH THAT UNDER NORMAL CONDITIONS, POWER PACK WILL CONTROL CORRESPONDING EMERGENCY FIXTURES WITH DIRECTION FROM PAIRED ZULINK POWER PACK AND UNDER EMERGENCY CONDITIONS WILL POWER LIGHTS AT 100%.
SP5 PCD ELV 2W	ACUTY	#SP5 PCD ELV 2W	ELV DIMMABLE LOW VOLTAGE POWER PACK, LIGHTS TO TURN OFF AFTER 20 MINUTES UNLESS REQUESTED FOR LESS TIME. CONTACT TENANT FOR DESIRED SET POINT.
CM-PDT-9	ACUTY	#CM-PDT-9	CEILING PENDANTS/SURFACE MOUNTED, LOW-VOLTAGE, DUAL-TECHNOLOGY, LIGHTING OCCUPANCY SENSOR.
CM-PDT-10	ACUTY	#CM-PDT-10	CEILING PENDANTS/SURFACE MOUNTED, LOW-VOLTAGE, EXTENDED RANGE, DUAL-TECHNOLOGY, LIGHTING OCCUPANCY SENSOR.

NOTE: NOT ALL SYMBOLS MAY BE USED

LIGHTING NOTES

- PROVIDE NEW nDTC WITH 8 RELAYS TO CONTROL LIGHTING ZONES AS INDICATED ON PLAN.
- CIRCUIT AND RELAY CONTROLS TO BE ROUTED TO LIGHTING CONTROL PANEL nDTC.
- SWITCHES TO CONTROL LIGHTING RELAY ZONES AS INDICATED BY LOWER CASE LETTERING. (ONLY SHOWN ON PLAN AS (4) SWITCHES, BUT IS ACTUALLY (16), COORDINATE WITH OWNER/ARCHITECT TO COMBINE SWITCH GROUPS IS NECESSARY)

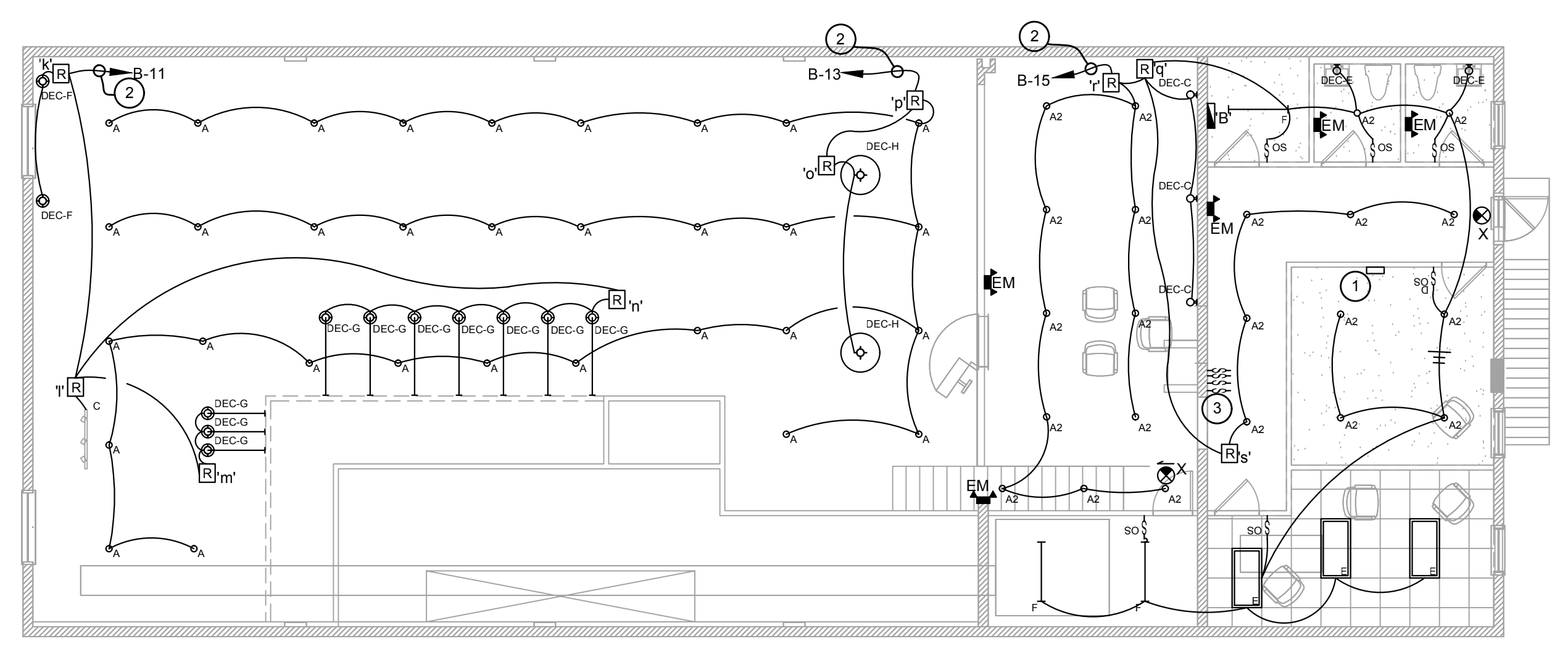
GENERAL NOTES:

- FOR 120V CIRCUITS, WHEN BRANCH CIRCUIT LENGTH EXCEEDS 75 FEET FROM PANEL, WIRING SHALL BE INCREASED TO #10 AWG WITH #10 AWG GROUND. WHEN BRANCH CIRCUIT LENGTH EXCEEDS 150 FEET FROM PANEL, BRANCH WIRING SHALL BE INCREASED TO #8 AWG WITH #8 AWG GROUND.
- CONNECT ALL EXIT SIGNS, EGRESS FIXTURES AND NIGHTLIGHTS ON THE UNSWITCHED LEG OF LOCAL LIGHTING CIRCUIT SHOWN.

FIXTURE, SWITCHING & DEVICE SUFFIXES:
E = EXISTING
N = NEW
R = RELOCATE, EXTEND/MODIFY EXISTING CONDUCTORS AS REQUIRED AND RECONNECT. REPLACE DEVICE IF REQUIRED.
a = INDICATES WHICH SWITCHES ARE TO CONTROL WHICH FIXTURES.
NL = NIGHTLIGHT

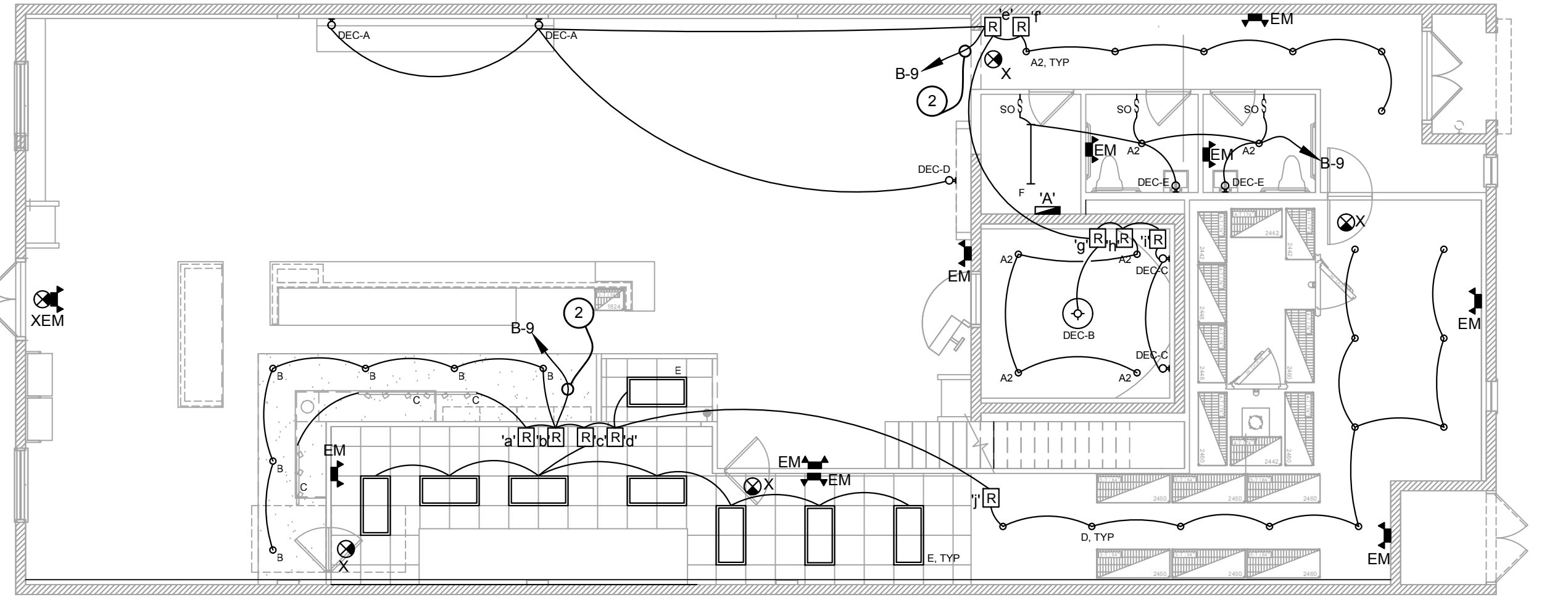
SPECIAL LIGHTING CONTROLS NOTES:

- LIGHTING CONTROL RELAY LOCATIONS DEPICTED ON PLAN ARE SCHEMATIC IN NATURE. CONTRACTOR SHALL COORDINATE LOCATION IN FIELD AND INSTALL RELAY IN CONCEALED LOCATION. RELAYS TO BE INSTALLED IN DRY, ACCESSIBLE LOCATION.
- ALL RELAYS TO BE TIED BACK TO nDTC.



MEZZANINE LIGHTING PLAN

SCALE: 1/8" = 1'-0"



FIRST FLOOR LIGHTING PLAN

SCALE: 1/8" = 1'-0"

LIGHT FIXTURE SCHEDULE							
TYPE	MANUFACTURER	CATALOG NO.	MOUNTING	VOLT	LAMP	REMARKS	SELECTION
A	LITON	DL4C330W-T30	SURFACE CEILING	120	LED 36W	SURFACE MOUNT DOWN LIGHT	A
A2		TO BE SELECTED BY OWNER	RECESSED	120	LED 35W MAX	RECESSED ROUND DOWNLIGHT	
B		TO BE SELECTED BY OWNER	RECESSED	120	LED 35W MAX	RECESSED ROUND DOWNLIGHT	
C		TO BE SELECTED BY OWNER	SURFACE	120	LED	TRACK LIGHTING, PROVIDE 2AMP CURRENT LIMITER PER RUN	
D		TO BE SELECTED BY OWNER	RECESSED	120	LED 35W MAX	RECESSED ROUND DOWNLIGHT	
E		TO BE SELECTED BY OWNER	LAY-IN	120	LED 35W MAX	LED 2X4	
F		TO BE SELECTED BY OWNER	SURFACE WALL	120	LED 35W MAX	LED UTILITY LIGHT	
DEC-A	CEDAR & MOSS	RAMONA 8"	SCONCE	120	LED 40W	DECORATIVE SCONCE, VERIFY MOUNTING HEIGHT WITH ARCHITECT	A
DEC-B	ALDER & ORE	KAITLYN CHANDELIER	PENDANT	120	LED 53W	DECORATIVE CHANDELIER	A
DEC-C		TO BE SELECTED BY OWNER	SCONCE	120	LED 35W MAX	DECORATIVE SCONCE, VERIFY MOUNTING HEIGHT WITH ARCHITECT	
DEC-D		TO BE SELECTED BY OWNER	SCONCE	120	LED 35W MAX	DECORATIVE SCONCE, VERIFY MOUNTING HEIGHT WITH ARCHITECT	
DEC-E	CEDAR & MOSS	VENUS	SCONCE	120	LED 40W	DECORATIVE SCONCE, VERIFY MOUNTING HEIGHT WITH ARCHITECT	A
DEC-F	ART CRAFT	AC6652BK	PENDANT	120	LED 18W	DECORATIVE PENDANT	A
DEC-G	CEDAR & MOSS	ISLE CORD PENDANT	PENDANT	120	LED 40W	DECORATIVE PENDANT	A
DEC-H	ART CRAFT	AC6656BK	SURFACE	120	LED 24W	DECORATIVE CHANDELIER	A
EM		TO BE SELECTED BY OWNER	SURFACE	120	LED	2 HEAD EM FIXTURE WITH 90-MIN BATTERY BACKUP IN FIXTURE.	
XEM		TO BE SELECTED BY OWNER	SURFACE CEILING	120	LED	EXIT SIGN / EM COMBO WITH 90-MIN BATTERY BACKUP IN FIXTURE.	
X		TO BE SELECTED BY OWNER	SURFACE CEILING	120	LED	EXIT SIGN WITH 90-MIN BATTERY BACKUP IN FIXTURE.	

NOTE:

A - ARCHITECT, EE - ELECTRICAL ENGINEER

ISSUES AND REVISIONS			
No.	Date	By	Description
01	1/22/22	WG	PRELIM SET
02			
03			
04			
05			
06			
07			
08			
09			
10			
11			
12			
13			
14			
15			
16			
17			
18			



Project Number:	22.3024.00
Drawn By:	
Checked By:	KLK
Project Name:	SOUTHERN GROUNDS & CO
	556 CENTRAL AVE
	ST. PETERSBURG, FL
Drawing Name:	LIGHTING PLAN



TL1.0

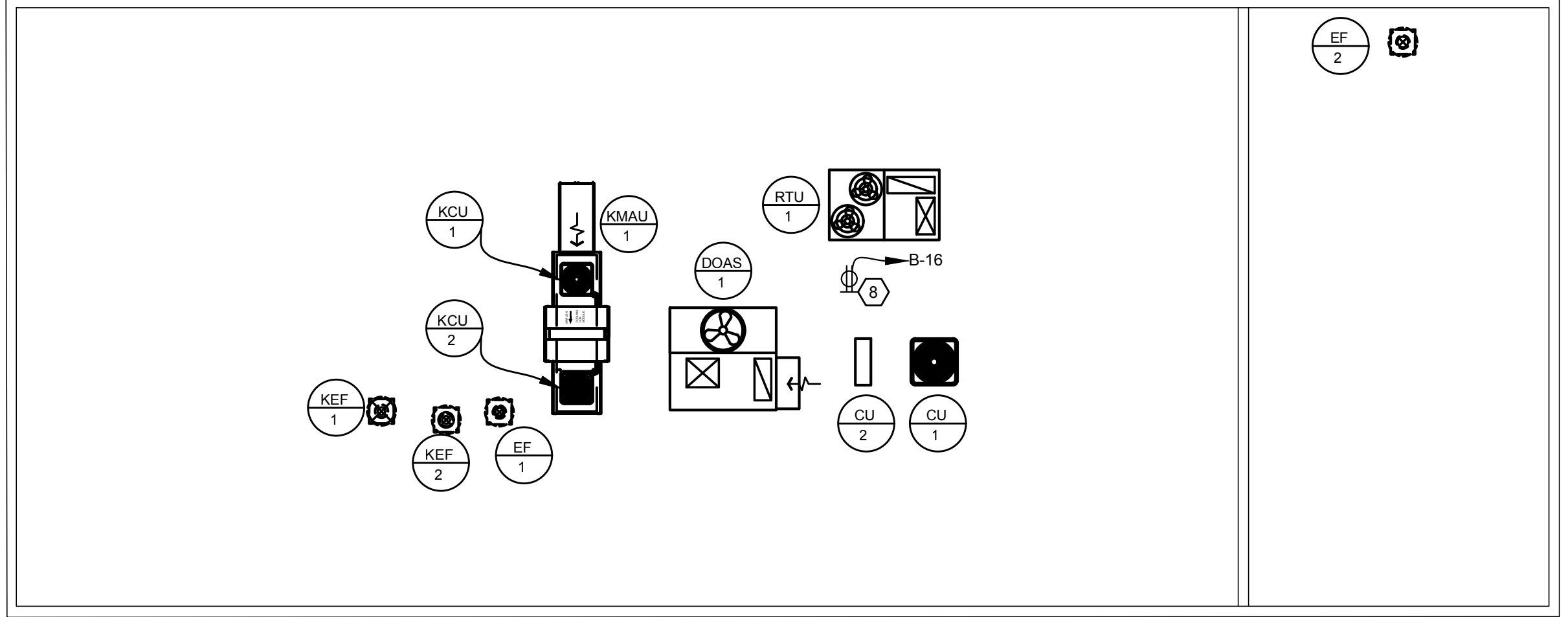
© 2022 Group 4 Design, Inc. All rights reserved. No part of this document may be reproduced, stored in a retrieval system, or transmitted in any form or by any means, electronic, mechanical, photocopying, recording, or by any information storage and retrieval system, without the prior written permission of Group 4 Design, Inc.

Not Valid for Permitting
Without Copy Signatures,
Seal and Date

MECHANICAL EQUIPMENT											
DESCRIPTION	ELECTRICAL CHARACTERISTICS			CIRCUIT DESIGNATION		BREAKER	FEEDER	EQUIP.	CONDUIT	DISCONNECT SWITCH	REMARKS
	VOLTS	PHASE	KW	HP	MCA	AMPS/POLES	R	(GROUND)			
HOOD(LIGHTS CONTROLS)	120				A-52	20 1	(2)#12	#12	1/2"	20A/ 1P SNAP	
KMAU-1	208	3			B-44,46,48	20 3	(3)#12	#12	3/4"	30A/3P/NF/NEMA-3R	
KCU-1	208	3			B-38,40,42	20 3	(3)#12	#12	3/4"	30A/3P/NF/NEMA-3R	
KCU-2	208	3			B-32,34,36	30 3	(3)#10	#10	3/4"	30A/3P/NF/NEMA-3R	
KEF-1	208	3			B-43,45,47	35 3	(3)#10	#10	3/4"	60A/3P/NF/NEMA-3R	
KEF-2	120				B-41	20 1	(2)#12	#12	1/2"	30A/2P/NF/NEMA-3R	
RTU-1	208	3	12		B-50,52,54	50 3	(3)#8	#10	1"	60A/3P/NF/NEMA-3R	
DOAS-1	208	3	10		B-49,51,53	45 3	(3)#8	#10	1"	60A/3P/NF/NEMA-3R	
CU-1	208	3			B-35,37,39	35 3	(3)#10	#10	1"	60A/3P/NF/NEMA-3R	
CU-2	208	1			B-28,30	15 2	(2)#12	#12	1/2"	30A/2P/NF/NEMA-3R	
FCU-1	208	3	11.3		B-29,31,33	50 3	(3)#8	#10	1"	60A/3P/NF/NEMA-1	
FCU-2	208	1	5		A-54,56	35 2	(2)#10	#10	1"	60A/2P/NF/NEMA-1	
EF-1	120				A-55	20 1	(2)#12	#12	1/2"	30A/2P/NF/NEMA-3R	
EF-2	120						(2)#12	#12	1/2"	30A/2P/NF/NEMA-3R	

ELECTRICAL NOTES

- PHONE BOARD, PROVIDE 4"x4"x3/4" FIRE RETARDANT PLYWOOD ON WALL AS SHOWN MOUNTED 6" DOWN FROM CEILING. VERIFY EXACT LOCATION WITH OWNER. PROVIDE 2" CONDUIT WITH PULL STRINGS TO TELEPHONE DEMARCATION.
- 12"x4"x1/4" COPPER BUS BAR, CONNECT TO BUILDING GROUND SYSTEM WITH A #8 INSULATED GROUND CONDUCTOR. BOND EACH EQUIPMENT TRACK IN ROOM WITH A #8 INSULATED GROUND CONDUCTOR. MOUNT BUS BAR ON PLYWOOD BACKBOARD.
- UNDER BAR RECEPTACLE MOUNT RECEPTACLES AT 38" AND HORIZONTAL ON CUSTOMER SIDE OF BAR. FIELD VERIFY EXACT LOCATION AND COLOR WITH OWNER AND ARCHITECT. DEVICE SHALL HAVE BUILT-IN USB CHARGING CAPABILITIES.
- SEE SHEET 'TE1.1' FOR ALL FOOD SERVICE EQUIPMENT
- DUCT MOUNTED SMOKE DETECTOR. WIRE SUCH THAT UPON ACTIVATION, UNIT SHUTS DOWN. PROVIDE TEST STATION ON WALL BELOW DETECTOR MOUNTED AT 5'. VERIFY EXACT LOCATION. PROVIDE LED LIGHT IN CEILING BELOW DETECTOR. SEE MECHANICAL PLANS FOR MORE INFORMATION.
- SHOW WINDOW RECEPTACLE. PROVIDE TIME CLOCK FOR CONTROL. MOUNT WITHIN 12" OF TOP OF WINDOW FIELD VERIFY EXACT LOCATION TO MINIMIZE CONFLICTS. PROVIDE CONTACTOR AND 24-7 TIME CLOCK FOR CONTROL. TIME CLOCK SHALL HAVE 10-HOUR BACK-UP.
- PROVIDE JUNCTION BOX FOR TENANT FUTURE STORE FRONT SIGN. VERIFY WITH ARCHITECT EXACT REQUIREMENTS PRIOR TO ROUGH-IN. CIRCUIT SHALL BE CONTROLLED BY A COMBINATION OF PHOTOCELL AND 24/7 TIME-CLOCK.
- PROVIDE WP/GFI 120V, 20A GENERAL MAINTENANCE RECEPTACLE WITH-IN 25' OF UNIT AS REQUIRED. PROVIDE POWER AS INDICATED.
- PROVIDE POWER FOR A 120V/1PH-1/6HP WATER HEATER CIRCULATING PUMP. VERIFY LOCATION PRIOR TO ROUGH-IN.

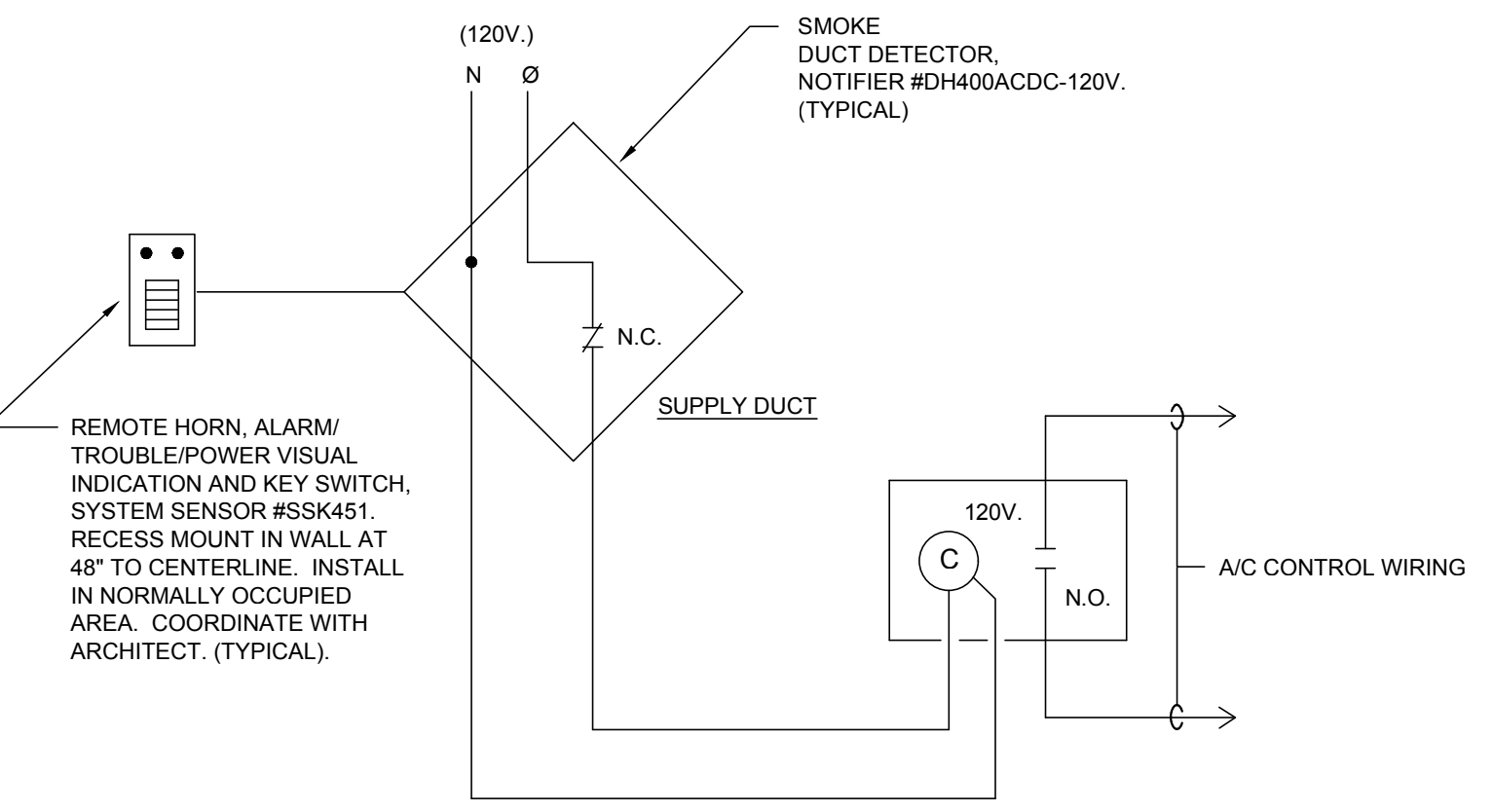


ELECTRICAL PLAN - ROOF
SCALE: 1/8" = 1'-0"

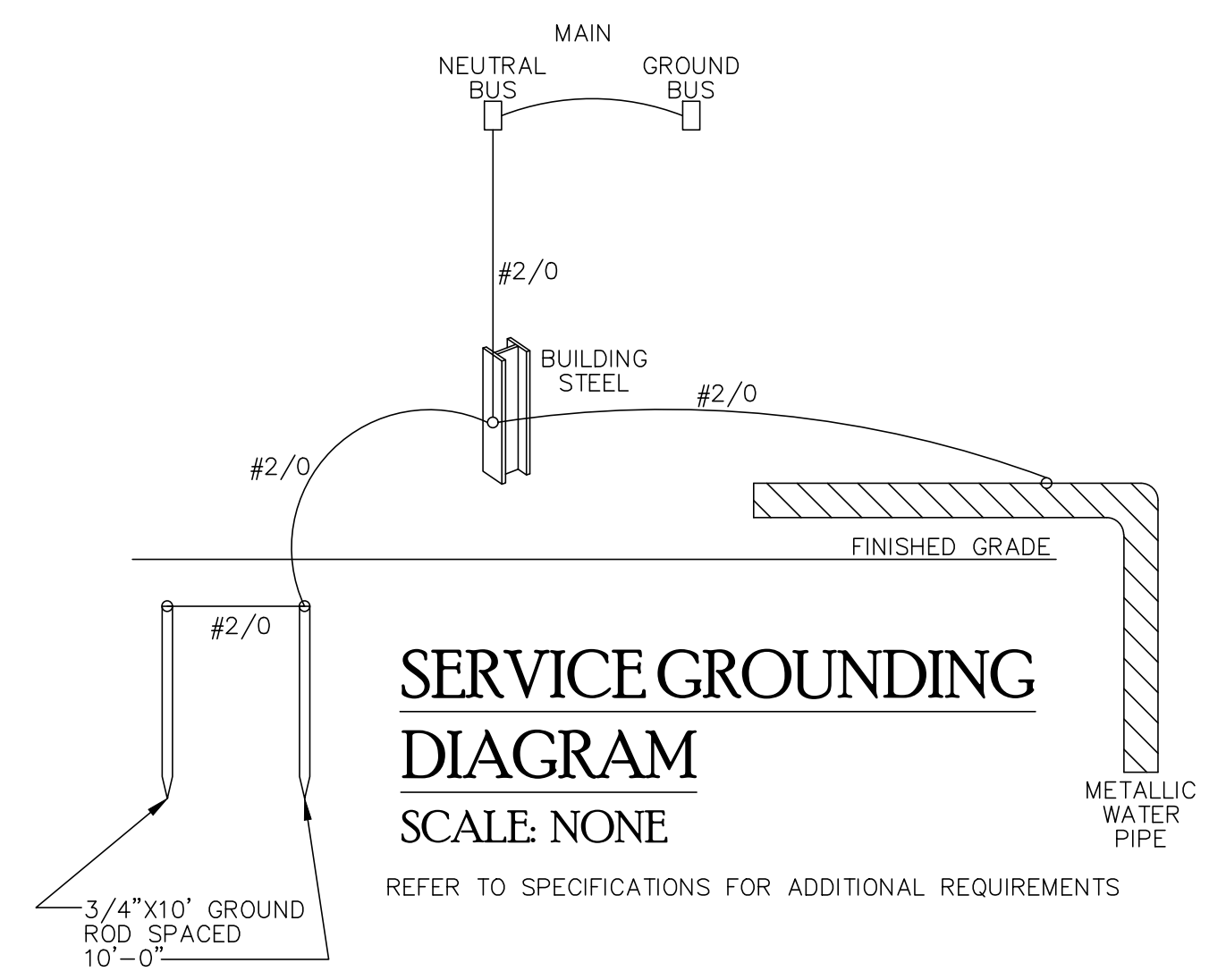
GENERAL NOTES:

- FOR 120V CIRCUITS, WHEN BRANCH CIRCUIT LENGTH EXCEEDS 75 FEET FROM PANEL, WIRING SHALL BE INCREASED TO #10 AWG WITH #10 AWG GROUND. WHEN BRANCH CIRCUIT LENGTH EXCEEDS 150 FEET FROM PANEL, BRANCH WIRING SHALL BE INCREASED TO #8 AWG WITH #8 AWG GROUND.

FIXTURE, SWITCHING & DEVICE SUFFIXES:
E = EXISTING
N = NEW
R = RELOCATE. EXTEND/MODIFY EXISTING CONDUCTORS AS REQUIRED AND RECONNECT. REPLACE DEVICE IF REQUIRED.



**SMOKE DUCT DETECTOR ALARM/
AHU SHUT-DOWN WIRING DIAGRAM**
NO SCALE
NOTE: REQUIRED FOR AIR HANDLING UNITS WHERE SUPPLY AIR IS 2,000 CFM OR GREATER.

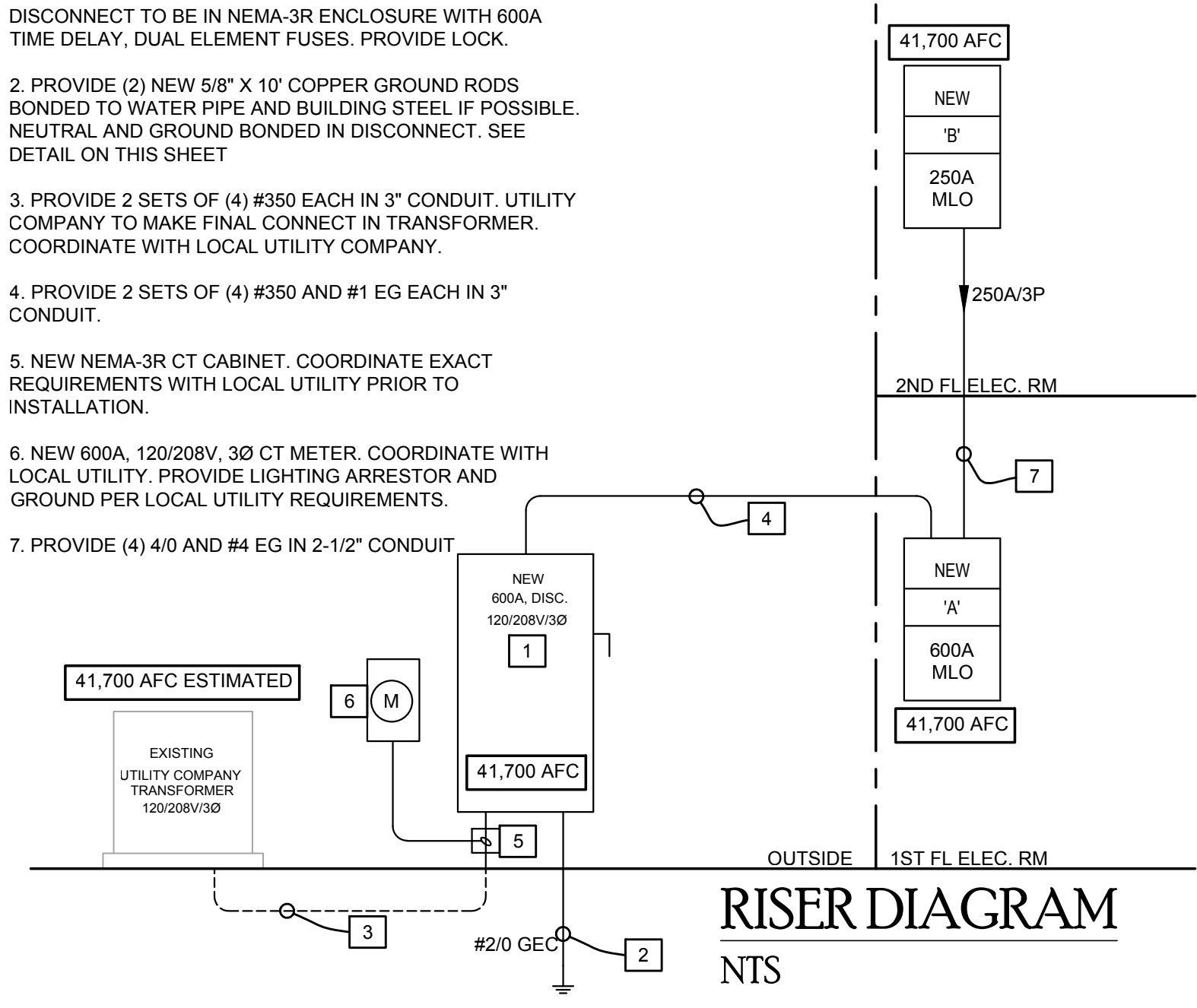


**SERVICE GROUNDING
DIAGRAM**
SCALE: NONE
REFER TO SPECIFICATIONS FOR ADDITIONAL REQUIREMENTS

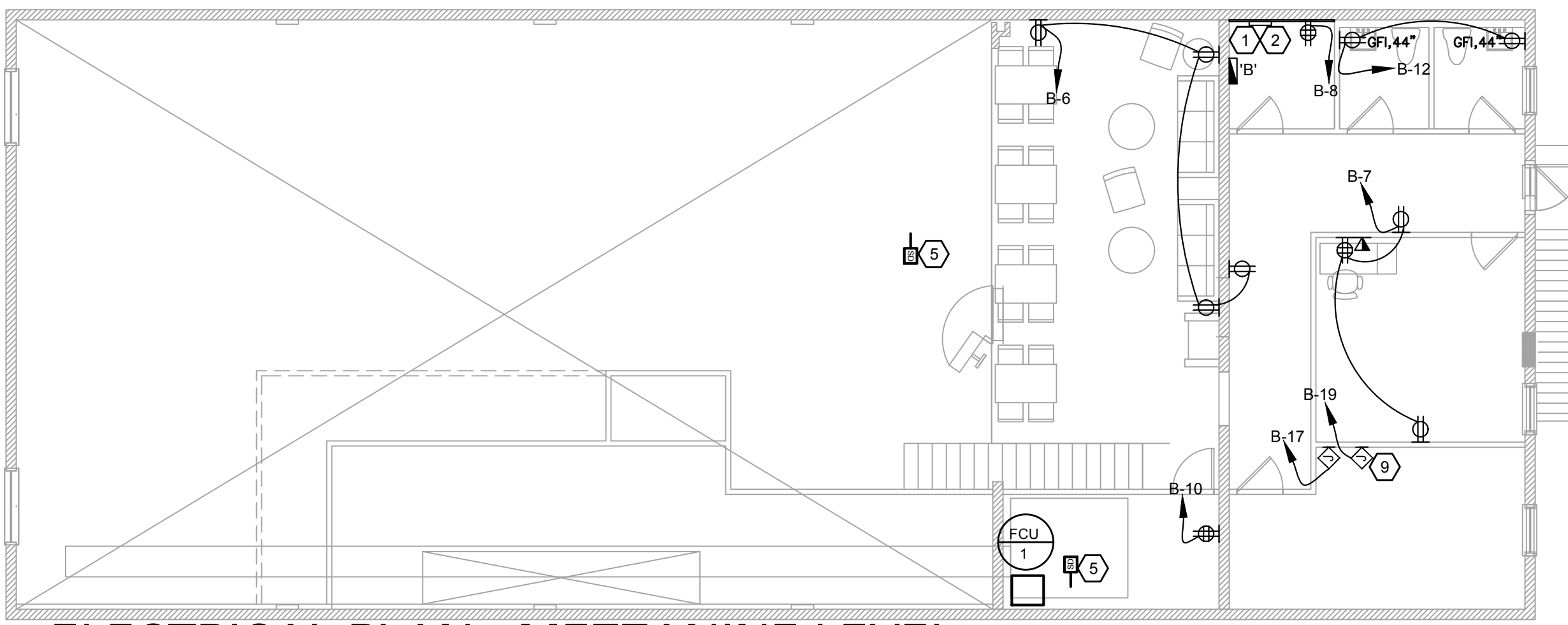
SPECIAL NOTE:
AMP INTERRUPTING CURRENT (AIC) RATING FOR MAIN, WIREWAY AND ELECTRICAL PANELS IS ESTIMATED BASED ON AN ASSUMED AVAILABLE FAULT CURRENT (AFC) AT THE UTILITY TRANSFORMER OF 41,700A. PLEASE VERIFY AFC WITH LOCAL UTILITY COMPANY PRIOR TO INSTALLATION.

RISER NOTES

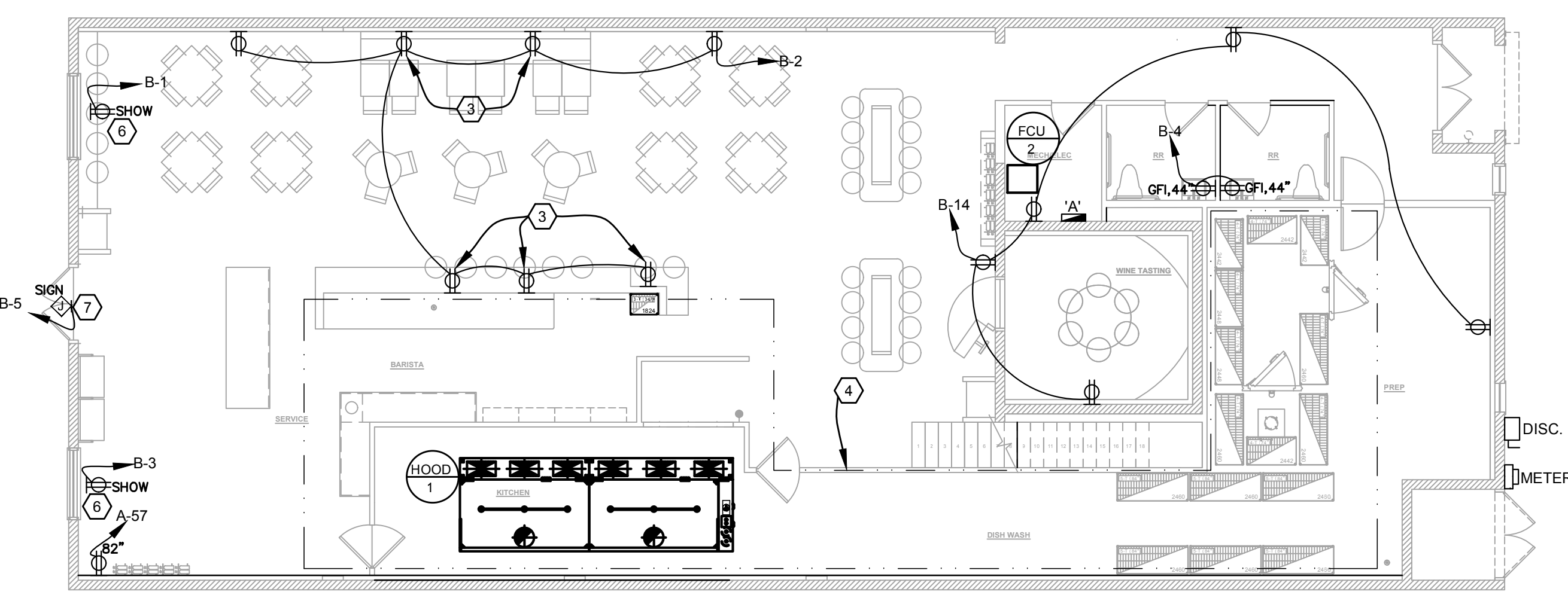
- NEW SERVICE ENTRANCE RATED 600A DISCONNECT. DISCONNECT TO BE IN NEMA-3R ENCLOSURE WITH 600A TIME DELAY, DUAL ELEMENT FUSES. PROVIDE LOCK.
- PROVIDE (2) NEW 5/8" X 10" COPPER GROUND RODS BONDED TO WATER PIPE AND BUILDING STEEL IF POSSIBLE. NEUTRAL AND GROUND BONDED IN DISCONNECT. SEE DETAIL ON THIS SHEET.
- PROVIDE 2 SETS OF (4) #350 EACH IN 3" CONDUIT. UTILITY COMPANY TO MAKE FINAL CONNECT IN TRANSFORMER. COORDINATE WITH LOCAL UTILITY COMPANY.
- PROVIDE 2 SETS OF (4) #350 AND #1 EG EACH IN 3" CONDUIT.
- NEW NEMA-3R CT CABINET. COORDINATE EXACT REQUIREMENTS WITH LOCAL UTILITY PRIOR TO INSTALLATION.
- NEW 600A, 120/208V, 30 CT METER. COORDINATE WITH LOCAL UTILITY. PROVIDE LIGHTING ARRESTOR AND GROUND PER LOCAL UTILITY REQUIREMENTS.
- PROVIDE (4) 4/0 AND #4 EG IN 2-1/2" CONDUIT



RISER DIAGRAM
NTS



ELECTRICAL PLAN - MEZZANINE LEVEL
SCALE: 1/8" = 1'-0"



ELECTRICAL PLAN - FIRST FLOOR
SCALE: 1/8" = 1'-0"

Rev	Date	By	Description
01	1/22/22	WG	PRENGING SET
02			
03			
04			
05			
06			
07			
08			
09			
10			



Project Number: 22.3024.00
 Drawn By:
 Checked By: KJK
 Project Name:
 SOUTHERN GROUNDS & CO
 556 CENTRAL AVE
 ST. PETERSBURG, FL
 Drawing Name:
 ELECTRICAL PLAN

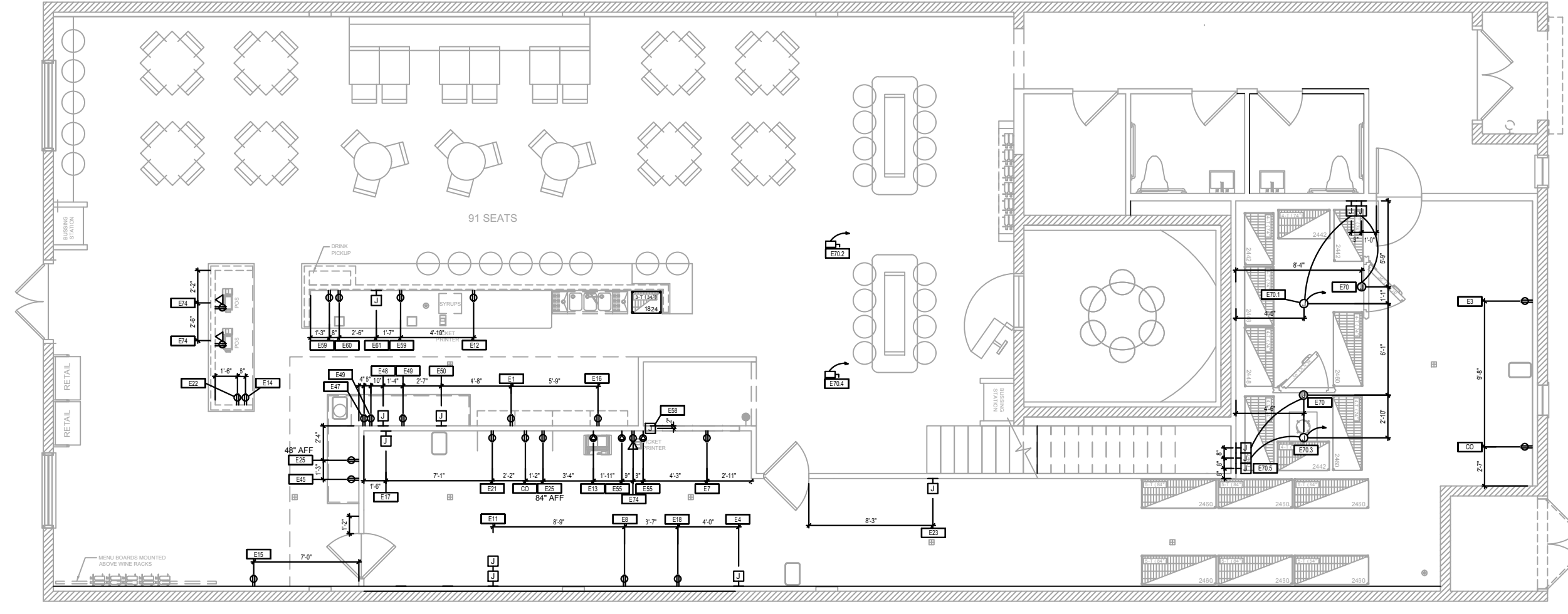


© 2022 Group 4 Design, Inc. All rights reserved. THESE DRAWINGS AND MATERIALS ARE THE PROPERTY OF GROUP 4 DESIGN, INC. AND ARE NOT TO BE REPRODUCED, ALTERED, COPIED, OR TRANSMITTED IN ANY FORM OR BY ANY MEANS, ELECTRONIC OR MECHANICAL, INCLUDING PHOTOCOPYING, RECORDING, OR BY ANY INFORMATION STORAGE AND RETRIEVAL SYSTEM, WITHOUT THE WRITTEN PERMISSION AND CONSENT OF GROUP 4 DESIGN, INC.

Not Valid for Permitting Without Copy Signatures, Seal and Date

ELECTRICAL SYMBOLS LEGEND			
SYMBOLS	LEGEND	SYMBOLS	LEGEND
	LIGHTING FIXTURE		TRANSFORMER - AS NOTED
	WALLWASHER LIGHT FIXTURE		WALL COMMUNICATION OUTLET, PROVIDE MIN. 1" CONDUIT WITH PULL WIRES TO ABOVE CEILING (TELE/DATA/CABLE TV)
	FLUORESCENT LIGHTING FIXTURE		FLOOR TELE/DATA BOX
	FLUORESCENT STRIP LIGHTING FIXTURE		FIREMAN'S PHONE JACK
	EXIT SIGN FIXTURE - ARROWS AS INDICATED		CARD READER
	FIXTURES ON EMERGENCY CIRCUIT OR FURNISHED W/ BATTERY PACK		PLUG MOLD
	REMOTE EMERGENCY LIGHT W/BATTERY PACK		MAGNETIC DOOR HOLDER (REF. HARDWARE SPEC'S)
	S.P.S.T. TOGGLE SWITCH		FIRE ALARM SMOKE DETECTOR - CEILING/WALL MOUNTED
	THREE-WAY TOGGLE SWITCH / FOUR-WAY TOGGLE SWITCH		FIRE ALARM HEAT DETECTOR
	SWITCH WITH PILOT LIGHT		FIRE ALARM SIGNAL LIGHT - MTD. 82"A.F.F.
	DIMMER SWITCH		FIRE ALARM SPRINKLER FLOW SWITCH
	DUPLEX RECEPTACLE OUTLET		FIRE ALARM SPRINKLER VALVE TAMPER SWITCH
	DUPLEX RECEPTACLE OUTLET - MTD. ABOVE COUNTER		FIRE ALARM SMOKE DETECTOR - DUCT MOUNTED
	QUADPLEX RECEPTACLE OUTLET		FIRE ALARM SPEAKER, CLG. MTD.
	SINGLE RECEPTACLE OUTLET MTD. AS NOTED		FIRE ALARM COMBINATION AUDIO/VISUAL DEVICE WALL MTD. 82"A.F.F.
	FLOOR OUTLET WITH RECEPTACLE		"H" INDICATES HORN, "S" INDICATES SPEAKER
	DEDICATED DUPLEX OUTLET		MANUAL STATION 48"A.F.F.
	SPECIAL PURPOSE OUTLET - AS NOTED		RELAY
	JUNCTION BOX - CEILING MOUNTED		DO NOT USE ELEVATOR WARNING LIGHT (IF B. F. A. CONTRACTOR)
	JUNCTION BOX - WALL MOUNTED		MOTORIZED DAMPER
	FLOOR JUNCTION BOX		SMOKE DAMPER
	FURNITURE SYSTEM POWER POLE		ABANDONED
	FURNITURE SYSTEM WALL POWER FEED		ABOVE FINISHED FLOOR OR GRADE
	FURNITURE SYSTEM WALL TELE/DATA		CEILING
	DISCONNECT SWITCH - 30A/3NF U.O.N.		EXISTING
	FUSED DISCONNECT SWITCH		ELECTRIC DRINKING FOUNTAIN
	ENCLOSED CIRCUIT BREAKER		GROUND FAULT INTERRUPTING
	277/480 VOLT PANELBOARD		ISOLATED GROUND
	120/208 VOLT PANELBOARD		LIGHTING
	MOTOR		NON-FUSED
	CONDUIT CONCEALED IN WALL OR OVERHEAD		ON CENTER
	CONDUIT CONCEALED IN FLOOR OR UNDERGROUND		RELOCATED
	CONDUIT RUN EXPOSED		RECEPTACLE
	CONDUIT WHIP UNDER RAISED FLOOR		SPARE
	TICK MARKS INDICATE #12 CONDUCTORS OR AS NOTED		UNLESS OTHERWISE NOTED
	GROUND CONNECTION AS NOTED		INDICATES WEATHERPROOF DEVICE OR PLATE
	CONDUIT STUB-UP LOCATION		FIRE ALARM CONTROL PANEL
	CONDUIT STUB-DOWN LOCATION		FIRE ALARM ANNUNCIATOR PANEL
	SPECIAL PURPOSE CONDUIT SEE PLANS FOR NOTES		SIGNALING LINE CIRCUIT
	MOTOR STARTER - MANUAL		NOTIFICATION APPLIANCE CIRCUIT
	MOTOR STARTER - MAGNETIC		FIRE ALARM KNOX BOX

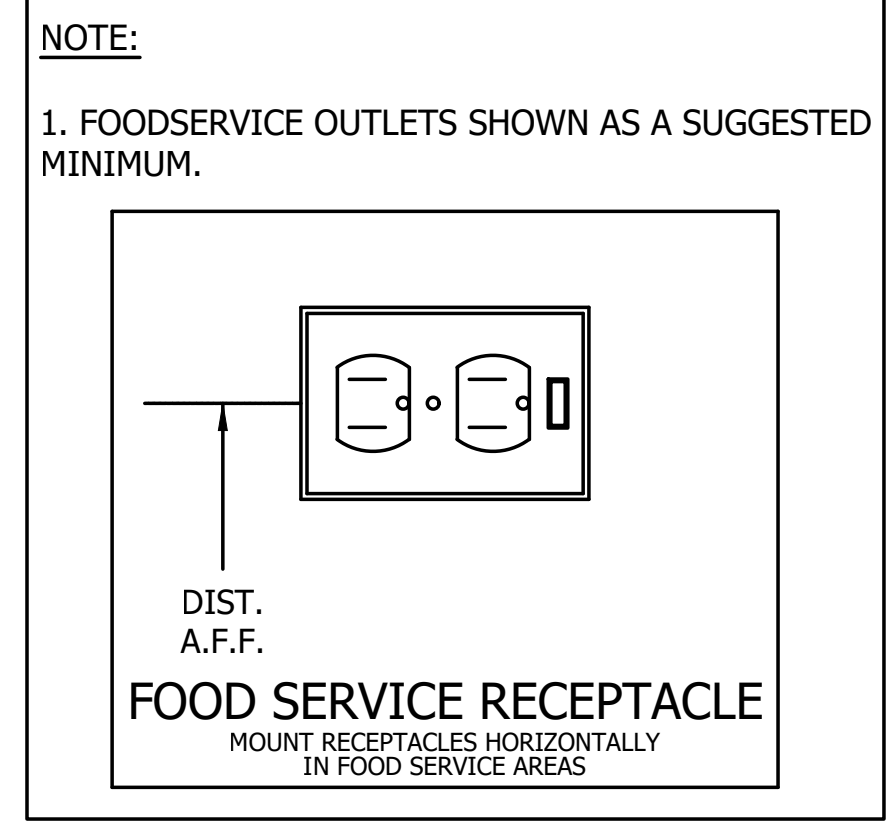
NOTE: NOT ALL SYMBOLS ARE USED.



ELECTRICAL FOOD SERVICE PLAN
SCALE: 1/8" = 1'-0"



- SPECIAL ELECTRICAL KITCHEN NOTES:**
- COORDINATE ALL ELECTRICAL REQUIREMENTS AND CONNECTIONS WITH KITCHEN EQUIPMENT VENDOR. REFER TO KITCHEN EQUIPMENT VENDOR DRAWINGS FOR ADDITIONAL INFORMATION.
 - ALL DEDICATED KITCHEN EQUIPMENT RECEPTACLES SHALL BE LABELED ACCORDINGLY.
 - THE BREAKER(S) FOR ANY ELECTRICAL EQUIPMENT WHICH IS LOCATED UNDER THE EXHAUST HOOD SHALL BE GFI BREAKER TYPE. ROUTE THROUGH CONTACTOR, COIL ON CONTACTOR CONTROLLED VIA ANSUL SYSTEM. WHEN ANSUL SYSTEM ACTIVATED, COIL OPENS AND EQUIPMENT UNDER HOOD IS DE-ENERGIZED.
 - ALL KITCHEN RECEPTACLES ARE GFI. IF GFI RECEPTACLE IS BLOCKED BY PIECE OF EQUIPMENT OR OTHER FIELD CONDITIONS, A GFI RATED BREAKER SHALL BE INSTALLED.
 - ALL 125 VOLT, SINGLE-PHASE, 15 AND 20 AMPS RECEPTACLES INSTALLED IN THE LOCATIONS SPECIFIED IN 210.8 (B) (1) THROUGH (8) SHALL HAVE GROUND FAULT CIRCUIT-INTERRUPTER PROTECTION FOR PERSONNEL.



DESCRIPTION	ELECTRICAL CHARACTERISTICS				CIRCUIT DESIGNATION	BREAKER AMPS	FEEDER	EQUIP. GROUNDED	CONDUIT	CONNECTION TYPE	ROUGH-IN AFF	REMARKS
	VOLTS	PHASE	KW	HP								
E1 DRAFT BEER COOLER	120				A-2	20	1	(2)#12	#12	1/2"	PLUG	24"
E4 KETTLE STEAM	208	1			A-4.6	40	2	(3)#8	#10	1"	DIRECT	24"
E7 REFRIGERATOR	120				A-10	20	1	(2)#12	#12	1/2"	PLUG	24"
E8 REFRIGERATOR	120				A-44	20	1	(2)#12	#12	1/2"	PLUG	24"
E11 OVEN	208	1			A-12.14	30	2	(3)#10	#10	3/4"	DIRECT	24"
E11 OVEN	208	1			A-18.20	30	2	(3)#10	#10	3/4"	DIRECT	48"
E12 REFRIGERATOR	120				A-24	20	1	(2)#12	#12	1/2"	PLUG	24"
E13 GRILL PRESS	208	1			A-26.28	20	2	(3)#12	#12	1/2"	PLUG	48"
E14 FRIDGE CASE	120				A-30	20	1	(2)#12	#12	1/2"	PLUG	24"
E15 REFRIGERATOR	120				A-32	20	1	(2)#12	#12	1/2"	PLUG	24"
E16 COOLER	120				A-34	20	1	(2)#12	#12	1/2"	PLUG	24"
E17 ICE MAKER	120				A-36	20	1	(2)#12	#12	1/2"	DIRECT	72"
E18 FOOD PAN WARMER	120				A-38	20	1	(2)#12	#12	1/2"	PLUG	24"
E20 BACK BAR COOLER	120				A-42	20	1	(2)#12	#12	1/2"	PLUG	24"
E21 SLICER	120				A-48	20	1	(2)#12	#12	1/2"	PLUG	48"
E22 COUNTERTOP CASE	120				A-1	20	1	(2)#12	#12	1/2"	PLUG	24"
E23 WAREWASHER LOW TEMP	120				A-3	20	1	(2)#12	#12	1/2"	DIRECT	66"
E25 MICROWAVE	120				A-5	20	1	(2)#12	#12	1/2"	PLUG	48"
E25 MICROWAVE	120				A-7	20	1	(2)#12	#12	1/2"	PLUG	84"
E45 DIPPERWLL	120				A-9	20	1	(2)#12	#12	1/2"	PLUG	24"
E47 BLENDER	120				A-11	20	1	(2)#12	#12	1/2"	PLUG	48"
E48 COFFEE BREWER	208	1			A-13.15	30	2	(3)#10	#10	3/4"	VERIFY	48"
E49 COFFEE GRINDER	120				A-17	20	1	(2)#12	#12	1/2"	PLUG	48"
E50 ICED TEA BREWER	120				A-19	20	1	(2)#12	#12	1/2"	VERIFY	48"
E54 REFRIGERATOR	120				A-19	20	1	(2)#12	#12	1/2"	PLUG	24"
E55 CONVEYOR TOASTER	208	1			A-21.23	20	2	(3)#12	#12	1/2"	PLUG	48"
E58 HEAT LAMP	120				A-25	20	1	(2)#12	#12	1/2"	VERIFY	66"
E59 COFFEE GRINDER	120				A-27	20	1	(2)#12	#12	1/2"	PLUG	48"
E60 COFFEE TAMPER	120				A-29	20	1	(2)#12	#12	1/2"	PLUG	48"
E61 ESPRESSO MACHINE	208	1			A-31.33	30	2	(3)#10	#10	3/4"	PLUG	48"
E70 WALK-IN COOLER LIGHTS	120				A-35	20	1	(2)#12	#12	1/2"	DIRECT	CEILING
E70.1 WALK-IN COOLER EVAP	120				A-37	20	1	(2)#12	#12	1/2"	DIRECT	CEILING
E70.2 WALK-IN COOLER CONDENSER	208	1			A-39.41	20	2	(3)#12	#12	1/2"	DIRECT	ROOF
E70.3 WALK-IN FREEZER EVAP	208	1			A-43.45	20	2	(3)#12	#12	1/2"	DIRECT	CEILING
E70.4 WALK-IN FREEZER CONDENSER	208	1			A-47.49	20	2	(3)#12	#12	1/2"	DIRECT	ROOF
E70.5 DRAIN LINE HEAT TAPE	120				A-51	20	1	(2)#12	#12	1/2"	VERIFY	CEILING
E74 POS SYSTEM	120				A-53	20	1	(2)#12	#12	1/2"	PLUG	24"
CO CONV. OUTLET	120				A-50	20	1	(2)#12	#12	1/2"	PLUG	48"

No.	Date	By	Description	Issues and Revisions																
				1	2	3	4	5	6	7	8	9	10							
01	1/22/22	WJG	PRECING SET																	
02																				
03																				
04																				
05																				
06																				
07																				
08																				
09																				
10																				



Project Number: 22.3024.00

Drawn By: KJK

Checked By: KJK

Project Name:
SOUTHERN GROUNDS & CO
556 CENTRAL AVE
ST. PETERSBURG, FL

Drawing Name:
ELECTRICAL
FOOD SERVICE
PLAN



TE1.1

© 2022 Group 4 Design, Inc. All rights reserved. These drawings are the property of Group 4 Design, Inc. and are not to be reproduced, altered, copied in any form or manner, nor assigned to any party without first obtaining the express written permission and consent of Group 4 Design, Inc.

Not Valid for Permitting Without Copy Signatures, Seal and Date

MUA FAN INFORMATION - JOB#5739646

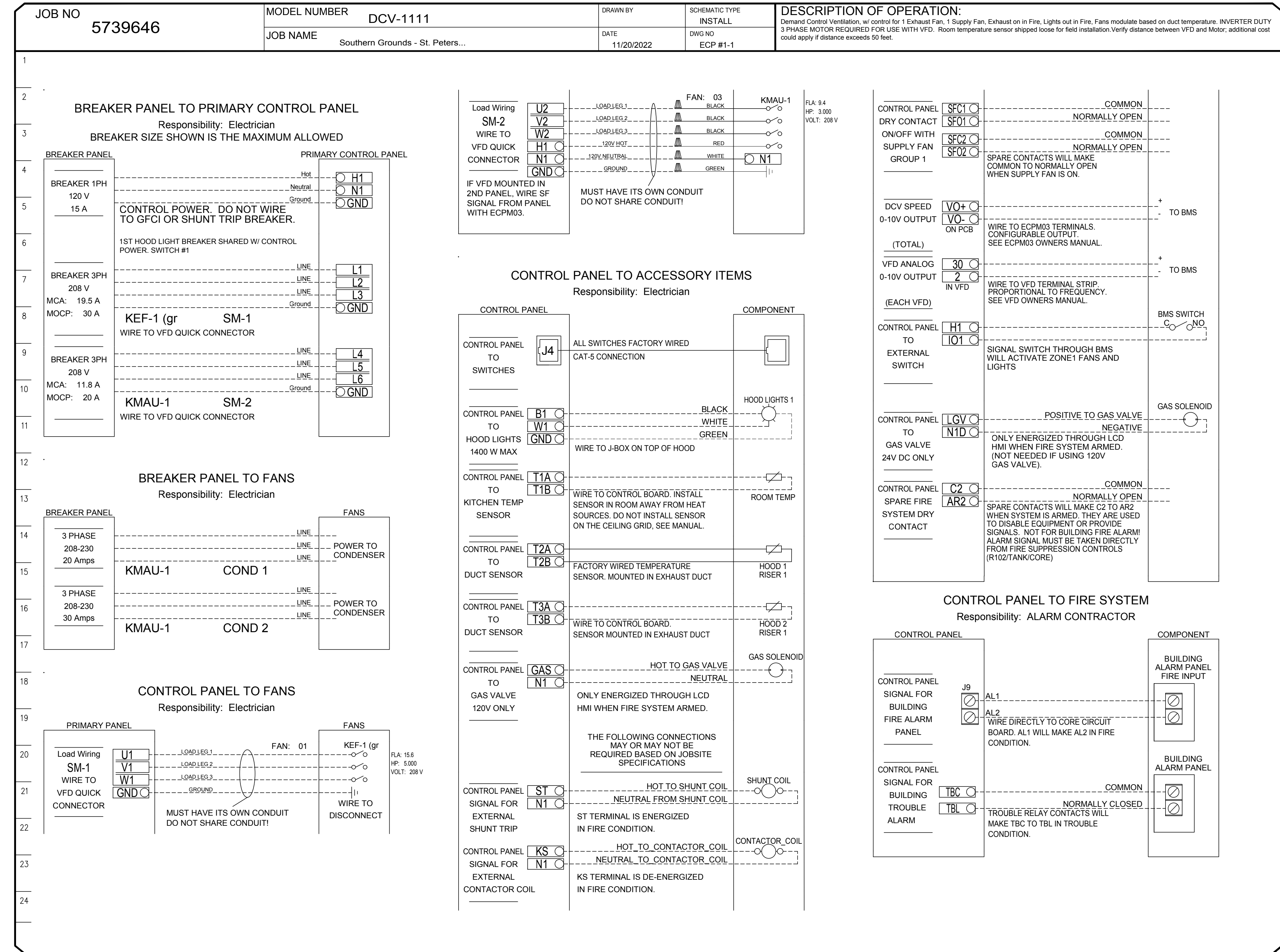
FAN UNIT NO	TAG	QTY	FAN UNIT MODEL #	BLOWER	HOUSING	MIN CFM	DESIGN CFM	ESP	RPM	MOTOR ENCL	HP	BHP	PHASE	VOLT	FLA	MCA	MOCP	WEIGHT (LBS)	SONES
3	KMAU-1	1	A2-20D-MPU	20MF-2-MOD	A2	2900	3700	1.000	1530	TEFC, PREMIUM	3.000	1.9790	3	208	9.4	11.8A	20A	1402	19.7

CONDENSER DETAILS

FAN UNIT NO	TAG	FAN UNIT MODEL #	CONDENSER NO	TONNAGE	VOLTAGE	PHASE	FREQUENCY	MCA	RLA	MAX FUSE SIZE	MIN WIRE SIZE	SEER
3	KMAU-1	A2-20D-MPU	1	3	208-230	3 PHASE	60 HZ	11.7 AMPS	8.46 AMPS	20 AMPS	14 AWG	14
			2	5	208-230	3 PHASE	60 HZ	21.5 AMPS	15.96 AMPS	30 AMPS	10 AWG	14

EXHAUST FAN INFORMATION - JOB#5739646

FAN UNIT NO	TAG	QTY	FAN UNIT MODEL #	MANUFACTURER	CFM	ESP	RPM	MOTOR ENCL	HP	BHP	PHASE	VOLT	FLA	DISCHARGE VELOCITY	WEIGHT (LBS)	SONES
1	KEF-1 (GREASE)	1	USBI24DD-RM	CAPTIVEAIRE	4500	2.500	1156	TEFC, PREMIUM	5.000	3.5610	3	208	15.6	1491 FPM	788	26.8
2	KEF-2 (DISH)	1	USBI11DD-RM	CAPTIVEAIRE	500	0.500	1087	TEAO-ECM	0.500	0.0830	1	115	6.3	533 FPM	180	4.3



Rev	Date	By	Description
01	11/21/22	WG	PRECING SET
02			
03			
04			
05			
06			
07			
08			
09			
10			
11			
12			
13			
14			
15			
16			
17			
18			



Project Number: 22.3024.00
 Drawn By:
 Checked By: KJK
 Project Name:
 SOUTHERN GROUNDS & CO
 556 CENTRAL AVE
 ST. PETERSBURG, FL
 Drawing Name:
 ELECTRICAL
 HOOD DETAILS



