

Good Morning Michael,

85-90k is for the equipment and installation. Otis does not build the hoistway. I can get you a budget proposal which will outline the scope of work requirements. Please advise.

Cordially,

Thomas Fletcher

Otis Elevator Company

New Equipment Sales

Cell: +1 512.993.8410

Email: Thomas.Fletcher@otis.com

6602 Executive Park Court N. #205

Jacksonville, FL 32216

[otis.com](https://www.otis.com) | [Twitter](#) | [Facebook](#) | [Instagram](#) | [YouTube](#) | [LinkedIn](#)

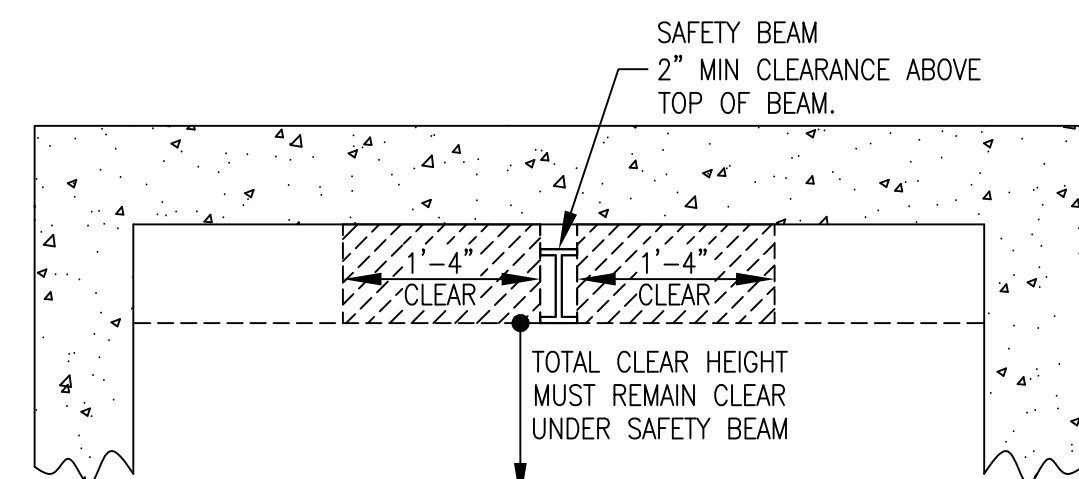
Data privacy is important. Here's our [policy](#).

This message may contain confidential and/or privileged information belonging to Otis Elevator Company, its parent, affiliates or third parties. If you are not the intended recipient please 1) do not disclose, copy, distribute or use this information, 2) notify the sender of the error by sending a return e-mail and 3) delete all copies from your computer.

From: architect200@comcast.net <architect200@comcast.net>

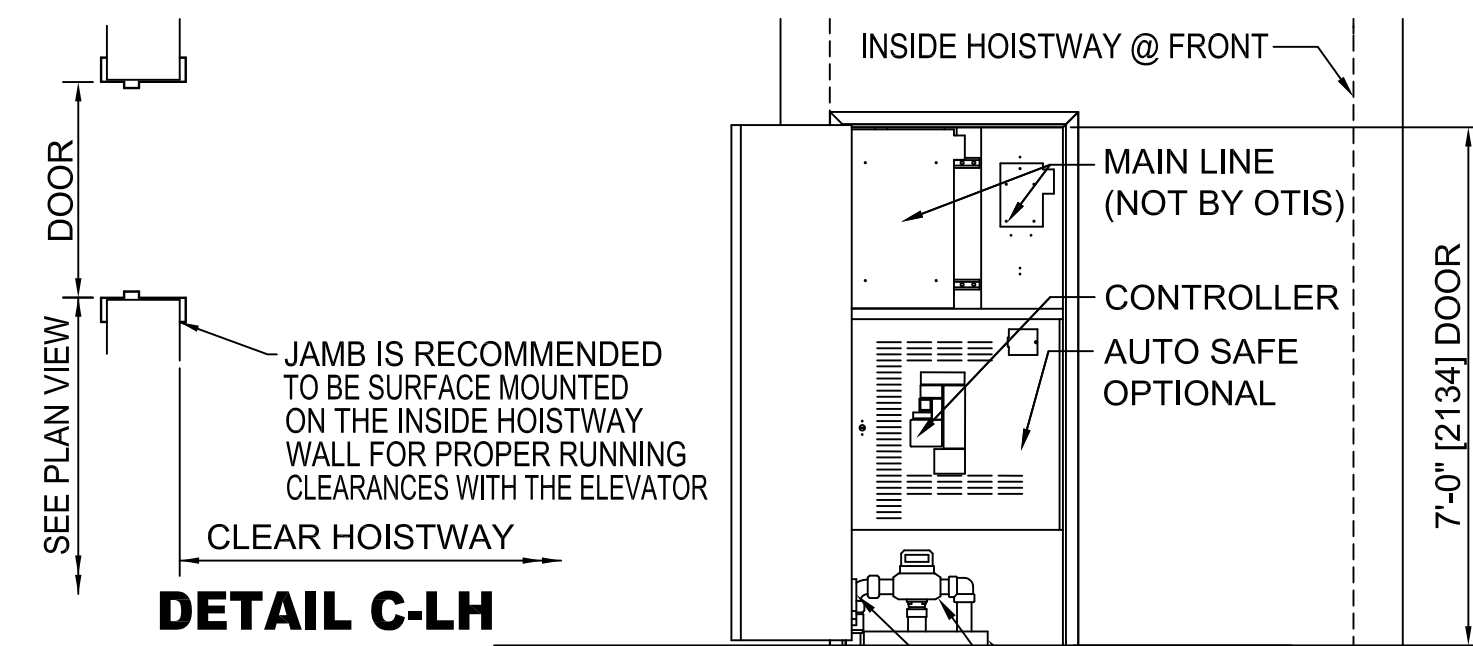
Sent: Friday, March 3, 2023 9:45 AM

To: Fletcher, Thomas <Thomas.Fletcher@otis.com>



OVERHEAD BEAM CLEARANCE

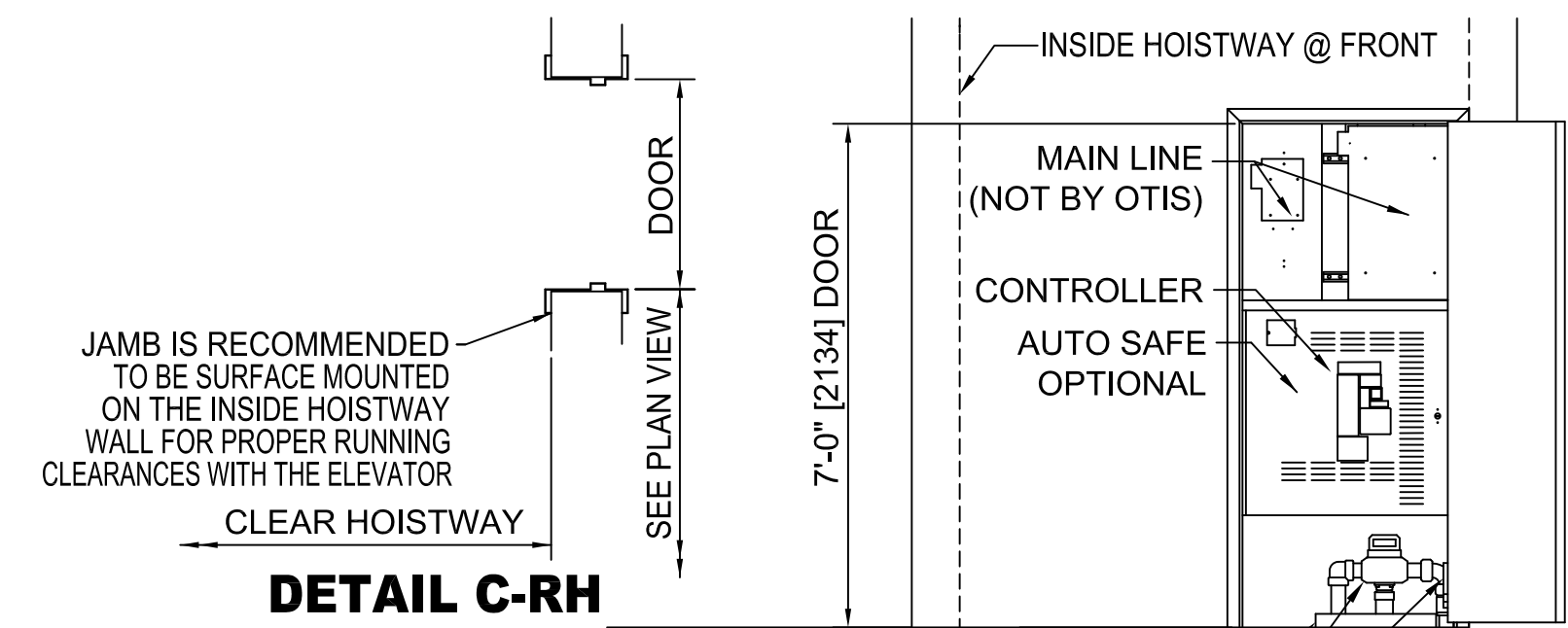
SEE NOTE 13 ON PWBO SHEET



DETAIL C-LH

CONTROLLER / MAIN LINE / TANK IN PIT @ BOTTOM LANDING REQUIREMENTS

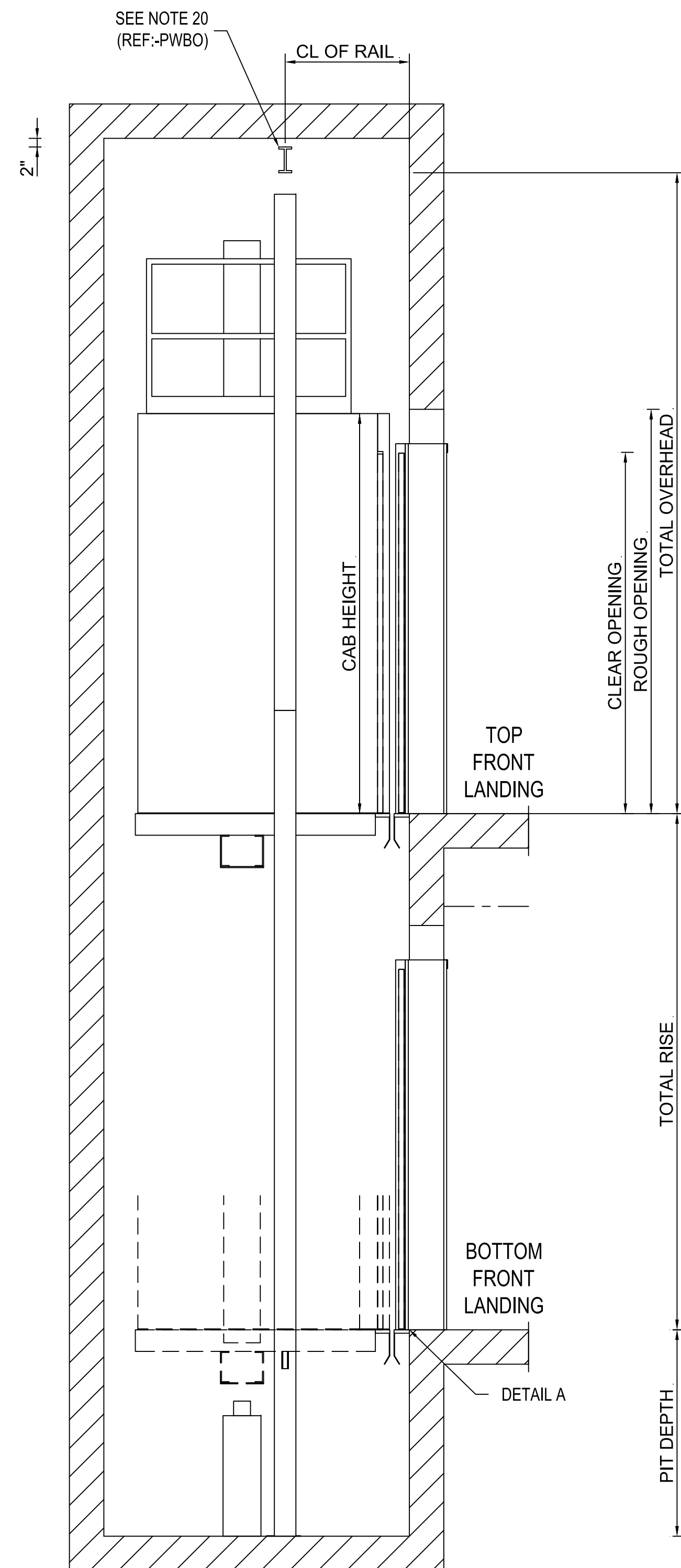
NOTE 18A
DOOR MUST BE LOCATED ON AN INTERIOR WALL OF THE BUILDING, IT CANNOT BE OPENED TO THE OUTSIDE OF A BUILDING.
NOTE 18B
CONTACT OTIS REPRESENTATIVE FOR MRL ACCESS DOOR LOCATION GUIDELINE DRAWINGS.



DETAIL C-RH

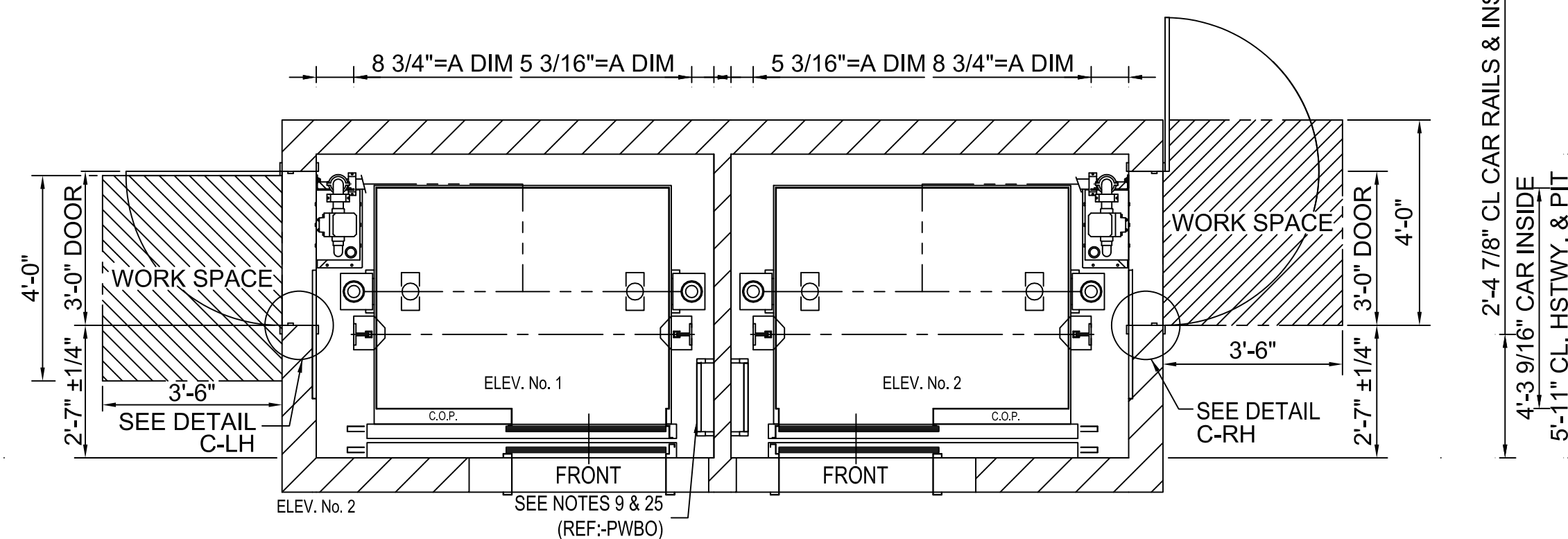
CONTROLLER / MAIN LINE / TANK IN PIT @ BOTTOM LANDING REQUIREMENTS

NOTE 18A
DOOR MUST BE LOCATED ON AN INTERIOR WALL OF THE BUILDING, IT CANNOT BE OPENED TO THE OUTSIDE OF A BUILDING.
NOTE 18B
CONTACT OTIS REPRESENTATIVE FOR MRL ACCESS DOOR LOCATION GUIDELINE DRAWINGS.



FRONT HOISTWAY SECTION

FOR MAX. SPACING BETWEEN INSERTS SEE RAIL FORCE DETAIL

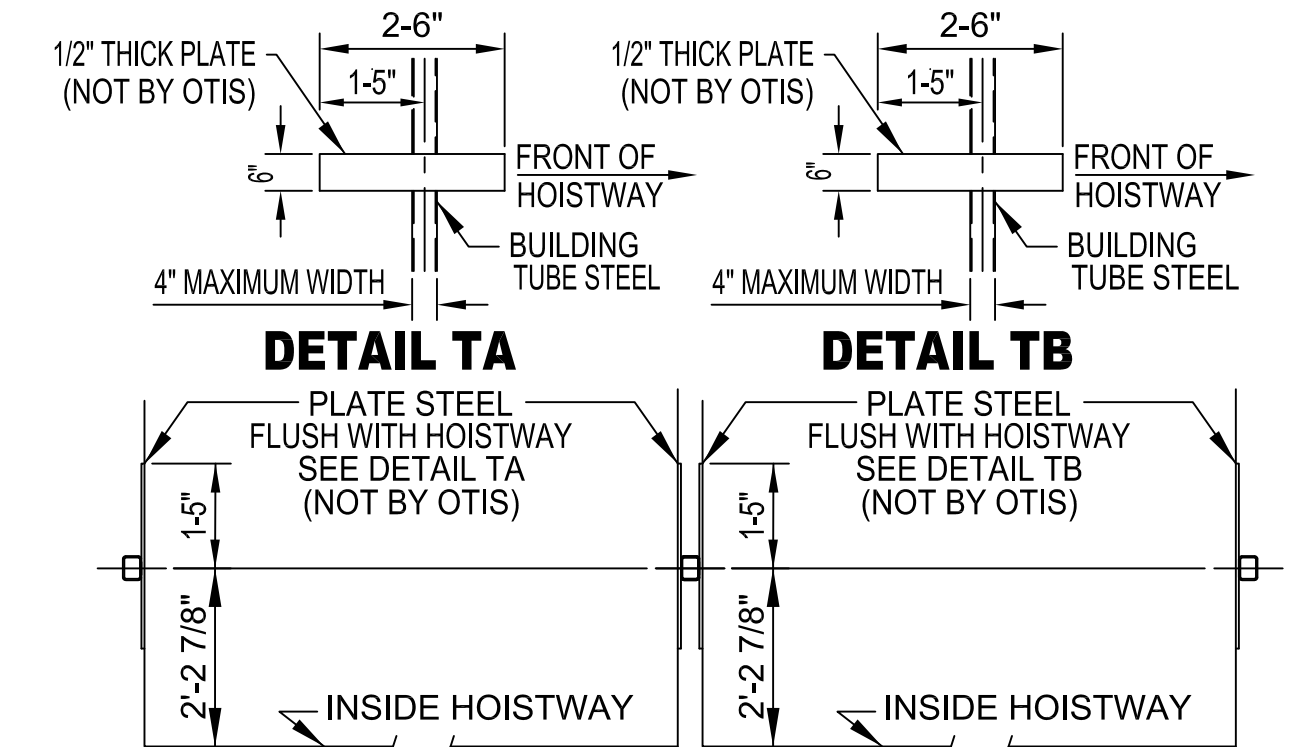
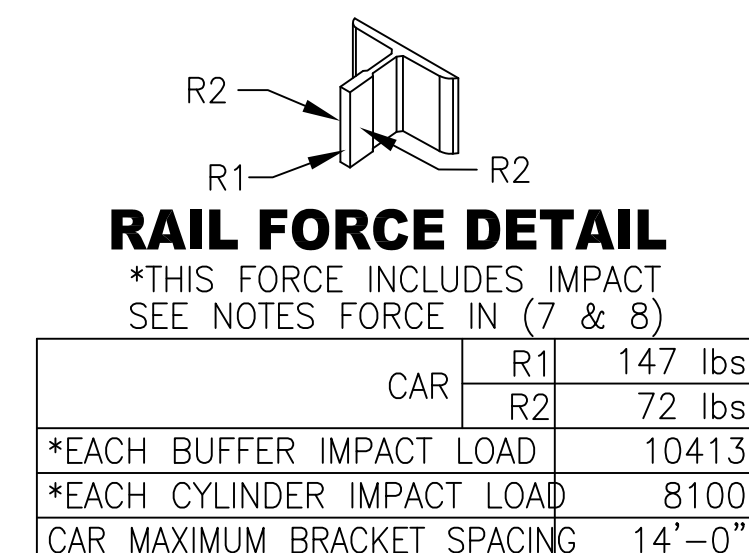


PLAN VIEW

4'-0 5/16" CL CAR	3'-9 3/4"	3'-0 CL. OP.	2'-2 1/2"	3'-0 CL. OP.	3'-9 3/4"
7'-9" R.O. @ MAIN FLOOR	7'-9" R.O. @ MAIN FLOOR	4'-8" R.O.	6 1/2"	4'-8" R.O.	2'-11 3/4"
5'-8 5/16" CAR INSIDE	5'-8 5/16" CAR INSIDE	9 3/16"=A DIM (IF APPLICABLE)		7'-9" CLEAR HOISTWAY & PIT	7'-9" CLEAR HOISTWAY & PIT
8 3/4"=A DIM	5 3/16"=A DIM	5 3/16"=A DIM	8 3/4"=A DIM	4" DIVIDER (NOTE 6)	
15'-10" TOTAL HOISTWAY & PIT					

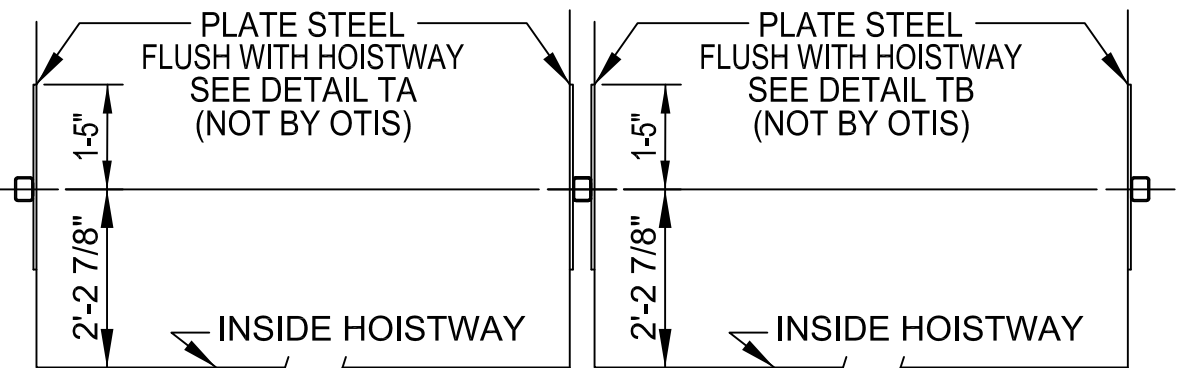
	1 STAGE		2 STAGE	
	CAB HEIGHT		CAB HEIGHT	
MAX. "TOTAL RISE" WITH 4'-0" PIT	13'-5"	21'-6"		
MAX. "TOTAL RISE" WITH 5'-0" PIT	14'-5"	26'-9"		
MAX. "TOTAL RISE" WITH 6'-0" PIT	15'-5"	NA		
MIN. "TOTAL OVERHEAD"	12'-0"	14'-0"	12'-5"	14'-5"
MAX. "TOTAL OVERHEAD"	2'-0" GREATER THAN THE MINIMUM OVERHEAD			

STANDARD WORKING RANGES



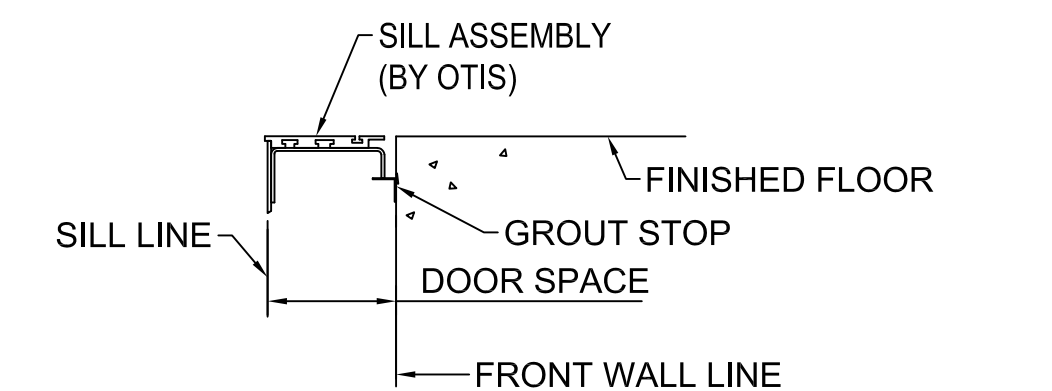
DETAIL TA

DETAIL TB



TUBE STEEL RAIL BRACKET SUPPORT

TUBE STEEL RAIL BRACKET SUPPORT



DETAIL "A" SILLSUPPORT

ADEQUATE SUPPORT AT ALL FASTENING POINTS OF ENTRANCE ASSEMBLY REQUIRED, MUST WITHSTAND A HORIZONTAL PULL-OUT FORCE OF 140 LBS. @ EA. FASTENING POINT (8 @ EA. ENTRANCE) INCLUDING SUPPORT FOR CENTER SILL SUPPORT BRACKET (NOT BY OTIS).

HydroFit® 2100 # 100 F.P.M.
 CAR TYPE = PASSENGER MACHINE LOCATION = MRL
 SEISMIC = ZONE0 GLASS BACK CAR = N

OTIS

REVISION DATE: 1/12/2020	SHEET 3 OF 3
DWG. NO.: HYD 2110-MRL	
BUILDING	
LOCATION	
CONT. WITH	
OWNER	
ARCHT.	
CONTRACT NO.	