

Architects Statement

Re: Lift Waiver, 602 East Union Street Jax FL 32206

The project alteration value is in the area of \$200.K to modify approx. 1250 gsf of interior area for an Art Gallery use.

The second floor is limited to art studios and a max occupancy of 50.

Given the excessive lift equipment cost, from 60 to 90K*, this is not a plausible installation at this time. We request a waiver from the ADA lift requirement due to out of scope costs, which do not include shaft/foundation work which I estimate to be another \$12,500. We will include 2 ADA restrooms and an accessible path to the principal street.

*attached & Otis Elevator estimates from Saveria

Please support this request, MWD

*attached estimates from Otis Elevator & Saveria

Michael Dunlap Architect

6-15-23

Good Morning Michael,

85-90k is for the equipment and installation. Otis does not build the hoistway. I can get you a budget proposal which will outline the scope of work requirements. Please advise.

Cordially,

Thomas Fletcher

Otis Elevator Company

New Equipment Sales

Cell: +1 512.993.8410

Email: Thomas.Fletcher@otis.com

6602 Executive Park Court N. #205

Jacksonville, FL 32216

[otis.com](https://www.otis.com) | [Twitter](#) | [Facebook](#) | [Instagram](#) | [YouTube](#) | [LinkedIn](#)

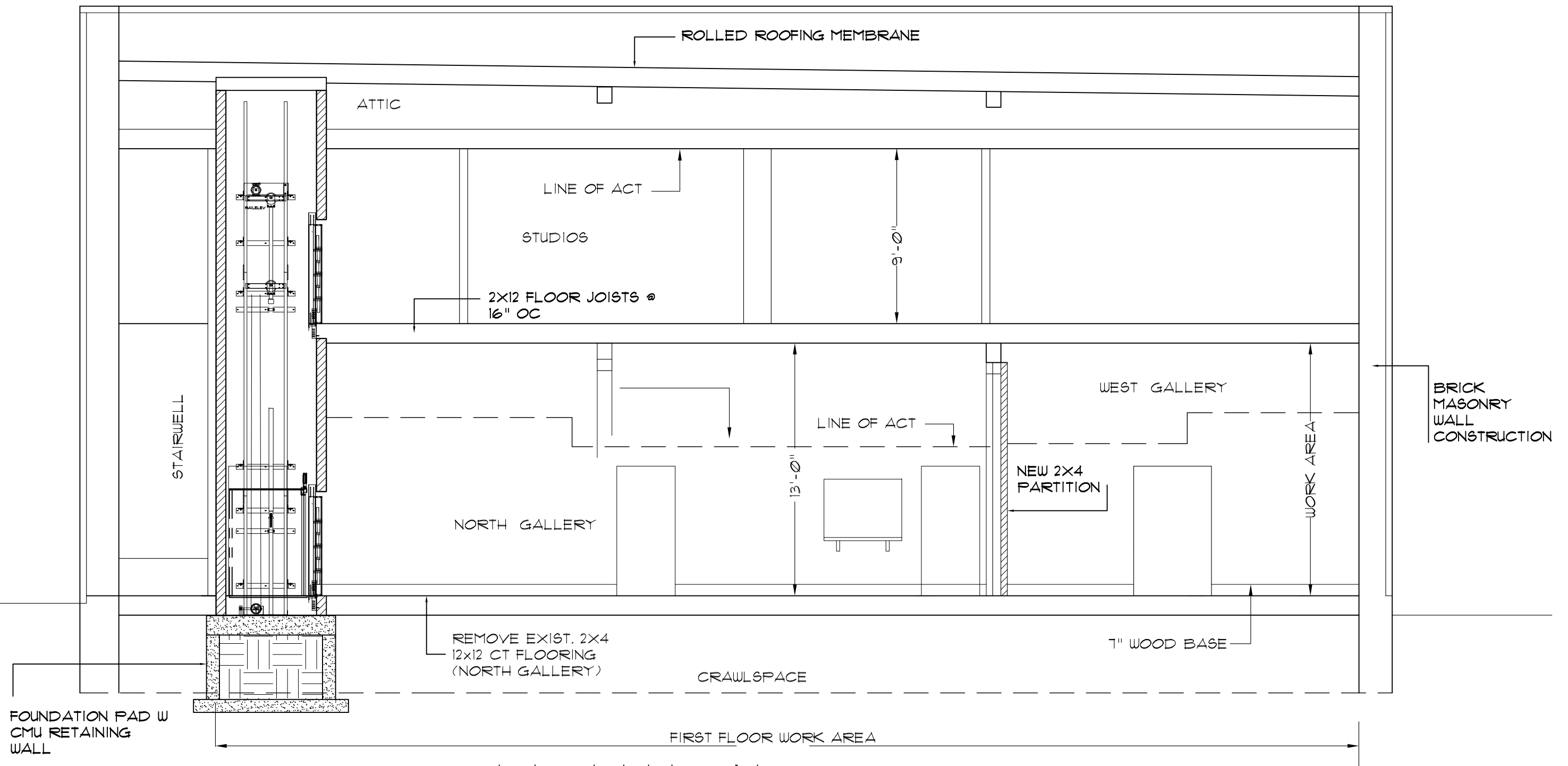
Data privacy is important. Here's our [policy](#).

This message may contain confidential and/or privileged information belonging to Otis Elevator Company, its parent, affiliates or third parties. If you are not the intended recipient please 1) do not disclose, copy, distribute or use this information, 2) notify the sender of the error by sending a return e-mail and 3) delete all copies from your computer.

From: architect200@comcast.net <architect200@comcast.net>

Sent: Friday, March 3, 2023 9:45 AM

To: Fletcher, Thomas <Thomas.Fletcher@otis.com>

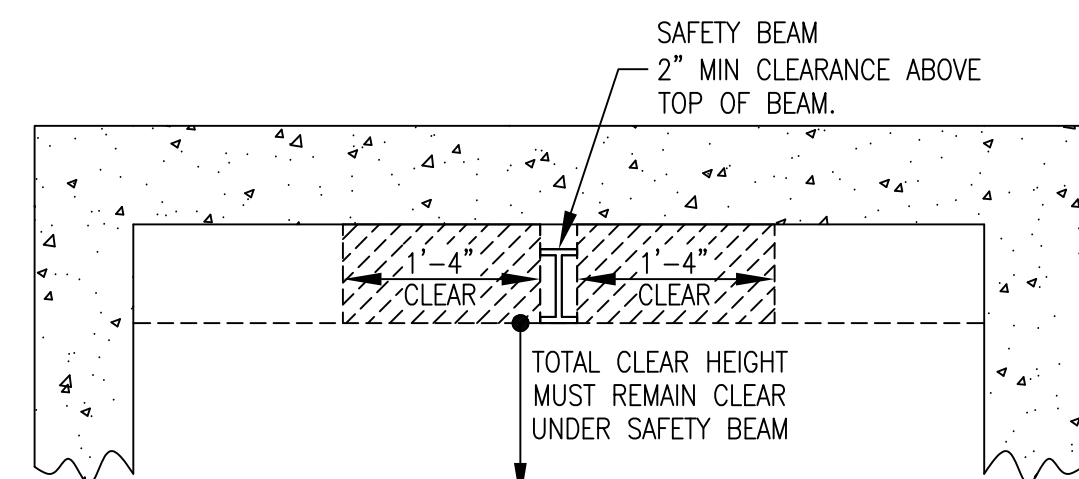


CONCEPT ELEVATOR CROSS SECTION

SCALE 1/4" = 1'-0"

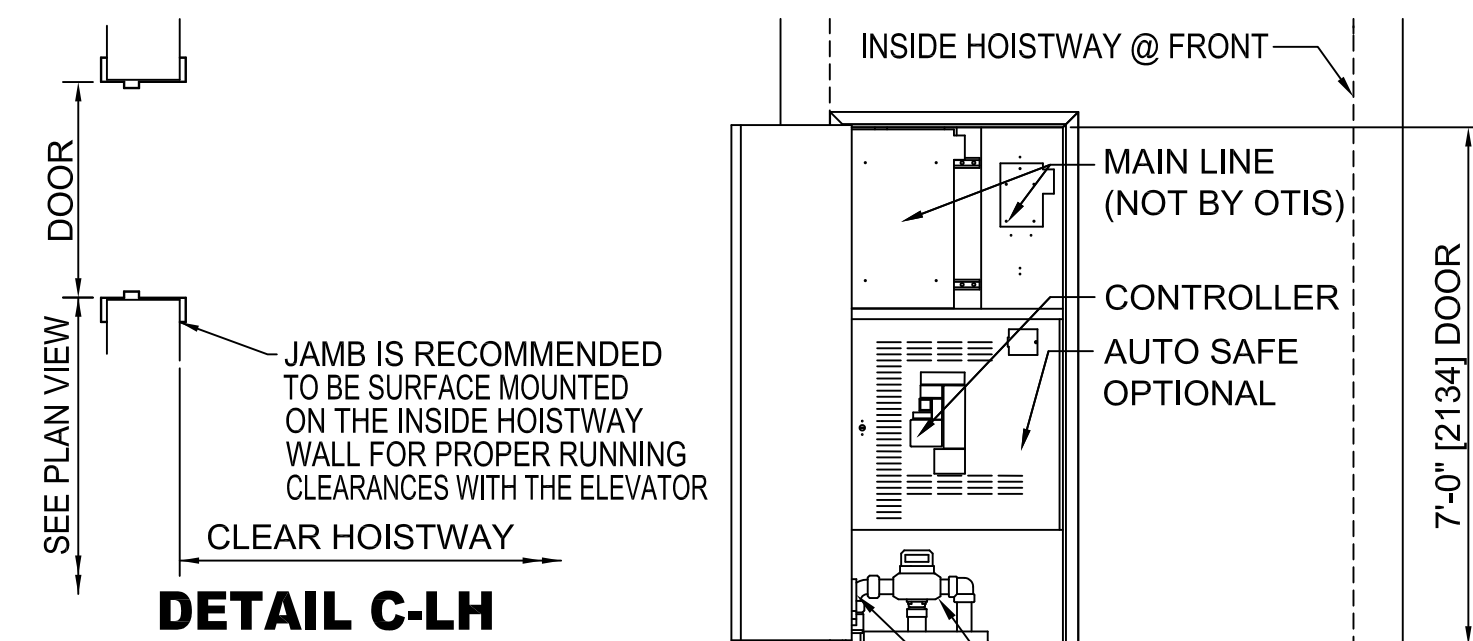
NOYAK CORNWELL BUILDING

MICHAEL DUNLAP ARCHITECT PA 5-26-23



OVERHEAD BEAM CLEARANCE

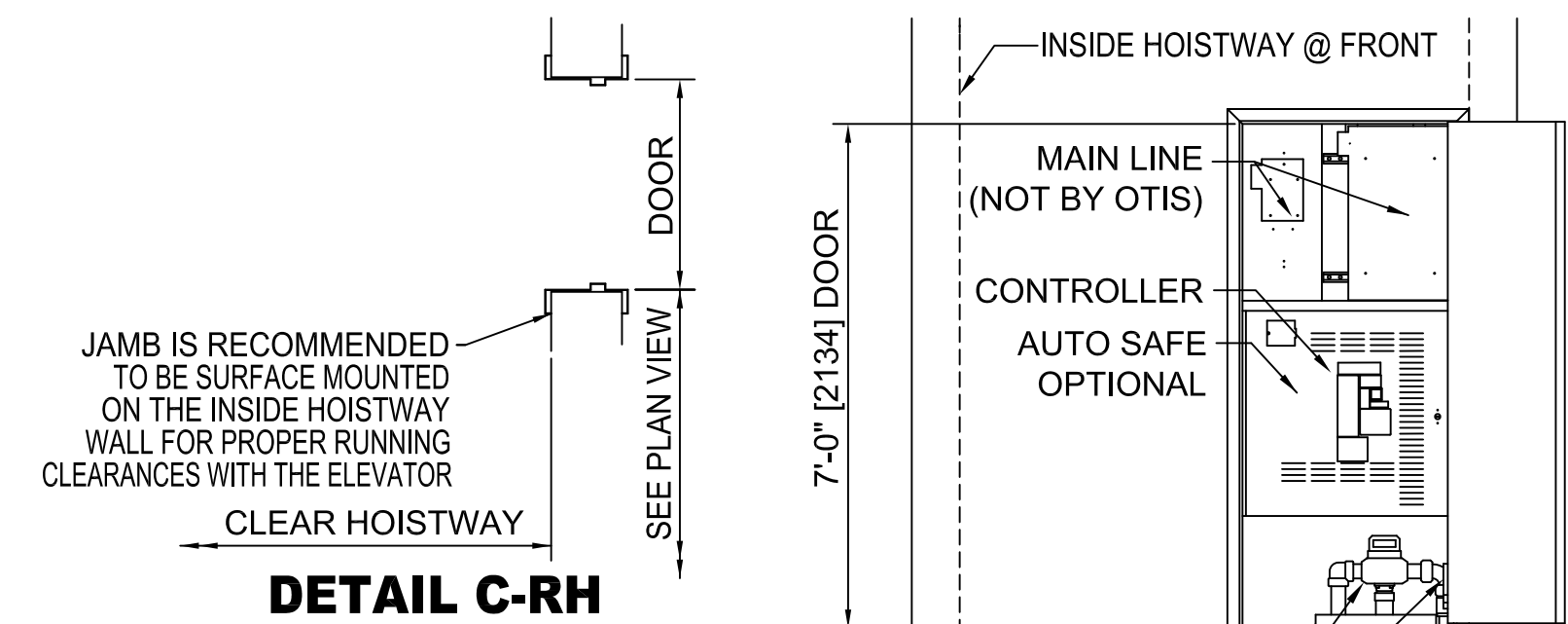
SEE NOTE 13 ON PWBO SHEET



DETAIL C-LH

CONTROLLER / MAIN LINE / TANK IN PIT @ BOTTOM LANDING REQUIREMENTS

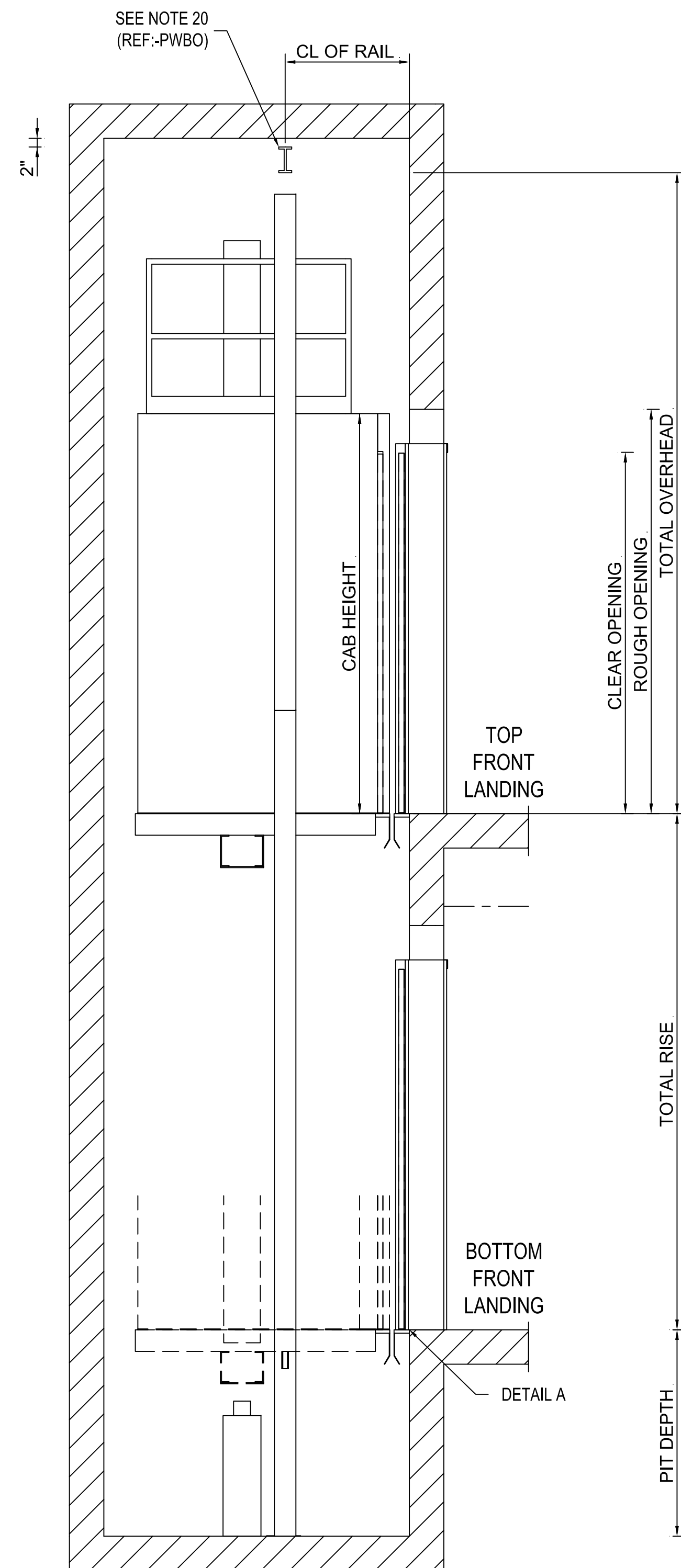
NOTE 18A
DOOR MUST BE LOCATED ON AN INTERIOR WALL OF THE BUILDING, IT CANNOT BE OPENED TO THE OUTSIDE OF A BUILDING.
NOTE 18B
CONTACT OTIS REPRESENTATIVE FOR MRL ACCESS DOOR LOCATION GUIDELINE DRAWINGS.



DETAIL C-RH

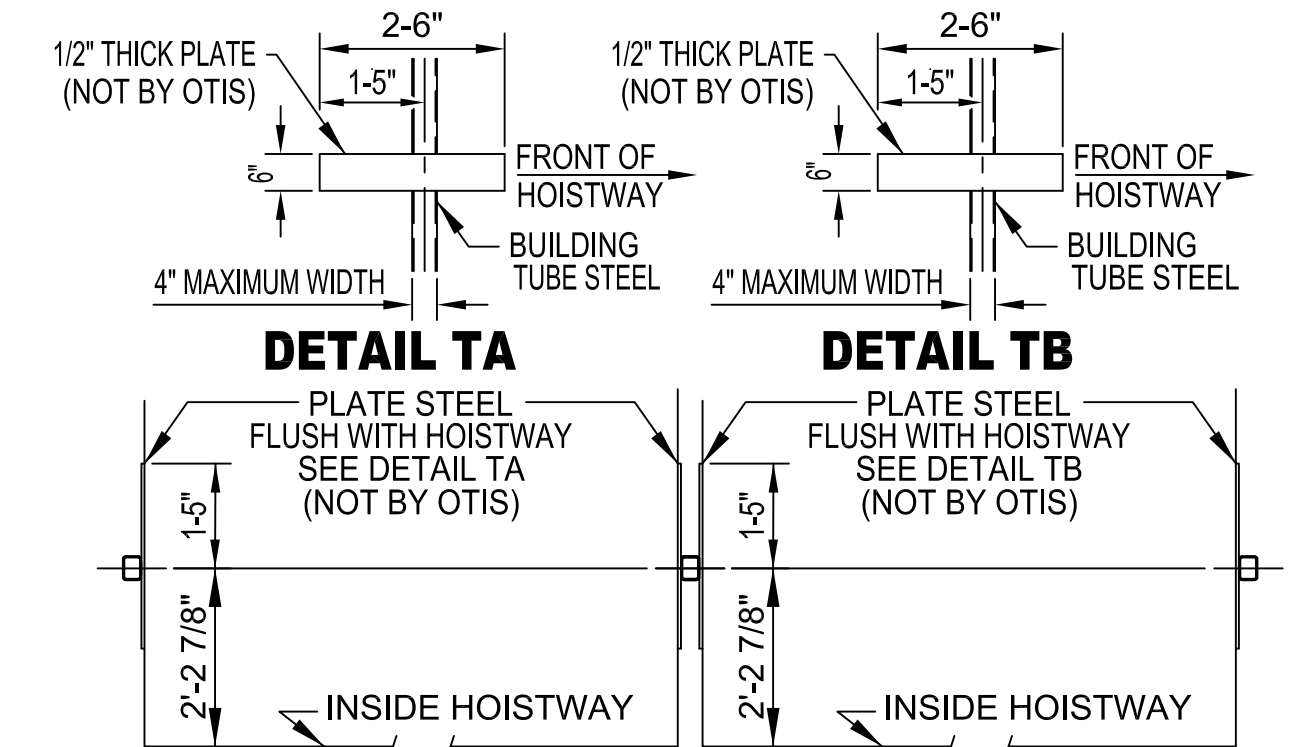
CONTROLLER / MAIN LINE / TANK IN PIT @ BOTTOM LANDING REQUIREMENTS

NOTE 18A
DOOR MUST BE LOCATED ON AN INTERIOR WALL OF THE BUILDING, IT CANNOT BE OPENED TO THE OUTSIDE OF A BUILDING.
NOTE 18B
CONTACT OTIS REPRESENTATIVE FOR MRL ACCESS DOOR LOCATION GUIDELINE DRAWINGS.



FRONT HOISTWAY SECTION

FOR MAX. SPACING BETWEEN INSERTS SEE RAIL FORCE DETAIL



DETAIL TA

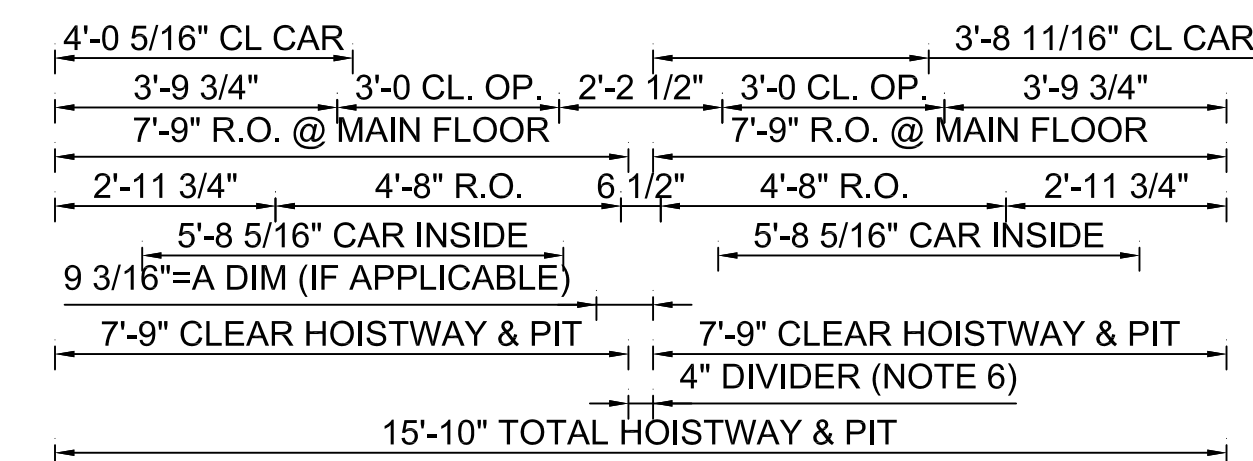
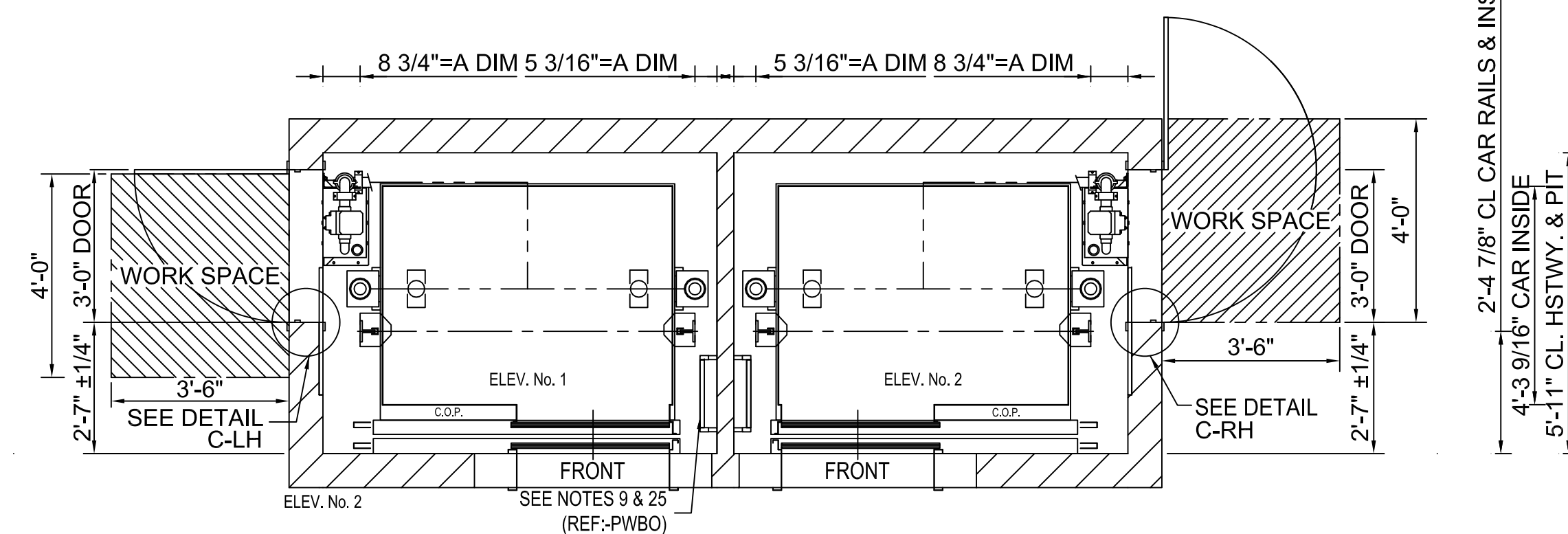
DETAIL TB

PLATE STEEL FLUSH WITH HOISTWAY SEE DETAIL TA (NOT BY OTIS)

PLATE STEEL FLUSH WITH HOISTWAY SEE DETAIL TB (NOT BY OTIS)

TUBE STEEL RAIL BRACKET SUPPORT

TUBE STEEL RAIL BRACKET SUPPORT



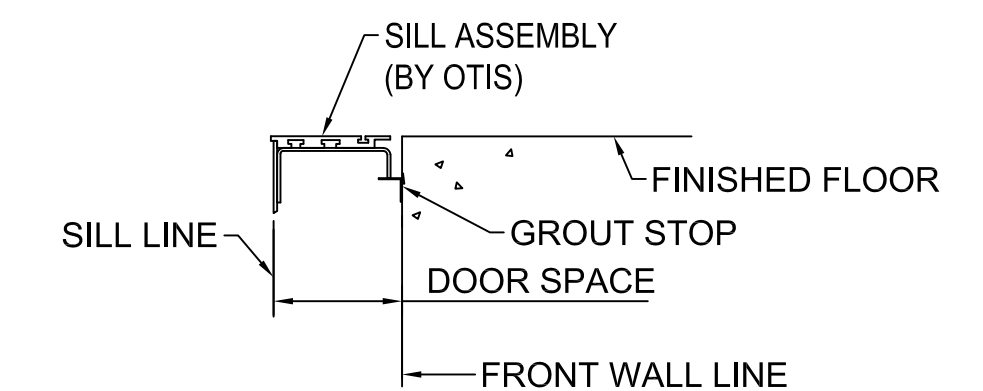
PLAN VIEW

	1 STAGE		2 STAGE	
	CAB HEIGHT		CAB HEIGHT	
MAX. "TOTAL RISE" WITH 4'-0" PIT	13'-5"	21'-6"		
MAX. "TOTAL RISE" WITH 5'-0" PIT	14'-5"	26'-9"		
MAX. "TOTAL RISE" WITH 6'-0" PIT	15'-5"	NA		
MIN. "TOTAL OVERHEAD"	12'-0"	14'-0"	12'-5"	14'-5"
MAX. "TOTAL OVERHEAD"	2'-0" GREATER THAN THE MINIMUM OVERHEAD			

STANDARD WORKING RANGES

RAIL FORCE DETAIL
*THIS FORCE INCLUDES IMPACT
SEE NOTES FORCE IN (7 & 8)

	R1	R2
CAR	147 lbs	72 lbs
*EACH BUFFER IMPACT LOAD	10413	
*EACH CYLINDER IMPACT LOAD	8100	
CAR MAXIMUM BRACKET SPACING	14'-0"	



DETAIL "A" SILL SUPPORT

ADEQUATE SUPPORT AT ALL FASTENING POINTS OF ENTRANCE ASSEMBLY REQUIRED, MUST WITHSTAND A HORIZONTAL PULL-OUT FORCE OF 140 LBS. @ EA. FASTENING POINT (8 @ EA. ENTRANCE) INCLUDING SUPPORT FOR CENTER SILL SUPPORT BRACKET (NOT BY OTIS).

HydroFit® 2100 # 100 F.P.M.
CAR TYPE = PASSENGER MACHINE LOCATION = MRL
SEISMIC = ZONE0 GLASS BACK CAR = N

OTIS

REVISION DATE: 1/12/2020	SHEET 3 OF 3
DWG. NO.: HYD 2110-MRL	
BUILDING	
LOCATION	
CONT. WITH	
OWNER	
ARCHT.	
CONTRACT NO.	

Michael,

Thanks for the drawings. An Orion 17 hydraulic with painted entrances and doors stainless steel finish cab with raised laminate panels on the walls will be around \$55,000-\$60,000. Stainless entrances and door at each floor will add \$5,000.00-\$10,000, depending on layout and other factors.

I have attached a set of preliminary drawings

Thanks,

Cliff Vaughan



First Coast Elevator Inc.

7620 County Road 208

St. Augustine, FL 32092

(904)982-7139

cliff@fcelevatorservice.com

www.fcelevatorservice.com

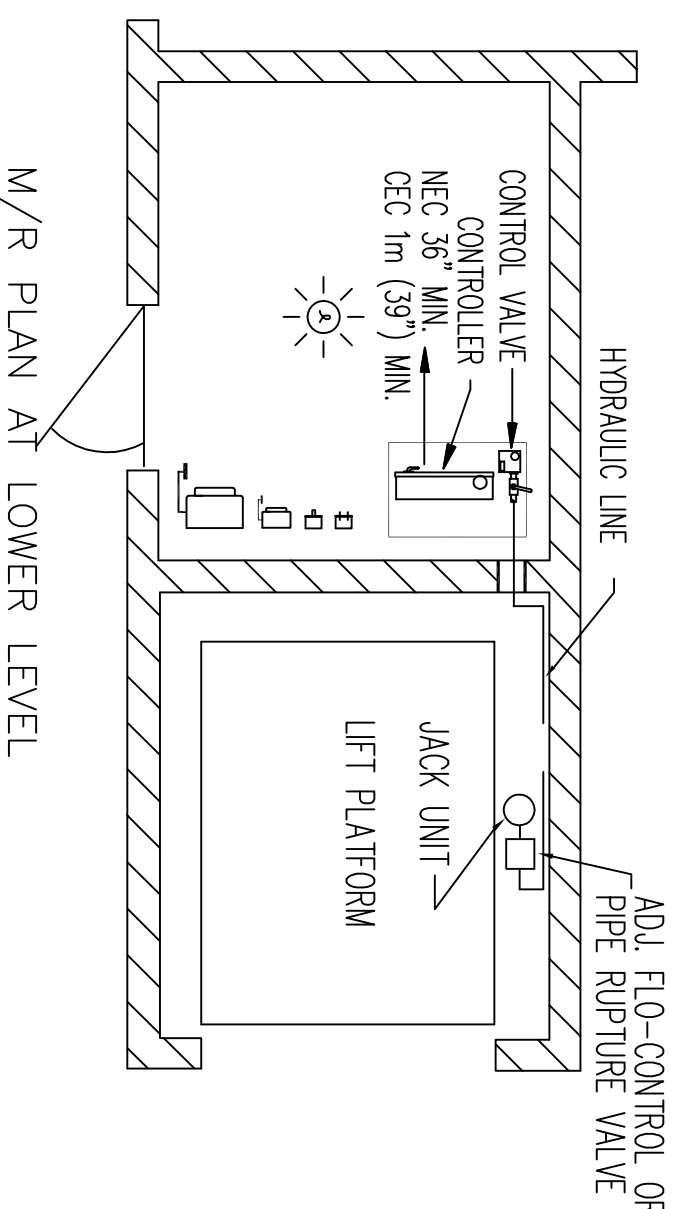
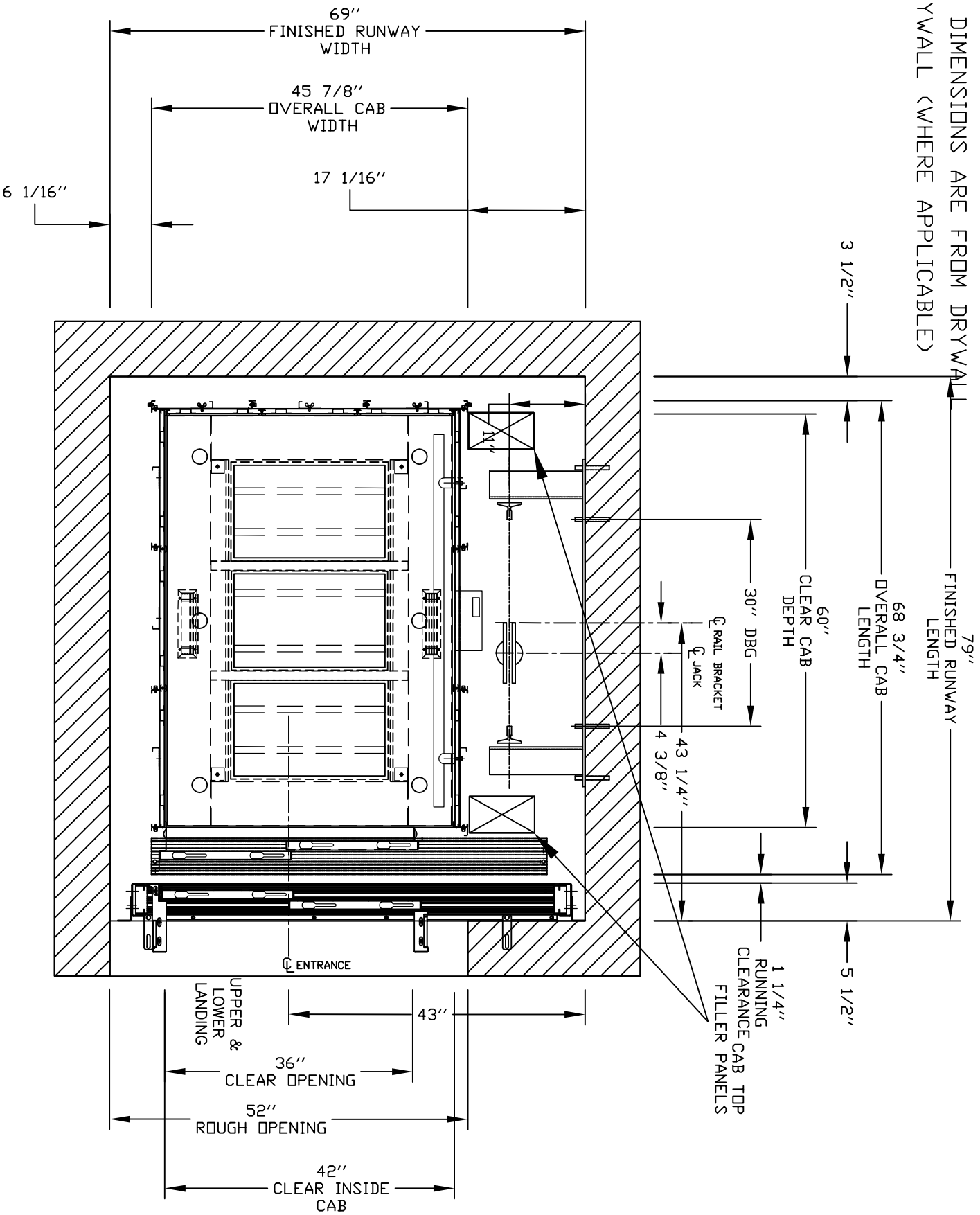
This E-mail (including attachments) is covered by the Electronic Communications Privacy Act, 18 U.S.C. §§ 2510-2521. The information in this message is privileged and confidential. It is intended only for the individual or entity named above. If you are neither the intended recipient nor an employee or agent of the intended recipient, you are hereby notified that any dissemination, distribution, or copying of this communication is strictly prohibited.

From: architect200@comcast.net [mailto:architect200@comcast.net]

Sent: Sunday, April 9, 2023 9:21 AM

To: cliff@fcelevatorservice.com

PLEASE NOTE:
 OVERALL HOISTWAY LENGTH AND
 WIDTH DIMENSIONS ARE FROM DRYWALL
 TO DRYWALL (WHERE APPLICABLE)



**PRELIMINARY DRAWING ONLY
 DRAWING APPROVAL:**

THIS DRAWING REFLECTS OUR INTERPRETATION OF THE INFORMATION PROVIDED BY THE DEALER ON THE ORDER FORM. THIS INFORMATION IS THE DEALER'S RESPONSIBILITY, AND IS THE BASIS FROM WHICH THIS LIFT IS DESIGNED AND MANUFACTURED. PLEASE INDICATE THE REQUESTED ACTION BY CHECKING ONE OF THE FOLLOWING BOXES AND SIGNING BELOW TO AUTHORIZE COMPLETION OF THIS ORDER.

- APPROVED WITH NO EXCEPTIONS
- MANUFACTURE PRODUCT AS PER DRAWING
- APPROVED WITH EXCEPTIONS, NO REAPPROVAL REQUIRED
- MAKE CHANGES AS NOTED, NO REAPPROVAL DRAWING REQUIRED
- CHANGE AS NOTED, REAPPROVAL REQUIRED
- MAKE CHANGES AS NOTED, SEND CORRECTED REAPPROVAL DRAWING FOR REAPPROVAL BEFORE MANUFACTURE

SIGNATURE: _____ DATE: _____
 CHANGES REQUEST: _____
 1. _____
 2. _____
 3. _____
 4. _____
 CAUTION: ONCE THE DRAWING IS APPROVED, JOB CANCELLATION FEES WILL APPLY

OFFICE USE ONLY:
 CONFIGURATION VERSION STAMP: 0.0
 MODULE VERSION STAMP: 0-S-8.1.3

Part No. _____
 Variant No. 1 0 9 1 4 0 7

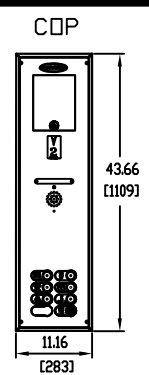
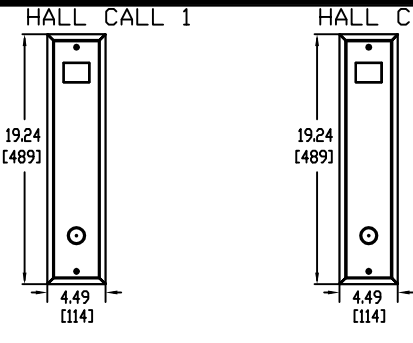
CUSTOMER: FIRST COAST ELEVATOR INC.
 PROJECT: Depaul Private Spec. School
 ADDRESS: 450 Atlantic Blvd., Atlantic Beach

DATE: 04-10-23
 REVISION DATE: 04-10-23
 COMPLETED BY: *diffidichidisy*

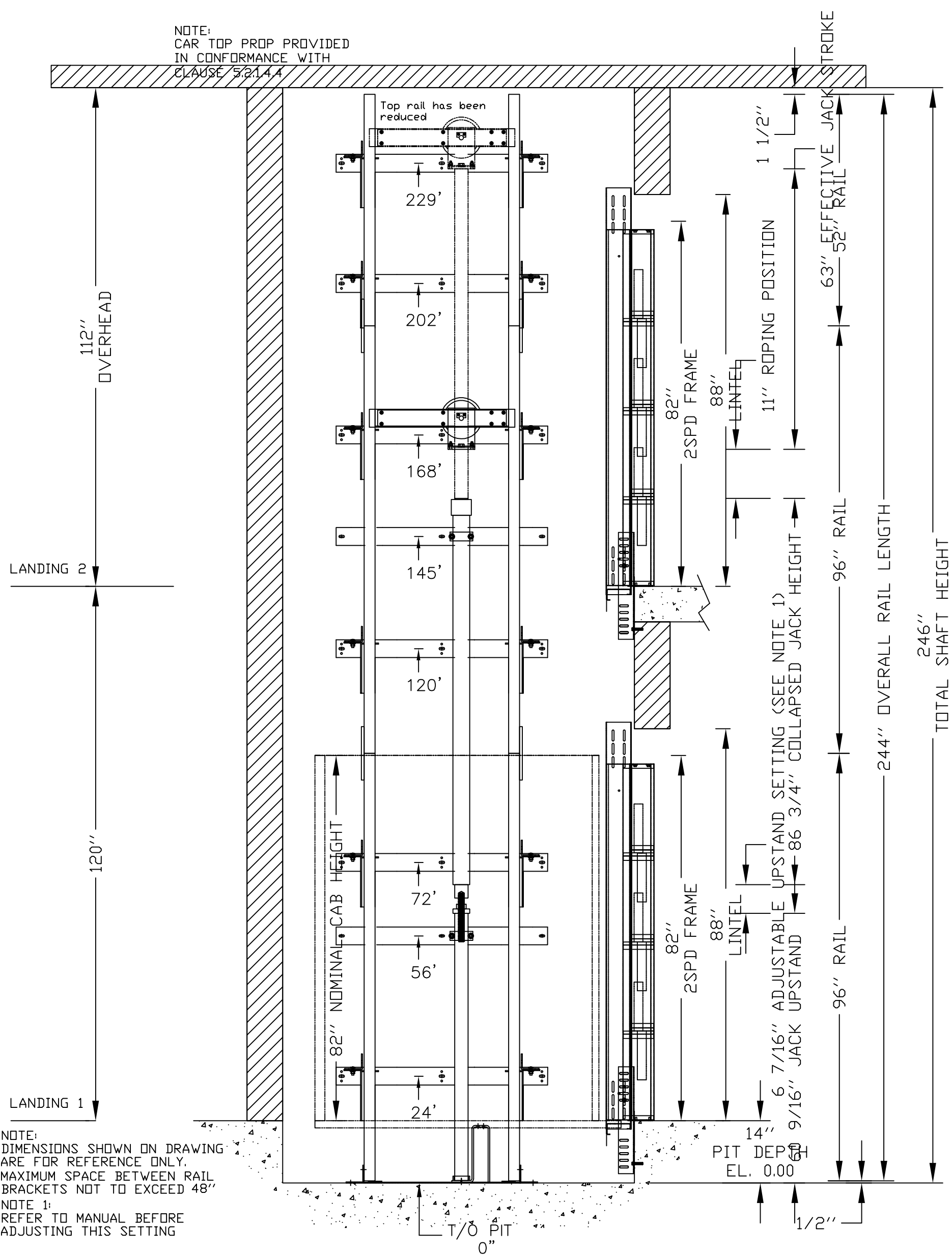
PLAN VIEW



JOB No. _____ SHEET No. 1 OF 4



NOTE:
CAR TOP PROP PROVIDED
IN CONFORMANCE WITH
CLAUSE 5.2.1.4.4



NOTE:
DIMENSIONS SHOWN ON DRAWING
ARE FOR REFERENCE ONLY.
MAXIMUM SPACE BETWEEN RAIL
BRACKETS NOT TO EXCEED 48"
NOTE 1:
REFER TO MANUAL BEFORE
ADJUSTING THIS SETTING

PIT PROP PROVIDED IN CONFORMANCE TO CLAUSE 5.2.1.4.2

ELEVATION VIEW B-B

<p>CUSTOMER: FIRST COAST ELEVATOR INC.</p> <p>PROJECT: Depaul Private Spec. School</p> <p>ADDRESS: 450 Atlantic Blvd., Atlantic Beach FLORIDA, USA</p>		<p>DATE: 04-10-23</p> <p>REVISION DATE: 04-10-23</p> <p>COMPLETED BY: cliff@celevatorserv</p>	<p>Part No.</p> <p>Variant No. 1091407</p> <p>savaria.</p> <p>JOB No. </p> <p>SHEET No. 2 OF 4</p>
<p>OFFICE USE ONLY:</p> <p>CONFIGURATION VERSION STAMP: 0.0</p> <p>MODULE VERSION STAMP: 0-S-8.1.3</p>			

PROVISIONS BY OTHERS

SPECIFICATIONS

*GENERAL

HOISTWAY- THE HOISTWAY MUST BE IN ACCORDANCE WITH "SAFETY CODE FOR ELEVATORS AND ESCALATORS" (ASME A17.1) AND ALL STATE AND LOCAL CODES.

PLUMB HOISTWAY- DUE TO CLOSE RUNNING CLEARANCES OWNER/AGENT MUST ENSURE THAT HOISTWAY AND PIT (WHERE PROVIDED) ARE LEVEL, PLUMB AND SQUARE AND ARE IN ACCORDANCE WITH THE DIMENSIONS ON THESE DRAWINGS. MINIMUM OVERHEAD CLEARANCE- OWNER/AGENT MUST ENSURE MINIMUM OVERHEAD CLEARANCE IS IN COMPLIANCE WITH CODES.

CONSTRUCTION SITE- OWNER/AGENT TO PROVIDE ALL MASONRY, CARPENTRY AND DRYWALL WORK AS REQUIRED AND SHALL PATCH AND MAKE GOOD (INCLUDING FINISH PAINTING) ALL AREAS WHERE WALLS/FLOORS MAY REQUIRE INSTALLATION OF THE LIFT.

DIMENSIONS- CONTRACTOR/CUSTOMER TO VERIFY ALL DIMENSIONS AND REPORT ANY DISCREPANCIES TO OUR OFFICE IMMEDIATELY.

PIT- WHERE REQUIRED PER, 22.25 IN THE ELEVATORS PROVIDED WITH FIREFIGHTERS EMERGENCY OPERATION, A DRAIN OR SUMP PUMP MIGHT BE REQUIRED BY OTHERS, CHECK LOCAL REQUIREMENT.

*STRUCTURAL

FLOOR/SUPPORT WALL LOADS- STRUCTURE TO ANCHOR A CRANK SHAFT AND SAFETY HARNESS, WHERE APPLICABLE/NEEDED, TO BE PROVIDED BY CONTRACTOR. CONTRACTOR TO ASSURE THAT BUILDING AND SHAFT WILL SAFELY SUPPORT ALL LOADS IMPOSED BY THE LIFT EQUIPMENT. REFER TO THE TABLES ON THIS DRAWING FOR LOADS IMPOSED BY THE EQUIPMENT. WHERE DOORS ARE REQUIRED- SUITABLE LINTELS MUST BE PROVIDED BY OWNER/AGENT. DOOR FRAMES ARE NOT DESIGNED TO SUPPORT OVERHEAD WALL LOADS.

*MACHINE ROOM

LOCATION / ACCESS- MACHINE ROOM LOCATED AT THE LOWEST LEVEL ADJACENT TO HOISTWAY, UNLESS SHOWN OTHERWISE ON THE LAYOUT DRAWINGS. FIELD ADJUSTMENT BY INSTALLER MAY BE NECESSARY TO MEET JOB SITE CONDITIONS OR REGULATIONS. MACHINE ROOM DOOR IS TO BE LOCKABLE AND IS TO MEET THE REQUIREMENTS OF THE AUTHORITY HAVING JURISDICTION.

SLEEVES FOR OIL & ELECTRIC LINES- FROM MACHINE ROOM TO RUNWAY AS REQUIRED. (POSITION PER INSTALLERS INSTRUCTIONS). MINIMUM SCHEDULE 80 PIPING REQUIRED FOR OIL LINES.

DISCONNECT SIZE	TIME DELAY FUSE SIZE	VOLTS	PHASE	AMPERAGE
MOTOR & EQUIP	30 AMPS	30 AMPS	208 volt	Three Phase
CAB LIGHTS	15 AMPS	115 V	Single Phase	15.6 AMPS

*ELECTRICAL

POWER SUPPLY- (SEE SPECIFICATIONS) LOCKABLE FUSED DISCONNECT WITH AUXILIARY CONTACT TO BRAKE THE BATTERY FEED, OR CIRCUIT BREAKERS WITH A 3-POLE BREAKER FOR BATTERY FEED REQUIRED, IN COMPLIANCE WITH ELECTRICAL CODE, AS FOLLOWS: (LOCATED ON WALL ON LOCK JAMB SIDE OF MACHINE ROOM DOOR) PERMANENT POWER- BEFORE INSTALLATION CAN BEGIN, PERMANENT POWER MUST BE SUPPLIED.

LIGHTING- THE ILLUMINATION SHALL BE NOT LESS THAN 200 LX (19 FC) AT THE FLOOR LEVEL IN ALL MACHINE ROOMS AND MACHINERY SPACES. ENSURE AT LEAST 100 LX (10 FC) AMBIENT LIGHTING OVER LIFT AREA. LIGHTING WITH SWITCH AND ELECTRICAL GFCI OUTLET IN HOISTWAY PIT. ALL LIGHTING MUST BE SOURCED FROM THE LINE SIDE OF ANY GFCI. PHONE- NEED A PHONE LAND LINE (IF NOT VOIP) FOR THE PHONE. FOR VOIP PLEASE CONTACT SAVARIA.

SMOKE DETECTORS- DETECTORS TO COMMUNICATE WITH THE ELEVATOR ARE REQUIRED BY OTHERS WHEN FIRE SERVICE IS REQUIRED ON ELEVATOR. 2019 CAMERA- NEED POWER-OVER-ETHERNET (PoE) AND INTERNET CONNECTION FOR CAMERA SAVARIA LINK REMOTE MONITORING - NONE SELECTED

*ENTRANCES

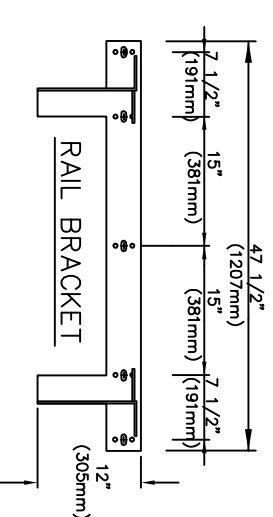
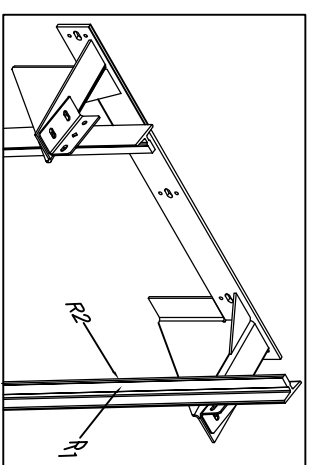
FASCIA PANEL BELOW UPPER LEVEL ENTRANCE- WHERE REQUIRED, FASCIA PANEL MUST BE FASTENED TO A SOLID WALL AND BE PERPENDICULAR TO THE FLOOR AND WALLS. HOISTWAY FASCIA IS NOT SELF-SUPPORTING FOR LONG, CONTINUOUS RUNS VOID OF ENTRANCES. ADEQUATE SUPPORT FOR THE FASCIA MUST BE PROVIDED.

ENTRANCE ASSEMBLIES- ENTRANCE ASSEMBLIES MUST BE ADJUSTED TO ALIGN WITH PLATFORM AND INTERLOCK EQUIPMENT. OTHERS TO ALLOW AN ADEQUATE ROUGH OPENING.

RETURN WALLS- RETURN WALLS AT ENTRANCES MUST BE BUILT-IN BY OTHERS AFTER ENTRANCE ASSEMBLIES ARE IN PLACE. ENTRANCE ASSEMBLY MUST BE SECURELY FASTENED TO WALLS BY ELEVATOR CONTRACTOR.

GENERAL

CLASSIFICATION: Public Building
 APPLIED CODE: CSA/ASME A17.1/B44-2016 Sec 5.2
 MODEL: Orion17-Hydraulic
 CAPACITY: 1400lbs
 NOMINAL SPEED: 30 fpm [0.15 m/s]
 TRAVEL: 120"
 PIT DEPTH: 14"
 POWER SUPPLY: 60 Hz Three Phase 208 volt
 HYDRAULIC
 PUMP MFR: CONCORD
 PUMP MODEL: VICKERS 4P
 MOTOR: 5.0 hp
 VALVE MODEL NO. EPV _ 7
 VALVE COIL VOLTS: 24 V DC
 MAX WORKING PRESSURE: 1500 psi
 RELIEF VALVE SETTING: MAX 25% ABOVE ACTUAL WORKING PRESSURE
 RESERVOIR: 15-16.5 gal/57-63 L
 HOSE & SAFETY VALVE: no



PIT RE-ACTION FORCE	FORCE
R3	8000 LBS
R4	3000 LBS
R5	9000 LBS

RAIL FORCES

* R1	* R2
720 lbf	260 lbf
RAIL WEIGHT :	8.0 lbs / ft

FOR TOTAL PULL-OUT FORCE ON RAIL BRACKET,
 eg 2 x 720 = 1440 lbf
 FOR LOCAL APPLICATION OF PIT LOAD.

R1 MUST BE DOUBLED.
 SEE PIT CHANNEL/
 BUFFER SKETCH.

CAR FINISH DETAILS

CAB PANEL SELECTION: Stainless Steel & Raised Panels
 CEILING SELECTION: Stainless Steel
 CAB ENTRANCE: Match Cab
 PLASTIC LAMINATE FINISHES: To be Determine
 POT LIGHT FINISH: Stainless Steel
 TRIM COLOUR: Not Applicable
 CAR STATION PLATE: stainless steel
 HAND RAIL TYPE: Stainless Steel Cylindrical
 CAB FLOORING: Plywood Floor
 FINISHED FLOOR THICKNESS: 0.375"
 TELEPHONE BOX: no
 TELEPHONE BOX FINISH: Not Applicable
 HAND FREE PHONE: yes, Hands Free Phone
 CAR DIMENSIONS/PLATFORM GATES
 CAB TYPE: Type 1 Right Hand
 CAB HEIGHT: 82" [2083mm] Cab Height
 CAB OPERATION: automatic operation
 GATES REQUIRED: Automatic Operated Gates
 GATE TYPE: 2 Spd Doors (Wittur) match CAB
 GATE FINISH: Stainless Steel
 INSIDE PLATFORM AREA: 17.5 sf.
 HOISTWAY
 DOOR TYPE: 2 spd Sliding Doors (Wittur)
 HOISTWAY DOORS FINISH: Standard Finish (Primer Grey)
 HOISTWAY FINISH: Masonary

JACK UNIT

EFFECTIVE STROKE: 63"
 SOLID PLUNGER O/D: 3"
 CYLINDER O/D: 3 3/4 "
 CYLINDER I/D: 3 1/4 "
 SPLIT CYLINDER? no
 COLLAPSED LENGTH: 86 3/4 "
 CYLINDER WALL THICKNESS: 1/4 "

SUSPENSION

TYPE: ELEVATOR CABLE 2 X 3/8" DIA.
 CONSTRUCTION: IWRC 7 X 19, GALVANIZED STEEL RHRL
 NOMINAL STRENGTH: 14,400 lbs Per Cable
 SPECS: MI-DTL-83420
 OVER SPEED VALVE
 MODEL: AS PER SECTION 3.19.4.7
 BLAIN R10 AA
 (1500psi (10342 kPa) MAX WORKING PRESSURE)

FIRST DOOR BY LANDING CHART

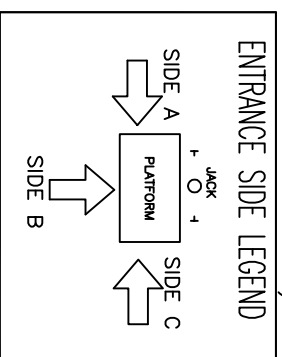
DOOR TYPE	LANDING 1	LANDING 2
ENTRANCE SIDE	2 Speed Sliding Doors (Wittur)	2 Speed Sliding Doors (Wittur)
DOOR LATCH	Side C	Side C
LOCK TYPE	Left Hand	Left Hand
AUTO DOOR OPENER	Not Applicable	Not Applicable
HALL CALL KEY SWITCH	NO SIGNS	KEYS
HOISTWAY ACCESS	KEYS	KEYS
FLOOR MARKING	no	no
MAIN EGRESS FLOOR	1*	2

OPTIONS

FASTENERS: Concrete Anchors
 FIREMAN'S SERVICE: Phase 1
 OVERSPEED GOV./VALVE: OverSpeed Valve
 CONDUCTOR CABLE: 40' [12m] cable
 DATA ACCESS TERMINAL: No Tool
 DUPLINE PROGRAMMING TOOL: Programmer and Tool not Incl.
 TEMP. RUN BUTTON: Temp Run Button not incl.
 LANDING SIGNS: no signs required

FLOOD SWITCH:

Not Required
 STATE SPEC. FIREMAN KEY: N/A (FEOK1)
 SPEEDY SET-UP JIG: Speedy Jig Not req.
 DIRECT. ARROW & VOICE ANNUNCIATOR: Not required



OFFICE USE ONLY:

CONFIGURATION VERSION STAMP: 0.0
 MODULE VERSION STAMP: 0-5-813

Part No. 1091407

Variant No. 1091407

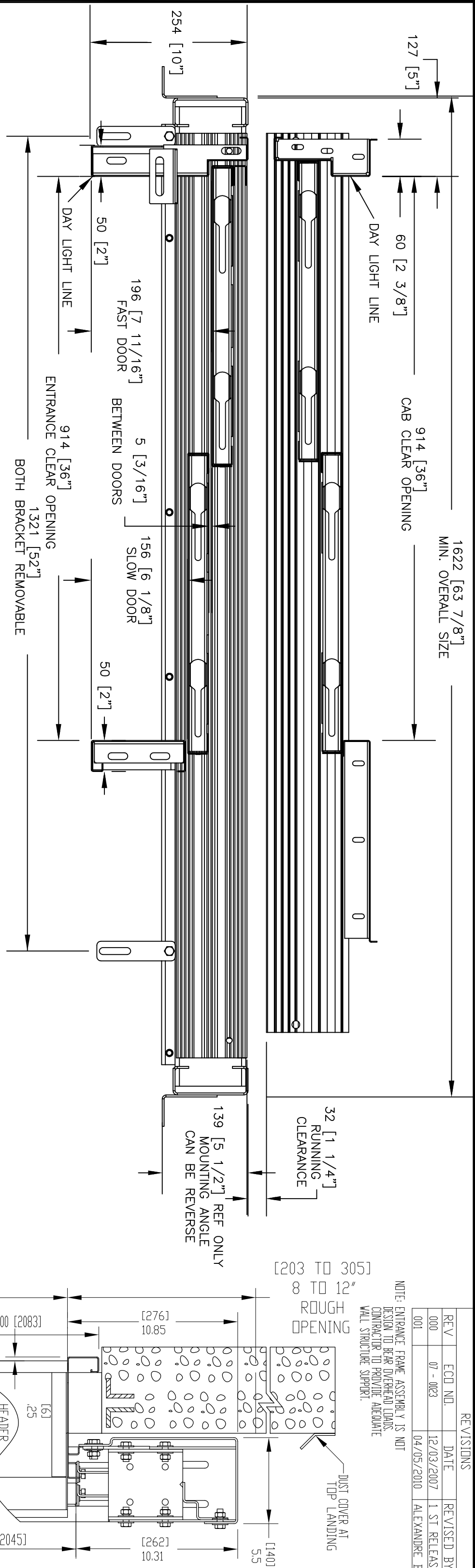


1622 [63 7/8"]
MIN. OVERALL SIZE

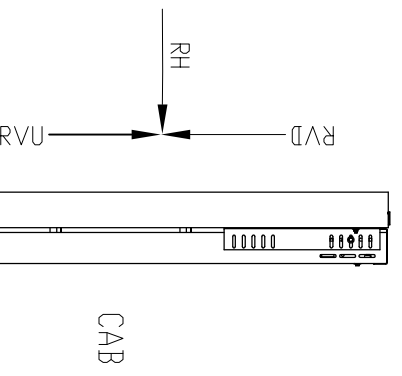
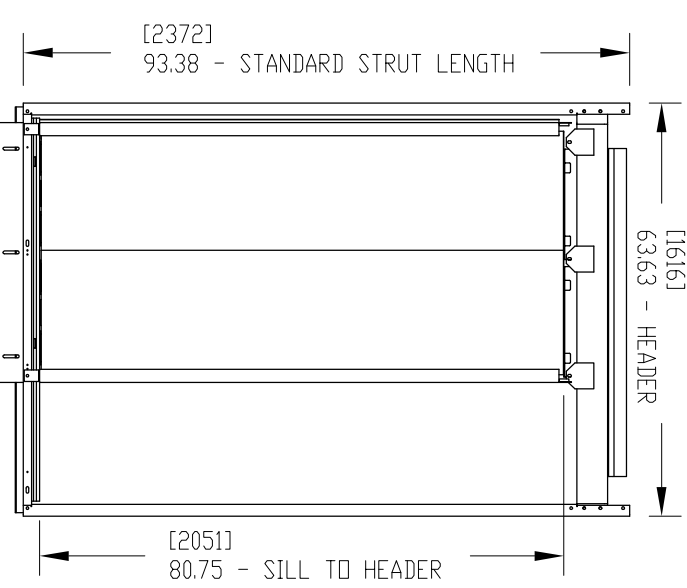
REVISIONS

REV	ECD NO.	DATE	REVISED BY
000	07 - 0023	12/03/2007	1 ST RELEASE
001		04/05/2010	ALEXANDRE B

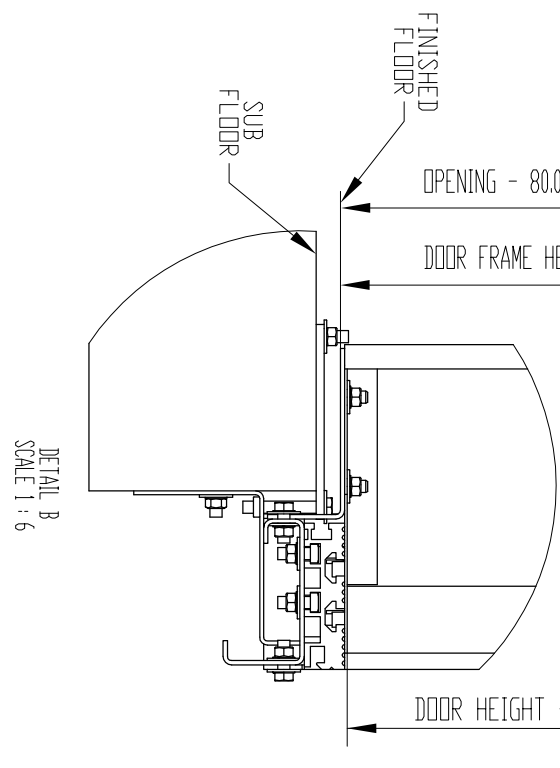
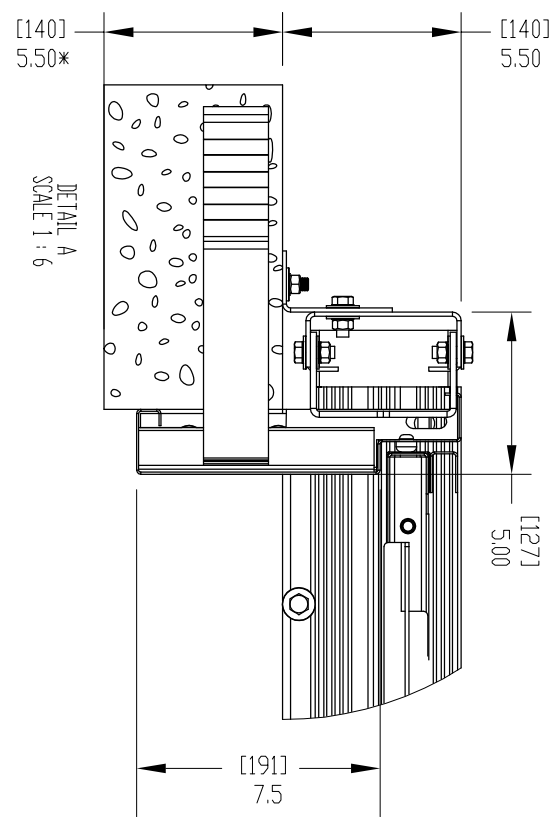
NOTE: ENTRANCE FRAME ASSEMBLY IS NOT
DESIGN TO BEAR OVERHEAD LOADS.
CONTRACTOR TO PROVIDE ADEQUATE
WALL STRUCTURE SUPPORT.



ENTRANCE LOADS ON BUILDING
RH = 5000 N (1125 lbf)
RVD = 1550 N (350 lbf)
RVU = 1000 N (225 lbf)
PER SECTION 2.11.11.8.



*NOTE: SUGGESTED 2 HOURS
MASONRY CONSTRUCTION



LEFT HAND SHOWN

OFFICE USE ONLY:
CONFIGURATION VERSION STAMP: 0.0
MODULE VERSION STAMP: 0-S-81.3

Part No.
Variant No. 1 09 1 407

CUSTOMER: FIRST COAST ELEVATOR INC.
PROJECT: Depaul Private Spec. School
ADDRESS: 450 Atlantic Blvd., Atlantic Beach
MASONRY CONSTRUCTION 36 X 80

DATE: 04-10-23
REVISION DATE: 04-10-23
COMPLETED BY: diffidichidivsvy

JOB No. 4 OF 4
SHEET No. 4 OF 4

