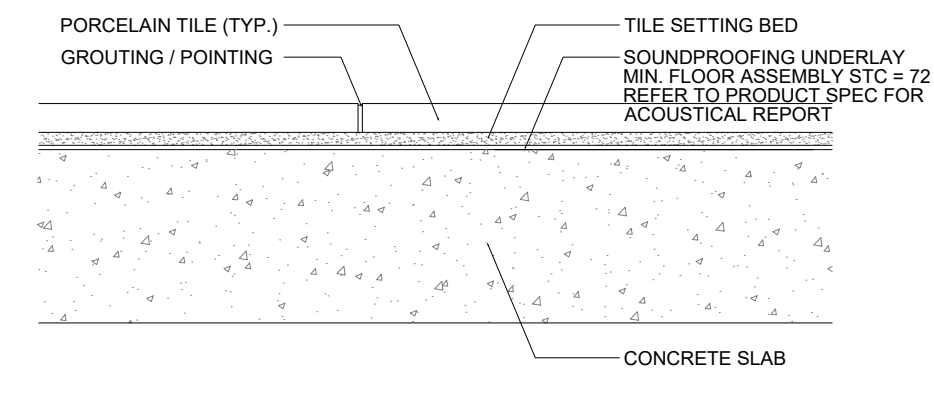
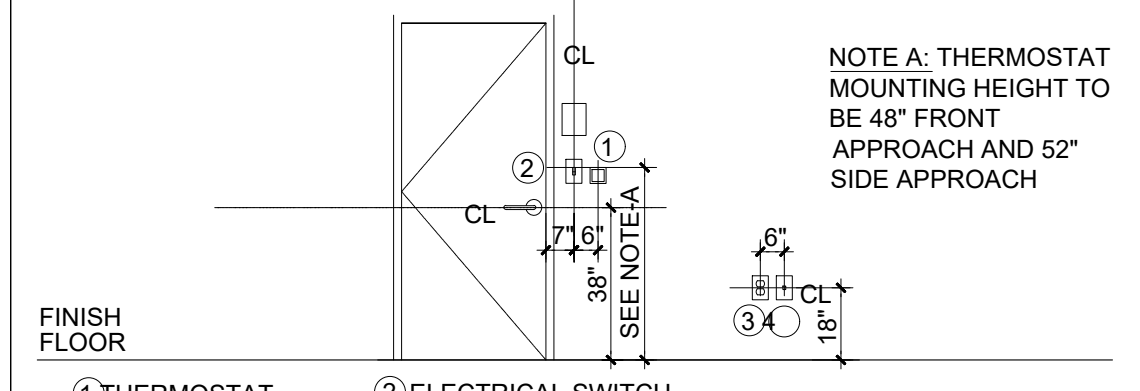


Note:
Bathub and shower floors and walls above bathtubs with installed shower heads and in shower compartments shall be finished with a nonabsorbent surface. Such wall surfaces shall extend to a height of not less than 6 feet above the floor.

5 SHOWER DETAIL
SCALE: N.T.S.



4 FLOOR FINISH ASSEMBLY DETAIL
SCALE: N.T.S.

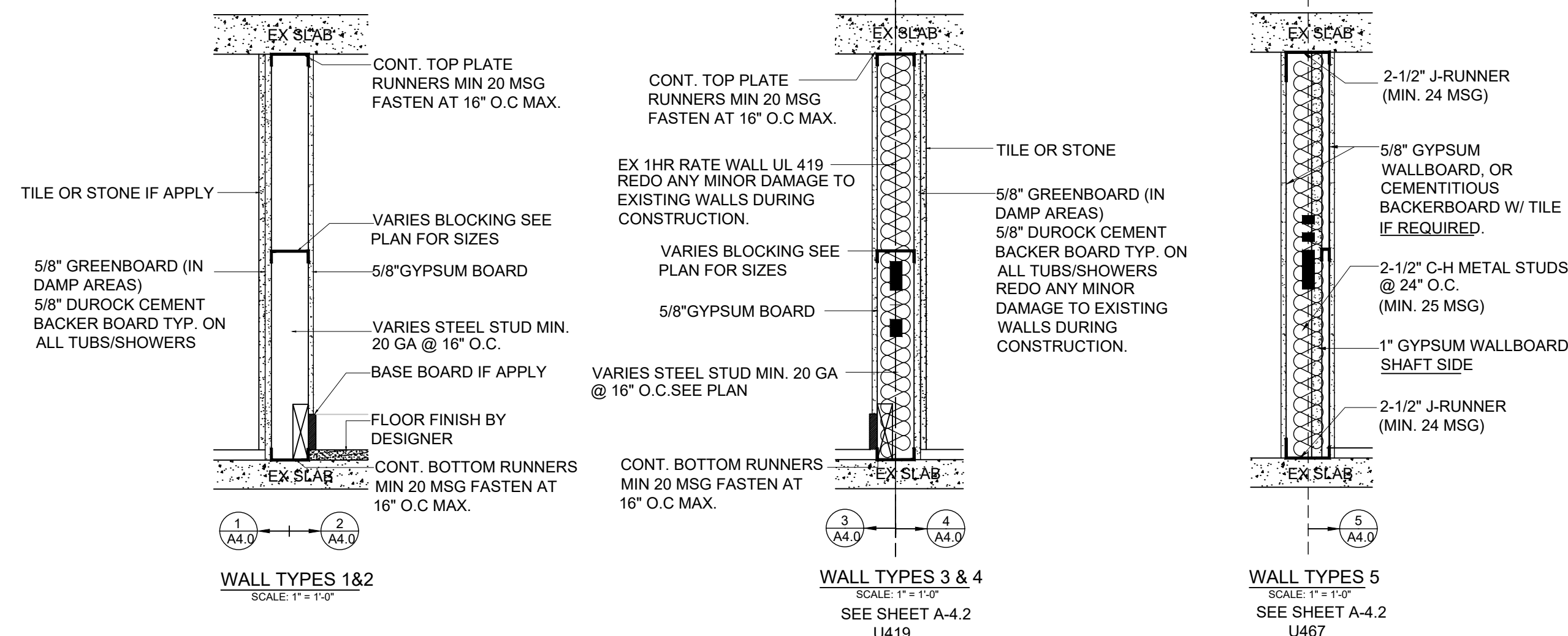


3 MOUNTING HEIGHTS DETAIL
SCALE: N.T.S.

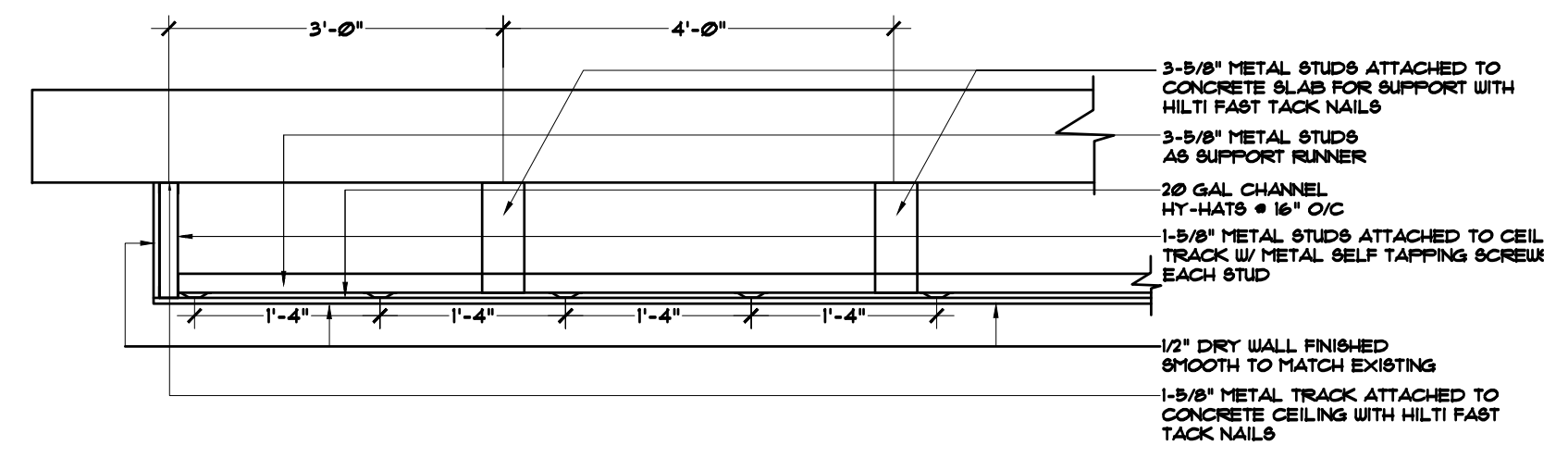
GENERAL PARTITION NOTES:

- PROVIDE FIRE RESISTANCE GYPSUM BOARD AT ALL WALLS AND PARTITIONS INDICATED TO BE FIRE RATED.
- SEE SECTION 12.05 FOR MORE INFORMATION CONCERNING THE MINIMUM REQUIREMENTS FOR CONSTRUCTION OF EACH PARTITION TYPE SPECIFIED AND APPLICABLE TO THE WORK OF THIS PROJECT. HOWEVER, ADDITIONAL AND/OR MORE RESTRICTIVE REQUIREMENTS MAY BE INDICATED BY THE SPECIFICATIONS AND DRAWINGS, SUCH AS:
 - USE 5/8" THICK GYPSUM BOARD THROUGHOUT.
 - USE 1/2" O.C. MAX STUD SPACING UNLESS OTHERWISE NOTED. THE SPACING STATED BY THE REFERENCED APPROVAL OR TEST REPORT IS THE MAX SPACING.
 - USE STUDS OF GAGE INDICATED ON THE DRAWINGS OR IN THE SPECIFICATIONS. THE GAGE STATED BY THE REFERENCED APPROVAL OR TEST REPORT IS THE MINIMUM GAGE.
 - INSTALL ONE LAYER OF 5/8" TYPE "X" WATER RESISTANT GYPSUM BOARD (WHERE SPECIFIED) OCCURS ON EACH SIDE OF THE PARTITION.
 - INSTALL ONE LAYER OF 1/2" CEMENT BACKER BOARD IN LIEU OF GYPSUM BOARD WHERE SPECIFIED.
- WHERE PARTITION TYPE DESIGNATION ON FLOOR PLANS IS INTERRUPTED BY DOOR OPENING, GLAZED PARTITION, ETC., CONSTRUCTION ABOVE SHALL BE THE SAME AS THAT DESIGNATED FOR THE PARTITION WHICH THE INTERRUPTION OCCURRED.
- THE MINIMUM REQUIREMENTS FOR CONSTRUCTION OF EACH PARTITION TYPE SPECIFIED AND APPLICABLE TO THE WORK OF THIS PROJECT. HOWEVER, ADDITIONAL AND/OR MORE RESTRICTIVE REQUIREMENTS MAY BE INDICATED BY THE SPECIFICATIONS AND DRAWINGS, SUCH AS:
 - WITHIN 3 FEET HORIZONTALLY AND 4 FEET VERTICALLY OF JANITORS SINKS.
 - AT OTHER LOCATIONS AS INDICATED BY THE ARCHITECTURAL FINISH SCHEDULE.
- INSTALL ONE LAYER OF 1/2" CEMENT BACKER BOARD IN LIEU OF GYPSUM BOARD WHERE SPECIFIED.
- DO NOT USE GYPSUM BOARD IN THE FOLLOWING LOCATIONS:
 - AT MEET LOCATIONS, SUCH AS SHOWER STALLS AND TUB SURROUNDINGS.
 - WHERE CERAMIC TILE FINISHES ARE INDICATED. REFER TO FINISH SCHEDULE, PLANS AND/OR INTERIOR ELEVATIONS.
 - AT OTHER LOCATIONS AS INDICATED BY THE ARCHITECTURAL FINISH SCHEDULE.
- ALL PARTITIONS THAT ARE AN ELEMENT OF AN EXT. WALL TO RECEIVE R-11 MIN. INSULATION, OR AS PER ENERGY CALCUS, WHOEVER IS MORE STRINGENT.
- ALL NON-LOAD-BEARING METAL FRAMING SHALL BE 20 GAUGE UNLESS OTHERWISE NOTED.
- PROVIDE 20 GAUGE METAL FRAMING IN LIEU OF 2 1/2" GYPSUM BOARD ON EACH SIDE THAT EXCEEDS THE HEIGHT LIMITS AS LISTED BELOW:
 - 1 1/2" METAL STUDS: 11'-0"
 - 3/8" METAL STUDS: 14'-0"
 - 4" METAL STUDS: 15'-0"
 - 6" METAL STUDS: 22'-0"
- PROVIDE 18 GAUGE METAL FRAMING IN LIEU OF 20 GAUGE METAL FRAMED WALLS WITH ONE LAYER OF 5/8" GYPSUM WALL BOARD ON EACH SIDE THAT EXCEEDS THE HEIGHT LIMITS AS LISTED BELOW:
 - 2 1/2" METAL STUDS: 11'-0"
 - 3/8" METAL STUDS: 14'-0"
 - 4" METAL STUDS: 15'-0"
 - 6" METAL STUDS: 22'-0"
- REFER TO SHEETS AT 101A, AT 101B FOR HEAD OF WALL DETAIL, CONTROL JOINTS & OTHER WALL ASSEMBLY DETAILS.
- ALL PARTITIONS TO MEET STANDARD REFERENCE CO-2100 & GA-8000 FOR I.C. 2104 CHAPTER 51-REFERENCED STANDARDS.
- ACoustical PARTITIONS NOTES:
 - RESISTANT CHANNEL TO BE CLEARLY DETECTED, 90 DEGREE "ROCK" OR OTHER HIGH PERFORMANCE PRODUCT PER METHODS (PER DRAWING AND PACT. (RISC-1).
 - RESISTANT CHANNEL OR 2" METAL INSULATION MUST BE EXACTLY PER MANUFACTURER'S INSTRUCTIONS (STUDS MUST BE CENTER LINE OF CHANNEL (20-OUTS) WITH SHORT SCREWS IN SPECIFIC LOCATIONS AS NOT TO "SHORT CIRCUIT" RESISTANT CHANNEL OR CLIP.
 - DRYWALL COMPLETELY FLIGHTING ON THE CHANNELS WITH NO RESISTANT CONTACT OR CONNECTION JOINT AROUND ENTIRE PERIMETER OF DRYWALL FLOOR, SIDES AND SLAB ABOVE).
 - NO CONTACT WITH SERVICE BOXES (FULL PERIMETER CAULK JOINT) AND SERVICE BOXES (BUILT OUT OR WITH EXTENDERS DUE TO CHANNEL/CUTIP).
 - NO ATTACHMENT OF HANGING ELEMENTS ON THE RESISTANT SIDE OF WALL.
 - ANY FIRE RATED (OR) WALL GREATER THAN 1/8" THICK FIRE RATING MUST HAVE ALL CELLS SQUARED UP TO MEET REQUIREMENTS.
 - PROVIDE 25 GAUGE EQUIVALENT STUDS BY CLARK DISTRIC AT THE ATTACHED LOAD-BEARING WALLS INCLUDING UNIT BEARING AND CORRIDOR WALLS AS ALTERNATIVE MATERIALS SUBJECT TO APPROVAL BY THE BUILDING OFFICIAL PURSUANT TO 2014 F.P.C. 504.1. PRESTRESS AND PROTECTIVE 25 SHALL BE 0.01 INCH THICK WITH MINIMUM YIELD STRENGTH OF 90 KSI.
 - STC VALUES SHOWN ARE BASED ON TEST RESULTS IN A CONTROLLED ENVIRONMENT OF A LAB. ACTUAL INSTALLED CONDITIONS MAY YIELD SLIGHTLY LOWER STC VALUES.
 - PROVIDE 18 GAUGE OR HEAVIER STL STUDS 12 INCH O.C. AT ALL HEADS RECEIVING STONE VENEER. GO TO PROVIDE SHOP DRAWINGS AND CALCULATIONS FOR ALL REVIEW.
 - REFER TO GROUND FLOOR LOBBY ENLARGED WALL SECTION SHEET A-18 FOR ADDITIONAL INTERIOR PARTITION CLARIFICATION.
 - PARTITION TYPES FOR THIS PROJECT ARE SHOWN TO THE RIGHT OF THIS PAGE.
 - FIRE RATED WALLS WILL NOT BE COMBOSHEARED BY THE INSTALLATION OF KITCHEN CABINETS, BATHROOM VANITIES AND/OR HANGING REFLECTORS LOCATED AGAINST A FIRE RATED WALL.
- REFER TO SHEET 12.05 FOR MORE INFORMATION CONCERNING THE MINIMUM REQUIREMENTS FOR CONSTRUCTION OF EACH PARTITION TYPE SPECIFIED AND APPLICABLE TO THE WORK OF THIS PROJECT. HOWEVER, ADDITIONAL AND/OR MORE RESTRICTIVE REQUIREMENTS MAY BE INDICATED BY THE SPECIFICATIONS AND DRAWINGS, SUCH AS:
 - WITHIN 3 FEET HORIZONTALLY AND 4 FEET VERTICALLY OF JANITORS SINKS.
 - AT OTHER LOCATIONS AS INDICATED BY THE ARCHITECTURAL FINISH SCHEDULE.
- INSTALL ONE LAYER OF 5/8" TYPE "X" WATER RESISTANT GYPSUM BOARD (WHERE SPECIFIED) OCCURS ON EACH SIDE OF THE PARTITION.
- INSTALL ONE LAYER OF 1/2" CEMENT BACKER BOARD IN LIEU OF GYPSUM BOARD WHERE SPECIFIED.
- DO NOT USE GYPSUM BOARD IN THE FOLLOWING LOCATIONS:
 - AT MEET LOCATIONS, SUCH AS SHOWER STALLS AND TUB SURROUNDINGS.
 - WHERE CERAMIC TILE FINISHES ARE INDICATED. REFER TO FINISH SCHEDULE, PLANS AND/OR INTERIOR ELEVATIONS.
 - AT OTHER LOCATIONS AS INDICATED BY THE ARCHITECTURAL FINISH SCHEDULE.
- ALL PARTITIONS THAT ARE AN ELEMENT OF AN EXT. WALL TO RECEIVE R-11 MIN. INSULATION, OR AS PER ENERGY CALCUS, WHOEVER IS MORE STRINGENT.
- ALL NON-LOAD-BEARING METAL FRAMING SHALL BE 20 GAUGE UNLESS OTHERWISE NOTED.
- PROVIDE 20 GAUGE METAL FRAMING IN LIEU OF 2 1/2" GYPSUM BOARD ON EACH SIDE THAT EXCEEDS THE HEIGHT LIMITS AS LISTED BELOW:
 - 1 1/2" METAL STUDS: 11'-0"
 - 3/8" METAL STUDS: 14'-0"
 - 4" METAL STUDS: 15'-0"
 - 6" METAL STUDS: 22'-0"
- ADDITIONALLY, PROVIDE 20 GAUGE METAL WALL FRAMING AT THE FOLLOWING LOCATIONS:
 - DOUBLE STUD JAMB ASSEMBLY AT TRANSOMING WALLS & OPENINGS OF CORRIDOR WALLS.
 - FIRST STUD IN THE PARTITION BEYOND THE DOUBLE STUD JAMB ASSEMBLY LOCATE STUD 1 FROM DOUBLE STUD ASSEMBLY.
 - STUDS TO WHICH CEMENTITIOUS BACKER UNITS ARE INSTALLED FOR WET AREAS.
 - STUDS TO WHICH REINFORCING GYPSUM WALL PANELS ARE ATTACHED.
 - STUDS TO WHICH WALL MOUNTED EQUIPMENT, INCLUDING OWNER FURNISHED EQUIPMENT IS FASTENED TO.
 - STUD WALL AND BULL TRACK BELOW WINDOW OPENINGS.
 - STUDS INSTALLED FOR OPENING HEADS BETWEEN DOUBLE STUD JAMB ASSEMBLIES.
- PROVIDE 20 GAUGE METAL FRAMING IN LIEU OF 20 GAUGE METAL FRAMED WALLS WITH TWO LAYERS OF 5/8" GYPSUM WALL BOARD ON EACH SIDE THAT EXCEEDS THE HEIGHT LIMITS AS LISTED BELOW:
 - 1 1/2" METAL STUDS: 11'-0"
 - 3/8" METAL STUDS: 14'-0"
 - 4" METAL STUDS: 15'-0"
 - 6" METAL STUDS: 22'-0"
- PROVIDE 18 GAUGE METAL WALL FRAMING IN LIEU OF 20 GAUGE METAL FRAMED WALLS WITH ONE LAYER OF 5/8" GYPSUM WALL BOARD ON EACH SIDE THAT EXCEEDS THE HEIGHT LIMITS AS LISTED BELOW:
 - 2 1/2" METAL STUDS: 11'-0"
 - 3/8" METAL STUDS: 14'-0"
 - 4" METAL STUDS: 15'-0"
 - 6" METAL STUDS: 22'-0"
- REFER TO SHEETS AT 101A, AT 101B FOR HEAD OF WALL DETAIL, CONTROL JOINTS & OTHER WALL ASSEMBLY DETAILS.
- ALL PARTITIONS TO MEET STANDARD REFERENCE CO-2100 & GA-8000 FOR I.C. 2104 CHAPTER 51-REFERENCED STANDARDS.
- ACoustical PARTITIONS NOTES:
 - RESISTANT CHANNEL TO BE CLEARLY DETECTED, 90 DEGREE "ROCK" OR OTHER HIGH PERFORMANCE PRODUCT PER METHODS (PER DRAWING AND PACT. (RISC-1).
 - RESISTANT CHANNEL OR 2" METAL INSULATION MUST BE EXACTLY PER MANUFACTURER'S INSTRUCTIONS (STUDS MUST BE CENTER LINE OF CHANNEL (20-OUTS) WITH SHORT SCREWS IN SPECIFIC LOCATIONS AS NOT TO "SHORT CIRCUIT" RESISTANT CHANNEL OR CLIP.
 - DRYWALL COMPLETELY FLIGHTING ON THE CHANNELS WITH NO RESISTANT CONTACT OR CONNECTION JOINT AROUND ENTIRE PERIMETER OF DRYWALL FLOOR, SIDES AND SLAB ABOVE).
 - NO CONTACT WITH SERVICE BOXES (FULL PERIMETER CAULK JOINT) AND SERVICE BOXES (BUILT OUT OR WITH EXTENDERS DUE TO CHANNEL/CUTIP).
 - NO ATTACHMENT OF HANGING ELEMENTS ON THE RESISTANT SIDE OF WALL.
 - ANY FIRE RATED (OR) WALL GREATER THAN 1/8" THICK FIRE RATING MUST HAVE ALL CELLS SQUARED UP TO MEET REQUIREMENTS.
 - PROVIDE 25 GAUGE EQUIVALENT STUDS BY CLARK DISTRIC AT THE ATTACHED LOAD-BEARING WALLS INCLUDING UNIT BEARING AND CORRIDOR WALLS AS ALTERNATIVE MATERIALS SUBJECT TO APPROVAL BY THE BUILDING OFFICIAL PURSUANT TO 2014 F.P.C. 504.1. PRESTRESS AND PROTECTIVE 25 SHALL BE 0.01 INCH THICK WITH MINIMUM YIELD STRENGTH OF 90 KSI.
 - STC VALUES SHOWN ARE BASED ON TEST RESULTS IN A CONTROLLED ENVIRONMENT OF A LAB. ACTUAL INSTALLED CONDITIONS MAY YIELD SLIGHTLY LOWER STC VALUES.
 - PROVIDE 18 GAUGE OR HEAVIER STL STUDS 12 INCH O.C. AT ALL HEADS RECEIVING STONE VENEER. GO TO PROVIDE SHOP DRAWINGS AND CALCULATIONS FOR ALL REVIEW.
 - REFER TO GROUND FLOOR LOBBY ENLARGED WALL SECTION SHEET A-18 FOR ADDITIONAL INTERIOR PARTITION CLARIFICATION.
 - PARTITION TYPES FOR THIS PROJECT ARE SHOWN TO THE RIGHT OF THIS PAGE.
 - FIRE RATED WALLS WILL NOT BE COMBOSHEARED BY THE INSTALLATION OF KITCHEN CABINETS, BATHROOM VANITIES AND/OR HANGING REFLECTORS LOCATED AGAINST A FIRE RATED WALL.

1 PARTITION TYPE
SCALE: N.T.S.



2 GENERAL PARTITION NOTES
SCALE: N.T.S.



7 CEILING FRAMING DETAIL
SCALE: N.T.S.

Engineer Of Record:
GENESIS FORTUNE, LLC
CONSULTING ENGINEERING
1395 BRICKELL AVE. SUITE 800
MIAMI, FL 33131
TEL: 305.778.7342
EMAIL: jorge@genesisfortune.com
CA# 32749

Consultant:
FAUSTO GUERRERO, P.E.
PROFESSIONAL ENGINEER
19552 SW 133rd Avenue
Miami, FL 33177
Office: (786) 443-1685
fngengineering@aol.com

Consultant:



This item has been digitally signed and sealed by Fausto Guerrero, P.E. on the date adjacent to the seal. Printed copies of this document are not considered signed and sealed and the signature must be verified on any electronic copies.

SEAL / SIGNATURE / DATE:

PROJECT / OWNER INFORMATION:

600 NW 5th STREET
GENERAL COMMERCIAL
INTERIOR REMODELING
600 NW 5th Street
Miami, FL 33128

REVISIONS:

PROJECT NO.:
DWG. FILE:
DATE: 5.8.21
SHEET TITLE:

DETAILS
SCALE:
SHEET NO.:
A-7.0