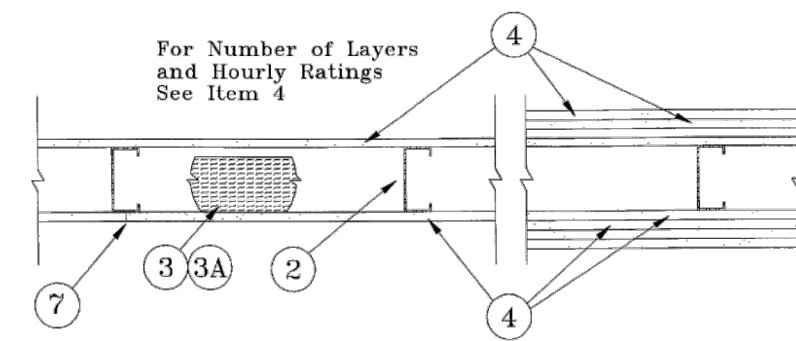


2005 FIRE RESISTANCE DIRECTORY

840 FIRE RESISTANCE RATINGS - ANS/UL 263 (BXUV)

Design No. U419
Nonbearing Wall Ratings — 1, 2, 3 or 4 Hr (See Items 3 & 4)



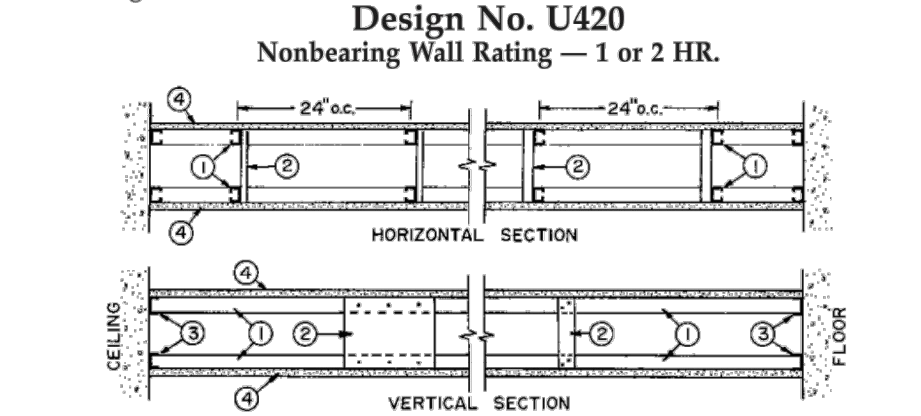
- Floor and Ceiling Runners** — (Not shown) — Channel shaped, fabricated from min 25 MSG corrosion-protected steel, min width to accommodate stud size, with min 1 in. long legs, attached to floor and ceiling with fasteners 24 in. OC max.
- Steel Studs** — Channel shaped, fabricated from min 25 MSG corrosion-protected steel, min width as indicated under Item 4, min 1-1/4 in. flanges and 1/4 in. return, spaced a max of 24 in. OC. Studs to be cut 3/8 to 3/4 in. less than assembly height.
- Batts and Blankets** — (Required as indicated under Item 4) — Mineral wool batts, friction fitted between studs and runners. Min nom thickness as indicated under Item 4. See **Batts and Blankets (BKNV or BZJZ)** Categories for names of Classified companies.
- Batts and Blankets** — (Optional) — Placed in stud cavities, any glass fiber or mineral wool insulation bearing the UL Classification Marking as to Surface Burning Characteristics and/or Fire Resistance. See **Batts and Blankets (BKNV or BZJZ)** Categories for names of Classified companies.
- Gypsum Board*** — Gypsum panels with beveled, square or lapped edges, applied vertically or horizontally. Vertical joints centered over studs and staggered one stud cavity on opposite sides of studs. Vertical joints in adjacent layers (multilayer systems) staggered one stud cavity. Horizontal joints need not be backed by steel framing. Horizontal edge joints and horizontal butt joints on opposite sides of studs need not be staggered. Horizontal edge joints and horizontal butt joints in adjacent layers (multilayer systems) staggered a min of 12 in. The thickness and number of layers for the 1 hr, 2 hr, 3 hr and 4 hr ratings are as follows:

Rating	Min Stud Depth	No. of Layers & Thkns of Panel	Min Thkns of Insulation (Item 3)
1	3-1/2	1 layer, 5/8 in. thick	Optional
1	2-1/2	1 layer, 1/2 in. thick	1-1/2 in.
1	1-5/8	1 layer, 3/4 in. thick	Optional
2	1-5/8	2 layers, 1/2 in. thick	Optional
2	1-5/8	2 layers, 5/8 in. thick	Optional
2	3-1/2	1 layer, 3/4 in. thick	3 in.
3	1-5/8	3 layers, 1/2 in. thick	Optional
3	1-5/8	2 layers, 3/4 in. thick	Optional
3	1-5/8	3 layers, 5/8 in. thick	Optional
4	1-5/8	4 layers, 5/8 in. thick	Optional
4	1-5/8	4 layers, 1/2 in. thick	Optional
4	2-1/2	2 layers, 3/4 in. thick	2 in.

CANADIAN GYPSUM COMPANY — 1/2 in. thick Type C, IP-X2 or IPC-AR; WRC, 5/8 in. thick Type AR, C, IP-AR, IP-X1, IP-X2, IPC-AR, SCX, SHX, WRX or WRC; 3/4 in. thick Type IP-X3, ULTRACODE, ULTRACODE SHC or ULTRACODE WRC.
 UNITED STATES GYPSUM CO — 1/2 in. thick Type C, IP-X2, IPC-AR or WRC; 5/8 in. thick Type SCX, SHX, WRX, IP-X1, AR, C, WRC, FRX-G, IP-AR, IP-X2, IPC-AR; 3/4 in. thick Type IP-X3, ULTRACODE, ULTRACODE SHC or ULTRACODE WRC.
 USG MEXICO S A DE C V — 1/2 in. thick Type C, IP-X2, IPC-AR or WRC; 5/8 in. thick Type AR, C, IP-AR, IP-X1, IP-X2,

FIRE RESISTANCE RATINGS - ANS/UL 263 (BXUV)

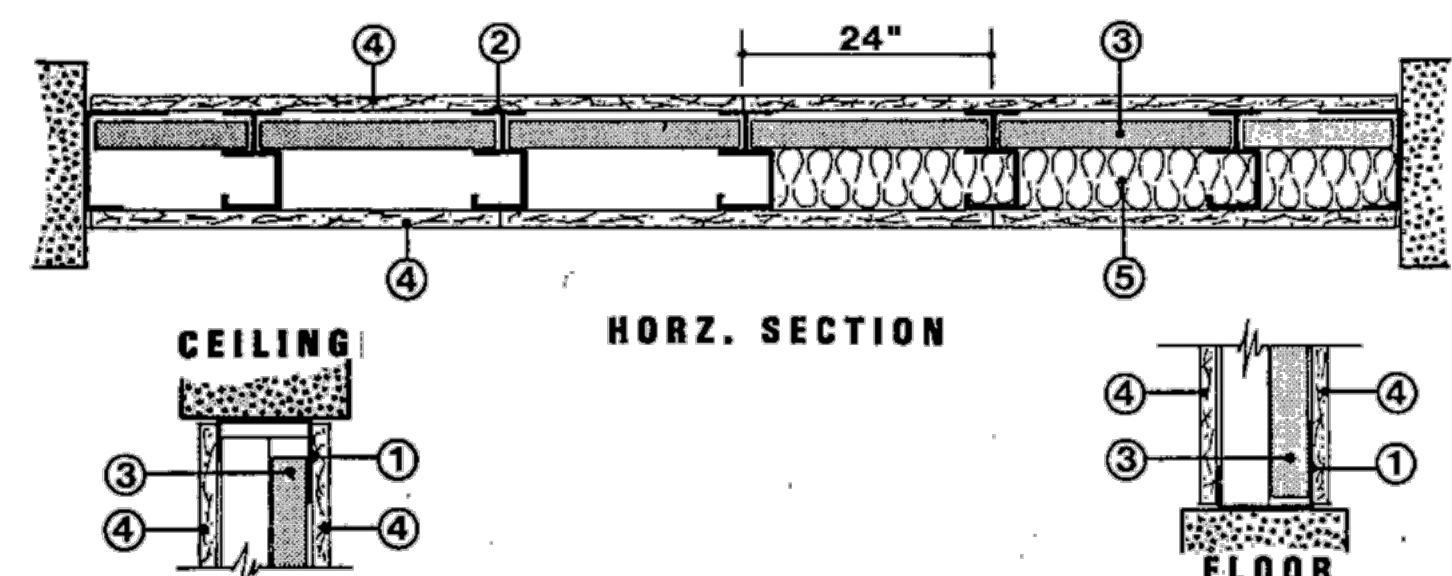
- IPC-AR, SCX, SHX, WRX, WRC or 3/4 in. thick Type IP-X3, ULTRACODE, ULTRACODE SHC or ULTRACODE WRC.
- Gypsum Board*** — (As an alternate to Item 4) — 5/8 in. thick, 2 ft. wide, tongue and groove edge, applied horizontally as the outer layer to one side of the assembly. Secured as described in Item 5. Joint covering (Item 7) not required.
 CANADIAN GYPSUM COMPANY — Type SHX.
 UNITED STATES GYPSUM CO — Type SHX.
 USG MEXICO S A DE C V — Type SHX.
 - Fasteners** — (Not shown) — Type 5 or S-12 steel screws used to attach panels to studs (Item 2) or furring channels (Item 6). **Single layer systems:** 1 in. long for 1/2 and 5/8 in. thick panels or 1-1/4 in. long for 3/4 in. thick panels, spaced 8 in. OC when panels are applied horizontally, or 8 in. OC along vertical and bottom edges and 12 in. OC in the field when panels are applied vertically. **Two layer systems:** First layer- 1 in. long for 1/2 and 5/8 in. thick panels or 1-1/4 in. long for 3/4 in. thick panels, spaced 16 in. OC. Second layer- 1-5/8 in. long for 1/2 in., 5/8 in. thick panels or 2-1/4 in. long for 3/4 in. thick panels, spaced 16 in. OC with screws offset 8 in. from first layer. **Three-layer systems:** First layer- 1 in. long for 1/2 in., 5/8 in. thick panels, spaced 24 in. OC. Second layer- 1-5/8 in. long for 1/2 in., 5/8 in. thick panels, spaced 24 in. OC. Third layer- 2-1/4 in. long for 1/2 in., 5/8 in. thick panels or 2-5/8 in. long for 5/8 in. thick panels, spaced 12 in. OC. Screws offset min 6 in. from layer below. **Four-layer systems:** First layer- 1 in. long for 1/2 in., 5/8 in. thick panels, spaced 24 in. OC. Second layer- 1-5/8 in. long for 1/2 in., 5/8 in. thick panels, spaced 24 in. OC. Third layer- 2-1/4 in. long for 1/2 in. thick panels or 2-5/8 in. long for 5/8 in. thick panels, spaced 24 in. OC. Fourth layer- 2-5/8 in. long for 1/2 in. thick panels or 3 in. long for 5/8 in. thick panels, spaced 12 in. OC. Screws offset min 6 in. from layer below.
 - Furring Channels** — (Optional, not shown, for single or double layer systems) — Resilient furring channels fabricated from min 25 MSG corrosion-protected steel, spaced vertically a max of 24 in. OC. Flange portion attached to each intersecting stud with 1/2 in. long Type S-12 steel screws. Not for use with Item 4A.
 - Steel Framing Members (Not Shown)*** — (Optional on one or both sides, not shown, for single or double layer systems) — As an alternate to Item 6, furring channels and Steel Framing Members as described below:
 - Furring Channels** — Formed of No. 25 MSG galv steel, 2-3/8 in. wide by 7/8 in. deep, spaced max. 24 in. OC perpendicular to studs. Channels secured to studs as described in Item 5. Gypsum board attached to furring channels as described in Item 5. Not for use with Item 4A.
 - Steel Framing Members*** — Used to attach furring channels (Item 6a) to studs (Item 2). Clips spaced max. 48 in. OC, and secured to studs with No. 8 x 1-1/2 in. minimum self-drilling, S-12 steel screw through the center grommet. Furring channels are friction fitted into clips.
 PAC INTERNATIONAL INC — Type RSIC-1.
 - Joint Tape and Compound** — Vinyl or casein, dry or premixed joint compound applied in two coats to joints and screw heads of outer layers. Paper tape, non 2 in. wide, embedded in first layer of compound over all joints of outer layer panels. Paper tape and joint compound may be omitted when gypsum panels are supplied with a square edge.
 - Siding, Brick or Stucco** — (Optional, not shown) — Aluminum, vinyl or steel siding, brick veneer or stucco, meeting the requirements of local code agencies, installed over gypsum panels. Brick veneer attached to studs with corrugated metal wall ties attached to each stud with steel screws, not more than each sixth course of brick.
 - Caulking and Sealants*** — (Optional, not shown) — A bead of acoustical sealant applied around the partition perimeter for sound control.
 UNITED STATES GYPSUM CO — Type AS



- Studs** — Channel — shaped 1 5/8 in. wide with 1 3/8 in. legs and 1/4 in. stiffening flanges. Fabricated from No. 25 MSG galv steel. Studs to be cut 1/4 in. less than assembly height.
- Bracing** — Cut from the steel runners, min. 4-1/4 in. long, fastened

LOOK FOR THE UL MARK ON PRODUCT

Design No. U467
Nonbearing Wall Rating — 2 HR.



- Floor and Ceiling Runners** — "J" shaped, 2-1/2 in. wide with unequal legs of 1 in. and 2 in., fabricated from 24 MSG galv steel. Runners attached to structural supports with steel fasteners located not greater than 2 in. from ends and not greater than 24 in. OC.
- Steel Studs** — "C-H" shaped studs, 2-1/2 in. wide by 1-1/2 in. deep, fabricated from 25 MSG galv steel spaced 24 in. OC. Vertically restrained walls require studs to be cut 3/8 in. less than floor to ceiling height.
- Gypsum Board*** — 1 in. thick gypsum wallboard liner panels, supplied in nominal 24 in. widths. Vertical edges inserted in "H" shaped section of "C-H" studs. Free edge of end panels attached to long leg of "J" runners with 1-5/8 in. long Type S steel screws spaced not greater than 12 in. OC.
 CANADIAN GYPSUM COMPANY — Type SLX.
 UNITED STATES GYPSUM CO — Type SLX.
 USG MEXICO S A DE C V — Type SLX.
- Gypsum Board*** — 1/2 in. or 5/8 in. 4 ft wide applied vertically and attached to studs and runners with 1 in. long Type S steel screws spaced 12 in. OC.
 AMERICAN GYPSUM CO — 1/2 or 5/8 in. Type AG-C, 5/8 in. Type AGX-1.
 BEIJING NEW BUILDING MATERIALS CO LTD — Type DBX-1.
 BPB AMERICA INC — Types 5/8 in. EGRG or 1/2 in. ProRoc Type C.
 BPB CANADA INC — 1/2 in. ProRoc Type C.
 CANADIAN GYPSUM COMPANY — 1/2 in. Type C, IP-X2, IPC-AR, 5/8 in. Types AR, C, IP-AR, IP-X1, IP-X2, IPC-AR, SCX, SHX, WRX.
 G-P GYPSUM CORP, SUB OF
 GEORGIA-PACIFIC CORP — Types 5, 9, C, DGG, DAP, DD, DA, GPF56.
 LAFARGE NORTH AMERICA INC — Types LGFC2, LGFC2A, LGFC6, LGFC6A, LGFC-C, LGFC-C/A.
 NATIONAL GYPSUM CO — Types FSW-C, FSMR-C.
 PABCO GYPSUM, DIV OF
 PACIFIC COAST BUILDING PRODUCTS INC — Types C, PG-C or PG-9.
 REPUBLIC GYPSUM CO — Type RG-C.
 SIAM GYPSUM INDUSTRY (SARABURI) CO LTD — Type EX-1.
 STANDARD GYPSUM L L C — Type SG-C.
 TEMPLE-INLAND FOREST PRODUCTS CORP — Type TG-C.
 UNITED STATES GYPSUM CO — 1/2 in. Types C, FRX-G, IP-X2, IPC-AR, 5/8 in. Type AR, C, IP-AR, IP-X1, IP-X2, IPC-AR, SCX, SHX or WRX.
 USG MEXICO S A DE C V — 1/2 in. Types C, IP-X2, IPC-AR, 5/8 in. Type AR, C, IP-AR, IP-X1, IP-X2, IPC-AR, SCX, SHW or WRX.

- Gypsum Board*** — (As an alternate to Item 4) — Nom 3/4 in. thick, 4 ft wide, installed as described in Item 4 with screw length increased to 1-1/4 in.
 CANADIAN GYPSUM COMPANY — Types AR, IP-AR.
 UNITED STATES GYPSUM CO — Types AR, IP-AR.
 USG MEXICO S A DE C V — Types AR, IP-AR.



Engineer Of Record:
 GENESIS FORTUNE, LLC
 CONSULTING ENGINEERING
 1395 BRICKELL AVE. SUITE 800
 MIAMI, FL 33131
 TEL: 305.778.7342
 EMAIL: jorge@genesisfortune.com
 CA# 32749

Consultant:
 FAUSTO GUERRERO, P.E.
 PROFESSIONAL ENGINEER
 19552 SW 133rd Avenue
 Miami, FL 33177
 Office: (786) 443-1685
 fengengineering@aol.com

Consultant:
 (Blank)

This item has been digitally signed and sealed by Fausto Guerrero, P.E. on the date adjacent to the seal. Printed copies of this document are not considered signed and sealed and the signature must be verified on any electronic copies.

SEAL / SIGNATURE / DATE:

PROJECT / OWNER INFORMATION:

600 NW 5th STREET
 GENERAL COMMERCIAL
 INTERIOR REMODELING
 600 NW 5th St.
 MIAMI, FL 33128

REVISIONS:

PROJECT NO.:
 DWG. FILE:
 DATE: 5.8.21
 SHEET TITLE:

DETAILS

SCALE:
 SHEET NO.:

A-7.1