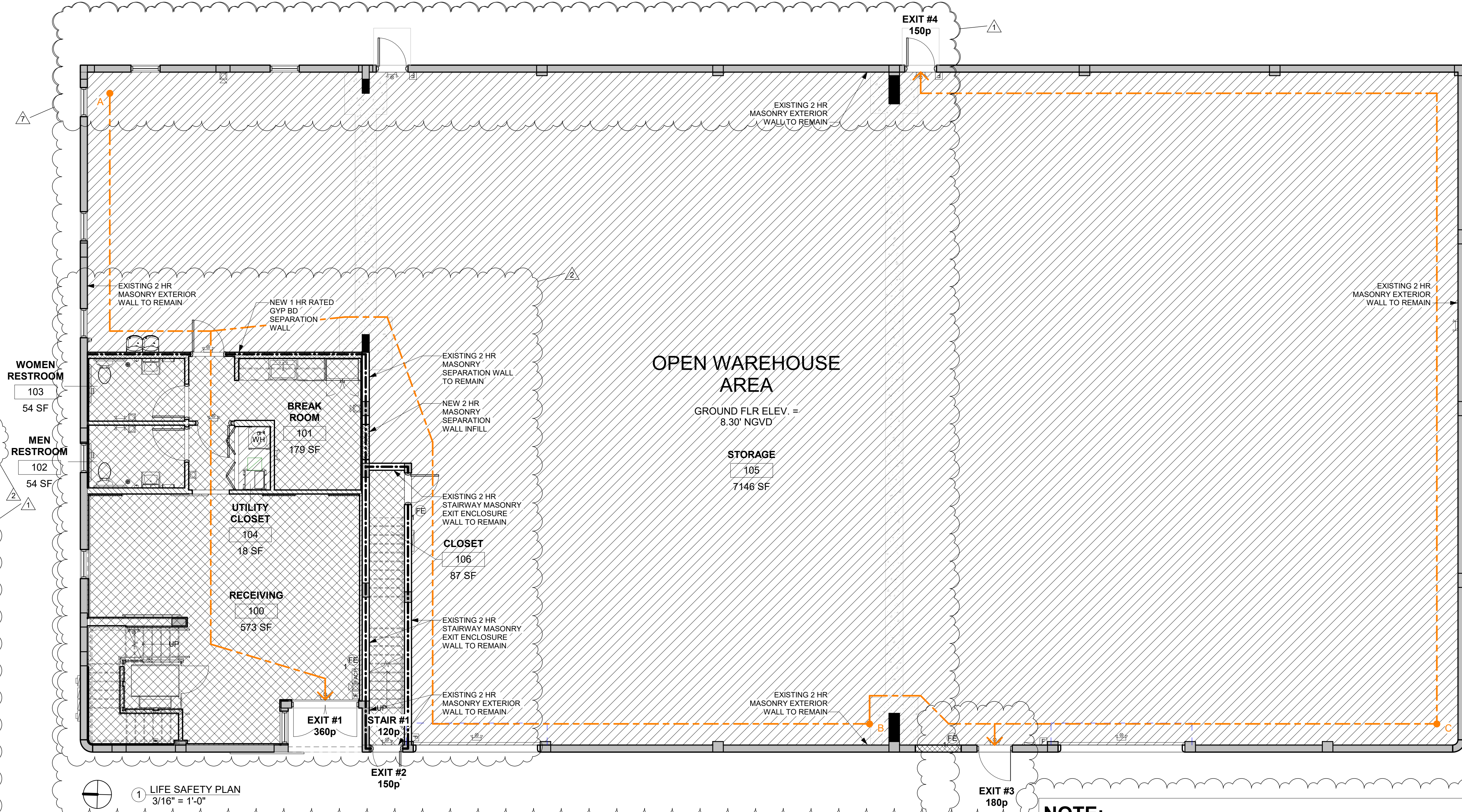


LIFE SAFETY LEGEND	
SYMBOL	DESCRIPTION
	EXIT SIGN (WHITE)
	EMERGENCY LIGHT W/ 90 MIN. BATTERY BACK-UP/ WALL MTD. 8'-0" TO 10'-0" AFF (WHITE)
	EMERGENCY EXIT/LIGHT COMBO W/ 90 MIN. BATTERY BACK-UP/ WALL MTD. 8'-0" TO 10'-0" AFF (WHITE)
	FIRE EXTINGUISHER
	SMOKE DETECTOR
	MANUAL PULL STATION
	FIRE ALARM CONTROL PANEL
	HORN / STROBE
	STROBE LIGHT
EXIT #	EGRESS DESIGNATION
	POINT OF TRAVEL DISTANCE
	TRAVEL DISTANCE
	RATED WALL, SEE PLAN FOR PROVIDED RATING IN HOURS

*ALL LIGHTING & LIFE SAFETY FIXTURES, REFER TO CBMC SPECIFICATION PACKAGE WITHIN SPEC-BOOK FOR REQUIREMENTS AND PROCUREMENT.
 *ALL "EX" AT SYMBOL DESIGNATES EXISTING FIXTURE TO REMAIN



EGRESS CAPACITY CALCULATIONS	
EX EXIT #1	72/2 = 360
EX EXIT #2	30/2 = 150
NEW EXIT #3	36/2 = 180
EX EXIT #4	30/2 = 150
EX STAIR #1	36/3 = 120

TRAVEL DISTANCE	
POINT 'A' TO EXIT #1	75'-0"
POINT 'A' TO EXIT #3	147'-0"
COMMON PATH	32'-1"
POINT 'B' TO EXIT #1	140'-4"
POINT 'B' TO EXIT #3	17'-8"
COMMON PATH	N/A
POINT 'C' TO EXIT #3	43'-10"
POINT 'C' TO EXIT #4	110'-8"
COMMON PATH	N/A

MEANS OF EGRESS	
NUMBER OF EXITS	
GROUND FLOOR EXITS = 3 PROVIDED	
SECOND FLOOR ACCESS TO EXITS = 1 PROVIDED	
-39.2.4.4 NUMBER OF MEANS OF EGRESS	
EXIT ACCESS TRAVEL DISTANCE = 200 FT, GROUND FLOOR	
-TABLE 1017.2 EXIT ACCESS TRAVEL DISTANCE	
-39.2.6.2 ARRANGEMENT OF MEANS OF EGRESS	

LIFE SAFETY NOTES

- ONE "UL" LISTED 2A-10B TYPE FIRE EXTINGUISHER SHALL BE INSTALLED FOR EACH 3,000 SQ. FT. OF FLOOR AREA, 75 FT. OF TRAVEL OR PART THEREOF. TOP OF FIRE EXTINGUISHER NOT TO EXCEED 5' A.F.F. SEE FLOOR PLAN FOR LOCATION(S). VERIFY EXTINGUISHER TYPE AND LOCATION WITH FIRE MARSHAL PRIOR TO ORDERING.
- ALL INTERIOR WALL & CEILING FINISHES TO COMPLY WITH NFPA 101 SECTION 39.3.3.2, SECTION 10.2 AND FBC TABLE 803.11 AS FOLLOWS:
 - A. INTERIOR EXIT STAIRWAYS AND RAMPS AND EXIT PASSAGEWAYS CLASS B**
NOTE: CLASS C INTERIOR FINISH MATERIALS SHALL BE PERMITTED FOR WAINSCOTING OR PANELING OF NOT MORE THAN 1,000 SQUARE FEET OF APPLIED SURFACE AREA IN THE GRADE LOBBY WHERE APPLIED DIRECTLY TO A NONCOMBUSTIBLE BASE OR OVER FURRING STRIPS APPLIED TO A NONCOMBUSTIBLE BASE AND FIREBLOCKED AS REQUIRED BY SECTION 803.13.1.
 - B. CORRIDORS AND ENCLOSURE FOR EXIT ACCESS STAIRWAYS AND RAMPS CLASS B.**
 - C. ROOMS AND ENCLOSED SPACES CLASS C**
- ALL FLOOR FINISHES TO COMPLY WITH NFPA 101 SECTION 39.3.3.3 AND FBC SECTION 804.
- FURNISHINGS, DECORATIONS AND SCENERY: ALL FABRICS, FILMS, DRAPERIES AND CURTAINS SHALL MEET THE FLAME PROPAGATION PERFORMANCE CRITERIA CONTAINED IN NFPA 701.
- UPHOLSTERED FURNITURE SHALL BE RESISTANT TO A CIGARETTE IGNITION PER NFPA 101 SECTION 10.3.2.1.
- INTERIOR FLOOR FINISH MATERIALS SHALL HAVE SLIP RESISTANCE BETWEEN 0.5 & 0.9 STATIC COEFFICIENT OF FRICTION.
- ANY FLOOR LEVEL CHANGES IN EXCESS OF 1/4" AT DOORWAYS SHALL BE BEVELED WITH A SLOPE NOT STEEPER THAN 1 IN 2.
- ACCESSIBLE ROUTE SHALL BE MIN. 36" WIDE WITH CHANGE IN LEVEL NOT GREATER THAN 1/2" HIGH THROUGHOUT.
- PENETRATIONS THROUGH FIRE RATED WALLS SHALL BE SEALED WITH AN APPROVED FIRE CAULKING. (HILTI FS-ONE MAX FIRESTOP INTUMESCENT SEALANT).
- ONE-HOUR (1-HR) FIRE-RATED WALLS, DEMISING WALLS OR PARTY WALLS SHALL MEET THE REQUIREMENTS OF THE GYPSUM ASSOCIATION FILE #WP 1200; FIRE TEST: FM WP-45, 6-19-88; OSU T-1770, 8/61.
- ALL WALLS TO BE FIRE BLOCKED @ 8'-0" ON CENTER VERTICALLY.

FIRE PROTECTION SCHEDULE

AUTOMATIC SPRINKLER SYSTEM	NO		
FIRE ALARM SYSTEM	YES		
FIRE EXTINGUISHER SCHEDULE			
SYMBOL	TYPE	REQ'D	PROVIDED
FE	'UL' LISTED 2A-10BC TYPE PORTABLE FIRE EXTINGUISHER.	4	4

CLASSIFICATION OF WORK - FFPC/NFPA 101	MODIFICATION
CODE REFERENCE	Florida Fire Prevention Code 7th Edition (2020) 2018 edition of the Life Safety Code (NFPA 101)

OCCUPANCY LOAD SCHEDULE - FBC

TABLE 1004.5	GROUND FLOOR	OCC. #
STORAGE, STOCK, SHIPPING AREAS- 300 SF GROSS	SHIPPING AREAS- 947 SF GROSS	4
	STORAGE AREAS- 7,164 SF GROSS	24
BUSINESS AREAS - 150 SF GROSS	SHIPPING AREAS- 769 SF GROSS	3
	STORAGE AREAS- 85 SF GROSS	1
	BUSINESS AREAS- 646 SF GROSS	5
TOTAL OCCUPANT LOAD		37

OCCUPANCY LOAD SCHEDULE - FFPC/NFPA 101

TABLE 7.3.1.2	GROUND FLOOR	OCC. #
MERCANTILE USE FLOORS OR PORTIONS OF FLOOR USED ONLY FOR STORAGE, RECEIVING, AND SHIPPING, AND NOT OPEN TO THE GENERAL PUBLIC - 300 SF GROSS	MERCANTILE USE- 947 SF GROSS	4
	STORAGE USE- 7,164 SF GROSS	24
STORAGE USE IN MERCANTILE OCCUPANCIES - 300 SF GROSS	MERCANTILE USE- 769 SF GROSS	3
	STORAGE USE- 85 SF GROSS	1
BUSINESS USE 150 SF GROSS	BUSINESS USE- 646 SF GROSS	5
	TOTAL OCCUPANT LOAD	37

NOTE: HIGH-PILED STORAGE OF COMBUSTIBLES OVER AN AREA EXCEEDING 2,500 SF IN AREA AND STORAGE COMMODITIES CLASSIFIED AS GROUP A PLASTICS IN EXCESS OF 5 FT IN HEIGHT OVER AN AREA EXCEEDING 2,500 SF IN AREA SHALL NOT BE PERMITTED IN THIS FACILITY TO COMPLY WITH FFPC NFPA 1 SECTION 13.3.2.27.

DAFA Design, LLC
 680 NE 64th Street
 Suite PH-7
 Miami, FL 33138
 www.dafa-design.com
 786.508.2603

DAFA
 Dyman and Feinberg Architecture

ALTERATIONS TO AN EXISTING WAREHOUSE BUILDING FOR:
 1943 NW 97TH AVENUE
 MIAMI, FL 33172

No.	Description	Date
1	REVIEW COMMENTS	06/15/23
2	REVIEW COMMENTS	07/10/23
6	REVIEW COMMENTS	11/21/23
7	REVIEW COMMENTS	12/08/23

KENNETH C. DYMAN R.A.

AR 99987

GROUND FLOOR LIFE SAFETY PLAN

Date: 03/17/23
 Drawn by: LGM
 Checked by: KCD

A1.0

Scale: As indicated

12/11/2023 8:39:20 AM