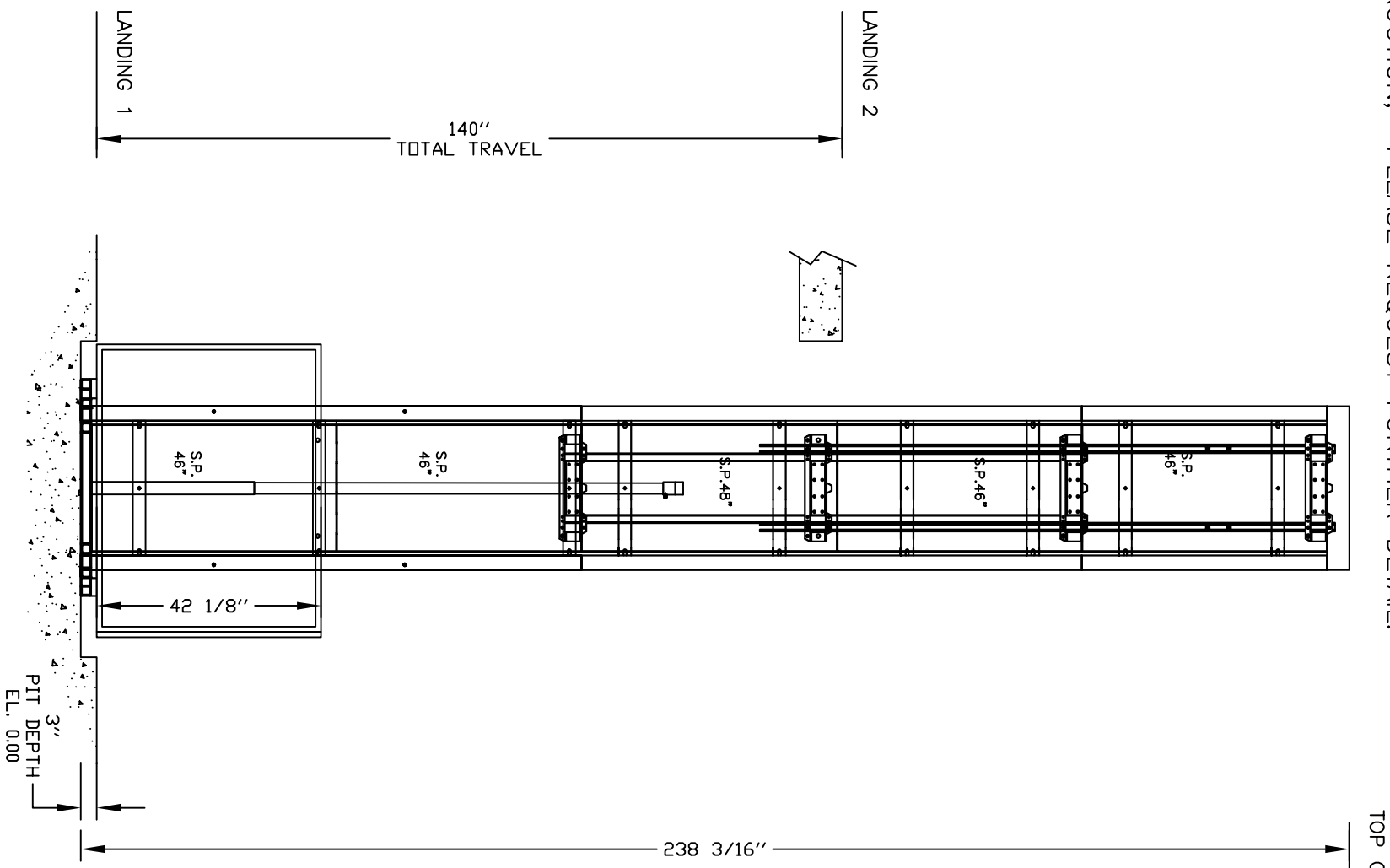
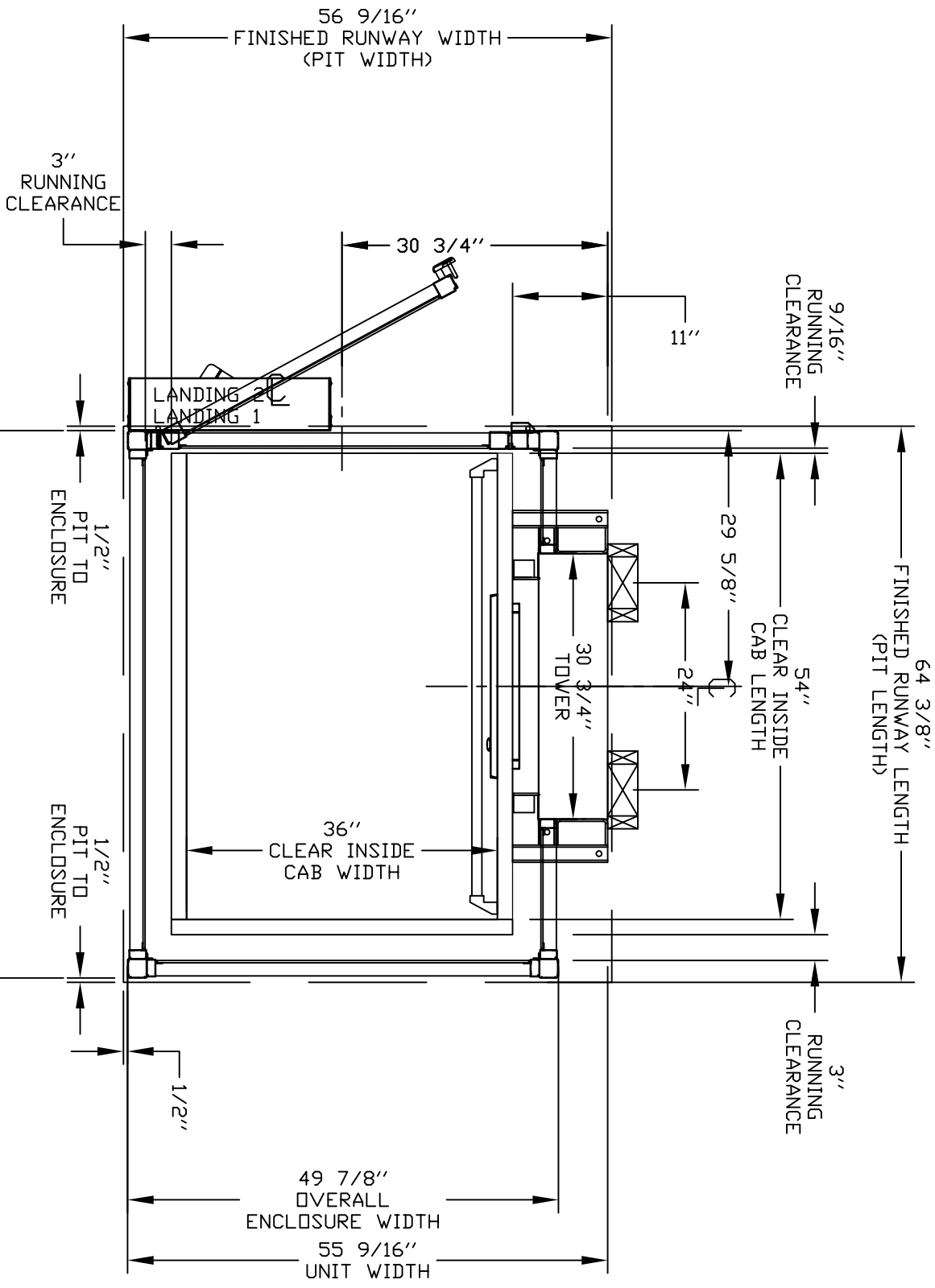
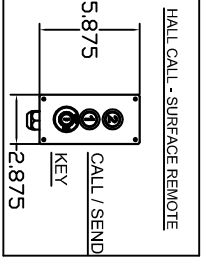


ENCLOSURE DOOR WIDTH DOESN'T ALWAYS MATCH INSIDE PLATFORM DIMENSION.
 IF THERE ARE CONCERNS ABOUT THE DOOR SWING CONFLICTING WITH AN
 OBSTRUCTION, PLEASE REQUEST FURTHER DETAIL.

TYPICAL PLAN



TOWER DETAIL



PRELIMINARY DRAWING ONLY DRAWING APPROVAL:

THIS DRAWING REFLECTS OUR INTERPRETATION OF THE INFORMATION PROVIDED BY THE DEALER ON THE ORDER FORM. THIS INFORMATION IS THE DEALER'S RESPONSIBILITY, AND IS THE BASIS FROM WHICH THIS LIFT IS DESIGNED AND MANUFACTURED. PLEASE INDICATE THE REQUESTED ACTION BY CHECKING ONE OF THE FOLLOWING BOXES AND SIGNING BELOW TO AUTHORIZE COMPLETION OF THIS ORDER.

- APPROVED WITH NO EXCEPTIONS
MANUFACTURE PRODUCT AS PER DRAWING
- APPROVED WITH EXCEPTIONS, NO REAPPROVAL
REQUIRED
- APPROVED WITH EXCEPTIONS, NO REAPPROVAL
REQUIRED
MAKE CHANGES AS NOTED, NO REAPPROVAL DRAWING REQUIRED
- CHANGE AS NOTED, REAPPROVAL REQUIRED
MAKE CHANGES AS NOTED, SEND CORRECTED DRAWING FOR
REAPPROVAL BEFORE MANUFACTURE

CHANGES REQUEST:

1. _____
2. _____
3. _____
4. _____

SIGNATURE: _____ DATE: _____
 CAUTION: ONCE THE DRAWING IS APPROVED, JOB CANCELLATION FEES WILL APPLY

GENERAL ARRANGEMENT

ENCLOSED VERTICAL WHEELCHAIR PLATFORM LIFT

CUSTOMER:
 FLORIDA LIFTS LLC

PROJECT:
 1943 NW 97TH AVE PROJECT

ADDRESS:
 1943 NW 97TH AVENUE, MIAMI
 FLORIDA, USA, 33172

OFFICE USE ONLY:	DATE:
CONFIGURATION VERSION STAMP:	REVISION DATE:
MODULE VERSION STAMP:	COMPLETED BY:
0.0	05-17-24
B-S-871	OPERATIONAL

Part No.	Variant No.	Job No.	SHEET No.
V-1504 ENCLOSURE	1 1 30591	P000000	1 OF 4



PROVISIONS BY OTHERS

SPECIFICATIONS

GENERAL

HOISTWAY - THE HOISTWAY MUST BE DESIGNED AND BUILT IN ACCORDANCE WITH "SAFETY STANDARD FOR PLATFORM LIFTS AND STAIRWAY CHAIRLIFTS" OR "SAFETY CODE FOR ELEVATORS AND ESCALATORS" AND ALL STATE AND LOCAL CODES.

PLUMB RUNWAY - DUE TO CLOSE RUNNING CLEARANCES OWNER/AGENT MUST ENSURE THAT HOISTWAY AND PIT (WHERE PROVIDED) ARE LEVEL, PLUMB (-/+ 1/8" (3 mm)) AND SQUARE AND ARE IN ACCORDANCE WITH THE DIMENSIONS ON THESE DRAWINGS.

MINIMUM OVERHEAD CLEARANCE- OWNER/AGENT MUST ENSURE MINIMUM OVERHEAD CLEARANCE IS IN COMPLIANCE WITH CODES.

CONSTRUCTION SITE- OWNER/AGENT TO PROVIDE ALL MASONRY, CARPENTRY AND DRYWALL WORK AS REQUIRED AND SHALL PATCH AND MAKE GOOD (INCLUDING FINISH PAINTING) ALL AREAS WHERE WALLS/FLOORS MAY REQUIRE TO BE CUT, DRILLED OR ALTERED IN ANY WAY TO PERMIT THE PROPER INSTALLATION OF THE LIFT.

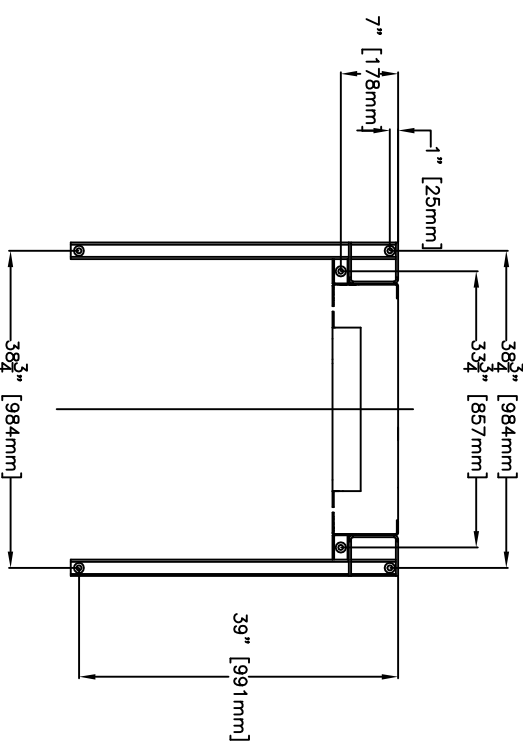
DIMENSIONS- CONTRACTOR/CUSTOMER TO VERIFY ALL DIMENSIONS AND REPORT ANY DISCREPANCIES TO OUR OFFICE IMMEDIATELY.

STRUCTURAL

FLOOR/SUPPORT WALL LOADS- CONTRACTOR TO ASSURE THAT BUILDING AND SHAFT WILL SAFELY SUPPORT ALL LOADS IMPOSED BY THE LIFT EQUIPMENT. REFER TO THE LOAD DIAGRAM ON THIS DRAWING.

MAST TO BE SECURELY FASTENED- WHERE REQUIRED THE MAST MUST BE SECURELY FASTENED TO THE STRUCTURAL SUPPORT WALL. REFER TO WALL / FLOOR SUPPORT LOAD DIAGRAM AND WALL LAG DIMENSIONS ON THIS DRAWING.

WHERE DOORS ARE REQUIRED- SUITABLE LINTELS MUST BE PROVIDED BY OWNER/AGENT. DOOR FRAMES ARE NOT DESIGNED TO SUPPORT OVERHEAD WALL LOADS.



ELECTRICAL

GENERAL- ELECTRICAL EQUIPMENT AND WIRING TO COMPLY WITH SECTION 38 OF CSA C22.1 (CANADA) OR SECTION 620 OF NEC ANSI/NFPA 70 (USA).

POWER SUPPLY- 120VAC, 20A, 60HZ, 1PH CIRCUIT THROUGH A FUSE DISCONNECT WITH AUXILIARY CONTACT ON MAIN POWER SUPPLY. PROVIDE TWO 18 AWG CONDUCTORS BETWEEN CONTACT AND CONTROLLER.

LIGHTING- LIGHTING OF 100 LX MIN. AT PLATFORM AND LANDINGS. LIGHTING WITH SWITCH AND ELECTRICAL GFCI OUTLET IN HOISTWAY PIT.

PHONE- IF A TELEPHONE CIRCUIT IS REQUIRED, JACK OR PHONE ARE PROVIDED ON THE CAR. A DEDICATED ANALOG PHONE LINE (NO VOIP) IS REQUIRED TO BE PROVIDED BY OTHERS TO THE CONTROLLER FOR VOIP, PLEASE CONTACT SAVARIA. SAVARIA LINK REMOTE MONITORING - WIRELESS

ENSURE THAT YOU HAVE A WIRELESS SIGNAL WITH INTERNET CAPABILITY IN THE VICINITY OF UNIT'S CONTROLLER

ENTRANCES

UPPER LANDING GATES- WHERE REQUIRED, SMOOTH SOLID BARRIERS ARE TO BE SUPPLIED AND INSTALLED ON BOTH SIDES OF ENTRANCE AT UPPER LEVEL AND MUST BE A MINIMUM OF 42" (1067 mm) HIGH. ENTRANCE ASSEMBLY MUST BE IN PLACE PRIOR TO THIS PROVISION. FASCIA PANEL BELOW UPPER LEVEL ENTRANCE- WHERE REQUIRED, FASCIA PANEL MUST BE FASTENED TO A SOLID WALL AND BE PERPENDICULAR TO THE FLOOR AND WALLS. HOISTWAY FASCIA IS NOT SELF-SUPPORTING FOR LONG, CONTINUOUS RUNS VOID OF ENTRANCES. ADEQUATE SUPPORT FOR THE FASCIA MUST BE PROVIDED.

ENTRANCE ASSEMBLIES- ENTRANCE ASSEMBLIES MUST BE ADJUSTED TO ALIGN WITH PLATFORM AND INTERLOCK EQUIPMENT. OTHERS TO ALLOW AN ADEQUATE ROUGH OPENING.

RETURN WALLS- RETURN WALLS AT ENTRANCES MUST BE BUILT-IN BY OTHERS AFTER ENTRANCE ASSEMBLIES ARE IN PLACE. ENTRANCE ASSEMBLY MUST BE SECURELY FASTENED TO WALLS.

GENERAL

CLASSIFICATION: Enclosed Vertical Wheelchair Platform Lift
APPLIED CODE: ASME A18.1-2017 Section 2 Pub
SPECIAL NOTE:

MODEL: V-1504 Enclosure
CAPACITY: 750 lbs (341 kg)
NOMINAL SPEED: 20 fpm (0.102 m/s)
TRAVEL: 140" (3556 mm)
PIT DEPTH: 3" (76 mm)
PLATFORM SIZE: 36" X 54" (914 mm X 1372 mm)
POWER SUPPLY: 120V, 20A, 60HZ, SINGLE PHASE
BATTERY BACK UP: down direction only

JACK UNIT
STROKE: 72" (1829 mm)
PLUNGER O/D: 1.5" (38 mm)
CYL. O/D: 2.125" (54 mm)
CYL. I/D: 1.75" (44 mm)

CONTROLLER
MODEL: V-1504
TYPE: CPFS
QPS #: LR1390-7R4
AMP: 100 A
MFR.: SAVARIA

DOORS / GATES / CALL STATIONS

DOOR TYPE
ENTRANCE SIDE
DOOR SWING
DOOR INSERT
LOCK TYPE
AUTO DOOR OPENER
CUSTOM DOOR WIDTH
CUSTOM DOOR HEIGHT
IN FRAME CALL STN.
CALL STN. TYPE
CALL STN. KEYPAD
CALL STN. STOP BUTTON
CALL STN. MOUNTING
INSULATED PRODOOR KIT

	LANDING 1	LANDING 2	LANDING 3	LANDING 4
Enclosure 80" Door	0	0		
Laminated Glass	1h	1h		
WR500 Lock (24V)	WR500 Lock (24V)	WR500 Lock (24V)		
Commander Auto Opener	Commander Auto Opener	Commander Auto Opener		
Call/Send Buttons	no	no		
Off Pos. Removable	Off Pos. Removable	Off Pos. Removable		
Surface Mounted Remote	Surface Mounted Remote	Surface Mounted Remote		

OPTIONS PROVIDED

EMERGENCY PENDENT PLUG IN MANUAL LOWERING BOX
WINGS: no
TOUCH UP PAINT: 7 can(s)
BUILDING: Public Building
LIGHT CURTAIN: no
PHONE OR PHONE PLUG: No Phone, Plug Incl
FLOOD SWITCH: no
REMOTE MACHINE ROOM: Not required
LOCATION: INDOOR

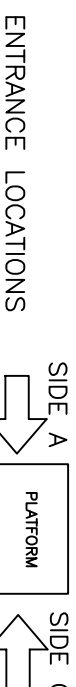
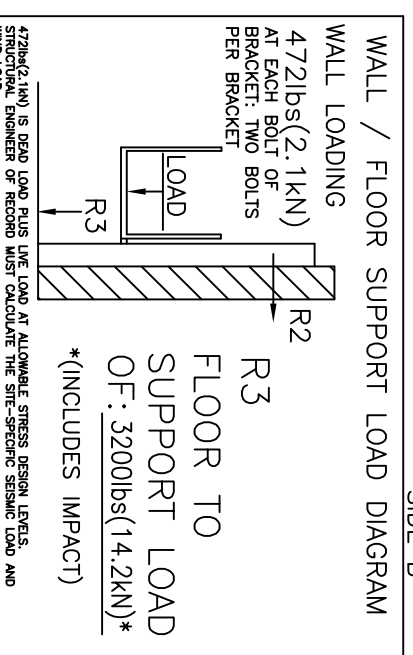
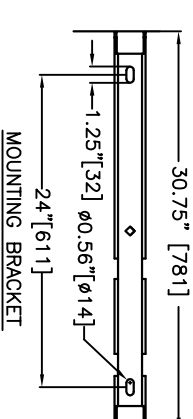
RAMP: No Ramp Required
EXTRA KEYS: 0
WALL FASTENERS: log
UNDERPAN SENSOR: no
UNIT COLOUR: Custom Colors
FLOOR: Anti-Skid Paint (Grey)
FOLD SEAT: no

POWER UNIT

MOTOR: 3.0 HP, 24V DC
FLOW: 1.15 Gal/min (4.35l/min)
CAB FINISH: Steel W Paint

HYDRAULIC DATA

OIL TYPE: UNIVIS 32 INDOOR
GALLONS REQ'D: DEXRON ATF OUTDOOR
MAXIMUM WORKING PRESSURE: 1.0 Gal (3.79 L)
RELIEF PRESSURE: 2500 psi (17.2 MPa)
MAXIMUM RELIEF PRESSURE: WPx125% MAX.
HYDRAULIC HOSE: 2500 psi (17.2 MPa)
BURST: 1/4" (6.4 mm) ID
FITTINGS: 20000 psi (137.9 MPa)
SUSPENSION CHAIN: 1/4" (6.4 mm) NPT MALE
2X #50 ROLLER CHAIN
BREAKING STRENGTH: 7171 lbs (31.9 kN) each
SAFETY BRAKE: TYPE 'A'



LOADS CALCULATED ON BASED ON ANCHOR POINTS EVERY 48" EVERY TOWER SECTION NEEDS TO BE ANCHORED. IF SPACING IS INCREASED, LOADS PER BRACKETS WILL INCREASE ACCORDINGLY.

DATA SHEET

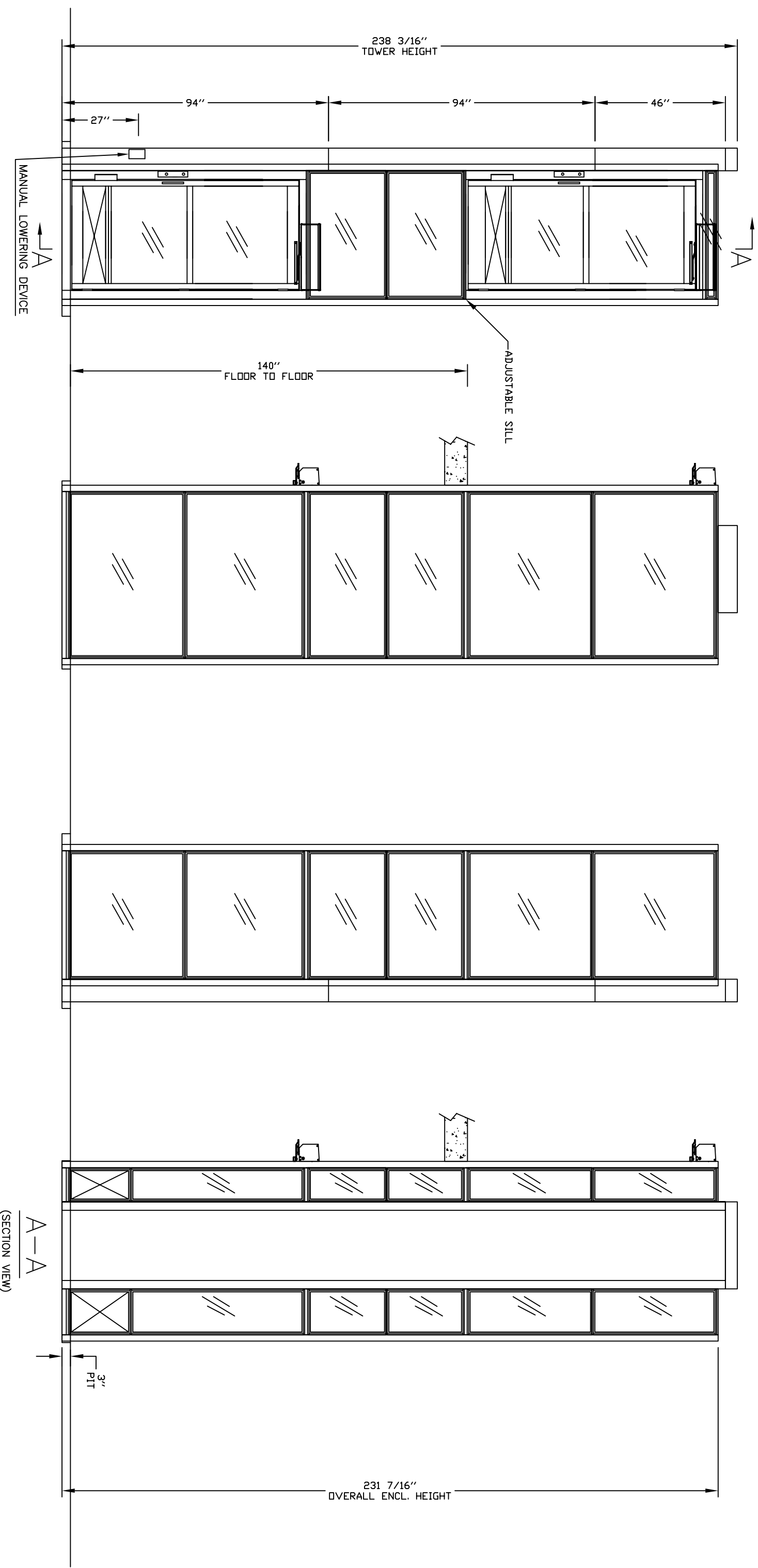
CUSTOMER: FLORIDA LIFTS LLC
PROJECT: 1943 NW 97TH AVE PROJECT
ADDRESS: 1943 NW 97TH AVENUE, MIAMI FLORIDA, USA, 33172

REVISION DATE: 05-17-24
COMPLETED BY: [Signature]
JOB No.: P000000
SHEET No.: 2 OF 4

Part No.: V-1504 ENCLOSURE
Variant No.: 1 1 3059 1



PANEL DRAWING



INSERT STYLE: DOOR & GATE
 SHEET METAL
 LAMINATED GLASS

INSERT STYLE: Enclosure
 SHEET METAL
 LAMINATED GLASS

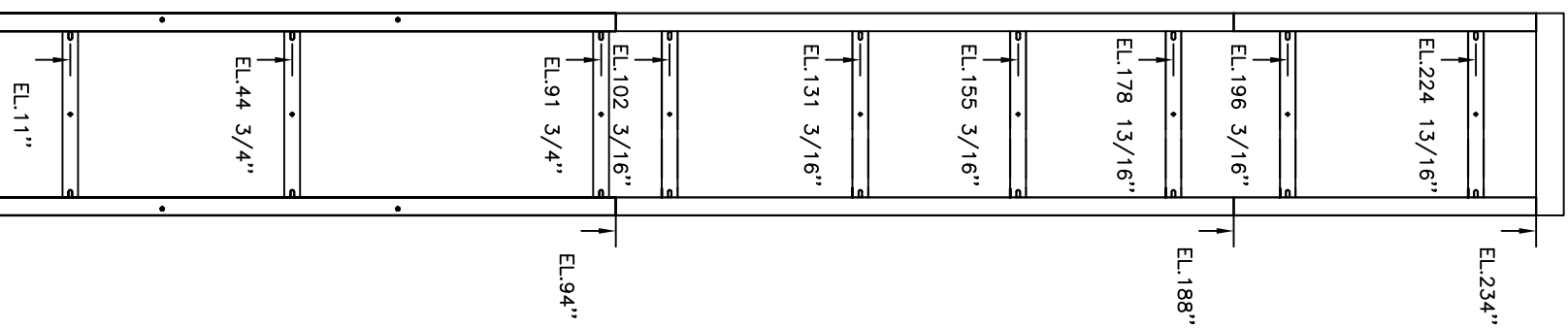
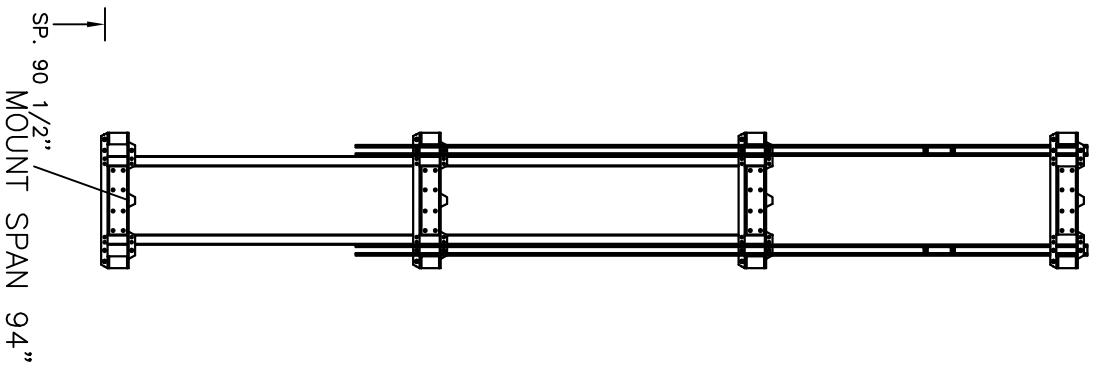
ELEVATION VIEWS

ENCLOSED VERTICAL WHEELCHAIR PLATFORM LIFT

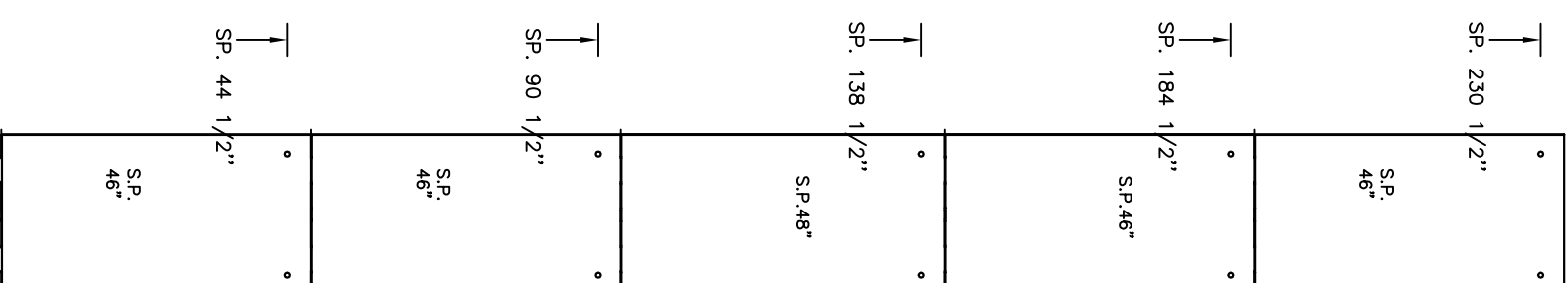
CUSTOMER: FLORIDA LIFTS LLC
 PROJECT: 1943 NW 97TH AVE PROJECT
 ADDRESS: 1943 NW 97TH AVENUE, MIAMI
 FLORIDA, USA, 33172

OFFICE USE ONLY:	
CONFIGURATION VERSION STAMP:	0.0
MODULE VERSION STAMP:	B-S-21
DATE:	02-10-24
REVISION DATE:	05-17-24
COMPLETED BY:	CONRAD LAMBERT

Part No.	V-1504 ENCLOSURE
Variant No.	1 1 30591
Logo	
JOB No.	P000000
SHEET No.	3 OF 4



EL: MOUNTING BRACKET POSITION



SP: SERVICE PANEL

LOADS CALCULATED ON BASED ON ANCHOR POINTS EVERY 48"
 EVERY TOWER SECTION NEEDS TO BE ANCHORED. IF SPACING
 IS INCREASED, LOADS PER BRACKETS WILL INCREASE ACCORDINGLY

ELEVATION VIEWS
 ENCLOSED VERTICAL WHEELCHAIR PLATFORM LIFT

CUSTOMER:
 FLORIDA LIFTS LLC
 PROJECT:
 1943 NW 97TH AVE PROJECT
 ADDRESS:
 1943 NW 97TH AVENUE, MIAMI
 FLORIDA, USA, 33172

OFFICE USE ONLY:
 CONFIGURATION VERSION STAMP: 0.0
 MODULE VERSION STAMP: P-S-21

Part No. V-1504 ENCLOSURE
 Variant No. 1 1 3059 1

DATE: 02-10-24
 REGION DATE: 05-17-24
 COMPLETED BY: [Signature]

Job No. P000000 SHEET No. 4 OF 4