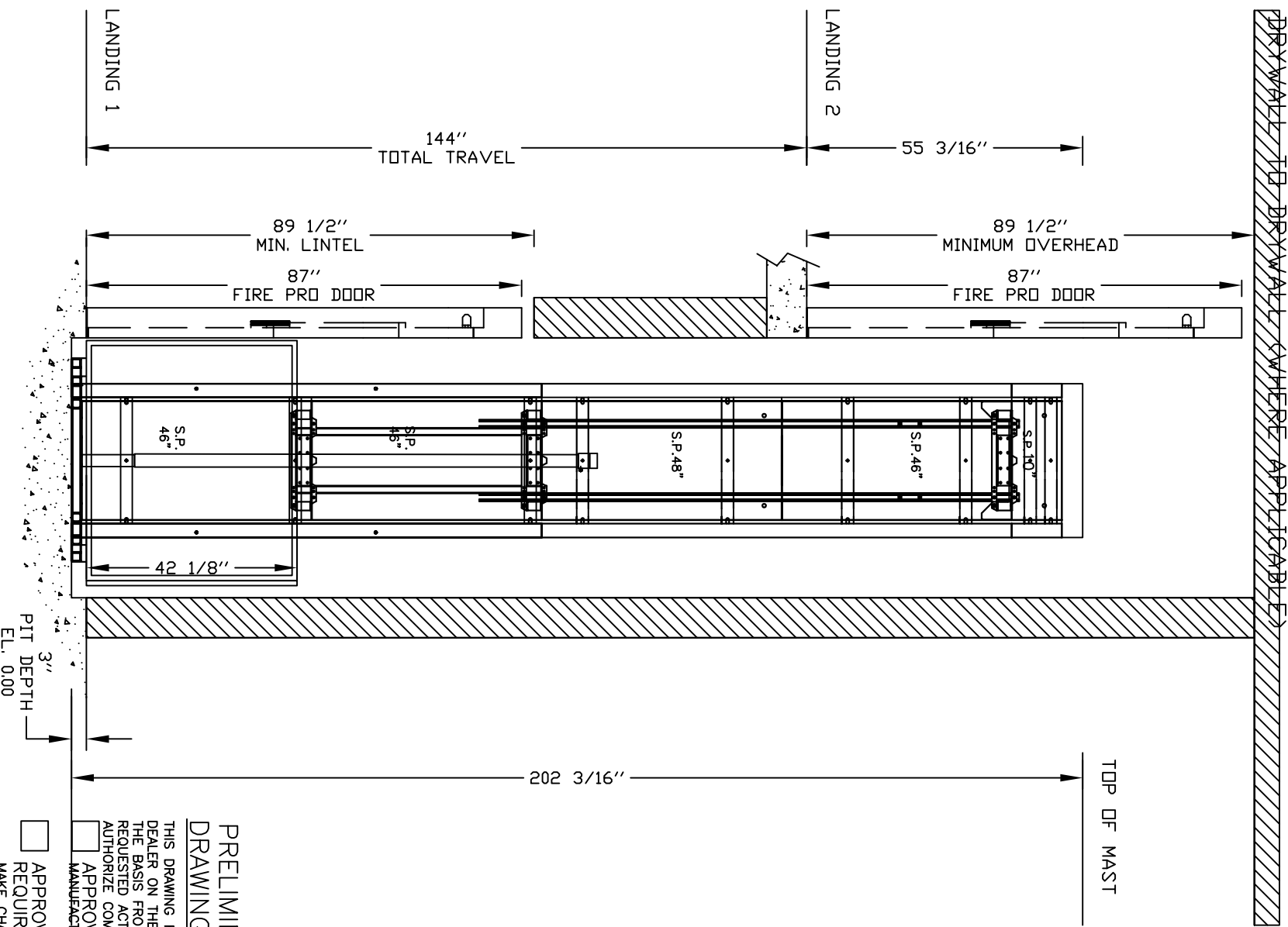


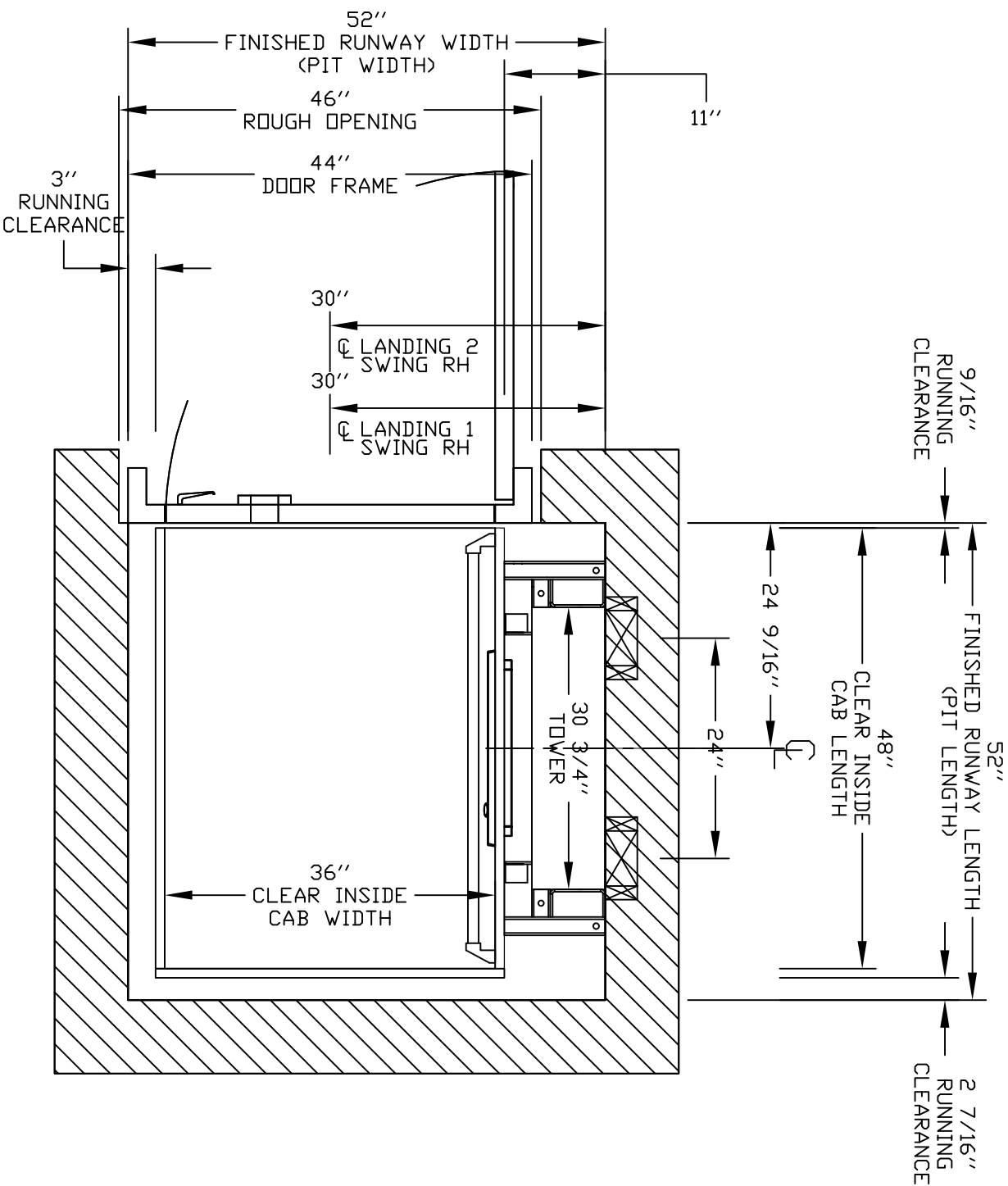
PLEASE NOTE:

OVERALL HOISTWAY LENGTH AND WIDTH DIMENSIONS ARE FROM ~~DRY WALL TO DRY WALL~~ CENTER APPLICATION

TYPICAL PLAN



ELEVATION B-B



PRELIMINARY DRAWING ONLY  
DRAWING APPROVAL:

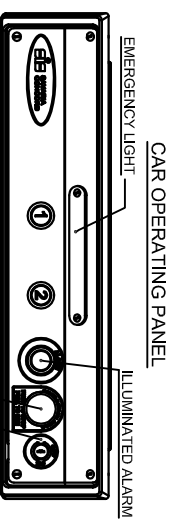
THIS DRAWING REFLECTS OUR INTERPRETATION OF THE INFORMATION PROVIDED BY THE DEALER ON THE ORDER FORM. THIS INFORMATION IS THE DEALER'S RESPONSIBILITY, AND IS THE BASIS FROM WHICH THIS LIFT IS DESIGNED AND MANUFACTURED. PLEASE INDICATE THE REQUESTED ACTION BY CHECKING ONE OF THE FOLLOWING BOXES AND SIGNING BELOW TO AUTHORIZE COMPLETION OF THIS ORDER.

- APPROVED WITH NO EXCEPTIONS  
MANUFACTURE PRODUCT AS PER DRAWING
- APPROVED WITH EXCEPTIONS, NO REAPPROVAL  
REQUIRED
- CHANGE AS NOTED, REAPPROVAL REQUIRED  
MAKE CHANGES AS NOTED, SEND CORRECTED DRAWING FOR  
REAPPROVAL BEFORE MANUFACTURE

CHANGES REQUEST:

1. \_\_\_\_\_
2. \_\_\_\_\_
3. \_\_\_\_\_
4. \_\_\_\_\_

SIGNATURE: \_\_\_\_\_ DATE: \_\_\_\_\_  
CAUTION: ONCE THE DRAWING IS APPROVED, JOB CANCELLATION FEES WILL APPLY



OFFICE USE ONLY:

CONFIGURATION VERSION STAMP: 0.0  
MODULE VERSION STAMP: B-S-810

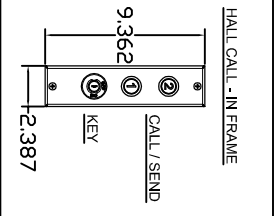
Part No. V-1504

Variant No. 1127461

GENERAL ARRANGEMENT

ENCLOSED VERTICAL WHEELCHAIR PLATFORM LIFT  
PROJECT: LIBRE BRAND STUDIO  
ADDRESS: 129 NW 26 STREET, MIAMI  
FLORIDA, USA, 33127

DATE: 01-20-24  
REVISION DATE: 01-20-24  
COMPLETED BY: [Signature]  
JOB No. P000000  
SHEET No. 1 OF 5



# PROVISIONS BY OTHERS

# SPECIFICATIONS

## GENERAL

**HOISTWAY** – THE HOISTWAY MUST BE DESIGNED AND BUILT IN ACCORDANCE WITH "SAFETY STANDARD FOR PLATFORM LIFTS AND STAIRWAY CHAIRLIFTS" OR "SAFETY CODE FOR ELEVATORS AND ESCALATORS" AND ALL STATE AND LOCAL CODES.

**PLUMB RUNWAY** – DUE TO CLOSE RUNNING CLEARANCES OWNER/AGENT MUST ENSURE THAT HOISTWAY AND PIT (WHERE PROVIDED) ARE LEVEL, PLUMB (-/+ 1/8" (3 mm)) AND SQUARE AND ARE IN ACCORDANCE WITH THE DIMENSIONS ON THESE DRAWINGS.

**MINIMUM OVERHEAD CLEARANCE**– OWNER/AGENT MUST ENSURE MINIMUM OVERHEAD CLEARANCE IS IN COMPLIANCE WITH CODES.

**CONSTRUCTION SITE**– OWNER/AGENT TO PROVIDE ALL MASONRY, CARPENTRY AND DRYWALL WORK AS REQUIRED AND SHALL PATCH AND MAKE GOOD (INCLUDING FINISH PAINTING) ALL AREAS WHERE WALLS/FLOORS MAY REQUIRE TO BE CUT, DRILLED OR ALTERED IN ANY WAY TO PERMIT THE PROPER INSTALLATION OF THE LIFT.

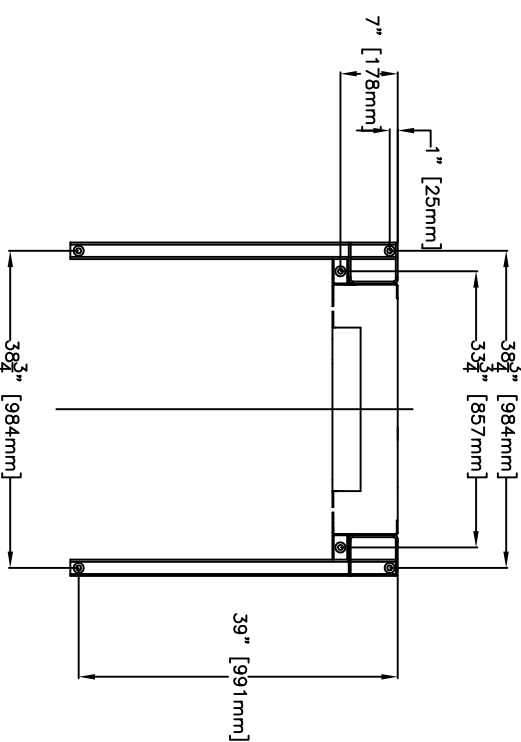
**DIMENSIONS**– CONTRACTOR/CUSTOMER TO VERIFY ALL DIMENSIONS AND REPORT ANY DISCREPANCIES TO OUR OFFICE IMMEDIATELY.

## STRUCTURAL

**FLOOR/SUPPORT WALL LOADS**– CONTRACTOR TO ASSURE THAT BUILDING AND SHAFT WILL SAFELY SUPPORT ALL LOADS IMPOSED BY THE LIFT EQUIPMENT. REFER TO THE LOAD DIAGRAM ON THIS DRAWING.

**MAST TO BE SECURELY FASTENED**– WHERE REQUIRED THE MAST MUST BE SECURELY FASTENED TO THE STRUCTURAL SUPPORT WALL. REFER TO WALL / FLOOR SUPPORT LOAD DIAGRAM AND WALL LAG DIMENSIONS ON THIS DRAWING.

**WHERE DOORS ARE REQUIRED**– SUITABLE LINTELS MUST BE PROVIDED BY OWNER/AGENT. DOOR FRAMES ARE NOT DESIGNED TO SUPPORT OVERHEAD WALL LOADS.



## ELECTRICAL

**GENERAL**– ELECTRICAL EQUIPMENT AND WIRING TO COMPLY WITH SECTION 38 OF CSA C22.1 (CANADA) OR SECTION 620 OF NEC ANSI/NFPA 70 (USA).

**POWER SUPPLY**– 120VAC, 20A, 60HZ, 1PH CIRCUIT THROUGH A FUSE DISCONNECT WITH AUXILIARY CONTACT ON MAIN POWER SUPPLY. PROVIDE TWO 18 AWG CONDUCTORS BETWEEN CONTACT AND CONTROLLER.

**LIGHTING**– LIGHTING OF 100 LX MIN. AT PLATFORM AND LANDINGS. LIGHTING WITH SWITCH AND ELECTRICAL GFCI OUTLET IN HOISTWAY PIT.

**PHONE**– IF A TELEPHONE CIRCUIT IS REQUIRED, JACK OR PHONE ARE PROVIDED ON THE CAR. A DEDICATED ANALOG PHONE LINE (NO VOIP) IS REQUIRED TO BE PROVIDED BY OTHERS TO THE CONTROLLER FOR VOIP, PLEASE CONTACT SAVARIA. SAVARIA LINK REMOTE MONITORING – WIRELESS

ENSURE THAT YOU HAVE A WIRELESS SIGNAL WITH INTERNET CAPABILITY IN THE VICINITY OF UNIT'S CONTROLLER ENTRANCES

**UPPER LANDING GATES**– WHERE REQUIRED, SMOOTH SOLID BARRIERS ARE TO BE SUPPLIED AND INSTALLED ON BOTH SIDES OF ENTRANCE AT UPPER LEVEL AND MUST BE A MINIMUM OF 42" (1067 mm) HIGH. ENTRANCE ASSEMBLY MUST BE IN PLACE PRIOR TO THIS PROVISION. FASCIA PANEL BELOW UPPER LEVEL ENTRANCE – WHERE REQUIRED, FASCIA PANEL MUST BE FASTENED TO A SOLID WALL AND BE PERPENDICULAR TO THE FLOOR AND WALLS. HOISTWAY FASCIA IS NOT SELF-SUPPORTING FOR LONG, CONTINUOUS RUNS VOID OF ENTRANCES. ADEQUATE SUPPORT FOR THE FASCIA MUST BE PROVIDED.

**ENTRANCE ASSEMBLIES**– ENTRANCE ASSEMBLIES MUST BE ADJUSTED TO ALIGN WITH PLATFORM AND INTERLOCK EQUIPMENT. OTHERS TO ALLOW AN ADEQUATE ROUGH OPENING.

**RETURN WALLS**– RETURN WALLS AT ENTRANCES MUST BE BUILT-IN BY OTHERS AFTER ENTRANCE ASSEMBLIES ARE IN PLACE. ENTRANCE ASSEMBLY MUST BE SECURELY FASTENED TO WALLS.

## GENERAL

**CLASSIFICATION:** Enclosed Vertical Wheelchair Platform Lift  
**APPLIED CODE:** ASME A18.1-2017 Section 2 Pub  
**SPECIAL NOTE:** V-1504 Shaftway or Decklift  
**MODEL:** 750 lbs (341 kg)  
**CAPACITY:** 20 fpm (0.102 m/s)  
**NOMINAL SPEED:** 144" (3658 mm)  
**TRAVEL:** 3" (76 mm)  
**PIT DEPTH:** 36" x 48" (914 mm x 1219 mm)  
**PLATFORM SIZE:** 120V,20A,60HZ,SINGLE PHASE  
**POWER SUPPLY:** down direction only  
**BATTERY BACK UP:**

## JACK UNIT

**STROKE:** 84" (2134 mm)  
**PLUNGER O/D:** 2.0" (51 mm)  
**CYL. O/D:** 2.625" (67 mm)  
**CYL. I/D:** 2.25" (57 mm)

## CONTROLLER

**MODEL:** V-1504  
**TYPE:** CPFS  
**QPS #:** LR1390-7R2  
**AMP:** 100 A  
**MFR.:** SAVARIA

## POWER UNIT

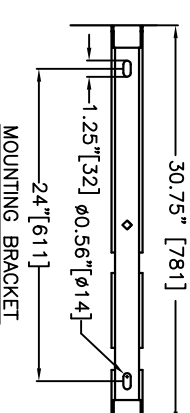
**MOTOR:** 3.0 HP, 24V DC  
**FLOW:** 1.15 Gal/min (4.35L/min)  
**CAB FINISH:** Steel W Paint

## HYDRAULIC DATA

**OIL TYPE:** UNIVIS 32 INDOOR DEXRON ATF OUTDOOR  
**GALLONS REQ'D:** 1.5 Gal (5.68 L)  
**MAXIMUM WORKING PRESSURE:** 2500 psi (17.2 MPa)  
**RELIEF PRESSURE:** WPx125% MAX.  
**MAXIMUM RELIEF PRESSURE:** 2500 psi (17.2 MPa)  
**HYDRAULIC HOSE:** 1/4" (6.4 mm) ID  
**BURST:** 20000 psi (137.9 MPa)  
**FITTINGS:** 1/4" (6.4 mm) NPT MALE

## SUSPENSION CHAIN

**2X #50 ROLLER CHAIN** 7171 lbs (31.9 kN) each  
**BREAKING STRENGTH:** TYPE 'A'  
**SAFETY BRAKE:**



## DOORS / GATES / CALL STATIONS

	LANDING 1	LANDING 2	LANDING 3	LANDING 4
DOOR TYPE	Fire Rated Pro Door	Fire Rated Pro Door		
ENTRANCE SIDE	rh	rh		
DOOR SWING	Not Applicable	Not Applicable		
DOOR INSERT	Pro Lock (24V) Indoor only	Pro Lock (24V) Indoor only		
LOCK TYPE	Pro Door Opener II	Pro Door Opener II		
AUTO DOOR OPENER				
CUSTOM DOOR WIDTH				
CUSTOM DOOR HEIGHT				
IN FRAME CALL STN.	Yes	Yes		
CALL STN. TYPE	Call/Send Buttons	Call/Send Buttons		
CALL STN. KEYPAD	Off Pos. Removable	Off Pos. Removable		
CALL STN. STOP BUTTON	no	no		
CALL STN. MOUNTING	Flush Mounted In Frame	Flush Mounted In Frame		
INSULATED PRODOOR KIT	No	No		

## OPTIONS PROVIDED

**EMERGENCY PENDENT PLUG IN MANUAL LOWERING BOX**

**WINGS:** no  
**TOUCH UP PAINT:** 1 can(s)  
**BUILDING:** Public Building  
**LIGHT CURTAIN:** no  
**PHONE OR PHONE PLUG:** No Phone, Plug Incl  
**FLOOD SWITCH:** no  
**REMOTE MACHINE ROOM:** Not required  
**LOCATION:** INDOOR

**RAMP:** No Ramp Required  
**EXTRA KEYS:** 0  
**WALL FASTENERS:** conc  
**UNDERPAN SENSOR:** no  
**UNIT COLOUR:** Standard Color - Almond Beige  
**FLOOR:** Anti-Skid Paint (Grey)  
**FOLD SEAT:** no

OFFICE USE ONLY:	
CONFIGURATION VERSION STAMP:	0.0
MODULE VERSION STAMP:	B-S-810

DATE:	01-20-24
REVISION DATE:	01-20-24
COMPLETED BY:	OPERATIONAL/LIFT

Part No.	V-1504
Variant No.	1127461

**DATA SHEET**

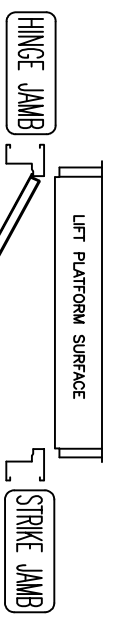
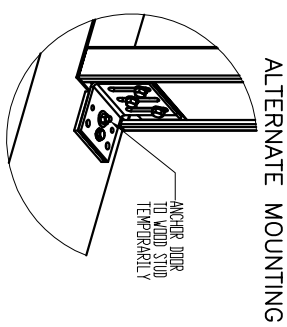
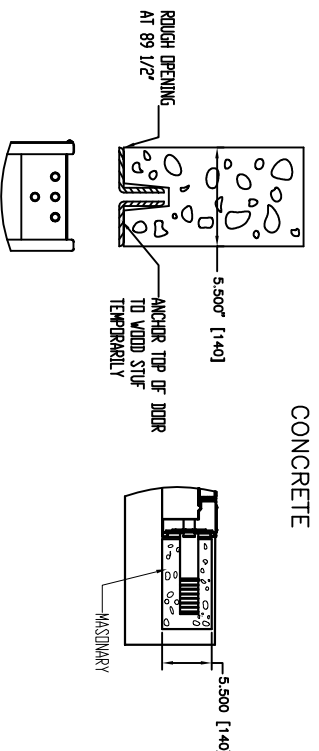
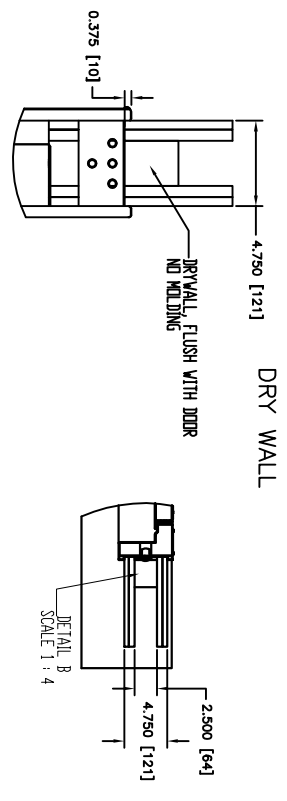
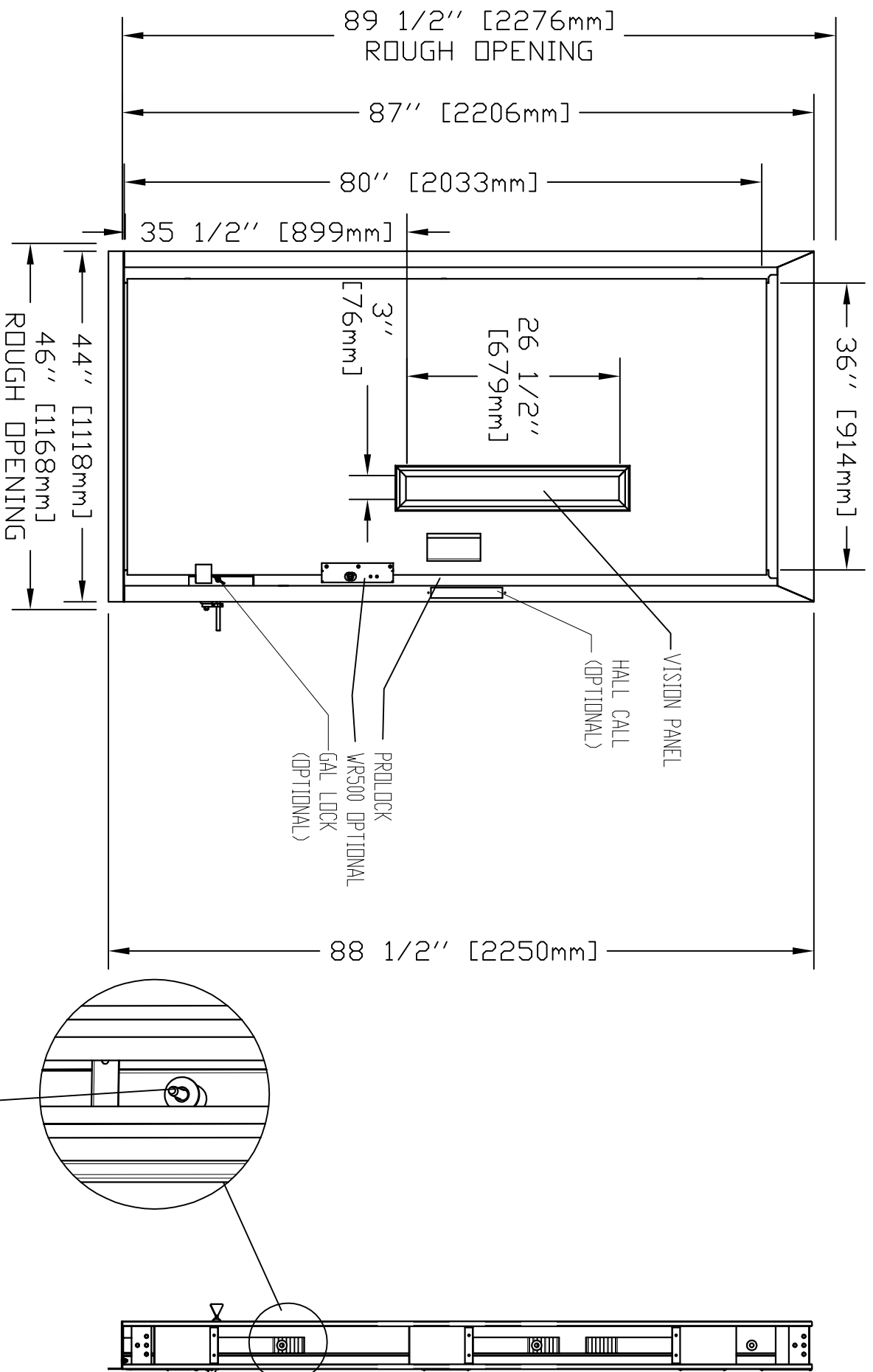
ENCLOSED VERTICAL WHEELCHAIR PLATFORM LIFT

**PROJECT:** LIBRE BRAND STUDIO  
**ADDRESS:** 129 NW 26 STREET, MIAMI FLORIDA, USA, 33127

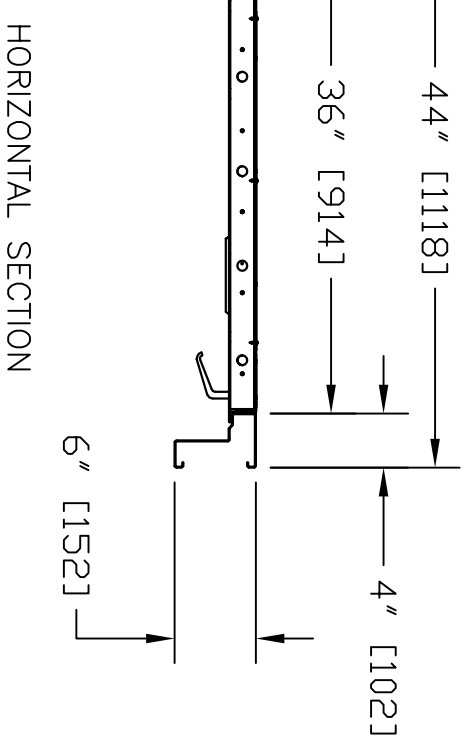
**SAVARIA**

JOB No. P000002 OF 5

LOADS CALCULATED ON BASED ON ANCHOR POINTS EVERY 48" EVERY TOWER SECTION NEEDS TO BE ANCHORED. IF SPACING IS INCREASED, LOADS PER BRACKETS WILL INCREASE ACCORDINGLY.



FRONT VIEW



OFFICE USE ONLY:

CONFIGURATION VERSION STAMP:	0.0
MODULE VERSION STAMP:	B-5-8/10

Part No.	V-1504
Variant No.	1127461

First Level Door

**FIREPRO DOORS**

ENCLOSED VERTICAL WHEELCHAIR PLATFORM LIFT

CUSTOMER: FLORIDA LIFTS LLC

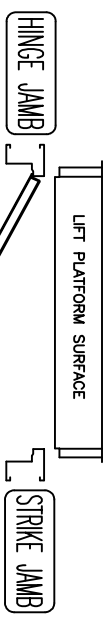
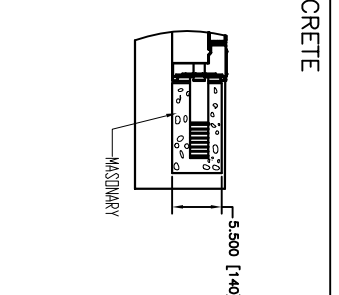
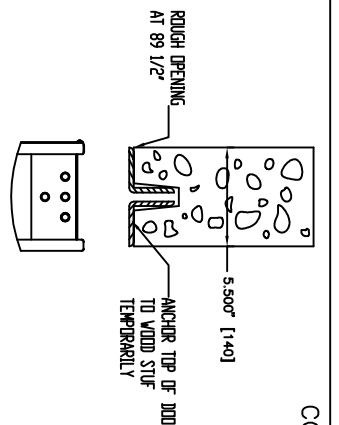
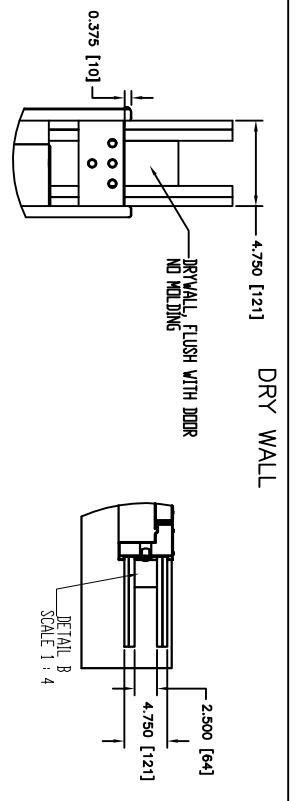
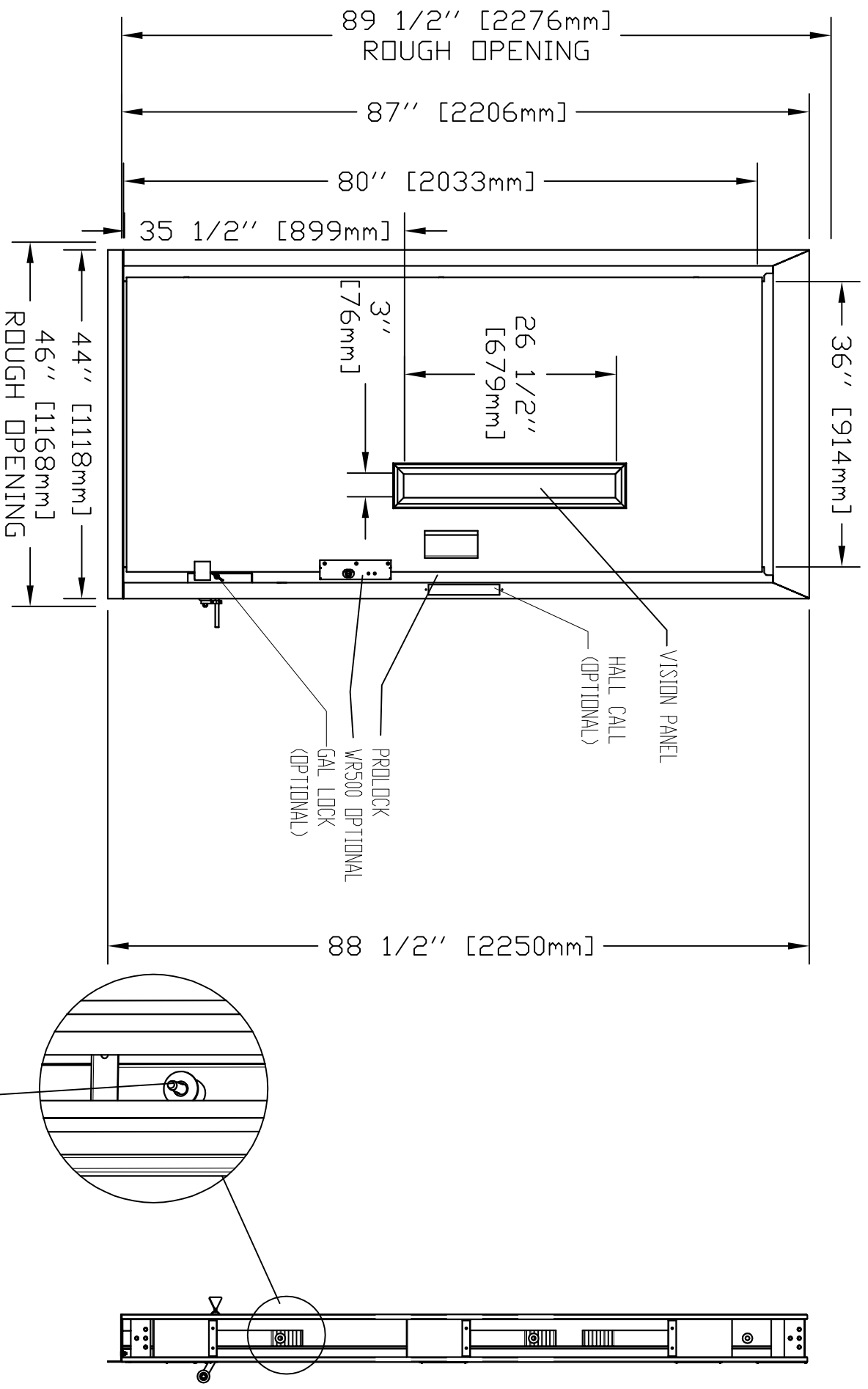
PROJECT: LIBRE BRAND STUDIO

ADDRESS: 129 NW 26 STREET, MIAMI FLORIDA, USA, 33127

- NOTES:
- A.) DRYWALL OR PARING (BY OTHERS)AS REQ'D.
  - B.) SEE DATASHEET OF THE INSTALLATION DRAWING FOR LANDING ENTRANCE SCHEDULE AND RUNNING CLEARANCE.
  - C.) ALL INFORMATION IS SUBJECT TO CHANGE.

GENERAL INFORMATION:

- EACH LANDING ENTRANCE SHALL BE SUPPLIED AS A FINISHED ASSEMBLY WITH DOOR AND FRAME BLANKED, REINFORCED, DRILLED AND TAPPED FOR ALL COMPONENTS DETAILED, READY FOR INSTALLATION.
- FRAMES SHALL BE 16 GA.,FULLY WELDED CONSTRUCTION WITH ALL WELDED JOINTS GROUND TO A SMOOTH, UNIFORM FINISH
- DOORS SHALL BE 18 GA., 2" THICK, SWINGING, FLUSH, STEEL REINFORCED CONSTRUCTION COMPLETE WITH GLASS LITE(S) AS INDICATED.
- DOORS/FRAMES FABRICATED WITH GALVANNEALED PRODUCT A40 COATED WITH PRIMER PAINT WITH SOME FACTORY APPLIED TOUCH-UP. REFER TO OUR INSTRUCTIONS IN MANUAL 000919 TO PAINT OVER THE PRIMER.
- 1.5 HOURS UL/ULC LABELLED ENTRANCES PROVIDED AS INDICATED.
- AUTO DOOR: OPERATOR IS PROVIDED.

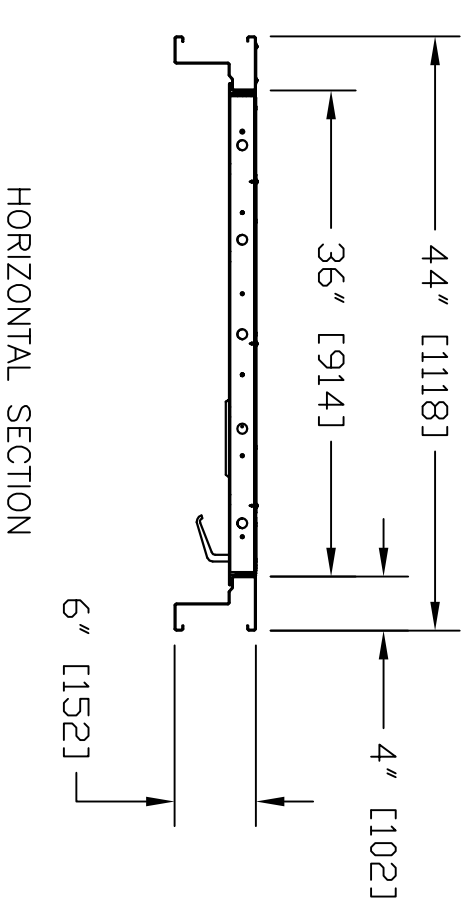


RIGHT HAND SWING

- NOTES:
- A.) DRYWALL OR PARING (BY OTHERS)AS REQ'D.
  - B.) SEE DATASHEET OF THE INSTALLATION DRAWING FOR LANDING ENTRANCE SCHEDULE AND RUNNING CLEARANCE.
  - C.) ALL INFORMATION IS SUBJECT TO CHANGE.

GENERAL INFORMATION:

- EACH LANDING ENTRANCE SHALL BE SUPPLIED AS A FINISHED ASSEMBLY WITH DOOR AND FRAME BLANKED, REINFORCED, DRILLED AND TAPPED FOR ALL COMPONENTS DETAILED, READY FOR INSTALLATION.
- FRAMES SHALL BE 16 GA.,FULLY WELDED CONSTRUCTION WITH ALL WELDED JOINTS GROUND TO A SMOOTH, UNIFORM FINISH
- DOORS SHALL BE 18 GA., 2" THICK, SWINGING, FLUSH, STEEL REINFORCED CONSTRUCTION COMPLETE WITH GLASS LITE(S) AS INDICATED.
- DOORS/FRAMES FABRICATED WITH GALVANNEALED PRODUCT A40 COATED WITH PRIMER PAINT WITH SOME FACTORY APPLIED TOUCH-UP. REFER TO OUR INSTRUCTIONS IN MANUAL 000919 TO PAINT OVER THE PRIMER.
- 1.5 HOURS UL/ULC LABELLED ENTRANCES PROVIDED AS INDICATED.
- AUTO DOOR: OPERATOR IS PROVIDED.



Second Level Door

**FIREPRO DOORS**

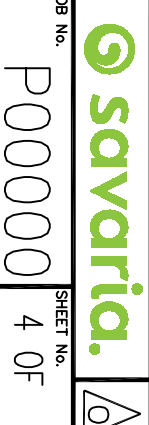
ENCLOSED VERTICAL WHEELCHAIR PLATFORM LIFT

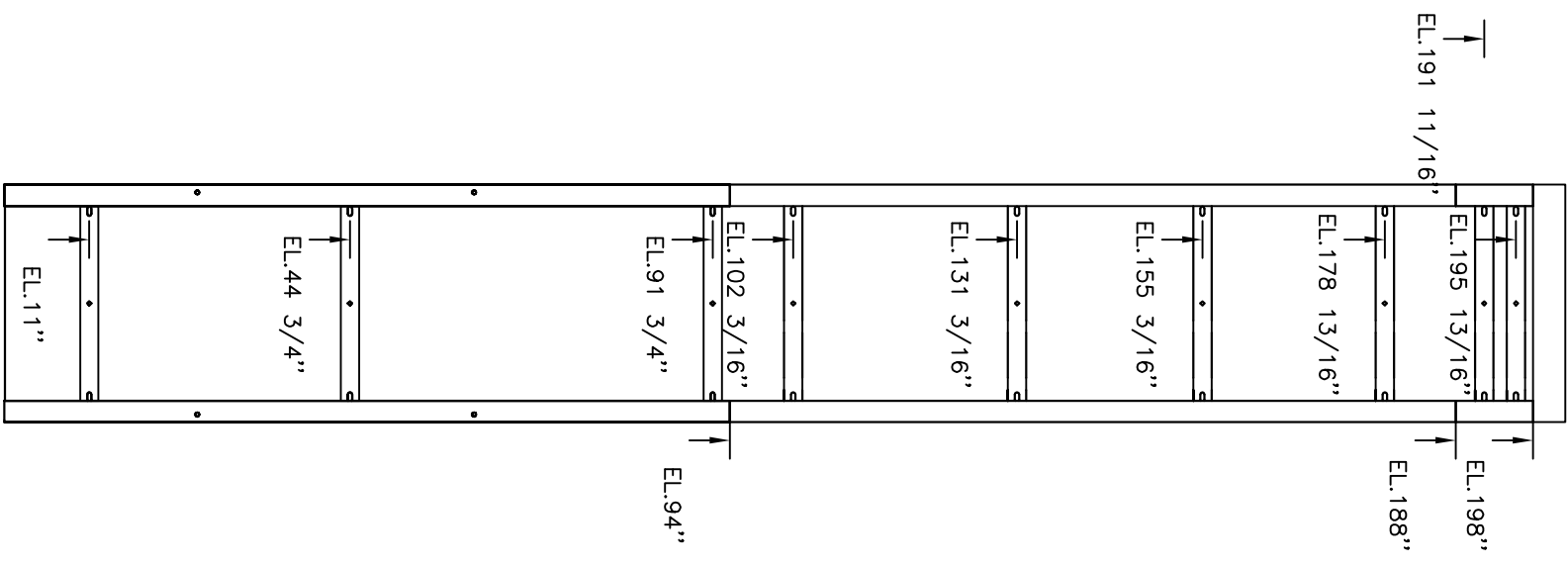
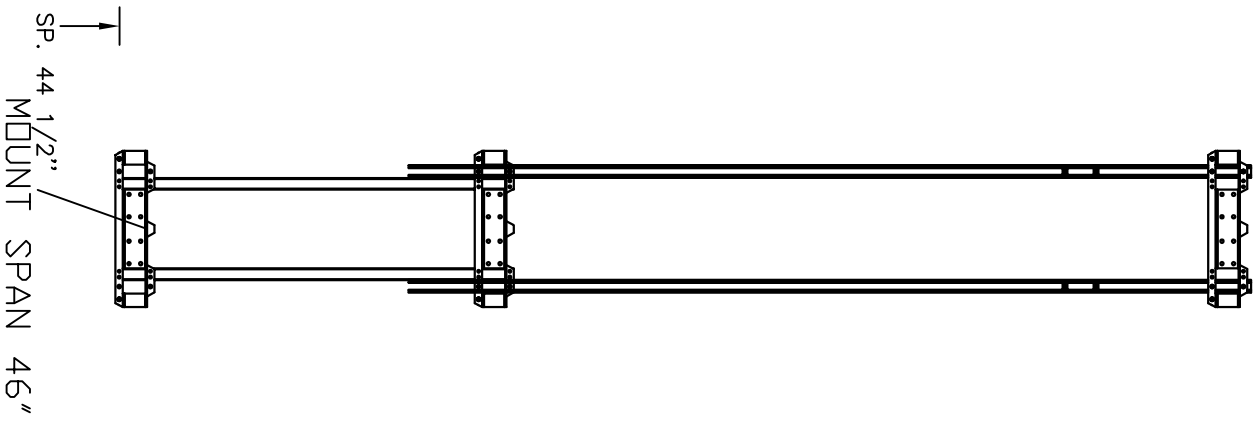
CUSTOMER: FLORIDA LIFTS LLC

PROJECT: LIBRE BRAND STUDIO

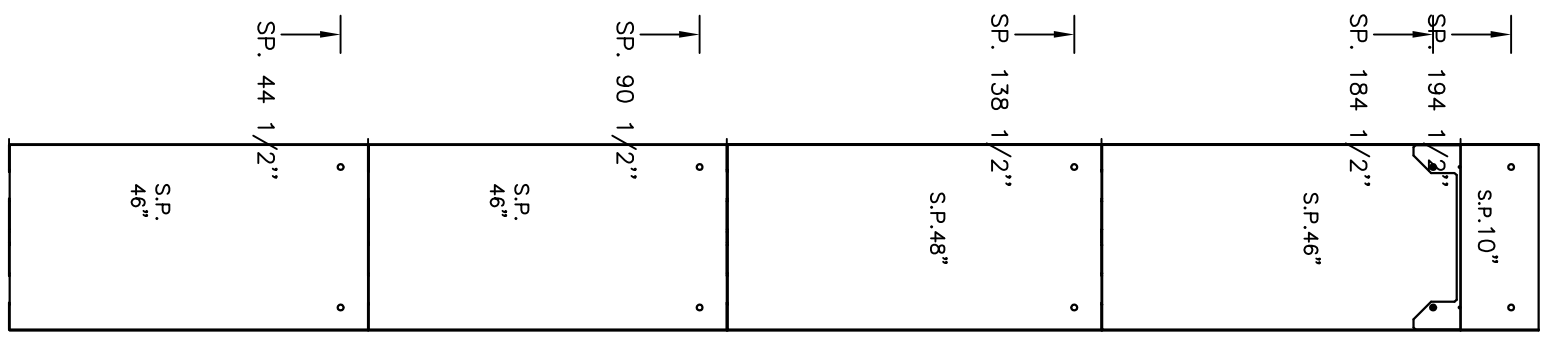
ADDRESS: 129 NW 26 STREET, MIAMI FLORIDA, USA, 33127

OFFICE USE ONLY:		Part No.	V-1504
CONFIGURATION VERSION STAMP:	0.0	Variant No.	1127461
MODULE VERSION STAMP:	B-8/11	DATE:	01-20-24
		REVISION DATE:	01-20-24
		COMPLETED BY:	CONTRIBUTOR
		JOB No.	P00000
		SHEET No.	4 OF 5





EL: MOUNTING BRACKET POSITION



SP: SERVICE PANEL

LOADS CALCULATED ON BASED ON ANCHOR POINTS EVERY 48"  
 EVERY TOWER SECTION NEEDS TO BE ANCHORED. IF SPACING  
 IS INCREASED, LOADS PER BRACKETS WILL INCREASE ACCORDINGLY

**ELEVATION VIEWS**  
 ENCLOSED VERTICAL WHEELCHAIR PLATFORM LIFT

CUSTOMER:  
 FLORIDA LIFTS LLC  
 PROJECT:  
 LIBRE BRAND STUDIO  
 ADDRESS:  
 129 NW 26 STREET, MIAMI  
 FLORIDA, USA, 33127

OFFICE USE ONLY:	
CONFIGURATION VERSION STAMP:	0.0
MODULE VERSION STAMP:	P-S-870
DATE:	01-20-24
REVISION DATE:	01-20-24
COMPLETED BY:	CONSTRUCTION

Part No.	V-1504
Variant No.	1127461




JOB No. P000000 SHEET No. 5 OF 5