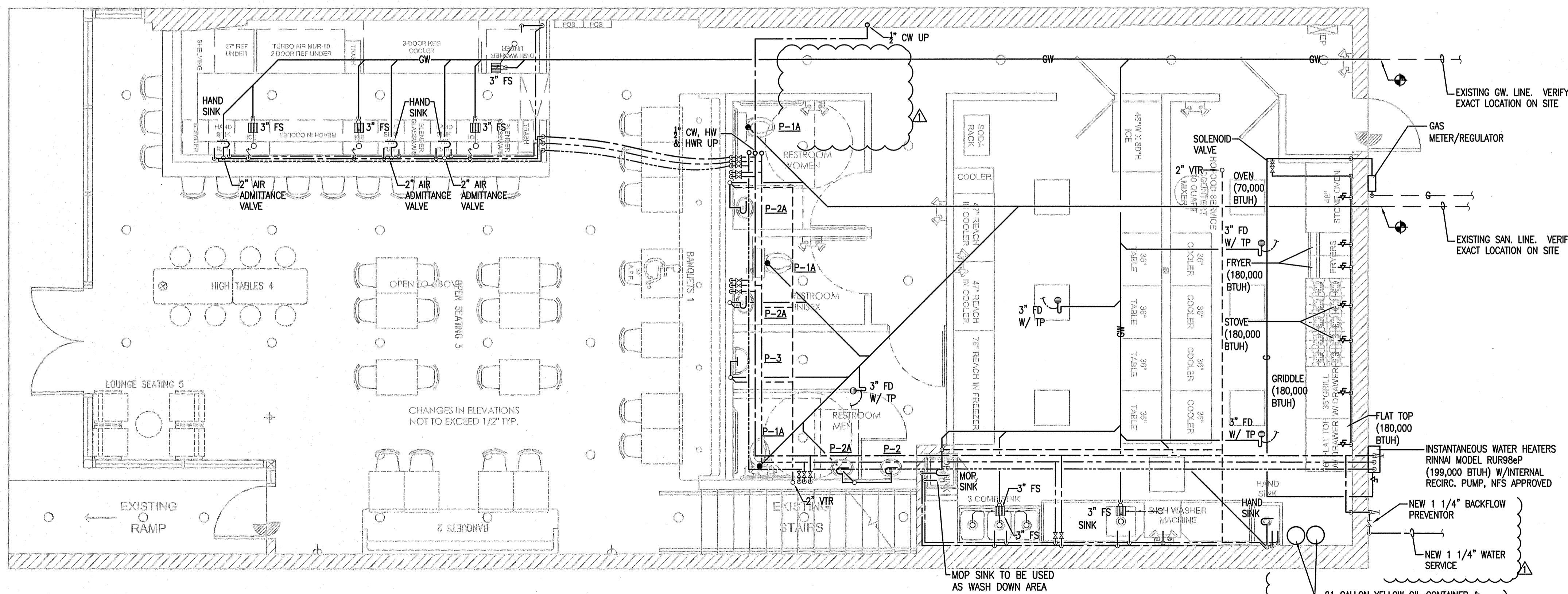
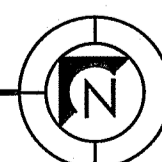


**SECOND FLOOR PLUMBING PLAN**

Scale: 1/4"=1'-0"



**FIRST FLOOR PLUMBING PLAN**



**NOTE:**  
ALL LABELS AND MARKINGS OF GREASE INTERCEPTOR SHALL REMAIN VISIBLE DURING AND AFTER INSTALLATION.

GREASE INTERCEPTORS & SAMPLING PORT SHALL BE ACCESSIBLE AT ALL TIMES WITHOUT HAVING TO REMOVE ANY MERCHANDISE AND WITHOUT STANDING WATER ON GROUND SURFACE; WITH A 36 INCHES HORIZONTAL CLARENCE FROM ANY WALL, FIXED EQUIPMENT OR STORED MATERIALS AND 48 INCHES VERTICAL CLEARANCE FROM ANY FIXED EQUIPMENT OR STORED MATERIALS.

- REFERENCED NOTES:**
- 1 NEW SOLID INTERCEPTOR STRIEM MODEL # CB-125-FSL, 4" INLET/OUTLET, LIQUID CAPACITY 125 GAL., SOLIDS CAPACITY 70 GAL. (SEE DETAIL) (PROVIDE TRAFFIC RATED LID)
  - 2 NEW GREASE INTERCEPTOR SYSTEM SCHIER MODEL GB-250-2-SERIES 100 GPM, 4" INLET/OUTLET (SEE DETAIL) (PROVIDE TRAFFIC RATED LIDS)
  - 3 NEW SAMPLING PORT (SEE DETAIL)

**NOTE:**  
INSTALLATION OF FOG SYSTEM SHALL BE BELOW GROUND. ALL LABELS AND MARKINGS OF GREASE INTERCEPTOR SHALL REMAIN VISIBLE DURING AND AFTER INSTALLATION.

STORAGE FOR YELLOW AND BROWN GREASE SHALL BE PROVIDED BY FUTURE TENANTS.

21 GALLON YELLOW OIL CONTAINER & BROWN YELLOW CONTAINER. CONTAINERS SHALL BE IDENTIFIED AS "YELLOW OIL CONTAINER" & "BROWN OIL CONTAINER". LABELS SHALL ALSO INCLUDE CAPACITY IN GALLONS. CONTAINERS SHALL HAVE LID.

NO.	DATE	DESCRIPTION
1	6/12/20	BLDG. DPT. COMMENTS
2	7/6/20	BLDG. DPT. COMMENTS

DATE:	PM: AS
DRAWN BY:	AS
DESIGNED BY:	AS
CHECKED BY:	AS/RC

REVISION PLAN  
REVISION & MISC. REPAIRS  
OWNER INFORMATION 382 / 384 MIRACLE MILE CORAL GABLES FL 33134