

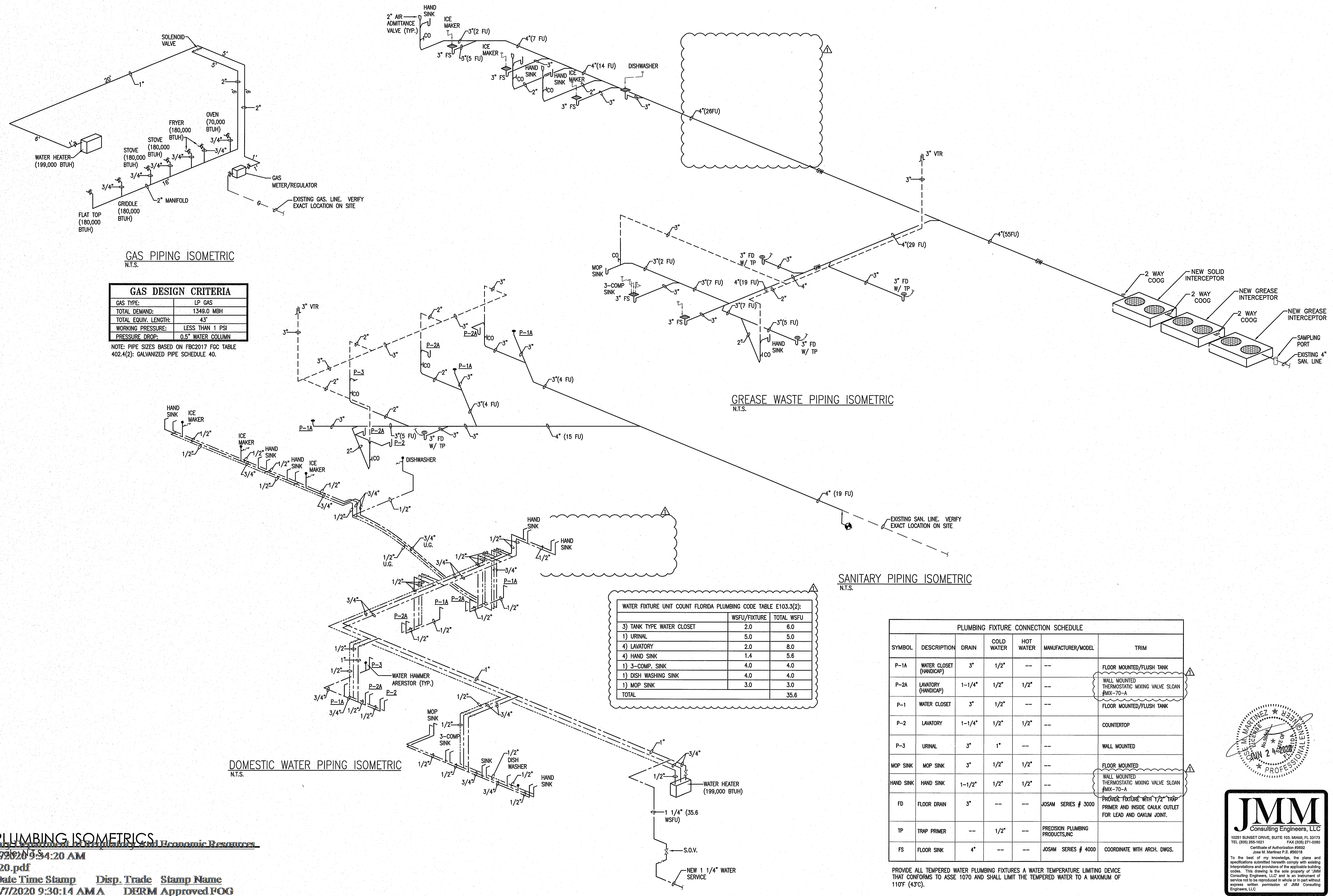
NO.	DESCRIPTION	BLDG. DPT. COMMENTS
1	6/12/20	

DATE	BY	DESCRIPTION
6/12/20	AS	DESIGNED BY
	AS/RC	CHECKED BY
	AS	SCALE

REVISION PLAN
REVISION & MISC. REPAIRS

OWNER INFORMATION 382 / 384 MIRACLE MILE CORAL GABLES FL 33134

FLOOR PLANS



GAS PIPING ISOMETRIC
N.T.S.

GAS DESIGN CRITERIA	
GAS TYPE:	LP GAS
TOTAL DEMAND:	1349.0 MBH
TOTAL EQUIV. LENGTH:	43'
WORKING PRESSURE:	LESS THAN 1 PSI
PRESSURE DROP:	0.5" WATER COLUMN

NOTE: PIPE SIZES BASED ON FBC2017 FGC TABLE 402.4(2); GALVANIZED PIPE SCHEDULE 40.

GREASE WASTE PIPING ISOMETRIC
N.T.S.

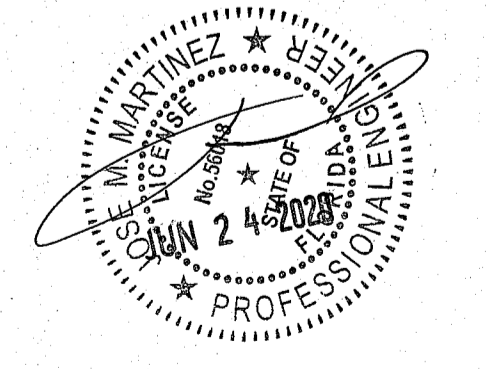
SANITARY PIPING ISOMETRIC
N.T.S.

DOMESTIC WATER PIPING ISOMETRIC
N.T.S.

WATER FIXTURE UNIT COUNT FLORIDA PLUMBING CODE TABLE E103.3(2):		
3) TANK TYPE WATER CLOSET	WSFU/FIXTURE	TOTAL WSFU
3) TANK TYPE WATER CLOSET	2.0	6.0
1) URINAL	5.0	5.0
4) LAVATORY	2.0	8.0
4) HAND SINK	1.4	5.6
1) 3-COMP. SINK	4.0	4.0
1) DISH WASHING SINK	4.0	4.0
1) MOP SINK	3.0	3.0
TOTAL		35.6

PLUMBING FIXTURE CONNECTION SCHEDULE						
SYMBOL	DESCRIPTION	DRAIN	COLD WATER	HOT WATER	MANUFACTURER/MODEL	TRIM
P-1A	WATER CLOSET (HANDICAP)	3"	1/2"	--	--	FLOOR MOUNTED/FLUSH TANK
P-2A	LAVATORY (HANDICAP)	1-1/4"	1/2"	1/2"	--	WALL MOUNTED THERMOSTATIC MIXING VALVE SLOAN #MIX-70-A
P-1	WATER CLOSET	3"	1/2"	--	--	FLOOR MOUNTED/FLUSH TANK
P-2	LAVATORY	1-1/4"	1/2"	1/2"	--	COUNTERTOP
P-3	URINAL	3"	1"	--	--	WALL MOUNTED
MOP SINK	MOP SINK	3"	1/2"	1/2"	--	FLOOR MOUNTED
HAND SINK	HAND SINK	1-1/2"	1/2"	1/2"	--	WALL MOUNTED THERMOSTATIC MIXING VALVE SLOAN #MIX-70-A
FD	FLOOR DRAIN	3"	--	--	JOSAM SERIES # 3000	PROVIDE FIXTURE WITH 1/2" TRAP PRIMER AND INSIDE CAULK OUTLET FOR LEAD AND OAKUM JOINT.
TP	TRAP PRIMER	--	1/2"	--	PRECISION PLUMBING PRODUCTS, INC.	
FS	FLOOR SINK	4"	--	--	JOSAM SERIES # 4000	COORDINATE WITH ARCH. DWGS.

PROVIDE ALL TEMPERED WATER PLUMBING FIXTURES A WATER TEMPERATURE LIMITING DEVICE THAT CONFORMS TO ASSE 1070 AND SHALL LIMIT THE TEMPERED WATER TO A MAXIMUM OF 110°F (43°C).



JMM
Consulting Engineers, LLC

10291 SUNSET DRIVE, SUITE 100, MIAMI, FL 33173
TEL: (305) 255-1621 FAX: (305) 271-0200
Certificate of Authorization #0992
Jose M. Martinez P.E. #55018

To the best of my knowledge, the plans and specifications submitted herewith comply with existing interpretations and provisions of the applicable building codes. This drawing is the sole property of JMM Consulting Engineers, LLC and is an instrument of service not to be reproduced in whole or in part without express written permission of JMM Consulting Engineers, LLC.