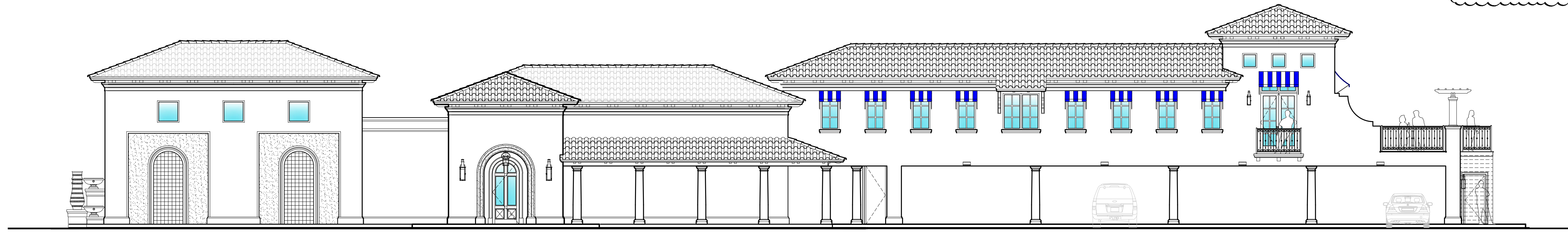


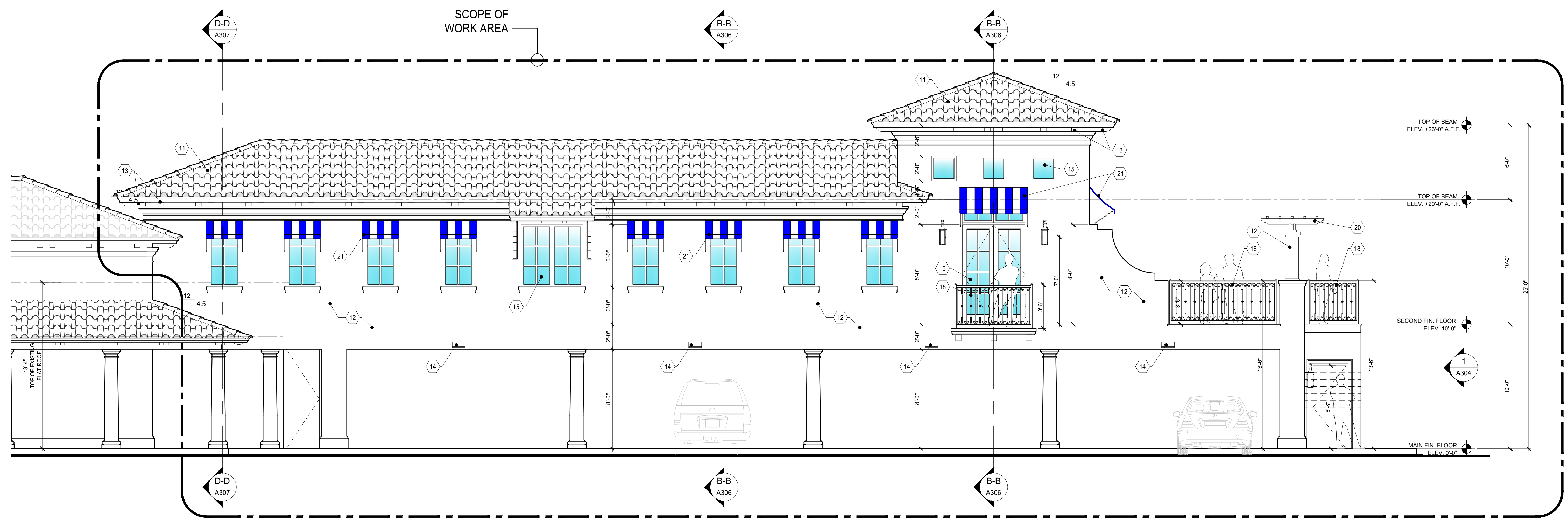
REVISIONS	BY	DATE
PERMIT SETS ISSUED	DWD	03.03.20
BLDG. DEPT. REVISIONS	DWD	06.10.20

MATERIALS & PROFILES	
01-10	SEE A301 FOR DETAIL PROFILES
11	BORAL 'BARCELONA 900' CONCRETE TILE w/ 20% BOOSTED CAPS TO MATCH EXISTING
12	EXTERIOR WALL w/ "PALM BEACH" STUCCO FINISH TO MATCH EXISTING
13	PAINTED FAUX WOOD OUTRIGGERS, SEE DETAIL 05A301
14	EXISTING WALL MOUNTED LIGHT SCONCE
15	IMPACT RATED DOORS AND WINDOWS
16	RELOCATED COPPERCRAFT WINDOWS CONDUCTOR HEAD (15" x 9 1/2" x 13" HIGH) WITH 4" ROUND DOWNSPOUT
17	OVERFLOW SCUPPER
18	42" HIGH WROUGHT IRON RAILING w/ PICKETS SPACED TO REJECT A 4" DIA. SPHERE
19	34"-38" MAX. WROUGHT IRON HANDRAIL
20	PERGOLA MADE OUT OF IPE WOOD, SEE DETAIL 09A301
21	METAL FRAME & FABRIC AWNING

PERMIT SET 03-03-20



2 OVERALL NORTH ELEVATION
1/8"=1'-0"



1 PARTIAL NORTH ELEVATION
1/4"=1'-0"

REDGRAVE & ROSENTHAL
 OFFICE BUILDING
 RENOVATION & ADDITION
 14881 HAGEN RANCH ROAD
 DELRAY BEACH, FL

RANDALL STOFFT
 ARCHITECTS
 distinctive, inspirational, architecture.

Job No. 1904026
 FL-001105 FIRM-AA003379
ALL DESIGN, DESIGN ARRANGEMENTS, & PLANS INDICATED OR REPRESENTED BY THIS DRAWING ARE OWNED BY A MEMBER OF THE RANDALL STOFFT ARCHITECTS GROUP. ANY REUSE, REPRODUCTION, OR DISTRIBUTION OF THIS DRAWING WITHOUT THE WRITTEN PERMISSION OF RANDALL STOFFT ARCHITECTS, P.A. IS STRICTLY PROHIBITED. CONTRACTORS SHALL VERIFY & BE RESPONSIBLE FOR ALL DIMENSIONS & CONDITIONS ON THE JOB. A THIS OFFICE MUST BE NOTIFIED OF ANY CHANGES TO THE DESIGN OR CONDITIONS SHOWN BY THESE DRAWINGS. BACK DETAILS OF ASSOCIATE SCALE MUST BE SUBMITTED TO THIS OFFICE FOR APPROVAL BEFORE PROCEEDING WITH FABRICATION OR INSTALLATION. © 2020. ALL RIGHTS RESERVED. RANDALL STOFFT ARCHITECTS P.A.

A303

F:\COVID19\1904026-REDGRAVE & ROSENTHAL-ADDITION\Sheet Files\RegDraws_A303.dwg, 7/17/2020 6:11:51 PM
 42 N SWINTON AVENUE, DELRAY BEACH, FL 33444 (561) 262-7677 • WWW.STOFFT.COM