



DEPARTMENT OF REGULATORY AND ECONOMIC RESOURCES (RER)
BOARD AND CODE ADMINISTRATION DIVISION

NOTICE OF ACCEPTANCE (NOA)

MIAMI-DADE COUNTY
PRODUCT CONTROL SECTION

11805 SW 26 Street, Room 208
T (786) 315-2590 F (786) 315-2599

www.miamidade.gov/economy

QuikServ Corp.
11441 Brittmoore Park Drive
Houston, TX 77240

SCOPE:

This NOA is being issued under the applicable rules and regulations governing the use of construction materials. The documentation submitted has been reviewed and accepted by Miami-Dade County RER - Product Control Section to be used in Miami Dade County and other areas where allowed by the Authority Having Jurisdiction (AHJ).

This NOA shall not be valid after the expiration date stated below. The Miami-Dade County Product Control Section (In Miami-Dade County) and/ or the AHJ (in areas other than Miami-Dade County) reserve the right to have this product or material tested for quality assurance purposes. If this product or material fails to perform in the accepted manner, the manufacturer will incur the expense of such testing and the AHJ may immediately revoke, modify, or suspend the use of such product or material within their jurisdiction. RER reserves the right to revoke this acceptance, if it is determined by Miami-Dade County Product Control Section that this product or material fails to meet the requirements of the applicable building code.

This product is approved as described herein and has been designed to comply with the Florida Building Code, including the High Velocity Hurricane Zone. -

DESCRIPTION: Series "Commercial Horizontal Sliding" Aluminum Pass-Through Window – L.M.I.

APPROVAL DOCUMENT: Drawing No. 21-029 (former 17-080), titled "Commercial Pass-Thru Horizontal Sliding Windows – Large Missile Impact Resistant", sheets 1 through 14 of 14, dated 01/21/2021, prepared by Tilteco, Inc., signed and sealed by Walter A. Tillit, Jr., P.E., bearing the Miami-Dade County Product Control Revision stamp with the Notice of Acceptance number and expiration date by the Miami-Dade County Product Control Section.

MISSILE IMPACT RATING: Large and Small Missile Impact Resistant

LABELING: Each unit shall bear a permanent label with the manufacturer's name or logo, city, state, series, and following statement: "Miami-Dade County Product Control Approved", unless otherwise noted herein.

RENEWAL of this NOA shall be considered after a renewal application has been filed and there has been no change in the applicable building code negatively affecting the performance of this product.

TERMINATION of this NOA will occur after the expiration date or if there has been a revision or change in the materials, use, and/ or manufacture of the product or process. Misuse of this NOA as an endorsement of any product, for sales, advertising or any other purposes shall automatically terminate this NOA. Failure to comply with any section of this NOA shall be cause for termination and removal of NOA.

ADVERTISEMENT: The NOA number preceded by the words Miami-Dade County, Florida, and followed by the expiration date may be displayed in advertising literature. If any portion of the NOA is displayed, then it shall be done in its entirety.

INSPECTION: A copy of this entire NOA shall be provided to the user by the manufacturer or its distributors and shall be available for inspection at the job site at the request of the Building Official.

This NOA revises NOA No. 18-0814.02 and consists of this page 1 and evidence pages E-1, E-2, E-3 and E-4, as well as approval document mentioned above.

The submitted documentation was reviewed by **Ishaq I. Chanda, P.E.**



NOA No. 21-0205.09
Expiration Date: March 25, 2024
Approval Date: May 06, 2021

4/27/21

NOTICE OF ACCEPTANCE: EVIDENCE SUBMITTED

1. EVIDENCE SUBMITTED UNDER PREVIOUS NOA's

A. DRAWINGS

1. Manufacturer's die drawings and sections.
(Submitted under NOA No. 08-1210.04)
2. Drawing No. **17-080**, titled "Commercial Pass-Thru Horizontal Sliding Windows – Large Missile Impact Resistant", sheets 1 thru 14 of 14, dated 07/17/17, with revision # 2 dated 11/02/17, prepared by Tilteco, Inc., signed and sealed by Walter A. Tillit, Jr., P.E.

B. TESTS

1. Test reports on:
 - 1) Air Infiltration Test, per FBC, TAS 202-94
 - 2) Uniform Static Air Pressure Test, Loading per FBC, TAS 202-94
 - 3) Water Resistance Test, per FBC, TAS 202-94
 - 4) Large Missile Impact Test per FBC, TAS 201-94
 - 5) Cyclic Wind Pressure Loading per FBC, TAS 203-94
 - 6) Forced Entry Test, per FBC 2411.3.2.1, and TAS 202-94along with marked-up drawings and installation diagram of an aluminum horizontal sliding window, prepared by Architectural Testing, Inc., Test Report No. **ATI-85482.01-801-18**, dated 12/01/08, signed and sealed by Joseph A. Reed, P.E.
(Submitted under NOA No. 08-1210.04)

C. CALCULATIONS

1. Anchor verification calculations and structural analysis, complying with **FBC 5th Edition (2014)**, prepared by Tilteco, Inc., dated 03/11/15, signed and sealed by Walter A. Tillit, P.E.
(Submitted under NOA No. 17-0731.03)
2. Glazing complies with **ASTM E1300-04/09**

D. QUALITY ASSURANCE

1. Miami-Dade Department of Regulatory and Economic Resources (RER).

E. MATERIAL CERTIFICATIONS

1. Notice of Acceptance No. **14-0423.15** issued to **Eastman Chemical Company (MA)** for their "**Saflex CP – Saflex and Saflex HP Composite Glass Interlayers with PET Core**" dated 06/19/14, expiring on 12/11/18.
2. Material Safety Data Sheet of **MSDS-17 High Density Polyethylene**, dated 09/11/08 and issued by Quadrant Engineering Plastic Products USA, Inc., the latest revision dated 09/01/10 by M. Lykins.



Ishaq I. Chanda, P.E.
Product Control Unit Supervisor
NOA No. 21-0205.09
Expiration Date: March 25, 2024
Approval Date: May 06, 2021

QuikServ Corp.


NOTICE OF ACCEPTANCE: EVIDENCE SUBMITTED

F. STATEMENTS

1. Statement letter of conformance, complying with **FBC 5th Edition (2014)** and **FBC 6th Edition (2017)**, dated July 17, 2017, issued by Tilteco, Inc., signed and sealed by Walter A. Tillit, Jr., P.E.
(Submitted under NOA No. 17-0731.03)
2. Department of State Certification of QuikServ Corporation as a foreign profit corporation, active and organized under the laws of the State of Florida, dated 01/13/15 and e-filed by the Secretary of State.
(Submitted under NOA No. 15-0316.03)
3. Department of State Certification of QuikServ Corp. as a For-Profit Corporation, active and organized under the laws of the State of Texas, dated 01/07/14 and e-filed by the Secretary of State.
(Submitted under NOA No. 13-1203.09)
4. Statement letter of no financial interest, dated 08/05/13, signed and sealed by Walter A. Tillit, P.E.
(Submitted under NOA No. 08-1210.04)
5. Department of State Certification of QuikServ Corp. as a For-Profit Corporation, active and organized under the laws of the State of Texas, dated 07/15/08, filed and signed by Phil Wilson, Secretary of State.
(Submitted under NOA No. 08-1210.04)
6. Laboratory addendum letter for Test Report No. **ATI-85482.01-801-18**, issued by Architectural Testing, Inc., dated 02/16/09, signed and sealed by Joseph A. Reed, P.E.
(Submitted under NOA No. 08-1210.04)
7. Laboratory compliance letter for Test Report No. **ATI-85482.01-801-18**, issued by Architectural Testing, Inc., dated 12/05/08, signed and sealed by Joseph A. Reed, P.E.
(Submitted under NOA No. 08-1210.04)

G. OTHERS

1. Notice of Acceptance No. **13-1203.09**, issued to QuikServ Corp. for their Series "Impact Pass-Thru Horizontal Sliding" Aluminum Pass-Through Window – L.M.I., approved on 02/13/14 and expiring on 03/25/19.

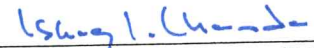


Ishaq I. Chanda, P.E.
Product Control Unit Supervisor
NOA No. 21-0205.09
Expiration Date: March 25, 2024
Approval Date: May 06, 2021

QuikServ Corp.

NOTICE OF ACCEPTANCE: EVIDENCE SUBMITTED

2. **EVIDENCE SUBMITTED under previous submittal**
 - A. **DRAWINGS**
 1. None.
 - B. **TESTS**
 1. None.
 - C. **CALCULATIONS**
 1. None.
 - D. **QUALITY ASSURANCE**
 1. Miami-Dade Department of Regulatory and Economic Resources (RER).
 - E. **MATERIAL CERTIFICATIONS**
 1. Notice of Acceptance No. 17-0712.03 issued to Eastman Chemical Company (MA) for their "Saflex CP - Saflex and Saflex HP Composite Glass Interlayers with PET Core" dated 09/07/17, expiring on 12/11/18.
 - F. **STATEMENTS**
 1. None.
 - G. **OTHERS**
 1. Notice of Acceptance No. 17-0731.03, issued to QuikServ Corp. for their Series "Commercial" Aluminum Pass-Through Horizontal Sliding Window – L.M.I.", approved on 09/07/17 and expiring on 03/25/19.



Ishaq I. Chanda, P.E.
Product Control Unit Supervisor
NOA No. 21-0205.09
Expiration Date: March 25, 2024
Approval Date: May 06, 2021

QuikServ Corp.

NOTICE OF ACCEPTANCE: EVIDENCE SUBMITTED

3. NEW EVIDENCE SUBMITTED

A. DRAWINGS

1. Drawing No. **21-029** (former **17-080**), titled "Commercial Pass-Thru Horizontal Sliding Windows – Large Missile Impact Resistant", sheets 1 through 14 of 14, dated 01/21/2021, prepared by Tilteco, Inc., signed and sealed by Walter A. Tillit, Jr., P.E.

B. TESTS

1. None.

C. CALCULATIONS

1. None.

E. QUALITY ASSURANCE

1. Miami-Dade Department of Regulatory and Economic Resources (RER).

E. MATERIAL CERTIFICATIONS

1. Notice of Acceptance No. **20-0622.03** issued to **Eastman Chemical Company (MA)** for their "**Saflex CP - Saflex and Saflex HP Composite Glass Interlayers with PET Core**", expiring on 12/11/23.

F. STATEMENTS

1. Statement letter of conformance, complying with FBC 2020 (7th Edition), dated January 11, 2021, issued by Tilteco, Inc., signed and sealed by Walter A. Tillit, Jr., P.E.

G. OTHERS

1. This Noa revises **NOA No. 18-0814.02**, expiring 03/25/24.



Ishaq I. Chanda, P.E.
Product Control Unit Supervisor
NOA No. 21-0205.09
Expiration Date: March 25, 2024
Approval Date: May 06, 2021

GENERAL NOTES:

1. COMMERCIAL PASS-THRU HORIZONTAL SLIDING WINDOWS, LARGE MISSILE IMPACT RESISTANT, SHOWN ON THIS PRODUCT APPROVAL DOCUMENT (P.A.D.) HAVE BEEN VERIFIED FOR COMPLIANCE IN ACCORDANCE WITH THE 2020 (7th EDITION) OF THE FLORIDA BUILDING CODE. COMMERCIAL PASS-THRU HORIZONTAL SLIDING WINDOWS, LARGE MISSILE IMPACT RESISTANT, MAY BE INSTALLED AT HIGH VELOCITY HURRICANE ZONES.

DESIGN WIND LOADS SHALL BE DETERMINED AS PER SECTION 1620 OF THE ABOVE MENTIONED CODE, USING ASCE 7-16 AND SHALL NOT EXCEED THE MAXIMUM (A.S.D.) DESIGN PRESSURE RATINGS INDICATED ON NOTE 2.

IN ORDER TO VERIFY THE ABOVE CONDITION, ULTIMATE DESIGN WIND LOADS DETERMINED PER ASCE 7-16 SHALL BE FIRST REDUCED TO A.S.D. DESIGN WIND LOADS BY MULTIPLYING THEM BY 0.6 IN ORDER TO COMPARE THESE W/ MAX. (A.S.D.) DESIGN PRESSURE RATINGS INDICATED ON NOTE 2.

IN ORDER TO VERIFY THAT ANCHORS ON THIS P.A.D., AS TESTED, WERE NOT OVERSTRESSED, A 33% INCREASE IN ALLOWABLE STRESS FOR WIND LOADS WAS **NOT** USED IN THEIR ANALYSIS. FASTENERS SPACING TO WOOD HAS BEEN DETERMINED IN ACCORDANCE WITH N.D.S. 2018. THESE COMMERCIAL PASS-THRU HORIZONTAL SLIDING WINDOWS' ADEQUACY FOR IMPACT AND FATIGUE RESISTANCE HAS BEEN VERIFIED IN ACCORDANCE WITH SECTION 1626 OF THE ABOVE MENTIONED CODE AS PER PROTOCOLS TAS-201, TAS-202, TAS-203 PROTOCOLS, PER A.T.I. LAB REPORT #85482.01-801-18 AND AS PER SUBMITTED STRUCTURAL CALCULATIONS, PERFORMED AS PER SECTION 1616 OF THE FLORIDA BUILDING CODE.

2. MAX. A.S.D. DESIGN PRESSURE RATING FOR THESE COMMERCIAL PASS-THRU HORIZONTAL SLIDING WINDOWS IS: + 70, - 80 P.S.F.

3. THESE COMMERCIAL PASS-THRU HORIZONTAL SLIDING WINDOWS WILL NOT REQUIRE A HURRICANE PROTECTION DEVICE ON INSTALLATIONS UP TO 30 FEET ABOVE GRADE.

4. THESE COMMERCIAL PASS-THRU HORIZONTAL SLIDING WINDOWS ARE APPROVED FOR AIR AND WATER INFILTRATION.

5. ALL COMPONENTS SHALL BE AS INDICATED ON BILL OF MATERIALS ON SHEET 14 AND COMPONENTS DESCRIPTION ON SHEETS 10, 11 & 12.

6. WOOD BUCKS BY OTHERS, MUST BE ANCHORED PROPERLY TO TRANSFER LOADS TO THE BUILDING STRUCTURE. WOOD BUCKS MUST BE SOUTHERN PINE, G = 0.55.

7. ALL ALUMINUM IN CONTACT WITH DISSIMILAR MATERIALS SHALL COMPLY WITH SECTION III-6 OF THE 2015 ALUMINUM DESIGN MANUAL.

8. ANCHOR NOTES: EMBEDMENT AND EDGE DISTANCE ARE BEYOND ANY FINISH.
 (A) TO EXISTING POURED CONCRETE: (MIN. f'c = 3000 PSI), MIN. EDGE DISTANCE (E.D.) = 3".
 - 1/4"Ø TAPCON ANCHORS W/ 1" MIN. EMBEDMENT, AS MANUFACTURED BY ITW/BUILDEX, INC., THRU 1" P.T. WOOD BUCK (IF APPLICABLE).

(B) TO EXISTING A.S.T.M. C-90 CONCRETE BLOCK WALL. MIN. EDGE DISTANCE (E.D.) = 2".
 - 1/4"Ø TAPCON ANCHORS W/ 1" MIN. EMBEDMENT, AS MANUFACTURED BY ITW/BUILDEX, INC., THRU 1" P.T. WOOD BUCK (IF APPLICABLE).

(C) TO EXISTING DOUBLE 2x P.T. WOOD BUCK. MIN. EDGE DISTANCE (E.D.) = 1".
 - 1/4"Ø WOOD SCREWS W/ 3" MIN. THREADED PENETRATION, TO COMPLY W/ NDS 2015.

(D) TO EXISTING MIN. 1/8" THICK ALUMINUM TUBE (6063-T5 ALLOY) MIN. EDGE DISTANCE (E.D.) = 1/2".
 - 1/4"Ø TEK SCREWS, AS MANUFACTURED BY ITW/BUILDEX, INC.

(E) TO EXISTING MIN. 18 GAGE STEEL MEMBER (ASTM A-500, A-653 OR A-36) MIN. EDGE DISTANCE (E.D.) = 1/2".
 - 1/4"Ø TEK SCREWS, AS MANUFACTURED BY ITW/BUILDEX, INC.

9. PROVIDE 1/4" MAX. LOAD BEARING SHIM, WHEN ALLOWED BY THIS DRAWING.

10. PRODUCT MANUFACTURER'S LABEL SHALL BE LOCATED ON A READILY VISIBLE LOCATION AT PRODUCT IN ACCORDANCE WITH SECTION 1709.5 OF THE FLORIDA BUILDING CODE. ONE LABEL SHALL BE PLACED FOR EVERY OPENING.

11. (a) THIS P.A.D. PREPARED BY THIS ENGINEER IS GENERIC AND DOES NOT PROVIDE INFORMATION FOR A SITE SPECIFIC PROJECT; i.e. WHERE THE SITE CONDITIONS DEVIATE FROM THE P.A.D.

(b) CONTRACTOR TO BE RESPONSIBLE FOR THE SELECTION, PURCHASE AND INSTALLATION INCLUDING LIFE SAFETY OF THIS PRODUCT, BASED ON THIS P.A.D., PROVIDED HE/SHE DOES NOT DEVIATE FROM THE CONDITIONS DETAILED ON THIS DOCUMENT. CONSTRUCTION SAFETY AT SITE IS THE CONTRACTOR'S RESPONSIBILITY.

(c) THIS P.A.D. WILL BE CONSIDERED INVALID IF ALTERED BY ANY MEANS.

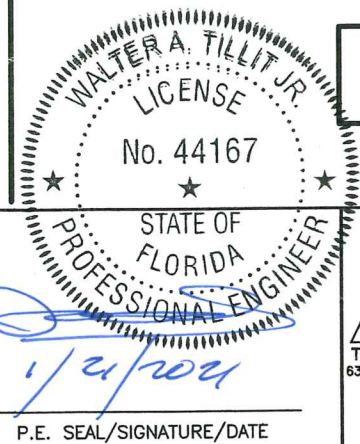
(d) SITE SPECIFIC PROJECTS SHALL BE PREPARED BY A FLORIDA REGISTERED ENGINEER OR ARCHITECT WHICH WILL BECOME THE ENGINEER OF RECORD (E.O.R.) FOR THE PROJECT AND WHO WILL BE RESPONSIBLE FOR THE PROPER USE OF THE P.A.D. ENGINEER OF RECORD, ACTING AS DELEGATED ENGINEER TO THE P.A.D. ENGINEER, SHALL SUBMIT TO THIS LATTER THE SITE SPECIFIC DRAWINGS FOR REVIEW.

(e) ORIGINAL P.A.D. SHALL BEAR THE DATE AND ORIGINAL SEAL AND SIGNATURE OF THE PROFESSIONAL ENGINEER OF RECORD THAT PREPARED IT.

| TABLE OF CONTENTS | |
|-------------------|------------------------------------|
| SHEET # | DESCRIPTION |
| 1 | GENERAL NOTES |
| 2 | IMPACT WINDOWS EXTERIOR ELEVATIONS |
| 3 | SS-4035E-IP WINDOW TYPE 1 (XO) |
| 4 | SC-4030-IP WINDOW TYPE 2 (XO) |
| 5 | SC-3030-IP WINDOW TYPE 3 (XO) |
| 6 | GLAZING DETAILS |
| 7 | DOOR - HEADER & SILL CONNECTIONS |
| 8 | ANCHOR INSTALLATION / LAYOUT |
| 9 | ANCHOR SCHEDULE |
| 10 | STEEL ASSEMBLY COMPONENTS |
| 11 | ALUMINUM EXTRUSIONS COMPONENTS |
| 12 | ASSEMBLY COMPONENTS (CONTINUED) |
| 13 | SASH INSTALLATION DETAILS |
| 14 | BILL OF MATERIALS |

PRODUCT REVIEWED
 as complying with the Florida Building Code
 Acceptance No. 21-020509
 Expiration Date: MAR 25, 2024
 W. Chung
 Miami Dade Product Control
 MIAMI DADE COUNTY

THIS DRAWING SHALL ONLY BE USED TO OBTAIN PERMITS IN THE STATE OF FLORIDA



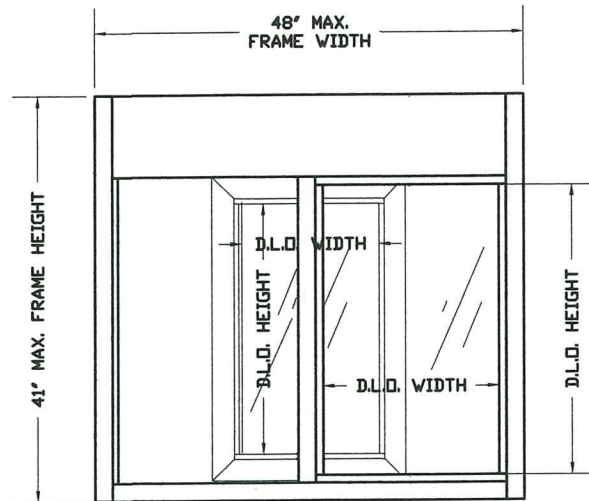
P.E. SEAL/SIGNATURE/DATE
 1/21/2021

© 2021 TILTECO INC.
TILTECO INC.
 TILLIT TESTING & ENGINEERING COMPANY
 6355 N.W. 36th St., Ste. 305, VIRGINIA GARDENS, FL 33166
 Phone: (305)871-1530 Fax: (305)871-1531
 e-mail: tiltaco@aol.com
 CA-0006719
 WALTER A. TILLIT Jr. P.E.
 FLORIDA Lic. # 44167

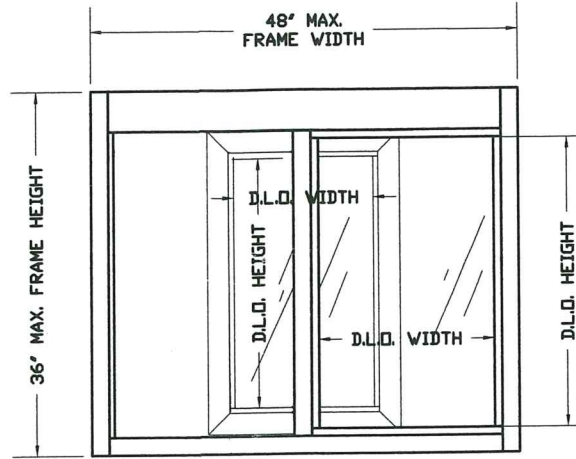
FLORIDA BUILDING CODE (HIGH VELOCITY HURRICANE ZONE)

| | | | | | |
|--|-------------|----------|---------|-------------------|------|
| COMMERCIAL PASS-THRU HORIZONTAL SLIDING WINDOWS LARGE MISSILE IMPACT RESISTANT | | | | DRAWN BY M.P | |
| QUIKSERV CORP. | | | | 01/19/2021 DATE | |
| 11441 BRITTMORE PARK DRIVE, HOUSTON, TEXAS 77041 | | | | 21-029 DRAWING No | |
| PHONE: (713) 937-3437 FAX: (713) 937-9765 | | | | SHEET 1 OF 14 | |
| REV. No | DESCRIPTION | DATE | REV. No | DESCRIPTION | DATE |
| 1 | OLD 17-080 | 01/19/21 | 3 | | |
| 2 | | | 4 | | |

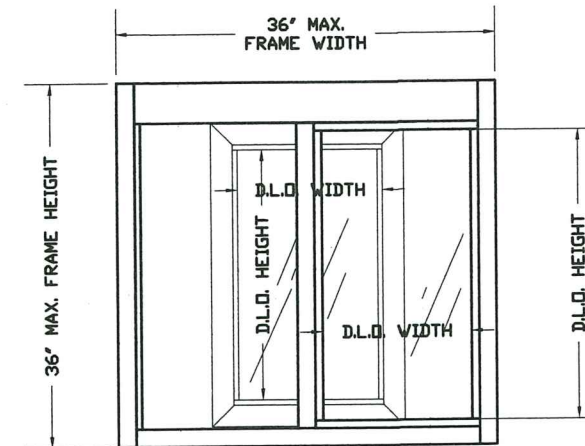
COMMERCIAL PASS-THRU WINDOWS LARGE MISSILE IMPACT RESISTANT EXTERIOR ELEVATIONS



**SS-4035E-IP
WINDOW TYPE 1 (XO)**
N.T.S.



**SC-4030-IP
WINDOW TYPE 2 (XO)**
N.T.S.



**SC-3030-IP
WINDOW TYPE 3 (XO)**
N.T.S.

| MODEL | WINDOW TYPE | ACTUAL FRAME MAX. DIMENSION | MAX. D.L.O. DIMENSIONS | GLAZING TYPE |
|-------------|-------------|-----------------------------|--|---------------------|
| SS-4035E-IP | 1 | 48"(W) X 41"(H) | (X) 16-3/4"(W) X 24"(H) (O) 19-1/2"(W) X 28"(H) | SEE PAGE 6 OF 14 |
| SC-4030-IP | 2 | 48"(W) X 36"(H) | (X) 16-3/4"(W) X 24"(H) (O) 19-1/2"(W) X 28"(H) | |
| SC-3030-IP | 3 | 36"(W) X 36"(H) | (X) 11"(W) X 24"(H) (O) 15-1/2"(W) X 28"(H) | |

PRODUCT REVISED
as complying with the Florida
Building Code
Acceptance No. 21-0205-09
Expiration Date 3/25/24
[Signature]
Miami Made Product Control

MIAMI DADE COUNTY

FLORIDA BUILDING CODE (HIGH VELOCITY HURRICANE ZONE)

P.E. SEAL/SIGNATURE/DATE

© 2021 TILTECO INC.

TILTECO INC.
TILLIT TESTING & ENGINEERING COMPANY
6355 N.W. 36th. St., Ste. 305, VIRGINIA GARDENS, FL 33166
Phone : (305)871-1530 . Fax : (305)871-1531
e-mail: tilteco@aol.com
CA-0006719
WALTER A. TILLIT Jr. P.E.
FLORIDA Lic. # 44167

COMMERCIAL PASS-THRU HORIZONTAL SLIDING
WINDOWS LARGE MISSILE IMPACT RESISTANT

QUIKSERV CORP.
11441 BRITTMORE PARK DRIVE,
HOUSTON, TEXAS 77041
PHONE: (713) 937-3437 FAX: (713) 937-9765

| REV. No | DESCRIPTION | DATE | REV. No | DESCRIPTION | DATE |
|---------|-------------|----------|---------|-------------|------|
| 1 | OLD 17-080 | 01/19/21 | 3 | | |
| 2 | | | 4 | | |

DRAWN BY
M.P.

01/19/2021
DATE

21-029
DRAWING No

SHEET 2 OF 14

SEE SHEET 8 OF 14 (TYP)

SEE SHEET 6 OF 14

EXTERIOR

SEE SHEET 6 OF 14

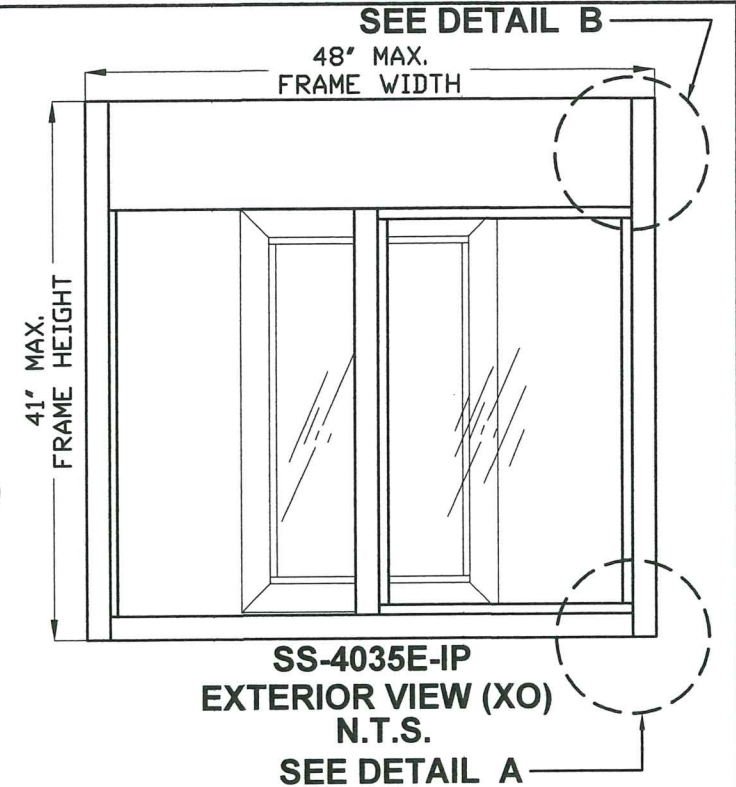
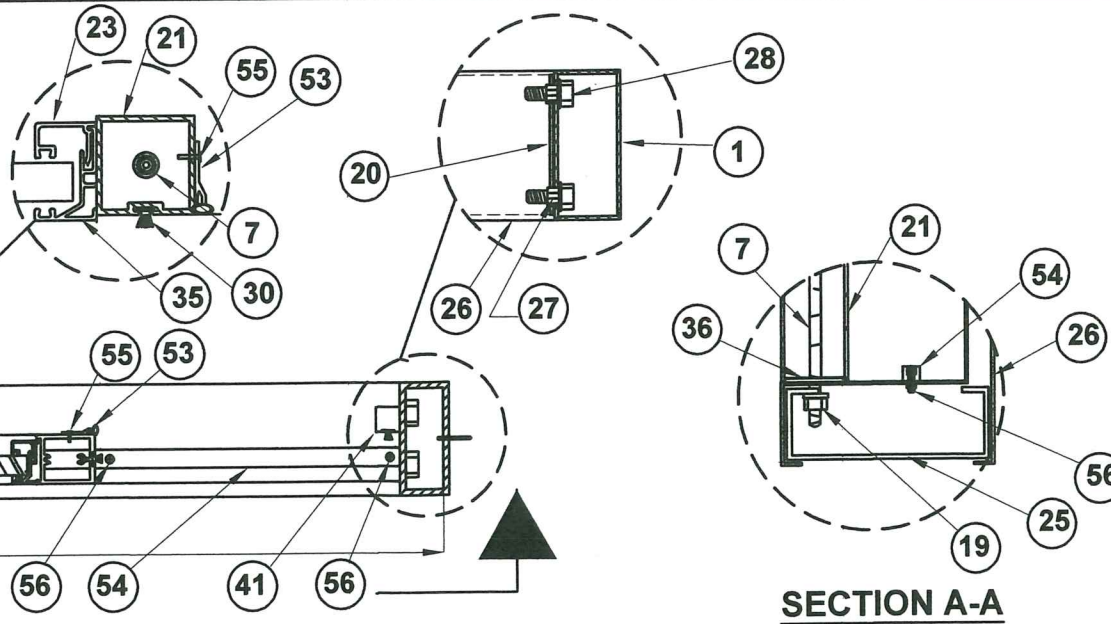
A

48' MAX. FRAME WIDTH

3

1

HORIZONTAL SECTION VIEW
N.T.S.



SS-4035E-IP
EXTERIOR VIEW (XO)
N.T.S.
SEE DETAIL A

SEE SHEET 6 OF 14

48' MAX. FRAME WIDTH

41' MAX. FRAME HEIGHT

1

28' MAX. D.L.D.

15' MAX. D.L.D.

19' MAX. D.L.D.

1/2

3/4

MAX. D.L.D.

24' MAX. D.L.D.

MAX. D.L.D.

48

49

3

INTERIOR VIEW
N.T.S.

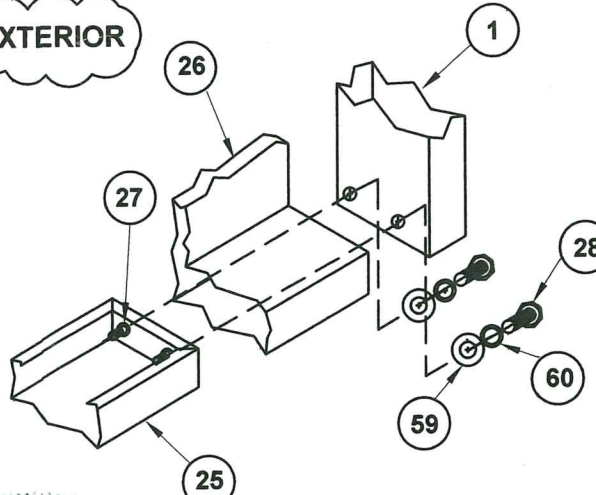
WINDOW TYPE 1 (XO)
SS-4035E-IP

SEE SHEET 7 OF 14

SEE SHEET 6 OF 14

EXTERIOR

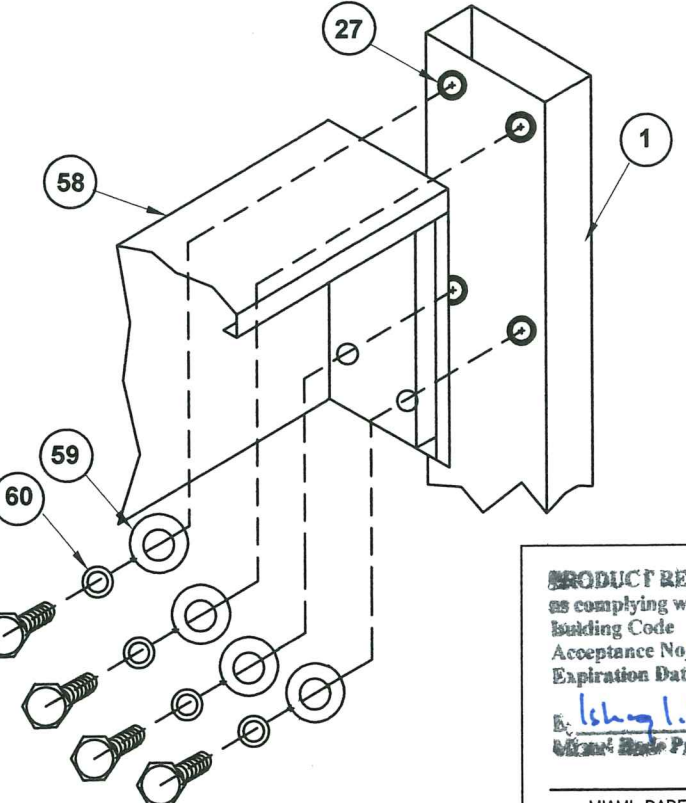
41' MAX. FRAME HEIGHT



DETAIL A (CORNER SILL)
N.T.S.

WALTER A. TILLIT JR.
LICENSE
No. 44167
STATE OF FLORIDA
PROFESSIONAL ENGINEER

P.E. SEAL/SIGNATURE/DATE



DETAIL B (CORNER HEAD)
N.T.S.

PRODUCT REVISED
as complying with the Florida
Building Code
Acceptance No. 21-0205-09
Expiration Date 3/2024
By: *Walter A. Tillit Jr.*
Miami Inco Product Control
MIAMI DADE COUNTY

FLORIDA BUILDING CODE (HIGH VELOCITY HURRICANE ZONE)

© 2021 TILTECO INC.

TILTECO INC.

TILLIT TESTING & ENGINEERING COMPANY
6355 N.W. 36th St., Ste. 305, VIRGINIA GARDENS, FL 33166
Phone : (305)871-1530 . Fax : (305)871-1531
e-mail: tiltco@aol.com
CA-0006719
WALTER A. TILLIT Jr. P.E.
FLORIDA Lic. # 44167

COMMERCIAL PASS-THRU HORIZONTAL SLIDING
WINDOWS LARGE MISSILE IMPACT RESISTANT

QUIKSERV CORP.

11441 BRITTMORE PARK DRIVE,
HOUSTON, TEXAS 77041

PHONE: (713) 937-3437 FAX: (713) 937-9765

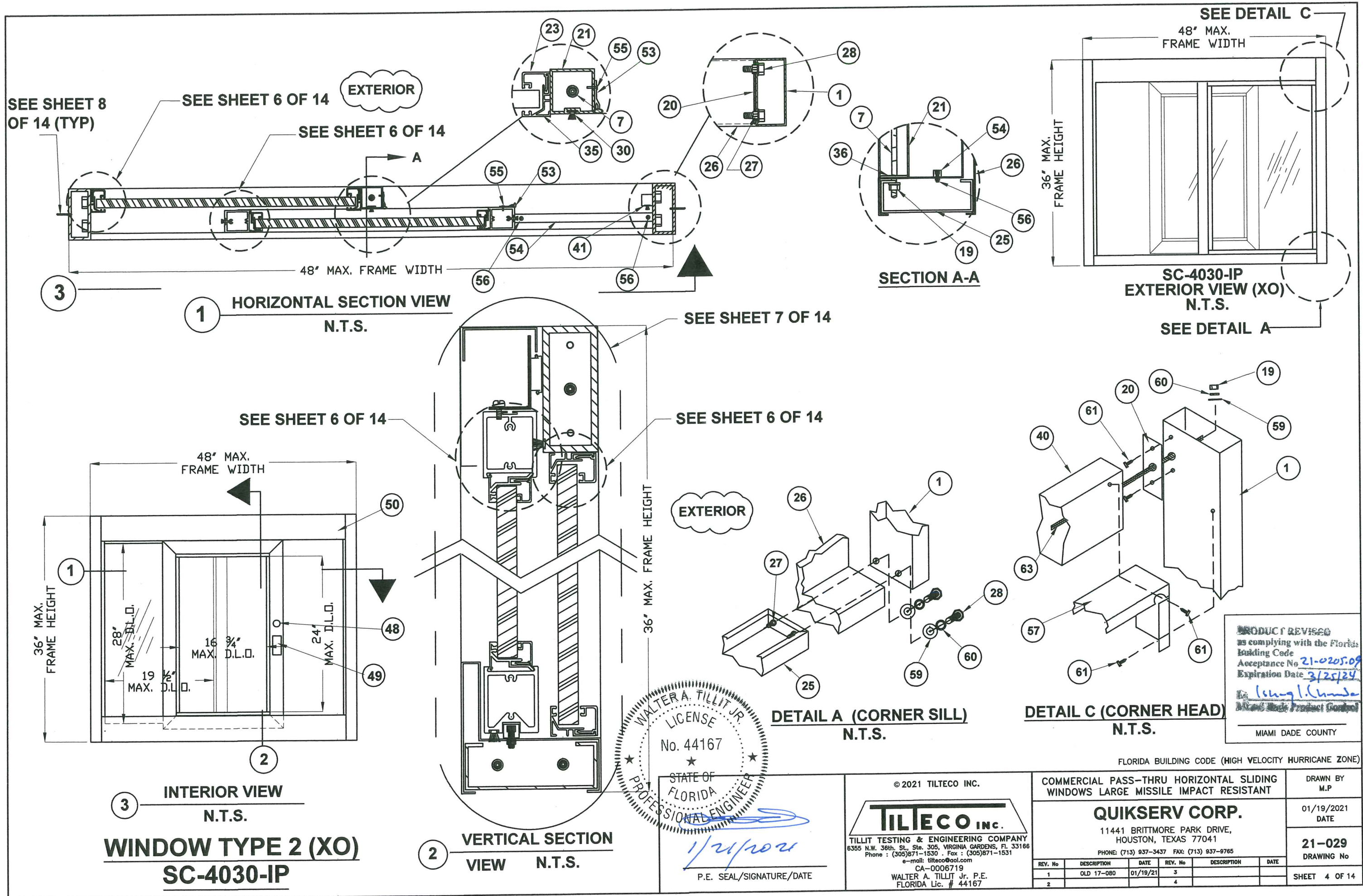
| REV. No | DESCRIPTION | DATE | REV. No | DESCRIPTION | DATE |
|---------|-------------|----------|---------|-------------|------|
| 1 | OLD 17-080 | 01/19/21 | 3 | | |
| 2 | | | 4 | | |

DRAWN BY
M.P.

01/19/2021
DATE

21-029
DRAWING No

SHEET 3 OF 14



PRODUCT REVISED
 as complying with the Florida
 Building Code
 Acceptance No. 21-0205.09
 Expiration Date 3/25/24
Walter A. Tillit Jr.
 Miami Dade Product Control
 MIAMI DADE COUNTY

WALTER A. TILLIT JR.
 LICENSE
 No. 44167
 STATE OF
 FLORIDA
 PROFESSIONAL ENGINEER
1/24/2021

© 2021 TILTECO INC.
TILTECO INC.
 TILLIT TESTING & ENGINEERING COMPANY
 6355 N.W. 36th St., Ste. 305, VIRGINIA GARDENS, FL 33166
 Phone : (305)871-1530 • Fax : (305)871-1531
 e-mail: tilteco@aol.com
 CA-0006719
 WALTER A. TILLIT JR. P.E.
 FLORIDA Lic. # 44167

FLORIDA BUILDING CODE (HIGH VELOCITY HURRICANE ZONE)

COMMERCIAL PASS-THRU HORIZONTAL SLIDING
 WINDOWS LARGE MISSILE IMPACT RESISTANT

QUIKSERV CORP.
 11441 BRITTMORE PARK DRIVE,
 HOUSTON, TEXAS 77041
 PHONE: (713) 937-3437 FAX: (713) 937-9765

| REV. No | DESCRIPTION | DATE | REV. No | DESCRIPTION | DATE |
|---------|-------------|----------|---------|-------------|------|
| 1 | OLD 17-080 | 01/19/21 | 3 | | |
| 2 | | | 4 | | |

DRAWN BY
 M.P.
 01/19/2021
 DATE
21-029
 DRAWING No
 SHEET 4 OF 14

WINDOW TYPE 2 (XO)
SC-4030-IP

2 VERTICAL SECTION
 VIEW N.T.S.

3 INTERIOR VIEW
 N.T.S.

DETAIL A (CORNER SILL)
 N.T.S.

DETAIL C (CORNER HEAD)
 N.T.S.

1 HORIZONTAL SECTION VIEW
 N.T.S.

SECTION A-A

SC-4030-IP
EXTERIOR VIEW (XO)
 N.T.S.

SEE DETAIL A

SEE DETAIL C

SEE SHEET 8
 OF 14 (TYP)

SEE SHEET 6 OF 14

SEE SHEET 6 OF 14

EXTERIOR

48' MAX. FRAME WIDTH

SEE SHEET 7 OF 14

SEE SHEET 6 OF 14

SEE SHEET 6 OF 14

48' MAX.
 FRAME WIDTH

36' MAX.
 FRAME HEIGHT

36' MAX. FRAME HEIGHT

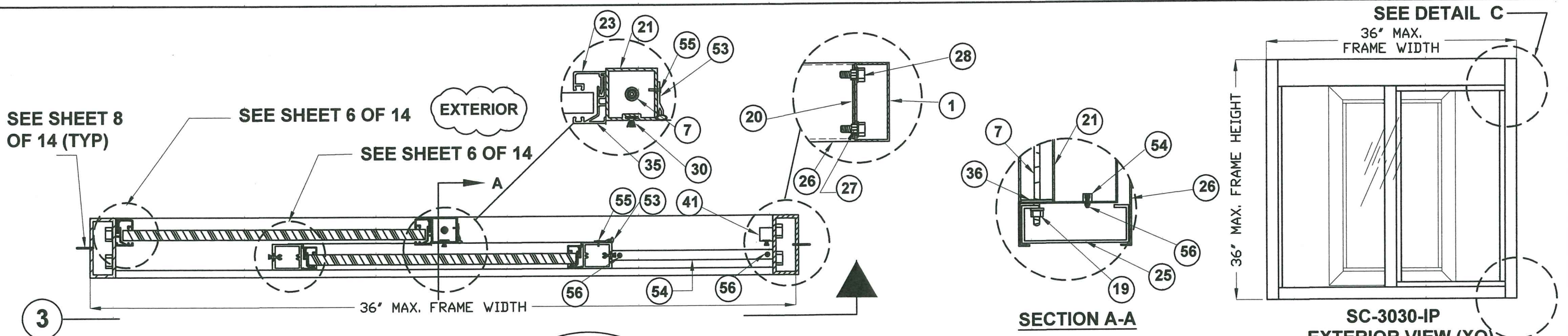
EXTERIOR

48' MAX.
 FRAME WIDTH

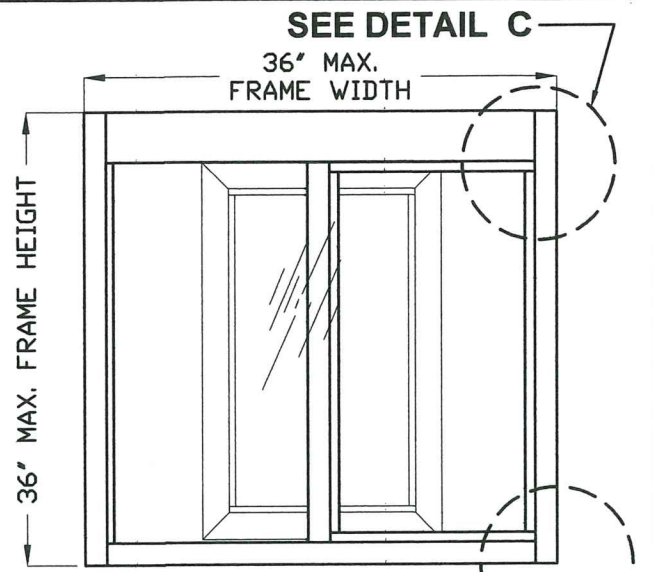
36' MAX.
 FRAME HEIGHT

28' MAX. D.L.O.
 16 3/4' MAX. D.L.O.
 19 1/2' MAX. D.L.O.
 24' MAX. D.L.O.

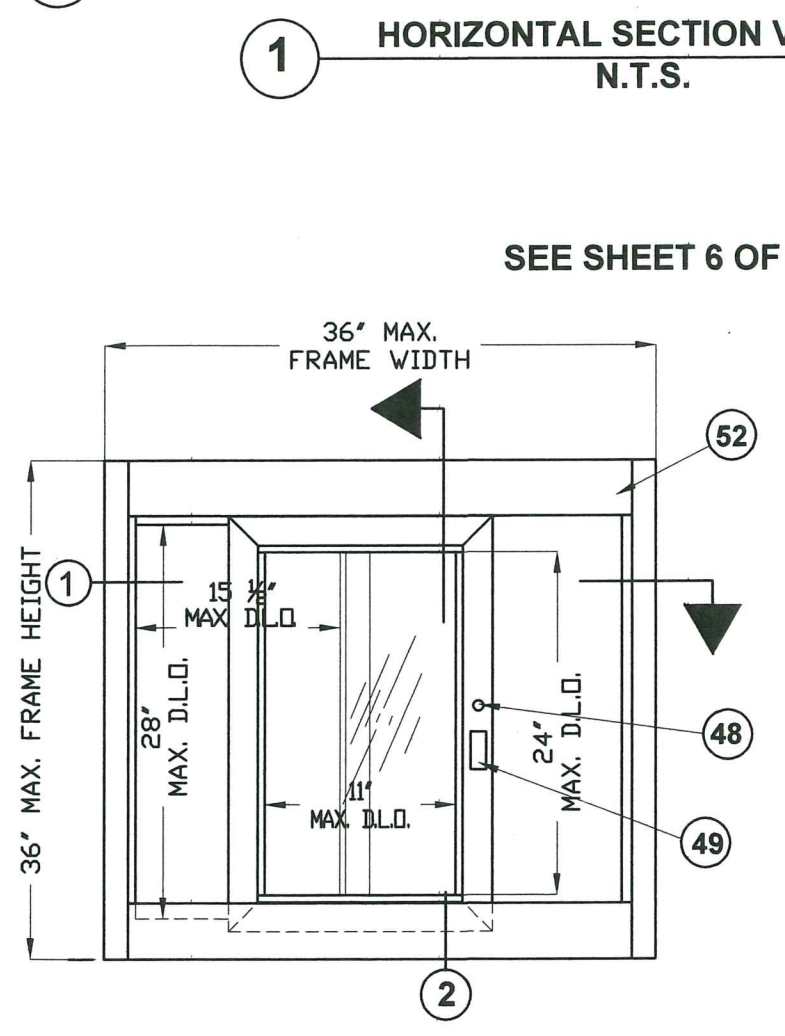
FLORIDA BUILDING CODE (HIGH VELOCITY HURRICANE ZONE)



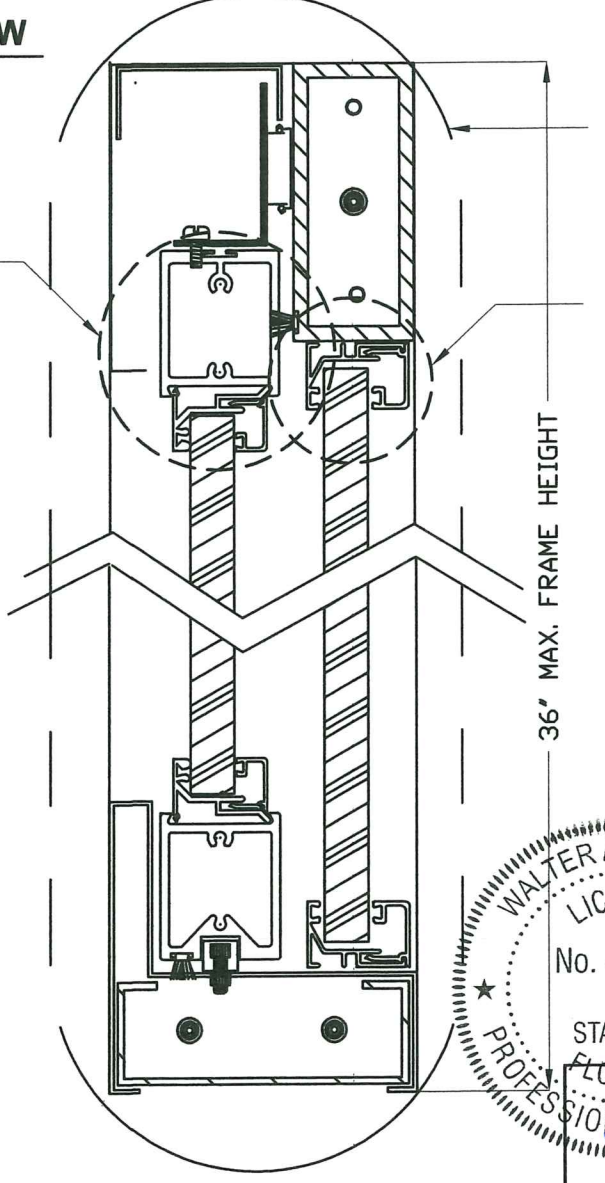
1 HORIZONTAL SECTION VIEW
N.T.S.



SC-3030-IP
EXTERIOR VIEW (XO)
N.T.S.
SEE DETAIL A

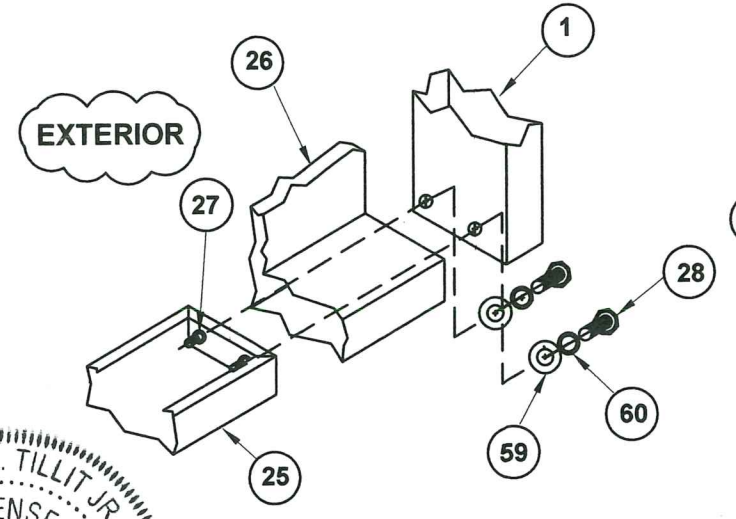


2 INTERIOR VIEW
N.T.S.

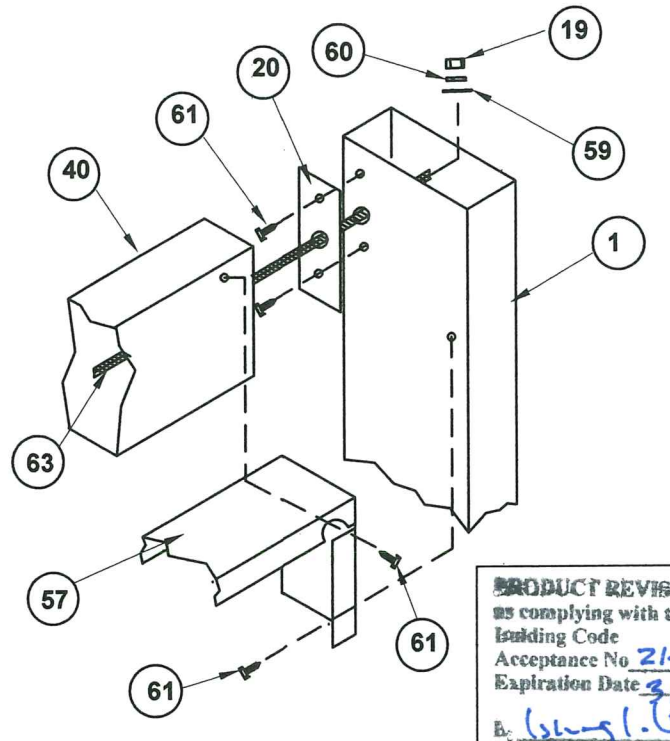


3 VERTICAL SECTION
VIEW N.T.S.

SEE SHEET 7 OF 14
SEE SHEET 6 OF 14



DETAIL A (CORNER SILL)
N.T.S.



DETAIL C (CORNER HEAD)
N.T.S.

PRODUCT REVIEWED
as complying with the Florida
Building Code
Acceptance No. 21-0205-09
Expiration Date 3/25/24
By: Walter A. Tillit Jr.
Miami Dade County Product Control
MIAMI DADE COUNTY

FLORIDA BUILDING CODE (HIGH VELOCITY HURRICANE ZONE)

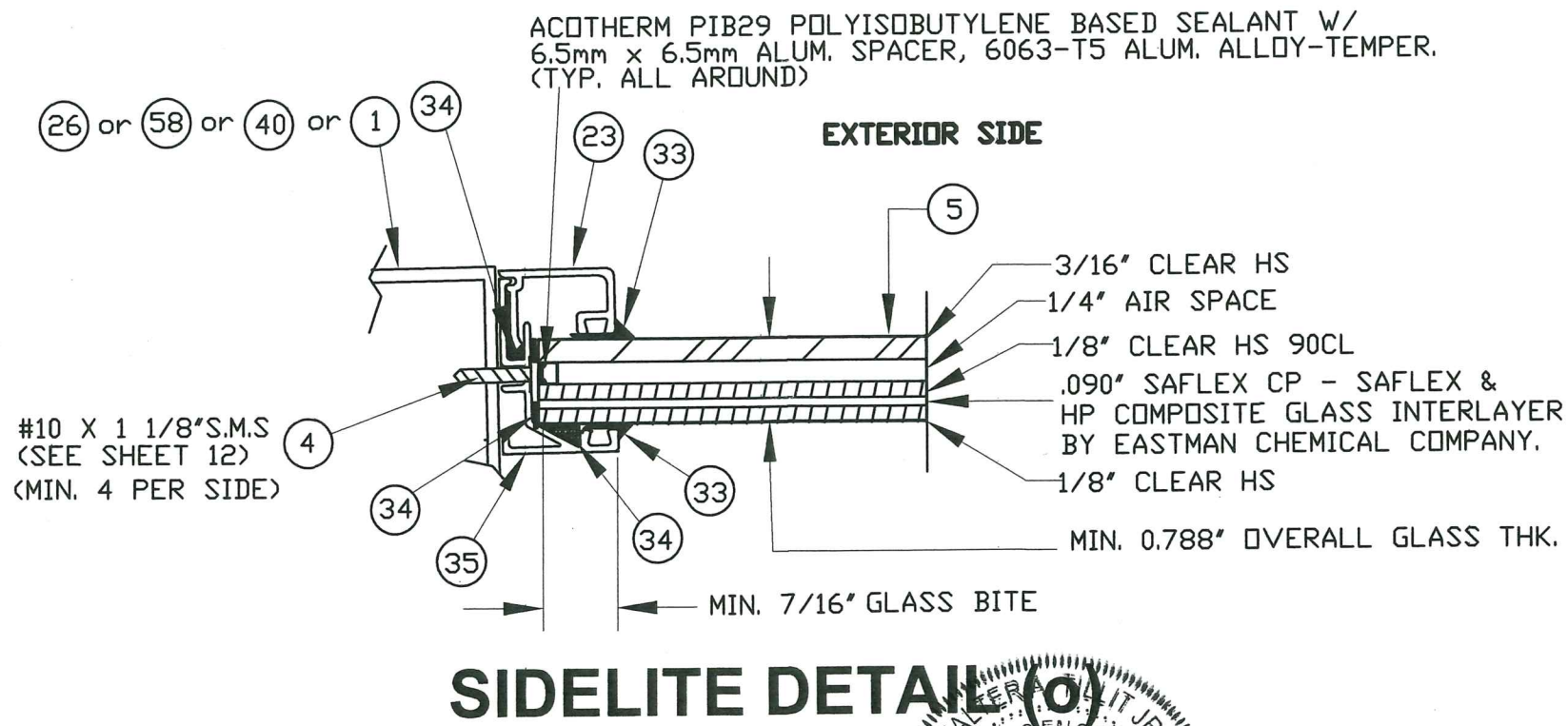
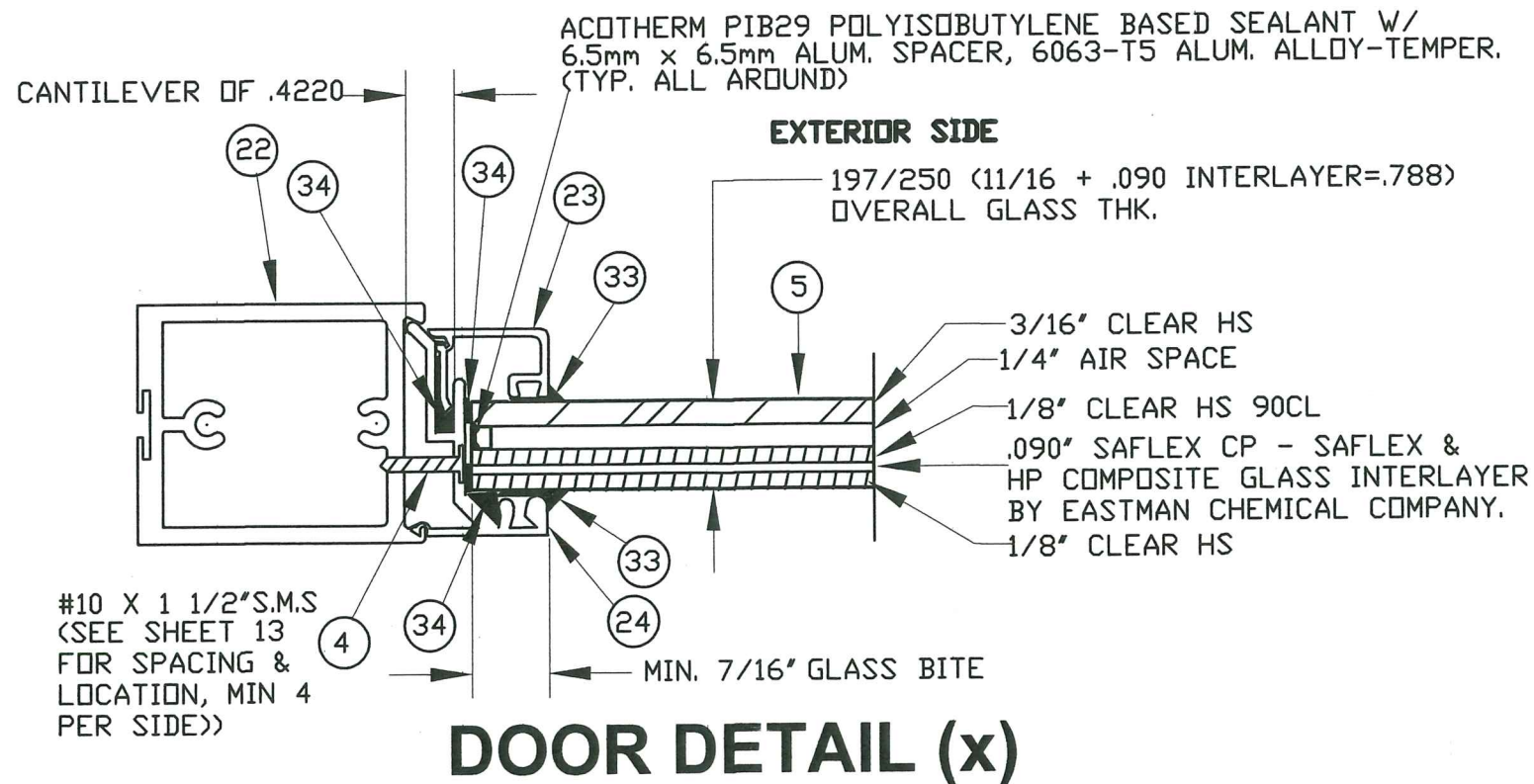
WINDOW TYPE 3 (XO)
SC-3030-IP

WALTER A. TILLIT JR.
LICENSE
No. 44167
STATE OF
FLORIDA
PROFESSIONAL ENGINEER

P.E. SEAL/SIGNATURE/DATE

© 2021 TILTECO INC.
TILTECO INC.
TILLIT TESTING & ENGINEERING COMPANY
6355 N.W. 36th. St., Ste. 305, VIRGINIA GARDENS, FL 33166
Phone : (305)871-1530 Fax : (305)871-1531
e-mail: tilteco@aol.com
CA-0006719
WALTER A. TILLIT Jr. P.E.
FLORIDA Lic. # 44167

| COMMERCIAL PASS-THRU HORIZONTAL SLIDING WINDOWS LARGE MISSILE IMPACT RESISTANT | | DRAWN BY M.P. | |
|--|-------------|-------------------|---------|
| QUIKSERV CORP. | | 01/19/2021 DATE | |
| 11441 BRITTMORE PARK DRIVE, HOUSTON, TEXAS 77041 | | 21-029 DRAWING No | |
| PHONE: (713) 937-3437 FAX: (713) 937-9765 | | SHEET 5 OF 14 | |
| REV. No | DESCRIPTION | DATE | REV. No |
| 1 | OLD 17-080 | 01/19/21 | 3 |
| 2 | | | 4 |



PRODUCT REVIEWED
as complying with the Florida
Building Code
Acceptance No. 21-0205-04
Expiration Date 3/25/24
E. Ishay, L.L.M.
Product Control

MIAMI DADE COUNTY

FLORIDA BUILDING CODE (HIGH VELOCITY HURRICANE ZONE)

5 — INSULATED GLAZING DETAIL

© 2021 TILTECO INC.

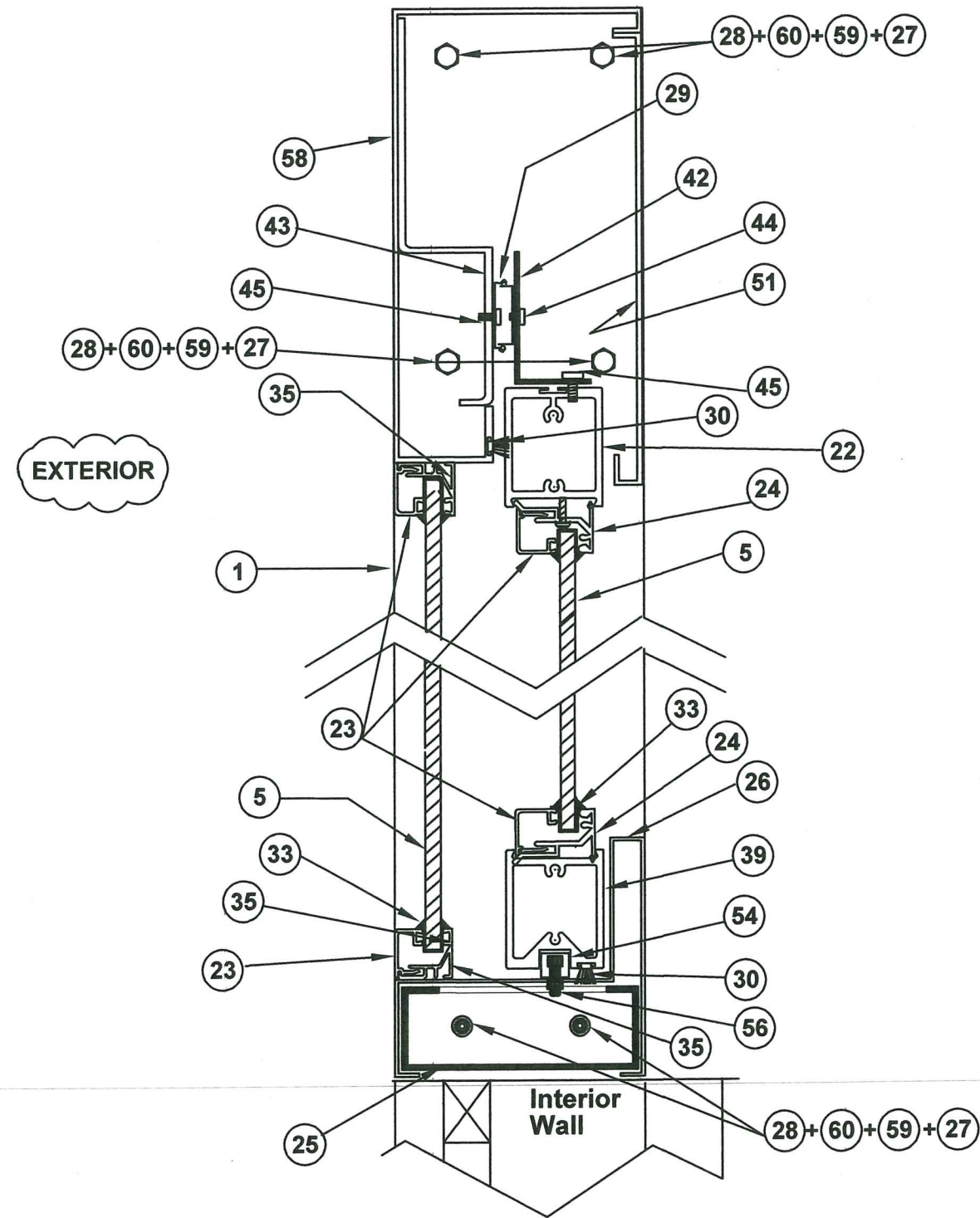
PROFESSIONAL ENGINEER
WALTER A. TILLIT JR.
No. 44167
STATE OF FLORIDA
P.E. SEAL/SIGNATURE/DATE

TILTECO INC.
TILTECO TESTING & ENGINEERING COMPANY
8355 N.W. 36th St., Ste. 305, VIRGINIA GARDENS, FL 33166
Phone: (305)871-1530 Fax: (305)871-1531
e-mail: tilteco@aol.com
CA-0006719
WALTER A. TILLIT JR. P.E.
FLORIDA Lic. # 44167

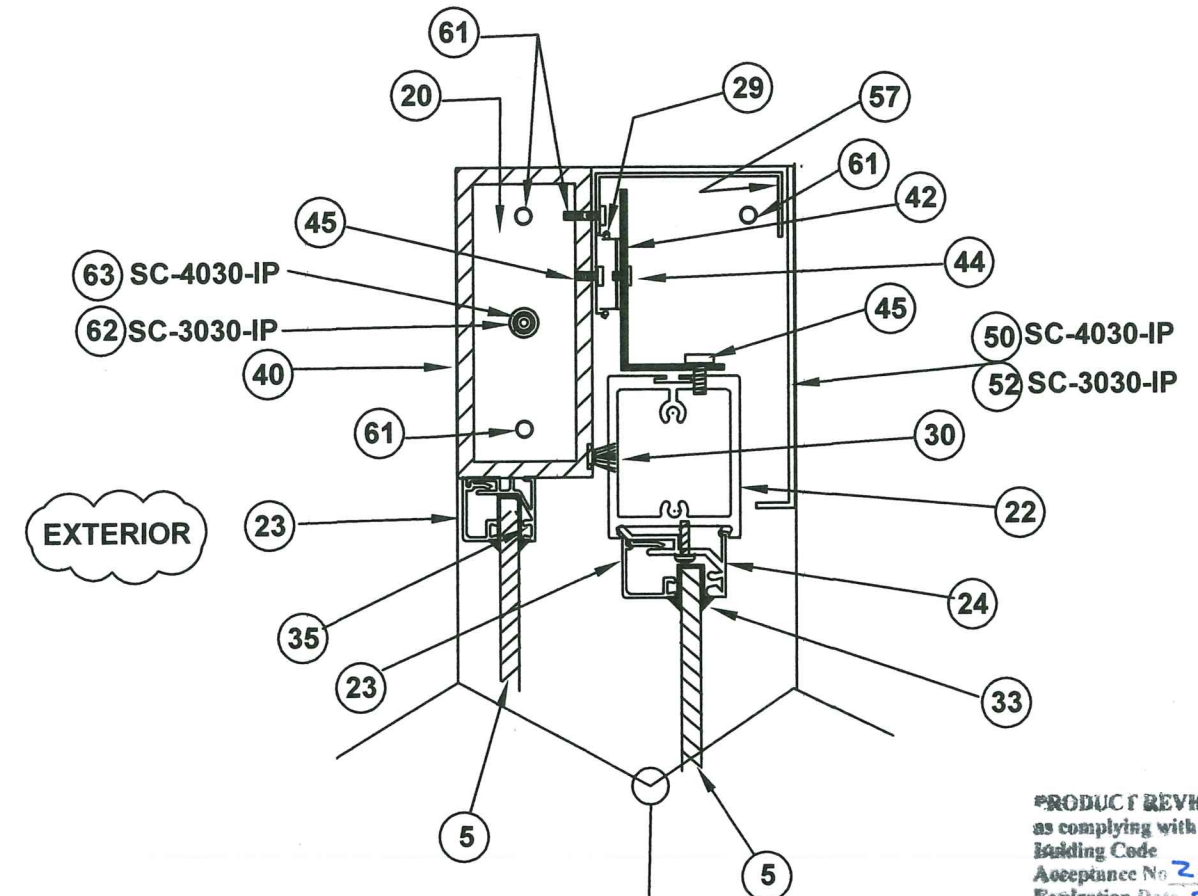
| COMMERCIAL PASS-THRU HORIZONTAL SLIDING WINDOWS LARGE MISSILE IMPACT RESISTANT | | DRAWN BY M.P. | | | |
|--|-------------|--------------------|---------|-------------|------|
| QUIKSERV CORP. 11441 BRITTMORE PARK DRIVE, HOUSTON, TEXAS 77041 PHONE: (713) 937-3437 FAX: (713) 937-9765 | | 01/19/2021 DATE | | | |
| 21-029 DRAWING No | | SHEET 6 OF 14 | | | |
| REV. No | DESCRIPTION | DATE | REV. No | DESCRIPTION | DATE |
| 1 | OLD 17-080 | 01/19/21 | 3 | | |
| 2 | | | 4 | | |

DOOR - HEADER CONNECTIONS

MODEL SS-4035E-IP TYPE 1 WINDOW, HEADER



MODEL SC-4030-IP TYPE 2 WINDOW, HEADER MODEL SC-3030-IP TYPE 3 WINDOW, HEADER



CONTINUED EQUAL TO WINDOW TYPE 1

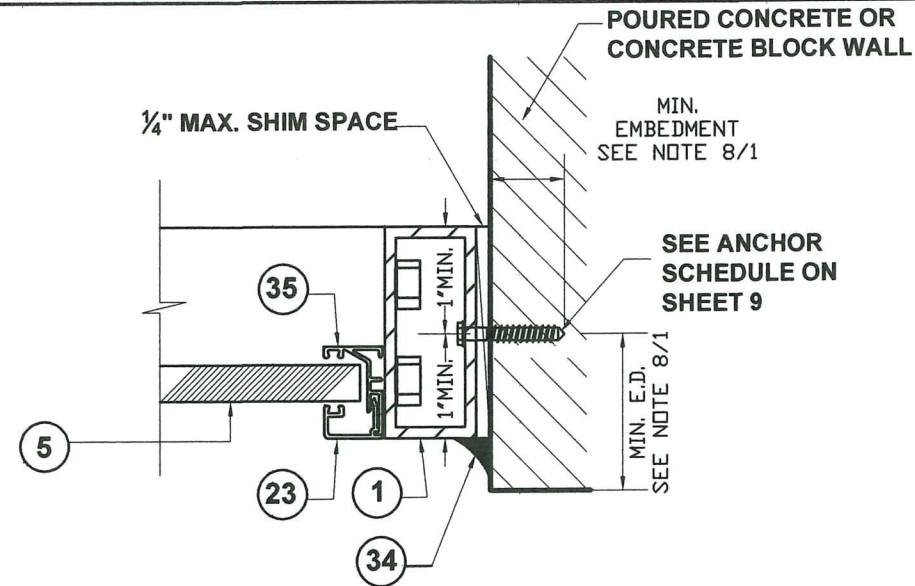
PRODUCT REVISED
as complying with the Florida
Building Code
Acceptance No. 21-0205.09
Expiration Date 3/25/24
E. Shang, I. Chandra
Miami Dade County

MIAMI DADE COUNTY

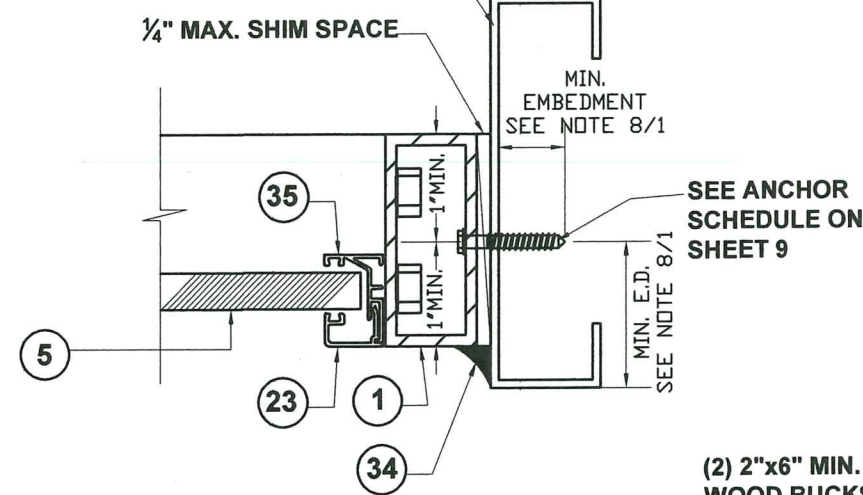
FLORIDA BUILDING CODE (HIGH VELOCITY HURRICANE ZONE)

| <p>WALTER A. TILLIT JR. LICENSE No. 44167 STATE OF FLORIDA PROFESSIONAL ENGINEER</p> | <p>© 2021 TILTECO INC.</p> <p>TILTECO INC. TILLIT TESTING & ENGINEERING COMPANY 3555 N.W. 36th St., Ste. 305, VIRGINIA GARDENS, FL 33166 Phone : (305)871-1530 . Fax : (305)871-1531 e-mail: tilteco@aol.com CA-0006719 WALTER A. TILLIT Jr. P.E. FLORIDA Lic. # 44167</p> | <p>COMMERCIAL PASS-THRU HORIZONTAL SLIDING WINDOWS LARGE MISSILE IMPACT RESISTANT</p> <p>QUIKSERV CORP. 11441 BRITTMORE PARK DRIVE, HOUSTON, TEXAS 77041 PHONE: (713) 937-3437 FAX: (713) 937-9765</p> | <p>DRAWN BY M.P.</p> | | | | | | | | | | | | | | | | |
|--|--|--|--------------------------|-------------|------|---------|-------------|------|---|------------|----------|---|--|--|---|--|--|---|--|
| | | <table border="1" style="width: 100%; border-collapse: collapse;"> <thead> <tr> <th>REV. No</th> <th>DESCRIPTION</th> <th>DATE</th> <th>REV. No</th> <th>DESCRIPTION</th> <th>DATE</th> </tr> </thead> <tbody> <tr> <td>1</td> <td>OLD 17-080</td> <td>01/19/21</td> <td>3</td> <td></td> <td></td> </tr> <tr> <td>2</td> <td></td> <td></td> <td>4</td> <td></td> <td></td> </tr> </tbody> </table> | REV. No | DESCRIPTION | DATE | REV. No | DESCRIPTION | DATE | 1 | OLD 17-080 | 01/19/21 | 3 | | | 2 | | | 4 | |
| REV. No | DESCRIPTION | DATE | REV. No | DESCRIPTION | DATE | | | | | | | | | | | | | | |
| 1 | OLD 17-080 | 01/19/21 | 3 | | | | | | | | | | | | | | | | |
| 2 | | | 4 | | | | | | | | | | | | | | | | |
| <p>P.E. SEAL/SIGNATURE/DATE</p> | | <p>SHEET 7 OF 14</p> | | | | | | | | | | | | | | | | | |

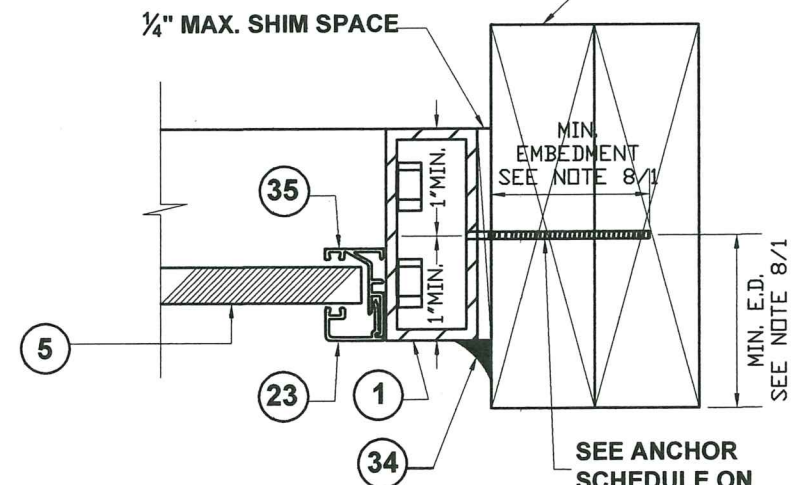
ANCHOR INSTALLATION AND LAYOUT



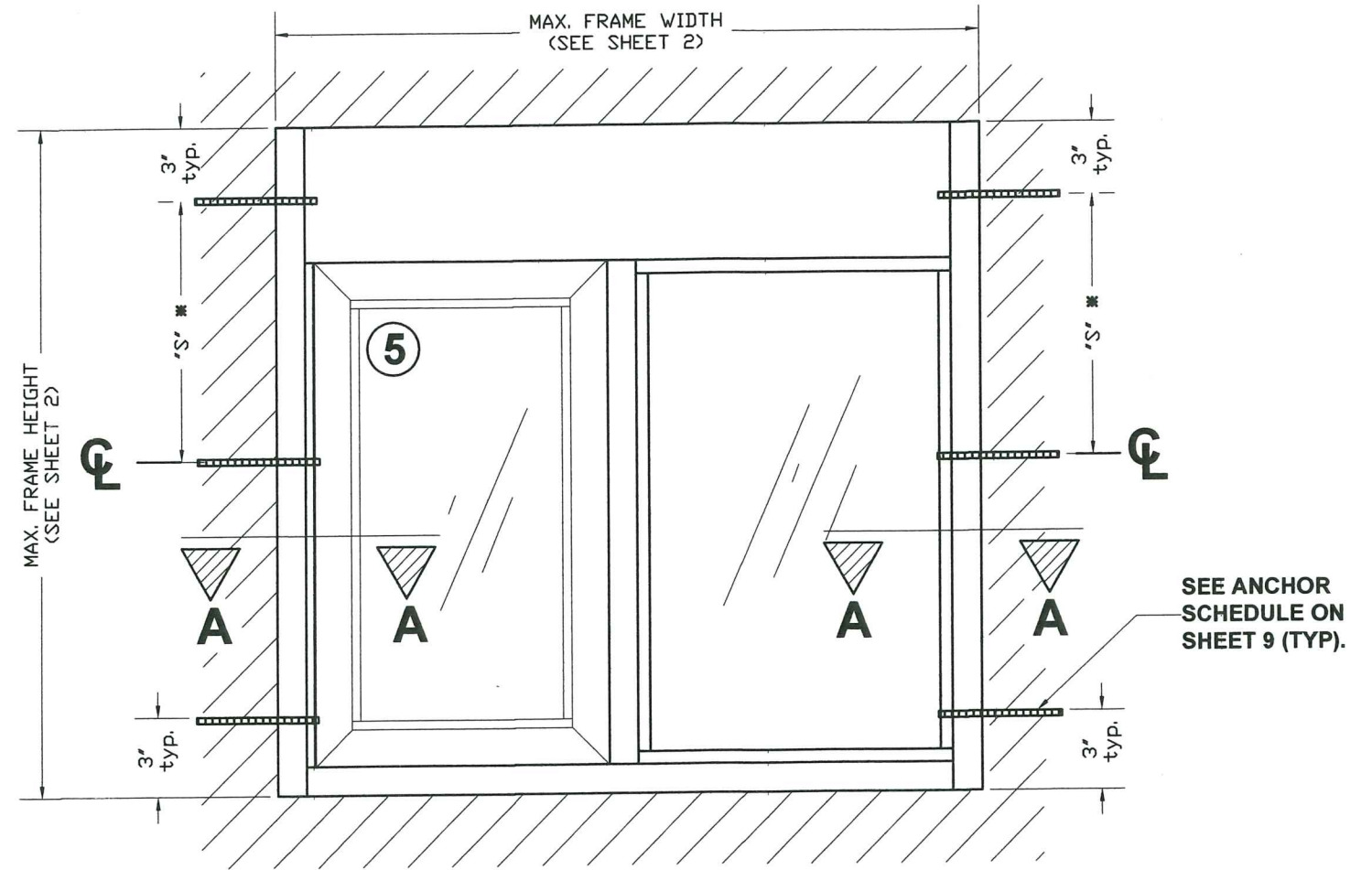
1/8" 6063-T5 ALUM.
ALLOY OR 18 GAGE
MIN. WALL THICKNESS,
STEEL (ASTM A-500,
A-653 OR A-36)



(2) 2"x6" MIN. P.T.
WOOD BUCKS
REQ'D.



SECTION A-A
NTS



SEE ANCHOR
SCHEDULE ON
SHEET 9 (TYP).

TYPICAL FRAME ELEVATION
NTS

* "S" = MAXIMUM SPACING
SEE SHEET 9.

PRODUCT REVISED
as complying with the Florida
Building Code
Acceptance No. 21-020509
Expiration Date 3/21/24
By: [Signature]
Miami Made Product Certified

MIAMI DADE COUNTY

FLORIDA BUILDING CODE (HIGH VELOCITY HURRICANE ZONE)

WALTER A. TILLIT JR.
LICENSE
No. 44167
STATE OF
FLORIDA
PROFESSIONAL ENGINEER

© 2021 TILTECO INC.
TILTECO INC.
TILLIT TESTING & ENGINEERING COMPANY
6355 N.W. 36th St., Ste. 305, VIRGINIA GARDENS, FL 33166
Phone: (305) 871-1530 Fax: (305) 871-1531
e-mail: tilteco@aol.com
CA-0006719
WALTER A. TILLIT Jr. P.E.
FLORIDA Lic. # 44167

| COMMERCIAL PASS-THRU HORIZONTAL SLIDING WINDOWS LARGE MISSILE IMPACT RESISTANT | | | DRAWN BY M.P | | |
|--|-------------|----------|--------------------|-------------|------|
| QUIKSERV CORP. 11441 BRITTMORE PARK DRIVE, HOUSTON, TEXAS 77041 PHONE: (713) 937-3437 FAX: (713) 937-9765 | | | 01/19/2021 DATE | | |
| 21-029 DRAWING No | | | SHEET 8 OF 14 | | |
| REV. No | DESCRIPTION | DATE | REV. No | DESCRIPTION | DATE |
| 1 | OLD 17-080 | 01/19/21 | 3 | | |
| 2 | | | 4 | | |

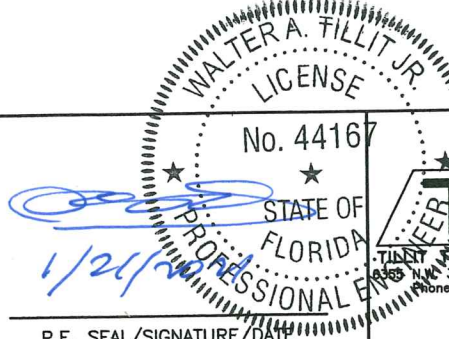

ANCHOR SCHEDULE

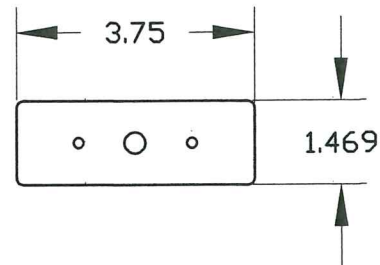
| MAXIMUM ANCHOR SPACING "S" SCHEDULE AT JAMB | | | |
|--|------------------------------------|-------------------------------------|-------------|
| DESIGN LOAD (PSF) NEGATIVE LOAD | SUBSTRATE | ANCHOR TYPE | MAX SPACING |
| 50 OR LESS | POURED CONCRETE (SEE NOTE 8A/1) | 1/4"Ø ITW BUILDEX TAPCON ANCHORS | 16 1/2" |
| | CONCRETE BLOCK (SEE NOTE 8B/1) | 1/4"Ø ITW BUILDEX TAPCON ANCHORS | 16 1/2" |
| | ALUMINUM MEMBER (SEE NOTE 8D/1) | 1/4"Ø ITW BUILDEX TEK SCREWS | 17 1/2" |
| | STEEL MEMBER (SEE NOTE 8E/1) | 1/4"Ø ITW BUILDEX TEK SCREWS | 17 1/2" |
| | WOOD (SEE NOTE 8C/1) | 1/4"Ø WOOD SCREWS (NDS) | 17 1/2" |
| > 50 TO 70 | POURED CONCRETE (SEE NOTE 8A/1) | 1/4"Ø ITW BUILDEX TAPCON ANCHORS | 11 1/2" |
| | CONCRETE BLOCK (SEE NOTE 8B/1) | 1/4"Ø ITW BUILDEX TAPCON ANCHORS | 11 1/2" |
| | ALUMINUM MEMBER (SEE NOTE 8D/1) | 1/4"Ø ITW BUILDEX TEK SCREWS | 16" |
| | STEEL MEMBER (SEE NOTE 8E/1) | 1/4"Ø ITW BUILDEX TEK SCREWS | 16" |
| | WOOD (SEE NOTE 8C/1) | 1/4"Ø WOOD SCREWS (NDS) | 13 1/2" |
| > 70 TO 80 | POURED CONCRETE (SEE NOTE 8A/1) | 1/4"Ø ITW BUILDEX TAPCON ANCHORS | 10" |
| | CONCRETE BLOCK (SEE NOTE 8B/1) | 1/4"Ø ITW BUILDEX TAPCON ANCHORS | 10" |
| | ALUMINUM MEMBER (SEE NOTE 8D/1) | 1/4"Ø ITW BUILDEX TEK SCREWS | 14" |
| | STEEL MEMBER (SEE NOTE 8E/1) | 1/4"Ø ITW BUILDEX TEK SCREWS | 14" |
| | WOOD (SEE NOTE 8C/1) | 1/4"Ø WOOD SCREWS (NDS) | 11 1/2" |

PRODUCT REVIEWED
 as complying with the Florida
 Building Code
 Acceptance No. 21-0205-09
 Expiration Date 3/25/24
 By Isaac L. Howard
 Miami Beach Product Control

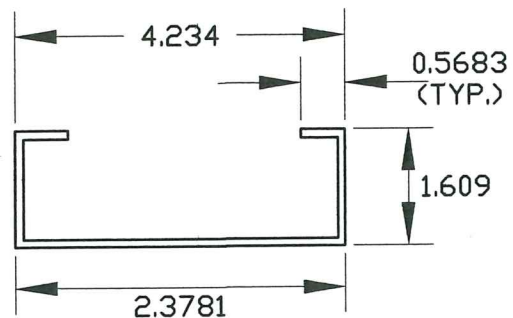
 MIAMI DADE COUNTY

FLORIDA BUILDING CODE (HIGH VELOCITY HURRICANE ZONE)

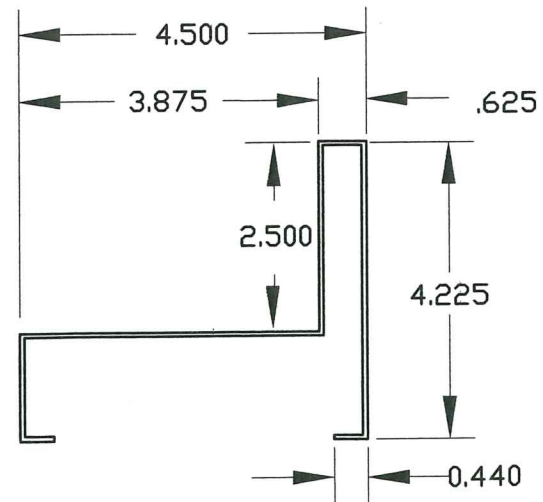
|  P.E. SEAL/SIGNATURE/DATE |  © 2021 TILTECO INC. TESTING & ENGINEERING COMPANY 3635 N.W. 36th St., Ste. 305, VIRGINIA GARDENS, FL 33186 Phone: (305)871-1530 Fax: (305)871-1531 e-mail: tilteco@aol.com CA-0006719 WALTER A. TILLIT Jr. P.E. FLORIDA Lic. # 44167 | COMMERCIAL PASS-THRU HORIZONTAL SLIDING WINDOWS LARGE MISSILE IMPACT RESISTANT <p style="text-align: center;">QUIKSERV CORP.</p> 11441 BRITTMORE PARK DRIVE, HOUSTON, TEXAS 77041 PHONE: (713) 937-3437 FAX: (713) 937-9785 | DRAWN BY M.P. 01/19/2021 DATE <p style="text-align: center;">21-029</p> DRAWING No SHEET 9 OF 14 | | | | | | | | | | | | | | | | | | |
|---|--|--|--|-------------|------|---------|-------------|------|---|------------|----------|---|--|--|---|--|--|---|--|--|--|
| | | <table border="1" style="width: 100%; border-collapse: collapse;"> <thead> <tr> <th>REV. No</th> <th>DESCRIPTION</th> <th>DATE</th> <th>REV. No</th> <th>DESCRIPTION</th> <th>DATE</th> </tr> </thead> <tbody> <tr> <td>1</td> <td>OLD 17-080</td> <td>01/19/21</td> <td>3</td> <td></td> <td></td> </tr> <tr> <td>2</td> <td></td> <td></td> <td>4</td> <td></td> <td></td> </tr> </tbody> </table> | REV. No | DESCRIPTION | DATE | REV. No | DESCRIPTION | DATE | 1 | OLD 17-080 | 01/19/21 | 3 | | | 2 | | | 4 | | | |
| REV. No | DESCRIPTION | DATE | REV. No | DESCRIPTION | DATE | | | | | | | | | | | | | | | | |
| 1 | OLD 17-080 | 01/19/21 | 3 | | | | | | | | | | | | | | | | | | |
| 2 | | | 4 | | | | | | | | | | | | | | | | | | |



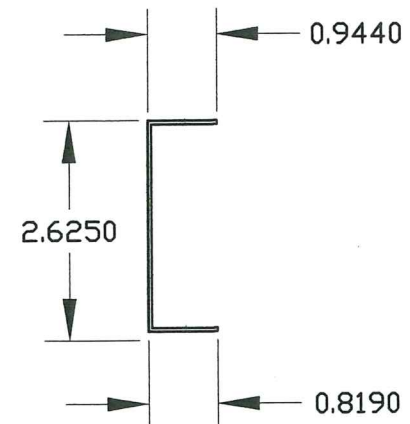
20 FRAMING PLATE
14 ga. ASTM A-653, CQ-GRADE 40
G-90 GALVANIZED STEEL
QUIKSERV RM# 3757



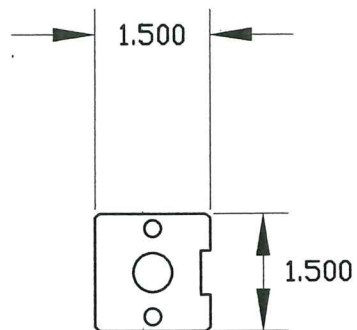
25 BASE BRACE
14 ga. ASTM A-653, CQ-GRADE 40
G-90 GALVANIZED STEEL
QUIKSERV RM# 3767



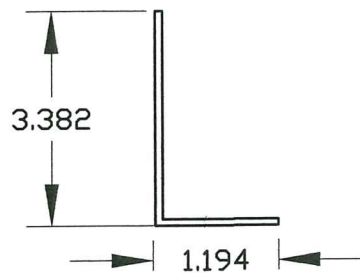
26 BASE
20 ga. 304 Stainless Steel
QUIKSERV RM# 3768



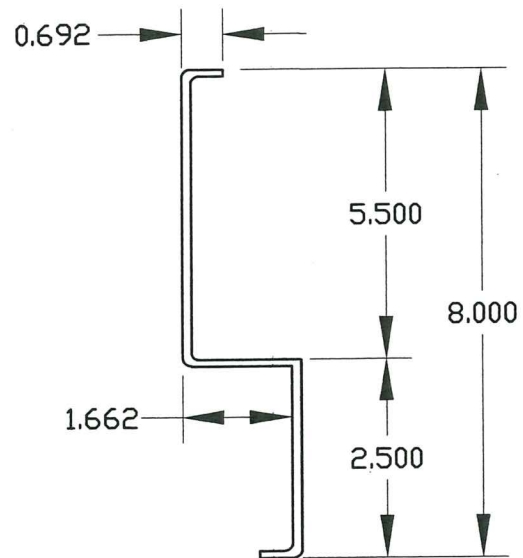
57 ACCESS COVER BRACKET
18 ga. ASTM A-653, CQ-GRADE 40
G-90 GALVANIZED STEEL



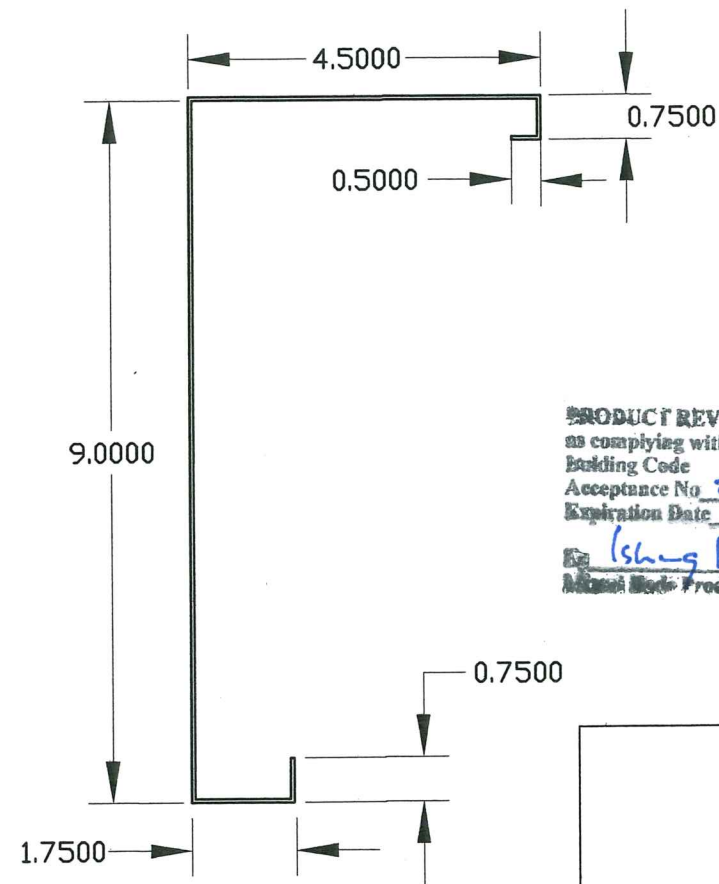
36 FRAMING PLATE
14 ga. ASTM A-653, CQ-GRADE 40
G-90 GALVANIZED STEEL
QUIKSERV RM# 3668



42 DOOR BRACKET
12 ga. ASTM A-653, CQ-GRADE 40
G-90 GALVANIZED STEEL
SIZE VARIES



43 HEADER BRACE
14 ga. ASTM A-653, CQ-GRADE 40
G-90 Galvanized Steel



58 EXTERIOR HEADER COVER
18 ga. 304 Stainless Steel

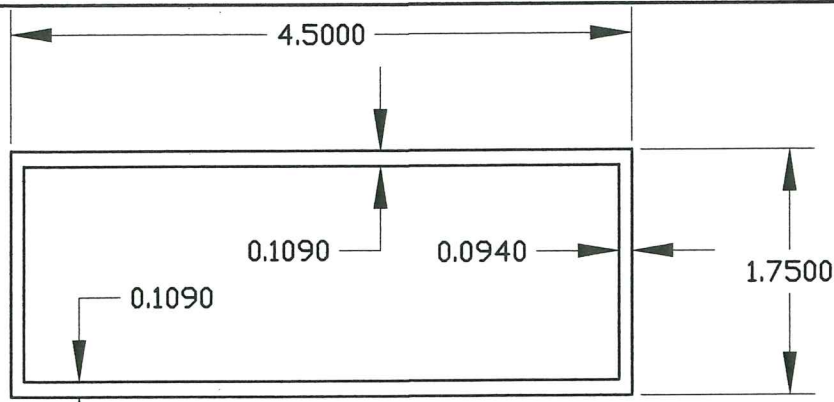
PRODUCT REVIEWED
as complying with the Florida
Building Code
Acceptance No. 21-0205-09
Expiration Date 3/25/24
By Isang I. Um...
Miami Code Product Control

MIAMI DADE COUNTY

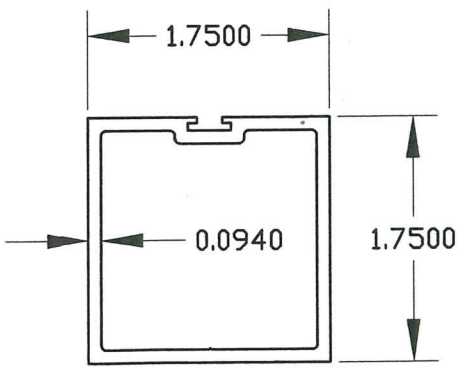
STEEL ASSEMBLY COMPONENTS

FLORIDA BUILDING CODE (HIGH VELOCITY HURRICANE ZONE)

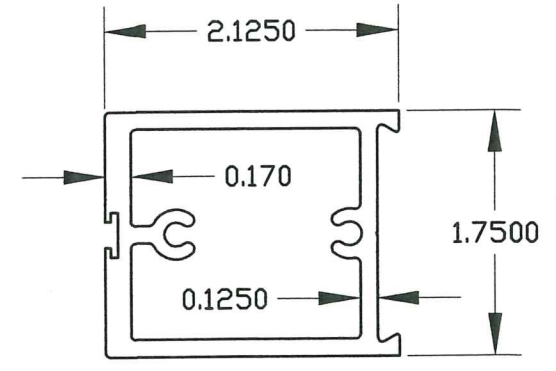
| | | <p>© 2021 TILTECO INC.</p> <p>TILTECO INC.</p> <p>TILTECO TESTING & ENGINEERING COMPANY 6355 N.W. 36th St., Ste. 305, VIRGINIA GARDENS, FL 33166 Phone: (305)871-1530 Fax: (305)871-1531 e-mail: tilteco@aol.com CA-0006719 WALTER A. TILLIT Jr. P.E. FLORIDA Lic. # 44167</p> | | <p>COMMERCIAL PASS-THRU HORIZONTAL SLIDING WINDOWS LARGE MISSILE IMPACT RESISTANT</p> <p>QUIKSERV CORP. 11441 BRITTMORE PARK DRIVE, HOUSTON, TEXAS 77041 PHONE: (713) 937-3437 FAX: (713) 937-9765</p> | | <p>DRAWN BY M.P.</p> <p>01/19/2021 DATE</p> <p>21-029 DRAWING No</p> | | | | | | | | | | | | | | | | | |
|---------------------------------|-------------|--|---------|---|-------------|---|---------|-------------|------|---|------------|----------|---|--|--|---|--|--|---|--|--|-----------------------|--|
| <p>P.E. SEAL/SIGNATURE/DATE</p> | | <table border="1"> <thead> <tr> <th>REV. No</th> <th>DESCRIPTION</th> <th>DATE</th> <th>REV. No</th> <th>DESCRIPTION</th> <th>DATE</th> </tr> </thead> <tbody> <tr> <td>1</td> <td>OLD 17-080</td> <td>01/19/21</td> <td>3</td> <td></td> <td></td> </tr> <tr> <td>2</td> <td></td> <td></td> <td>4</td> <td></td> <td></td> </tr> </tbody> </table> | | REV. No | DESCRIPTION | DATE | REV. No | DESCRIPTION | DATE | 1 | OLD 17-080 | 01/19/21 | 3 | | | 2 | | | 4 | | | <p>SHEET 10 OF 14</p> | |
| REV. No | DESCRIPTION | DATE | REV. No | DESCRIPTION | DATE | | | | | | | | | | | | | | | | | | |
| 1 | OLD 17-080 | 01/19/21 | 3 | | | | | | | | | | | | | | | | | | | | |
| 2 | | | 4 | | | | | | | | | | | | | | | | | | | | |



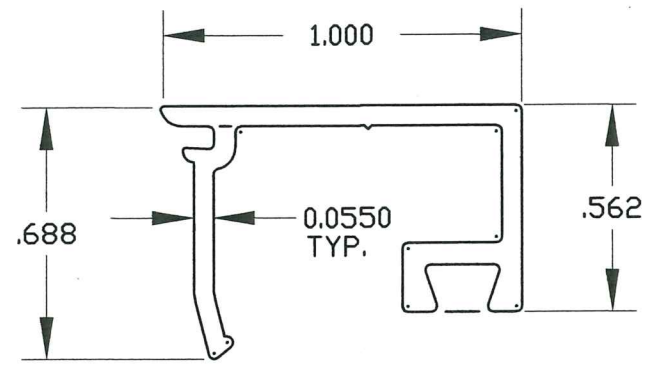
01 1-3/4" X 4-1/2" RECT. TUBE
QUIKSERV RM# 6026



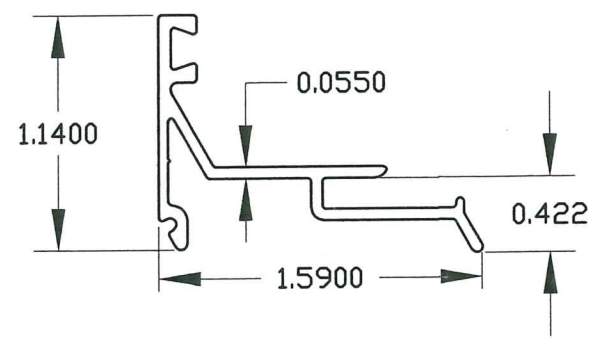
21 1-3/4" SQ. TUBE
QUIKSERV RM# 6049



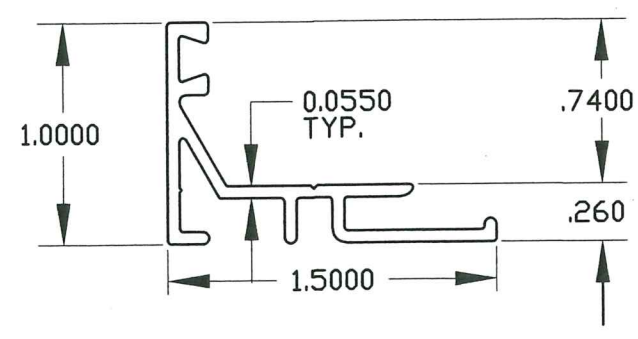
22 WIDE DOOR EXTRUSION
QUIKSERV RM# 6078



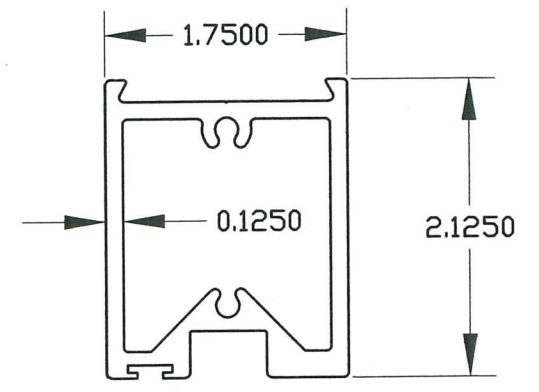
23 SASH FACE
QUIKSERV RM# 6061



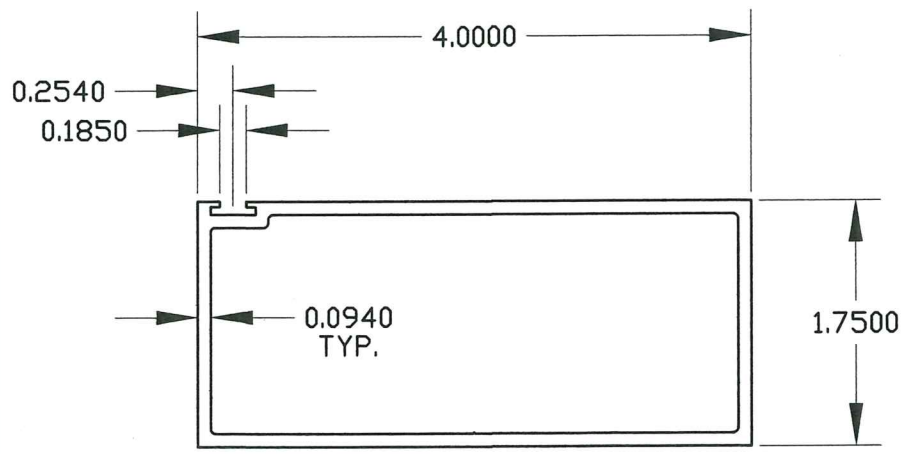
24 SNAP-ON SASH
QUIKSERV RM# 6065



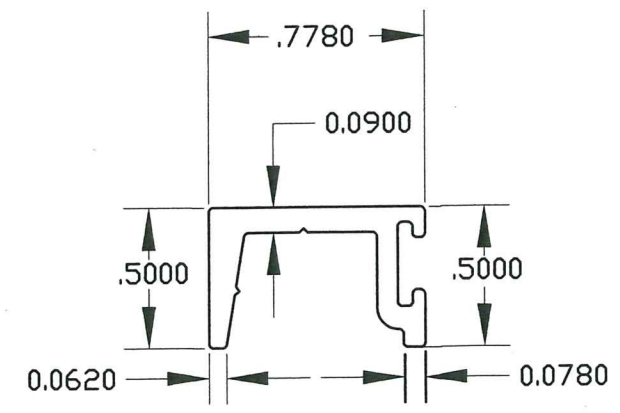
35 SCREW APPLIED SASH
QUIKSERV RM# 6082



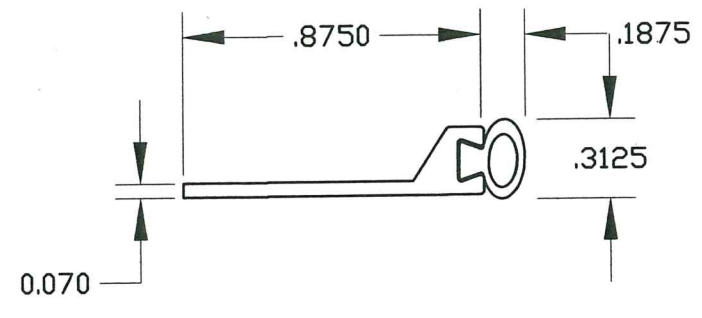
39 WIDE DOOR EXTRUSION W/ SLOT
QUIKSERV RM# 6080



40 1-3/4" X 4" RECT. TUBE
QUIKSERV RM# 6047



41 SCREW APPLIED STOP
QUIKSERV RM# 6084



53 161 NA PERIMETER SEAL
.07 ALUMINUM WITH NEOPRENE

PRODUCT REVISED
as complying with the Florida
Building Code
Acceptance No. 21-0205-09
Expiration Date 3/27/24
By: [Signature]
Miami Dade Product Control

MIAMI DADE COUNTY

ALUMINUM EXTRUSIONS COMPONENTS

WALTER A. TILLIT JR.
LICENSE
No. 44167
STATE OF FLORIDA
PROFESSIONAL ENGINEER
P.E. SEAL/SIGNATURE/DATE

© 2021 TILTECO INC.
TILTECO INC.
TILTECO TESTING & ENGINEERING COMPANY
5355 N.W. 36th St., Ste. 305, VIRGINIA GARDENS, FL 33186
Phone: (305)871-1530 Fax: (305)871-1531
e-mail: tilteco@aol.com
CA-0006719
WALTER A. TILLIT Jr. P.E.
FLORIDA Lic. # 44167

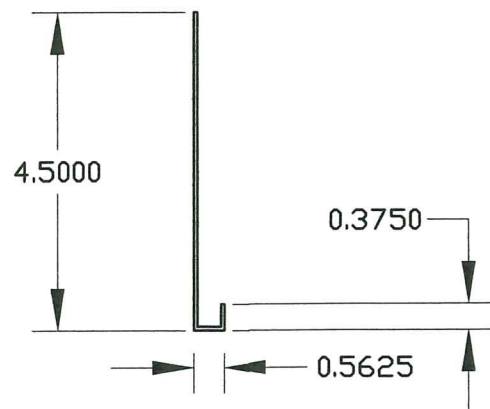
FLORIDA BUILDING CODE (HIGH VELOCITY HURRICANE ZONE)

COMMERCIAL PASS-THRU HORIZONTAL SLIDING
WINDOWS LARGE MISSILE IMPACT RESISTANT

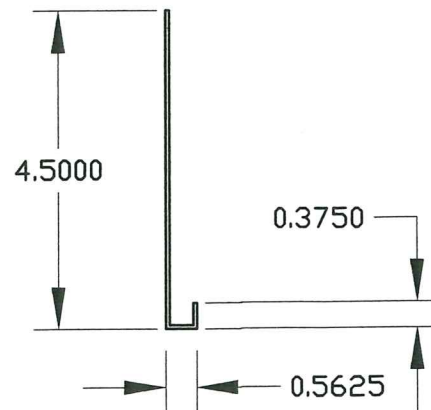
QUIKSERV CORP.
11441 BRITTMORE PARK DRIVE,
HOUSTON, TEXAS 77041
PHONE: (713) 937-3437 FAX: (713) 937-9765

| REV. No | DESCRIPTION | DATE | REV. No | DESCRIPTION | DATE |
|---------|-------------|----------|---------|-------------|------|
| 1 | OLD 17-080 | 01/19/21 | 3 | | |
| 2 | | | 4 | | |

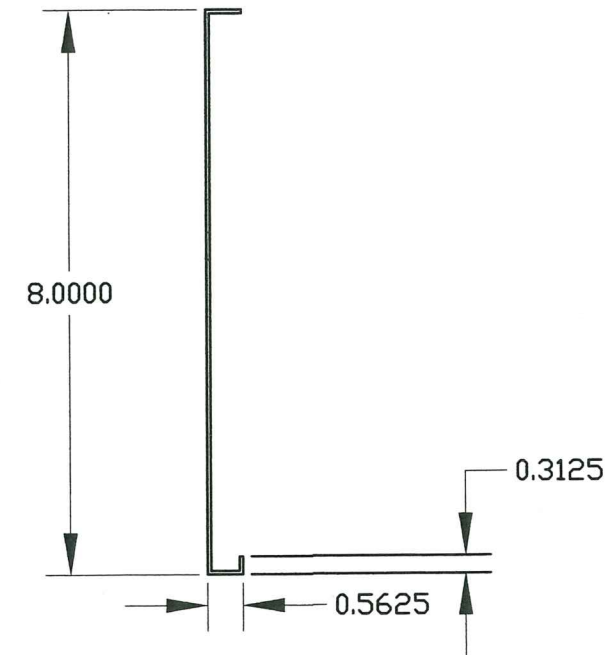
DRAWN BY
M.P.
01/19/2021
DATE
21-029
DRAWING No
SHEET 11 OF 14



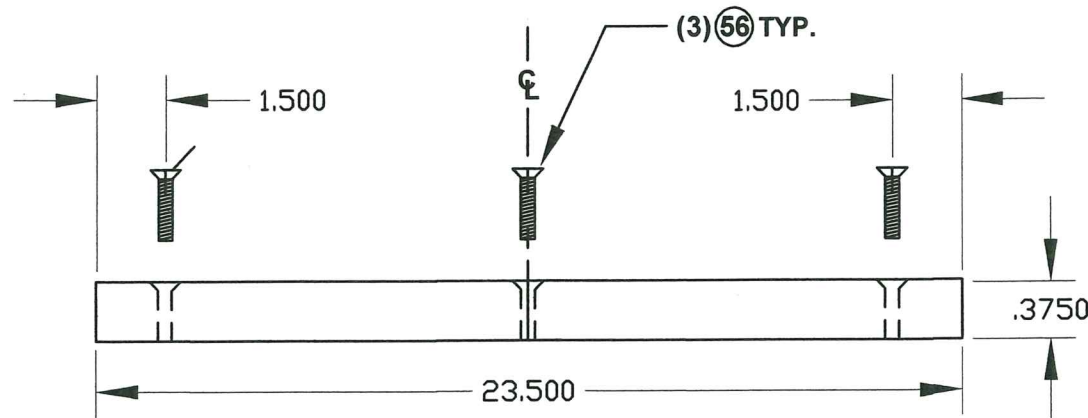
50 ACCESS COVER
18 ga. 304 Stainless Steel
SC-4030-IP
QUIKSERV RM# 3606



52 ACCESS COVER
18 ga. 304 Stainless Steel
SC-3030-IP
QUIKSERV RM# 3566

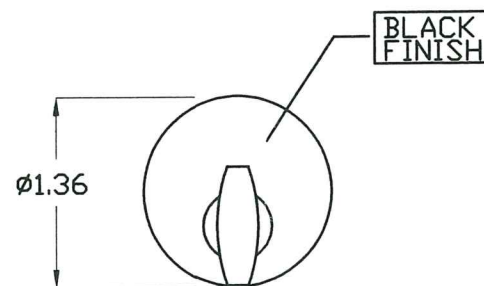


51 ACCESS COVER
18 ga. 304 Stainless Steel
SS-4035-E-IP
QUIKSERV RM# 3514

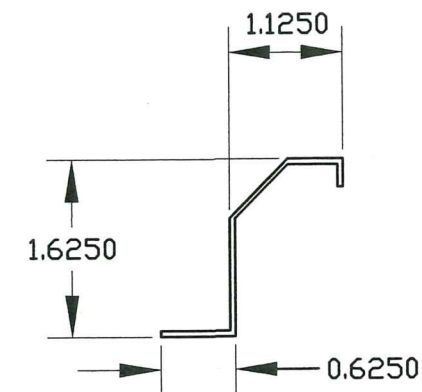


54 DOOR GUIDE BLOCK
HIGH DENSITY POLYETHYLENE
23-1/2" (L) X 3/8" (H) X 1/2" (W)
SPECIFIC GRAVITY=0.96-0.97
(PER SAFETY DATA SHEET)

MANUFACTURED BY QUADRANT EPP-USA INC,
700 NORTH SOUTH ROAD,
SCRANTON, PA 18501



48 THUMB TURN HOOKLOCK
QUIKSERV PART # 2022



49 DOOR HANDLE
16 ga. 304 Stainless Steel
QUIKSERV RM# 3588

PRODUCT REVIEW
as complying with the Florida
Building Code
Acceptance No. 21-0205-04
Expiration Date 3/25/24
By: [Signature]
Miami Made Product Control

MIAMI DADE COUNTY

ASSEMBLY COMPONENTS

FLORIDA BUILDING CODE (HIGH VELOCITY HURRICANE ZONE)

© 2021 TILTECO INC.

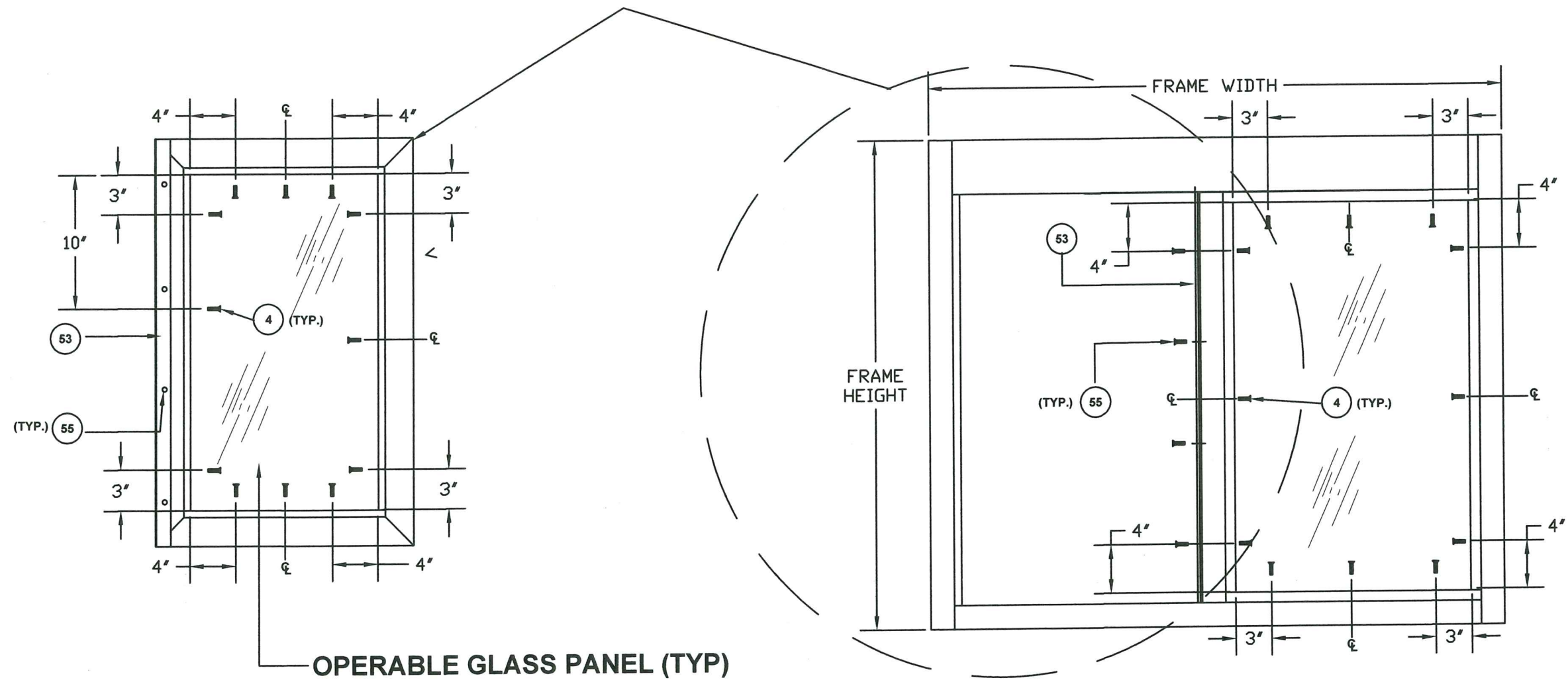
TILTECO INC.

TILLIT TESTING & ENGINEERING COMPANY
6355 N.W. 56th St., Ste. 305, VIRGINIA GARDENS, FL 33166
Phone: (305)871-1530 Fax: (305)871-1531
e-mail: tilteco@aol.com
CA-0006719
WALTER A. TILLIT Jr. P.E.
FLORIDA Lic. # 44167

WALTER A. TILLIT JR.
LICENSE
No. 44167
STATE OF FLORIDA
PROFESSIONAL ENGINEER

1/24/2021
P.E. SEAL/SIGNATURE/DATE

| | | | | | | |
|--|-------------|----------|---------|-------------|------|-----------------------------|
| COMMERCIAL PASS-THRU HORIZONTAL SLIDING WINDOWS LARGE MISSILE IMPACT RESISTANT | | | | | | DRAWN BY M.P |
| QUIKSERV CORP. | | | | | | 01/19/2021 DATE |
| 11441 BRITTMORE PARK DRIVE, HOUSTON, TEXAS 77041 PHONE: (713) 937-3437 FAX: (713) 937-9765 | | | | | | 21-029 DRAWING No |
| REV. No | DESCRIPTION | DATE | REV. No | DESCRIPTION | DATE | SHEET 12 OF 14 |
| 1 | OLD 17-080 | 01/19/21 | 3 | | | |
| 2 | | | 4 | | | |



PRODUCT REVIEWED
 as complying with the Florida
 Building Code
 Acceptance No 21-0205.09
 Expiration Date 3/25/24
 By: *[Signature]*
 Address: *[Signature]* Product Control

SASH INSTALLATION DETAILS

MIAMI DADE COUNTY

APPLICABLE TO THE FOLLOWING WINDOWS:
 SS-4035E-IP (TYPE 1 WINDOW)
 SC-4030-IP (TYPE 2 WINDOW)
 SC-3030-IP (TYPE 3 WINDOW)

WALTER A. TILLIT JR.
 LICENSE
 No. 44167
 STATE OF FLORIDA
 PROFESSIONAL ENGINEER

© 2021 TILTECO INC.
TILTECO INC.
 TILTECO TESTING & ENGINEERING COMPANY
 6358 NW 26th St., Ste. 305, VIRGINIA GARDENS, FL 33166
 Phone: (305)871-1530 Fax: (305)871-1531
 e-mail: tilteco@aol.com
 CA-0006719
 WALTER A. TILLIT Jr. P.E.
 FLORIDA Lic. # 44167

FLORIDA BUILDING CODE (HIGH VELOCITY HURRICANE ZONE)

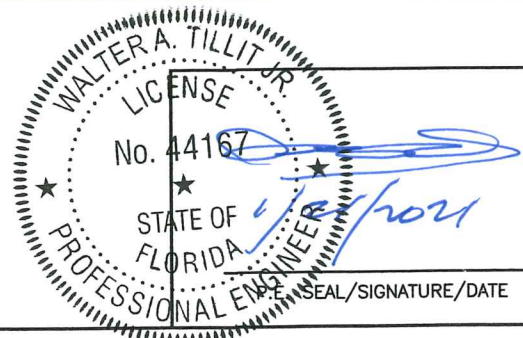
| COMMERCIAL PASS-THRU HORIZONTAL SLIDING WINDOWS LARGE MISSILE IMPACT RESISTANT | | | DRAWN BY M.P. | | |
|--|-------------|----------|-------------------|-------------|------|
| QUIKSERV CORP. | | | 01/19/2021 DATE | | |
| 11441 BRITTMORE PARK DRIVE, HOUSTON, TEXAS 77041 | | | 21-029 DRAWING No | | |
| PHONE: (713) 937-3437 FAX: (713) 937-9765 | | | SHEET 13 OF 14 | | |
| REV. No | DESCRIPTION | DATE | REV. No | DESCRIPTION | DATE |
| 1 | OLD 17-080 | 01/19/21 | 3 | | |
| 2 | | | 4 | | |

BILL OF MATERIALS

| Ref # | Description | Quikserv # | Material | Specs |
|-------|------------------------------|------------|---|-------------------------------------|
| 1 | 1 3/4" x 4 1/2" Rect. Tube | 6026 | 6063-T6 Aluminum | See drawing pg. 11 - length varies |
| 4 | Sheet Metal Screw | 5055 | 304 Series Stainless Steel | See drawing pg. 13 -#10-32 x 1 1/2" |
| 5 | Insulated Laminated Glass | n/a | 0.090" Interlayer by Eastman Chemical Company | See drawing pg. 6 |
| 7 | All Thread Rod | n/a | Grade 2 Carbon Steel, Zinc Plated | size varies |
| 19 | Hex Nut | 5301 | Zinc Plated | 5/16"-18 |
| 20 | Framing Plate | 3757 | 14 ga.ASTM A-653, CQ Grade 40, G-90 Galvanized Steel | See drawing pg. 10 |
| 21 | 1 3/4" Sq. Tube | 6049 | 6063-T6 Aluminum | See drawing pg. 11 - length varies |
| 22 | Wide Door Extrusion | 6078 | 6063-T6 Aluminum | See drawing pg. 11 - length varies |
| 23 | Sash Face | 6061 | 6063-T6 Aluminum | See drawing pg. 11 - length varies |
| 24 | Snap-on Sash | 6065 | 6063-T6 Aluminum | See drawing pg. 11 - length varies |
| 25 | Base Brace | 3767 | 14 ga.ASTM A-653, CQ Grade 40, G-90 Galvanized Steel | See drawing pg. 10 |
| 26 | Base | 3768 | 20 ga. 304 Series Stainless Steel | See drawing pg. 10 |
| 27 | Nutzert | 5318 | Grade 2 Carbon Steel, Zinc Plated | 5/16"-18 x 1" |
| 28 | Hex Bolt | 5205 | Grade 2 Carbon Steel, Zinc Plated | 5/16"-18 x 1" |
| 29 | Slide Rail | 1917 | Cold Rolled Steel | n/a |
| 30 | Weatherstripping | 6034 | n/a | n/a |
| 33 | Glazing Vinyl | 6032 | n/a | n/a |
| 34 | Silicone | 2100 | n/a | Mfg. by Novaguard |
| 35 | Screw Applied Sash | 6082 | 6063-T6 Aluminum | See drawing pg. 11 - length varies |
| 36 | Framing Plate | 3668 | 14 ga.ASTM A-653, CQ Grade 40, G-90 Galvanized Steel | See drawing pg. 10 |
| 39 | Wide Door Extrusion w/ Slot | 6080 | 6063-T6 Aluminum | See drawing pg. 11 - length varies |
| 40 | 1 3/4" x 4" Rect. Tube | 6047 | 6063-T6 Aluminum | See drawing pg. 11 - length varies |
| 41 | Screw Applied Stop | 6084 | 6063-T6 Aluminum | See drawing pg. 11 - length varies |
| 42 | Door Bracket | n/a | 12 ga.ASTM A-653, CQ Grade 40 G-90 Galvanized Steel | See drawing pg. 10 - size varies |
| 43 | Header Brace | n/a | 14 ga.ASTM A-653, CQ Grade 40, G-90 Galvanized Steel | See drawing pg. 10 |
| 44 | Trim Head Hex Machine Screw | 5008 | Grade 2 Carbon Steel, Zinc Plated | #10-32 x 3/8" |
| 45 | Trim Head Hex Machine Screw | 5005 | Grade 2 Carbon Steel, Zinc Plated | #10-32 x 3/4" |
| 48 | Thumb Turn Lock | 2022 | Grade 2 Carbon Steel, Zinc Plated | See drawing pg. 12 |
| 49 | Door Handle | 3588 | 16 ga. 304 Series Stainless Steel | See drawing pg. 12 |
| 50 | Access Cover for SC-4030-IP | 3606 | 18 ga. 304 Series Stainless Steel | See drawing pg. 12 |
| 51 | Access Cover for SS-4035E-IP | 3514 | 18 ga. 304 Series Stainless Steel | See drawing pg. 12 |
| 52 | Access Cover for SC-3030-IP | 3566 | 18 ga. 304 Series Stainless Steel | See drawing pg. 12 |
| 53 | 161 NA Perimeter Seal | n/a | 0.07 Aluminum with Neoprene | See drawing pg. 11 - length varies |
| 54 | Door guide Block | n/a | High Density Polyethylene 23 1/2" (L)x3/8" (H)x1/2" (W) | See drawing pg. 12 |
| 55 | Phil Pan Tek Screw | n/a | 410 Series Stainless Steel | #8 x 1 1/2" |
| 56 | Phil Flat Undercut Screw | 5052 | 304 Series Stainless Steel | (3) #10-32 x1" @ (54) |
| 57 | Access Cover Bracket | n/a | 18 ga. ASTM A-653, CQ Grade 40, G-90 Galvanized Steel | See drawing pg. 10 |
| 58 | Exterior Header Cover | n/a | 18 ga. 304 Series Stainless Steel | See drawing pg. 10 |
| 59 | Flat washer | 5402 | Grade 2 Carbon Steel, Zinc Plated | 5/16" diameter x 0.100" Thick |
| 60 | Lock washer | 5403 | Grade 2 Carbon Steel, Zinc Plated | 5/16" diameter x 0.083" Thick |
| 61 | Tek screw | 5017 | Grade 2 Carbon Steel, Zinc Plated | #8 x 1/2" |
| 62 | All Thread Rod | 2130 | Grade 2 Carbon Steel, Zinc Plated | 5/16"-18 x 34 1/2" |
| 63 | All Thread Rod | 2105 | Grade 2 Carbon Steel, Zinc Plated | 5/16"-18 x 46 1/2" |

PRODUCT REVISED
 as complying with the Florida
 Building Code
 Acceptance No 21-0205-09
 Expiration Date 12/22/24
 E. [Signature]
 Miami Dade Product Control

MIAMI DADE COUNTY



© 2021 TILTECO INC.
TILTECO INC.
 TILLIT TESTING & ENGINEERING COMPANY
 6355 N.W. 36th. St., Ste. 305, VIRGINIA GARDENS, FL 33166
 Phone : (305)871-1530 . Fax : (305)871-1531
 e-mail: tilteco@aol.com
 CA-0006719
 WALTER A. TILLIT Jr. P.E.
 FLORIDA Lic. # 44167

FLORIDA BUILDING CODE (HIGH VELOCITY HURRICANE ZONE)

| | | | |
|---|-------------|-----------------------------|---------|
| COMMERCIAL PASS-THRU HORIZONTAL SLIDING WINDOWS LARGE MISSILE IMPACT RESISTANT | | DRAWN BY M.P | |
| QUIKSERV CORP. 11441 BRITTMORE PARK DRIVE, HOUSTON, TEXAS 77041 PHONE: (713) 937-3437 FAX: (713) 937-9785 | | 01/19/2021 DATE | |
| | | 21-029 DRAWING No | |
| REV. No | DESCRIPTION | DATE | REV. No |
| 1 | OLD 17-080 | 01/19/21 | 3 |
| 2 | | | 4 |

SHEET 14 OF 14