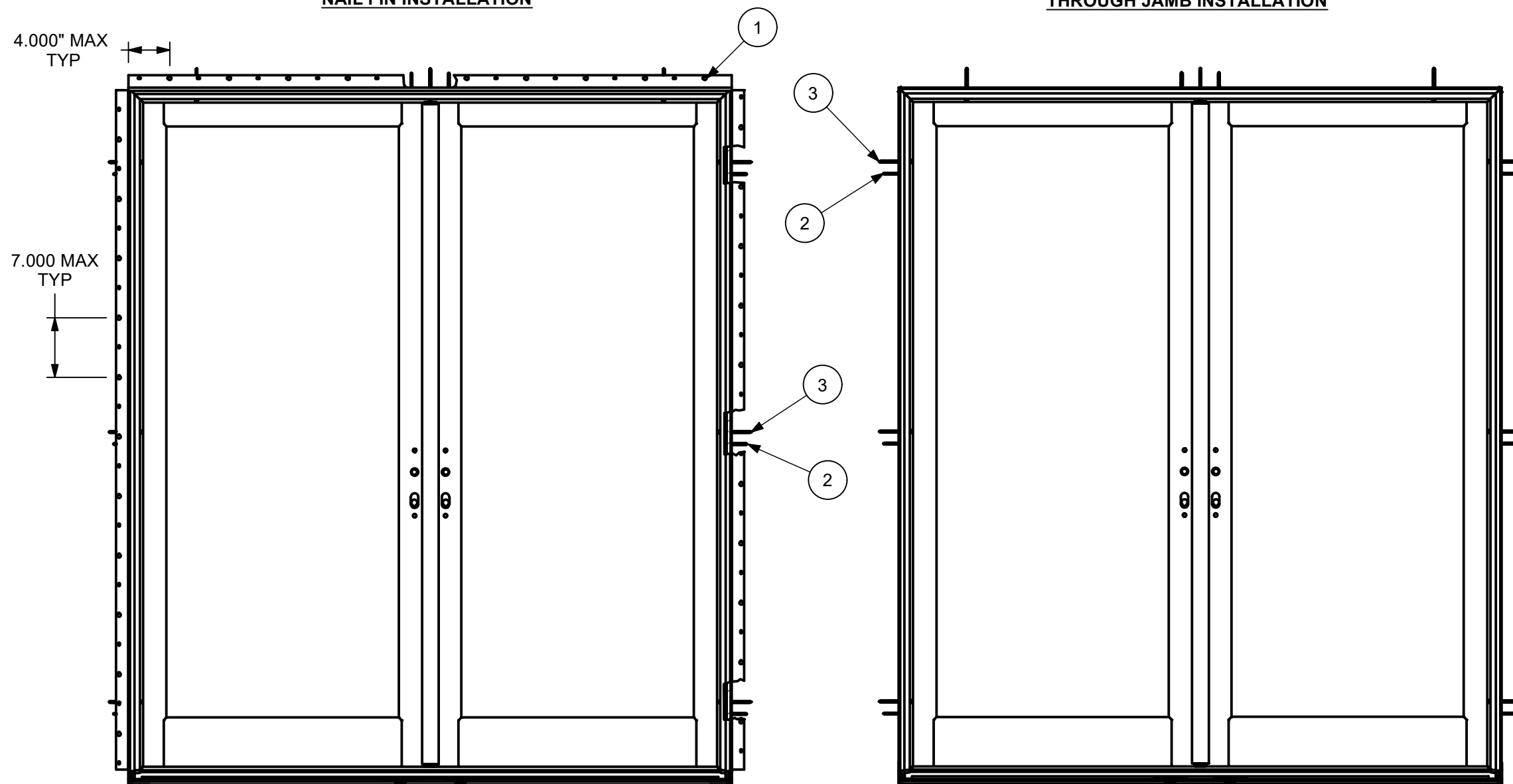


NAIL FIN INSTALLATION

THROUGH JAMB INSTALLATION



CATEGORY:
SWINGING FRENCH DOOR

UNIT TYPE:
ELIFD

NOTES:

1. FOR GENERAL SPECIFICATIONS, REFER TO DOC 00003952
2. CN 6068 XX ELIFD SHOWN
3. JAMB AND HEADER INSTALLATION HOLES ARE PRE-DRILLED
4. #8 X 3" SCREWS USED AT EACH THROUGH JAMB LOCATION
5. #8 X 2-1/2" SCREWS USED AT HINGE AND STRIKE LOCATIONS
6. FOR MAX SIZE AND PERFORMANCE, REFER TO DOC 00087000
7. FOR INSTALLATION DETAILS, REFER TO DOC 00100299
8. GLASS COMPLIES TO ASTM E1300

3	00003264	#8-18 X 3" TYPE AB, FULL THREAD
2	00003228	#8-15 X 2-1/2" TYPE A/TF, 2/3 THREAD
1	NA	2" GALVANIZED ROOFING NAIL
ITEM	DWG NO	DESCRIPTION
PARTS LIST		

MARVIN  **RESEARCH & DEVELOPMENT**

COLLECTION: ELEVATE

DWG TYPE: INSTALLATION
DESCRIPTION: INSTALLATION ELEVATIONS, NAIL FIN/THROUGH JAMB, FL10196

CHK: SAL	SIZE: B	CLASS: MISC	DWG NO: 00100250
APP: SRB	SCALE: 1 : 15	DATE: 04/21/16	DWG BY: BORKOWSKI, WILLIAM
			SHEET: 1 OF 1

3.0	UPDATED TAXONOMY OF BRANDS, AND ADDED NOTE 8	PEND	12/08/20	TDG
2.0	UPDATED ASSEMBLY (STRIKE PLATE)	23678	04/02/19	AAA
1.2	UPDATED MODEL (ADDED DRAIN ROUTES)	21875	07/05/18	ASL
1.1	UPDATED MODEL (SCREW, ASTRAGAL/MULL POST BASE TO PANEL, IIFD STD, CHANGED 1.750" SCREW LENGTH TO 1.000")	21875	07/21/17	RJN
1.0	UPDATED MODEL (HINGE S-WEDGE)	21875	06/21/17	GMB
0.0	ORIGINAL ISSUE	20058	04/22/16	WRB
REV	DESCRIPTION / REQUESTOR	ECN NO	DATE	REV BY

NOTICE - CONFIDENTIAL INFORMATION

The information in this document is privileged and strictly confidential. The information contained herein shall be used only by Marvin Windows and Doors employees and by those agents or suppliers granted official written permission. If the reader of this document is not the intended recipient, or the employee or agent of the intended recipient, please delete this document from all data storage devices, and destroy all hard copies. Any unauthorized dissemination, distribution, copying or other use of the information contained in this document is strictly prohibited.