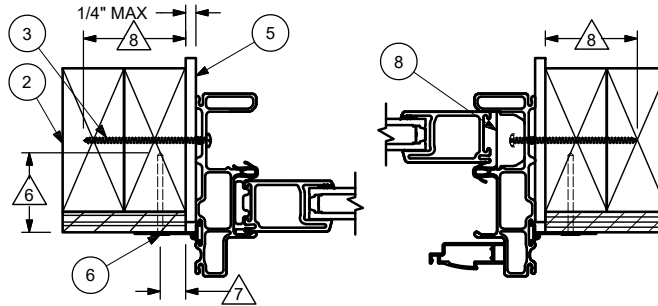


HEAD JAMB

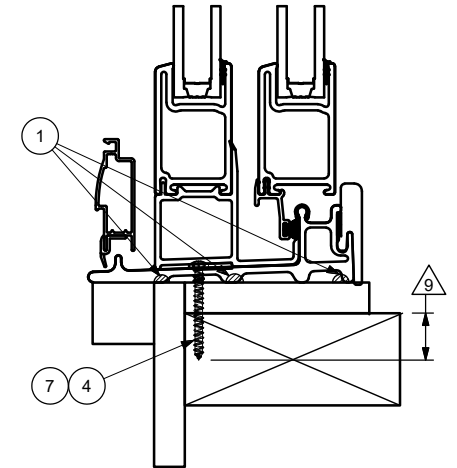


JAMB

HEAD JAMB AND JAMB INSTALLATION:

- SECURE THE NAIL FIN WITH 2" GALVANIZED ROOFING NAILS
- INSTALL A #8 X 3" PAN HEAD SCREW THRU EACH STATIONARY BRACKET AND THRU EACH INSTALLATION HOLE AND JAMB BLOCK

NAILING FIN INSTALLATION IS APPROVED FOR THE FOLLOWING PRODUCTS.
FL 10248 ESSPD



SILL

SCALE 1:2

NOTES:

1. FOR GENERAL SPECIFICATIONS, REFER TO DOC 00003952
2. THIS PRINT IS FOR STRUCTURAL PERFORMANCE ONLY. FOR FLASHING AND SEALING INSTRUCTIONS REFER TO THE INSTALLATION INSTRUCTIONS
3. SHIMS:

PLACE A SHIM 4"-6" FROM EACH CORNER AND AT EACH LOCATION WHERE A SCREW PASSES THROUGH THE JAMB/ HEAD JAMB AND INTO THE BUCK. ADDITIONAL SHIMS MUST BE PLACED A MAXIMUM OF 15" APART ON CENTER

4. IF CHEMICALLY TREATED LUMBER IS USED FOR BUCK MATERIAL, FASTENERS INTO THE BUCK MUST BE A MINIMUM OF 0.90 OZ/FT² ZINC HOT DIPPED GALVANIZED OR STAINLESS STEEL TYPE 304 OR 316

5. FOR PAGE 2 OF 2, REFER TO 00053754
6. MINIMUM NAIL EMBEDMENT DEPTH 1 15/16"
7. MINIMUM EDGE DISTANCE 1/2"
8. MINIMUM SCREW EDGE DISTANCE 2 3/16"
9. MINIMUM SCREW EDGE DISTANCE 3/4"

SILL INSTALLATION:

- PLACE 3 BEADS OF APA-AFG-01 SPECIFICATION ADHESIVE ON THE SILL PLATE: MINIMUM OF 3/8" DIAMETER BEADS MUST BE LARGE ENOUGH TO CONTACT THE SILL
- ANCHOR THE SILL BY INSTALLING A #8 X 1.500" PAN HEAD SCREW THRU EACH LEVELING BLOCK END CAP. IF INSTALLING THE UNIT DIRECTLY ON CONCRETE, USE 3/16" X 2.75" MASONRY SCREWS

8	00099414	JAMB BLOCK
7	NA	3/16" X 2.75" MASONRY SCREW
6	NA	2.000 GALV. ROOF NAIL
5	NA	SHIM
4	00003237	#8 X 1.500 PH, PH, AB THREAD
3	00003264	#8 X 3.000" PH, PH SCREW
2	NA	FRAMING MATERIAL
1	NA	STRUCTURAL ADHESIVE
ITEM	DWG NO	DESCRIPTION

PARTS LIST

MARVIN RESEARCH & DEVELOPMENT

COLLECTION: ESSENTIAL

DWG TYPE: INSTALLATION
DESCRIPTION: FL 10248, SLIDING PATIO DOOR

CHK:	CAM	SIZE:	CLASS:	DWG NO:	
	09/19/19	B	MISC	00053679	
APP:	JHS	SCALE:	DATE:	DWG BY:	SHEET:
	09/19/19	1:3	01/10/08	RUHLAND, BRADLEY	1 OF 2

12.1	UPDATED ASSEMBLY (LEVELING BLOCK PROFILE)	24116	09/17/19	JAJ
12.0	UPDATED TITLE BLOCK AND BRANDING INFO	24116	06/19/19	TDG
11.0	UPDATED JAMB INSTALLATION NOTES, JAMB BLOCKS	22599	02/07/18	BJA
10.0	UPDATED ASSEMBLY (STAT INTERLOCK)	21674	08/04/17	BJA
9.3	ADDED JAMB BLOCK, REMOVED STRUCTURAL BRACKET INSTALLATION	20436	10/12/16	RAJ
9.2	ADDED NOTES 7, 8, 9, 10, 11, AND CORRESPONDING DIMENSIONS	20436	04/30/15	MJR
REV	DESCRIPTION / REQUESTOR	ECN NO	DATE	REV BY

CATEGORY:
SLIDING PATIO DOOR

UNIT TYPE:
ESSPD

NOTICE - CONFIDENTIAL INFORMATION

The information in this document is privileged and strictly confidential. The information contained herein shall be used only by Marvin employees and by those agents or suppliers granted official written permission. If the reader of this document is not the intended recipient, or the employee or agent of the intended recipient, please delete this document from all data storage devices, and destroy all hard copies. Any unauthorized dissemination, distribution, copying or other use of the information contained in this document is strictly prohibited.