

CORRIM COMPANY, LLC

FIBERGLASS FIXED WINDOWS

IMPACT RESISTANCE (LARGE MISSILE IMPACT RESISTANT, MISSILE LEVEL D)
VALID FOR USE INSIDE AND OUTSIDE THE HVHZ (SEE LIMITATIONS HEREIN)

NON-SITE-SPECIFIC STRUCTURAL PERFORMANCE EVALUATION. A DESIGN PROFESSIONAL SHALL BE RESPONSIBLE FOR CERTIFYING THE APPLICATION OF THIS INFORMATION TO ANY SITE-SPECIFIC LOCATION.

ALLOWABLE DESIGN PRESSURES (ASD)

+70 PSF
-70 PSF

GENERAL NOTES

- THE SYSTEM DESCRIBED HEREIN HAS BEEN DESIGNED AND TESTED IN ACCORDANCE WITH THE FLORIDA BUILDING CODE EIGHTH EDITION (2023), FOR USE WITHIN AND OUTSIDE THE HIGH VELOCITY HURRICANE ZONE, PER ASTM E330, E283, E331, E1886, E1996, E1300, AND TAS 201, 202 AND 203 STANDARDS.
- WIND LOAD DURATION FACTOR $C_d=1.6$ HAS BEEN USED FOR WOOD ANCHOR DESIGN.
- POSITIVE AND NEGATIVE DESIGN PRESSURES CALCULATED FOR USE WITH THIS SYSTEM SHALL BE DETERMINED BY OTHERS ON A JOB-SPECIFIC BASIS IN ACCORDANCE WITH THE GOVERNING CODE.
- ALL ANCHORS SHALL BE SAE GRADE 5 MINIMUM, CADMIUM-PLATED OR OTHERWISE PROTECTED WITH CORROSION-RESISTANT MATERIAL UNLESS OTHERWISE NOTED. FASTENERS AND SHALL COMPLY WITH "SPECIFICATIONS FOR ALUMINUM STRUCTURES" SECTION J.3.7.2 BY THE ALUMINUM ASSOCIATION, INC., & ANY APPLICABLE FEDERAL, STATE, AND/OR LOCAL CODES.
- REFER TO FASTENER MANUFACTURER'S PUBLISHED DATA SHEETS AND RECOMMENDATIONS FOR FASTENER INSTALLATION INSTRUCTIONS.
- THE SYSTEM DETAILED HEREIN IS GENERIC AND DOES NOT PROVIDE INFORMATION FOR A SPECIFIC SITE. FOR SITE CONDITIONS DIFFERENT FROM THE CONDITIONS DETAILED HEREIN, A LICENSED ENGINEER OR REGISTERED ARCHITECT SHALL PREPARE SITE SPECIFIC DOCUMENTS FOR USE IN CONJUNCTION WITH THIS DOCUMENT.
- THE STRUCTURAL ADEQUACY OF THE EXISTING STRUCTURE TO WITHSTAND SUPERIMPOSED LOADS BY THIS SYSTEM SHALL BE VERIFIED BY OTHERS. THE ARCHITECT/ENGINEER OF RECORD FOR THE PROJECT SUPERSTRUCTURE WITH WHICH THIS DESIGN IS USED SHALL BE RESPONSIBLE FOR THE INTEGRITY OF ALL SUPPORTING SURFACES TO THIS DESIGN WHICH SHALL BE COORDINATED BY THE PERMITTING CONTRACTOR. WOOD BUNKS (BY OTHERS) SHALL BE ANCHORED PROPERLY TO TRANSFER LOADS TO THE EXISTING STRUCTURE.
- PRODUCTS SHOWN HEREIN ARE LARGE MISSILE IMPACT RESISTANT AND DO NOT REQUIRE IMPACT RESISTANT SHUTTERS.
- EXTERIOR SEAM OF FRAME CORNERS SHALL BE SEALED WITH SILICONE.
- PLASTIC COMPONENTS USED WITHIN THE HVHZ MUST MEET ALL APPLICABLE FIRE/SMOKE/UV PERFORMANCE REQUIREMENTS AS SET FORTH IN THE ABOVE-NOTED BUILDING CODE.
- THE CONTRACTOR IS RESPONSIBLE TO INSULATE ALL MEMBERS FROM DISSIMILAR MATERIALS TO PREVENT ELECTROLYSIS.
- ENGINEER SEAL AFFIXED HERETO VALIDATES STRUCTURAL DESIGN AS SHOWN ONLY. USE OF THIS SPECIFICATION BY CONTRACTOR, et. al. INDEMNIFIES & SAVES HARMLESS THIS ENGINEER FOR ALL COST & DAMAGES INCLUDING LEGAL FEES & APPELLATE FEES RESULTING FROM MATERIAL FABRICATION, SYSTEM ERECTION, & CONSTRUCTION PRACTICES BEYOND THAT WHICH IS CALLED FOR BY LOCAL, STATE, & FEDERAL CODES & FROM DEVIATIONS OF THIS PLAN.
- EXCEPT AS EXPRESSLY PROVIDED HEREIN, NO ADDITIONAL CERTIFICATIONS OR AFFIRMATIONS ARE INTENDED.
- PRESSURE VALUES ON THIS APPROVAL ARE (ASD) ALLOWABLE DESIGN PRESSURES.
- ALTERATIONS, ADDITIONS, HIGHLIGHTING, OR OTHER MARKINGS TO THIS DOCUMENT ARE NOT PERMITTED AND INVALIDATE THIS CERTIFICATION.

FRANK BENNARDO, P.E.
PE# 0046549 CA# 9885

OCTOBER 20, 2023

NOTE REGARDING USE OF THIS DOCUMENT & USE OUTSIDE FLORIDA:

NON-SITE-SPECIFIC STRUCTURAL PERFORMANCE EVALUATION. THIS PRODUCT EVALUATION IS VALID FOR USE IN **FLORIDA ONLY**. USE OF THIS EVALUATION REQUIRES A REVIEW & CERTIFICATION BY A LOCAL DESIGN PROFESSIONAL WHO SHALL BE RESPONSIBLE FOR THE PROPER ADAPTATION OF THIS GENERAL PERFORMANCE EVALUATION TO ANY SITE-SPECIFIC PROJECT. CONTACT THIS OFFICE AT **ENGINEERINGEXPRESS.COM/QUOTE** FOR ASSISTANCE WITH YOUR PROJECT-SPECIFIC NEEDS & FOR ADAPTATION & CERTIFICATION OF THIS DOCUMENT OUTSIDE OF FLORIDA.

FL 12574.1

ENGINEERING EXPRESS®
POSTAL ADDRESS:
2234 NORTH FEDERAL HWY #7664
BOCA RATON, FL 33431
ENGINEERINGEXPRESS.COM

PAGE INDEX:

SHEET INDEX

# SHEET	DESCRIPTION
1	COVER SHEET
2	TYPICAL ELEVATIONS
3	TYPICAL WINDOW FRAMES
4	TYPICAL GLAZING DETAILS, TYPICAL WINDOW MULLION & ANCHOR SCHEDULE
5	PARTS

TERMINOLOGY:

THE FOLLOWING ABBREVIATIONS APPEAR IN THIS APPROVAL:
"F.W." FOR "FRAME WIDTH", "F.H." FOR "FRAME HEIGHT",
"D.L.O." FOR "DAY LIGHT OPENING", "INC." FOR "INCORPORATION", "CORP." FOR "CORPORATION", "ALUM" FOR "ALUMINUM", "ASD" FOR "ALLOWABLE STRESS DESIGN", "ASTM" FOR "AMERICAN SOCIETY FOR TESTING AND MATERIALS", "CS" FOR "CARBON STEEL", "CONN" FOR "CONNECTION", "EMBED" FOR "EMBEDMENT", "DIST." FOR "DISTANCE", "GA" FOR "GAUGE", "HVHZ" FOR "HIGH-VELOCITY HURRICANE ZONE", "LB" FOR "POUND", "MAX" FOR "MAXIMUM", "N.T.S." FOR "NOT TO SCALE", "PSF" FOR "POUNDS PER SQUARE FOOT (lb/ft²)", "SPECS" FOR "SPECIFICATIONS", "&" FOR "AND", "MAX" FOR "MAXIMUM", "W/" FOR "WITH", "EXIST" FOR "EXISTING", "STRUCT" FOR "STRUCTURE", "CONC." FOR "CONCRETE". CONTACT ENGINEERING EXPRESS FOR ADDITIONAL ABBREVIATION/TERMINOLOGY CLARIFICATIONS.

VISIT ECALC.IO/62467

FOR SITE-SPECIFIC DEVIATIONS & MORE INFORMATION ABOUT THIS DOCUMENT OR SCAN THIS QR CODE

VISIT ENGINEERINGEXPRESS.COM/STORE FOR ADDITIONAL PLANS, REPORTS & RESOURCES



CORRIM COMPANY FRP, LLC
1870 STILLMAN DRIVE
OSHKOSH, WI 54901
(920) 231-2000

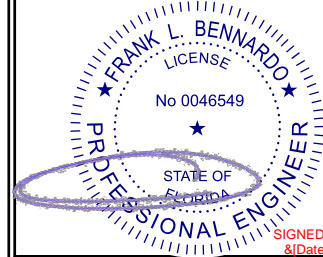
FIBERGLASS FIXED WINDOWS
FLORIDA BUILDING CODE EIGHTH EDITION (2023)
FLORIDA STATEWIDE APPROVAL (FSA FL#12574.1)

REMARKS	DATE	DRWN	CHKD
PREV. SUBMITTAL (20-28680)	07/07/20	CCB	RWV
2023 FBC UPDATE	10/16/23	MRT	RWV

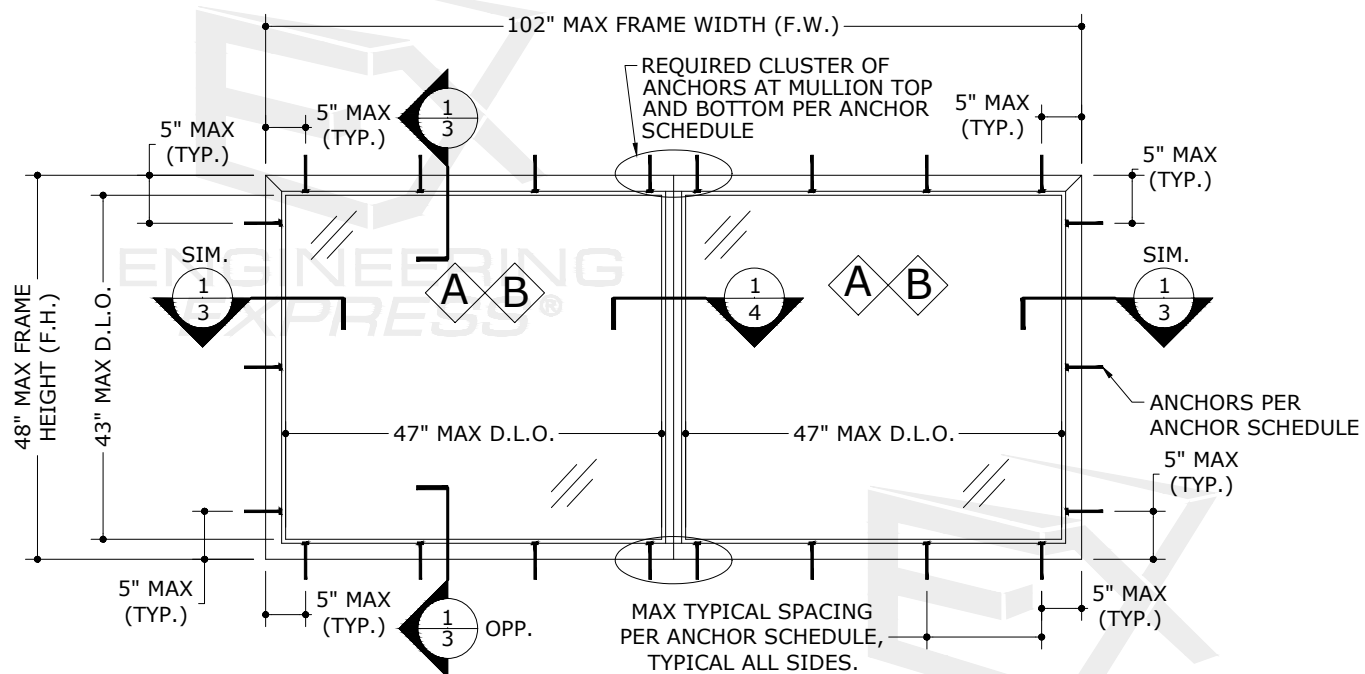
23-62467

SCALE: NTS UNLESS NOTED

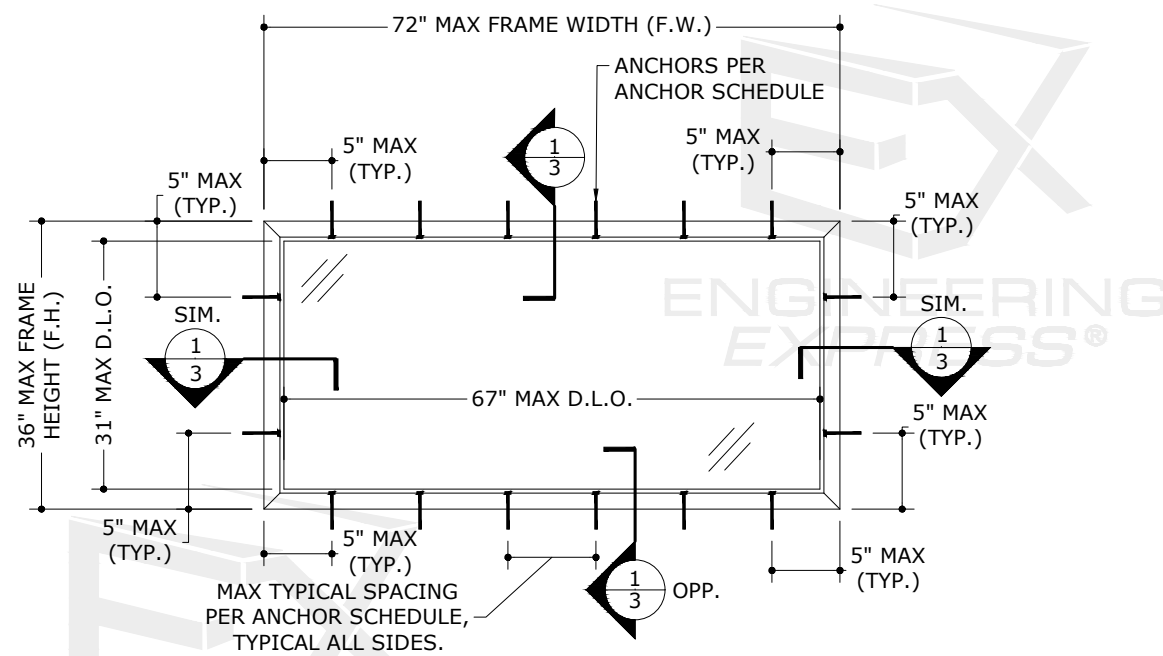
1 OF 5



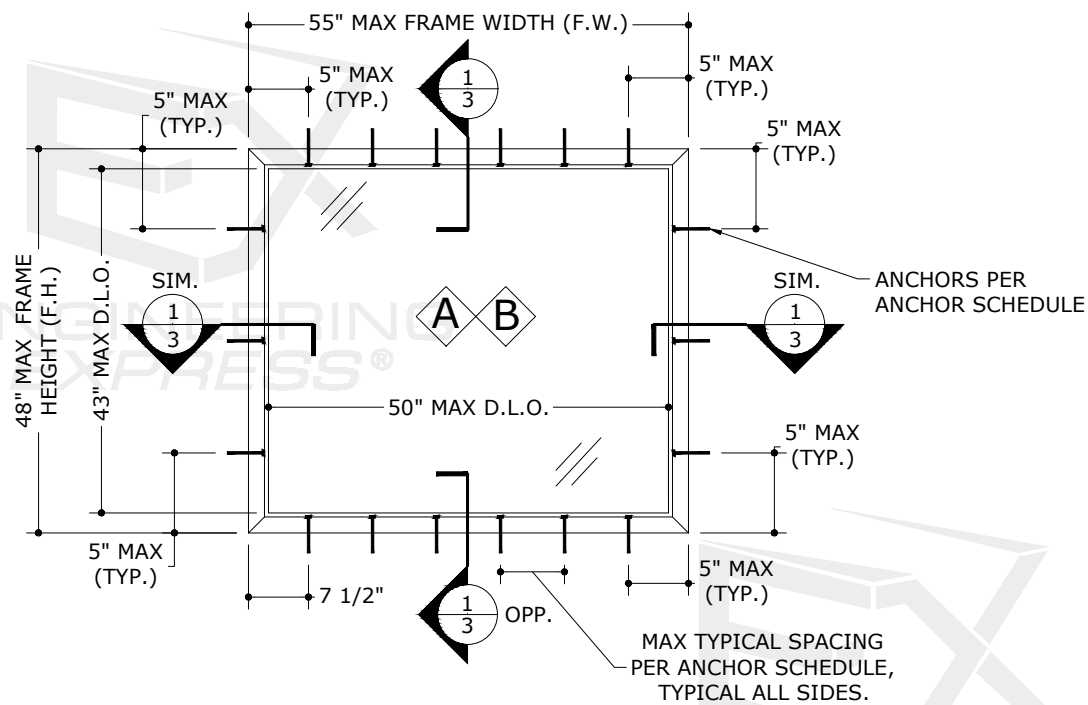
FL



1 TYPICAL ELEVATION
1/2" = 1'-0" EXTERIOR ELEV



2 TYPICAL ELEVATION
1/2" = 1'-0" EXTERIOR ELEV



3 TYPICAL ELEVATION
1/2" = 1'-0" EXTERIOR ELEV

FL 12574.1

ENGINEERING EXPRESS®
CORRIM COMPANY FRP, LLC
POSTAL ADDRESS:
2234 NORTH FEDERAL HWY #7664
BOCA RATON, FL 33431
ENGINEERINGEXPRESS.COM

1870 STILLMAN DRIVE
OSHKOSH, WI 54901
(920) 231-2000
FIBERGLASS FIXED WINDOWS
FLORIDA BUILDING CODE EIGHTH EDITION (2023)
FLORIDA STATEWIDE APPROVAL (FSA FL#12574.1)

REMARKS	DRWN	CHKD	DATE
PREV. SUBMITTAL (20-28680)	CCB	RWN	07/07/20
2023 FBC UPDATE	MRT	RWN	10/16/23

COPYRIGHT ENGINEERING EXPRESS®

23-62467

SCALE: NTS UNLESS NOTED

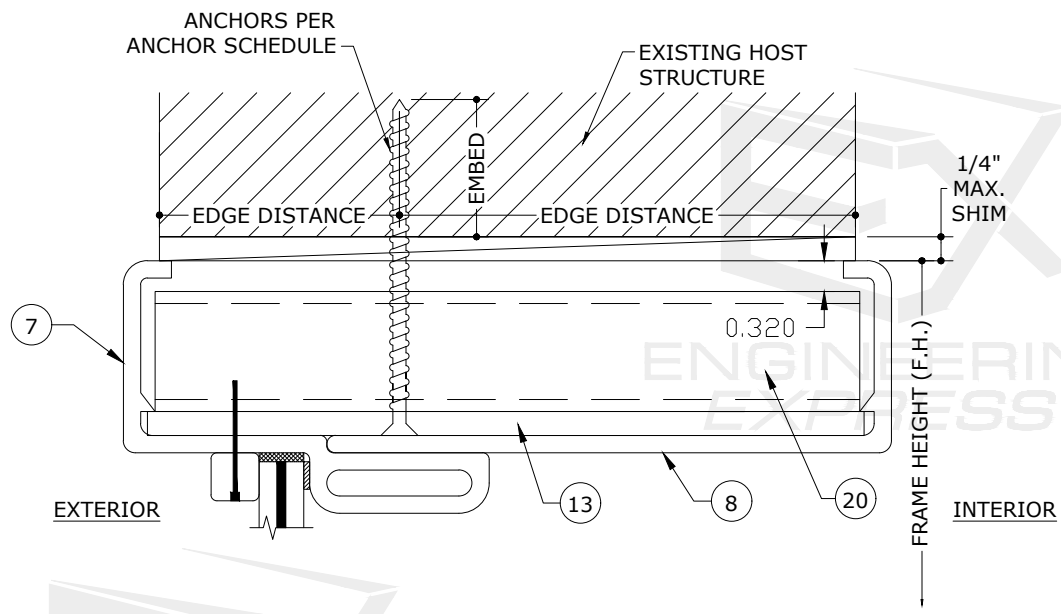
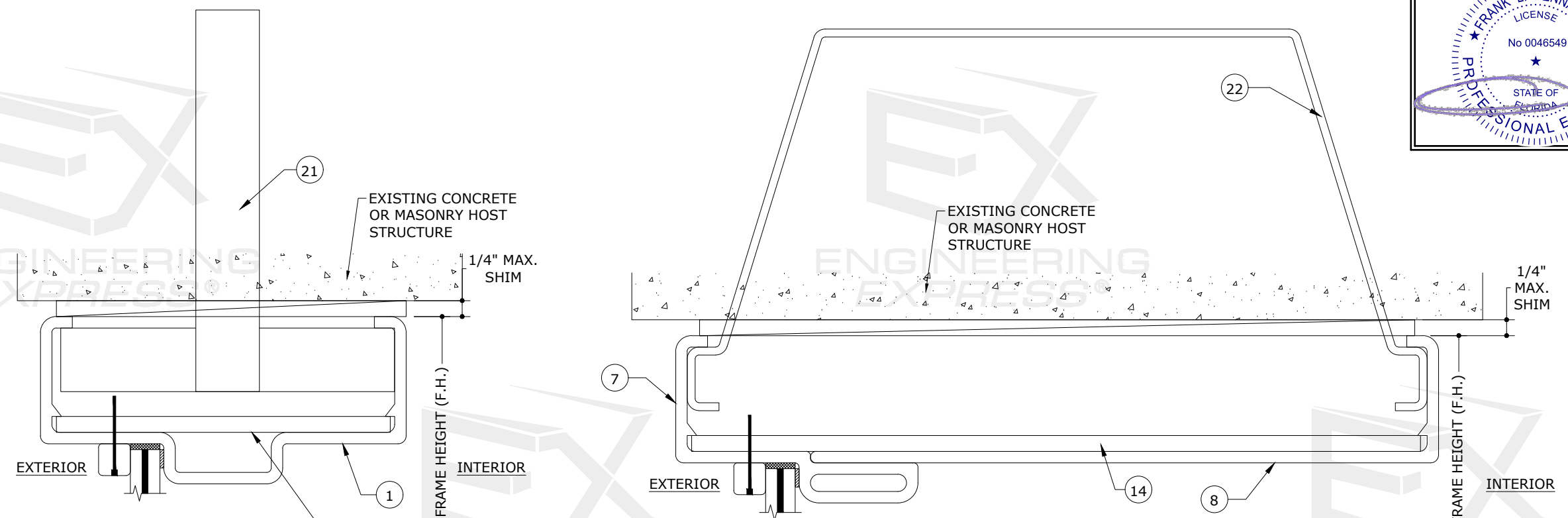
c:\users\rickn\engineering express\production - documents\projects\23-123-62467 2023 product fbc update fl12574\work\2023 fbc\drawings & cad\23-62467a - fl12574.1 - dwg.dwg

FRANK BENNARDO, P.E.
PE# 0046549 CA# 9885

OCTOBER 20, 2023

FL

SIGNED: &DateI



NOTE: ANCHOR TYPES AND FRAME TYPES MAY BE INTERCHANGED AS FIELD CONDITIONS DICTATE

FL 12574.1

ENGINEERING EXPRESS®

POSTAL ADDRESS:
2234 NORTH FEDERAL HWY #7664
BOCA RATON, FL 33431
ENGINEERINGEXPRESS.COM

CORRIM COMPANY FRP, LLC

1870 STILLMAN DRIVE
OSHKOSH, WI 54901
(920) 231-2000

FIBERGLASS FIXED WINDOWS
FLORIDA BUILDING CODE EIGHTH EDITION (2023)
FLORIDA STATEWIDE APPROVAL (FSA FL#12574.1)

REMARKS	DRWN	CHKD	DATE
PREV. SUBMITTAL (20-28680)	CCB	RWN	07/07/20
2023 FBC UPDATE	MRT	RWN	10/16/23

23-62467

SCALE: NTS UNLESS NOTED

1
3

TYPICAL WINDOW FRAMES

6" = 1'-0"

VERT SECTION

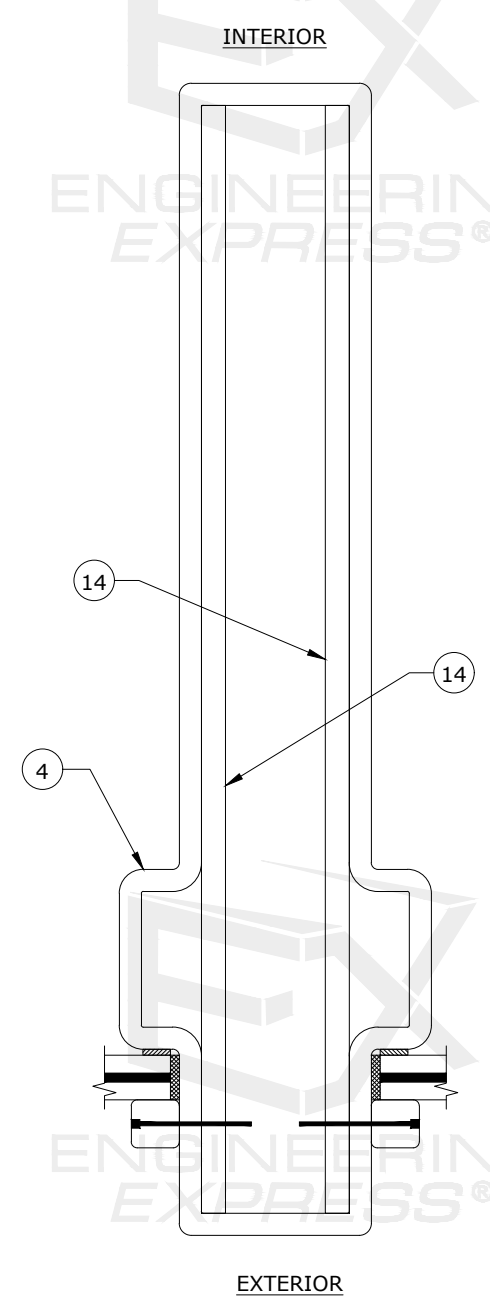
FRANK BENNARDO, P.E.
PE# 0046549 CA# 9885

OCTOBER 20, 2023

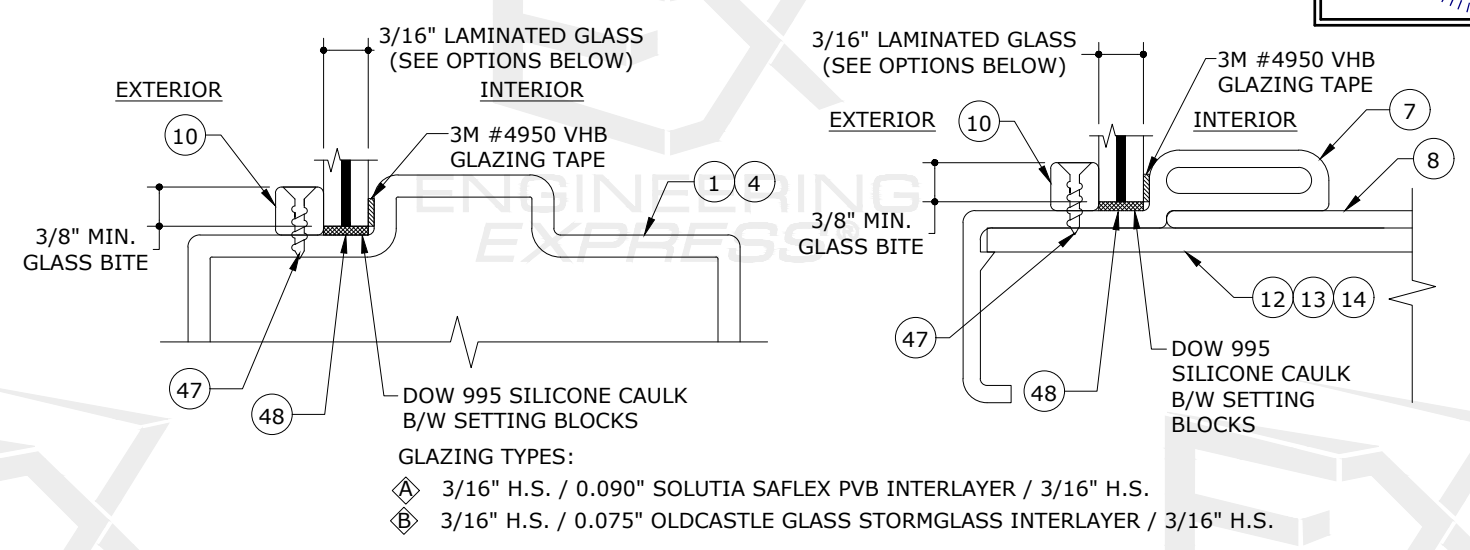
FRANK L. BENNARDO
LICENSE
No 0046549
STATE OF FLORIDA
PROFESSIONAL ENGINEER

SIGNED: &DateI

FL



1 TYPICAL WINDOW MULLION
6" = 1'-0" HORIZ SECTION



2 TYPICAL GLAZING DETAILS
N.T.S. VERT SECTION

ANCHOR SCHEDULE:

SUBSTRATE	ANCHOR	MAXIMUM TYPICAL SPACING	MINIMUM ANCHORAGE AT MULLION
HOLLOW CONCRETE BLOCK OR CONCRETE	1/4" ITW S.S. TAPCONS THROUGH WOOD BUCKS OR DIRECTLY INTO MASONRY/CONCRETE WITH 1-1/4" MINIMUM EMBEDMENT AND 2-1/2" MINIMUM EDGE DISTANCE	8" O.C. MAX	CLUSTER OF (3) ANCHORS, TOP AND BOTTOM, SPACED 3" O.C.
	"T" MASONRY ANCHOR	24" O.C. MAX.	(1) ANCHOR CENTERED AT MULLION, TOP AND BOTTOM.
	WIRE MASONRY ANCHOR	24" O.C. MAX.	(1) ANCHOR CENTERED AT MULLION, TOP AND BOTTOM.
WOOD BUCK OR WOOD HOST STRUCTURE (G=0.55 MINIMUM)	#14 WOOD SCREW WITH 1-1/2" MINIMUM THREAD PENETRATION AND 3/4" MINIMUM EDGE DISTANCE	8" O.C. MAX	CLUSTER OF (2) ANCHORS, TOP AND BOTTOM, SPACED 3" O.C.

ANCHOR NOTES:

- USE IN CONJUNCTION WITH EXTERIOR ELEVATIONS FOR ANCHOR LOCATIONS AND/OR SPACING.
- ANCHORS SHALL BE INSTALLED IN ACCORDANCE WITH MANUFACTURERS' RECOMMENDATIONS.
- WHERE ANCHORS FASTEN TO NARROW FACE OF STUD FRAMING, ANCHOR SHALL BE LOCATED IN CENTER OF NOMINAL 2x (MIN) WOOD STUD (i.e. 3/4" EDGE DISTANCE IS ACCEPTABLE FOR ANCHORS TO WOOD FRAMING).
- WOOD HOST STRUCTURE SHALL BE "SOUTHERN PINE" G=0.55 OR GREATER DENSITY.
- MINIMUM EMBEDMENT SHALL BE AS NOTED IN ANCHOR SCHEDULE. MINIMUM EMBEDMENT AND EDGE DISTANCE EXCLUDES STUCCO, FOAM, BRICK, AND OTHER WALL FINISHES.
- WHERE EXISTING STRUCTURE IS WOOD FRAMING, EXISTING CONDITIONS MAY VARY. FIELD VERIFY THAT FASTENERS ARE INTO ADEQUATE WOOD FRAMING MEMBERS, NOT INTO PLYWOOD.
- WOOD BUCKS (BY OTHERS) SHALL BE ANCHORED PROPERLY TO TRANSFER LOADS TO THE EXISTING STRUCTURE.
- ANCHORAGE WITH 1/4" TAPCONS OR #14 WOOD SCREWS REQUIRES USE OF FRP BLOCK (PART #20).

FL 12574.1

ENGINEERING EXPRESS

POSTAL ADDRESS:
2234 NORTH FEDERAL HWY #7664
BOCA RATON, FL 33431
ENGINEERINGEXPRESS.COM

CORRIM COMPANY FRP, LLC
1870 STILLMAN DRIVE
OSHKOSH, WI 54901
(920) 231-2000

FIBERGLASS FIXED WINDOWS
FLORIDA BUILDING CODE EIGHTH EDITION (2023)
FLORIDA STATEWIDE APPROVAL (FSA FL#12574.1)

REMARKS	DRWN	CHKD	DATE
PREV. SUBMITTAL (20-28680)	CCB	RWV	07/07/20
2023 FBC UPDATE	MRT	RWV	10/16/23

COPYRIGHT ENGINEERING EXPRESS®

23-62467

SCALE: NTS UNLESS NOTED

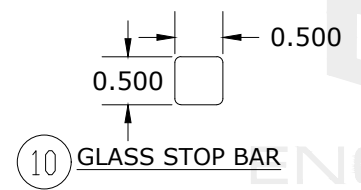
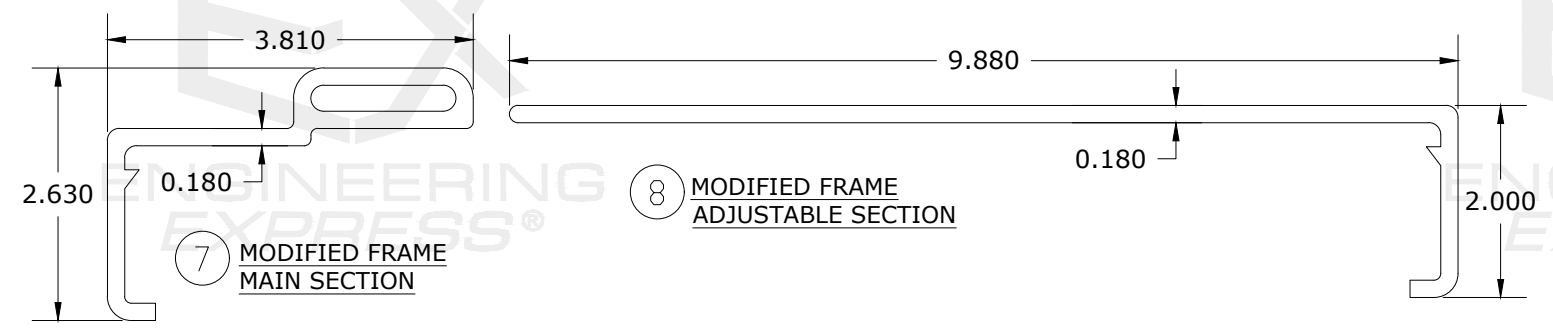
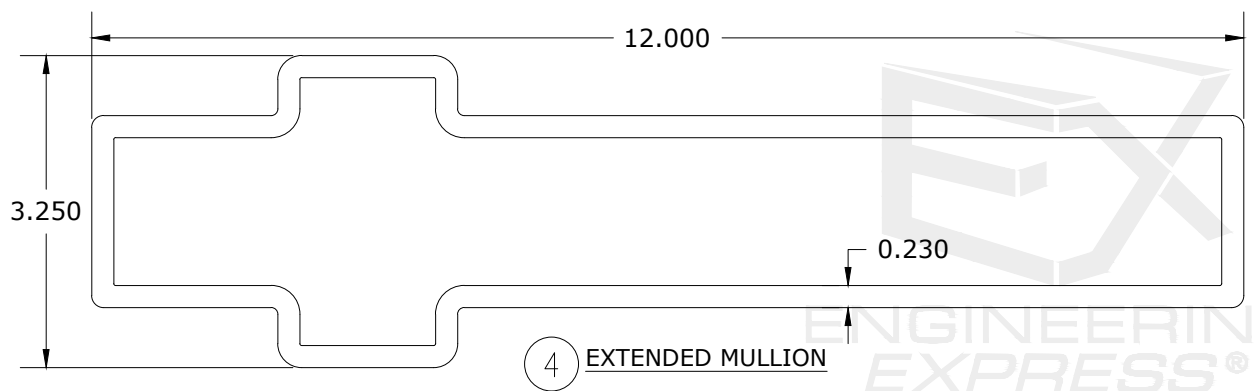
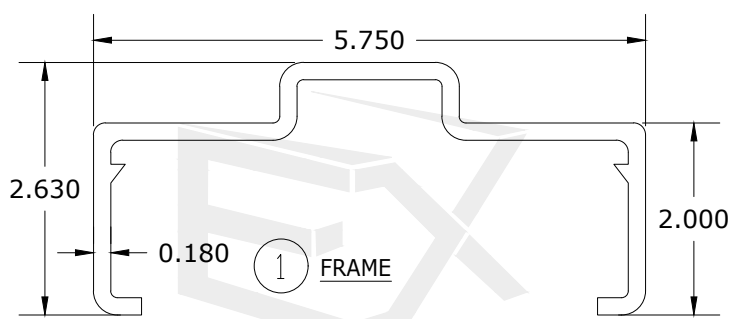
4 OF 5

c:\users\rickn\engineering\express\production - documents\projects\23-123-62467 2023 product fbc update fl12574\work\2023 fbc\drawings & cad\23-62467a - fl12574.1 - dwg.dwg

FRANK BENNARDO, P.E.
PE# 0046549 CA# 9885

OCTOBER 20, 2023

FL



ITEM #	PART #	ITEM DESCRIPTION	MANUFACTURER/NOTES
PARTS			
1	FBC-100-15-50	FRAME	FIBERGLASS
4	FBC-100-6-50	EXTENDED MULLION	FIBERGLASS
7	FBC-100-26-50	MODIFIED FRAME MAIN SECTION	FIBERGLASS
8	FBC-100-27-50	MODIFIED FRAME ADJUSTABLE SECTION	FIBERGLASS
10	FBC-100-9-50	GLASS STOP BAR	FIBERGLASS
12	FBC-100-7-50	HARDWARE PLATE .1875" X 5.25" X 8"	FIBERGLASS
13	FBC-100-7-50	HARDWARE PLATE .1875" X 7.5" X 8"	FIBERGLASS
14	FBC-100-7-50	HARDWARE PLATE .1875" X 11.5" X 8"	FIBERGLASS
20	-	FRP BLOCK (1.25" X 1.25" X .125" WALL)	CORRIM
21	-	T-STRAP	CORRIM
22	-	ADJUSTABLE WIRE ANCHOR	CORRIM
47	-	NO. 6 X 3/4" S.S. FH SMS	1 1/2" FROM CORNERS & 5" TO 6" O.C.
48	-	83 +/- 5 SHORE A DUROMETER SETTING BLOCK CENTERED AT 1/4 POINTS	

- THE FOLLOWING ALTERNATE HARDWARE OPTIONS ARE APPROVED FOR USE WITH THIS PRODUCT:
- HAGER 3200 SERIES DEADBOLT (WITHOUT LOCKSET): FL PRODUCT APPROVAL FL22010.3
 - CORBIN RUSSWIN CL3100 CYLINDER LATCH AND DL3000 DEAD BOLT: FL PRODUCT APPROVAL FL3067.3
 - YALE 8800 LOCKSET: FL PRODUCT APPROVAL FL3063.16
 - CAL-ROYAL NM-MORTISE LOCK: FL PRODUCT APPROVAL FL13922
 - DORMAKABA M9000 LOCKSET: FL PRODUCT APPROVAL FL16734.7
 - HAGER 4500 SVR EXIT DEVICE: FL PRODUCT APPROVAL FL23130.7 & NOA 21-0318.12 (OR CURRENT NOA VERSION IF SUPERCEDED)
 - VON DUPRIN 98/9927F AND/OR FALCON F-25-V SVR PANIC EXIT DEVICE: FL PRODUCT APPROVAL FL14482.3
 - DORMA 9400 SVR PANIC EXIT: FL PRODUCT APPROVAL FL31964.3
 - DETEX HV40 RIM EXIT DEVICE: FL PRODUCT APPROVAL FL19181.1
 - DORMAKABA HC2100 RIM EXIT DEVICE AND HCK822 REMOVABLE MULLION: FL PRODUCT APPROVAL FL16202.6
 - CORBIN RUSSWIN FE5400S: UL APPROVAL ZHLLR21836

***ALTERNATE HARDWARE NOTE: USE OF THE ALTERNATE HARDWARE OPTIONS LISTED REQUIRES THE THE MAXIMUM ALLOWABLE DESIGN PRESSURE TO BE LIMITED TO THE ALLOWABLE DESIGN PRESSURE OF THE LOWEST APPROVAL PART**

FL 12574.1

ENGINEERING EXPRESS

POSTAL ADDRESS:
2234 NORTH FEDERAL HWY #7664
BOCA RATON, FL 33431
ENGINEERINGEXPRESS.COM

CORRIM COMPANY FRP, LLC

1870 STILLMAN DRIVE
OSHKOSH, WI 54901
(920) 231-2000

FIBERGLASS FIXED WINDOWS
FLORIDA BUILDING CODE EIGHTH EDITION (2023)
FLORIDA STATEWIDE APPROVAL (FSA FL#12574.1)

REMARKS	DRWN	CHKD	DATE
PREV. SUBMITTAL (20-28680)	CCB	RWN	07/07/20
2023 FBC UPDATE	MRT	RWN	10/16/23

COPYRIGHT ENGINEERING EXPRESS®

23-62467

SCALE: NTS UNLESS NOTED

5 OF 5

c:\users\rickn\engineering\express\production - documents\projects\23-123-62467 2023 product.fbc.update fl.12574\work\2023 fbc\drawings & cad\23-62467a - fl.12574.1 - dwg.dwg

10/20/2023 4:33 PM RICKN