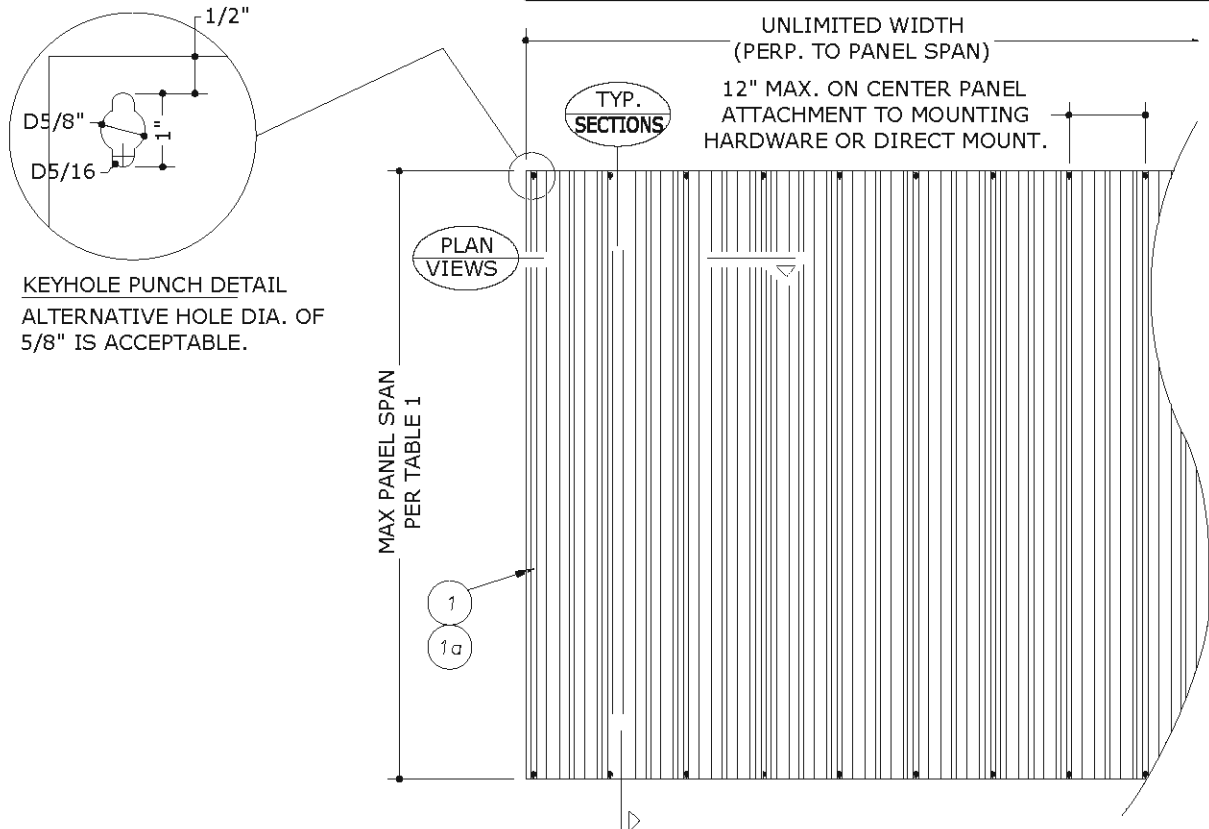


# 24GA STEEL STORM PANEL

FOR USE OUTSIDE THE HVHZ & WIND ZONE 4



KEYHOLE PUNCH DETAIL  
ALTERNATIVE HOLE DIA. OF  
5/8" IS ACCEPTABLE.

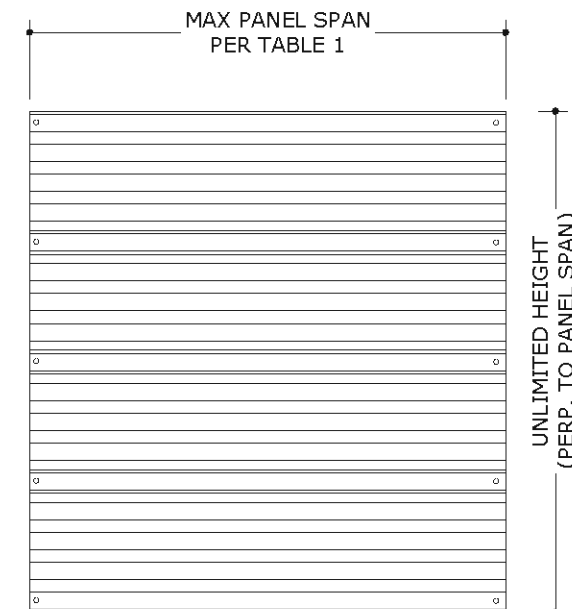
NOTE: TOP MAY BE SLOPED OR RADIUS TO MATCH GEOMETRY OF  
OPENING. MOUNTING HARDWARE MUST BE ROLL-FORMED TO THE RADIUS;  
NO NOTCHING OF MOUNTING HARDWARE TO ACHIEVE SHAPES IS ALLOWED.



TABLE 1 ALLOWABLE SPAN SCHEDULE (STEEL PANELS ONLY)		
PANEL SPAN	ALLOWABLE DESIGN PRESSURE	
120"	+ 35.0 PSF	- 38.0 PSF
114"	+ 39.2 PSF	- 41.1 PSF
108"	+ 44.2 PSF	- 44.7 PSF
106"	+ 46.0 PSF	- 46.0 PSF
102"	+ 49.7 PSF	- 49.7 PSF
96"	+ 56.1 PSF	- 56.1 PSF
90"	+ 63.9 PSF	- 63.9 PSF
84"	+ 73.4 PSF	- 73.4 PSF
78"	+ 85.2 PSF	- 85.2 PSF
72"	+ 100.0 PSF	- 100.0 PSF

**TABLE 1 NOTES:**

- LINEAR INTERPOLATION BETWEEN SHUTTER SPANS IS NOT PERMITTED. FOR SPANS ABOVE, THE DESIGN PRESSURES FOR THE NEXT HIGHER SPAN SHALL BE USED.
- DESIGN PRESSURES NOTED IN TABLE 1 APPLY TO ALL MOUNTING AND ANCHORAGE CONDITIONS AND SHALL NOT BE EXCEEDED.



## GENERAL NOTES

1. THE SYSTEM DESCRIBED HEREIN HAS BEEN DESIGNED AND TESTED AS A LARGE MISSILE IMPACT PROTECTIVE SYSTEM IN ACCORDANCE WITH THE FLORIDA BUILDING CODE SEVENTH EDITION (2020), INTERNATIONAL BUILDING CODE (IBC) AND INTERNATIONAL RESIDENTIAL CODE (IRC) FOR USE OUTSIDE THE HIGH VELOCITY HURRICANE ZONE & WIND ZONE 4. SEE PRODUCT EVALUATION REPORT FOR MORE INFORMATION.
2. NO 33-1/3% INCREASE IN ALLOWABLE STRESS HAS BEEN USED IN THE DESIGN OF THIS SYSTEM. WIND LOAD DURATION FACTOR Cd=1.6 HAS BEEN USED FOR WOOD ANCHOR DESIGN.
3. POSITIVE AND NEGATIVE DESIGN PRESSURES CALCULATED FOR USE WITH THIS SYSTEM SHALL BE DETERMINED PER SEPARATE ENGINEERING IN ACCORDANCE WITH THE GOVERNING CODE. PRESSURE REQUIREMENTS AS DETERMINED IN ACCORDANCE WITH ASCE 7 AND CHAPTER 1609 OF THE FLORIDA BUILDING CODE SEVENTH EDITION (2020) SHALL BE LESS THAN OR EQUAL TO THE POSITIVE OR NEGATIVE DESIGN PRESSURE CAPACITY VALUES LISTED HEREIN FOR ANY ASSEMBLY AS SHOWN.
4. DESIGN PRESSURES NOTED HEREIN ARE BASED ON MAXIMUM TESTED PRESSURES DIVIDED BY A 1.5 SAFETY FACTOR.
5. THIS SYSTEM HAS BEEN DESIGNED WITH NO SEPARATION FROM GLAZING AND IS INTENDED FOR USE IN WIND ZONES 1-3 ONLY.
6. THE SYSTEM DETAILED HEREIN IS GENERIC AND DOES NOT PROVIDE INFORMATION FOR A SPECIFIC SITE. FOR SITE CONDITIONS DIFFERENT FROM THE CONDITIONS DETAILED HEREIN, A LICENSED ENGINEER OR REGISTERED ARCHITECT SHALL PREPARE SITE SPECIFIC DOCUMENTS FOR USE IN CONJUNCTION WITH THIS DOCUMENT.
7. THESE INSTALLATION INSTRUCTIONS ARE PART OF A PRODUCT APPROVAL EVALUATION AND SHALL ONLY BE USED IN CONJUNCTION WITH THE EVALUATION REPORT SUBMITTED FOR THE SAME PRODUCT APPROVAL. USE OF THESE APPROVAL DOCUMENTS SHALL COMPLY WITH CHAPTER 61G15 OF THE FLORIDA ADMINISTRATIVE CODE.
8. PERMIT HOLDER SHALL VERIFY THE ADEQUACY OF THE EXISTING STRUCTURE TO WITHSTAND SUPERIMPOSED LOADS. BRICK VENEER PER ASTM C62 (BY OTHERS) SHALL BE ANCHORED PROPERLY TO TRANSFER ANY APPLICABLE LOADS TO THE EXISTING HOST STRUCTURE.
9. STORM PANELS SHALL BE ASTM A653 GRADE 40 STEEL WITH G60 GALVANIZED COATING, TESTED THICKNESS 0.0232".
10. ALL POLYCARBONATE PANELS SHALL BE MANUFACTURED BY TRANSPARENT PROTECTION SYSTEMS, Inc.
11. ALL POLYCARBONATE PANELS SHALL BE EXTRUDED WITH THICKNESS t=0.100" (±0.010") AND SHALL BE MANUFACTURED FROM 100% SYNTHETIC THERMOPLASTIC POLYMER RESIN (UV STABILIZED). TYPICAL TENSILE STRENGTH Fy=8.908 KSI, FLEXURAL STRENGTH Fby=12.90 KSI, & FLEXURAL MODULUS IS 328.7 KSI.
12. ALL EXTRUSIONS SHALL BE 6063-T6 ALUMINUM ALLOY, UNLESS NOTED OTHERWISE. ALL TOLERANCES SHALL BE IN ACCORDANCE WITH ADM 2015.
13. TOP & BOTTOM DETAILS SHOWN MAY BE INTERCHANGED AS FIELD CONDITIONS DICTATE. PANELS MAY BE MOUNTED VERTICALLY OR HORIZONTALLY AS APPLICABLE.
14. PANELS SHALL BE PERMANENTLY LABELED WITH LABELS SPACED NOT MORE THAN EVERY THREE LINEAL FEET PER PANEL AND SHALL FACE THE EXTERIOR AND CONTAIN AT LEAST THE FOLLOWING:  
**TOWN & COUNTRY INDUSTRIES**  
**FT. LAUDERDALE, FL**  
**ASTM E330, E1886, & E1996 9 LB MISSILE LEVEL D**  
**FLORIDA PRODUCT APPROVAL NUMBER**
15. ALL BOLTS & WASHERS SHALL BE ZINC COATED STEEL, GALVANIZED STEEL, STAINLESS STEEL, OR 2024-T6 ALUMINUM ALLOY WITH A MINIMUM TENSILE YIELD STRENGTH OF 33 KSI, UNLESS OTHERWISE NOTED HEREIN.
16. CONTRACTOR IS RESPONSIBLE TO INSULATE OR PROTECT ALL MEMBERS FROM DISSIMILAR MATERIALS TO PREVENT ELECTROLYSIS.
17. SEALANT SHALL BE USED ON ANCHORS OR TRACKS WHEREVER WATER SEEPAGE IS POSSIBLE.

FRANK BENNARDO, PE  
PE# 0046549 CA#9885



**ENGINEERING EXPRESS**  
CORPORATE OFFICE:  
160 SW 12th AVE, SUITE 106  
DEERFIELD BEACH, FL 33442  
(954) 354-0660 | (866) 996-9999  
TEAM@ENGINEERINGEXPRESS.COM  
ENGINEERINGEXPRESS.COM

**Town & Country INDUSTRIES**  
Wholesale Aluminum and Building Products  
A Division of AEC Study, Inc.  
400 WEST MCNAB ROAD  
FT. LAUDERDALE, FL 33309  
FL12856.3

REMARKS	DRWN	CHKD	DATE
INIT ISSUE	CSL	FLB	4/01/15
2017 FBC	RWN	FLB	8/01/17
2020 FBC	CCB	RWN	6/17/20

THIS DOCUMENT IS THE PROPERTY OF FRANK L. BENNARDO, PE AND SHALL NOT BE REPRODUCED, COPIED, OR TRANSMITTED IN ANY FORM OR BY ANY MEANS, ELECTRONIC OR MECHANICAL, INCLUDING PHOTOCOPYING, RECORDING, OR BY ANY INFORMATION STORAGE AND RETRIEVAL SYSTEM. ANY UNAUTHORIZED USE OF THIS DOCUMENT IS STRICTLY PROHIBITED AND WILL BE PROSECUTED TO THE FULL EXTENT OF THE LAW.

COPYRIGHT FRANK L. BENNARDO P.E.

20-26152

SCALE: -  
PAGE DESCRIPTION:

1 OF 10

VISIT [ECALC.IO/26152](http://ECALC.IO/26152)

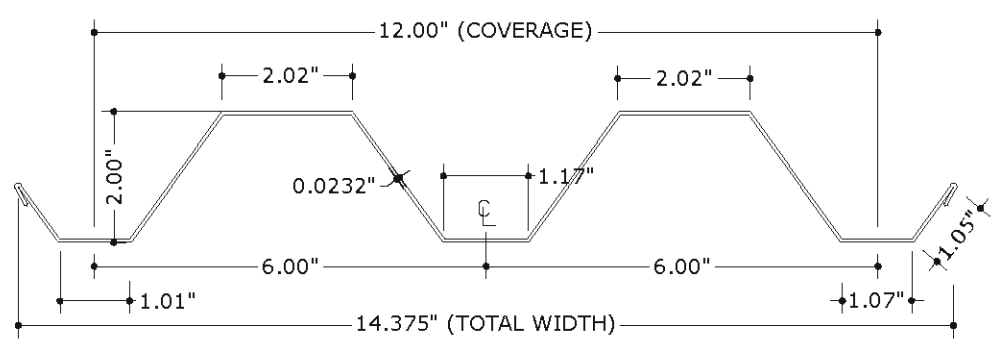
FOR SITE SPECIFIC DEVIATIONS  
& MORE INFORMATION ABOUT THIS DOCUMENT  
OR SCAN THIS QR CODE

VISIT [ENGINEERINGEXPRESS.COM/STORE](http://ENGINEERINGEXPRESS.COM/STORE)  
FOR ADDITIONAL PLANS, REPORTS & RESOURCES

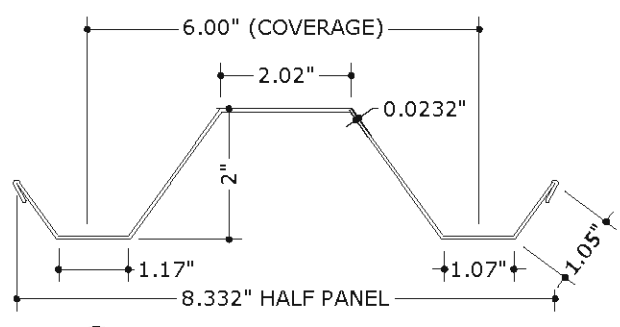


**ENGINEERING EXPRESS**  
CORPORATE OFFICE:  
160 SW 12th AVE, SUITE 106  
DEERFIELD BEACH, FL 33442  
(954) 354-0660 | (866) 396-9999  
TEAM@ENGINEERINGEXPRESS.COM  
ENGINEERINGEXPRESS.COM

**Town Country INDUSTRIES**  
Wholesale Aluminum and Building Products  
A Division of AEC Supply Co., Inc.  
400 WEST MCNAB ROAD  
FT. LAUDERDALE, FL 33309  
FL12856.3

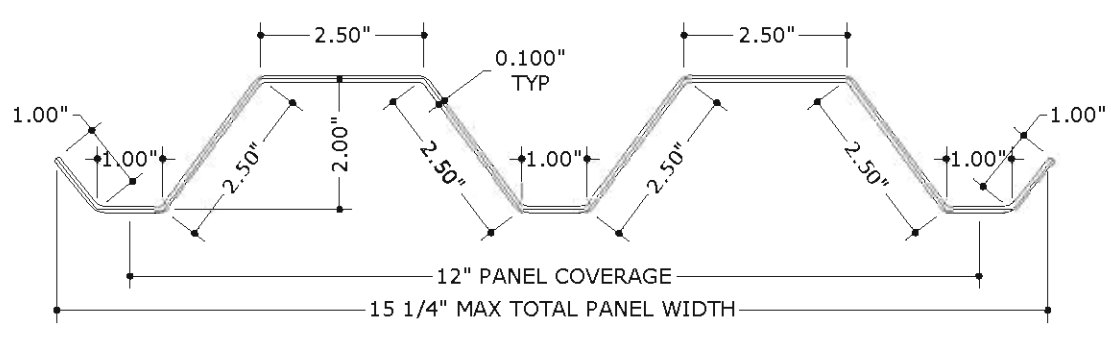


**1 STEEL STORM PANEL**

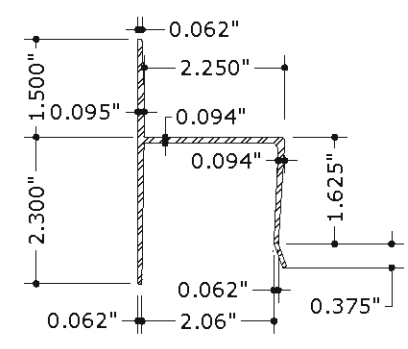


**1a STEEL HALF STORM PANEL**

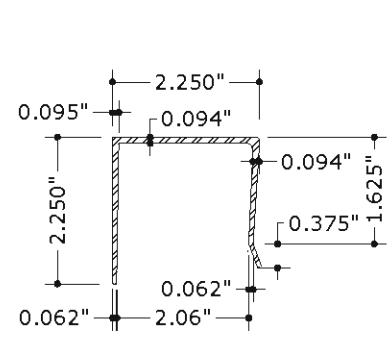
NOTE: HALF STORM PANEL SHALL ONLY BE USED AS AN END PANEL TO CLOSE THE REMAINING OPENING THAT MAY BE LESS THAN FULL PANEL WIDTH



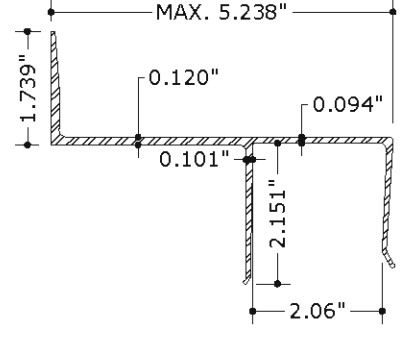
**1b POLYCARBONATE STORM PANEL**



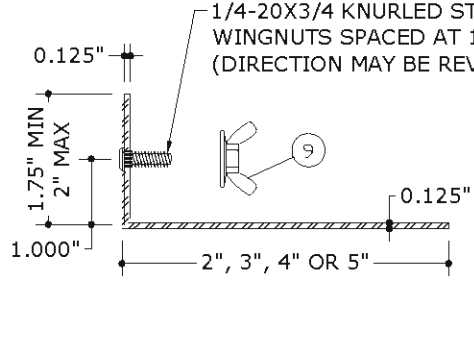
**2 H HEADER**



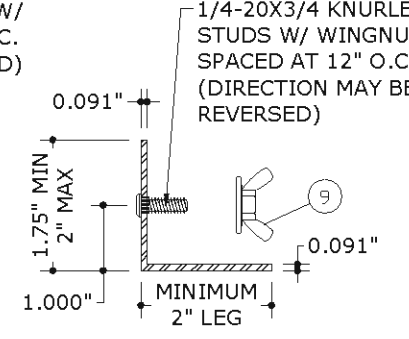
**3 U HEADER**



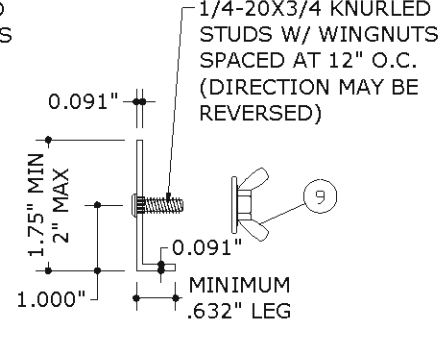
**3a BUILD-OUT U HEADER**



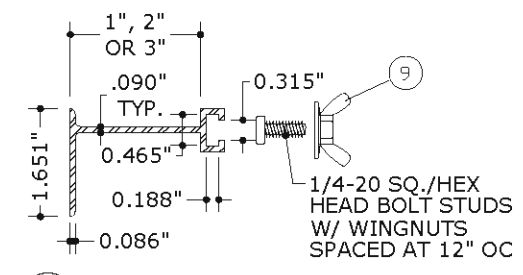
**4 STUD ANGLE**  
SEE COMPONENT NOTES



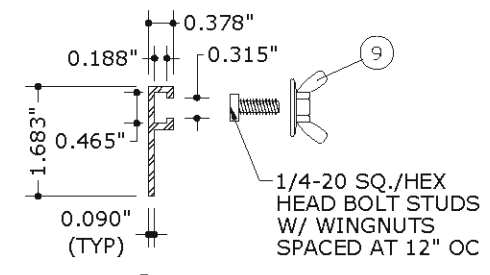
**4a STUD ANGLE**  
SEE COMPONENT NOTES



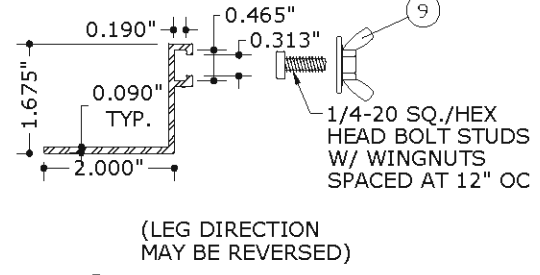
**4b STUD ANGLE**  
SEE COMPONENT NOTES



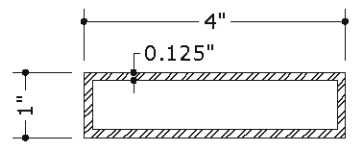
**7 BUILD-OUT F TRACK**



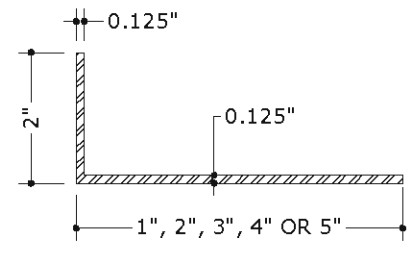
**8 F TRACK**



**8a F ANGLE TRACK**

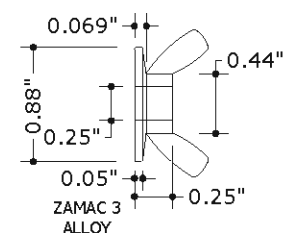


**6 TUBE**



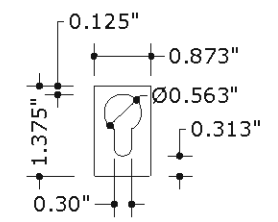
**5 ANGLE**

**COMPONENT NOTES**  
ANCHOR HEADS MUST NOT INTERFERE WITH INSTALLATION OF THE PANEL. THE FIRST AND LAST ANCHOR IN ALL TRACKS SHALL BE INSTALLED WITHIN THE FIRST 3\"/>



**9 WASHER WINGNUT**

NON-RECESSED FLAT SURFACE TYPE ONLY

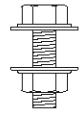


**10 KEYHOLE WASHER**

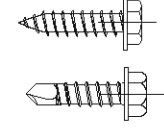
20 GA. GALV. STEEL (t=.038\"/>



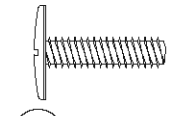
**11 1/4-20 SQ./HEX HEAD BOLT**



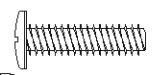
**12 1/4-20 316 SS MACHINE BOLT W/NUT**



**13 #14x3/4 SDS/SMS SCREW**



**14 1/4-20 SIDEWALK BOLT**



**15 1/4-20 TRUSS HEAD BOLT**

REQUIRES USE OF KEYHOLE WASHER IN DIRECT MOUNT APPLICATIONS

REMARKS	DRWN	CHKD	DATE
INIT ISSUE	CSL	FLB	4/01/15
2017 FBC	RWN	FLB	8/01/17
2020 FBC	CCB	RWN	6/17/20

THIS DOCUMENT IS THE PROPERTY OF FRANK L. BENNARDO, P.E. AND SHALL NOT BE REPRODUCED, COPIED, OR TRANSMITTED IN ANY FORM OR BY ANY MEANS, ELECTRONIC OR MECHANICAL, INCLUDING PHOTOCOPYING, RECORDING, OR BY ANY INFORMATION STORAGE AND RETRIEVAL SYSTEM. ANY UNAUTHORIZED USE, ALTERATION, REPRODUCTION, OR DISTRIBUTION OF THIS DOCUMENT IS STRICTLY PROHIBITED AND WILL BE PUNISHED TO THE FULL EXTENT OF THE LAW.

COPYRIGHT FRANK L. BENNARDO P.E.

20-26152

SCALE: -

PAGE DESCRIPTION:

OF 10

C:\Users\rickn\Engineering\Express\Production - Documents\Projects\20-26152 - FL12856.3 - 24ga Steel Storm Panel\WP12020 FBC\20-26152c - FL12856.3 - DWG.dwg  
09/30/2020 - 2:32pm  
rickn



**ENGINEERING EXPRESS**  
CORPORATE OFFICE:  
160 SW 12th AVE, SUITE 106  
DEERFIELD BEACH, FL 33442  
(954) 354-0660 | (866) 396-9999  
TEAM@ENGINEERINGEXPRESS.COM  
ENGINEERINGEXPRESS.COM

**Town Country INDUSTRIES**  
Wholesale Aluminum and Building Products  
A Division of AEC Supply Co., Inc.  
400 WEST MCNAB ROAD  
FT. LAUDERDALE, FL 33309  
FL12856.3

REMARKS	DRWN	CHKD	DATE
INIT ISSUE	CSL	FLB	4/01/15
2017 FBC	RWN	FLB	8/01/17
2020 FBC	CCB	RWN	6/17/20

THIS DOCUMENT IS THE PROPERTY OF FRANK L. BENNARDO, P.E. AND SHALL NOT BE REPRODUCED, COPIED, OR TRANSMITTED IN ANY FORM OR BY ANY MEANS, ELECTRONIC OR MECHANICAL, INCLUDING PHOTOCOPYING, RECORDING, OR BY ANY INFORMATION STORAGE AND RETRIEVAL SYSTEM, WITHOUT THE WRITTEN PERMISSION OF FRANK L. BENNARDO, P.E. ANY ALTERATIONS, ADDITIONS, DELETIONS, OR OTHER MARKINGS TO THIS DOCUMENT ARE NOT PERMITTED AND INVALIDATE OUR CERTIFICATION.

COPYRIGHT FRANK L. BENNARDO P.E.

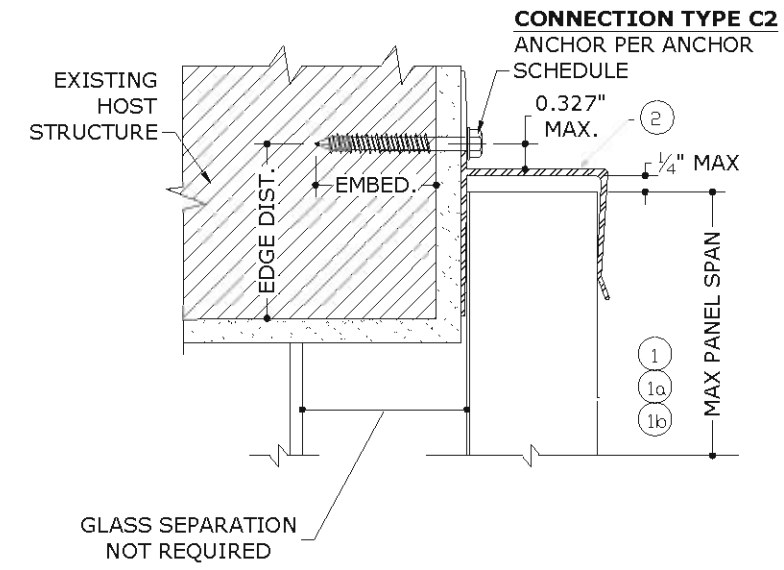
20-26152

SCALE: -

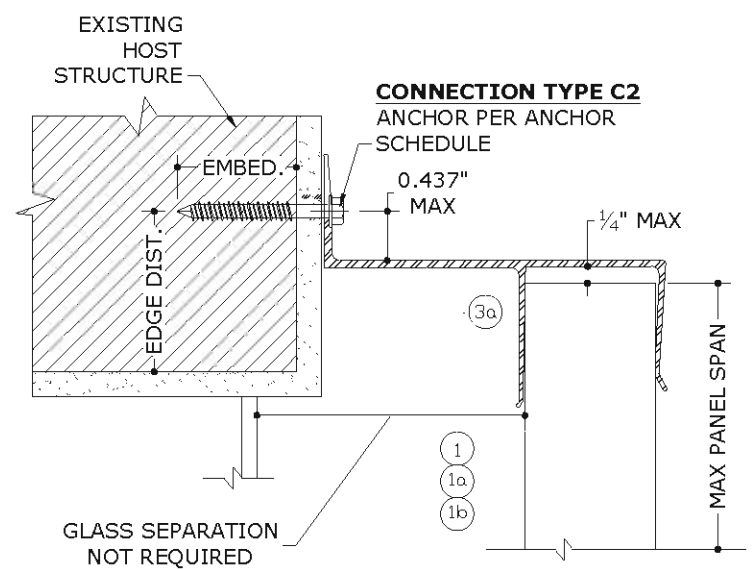
PAGE DESCRIPTION:

OF 10

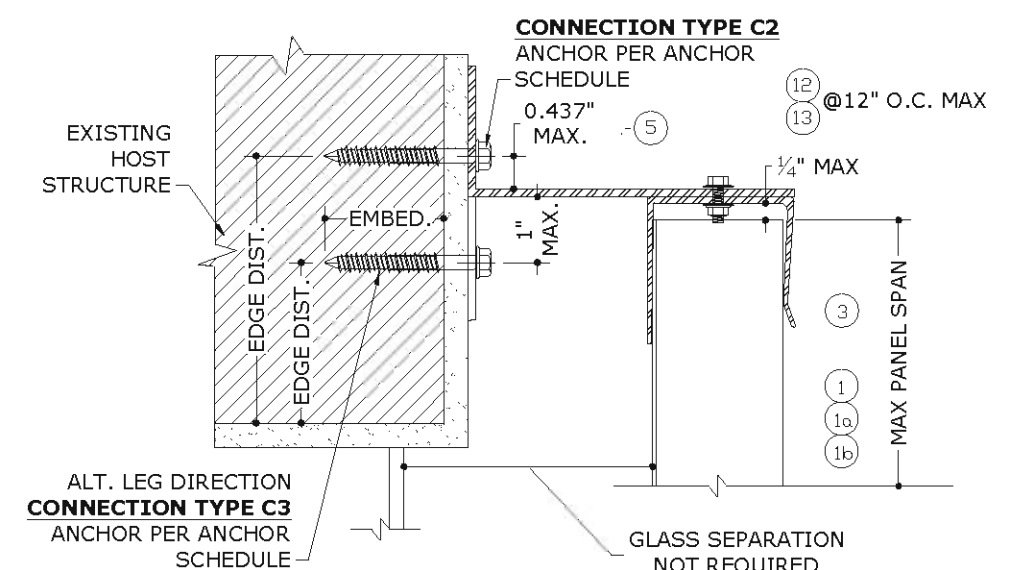
3



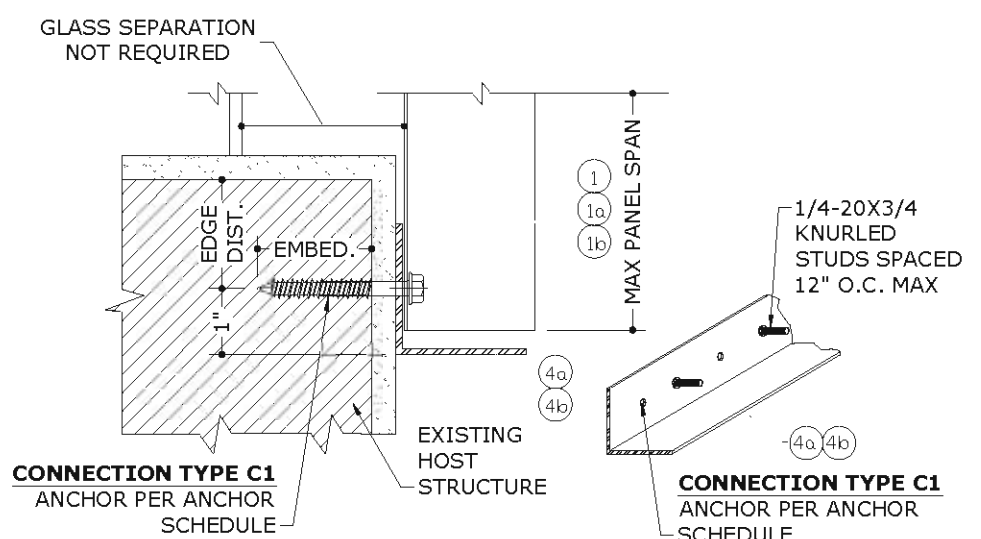
**A "H" MOUNT SECTION**



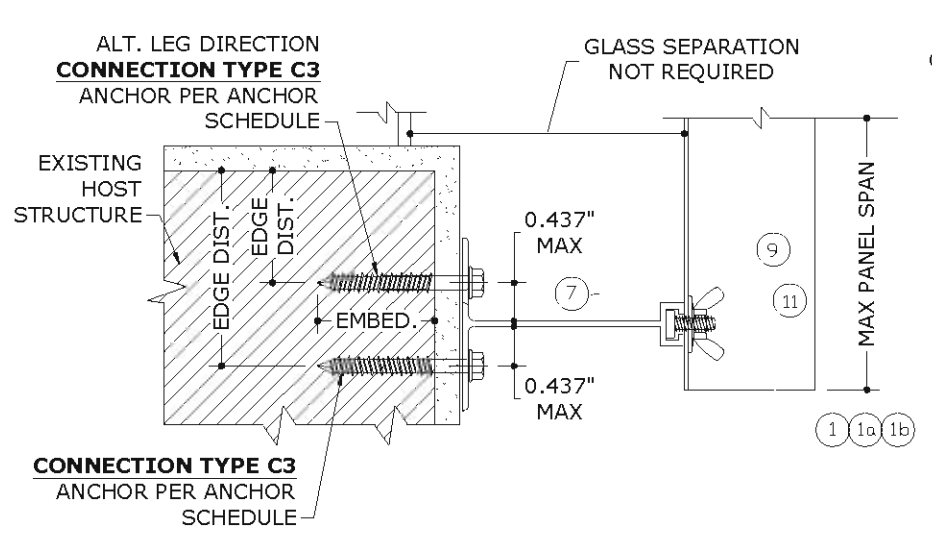
**B BUILD-OUT "U" MOUNT SECTION**



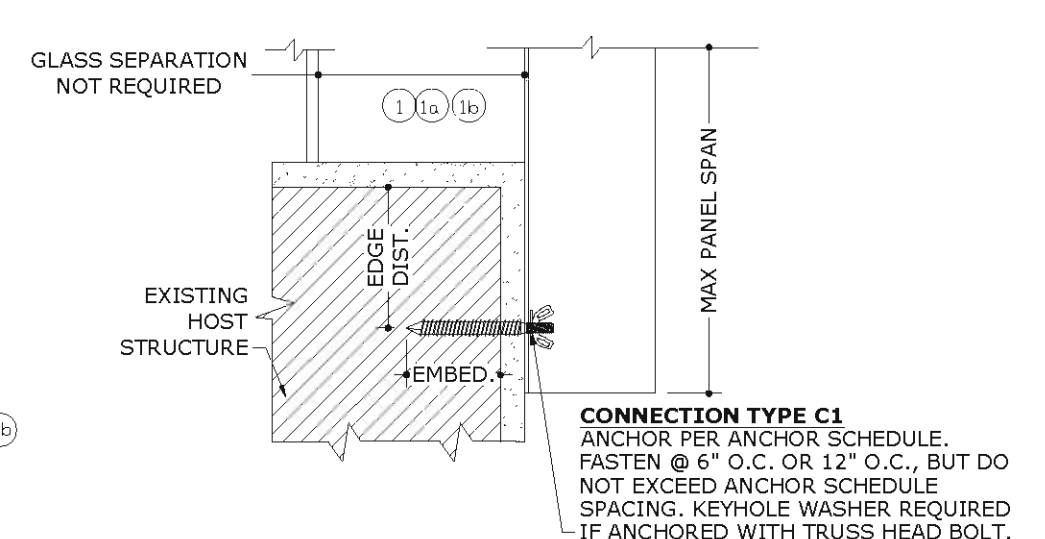
**C ALT. BUILD-OUT "U" MOUNT SECTION**



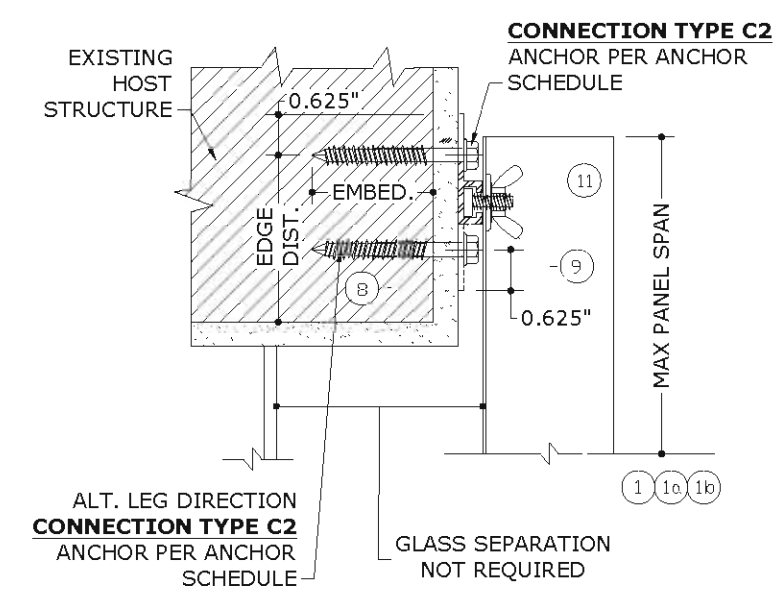
**D STUD ANGLE WALL MOUNT SECTION**



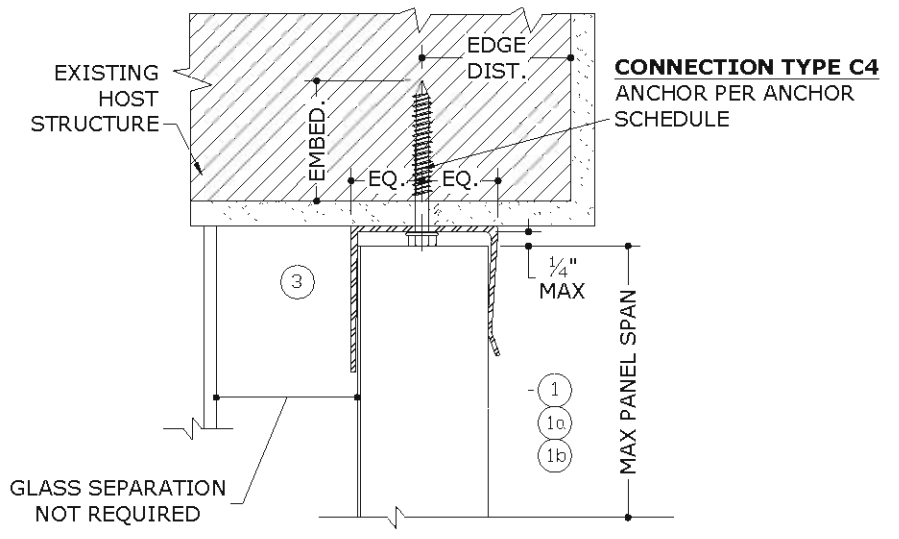
**E BUILD-OUT "F" TRACK SECTION**



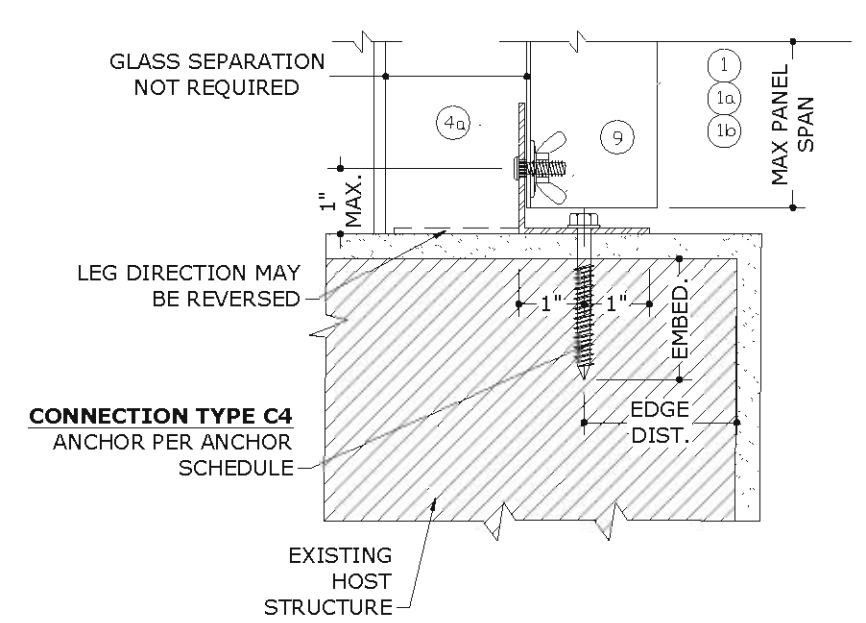
**F DIRECT MOUNT SECTION**



**G "F" TRACK MOUNT SECTION**



**H TRAP "U" HEADER SECTION**

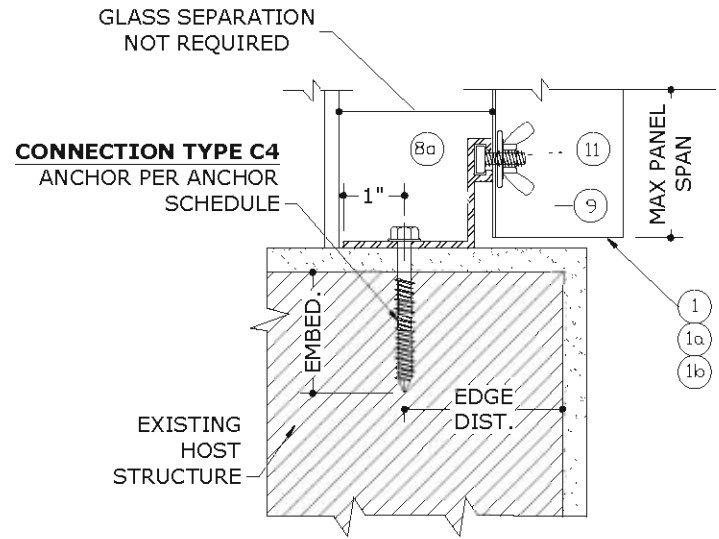


**I TRAP STUD ANGLE SECTION**

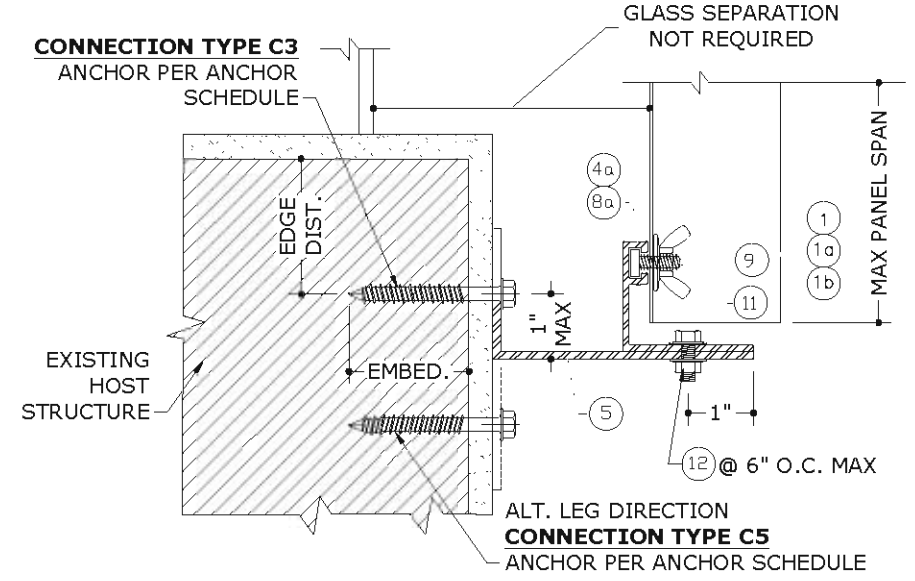
C:\Users\rickn\Engineering\Projects\20-26152 - FL12856.3 - 24ga Steel Storm Panel\WP2020 FBC\20-26152c - FL12856.3 - DWG.dwg

09/30/2020 - 2:32pm rickn

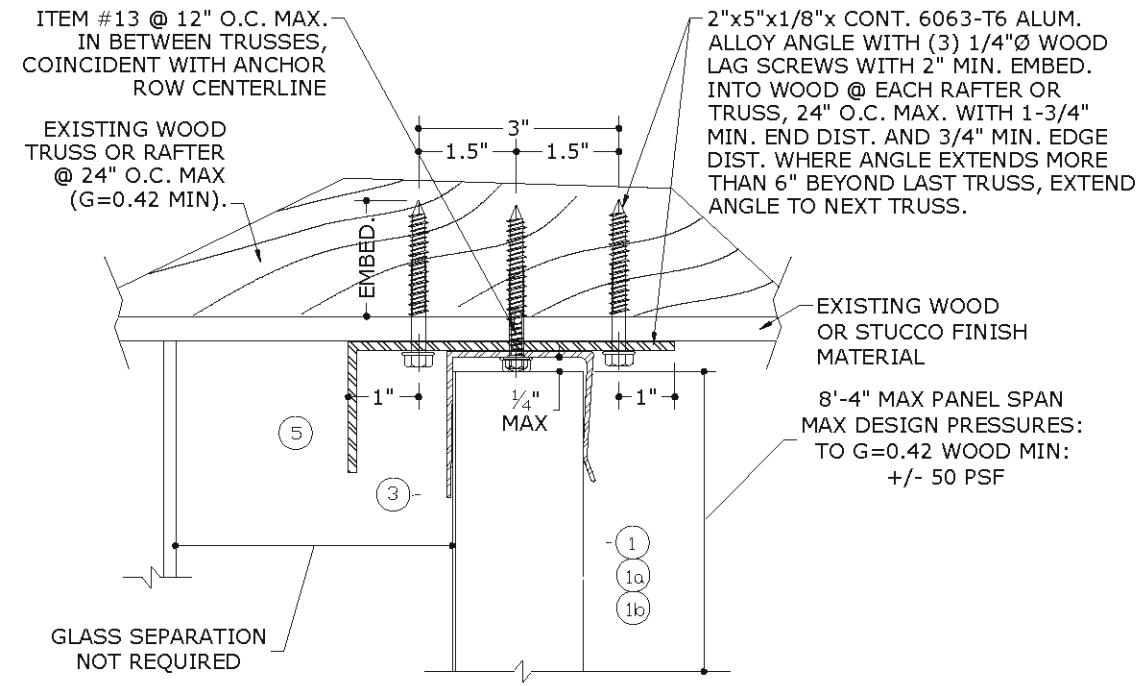




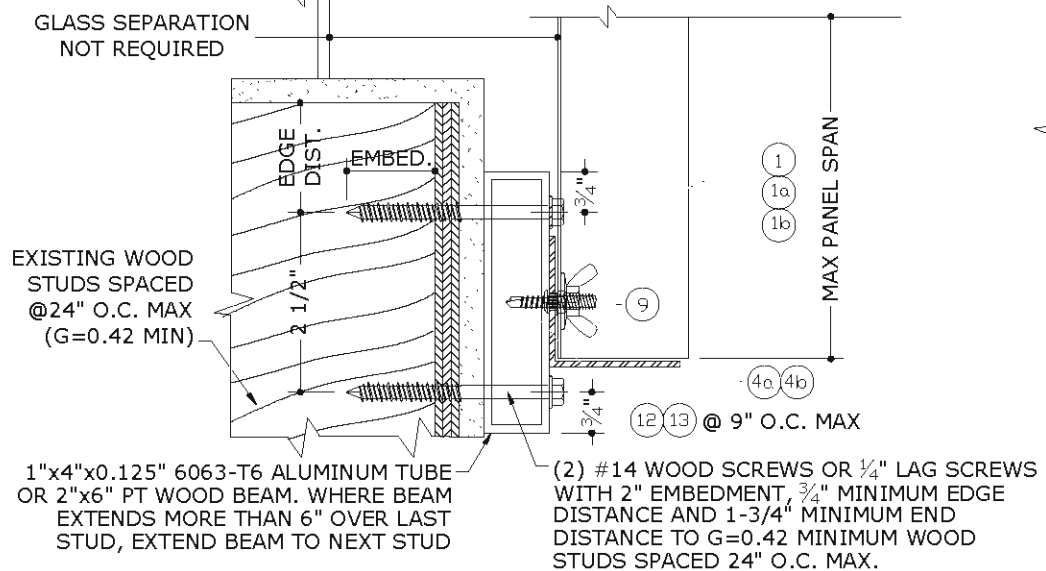
**J "F" ANGLE TRACK MOUNT SECTION**



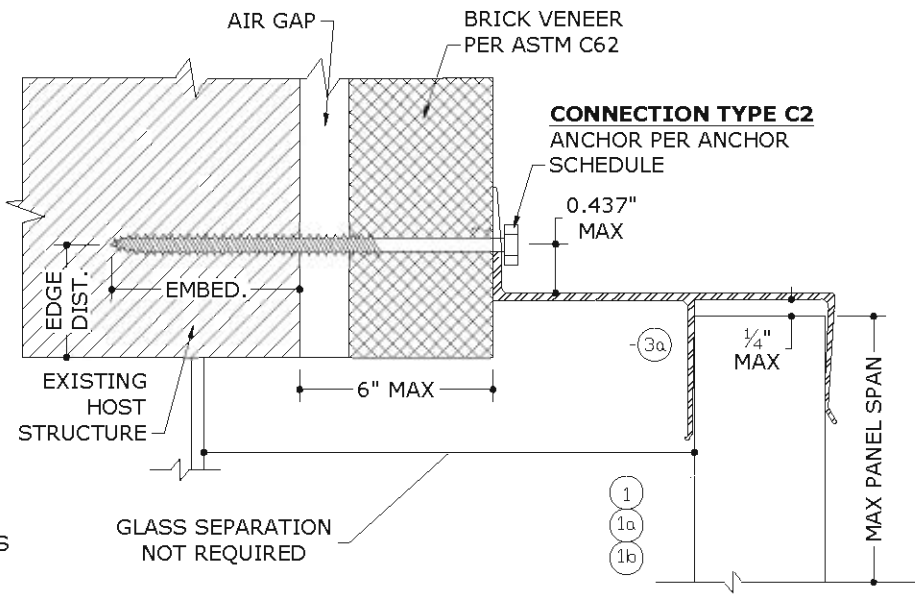
**K REVERSE "F" ANGLE TRACK MOUNT SECTION**



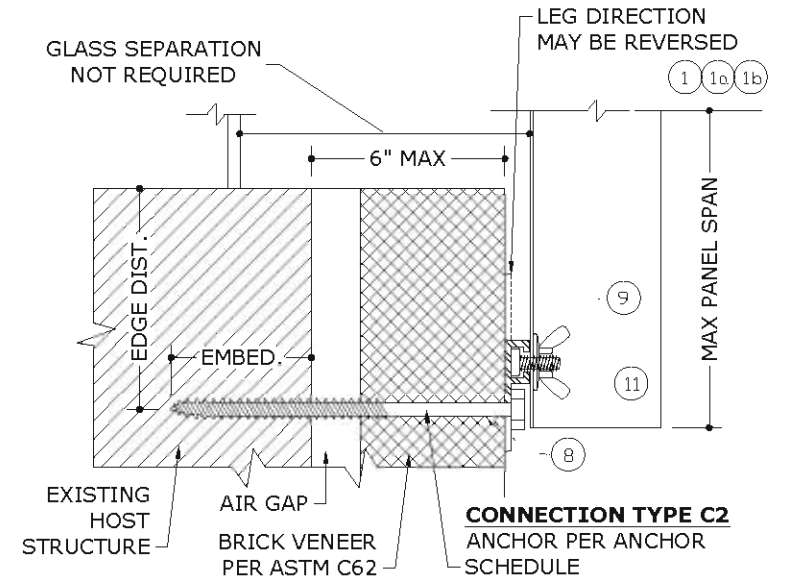
**L CEILING MOUNT/BUILD-OUT SECTION**



**M STUD ANGLE BUILD-OUT MOUNT SECTION INTO STUD WALL**



**N "U" HEADER BUILD-OUT THROUGH VENEER OVER STRUCTURAL BASE SECTION**



**O DIRECT MOUNT THROUGH VENEER OVER STRUCTURAL BASE SECTION**

FRANK BENNARDO, PE  
PE# 0046549 CA#9885

**ENGINEERING EXPRESS**  
CORPORATE OFFICE:  
160 SW 12th AVE, SUITE 106  
DEERFIELD BEACH, FL 33442  
(954) 354-0660 | (866) 396-9999  
TEAM@ENGINEERINGEXPRESS.COM  
ENGINEERINGEXPRESS.COM

**Town & Country INDUSTRIES**  
Wholesale Aluminum and Building Products  
A Division of AEC Supply Co., Inc.

400 WEST MCNAB ROAD  
FT. LAUDERDALE, FL 33309

FL12856.3

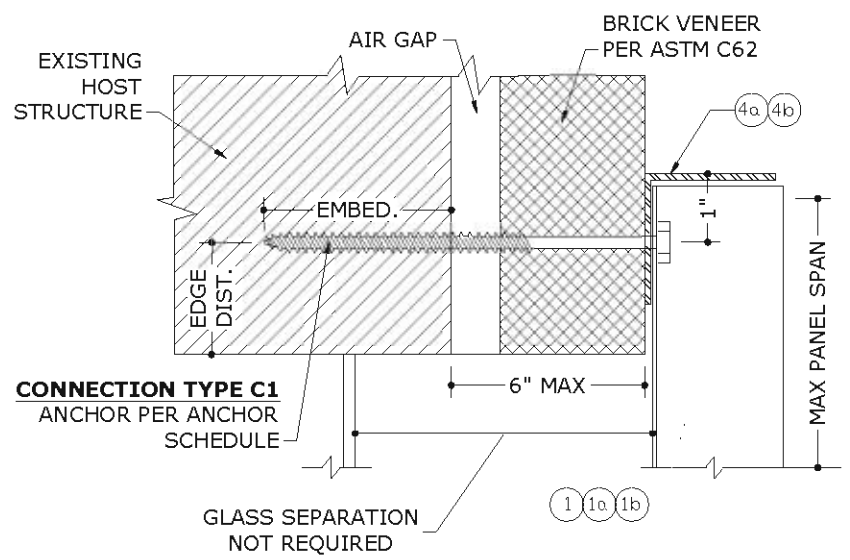
REMARKS	DRWN	CHKD	DATE
INIT ISSUE	CSL	FLB	4/01/15
2017 FBC	RWN	FLB	8/01/17
2020 FBC	CCB	RWN	6/17/20

THIS DOCUMENT IS THE PROPERTY OF FRANK L. BENNARDO, P.E. AND SHALL NOT BE REPRODUCED, COPIED, OR TRANSMITTED IN ANY FORM OR BY ANY MEANS, ELECTRONIC OR MECHANICAL, INCLUDING PHOTOCOPYING, RECORDING, OR BY ANY INFORMATION STORAGE AND RETRIEVAL SYSTEM, WITHOUT THE WRITTEN PERMISSION OF FRANK L. BENNARDO, P.E. ANY ALTERATIONS, ADDITIONS, DELETIONS, OR OTHER MARKINGS TO THIS DOCUMENT ARE NOT PERMITTED AND INVALIDATE OUR CERTIFICATION.

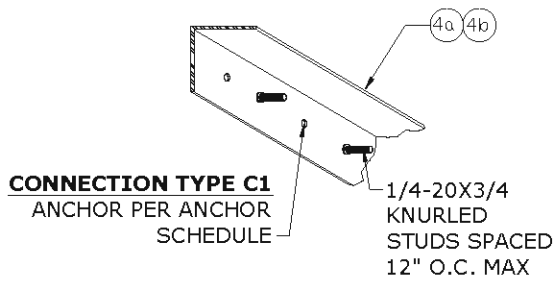
20-26152  
SCALE:  
PAGE DESCRIPTION:



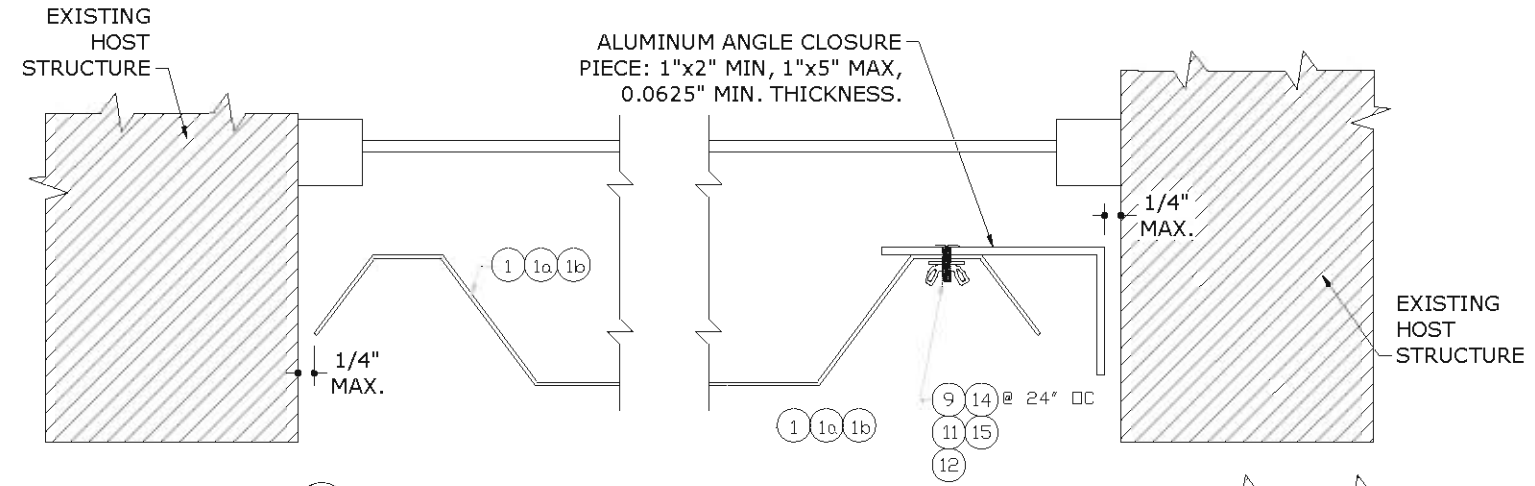
**ENGINEERING EXPRESS**  
CORPORATE OFFICE:  
160 SW 12th AVE, SUITE 106  
DEERFIELD BEACH, FL 33442  
(954) 354-0660 | (866) 396-9999  
TEAM@ENGINEERINGEXPRESS.COM  
ENGINEERINGEXPRESS.COM



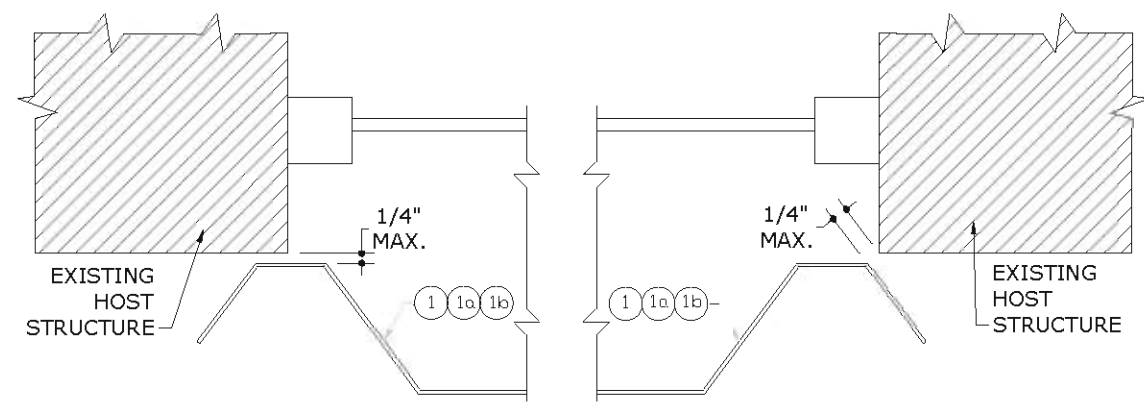
**P** STUD ANGLE THROUGH VENEER OVER STRUCTURAL BASE SECTION



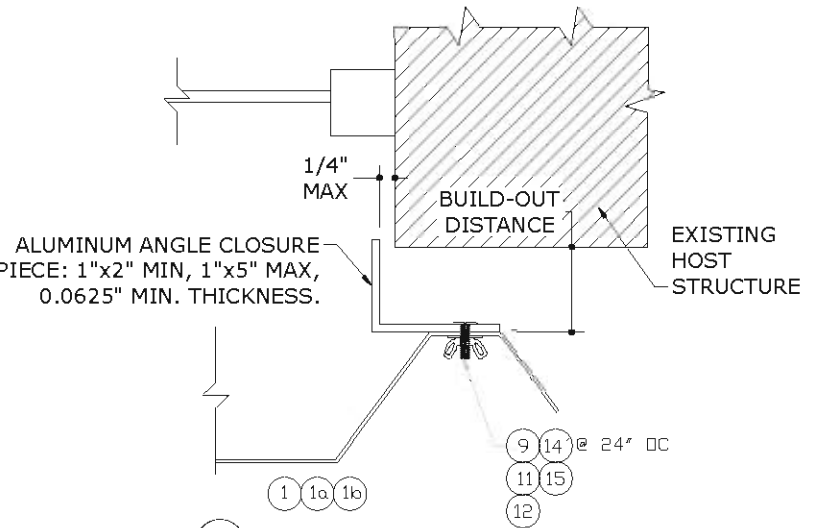
**Q** BUILD-OUT "F" TRACK THROUGH VENEER OVER STRUCTURAL BASE SECTION



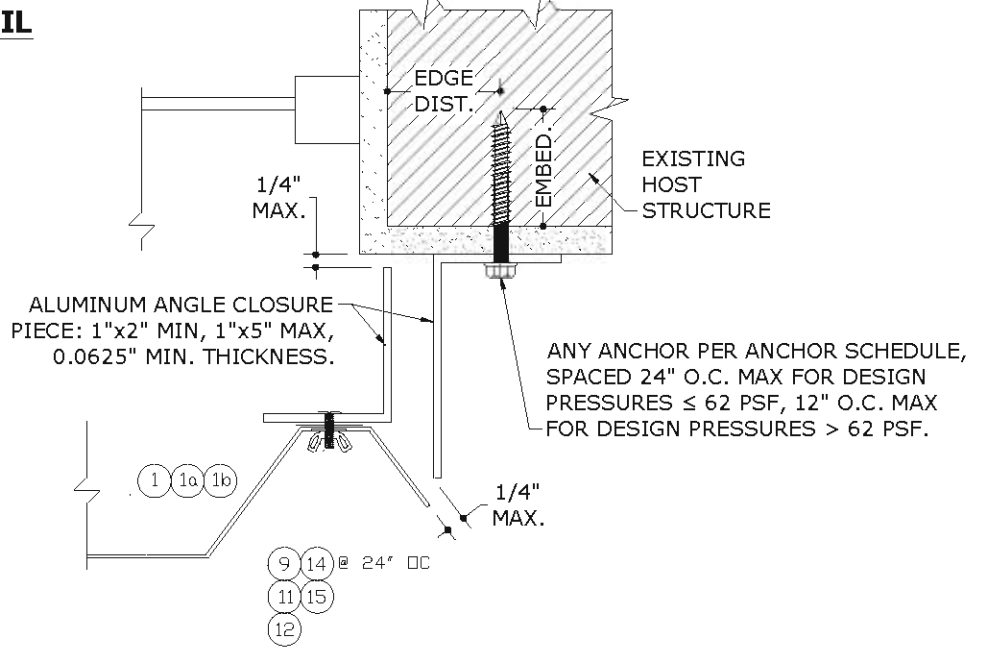
**R** TRAP MOUNT CLOSURE DETAIL



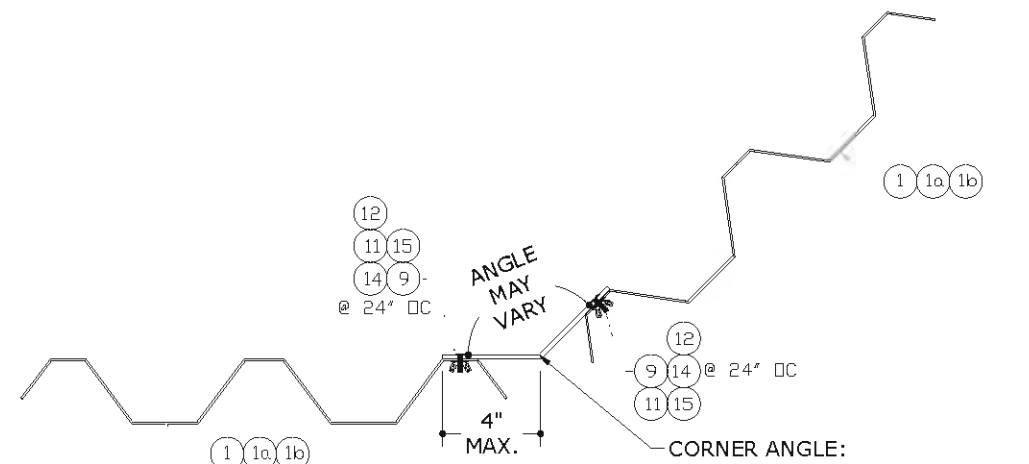
**S** WALL MOUNT CLOSURE DETAIL



**T** BUILD-OUT MOUNT CLOSURE DETAIL



**U** ALTERNATE CLOSURE DETAIL



**V** CORNER ANGLE DETAIL

**Town & Country INDUSTRIES**  
Wholesale Aluminum and Building Products  
A Division of AEC Supply Co., Inc.  
400 WEST MCNAB ROAD  
FT. LAUDERDALE, FL 33309  
FL12856.3

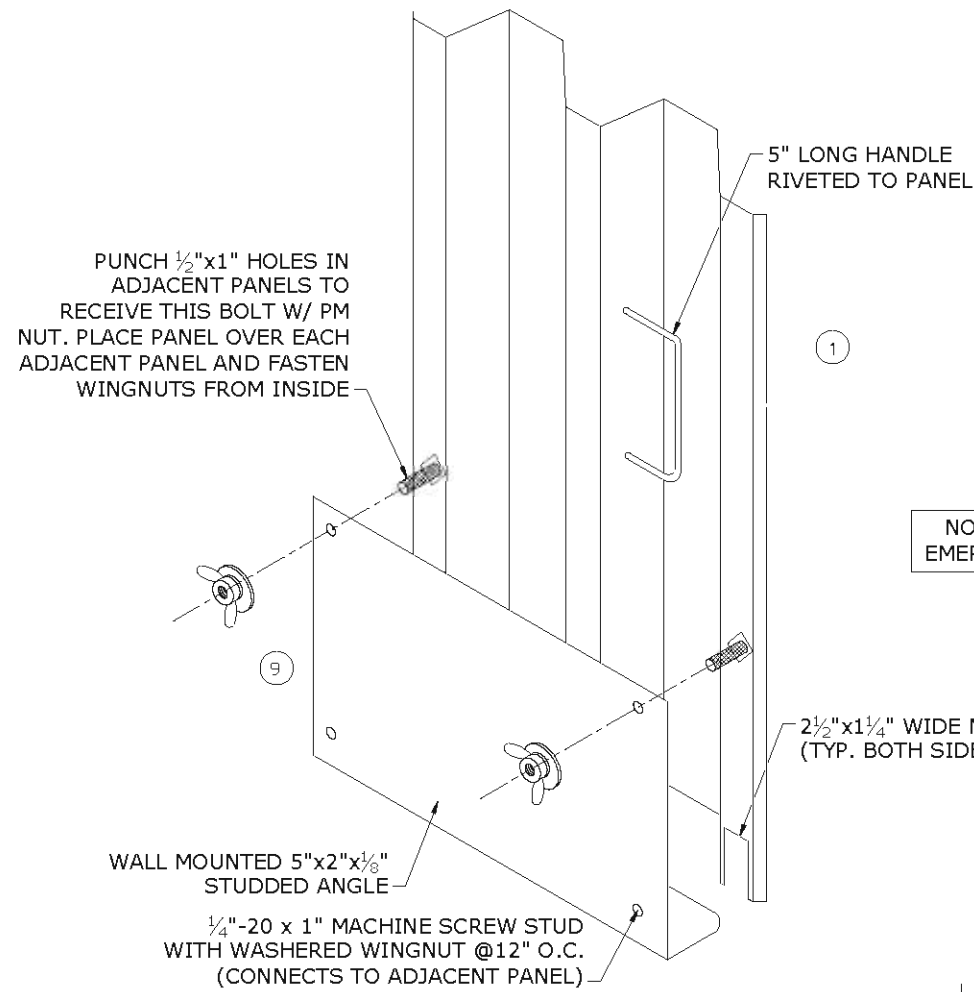
DRWN	CHKD	DATE
CSL	FLB	4/01/15
RWN	FLB	8/01/17
CCB	RWN	6/17/20

REMARKS  
INIT ISSUE  
2017 FBC  
2020 FBC

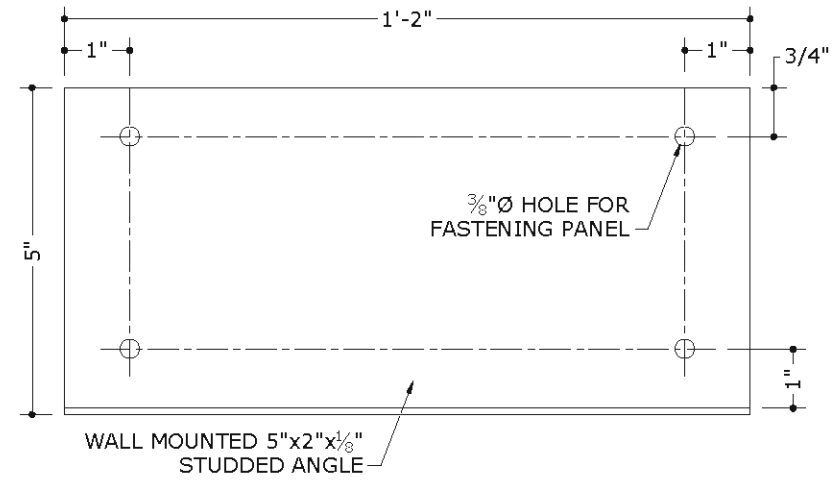
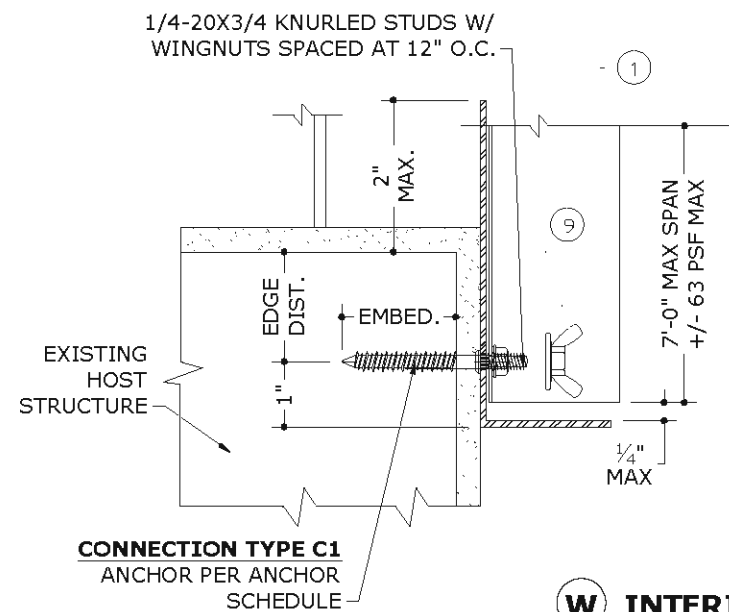
THIS DOCUMENT IS THE PROPERTY OF FRANK L. BENNARDO, P.E. AND SHALL NOT BE REPRODUCED, COPIED, OR TRANSMITTED IN ANY FORM OR BY ANY MEANS, ELECTRONIC OR MECHANICAL, INCLUDING PHOTOCOPYING, RECORDING, OR BY ANY INFORMATION STORAGE AND RETRIEVAL SYSTEM, WITHOUT THE WRITTEN PERMISSION OF FRANK L. BENNARDO, P.E. ANY ALTERATIONS, ADDITIONS, DELETIONS, OR OTHER MARKINGS TO THIS DOCUMENT ARE NOT PERMITTED AND INVALIDATE OUR CERTIFICATION.

COPYRIGHT FRANK L. BENNARDO P.E.  
**20-26152**  
SCALE: -  
PAGE DESCRIPTION: -

C:\Users\rickn\Engineering\Production - Documents\Projects\20-26152 - FL12856.3 - 24ga Steel Storm Panel\WP12020 FBC\20-26152c - FL12856.3 - DWG.dwg  
09/30/2020 - 2:32pm  
rickn



NOT FOR USE AS EMERGENCY ESCAPE



**W INTERIOR FASTENING ANGLE ASSEMBLY**

THESE DETAILS DEPICT THE CONNECTION OF ANY PANEL FOR AN OPENING WITH PANELS INSTALLED FROM INSIDE. USE OF THESE DETAILS SHALL BE IN CONJUNCTION WITH AN "H" HEADER OR "U" HEADER TOP MOUNT.

FRANK BENNARDO, PE  
PE# 0046549 CA#9885

**ENGINEERING EXPRESS**  
CORPORATE OFFICE:  
160 SW 12th AVE, SUITE 106  
DEERFIELD BEACH, FL 33442  
(954) 354-0660 | (866) 396-9999  
TEAM@ENGINEERINGEXPRESS.COM  
ENGINEERINGEXPRESS.COM

**Town & Country**  
INDUSTRIES  
Wholesale Aluminum and Building Products  
A Division of AEC Supply Co., Inc.

400 WEST MCNAB ROAD  
FT. LAUDERDALE, FL 33309

FL12856.3

REMARKS	DRWN	CHKD	DATE
INIT ISSUE	CSL	FLB	4/01/15
2017 FBC	RWN	FLB	8/01/17
2020 FBC	CCB	RWN	6/17/20

THIS DOCUMENT IS THE PROPERTY OF FRANK L. BENNARDO, P.E. AND SHALL NOT BE REPRODUCED, COPIED, OR TRANSMITTED IN ANY FORM OR BY ANY MEANS, ELECTRONIC OR MECHANICAL, INCLUDING PHOTOCOPYING, RECORDING, OR BY ANY INFORMATION STORAGE AND RETRIEVAL SYSTEM, WITHOUT THE WRITTEN PERMISSION OF FRANK L. BENNARDO, P.E. ANY ALTERATIONS, ADDITIONS, DELETIONS, OR OTHER MARKINGS TO THIS DOCUMENT ARE NOT PERMITTED AND INVALIDATE OUR CERTIFICATION.

COPYRIGHT FRANK L. BENNARDO P.E.

20-26152

SCALE: -

PAGE DESCRIPTION:

OF 10

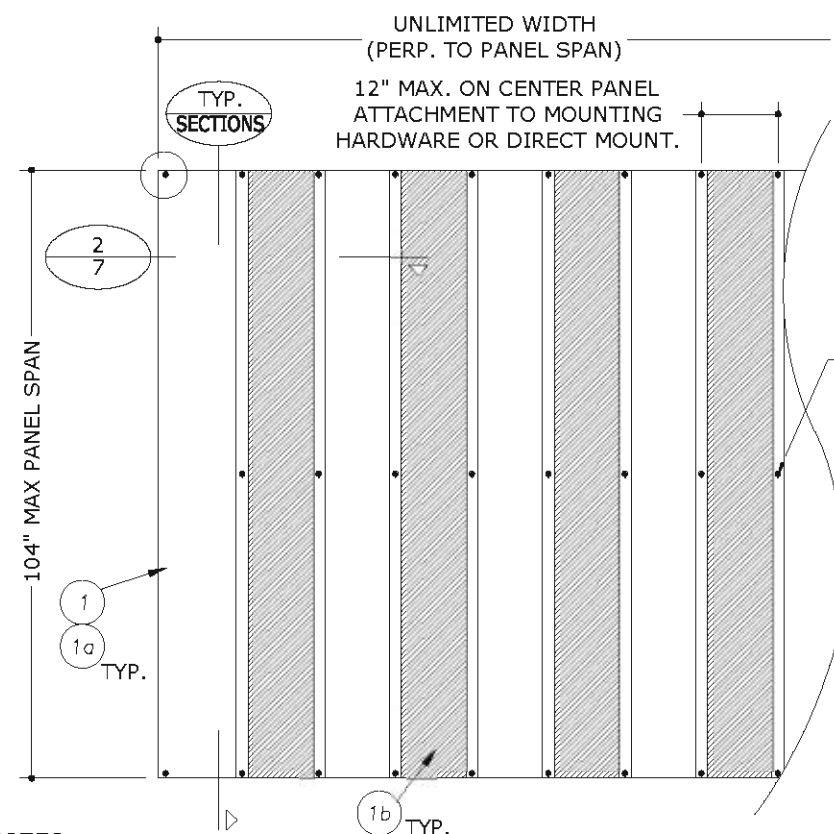






**ENGINEERING EXPRESS**  
CORPORATE OFFICE:  
160 SW 12th AVE, SUITE 106  
DEERFIELD BEACH, FL 33442  
(954) 354-0660 | (866) 396-9999  
TEAM@ENGINEERINGEXPRESS.COM  
ENGINEERINGEXPRESS.COM

**Town & Country INDUSTRIES**  
Wholesale Aluminum and Building Products  
A Division of AEC Supply Co., Inc.  
400 WEST MCNAB ROAD  
FT. LAUDERDALE, FL 33309  
FL12856.3



POLYCARBONATE PANELS FASTENED TO ADJACENT STORM PANELS WITH 1/4"-20 SIDEWALK BOLT AND WASHERED WINGUT AT MIDSPAN, TYPICAL.

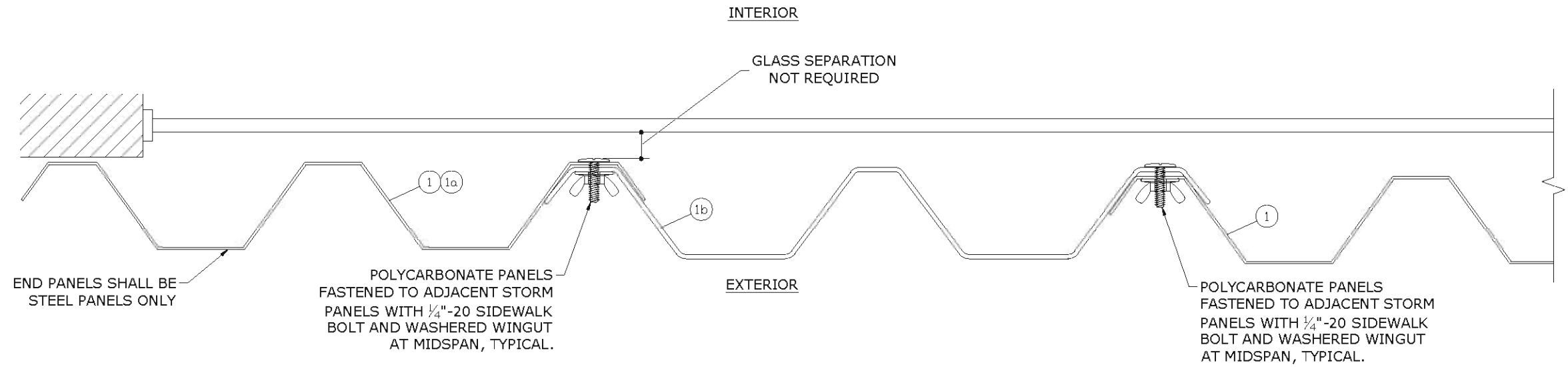
TABLE 2		
ALLOWABLE SPAN SCHEDULE (STEEL WITH POLYCARB PANELS)		
PANEL SPAN	ALLOWABLE DESIGN PRESSURE	
106"	+ 33.3 PSF	- 33.3 PSF
102"	+ 35.7 PSF	- 35.7 PSF
96"	+ 39.8 PSF	- 39.8 PSF
90"	+ 44.7 PSF	- 44.7 PSF
84"	+ 50.6 PSF	- 50.6 PSF
78"	+ 57.9 PSF	- 57.9 PSF
72"	+ 67.0 PSF	- 67.0 PSF

**TABLE 2 NOTES:**

- LINEAR INTERPOLATION BETWEEN SHUTTER SPANS IS NOT PERMITTED. FOR SPANS BETWEEN THOSE INDICATED ABOVE, THE DESIGN PRESSURES FOR THE NEXT HIGHER SPAN SHALL BE USED.
- DESIGN PRESSURES NOTED IN TABLE 2 APPLY TO ALL MOUNTING AND ANCHORAGE CONDITIONS AND SHALL NOT BE EXCEEDED.

- NOTES:**
1. TOP MAY BE SLOPED OR RADIUS TO MATCH GEOMETRY OF OPENING. MOUNTING HARDWARE MUST BE ROLL-FORMED TO THE RADIUS; NO NOTCHING OF MOUNTING HARDWARE TO ACHIEVE SHAPES IS ALLOWED.
  2. STORM PANELS MAY BE MOUNTED VERTICALLY OR HORIZONTALLY.
  3. STEEL AND POLYCARBONATE PANELS SHALL ALTERNATE.
  4. END PANELS SHALL BE STEEL PANELS ONLY.

**1**  
**7** TYPICAL ELEVATION WITH ALTERNATING STEEL AND POLYCARBONATE PANELS  
N.T.S. EXTERIOR ELEV



**2**  
**7** TYPICAL SECTION WITH ALTERNATING STEEL AND POLYCARBONATE PANELS  
N.T.S. HORIZ SECTION

REMARKS	DRWN	CHKD	DATE
INIT ISSUE	CSL	FLB	4/01/15
2017 FBC	RWN	FLB	8/01/17
2020 FBC	CCB	RWN	6/17/20

THIS DOCUMENT IS THE PROPERTY OF FRANK L. BENNARDO, P.E. AND SHALL NOT BE REPRODUCED, COPIED, OR TRANSMITTED IN ANY FORM OR BY ANY MEANS, ELECTRONIC OR MECHANICAL, INCLUDING PHOTOCOPYING, RECORDING, OR BY ANY INFORMATION STORAGE AND RETRIEVAL SYSTEM, WITHOUT THE WRITTEN PERMISSION OF FRANK L. BENNARDO, P.E. \*ALTERATIONS, ADDITIONS, DELETIONS, OR OTHER MARKINGS TO THIS DOCUMENT ARE NOT PERMITTED AND INVALIDATE OUR CERTIFICATION.

COPYRIGHT FRANK L. BENNARDO P.E.

20-26152

SCALE: -

PAGE DESCRIPTION:

7 OF 10





# ANCHOR SCHEDULES (CONTINUED):

HOST STRUCT.	ANCHOR	LOAD (psf)	EDGE DISTANCES AS NOTED														
			Spans Up To 6'-0"					Spans Up To 8'-0"					Spans Up To 10'-0"				
			CONN TYPE					CONN TYPE					CONN TYPE				
C1	C2	C3	C4	C5	C1	C2	C3	C4	C5	C1	C2	C3	C4	C5			
HOLLOW CONCRETE BLOCK	1/4" ITW S.S. TAPCON WITH 1-1/4" MIN. EMBED AND 2-1/2" MIN. EDGE DISTANCE	35	14.6"	14.6"	14.6"	9.1"	14.6"	11.0"	11.0"	11.0"	6.8"	11.0"	8.8"	8.8"	8.8"	5.5"	8.8"
		46	11.1"	11.1"	11.1"	6.9"	11.1"	8.3"	8.3"	8.3"	5.2"	8.3"	6.7"	5.5"	6.7"	4.0"	5.1"
		57	9.0"	9.0"	9.0"	5.6"	9.0"	6.7"	5.6"	6.7"	4.0"	5.2"	5.4"	3.8"	5.4"	3.1"	3.2"
		67	7.6"	7.1"	7.6"	4.6"	7.5"	5.7"	4.2"	5.7"	3.3"	3.6"	4.6"		4.6"		
		78	6.6"	5.3"	6.6"	3.9"	4.9"	4.9"	3.3"	4.9"			3.9"		3.9"		
		89	5.8"	4.2"	5.8"	3.3"	3.6"	4.3"		4.3"			3.5"		3.5"		
		100	5.1"	3.5"	5.1"			3.8"		3.8"			3.1"				
		35	16.0"	16.0"	16.0"	8.3"	16.0"	12.0"	12.0"	12.0"	6.2"	12.0"	9.6"	9.6"	9.6"	5.0"	9.6"
		46	12.2"	12.2"	12.2"	6.3"	12.2"	9.1"	9.1"	9.1"	4.7"	9.1"	7.3"	6.0"	7.3"		5.6"
		57	9.8"	9.8"	9.8"	5.1"	9.8"	7.4"	6.1"	7.4"		5.7"	5.9"	4.2"	5.9"		
67	8.4"	7.8"	8.4"	4.2"	8.2"	6.3"	4.6"	6.3"			5.0"		5.0"				
78	7.2"	5.8"	7.2"		5.3"			5.4"			4.3"		4.3"				
89	6.3"	4.6"	6.3"			4.7"		4.7"									
100	5.6"		5.6"			4.2"		4.2"									
HOLLOW CONCRETE BLOCK	1/4" DEWALT ULTRACON WITH 1-1/4" MIN. EMBED AND 2-1/2" MIN. EDGE DISTANCE	35	16.0"	16.0"	16.0"	11.7"	16.0"	16.0"	16.0"	8.8"	16.0"	14.4"	14.4"	14.4"	7.0"	14.4"	
		46	16.0"	16.0"	16.0"	8.9"	16.0"	13.7"	13.7"	13.7"	6.6"	13.7"	11.0"	9.0"	11.0"	5.1"	8.4"
		57	14.7"	14.7"	14.7"	7.2"	14.7"	11.1"	9.1"	11.1"	5.2"	8.6"	8.8"	6.3"	8.8"	4.0"	5.2"
		67	12.5"	11.6"	12.5"	6.0"	12.4"	9.4"	6.9"	9.4"	4.3"	5.9"	7.5"	4.9"	7.5"		
		78	10.8"	8.7"	10.8"	5.0"	8.0"	8.1"	5.5"	8.1"		4.4"	6.5"		6.5"		
		89	9.4"	7.0"	9.4"	4.3"	5.9"	7.1"	4.5"	7.1"			5.7"		5.7"		
		100	8.4"	5.8"	8.4"		4.7"	6.3"		6.3"			5.0"		4.9"		
		35	16.0"	16.0"	16.0"	15.9"	16.0"	16.0"	16.0"	16.0"	11.9"	16.0"	16.0"	16.0"	16.0"	9.6"	16.0"
		46	16.0"	16.0"	16.0"	12.1"	16.0"	16.0"	16.0"	16.0"	9.1"	16.0"	16.0"	16.0"	16.0"	7.1"	15.5"
		57	16.0"	16.0"	16.0"	9.8"	16.0"	16.0"	16.0"	16.0"	7.1"	15.8"	16.0"	11.6"	16.0"	5.6"	9.6"
67	16.0"	16.0"	16.0"	8.2"	16.0"	16.0"	12.8"	16.0"	6.0"	10.9"	13.9"	9.1"	13.9"	4.7"	7.1"		
78	16.0"	16.0"	16.0"	6.9"	14.8"	14.9"	10.1"	14.9"	5.1"	8.1"	11.9"	7.3"	11.9"	4.0"	5.6"		
89	16.0"	12.8"	16.0"	6.0"	11.0"	13.1"	8.3"	13.1"	4.4"	6.4"	10.5"	6.2"	10.5"	3.5"	4.6"		
100	15.5"	10.7"	15.5"	5.3"	8.7"	11.6"	7.1"	11.6"	3.9"	5.4"	9.3"	5.3"	9.0"	3.1"	3.9"		
HOLLOW CONCRETE BLOCK	1/4-20 ALL POINTS SOLID-SET WITH 7/8" MIN EMBED AND 2" MIN. EDGE DISTANCE	35	16.0"	16.0"	16.0"	13.4"	16.0"	16.0"	16.0"	10.1"	16.0"	16.0"	16.0"	8.1"	16.0"		
		46	16.0"	16.0"	16.0"	10.2"	16.0"	16.0"	16.0"	7.6"	16.0"	14.9"	12.2"	14.9"	5.9"	11.4"	
		57	16.0"	16.0"	16.0"	8.2"	16.0"	15.1"	12.4"	15.1"	6.0"	11.7"	12.1"	8.5"	12.1"	4.7"	7.1"
		67	16.0"	15.9"	16.0"	6.9"	16.0"	12.8"	9.4"	12.8"	5.0"	8.0"	10.3"	6.7"	10.3"	3.9"	5.3"
		78	14.7"	11.9"	14.7"	5.8"	10.9"	11.0"	7.4"	11.0"	4.3"	6.0"	8.8"	5.4"	8.8"	3.4"	4.1"
		89	12.9"	9.5"	12.9"	5.0"	8.1"	9.7"	6.1"	9.7"	3.7"	4.8"	7.7"	4.5"	7.7"		3.4"
		100	11.5"	7.9"	11.5"	4.4"	6.4"	8.6"	5.2"	8.6"	3.3"	4.0"	6.9"	3.9"	6.7"		
		35	15.4"	15.4"	15.4"	6.6"	15.4"	11.5"	11.5"	11.5"	5.0"	11.5"	9.2"	9.2"	9.2"		9.2"
		46	11.7"	11.7"	11.7"	5.1"	11.7"	8.8"	8.8"	8.8"		8.8"	7.0"	5.7"	7.0"		5.4"
		57	9.4"	9.4"	9.4"	4.1"	9.4"	7.1"	5.8"	7.1"		5.5"	5.7"	4.0"	5.7"		
67	8.0"	7.5"	8.0"		7.9"	6.0"	4.4"	6.0"		4.8"	4.8"		4.8"				
78	6.9"	5.6"	6.9"		5.1"	5.2"		5.2"		4.1"	4.1"		4.1"				
89	6.0"	4.4"	6.0"			4.5"		4.5"									
100	5.4"		5.4"			4.0"		4.0"									
HOLLOW CONCRETE BLOCK	1/4" MILLENNIUM MILLFAST ANCHOR W/ 1-1/4" EMBED AND 2-1/2" EDGE DISTANCE	35	16.0"	16.0"	16.0"	10.0"	16.0"	12.7"	12.7"	12.7"	7.5"	12.7"	10.1"	10.1"	10.1"	6.0"	10.1"
		46	12.9"	12.9"	12.9"	7.6"	12.9"	9.7"	9.7"	9.7"	5.7"	9.7"	7.7"	6.3"	7.7"	4.4"	5.9"
		57	10.4"	10.4"	10.4"	6.2"	10.4"	7.8"	6.4"	7.8"	4.4"	6.0"	6.2"	4.4"	6.2"		
		67	8.8"	8.2"	8.8"	5.1"	8.7"	6.6"	4.9"	6.6"		4.1"	5.3"		5.3"		
		78	7.6"	6.1"	7.6"	4.3"	5.6"	5.7"		5.7"			4.6"		4.6"		
		89	6.7"	4.9"	6.7"		4.2"	5.0"		5.0"							
		100	5.9"	4.1"	5.9"			4.4"		4.4"							
		35	16.0"	16.0"	16.0"	12.2"	16.0"	16.0"	16.0"	16.0"	9.2"	16.0"	15.8"	15.8"	15.8"	7.3"	15.8"
		46	16.0"	16.0"	16.0"	9.3"	16.0"	15.0"	15.0"	15.0"	6.9"	15.0"	12.0"	9.8"	12.0"	5.4"	9.2"
		57	16.0"	16.0"	16.0"	7.5"	16.0"	12.1"	10.0"	12.1"	5.4"	9.4"	9.7"	6.9"	9.7"	4.2"	5.7"
67	13.7"	12.8"	13.7"	6.3"	13.5"	10.3"	7.6"	10.3"	4.5"	6.5"	8.2"	5.4"	8.2"	3.6"	4.2"		
78	11.8"	9.5"	11.8"	5.3"	8.8"	8.9"	6.0"	8.9"	3.8"	4.8"	7.1"	4.3"	7.1"	3.0"	3.3"		
89	10.3"	7.6"	10.3"	4.6"	6.5"	7.8"	4.9"	7.8"	3.3"	3.8"	6.2"	3.6"	6.2"				
100	9.2"	6.3"	9.2"	4.0"	5.2"	6.9"	4.2"	6.9"		3.2"	5.5"	3.1"	5.4"				
HOLLOW CONCRETE BLOCK	1/4" EA MALE BOLT, 1-1/4" EMBED AND 1.25" EDGE DISTANCE	35	16.0"	16.0"	16.0"	16.0"	16.0"	16.0"	16.0"	13.4"	16.0"	16.0"	16.0"	16.0"	10.7"	16.0"	
		46	16.0"	16.0"	16.0"	13.6"	16.0"	16.0"	16.0"	10.2"	16.0"	16.0"	15.6"	16.0"	7.9"	14.5"	
		57	16.0"	16.0"	16.0"	11.0"	16.0"	16.0"	15.8"	16.0"	8.0"	14.8"	15.3"	10.8"	15.3"	6.2"	9.0"
		67	16.0"	16.0"	16.0"	9.2"	16.0"	16.0"	12.0"	16.0"	6.7"	10.2"	13.0"	8.5"	13.0"	5.2"	6.7"
		78	16.0"	15.1"	16.0"	7.7"	13.9"	14.0"	9.4"	14.0"	5.6"	7.6"	11.2"	6.9"	11.2"	4.4"	5.2"
		89	16.0"	12.0"	16.0"	6.7"	10.3"	12.3"	7.8"	12.3"	4.9"	6.0"	9.8"	5.8"	9.8"		4.3"
		100	14.6"	10.0"	14.6"	5.9"	8.2"	10.9"	6.6"	10.9"	4.3"	5.0"	8.7"	5.0"	8.5"		

HOST STRUCT.	ANCHOR	LOAD (psf)	EDGE DISTANCES AS NOTED														
			Spans Up To 6'-0"					Spans Up To 8'-0"					Spans Up To 10'-0"				
			CONN TYPE					CONN TYPE					CONN TYPE				
C1	C2	C3	C4	C5	C1	C2	C3	C4	C5	C1	C2	C3	C4	C5			
HOLLOW CONCRETE BLOCK	1/4" ITW S.S. TAPCON WITH 1-1/4" MIN. EMBED AND 1" MIN. EDGE DISTANCE	35	10.7"	10.7"	10.7"	4.8"	10.7"	8.0"	8.0"	8.0"	3.6"	8.0"	6.4"	6.4"	6.4"	6.4"	
		46	8.1"	8.1"	8.1"	3.6"	8.1"	6.1"	6.1"	6.1"		6.1"	4.9"	4.0"	4.9"	3.7"	
		57	6.6"	6.6"	6.6"		6.6"	4.9"	4.1"	4.9"		3.8"	3.9"		3.9"		
		67	5.6"	5.2"	5.6"		5.5"	4.2"	3.1"	4.2"			3.4"		3.4"		
		78	4.8"	3.9"	4.8"		3.6"	3.6"		3.6"							
		89	4.2"	3.1"	4.2"			3.2"		3.2"							
		100	3.7"		3.7"												
		35	16.0"	16.0"	16.0"	8.9"	16.0"	12.0"	12.0"	12.0"	6.7"	12.0"	9.6"	9.6"	9.6"	5.4"	9.6"
		46	12.2"	12.2"	12.2"	6.8"	12.2"	9.1"	9.1"	9.1"	5.1"	9.1"	7.3"	6.0"	7.3"		5.6"
		57	9.8"	9.8"	9.8"	5.5"	9.8"	7.4"	6.1"	7.4"		5.7"	5.9"	4.2"	5.9"		
67	8.4"	7.8"	8.4"	4.6"	8.2"	6.3"	4.6"	6.3"			5.0"		5.0"				
78	7.2"	5.8"	7.2"		5.3"	5.4"		5.4"			4.3"		4.3"				
89	6.3"	4.6"	6.3"			4.7"		4.7"									
100	5.6"		5.6"			4.2"		4.2"									
HOLLOW CONCRETE BLOCK	1/4" DEWALT PANELMATE (MALE OR PLUS) W/ 1-1/4" MIN EMBED AND 2" MIN. EDGE DISTANCE	35	16.0"	16.0"	16.0"	12.3"	16.0"	16.0"	16.0"	9.2"	16.0"	15.0"	15.0"	15.0"	7.4"	15.0"	
		46	16.0"	16.0"	16.0"	9.4"	16.0"	14.2"	14.2"	14.2"	7.0"	14.2"	11.4"	9.3"	11.4"	5.4"	8.7"
		57	15.3"	15.3"	15.3"	7.5"	15.3"	11.5"	9.5"	11.5"	5.5"	8.9"	9.2"	6.5"	9.2"	4.3"	5.4"
		67	13.0"	12.1"	13.0"	6.3"	12.8"	9.8"	7.2"	9.8"		4.6"	6.1"	7.8"	5.1"	7.8"	4.0"
		78	11.2"	9.0"	11.2"	5.3"	8.3"	8.4"	5.7"	8.4"		4.6"	6.7"	4.1"	6.7"		
		89	9.8"	7.2"	9.8"	4.6"	6.2"	7.4"	4.7"	7.4"			5.9"		5.9"		
		100	8.7"	6.0"	8.7"	4.0"	4.9"	6.5"		6.5"			5.2"		5.1"		
		35	16.0"	16.0"	16.0"	9.6"	16.0"	16.0"	16.0"	16.0"	7.2"	16.0"	16.0"	16.0"	16.0"	5.8"	16.0"
		46	16.0"	16.0"	16.0"	7.3"	16.0"	16.0"	16.0"	16.0"	5.5"	16.0"	16.0"	16.0"	16.0"	4.3"	15.5"
		57	16.0"	16.0"	16.0"	5.9"	16.0"	16.0"	16.0"	16.0"	4.4"	15.8"	16.0"	11.6"	16.0"	3.4"	9.6"
67	16.0"	16.0"	16.0"	5.0"	16.0"	16.0"	12.8"	16.0"	3.7"	10.9"	13.9"	9.1"	13.9"	7.1"			
78	16.0"	16.0"	16.0"	4.2"	14.8"	14.9"	10.1"	14.9"	3.1"	8.1"	11.9"	7.					



