

REVISIONS			
REV	DESCRIPTION	DATE	APPROVED
A	REVISED PER NEW REQUIREMENTS	12/08/17	R.L.

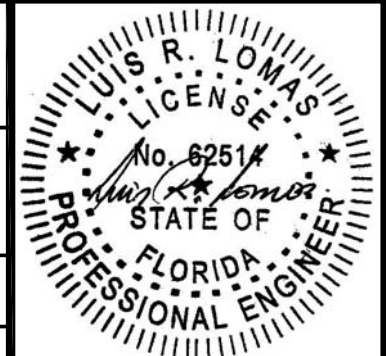
NOTES:

- 1) THE PRODUCT SHOWN HEREIN IS DESIGNED AND MANUFACTURED TO COMPLY WITH REQUIREMENTS OF THE FLORIDA BUILDING CODE INCLUDING THE HVHZ.
- 2) WOOD FRAMING AND MASONRY OPENING TO BE DESIGNED AND ANCHORED TO PROPERLY TRANSFER ALL LOADS TO STRUCTURE. WOOD FRAMING AND MASONRY OPENING IS THE RESPONSIBILITY OF THE ARCHITECT OR ENGINEER OF RECORD.
- 3) 1X BUCK OVER MASONRY/CONCRETE IS OPTIONAL. WHERE 1X BUCK IS NOT USED DISSIMILAR MATERIALS MUST BE SEPARATED WITH APPROVED COATING OR MEMBRANE. SELECTION OF COATING OR MEMBRANE IS THE RESPONSIBILITY OF THE ARCHITECT OR ENGINEER OF RECORD.
- 4) APPROVED IMPACT PROTECTIVE SYSTEM IS NOT REQUIRED FOR THIS PRODUCT IN WIND BORNE DEBRIS REGIONS.
- 5) UNITS MUST BE GLAZED PER ASTM E1300-04/09. SEE SHEET 3 FOR GLAZING DETAILS.
- 6) ALLOWABLE STRESS INCREASE OF 1/3 WAS NOT USED IN THE DESIGN OF THE PRODUCT SHOWN HEREIN. WIND LOAD DURATION FACTOR Cd=1.6 WAS USED FOR WOOD ANCHOR CALCULATIONS.
- 7) SHIM AS REQUIRED AT EACH INSTALLATION ANCHOR WITH LOAD BEARING SHIM. SHIM WHERE SPACE OF 1/16" OR GREATER OCCURS. MAXIMUM ALLOWABLE SHIM STACK TO BE 1/4".
- 8) FOR ANCHORING INTO 2X BUCK OR WOOD FRAMING USE #8 WOOD SCREW OF SUFFICIENT LENGTH TO ACHIEVE A 1 1/4" MINIMUM EMBEDMENT INTO SUBSTRATE. LOCATE ANCHORS AS SHOWN IN ANCHORING LAYOUT AND INSTALLATION DETAILS.
- 9) FOR ANCHORING INTO MASONRY/CONCRETE USE 3/16" ITW TAPCON OF SUFFICIENT LENGTH TO ACHIEVE A 1 1/4" MINIMUM EMBEDMENT INTO SUBSTRATE WITH 2" MINIMUM EDGE DISTANCE. LOCATE ANCHORS AS SHOWN IN ANCHORING LAYOUT AND INSTALLATION DETAILS.
- 10) ALL FASTENERS TO BE CORROSION RESISTANT.
- 11) INSTALLATION ANCHOR CAPACITIES FOR PRODUCTS HEREIN ARE BASED ON SUBSTRATE MATERIAL WITH THE FOLLOWING PROPERTIES:
 - A. WOOD - G=0.42 MINIMUM SPECIFIC GRAVITY
 - B. CONCRETE - 2,000 PSI MINIMUM COMPRESSIVE STRENGTH.
 - C. MASONRY - STRENGTH CONFORMANCE TO ASTM C-90, GRADE N, TYPE 1 (OR GREATER).
- 12) FRAME MATERIAL: WOOD WITH G=.46 MINIMUM SPECIFIC GRAVITY.

SIGNED: 12/08/2017

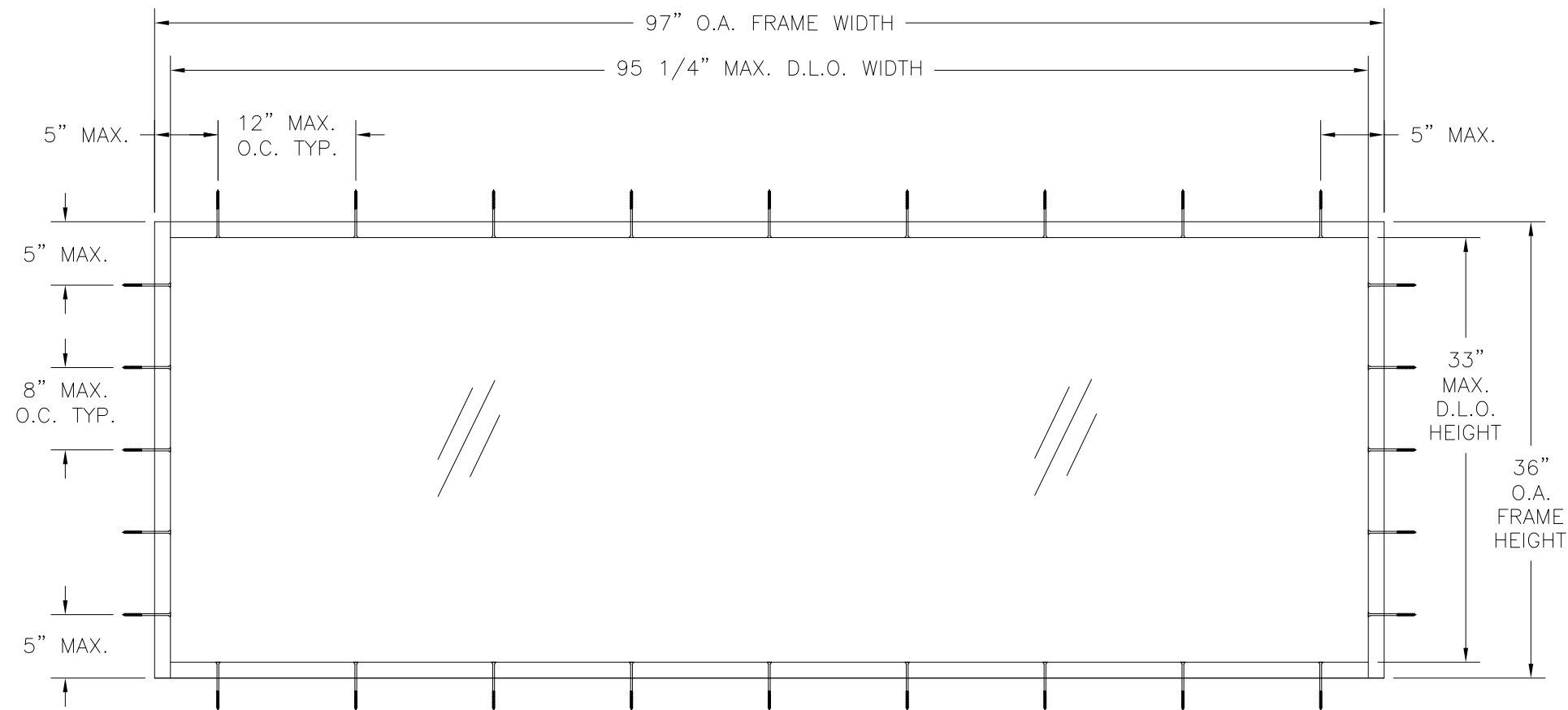
TABLE OF CONTENTS	
SHEET NO.	DESCRIPTION
1	NOTES
2	ELEVATION AND ANCHORING LAYOUT
3	COMPONENTS AND GLAZING DETAILS
4 - 5	INSTALLATION DETAILS

PROVIA DOOR, INC. 2150 STATE ROUTE 39 WEST SUGARCREEK, OH 44681		
FIXED WOOD TRANSOM 97" X 36" - IMPACT NOTES		
DRAWN: TJH	DWG NO. 08-01026	REV A
SCALE NTS	DATE 08/03/10	SHEET 1 OF 5
L. ROBERTO LOMAS P.E. 1432 WOODFORD RD LEWISVILLE, NC 27023 434-688-0609 rllomas@lrllomaspe.com		



Luis R. Lomas P.E.
FL No.: 62514

REVISIONS			
REV	DESCRIPTION	DATE	APPROVED
A	REVISED PER NEW REQUIREMENTS	12/08/17	R.L.



FIXED WOOD TRANSOM
EXTERIOR VIEW

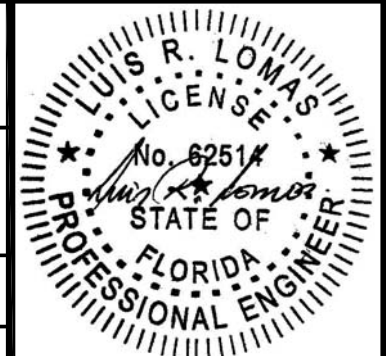
DESIGN PRESSURE RATING	IMPACT RATING
±51.0PSF	LARGE AND SMALL MISSILE IMPACT

MISSILE LEVEL D, WIND ZONE 4 AND HVHZ

97" X 36" UNIT SHOWN. OTHER SIZES APPROVED AS LONG AS FRAME AREA DOES NOT EXCEED 24 1/4" FT²

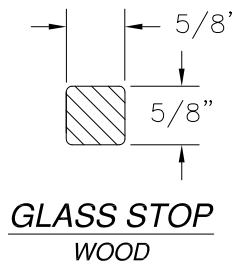
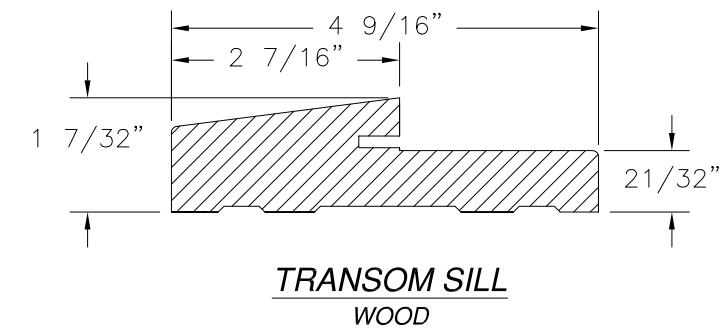
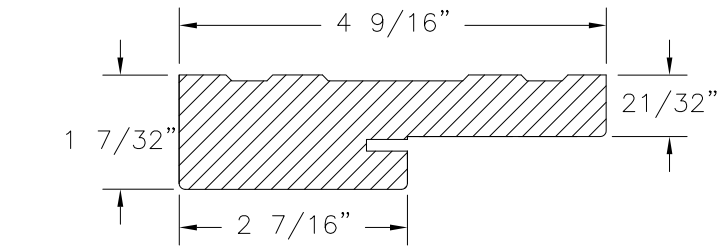
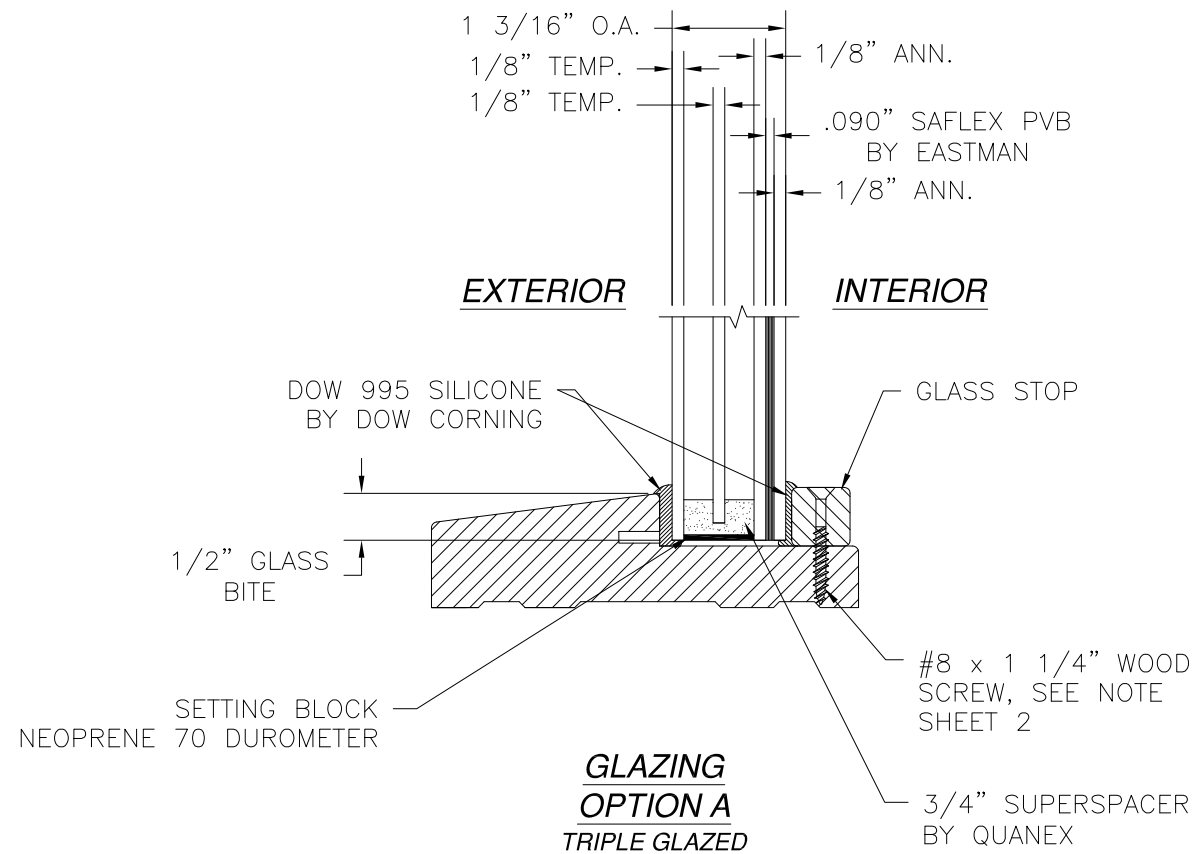
SIGNED: 12/08/2017

PROVIA DOOR, INC. 2150 STATE ROUTE 39 WEST SUGARCREEK, OH 44681		
FIXED WOOD TRANSOM 97" X 36" - IMPACT ELEVATION AND ANCHORING LAYOUT		
DRAWN: TJH	DWG NO. 08-01026	REV A
SCALE NTS	DATE 08/03/10	SHEET 2 OF 5
L. ROBERTO LOMAS P.E. 1432 WOODFORD RD LEWISVILLE, NC 27023 434-688-0609 rllomas@lrlomaspe.com		

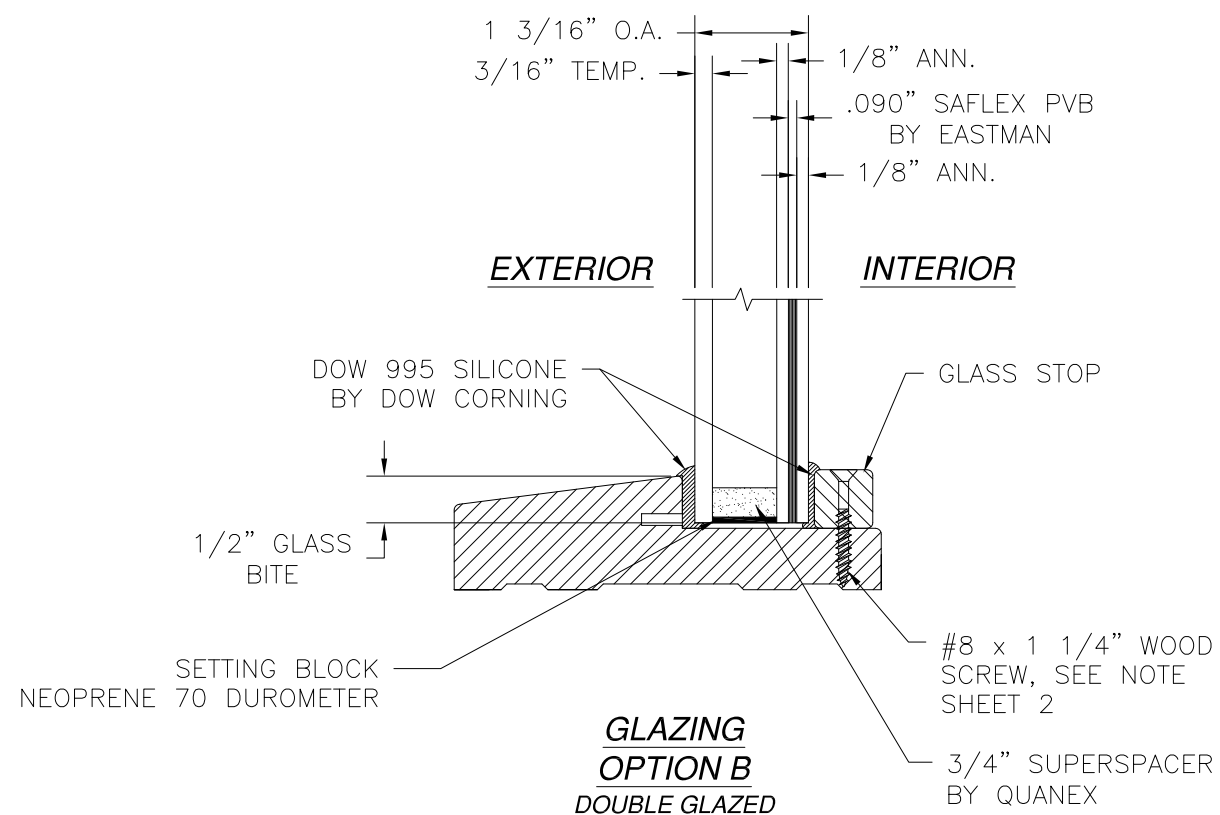


Luis R. Lomas P.E.
FL No.: 62514

REVISIONS			
REV	DESCRIPTION	DATE	APPROVED
A	REVISED PER NEW REQUIREMENTS	12/08/17	R.L.

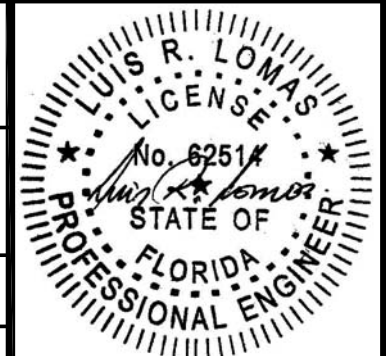


NOTE:
GLAZING STOP IS SECURED TO FRAME JAMBS WITH #8 x 1 1/4" WOOD SCREWS SPACED 6" MAXIMUM O.C. GLAZING STOP IS SECURED TO FRAME HEAD AND SILL WITH #8 x 1 1/4" WOOD SCREWS SPACED 7 1/2" MAXIMUM O.C.



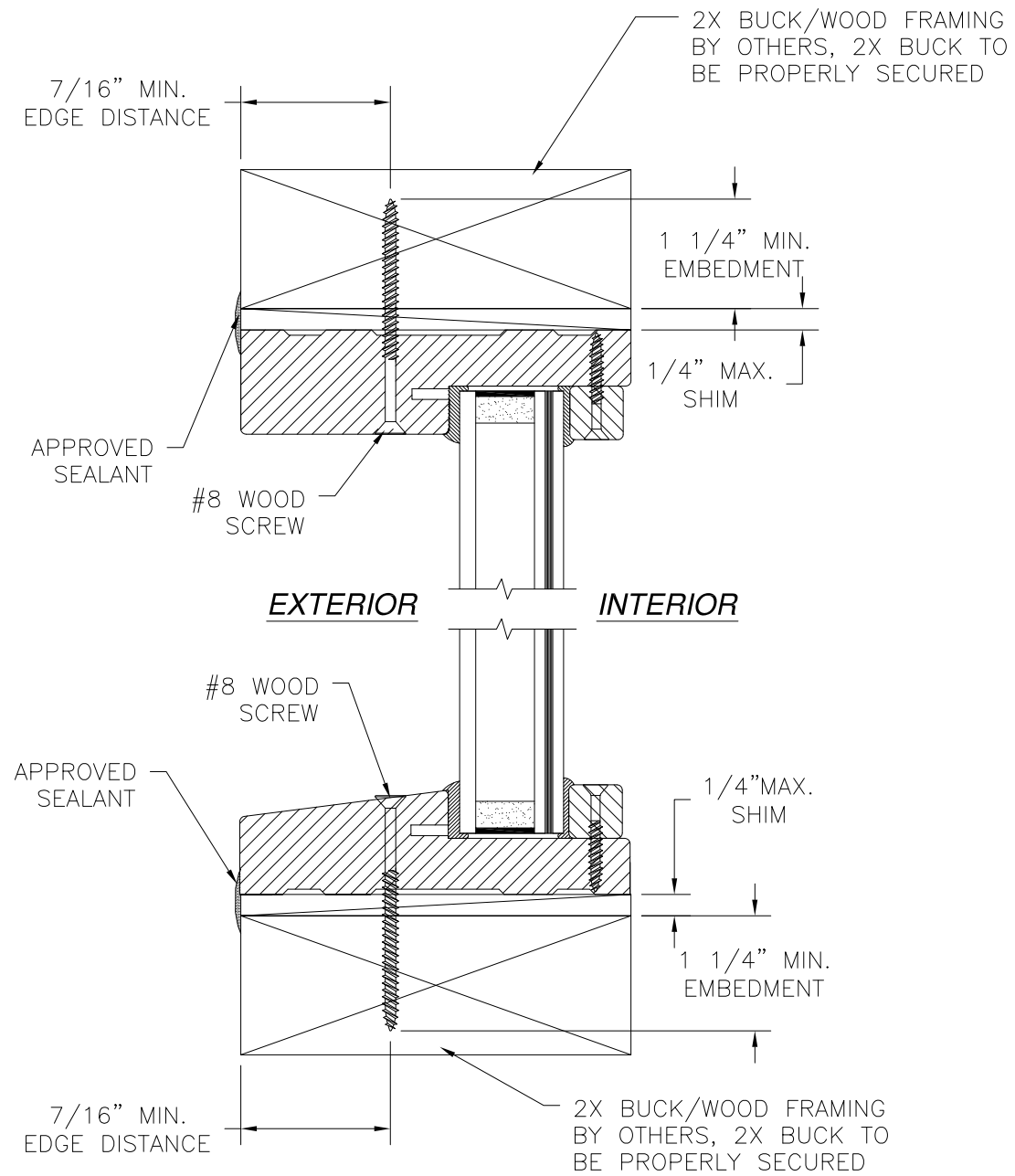
SIGNED: 12/08/2017

PROVIA DOOR, INC. 2150 STATE ROUTE 39 WEST SUGARCREEK, OH 44681		
FIXED WOOD TRANSOM 97" X 36" - IMPACT COMPONENTS AND GLAZING DETAILS		
DRAWN: TJH	DWG NO. 08-01026	REV A
SCALE NTS	DATE 08/03/10	SHEET 3 OF 5
L. ROBERTO LOMAS P.E. 1432 WOODFORD RD LEWISVILLE, NC 27023 434-688-0609 rllomas@lrlomaspe.com		

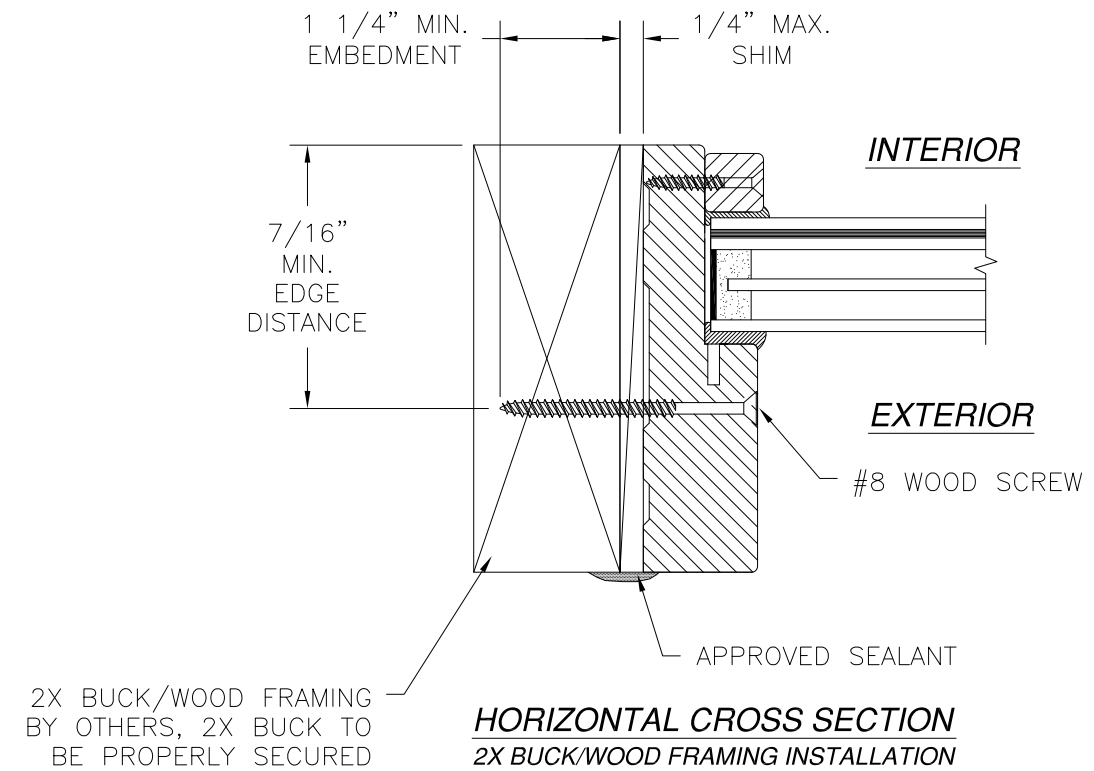


Luis R. Lomas P.E.
FL No.: 62514

REVISIONS			
REV	DESCRIPTION	DATE	APPROVED
A	REVISED PER NEW REQUIREMENTS	12/08/17	R.L.



VERTICAL CROSS SECTION
2X BUCK/WOOD FRAMING INSTALLATION

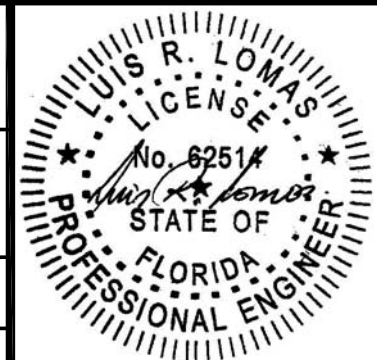


HORIZONTAL CROSS SECTION
2X BUCK/WOOD FRAMING INSTALLATION

- NOTES:**
1. INTERIOR AND EXTERIOR FINISHES, BY OTHERS, NOT SHOWN FOR CLARITY.
 2. PERIMETER AND JOINT SEALANT BY OTHERS TO BE DESIGNED IN ACCORDANCE WITH ASTM E2112

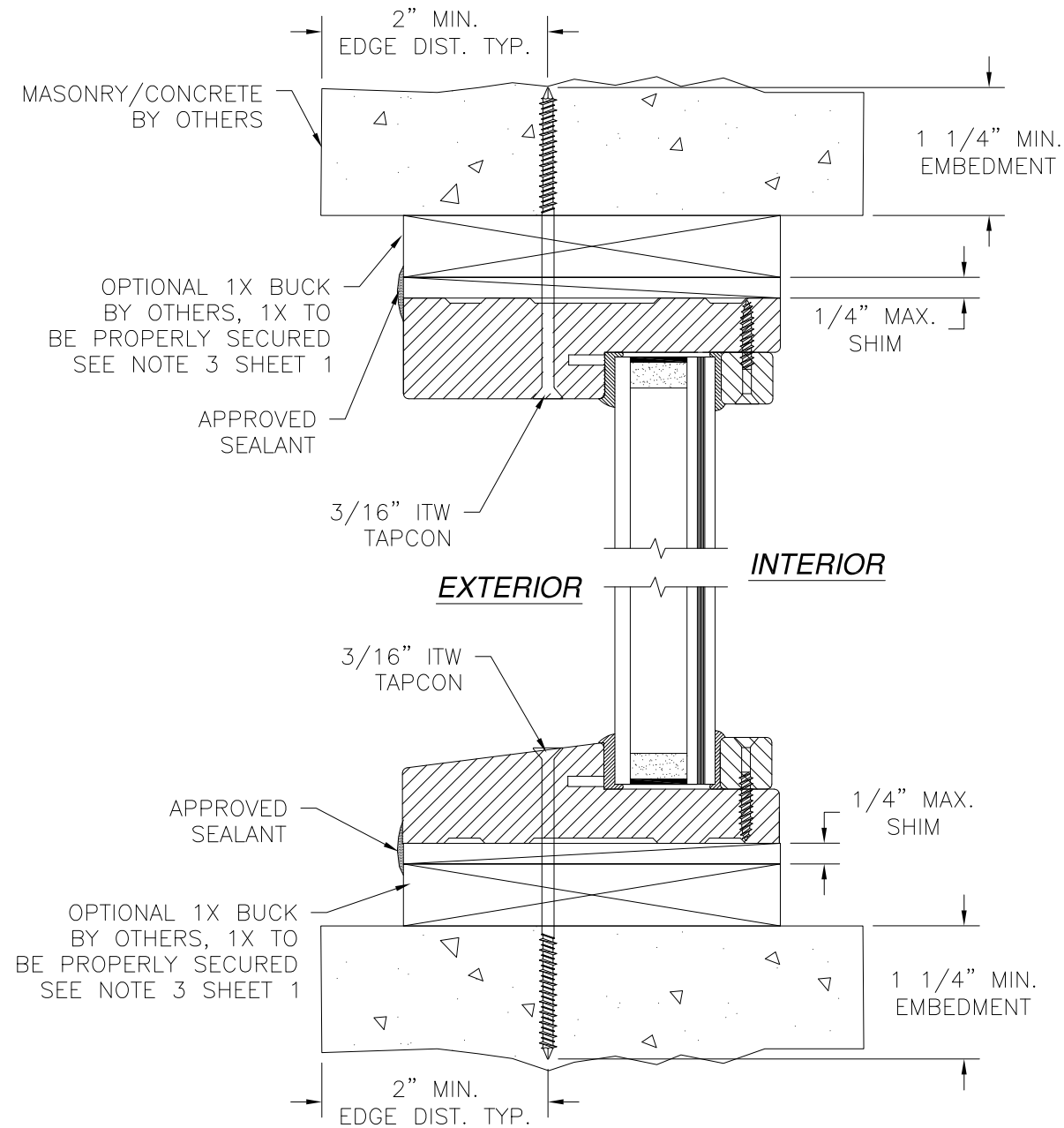
SIGNED: 12/08/2017

PROVIA DOOR, INC. 2150 STATE ROUTE 39 WEST SUGARCREEK, OH 44681		
FIXED WOOD TRANSOM 97" X 36" - IMPACT INSTALLATION DETAILS		
DRAWN: TJH	DWG NO. 08-01026	REV A
SCALE NTS	DATE 08/03/10	SHEET 4 OF 5
L. ROBERTO LOMAS P.E. 1432 WOODFORD RD LEWISVILLE, NC 27023 434-688-0609 rllomas@lrlomaspe.com		

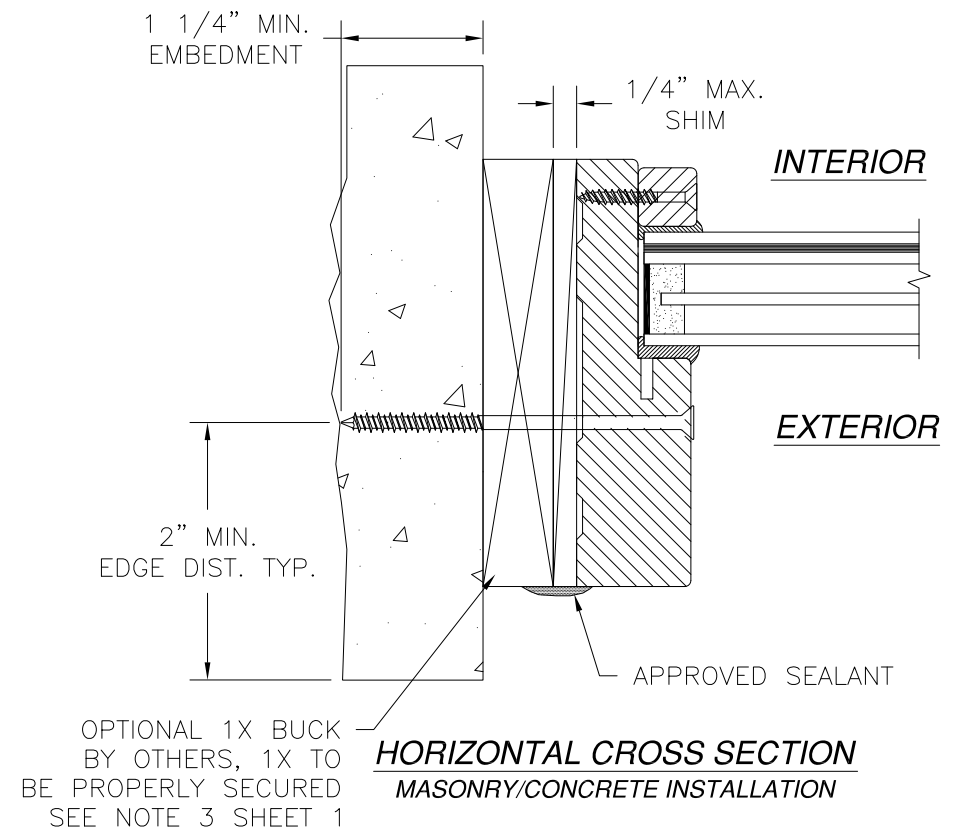


Luis R. Lomas P.E.
FL No.: 62514

REVISIONS			
REV	DESCRIPTION	DATE	APPROVED
A	REVISED PER NEW REQUIREMENTS	12/08/17	R.L.



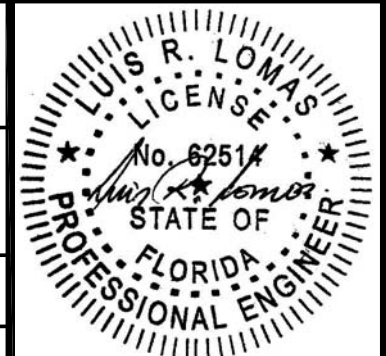
VERTICAL CROSS SECTION
MASONRY/CONCRETE INSTALLATION



- NOTES:**
1. INTERIOR AND EXTERIOR FINISHES, BY OTHERS, NOT SHOWN FOR CLARITY.
 2. PERIMETER AND JOINT SEALANT BY OTHERS TO BE DESIGNED IN ACCORDANCE WITH ASTM E2112

SIGNED: 12/08/2017

PRO VIA DOOR, INC. 2150 STATE ROUTE 39 WEST SUGARCREEK, OH 44681		
FIXED WOOD TRANSOM 97" X 36" - IMPACT INSTALLATION DETAILS		
DRAWN: TJH	DWG NO. 08-01026	REV A
SCALE NTS	DATE 08/03/10	SHEET 5 OF 5
L. ROBERTO LOMAS P.E. 1432 WOODFORD RD LEWISVILLE, NC 27023 434-688-0609 rllomas@lrlomaspe.com		



Luis R. Lomas P.E.
FL No.: 62514