

| REVISIONS | | | |
|-----------|------------------------------|----------|----------|
| REV | DESCRIPTION | DATE | APPROVED |
| B | REVISED PER NEW REQUIREMENTS | 12/08/17 | R.L. |

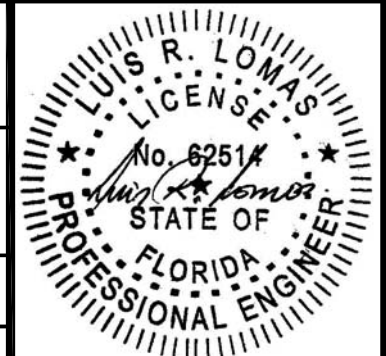
NOTES:

- 1) THE PRODUCT SHOWN HEREIN IS DESIGNED AND MANUFACTURED TO COMPLY WITH REQUIREMENTS OF THE FLORIDA BUILDING CODE INCLUDING THE HVHZ.
- 2) WOOD FRAMING AND MASONRY OPENING TO BE DESIGNED AND ANCHORED TO PROPERLY TRANSFER ALL LOADS TO STRUCTURE. WOOD FRAMING AND MASONRY OPENING IS THE RESPONSIBILITY OF THE ARCHITECT OR ENGINEER OF RECORD.
- 3) 1X BUCK OVER MASONRY/CONCRETE IS OPTIONAL. WHERE 1X BUCK IS NOT USED DISSIMILAR MATERIALS MUST BE SEPARATED WITH APPROVED COATING OR MEMBRANE. SELECTION OF COATING OR MEMBRANE IS THE RESPONSIBILITY OF THE ARCHITECT OR ENGINEER OF RECORD.
- 4) APPROVED IMPACT PROTECTIVE SYSTEM IS REQUIRED FOR THIS PRODUCT IN WIND BORNE DEBRIS REGIONS.
- 5) UNITS MUST BE GLAZED PER ASTM E1300-04/09. SEE SHEET 2 FOR GLAZING DETAIL.
- 6) ALLOWABLE STRESS INCREASE OF 1/3 WAS NOT USED IN THE DESIGN OF THE PRODUCT SHOWN HEREIN. WIND LOAD DURATION FACTOR Cd=1.6 WAS USED FOR WOOD ANCHOR CALCULATIONS.
- 7) SHIM AS REQUIRED AT EACH INSTALLATION ANCHOR WITH LOAD BEARING SHIM. SHIM WHERE SPACE OF 1/16" OR GREATER OCCURS. MAXIMUM ALLOWABLE SHIM STACK TO BE 1/4".
- 8) FOR ANCHORING INTO 2X BUCK OR WOOD FRAMING USE #8 WOOD SCREW OF SUFFICIENT LENGTH TO ACHIEVE A 1 1/4" MINIMUM EMBEDMENT INTO SUBSTRATE. LOCATE ANCHORS AS SHOWN IN ANCHORING LAYOUT AND INSTALLATION DETAILS.
- 9) FOR ANCHORING INTO MASONRY/CONCRETE USE 3/16" ITW TAPCON OF SUFFICIENT LENGTH TO ACHIEVE A 1 1/4" MINIMUM EMBEDMENT INTO SUBSTRATE WITH 2" MINIMUM EDGE DISTANCE. LOCATE ANCHORS AS SHOWN IN ANCHORING LAYOUT AND INSTALLATION DETAILS.
- 10) ALL FASTENERS TO BE CORROSION RESISTANT.
- 11) INSTALLATION ANCHOR CAPACITIES FOR PRODUCTS HEREIN ARE BASED ON SUBSTRATE MATERIAL WITH THE FOLLOWING PROPERTIES:
 - A. WOOD - G=0.42 MINIMUM SPECIFIC GRAVITY
 - B. CONCRETE - 2,000 PSI MINIMUM COMPRESSIVE STRENGTH.
 - C. MASONRY - STRENGTH CONFORMANCE TO ASTM C-90, GRADE N, TYPE 1 (OR GREATER).
- 12) FRAME MATERIAL: WOOD WITH G=.46 MINIMUM SPECIFIC GRAVITY.
- 13) GLAZING STOP IS SECURED TO FRAME JAMBS WITH #8 x 1 1/4" WOOD SCREWS SPACED 6" MAXIMUM O.C. GLAZING STOP IS SECURED TO FRAME HEAD AND SILL WITH #8 x 1 1/4" WOOD SCREWS SPACED 7 1/2" MAXIMUM O.C.

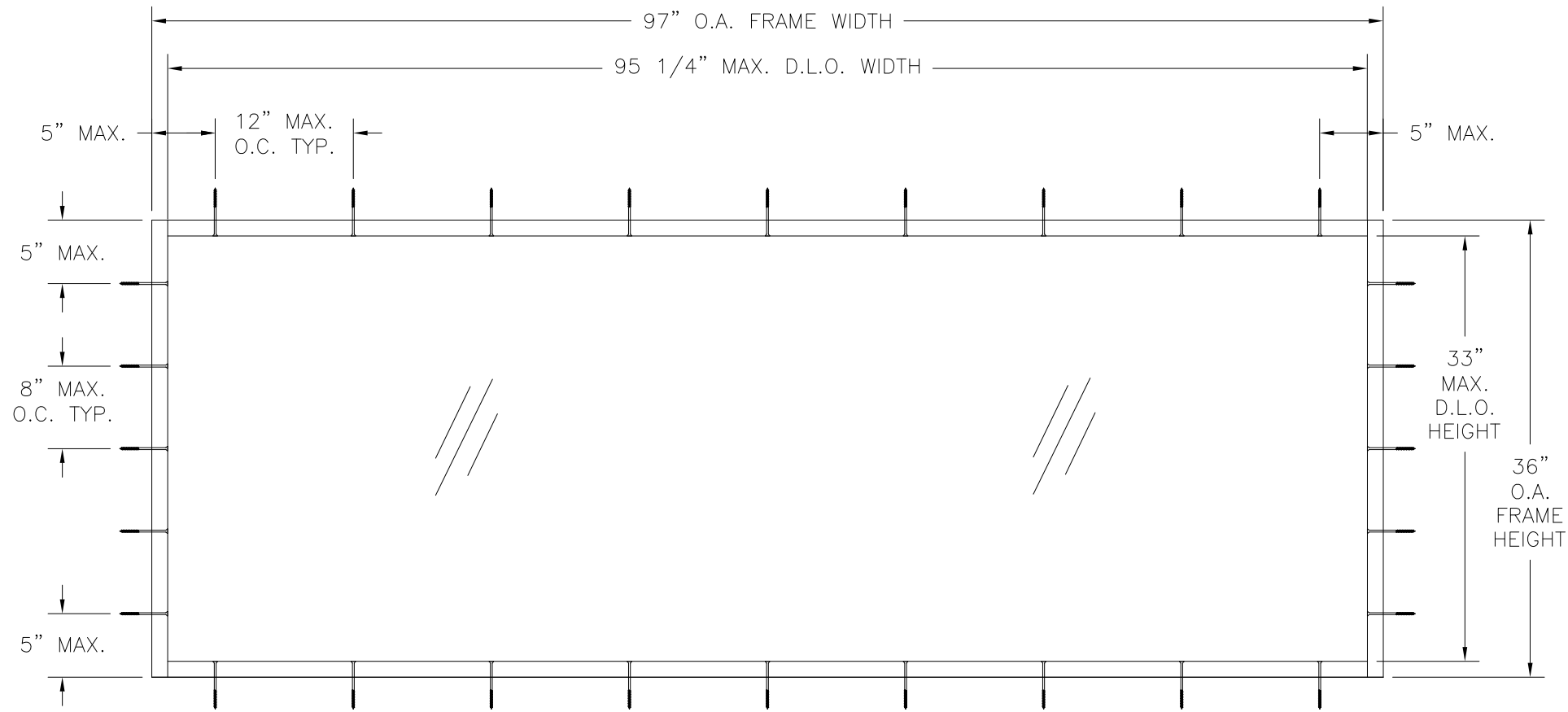
| TABLE OF CONTENTS | |
|-------------------|--|
| SHEET NO. | DESCRIPTION |
| 1 | NOTES |
| 2 | ELEVATION, ANCHORING LAYOUT AND COMPONENTS |
| 3 - 4 | INSTALLATION DETAILS |

| | | |
|---|---------------------|--------------|
| PROVIA DOOR, INC. 2150 STATE ROUTE 39 WEST SUGARCREEK, OH 44681 | | |
| FIXED WOOD TRANSOM 97" X 36" - NON-IMPACT NOTES | | |
| DRAWN: TJH | DWG NO. 08-01087 | REV B |
| SCALE NTS | DATE 08/11/10 | SHEET 1 OF 4 |
| L. ROBERTO LOMAS P.E. 1432 WOODFORD RD LEWISVILLE, NC 27023 434-688-0609 rllomas@rlomaspe.com | | |

SIGNED: 12/08/2017



Luis R. Lomas P.E.
FL No.: 62514

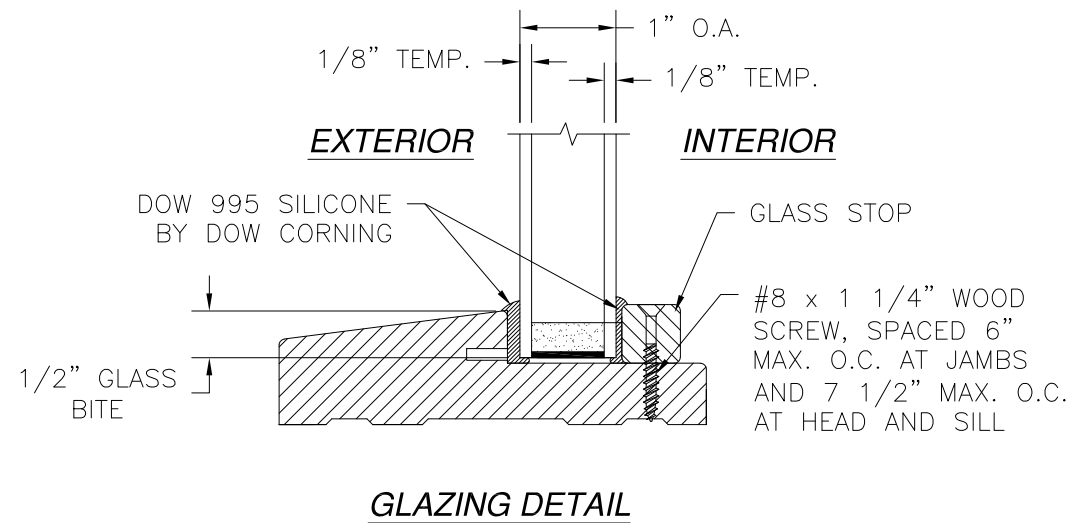
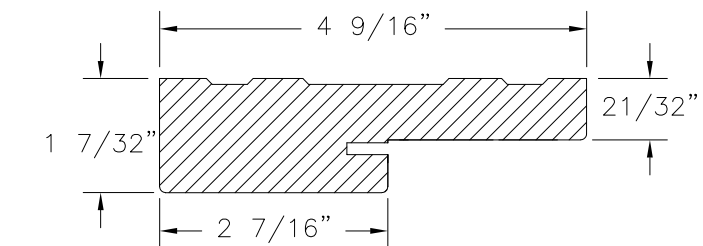
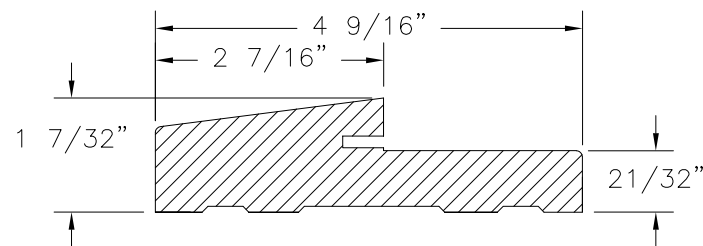
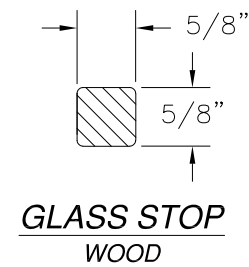


| REVISIONS | | | |
|-----------|------------------------------|----------|----------|
| REV | DESCRIPTION | DATE | APPROVED |
| B | REVISED PER NEW REQUIREMENTS | 12/08/17 | R.L. |

FIXED WOOD TRANSOM
EXTERIOR VIEW

| DESIGN PRESSURE RATING | IMPACT RATING |
|------------------------|---------------|
| ±65PSF | NONE |

97" X 36" UNIT SHOWN. OTHER SIZES APPROVED AS LONG AS FRAME AREA DOES NOT EXCEED 24 1/4" FT²



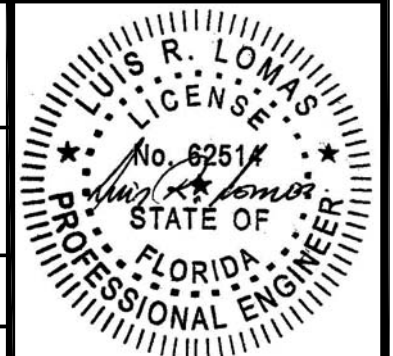
SIGNED: 12/08/2017

PROVIA DOOR, INC.
2150 STATE ROUTE 39 WEST
SUGARCREEK, OH 44681

FIXED WOOD TRANSOM
97" X 36" - NON-IMPACT
ELEVATION, ANCHORING LAYOUT AND COMPONENTS

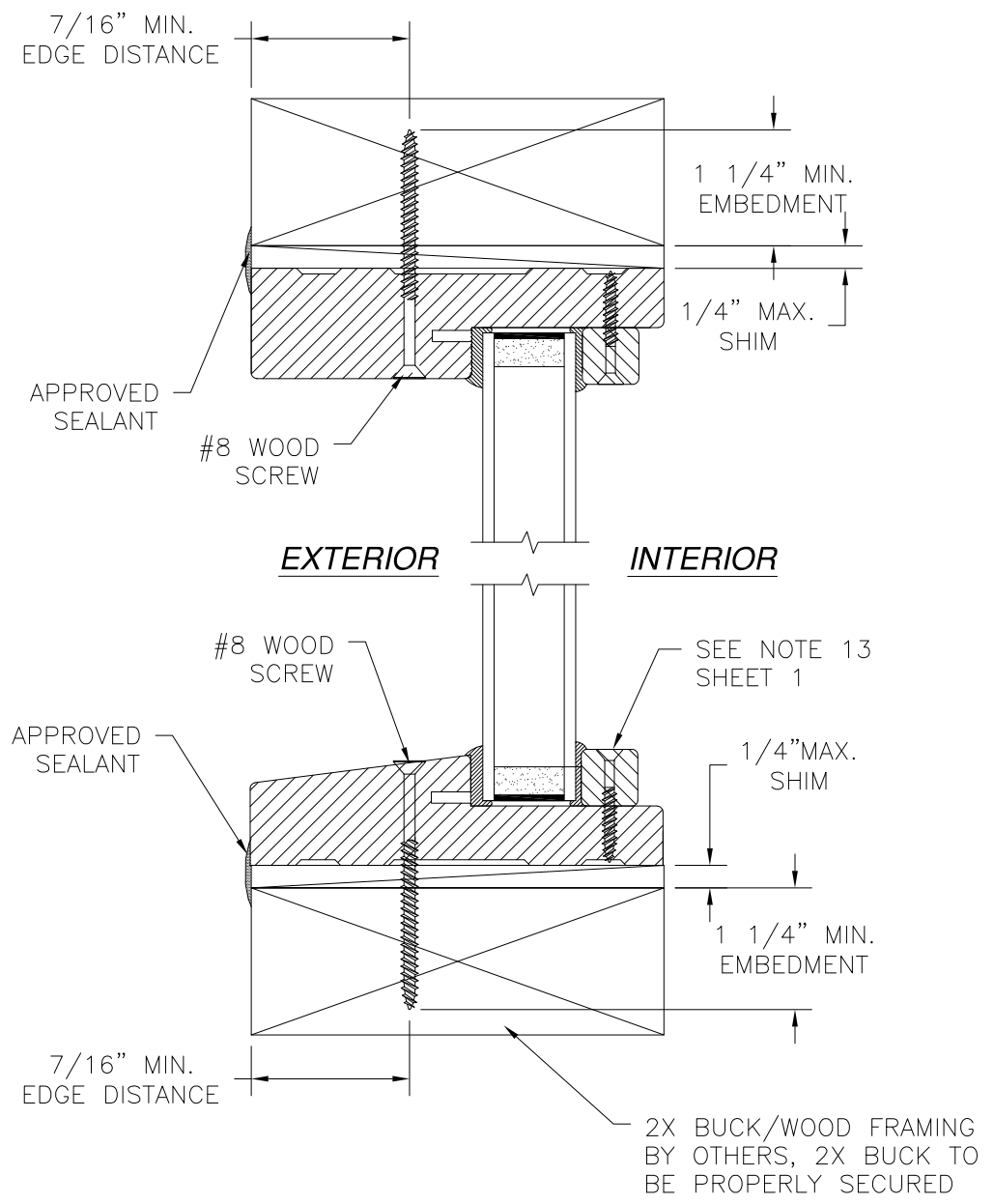
| | | |
|---------------|---------------------|--------------|
| DRAWN: TJH | DWG NO. 08-01087 | REV B |
| SCALE NTS | DATE 08/11/10 | SHEET 2 OF 4 |

L. ROBERTO LOMAS P.E.
1432 WOODFORD RD LEWISVILLE, NC 27023
434-688-0609 rllomas@rlomaspe.com

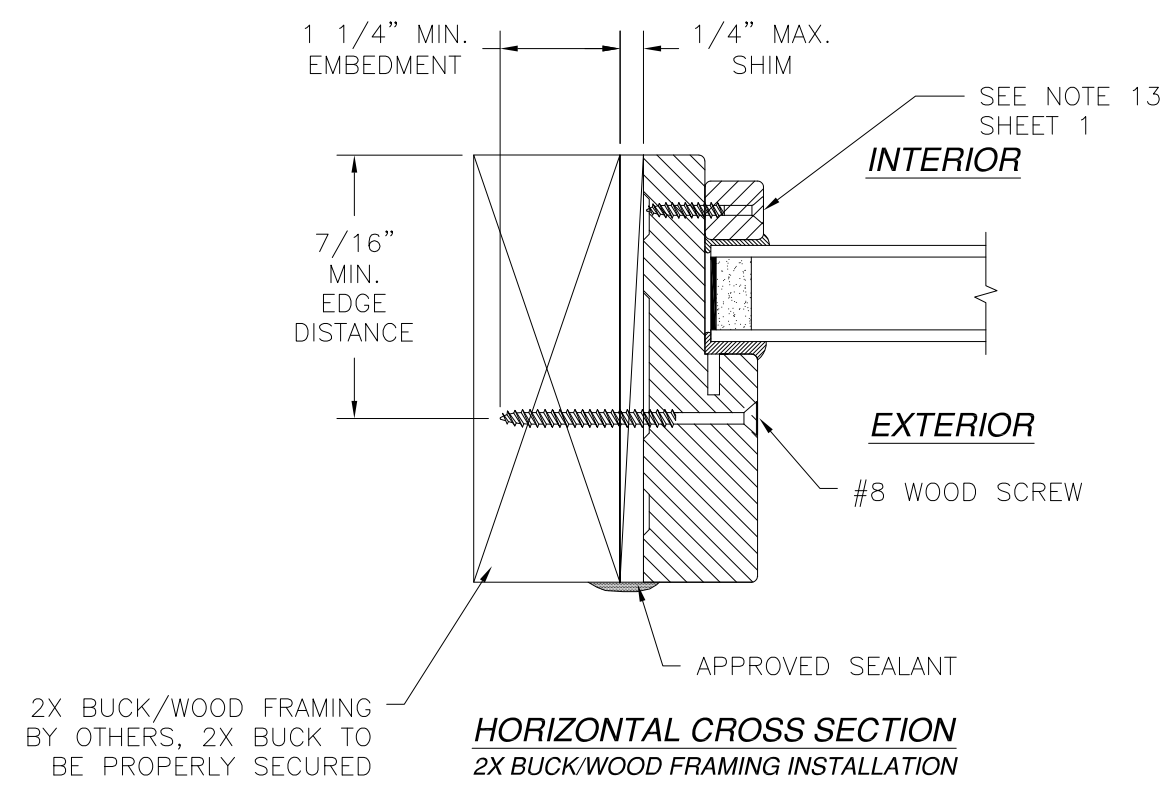


Luis R. Lomas P.E.
FL No.: 62514

| REVISIONS | | | |
|-----------|------------------------------|----------|----------|
| REV | DESCRIPTION | DATE | APPROVED |
| B | REVISED PER NEW REQUIREMENTS | 12/08/17 | R.L. |



VERTICAL CROSS SECTION
2X BUCK/WOOD FRAMING INSTALLATION

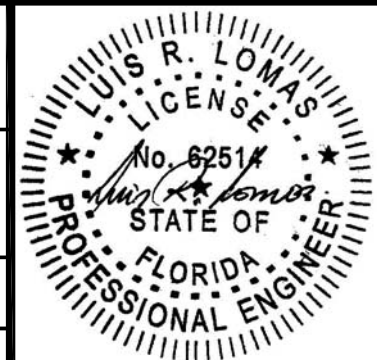


HORIZONTAL CROSS SECTION
2X BUCK/WOOD FRAMING INSTALLATION

- NOTES:**
1. INTERIOR AND EXTERIOR FINISHES, BY OTHERS, NOT SHOWN FOR CLARITY.
 2. PERIMETER AND JOINT SEALANT BY OTHERS TO BE DESIGNED IN ACCORDANCE WITH ASTM E2112

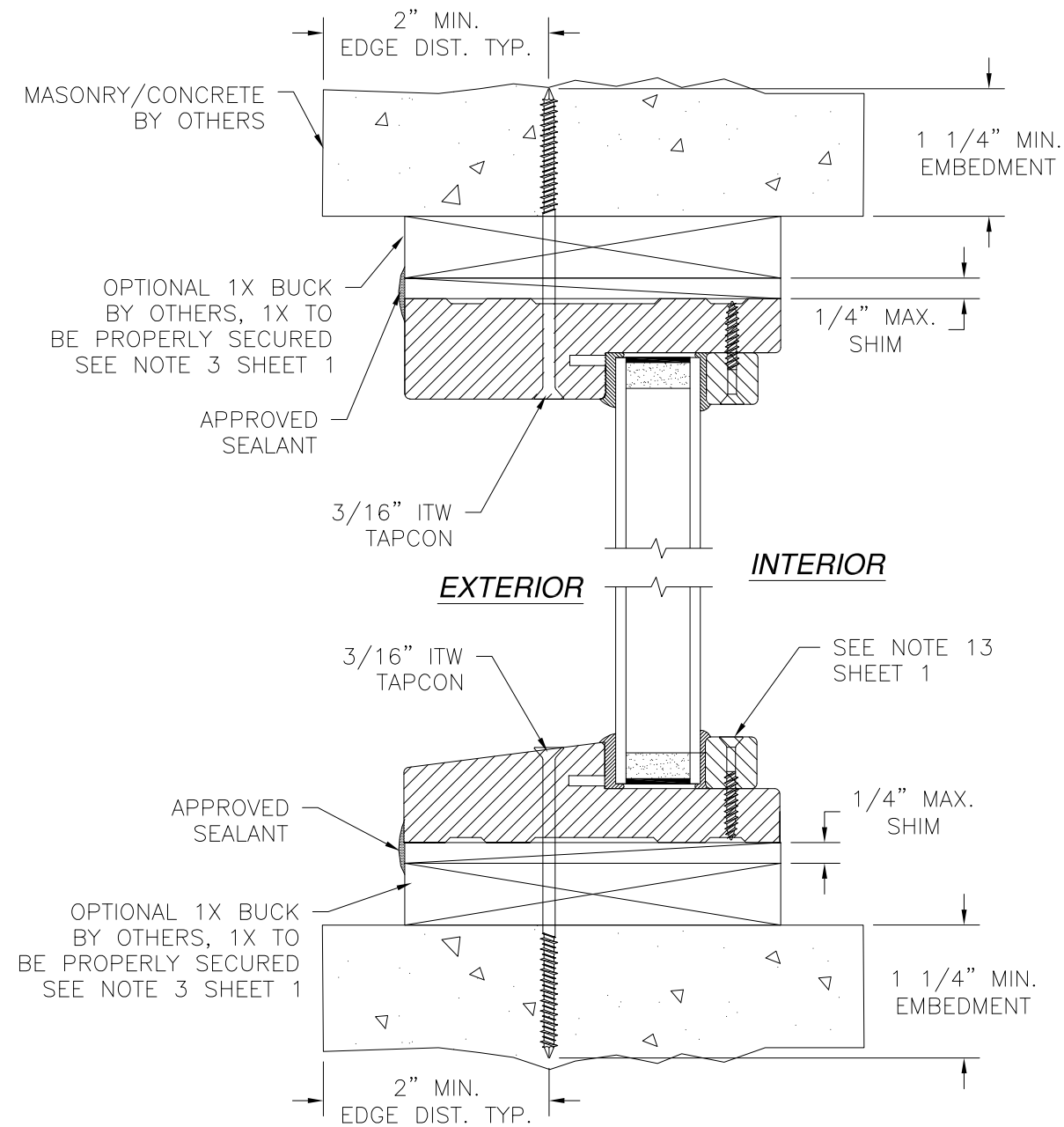
SIGNED: 12/08/2017

| | | |
|---|---------------------|--------------|
| PRO VIA DOOR, INC. 2150 STATE ROUTE 39 WEST SUGARCREEK, OH 44681 | | |
| FIXED WOOD TRANSOM 97" X 36" - NON-IMPACT INSTALLATION DETAILS | | |
| DRAWN: TJH | DWG NO. 08-01087 | REV B |
| SCALE NTS | DATE 08/11/10 | SHEET 3 OF 4 |
| L. ROBERTO LOMAS P.E. 1432 WOODFORD RD LEWISVILLE, NC 27023 434-688-0609 rllomas@rlomaspe.com | | |

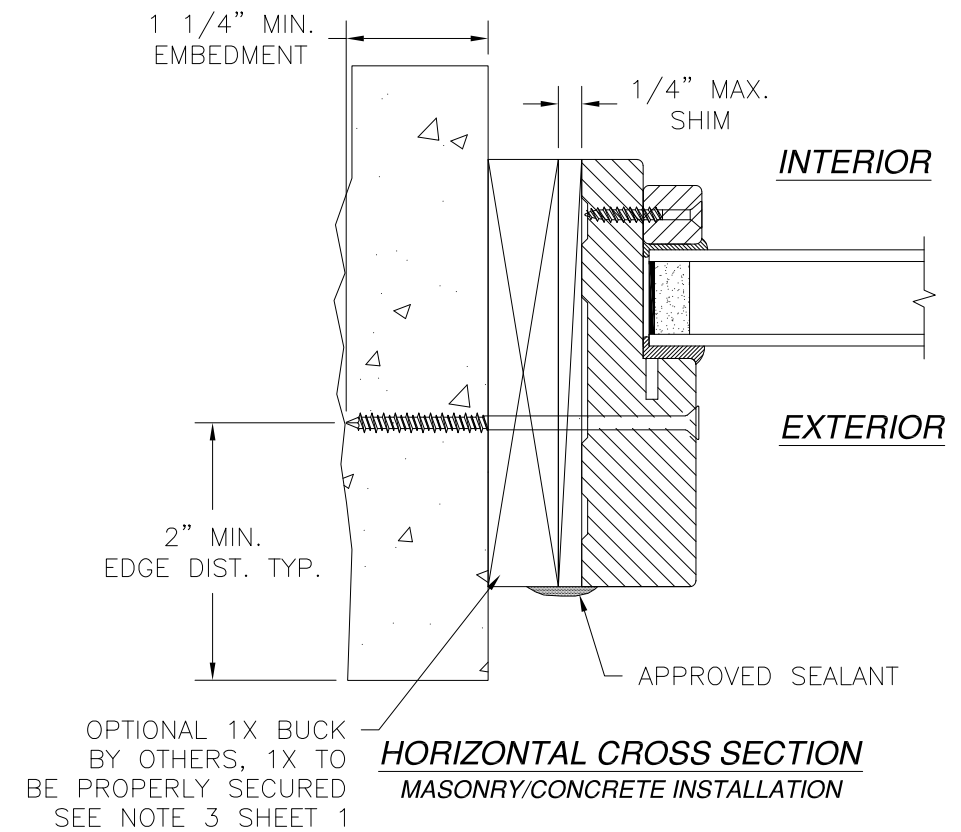


Luis R. Lomas P.E.
FL No.: 62514

| REVISIONS | | | |
|-----------|------------------------------|----------|----------|
| REV | DESCRIPTION | DATE | APPROVED |
| B | REVISED PER NEW REQUIREMENTS | 12/08/17 | R.L. |



VERTICAL CROSS SECTION
MASONRY/CONCRETE INSTALLATION



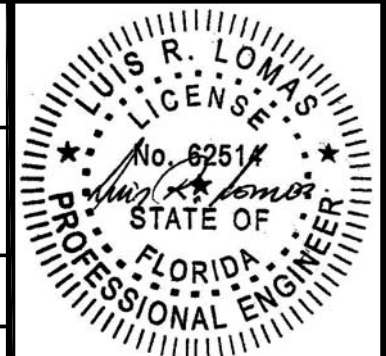
HORIZONTAL CROSS SECTION
MASONRY/CONCRETE INSTALLATION

NOTES:

1. INTERIOR AND EXTERIOR FINISHES, BY OTHERS, NOT SHOWN FOR CLARITY.
2. PERIMETER AND JOINT SEALANT BY OTHERS TO BE DESIGNED IN ACCORDANCE WITH ASTM E2112

SIGNED: 12/08/2017

| | | |
|--|---------------------|--------------|
| PRO VIA DOOR, INC. 2150 STATE ROUTE 39 WEST SUGARCREEK, OH 44681 | | |
| FIXED WOOD TRANSOM 97" X 36" - NON-IMPACT INSTALLATION DETAILS | | |
| DRAWN: TJH | DWG NO. 08-01087 | REV B |
| SCALE NTS | DATE 08/11/10 | SHEET 4 OF 4 |
| L. ROBERTO LOMAS P.E. 1432 WOODFORD RD LEWISVILLE, NC 27023 434-688-0609 rllomas@lrlomaspe.com | | |



Luis R. Lomas P.E.
FL No.: 62514