

Scott A. Brown P.E.
 F.P.E #65940
 698 Timber Creek Road
 Dixon Illinois 61021

REV.	DESCRIPTION	ECO	DATE	ECO:
G	1) WAS RICHARD A BAUMANN, P.E., 2) UPDATED JAMB ATTACHMENTS	7802.01	09/25/17	
F	1) RETESTED AT ACCREDITED LAB, 2) DESIGN PRESSURE WAS +/-30.7 PSF 3) ADDED SHTS 2 AND 3	6338.02	08/15/12	
E	1) ADDED GLASS TYPE, 2) WAS 19 GA, 3) WAS ASTM 330	4964	08/30/05	

SCALE: NONE

DRAWN BY: G. WEDEKIND

CHECKED BY: G. WEDEKIND

DATE: 02/08/94

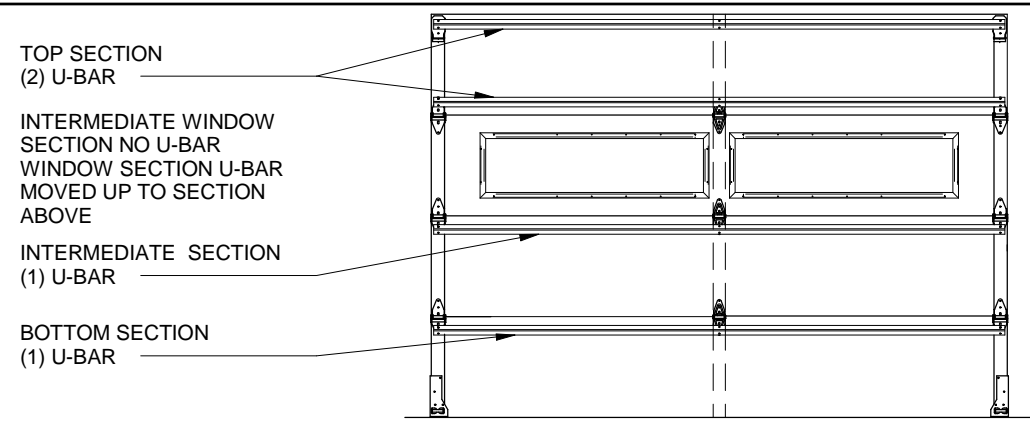
1101 EAST RIVER ROAD
 DIXON, IL 61021

TITLE:
 SPEC, WINDLOAD
 SHOWCASE, MASTERPIECE

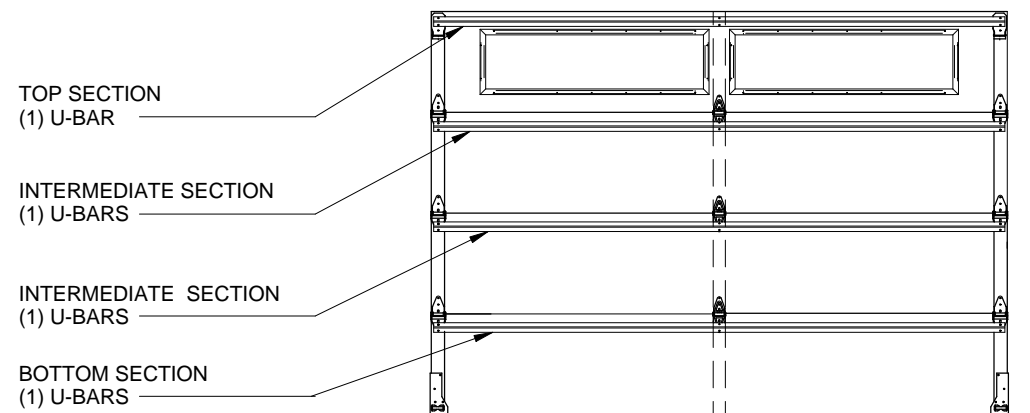
NO. P-1339

SHEET 1 OF 3

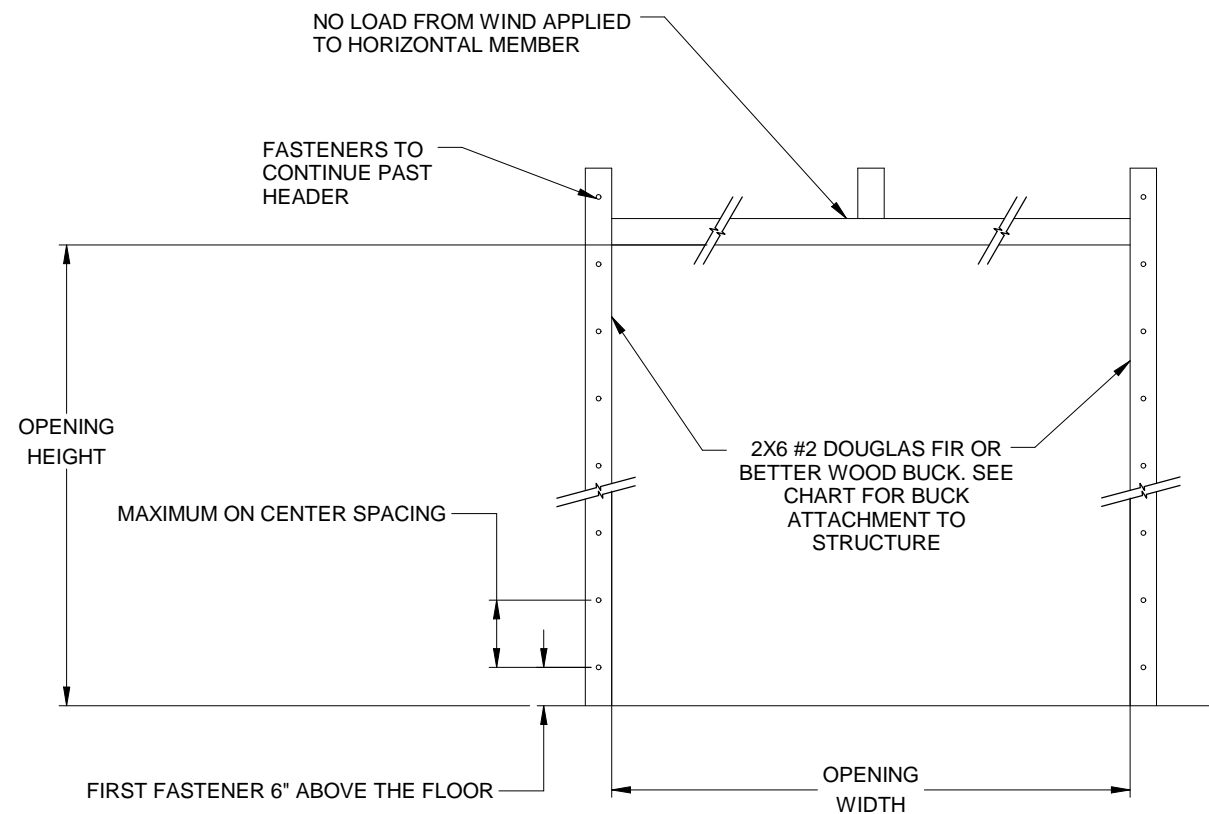
REV G



GLASS IN INTERMEDIATE SECTION
RANCH GLASS SHOWN



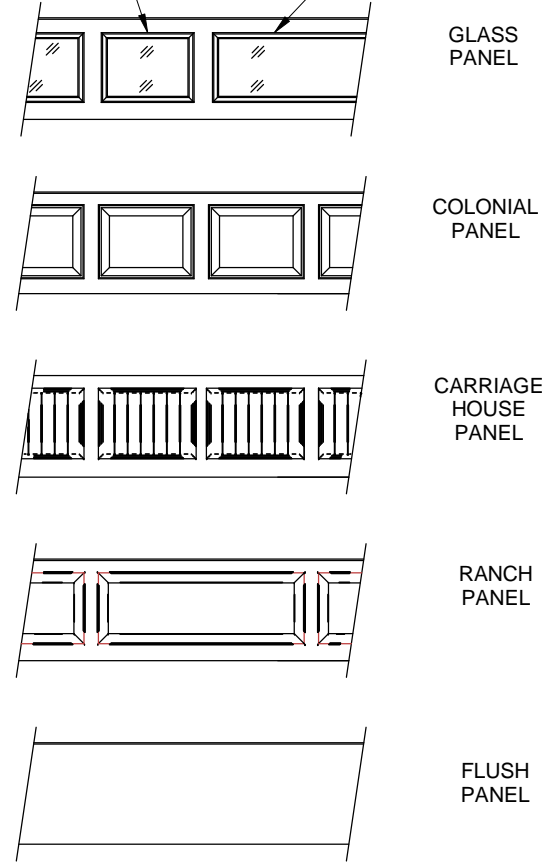
GLASS IN TOP SECTION
RANCH GLASS SHOWN



JAMB ATTACHMENT NOTES

1. MAXIMUM POSITIVE LOAD PER JAMB = (10'-0" X 29.0 PSF) / 2 = 145 LBS PER FOOT
2. MAXIMUM NEGATIVE LOAD PER JAMB = (10'-0" X -32.5 PSF) / 2 = 163 LBS PER FOOT.
3. DESIGN OF THE SUPPORTING STRUCTURE SHALL BE THE SOLE RESPONSIBILITY OF THE BUILDING DESIGNER AND SHALL BE DESIGNED FOR THE JAMB LOADS LISTED IN NOTES 1 AND 2.
4. ALTERNATE JAMB ATTACHMENTS MAY BE USED IF APPROVED BY A REGISTERED PROFESSIONAL ENGINEER.
5. DASMA TECHNICAL DATA SHEET TDS-161 MAY BE USED FOR ALTERNATE JAMB ATTACHMENTS.
6. 3/8" DIAMETER LAG SCREWS REQUIRE 1/16" DIAMETER PILOT HOLE AND 1-1/2" MINIMUM EDGE DISTANCE.

COLONIAL WINDOWS RANCH WINDOWS



GLASS OPTIONS:
1/8" DSB
1/8" ACRYLIC
1/2" INSULATED GLASS

PANEL OPTIONS
EXTERIOR VIEW

2X6 ATTACHMENT TO STRUCTURE						
STRUCTURE TYPE	FASTENER TYPE	MINIMUM EMBEDMENT	MINIMUM EDGE DISTANCE	MINIMUM ON CENTER SPACING	DIMENSION A (MAXIMUM ON CENTER SPACING)	ALLOWABLE TENSION LOAD
2500 PSI MIN. CONCRETE	1/4" TAPCON+ (PLUS) WITH 1-1/8" OD WASHER	2"	2.5	6"	24"	691
SOUTHERN PINE	3/8" X 3" LAG WITH 1-1/8" OD WASHER	1.50"	1.50"	1.50"	24"	655
SPRUCE PINE FIR	3/8" X 3" LAG WITH 1-1/8" OD WASHER	1.50"	1.50"	1.50"	24"	482

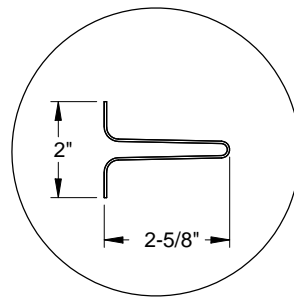
Scott A. Brown P.E.
F.P.E #65940
698 Timber Creek Road
Dixon Illinois 61021

SCALE: NONE
DRAWN BY: G. WEDEKIND
CHECKED BY: G. WEDEKIND
DATE: 02/08/94
ECO:

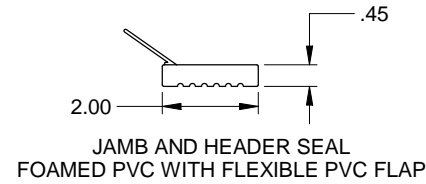


TITLE:
SPEC, WINDLOAD
SHOWCASE, MASTERPIECE

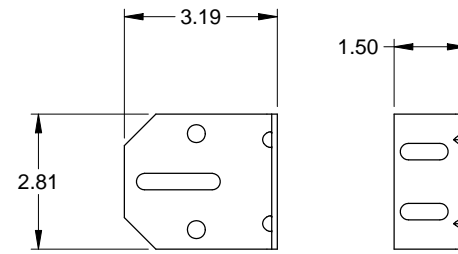
NO. P-1339
SHEET 2 OF 3
REV G



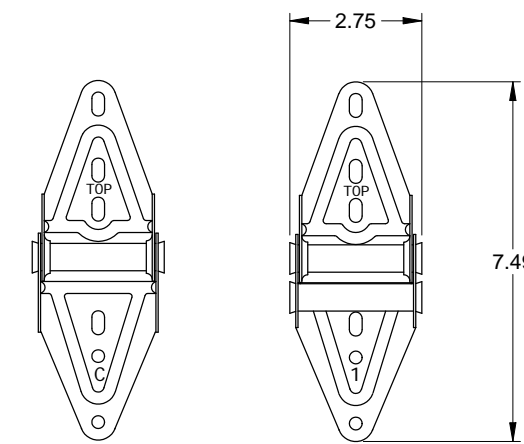
STEEL U-BAR DETAIL
20 GA. (.035" MIN) GALVANIZED
HIGH TENSILE STEEL 80 KSI MINIMUM YIELD



JAMB AND HEADER SEAL
FOAMED PVC WITH FLEXIBLE PVC FLAP

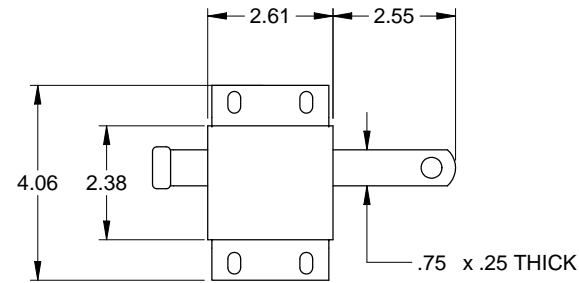


3" TRACK BRACKET
.116 GALV. STEEL

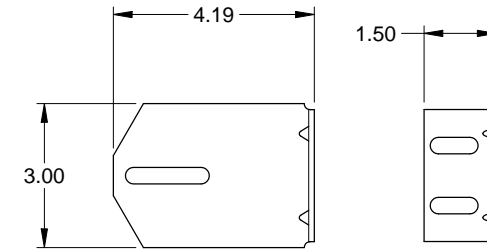


CENTER HINGE
.045 GALV. STEEL

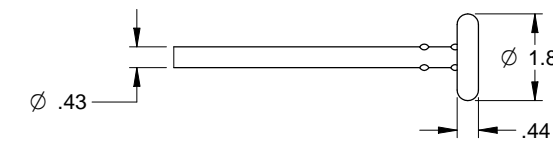
EDGE HINGE
.086 GALV. STEEL



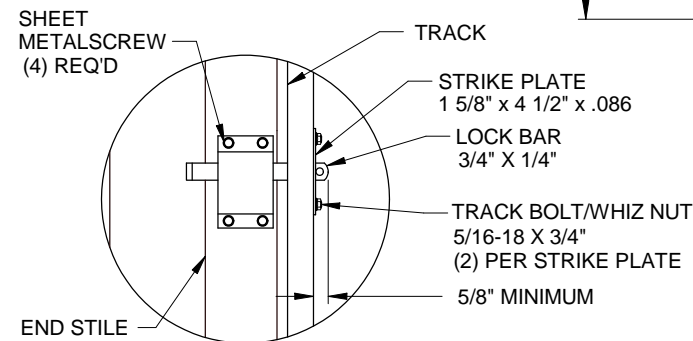
SLIDE LOCK
CASE .086 GALV. STEEL



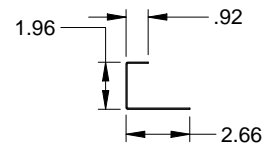
4" TRACK BRACKET
.116 GALV. STEEL



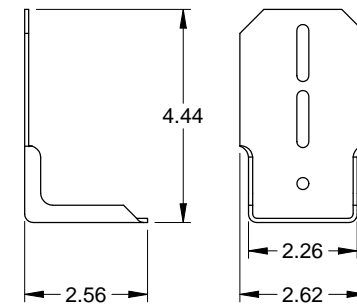
TRACK ROLLER



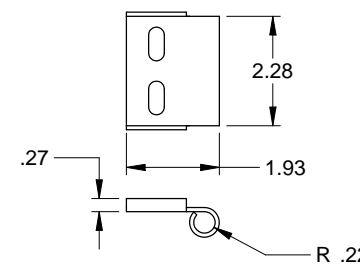
INTERIOR LOCK DETAIL



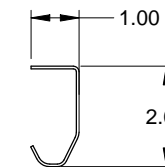
END STILE
.043 GALV. STEEL



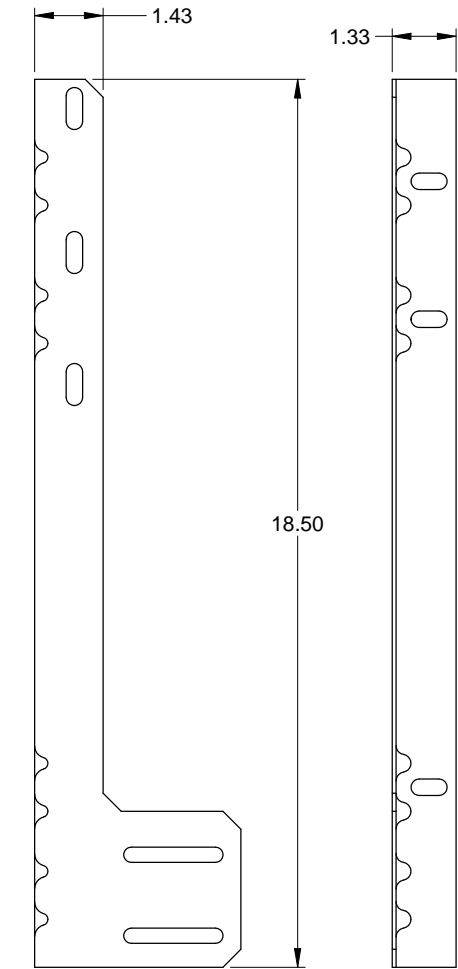
TOP FIXTURE
.086 GALV. STEEL



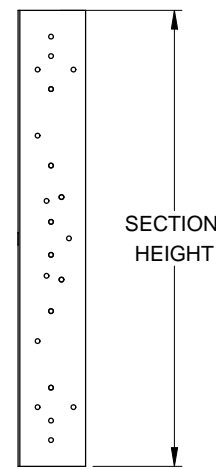
TOP ROLLER CARRIER
.086 GALV. STEEL
ATTACHED TO TOP FIXTURE WITH
(2) TRACK BOLTS AND WHIZ NUTS



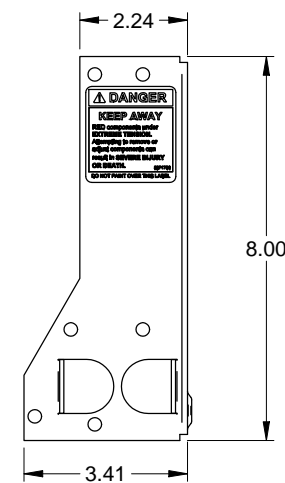
TRACK
.055 GALV. STEEL



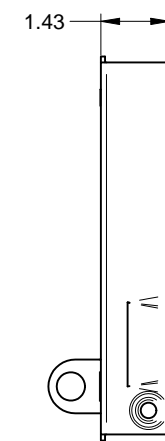
JAMB ANGLE
.078 GALV. STEEL



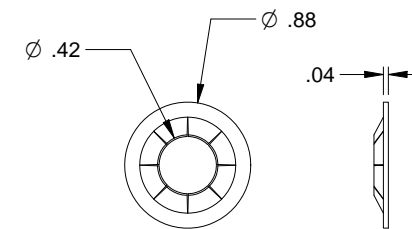
END STILE
.043 GALV. STEEL



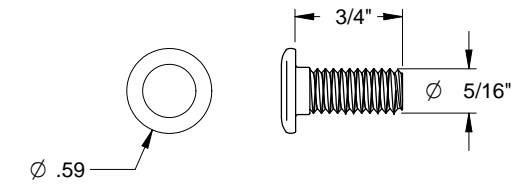
CORNER BRACKET
.086 GALV. STEEL



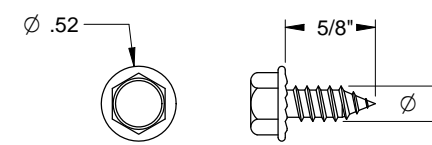
CORNER BRACKET
.086 GALV. STEEL



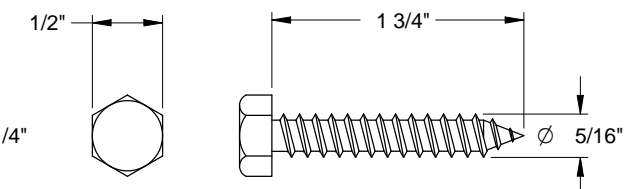
RETAINING NUT



TRACK BOLT



SHEET METAL SCREW



HEX HEAD LAG SCREW