

INTERIOR SKIN
 .013 THICK G-40 GALVANIZED STEEL WITH AN EPOXY PRIMER AND BAKED ON POLYESTER FINISH WHICH IS ROLL-FORMED WITH .04" DEEP HORIZONTAL GROOVES WITH A STUCCO TEXTURE.

EXTERIOR SKIN
 .018 THICK G-40 GALVANIZED STEEL WITH AN EPOXY PRIMER AND BAKED ON POLYESTER FINISH WHICH IS ROLL-FORMED WITH .04" DEEP HORIZONTAL GROOVES WITH A STUCCO TEXTURE.

INSULATION CORE
 POLYURETHANE FOAM

CENTER HINGE
 SEE DETAIL ON SHT 3
 STEEL U-BAR
 SEE DETAIL ON SHT 3

RETAINING NUT
 7/16" PUSH ON
 RETAINING NUT (1)
 REQUIRED PER ROLLER
 SEE DETAIL ON SHT 3

SECTION B-B

PERIMETER SEAL, OPTIONAL

JAMBS
 SEE SHT 2 FOR JAMB
 ATTACHMENT

HEX HEAD LAG SCREW
 (2) PER BRACKET, SEE DETAIL
 ON SHT 3

TRACK BRACKET SHOWN
 FULL ANGLE OPTIONAL
 SEE DETAIL ON SHT 3

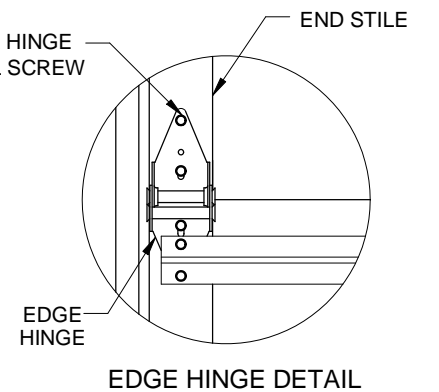
TRACK BOLT / WHIZ LOCK NUT
 SEE DETAIL ON SHT 3

TRACK ROLLER
 SEE DETAIL ON SHT 3

TRACK, 2" SHOWN, 3" OPTIONAL
 SEE DETAIL ON SHT 3

SPRING COUNTERBALANCE
 SPRING SIZE AND QUANTITY
 WILL VARY BASED ON DOOR
 SIZE.

(5) REQ'D PER HINGE
 SHEET METAL SCREW



SECTION A-A

CENTER HINGE
 DETAIL

CORNER BRACKET
 DETAIL

DOOR HEIGHT

8'-0" HIGH
 SHOWN
 OTHER DOOR
 HEIGHTS
 AVAILABLE UP
 TO 24'-0" USING
 21" OR 24" HIGH
 SECTIONS

TOP FIXTURE
 SEE DETAIL ON SHT 3

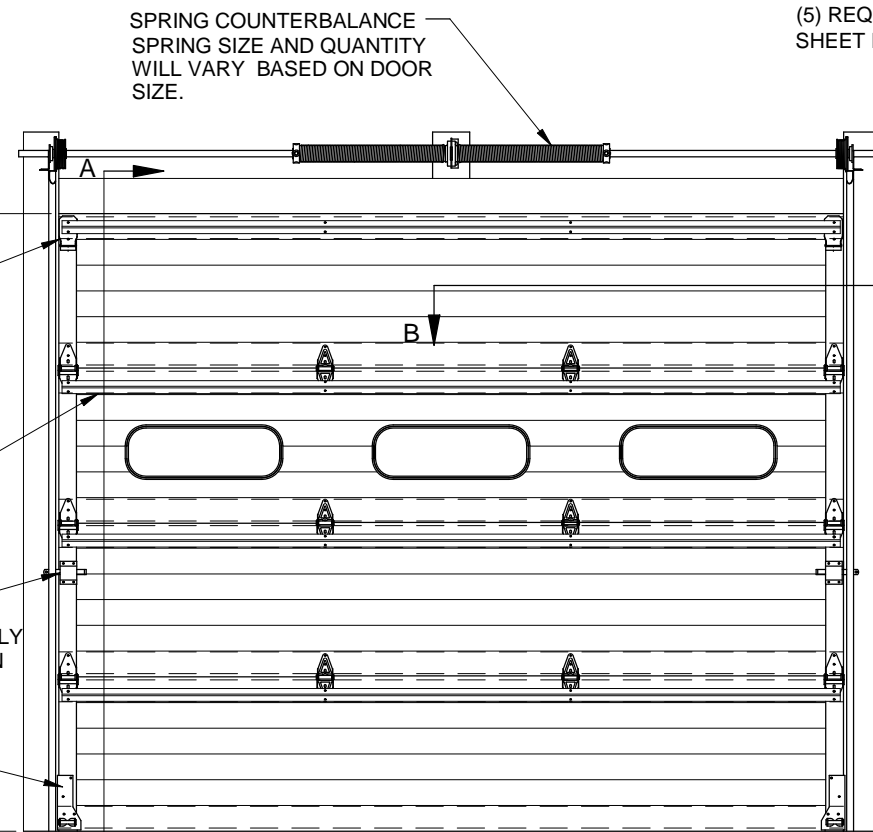
GLAZING (OPTIONAL)
 SEE DETAILS ON SHT 2

STEEL REINFORCEMENT
 (1) U-BAR PER SECTION

LOCKS REQUIRED
 ON DOORS NOT ELECTRICALLY
 OPERATED. SEE DETAILS ON
 SHT 2.

CORNER BRACKET
 SEE DETAIL ON SHT 3

VENTS (OPTIONAL)
 VENT OPENINGS MAY BE
 LOCATED IN BOTTOM SECTION
 AS REQUIRED BY CODE



MAXIMUM DOOR WIDTH 10' - 2"
 10'-2" SHOWN

INTERIOR ELEVATION

DOORS TESTED PER
 ANSI/DASMA 108
 FOR STATIC AIR PRESSURE

MAXIMUM DOOR WIDTH	DESIGN LOAD	
10' - 2"	+30.0	-34.0

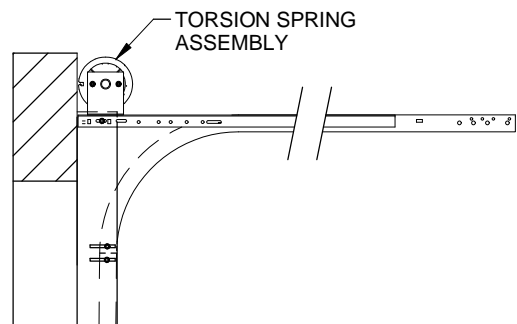
Scott A. Brown P.E.
 F.P.E #65940
 698 Timber Creek Road
 Dixon Illinois 61021

REV.	DESCRIPTION	ECO	DATE	ECO: 6338.02
B	1) WAS RICHARD A BAUMANN, P.E., 2) UPDATED JAMB ATTACHMENTS	7802.01	09/25/17	
A	RELEASE FOR PRODUCTION	6338.02	08/02/12	

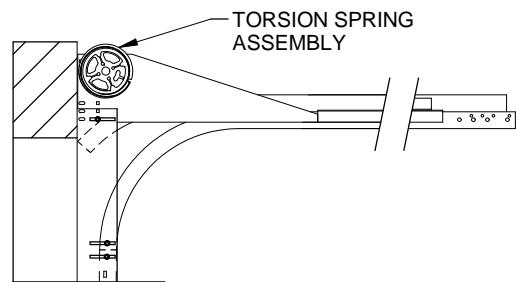
SCALE: NONE
DRAWN BY: G. WEDEKIND
CHECKED BY: G. WEDEKIND
DATE: 08/02/12



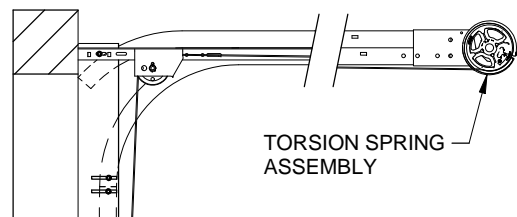
TITLE: SPEC, WINDLOAD THERMASEAL STANDARD		
NO. P-2414	SHEET 1 OF 4	REV B



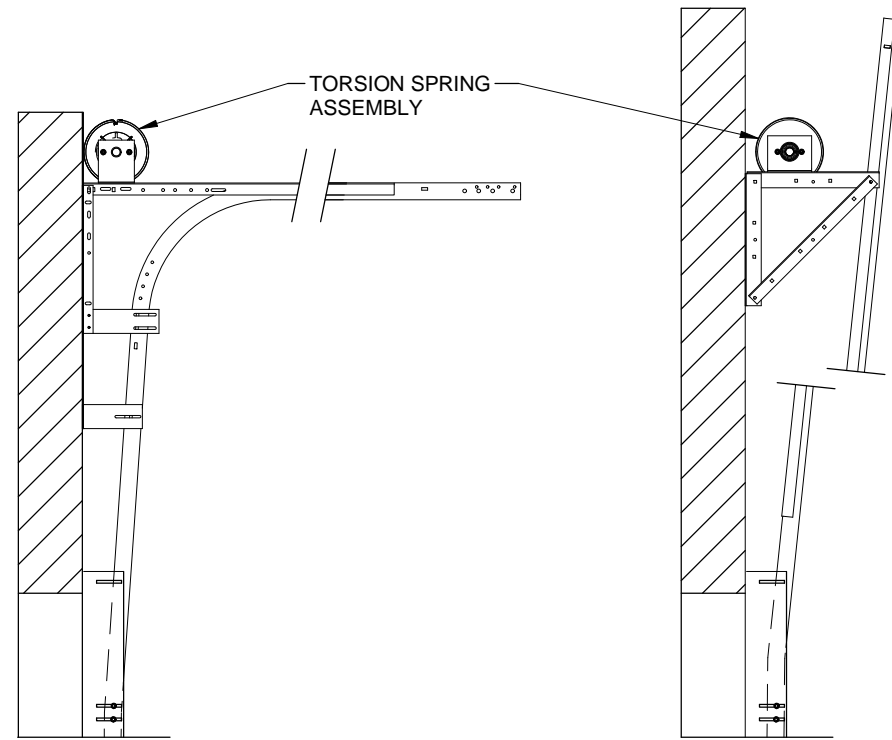
NORMAL HEADROOM TRACK
2" TRACK ANGLE MOUNT SHOWN
2" TRACK BRACKET MOUNT AVAILABLE
3" TRACK ANGLE MOUNT AVAILABLE



FRONT MOUNT LOW HEADROOM TRACK
2" TRACK ANGLE MOUNT SHOWN
2" TRACK BRACKET MOUNT AVAILABLE
3" TRACK ANGLE MOUNT AVAILABLE

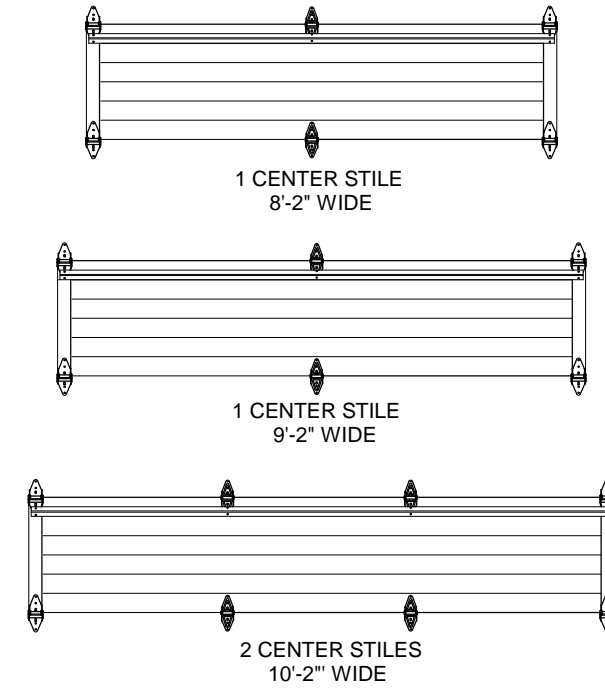


REAR MOUNT LOW HEADROOM TRACK
2" TRACK ANGLE MOUNT SHOWN
2" TRACK BRACKET MOUNT AVAILABLE
3" TRACK ANGLE MOUNT AVAILABLE

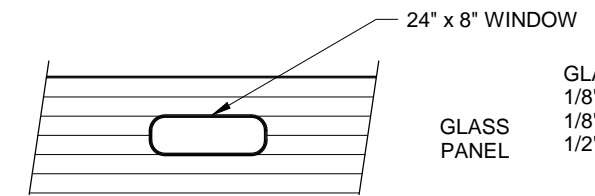


LIFT CLEARANCE TRACK
2" TRACK ANGLE MOUNT SHOWN
2" TRACK BRACKET MOUNT AVAILABLE
3" TRACK ANGLE MOUNT AVAILABLE

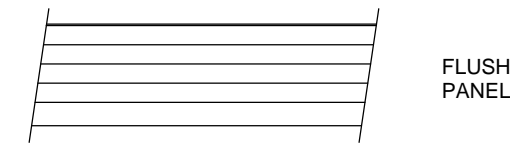
VERTICAL LIFT TRACK
2" TRACK ANGLE MOUNT SHOWN
2" TRACK BRACKET MOUNT AVAILABLE
3" TRACK ANGLE MOUNT AVAILABLE



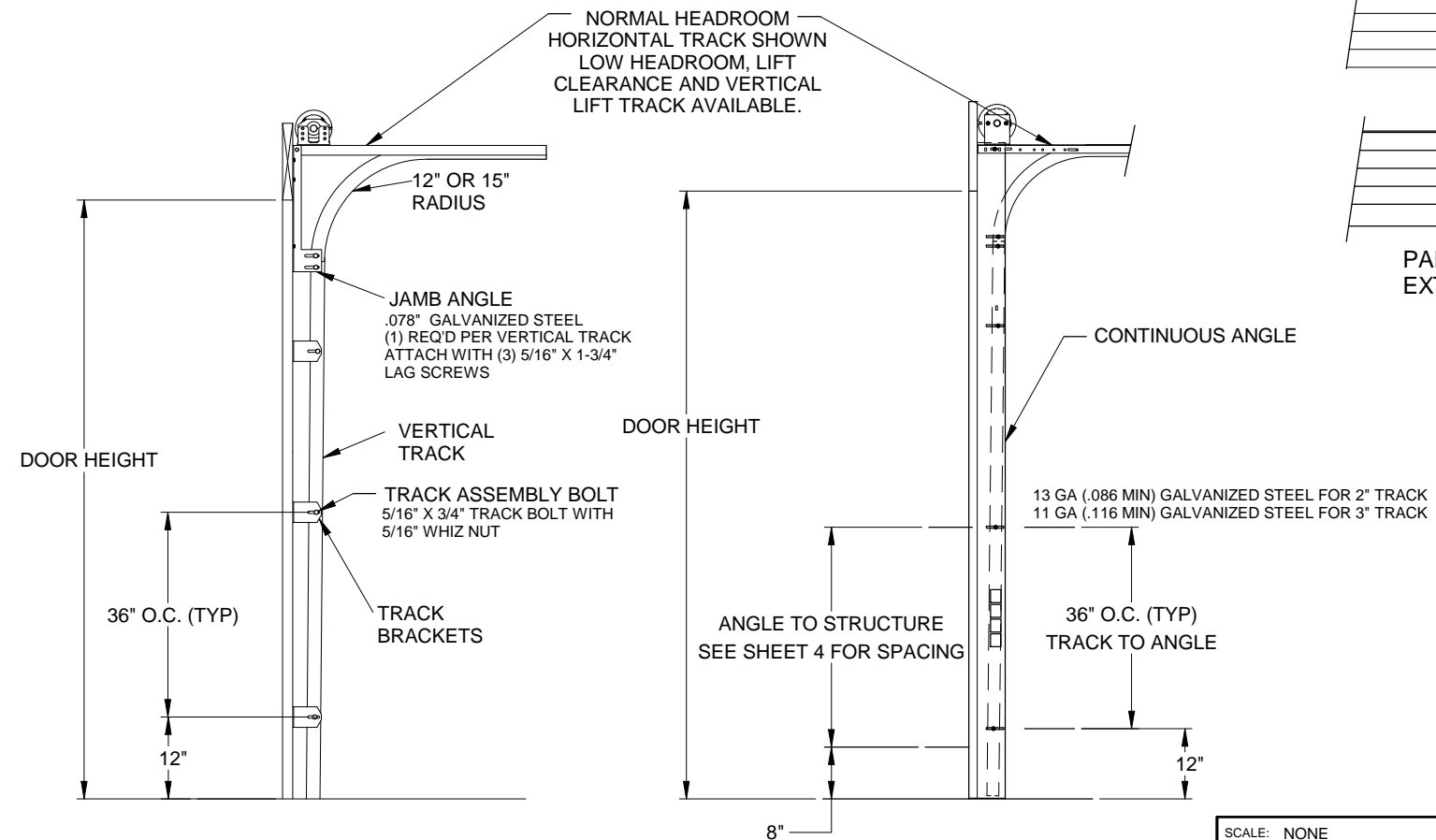
HINGE ROW LAYOUT
INTERIOR VIEW



GLASS OPTIONS:
1/8" DSB
1/8" ACRYLIC
1/2" INSULATED GLASS

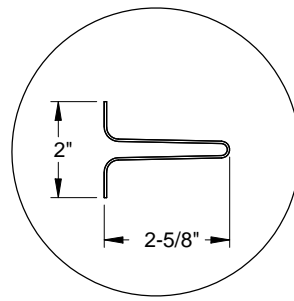


PANEL OPTIONS
EXTERIOR VIEW

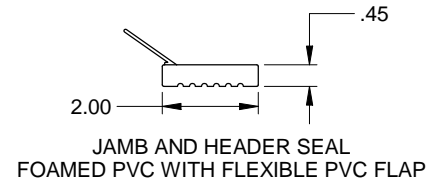


TYPICAL TRACK INSTALLATION
BRACKET MOUNT
WOOD JAMBS

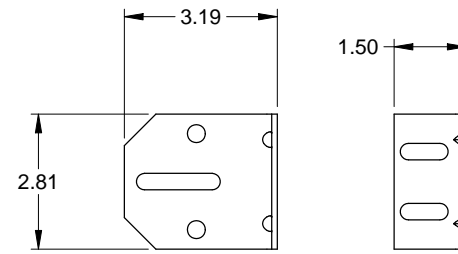
TYPICAL TRACK INSTALLATION
ANGLE MOUNT
WOOD, STEEL OR MASONRY
JAMBS



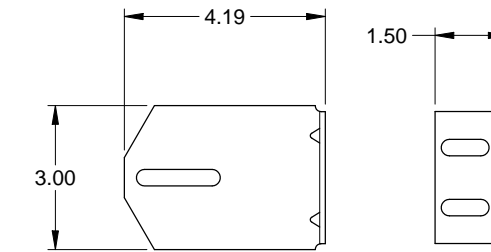
STEEL U-BAR DETAIL
18 GA. (.049" MIN) GALVANIZED
HIGH TENSILE STEEL 80 KSI MINIMUM YIELD



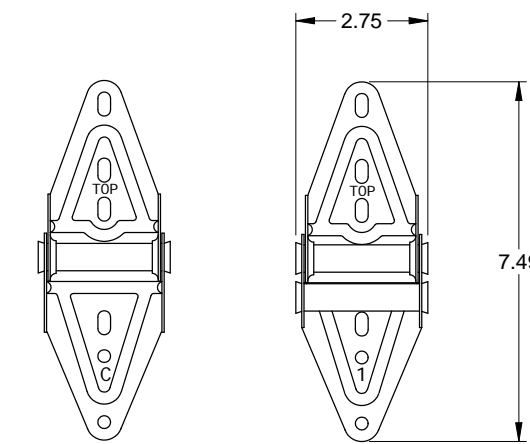
JAMB AND HEADER SEAL
FOAMED PVC WITH FLEXIBLE PVC FLAP



3" TRACK BRACKET
.116 GALV. STEEL

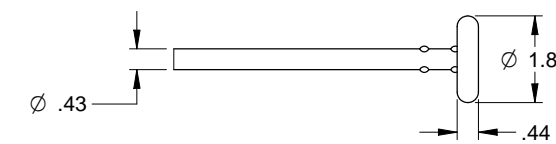


4" TRACK BRACKET
.116 GALV. STEEL

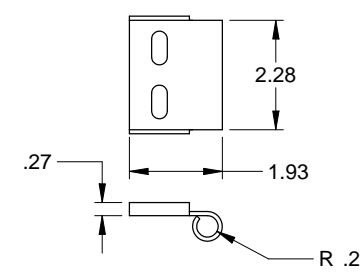


CENTER HINGE
.045 GALV. STEEL

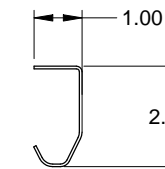
EDGE HINGE
.086 GALV. STEEL



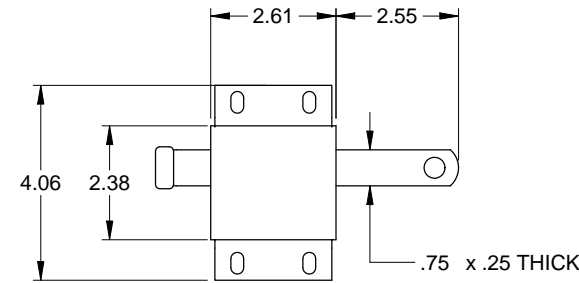
TRACK ROLLER



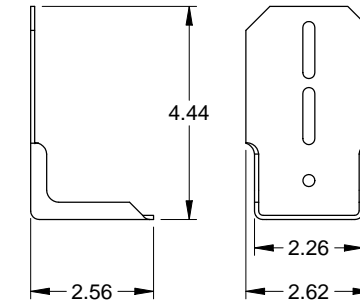
TOP ROLLER CARRIER
.086 GALV. STEEL
ATTACHED TO TOP FIXTURE WITH
(2) TRACK BOLTS AND WHIZ NUTS



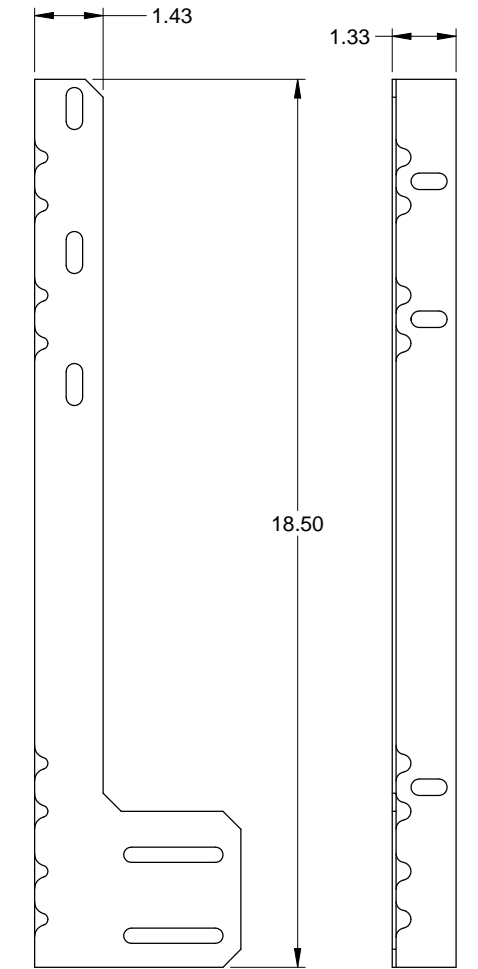
TRACK
.055 GALV. STEEL



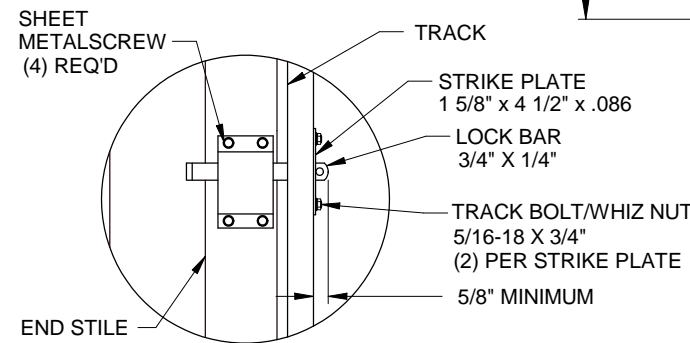
SLIDE LOCK
CASE .086 GALV. STEEL



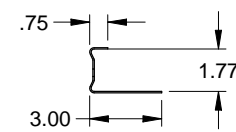
TOP FIXTURE
.086 GALV. STEEL



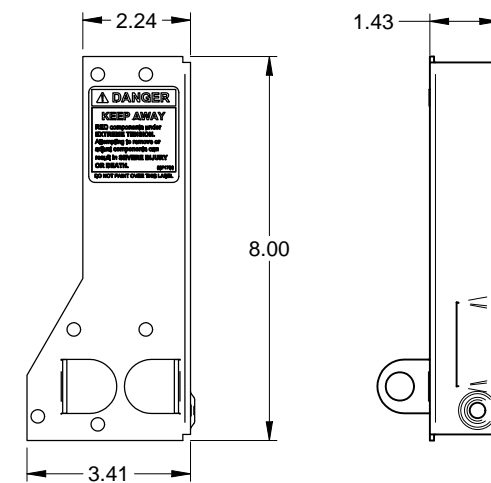
JAMB ANGLE
.078 GALV. STEEL



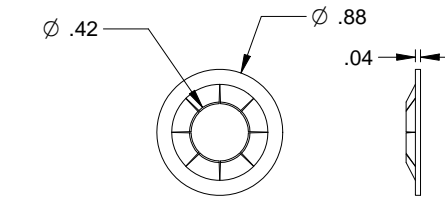
INTERIOR LOCK DETAIL



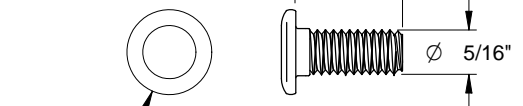
END STILE
.055 GALV. STEEL



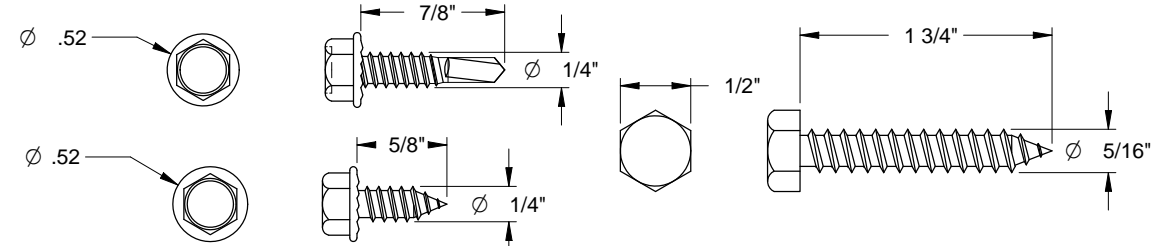
CORNER BRACKET
.086 GALV. STEEL



RETAINING NUT



TRACK BOLT



SHEET METAL SCREW
BOTH STYLES ARE INTERCHANGABLE

HEX HEAD LAG SCREW

Scott A. Brown P.E.
F.P.E. #65940
698 Timber Creek Road
Dixon Illinois 61021

SCALE: NONE
DRAWN BY: G. WEDEKIND
CHECKED BY: G. WEDEKIND
DATE: 08/02/12
ECO: 6338.02

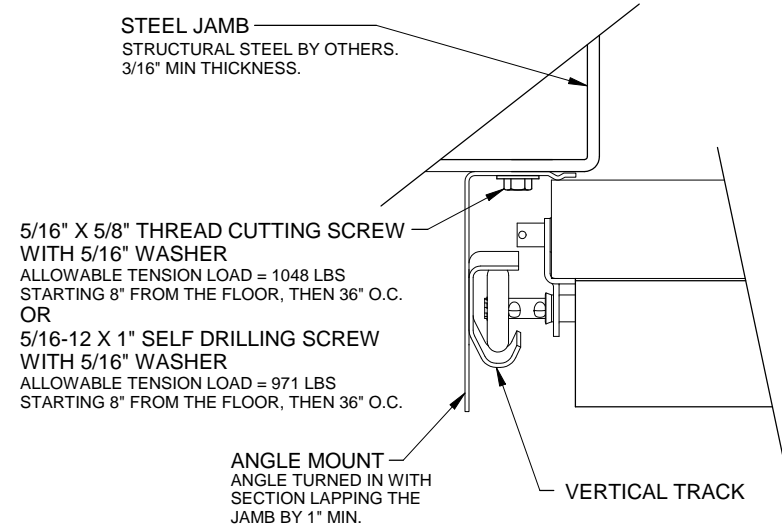


TITLE:
SPEC, WINDLOAD
THERMASEAL STANDARD

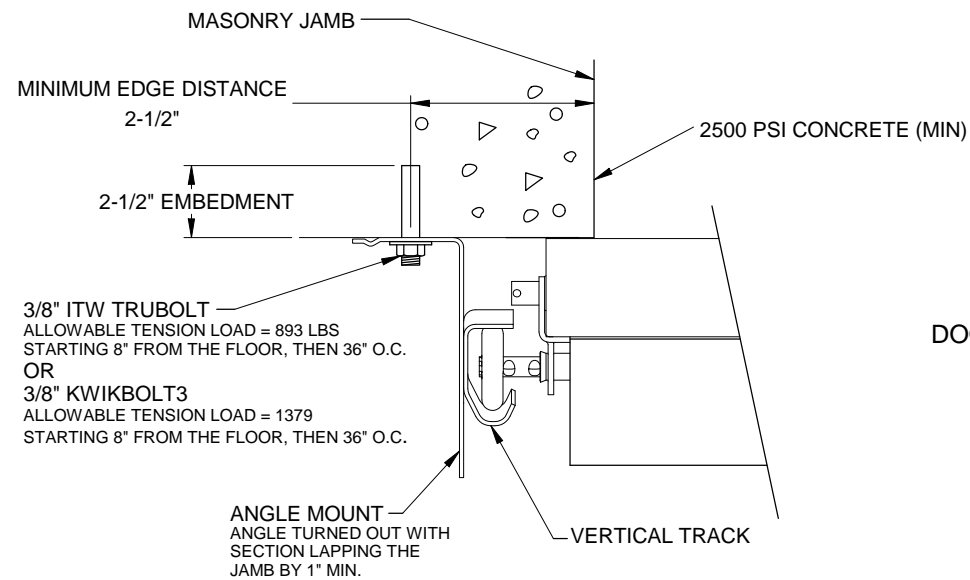
NO. P-2414

SHEET
3 OF 4

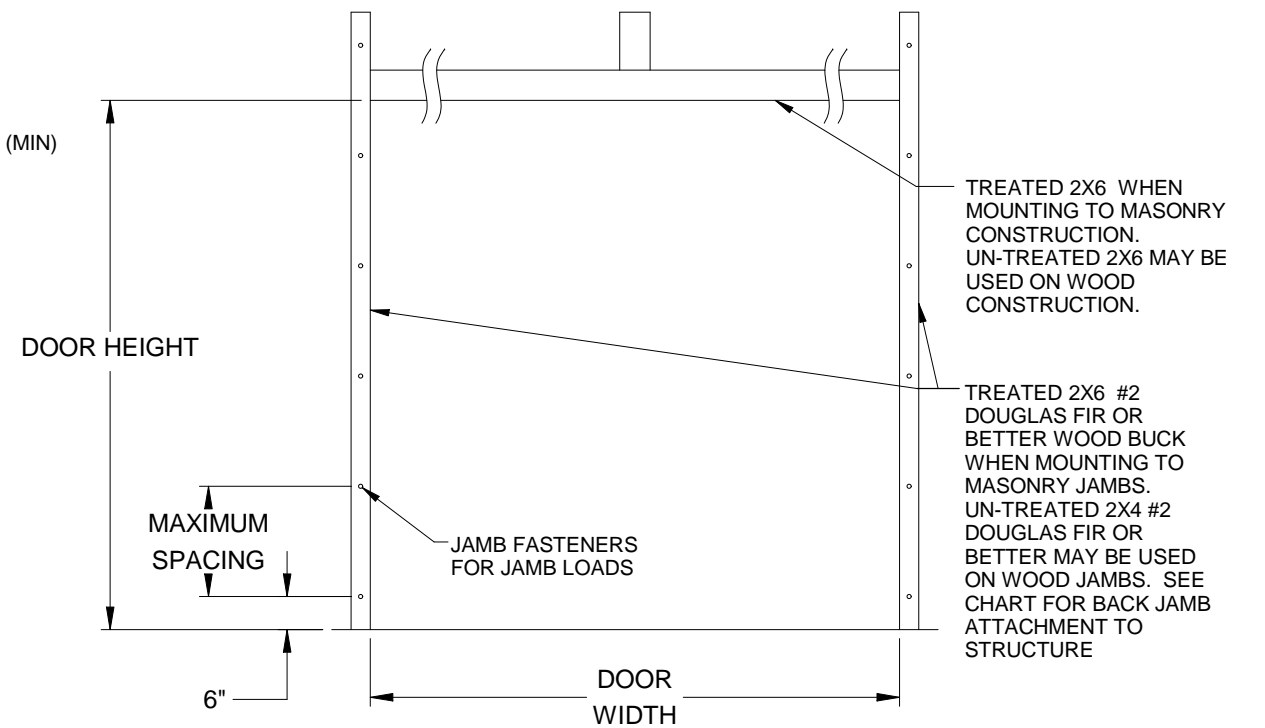
REV
B



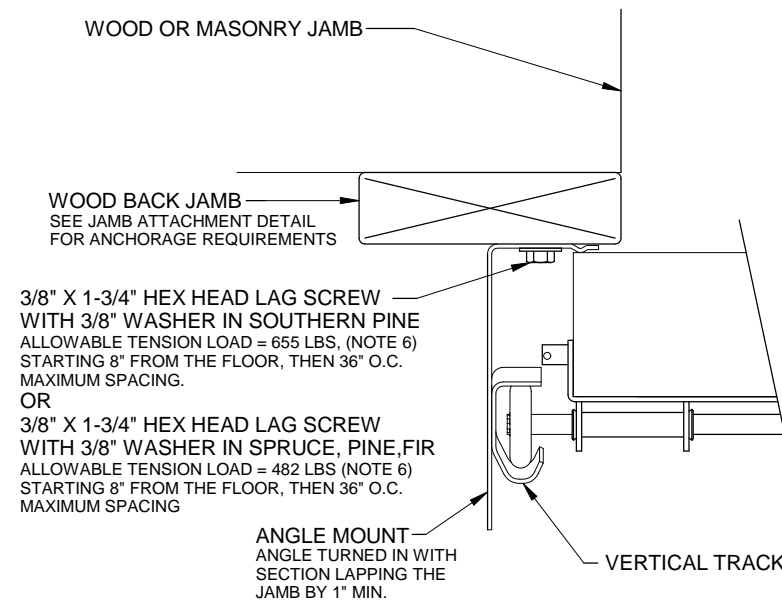
TRACK ASSEMBLY ATTACHMENT TO STEEL JAMB
2" TRACK ANGLE MOUNT TURNED IN SHOWN
3" TRACK ANGLE MOUNT AVAILABLE



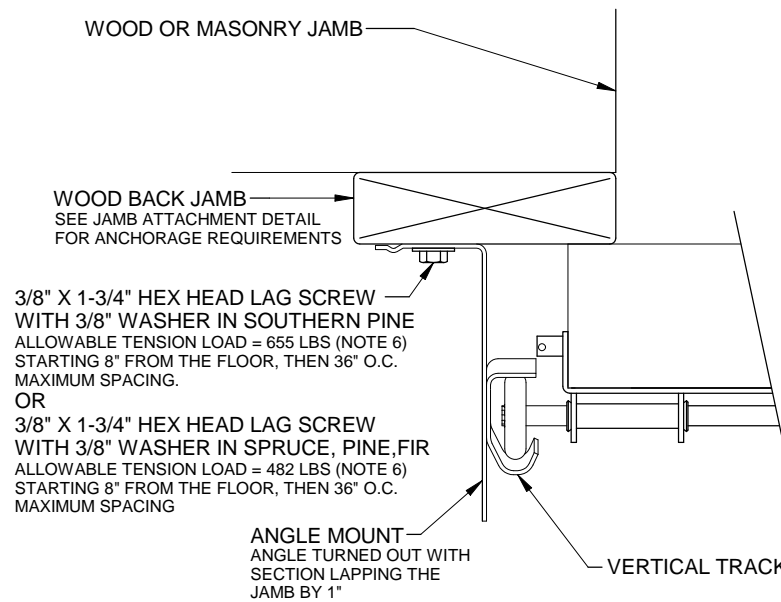
TRACK ASSEMBLY ATTACHMENT TO MASONRY JAMB
2" TRACK ANGLE MOUNT TURNED OUT SHOWN
3" TRACK ANGLE MOUNT AVAILABLE



JAMB ATTACHMENT



TRACK ASSEMBLY ATTACHMENT TO WOOD BACK JAMB
2" TRACK ANGLE MOUNT TURNED IN SHOWN
3" TRACK ANGLE MOUNT AVAILABLE



TRACK ASSEMBLY ATTACHMENT TO WOOD BACK JAMB
2" TRACK ANGLE MOUNT TURNED OUT SHOWN
3" TRACK ANGLE MOUNT AVAILABLE

JAMB ATTACHMENT NOTES

1. MAXIMUM POSITIVE LOAD PER JAMB = $(10' - 2" \times 30.0 \text{ PSF}) / 2 = 153 \text{ LBS PER FOOT}$
2. MAXIMUM NEGATIVE LOAD PER JAMB = $(10' - 2" \times -34.0 \text{ PSF}) / 2 = 173 \text{ LBS PER FOOT}$.
3. DESIGN OF THE SUPPORTING STRUCTURE SHALL BE THE SOLE RESPONSIBILITY OF THE BUILDING DESIGNER AND SHALL BE DESIGNED FOR THE JAMB LOADS LISTED IN NOTES 1 AND 2.
4. ALTERNATE JAMB ATTACHMENTS MAY BE USED IF APPROVED BY A REGISTERED PROFESSIONAL ENGINEER.
5. DASMA TECHNICAL DATA SHEET TDS-161 MAY BE USED FOR ALTERNATE JAMB ATTACHMENTS.
6. 3/8" DIAMETER LAG SCREWS REQUIRED 1/16" PILOT HOLE AND 1-1/2" MINIMUM EDGE DISTANCE.

2X6 ATTACHMENT TO STRUCTURE						
STRUCTURE TYPE	FASTENER TYPE	MINIMUM EMBEDMENT	MINIMUM EDGE DISTANCE	MINIMUM ON CENTER SPACING	DIMENSION A (MAXIMUM ON CENTER SPACING)	ALLOWABLE TENSION LOAD
2500 PSI MIN. CONCRETE	1/4" TAPCON+ (PLUS) WITH 1-1/8" OD WASHER	2"	2.5"	6"	24"	691
SOUTHERN PINE	3/8" X 3" LAG WITH 1-1/8" OD WASHER	1.50"	1.50"	1.50"	24"	655
SPRUCE PINE FIR	3/8" X 3" LAG WITH 1-1/8" OD WASHER	1.50"	1.50"	1.50"	24"	482