

Scott A. Brown P.E.  
F.P.E. #65940  
698 Timber Creek Road  
Dixon Illinois 61021

REV.	DESCRIPTION	ECO	DATE
B	1) WAS RICHARD A. BAUMANN, P.E., 2) UPDATED JAMB ATTACHMENTS	7802.01	09/25/17
A	RELEASED FOR PRODUCTION	6338.03	10/18/12

**TOLERANCES:**  
DIMENSIONS ARE IN INCHES  
TWO PLACE (.XX) ± .03  
THREE PLACE (.XXX) ± .015  
ANGLES ± 1°  
UNLESS OTHERWISE SPECIFIED

**MATERIAL:**

**FINISH:**

**SCALE:** None  
**DRAWN BY:** G. Wedekind  
**CHECKED BY:** G. Wedekind  
**DATE:** 10/18/12  
**ECO:** 6338.03



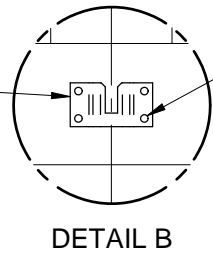
**TITLE:** SPEC, WINDLOAD BUILDMARK S / TRADEMARK 16' 0" WIDE

**NO.** P-2416

**SHEET** 1 OF 3

**REV** B

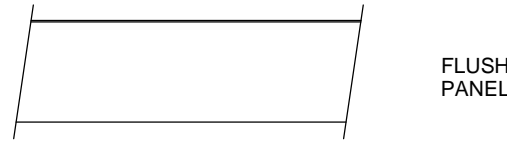
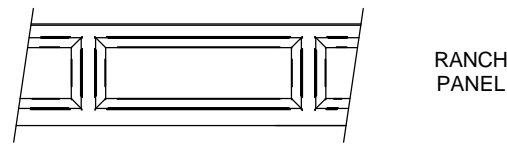
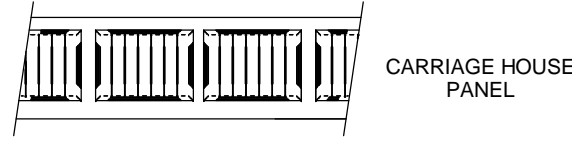
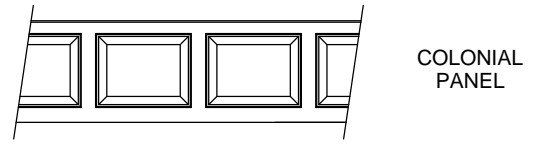
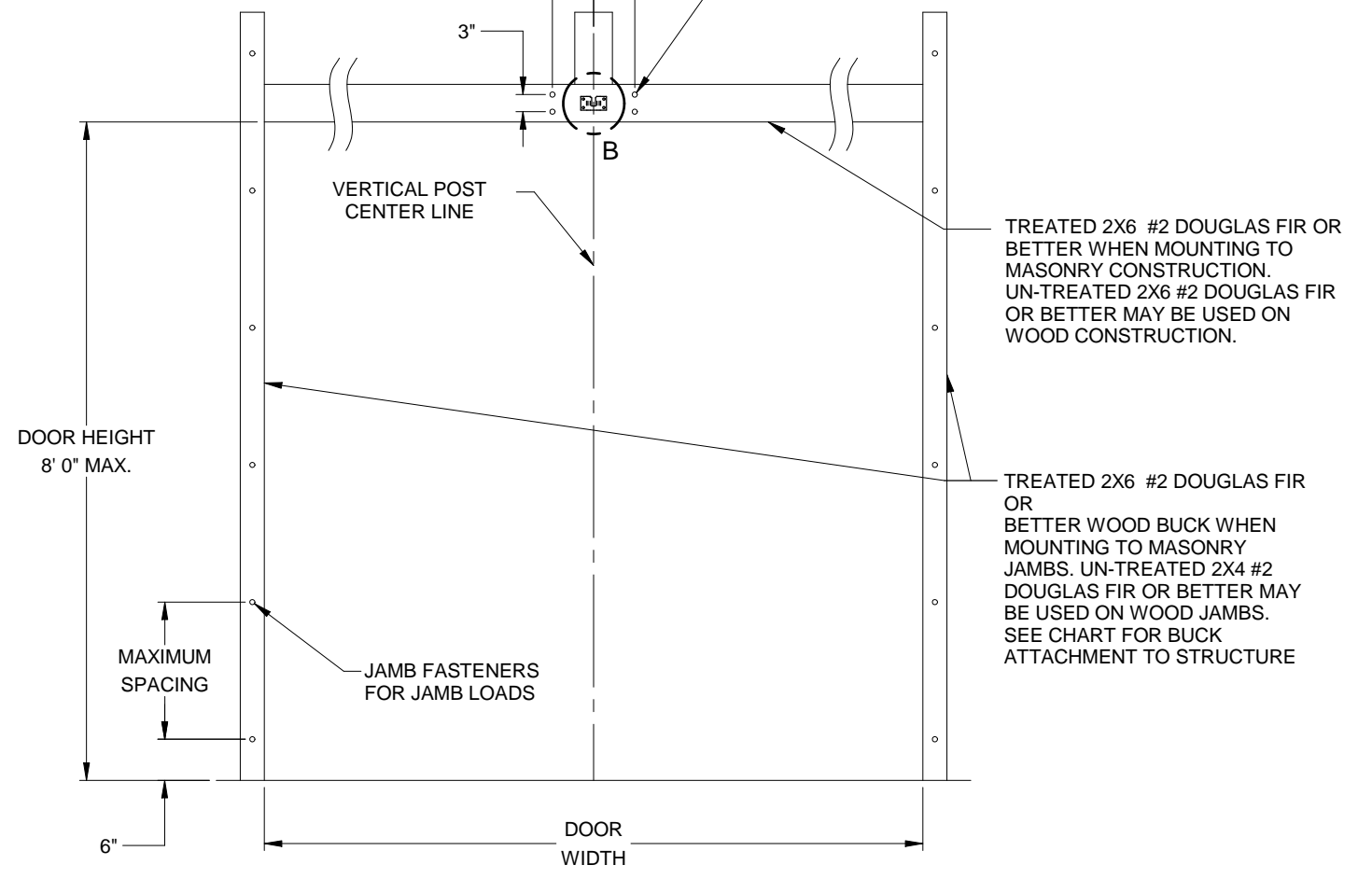
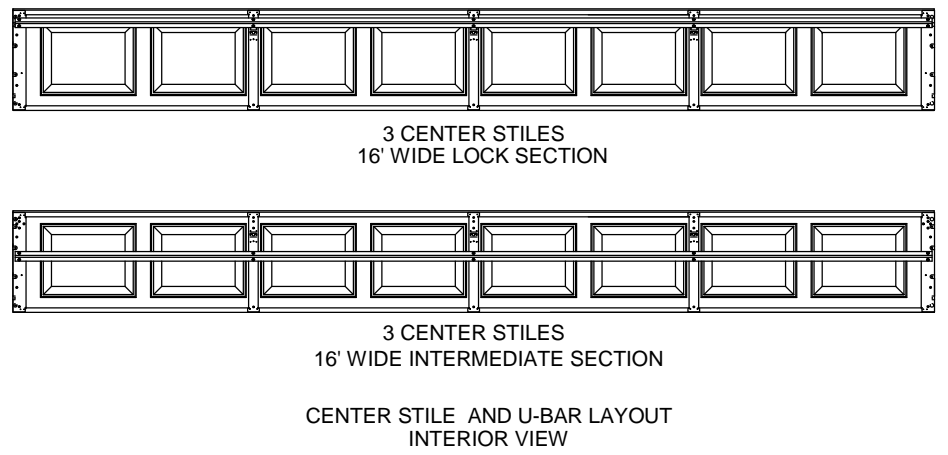
MAXIMUM LOAD ON HEADER POST BRACKET =  $(293 \times 8) / 2 = 1172$  LBS  
 MAXIMUM ALLOWABLE LOAD ON 5/16" X 1-3/4" LAG SCREW (SPF) =  $4 \times 307 = 1228$  LBS  
 MAXIMUM ALLOWABLE LOAD ON 5/16" X 1-3/4" LAG SCREW (SYP) =  $2 \times 460 = 1840$  LBS



(4) 5/16" X 1-3/4" LAG SCREWS PER BRACKET

ADDITIONAL FASTENERS FOR POST LOADS ARE IN ADDITION TO THE STANDARD FASTENERS REQUIRED TO HOLD 2X6 IN PLACE

(4) 3/8" X 3" LAG SCREWS WITH 1 INCH O.D. WASHERS FOR POST LOADS



PANEL OPTIONS EXTERIOR VIEW

JAMB ATTACHMENT NOTES

1. MAXIMUM POSITIVE LOAD PER JAMB = 88 LBS PER FOOT.
2. MAXIMUM NEGATIVE LOAD PER JAMB = 98 LBS PER FOOT.
3. MAXIMUM POSITIVE LOAD ON THE POST = 293 LBS PER FOOT.
4. MAXIMUM NEGATIVE LOAD ON THE POST = 326 LBS PER FOOT.
5. DESIGN OF THE SUPPORTING STRUCTURE SHALL BE THE SOLE RESPONSIBILITY OF THE BUILDING DESIGNER AND SHALL BE DESIGNED FOR THE JAMB LOADS LISTED IN NOTES 1, 2, 3 AND 4.
6. ALTERNATE JAMB ATTACHMENTS MAY BE USED IF APPROVED BY A REGISTERED PROFESSIONAL ENGINEER.
7. DASMA TECHNICAL DATA SHEET TDS-161 MAY BE USED FOR ALTERNATE JAMB ATTACHMENTS.

2X6 ATTACHMENT TO STRUCTURE						
STRUCTURE TYPE	FASTENER TYPE	MINIMUM EMBEDMENT	MINIMUM EDGE DISTANCE	MINIMUM ON CENTER SPACING	DIMENSION A (MAXIMUM ON CENTER SPACING)	ALLOWABLE TENSION LOAD
2500 PSI MIN. CONCRETE	1/4" TAPCON+ (PLUS) WITH 1-1/8" OD WASHER	2"	2.5	6"	24"	691
SOUTHERN PINE	3/8" X 3" LAG WITH 1-1/8" OD WASHER	1.50"	1.50"	1.50"	24"	620
SPRUCE PINE FIR	3/8" X 3" LAG WITH 1-1/8" OD WASHER	1.50"	1.50"	1.50"	24"	482

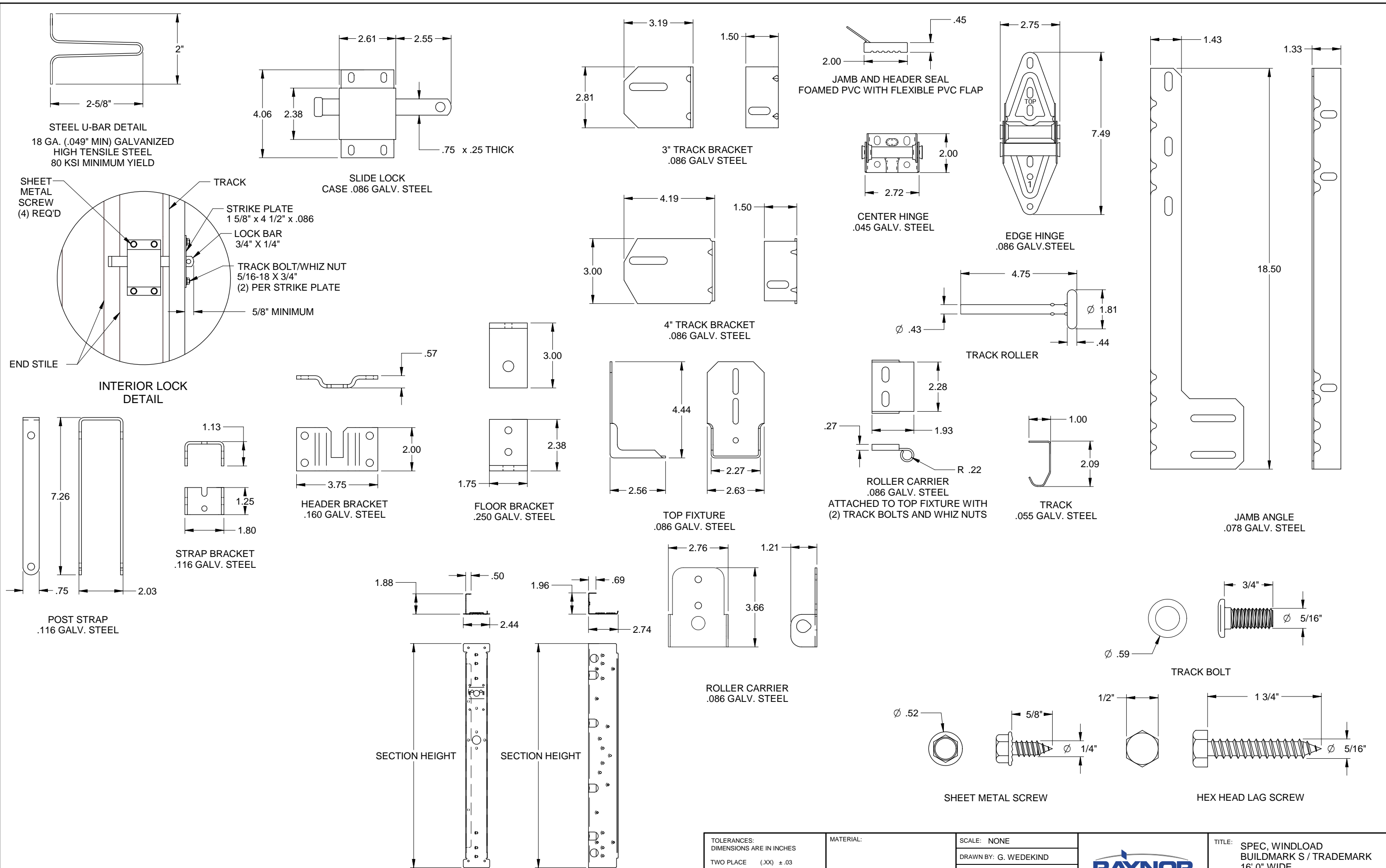
Scott A. Brown P.E.  
 F.P.E #65940  
 698 Timber Creek Road  
 Dixon Illinois 61021

TOLERANCES:  
 DIMENSIONS ARE IN INCHES  
 TWO PLACE (.XX) ± .03  
 THREE PLACE (.XXX) ± .015  
 ANGLES ± 1°  
 UNLESS OTHERWISE SPECIFIED

MATERIAL:  
 FINISH:  
 SCALE: None  
 DRAWN BY: G. Wedekind  
 CHECKED BY: G. Wedekind  
 DATE: 10/18/12  
 ECO: 6338.03



TITLE: SPEC, WINDLOAD BUILDMARK S / TRADEMARK 16' 0" WIDE  
 NO. P-2416  
 SHEET 2 OF 3  
 REV B



Scott A. Brown P.E.  
 F.P.E #65940  
 698 Timber Creek Road  
 Dixon Illinois 61021

TOLERANCES: DIMENSIONS ARE IN INCHES TWO PLACE (.XX) ± .03 THREE PLACE (.XXX) ± .015 ANGLES ± 1° UNLESS OTHERWISE SPECIFIED	MATERIAL:  FINISH:	SCALE: NONE	TITLE: SPEC, WINDLOAD BUILDMARK S / TRADEMARK 16' 0" WIDE
		DRAWN BY: G. WEDEKIND CHECKED BY: G. WEDEKIND	
		DATE: 10/18/12 ECO: 6338.03	NO. P-2416
			SHEET 3 OF 3 REV B



1101 EAST RIVER ROAD  
 DIXON, IL. 61021