

Scott A. Brown P.E.  
 F.P.E #65940  
 698 Timber Creek Road  
 Dixon Illinois 61021

REV.	DESCRIPTION	ECO	DATE	ECO: 6338.03
B	1) WAS RICHARD A. BAUMANN, P.E., 2) UPDATED JAMB ATTACHMENTS	7802.01	09/25/17	
A	RELEASED TO PRODUCTION	6338.03	10/22/12	

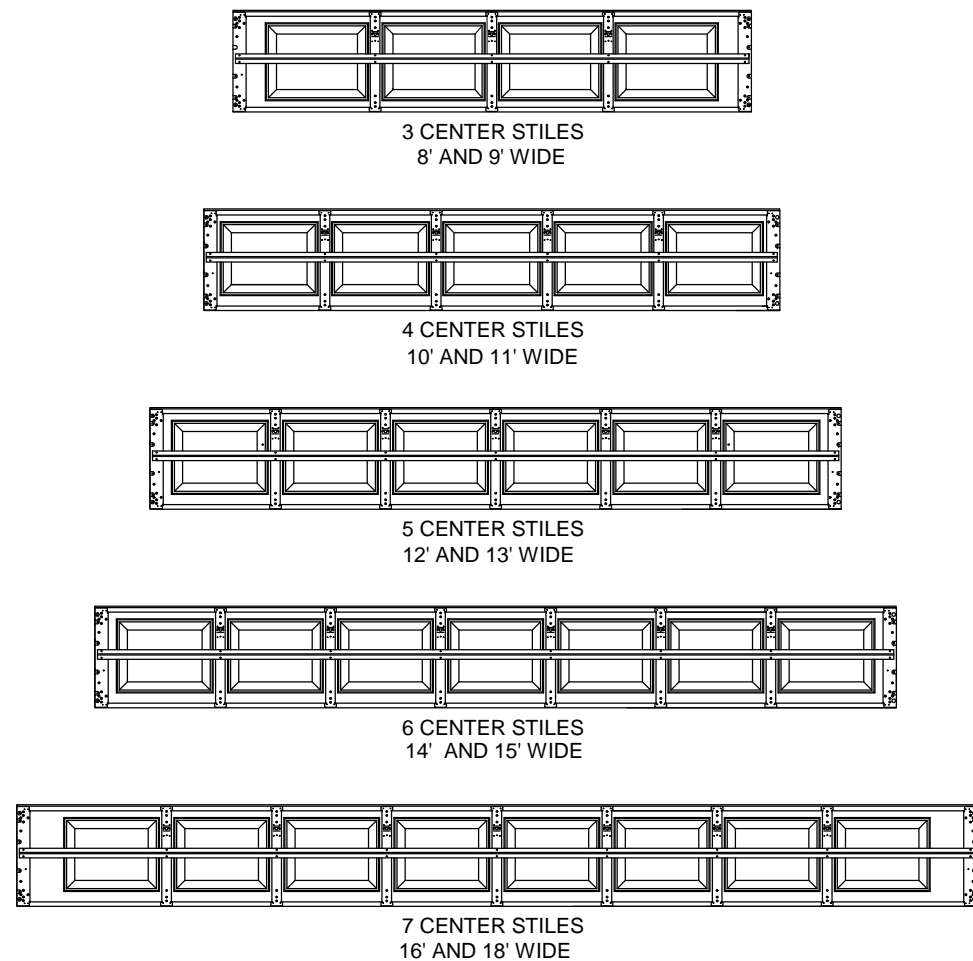
SCALE: NONE  
 DRAWN BY: G. WEDEKIND  
 CHECKED BY: G. WEDEKIND  
 DATE: 10/22/12

**RAYNOR**  
 1101 EAST RIVER ROAD  
 DIXON, IL. 61021

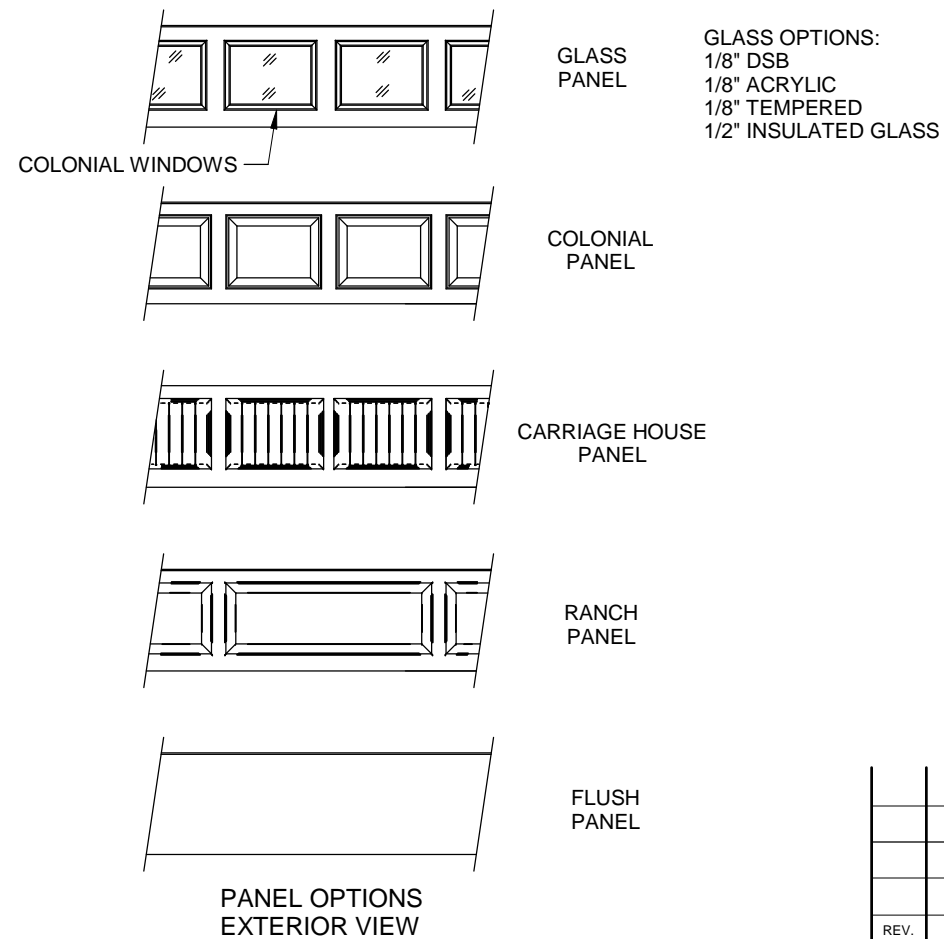
TITLE:  
 SPEC, WINDLOAD  
 BUILDMARK / TRADEMARK

NO. P-2417

SHEET	REV
1 OF 3	B

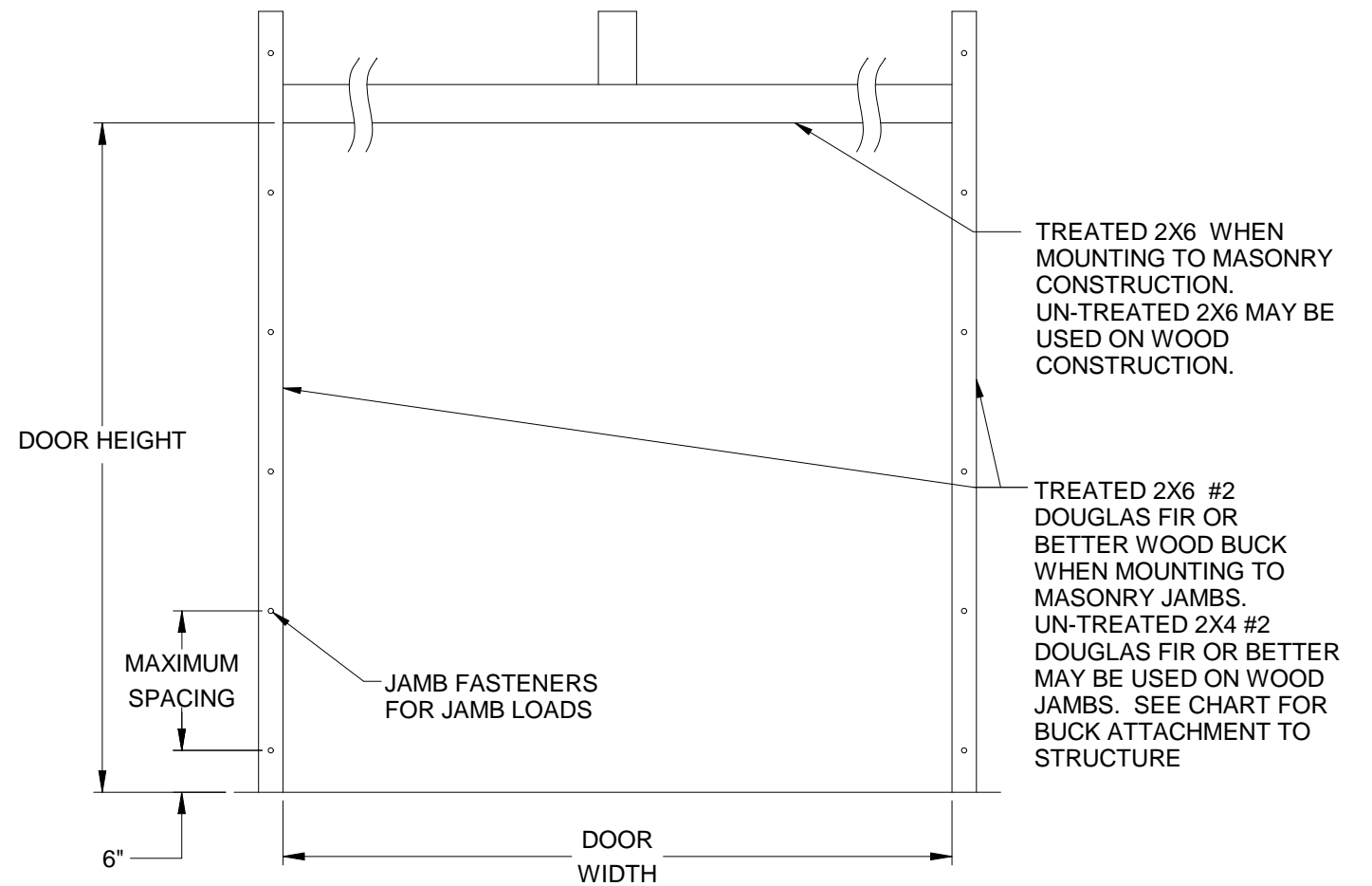


CENTER STILE LAYOUT INTERIOR VIEW  
INTERMEDIATE SECTION SHOWN



PANEL OPTIONS  
EXTERIOR VIEW

GLASS PANEL  
GLASS OPTIONS:  
1/8" DSB  
1/8" ACRYLIC  
1/8" TEMPERED  
1/2" INSULATED GLASS



JAMB ATTACHMENT NOTES

1. MAXIMUM POSITIVE LOAD PER JAMB =  $(18' \times 16.0 \text{ PSF}) / 2 = 144 \text{ LBS PER FOOT}$
2. MAXIMUM NEGATIVE LOAD PER JAMB =  $(18' \times -18.0 \text{ PSF}) / 2 = 162 \text{ LBS PER FOOT}$
3. DESIGN OF THE SUPPORTING STRUCTURE SHALL BE THE SOLE RESPONSIBILITY OF THE BUILDING DESIGNER AND SHALL BE DESIGNED FOR THE JAMB LOADS LISTED IN NOTES 1 AND 2.
4. ALTERNATE JAMB ATTACHMENTS MAY BE USED IF APPROVED BY A REGISTERED PROFESSIONAL ENGINEER.
5. DASMA TECHNICAL DATA SHEET TDS-161 MAY BE USED FOR ALTERNATE JAMB ATTACHMENTS.
6. 3/8" DIAMETER LAG SCREWS REQUIRE 1/16" DIAMETER PILOT HOLE AND 1-1/2" MINIMUM EDGE DISTANCE.

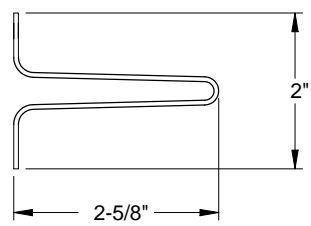
2X6 ATTACHMENT TO STRUCTURE						
STRUCTURE TYPE	FASTENER TYPE	MINIMUM EMBEDMENT	MINIMUM EDGE DISTANCE	MINIMUM ON CENTER SPACING	DIMENSION A (MAXIMUM ON CENTER SPACING)	ALLOWABLE TENSION LOAD
2500 PSI MIN. CONCRETE	1/4" TAPCON+ (PLUS) WITH 1-1/8" OD WASHER	2"	2.5	6"	24"	691
SOUTHERN PINE	3/8" X 3" LAG WITH 1-1/8" OD WASHER	1.50"	1.50"	1.50"	24"	655
SPRUCE PINE FIR	3/8" X 3" LAG WITH 1-1/8" OD WASHER	1.50"	1.50"	1.50"	24"	482

Scott A. Brown P.E.  
F.P.E #65940  
698 Timber Creek Road  
Dixon Illinois 61021

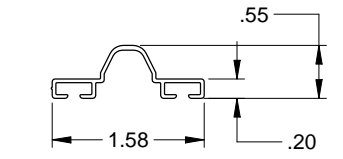
SCALE: NONE
DRAWN BY: G. WEDEKIND
CHECKED BY: G. WEDEKIND
DATE: 10/22/12
ECO: 6338.03
REV. DESCRIPTION ECO DATE



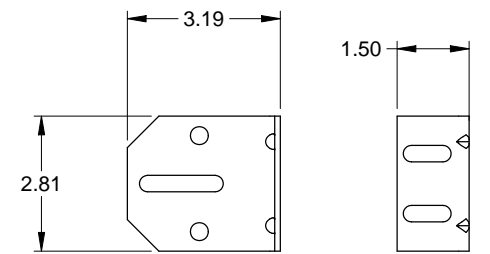
TITLE:  
SPEC, WINDLOAD  
BUILDMARK / TRADEMARK  
NO. P-2417 SHEET 2 OF 3 REV B



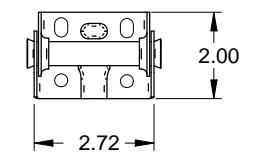
STEEL U-BAR DETAIL  
.049" MIN GALVANIZED  
HIGH TENSILE STEEL  
80 KSI MINIMUM YIELD



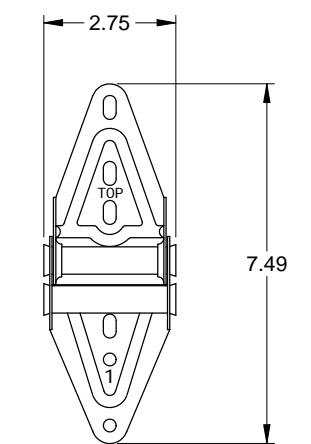
ASTRAGAL RETAINER  
.039 ALUMINUM



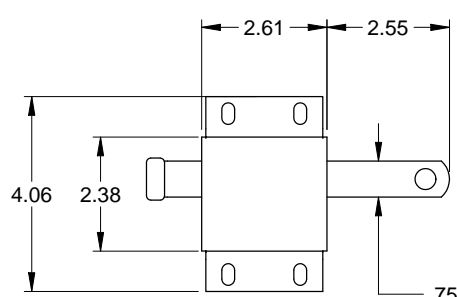
3" TRACK BRACKET  
.116 GALV STEEL



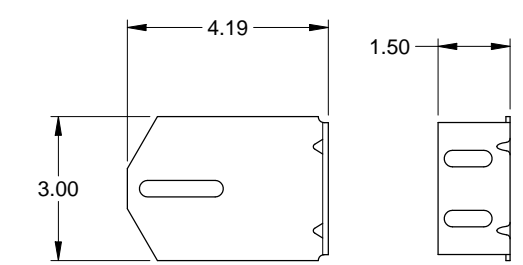
CENTER HINGE  
.045 GALV. STEEL



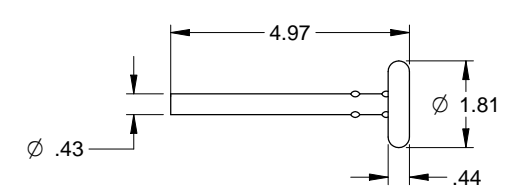
EDGE HINGE  
.086 GALV. STEEL



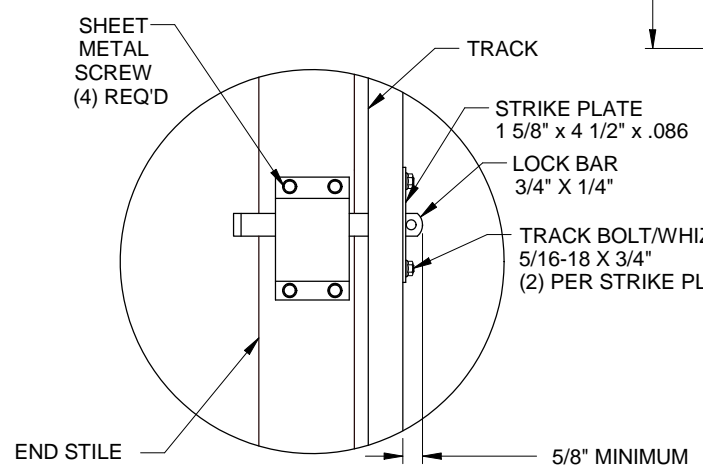
SLIDE LOCK  
CASE .086 GALV. STEEL  
OPTIONAL INTERIOR LOCK  
DETAIL



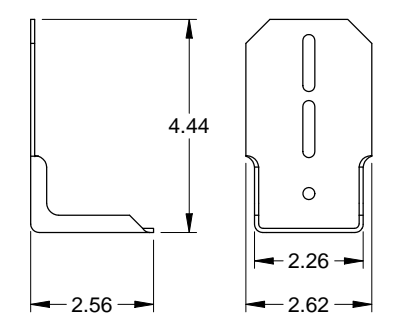
4" TRACK BRACKET  
.116 GALV. STEEL



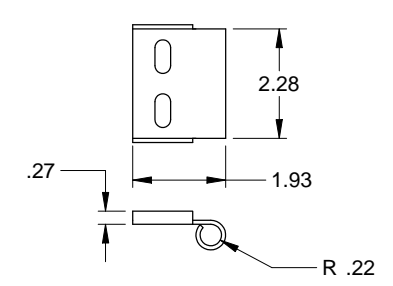
TRACK ROLLER



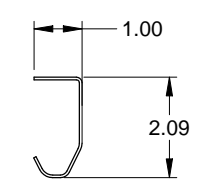
OPTIONAL INTERIOR LOCK  
DETAIL



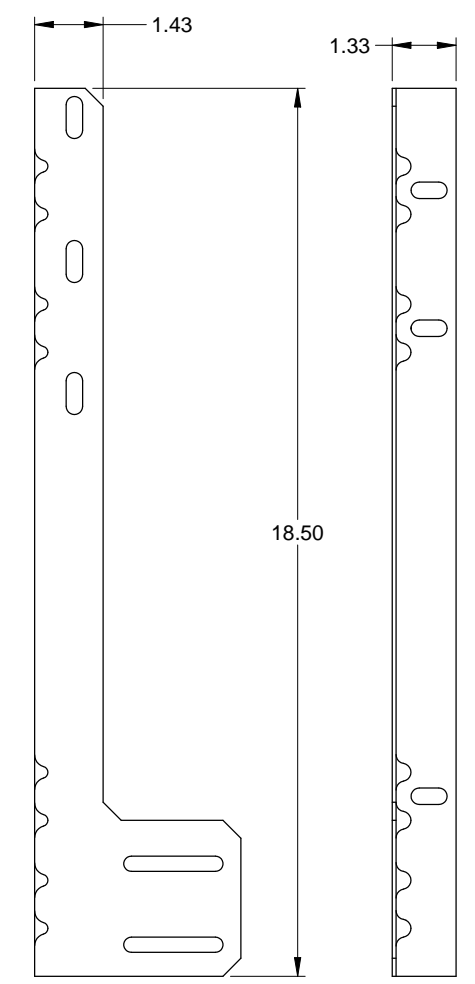
TOP FIXTURE  
.086 GALV. STEEL



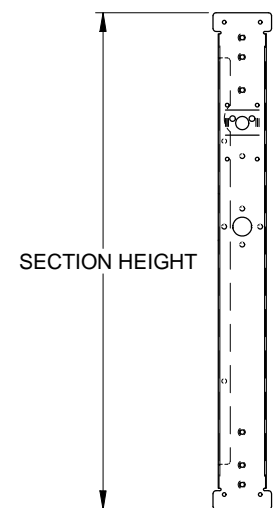
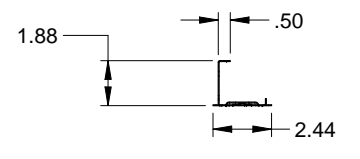
ROLLER CARRIER  
.086 GALV. STEEL  
ATTACHED TO TOP FIXTURE WITH  
(2) TRACK BOLTS AND WHIZ NUTS



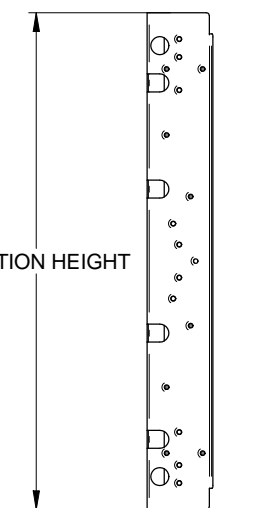
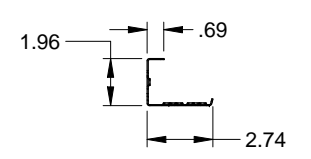
TRACK  
.086 GALV. STEEL



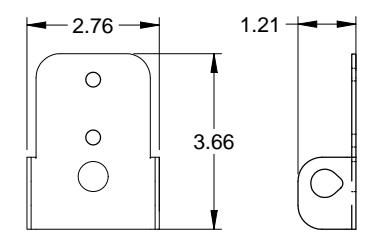
JAMB ANGLE  
.078 GALV. STEEL



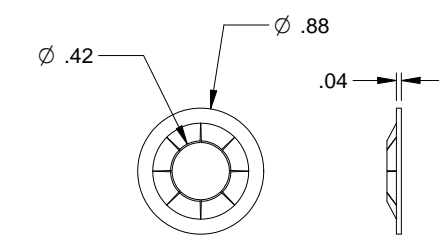
CENTER STILE  
.034 GALV. STEEL



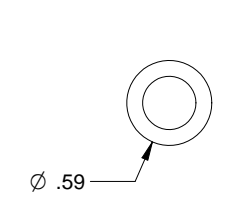
END STILE  
.043 GALV. STEEL



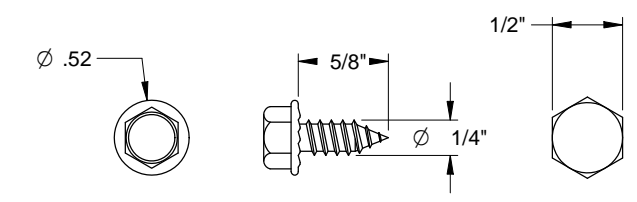
ROLLER CARRIER  
.086 GALV. STEEL



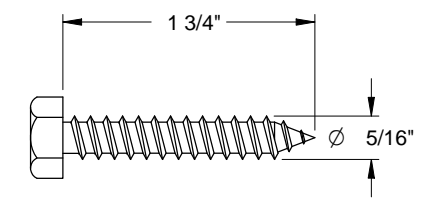
RETAINING NUT



TRACK BOLT



SHEET METAL SCREW



HEX HEAD LAG SCREW

Scott A. Brown P.E.  
F.P.E #65940  
698 Timber Creek Road  
Dixon Illinois 61021

REV.	DESCRIPTION	ECO	DATE

SCALE: NONE  
DRAWN BY: G. WEDEKIND  
CHECKED BY: G. WEDEKIND  
DATE: 10/22/12  
ECO: 6338.03



TITLE:  
SPEC, WINDLOAD  
BUILDMARK / TRADEMARK  
NO. P-2417  
SHEET 3 OF 3  
REV B