

Scott A. Brown P.E.  
F.P.E #65940  
698 Timber Creek Road  
Dixon Illinois 61021

REV.	DESCRIPTION	ECO	DATE
C	1) WAS RICHARD A BAUMANN, P.E., 2) UPDATED JAMB ATTACHMENT	7802.01	09/25/17
B	REMOVED IMPACT RESISTANT NOTE	7022.01	04/30/15
A	RELEASED FOR PRODUCTION	6338.03	10/18/12

TOLERANCES: DIMENSIONS ARE IN INCHES
TWO PLACE (.XX) ± .03
THREE PLACE (.XXX) ± .015
ANGLES ± 1°
UNLESS OTHERWISE SPECIFIED

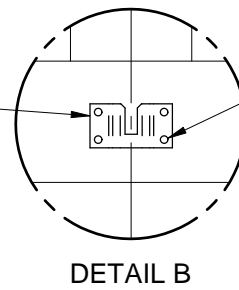
MATERIAL:
FINISH:

SCALE: None
DRAWN BY: G. Wedekind
CHECKED BY: G. Wedekind
DATE: 10/18/12
ECO: 6338.03



TITLE: SPEC, WINDLOAD BUILDMARK S / TRADEMARK 16' 0" WIDE	NO. P-2419	SHEET 1 OF 3	REV C
---	------------	--------------	-------

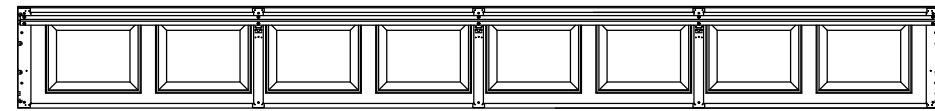
MAXIMUM LOAD ON HEADER POST BRACKET =  $(293 \times 8) / 2 = 1172$  LBS  
 MAXIMUM ALLOWABLE LOAD ON 5/16" X 1-3/4" LAG SCREW (SPF) =  $4 \times 307 = 1228$  LBS  
 MAXIMUM ALLOWABLE LOAD ON 5/16" X 1-3/4" LAG SCREW (SYP) =  $2 \times 460 = 1840$  LBS



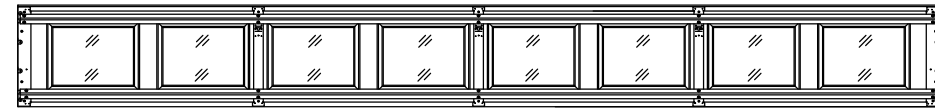
(4) 5/16" X 1-3/4" LAG SCREWS PER BRACKET

ADDITIONAL FASTENERS FOR POST LOADS ARE IN ADDITION TO THE STANDARD FASTENERS REQUIRED TO HOLD 2X6 IN PLACE

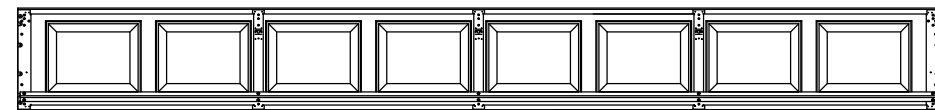
(4) 3/8" X 3" LAG SCREWS WITH 1 INCH O.D. WASHERS FOR POST LOADS



3 CENTER STILES, 1 U-BAR  
16' WIDE TOP WINDOW SECTION

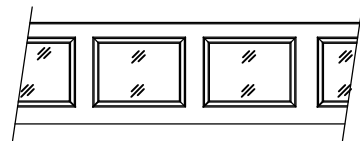


3 CENTER STILES, 2 U-BAR  
16' WIDE TOP OR INTERMEDIATE WINDOW SECTION



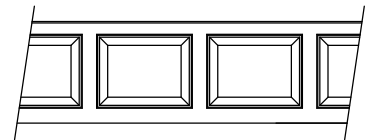
3 CENTER STILES, 1 U-BAR  
16' WIDE INTERMEDIATE AND BOTTOM SECTIONS

CENTER STILE AND U-BAR LAYOUT  
INTERIOR VIEW

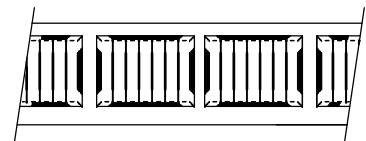


GLASS PANEL

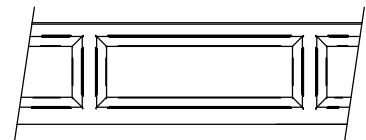
GLASS OPTIONS:  
1/8" DSB  
1/8" ACRYLIC  
1/8" TEMPERED  
1/2" INSULATED GLASS



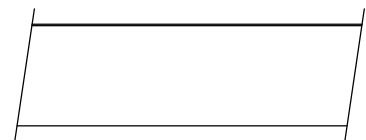
COLONIAL PANEL



CARRIAGE HOUSE PANEL

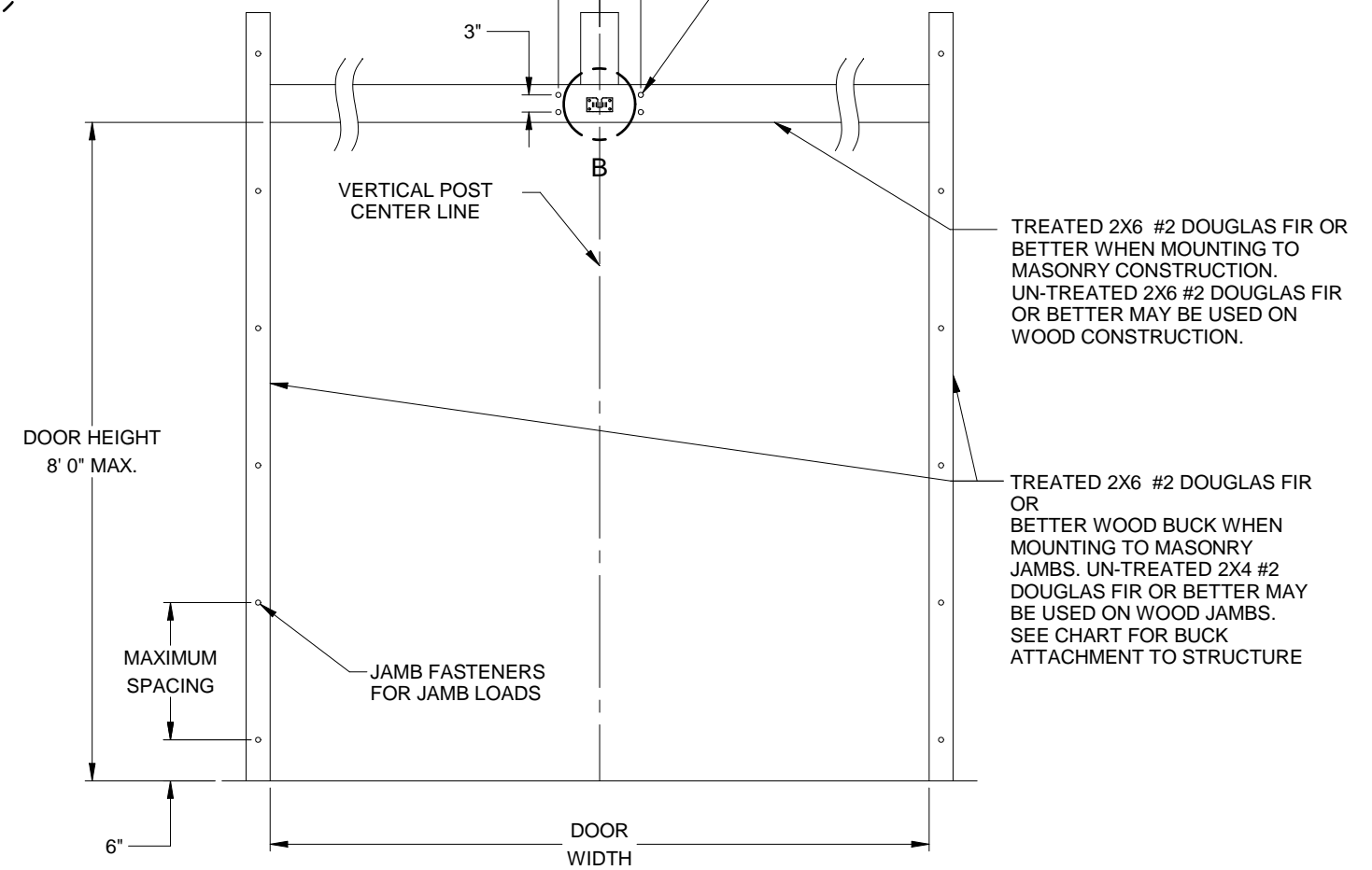


RANCH PANEL



FLUSH PANEL

PANEL OPTIONS  
EXTERIOR VIEW

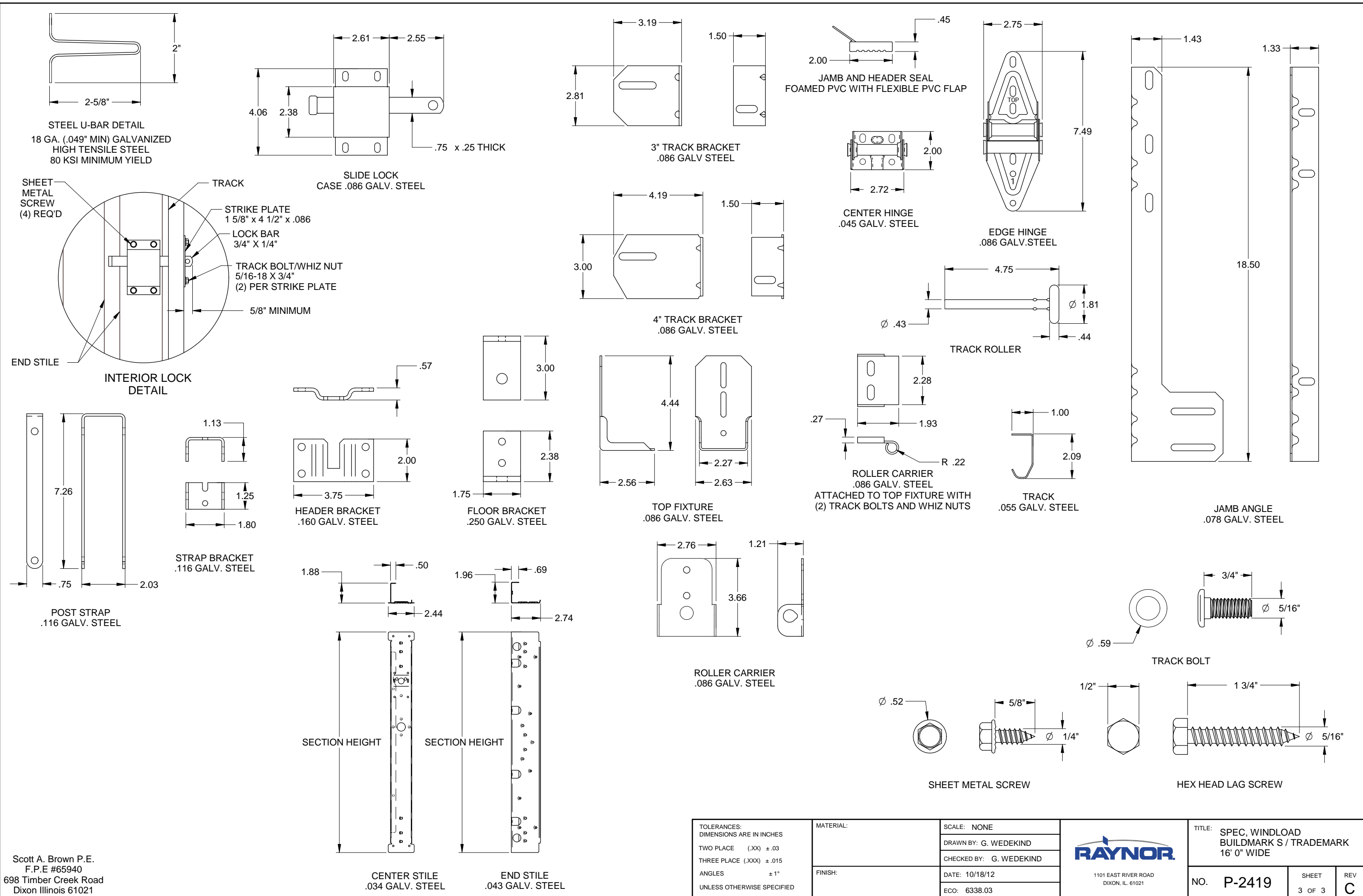


JAMB ATTACHMENT NOTES

1. MAXIMUM POSITIVE LOAD PER JAMB = 88 LBS PER FOOT
2. MAXIMUM NEGATIVE LOAD PER JAMB = 98 LBS PER FOOT.
3. MAXIMUM POSITIVE LOAD ON THE POST = 293 LBS PER FOOT.
4. MAXIMUM NEGATIVE LOAD ON THE POST = 326 LBS PER FOOT.
5. DESIGN OF THE SUPPORTING STRUCTURE SHALL BE THE SOLE RESPONSIBILITY OF THE BUILDING DESIGNER AND SHALL BE DESIGNED FOR THE JAMB LOADS LISTED IN NOTES 1, 2, 3 AND 4.
6. ALTERNATE JAMB ATTACHMENTS MAY BE USED IF APPROVED BY A REGISTERED PROFESSIONAL ENGINEER.
7. DASMA TECHNICAL DATA SHEET TDS-161 MAY BE USED FOR ALTERNATE JAMB ATTACHMENTS.

2X6 ATTACHMENT TO STRUCTURE

STRUCTURE TYPE	FASTENER TYPE	MINIMUM EMBEDMENT	MINIMUM EDGE DISTANCE	MINIMUM ON CENTER SPACING	DIMENSION A (MAXIMUM ON CENTER SPACING)	ALLOWABLE TENSION LOAD
2500 PSI MIN. CONCRETE	1/4" TAPCON+ (PLUS) WITH 1-1/8" OD WASHER	2"	2.5	6"	24"	691
SOUTHERN PINE	3/8" X 3" LAG WITH 1-1/8" OD WASHER	1.50"	1.50"	1.50"	24"	620
SPRUCE PINE FIR	3/8" X 3" LAG WITH 1-1/8" OD WASHER	1.50"	1.50"	1.50"	24"	482



Scott A. Brown P.E.  
 F.P.E #65940  
 698 Timber Creek Road  
 Dixon Illinois 61021

TOLERANCES: DIMENSIONS ARE IN INCHES TWO PLACE (.XX) ± .03 THREE PLACE (.XXX) ± .015 ANGLES ± 1° UNLESS OTHERWISE SPECIFIED	MATERIAL:	SCALE: NONE	<b>RAYNOR</b> 1101 EAST RIVER ROAD DIXON, IL. 61021	TITLE: SPEC, WINDLOAD BUILDMARK S / TRADEMARK 16' 0" WIDE		
	FINISH:	DRAWN BY: G. WEDEKIND		NO. P-2419	SHEET	REV
		CHECKED BY: G. WEDEKIND			3 OF 3	C
		DATE: 10/18/12				
	ECO: 6338.03					