

JAMB SCREW INSTALLATION METHOD:
 - UNIT MUST NOT BE IN DIRECT CONTACT WITH EITHER CONCRETE OR TREATED BUCK MATERIAL. IF SHIM SPACE IS LESS THAN 1/8", WINDOW FLASHING TAPE IS REQUIRED AS A BARRIER BETWEEN THE UNIT AND CONCRETE OR TREATED LUMBER
 - SECURE THE HEAD AND SIDE JAMBS WITH #8 X 3" SCREWS
 - SECURE THE SILL WITH #8 WOOD SCREWS OR 3/16" CONCRETE SCREWS
 - SCREWS MUST BE A MINIMUM OF 1" FROM EACH EDGE OF THE BUCK
 - SCREWS MUST HAVE A MINIMUM OF 1 1/4" OF PENETRATION INTO BUCK
 - SECURE THE JAMB STRIKE WITH 4 - #8 X 2 1/2" SCREWS
 - FOR STACKED UNITS ONLY- INSTALL 2- #8 X 2 1/2" SCREWS THRU EACH STATIONARY BRACKET

NOTES:
 1. FOR GENERAL SPECIFICATIONS, REFER TO DOC 00003952
 2. THIS PRINT IS FOR STRUCTURAL PERFORMANCE ONLY. FOR FLASHING & SEALING REQUIREMENTS, REFER TO THE INSTALLATION INSTRUCTIONS
 3. IF CHEMICALLY TREATED LUMBER IS USED FOR BUCK MATERIAL, FASTENERS INTO THE BUCK MUST BE A MINIMUM OF 0.90 OZ/FT² ZINC HOT DIPPED GALVANIZED OR STAINLESS STEEL TYPE 304 OR 316

UNIT	MAX PANEL WIDTH	CALL NUMBER	DP RATING
UL MLTSLDDR PKT	47 1/16	160100	+40/-40
UL MLTSLDDR STK	47 1/16	160100	+40/-40

3 PANEL DOORS SHOWN, APPLIES TO ALL DOOR CONFIGURATIONS AS LONG AS INDIVIDUAL PANEL SIZE DOES NOT EXCEED MAXIMUM PANEL SIZE AND TOTAL WIDTH DOES NOT EXCEED MAXIMUM DIMENSION FOR PRODUCT. FOR BI-PARTING STACKED AND POCKET UNITS, REFER TO SHEET 2 OF 3 AND 3 OF 3.

CATEGORY:
MULTI-SLIDE DOOR

UNIT TYPE:
UMSDSTK, UMSPDKT

ITEM	DWG NO	DESCRIPTION
5	---	SHIM
4	---	#8 X 2 1/2" FLAT HEAD WOOD SCREW
3	---	#8 X 3" PAN HEAD WOOD SCREW
2	---	2X WOOD BUCK BY OTHERS
1	---	#8 OR 3/16" MINIMUM SCREW

PARTS LIST

MARVIN RESEARCH & DEVELOPMENT

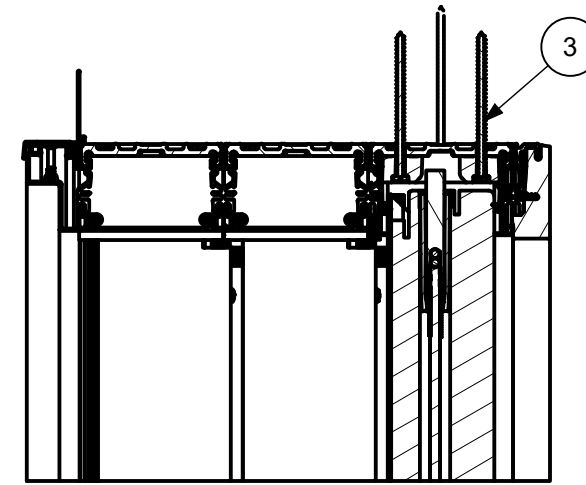
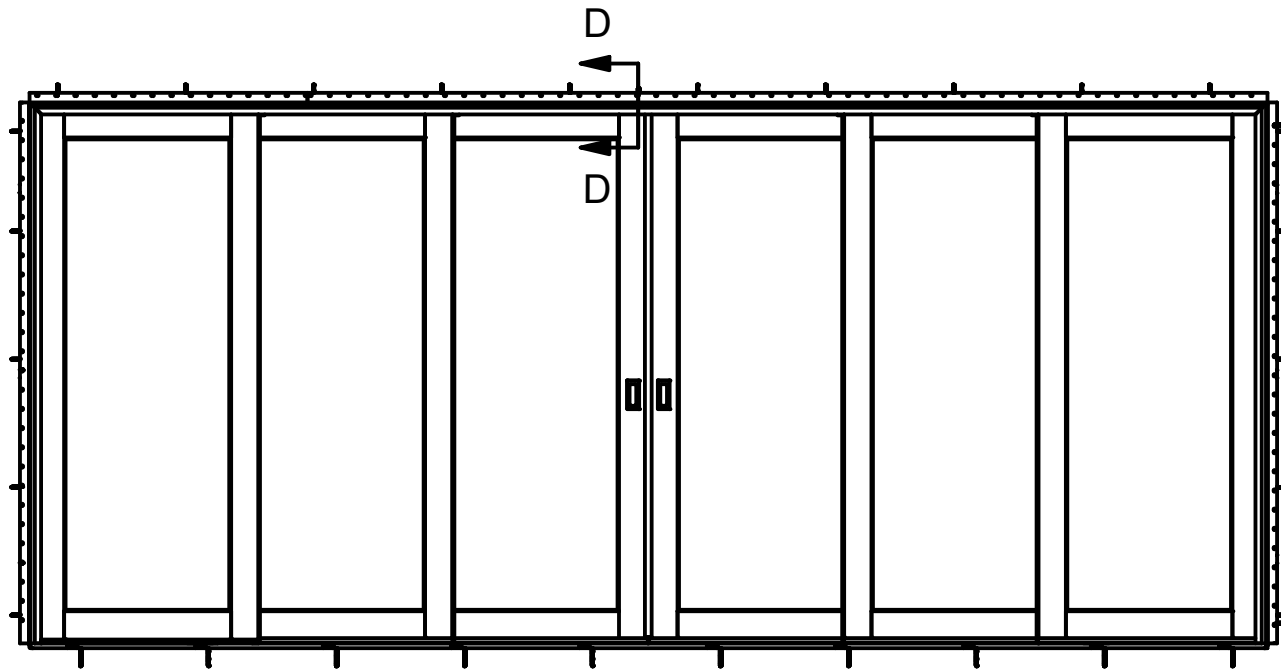
COLLECTION: ULTIMATE

DWG TYPE: INSTALLATION
DESCRIPTION: FL 14903

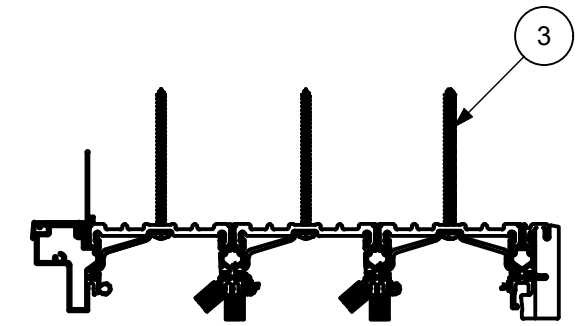
CHK:	SIZE: B	CLASS: MISC	DWG NO: 00095320
APP:	SCALE: 1:32	DATE: 4/9/2015	DWG BY: HASBROOK, RICHARD
			SHEET: 1 OF 3

Template Version 13.0

NOTICE - CONFIDENTIAL INFORMATION
 The information in this document is privileged and strictly confidential. The information contained herein shall be used only by Marvin employees and by those agents or suppliers granted official written permission. If the reader of this document is not the intended recipient, or the employee or agent of the intended recipient, please delete this document from all data storage devices, and destroy all hard copies. Any unauthorized dissemination, distribution, copying or other use of the information contained in this document is strictly prohibited.



SECTION D-D
HEAD JAMB



HEAD JAMB

- UNIT MUST NOT BE IN DIRECT CONTACT WITH EITHER CONCRETE OR TREATED BUCK MATERIAL. IF SHIM SPACE IS LESS THAN 1/8", WINDOW FLASHING TAPE IS REQUIRED AS A BARRIER BETWEEN THE UNIT AND CONCRETE OR TREATED LUMBER
- SECURE THE HEAD AND SIDE JAMBS WITH #8 X 3" SCREWS
- SECURE THE SILL WITH #8 WOOD SCREWS OR 3/16" CONCRETE SCREWS
- SCREWS MUST BE A MINIMUM OF 1" FROM EACH EDGE OF THE BUCK
- SCREWS MUST HAVE A MINIMUM OF 1 1/4" OF PENETRATION INTO BUCK
- SECURE THE JAMB STRIKE WITH 4 - #8 X 2 1/2 SCREWS

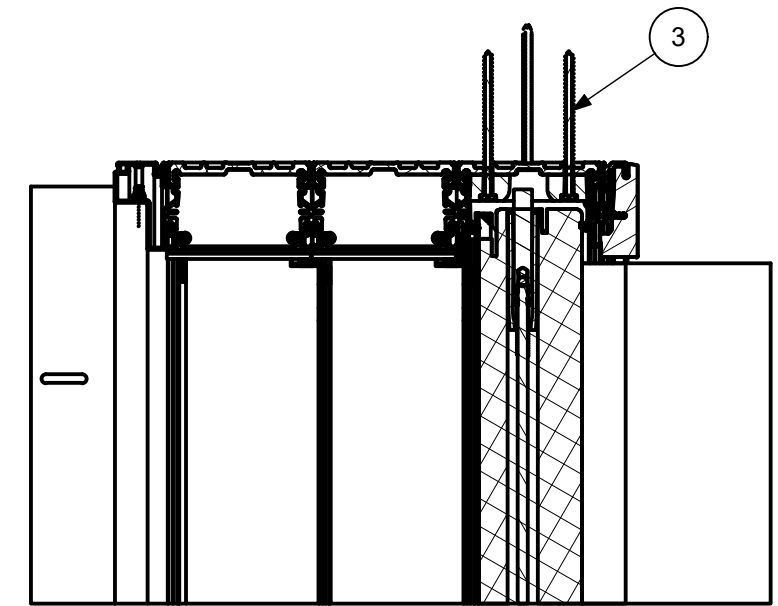
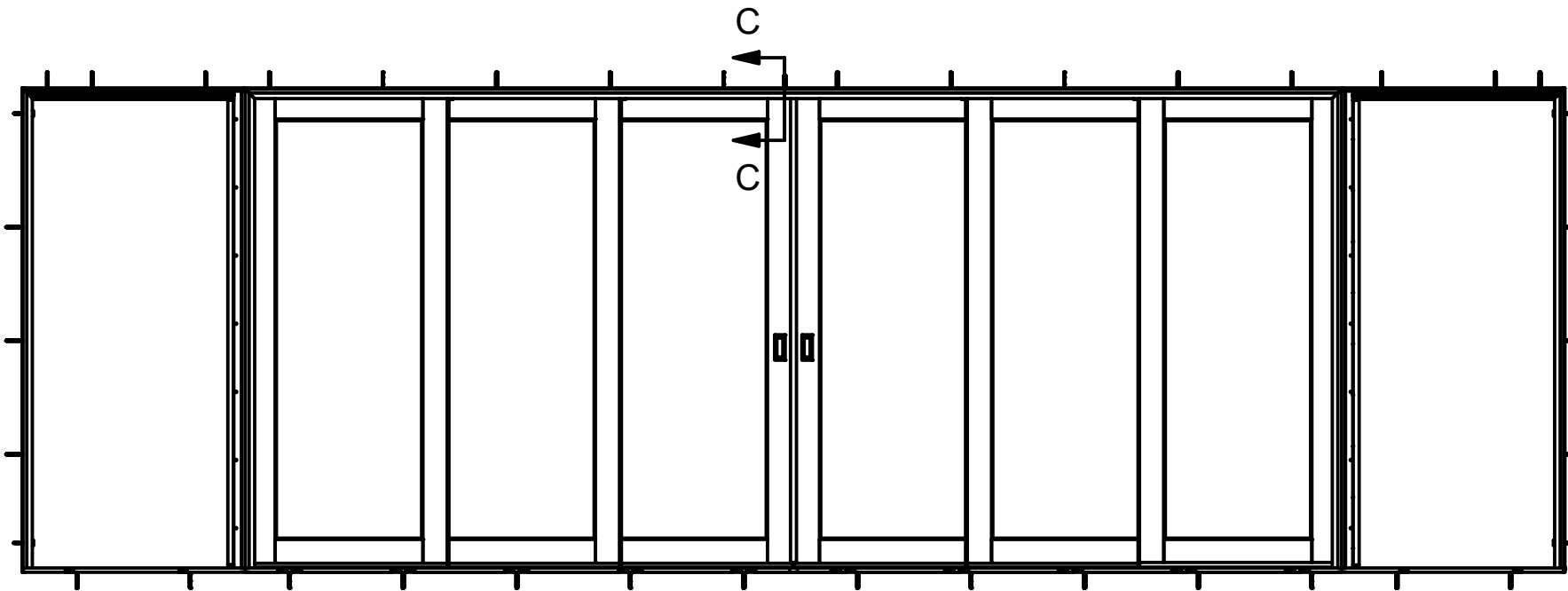
NOTES:

1. FOR GENERAL SPECIFICATIONS, REFER TO DOC 00003952
2. THIS PRINT IS FOR STRUCTURAL PERFORMANCE ONLY. FOR FLASHING & SEALING REQUIREMENTS, REFER TO THE INSTALLATION INSTRUCTIONS
3. IF CHEMICALLY TREATED LUMBER IS USED FOR BUCK MATERIAL, FASTENERS INTO THE BUCK MUST BE A MINIMUM OF 0.90 OZ/FT² ZINC HOT DIPPED GALVANIZED OR STAINLESS STEEL TYPE 304 OR 316

- JAMB SCREW INSTALLATION IS APPROVED FOR THE FOLLOWING PRODUCTS:
- 2 1/4 ULTIMATE MULTI SLIDE POCKET DOOR
 - 2 1/4 ULTIMATE MULTI SLIDE STACKED DOOR

6 PANEL DOORS SHOWN, APPLIES TO ALL DOOR CONFIGURATIONS AS LONG AS INDIVIDUAL PANEL SIZE DOES NOT EXCEED MAXIMUM PANEL SIZE AND TOTAL WIDTH DOES NOT EXCEED MAXIMUM DIMENSION FOR PRODUCT. FOR INSTALLATION DETAILS, REFER TO SHEET 1 OF 3.

MARVIN Windows and Doors		RESEARCH & DEVELOPMENT WARROAD, MN, USA, (218) 386-4021	
PRODUCT CATEGORY:		2 1/4 ULTIMATE MULTI SLIDE DOOR	
UNIT TYPE:		CMMSDS, CMMSDP	
DWG TYPE:		INSTALLATION	
DESCRIPTION:		FL 14903	
CHK:	SIZE:	CLASS:	DWG NO:
	B	MISC	00095320
APP:	SCALE:	DATE:	DWG BY:
	NA	04/10/15	HASBROOK, RICHARD
			SHEET:
			2 OF 3



SECTION C-C
HEAD JAMB

- UNIT MUST NOT BE IN DIRECT CONTACT WITH EITHER CONCRETE OR TREATED BUCK MATERIAL. IF SHIM SPACE IS LESS THAN 1/8", WINDOW FLASHING TAPE IS REQUIRED AS A BARRIER BETWEEN THE UNIT AND CONCRETE OR TREATED LUMBER
- SECURE THE HEAD AND SIDE JAMBS WITH #8 X 3" SCREWS
- SECURE THE SILL WITH #8 WOOD SCREWS OR 3/16" CONCRETE SCREWS
- SCREWS MUST BE A MINIMUM OF 1" FROM EACH EDGE OF THE BUCK
- SCREWS MUST HAVE A MINIMUM OF 1 1/4" OF PENETRATION INTO BUCK
- SECURE THE JAMB STRIKE WITH 4 - #8 X 2 1/2 SCREWS

JAMB SCREW INSTALLATION IS APPROVED FOR THE FOLLOWING PRODUCTS:
 - 2 1/4 ULTIMATE MULTI SLIDE POCKET DOOR
 - 2 1/4 ULTIMATE MULTI SLIDE STACKED DOOR

6 PANEL DOORS SHOWN, APPLIES TO ALL DOOR CONFIGURATIONS AS LONG AS INDIVIDUAL PANEL SIZE DOES NOT EXCEED MAXIMUM PANEL SIZE AND TOTAL WIDTH DOES NOT EXCEED MAXIMUM DIMENSION FOR PRODUCT. FOR INSTALLATION DETAILS, REFER TO SHEET 1 OF 3.

NOTES:

1. FOR GENERAL SPECIFICATIONS, REFER TO DOC 00003952
2. THIS PRINT IS FOR STRUCTURAL PERFORMANCE ONLY. FOR FLASHING & SEALING REQUIREMENTS, REFER TO THE INSTALLATION INSTRUCTIONS
3. IF CHEMICALLY TREATED LUMBER IS USED FOR BUCK MATERIAL, FASTENERS INTO THE BUCK MUST BE A MINIMUM OF 0.90 OZ/FT² ZINC HOT DIPPED GALVANIZED OR STAINLESS STEEL TYPE 304 OR 316

MARVIN Windows and Doors		RESEARCH & DEVELOPMENT WARROAD, MN, USA, (218) 386-4021	
PRODUCT		2 1/4 ULTIMATE MULTI SLIDE DOOR	
CATEGORY:			
UNIT TYPE:		CMMSDS, CMMSDP	
DWG TYPE:		INSTALLATION	
DESCRIPTION: FL 14903			
CHK:	SIZE: B	CLASS: MISC	DWG NO: 00095320
APP:	SCALE: NA	DATE: 04/10/15	DWG BY: HASBROOK, RICHARD
			SHEET: 3 OF 3