

JAMB SCREW INSTALLATION METHOD:

- UNIT OR WOOD SLOPE MUST NOT BE IN DIRECT CONTACT WITH EITHER CONCRETE OR TREATED BUCK MATERIAL. IF SHIM SPACE IS LESS THAN 1/8", WINDOW FLASHING TAPE IS REQUIRED AS A BARRIER BETWEEN THE UNIT AND CONCRETE OR TREATED LUMBER
- SECURE THE HEAD AND SIDE JAMBS WITH #8 X 3" SCREWS
- SECURE THE SILL WITH #8 WOOD SCREWS
- SECURE THE JAMB STRIKE WITH 4 - #8 X 2 1/2" SCREWS
- SECURE THE WOOD SLOPE TO SUB FLOOR WITH # 8 WOOD SCREWS OR 3/16" CONCRETE SCREWS
- SECURE STATIONARY PANEL WITH 2 #8 X 2 1/2" SCREWS THROUGH EACH STATIONARY BRACKET PLACED 12" O.C.

NOTES:


1. FOR GENERAL SPECIFICATIONS, REFER TO DOC 00003952
2. THIS PRINT IS FOR STRUCTURAL PERFORMANCE ONLY. FOR FLASHING & SEALING REQUIREMENTS, REFER TO THE INSTALLATION INSTRUCTIONS
3. IF CHEMICALLY TREATED LUMBER IS USED FOR BUCK MATERIAL, FASTENERS INTO THE BUCK MUST BE A MINIMUM OF 0.90 OZ/FT² ZINC HOT DIPPED GALVANIZED OR STAINLESS STEEL TYPE 304 OR 316

3 PANEL DOORS SHOWN, APPLIES TO ALL DOOR CONFIGURATIONS AS LONG AS INDIVIDUAL PANEL SIZE DOES NOT EXCEED MAXIMUM PANEL SIZE AND TOTAL WIDTH DOES NOT EXCEED MAXIMUM DIMENSION FOR PRODUCT.
FOR BI-PARTING STACKED AND POCKET UNITS, REFER TO SHEET 2 OF 3 AND 3 OF 3

UNIT	MAX PANEL WIDTH	CALL NUMBER	DP RATING
UL MLTSLDDR STK HP	47 1/16	160100	+45/-50
UL MLTSLDDR STK HP	47 1/16	120100	+55/-55
UL MLTSLDDR STK HP	47 1/16	16080	+55/-65
UL MLTSLDDR PKT HP	47 1/16	80100	+55/-65
UL MLTSLDDR PKT HP	47 1/16	8080	+55/-65

CATEGORY:
MULTI-SLIDE DOOR

UNIT TYPE:
UMSDPKT, UMSDSTK

MARVIN  **RESEARCH & DEVELOPMENT**

COLLECTION: ULTIMATE

DWG TYPE: INSTALLATION
DESCRIPTION: MULTI PANEL HP

CHK:	SIZE: B	CLASS: MISC	DWG NO: 00095763
APP:	SCALE: NA	DATE: 05/14/15	DWG BY: HASBROOK, RICHARD

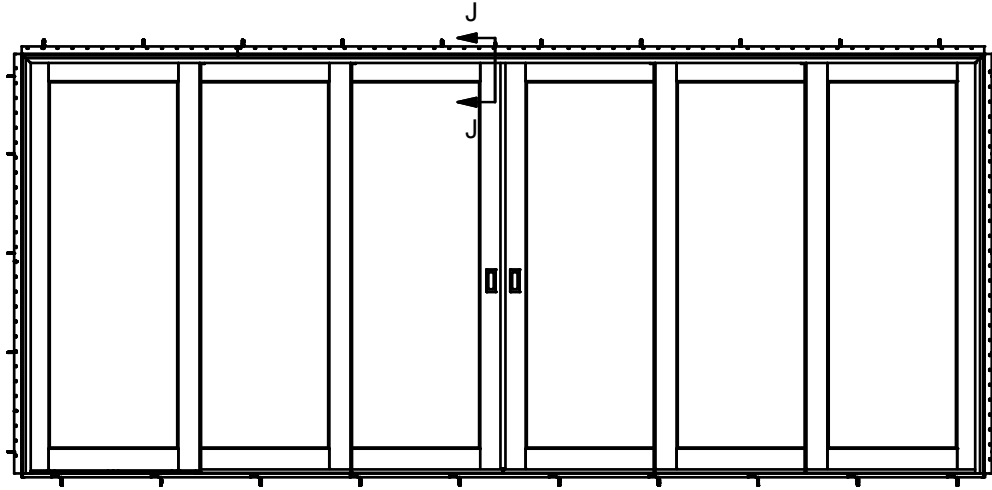
SHEET: 1 OF 3

ITEM	DWG NO	DESCRIPTION
6	-----	WOOD SLOPE
5	-----	SHIM
4	-----	#8 X 2 1/2" FLAT HEAD WOOD SCREW
3	-----	#8 X 3" PAN HEAD WOOD SCREW
2	-----	2X WOOD BUCK BY OTHERS
1	-----	#8 X 1 3/4" PAN HEAD WOOD SCREW

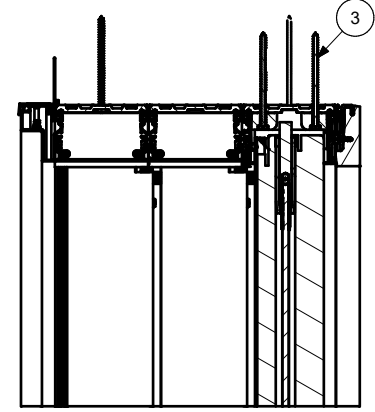
PARTS LIST

NOTICE - CONFIDENTIAL INFORMATION

The information in this document is privileged and strictly confidential. The information contained herein shall be used only by Marvin employees and by those agents or suppliers granted official written permission. If the reader of this document is not the intended recipient, or the employee or agent of the intended recipient, please delete this document from all data storage devices, and destroy all hard copies. Any unauthorized dissemination, distribution, copying or other use of the information contained in this document is strictly prohibited.



STACKED



SECTION J-J
HEAD JAMB

CATEGORY:
MULTI-SLIDE DOOR

UNIT TYPE:
UMSDPKT, UMSDSTK


JAMB SCREW INSTALLATION METHOD:

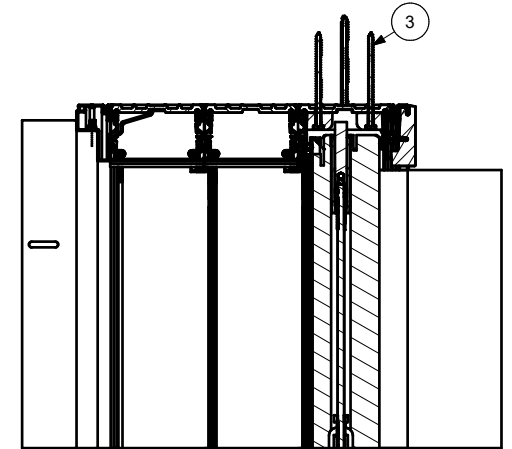
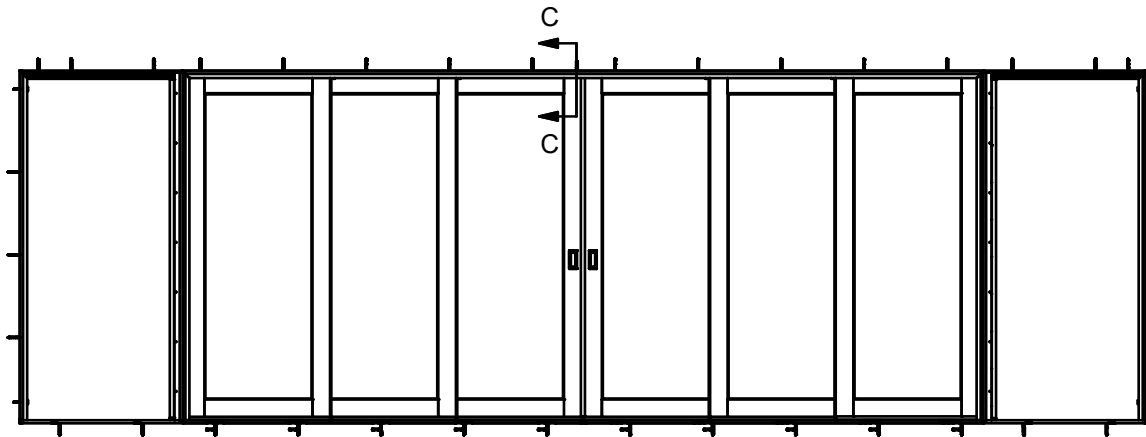
- UNIT OR WOOD SLOPE MUST NOT BE IN DIRECT CONTACT WITH EITHER CONCRETE OR TREATED BUCK MATERIAL. IF SHIM SPACE IS LESS THAN 1/8", WINDOW FLASHING TAPE IS REQUIRED AS A BARRIER BETWEEN THE UNIT AND CONCRETE OR TREATED LUMBER
- SECURE THE HEAD AND SIDE JAMBS WITH #8 X 3" SCREWS
- SECURE THE SILL WITH #8 WOOD SCREWS
- SECURE THE JAMB STRIKE WITH 4 - #8 X 2 1/2 SCREWS
- SECURE THE WOOD SLOPE TO SUB FLOOR WITH # 8 WOOD SCREWS OR 3/16" CONCRETE SCREWS

NOTES:

1. FOR GENERAL SPECIFICATIONS, REFER TO DOC 00003952
2. THIS PRINT IS FOR STRUCTURAL PERFORMANCE ONLY. FOR FLASHING & SEALING REQUIREMENTS, REFER TO THE INSTALLATION INSTRUCTIONS
3. IF CHEMICALLY TREATED LUMBER IS USED FOR BUCK MATERIAL, FASTENERS INTO THE BUCK MUST BE A MINIMUM OF 0.90 OZ/FT² ZINC HOT DIPPED GALVANIZED OR STAINLESS STEEL TYPE 304 OR 316

2 AND 6 PANEL DOORS SHOWN, APPLIES TO ALL DOOR CONFIGURATIONS AS LONG AS INDIVIDUAL PANEL SIZE DOES NOT EXCEED MAXIMUM PANEL SIZE AND TOTAL WIDTH DOES NOT EXCEED MAXIMUM DIMENSION FOR PRODUCT.

MARVIN 		RESEARCH & DEVELOPMENT	
COLLECTION: ULTIMATE			
DWG TYPE: INSTALLATION			
DESCRIPTION: MULTI PANEL HP			
CHK:	SIZE: B	CLASS: MISC	DWG NO: 00095763
APP:	SCALE: NA	DATE: 05/14/15	DWG BY: HASBROOK, RICHARD
			SHEET: 2 OF 3



SECTION C-C
HEAD JAMB

JAMB SCREW INSTALLATION METHOD:

- UNIT OR WOOD SLOPE MUST NOT BE IN DIRECT CONTACT WITH EITHER CONCRETE OR TREATED BUCK MATERIAL. IF SHIM SPACE IS LESS THAN 1/8", WINDOW FLASHING TAPE IS REQUIRED AS A BARRIER BETWEEN THE UNIT AND CONCRETE OR TREATED LUMBER
- SECURE THE HEAD AND SIDE JAMBS WITH #8 X 3" SCREWS
- SECURE THE SILL WITH #8 WOOD SCREWS
- SECURE THE JAMB STRIKE WITH 4 - #8 X 2 1/2 SCREWS
- SECURE THE WOOD SLOPE TO SUB FLOOR WITH # 8 WOOD SCREWS OR 3/16" CONCRETE SCREWS


NOTES:

1. FOR GENERAL SPECIFICATIONS, REFER TO DOC 00003952
2. THIS PRINT IS FOR STRUCTURAL PERFORMANCE ONLY. FOR FLASHING & SEALING REQUIREMENTS, REFER TO THE INSTALLATION INSTRUCTIONS
3. IF CHEMICALLY TREATED LUMBER IS USED FOR BUCK MATERIAL, FASTENERS INTO THE BUCK MUST BE A MINIMUM OF 0.90 OZ/FT² ZINC HOT DIPPED GALVANIZED OR STAINLESS STEEL TYPE 304 OR 316

6 PANEL DOOR SHOWN, APPLIES TO ALL DOOR CONFIGURATIONS AS LONG AS INDIVIDUAL PANEL SIZE DOES NOT EXCEED MAXIMUM PANEL SIZE AND TOTAL WIDTH DOES NOT EXCEED MAXIMUM DIMENSION FOR PRODUCT.

CATEGORY:
MULTI-SLIDE DOOR

UNIT TYPE:
UMSDPKT, UMSDSTK

MARVIN 		RESEARCH & DEVELOPMENT	
COLLECTION: ULTIMATE			
DWG TYPE: INSTALLATION			
DESCRIPTION: MULTI PANEL HP			
CHK:	SIZE: B	CLASS: MISC	DWG NO: 00095763
APP:	SCALE: NA	DATE: 05/14/15	DWG BY: HASBROOK, RICHARD
			SHEET: 3 OF 3