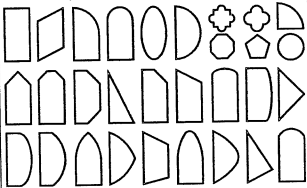


GENERAL NOTES:

1. THIS PRODUCT HAS BEEN TESTED, ANALYZED & APPROVED FOR DESIGN PRESSURES NOT TO EXCEED THOSE SHOWN IN THE "ALLOWABLE DESIGN PRESSURE TABLE(S)".
2. OPENINGS, BUCKING & BUCKING FASTENERS MUST BE PROPERLY DESIGNED & INSTALLED TO TRANSFER WIND LOADS TO THE STRUCTURE.
3. ALL HARDWARE & FASTENERS SHALL BE IN ACCORDANCE WITH THESE DRAWINGS & SHALL NOT VARY UNLESS SPECIFICALLY MENTIONED ON THE DRAWINGS. SPECIFIED ANCHOR EMBED TO BASE MATERIAL SHALL BE BEYOND WALL FINISH OR STUCCO.
4. THIS PRODUCT HAS BEEN DESIGNED IN ACCORDANCE WITH AND MEETS THE REQUIREMENTS OF THE FLORIDA BUILDING CODE (FBC) INCLUDING HIGH VELOCITY HURRICANE ZONES (HVHZ) & IS LARGE MISSILE IMPACT RATED.
5. IMPACT SHUTTERS ARE NOT REQUIRED WITH THIS PRODUCT.
6. ALL ANCHORS SECURING PRODUCT FRAMES TO PRESSURE TREATED BUCKS OR WOOD FRAMING SHALL BE CAPABLE OF RESISTING CORROSION CAUSED BY THE PRESSURE TREATING CHEMICALS IN THE WOOD.
7. DETERMINE THE POSITIVE & NEGATIVE DESIGN LOADS TO USE WHEN REFERENCING THESE DOCUMENTS IN ACCORDANCE WITH THE GOVERNING CODE AND GOVERNING WIND VELOCITY. FOR WIND LOAD CALCULATIONS IN ACCORDANCE WITH THE FLORIDA BUILDING CODE, A DIRECTIONALITY FACTOR OF $K_d = 0.85$ MAY BE APPLIED PER THE ASCE-7 STANDARD.
8. MATERIALS, INCLUDING BUT NOT LIMITED TO STEEL SCREWS, THAT COME INTO CONTACT WITH OTHER DISSIMILAR MATERIALS SHALL MEET THE REQUIREMENTS OF FLORIDA BUILDING CODE.
9. TO THE BEST OF OUR KNOWLEDGE, THE PRODUCT SHOWN HEREIN IS QUALITY ASSURED BY A FLORIDA STATE APPROVED CERTIFICATION/OA ENTITY & SHALL BE LABELED IN ACCORDANCE WITH THE FBC AND THE FLORIDA DEPARTMENT OF BUSINESS & PROFESSIONAL REGULATION SPECIFICATIONS. THESE DRAWINGS SHOW ALL APPLICABLE ELEVATION, COMBINATION, INSTALLATION & COMPARATIVE ANALYSIS CONDITIONS AS DETERMINED THROUGH TESTING & ENGINEERING RATIONAL ANALYSIS. PRODUCT ASSEMBLY SHALL BE IN ACCORDANCE WITH THESE DRAWINGS, THE MANUFACTURER'S QUALITY ASSURANCE SPECIFICATIONS & TESTING REPORTS.
10. CERTIFICATION OF THIS PRODUCT SHALL BE CONSIDERED VOID IF IT IS INSTALLED WITHOUT A BUILDING PERMIT FROM THE APPLICABLE LOCAL BUILDING DEPARTMENT OR IF IT IS INSTALLED BY ANYONE OTHER THAN A LICENSED CONTRACTOR EXPERIENCED WITH INSTALLATIONS OF THIS TYPE OF PRODUCT.
11. ALL WOOD MEMBERS OF THIS PRODUCT THAT MAY POSSIBLY COME INTO CONTACT WITH MASONRY OR CONCRETE SUBSTRATES, ARE SUBJECT TO MOISTURE &/OR ARE SUBJECT TO THE OUTSIDE ENVIRONMENT SHALL BE OF AN APPROVED DURABLE SPECIES OR BE TREATED IN AN APPROVED METHOD WITH AN APPROVED PRESERVATIVE PER FBC REQUIREMENTS.

APPROVED SHAPES



NOTES:

1. OTHER SHAPES MAY APPLY PROVIDING THEY ARE SIMILAR TO THOSE SHOWN & HAVE CORNER CONSTRUCTION PER CORNER DETAILS.
2. ALL SHAPED UNITS MUST FIT INSCRIBED INTO THE ALLOWABLE RECTANGULAR UNITS & BE GOVERNED BY THE ALLOWABLE PRESSURE OF THE RESPECTIVE RECTANGULAR UNIT.

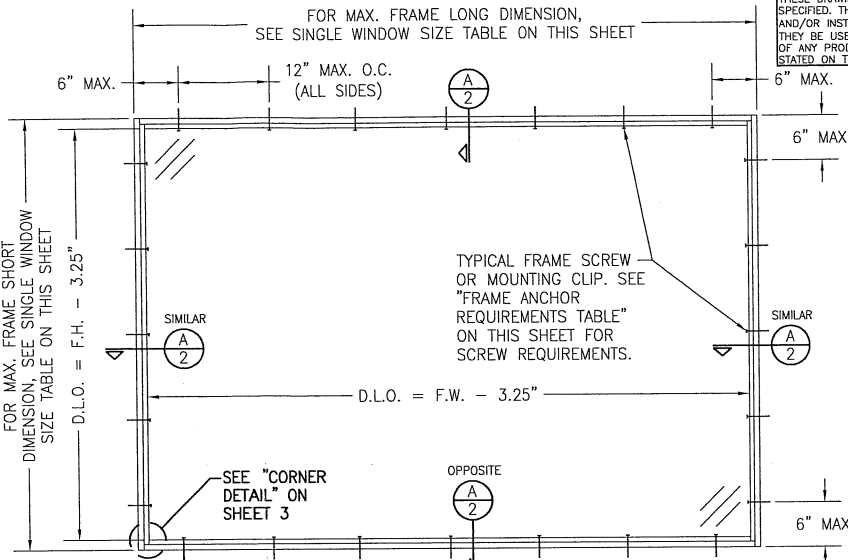
EVALUATION OF THIS PRODUCT IS BASED ON APPLICABLE STANDARDS AND/OR INFORMATION & RESULTS FROM APPLICABLE TEST REPORTS. THE FLORIDA BUILDING CODE VERSION CONSIDERED WITH THIS EVALUATION WAS THAT IN FORCE AT THE TIME OF THE EVALUATION. IN THE EVENT OF CODE VERSION CHANGES/UPDATES OR IN THE EVENT THAT NEW OR ADDITIONAL TESTING IS COMPLETED ON THIS PRODUCT, PRIOR TO STATING CODE COMPLIANCE WITH THE STATE, THE MANUFACTURER SHALL CONFIRM WITH THE EVALUATION ENGINEER OF RECORD THAT EVERYTHING SPECIFIED HERE-IN IS CURRENT WITH ALL CURRENT TESTING, CODES AND APPLICABLE STANDARDS.

ALTERNATE ANCHOR/SUBSTRATE EVALUATION NOTE:
ALL ALTERNATE ANCHORS IN THEIR SPECIFIED SUBSTRATES HAVE BEEN ANALYZED IN ACCORDANCE WITH THEIR APPLICABLE STANDARD(S) AND ARE FOUND TO BE EQUIVALENT TO OR STRONGER THAN THE ANCHOR(S) USED IN TESTING WITH THIS PRODUCT.

FRAME ANCHOR REQUIREMENTS TABLE

OPENING TYPE (SUBSTRATE)	FRAME/CLIP TO OPENING FASTENER TYPE	MINIMUM EMBED	MINIMUM EDGE DIST.
FRAME SCREWS			
MIN. 2X4 WOOD FRAME OR BUCK (MIN. GR. 3 & G=0.55)	NO. 10 SMS OR WOOD SCREW	1 1/4"	3/4"
MIN. 18 GA. 33 KSI METAL STUD	NO. 10 GR. 5 SELF TAP/DRILL SCREW	FULL	1/2"
MIN. 1/8" THK A36 STEEL	NO. 10 GR. 5 SELF TAP/DRILL SCREW	FULL	1/2"
MIN. 1/8" THK 6063-T5 ALUM.	NO. 10 GR. 5 SELF TAP/DRILL SCREW	FULL	1/2"
MIN. C-90 CMU OR 2500 PSI CONCRETE	(1) 1/4" CONCRETE SCREW	1 1/4"	2"
MOUNTING CLIP SCREWS			
MIN. 2X4 WOOD FRAME OR BUCK (MIN. GR. 3 & G=0.55)	NO. 8 SMS SCREW	1 3/8"	1/2"
MIN. 18 GA. 33 KSI METAL STUD	NO. 8 GR. 5 SELF TAP/DRILL SCREW	FULL	1/2"
MIN. 1/8" THK A36 STEEL	NO. 8 GR. 5 SELF TAP/DRILL SCREW	FULL	1/2"
MIN. 1/8" THK 6063-T5 ALUM.	NO. 8 GR. 5 SELF TAP/DRILL SCREW	FULL	1/2"

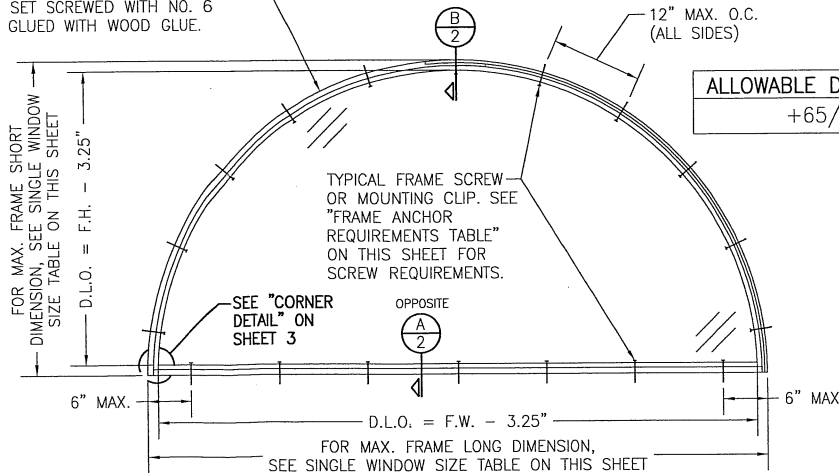
(1) CONCRETE SCREWS SHALL BE ELCO ULTRACONS, ELCO CRETE-FLEX, ITW RAMSET/RED HEAD TAPCONS OR HILTI KWIK-CON II (HARDENED STEEL OR S.S.).



EXTERIOR ELEVATION RECTANGULAR WINDOW

SCALE: 3/4"=1'-0" (LONG DIMENSION MAY BE HORIZONTAL OR VERTICAL)

FOR LARGE UNITS WHERE THE BENT JAMB REQUIRES MORE THAN ONE SECTION LENGTH, THE JAMB SHALL BE RABBETED (11" LONG RABBIT JOINT), SET SCREWED WITH NO. 6 SCREWS AND GLUED WITH WOOD GLUE.



EXTERIOR ELEVATION HALF ROUND WINDOW

(OTHER RADIUS/CURVE SHAPES SIMILAR)
SCALE: 3/4"=1'-0" (LONG DIMENSION MAY BE HORIZONTAL OR VERTICAL)

THESE DRAWINGS ARE APPLICABLE ONLY TO THE PRODUCT SPECIFIED. THEY MAY NOT BE USED FOR THE ASSEMBLY AND/OR INSTALLATION OF ANY OTHER PRODUCT NOR MAY THEY BE USED FOR RATIONAL AND/OR LOCAL APPROVAL OF ANY PRODUCT NOT PRODUCED BY THE MANUFACTURER STATED ON THESE DRAWINGS.

ALLOWABLE SIZE TABLE (SINGLE WINDOW)

MAXIMUM FRAME LONG DIMENSION (IN.)	MAXIMUM FRAME SHORT DIMENSION (IN.)
144	34
132	37
120	40
108	45
98	50
96	51
90	54
84	58
78	62
72	68
70	70

1. ALL SIZES IN TABLE ARE BASED ON TESTED SIZES & DO NOT EXCEED THE WINDOW AREA TESTED.
2. LONG DIMENSION MAY BE HORIZONTAL OR VERTICAL
3. DIMENSIONS SHOWN ARE +/- 1/2".

ALLOWABLE DESIGN PRESSURE
+65/-75 PSF

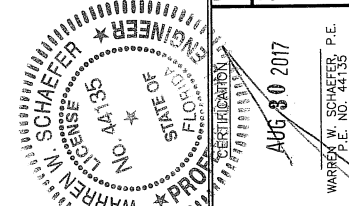
DRAWN BY: W.W.S.	CHECKED BY: W.W.S.
DATE: 01/09/15	DATE: 10/31/11
PLT: 1=16	

NO.	REVISION DESCRIPTION	DATE	BY	W.W.S.	W.W.S.
AT	UPDATE TO CURRENT STANDARDS	08/24/17			
BT	CORRECTED IG GLASS INFO				

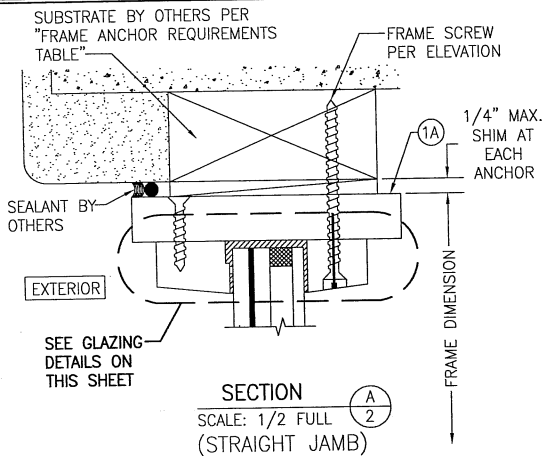
SIGNATURE DOOR, INC.
401 PRIORITY STREET
ALTOONA, PA 16602
800-741-2265

DIRECT GLAZED IMPACT WINDOW MANUFACTURER

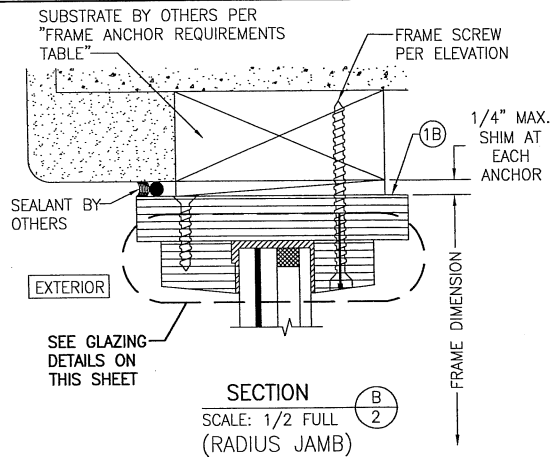
CONSULTANTS
W. W. SCHAEFER ENGINEERING & CONSULTING, P.A. (CA 6809)
7480 150TH COURT NORTH, 33418
PALM BEACH GARDENS, FL
PHONE: 301-744-3624



DRAWING NO. 1780	REV. B
SHEET NO. 1	OF 3

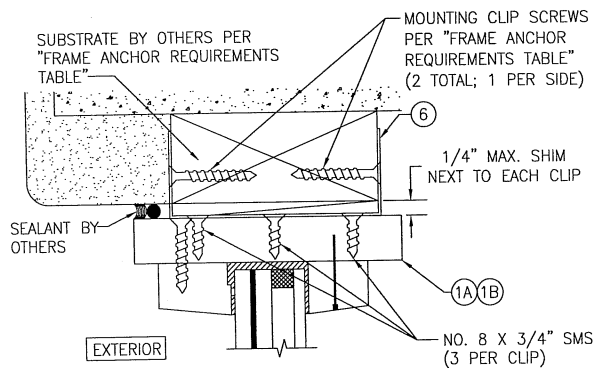


SECTION A
SCALE: 1/2 FULL
(STRAIGHT JAMB)

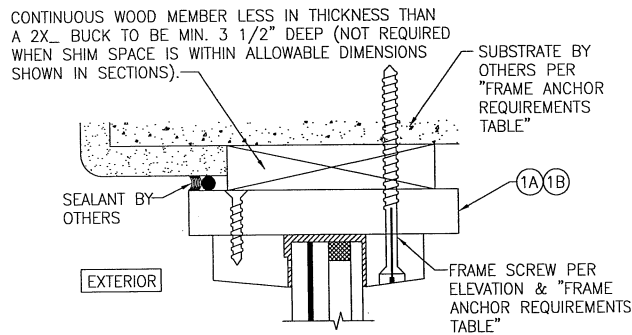


SECTION B
SCALE: 1/2 FULL
(RADIUS JAMB)

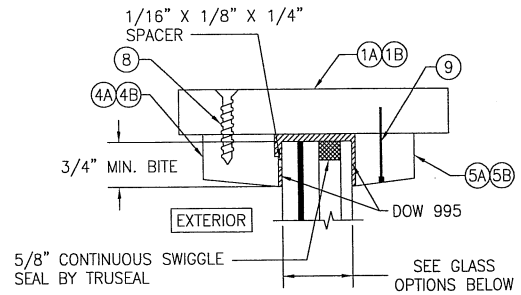
NOTE: A DECORATIVE BRICK MOLD MAY BE USED AT INTERIOR OR EXTERIOR TO FINISH OFF FRAMING.



OPTIONAL MOUNTING CLIP DETAIL
(HEAD SECTION SHOWN; SILL & SIDES ARE INSTALLED THE SAME)
(FOR DETAIL NOT SHOWN, SEE OTHER SECTIONS)



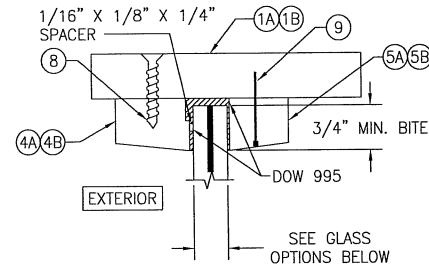
OPTIONAL DIRECT MOUNT DETAIL TO SUBSTRATE WITH SPACER
(HEAD SECTION SHOWN; SILL & SIDES ARE INSTALLED THE SAME)
(FOR DETAIL NOT SHOWN, SEE OTHER SECTIONS)



TYPICAL GLAZING DETAIL
(I.G. CONDITION)

GLASS OPTIONS:
OPTION 1: 1 1/4" THICK I.G. GLASS (1/4" AN./0.10 GLASSLAM SAFETY PLUS II POLYURETHANE POLYMER/1/4 AN. EXTERIOR; 5/8" SPACER; 3/16" TEMPERED INTERIOR)
OPTION 2: 1 3/16" THICK I.G. GLASS (1/4" AN./0.75 EASTMAN CHEM. CO. SAFLEX CP/1/4 AN. EXTERIOR; 5/8" SPACER; 3/16" TEMPERED INTERIOR)

NOTE: THE SINGLE PANE OF THE IG GLASS SHALL BE TEMPERED WHEN REQUIRED BY THE FLORIDA BUILDING CODE TO BE SAFETY GLAZED.



TYPICAL GLAZING DETAIL
(NON-I.G. CONDITION)

GLASS OPTIONS:
OPTION 3: 5/8" LAMINATED GLASS (1/4 AN./0.10 GLASSLAM SAFETY PLUS II POLYURETHANE POLYMER/1/4 AN.)
OPTION 4: 9/16" LAMINATED GLASS (1/4" AN./0.75 EASTMAN CHEM. CO. SAFLEX CP/1/4 AN.)

NOTE: AT A MINIMUM, ALL GLASS GREATER IN WIDTH THAN 36" SHALL BE SHIMMED AT THE BASE WITH SETTING BLOCKS PER THE REQUIREMENTS OF THE FBC.

DRAWN BY:	W.R.M.	CHECKED BY:	W.W.S.
PLOT:	1-2	DATE:	10/31/11
NO.			
REVISION DESCRIPTION			
BY			
DATE			

SIGNATURE DOOR, INC.
 401 PRIORITY STREET
 ALTOONA, PA 16602
 800-741-2265

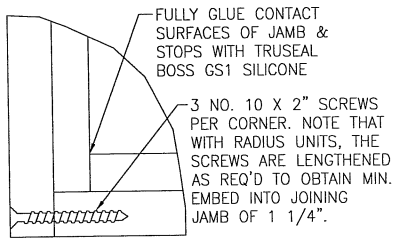
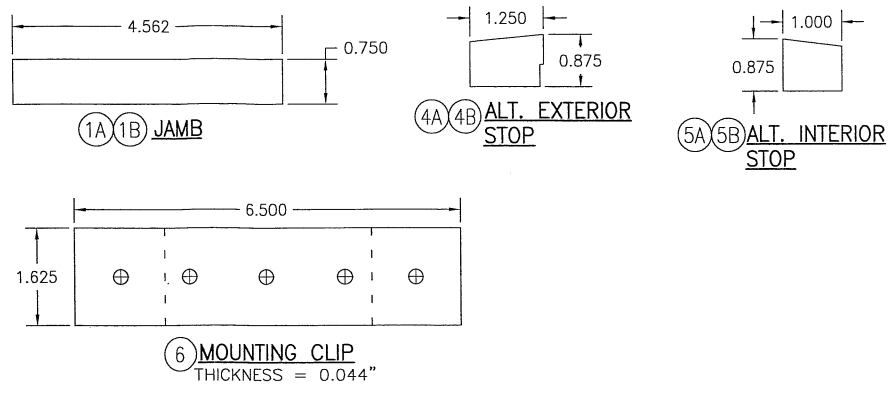
W. W. SCHAEFER ENGINEERING & CONSULTING, P.A. (CA 6809)
 7480 150TH COURT NORTH, SUITE 118
 PALM BEACH GARDENS, FL 33418
 PHONE: 561-744-3424

WARREN W. SCHAEFER, P.E.
 No. 44135
 PROFESSIONAL ENGINEER
 STATE OF FLORIDA
 LICENSE NO. 44135

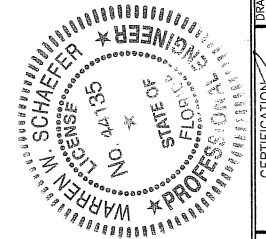
DRAWING NO. 780
 REV. B
 SHEET NO. 2 OF 3

ITEM #	ITEM DESCRIPTION	MANUFACTURER/NOTES
PARTS		
1A	STRAIGHT WINDOW JAMB	* WOOD
1B	RADIUS JAMB	LVL
4A	ALT. EXTERIOR STOP (STRAIGHT JAMB)	* WOOD
4B	ALT. EXTERIOR STOP (RADIUS JAMB)	LVL
5A	ALT. INTERIOR STOP (STRAIGHT JAMB)	* WOOD
5B	ALT. INTERIOR STOP (RADIUS JAMB)	LVL
6	MOUNTING CLIP (0.044" X 1.625" X 6.500")	18 GA. GALVANIZED STEEL
FASTENERS		
7	NO. 6 X 1 1/4" SMS	6" FROM ENDS & 12" MAX. O.C.
8	1 1/4" DRYWALL SCREW	2" FROM ENDS & 8" MAX. O.C.
9	1 3/16" BRAD NAIL	1" FROM CORNERS & 8" MAX. O.C.

NOTE: WOOD USED IN TESTING WAS EASTERN WHITE PINE WITH A SPECIFIC GRAVITY OF G = 0.36 AND A MODULUS OF ELASTICITY OF E = 1,200,000 PSI. OTHER WOOD SPECIES APPLICABLE FOR USE WITH THIS PRODUCT ARE THOSE WITH A SPECIFIC GRAVITY OF 0.36 AND MODULUS OF ELASTICITY OF 1,200,000 PSI OR GREATER. ALL WOOD IS MINIMUM GRADE 2 MILLED BY SIGNATURE DOOR INC. TO SELECT.



TYP. CORNER DETAIL
TYP. AT ALL WINDOW SHAPES



DRAWN BY: W.R.M.		CHECKED BY: W.W.S.	
PLOT: 1-2		DATE: 10/31/11	
NO.	REVISION	DESCRIPTION	DATE
DRAWING TITLE: DIRECT GLAZED IMPACT WINDOW		MANUFACTURER: SIGNATURE DOOR, INC. 401 PRIORITY STREET ALTOONA, PA 16602 800-741-2265	
CONSULTANTS: W. W. SCHAEFER ENGINEERING & CONSULTING, P.A. (CA 6809) 7480 150TH COURT NORTH, 33418 PALM BEACH GARDENS, FL 33424 PHONE: 561-744-5324		WARREN W. SCHAEFER, P.E. P.E. NO. 44135	
CERTIFICATION: WARREN W. SCHAEFER, P.E. NO. 171135, STATE OF FLORIDA, EXPIRES 12/31/2017		AUG 30 2017	
DRAWING NO. 1780	REV. B	SHEET NO. 3 OF 3	