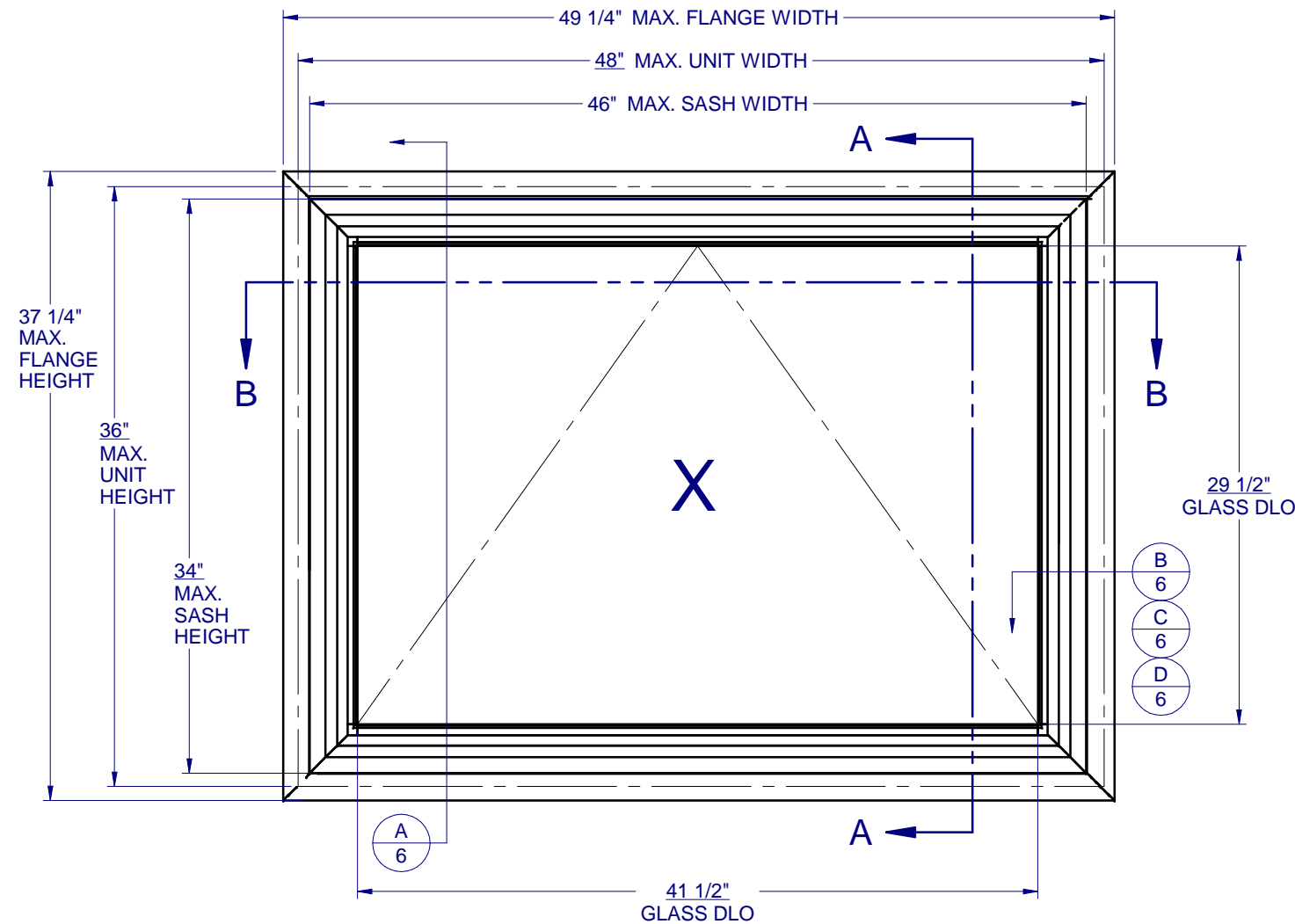


# AWNING - NON-IMPACT



## GENERAL NOTES:

1. THE PRODUCT SHOWN HEREIN IS DESIGNED AND MANUFACTURED TO COMPLY WITH THE FLORIDA BUILDING CODE (FBC), CURRENT EDITION AND IS RATED FOR USE IN THE HIGH VELOCITY HURRICANE ZONE (HVHZ).
2. GLAZING OPTIONS: (SEE SHEET 2)
3. CONFIGURATIONS: "X". ALL WINDOWS OPEN FROM BOTTOM TO OUTSIDE.
4. DESIGN PRESSURE RATING (SEE SHEET 2):  
 -NEGATIVE DESIGN LOADS BASED ON, TESTED PRESSURE AND GLASS TABLES ASTM E-1300-04e01/09.  
 -POSITIVE DESIGN LOADS BASED ON, TESTED PRESSURE, WATER INFILTRATION TEST PRESSURE AND GLASS TABLES ASTM E-1300-04e01/09.
5. ANCHORAGE: THE 33 1/3% STRESS INCREASE HAS NOT BEEN USED IN THE DESIGN OF THIS PRODUCT. SEE SHEET 6 FOR ANCHOR DETAILS. WINDLOAD DURATION FACTOR Cd=1.6 WAS USED FOR WOOD ANCHOR CALCULATIONS.
6. NOT APPROVED FOR IMPACT RESISTANCE. IMPACT PROTECTIVE SYSTEM IS REQUIRED IN WIND BORNE DEBRIS REGION.
7. ALL FRAMES AND VENTS FULLY WELDED.
8. SERIES / MODEL DESIGNATION AW-8450.
9. THE DESIGNATION X AND O STAND FOR THE FOLLOWING:  
 X = OPERABLE SASH



1900 SW 44TH AVE.  
 Ocala, Florida 34474  
 WWW.CWS.CC

## 8450 PVC AWNING NON-IMPACT

PROPRIETARY AND CONFIDENTIAL  
 THE INFORMATION CONTAINED IN THIS DRAWING IS THE SOLE PROPERTY OF CUSTOM WINDOW SYSTEMS, INC. ANY REPRODUCTION IN PART OR AS A WHOLE WITHOUT THE WRITTEN PERMISSION OF CUSTOM WINDOW SYSTEMS, INC IS PROHIBITED.



8/05/2020

LUCAS A. TURNER, P.E.  
 FL PE # 58201  
 2428 Old Natchez Trc Trl  
 Camden, TN 38320  
 PH. 941-380-1574

### SHEET DESCRIPTION:

### GENERAL NOTES AND ELEVATIONS

DRAWN BY: ADE	DATE: 10/30/11
DWG #: CWS-652	REV.: D
SCALE: 1:10	SHEET 1 OF 6

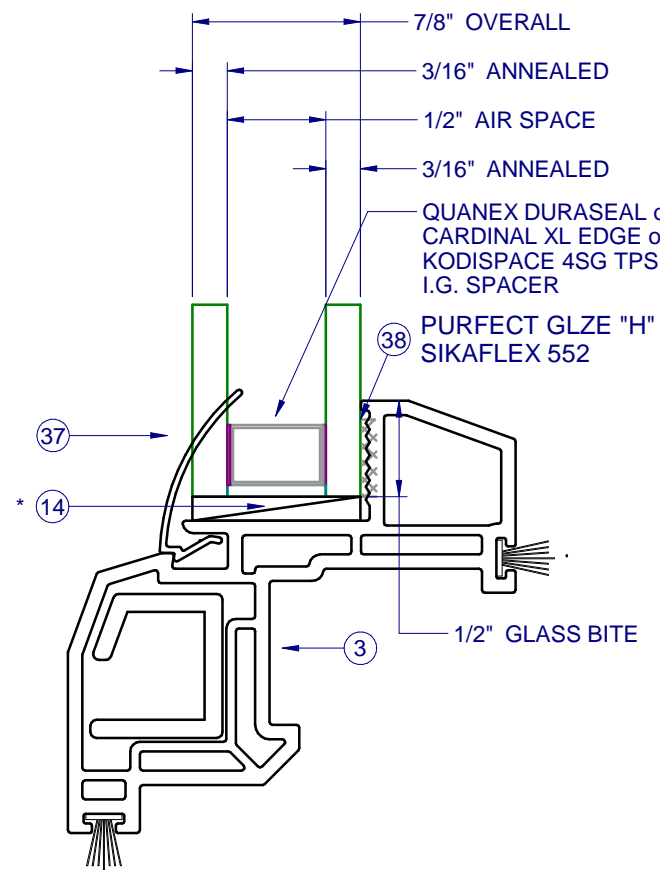
### TABLE OF CONTENTS

GENERAL NOTES & ELEVATIONS.....	1
GLAZING DETAILS & DP CHART.....	2
SECTION VIEWS.....	3
BOM & EXTRUSIONS.....	4
ANCHOR SCHEDULE & NOTES.....	5
INSTALLATION DETAILS.....	6

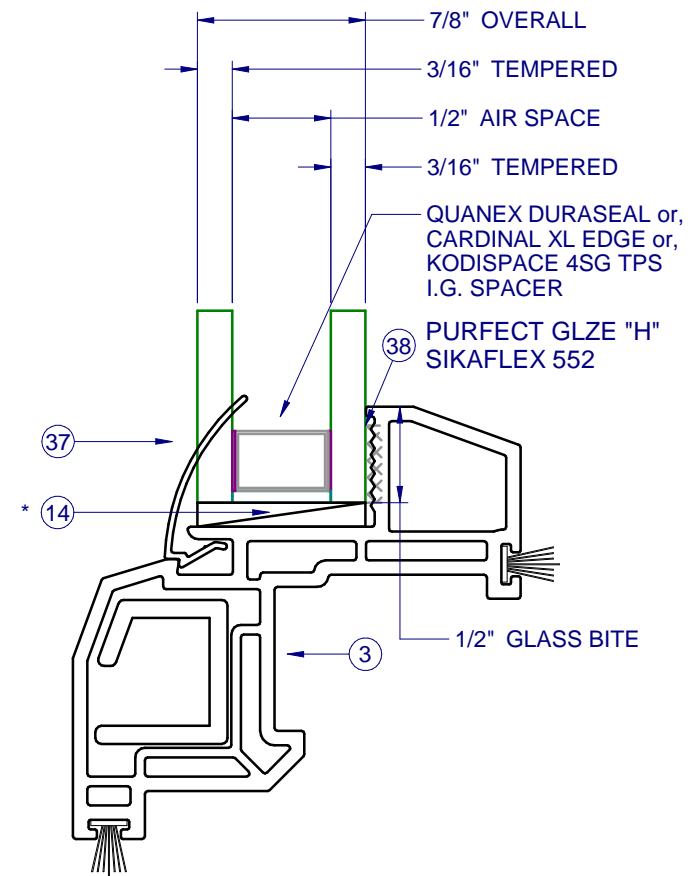
MAX. UNIT SIZE	DESIGN PRESSURE RATING	IMPACT RATING
48" x 36"	SEE COMPARATIVE ANALYSIS CHART, SHEET 2	NONE

**DESIGN PRESSURES (PSF) FOR "X" CONFIGURATION**

Unit	Glass	Unit Height (in.)					
		17 7/8	23 1/2	29 1/2	31 1/2	35 1/2	36
20	A, B	+70.0 / -101.3	+70.0 / -101.3	+70.0 / -101.3	+70.0 / -101.3	+70.0 / -85.8	+70.0 / -84.1
23 1/2	A, B	+70.0 / -101.3	+70.0 / -101.3	+70.0 / -101.3	+70.0 / -94.2	+70.0 / -78.4	+70.0 / -76.8
27 1/2	A, B	+70.0 / -101.3	+70.0 / -101.3	+70.0 / -101.0	+70.0 / -89.6	+70.0 / -73.1	+70.0 / -71.5
29 1/2	A, B	+70.0 / -101.3	+70.0 / -101.3	+70.0 / -100.5	+70.0 / -88.5	+70.0 / -71.5	+69.8 / -69.8
31 1/2	A, B	+70.0 / -101.3	+70.0 / -101.3	+70.0 / -100.5	+70.0 / -88.2	+70.0 / -70.3	+68.6 / -68.6
35 1/2	A, B	+70.0 / -101.3	+70.0 / -101.3	+70.0 / -100.5	+70.0 / -88.2	+69.4 / -69.4	+67.5 / -67.5
41 1/2	A, B	+70.0 / -101.3	+70.0 / -101.3	+70.0 / -92.4	+70.0 / -88.2	+69.4 / -69.4	+67.5 / -67.5
48	A, B	+70.0 / -101.3	+70.0 / -85.6	+70.0 / -74.3	+70.0 / -71.8	+67.9 / -67.9	+67.5 / -67.5



GLASS TYPE A



GLASS TYPE B

NOTE: IF SIZE INTENDED IS NOT SHOWN, USE NEXT LARGER SIZE.

\* SETTING BLOCKS PER FBC 2411.3.3.1



1900 SW 44TH AVE.  
OCALA, FLORIDA 34474  
WWW.CWS.CC

**8450 PVC  
AWNING  
NON-IMPACT**

PROPRIETARY AND CONFIDENTIAL  
THE INFORMATION CONTAINED IN THIS DRAWING IS THE SOLE PROPERTY OF CUSTOM WINDOW SYSTEMS, INC. ANY REPRODUCTION IN PART OR AS A WHOLE WITHOUT THE WRITTEN PERMISSION OF CUSTOM WINDOW SYSTEMS, INC IS PROHIBITED.



8/05/2020

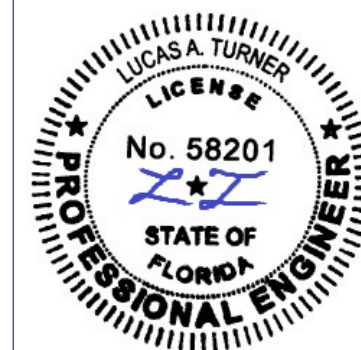
LUCAS A. TURNER, P.E.  
FL PE # 58201  
2428 Old Natchez Trc Trl  
Camden, TN 38320  
PH. 941-380-1574

SHEET DESCRIPTION:  
**COMPARATIVE ANALYSIS  
AND GLAZING DETAILS**

DRAWN BY: ADE	DATE: 10/30/11
DWG #: CWS-652	REV.: D
SCALE: 1:1	SHEET 2 OF 6

**8450 PVC  
AWNING  
NON-IMPACT**

**PROPRIETARY AND CONFIDENTIAL**  
THE INFORMATION CONTAINED IN THIS DRAWING IS THE SOLE PROPERTY OF CUSTOM WINDOW SYSTEMS, INC. ANY REPRODUCTION IN PART OR AS A WHOLE WITHOUT THE WRITTEN PERMISSION OF CUSTOM WINDOW SYSTEMS, INC IS PROHIBITED.



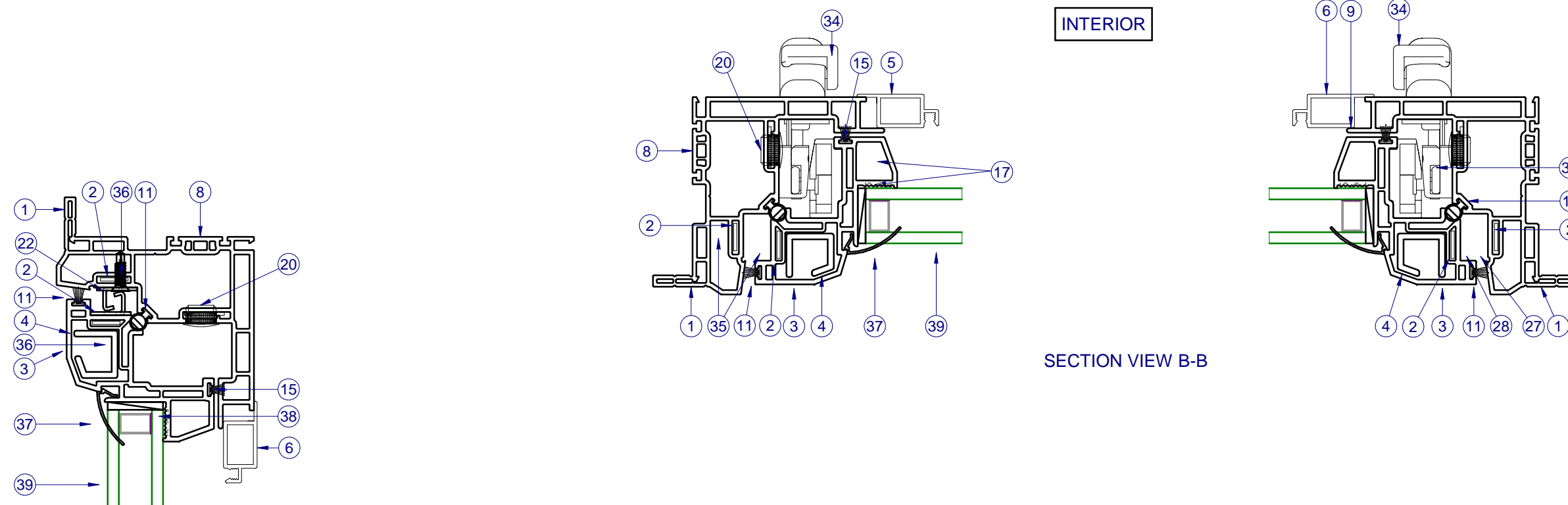
8/05/2020

LUCAS A. TURNER, P.E.  
FL PE # 58201  
2428 Old Natchez Trc Trl  
Camden, TN 38320  
PH. 941-380-1574

SHEET DESCRIPTION:

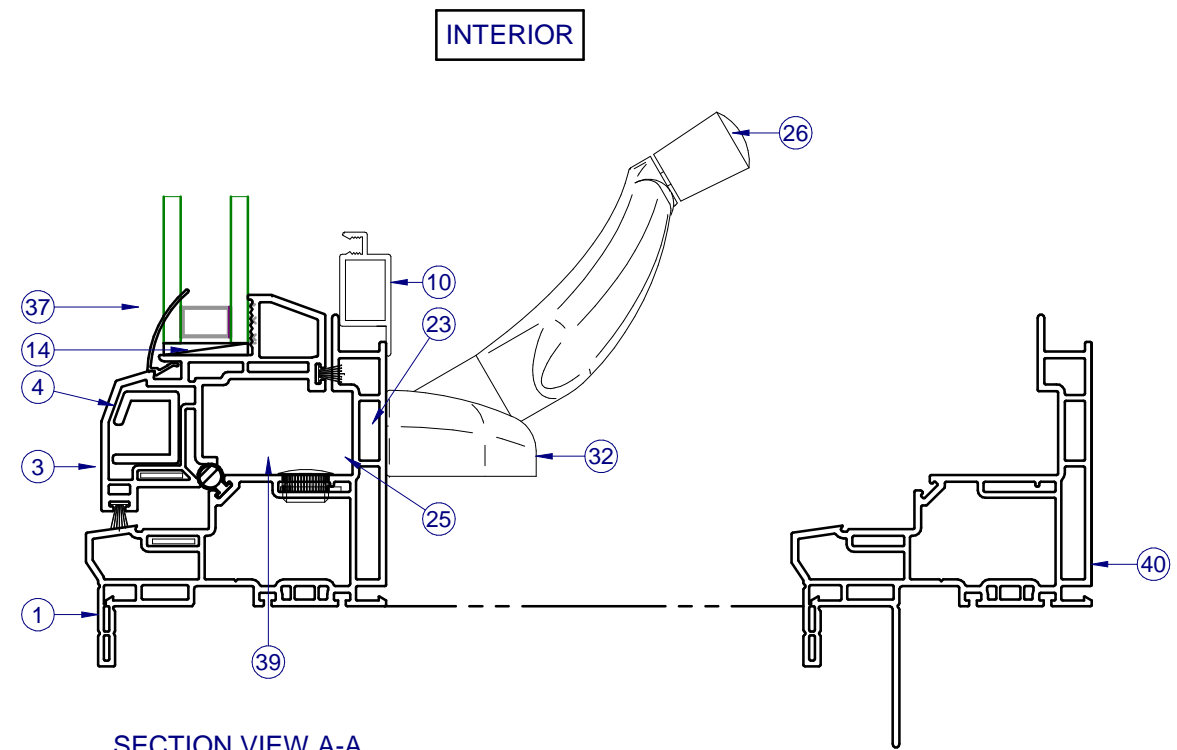
**SECTION VIEWS**

DRAWN BY: <b>ADE</b>	DATE: <b>10/30/11</b>
DWG #: <b>CWS-652</b>	REV.: <b>D</b>
SCALE: <b>1:2</b>	<b>SHEET 3 OF 6</b>



INTERIOR

SECTION VIEW B-B



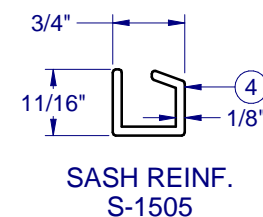
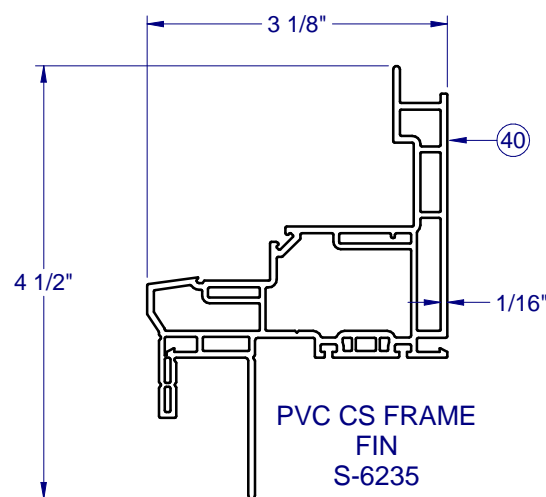
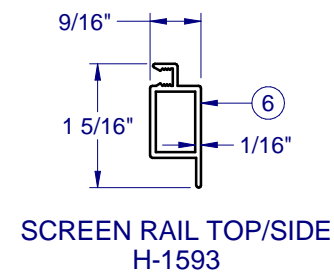
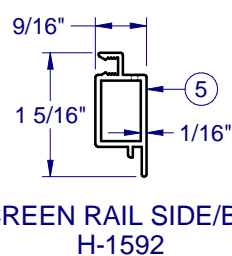
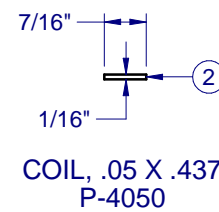
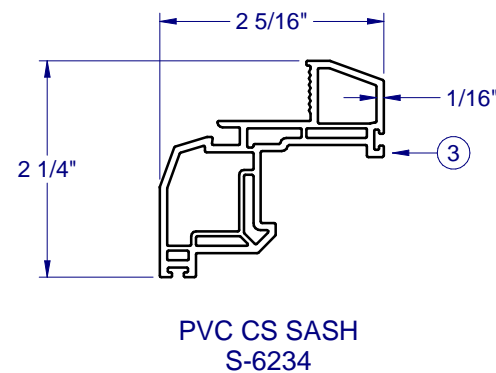
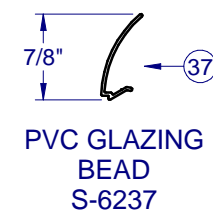
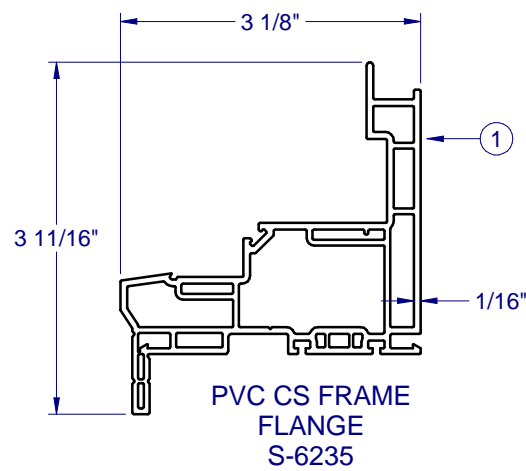
INTERIOR

SECTION VIEW A-A

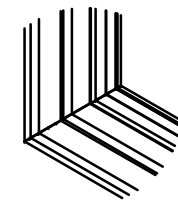
ALTERNATE FIN FRAME

ITEMS NOT SHOWN FOR CLARITY:  
7, 10, 12-14, 16, 18-19, 21, 24, 29-30, 33

PARTS LIST			
ITEM	PART #	DESCRIPTION	MATERIAL
1	H-6235	FR., AWNING., MAIN	PVC
2	P-4050	COIL-ALUMINUM, 5052-H32 (.050 X .437) JB, LEFT	ALUM
3	H-6234	SASH, AWNING, ALL SIDES	PVC
4	S-1505	REINF. AWNING, SASH, ALL SIDES	ALUM
5	H-1592	SCREEN RAIL, SIDE	ALUM
6	H-1593	SCREEN RAIL, TOP/BTM/SIDE	ALUM
7	P-3029	SCREEN LIFT-OUT	
9	P-3195	SCREEN SPRING, NO HOLE TENSION	SS
10	P-3197	SCREEN CORNER KEY	PLASTIC
11	P-5573	WSTP., BULB, HOLLOW, T-SLOT, .187 X .358	RUBBER
12	P-3228	SCREEN SPLINE, .155 DIA, BLK	
13		SPACER, SEE SHEET 3	
14	P-5615	SET. BLK., 85 DUR., 1/8" X 1" X 2" LG.	RUBBER
15	P-3429	WSTP., .270 X .187 BACK, FIN, BLACK, SASH, ALL SIDES	
16	P-3581	SCREEN CLOTH, 18 X 16 FIBERGLASS	
17	P-3587	#8 x 1" PH FLAT TEK, ZINC	STEEL
18	P-3613	CWS LBL. (LOGO)	
19	P-3685	AW-8400 GOLD CERT. LABEL, NFRC TAB	
20	P-5588	CAP PLUG, 1/2" HOLE	NYLON
21	P-3881	TEMPORARY LBL. (NFRC/DP)	
22	P-3940	SNUBBER, SS, PVC	SS
23	P-4004	#8-32 X 1/2" PH PH, MS, SS (ROTO HDWE. LOCK)	SS
24	P-4005	SUPPORT PLATE, LOCK, SS, ROTO HDWE. (Use w/ P-4006)	SS
25	P-4012	SHIM, ROTO OPERATOR, ROTO HDWE. (4.8mm)	
26	P-4013	FOLDING HANDLE	
27	P-4015	HINGE ARM, WASHABILITY, 13", ROTO HARDWARE	
28	P-4018	HINGE TRACK, 13" ROTO HDWE., "A" & "B"	
29	P-4024	GASKET, ROTO OPER., ROTO HDWE., 1/16"	
30	P-4042	GASKET, LOCK	
31	P-4043	STRIKE, MULTI-POINT	NYLON
32	P-4044	ROTO OPER., SCISSOR ARM, AWNING	
33	P-4045	BRACKET, ROTO OPER., AWNING	
34	P-4047	LOCK, SINGLE-POINT, ROTO HDWE., WHITE	
35	P-4146	#8 x 3/4" PH FLAT TEK, SS	SS
36	P-4641	#8 x 5/8" PH FLAT TEK, #7 HEAD, SS	SS
37	S-6237	GLZ. BD.,	PVC
38		PURFECT GLAZE "H", SIKAFLEX 552	
39	GLASS	SEE SHEET 2	
40	H-6235	Fin Frame	PVC



FRAME AND SASH CORNER CONSTRUCTION



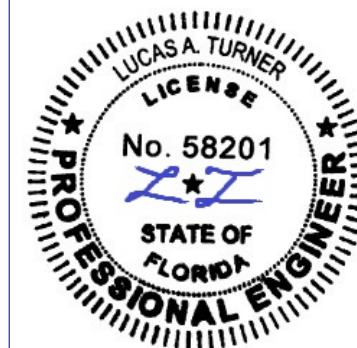
CORNER WELD (ALL SIDES) 1:8

Custom WINDOW SYSTEMS

1900 SW 44TH AVE.  
OCALA, FLORIDA 34474  
WWW.CWS.CC

**8450 PVC AWNING NON-IMPACT**

PROPRIETARY AND CONFIDENTIAL  
THE INFORMATION CONTAINED IN THIS DRAWING IS THE SOLE PROPERTY OF CUSTOM WINDOW SYSTEMS, INC. ANY REPRODUCTION IN PART OR AS A WHOLE WITHOUT THE WRITTEN PERMISSION OF CUSTOM WINDOW SYSTEMS, INC IS PROHIBITED.



8/05/2020

LUCAS A. TURNER, P.E.  
FL PE # 58201  
2428 Old Natchez Trc Trl  
Camden, TN 38320  
PH. 941-380-1574

SHEET DESCRIPTION:

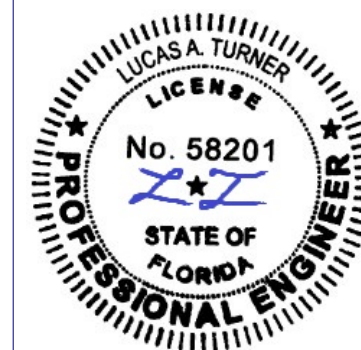
BOM AND EXTRUSIONS

DRAWN BY: ADE	DATE: 10/30/11
DWG #: CWS-652	REV.: D
SCALE: 1:2	SHEET 4 OF 6

NOTE: ALL ALUMINUM EXTRUSIONS ARE 6063-T6 UNLESS OTHERWISE NOTED.

**8450 PVC  
AWNING  
NON-IMPACT**

PROPRIETARY AND CONFIDENTIAL  
THE INFORMATION CONTAINED IN  
THIS DRAWING IS THE SOLE  
PROPERTY OF CUSTOM WINDOW  
SYSTEMS, INC. ANY  
REPRODUCTION IN PART OR AS A  
WHOLE WITHOUT THE WRITTEN  
PERMISSION OF CUSTOM WINDOW  
SYSTEMS, INC IS PROHIBITED.



8/05/2020

LUCAS A. TURNER, P.E.  
FL PE # 58201  
2428 Old Natchez Trc Trl  
Camden, TN 38320  
PH. 941-380-1574

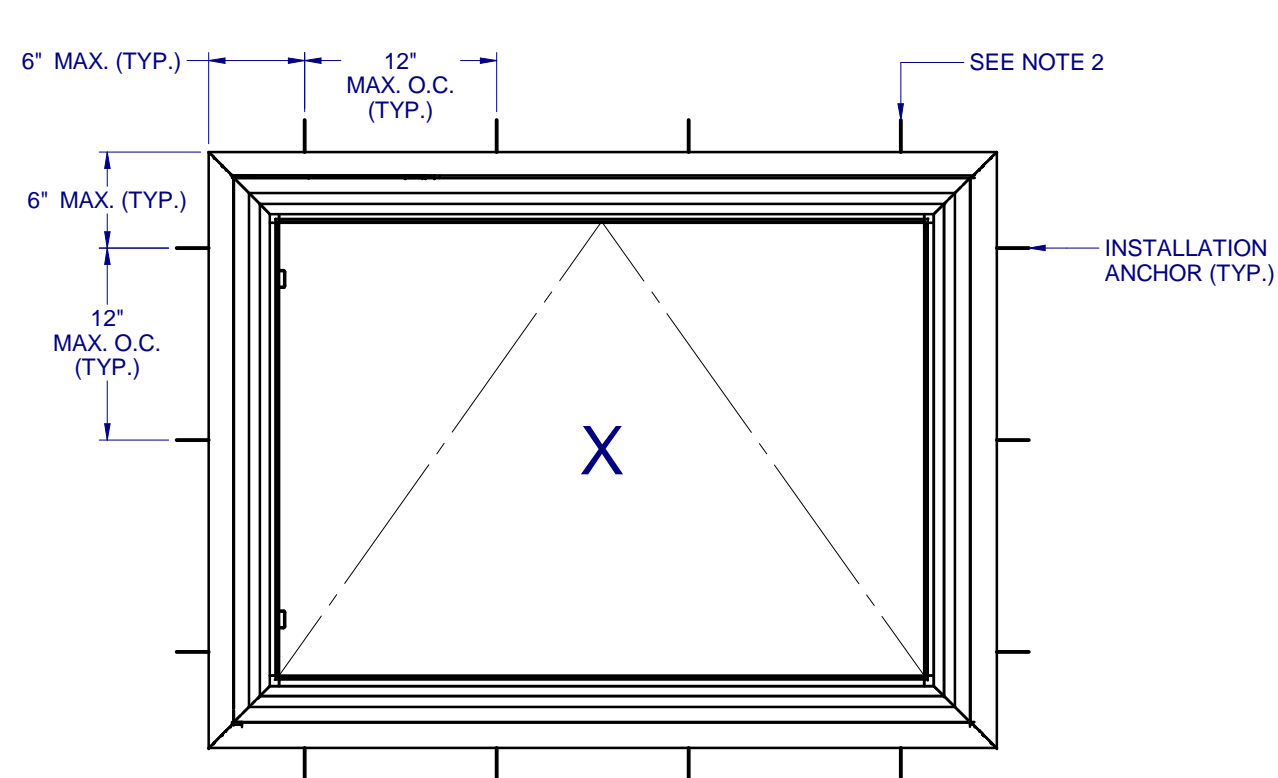
SHEET DESCRIPTION:

**ANCHOR SCHEDULE AND  
NOTES**

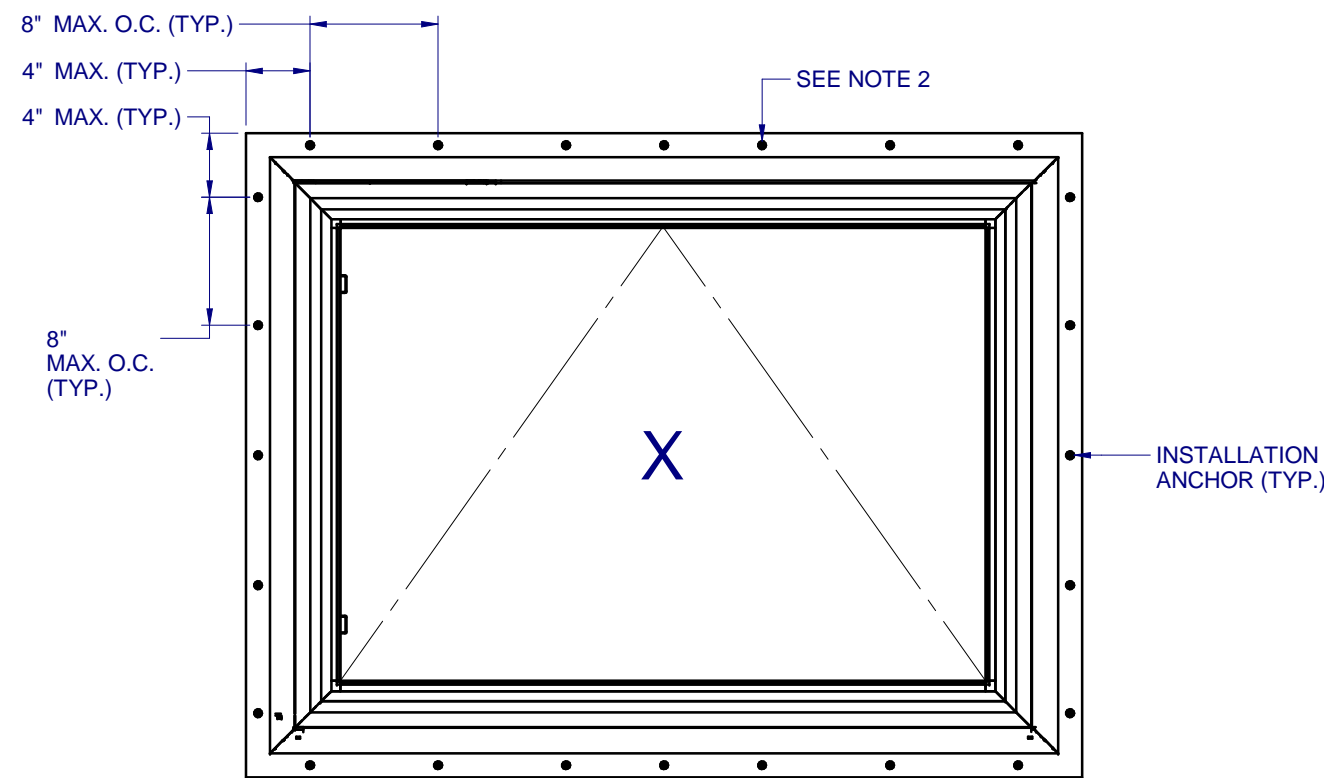
DRAWN BY: ADE	DATE: 10/30/11
------------------	-------------------

DWG #: CWS-652	REV.: D
-------------------	------------

SCALE: 1:12	SHEET 5 OF 6
----------------	-----------------



ANCHOR LAYOUT - (FLANGE)



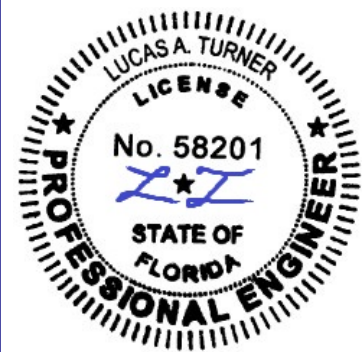
ANCHOR LAYOUT - (FIN)

NOTES:

1. INSTALL ONE ANCHOR AT EACH INSTALLATION LOCATION. SILL ANCHOR SPACING SAME AS HEAD.
2. SHIM AS REQ AT EACH INSTALLATION ANCHOR USING LOAD BEARING SHIMS. MAX. ALLOWABLE SHIM STACK TO BE 1/4". USE SHIMS WHERE SPACE GREATER THAN 1/16" IS PRESENT. LOAD BEARING SHIMS SHALL BE CONSTRUCTED OF HIGH DENSITY PLASTIC OR BETTER. WOOD SHIMS ARE NOT ALLOWED.
3. ANCHOR TYPE, SIZE, SPACING AND EMBEDMENT SHALL BE AS SPECIFIED IN THESE DRAWINGS, SEE TABLE 1, SHEET 6.
4. ALL INSTALLATION ANCHORS MUST BE MADE OF OR PROTECTED WITH A CORROSION RESISTANT MATERIAL OR COATING. DISSIMILAR METALS OR MATERIALS IN CONTACT WITH PRESSURE TREATED WOOD MUST BE PROTECTED TO PREVENT REACTION.
5. INSTALLATION ANCHORS SHALL BE IN ACCORDANCE WITH ANCHOR MANUFACTURER'S INSTALLATION INSTRUCTIONS, AND ANCHORS SHALL NOT BE USED IN SUBSTRATES WITH STRENGTHS LESS THAN THE MINIMUM SPECIFIED IN TABLE 1, SHEET 6.
6. ANCHOR EMBEDMENT TO SUBSTRATE SHALL BE BEYOND WALL DRESSING OR STUCCO. FOR CONCRETE/CMU OPENINGS, EMBEDMENT SHALL BE BEYOND WOOD BUCKS, IF USED, INTO SUBSTRATE - 1X BUCKS ARE OPTIONAL.
7. A MINIMUM CENTER-TO-CENTER SPACING SHALL BE MAINTAINED BETWEEN ALL FASTENERS: 3" FOR MASONRY, 1" FOR WOOD AND METAL.
8. WOOD OR MASONRY OPENINGS, BUCKS AND BUCK FASTENERS SHALL BE PROPERLY DESIGNED BY THE ARCHITECT OR ENGINEER OF RECORD AND INSTALLED TO TRANSFER WIND LOADS TO THE STRUCTURE. SUBSTRATES SHALL MEET THE MINIMUM STRENGTH REQUIREMENTS AS SHOWN IN TABLE1, SHEET 6. CONCRETE AND MASONRY SUBSTRATES MAY NOT BE CRACKED.
9. SEALING AND FLASHING STRATEGIES FOR OVERALL WATER RESISTANCE OF INSTALLATION SHALL BE DONE BY OTHERS FOLLOWING THE CURRENT VERSION OF THE REFERENCE DOCUMENTS:  
FMA/AAMA 100(FIN WINDOWS), FMA/AAMA 200(FLANGE WINDOWS), FMA/WDMA 250(BOX WINDOWS), FMA/AAMA/WDMA 300(EXTERIOR DOORS)

**8450 PVC  
AWNING  
NON-IMPACT**

**PROPRIETARY AND CONFIDENTIAL**  
THE INFORMATION CONTAINED IN THIS DRAWING IS THE SOLE PROPERTY OF CUSTOM WINDOW SYSTEMS, INC. ANY REPRODUCTION IN PART OR AS A WHOLE WITHOUT THE WRITTEN PERMISSION OF CUSTOM WINDOW SYSTEMS, INC IS PROHIBITED.



8/05/2020

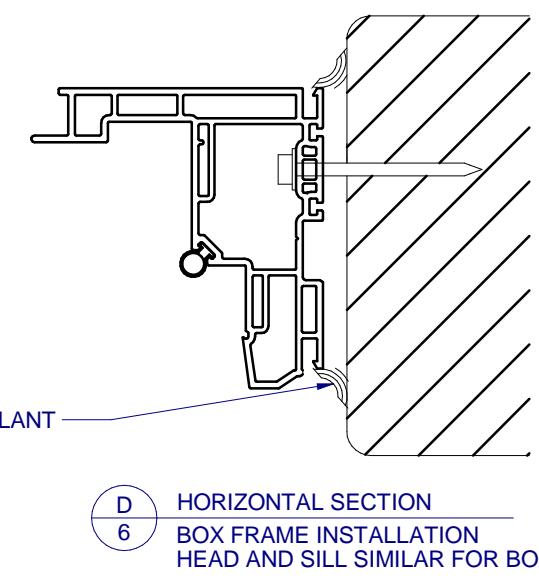
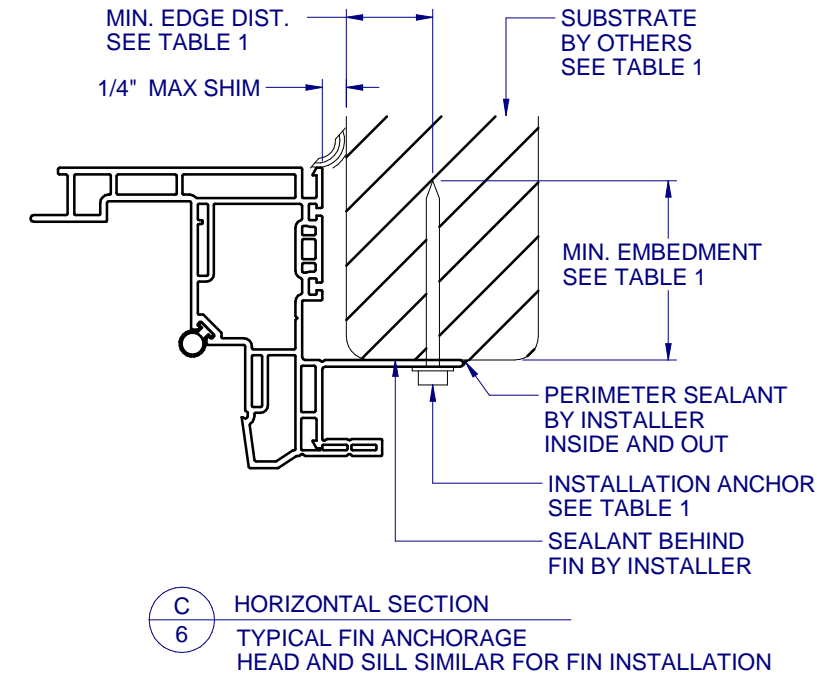
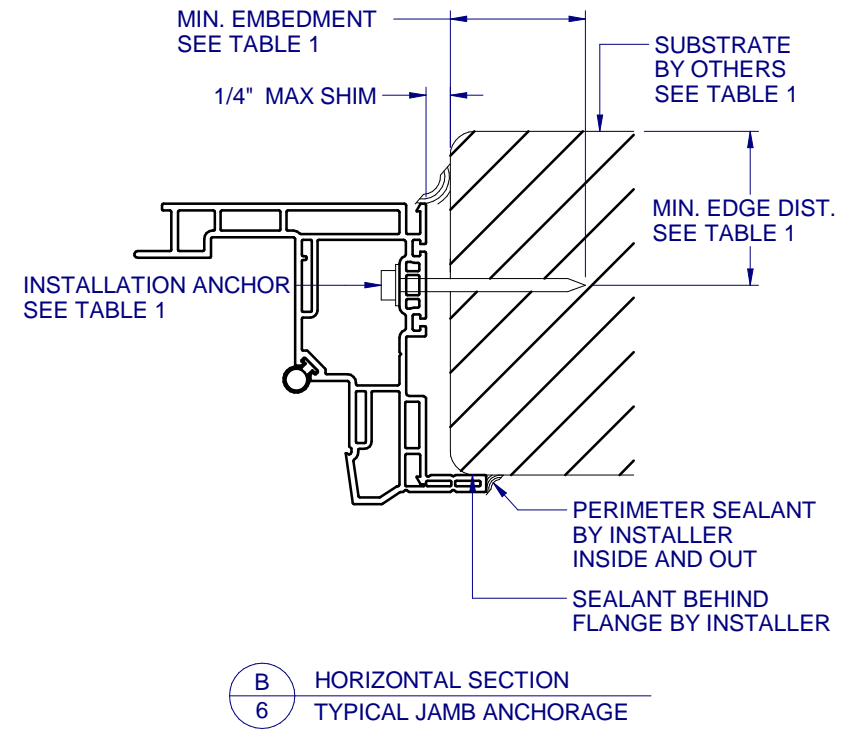
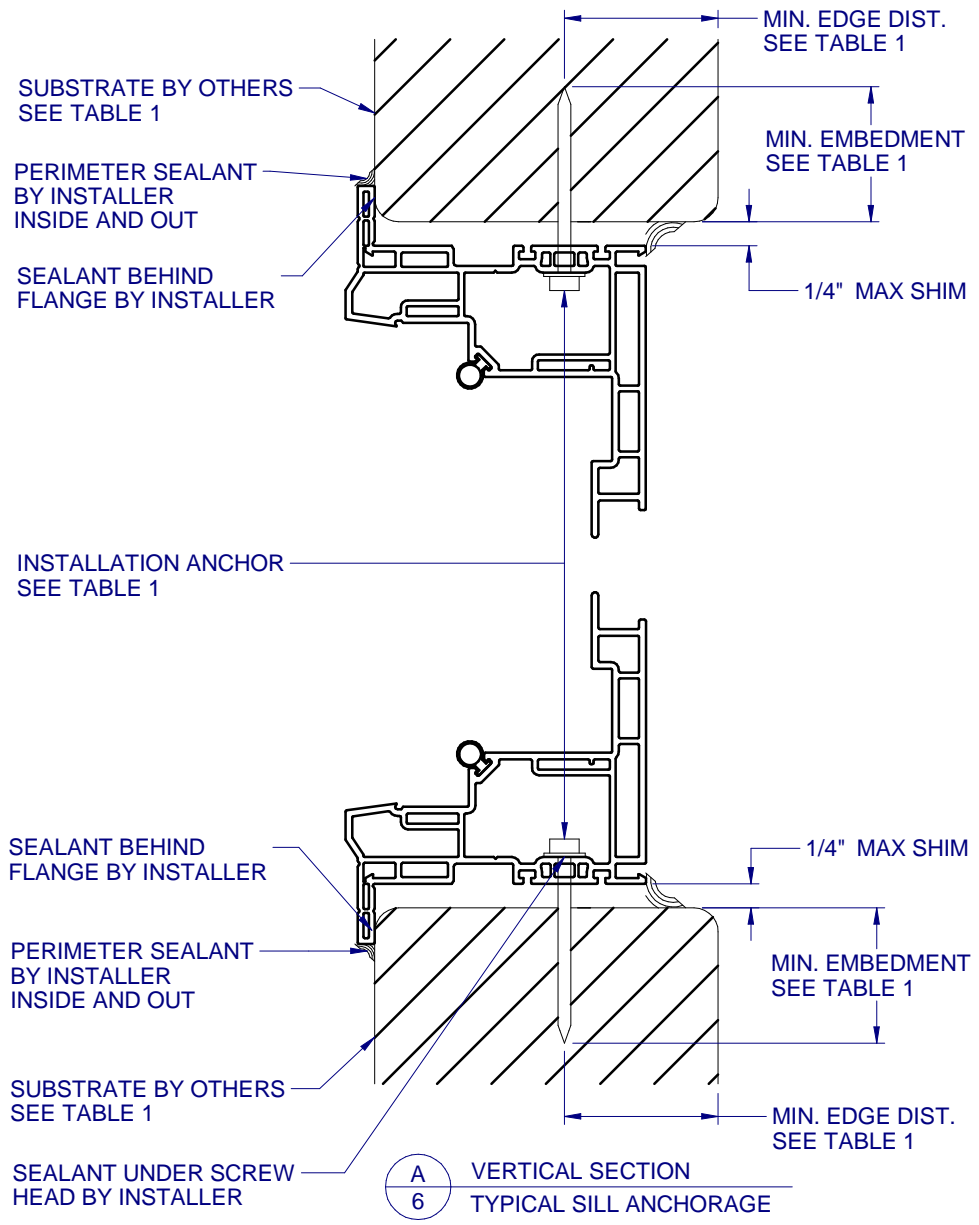
LUCAS A. TURNER, P.E.  
FL PE # 58201  
2428 Old Natchez Trc Trl  
Camden, TN 38320  
PH. 941-380-1574

SHEET DESCRIPTION:

**INSTALLATION DETAILS**

DRAWN BY: <b>ADE</b>	DATE: <b>10/30/11</b>
DWG #: <b>CWS-652</b>	REV.: <b>D</b>
SCALE: <b>1:2</b>	<b>SHEET 6 OF 6</b>

**TYPICAL HEAD ANCHORAGE**



**FLANGE REMOVAL NOTE: PARTIALLY OR FULLY REMOVING THE FLANGE, UP TO AND INCLUDING A BOX-FRAME APPLICATION IS ACCEPTABLE PROVIDED:**

- MIN. 1/4" FILLET OF CONSTRUCTION-GRADE ADHESIVE CAULK IS APPLIED INSIDE AND OUT, FULL PERIMETER, BY INSTALLER.
- PRODUCT ANCHORAGE IS IN ACCORDANCE WITH REQUIREMENTS AS SHOWN FOR FLANGE WINDOWS.

**TABLE 1: APPROVED INSTALLATION FASTENERS**

FRAME TYPE	SUBSTRATE TYPE	ANCHOR TYPE	MIN. EMBEDMENT	MIN. EDGE DIST.
FLANGE	CONCRETE (2.0 KSI MIN.)	3/16" ITW TAPCON	1"	1-1/8"
FLANGE	HOLLOW OR GROUT-FILLED CMU (117 PCF MIN.)	3/16" ITW TAPCON	1"	2"
FLANGE	CONCRETE (2.85 KSI MIN.)	3/16" ELCO ULTRACON	1"	1"
FLANGE	GROUT-FILLED CMU (ASTM C-90)	3/16" ELCO ULTRACON	1-1/4"	2-1/2"
FLANGE	2X MIN. SPRUCE-PINE-FIR (G=0.42)	3/16" ITW TAPCON OR ELCO ULTRACON	1-3/8"	7/8"
FLANGE	2X MIN. SPRUCE-PINE-FIR (G=0.42)	#10 WOOD SCREW	1-3/8"	7/8"
FLANGE	16 GAUGE (0.060") MIN. STEEL STUD (33 KSI YIELD MIN)	#10-16 HILTI KWIK-FLEX OR ITW TEKS SELF-DRILLING SCREW	FULL THREAD THRU 0.060"	7/16"
FLANGE	1/8" ALUM. (6063-T5 MIN.) OR 1/8" STEEL (33 KSI MIN.)	#10 GRADE 5 SELF-TAPPING / DRILLING SCREW	FULL THREAD THRU 0.125"	7/16"
FIN	2X MIN. SPRUCE-PINE-FIR (G=0.42)	#8 WOOD SCREW	1-1/2"	7/16"