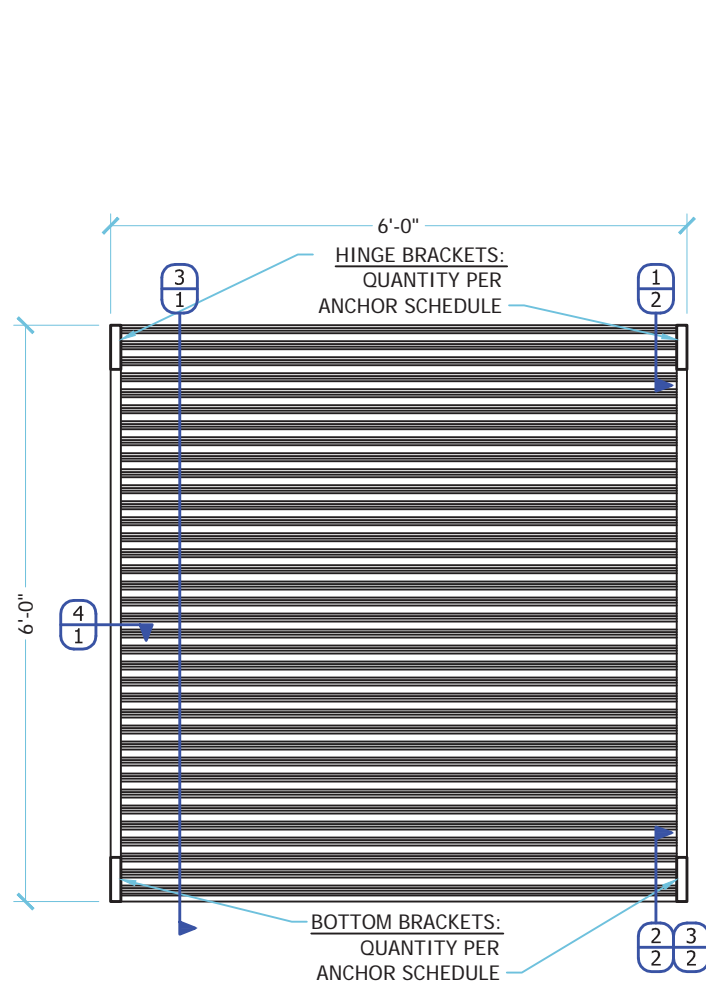
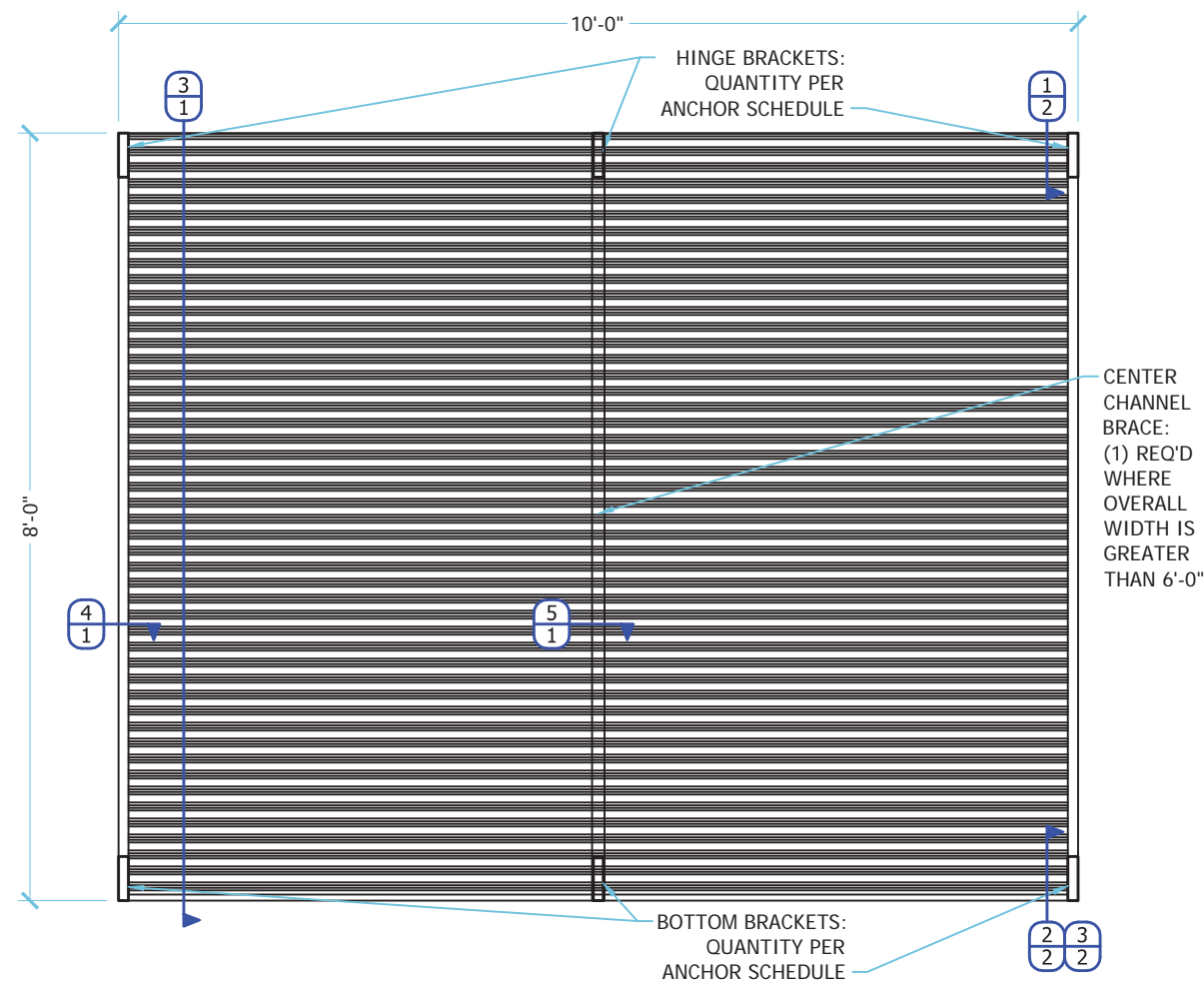


# BELIZEAN BREEZE BAHAMA SHUTTER



ALLOWABLE DESIGN PRESSURES  
+/- 80 PSF

**1 SHUTTERS UP TO 6'-0" WIDE**  
SCALE: 1/2" = 1'-0" EXTERIOR ELEVATION



ALLOWABLE DESIGN PRESSURES  
+/- 65 PSF

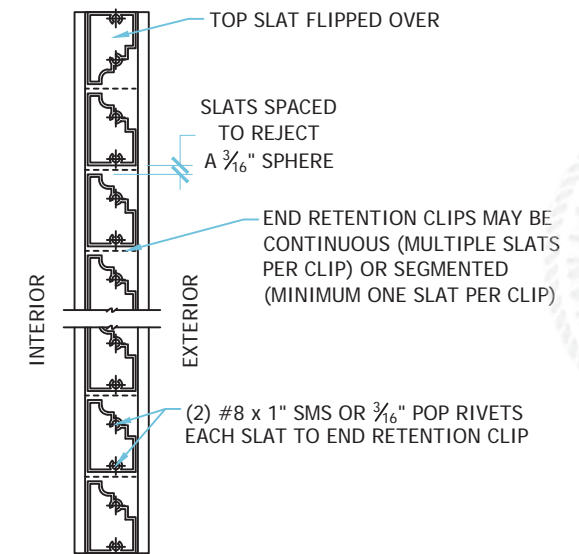
**2 SHUTTERS UP TO 10'-0" WIDE**  
SCALE: 1/2" = 1'-0" EXTERIOR ELEVATION

## GENERAL NOTES

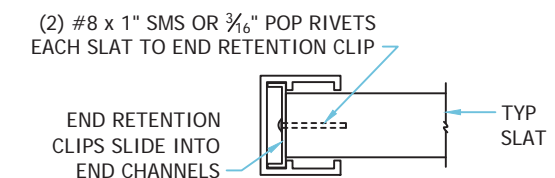
- THIS SYSTEM HAS BEEN TESTED & EVALUATED IN ACCORDANCE WITH THE 2007 FLORIDA BUILDING CODE (INCL 2009 SUPPLEMENTS), AS WELL AS THE 2010 FLORIDA BUILDING CODE.
- THIS SYSTEM IS VALID FOR USE WITHIN AND OUTSIDE THE HIGH VELOCITY HURRICANE ZONE (HVHZ).
- THIS SYSTEM HAS BEEN TESTED AND EVALUATED AS A LARGE MISSILE IMPACT RESISTANT SHUTTER PRODUCT FOR PROTECTION FROM WIND-BORNE DEBRIS.
- POSITIVE AND NEGATIVE DESIGN PRESSURES CALCULATED FOR USE WITH THIS SYSTEM SHALL BE DETERMINED BY OTHERS ON A SITE-SPECIFIC BASIS IN ACCORDANCE WITH THE GOVERNING CODE.

- ALL ALUMINUM EXTRUSIONS SHALL BE 6063-T6 ALLOY & TEMPER, UNLESS NOTED OTHERWISE.
- ASSEMBLED UNITS SHALL BE PERMANENTLY LABELED WITH A MINIMUM OF ONE LABEL PER UNIT CONTAINING ALL INFORMATION SPECIFIED IN THE ABOVE-NOTED BUILDING CODE, AS WELL AS THE FOLLOWING:  
Impact Secure Shutters, Inc.  
Cape Coral, FL
- ALL BOLTS & WASHERS SHALL BE ZINC COATED STEEL, GALVANIZED STEEL, OR STAINLESS STEEL WITH A MINIMUM TENSILE YIELD STRENGTH OF 60 KSI. ALL 3/16" OR 1/4" POP RIVETS SHALL BE 5056-H32 ALUMINUM ALLOY OR STRONGER.

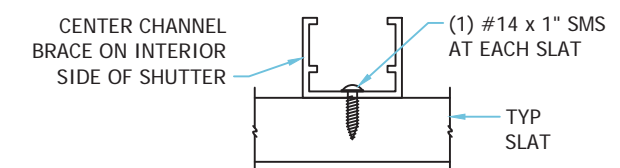
- ANY STEEL IN CONTACT WITH ALUMINUM SHALL BE PAINTED OR PLATED AS PRESCRIBED IN THE ABOVE-NOTED BUILDING CODE.
- PERMIT HOLDER SHALL VERIFY THE ADEQUACY OF THE EXISTING STRUCTURE TO WITHSTAND SUPERIMPOSED LOADS.
- THIS PRODUCT EVALUATION DOCUMENT IS GENERIC AND DOES NOT PROVIDE INFORMATION FOR A SPECIFIC SITE. FOR SITE CONDITIONS DIFFERENT FROM THE CONDITIONS DETAILED HEREIN, A LICENSED PROFESSIONAL ENGINEER OR REGISTERED ARCHITECT SHALL PREPARE SITE-SPECIFIC DOCUMENTS FOR USE IN CONJUNCTION WITH THIS APPROVAL.



**3 SLAT ASSEMBLY**  
SCALE: 4" = 1'-0" VERT SECTION



**4 TYP SLAT AT END CHANNEL**  
SCALE: 4" = 1'-0" HORIZ SECTION



**5 CENTER CHANNEL BRACE**  
SCALE: 4" = 1'-0" HORIZ SECTION

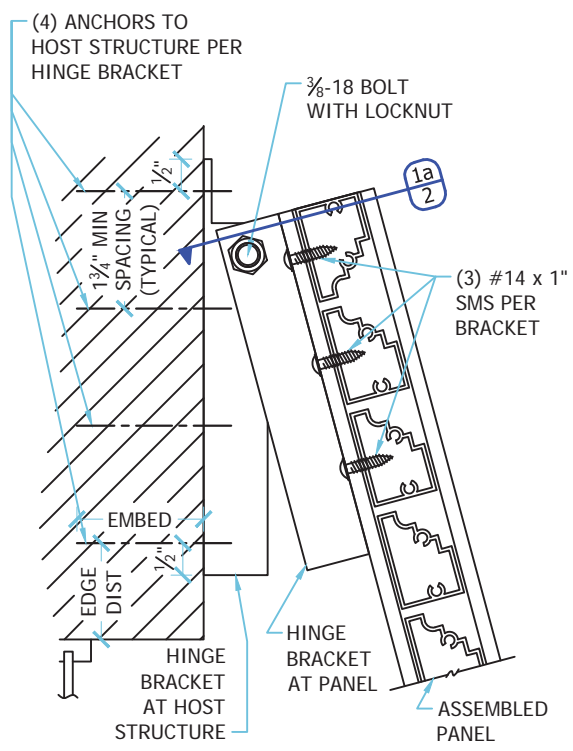
DATE	DESCRIPTION	BY
9/29/11	INITIAL SUBMITTAL	CL
-	-	-
-	-	-
-	-	-

BELIZEAN BREEZE BAHAMA SHUTTER - HVHZ - FLORIDA PRODUCT APPROVAL

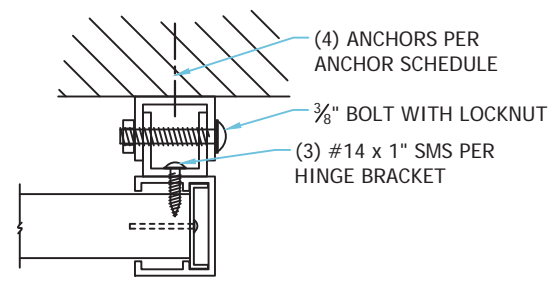
IMPACT SECURE SHUTTERS, Inc  
1114 SE 12th CT  
CAPE CORAL, FL 33990

DRAWING NUMBER:  
ISS.11001

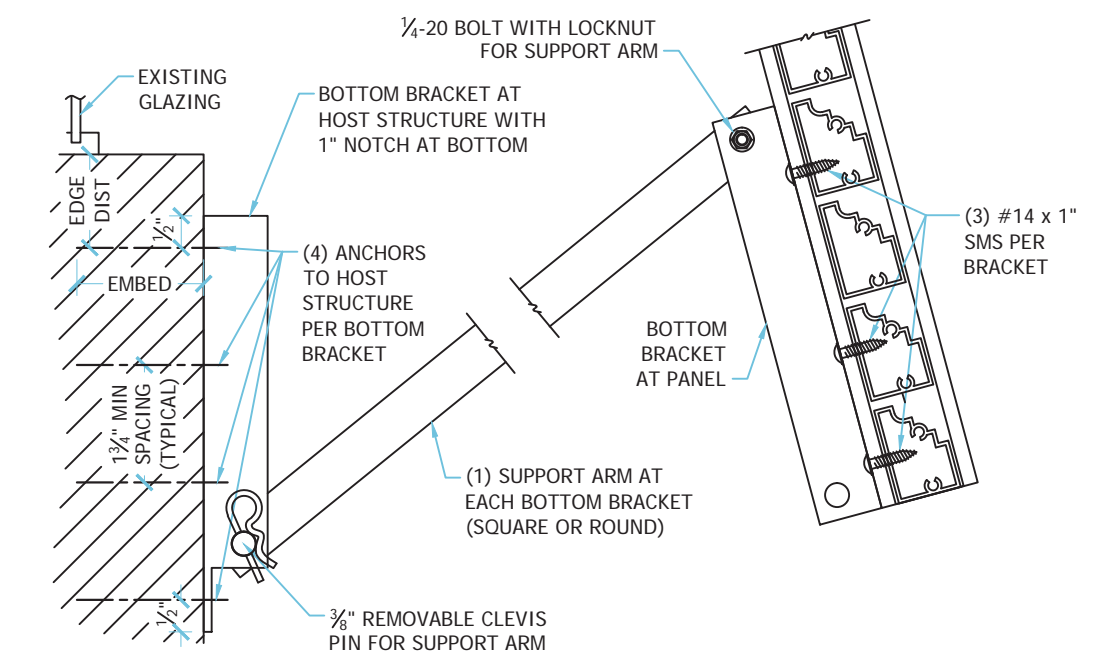
ISS.11001\_01b Belizean Breeze Bahama (FBC) dwg (Cr: 9/29/2011 17:08) clangley 12/16/2011 15:04



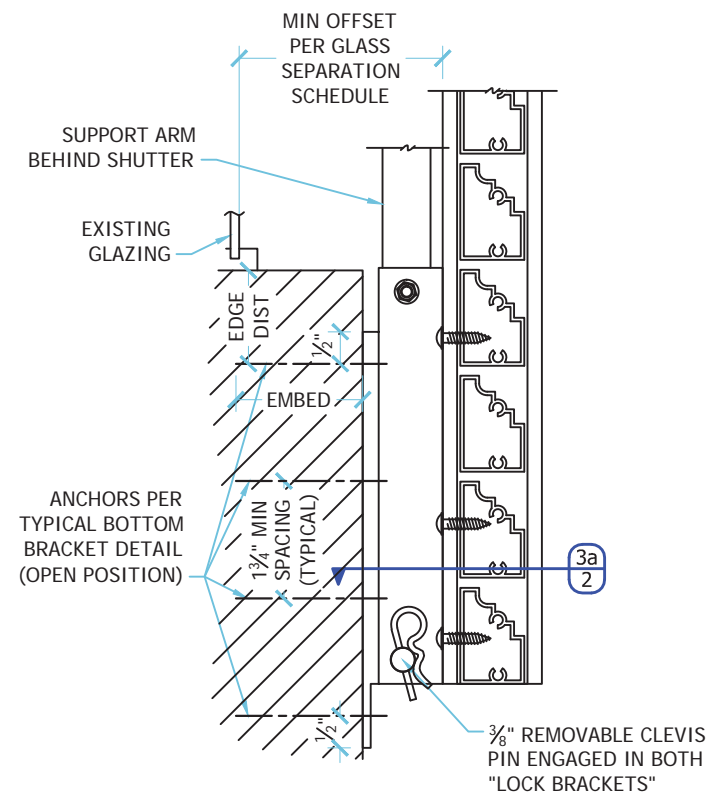
**1** TYPICAL HINGE BRACKET  
 2 SCALE: 4" = 1'-0" VERTICAL SECTION



**1a** SECTION AT HINGE BRACKET  
 2 SCALE: 4" = 1'-0" HORIZ SECT



**2** TYPICAL BOTTOM BRACKET (OPEN POSITION)  
 2 SCALE: 4" = 1'-0" VERTICAL SECTION



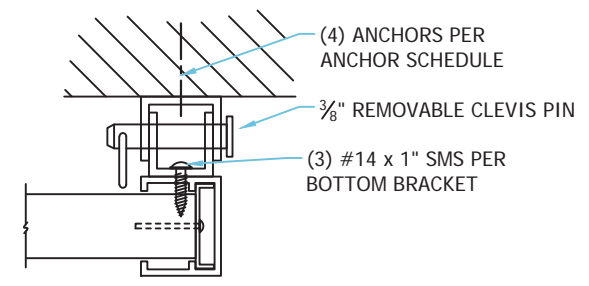
**3** TYPICAL BOTTOM BRACKET (CLOSED POSITION)  
 2 SCALE: 4" = 1'-0" VERTICAL SECTION

**GLASS SEPARATION SCHEDULE**

	POSITIVE PRESSURE	AT OR BELOW 30 FT ABOVE GRADE	MORE THAN 30 FT ABOVE GRADE
6' x 6' SHUTTER	41.6 psf	2.75"	2.25"
	80.0 psf	2.88"	2.88"
10' x 8' SHUTTER	49.4 psf	4.00"	4.00"
	65.0 psf	4.63"	4.63"

**GLASS SEPARATION NOTES:**

1. SCHEDULE GIVES MINIMUM REQUIRED SEPARATION BETWEEN SHUTTER (CLOSED POSITION) AND GLAZING.
2. WHERE SHUTTER SIZE EXCEEDS 6' x 6', USE SEPARATION SHOWN FOR 10' x 8' SHUTTER.
3. NEGATIVE WIND PRESSURES ARE NOT CONSIDERED IN DETERMINING MIN REQUIRED GLASS SEPARATION.



**3a** SECTION AT BOTTOM BRACKET  
 2 SCALE: 4" = 1'-0" HORIZ SECT

C.A. #28511  
**NU-WIND ENGINEERING**  
 PRODUCT DEVELOPMENTAL ENGINEERING  
 BOCA RATON, FLORIDA  
 www.nu-wind.com  
 Ofc: (954) 333-8965  
 Fax: (954) 719-3707  
 1200 N FEDERAL HWY, #200  
 BOCA RATON, FL 33432

Dec 16 2011  
 CHRISTIAN LANGLEY, PE  
 FL PE #67382, CA#28511

DATE	DESCRIPTION	BY
9/29/11	INITIAL SUBMITTAL	CL
-	-	-
-	-	-
-	-	-
-	-	-

BELIZEAN BREEZE  
 BAHAMA SHUTTER  
 - HVHZ -  
 FLORIDA PRODUCT APPROVAL

IMPACT SECURE  
 SHUTTERS, Inc  
 1114 SE 12th CT  
 CAPE CORAL, FL 33990

DRAWING NUMBER:  
**ISS.11001**  
 SHEET  
**2** OF **3**

